



Carnival Glass Auction Saturday November 15th 2014 at 9:30 AM

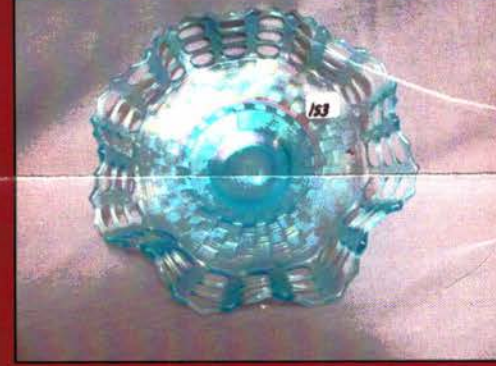
We are please to invite you to our annual Customer Appreciation weekend in Greenville, Ohio. We will be doing this a little different this year. The Fairlawn Steakhouse will be here for you ALL day cooking you Breakfast and Lunch, EVERYTHING FRESH! This is a Fantastic auction for you, so we hope you will join us in our annual celebration of you, our customers, & friends. Glass from Larry Ashoff of FL, Marylene Patry of Montreal, and Philip Kotsios Of MA.

Where to Stay: Greenville Inn> 937. 548.3613 Holiday Inn Express> 937.548.1328

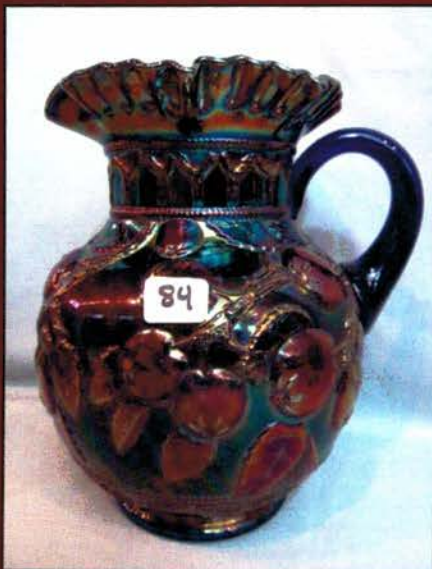
Terms: Cash, Check, Visa MC Discover w 3% clerking fee. Absentee bids can be submitted by Auction Flex; Mail; Email; Phone. We do accept Live Phone bidding for items with a value of \$500.00 or more. All bids are handled competitivly just as if you were here bidding. This auction is available on Proxibid Shipping: there will be \$7.00 per item fee for all successful bids PLUS Shipping and insurance. You are more than welcome to pick your items up or send with someone in the audience as long as we know that BEFORE the auction.

We invite you to come on over and enjoy a day with your Carnival glass "buddies", enjoy some delicious food from the Fairlawn and of course the wonderful collection of glass to be offered.

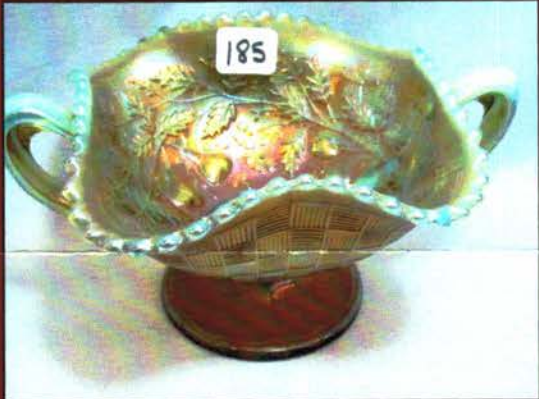
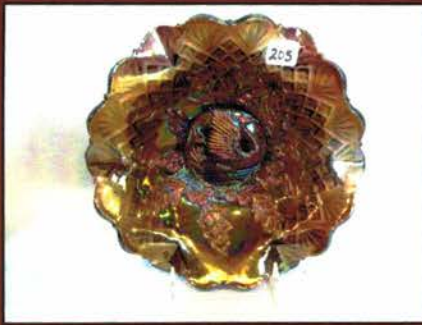
Jim Wroda Auctions - Jim Wroda Auctioneer



Customer Appreciation Auction, Saturday November 15th at 9:45 AM



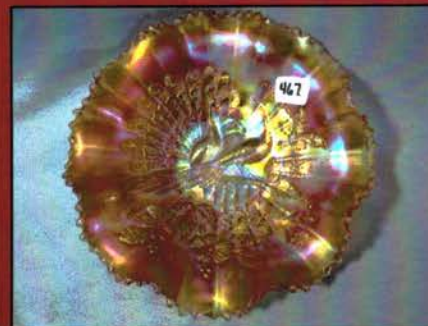
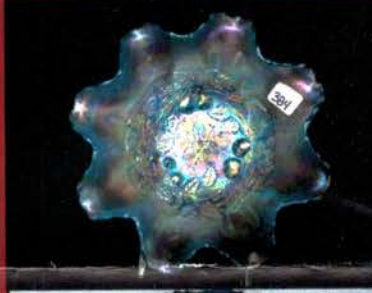
- 1 Nwood 9" elec purple Good Luck bowl HOT!!
- 2 Nwood 9" mari Good Luck bowl w/ BW back. DARK COLOR
- 3 Nwood 8" BLUE Rose SHow bowl. Nice color
- 4 Nwood 9" IB Hearts & Flowers bowl Scarce
- 5 Nwood 9" elec purple G&C plate. Nice one!
- 6 FENTON 9" VASELINE OPAL DRAGON & LOTUS BOWL. VERY SCARCE
- 7 Imp SMOKE Windmill milk pitcher. Tough to find
- 8 Fenton 6" IG OE ICS bowl. Scarce size
- 9 Mburg 8" purple Blackberry Wreath bowl
- 10 Mburg 10" purple Peacocks ruffled bowl
- 11 Mburg 9" rad purple Rays & Ribbons round bowl
- 12 Nwood AO Leaf & Beads rosebowl
- 13 Nwood AO Double Loop Chalice/sugar bowl Scarce
- 14 Brockwitz Kulor 7" blue vase. Scarce
- 15 Fenton 7" blue Vintage plate.
- 16 Dugan 6" PO 4 Flowers plate.
- 17 Fenton 8" VASELINE Dragon & Lotus ICS bowl SUPER!! WOW
- 18 Fenton 9" blue Ribbon Tie 3-1 edge bowl
- 19 Imp 8" amber Open Rose ruffled bowl
- 20 Fenton IB 5" OE ruffled hat. Scarce size
- 21 Unknown 6" blue Stippled Grape deep round bowl w/starflower ext. Don't know a thing about it....Neat though...
- 22 Fenton 9" mari Vintage 3-1 edge bowl
- 23 Dugan purple & mari Coin Spot compotes
- 24 Nwood green G&C hatpin holder Small crack at top. Too bad, this is a nice one!
- 25 3 asst hatpins- see photo
- 26 2 asst hatpins- see photo
- 27 Imp Grape green water pitcher
- 28 Imp Grape purple water pitcher with nice color
- 29 IMP GRAPE VASELINE WATER PITCHER RARE.
- 30 Imp Grape pumpkin mari water pitcher
- 31 Crystal Crucifix Candlestick
- 32 Crystal w/ gold paint Crucifix Candlestick
- 33 Inv Feather Cylinder pitcher w/ gold trim crystal
- 34 Mari Louisa plate w/ brides basket handle
- 35 Dugan white Question Marks plate. Frosty color
- 36 Nwood BLUE Daisy & Plume Rose bowl w/ berry int. Scarce!
- 37 Nwood green Daisy& Plume rose bowl w/ berry int
- 38 Nwood purple G&C water pitcher
- 39 Nwood pastel mari Daisy & Plume candy dish
- 40 2 Fenton Wreath of Roses compotes
- 41 Imp amber Pansy pickle dish
- 42 Fenton mari thistle banana boat
- 43 Nwood mari Singing Bird sugar bowl
- 44 Nwood 8" purple Fruits and Flowers dome ft'd bowl
- 45 Imp elec purple Tiger Lily water pitcher. Scarce
- 46 Imp SMOKE Windmill water pitcher sev. base chips
- 47 Nwood 8" green 3 Fruits medallion ft'd bowl
- 48 Dugan PO Cherries 10 ruffled bowl
- 49 Dugan 9" PO Target vase. Nice color
- 50 Imp mari Twins fruit set
- 51 Western Thistle mari 6" vase. Neat shape
- 52 Nwood mari G&C pin tray from punch cup
- 53 Fenton mari 2 Fruits bon bon
- 54 Nwood 5" purple Strawberry sauce
- 55 Dugan 6" PO Jeweled Heart CRE plate
- 56 Lot of 3 pcs Fenton Persian blue See photo
- 57 Mari Fine Cut Flowers compote- Scarce
- 58 Mari 9" Feathered Arrows ruffled bowl
- 59 Dugan purple Beaded Basket
- 60 2 Dugan 7" PO bowls- Holly & Six Petals
- 61 2 Daisy Dear bowls
- 62 Fenton 5" mari Blackberry Spray hat
- 63 Unknown mari 10" bowl- Fleur-de-lys? Beautiful pattern
- 64 Nwood purple Greek Key tankard.
- 65 Nwood purple Acorn Burr water pitcher. has polished edge
- 66 Nwood purple G&C centerpiece bowl w/points turned in
- 67 Dugan purple Wreath Cherries 6 pc. berry set Scarce
- 68 IB & IG candlesticks- some damage
- 69 2 Smoke 4" Flute ruffled bowls
- 70 Fenton blue Lotus & Grape card tray
- 71 Imp 8" pastel Mari Heavy Grape plate. WOW!
- 72 Imp 9" elec purple Pansy ruffled bowl
- 73 Fenton blue 2 Fruits bonbon
- 74 2 mari 6" OE hats
- 75 Imp 7" green Acanthus deep bowl
- 76 RARE Blue 4 Flowers vari 10" bowl
- 77 Dugan elec purple Cherries ft'd bowl w/ plain int. NICE
- 78 Fenton Hand painted water pitcher
- 79 Imp Flute mari 8" vase
- 80 Fenton mari Persian medallion & Stream Hearts compotes
- 81 Imp elec purple Flute 7pc berry set
- 82 NICE Blue Orange Tree Orchard water pitcher. Great color
- 83 Fenton blue Fluffy Peacock water pitcher. A beauty!
- 84 Fenton blue Apple Tree water pitcher. NICE!
- 85 Nwood green G&C hatpin holder
- 86 NWOOD 9" BLUE STIPPLED STRAWBERRY PCE BOWL SCARCE!
- 87 NWOOD 9" LAVENDER PEACOCKS PCE BOWL. VERY COOL COLOR!
- 88 Nwood 9" green Good Luck PCE bowl w/ BW ext.
- 89 Dugan mari Maple Leaf 5 pc berry set
- 90 Mburg 9" green Whirling Leaves ruffled bowl NICE
- 91 2 Fenton mari Goblet Holly compotes
- 92 2 Fenton Goblet Holly compotes- amber & purple
- 93 2 Fenton cobalt Goblet Holly compotes
- 94 2 Fenton mari Holly compotes w/ CRE
- 95 2 Fenton Holly compotes. Vaseline & mari
- 96 2 Fenton Holly compotes. Lav & pink?
- 97 2 Imp Green Star of David bowls
- 98 Dugan PO Double Stem Rose ICS bowl
- 99 Nwood 9" blue Stippled 3 Fruits plate.
- 100 Mburg 10" mari Rosalind 3-1 edge bowl
- 101 Nwood 9" purple Stippled 3 fruits plate tad silvery
- 102 Imp? 9" purple Flute (wide panel) 3-1 edge bowl
- 103 Nwood 9" green Wishbone PCE bowl
- 104 3 Dugan PO 7" Bells & Beads bowls
- 105 Imp mari Tiger Lily water pitcher
- 106 Fenton mari Apple Tree water pitcher
- 107 Fenton Int Drape HP water pitcher
- 108 Fenton Ice Green Zig Zag Hand Painted water pitcher
- 109 Nwood purple G&C water pitcher
- 110 Fenton blue Butterfly & Berry master berry bowl
- 111 Dugan mari Puzzle bon bon
- 112 2 Fostoria Brocaded Acorn pieces Bowl and plate w/ gold trim
- 113 Nwood 10" purple Tree Trunk vase
- 114 Imp 7" purple Ripple Squatty vase. Nice color
- 115 Dugan 9" green Cherries chop plate w/ JH ext Not CG but really cool!
- 116 Sowerby mari Field Thistle 10" chop plate
- 117 Dugan PO Apple Blossom Twigs ICS bowl
- 118 RARE Dugan 7" Lattice & Heart ruffled plate w/ flared points
- 119 Fenton 8.5" PURPLE Stag & Holly ft'd flat plate
- 120 Fenton 8.5" PURPLE Stag & Holly ft'd flat plate
- 121 Fenton 5" powder blue and purple Panther sauces
- 122 Fenton blue & purple Rustic vases
- 123 Dugan 9"purple Target vase
- 124 May West BLUE candlestick
- 125 Nwood 6" purple Tree Trunk Squatty vase

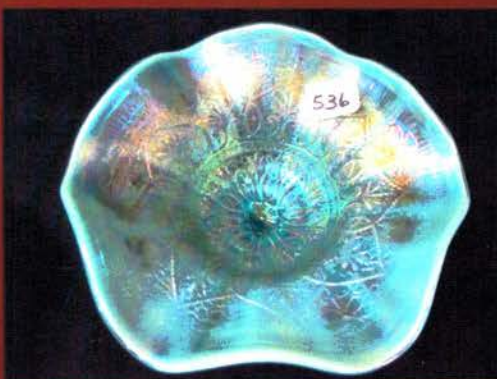
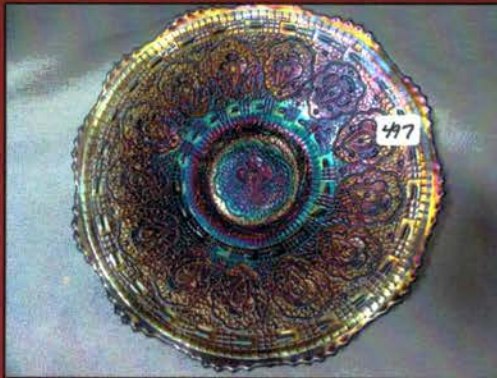
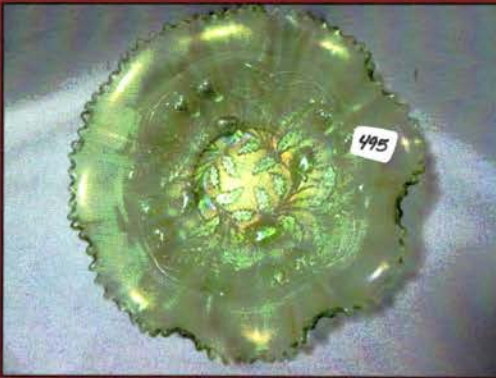
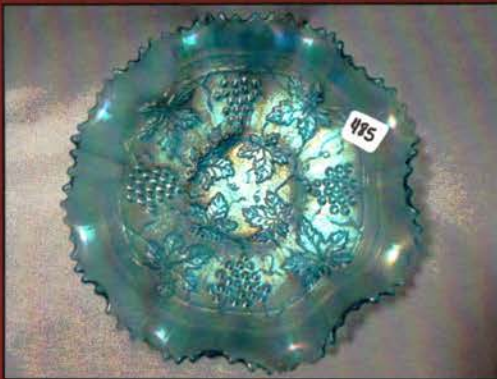


- 126 ODD IMP REDDISH AMBER FASHION PUNCH TOP RARE COLOR. NOT SEEN THIS COLOR BEFORE. INTERIOR IS WONDERFUL
- 127 Nwood 9" crystal G&C plate
- 128 Nwood 9" white Peacocks plate. FROSTY
- 129 Nwood 9" IG PEacocks plate. chip on tooth
- 130 Nwood 9" dark IG Peacocks plate
- 131 Nwood 8" purple Peacocks ruffled bowl
- 132 6 Green Mburg 6" Blackberry Wreath 3-1 edge sauces
- 133 Fenton 6" light amy Lotus & Grape ft'd bowl.
- 134 Fenton BLUE Butterfly & Berry creamer
- 135 Fenton BLUE Butterfly & Berry covered sugar
- 136 Fenton BLUE Butterfly & Berry covered butter
- 137 Imp RED Double Scroll candlestick
- 138 2 Fenton purple Holly ruffled compotes
- 139 2 Fenton blue Low ruffled Holly compotes
- 140 2 Fenton blue Low ruffled Holly compotes one my be violet
- 141 2 Fenton Holly compotes, lav & lime
- 142 2 Fenton Holly compotes, Vas & Green Vaseline not irid.
- 143 Fenton 18" purple Fine Rib midsize vase
- 144 Imp mari Gothic Arches 16" flared vase
- 145 Fenton 17" blue Rustic mid size vase crack in base
- 146 Nwood 17" green Wide Panel vase
- 147 Fenton purple PAneled Dandelion tankard
- 148 Scarce mari Banded Berry wine set w/ tray Nicely done
- 149 3 Dugan purple punch cups
- 150 Fenton mari Orange Tree 6pc punch set
- 151 NWOOD WHITE ORIENTAL POPPY TANKARD. VERY FROSTY!
- 152 SUPER Dugan elec purple Cherries 10 ruffled bowl WOW!
- 153 RARE Fenton 8" Ice Blue OE ruffled bowl 3 row!!!
- 154 Dugan PO Stippled Petal ruffled bowl
- 155 Nwood 9" blue Good Luck stippled PCE bowl
- 156 Fenton GREEN Dragon & Lotus bowl Scarce color
- 157 Nwood 8" emerald green Strawberry PCE bowl Super
- 158 Nwood purple Butterfly bon bon
- 159 Imp purple Diamond Lace water pitcher
- 160 Fenton green Scotch Thistle CRE compote
- 161 Dugan 8" white FAnchful plate
- 162 Nwood 8.5" white Heart & Flower bowl Nice
- 163 3 6" Fenton mari tri-corner bowls Vintage & Feather serp
- 164 2 5" purple Little Flowers sauce bowls
- 165 Fenton 5" red OE JIP Hat
- 166 NWOOD 9" GREEN G&C STIPPLED PLATE OLD ROSE DIST. ADVERTISING
- 167 Imp 11" purple Heavy Grape chop plate
- 168 Celeste blue Rose SPray JIP compote
- 169 RARE pink Sing birds STIPPLED mug Not CG
- 170 Nwood IB 3 Fruits stippled ft'd bowl
- 171 Nwood 9" Good Luck stippled PCE bowl
- 172 Nwood 9.5" green Wild Strawberry bowl
- 173 RARE LAVENDER PERSIAN GARDEN FRUIT BOWL & BASE NOT MANY AROUND. SCARCE
- 174 Dugan mari Persian Garden fruit bowl & base
- 175 Nwood 8" blue Good Luck ruffled bowl
- 176 Nwood 9" mari Good Luck stippled PCE bowl
- 177 Fenton mari Fentonia butter dish
- 178 Rising Sun mari pitcher
- 179 Dugan purple Grape Delight rosebowl
- 180 Nwood purple Town Pump. Scarce Always in demand
- 181 Dugan purple Butterfly & Tulip deep round bowl
- 182 Imp 10" smoke ruffled bowl= cracked
- 183 Mburg 8" mari Trout & Fly ruffled bowl
- 184 Fenton powder blue Lotus & Grape card tray Scarce
- 185 Nwood AO Fruits & Flowers bon bon
- 186 Nwood 9" pastel mari Rose SHow plate Very nice!
- 187 Nwood 9" blue 3 Fruits stippled plate
- 188 WOW MBURG 8" BIG FISH ICS BOWL RADIUM. VERY NICE PRESSING!
- 189 Dugan PO Stippled Petal banana boat shape ft'd bowl
- 190 Nwood AO Heart & Flower compote
- 191 Imp elec purple Zipper Heart 5pc berry set Great color
- 192 Nwood 9" BLUE G&C stippled plate
- 193 VERY RARE RED 11" Plume Panels vase not irid!
- 194 Nwood green Corn vase. Very hard to find
- 195 Fenton white Waterlily bon bon
- 196 Fenton 7" purple G&C bowl
- 197 Fenton blue Orange Tree creamer
- 198 Fenton 6" blue Stippled ray bowl
- 199 Dugan ELEC PURPLE Many Fruits punchbowl & base This is Killer!! However bowl is cracked
- 200 Imp purple Broken Arches punch set
- 201 Fenton Interior Drape Hand painted pitcher
- 202 Dugan 8" rad mari Double Stem Rose 3-1 edge bowl
- 203 Dugan purple Wreathed Cherry banana boat
- 204 Nwood green Wide Panel 5pc berry set This is the blank for Singing Birds
- 205 Mburg 9" rad purple Nesting Swans bowl Very nice
- 206 Fenton blue Captive Rose compote
- 207 Fenton mari G&C fruit bowl w/ PM int
- 208 Nwood green G&C master berry bowl
- 209 Imp elec purple Diamond & Sunburst decanter- no stopper
- 210 RARE Nwood mari Bushel basket... with SMOOTH handles. Scarce
- 211 European blue 5.5" vase
- 212 Dugan 9" mari garden Path vari deep bowl
- 213 RARE Dugan 8" purple Wind Flower ICS bowl Not many of these puppies around!
- 214 Fenton 7" blue Feather Stitch deep bowl
- 215 Nwood purple G&C hatpin holder
- 216 Fenton 9" blue Blackberry ruffled bowl base chipped
- 217 Fenton bright mari Orange Tree butter dish
- 218 3 mari Peacock at Fountain berry bowls
- 219 Fenton G&C mari fruit bowl w/ PM int
- 220 2 Nwood 5" green G&C berry bowls
- 221 Nwood 10" russet green 4 Pillars vase
- 222 2 11" russet green Thin Rib vases
- 223 West 8" purple Corinth vase
- 224 Purple Wide Panel 8" vase
- 225 Imp 8" mari Smooth panels vase
- 226 Imp 12" amber Ripple vase
- 227 Imp 9" mari Ripple vase
- 228 Fenton 9" purple Diamond Rib vase
- 229 Imp 9" purple Ripple vase. Very nice color
- 230 Fenton 12" purple Wide Panel vase
- 231 European 7" ft'd vase.. COOL SHAPE!
- 232 Fenton 9" vaseline Flute vase Not CG. This is NEAT!
- 233 Fenton 18" mari Rib vase
- 234 Nwood purple GReek Key tumbler
- 235 Imp mari JIP Morning Glory vase
- 236 Nwood purple 9" Diamond Points vase
- 237 Nwood purple Beaded Cable rosebowl
- 238 Nwood mari Leaf & Beads rosebowl
- 239 Fenton blue Wreath of Roses compotes
- 240 Fenton mari Persian Medallion compote
- 241 Fenton mari Waterlily 5pc water set
- 242 SUPER BEAUTIFUL TRUE EMERALD GREEN GOOD LUCK RUFFLED BOWL. HOLY WOWSER!!!
- 243 Nwood purple G&C water pitcher-NOT IRID! Never seen this
- 244 2 Imp 11" Ripple Vases- Green & Mari
- 245 Imp 10" Amber Homestead chop plate Side chip on collar base
- 246 Dugan mari Stork & Rushes punch bowl and base
- 247 2 mari Dugan Windflower plates and ICS bowl
- 248 Nwood Daisy & Plume rosebowls- Blue MARI Green All have small amount flaking on feet
- 249 3 mari 5" Scroll Embossed bowls
- 250 Floral & Optic ft'd bowls in mari & Smoke
- 251 Imp green 6" Morning Glory vase. Scarce size
- 252 3 MARI File lamp shades
- 253 Nwood mari Peacock at Fountain punch bowl and base. Missing a flute. but pretty
- 254 4 green G&C stippled punch cups
- 255 4 mari Peacock at Fountain punch cups
- 256 Nwood mari Raspberry candy dish
- 257 Imp 5" mari Thin Rib & drape vase



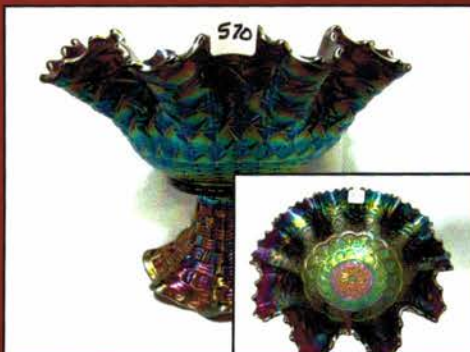
- 258 2 green imp Heavy Grape bowls
- 259 MAri Vintage Grape water pitcher
- 260 Imp mari Windmill water pitcher
- 261 Fenton 5" purple Stippled Rays round bowl
- 262 Fenton 7" G&C bowl
- 263 Imp elec purple Grape tumbler- HOT
- 264 2 Dugan mari low ruffled Lattice & Points bowls Scarce
- 265 2 mari European tumblers
- 266 Purple & Mari Coin spot compotes
- 267 Opalescent Jeweled Heart 3 pc berry set
- 268 2 purple Fisherman's mugs
- 269 Dugan 7" purple plate
- 270 Fenton 7" G&C bowl.. Either real dark red or Black amy
- 271 Blue hen on nest- Sowerby
- 272 Imp Grape 7" plates in mari & Green
- 273 Blue Fenton Peacock at Urn and Holly compotes
- 274 Imp mari Flower Scroll vase.. Looks old
- 275 2 PO Dugan ribbed vases
- 276 crystal Zipper Loop lamp
- 277 Imp mari Waffle Block punch set.
- 278 Fenton violet blue Blackberry Spray JIP hat
- 279 Fenton amber? Holly ruffled hat
- 280 Imp mari Fashion punch set
- 281 IMP BLUE BLUE BLUE PANSY NAPPY RARE AND REALLY PRETTY
- 282 Imp mari Fashion water pitcher
- 283 3 mari Peacock at Fountain berry bowls
- 284 MAri Laurel band water pitcher
- 285 Nwood 12" green carnival glass vase
- 286 Imp mari Scroll Embossed compote carnival glass
- 287 European water pitcher with tumbler
- 288 4 ruby flashed carnival glass wines
- 289 Dugan PO Starfish compote
- 290 Nwood 4" jelly compote wide panel
- 291 Imp mari & White Free fold vases
- 292 mari paneled water pitcher
- 292a Nwood Elec green G&C hatpin Holder. Super pretty but does have a 2" INTERNAL stress at top. Some would call this emerald
- 293 Imp mari 8pc Broken Arches ruffled punch set
- 294 Imp mari 474 8 pc punch set
- 295 Scarce Dugan mari Vintage Banded water pitcher
- 296 Nwood blue G&C ruffled bowl- Nice color!
- 297 Imp mari Wide Panel chop plate 15"!
- 298 Dugan 10" white Lined Lattice vase
- 299 Fenton purple Milady tumbler= RARE
- 300a Nwood green Springtime water pitcher Super nice pitcher
- 300b NWOOD ELEC BLUE Peacock at Fountain fruit bowl. WOWW!! SUPER!!
- 300c Fenton unicolorized Holly vaseline compote
- 300d SUPER NWOOD 17" TREE TRUNK PURPLE FUNERAL VASE VERY VERY NICE!
- 301 Nwood 9" elec purple Nippon PCE bowl
- 302 Dugan mari violet basket holder in metal frame
- 303 Imp 5" stretch vase- white / Iron Cross mark
- 304 Nwood elec purple G&C dresser tray
- 305 Nwood Wild Strawberry 7" Hand Grip plate with wonderful color
- 306 Dugan mari Many Fruits punch bowl and base Nice color
- 307 Mari enameled perfume bottle
- 308 Nwood GREEN Blackberry rays compote Scarce color
- 309 Fenton blue 11" Stag & Holly ft'd ICS bowl Scarce
- 310 Imp. 8" SMOKE Hattie deep round bowl BRIGHT IRID!!
- 311 Nwood 9" purple Good Luck plate. Very nice color
- 312 Nwood 9" mari Good Luck PCE bowl More to the pastel side. Very pretty
- 313 Fenton 9" HOT MARI Little Fishes ft'd ICS bowl Great detail
- 314 Fenton blue Floral & Grape water pitcher
- 315 Nwood elec purple G&C banana boat. SUPER COLOR! WOW
- 316 Nwood mari Springtime 7pc water set. Scarce
- 317 Nwood bright mari G&C dresser tray. Looker
- 318 Mari flash etched 7pc water set attrib Imperial
- 319 Nwood 5pc WHITE Grape Arbor tankard set Nice and Frosty!
- 320 Nwood 9" elec blue Peacocks PCE bowl NICE!
- 321 Nwood 9" mari Peacocks plate.
- 322 Nwood IB Fine Cut & Roses rosebowl
- 323 Nwood elec green G&C banana boat WOW WEE!!
- 324 Nwood 10" IG Thin Rib vase. Nice color!
- 325 Nwood 8.5" mario 3 Fruits stippled bowl w/ spatula feet
- 326 Nwood IG round bushel Basket
- 327 Set of 5 GREEN Nwood G&C 5" berry bowls-
- 328 Nwood mari Singing Birds mug
- 329 Nwood custard nutmeg G&C stippled banded oval dresser tray
- 330 NWOOD 10" CUSTARD NUTMEG PEACOCK AT URN BANANA BOAT SHAPE OR 2 SIDES UP CHOP PLATE- WHATEVER YOU WANT IT TO BE! RARE!
- 331 Nwood 8" mari Drapery vase
- 332 Fenton amber Orange Tree mug
- 333 Fenton Vaseline Orange Tree mug
- 334 Fenton mari Bouquet tumbler
- 335 Fenton 8" green Captive Rose ICS bowl Great detail and color for this bowl
- 336 Fenton 9" blue Captive Rose plate
- 337 Fenton 9" GREEN Holly plate. Very nice color
- 338 RARE Fenton mari 2 Flowers rose bowl
- 339 Fenton 9" RED Fine Rib vase. Good lookin vase
- 340 Fenton 6" purple OE Blackspray hat
- 341 Fenton 5.5' GREEN Waterlily ft'd sauce
- 342 Fenton 9" mari Plaid ruffled bowl
- 343 Fenton 9" blue Plaid ruffled bowl
- 344 Fenton 9" mari Peacock at Urn 8 ruffled bowl
- 345 RARE FENTON 7" MARI ON MOONSTONE G&C ICS BOWL VERY RARE... USUALLY FOUND RUFFLED IF YOU CAN FIND ONE
- 346 Fenton mari Waterlily Butterdish
- 347 Fenton mari Waterlily spooner
- 348 Fostoria PINK Brocaded Palms 10" 2 handle bowl w/ gold trim.
- 349 Dugan mari Vintage powder jar
- 350 Dugan white Grape Delight rosebowl
- 351 Dugan cobalt blue 6" frit vase- corset shape
- 352 Dugan 7" yellow frit vase
- 353 Dugan 8" purple frit ruffled vase
- 354 2 Dugan frit vases with donut shape top. Yellow and teal. Both very hard to find
- 355 2 Dugan Estate frit vases, pinched and ruffled, Teal & Amy.
- 356 Lacy Dew Drop mari on milk glass covered compote NICE!
- 357 Very scarce Fashion smoke cream and sugar
- 358 STUNNING IMP ELEC PURPLE FLARED FUNERAL VASE W/ A TWIST AT THE TOP. MOST OFF THESE R TALLER.. NICE SHAPE
- 359 Imp 12" mari Beaded Bullseye vase
- 360 Fenton Poppy Show vase- celeste
- 361 Fenton RED Stretch punch top. Scarce
- 362 Dugan?? RED Stretch flip vase
- 363 Fenton? RED STRETCH low float bowl.
- 364 RED Chesterfield compote
- 365 Ice Blue Cornucopia bowl
- 366 Nwood mari Memphis punch base
- 367 Nwood 10" mari Memphis master berry bowl
- 368 Fenton 9" white Cherry Chain ruffled bowl Frosty
- 369 Nwood 9" crystal Strawberry PCE bowl
- 370 Nwood crystal Memphis round fruit bowl and base. Small chip on base
- 371 RARE Memphis crystal tulip top punch set Wouldn't this be cool in emerald green! Still very rare 8 pc punch set
- 372 RARE NWOOD WHITE ACORN BURR 8PC PUNCH SET. HAS KILLER PASTEL IRID.. WHAT A SET!
- 373 Imp elec purple Colonial Lady Square top vase.





- 374 Nwood 9" blue G&C Stippled plate. Great pressing and color
375 Mburg 8" purple Trout & Fly ICS bowl Scarce shape
376 Mburg 10" purple Peacock at Urn MIC bowl Bee no beads.
377 Nwood ELEC BLUE Wishbone ft'd bowl SUPER! HOT LOT!
378 Nwood 8" elec purple 3 fruits stippled Spatula ft'd bowl. Great color
379 Nwood 8.5" elec blue 3 Fruits Stippled spatula ft'd bowl. Another pretty bowl
380 Nwood 8" AO 3 Fruits Stippled spatula ft'd bowl. Nice dark Butterscotch irid
381 Nwood 8" white 3 Fruits Stippled spatula ft'd bowl.
382 Nwood 8" pastel AO 3 Fruits Stippled spatula ft'd bowl. NICE
383 Nwood 8" ice green 3 Fruits Stippled spatula ft'd bowl. Very tough bowl to find
384 Nwood 8" ice blue 3 Fruits Stippled spatula ft'd bowl. Another very tough bowl to find and LOADED with color
385 Imp 16.5" GREEN Morning Glory funeral vase! Very Scarce and nice
386 Imp 16.5" elec purple Morning Glory funeral vase! Very Scarce and SUPER COLOR!
387 Imp 20" mari Morning Glory funeral vase Cool turn in top
388 Fenton 5.5" Waterlily reverse amberina ft'd sauce
389 Fenton 5.5" Waterlily purple (almost wisteria) ft
390 Fenton 10" mari Waterlily ft'd bowl Very dark color- better than avg
391 Imp 11" elec purple Grape ruffled bowl STUNNING!
392 Fenton 10" dark mari Waterlily ICS ft'd bowl NICE
393 Fenton GREEN Lotus & Grape bon bon, Quite rare color
394 Fenton blue Vintage bon bon.
395 NWOOD 9" GREEN PEACOCKS PLATE W/ VERY RARE PLAIN BACK. PRETTY
396 Nwood 9" ELEC BLUE Peacocks plate WOW!
397 Nwood 9" mari Peacocks plate. Nice for this plate
398 Nwood 9" white Peacocks plate. NICE!!
399 Nwood 9" IG Peacocks plate. Always a popular plate
400 Dugan Mari Golden Grape 7" bowl
401 West 9" purple Corinth JIP vase
402 Dugan 10" elec purple Target vase
403 Nwood 11" green Plume Panels vase
404 Nwood 12" blue Plume Panels vase
405 Imp 10" Ripple vase, mari
406 Imp 11" GREEN Ripple vase
407 Imp 12" mari Free fold vase. radium
408 Imp 11" SMOKE Free Fold vase. HOT!
409 Fenton 11.5" mari April Showers vase
410 Fenton 11" purple April Showers vase
411 Nwood 8.5" elec purple Peacocks ruffled bowl SWEET!
412 NWOOD 9" ELEC PURPLE ROSE SHOW PLATE SCARCE
413 Nwood Killer elec blue Rose Show bowl WOW!
414 Nwood marigold Rose Show carnival glass bowl
415 Nwood 8" purple Wishbone ft's bowl Nice
416 Fenton 9" elec blue Dragon & Lotus ICS bowl As good as you will ever find. Nice piece of carnival glass
417 Fenton 9" mari Dragon & Lotus ICS bowl
418 Nwood dark mari Good Luck ruffled bowl.
419 Nwood 9" purple Good Luck PCE bowl Nice lite lav look
420 Nwood 9" IB Nippon PCE bowl. Scarce
421 Nwood 9" purple Nippon PCE bowl Scarce
422 Fenton 8" GREEN Peacock Tails 3-1 edge bowl
423 Nwood 9" purple 3 fruits stippled plate
424 Nwood 9" mari 3 fruits stippled plate Scarce
425 Imp mari candle sticks
426 SUPER COOL Dugan 5" Elec purple Pulled Loops squatty vase.
427 Mburg 8" rad green Trout & Fly ICS bowl Scarce
428 Fenton 9" blue Peacock at Urn 8 ruffled bowl NICE
429 Fenton 7 green Stippled Rays bowl
430 Fenton mari 8" Ragged Robin 3-1 edge bowl
431 Fenton 8" purple Ragged Robin 3-1 edge bowl Scarce
432 Nwood mari Peacock at Fountain master berry bowl NICE
433 Nwood 8.5" IB Hearts & Flowers ruffled bowl Dark color
434 Nwood 8.5" mari 3 Fruits stippled spatula ft'd bowl. Nice one!
435 Imp mari 12.5" Morning Glory Squatty funeral vase I guess a mid size? RARE!
436 Imp 11" mari Beaded Bullseye vase
437 NWOOD WHITE WIDE PANEL EPERGNE RARE!!! SMALL CHIP ON SHANK OF CENTER LILY.. WHO CARES!
438 Nwood 8.5" IB Wishbone ft'd bowl What a sweetie!
439 Nwood 8.5" White Wishbone ft'd bowl Another great pastel!
440 Nwood 8" pumpkin mari Wishbone ft'd bowl As dark as you will find!
441 NWOOD 8.5" LIME GREEN WISHBONE FT'D BOWL VERY RARE AND SUPER NICE
442 Nwood 8.5" green Wishbone ft'd bowl Scarce
443 Nwood 8" emerald green Wishbone ft'd bowl WOW!!
444 Fenton 9" purple Vintage 3-1 edge bowl
445 Fenton 8.5" green Vintage 3-1 edge bowl
446 FENTON 9" CELESTE OR SAPPHIRE BLUE VINTAGE 3-1 EDGE BOWL W MARIGOLD OVERLAY. THIS IS ONE COOL BOWL!
447 Fenton 8"blue Vintage 3-1 edge bowl
448 Fenton 9" blue Vintage 3-1 edge bowl What a great set of 3-1 edge bowls
449 Mburg 10" rad green Peacock 3-1 edge bowl. RARE No Bee or Beads
450 Mburg 9" emerald green Holly Sprig vari 3-1 edge bowl
451 Mburg 8" rad purple Strawberry Wreath vari 3-1 edge bowl. Beauty!
452 Fenton 7" purple Vintage ruffled bowl
453 Fenton 7" mari Vintage ruffled bowl
454 Fenton 6" green Peacock Tail tri-corner bowl
455 Fenton 5" mari Peacock tail ruffled bowl
456 Fenton 9" blue Thistle ruffled bowl.
457 Fenton 8" blue Holly CRE bowl. Cool!
458 Imp 6" lite smoke Morning glory vase RARE SIZE for smoke
459 Imp 5 white Stretch Jewels vase
460 Fenton 8" mari Thistle ICS bowl
461 Fenton 8.5" Thistle ruffled bowl
462 Fenton 8" purple Blackberry bramble 3-1 edge bowl
463 Dugan 7" white Pool of Pearls plate
464 Fenton 7" mari Vintage plate
465 Nwood 8.5" white 3 Fruits stipple spatula ft'd bowl. Very tough bowl
466 Nwood purple G&C bon bon, scarce
467 RAINBOW OF COLORS!! Mari Peacocks ruffled bowl. WOW!
468 Nwood 10" purple Peacock at Urn chop plate Hardly ever for sale anymore... NICE!
469 Mburg 10" mari Hanging Cherries ICS bowl Scarce
470 Imp 9" white/clambroth Ripple vase
471 Imp 14" SMOKE Parlor Panels vase Tough color and nice!
472 Fenton 15" blue Rustic vase
473 Imp 10" elec purple Parlor Panels vase Scarce
474 Imp 8" smoke Curled Rib JIP vase.
475 Imp 9" mari Morning glory vase
476 Dugan 8" mari Target vase
477 Dugan 12" blue Pulled Loops vase
478 Nwood 12" Black Amy Leaf Columns vase
479 Dugan 11" blue Spirolex vase
480 Imp 14" elec purple Beaded Bullseye vase WOW!

- 481 Fenton 13" mari Plume Panels vase
482 Imp 11" mari Beaded Bullseye vase
483 Nwood 9" elec purple Peacocks Plate
484 Nwood 8.5" elec purple G&C ruffled bowl
485 NWOOD 8.5" SAPPHIRE G&C RUFFLED BOWL RARE AND LOOKS SAPPHIRE!
486 Brilliant pastel mari Greek Key ruffled bowl
487 Nwood 9" green Greek Key ruffled bowl
488 Nwood 8.5" purple Greek key ruffled bowl Scarce
489 Nwood 10" GREEN Wishbone PCE flared bowl This is cool!
490 Fenton 10" green Feathered Serpent ruffled bowl
491 Fenton 10" purple Feathered Serpent ruffled bowl
492 Mburg 10" green Fleur de lis ruffled bowl w/ collar base
493 Mburg 8" mari Blackberry Wreath bowl
494 West 8" PO Carolina DOgwood bowl
495 NWOOD 8.5" LIME GREEN STIPPLE STRAWBERRY RUFFLED BOWL. RARE!
496 Nwood 8" IG 3 Fruits stippled spatula ft'd bowl Scarce
497 Fenton 9" blue Persian Medallion plate As close to elec for this that I have seen.. SUPER PLATE!!
498 Mburg 7" green Blackberry Wreath bowl
499 Mburg 10" rad purple Peacock ruffled bowl Great color!
500 Mburg 10" Nesting Swan ruffled bowl rad purple
501 Nwood green Holly Bon bon
502 Imp 9" mari Parlor Panels vase
503 Nwood Green 9" Leaf Columns vase
504 Imp 6" elec smoke Parlor Panels squatty vase
505 Fenton 10" blue April Showers vase
506 Imp 4" clambroth Parlor Panels squatty vase. RARE
507 Dugan 6.5" frosty white Target vase. Scarce
508 Imp 9" mari Smooth Panels vase
509 Imp dark smoke 18" Morning Glory funeral vase. Almost looks like charcoal base color.. odd
510 Fenton celeste blue colonial candle sticks
511 Mburg 10" mari Hanging CHERIES 3-1 edge bowl
512 Nwood mari Peacock at Fountain complete table set well matched set!
513 West lite amy Leaf Swirl flared compote
514 West purple Leaf Swirl compote
515 Fenton GREEN Vintage stemmed compote what a great set of compotes
516 Fenton GREEN Vintage stemmed compote what a great set of compotes
517 Fenton MARI Vintage stemmed compote what a great set of compotes
518 Fenton PURPLE Vintage stemmed compote what a great set of compotes
519 Fenton LITE AMY Vintage stemmed compote what a great set of compotes
520 Fenton BLUE Vintage stemmed compote what a great set of compotes
521 Nwood MARI Peacock at Fountain compote
522 Nwood WHITE Peacock at Fountain compote FROSTY
523 Nwood ICE GREEN Peacock at Fountain compote FROSTY
524 Nwood ELEC BLUE Peacock at Fountain compote STUNNING!!
525 Fenton blue Peacock at Urn ruffled compote
526 Fenton mari Peacock at Urn ruffled compote
527 Nwood Black Amy Heart & Flowers compote
HERE'S A GREAT RUN OF COMPOTES ALSO! ALL HAVE GREAT COLOR!
528 Nwood DARK MARI Heart & Flowers compote Here's a great run of compotes also! ALL have great color!
529 Nwood PASTEL MARI Heart & Flowers compote Here's a great run of compotes also! ALL have great color!
- 530 Nwood ELEC BLUE Heart & Flowers compote Here's a great run of compotes also! ALL have great color!
531 Nwood GREEN Heart & Flowers compote RARE COLOR!
532 Nwood AO Heart & Flowers compote GREAT COLOR!
533 Nwood PASTEL AO Heart & Flowers compote GREAT COLOR!
534 Nwood BLUE OPAL Heart & Flowers compote. Not CG
535 Nwood WHITE Heart & Flowers compote FROSTY
536 Nwood Powder blue opal Heart & Flowers compote Great satin irid. RARE!
537 Fenton RED Holly small compote. Looks RED!!
538 Fenton lav Holly small compote. Scarce color
539 Fenton cobalt blue Holly small compote
540 mari creamer/ stemmed sugar/ relish/ compote
541 RARE Nwood LIME GREEN Peacocks STIPPLED PCE bowl. Has just a bit of roughness but do you have one? Pretty!
542 Nwood 9" DARK MARI Strawberry plate w/ BW ext. Nice pumpkin color!
543 Fenton mari Vintage Ferner.. SUPER color for this
543a Fenton blue Panther 5" berry bowl
543b Nwood AO Drapery Rosebowl. Nice
543c Fenton Orange Tree Fruit bowl. Nice color
543d Nwood blue G&C banded stippled fruit bowl.. Does have a crack
543e White Cornucopia candle holder & Red Cornucopia vase
544 purple stemmed compote- Rays
545 2 mari Wishbone tumblers
546 elec purple Oriental Poppy tumbler
547 green Singing Birds tumbler
548 mari G&C tumbler
549 Bouquet mari tumbler
550 Bouquet blue tumbler
551 West mari Orange Peel 8 pc punch set Scarce
552 Fenton mari Orange Tree 8 pc punch set w/ruffled top
553 Imp Grape mari 8pc punch set.. Actually quite nice
554 RARE Imp Heavy Grape punch bowl and 2 cups Hard to find in any color
555 Imp mari 474 8pc punch set. another pretty set
556 Nwood purple Memphis 8 pc fruit set. Neat, that this actually looks like a miniature punch set.. Not flared like normal
557 Nwood mari Memphis flared fruit set
558 NWOOD BLASTING ELEC BLUE G&C STIPPLED PUNCH SET W/ 2 CUPS. WOW!!!!
559 Nwood mari G&C MIDSIZE 8pc punch set. very satin irid
560 Fenton WHITE Orange Tree 8pc punch set Scarce
561 Fenton blue Orange Tree 8 pc punch set w/flared top
562 Dugan mari Stork & Rushes 8pc punch set Scarce
563 Dugan mari Many Fruits 8pc punch set w/ round top. SUPER!
564 nwood WHITE Memphis 8pc fruit set. VERY FROSTY IRID!
565 RARE NWOOD EMERALD GREEN MEMPHIS 8 PC PUNCH SET WOW!! HOW MANY OF THESE R OUT THERE? CUPS ARE NOT EMERALD BUT WHO REALLY CARES... BUY IT!
566 Nwood dark mari Memphis 8pc punch set' Beautiful!
567 Nwood elec purple Memphis 8pc punch set Another beauty!
568 Dugan white 2 pc Persian Garden fruit set. Frosty
569 DUGAN PEACH OPAL PERSIAN GARDEN 2 PC FRUIT SET RARE!
570 DUGAN ELEC PURPLE 2 PC PERSIAN GARDEN FRUIT SET HOT!!
571 Nwood mari Acorn Burr 8pc punch set. Very dark set
572 Imp Grape GREEN 4 pc punch set, scarce
573 IMP GRAPE ELEC PURPLE 8PC PUNCH SET ALL MATCHING AND HOT IRID!

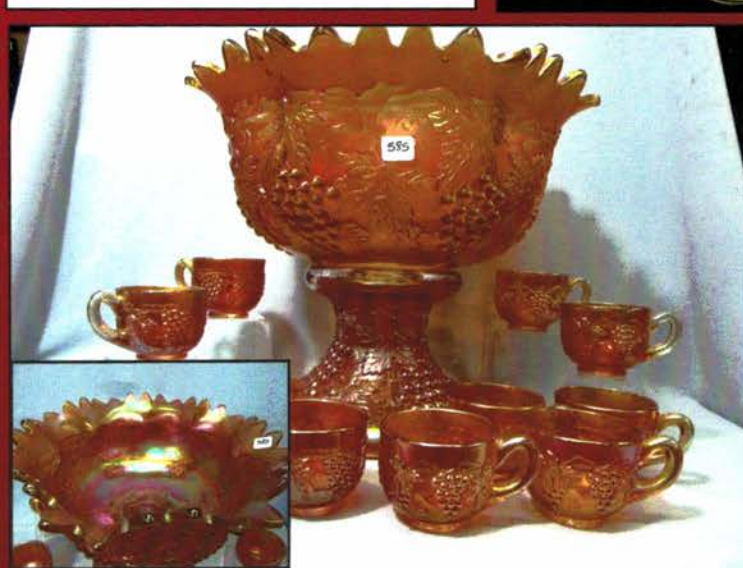
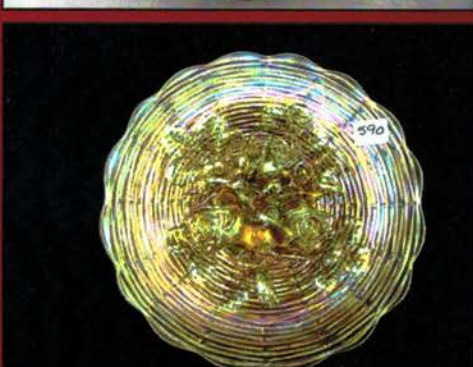


- 574 Imp mari Broken Arches 8pc punch set.
- 575 Fenton mari Wreath of Roses punch bowl and base
- 576 Fenton purple Wreath of Roses punch bowl and base
- 577 Fenton GREEN Wreath of Roses 8pc punch set cup have vintage int. bowl has Persian med.
- 578 Nwood mari Peacock at Fountain punch bowl and base. DARK
- 579 WOW WOW NWOOD ELEC GREEN G&C 8 PC PUNCH SET AS GOOD AS I HAVE SEEN A GREEN ONE!
- 580 Nwood purple G&C 8pc punch set. Pretty
- 581 Nwood purple G&C punch bowl and base another nice one!
- 582 RARE Nwood mari G&C punch set with the "TUCKED" in top. like a ruffled rosebowl
- 583 SUPER RARE NWOOD IB G&C PUNCH BOWL AND BASE. JUST A COUPLE KNOWN. THIS ONE DOES HAVE A RESTORATION TO A POINT BUT... WILL YOU EVER HAVE A CHANCE TO GET ANOTHER ONE? MARYLENE PAID BIG FOR THIS CAUSE SHE KNEW ANOTHER ONE WASN'T GONNA COME ALONG... GOOD LUCK!
- 584 Nwood elec purple G&C MIDSIZE 8pc punch set RARE AND NICE!
- 585 Nwood pumpkin mari G&C MASTER punch set Always in demand! Heres a good one
- 586 Nwood BEAUTIFUL ELEC PURPLE G&C MASTER punch set OH YEAH!!!
- 587 DUGAN KILLER ELEC PURPLE MANY FRUITS 8PC PUNCH SET. W ROUND TOP. STUNNINGGGGGGGG
- 588 6 mari Memphis punch cups
- 589 NWOOD 9" LIME GREEN ROSE SHOW PLATE RARE AND VERY PRETTY!
- 590 Nwood 9" dark mari Rose Show plate A keeper!
- 591 Nwood 9" elec purple Rose Show plate WOW!
- 592 Nwood 9" elec blue Rose Show plate. BRIGHT
- 593 Nwood 9" white Rose Show plate.
- 594 Mburg 8.5" mari Trout & Fly 3-1 edge bowl' Scarce
- 595 Mburg 8.5" purple Trout & Fly 3-1 edge bowl' Scarce edge
- 596 Nwood IG Corn vase w/ stalk base
- 597 Fenton blue Orange Tree hatpin holder
- 598 Nwood mari G&C hatpin holder- DARK
- 599 Nwood elec purple G&C Sweetmeat
- 600 NWOOD IB SINGING BIRDS MUG. RARE
- 601 Nwood GREEN Singing Birds mug. Great color
- 602 Nwood ELEC SATIN BLUE Singing Birds mug.
- 603 Nwood AMY Singing Birds mug.
- 604 Nwood LAV Singing Birds mug.
- 605 Nwood ELEC PURPLE Singing Birds mug.
- 606 Nwood BLACK AMY Singing Birds mug.
- 607 Nwood MARI Singing Birds mug.
- 608 Nwood MARI Singing Birds STIPPLED mug. SUPER!
- 609 Fenton blue Orange tree loving cup
- 610 IG Grape salt Pepper
- 611 Nwood 10" mari Peacock at Urn large ruffled bowl
- 612 Nwood 9" SAPPHIRE Good Luck ruffled bowl TINY Spot on one point
- 613 Nwood 9" BRIGHT PASTEL MARI Good Luck ruffled bowl. One of the most AWESOME mari bowls out there
- 614 Nwood 8.5" purple Good Luck ruffled bowl
- 615 Nwood 8.5" mari Good Luck stippled ruffled bowl
- 616 Nwood 9" 3 Fruits mari plate
- 617 batch carnival jewelry
- 618 Nwood SUPER ELEC PURPLE G&C water pitcher. WOWER!!
- 619 6 G&C tumblers choice elec purple to purple
- 620 Fenton mari Butterfly & Berry 7pc water set
- 621 Fenton BLUE Butterfly & Berry water set Scarce
- 622 Imp mari 474 7pc water set
- 623 Nwood mari 7pc water set. BRIGHT IRID
- 624 Nwood Oriental Poppy purple Tankard. Scarce
- 625 Nwood Oriental Poppy mari Tankard. Kind of a burnt orange irid.
- 626 5 Oriental poppy purple tumblers
- 627 5 Oriental Poppy mari tumblers
- 628 Fenton purple Butterfly & Fern water pitcher. Scarce!!
- 629 Fenton mari Blueberry 7pc water set. Scarce with real nice color!
- 630 8 carnival Wheaton Bottles, Selling choice
- 631 2 Mari Open Rose tumblers
- 632 Nwood purple G&C Whiskey decanter w/ 4 shot glass Scarce.
- 633 IMP ELEC PURPLE HOMESTEAD CHOP PLATE. REAL BRIGHT IRID!
- 634 Nwood pumpkin mari G&C humidor Scarce!!! SUPER COLOR
- 635 NWOOD WHITE G&C CRACKER JAR. REAL TOUGH TO FIND!
- 636 Nwood bright mari G&C Cracker jar.
- 637 Nwood purple large covered compote, scarce
- 638 Nwood green Wide Panel epergne. Scarce Base has so flaking where lily sets in, otherwise OK!
- 639 Nwood GREEN Fluffy Peacock pitcher Scarce and pretty
- 640 Fenton 18" mari Rustic funeral vase.. Chip on base
- 641 Fenton 19" BLUE Rustic funeral vase very nice!
- 642 Fenton 19" purple Rustic funeral vase Scarce color!
- 643 Imp 17" elec purple Morning Glory Funeral vase WOW!
- 644 Imp 19" mari Morning Glory Funeral vase WOW, this has a really cool top!
- 645 2 French Opal Coin Dot water pitchers selling choice

Thanks for participating in todays auction and all of our auctions through-out 2014. We look forward to 2015 with several very nice collections. If you are interested in having your collection sold at a convention, hotel or at our auction center in 2015, just let us know and we will help you with your auction.

Please watch our website for our current & upcoming auctions at www.jimwrodauction.com

Happy Holidays to you and your family,
Jim



Jim Wroda Auctions
2118 Magnolia Ave Ashville, NY 14710
716.526.4230
www.jimwrodaauction.com

PRESORTED
FIRST CLASS MAIL
U.S. POSTAGE
PAID
CELINA, OH
PERMIT NO. 99



FIRST CLASS POSTAGE PAID

14-16*****AUTO**MIXED AADC 430
LEE MARKLEY
PO BOX 306
502 N BROADWAY ST
MENTONE IN 46539-9531



Customer Appreciation Carnival Glass Auction
Saturday November 15th 2014 at 9:30 AM
Greenville Auction Center - Greenville, Ohio