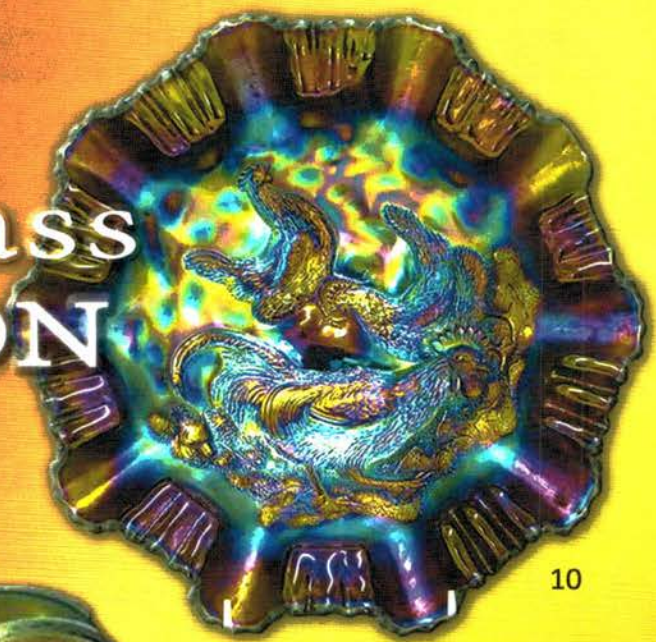


THE BALL COLLECTION

# Carnival Glass 2014 AUCTION

Saturday,  
November 15, 9:30 a.m.

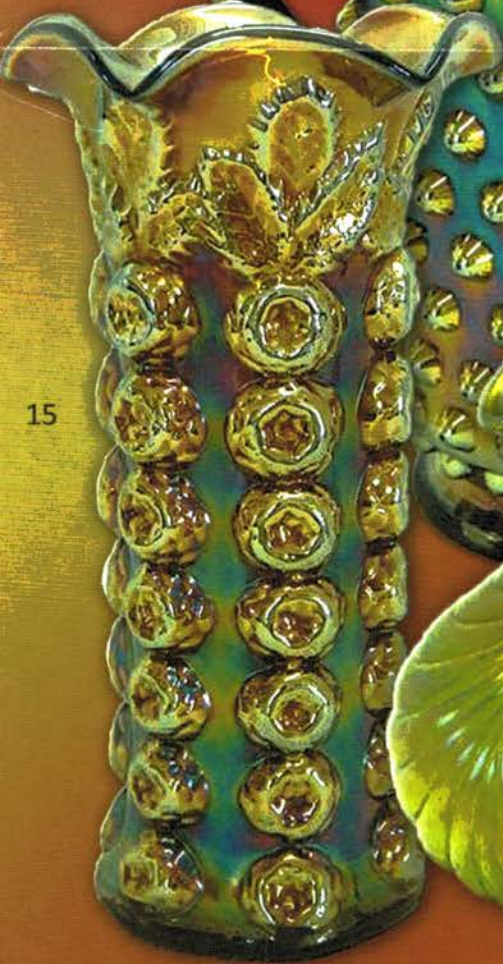


10

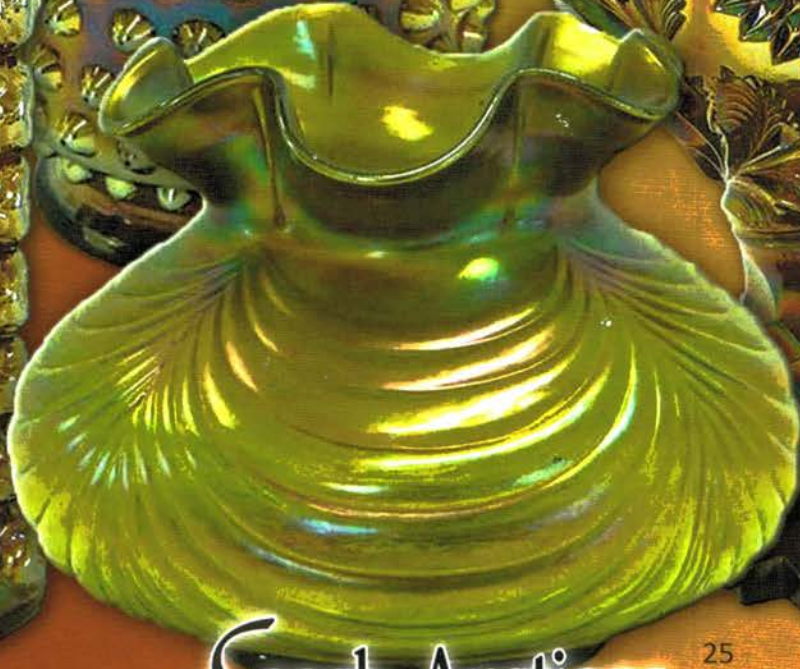
Mason City  
Senior Center  
Mason City, Iowa



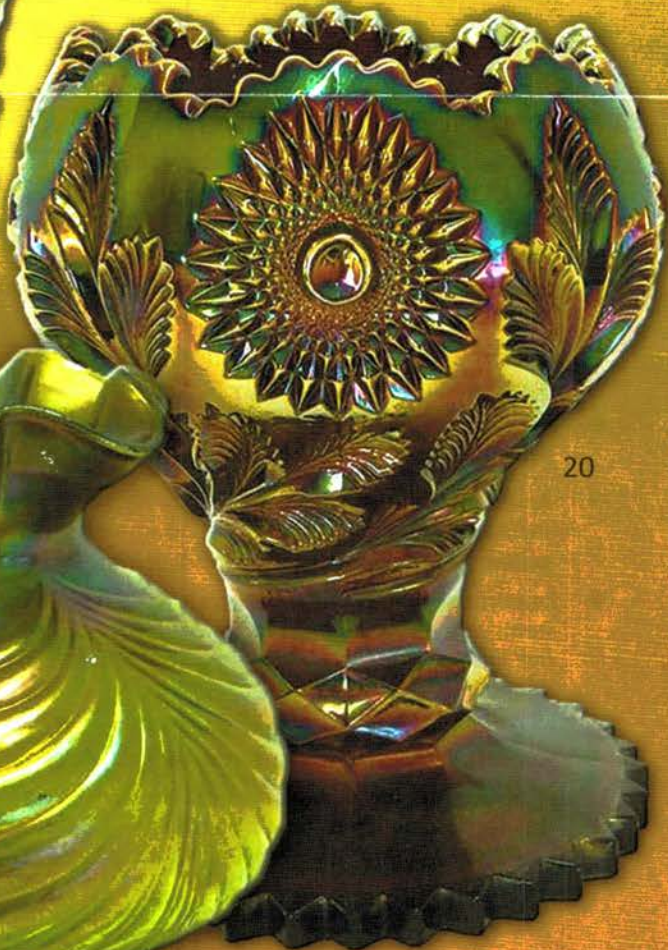
50



15



20



25

JIM & JAN SEECK

Seeck Auctions

641-424-1116



To view the complete auction, check our website at: [www.seeckauction.com](http://www.seeckauction.com)

JIM & JAN SEECK

# CARNIVAL GLASS AUCTION

641-424-1116

**Saturday, November 15 — 9:30 AM**

**Preview: Friday, November 14, 3 pm — 6 pm**

**Senior Activity Center — 326 4th St. NE — Mason City, Iowa**

**From South:** Take US Hwy 65 into Mason City and turn right or east on 4<sup>th</sup> ST NE, go two blocks. **From North:** Take US Hwy 65

into Mason City and turn left or east on 4<sup>th</sup> ST NE, go four blocks. **This is the large brown building on the west end of the block.**

## NO BUYER'S PREMIUM

**ABSENTEE BIDDING** is available on-line through Auction Flex using our online catalog at [www.seeckauction.com](http://www.seeckauction.com)

★ **Absentee bidding closes Friday, November 14 at 9 p.m. CST**

Please email us and we will put you on our email mailing list for auction notices.

e-mail: [jimjan@seeckauction.com](mailto:jimjan@seeckauction.com)

**THE COLLECTION:** Seeck Auctions is pleased to be selling the Cliff and late JoAnn Ball Collection of Carnival Glass from Missouri.

Cliff and JoAnn were very active in the Heart of America

Carnival Glass Association with Cliff serving as the Treasurer for many years. They have collected for many years and have put together a fantastic variety of quality Carnival Glass. Our only auction in Mason City this fall, we'd love to see you attend.

### Lodging

**Mason City:** Holiday Inn Express (new) – (641)424-1200; Quality Inn – (641)423-4444; Country Inn & Suites – (641)423-1770; Super 8 – (641)423-8855; Historic Park Inn Hotel – (641)422-0015;

**Clear Lake:** AmericInn – (641)357-8954; Best Western Holiday Lodge (641)357-5253.

**Terms:** Cash or Check, VISA, MasterCard & Discover accepted w/proper ID. 4% Clerking Fee on all purchases made using credit cards. Announcements made day of sale take precedence over any printed information.

### We have 3 options for absentee bidding for our *live* auctions:

1) If you **DO NOT** have internet access, you can: Call us by phone to enter your bids at (641)424-1116 **OR** by sending the numbers of the item(s) desired and the amount bid on each to: Seeck Auctions, PO Box 377, Mason City, Iowa 50402. We would prefer you call us with your bids rather than send them in a letter.) We will enter your bids into our online bidding system.

★ Have all written bids in by **Wednesday, November 12.**

2) Enter your bids from our website into our online catalog through the Auction Flex system.

- ◆ **First-time bidders: Set up your account** by creating a user name and password and filling out basic information. You will also need to **register for the auction** which will ask you to enter a valid credit card number. This card will be validated by a one time only charge of \$1 charge to your card. **You will use this user name and password for all our auctions.**
- ◆ You are not required to pay by credit card if you are successful with your online bid. We will let you know what you owe us through an email and you can decide how you would like to pay us.
- ◆ An exciting advantage to online bidding is that you can be notified by email if you are outbid on an item, which lets you increase your bid in time, or bid on something else. **There is a cutoff date and time, for each auction, for entering your bids online.** ★ **Online absentee bidding for this auction closes Friday, November 14 at 9 p.m. CST.**
- ◆ Remember that just because you are the high bidder in the online catalog, this does not mean you have won the item. Your bid still needs to **beat** the floor bidders and live phone bidders. If your high bid lands with a floor bidder during the live auction, the floor bidder takes precedence. You might want to bid higher on a highly desired item for a better chance at winning its absentee bid.
- ◆ If you do not receive an item that sold for less than your bid, assume we canceled your bid because the item had a severe manufacture problem, damage, or was not listed correctly.

3) **Live phone bidding is available on pieces with an estimated sale price of \$500 or more.** ★ Contact us by the **Thursday before the auction, which is November 13.** We will need to know the lot# and the phone number that you can be reached at on the day of the auction. We also need your home phone number if different than the above number.

Please call with questions: 641-424-1116.

If you win an online bid you will be notified by phone or e-mail between one to three days after the auction.

There is a **\$7 handling charge for each successful bid, with shipping and insurance charges additional.**

**ONLINE BID INCREMENTS:** \$1 - \$100/\$5    \$100 - \$200/\$10    \$200 - \$700/\$25    \$700 - \$1,500/\$50  
\$1,500 - \$3,000/\$100    \$3,000 - \$5,000/\$250    \$5,000+ Auctioneer's Discretion



- \_\_\_ 1. Thistle CRE bowl - green
- \_\_\_ 2. Thistle CRE bowl - amethyst
- \_\_\_ 3. Miniature Diamond Top sugar & creamer - light marigold - tiny pinpoint on corner base of creamer
- \_\_\_ 4. Miniature Daisy & Button mustard pot - light marigold - includes amber non iridized one
- \_\_\_ 5. Classic Arts powder jar w/lid - marigold - nick on inner rim of lid
- \_\_\_ 6. Classic Arts rose bowl - marigold
- \_\_\_ 7. Scroll Embossed 8" ruffled bowl w/File back - purple - nice
- \_\_\_ 8. Flower Band hair receiver - marigold
- \_\_\_ 9. Kittens cup & saucer - marigold
- \_\_\_ **10. Farmyard 3 in 1 edge bowl - purple - a super beauty, Carnival Glass classic**
- \_\_\_ 11. Wicker Basket salt & pepper - marigold - salts are clear
- \_\_\_ 12. Fenton Peacock at Urn 9" plate - blue
- \_\_\_ 13. Fenton Peacock at Urn 9" plate - marigold
- \_\_\_ 14. Fashion creamer - purple
- \_\_\_ **15. M'burg Rose Columns vase - amethyst - highly desirable, super nice**
- \_\_\_ 16. Ten Mums CRE bowl - green - very pretty, very minor pinpoint on edge
- \_\_\_ 17. Ten Mums CRE bowl - blue - nice, Cliff & JoAnn liked CRE
- \_\_\_ 18. Ten Mums CRE bowl - amethyst - super
- \_\_\_ 19. Raspberry water pitcher & 1 tumbler - purple - scarce
- \_\_\_ **20. M'burg Hobstar & Feather giant rose bowl - amethyst - fantastic irid. on this rare piece, as nice as they get**
- \_\_\_ **21. M'burg Hobstar & Feather giant rose bowl - green - another rarity**
- \_\_\_ 22. Australian Lily 10" vase - purple - 2 7/8" base
- \_\_\_ **23. Hearts & Flowers PCE bowl w/ribbed back - green - rare color, highly desired pattern**
- \_\_\_ 24. Four Flowers 6" plate - peach opal
- \_\_\_ **25. Superb Drape vase - green - only one known in green, great piece!**
- \_\_\_ 26. Two Flowers 10" ruffled bowl - blue
- \_\_\_ **27. Stippled Strawberry ruffled bowl w/ribbed back-lime green - super pretty irid., very rare color, almost ice green, right in the middle of ice green & lime green**
- \_\_\_ **28. Stippled Strawberry ruffled bowl w/ribbed back-blue - electric & super**
- \_\_\_ **29. Stippled Strawberry ruffled bowl w/ribbed back-renninger blue - scarce color**
- \_\_\_ **30. Stippled Strawberry ruffled bowl w/BW back - horehound - tiny pinpoint on point, very pretty**
- \_\_\_ **31. Stippled Strawberry ruffled bowl w/ribbed back-green - rare color, nice**
- \_\_\_ **32. Stippled Strawberry ruffled bowl w/ribbed back-purple - pretty**
- \_\_\_ **33. Cosmos & Cane 6 pc. tankard water set - honey amber - rare set, pitcher is beautiful, two heat checks in base of pitcher**
- \_\_\_ 34. Wild Rose open edge bowl - blue - has crack inside of bowl
- \_\_\_ 35. Orange Tree loving cup - amethyst - has open bubble filled with epoxy on base
- \_\_\_ 36. Orange Tree loving cup - blue - super pretty example
- \_\_\_ 36a. Orange Tree loving cup - marigold
- \_\_\_ 37. Grape & Cable 7 pc. water set - purple
- \_\_\_ 38. Grape & Cable water pitcher & 1 tumbler - marigold
- \_\_\_ 39. Daisy Squares spittoon shaped compote - marigold - scarce
- \_\_\_ **40. Christmas compote - marigold - very rare, nice**
- \_\_\_ 41. Flowers & Frames tri-cornered crimped edge dome ftd bowl - peach opal - nice
- \_\_\_ **42. Jockey Club 6" advertising bowl - purple - super pretty irid., hard to find this nice**
- \_\_\_ 43. Holly ruffled hatshape - red - nice
- \_\_\_ 44. Cathedral or Curved Star chalice - blue - hard color to find them in, nice
- \_\_\_ **45. M'burg Ohio Star vase - purple - rare & nice, very minor rub on outside of top edge**
- \_\_\_ 46. Daisy Cut bell - marigold - scarce
- \_\_\_ 47. Carnival Hobstar 4 pc. table set - purple - pretty, scarce
- \_\_\_ 48. Grape & Cable pin tray - green - very minor nick on base
- \_\_\_ 49. Grape & Cable pin tray - marigold
- \_\_\_ **50. M'burg Hobnail water pitcher - blue - extremely rare pitcher, super nice, came from the Schroeder collection**
- \_\_\_ 51. Grape & Cable hldd pin dish - green
- \_\_\_ 52. Grape & Cable banana boat - blue - scarce color, nice
- \_\_\_ 53. Grape & Cable banana boat - green - manufacture open bubble on foot
- \_\_\_ 54. M'burg Hanging Cherries 7" IC shaped bowl - green - satin
- \_\_\_ **55. Tornado 7 1/2" vase w/green tornados - marigold - very rare, especially in large size**
- \_\_\_ 56. Captive Rose CRE bowl - amethyst
- \_\_\_ 57. Captive Rose CRE bowl - green
- \_\_\_ 58. Captive Rose CRE bowl - blue
- \_\_\_ 59. Captive Rose CRE bowl - marigold - dark
- \_\_\_ **60. Persian Medallion ruffled bowl - red - very rare in this color, a top red piece**
- \_\_\_ 61. Miniature Diamond Column 3 3/4" vase - marigold - cute miniature
- \_\_\_ **62. Hearts & Flowers 9" plate w/ribbed back - white - super pretty, very frosty, just a great plate!**
- \_\_\_ **63. Hearts & Flowers 9" plate w/ribbed back - lime green - rare, large chip on back of points**
- \_\_\_ **64. Hearts & Flowers 9" plate w/ribbed back - purple - scarce**
- \_\_\_ 65. Wishbone & Spades 6" plate - purple - highly desirable
- \_\_\_ 66. Persian Medallion lg size CRE bowl - green - very nice
- \_\_\_ 67. Persian Medallion lg size CRE bowl - 6amethyst - nice



68. Wishbone epergne - marigold - lily has chip on bottom but sits fine inside holder
69. Wild Strawberry 7" handgrip plate - purple - pretty
70. **M'burg Wild Rose kerosene lamp - green - 10 3/4" high, 6 1/2" base, rare & highly desirable**
71. Miniature Banded Portland powder jar - marigold
72. M'burg Holly Sprig bonbon - amethyst - radium
73. Double Star 4 pc. water set - amethyst - rare in this color, 2 tumblers have damage
74. Double Star 3 pc. water set - green - pitcher has repaired base, one tumbler has chip
75. Target 11" vase - purple
76. **Zippered Loop small size finger lamp - marigold - 4 3/4" tall, 3 1/2" base, nice, rare**
77. Strawberry ruffled bowl w/BW back - green - super pretty
78. Strawberry ruffled bowl w/plain back - purple - pretty
79. Strawberry ruffled bowl w/plain back - marigold - pretty
80. **Dragon & Lotus IC shaped bowl - red - cherry red color & looks red, a beauty**
81. Six Petal ruffled bowl - purple - pretty
82. **Cosmos & Cane large tri-cornered dish - honey amber - rare piece**
83. Peacocks 9" plate w/ribbed back - blue - scarce, chip glued to point
84. Peacocks 9" plate w/ribbed back - purple - nice
85. Peacocks 9" plate w/ribbed back - marigold
86. Peacocks 9" plate w/ribbed back - ice green
87. M'burg Rays & Ribbons crimped edge, ruffled bowl - amethyst - radium
88. Estate 3 pc. dresser set - smokey - one stopper is not original
89. Garland & Bows cake plate - marigold
90. **Peter Rabbit IC shaped bowl - blue - very rare bowl, pretty**
91. Lions 7" IC shaped bowl - marigold
92. Miniature Morning Glory 5 1/4" vase - purple - super
93. **Homestead chop plate - purple - a beauty, as nice as they get**
94. **NUART Homestead chop plate - smoke - very rare & pretty plate, minor nick on edge**
95. S Repeat whimsy creamer - purple
96. Broken Arches punch bowl & base - purple - punch bowl has a 6" area that has been polished on the outside of bowl
97. Fishnet epergne - purple
98. Little Fishes IC shaped ftd master bowl - marigold
99. **Bulldog on base paperweight - marigold - great miniature!**
100. **Wide Panel epergne - ice blue - extremely rare & highly desirable, very pretty, crack across center of stem on base, large lily has nick on bottom of stem**
101. Estate vase - smoke
102. M'burg Nesting Swan ruffled bowl - marigold - radium, very dark for the radium examples, nice
103. M'burg Strawberry Wreath crimped edge 8" bowl - amethyst - radium, roughness on pulled point
104. **Corn vase w/plain base - marigold - very scarce**
105. **Corn vase w/stalk base - green - highly desirable**
106. Wishbone ftd ruffled bowl - purple
107. Four Seventy Four milk pitcher - olive green
108. Mikado round compote - marigold - very pretty
109. Pair of unusual salt & pepper shakers - marigold
110. **Rustic 18 1/2" funeral vase - white - very rare vase, nice**
111. **Rustic 21" funeral vase - blue - scarce**
112. Miniature Intaglio almond cup - marigold - "Souvenir of Norwalk"
113. **Dragon & Lotus ruffled bowl - peach opal - super pretty**
114. Dragon & Lotus ruffled bowl - red - pretty, several chips on edge
- 114a. Dragon & Lotus ruffled bowl - green
115. Lotus & Grape ruffled bowl - green
116. Four Flowers 6" plate - purple - fantastic irid., unfortunately large chip out of base
117. **Miniature Twigs vase - peach opal - only one known**
118. Holly CRE bowl - green
119. Holly CRE bowl - blue
120. **Oriental Poppy 5 pc. tankard water set - purple - the pitcher is outstanding!**
121. Grape & Cable master berry bowl - green - pretty, rub on one point
122. **Exchange Bank advertising handgrip 6" plate - amethyst - super pretty**
123. Peacock & Grape IC shaped bowl - blue
124. **M'burg Bernheimer Brothers Many Stars ruffled bowl - blue - very rare bowl & pretty, manufacture split on back edge, minor nick on back edge**
125. **M'burg Many Stars ruffled bowl - amethyst - radium, 6 pt star, scarce**
126. Mary Ann vase - amethyst
127. **M'burg Hanging Cherries 4 pc. table set - green - very rare set, minor chip on sugar bottom**
128. Hanging Cherries butter dish - amethyst - radium, base has large chip
129. Coin Dot CRE bowl - peach opal - rare to find this bowl in peach opal
130. **Butterfly & Tulip square shaped ftd bowl - purple - very nice one!**
131. Scales low IC shaped bowl - peach opal
132. **M'burg Trout & Fly 3 in 1 edge bowl - green - satin, scarce**
133. M'burg Trout & Fly 3 in 1 edge bowl - marigold - radium & nice, large chip off base
134. Grape & Cable hatpin holder - green - nice
135. Grape & Cable hatpin holder - purple - chip on side of foot
136. **Open Rose 9" plate - purple - rare plate, nice**



- \_\_\_ 137. Open Rose 9" plate - amber  
 \_\_\_ 138. Australian Kookaburra large ruffled bowl - marigold- nice  
 \_\_\_ 139. Acorn ruffled bowl - powder blue  
 \_\_\_ **140. Diamond Rib 19" funeral vase – amethyst - very scarce, highly desirable & nice**  
 \_\_\_ 141. Miniature Ladies slipper – marigold - minor roughness on top edge  
 \_\_\_ **142. Rose Show ruffled bowl - aqua opal - lots of opal**  
 \_\_\_ **143. Rose Show ruffled bowl - marigold - very nice**  
 \_\_\_ 144. Vintage 9" ruffled bowl - green  
 \_\_\_ **145. Colonial Lady vase – purple - rare, highly desirable**  
 \_\_\_ 146. Zippered Loop 9 1/2" kerosene lamp - marigold - 5 1/2" base, has new burner  
 \_\_\_ 147. Zippered Loop 8" kerosene lamp - marigold - 4 3/4" base  
 \_\_\_ 148. M'burg Whirling Leaves ruffled bowl - amethyst - radium  
 \_\_\_ 149. Miniature Chesterfield salt - marigold  
 \_\_\_ **150. Garden Path Variant 11" chop plate - marigold - very rare, has been a long time since selling one**  
 \_\_\_ 151. M'burg Holly Sprig spade shaped hdd nappy - amethyst - radium  
 \_\_\_ **152. N's Town Pump - purple - nice**  
 \_\_\_ 153. N's Town Pump - green - cracked  
 \_\_\_ **154. M'burg Many Stars 3 in 1 edge bowl – marigold - has 6 pt. star, radium, nice**  
 \_\_\_ **155. M'burg Many Stars 3 in 1 edge bowl - amethyst - has 5 pt. star, radium, silvery**  
 \_\_\_ 156. Ftd Prism Panels vase - marigold  
 \_\_\_ **157. M'burg Seacoast pin tray - amethyst - very scarce, highly desirable, nice**  
 \_\_\_ 158. Hattie round bowl - smoke  
 \_\_\_ **159. Vintage 10" IC shaped bowl - red - cherry red color, silvery irid.**  
 \_\_\_ 160. Daisy & Drape turned in vase - white  
 \_\_\_ 161. Miniature Winged Scroll powder jar - blue - cute  
 \_\_\_ 162. Fenton Peacock at Urn ruffled bowl - amethyst  
 \_\_\_ 163. Fenton Peacock at Urn ruffled bowl - blue  
 \_\_\_ **164. 1911 Atlantic City Elks 8" plate - blue - very rare plate, desirable**  
 \_\_\_ 165. 1914 Parkersburg Elks 8" plate - blue - rare plate, chip on face of point  
 \_\_\_ **166. Diamond Fan 3 pc. child's table set - marigold - rare miniatures**  
 \_\_\_ 167. Cobblestone ruffled bowl - purple - super pretty  
 \_\_\_ 168. Drapery rose bowl - purple  
 \_\_\_ 169. Fenton Grape & Cable ruffled fruit bowl w/plain interior - amethyst - pretty  
 \_\_\_ 170. Utah Liquors advertising 6" handgrip plate - amethyst - large repaired chip on base  
 \_\_\_ 171. Ragged Robin 3 in 1 edge bowl - amethyst  
 \_\_\_ 172. Ragged Robin 3 in 1 edge bowl - marigold  
 \_\_\_ **173. Wishbone chop plate - purple - very rare plate, nice**  
 \_\_\_ 174. Rustic mid-size 16" vase - amethyst  
 \_\_\_ 175. Rustic mid-size 16" vase - blue  
 \_\_\_ **176. Milady tankard water pitcher - blue - scarce**  
 \_\_\_ 177. Miniature Little Covered Hen - marigold  
 \_\_\_ **178. Miniature Twigs tri-cornered 4" vase – purple - silvery**  
 \_\_\_ 179. Strawberry 9" plate w/BW back - lavender - unique plate, pretty, chip on base  
 \_\_\_ 180. Strawberry 9" plate w/BW back - green  
 \_\_\_ 181. Strawberry 9" plate w/BW back - purple  
 \_\_\_ 182. Strawberry 9" plate w/plain back - marigold - dark & super, slight peeling on base  
 \_\_\_ 183. Strawberry 9" plate w/plain back - marigold  
 \_\_\_ 184. Strawberry 9" plate w/plain back - purple - this is shaped like an ice cream bowl  
 \_\_\_ 185. Good Luck PCE bowl w/ribbed back - blue - typical slight roughness between points  
 \_\_\_ 186. Good Luck PCE bowl w/ribbed back - marigold  
 \_\_\_ **187. M'burg Courthouse ruffled bowl – amethyst - scarce, silvery**  
 \_\_\_ **188. M'burg Courthouse IC shaped bowl – amethyst - silvery**  
 \_\_\_ 189. Australian Kangaroo ruffled sauce - purple  
 \_\_\_ 190. Australian Kangaroo ruffled sauce - marigold  
 \_\_\_ 191. Brooklyn Bridge 10 ruffled bowl - marigold  
 \_\_\_ **192. Ribbed Optic 16 1/2" vase - ice blue**  
 \_\_\_ 193. M'burg Holly Sprig Variant crimped edge 8" bowl - green - radium  
 \_\_\_ 194. M'burg Holly Sprig Variant crimped edge 8" bowl - marigold - radium, nice  
 \_\_\_ **195. Many Fruits 12 pc. punch set - purple - nice**  
 \_\_\_ **196. Many Fruits 12 pc. punch set – marigold - nice**  
 \_\_\_ 197. Grape & Gothic Arches cvd sugar, creamer & spooner - marigold  
 \_\_\_ 198. Holly ruffled bowl - red - minor polishing on base near seam  
 \_\_\_ 199. Holly ruffled bowl – blue  
 \_\_\_ **200. Crucifix candlesticks - marigold - rare**  
 \_\_\_ 201. Grape & Cable bonbon - green  
 \_\_\_ 202. Enameled Cherry & Little Flowers 7 pc. water set - blue - one tumbler chipped  
 \_\_\_ **203. The Central Shoe Store advertising 6" handgrip plate - amethyst - scarce**  
 \_\_\_ 204. Stippled Peacock at Urn IC sauce - blue  
 \_\_\_ **205. Grape & Cable candle lamp - marigold - scarce, nice**  
 \_\_\_ 206. 1981 HOACGA Good Luck candle lamp - red  
 \_\_\_ 207. Round Up low ruffled bowl - blue  
 \_\_\_ 208. Round Up low ruffled bowl - marigold  
 \_\_\_ **209. Stippled Strawberry PCE bowl w/ribbed back - blue - electric, nice**  
 \_\_\_ **210. Stippled Strawberry PCE bowl w/BW back - green - scarce color, nice**  
 \_\_\_ 211. Stippled Strawberry PCE bowl w/BW back - purple - scarce  
 \_\_\_ 212. Stippled Strawberry PCE bowl w/ribbed back - marigold  
 \_\_\_ 213. M'burg Primrose ruffled bowl - green - radium, nice  
 \_\_\_ 214. M'burg Primrose ruffled bowl - amethyst - radium, nice



215. Embroidered Mums ruffled bowl - blue - nice
216. Three Fruits 9" plate w/BW back - purple - chip on base
217. Three Fruits 9" plate w/BW back - marigold
218. Stag & Holly lg size deep ruffled ftd bowl - blue - super
219. M'burg Hobnail Swirl 11" vase - marigold
220. Stretch Glass Adams Rib cvd candy dish - celeste blue
221. Pair of miniature dogs - marigold - bulldog has chip on ear
222. Star of David ruffled bowl - purple - nice
223. Shell & Sand ruffled bowl - green
224. Fenton's Fine Rib 9" vase - red
225. Fenton's Fine Rib 11" vase - aqua
226. Old Rose Distillery/Stippled Grape & Cable Variant 9" plate w/ribbed back - green - super pretty, one point chipped
227. Old Rose Distillery/Stippled Grape & Cable Variant 9" plate w/ribbed back - green - looks completely different than the previous one
228. Wishbone 10" ruffled bowl - green
229. Wishbone 10" ruffled bowl - purple - small nick on collar base
230. Forty Niner powder jar - marigold - scarce miniature
231. Unusual 9 3/4" vase - marigold - not sure of this pattern
232. M'burg Hobnail Swirl rose bowl - marigold - nice
233. Strawberry PCE bowl w/plain back - green
234. Strawberry PCE bowl w/BW back - purple
235. Good Luck ruffled bowl w/ribbed back - green - has chip on base, slightly odd color
236. Three Fruits ruffled bowl w/plain back - marigold
237. **Orange Tree 13 pc. punch set - white - 6 cups have chips, scarce set**
238. Orange Tree 14 pc. punch set - marigold - nice
239. Strawberry Epergne - purple - rare, very nice, has epoxy on collar base
240. Ribbon Tie CRE bowl - blue
241. Ribbon Tie CRE bowl - green
242. Ribbon Tie CRE bowl - marigold - nice
243. M'burg Nesting Swan ruffled bowl - green - satin
244. M'burg Nesting Swan ruffled bowl - marigold - satin
245. **Hearts & Flowers ruffled compote - green - rare color, a beauty**
246. **Hearts & Flowers ruffled compote - ice blue - nice**
247. **Hearts & Flowers ruffled compote - aqua opal - nice opal**
248. **Hearts & Flowers ruffled compote - blue - electric**
249. **Hearts & Flowers ruffled compote - purple**
250. Hearts & Flowers ruffled compote - marigold
251. Hearts & Flowers ruffled compote - white
252. **Birds & Cherries CRE bowl - blue - super rare bowl especially in this shape, very minor nick off of a sharp point, nice**
253. Cosmos & Cane ruffled compote - white - nice
254. **Poppy Show vase - marigold - has manufacture spot on base, no harm**
255. Inverted Strawberry powder jar - green - spot of epoxy on side of jar on beads
256. Inverted Strawberry powder jar - marigold
257. **Poppy Show 9" plate - purple - scarce**
258. Stag & Holly lg size ftd ruffled bowl - marigold - manufacture open bubble on foot
259. Orange Tree 6 ruffled bowl - blue - nice
260. **M'burg Poppy round compote - amethyst - scarce**
261. Curved Star 5" flower pot w/frog - marigold - 6" diameter
262. Northern Lights 4" flower pot w/frog - marigold
263. Fenton's Grape & Cable 7" ruffled bowl - red
264. Davidson's Society Chocolates advertising handgrip plate - purple - chip on collar base
265. Grape & Cable shot glass - purple
266. Lot of 10 S Repeat punch cups - purple
267. Kulor 8" vase - marigold
268. **Tornado small size vase - purple - nice**
269. Horse Medallion 7" IC shaped bowl - marigold
270. Persian Garden master IC shaped bowl - white
271. **Fern Brand Chocolates advertising handgrip plate - purple**
272. Heavy Vine cvd powder jar - marigold
273. Ripple 9 1/2" vase - purple - 3 3/8" base
274. **Hearts & Flowers PCE bowl w/ribbed back - renninger blue - silvery**
275. Ring of Stars 8" vase - marigold
276. **Raspberry ftd candy dish or bowl - blue - very rare color, only a few known, nice**
277. Orange Tree mug - marigold
278. **Cosmos & Cane chop plate - honey amber - very rare item & nice**
279. **Diamond Fountain cruet - marigold - scarce novelty**
280. Persian Medallion CRE bowl - green
281. Petal & Fan lg size ruffled bowl - marigold - lots of yellow irid.
282. Vintage small size epergne - green - nicks on bottom of lily
283. Vintage small size epergne - blue - nicks on bottom of lily
284. Wild Rose syrup - marigold - crack in handle
285. Hearts & Flowers ruffled bowl w/ribbed back - ice blue
286. **Hearts & Flowers ruffled bowl w/ribbed back - marigold - super pretty, dark**
287. Grape & Cable 9" plate w/plain back - purple
288. Fruit Band shot glass AND Unknown miniature tumbler - marigold
289. Daisy Squares 2 sides up, crimped edge compote - green - scarce
290. Daisy Squares 2 sides up, crimped edge compote - amethyst - scarce
291. **Tree Trunk 12" mid-size vase - marigold**
292. Vintage 9" IC shaped bowl - powder blue
293. Paneled Forty Four toothpick holder or miniature vase - marigold - another great miniature
294. **N's Peacock at Urn 6" plate - blue - super pretty, a very rare piece**



- \_\_\_ 295. Kittens cup & saucer - marigold AND Kittens plate - marigold - plate has damage
- \_\_\_ 296. Grape & Gothic Arches 7 pc. water set - blue - scarce
- \_\_\_ 297. Stag & Holly spt ftd IC shaped bowl - marigold
- \_\_\_ 298. 1910 Detroit Elks 7" ruffled bowl - amethyst - scarce, spotty irid.
- \_\_\_ **299. Unknown Rose Bowl - marigold - has a Whirling Star & File pattern, neat rose bowl w/nice irid.**
- \_\_\_ **300. M'burg Sunflower pin tray - amethyst - rare & desirable, nice**
- \_\_\_ 301. Inverted Strawberry candlesticks - marigold - very scarce, nicks around bottoms of both sticks
- \_\_\_ 302. Fenton's Three Fruits 12 Sided plate - amethyst
- \_\_\_ 303. Grape & Cable cologne bottle - green
- \_\_\_ 304. Horse Medallion ftd rose bowl - marigold - burst in collar base
- \_\_\_ **305. Heart & Vine 9" plate - blue - nice**
- \_\_\_ 306. Leaf Columns 7" squatty vase - green - pretty
- \_\_\_ **307. Starburst spittoon - marigold - nice**
- \_\_\_ 308. M'burg Peacock master berry bowl - amethyst - radium
- \_\_\_ 309. Kittens 4 sided dish - marigold
- \_\_\_ 310. Nippon PCE bowl w/ribbed back - ice blue
- \_\_\_ 311. Ripple 18" funeral vase - marigold - super nice, scarce
- \_\_\_ 312. Blackberry miniature compote - green
- \_\_\_ 313. Australian Butterfly Bush & Xmas Bells 7 1/2" salver - dark
- \_\_\_ 314. Dandelion mug - aqua opal
- \_\_\_ 315. Boggy Bayou 10 1/2" vase - amethyst
- \_\_\_ 316. Scroll Embossed 9" plate - purple
- \_\_\_ 317. Peacock & Grape ruffled bowl - black amethyst
- \_\_\_ **318. Circle Scroll 5 1/2" vase - marigold - much more squatty than most**
- \_\_\_ 319. Captive Rose 6 ruffled bowl - green
- \_\_\_ 320. Chippendale salt - marigold - nice miniature
- \_\_\_ **321. Vintage CRE bowl - aqua opal - very scarce bowl, lacks a little irid.**
- \_\_\_ 322. Rustic 10" mid-size squatty vase - marigold - nice
- \_\_\_ 323. Wild Strawberry 10" ruffled bowl - green - nice
- \_\_\_ 324. N's Bushel Basket - black amethyst - not Carnival
- \_\_\_ **325. Gevurtz Bros Furniture & Clothing advertising ruffled bowl - amethyst - super nice**
- \_\_\_ 326. Peacock & Grape spt ftd ruffled bowl - amethyst
- \_\_\_ **327. M'burg Peacock at Urn Mystery bowl - green - satin**
- \_\_\_ 328. Lancaster #950 pair of candlesticks - marigold - 7 1/2"
- \_\_\_ 329. Honeycomb rose bowl - peach opal
- \_\_\_ **330. Dragon & Strawberry IC shaped bowl - marigold - scarce, nice**
- \_\_\_ **331. Western Thistle lg cider pitcher - blue - rare piece**
- \_\_\_ 332. Western Thistle tumbler - blue
- \_\_\_ **333. Geo. W. Getts Pianos advertising ruffled bowl - amethyst - scarce**
- \_\_\_ 334. Grape & Cable shot glass - purple
- \_\_\_ 335. Kittens toothpick - blue - nice
- \_\_\_ **336. Ribbed Tornado vase - amethyst - very rare vase, nice**
- \_\_\_ 337. Tiger Lily pitcher - lavender - contemporary, bottom marked "S" Smith
- \_\_\_ 338. M'burg Peacock at Urn 10" ruffled bowl - marigold-satin, nice
- \_\_\_ **339. Concord CRE bowl - blue - scarce in this shape**
- \_\_\_ 340. Morning Glory 17" funeral vase - marigold - scarce
- \_\_\_ 341. Buzz Saw small size cruet - green - no stopper
- \_\_\_ **342. Loganberry vase - amber - has non ruffled top, different, super pretty**
- \_\_\_ 342a. Hawaiian Lei miniature sugar bowl - marigold- cute
- \_\_\_ 343. Lot of 3 pieces - all damaged
- \_\_\_ 344. Round Up 9" plate - blue - silvery
- \_\_\_ 345. Swan salt - celeste blue
- \_\_\_ **346. M'burg Many Stars IC shaped bowl - amethyst - 5 point star, radium, silvery**
- \_\_\_ 347. Corn bottle - marigold - nice
- \_\_\_ 348. Peacocks ruffled bowl w/ribbed back - purple - minor nick between points
- \_\_\_ **349. M'burg Peacock Whimsey Proof - marigold - super nice**
- \_\_\_ 350. Persian Medallion 10" ruffled bowl - amethyst
- \_\_\_ 351. English Hobnail salt - marigold
- \_\_\_ 352. M'burg Leaf & Little Flowers ruffled compote - green - radium, nice
- \_\_\_ **353. M'burg Fleur de Lis dome ftd 3 in 1 edge bowl - marigold - radium, dark & fantastic, typical small chip on bottom of base filled with epoxy, so what**
- \_\_\_ 354. Tree Trunk 10 1/2" vase - green
- \_\_\_ **355. Amaryllis ftd plate - marigold - dark, nice**
- \_\_\_ **356. N's Thin Rib 13 1/2" mid-size vase - sapphire - rare vase, very nice**
- \_\_\_ 357. Duck ashtray - marigold - cute novelty
- \_\_\_ **358. Imperial match holder - purple - super rare novelty, nice**
- \_\_\_ 359. Orange Tree powder jar - marigold - has slight tint of green in base
- \_\_\_ 360. Twelve Lily floor lamp w/red shades, contemporary - must pick up, no shipping on this piece
- \_\_\_ 361. Misc. box lot

**At end of auction, we will have several box lots of glass, some with damage.**



Seeck Auctions  
PO Box 377  
Mason City, Iowa  
50402

PRESORTED  
FIRST CLASS MAIL  
US POSTAGE  
PAID  
MAIL EXPEDITORS



336

Carnival Glass 2014 Auction  
November 15, 9:30 a.m.  
Mason City, Iowa

T3 P1 584  
LEE MARKLEY  
BOX 306  
MENTONE IN 46539-0306



42



130



150



90



62



27



93



110



40



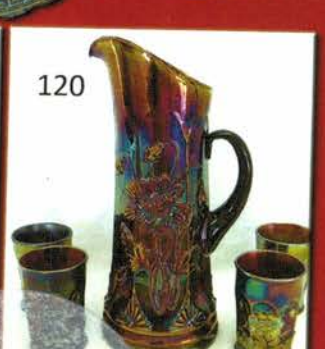
45



100



358



120