



Lot# 185

BURNS

AUCTION SERVICE

2014 GREAT LAKES

CARNIVAL GLASS

CONVENTION AUCTION

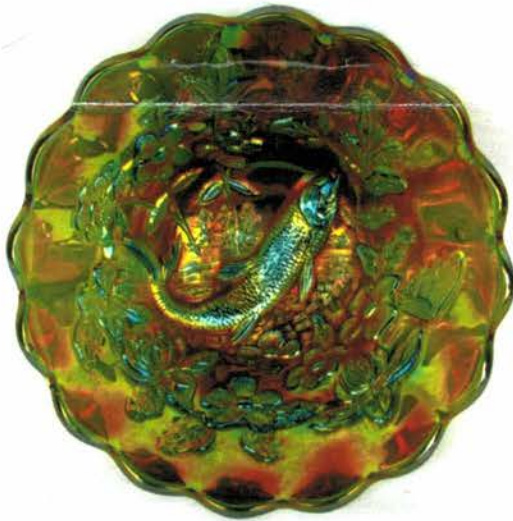
SATURDAY, NOVEMBER 1st

10:00 A.M.

Preview:

Friday evening, October 31st after banquet

Saturday, November 1st at 8:00 a.m.



Lot# 25

at the

RAMADA HOTEL & CONFERENCE CENTER

7501 W. SAGINAW HWY., LANSING, MI 48917

(Exit 93B from I 96/I 69)

CALL (517) 627-3211 FOR RESERVATIONS



Lot# 200



Lot# 150



Lot# 285

We are pleased to be able to supply the glass for the 2014 Great Lakes Carnival Glass Convention. This year's auction is highlighted with the collections of the Youngs' from FL and the Bowers from MD. The combination of these two collections makes for a very attractive selection which includes plenty of punch bowl and water sets. We hope everyone will show up for a fun time.

1. All terms and conditions as previous auctions.
2. This auction will be on auction flex. All auction flex bids are due by 6 p.m. on Friday, October 31st.
3. All photos and listings can be viewed at www.necga.com. Click on Carnival glass links page and look for Burns Auction.
4. For convention information, please call Maxine Burkhardt at 517-627-7558.
5. To leave mail or phone bids, call Tom Burns at 407-592-6552.

- | | |
|---|---|
| <p>___ 1. 1982 ICGA Elkhart, Ind. Frolicking Bear Ruffled Spittoon – Red (nice)</p> <p>___ 2. IG Fieldflower Handled Water Pitcher – Red</p> <p>___ 3. Fenton 2000 HOACGA Pansy Flat Plate – Blue (super irid.)</p> <p>___ 4. 12 ¼” Imperial Brocaded Poppy Flared Console Bowl – Pink (actually quite a scarce item; may have pinhead)</p> <p>___ 5. IMPERIAL FIELDFLOWER HANDLED WATER PITCHER – SMOKE (VERY RARE AND EXTREMELY DESIRABLE ITEM; ABSOLUTELY SUPER!!)</p> <p>___ 6. 10 3/8” IMPERIAL HOMESTEAD CHOP PLATE – SIGNED NUART – SMOKE (VERY RARE TO FIND THIS EXAMPLE WITHOUT A STRETCH EFFECT; SIGNED AND SUPER)</p> <p>___ 7. 8” Wide x 4 ¾” Tall Imperial Star and File Stemmed Cake Plate – Clamb. (or Pastel Mari.) (very rare shape with great irid.)</p> <p>___ 8. 3 ½” TALL IMPERIAL OCTAGON STEMMED CORDIAL – MARI. (RARE AND VERY DESIRABLE; GREAT COLOR)</p> <p>___ 9. 8 5/8” Imperial Cobblestone 8 Ruffled Bowl – Purp. (very scarce; very desirable; super irid.)</p> <p>___ 10. 9 ¼” IMPERIAL SAND AND SHELL FLARED PLATE – PURP. (A BEAUT!! RARE & VERY DESIRABLE; SUPER IRID.)</p> <p>___ 11. 9 3/8” Imperial Embossed Scroll Flat Plate – Purp. (very desirable; great color and irid.)</p> <p>___ 12. 8 ¼” IMPERIAL EMBOSSED SCROLL 8 RUFFLED BOWL – EMERALD GREEN (ABSOLUTELY SUPER COLOR AND IRID.; REALLY SOMETHING)</p> <p>___ 13. 8 7/8” Imperial Star of David 8 Ruffled Bowl – Purp. (very desirable item with great irid.)</p> <p>___ 14. 5 ½” IMPERIAL PANSY ONE HANDLED NAPPY – BLUE (EXTREMELY RARE COLOR FOR THIS ITEM; SUPER IRID.)</p> <p>___ 14A. IMPERIAL WAFFLE BLOCK HANDLED FLOWER BASKET – COBALT BLUE (EXTREMELY RARE COLOR FOR THIS ITEM; HAS LIGHT SILVERY IRID.)</p> | <p>___ 15. AUSTRALIAN NESTING SWAN 5 PC. RUFFLED BERRY SET – PURP. (RARE SET; LARGE IS 16 RUFFLED AND IND. ARE 12 RUFFLED; GREAT IRID.)</p> <p>___ 16. 5 5/8” Australian Kangaroo 12 Ruffled Sauce – Purp. (selling as a set)</p> <p>___ 17. 5 ½” Australian Thunderbird 12 Ruffled Sauce – Purp. (very scarce & desirable; super irid.)</p> <p>___ 18. 5 5/8” Australian Magpie 8 Ruffled Sauce – Purp. (very scarce & desirable with super irid.)</p> <p>___ 19. 9 5/8” Australian Kingfisher Lg. 12 Ruffled Bowl – Purp. (very scarce and desirable with super irid.)</p> <p>___ 20. 7 ½” Tall x 9” Diam. Australian Butterfly Bush Lg. Stemmed 12 Ruffled Compote – Purp. (super size; has a uniridized spot in center)</p> <p>___ 21. 3 ¼” Tall x 7 5/8” Diam. Australian Butterfly and Christmas Bell Flat Stemmed Compote – Purp. (super irid. and a very scarce shape)</p> <p>___ 22. 6 ¼” Australian Butterfly Bower domed Bowl – Purp. (very scarce and really nice)</p> <p>___ 23. Australian Paneled 2 Handled Open Sugar – Purp. (very scarce item with super irid.)</p> <p>___ 24. 10 ½” European Pods and Posies Lg. 8 Ruffled Bowl – Amyth. (very scarce with a nice satiny finish)</p> <p>___ 25. 3” TALL X 7 ½” DIAM. MILLERSBURG BIG FISH DEEP ROUND FLARED BOWL – GREEN (ABSOLUTELY FANTASTIC EXAMPLE; VERY RARE SHAPE WITH BRILLIANT YELLOW, RED AND BLUE RADIUM IRID.; SUPER, SUPER!!)</p> <p>___ 26. M’BURG PEACOCK AT THE URN LG. 6 RUFFLED STEMMED COMPOTE – GREEN (EXTREMELY RARE ITEM WITH A STRONG SATINY FINISH – NICE)</p> <p>___ 27. M’BURG HANGING CHERRIES 6 PC. TABLE SET – GREEN (A REALLY RARE SET TO FIND COMPLETE OUTSIDE OF HOLMES COUNTY)</p> <p>___ 28. M’burg Hanging Cherries Covered Butter, Spooner, and Creamer – Amyth. (scarce partial set)</p> |
|---|---|

- ___ 29. **M'BURG PIPE HUMIDOR – AMYTH. BASE WITH GREEN LID (LID AS IS)** 48. Fenton Paneled Dandelion Tankard Pitcher and (3) Tumblers – Green (very scarce; nice pitcher)
- ___ 30. **M'BURG ROSE COLUMNS VASE – GREEN (SATINY AND RARE)** 49. Fenton Paneled Dandelion Tankard Water Pitcher – Amyth. (very scarce; very desirable)
- ___ 30A. M'burg Swirl Hobnail Swung Vase – Mari. (very scarce – sorta mid-Marigold) 50. Fenton Paneled Dandelion 5 pc. Tankard Water Set – Mari. (scarce set with nice color and irid.)
- ___ 31. M'burg Night Star 2 Handled Bon Bon – Mari. (radium and rare) 51. **FENTON LATTICE AND GRAPE 6 PC. TANKARD WATER SET – BLUE (ALWAYS A DESIRABLE SET; NICE COLOR & IRID.)**
- ___ 32. 10" M'burg Holly Whirl 6 Ruffled Bowl – Mari. (satiny) 52. **FENTON FLUFFY PEACOCK 6 PC. WATER SET – AMYTH. (VERY SCARCE; VERY DESIRABLE; NICE)**
- ___ 33. M'burg Multi-Fruits and Flowers 8 pc. Flared Punch Set – Amyth. (rare and desirable set; has 1" flake on inside edge of bowl; nice satiny finish) 53. Fenton Fluffy Peacock Water Pitcher and (3) Tumblers – Green (very scarce & desirable)
- ___ 34. **8 7/8" M'BURG TROUT AND FLY BOWL WITH 3 IN 1 EDGE – AMYTH. (VERY DESIRABLE WITH A NICE SATINY FINISH)** 54. Fenton Fluffy Peacock 7 pc. Water Set – Mari. (very scarce; tough to find pattern)
- ___ 35. **7 1/2" M'BURG LETTERED COURTHOUSE 6 RUFFLED BOWL – AMYTH. (RADIUM; ALWAYS DESIRABLE; SUPER IRID.)** 55. **FENTON FLORAL AND GRAPE BULBOUS WATER PITCHER AND (3) TUMBLERS – GREEN (A RARE BUNCH OF GREEN; VERY DIFFICULT SET TO FIND)**
- ___ 36. 10 1/2" M'burg Hanging Cherries Lg. 6 Ruffled Bowl – Green (very scarce; satiny finish) 56. Fenton Floral and Grape Tumbler – Amyth. (super example)
- ___ 37. Cambridge Inverted Strawberry Covered Powder Jar – Green (very desirable with really nice irid.) 57. **FENTON FOOTED ORANGE TREE 7 PC. WATER SET – BLUE (RARE & DESIRABLE SET; GREAT COLOR AND IRID.)**
- ___ 38. Cambridge Inverted Thistle Pitcher and (2) Tumblers – Crystal Green / Gold (non-iridized items with excellent gold trim; very scarce) 58. (2) Fenton Footed Orange Tree Tumblers – Blue (1 is damaged; selling 2 for 1)
- ___ 39. **PAIR 9 1/2" TALL UNLISTED CRACKLE CANDLESTICKS – LT. MARI. (HERE'S AN UNUSUAL SERIES OF STICKS; THIS ONE HAS CRACKLE EFFECT)** 59. Fenton Footed Orange Tree 7 pc. Berry Set – Mari. (very scarce set – try to find one)
- ___ 40. Pair 7" Tall Unlisted Candlesticks – Lt. Mari. (unusual set; tough to find) 60. **FENTON ORANGE TREE ORCHARD BULBOUS WATER PITCHER AND (3) TUMBLERS – BLUE (ANOTHER TOUGH TO FIND SET; NICE COLOR AND IRID.)**
- ___ 41. Pair 5" Tall Unlisted Candlesticks – Mari. (cute set; great irid.; unusual) 61. Fenton Orange Tree Orchard Bulbous Water Pitcher – Mari. (scarce item; nice)
- ___ 42. Pair 9" Tall Unlisted Candlesticks – Lt. Mari. (unusual set; very different) 62. Fenton Orange Tree ftd. Ruffled Fruit Bowl – Blue (very desirable; really nice irid.)
- ___ 43. **RIIHIMAKI GRAND THISTLE HANDLED WATER PITCHER – BLUE (RARE AND DESIRABLE; NICE COLOR AND IRID.)** 63. Fenton Footed Orange Tree 6 pc. Table Set – Mari. (a very difficult set to find; nice)
- ___ 44. Fenton Leaf Tiers ftd. Creamer – Lt. Mari. (scarce item) 64. Fenton Enameled Cherries and Blossoms 7 pc. Bulbous Water Set – Blue (very scarce set)
- ___ 45. **FENTON BLUEBERRY 7 PC. BULBOUS WATER SET – BLUE (ABSOLUTELY SUPER SET – WELL MATCHED – VERY ATTRACTIVE)** 65. **FENTON IRIS / DIAGONAL BAND 7 PC. TANKARD WATER SET – MARI. (VERY DESIRABLE; TOUGH TO FIND)**
- ___ 46. **FENTON BLUEBERRY 6 PC. BULBOUS WATER SET – MARI. (SUPER SET; NICE COLOR AND VERY DESIRABLE)** 66. **FENTON IRIS / DIAGONAL BAND TANKARD PITCHER – AMYTH. (VERY DESIRABLE ITEM WITH GREAT COLOR)**
- ___ 47. **FENTON PANELED DANDELION 7 PC. TANKARD WATER SET – BLUE (VERY ATTRACTIVE AND VERY DESIRABLE SET)** 67. **FENTON FORGET ME NOT / PRISM BAND 5 PC. TANKARD WATER SET – BLUE (RARE AND VERY DESIRABLE – NICE COLOR AND IRID.)**

- ___ 68. **FENTON FORGET ME NOT / PRISM BAND 7 PC. TANKARD WATER SET – MARI. (VERY SCARCE & DESIRABLE; NICE)**
- ___ 69. **FENTON FORGET ME NOT / PRISM BAND TANKARD PITCHER AND (3) TUMBLERS – GREEN (ANOTHER VERY DESIRABLE SET; NICE)**
- ___ 70. Fenton Wreath of Roses 8 pc. Flared Punch Set with Per. Med. Int. – Mari. (scarce; well matched set)
- ___ 71. 9" Fenton Fantail / Butterfly and Berry ftd. 8 Ruffled Bowl – Blue (nice color and irid.)
- ___ 72. **FENTON ZIG ZAG / ENAM. COLUMBINE 7 PC. WATER SET – BLUE (RARE AND VERY DESIRABLE; REALLY NICE)**
- ___ 73. **FENTON ZIG ZAG / ENAM. COLUMBINE HANDLED WATER PITCHER – GREEN (RARE AND VERY DESIRABLE; NICE)**
- ___ 74. Fenton Zig Zag / Enam. Columbine Handled Water Pitcher – Amyth. (very desirable; nice)
- ___ 75. **FENTON APPLE TREE WATER PITCHER AND (2) TUMBLERS – BLUE (VERY RARE AND VERY DESIRABLE; SO VERY DIFFICULT...)**
- ___ 76. **FENTON BOUQUET BULBOUS WATER PITCHER AND (3) TUMBLERS – BLUE (VERY DESIRABLE SET – REALLY NICE)**
- ___ 77. Fenton Wreath of Roses Ruffled Punch Bowl and Base with Plain Int. – Mari. (very scarce; great color)
- ___ 78. Fenton Orange Tree Breakfast Open Sugar and Creamer – Amyth. (very scarce color)
- ___ 79. Fenton Orange Tree Breakfast Open Sugar and Creamer – Blue (nice color)
- ___ 80. **FENTON ORANGE TREE 7 PC. RUFFLED PUNCH SET – WHITE (RARE AND DESIRABLE; A BEAUTY WITH NICE FROSTY IRID.)**
- ___ 81. **FENTON ORANGE TREE COVERED POWDER JAR – AMYTH. (RARE BASE COLOR; TOUGH!)**
- ___ 82. Fenton Orange Tree Covered Powder Jar – Blue (nice color)
- ___ 83. Fenton Orange Tree Covered Powder Jar – Mari.
- ___ 84. (1) Fenton Orange Tree Goblet – Blue and (1) Fenton Orange Tree Goblet – Mari. (great color)
- ___ 85. **8 3/4" FENTON PETER RABBIT 8 RUFFLED BOWL – GREEN (VERY RARE AND EXTREMELY DESIRABLE ITEM; YELLOW HIGHLIGHTS ON A LIGHTER GREEN BASE COLOR)**
- ___ 86. 9 1/8" Fenton Three Fruits Flat Plate – Green (satiny)
- ___ 87. 10" Fenton Ten Mums 6 Ruffled Bowl – Green (satiny; lighter irid. in center)
- ___ 88. 8 1/4" Fenton Ten Mums Bowl with C.R.E. – Amyth. (scarce; satiny)
- ___ 89. 7" Fenton Leaf Chain 6 Ruffled Bowl – Amyth. (very scarce base color; satiny)
- ___ 90. **8 1/2" FENTON PEACOCK AT THE URN 8 RUFFLED BOWL – AMYTH. (VERY SCARCE WITH SUPER COLOR AND IRID. – REALLY NICE)**
- ___ 91. **FENTON PEACOCK AT THE URN STEMMED RUFFLED COMPOTE – GREEN (ACTUALLY QUITE A RARE COLOR; GREAT IRID.)**
- ___ 92. Fenton Peacock at the Urn Stemmed Ruffled Compote – Blue
- ___ 93. Fenton Persian Medallion Stemmed 6 Ruffled Crimped Edge Compote – Green (very scarce color)
- ___ 94. Fenton Persian Medallion Stemmed 6 Ruffled Crimped Edge Compote – Blue (nice item)
- ___ 95. **FENTON BUTTERFLY AND BERRY 6 PC. FTD. TABLE SET – BLUE (VERY DIFFICULT TO FIND COMPLETE; WELL MATCHED)**
- ___ 96. **FENTON BUTTERFLY AND BERRY FTD. COVERED BUTTER DISH – GREEN (RARE COLOR FOR THIS ITEM)**
- ___ 97. Fenton Fentonia ftd. Covered Sugar Bowl – Blue (rare item; lid is silvery)
- ___ 98. Fenton Fentonia ftd. Spooner – Blue (scarce; super example)
- ___ 99. Fenton Stippled Rays ftd. Breakfast Sugar and Creamer – Blue
- ___ 100. **8 3/4" FENTON CORAL 8 RUFFLED BOWL – BLUE (VERY DESIRABLE PATTERN; VERY NICE SATINY FINISH)**
- ___ 101. Fenton Vintage Grape Small size Single Lily Epergne – Blue (very scarce)
- ___ 102. Fenton Vintage Grape Small size Single Lily Epergne – Green (very scarce)
- ___ 103. Fenton Vintage Grape Small size Single Lily Epergne – Amyth. (very scarce)
- ___ 104. 9" Fenton Orange Tree with Trunk 8 Ruffled Bowl – Green (very scarce color; nice irid.)
- ___ 105. **8 1/4" FENTON PEACOCK AND GRAPE I.C. SHAPED BOWL – BLUE (SUPER EXAMPLE WITH REDDISH HIGHLIGHTS)**
- ___ 106. **FENTON LATTICE AND GRAPE TUMBLER – ELEC. BLUE (SUPER, SUPER EXAMPLE)**
- ___ 107. Fenton Butterfly and Berry Tumbler – Amyth. (super example)

- ___ 108. 9" Fenton G & C ball ftd. Flat Plate – Mari. (scarce; satiny)
- ___ 109. Fenton Stream of Hearts Stemmed 6 Ruffled Compote – Mari. (scarce)
- ___ 110. **FENTON BLACKBERRY SPRAY 4 SIDED HAT – RED (DESIRABLE; NICE IRID.)**
- ___ 111. **FENTON BLACKBERRY 2 ROW OPEN EDGE 6 RUFFLED HAT – RED (ODD AMBERINA HIGHLIGHTS; SCARCE)**
- ___ 112. 8" Fenton Stretch Cupped Bowl – Red (very desirable)
- ___ 113. Fenton Orange Tree Standard Flared Mug – Blue
- ___ 114. 9" Fenton Peacock at the Urn 6 Ruffled Bowl – Dk. Mari. (nice color)
- ___ 115. **9" FENTON DRAGON AND STRAWBERRY I.C. SHAPED BOWL – BLUE (RARE AND DESIRABLE; GREAT COLOR & DETAIL)**
- ___ 116. Fenton G & C Lg. ball ftd. Ruffled Fruit Bowl – Mari. (rare size – a rare color – try to find one)
- ___ 117. Fenton G & C ball ftd. Ruffled Fruit Bowl – Amyth. (scarce; nice color)
- ___ 118. Fenton Persian Medallion 2 sided 2 Handled Card Tray – Mari. / Vaseline (desirable base color)
- ___ 119. (1) 8 ½" Tall Fenton 3 Diamond and Bows Swung Vase and (1) 5 ½" Fenton Boggy Bayou Squatty Vase – Mari. (selling 2 for 1; small buff on base of green one)
- ___ 120. **8 7/8" N ROSE SHOW 8 RUFFLED BOWL – AQUA OPAL. (RARE AND ALWAYS DESIRABLE; NICE IRID.)**
- ___ 121. **9 ½" N ROSE SHOW FLAT PLATE – WHITE (SUPER EXAMPLE; HAS WONDERFUL IRID.)**
- ___ 122. **9 ¼" N POPPY SHOW FLARED PLATE – WHITE (ANOTHER SUPER EXAMPLE; LOTS OF BLUES)**
- ___ 123. 8 7/8" N Poppy Show 8 Ruffled Bowl – Mari. (very scarce; rough spot on one Poppy)
- ___ 124. 10" M'burg Whirling Leaves 6 Ruffled Bowl – Mari. (satiny)
- ___ 125. **9" N STRAWBERRY PLATE WITH PLAIN EXT. – LT. AMYTH. (ODD & ATTRACTIVE BASE COLOR; ONE SPOT ON EDGE NOT FILLED IN)**
- ___ 126. 9" N Strawberry Plate with Basketweave Ext. – Amyth. (scarce; nice)
- ___ 127. 8 ¾" N Strawberry Plate with Basketweave Ext. – Green (scarce; satiny)
- ___ 128. 8 ¾" N Strawberry Plate with Plain Ext. – Mari. (satiny finish)
- ___ 129. 9" N Strawberry Plate with Basketweave Ext. – Amyth. (sorta silvery / gold)
- ___ 130. 7 5/8" N Wild Strawberry Handgrip Plate with Basketweave Ext. – Mari. (scarce item)
- ___ 131. 9" N Strawberry 8 Ruffled Bowl with Basketweave Ext. – Green (satiny finish)
- ___ 132. 8 ½" N Strawberry 8 Ruffled Bowl with Basketweave Ext. – Mari. (nice example)
- ___ 133. **8 ¾" N THREE FRUITS MEDALLION FTD. 8 RUFFLED BOWL WITH MEANDER EXT. – AQUA OPAL. (RARE AND DESIRABLE; NICE OPAL.)**
- ___ 134. 4 ¾" Tall x 2 ½" Base Imperial Ripple Squatty Swung Vase – Mari. (cute size; really nice color)
- ___ 135. **12" (MAKER ?) ART GLASS SWIRL TRI-CORNERED CRIMPED EDGE BRIDES BOWL WITH POLISHED PONTIL – AQUA / MARI. (VERY UNUSUAL BLUE / AQUA COLORED BRIDES BOWL WITH A MARI. OVERLAY)**
- ___ 136. 9" N Rose Show 8 Ruffled Bowl – Blue Opal. (not carnival but very desirable)
- ___ 137. **8 ¾" N GOOD LUCK 8 RUFFLED BOWL WITH BASKETWEAVE EXT. – HOREHOUND (RARE AND DESIRABLE BASE COLOR WITH REALLY NICE IRID.)**
- ___ 138. N Eight sided Handled Bushel Basket – Green (very scarce item)
- ___ 139. N Peacock at the Urn ind. I.C. Bowl – White (scarce; pretty nice irid.)
- ___ 140. **N G & C FTD. HATPIN HOLDER – EMERALD GREEN (BRIGHT BASE COLOR WITH MULTI-COLORED IRID.)**
- ___ 141. Pair N G & C Candlesticks – Green (attractive pair with nice color and irid.)
- ___ 142. 8 ¾" N Three Fruits Bowl with P.C.E. and Plain Ext. – Pastel Mari. (odd color with a mild irid.)
- ___ 143. 9" Dugan Fanciful Flared Plate – White (scarce with great irid.)
- ___ 144. 5" Diamond Lustre and Clear Cupped Rose Bowl – Amyth. (rare base color for this maker)
- ___ 145. **DUGAN VINTAGE GRAPE COVERED POWDER JAR – PURP. (RARE AND DESIRABLE; VERY DIFFICULT TO FIND)**
- ___ 146. Dugan Vintage Grape Covered Powder Jar – Mari. (nice color)
- ___ 147. (1) Dugan Maple Leaf Tumbler and (1) Dugan Stork in the Rushes Tumbler with Lattice Band – Mari. (selling 2 for 1)

- ___ 148. (2) Dugan Grapevine Lattice Tumblers – Amyth. (1) is satiny and (1) is super; super one has base chips)
- ___ 149. Dugan Beaded Shell Tumbler – Lt. Amyth. (odd tint; satiny)
- ___ 150. **DUGAN S REPEAT 10 PC. BANQUET PUNCH SET – PURP. (VERY RARE AND VERY DESIRABLE SET; TOP IS ABSOLUTELY SUPER – A GREAT SET)**
- ___ 151. 9 ¼" Dugan Stippled Petal domed Crimped Edge Flared Plate – Purp. (rare color and shape; irid. is goldish / silvery)
- ___ 152. Dugan Holly Whirl Handled Ruffled Gravy Boat – Purp. (attractive example)
- ___ 153. Dugan Leaf Ray Ruffled Handled Nappy – Purp. (super irid.)
- ___ 154. 6" Dugan Bellflower Tri-Cornered Crimped Edge Bowl – Purp. (example has bright multi-colored highlights)
- ___ 155. **9 ¼" DUGAN WISHBONE AND SPADES I.C. SHAPED BOWL – PURP. (RARE SHAPE AND VERY DESIRABLE IRID.; THERE IS SOME WEAR ON HIGH SPOTS)**
- ___ 156. 11 – 11 ¼" Dugan Victorian Lg. 8 Ruffled Bowl – Amyth. (very scarce; satiny with an odd ruffle)
- ___ 157. 10 ½" Dugan Petal and Fan Lg. 6 Ruffled Bowl with J.H. Ext. – Purp. (very scarce; has a satiny finish)
- ___ 158. Dugan Amaryllis ftd. Tri-Cornered Compote – Purp. (rare; desirable; silvery/satiny example)
- ___ 159. Dugan Fishnet Single Lily Ruffled Epergne – Amyth. (very scarce and desirable item; satiny finish)
- ___ 160. **DUGAN PERSIAN GARDEN 2 PC. RUFFLED FRUIT BOWL AND BASE – PURP. (RARE AND VERY DESIRABLE; TOP HAS A RADIUM TYPE FINISH)**
- ___ 161. **DUGAN CHERRY WREATH HANDLED WATER PITCHER – PURP. (RARE ITEM; DARK COLOR WITH GREAT IRID.)**
- ___ 162. **DUGAN CHERRY WREATH COVERED BUTTER DISH – PURP. (RARE ITEM; SUPER IRID.; BASE SIGNED WITH DIAMOND D)**
- ___ 163. Dugan Cherry Wreath Creamer and Spooner – Purp. (well matched; selling so much each for pair)
- ___ 164. (1) Dugan Peacock at the Fountain Tumbler and (1) Dugan Stork in the Rushes Tumbler – Blue (nice examples; selling 2 for 1)
- ___ 165. **DUGAN STORK IN THE RUSHES 7 PC. PUNCH SET – AMYTH. (RARE COLOR WITH GREAT DETAIL AND IRID. – TOUGH TO FIND)**
- ___ 166. Dugan Maple Leaf Handled Water Pitcher – Purp. (scarce with typical satiny finish)
- ___ 167. (1) Dugan Maple Leaf Tumbler – Blue and (1) Dugan Rambler Rose Tumbler – Amyth. (blue example is exceptional)
- ___ 168. 9" Dugan Double Stem Rose domed I.C. Shaped Bowl – White (super irid.)
- ___ 169. Dugan Floral and Grape Bulbous Water Pitcher – Amyth. (nice transparent color & irid.)
- ___ 170. **DUGAN DAHLIA 4 PC. FTD. WATER SET – AMYTH. (RARE AND DESIRABLE; ALL 4 PIECES ARE EXCEPTIONAL)**
- ___ 171. ✓ **DUGAN DAHLIA TUMBLER – PURP. (SUPER EXAMPLE WITH GREAT COLOR AND IRID.)**
- ___ 171A. ✓ **DUGAN DAHLIA VARIANT TUMBLER – PURP (EXTREMELY RARE VARIATION)**
- ___ 171B. **DUGAN DAHLIA VARIANT TUMBLER – PURP. (EXTREMELY RARE VARIATION)**
- ___ 172. **DUGAN DAHLIA FTD. WATER PITCHER – PASTEL MARI. (PASTEL COLOR WITH SUPER IRID.)**
- ___ 173. Dugan Dahlia Tumbler – Dk. Mari. (scarce; nice color)
- ___ 174. Dugan Jeweled Heart Tumbler – Mari. (great color; scarce)
- ___ 175. **DUGAN JEWELLED HEART WATER PITCHER – DK. MARI. (SUPER EXAMPLE WITH GREAT COLOR)**
- ___ 176. Dugan Floral and Grape 5 pc. Water Set – White (quite a scarce set to find; great irid.)
- ___ 177. **N PEACOCKS 8 RUFFLED BOWL WITH RIBBED EXT. – AQUA OPAL. (RARE AND ALWAYS DESIRABLE; NICE OPAL. AND IRID.)**
- ___ 178. N Peacocks Plate with Ribbed Ext. – Mari. (scarce; nice color and irid.)
- ___ 179. N Peacocks Plate with Ribbed Ext. – White (scarce with super irid.)
- ___ 180. **N PEACH 7 PC. WATER SET – ELEC. BLUE (RARE AND VERY DESIRABLE; ALL ITEMS HAVE NICE COLOR AND IRID.)**
- ___ 181. **N G & C FTD. CENTERPIECE BOWL – ICE BLUE (RARE AND VERY DESIRABLE; GREAT COLOR AND IRID.)**
- ___ 182. **N G & C RUFFLED SMALL SIZE FRUIT BOWL – ICE BLUE (ANOTHER VERY DESIRABLE PASTEL ITEM; GREAT IRID.)**
- ___ 183. **N PEACOCK AT THE URN LG. I.C. BOWL – ICE BLUE (RARE AND VERY DESIRABLE; SUPER COLOR AND IRID.)**
- ___ 184. N Fine Cut and Roses ftd. 6 Ruffled Candy Dish with Fancy Int. – Ice Blue (super irid.)

- ___ 185. N DAISY AND DRAPE 3 FTD. TURNED IN VASE – ICE BLUE (VERY RARE AND DESIRABLE; TOUGH TO FIND; LIGHT IRID.)
- ___ 186. 10 3/4" TALL N DIAMOND POINT SWUNG VASE – AQUA OPAL. (RARE ITEM WITH A REALLY NICE OPAL. EFFECT)
- ___ 187. 8 1/2" N POPPY SHOW 8 RUFFLED BOWL – DK. ICE BLUE (RARE AND DESIRABLE; HAS AN ODD DARK TINT)
- ___ 188. 8 5/8" N ROSE SHOW 8 RUFFLED BOWL – ICE BLUE (RARE AND DESIRABLE; NICE COLOR; LIGHT IRID.)
- ___ 189. N G & C 2 PC. CANDLE LAMP – GREEN (ALWAYS DESIRABLE; PERFECT WITH NICE IRID.)
- ___ 190. N G & C 12 PC. RUFFLED BANQUET PUNCH SET – PURP. (ALWAYS DESIRABLE; PERFECT WITH NICE IRID.)
- ___ 191. N G & C Breakfast Sugar and Creamer – Purp. (open sugar is nice; creamer a bit silvery)
- ___ 192. N G & C Cologne Bottle and Stopper – Purp. (very scarce with super irid.; nice)
- ___ 193. N G & C Covered Powder Jar – Purp. (very scarce; nice item)
- ___ 194. N G & C Powder Jar – Mari. (scarce; nice color)
- ___ 195. N G & C RUFFLED MID-SIZE PUNCH BOWL AND BASE – BLUE (EXTREMELY RARE COLOR FOR THIS ITEM; NICE SATINY FINISH – TRY TO FIND ONE)
- ___ 196. N G & C RUFFLED MID-SIZE 8 PC. PUNCH SET – AMYTH. (RARE AND VERY DESIRABLE; GREAT COLOR AND IRID. – REALLY NICE SET)
- ___ 197. N G & C RUFFLED MID-SIZE 8 PC. PUNCH SET – HOREHOUND TOP; BASE AND CUPS ARE MARI. (RARE COLOR FOR TOP – NICE!)
- ___ 198. N G & C Small size ftd. Ruffled Fruit Bowl – Mari. (nice color and irid.)
- ___ 199. N G & C Breakfast Sugar and Creamer – Green (scarce; nice color)
- ___ 200. N G & C STIPPLED STANDARD SIZE 8 PC. RUFFLED PUNCH SET – GREEN (EXTREMELY RARE SET – VERY DIFFICULT TO FIND – SUPER SET)
- ___ 201. N G & C 6 pc. Table Set – Green (very scarce set in this color)
- ___ 202. N G & C STIPPLED STANDARD SIZE 8 PC. RUFFLED PUNCH SET – BLUE (VERY RARE AND VERY TOUGH; SMALL FLAKE AT BASE OF THE BASE)
- ___ 203. N G & C STIPPLED HUMIDOR – RENNINGER BLUE (BOTH TOP & BOTTOM MATCH MAKING FOR A RARE ITEM)
- ___ 204. N G & C Sweetmeat Whimsey Compote – Amyth. (very scarce with a satiny finish)
- ___ 205. N G & C STANDARD FLARED PUNCH BOWL AND BASE – PURP. (EXTREMELY RARE WITH THE FLARED TOP – SUPER IRID.)
- ___ 206. N G & C 6 pc. Table Set – Purp. (rare and very desirable – great color and irid.)
- ___ 207. N G & C Covered Handled Cracker Jar – Purp. (very scarce and very desirable)
- ___ 208. N G & C LG. RUFFLED OPEN COMPOTE – PURP. (RARE AND UNDERPRICED; GREAT COLOR AND IRID.)
- ___ 209. N G & C Covered Compote – Purp. (very scarce with nice color and irid.)
- ___ 210. N G & C 6 PC. WHISKEY SET – PURP. (RARE AND DESIRABLE SET; TOUGH TO FIND – STOPPER BASE POLISHED)
- ___ 211. (5) N G & C Stippled Handled Punch Cups – Green (scarce items – selling x 5)
- ___ 212. N G & C Candlestick – Amyth. (super)
- ___ 213. N Leaf and Beads ftd. Flat Top Rose Bowl with Floral Int. – Amyth. (odd variation with the floral int.; satiny finish)
- ___ 214. N Fine Cut and Roses ftd. Ruffled Rose Bowl – Green (super color and irid.)
- ___ 215. N WIDE PANEL LG. 4 LILY EPERGNE – AMYTH. (RARE AND VERY DESIRABLE; TOUGH COLOR WITH NICE IRID.)
- ___ 216. N Wishbone Single Lily Epergne – Green (rare and desirable; lily fits loosely)
- ___ 217. N Wishbone Single Lily Epergne – Amyth. (rare and desirable item; bottom insertion of lily is damaged)
- ___ 218. N GREEK KEY TANKARD WATER PITCHER – AMYTH. (RARE AND DESIRABLE ITEM; NICE COLOR)
- ___ 219. N Greek Key Tumbler – Purp. (scarce with really nice irid.)
- ___ 220. N MEMPHIS 6 PC. RUFFLED PUNCH SET – WHITE (RARE AND VERY DESIRABLE; FROSTY WITH GREAT IRID.)
- ___ 221. N MEMPHIS FLARED PUNCH BOWL AND BASE – PURP. (EXTREMELY RARE VARIATION; ONLY THE 2ND I'VE SEEN)
- ___ 222. N MEMPHIS 8 PC. RUFFLED FRUIT BOWL SET – PURP. (RARE AND DESIRABLE SET; GREAT COLOR – WELL MATCHED)
- ___ 223. N Memphis 8 pc. Ruffled Fruit Bowl Set – Dk. Mari. (super set; nice color and irid.)

- ___ 224. **N MEMPHIS 8 RUFFLED MASTER BERRY BOWL – PURP. (EXTREMELY RARE TO FIND THIS ITEM IN THIS COLOR)**
 ___ 225. N Memphis 6 pc. Flared Berry Set – Dk. Mari. (very scarce set; nice color and irid.)
 ___ 226. **N DRAPERY RUFFLED ROSE BOWL – AQUA OPAL. (RARE AND ALWAYS DESIRABLE; NICE COLOR AND IRID.)**
 ___ 227. N Drapery Ruffled Rose Bowl – Amyth. (a lighter color with really nice irid.)
 ___ 228. N Drapery Ruffled Rose Bowl – Dk. Mari. (super color and irid.; nice item)
 ___ 229. N Drapery Ruffled Rose Bowl with Plain Edge – White (rare with a nice frosty finish)
 ___ 230. **N PEACOCK AT THE URN LG. I.C. BOWL – ICE GREEN (RARE AND DESIRABLE; GREAT COLOR AND IRID.)**
 ___ 231. (3) N Peacock at the Urn Ind. I.C. Bowls – Ice Green (selling so much each x 3; silvery)
 ___ 232. **N PEACOCK AT THE URN LG. I.C. BOWL – ELEC. BLUE (RARE & VERY DESIRABLE WITH NICE BLUE HIGHLIGHTS)**
 ___ 233. N Peacock at the Urn Lg. I.C. Bowl – Purp. (very scarce; has a sorta radium finish)
 ___ 234. **N PEACOCK AT THE FOUNTAIN STEMMED 6 RUFFLED COMPOTE – MARI. (RARE AND UNDERPRICED; NICE COLOR WITH REALLY NICE IRID.)**
 ___ 235. **N PEACOCKS 8 RUFFLED BOWL WITH RIBBED EXT. – AQUA OPAL. (RARE AND DESIRABLE WITH NICE OPAL.)**
 ___ 236. **N PEACOCKS BOWL WITH P.C.E. AND RIBBED EXT. – PURP. (ABSOLUTELY SUPER EXAMPLE WITH EXCELLENT IRID.)**
 ___ 237. **N PEACOCKS PLATE WITH RIBBED EXT. – BLUE (VERY SCARCE; NICE SATINY BLUE FINISH)**
 ___ 238. N Peacocks 8 Ruffled Bowl with Basketweave Ext. – Purp. (rare variation; great color and irid.)
 ___ 239. N Rosette ftd. 8 Ruffled Bowl with Ruffles and Rings Ext. – Amyth. (scarce; nice color)
 ___ 240. **N HEARTS AND FLOWERS STEMMED 6 RUFFLED COMPOTE WITH RIBBED EXT. – AQUA OPAL. (VERY SCARCE; NICE COLOR AND OPAL.)**
 ___ 241. N Hearts and Flowers Stemmed 6 Ruffled Compote with Ribbed Ext. – Blue (very scarce with a nice blue base color)
 ___ 242. N Hearts and Flowers Stemmed 6 Ruffled Compote with Ribbed Ext. – Dk. Mari. (excellent example; dark and nice)
 ___ 243. N Hearts and Flowers Stemmed 6 Ruffled Compote with Plain Ext. – White (scarce; frosty)
 ___ 244. N Greek Key 8 Ruffled Bowl with Basketweave Ext. – Purp. (scarce; nice example)
- ___ 245. **N SINGING BIRDS HANDLED WATER PITCHER – PURP. (VERY SCARCE WITH A NICE MULTI-COLORED IRID.)**
 ___ 246. N Singing Birds Covered Butter Dish – Purp. (very scarce; nice dark color and irid.)
 ___ 247. N Singing Birds Covered Sugar Bowl – Purp. (very scarce part; goldish)
 ___ 248. N Singing Birds Handled Spooner – Green (scarce; nice color)
 ___ 249. N Singing Birds Handled Creamer – Green (scarce; nice color)
 ___ 250. **N SINGING BIRDS COVERED BUTTER DISH – GREEN (RARE COLOR; NICE EXAMPLE)**
 ___ 251. N G & C Variant 8 Ruffled Bowl with Plain Ext. – Amyth. (low ruffled with a bronze finish)
 ___ 252. N G & C Variant 8 Ruffled Bowl with Plain Ext. – Green (gold and reds)
 ___ 253. N G & C Flared Plate with Basketweave Ext. – Lt. Mari.
 ___ 254. N Acorn Burr Tumbler – Green (super example with reddish highlights)
 ___ 255. N Grape and Gothic Arches 7 pc. Water Set – Blue (very scarce; nice color)
 ___ 256. **9 ¼" N GOOD LUCK PLATE WITH BASKETWEAVE EXT. – PURP. (VERY SCARCE; FLAT WITH MULTI-COLORED IRID.)**
 ___ 257. N Good Luck 8 Ruffled Bowl with Ribbed Ext. – Blue (scarce and desirable with multi-colored yellow highlights)
 ___ 258. 7 ½" N Fruit and Flowers Plate with Basketweave Ext. – Custard / Nutmeg (nice nutmeg)
 ___ 259. 7 ½" N Fruit and Flowers 6 Ruffled Bowl with Basketweave Ext. – Blue (scarce item)
 ___ 260. **N THREE FRUITS MEDALLION STIPPLED FTD. 8 RUFFLED BOWL WITH MEANDER EXT. – AQUA OPAL. (RARE AND ALWAYS DESIRABLE; NICE OPAL.)**
 ___ 261. N Three Fruits Medallion Stippled ftd. 8 Ruffled Bowl with Meander Ext. – Purp. (really nice irid.; very attractive)
 ___ 262. N Three Fruits Medallion ftd. 8 Ruffled Bowl with Meander Ext. – Purp. (really nice irid.; attractive)
 ___ 263. N Three Fruits Plate with Basketweave Ext. – Amyth. (scarce; nice example)
 ___ 264. N Three Fruits Flared Plate with Basketweave Ext. – Mari.
 ___ 265. N Three Fruits Stippled Flared Plate with Ribbed Ext. – Mari. (scarce; nice color and irid.)
 ___ 266. **10" N WISHBONE LG. BOWL WITH P.C.E. AND BASKETWEAVE EXT. – GREEN (VERY ATTRACTIVE WITH SUPER IRID.)**

- ___267. **N WISHBONE FTD. 8 RUFFLED BOWL WITH RUFFLES AND RINGS EXT. – BLUE (RARE COLOR & VERY TOUGH TO FIND)**
- ___268. N Wishbone ftd. 8 Ruffled Bowl with Ruffles and Rings Ext. – Purp. (nice satiny finish)
- ___269. N Wishbone ftd. Flared Plate with Ruffles and Rings Ext. – Lt. Amyth. (scarce base color; very spotty irid.)
- ___270. N Springtime Covered Butter Dish – Green (rare with great color and irid.; base has some edge flakes)
- ___271. N Springtime Spooner – Green (very scarce; nice example)
- ___272. N Springtime Handled Creamer – Purp. (very scarce; nice)
- ___273. N Grape and Gothic Arches Covered Sugar – Green (super example; scarce)
- ___274. N Grape and Gothic Arches Handled Spooner – Green (another super example)
- ___275. N Grape and Gothic Arches Spooner, Creamer and Sugar without a lid – Blue (selling all 3 for 1 money)
- ___276. ✓ **N RASPBERRY TUMBLER – HOREHOUND (VERY SCARCE BASE COLOR)**
- ___277. N Raspberry Tumbler – Green (nice example)
- ___278. (1) N Raspberry Tumbler, (1) N G & C Tumbler – Mari. (selling x 2)
- ___279. N Grape Arbor Tumbler – Mari. (nice color)
- ___280. **N STRAWBERRY STIPPLED 8 RUFFLED BOWL WITH RIBBED EXT. – ODD BLUE (NARROW BASE, NON-IRIDIZED EXT. WITH REDDISH HIGHLIGHTS)**
- ___281. N Strawberry Stippled 8 Ruffled Bowl with Ribbed Ext. – Purp. (nice irid.; scarce)
- ___282. N Strawberry Bowl with P.C.E. and Basketweave Ext. – Purp. (nice example)
- ___283. N Grape and Gothic Arches 7 pc. Water Set – Mari.
- ___284. N G & C Covered Sweetmeat Compote – Purp. (scarce; nice)
- ___285. **N G & C 8 PC. STANDARD RUFFLED PUNCH BOWL SET – PURP. (THIS IS FANTASTIC; ELEC. BLUE AND RED HIGHLIGHTS; MAY HAVE TINY BRUISE ON INSIDE OF BOWL)**
- ___286. N G & C 8 pc. Standard Ruffled Punch Set – Mari. (nice laid back irid.; very scarce and desirable)
- ___287. **N G & C TANKARD WATER PITCHER – PURP. (RARE ITEM WITH A NICE SATINY FINISH)**
- ___288. N G & C Tankard Tumbler – Purp. (scarce item; nice)
- ___289. N G & C Cologne Bottle and Stopper – Purp. (scarce item; nice color and irid.)
- ___290. **N G & C 2 PC. CANDLE LAMP – AMYTH. (RARE AND VERY DESIRABLE; ONE OF THE BETTER EXAMPLES)**
- ___291. **N G & C 2 PC. CANDLE LAMP – MARI. (VERY SCARCE; NICE ITEM)**
- ___292. N G & C 7 pc. Water Set – Purp. (scarce; well matched set)
- ___293. N G & C 7 pc. Water Set – Mari. (nice and dark; well matched set)
- ___294. **N ENAMELED DAISY AND LITTLE FLOWERS 7 PC. BULBOUS WATER SET – BLUE (RARE AND VERY DESIRABLE SET; WELL MATCHED AND NICE)**
- ___295. **N PEACOCK AT THE FOUNTAIN WATER PITCHER – BLUE (VERY SCARCE AND VERY DESIRABLE)**
- ___296. N Peacock at the Fountain Tumbler – Purp. (nice dark example)
- ___297. N Peacock at the Fountain Ruffled Punch Bowl and Base – Mari. (very scarce; inside of bowl has salt spray)
- ___298. (2) N Peacock at the Fountain Handled Punch Cups – Mari. (one is dark; one is light – selling the pair)
- ___299. N Peacock at the Fountain 7 pc. Water Set – Dk. Mari. (nice dark example; well matched)
- ___300. **N SPRINGTIME HANDLED WATER PITCHER – PURP. (RARE AND VERY DESIRABLE; ONE OF THE BETTER EXAMPLES I'VE SEEN)**
- ___301. N Springtime Tumbler – Purp. (scarce; nice color)
- ___302. **N ACORN BURR HANDLED WATER PITCHER – PURP. (NICE EXAMPLE WITH ABOVE AVERAGE IRID.)**
- ___303. N Acorn Burr Tumbler – Purp. (super irid.)
- ___304. **N SINGING BIRDS 7 PC. WATER SET – GREEN / EMERALD GREEN (MOST PEOPLE WOULD CALL THIS EMERALD GREEN; TUMBLERS ARE SUPER)**
- ___305. N Singing Birds 7 pc. Water Set – Mari. (very scarce set; nice color)
- ___306. Big Butterfly (or Scarab) Hatpin – Dark
- ___307. Top of the Walk Hatpin – Dark
- ___308. Triad Hatpin – Dark
- ___309. Unknown to Me – Dark (a beauty)
- ___310. Rooster Hatpin – Red / Black Decor.
- ___311. Bee and Honeycomb Hatpin – non-iridized Amber
- ___312. Bee and Honeycomb Hatpin – non-iridized Blue
- ___313. Bee and Honeycomb Hatpin – non-iridized Green
- ___314. Mirror Style Hatpin – non-iridized Black
- ___315. N G & C Ruffled Hat – Amyth.
- ___316. Dugan Leaf Ray Handled Nappy – Purp.
- ___317. Fenton Vintage Grape 3 ftd. Fern Dish – Blue
- ___318. Cambrigde Inverted Feather Cracker Jar base only – Green...plus a couple more surprises.

DONALD DORAIS
150 HIGHLAND AVENUE
CUMBERLAND, RI 02864

BURNS

AUCTION SERVICE



VISIT www.necga.com

for pictures and brochures.
Click on carnival glass links
page. Look for Burns Auction.

AUCTION FLEX AVAILABLE FOR
THIS AUCTION.

LEE MARKLEY
BOX 306
MENTONE, IN 46539

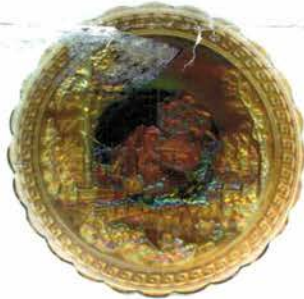


Lot# 85

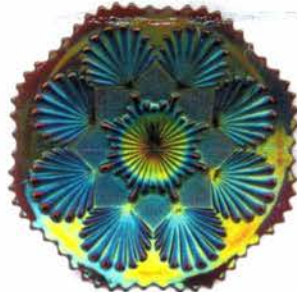
CARNIVAL GLASS AUCTION SAT., NOV. 1st at 10:00 AM



Lot# 180



Lot# 6



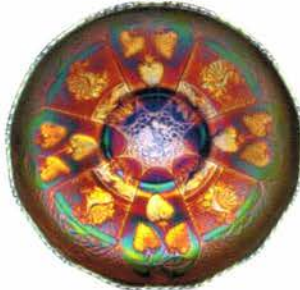
Lot# 10



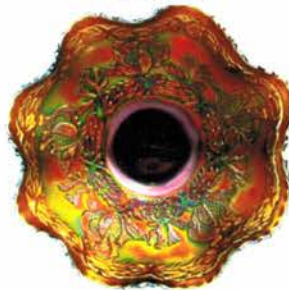
Lot# 304



Lot# 75



Lot# 115



Lot# 100



Lot# 76



Lot# 65



Lot# 221



Lot# 160



Lot# 68