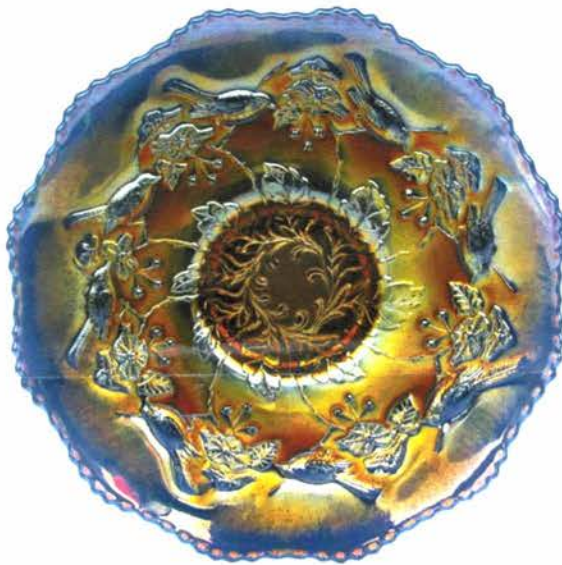




Lot# 350



Lot# 325

BURNS

AUCTION SERVICE

MID-ATLANTIC CARNIVAL

GLASS JAMBOREE

AUCTION

SATURDAY, OCTOBER 25th

at 9:30 A.M.

**Preview: Friday evening and
Saturday at 8:00 a.m.**

at the RAMADA PLAZA HOTEL
HAGERSTOWN, MD

(301) 797-2500

The hotel is located at 1718 Underpass Way,
Exit 5A on I-81.

For more information or to leave mail bids,
call Tom Burns at 407-592-6552



Lot# 100



Lot# 110



Lot# 240

Hello again! We find ourselves here in Hagerstown for the 2014 Mid-Atlantic Carnival Glass Jamboree Auction. This year's auction is primarily the glass of the Clardy's collection from Alabama and the Bowers from Western Maryland along with some other highlights. The Ramada Inn will host the event. Please make your hotel reservations by calling (301)797-2500.

All terms and conditions as previous auctions.

This auction will be on auction flex. All auction flex bids are due by 11:59 p.m. on Thursday, October 23rd.

All photos and listings can be viewed at www.necga.com. Click on Carnival glass links Page and look for Burns Auction.

For further information on the Mid-Atlantic Jamboree, call Tom Burns at (407) 592-6552 or Connie O'Connor at 703-524-0752 or email at glassconnie@comcast.net.

- | | | | |
|---------|--|---------|---|
| ___ 1. | 5 pc Lot; (1) 5 1/4" St. Clair Paneled Grape Plate and (1) Creamer, (1) Fenton Nesting Swan Mug – Blue; and (2) St. Clair Toothpicks – Cherry Wreath and Argonaut Shell – Mari. (selling as one lot) | ___ 25. | 9 3/8" AUSTRALIAN NESTING SWAN LG. 16 RUFFLED BOWL – PURP. (RARE & DESIRABLE; NICE COLOR AND IRID.) |
| ___ 2. | 4 pc. Lot; (2) Westmoreland Pastel Hats – (1) Gray, (1) Mari.; (1) Czech Shot Glass – Mari.; (1) Nuggets Handled Creamer – Blue (selling as a lot) | ___ 26. | 9 5/8" AUSTRALIAN KANGAROO LG. 16 RUFFLED BOWL – PURP. (RARE ITEM; IRID. IS SPOTTY ON INSIDE OF PATTERN) |
| ___ 3. | Lot (12) Buttons, (1) Lacy Dress Trim and (1) Beaded Necklace – Dark (very scarce; nice assortment; selling for one money) | ___ 27. | 9 1/2" AUSTRALIAN THUNDERBIRD LG. 12 RUFFLED BOWL – MARI. (VERY SCARCE ITEM; NICE COLOR AND IRID.) |
| ___ 4. | Beaded String Purse – Dark | ___ 28. | 4 1/4" TALL X 7 3/8" AUSTRALIAN BUTTERFLY AND BELLS STEMMED ROUND COMPOTE – PURP. (VERY SCARCE; GREAT COLOR AND IRID.) |
| ___ 5. | 11" x 6 1/2" Beaded Purse with String Handle – Dark | ___ 29. | 4 3/8" TALL X 7 1/4" AUSTRALIAN BUTTERFLY BOWER STEMMED ROUND COMPOTE – DK. MARI. (ANOTHER SCARCE ITEM; GREAT COLOR) |
| ___ 6. | Fenton Deep Round Nut Cup – Grecian Gold (scarce) | ___ 30. | 8 3/8" M'burg Little Stars Ice Cream Shaped Bowl – Green (rare size and shape; has a buffed base) |
| ___ 7. | Fenton Flared Round ftd. Salt – Grecian Gold | ___ 31. | 10 1/4" M'burg Hanging Cherries Lg. Ice Cream Shaped Bowl – Green (satiny and desirable; nice color and irid.) |
| ___ 8. | 6" x 2 1/2" Novelty Scroll Oval Pin Tray – Lt. Mari. (very scarce) | ___ 32. | M'BURG LEAF AND LITTLE FLOWERS MINIATURE STEMMED FLARED COMPOTE – AMYTH. (VERY SCARCE AND DESIRABLE; RADIUM) |
| ___ 9. | 3 1/8" Tall Wide Panel Stemmed Cordial – Mari. (very scarce; nice) | ___ 33. | M'burg Boutonniere Stemmed 6 Ruffled Compote – Amyth. (satiny finish) |
| ___ 10. | DUGAN PASTEL SWAN MASTER SALT – PURP. (SUPER IRID.; VERY DESIRABLE AND REALLY NICE) | ___ 34. | 9 1/2" M'burg Holly Whirl 6 Ruffled Bowl – Mari. (satiny finish) |
| ___ 11. | (Maker ?) Pastel Swan Master Salt – Teal (odd base color; very attractive) | ___ 35. | M'BURG SUNFLOWER PIN TRAY – GREEN (RARE AND DESIRABLE; SATINY AND VERY TOUGH) |
| ___ 12. | Dugan Pastel Swan Master Salt – Lt. P. Opal. (scarce; light in color – opal. on head) | ___ 36. | M'BURG SEACOAST PIN TRAY – AMYTH. (ANOTHER RARE ITEM WITH A SATINY FINISH) |
| ___ 13. | Dugan Pastel Swan Master Salt – Lt. Mari. (scarce; light color) | ___ 37. | 9 1/4" M'BURG TROUT AND FLY 6 RUFFLED BOWL – AMYTH. (DESIRABLE WITH EXCELLENT SATINY FINISH; NICE) |
| ___ 14. | (3) Pastel Swan Master Salts – (1) Ice Green, (1) Pink, (1) Celeste Blue (selling 3 for 1 money) | ___ 38. | 9 7/8" M'burg Nesting Swan 6 Ruffled Bowl – Amyth. (very scarce; desirable radium finish) |
| ___ 15. | SIGNED HEISEY MELLON RIBBED SPITTOON – LT. MARI. (SIGNED AND VERY DESIRABLE) | ___ 39. | 10 1/4" M'burg Peacock at the Urn Lg. 6 Ruffled Bowl – Amyth. (scarce item with a satiny finish) |
| ___ 16. | Maker (?) 14 Ruffled Toothpick Holder with Polished Pontil – Mari. (very scarce item; tough to find) | ___ 40. | M'BURG HOBSTAR AND FEATHER FLARED 6 PC. BANQUET PUNCH SET – MARI. (VERY DESIRABLE SET; HAS SMALL FLAKE ON POINT OF BASE) |
| ___ 17. | European Ranger Mini Shot Glass – Dark Glass (super color; very scarce) | ___ 41. | M'BURG HANGING CHERRIES HANDLED WATER PITCHER – AMYTH. (RARE AND DESIRABLE; SATINY AND DIFFICULT TO FIND) |
| ___ 18. | Depression Era Mellon Rib Salt and Pepper Shakers – Lt. Mari. (scarce pair) | ___ 42. | M'burg Hanging Cherries 6 pc. Table Set – Amyth. (scarce set with a satiny finish; butter base damage) |
| ___ 19. | 8 3/4" Tall Czech Mellon Rib Decanter and Stopper – Mari. / Clear | | |
| ___ 20. | Czech 6 pc. Bulbous Waist Cordial Set – Clear / Dk. Mari. (scarce set; cute cordials) | | |
| ___ 21. | 8 7/8" Tall Jain Elephant 9 Ruffled Vase – Mari. (scarce) | | |
| ___ 22. | 8 5/8" Tall Jain 9 Ruffled Left Hand Vase – Mari. (scarce) | | |
| ___ 23. | Maker (?) LBJ Hat Ashtray – Mari. | | |
| ___ 24. | U.S. Glass Cosmos and Cane Tumbler – Honey Amber | | |

- ___43. M'burg Hanging Cherries 6 pc. Table Set – Mari. (very scarce set; perfect and nice)
- ___44. M'burg Diamond 7 pc. Water Set – Green (scarce set; complete and nice)
- ___45. **CAMBRIDGE SMALL SIZE BUZZ SAW CRUET AND STOPPER – GREEN (RARE AND DESIRABLE; PERFECT AND NICE)**
- ___46. Cambridge Double Star Tumbler – Green (nice color)
- ___47. Cambridge Inverted Strawberry 6 pc. Table Set – Amyth. (very rare set; may have a couple of dings)
- ___48. M'burg Country Kitchen Butter lid only – Amyth. (tough part)
- ___49. Newer Fenton Hanging Cherries Creamer and Spooner – Purp. (contemporary pair)
- ___50. **WESTMORELAND DAISY SQUARES STEMMED CRIMPED EDGE 2 SIDED COMPOTE – MARI. (RARE ITEM IN A RARE SHAPE; TOUGH!)**
- ___51. Westmoreland Estate Perfume Bottle and Stopper and a 6" Estate Bud Vase – Smoke Flash / Amyth. (selling pair for one money)
- ___52. Westmoreland Estate Breakfast Sugar and Creamer – Lt. P. Opal. (scarce pair)
- ___53. (1) Westmoreland Estate Handled Mug and (1) Bo Peep Handled Mug – Mari. (selling 2 for one)
- ___54. Westmoreland ABC Cereal Bowl and a Fruit Salad Handled Punch Cup – Mari. (selling 2 for one)
- ___55. **9 ¾" TALL WESTMORELAND CORINTH J.I.P. VASE – BLUE OPAL. (VERY DESIRABLE; NICE COLOR AND OPAL.)**
- ___56. 8 ½" Westmoreland Wide Panel Flat Plate – Teal (scarce color)
- ___57. (2) 6 ¼ - 6 ½" Westmoreland Scales Underplates – Amyth. (selling pair for one)
- ___58. Westmoreland Wild Rose Handled Syrup Jug – Mari. (needs new replacement lid; syrup is OK; scarce)
- ___59. (1) Westmoreland Miniature Shell Mint Dish & (1) Louisa ftd. Rose Bowl – Amyth. (selling 2 for 1)
- ___60. **ELEGANCE HATPIN – PURP. (RARE; VERY DESIRABLE)**
- ___61. Border Path (or Squares and Triangles) Hatpin – Dark (rare; desirable)
- ___62. Bars and Beads Hatpin – Dark (very desirable)
- ___63. Tufted Throw Pillow Hatpin – Dark (very desirable)
- ___64. Circle Delight Hatpin – Dark with Blue Highlights (rare; desirable)
- ___65. Faceted Circle Hatpin – Dark (very desirable)
- ___66. Butlers Mirror Hatpin – Dark (scarce)
- ___67. Six Plums (Cattails) Hatpin – Dark (scarce)
- ___68. Flower Arcs Hatpin – Dark (very desirable)
- ___69. Hearts and Cross (Four Hearts) Hatpin – Dark (scarce; very desirable)
- ___70. Dragonflies (Triplets) Hatpin – Dark (scarce; nice)
- ___71. Scarab (Big Butterfly) Hatpin – Dark (scarce)
- ___72. Circled Basketweave (Criss Cross) Hatpin – Dark (very scarce; nice)
- ___73. Dogwood Hatpin – Dark (scarce; nice)
- ___74. Penstar Hatpin – Dark (nice; very desirable)
- ___75. **10 ½" DUGAN FARMYARD LG. 6 RUFFLED BOWL WITH J.H. EXT. – PURP. (RARE AND VERY DESIRABLE; NICE COLOR AND IRID. WITH GOLD HIGHLIGHTS)**
- ___76. **8 ¾" DUGAN FANCIFUL FLAT PLATE – PURP. (SORTA RADIUM FINISH – FLAT AND NICE)**
- ___77. **9" DUGAN ROUND UP FLAT PLATE – BLUE (ANOTHER FLAT ITEM WITH A RADIUM FINISH)**
- ___78. 6 3/8" Dugan Wishbone and Spades Flat Plate with Plain Ext. – P. Opal. (excellent example; nice Mari. and super Opal.)
- ___79. 6 5/8" Dugan Wishbone and Spades Flat Plate with Basketweave Ext. – Purp. (very scarce with nice irid.; tough to find)
- ___80. **6 ½" DUGAN JEWEL HEART EXT. / RIBBED INT. HANDLED BASKET – P. OPAL. (RARE AND VERY DESIRABLE ITEM; SUPER EXAMPLE)**
- ___81. **6 ¾" DUGAN PERSIAN GARDEN FLAT PLATE – P. OPAL. (RARE AND DESIRABLE; GREAT OPAL. AND IRID.)**
- ___82. 6" Dugan Four Flowers 6 Ruffled Sauce – P. Opal. (nice opal.)
- ___83. 7 5/8" Dugan Venetian Line Tri-Cornered Swung Vase – P. Opal. (scarce item)
- ___84. 11 ¾" Tall Dugan Pulled Loop Swung Vase – P. Opal. (super example)
- ___85. **DUGAN FISHNET SINGLE LILY EPERGNE WITH 3 IN 1 CRIMPED EDGE – P. OPAL. (VERY SCARCE; REALLY NICE OPAL. AND MARI. OVERLAY)**
- ___86. Dugan Honeycomb Rose Bowl – P. Opal. (very scarce; nice opal.)
- ___87. 8 ½" Dugan Apple Blossom Twig Flared Plate with Basketweave Ext. – P. Opal. (another excellent example; great opal.)
- ___88. 9" Dugan Dogwood Spray domed Tri-Cornered Crimped Edge Bowl – (scarce shape; nice opal.)
- ___89. (1) Dugan Miniature Basketweave Basket and (1) U.S. Glass Paneled Handled Mini Basket – Mari. (selling 2 for 1)
- ___90. **DUGAN RAMBLER ROSE 6 PC. BULBOUS WATER SET – BLUE (RARE COLOR; VERY DESIRABLE SET)**
- ___91. **9" DUGAN FLOWERS AND FRAMES DOMED 10 RUFFLED BOWL – PURP. (RARE AND VERY DESIRABLE; SUPER IRID.)**
- ___92. **9 ½" DUGAN CHERRIES 6 RUFFLED BOWL WITH J.H. EXT. – PURP. (ABSOLUTELY SUPER IRID.; ONE OF THE BEST!!)**
- ___92A. 9" Dugan Cherries Ice Cream Shaped Bowl with J.H. Ext. – Lt. Amyth. (very unusual base color – wants to be Lavender)
- ___93. **DUGAN STRAWBERRY 2 PC. EPERGNE – PURP. (RARE AND DESIRABLE; SUPER IRID.; BASE OF LILY IS ROUGH)**
- ___94. 8 ¾" Dugan Apple Blossom Twig Flat Plate – Blue (has a goldish / silvery radium finish)
- ___95. **DUGAN PEACOCK AT THE FOUNTAIN 7 PC. WATER SET – BLUE (VERY SCARCE AND DESIRABLE SET; WELL MATCHED)**
- ___96. **4 ½" - 5" DUGAN AMARYLLIS FTD. PLATE – AMYTH. (RARE SHAPE; HAS A GOLDISH / SILVERY FINISH)**
- ___97. Dugan S-Repeat Punch Cup Whimsey – Purp. (scarce; nice)
- ___98. Dugan S-Repeat Punch Top and (6) Punch Cups – Crystal Amyth. (very unusual set; where's the base?)

- ___ 99. Base to Stork in the Rushes Punch Base (or Springtime Vase) – Mari. (scarce part)
- ___ 100. **7 3/8" TALL DUGAN HANGING CHERRIES TRI-CORNERED VASE – PURP. (EXTREMELY RARE ONE OF A KIND ITEM; SATINY WITH YELLOWS AND REDS; NEVER CONCEIVED THIS ITEM EXISTED)**
- ___ 101. **7 1/4" TALL DUGAN CIRCLE SCROLLS SWUNG VASE – PURP. (SCARCE AND VERY DESIRABLE; SUPER IRID.)**
- ___ 102. **7 1/2" TALL DUGAN FORMAL HATPIN HOLDER – PURP. (RARE AND DESIRABLE ITEM; NICE COLOR)**
- ___ 103. **7" TALL DUGAN FORMAL J.I.P. VASE – PURP. (VERY SCARCE ITEM; TOUGH TO FIND)**
- ___ 104. 11" Tall Dugan Target Swung Vase – Purp. (really nice color)
- ___ 105. **4 1/2" TALL DUGAN BEAUTY BUD VASE WITH ODD TRI-CORNERED TOP – PURP. (VERY SCARCE; ODD RUFFLE WITH A SATINY FINISH)**
- ___ 106. **5 1/4" TALL DUGAN WOODLANDS VASE – MARI. (SCARCE AND DESIRABLE PATTERN; TOUGH TO FIND)**
- ___ 107. (1) Dugan Beaded Shell Mug and (1) Dugan Fishermans Mug – Purp. (selling 2 for 1)
- ___ 108. (1) Dugan Cherry Wreath Tumbler and (1) Dugan Vintage Grape Stemmed Wine – Purp. (selling 2 for 1)
- ___ 109. Dugan Fan 4 ftd. Handled Gravy Boat – Purp. (very scarce with bright highlights)
- ___ 110. **DUGAN GOD AND HOME 7 PC. WATER SET – BLUE (EXTREMELY RARE AND VERY DESIRABLE SET; VERY TOUGH TO FIND)**
- ___ 111. Dugan Heavy Iris Tumbler – Pastel Mari. (super irid.)
- ___ 112. Dugan Harvest Flower Tumbler – Mari. (scarce item)
- ___ 113. (1) Dugan Peacock at the Fountain Tumbler and (1) Dugan Stork in the Rushes Mug – Mari. (selling 2 for 1)
- ___ 114. (1) Dugan Waterlily and Cattail, (1) Dugan Vineyard and (1) Grapevine Lattice Tumblers – Mari. (selling 3 for 1)
- ___ 115. **DUGAN BROOKLYN BRIDGE 6 RUFFLED BOWL – MARI. (RARE AND ALWAYS DESIRABLE; SUPER RADIUM FINISH)**
- ___ 116. **3 1/2" TALL X 6 1/2" FLARED DUGAN BIG BASKETWEAVE SQUATTY FLARED VASE – WHITE (VERY RARE AND DESIRABLE SHAPE; FROSTY AND SUPER)**
- ___ 117. Dugan Constellation Stemmed 6 Ruffled Compote – White (very scarce with frosty finish)
- ___ 118. 9" Dugan Fanciful Flared Plate – White (very scarce; nice irid.)
- ___ 119. Dugan Cherry Wreath 7 pc. Oval Ruffled Berry Set – White / Gold (very scarce set; decorated and well matched)
- ___ 120. **8 1/2" DUGAN DOUBLE STEM ROSE DOMED 10 RUFFLED BOWL – CELESTE BLUE (RARE AND DESIRABLE; GREAT COLOR; HAS 2 FLAKES ON ONE RUFFLE)**
- ___ 121. **DUGAN G & C STIPPLED BANDED FTD. BANANA BOAT – DK. MARI. (SCARCE VARIATION; SUPER COLOR AND IRID.)**
- ___ 122. 7 3/8" Tall Dugan Mushroom Shaped Vase – Venetian Line – P. Opal. (great irid.; odd Carnival finish)
- ___ 123. 4 3/4" Tall Dugan Thin Rib Squatty Flared Vase – P. Opal. (nice size and opal.)
- ___ 124. Dugan Daisy and Lattice 7 pc. Tankard Water Set – Mari. (scarce set)
- ___ 125. 8 5/8" (Maker ?) Vintage Grape 6 Ruffled Bowl with C.R.E. – Mari. (scarce; has a radium finish)
- ___ 126. 5" Tall x 6 1/2" Wide Sowerby Pineapple Stemmed 6 Ruffled Compote – Amyth. (scarce color)
- ___ 127. 6 1/2" Long x 4 1/4" Wide European Pinwheel or Whirling Hobstar Oval Bowl – Mari. (great color)
- ___ 128. Dugan Maple Leaf 5 pc. Water Set – Purp. / Amyth. (2 tumblers are Horehound; nice color)
- ___ 129. Dugan Maple Leaf 6 pc. Table Set – Blue (very scarce; no spooner; covered sugar – Contemporary)
- ___ 130. **DUGAN G & C PERFUME BOTTLE AND STOPPER – PURP. (VERY DESIRABLE; TOUGH TO FIND; NICE)**
- ___ 131. **DUGAN G & C PERFUME BOTTLE AND STOPPER – LT. MARI. (SCARCE; LIGHT IN COLOR; TOUGH TO FIND)**
- ___ 132. Dugan Floral and Grape 6 pc. Bulbous Water Set – Amyth. (scarce; attractive set)
- ___ 133. Dugan Dahlia ftd. Creamer – Purp. (tough part to find)
- ___ 134. (2) Dugan Windflower Handled Gravy Boats – (1) Mari., (1) Amyth. (Amyth. example is damaged)
- ___ 135. **DUGAN VINTAGE GRAPE COVERED POWDER JAR – PURP. (ABSOLUTELY FANTASTIC EXAMPLE; SUPER IRID. – WOW!)**
- ___ 136. Dugan Vintage Grape Covered Powder Jar – Mari.
- ___ 137. Dugan Grape Delight 6 ftd. Nut Bowl – Mari.
- ___ 138. Dugan Leaf Ray Handled Nappy – P. Opal.
- ___ 139. 10 1/2" Dugan Petal and Fan Lg. 6 Ruffled Bowl with J.H. Ext. – P. Opal. (satiny finish)
- ___ 140. **DUGAN MANY FRUITS 7 PC. ROUND PUNCH SET – PURP. (RARE AND VERY DESIRABLE; NICE MULTI-COLORED IRID.)**
- ___ 141. Dugan Many Fruits 9 pc. Round Punch Set – Mari. (chip on inside of bowl)
- ___ 142. 8 7/8" Dugan Paneled Cherries 3 ftd. 6 Ruffled Bowl – P. Opal. (light color)
- ___ 143. Dugan Apple and Pear Lg. Oval Ruffled Fruit Bowl – Mari.
- ___ 144. Dugan Cherry Wreath ind. Oval Ruffled Berry Bowl – Lt. Amyth. / Mari. (odd base color)
- ___ 145. Dugan Cherry Wreath Lg. Oval Ruffled Master Berry Bowl – P. Opal. (spotty irid.)
- ___ 146. Dugan Cherry Wreath Lg. Oval Ruffled Master Berry Bowl – White with Decor. (nice color and irid.)
- ___ 147. Dugan Cherry Wreath Lg. Oval Ruffled Master Berry Bowl – Purp. (radium finish)
- ___ 148. Dugan Cherry Wreath Lg. Oval Ruffled Master Berry Bowl – Mari.
- ___ 149. (2) Dugan Cherry Wreath ind. Oval Ruffled Berry Bowls – Mari. (selling 2 for 1)
- ___ 150. **DUGAN CHERRY WREATH 6 PC. WATER SET – DK. MARI. (ACTUALLY QUITE A RARE SET; DARK COLOR WITH GREAT IRID.)**

- ___ 151. **DUGAN CHERRY WREATH 6 PC. TABLE SET – DK. MARI. (RARE SET; COMPLETE WITH EXCELLENT COLOR AND IRID.)**
- ___ 152. Dugan Rambler Rose 7 pc. Bulbous Water Set – Mari. (scarce set)
- ___ 153. **DUGAN RAMBLER ROSE 6 PC. BULBOUS WATER SET – BLUE (RARE COLOR; VERY DESIRABLE)**
- ___ 154. Imperial Grape Tumbler – Helios Green
- ___ 155. Imperial Grape 6 pc. Wine Set – Purp. (rare and very desirable; super color and irid.)
- ___ 156. (1) Imperial Grape Cup – Green and (1) Imperial Diamond and Sunburst Wine – Amyth. (selling 2 for 1)
- ___ 157. (1) Imperial Crab Claw Tumbler and (1) Imperial Fieldflower Tumbler – Mari. (selling 2 for 1)
- ___ 158. **IMPERIAL OCTAGON TOOTHPICK HOLDER – DK. MARI. (MOST LIKELY AN OLD EXAMPLE; GREAT COLOR)**
- ___ 159. (2) Imperial Flute Toothpick Holders – (1) Purp., (1) Mari. (Purple example has roughness; selling 2 for 1)
- ___ 160. **IMPERIAL COLONIAL LADY 4 RUFFLED VASE – PURP. (RARE AND DESIRABLE; PERFECT WITH GOLD HIGHLIGHTS)**
- ___ 161. **IMPERIAL THUMBPRINT AND OVALS VASE – DK. MARI. (EXCELLENT EXAMPLE; DARK COLOR; ATTRACTIVE)**
- ___ 162. **3" TALL X 4" WIDE IMPERIAL EMBOSSED SCROLL MINIATURE 6 RUFFLED COMPOTE – PURP. (SUPER COLOR AND IRID.; GREAT EXAMPLE)**
- ___ 163. **IMPERIAL CORN BOTTLE – HELIOS GREEN (VERY SCARCE AND DESIRABLE NOVELTY)**
- ___ 164. Imperial Little Barrel Perfume – Dk. Mari. (scarce; super color and irid.)
- ___ 165. **IMPERIAL LOGANBERRY VASE – AMBER (RARE AND DESIRABLE BASE COLOR; TOUGH)**
- ___ 166. 8 7/8" Imperial Open Rose Flat Plate – Amber (scarce; nice dark example)
- ___ 167. 8 3/4" Tall Imperial Bullseye and Beads Swung Vase – Mari. (nice shape)
- ___ 168. 7 1/2" Tall Imperial Ribbed J.I.P. Vase – Dk. Mari. (nice color)
- ___ 169. Imperial Rococo domed 6 Ruffled Vase – Lt. Mari.
- ___ 170. 11 5/8" Tall x 3 3/8" Base Imperial Ripple Swung Vase – Helios Olive Green (odd base color)
- ___ 171. 5 1/4" Tall x 4 5/8" Wide Imperial Miniature Morning Glory and Drape Vase – Dk. Mari. (attractive item)
- ___ 172. (1) 6 1/4" Tall and (1) 6 1/2" Tall Imperial Miniature Morning Glory Swung Vases – Dk. Mari. (selling 2 for 1)
- ___ 173. 4 1/2" Tall x 2 1/2" Base Imperial Ripple Squatty Swung Mini Vase – Mari. (neat, small item; nice example)
- ___ 174. 4 3/4" Tall Imperial Tulip and Cane Stemmed Claret and an Imperial Wide Panel Handled Mug – Mari. (scarce; selling 2 for 1)
- ___ 175. **8 1/4" TALL X 4 3/4" BASE IMPERIAL ZIPPER LOOP KEROSENE LAMP – MARI. (VERY SCARCE; NICE COLOR AND IRID.)**
- ___ 176. Imperial Diamond Lace Handled Water Pitcher – Purp. (very scarce; nice color and irid.)
- ___ 177. (3) Imperial Diamond Lace Tumblers – Purp. (selling all three for one money)
- ___ 178. Imperial Waffle Block Handled Flower Basket – Teal (scarce color)
- ___ 179. Imperial Daisy Handled Flower Basket – Clamb.
- ___ 180. **8 3/4" IMPERIAL STRETCH FLORAL AND OPTIC 3 FTD. ROUND FLARED BOWL – RED (RARE AND VERY DESIRABLE; SUPER COLOR AND IRID.)**
- ___ 181. 4" Tall Imperial File 9 Ruffled Whimsey Vase – Mari. (rare and unusual item; tough to find)
- ___ 182. 12 1/2" Tall x 3 3/8" Base Imperial Ripple Swung Vase – Honey Amber (super attractive color and irid.; nice)
- ___ 183. 7 1/2" Tall x 3 3/8" Base Imperial Ripple Squatty Swung Vase – Amber (great color; nice and dark)
- ___ 184. 12 1/4" Tall x 3 3/8" Base Imperial Ripple Swung Vase – Helios Green
- ___ 185. **IMPERIAL GRAPE WATER CARAFE – GREEN (ACTUALLY QUITE A NICE EXAMPLE; NICE)**
- ___ 186. Pr. 8 1/2" Tall Imperial Premium Candlesticks with Swirl Base – Smoke (scarce pair; well matched)
- ___ 187. Imperial Flute Breakfast Sugar and Creamer – Purp. (nice pair; great irid.)
- ___ 188. Pr. Imperial Ribbed Light Shades – Mari. (selling pair for 1 money)
- ___ 189. Imperial Grape 5 pc. Water Set – Mari. (nice color and irid.)
- ___ 190. Imperial 474 8 pc. Punch Set – Dk. Mari. (nice, well matched set)
- ___ 191. Imperial Waffle Block 8 pc. Punch Set – Clamb. (scarce set; some of the cups are darker)
- ___ 192. Imperial Fieldflower 5 pc. Water Set – Dk. Mari. (nice color; well matched set)
- ___ 193. Imperial Hobstar Band Water Pitcher – Mari. (scarce)
- ___ 194. Westmoreland Orange Peel 11 pc. Punch Set – Mari. (really nice set; well matched)
- ___ 195. **10 1/2" DUGAN SKI STAR LG. 8 RUFFLED SQUARE BOWL – PURP. (SUPER, SUPER EXAMPLE; GREAT IRID. AND COLOR; NICE!!)**
- ___ 196. Circle Delight Hatpin – Dark Green Irid. (scarce; nice)
- ___ 197. "Flower in Clover" Hatpin – Dark (very scarce; really nice)
- ___ 198. Two Flowers Hatpin – Dark (scarce; nice)
- ___ 199. "Whirligig" Hatpin – Dark (really nice; scarce)
- ___ 200. **"WHITE ROSE" HATPIN – CLEAR IRID. (UNUSUAL ITEM WITH PASTEL HIGHLIGHTS)**
- ___ 201. "Dots and Panels" Hatpin – Dark (scarce; nice)
- ___ 202. Star Center Hatpin – Dark (scarce; nice)
- ___ 203. Basketflower (or Sunflower Basket) Hatpin – Dark (scarce)
- ___ 204. Veiling Hatpin – Dark (very scarce; nice)
- ___ 205. Jute Braid Hatpin – Dark (very scarce; nice)
- ___ 206. Turban Hatpin – Dark (scarce; nice)
- ___ 207. Throw Pillow Hatpin – Dark (scarce; nice)
- ___ 208. Moire Beetle (Taffeta) Hatpin – Dark (nice)
- ___ 209. Coolie Hat Hatpin – Dark (nice)
- ___ 210. Hollow Dart Hatpin – Dark (nice)
- ___ 211. "Two Sunflowers" Hatpin – Dark (scarce)
- ___ 212. Triad Hatpin – Dark (silvery)
- ___ 213. N Dandelion Handled Mug – Purp. (scarce; nice color)

- ___214. N Drapery Rose Bowl – Purp. (scarce; nice irid.)
- ___215. **N WIDE PANEL 4 LILY EPERGNE – GREEN (VERY DESIRABLE; A VERY ATTRACTIVE EXAMPLE)**
- ___216. N Beaded Cable ftd. Ruffled Rose Bowl – Aqua Opal. (scarce; desirable – average example)
- ___217. N Beaded Cable ftd. Ruffled Rose Bowl – Dk. Mari. (nice color)
- ___218. N Beaded Cable ftd. Ruffled Rose Bowl with Ribbed Int. – Amyth. (silvery finish)
- ___219. N Singing Bird Handled Mug – Green (nice example)
- ___220. **N SINGING BIRD 7 PC. WATER SET – GREEN (VERY SCARCE AND DESIRABLE SET)**
- ___221. N Singing Bird Tumbler – Green (nice color)
- ___222. N Grape and Gothic Arches Tumbler – Green (nice color)
- ___223. N Dandelion Tumbler – Green (nice example)
- ___224. 7 ½" N Tree Trunk Squatty Swung Vase – Green
- ___225. **N RASPBERRY 7 PC. WATER SET – GREEN (DESIRABLE; WELL MATCHED SET)**
- ___226. **N HARVEST POPPY STEMMED 6 RUFFLED COMPOTE – GREEN (VERY RARE PATTERN IN THIS COLOR; HAVEN'T SOLD MANY)**
- ___227. N Daisy and Plume / Fern Interior Stemmed 6 Ruffled Compote – Green (scarce; really nice example)
- ___228. **N CORN VASE WITH STALK BASE VASE – ICE GREEN (VERY SCARCE; NICE PASTEL FINISH)**
- ___229. N G & C Handled Punch Cup – Lime Ice Green (scarce; desirable color)
- ___230. **N TORNADO LG. SIZE TRI-CORNERED VASE – GREEN (RARE AND DESIRABLE; VERY NICE COLOR AND IRID.)**
- ___231. **N WISHBONE SINGLE LILY EPERGNE – GREEN (VERY SCARCE AND VERY DESIRABLE; NICE ITEM)**
- ___232. 10 ¾" Tall N Feather Stitch Swung Vase – Green
- ___233. N G & C Cologne Bottle and Stopper – Green (scarce color; nice)
- ___234. N G & C Cologne Bottle and Stopper – Amyth. (scarce; satiny finish – odd)
- ___235. **DUGAN (N) G & C PERFUME BOTTLE AND STOPPER – PURP. (VERY RARE; SUPER EXAMPLE; GREAT IRID.)**
- ___236. N G & C ftd. Hatpin Holder – Green (very scarce; nice satiny finish)
- ___237. N G & C ftd. Hatpin Holder – Amyth. (scarce; nice irid.)
- ___238. N G & C Small size Oval Pin Tray – Amyth. (very scarce item; tough to find)
- ___239. N G & C Handled Bon Bon with Basketweave Ext. – Elec. Blue (super color with super irid.)
- ___240. **N IVY TOWN PUMP – GREEN (EXTREMELY RARE ITEM; GREAT COLOR WITH A NICE SATINY FINISH)**
- ___241. **N IVY TOWN PUMP – PURP. (RARE AND VERY DESIRABLE; REALLY NICE EXAMPLE)**
- ___242. 9" Tall N Drapery Variant Swung Vase – Amyth. (very scarce base color; nice)
- ___243. 9" Tall N Drapery Variant Swung Vase – Blue (very scarce; small chip under base)
- ___244. **N DAISY AND DRAPE FTD. FLARED VASE – AQUA OPAL. (VERY DESIRABLE; NICE COLOR AND OPAL.)**
- ___245. **N ROSE SHOW FLARED PLATE – BLUE (REALLY NICE DARK EXAMPLE; GREAT COLOR)**
- ___246. **N ROSE SHOW FLARED PLATE – DK. MARI. (VERY SCARCE WITH EXCELLENT DARK COLOR AND IRID.)**
- ___247. **N ROSE SHOW VARIANT 8 RUFFLED BOWL WITH RIBBED EXT. – BLUE (VERY SCARCE; HAS A MANUF. FLAW ON EDGE)**
- ___248. **N POPPY SHOW 8 RUFFLED BOWL – PURP. (VERY SCARCE AND DESIRABLE ITEM; NICE)**
- ___249. N Poppy Show 8 Ruffled Bowl – White (scarce and desirable; frosty with gold highlights)
- ___250. **N ACORN BURR 7 PC. WATER SET – MARI. (VERY SCARCE SET; SORTA PASTEL MARI.)**
- ___251. N Grape and Gothic Arches Tumbler – Pearlized Custard (scarce; nice finish)
- ___252. (2) N Grape and Gothic Arches Tumblers – Mari. (selling 2 for 1)
- ___253. N Peach Tumbler – Blue (scarce item)
- ___254. (4) N Peach Tumblers – White (very scarce; selling for 1 money)
- ___255. **N GRAPE ARBOR TUMBLER – ICE BLUE (VERY SCARCE AND VERY DESIRABLE)**
- ___256. N Oriental Poppy Tumbler – Amyth. (scarce)
- ___257. N Singing Bird Handled Mug – Amyth. (scarce; really nice)
- ___258. **N FINE CUT AND ROSES FTD. 6 RUFFLED CANDY DISH WITH FANCY INT. – AQUA OPAL. (RARE AND DESIRABLE PASTEL ITEM; PERFECT WITH GREAT COLOR)**
- ___259. N Fine Cut and Roses ftd. Ruffled Rose Bowl – Amyth. (excellent example; pinhead on one foot)
- ___260. **N HEARTS AND FLOWERS FLARED PLATE WITH RIBBED EXT. – MARI. (RARE AND VERY DESIRABLE; SORTA PASTEL MARI.)**
- ___261. N Hearts and Flowers low 8 Ruffled Bowl with Ribbed Ext. – Ice Blue (very scarce; nice example)
- ___262. N Hearts and Flowers 8 Ruffled Bowl with Ribbed Ext. – White (scarce; nice example)
- ___263. **N HEARTS AND FLOWERS STEMMED 6 RUFFLED COMPOTE WITH RIBBED EXT. – AQUA OPAL. (RARE AND ALWAYS DESIRABLE; NICE OPAL.)**
- ___264. N Hearts and Flowers Bowl with P.C.E. and Ribbed Ext. – Lime Ice Green (super color; very desirable; has a check in the base)
- ___265. **N PEACOCK AT THE FOUNTAIN WATER PITCHER – BLUE (VERY SCARCE; NICE COLOR)**
- ___266. N Peacock at the Fountain Lg. Master Berry Bowl – Purp. (super color with super irid.; nice!!)
- ___267. N Peacock at the Urn ind. Ice Cream Bowl – Amyth. (scarce)
- ___268. N Memphis Handled Punch Cup – Purp.
- ___269. **N GRAPE ARBOR 6 RUFFLED HAT FROM TUMBLER – BLUE (PRETTY NICE EXAMPLE; NICE BLUE HIGHLIGHTS)**

270. **N LATTICE AND POINSETTIA FTD. 8 RUFFLED BOWL WITH RIBBED EXT. – ELEC. BLUE (RARE AND VERY DESIRABLE; HAS BRIGHT BLUE HIGHLIGHTS AND SHARP POINT)**
271. N Drapery Tri-Cornered Candy Dish – Ice Blue (scarce; nice pastel)
272. 13" Tall N Thin Rib Mid-size Swung Vase – Purp. (silvery irid.)
273. 10 ½" Tall N Thin Rib Standard size Swung Vase – Russet Green (nice base color)
274. 10 3/8" Tall N Thin Rib Standard size Swung Vase – Ice Blue (scarce; nice pastel with light irid.)
275. **13 ¾" TALL X 4 5/8" BASE N TREE TRUNK MID-SIZE SWUNG VASE – PURP. (HAS TO BE ONE OF THE VERY BEST PURPLE MID-SIZE VASES THAT I'VE EVER SEEN!)**
276. **11" TALL X 4 ¾" BASE N TREE TRUNK MID-SIZE SWUNG VASE – WHITE (GREAT SIZE, GREAT IRID. – VERY RARE; HAS A ½" DIVOT INSIDE OPENING)**
277. **N BLOSSOMTIME STEMMED 6 RUFFLED COMPOTE – PURP. (VERY DESIRABLE WITH SUPER IRID.)**
278. N Butterfly Handled Bon Bon with Spiral Ext. – Mari. (very scarce but has a chip on the base)
279. N Butterfly Handled Bon Bon with Plain Ext. – Green (nice color)
280. **N ROUND HANDLED BUSHEL BASKET – AQUA OPAL. (SCARCE WITH A MARI. OVERLAY)**
281. N Round Handled Bushel Basket – Horehound (very scarce base color; excellent color)
282. N Round Handled Bushel Basket – Purp. (nice irid. and color)
283. N Round Handled Bushel Basket – Blue (scarce)
284. N Eight sided Handled Bushel Basket – White (scarce; frosty)
285. **N WISHBONE HANDLED WATER PITCHER – PURP. (RARE AND DESIRABLE; ROUGH ON EDGE AND HAS A CHECK IN THE HANDLE)**
286. N Embroidered Mums 8 Ruffled Bowl with Ribbed Ext. – Blue (scarce color; always desirable)
287. **N GOOD LUCK FLARED PLATE WITH BASKETWEAVE EXT. – PURP. (VERY SCARCE WITH REALLY NICE COLOR AND IRID.)**
288. **N GOOD LUCK 8 RUFFLED BOWL WITH RIBBED EXT. – LT. AMYTH. (SUPER EXAMPLE WITH GREAT BASE COLOR)**
289. N Good Luck Stippled 8 Ruffled Bowl with Ribbed Ext. – Blue (very scarce with a reddish / bronze finish)
290. **N THREE FRUITS STIPPLED PLATE WITH RIBBED EXT. – DK. MARI. (ABSOLUTELY SUPER PUMPKIN IN COLOR; ONE OF THE BEST!!)**
291. N Three Fruits Stippled Plate with Ribbed Ext. – Purp. (very scarce with a nice goldish finish)
292. **N THREE FRUITS MEDALLION STIPPLED 3 FTD 8 RUFFLED BOWL WITH MEANDER EXT. – AQUA OPAL. (VERY DESIRABLE; PASTEL WITH A PLAIN EDGE – REALLY NICE)**
293. 7 ¾" N Fruits and Flowers Flat Plate with Basketweave Ext. – Dk. Mari. (very scarce; nice)
294. **N NIPPON BOWL WITH P.C.E. AND RIBBED EXT. – ICE BLUE (VERY DESIRABLE; NICE COLOR AND IRID.)**
295. **N PEACOCKS PLATE WITH RIBBED EXT. – PURP. (EXCELLENT EXAMPLE WITH A NICE DARK FINISH)**
296. **N PEACOCKS PLATE WITH RIBBED EXT. – PASTEL MARI. (SCARCE; NICE COLOR AND IRID.)**
297. **N PEACOCKS PLATE WITH PLAIN EXT. – ICE GREEN (SUPER EXAMPLE; GREAT IRID.; NICE)**
298. N G & C Sweetmeat Whimsey Compote – Purp. (scarce; tough item)
299. N G & C Covered Sweetmeat Compote – Purp. (scarce; nice)
300. **N G & C COVERED TOBACCO HUMIDOR – MARI. (VERY SCARCE; NICE DARK EXAMPLE; PRONGS ARE GOOD)**
301. N G & C Shot Glass – Mari. (very scarce; nice)
302. **N G & C SHOT GLASS – PURP. (VERY SCARCE; NICE)**
303. N G & C Pin Nappy from Punch Cup – Purp. (scarce item)
304. N G & C Breakfast Sugar and Creamer – Purp. (scarce pair; nice color)
305. N G & C ftd. Hatpin Holder – Green (scarce; nice color)
306. N Good Luck Bowl with P.C.E. and Basketweave Ext. – Amyth. (scarce with a satiny finish)
307. N Good Luck Bowl with P.C.E. and Ribbed Ext. – Dk. Mari. (scarce; nice color)
308. **9" N THREE FRUITS FLARED PLATE WITH BASKETWEAVE EXT. – GREEN (ACTUALLY QUITE A NICE EXAMPLE)**
309. N Round Handled Bushel Basket – Ice Green (scarce; nice color)
310. **N EMBROIDERED MUMS 8 RUFFLED BOWL WITH RIBBED EXT. – BLUE (REALLY NICE EXAMPLE; NICE IRID.)**
311. **N CORN VASE WITH STALK BASE – ICE GREEN (SCARCE; NICE PASTEL ITEM)**
312. N Corn Vase with Stalk Base – White (scarce; nice and frosty)
313. 6 ½" Tall N Diamond Point Squatty Swung Vase – Lt. Amyth. (scarce; light base color)
314. **N DAISY AND DRAPE FTD. FLARED VASE – WHITE (RARE ITEM ESP. WITH THE FLARE; GREAT EXAMPLE)**
315. **7 ½" N DRAPERY SWUNG VASE – LT. ICE BLUE (SCARCE WITH A LIGHT BASE COLOR)**
316. **PAIR FENTON STRETCH #232 CANDLESTICKS – GRECIAN GOLD (VERY SCARCE PAIR WITH NICE COLOR)**
317. 8 ¼" Fenton Blackberry Bramble Bowl with 3 in 1 Edge – Mari. (scarce pattern)
318. 9 ¼" Fenton Orange Tree Flared Plate – Mari.

- ___ 319. Fenton Orange Tree ftd. Ruffled Fruit Bowl – Mari.
 ___ 320. Fenton Orange Tree Ruffled Punch Bowl, Base and (2)
 Cups – Blue (really nice color – well matched; nice)
 ___ 321. Fenton Bouquet 5 pc. Bulbous Water Set – Mari.
 (scarce set with nice color)
 ___ 322. **FENTON BUTTERFLY AND FERN 7 PC. WATER
 SET – BLUE (RARE AND DESIRABLE; VERY WELL
 MATCHED)**
 ___ 323. 14 ¾" Tall Fenton Rustic mid-size Swung Vase –
 Green (scarce; impressive size; nice color)
 ___ 324. **9 ½" FENTON LEAF CHAIN FLAT PLATE – WHITE
 (ABSOLUTELY SUPER BRIGHT IRID.; NICE)**
 ___ 325. **10 ¾" FENTON BIRDS AND CHERRIES CHOP
 PLATE – BLUE (EXTREMELY RARE AND VERY
 DESIRABLE; HAS FLASHY GOLDISH
 HIGHLIGHTS)**
 ___ 326. 7 ½" Fenton G & C 8 Ruffled Bowl – Lime Green /
 Vaseline (scarce base color)
 ___ 327. 9" Fenton Peacock and Grape 8 Ruffled Bowl -
 Powder Blue / Lt. Mari. (another odd Fenton base
 color)
 ___ 328. Fenton Persian Medallion Hair Receiver – Blue (really
 nice example)
 ___ 329. Fenton Garland 3 ftd. Rose Bowl – Blue
 ___ 330. **6 ¼" FENTON LOTUS AND POINSETTIA FTD. 6
 RUFFLED SAUCE – ICE GREEN OPAL. (VERY
 RARE AND VERY DESIRABLE; GREAT OPAL.
 AND OVERLAY)**
 ___ 331. **6" FENTON LOTUS AND POINSETTIA FTD. 6
 RUFFLED SAUCE – REVERSE AMBERINA OPAL.
 (ABSOLUTELY SUPER EXAMPLE; GREAT BASE
 COLOR; RARE)**
 ___ 332. **FENTON BLACKBERRY SPRAY CRIMPED EDGE
 J.I.P. HAT – RED (LOOKS ABOUT AS RED AS
 THESE GET)**
 ___ 333. Fenton Blackberry Spray 6 Ruffled Hat – Red (dark,
 silvery finish; super red)
 ___ 334. Fenton 2 Row Open Edge Basketweave J.I.P. Hat –
 Red (nice example; satiny)
 ___ 335. **9" FENTON HOLLY 8 RUFFLED BOWL – RED
 (RARE AND DESIRABLE; LOOKS RED AND NICE)**
 ___ 336. **8 ½" FENTON PEACOCK AND GRAPE 8 RUFFLED
 BOWL – RED SLAG (RARE AND DESIRABLE
 EXAMPLE; HAS SLAG EFFECT)**
 ___ 337. **7 ¼" FENTON LEAF CHAIN LOW 6 RUFFLED
 BOWL – RED (RARE AND DESIRABLE ITEM; NICE)**
 ___ 338. **6 ¼" FENTON SAILBOAT 6 RUFFLED SAUCE –
 RED / AMBERINA (ANOTHER NICE, ATTRACTIVE
 EXAMPLE; TOUGH ITEM)**
 ___ 339. **10 ½" FENTON FINE RIB STANDARD SWUNG
 VASE – RED (RED BASE COLOR IS REALLY NICE)**
 ___ 340. **8 ¼" FENTON DRAGON AND LOTUS I.C. SHAPED
 BOWL – RED / AMBERINA (RARE & DESIRABLE;
 NICE SATINY FINISH)**
 ___ 341. 8 ¾" Fenton Dragon and Lotus 8 Ruffled Bowl – Dk.
 Mari. (dark with super irid.)
 ___ 342. 9" Fenton Little Fishes Lg. 3 ftd. I.C. Shaped Bowl –
 Mari. (nice color and irid.)
 ___ 343. 6 5/8" Fenton Lions I.C. Shaped Bowl – Mari. (scarce)
 ___ 344. 7 5/8" Fenton Horsehead Medallion Flat Plate – Lt.
 Mari. (light color)
 ___ 345. **6 ¼" FENTON PINE CONE FLAT PLATE WITH
 WIDE PANEL EXT. – AMYTH. (SUPER, SUPER
 COLOR AND IRID. – REALLY NICE EXAMPLE)**
 ___ 346. **6 ¼" FENTON PINE CONE FLAT PLATE WITH
 PLAIN EXT. – GREEN (ANOTHER SCARCE ITEM
 WITH A NICE SATINY FINISH)**
 ___ 347. **6 3/8" FENTON PERSIAN MEDALLION FLAT
 PLATE – BLACK AMYTH. (RARE BASE COLOR;
 CAN'T SEE THROUGH IT)**
 ___ 348. 6 ½" Fenton Cherry Chain Flat Plate – Mari. (satiny
 finish)
 ___ 349. 7 ½" Fenton Vintage Grape Flat Plate – Blue (nice
 radium type finish)
 ___ 350. **9" FENTON DRAGON AND STRAWBERRY I.C.
 SHAPED BOWL – BLUE (RARE AND VERY
 DESIRABLE; GREAT COLOR AND DETAIL)**
 ___ 351. **9 3/8" FENTON HEART AND VINE FLAT PLATE –
 BLUE (RARE AND DESIRABLE; GREAT COLOR
 AND IRID.)**
 ___ 352. **9 3/8" FENTON CAPTIVE ROSE FLARED PLATE –
 BLUE (VERY SCARCE; NICE COLOR AND IRID.;
 NICE DETAIL)**
 ___ 353. 9 1/8" Fenton Ribbon Tie low Plate with 3 in 1 Edge –
 Blue (scarce and desirable; nice highlights)
 ___ 354. Fenton Horsehead Medallion ftd. J.I.P. Bowl –Blue
 (very scarce and very desirable)
 ___ 355. **9 ¼" FENTON ORANGE TREE WITH TRUNK FLAT
 PLATE – BLUE (SUPER EXAMPLE WITH A
 REDDISH IRID.; REALLY NICE)**
 ___ 356. 9 1/8" Fenton Plaid 8 Ruffled Bowl – Blue (very scarce
 and very desirable; nice)
 ___ 357. **10 ¾" FENTON STAG AND HOLLY LG. FTD. 8
 RUFFLED BOWL – BLUE (VERY SCARCE; SUPER
 COLOR AND IRID.; REALLY SOMETHING)**
 ___ 358. 7 7/8" Fenton Stag and Holly spatula ftd. 8 Ruffled
 Bowl – Mari. (satiny)
 ___ 359. 9 ¾" Fenton Holly Flat Plate – Dk. Mari. (great color
 and great irid.)
 ___ 360. **FENTON TEN MUMS 7 PC. TANKARD WATER SET
 – DK. MARI. (PROBABLY THE BEST PITCHER I'VE
 SEEN IN THIS PATTERN AND COLOR)**
 ___ 361. **FENTON FOOTED ORANGE TREE FTD. HATPIN
 HOLDER – DK. MARI. (WHAT AN ITEM!! GOTTA BE
 AS GOOD AS I'VE SEEN)**
 ___ 362. Fenton Orange Tree Covered Powder Jar – Mari. (nice
 color)
 ___ 363. Fenton Orange Tree Covered Powder Jar – Blue (nice
 color)
 ___ 364. Fenton Grape and Lattice 6 pc. Tankard Water Set –
 Mari. (nice color)
 ___ 365. **FENTON KITTENS HANDLED CUP – BLUE (VERY
 RARE ITEM; IRID. IS A BIT SILVERY)**
 ___ 366. **FENTON KITTENS CUP AND SAUCER – MARI.
 (SCARCE AND A NICE SET)**
 ___ 367. Fenton Kittens Cereal Bowl – Mari. (scarce; nice color)
 ___ 368. 2 7/8" Tall Fenton Kittens Ruffled Toothpick Holder –
 Mari. (scarce; nice)

- ___ 369. 2 ¼" Tall Fenton Kittens Ruffled Toothpick Holder – Mari. (scarce; nice)
- ___ 370. 4 ½" Fenton Kittens Saucer – Mari. (very scarce part – tough to find)
- ___ 371. Fenton Kittens 2 sided Banana Dish – Mari. (scarce; nice)
- ___ 372. **FENTON DAISY CUT HANDLED DINNER BELL – MARI. (VERY SCARCE; NICE)**
- ___ 373. Fenton Vintage Grape Small size Single Lily Epergne – Amyth. (very scarce with really nice irid.; tough)
- ___ 374. Fenton Vintage Grape Small size Single Lily Epergne – Mari. (very scarce; tough base color)
- ___ 375. **FENTON 3 ROW LG. SIZE OPEN EDGE 2 SIDED BASKET – ICE GREEN (VERY RARE AND VERY DESIRABLE; QUITE A RARE EXAMPLE)**
- ___ 376. Fenton Fluffy Peacock Tumbler – Green (scarce; silvery)
- ___ 377. Fenton Floral and Grape Tumbler – Blue (super example)
- ___ 378. Fenton Ground Cherries Tumbler – Blue (has bright red cherries)
- ___ 379. Fenton Footed Orange Tree Tumbler – Blue (scarce)
- ___ 380. **FENTON BUTTERFLY AND BERRY 7 PC. WATER SET – BLUE (RARE AND DESIRABLE SET; REALLY NICE)**
- ___ 381. Fenton Butterfly and Berry Tumbler – Blue
- ___ 382. Fenton Fentonia Tumbler – Blue (scarce)
- ___ 383. (1) Fenton Apple Tree Tumbler and (1) Orange Tree Orchard Tumbler – Mari. (selling 2 for 1)
- ___ 384. (1) Fenton Orange Tree Punch Cup – White and (1) Fenton Wreath of Roses / Vintage Cup – Blue (selling 2 for 1)
- ___ 385. **FENTON WREATH OF ROSES PUNCH BOWL, BASE AND (2) CUPS WITH VINTAGE INT. – GREEN (SCARCE AND WELL MATCHED SET; NICE)**
- ___ 386. (4) Fenton Wreath of Roses Punch Cups with Vintage Int. – Amyth. (selling as a set; nice)
- ___ 387. (2) Fenton Miniature Blackberry Compotes – (1) Green and (1) Blue (selling both for one money)
- ___ 388. (1) 9 ½" Tall Fenton Rustic Swung Vase – Blue and (1) 8 ¼" Tall Fenton Long Thumbprint Vase – Green (selling 2 for 1)
- ___ 389. (1) 11 ¾" Tall Fenton April Showers Vase and (1) 10 ½" Tall Fenton Diamond Rib Vase – Amyth. (selling 2 for 1)
- ___ 390. **18" TALL X 5 1/8" BASE FENTON RUSTIC SWUNG FUNERAL VASE – DK. MARI. (RARE AND DESIRABLE; PRETTY NICE DARK EXAMPLE)**
- ___ 390A. **18 1/2" TALL X 5 1/4" BASE FENTON RUSTIC SWUNG FUNERAL VASE—CRYSTAL (VERY RARE, NEVER SOLD ONE BEFORE)**
- ___ 391. 15 ¾" Tall Fenton Rustic mid-size Swung Vase – Green (super example; great color and irid.)
- ___ 392. 9 ¾" Tall Fenton Rustic Standard Swung Vase – White (scarce)
- ___ 393. (1) 7 ¾" Tall Fenton Butterfly and Berry Swung Vase and (1) 9 1/8" Tall Fenton Knotted Beads Swung Vase – Mari. (selling 2 for 1)
- ___ 394. 5 ½" Tall Fenton Ribbed ftd. J.I.P. Vase – Pastel Mari. (nice pastel finish)
- ___ 395. **FENTON BUTTERFLY AND FERN 7 PC. BULBOUS WATER SET – MARI. (VERY SCARCE SET; WELL MATCHED)**
- ___ 396. Fenton Strawberry 4 sided 2 Handled Bon Bon – Blue (nice color)
- ___ 397. Fenton Pond Lily 4 sided 2 Handled Bon Bon – Amyth. (very scarce color for this pattern)
- ___ 398. Fenton Butterflies 2 sided Handled Card Tray – Blue (nice color)
- ___ 399. (1) Fenton Illusion 2 sided Handled Card Tray and (1) Fenton Lotus and Poinsettia ftd. Ruffled Sauce – Mari. (selling 2 for 1)
- ___ 400. **FENTON paneled DANDELION 6 PC. TANKARD WATER SET – GREEN (RARE AND DESIRABLE SET; NICE COLOR – WELL MATCHED)**
- ___ 401. **9 3/8" FENTON PEACOCK AT THE URN PLATE – BLUE (VERY SCARCE; NICE COLOR AND DETAIL)**
- ___ 402. **9 3/8" FENTON PEACOCK AT THE URN PLATE – DK. MARI. (SCARCE; NICE DARK EXAMPLE)**
- ___ 403. 9 ¼" Fenton Peacock at the Urn Plate – Lt. Mari. (scarce; light in color and irid.)
- ___ 404. 9" Fenton Peacock at the Urn 8 Ruffled Bowl – Green (very scarce base color with a satiny finish)
- ___ 405. 9" Fenton Peacock at the Urn 6 Ruffled Bowl – White (scarce with super irid.)
- ___ 406. 9" Fenton Leaf Chain 6 Ruffled Bowl – Mari.
- ___ 407. Fenton Sailboats Stemmed Wine Glass – Mari.
- ___ 408. (Maker ?) Bud Vase in Metal Base – Mari.
- ___ 409. Fenton O.T. Handled Mug and N Wide Panel Sherbet – Mari. (selling 2 for 1)
- ___ 410. Maybe Somethin!!!

DONALD DORAIS
150 HIGHLAND AVENUE
CUMBERLAND, RI 02864

PROVIDENCE, RI 02909
16 SEP 2014 1PM-4 L

BURNS

AUCTION SERVICE



Visit www.necga.com for pictures and brochure, Click on carnival glass links page, Look for Burns Auction. AUCTION FLEX AVAILABLE FOR THIS AUCTION.



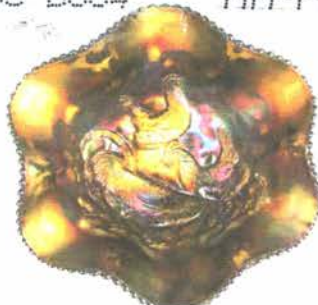
Lot# 331

LEE MARKLEY
BOX 306
MENTONE, IN 46539

CARNIVAL GLASS AUCTION SATURDAY, OCT. 25th AT 9:30 A.M.



Lot# 35



Lot# 75



Lot# 36



Lot# 246



Lot# 195



Lot# 290



Lot# 335



Lot# 245



Lot# 340