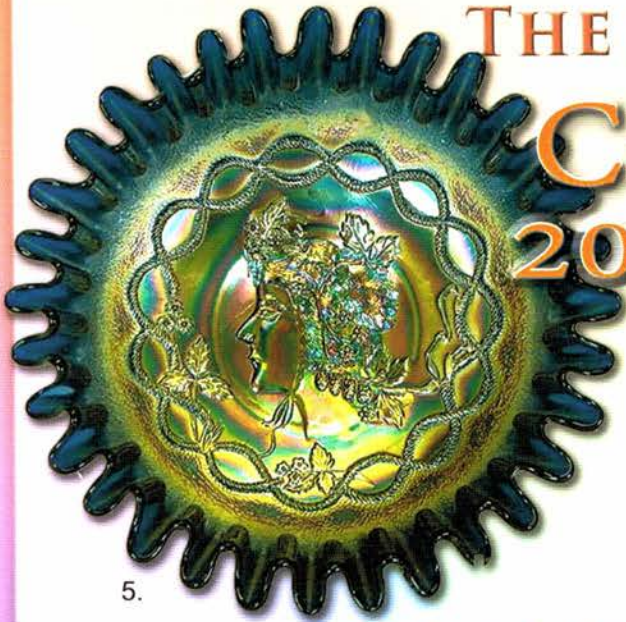


THE POUCHER COLLECTION

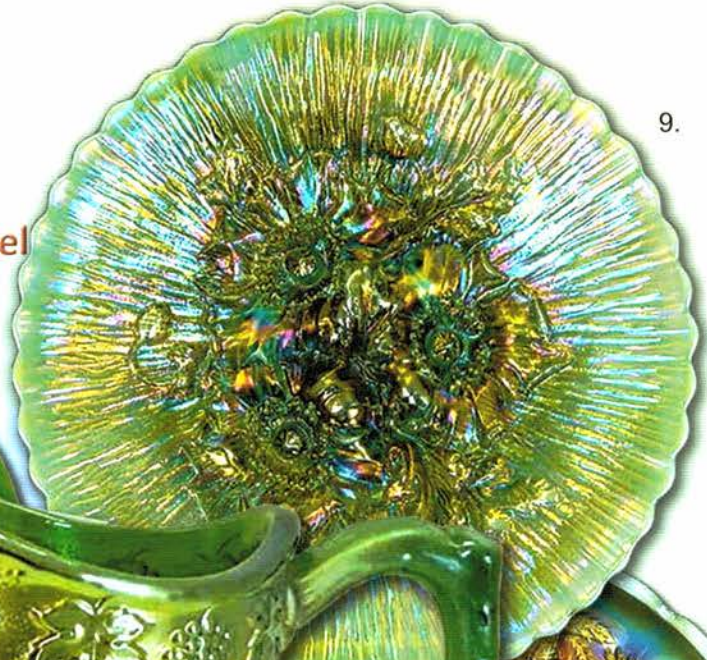
Carnival Glass 2014 AUCTION

Saturday,
September 13, 9:30 a.m.



5.

Embassy Suites
International Airport Hotel
Kansas City, Missouri



9.



41.



30.

44.



19.

JIM & JAN SEECK

Seeck Auctions

641-424-1116

To view the complete auction, check our website at: www.seeckauction.com

JIM & JAN SEECK

CARNIVAL GLASS AUCTION

641-424-1116

Saturday, September 13, 2014 — 9:30 AM
THE POUCHER COLLECTION

Embassy Suites Hotel—International Airport
7640 NW Tiffany Springs Parkway
Kansas City, Missouri 64153

NO BUYER'S PREMIUM — OPEN TO THE PUBLIC

ABSENTEE BIDDING is available on-line through Auction Flex
using our online catalog at www.seeckauction.com

★ *Absentee bidding closes Fri., Sept. 12 at 9 p.m. CST*

Previews begin at 4:30 p.m. Fri., Sept. 12, and at 7:30 a.m. Sat., Sept. 13 before the auction.

Please email us and we will put you on our email mailing list for auction notices.

e-mail: jimjan@seeckauction.com

LODGING: Hotel reservations can be made by calling the hotel directly at 816-891-7788. Ask for reservations and mention this code for a special rate: **Group Code HCG**. If you have a problem or questions about reservations, please give us a call.

Terms: Cash or Check, VISA, MasterCard & Discover accepted w/proper ID. 4% Clerking Fee on all purchases made using credit cards. Announcements made day of sale take precedence over any printed information.

We have 3 options for absentee bidding for our live auctions:

- 1) If you **DO NOT** have internet access, you can: Call us by phone to enter your bids at (641)424-1116 **OR** by sending the numbers of the item(s) desired and the amount bid on each to: Seeck Auctions, PO Box 377, Mason City, Iowa 50402. We would prefer you call us with your bids rather than send them in a letter.) We will enter your bids into our online bidding system.
 - ★ Have all written bids in by **Wed., Sept. 10.**
- 2) Enter your bids from our website into our online catalog through the Auction Flex system.
 - ◆ **First-time bidders:** Set up your account by creating a user name and password and filling out basic information. You will also need to **register for the auction** which will ask you to enter a valid credit card number. This card will be validated by a one time only charge of \$1 charge to your card. **You will use this user name and password for all our auctions.**
 - ◆ You are not required to pay by credit card if you are successful with your online bid. We will let you know what you owe us through an email and you can decide how you would like to pay us.
 - ◆ An exciting advantage to online bidding is that you can be notified by email if you are outbid on an item, which lets you increase your bid in time, or bid on something else. **There is a cutoff date and time, for each auction, for entering your bids online.** ★ **Online absentee bidding for this auction closes Friday, Sept. 12 at 9 p.m. CST.**
 - ◆ Remember that just because you are the high bidder in the online catalog, this does not mean you have won the item. Your bid still needs to **beat** the floor bidders and live phone bidders. If your high bid lands with a floor bidder during the live auction, the floor bidder takes precedence. You might want to bid higher on a highly desired item for a better chance at winning its absentee bid.
 - ◆ If you do not receive an item that sold for less than your bid, assume we canceled your bid because the item had a severe manufacture problem, damage, or was not listed correctly.
- 3) Live phone bidding is available on pieces with an estimated sale price of \$500 or more. ★ Contact us by the **Thursday before the auction, which is Sept. 11.** We will need to know the lot# and the phone number that you can be reached at on the day of the auction. We also need your home phone number if different than the above number.

Please call with questions: 641-424-1116.

If you win an online bid you will be notified by phone or e-mail between one to three days after the auction.

There is a \$7 handling charge for each successful bid, with shipping and insurance charges additional.

ONLINE BID INCREMENTS: \$1 - \$100/\$5 \$100 - \$200/\$10 \$200 - \$700/\$25 \$700 - \$1,500/\$50
\$1,500 - \$3,000/\$100 \$3,000 - \$5,000/\$250 \$5,000+ Auctioneer's Discretion

THE POUCHER COLLECTION



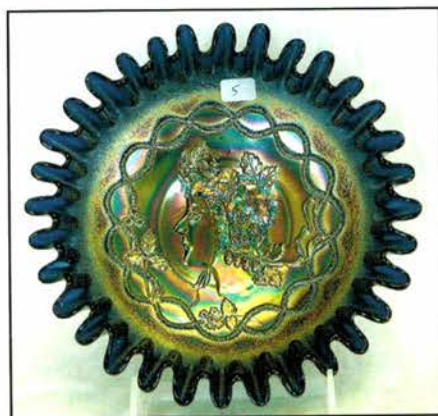
RANDY AND JACKIE POUCHER

When you hear those words, you think of two wonderful people, Jackie and Randy and you also think of Carnival Glass. When Randy passed away, it was Carnival Glass that stayed in Jackie's life and kept her in touch with her friends. They bought and sold lots of glass, had some auctions, and always enjoyed buying all types of glass including some very rare and

exciting pieces. Jackie is ready to let go of the collection but will never let go of all the wonderful friends and will continue to enjoy the conventions. This auction will be one of the best groupings of glass to ever go up for auction. The HOACGA Carnival Glass Association will be putting on several activities to coincide with this auction. Watch their website and emails for more info on these activities.

DON'T MISS THIS SALE OF THE CENTURY!

___ 1. Provence pitcher - marigold - super pretty, by Inwald



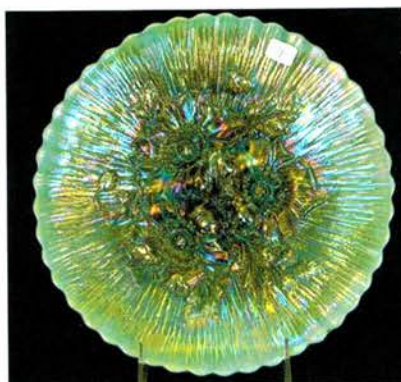
___ 2. Provence tumbler - marigold - also pretty, by Inwald

___ 3. Chesterfield compote or cake plate - red stretch - 5 1/2 high, 9 1/2 diam. very stretchy irid., small nick on base

___ 4. Lacy Dewdrop compote or cake plate - pearlized milk glass

___ 5. **GODDESS OF HARVEST CRE BOWL - BLUE** - ONLY BLUE BOWL IN ANY SHAPE REPORTED, THIS IS A FANTASTIC RARITY, MAY BE A ONCE IN A LIFETIME OPPORTUNITY, WOW!!

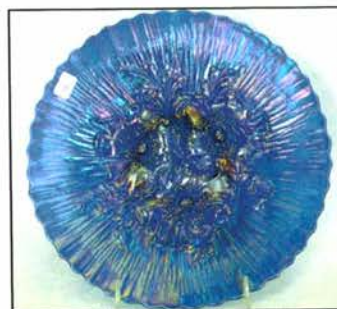
___ 6. **GODDESS OF HARVEST CRE BOWL - AMETHYST** - YES, 2 OF THEM! AGAIN, ANOTHER RARE CHANCE TO BUY ONE OF THE MOST DESIRED PIECES OUT THERE



___ 8. S-Repeat tumbler - marigold - very rare tumbler, highly desirable and nice

___ 9. **POPPY SHOW 9" PLATE - AQUA OPAL** - BEAUTIFUL PASTEL IRID. ON THIS EXTREMELY RARE NORTHWOOD PLATE, A CHANCE AT A GOODIE!

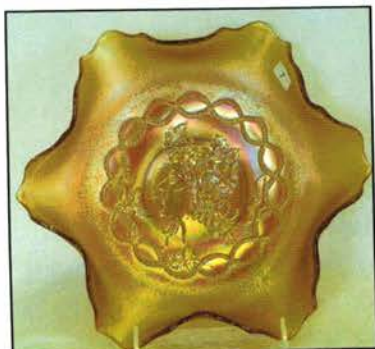
___ 10. Poppy Show 9" plate - ice blue - scarce



___ 11. Poppy Show 9" plate - blue - electric highlights, base repaired

___ 12. Poppy Show 9" plate - marigold - dark, very pretty

___ 13. Poppy Show 9" plate - white - nice



___ 7. **GODDESS OF HARVEST RUFFLED BOWL - MARIGOLD** - NO, 3 OF THEM! THIRD TIME IS A CHARM, ONE OF THE MOST DESIRABLE FENTON PATTERNS, VERY MINOR NO HARM NICK ON BASE



___ 14. M'burg Hanging Cherries tumbler - green - this has the flared base

___ 15. M'burg Hanging Cherries tumbler - green - straight sided base

ONLINE BIDDING AT SEEKAUCTION.COM



___ **16. HOLLY 9" PLATE - AQUA OPAL - ONLY ONE REPORTED IN THIS HIGHLY COLLECTED PATTERN, A FABULOUS FENTON RARITY PLUS SUPER PRETTY**

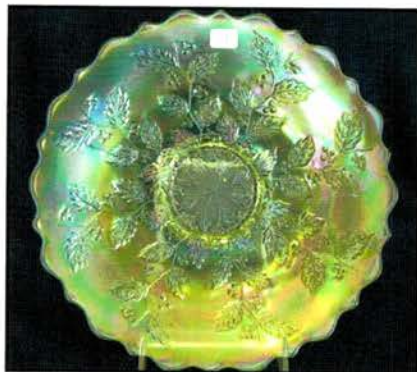
___ 22. Apple Blossom & Shell tumbler - marigold on milk glass - rare tumbler



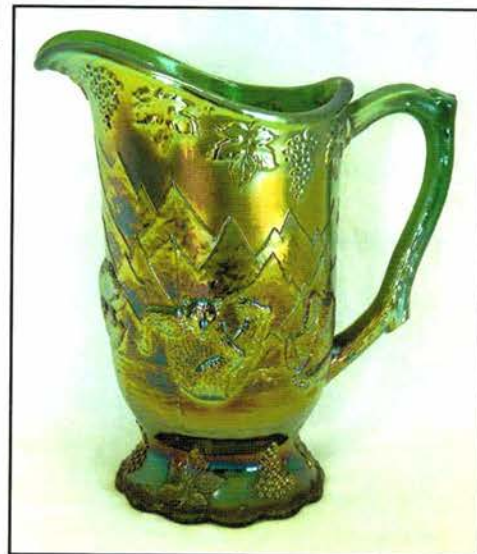
23 to 28,
See opposite page

___ 29. Cone & Tie tumbler - purple - a rare Imperial tumbler, nice!

___ **17. HOLLY 9" PLATE - ICE GREEN - SUPER PRETTY IRID., A BEAUTIFUL PLATE TO ADD TO YOUR HOLLY OR PASTEL COLLECTION, ONLY 1 OR 2 KNOWN**



___ **30. FROLICKING BEARS WATER PITCHER - GREEN - ONE OF THREE WE KNOW OF, THIS ONE IS A TRUE GREEN WHERE THE OTHER TWO ARE MORE OF AN OLIVE GREEN, HAS VERY NICE IRID., MAY BE THE TOP WATER PITCHER IN THE HOBBY, VERY EXCITING!!**



___ **18. BIG BUTTERFLY TUMBLER - OLIVE GREEN - EXTREMELY RARE TUMBLER, SELDOM OFFERED FOR SALE**

___ **31. FROLICKING BEARS TUMBLER - GREEN - THIS IS ALSO A TRUE GREEN COLOR, ALL OTHER TUMBLERS THAT WE HAVE SEEN ARE THE OLIVE GREEN COLOR, EXTREMELY RARE!**

___ **19. N'S PEACOCK AT URN MASTER IC BOWL - AQUA OPAL - ONE OF THE MOST DESIRED PIECES IN THE CARNIVAL HOBBY, SUPER IRIDESCENCE ON THIS OUTSTANDING PIECE OF GLASS!**



___ 32. Frolicking Bears tumbler - clear - this is clear pattern glass with no iridescence, not Carnival



___ 21. N's Peacock at Urn master IC bowl - marigold - lots of pink & yellow irid., pretty

___ 20. N's Peacock at Urn master IC bowl - ice green - scarce, nic



___ **33. NIPPON 9" PLATE W/RIBBED BACK - ICE GREEN - ONLY ONE KNOWN TO EXIST, HAS SUPER PRETTY IRID., A NORTHWOOD'S PLATE COLLECTOR'S DREAM!**



___ 23. M'BURG ROSE COLUMNS EXPERIMENTAL VASE - AMETHYST - THE COLUMNS OF ROSE MEDALLION ARE PAINTED RED & GOLD THEN IRIDIZED OVER, THIS IS AN EXTREMELY UNIQUE PIECE OF GLASS, CAME FROM THE WHITLEY COLLECTION, WOW!

___ 24. M'BURG ROSE COLUMNS VASE - BLUE - VERY FEW KNOWN IN BLUE, HAS PRETTY IRID. WHICH MAKES THE ROSE COLUMNS STAND OUT

___ 25. M'BURG ROSE COLUMNS VASE - MARIGOLD - SUPER PRETTY IRID. ON THIS VERY RARE COLOR, THIS ONE IS STRETCHED ABOUT AN INCH TALLER THAN THE NORMAL HEIGHT, VERY NEAT!

___ 26. M'BURG ROSE COLUMNS VASE - GREEN - VERY NICE EXAMPLE & RARE

___ 27. M'BURG ROSE COLUMNS VASE - AQUA - UNUSUAL COLOR, HAS SATIN IRID., RARE!

___ 28. M'BURG ROSE COLUMNS VASE - AMETHYST - YET ANOTHER VERY RARE MILLERSBURG VASE, WILL PROBABLY NEVER SELL SIX IN A ROW AGAIN IN MY LIFETIME!

___ 34. God & Home tumbler - blue - scarce



___ 35. TREE TRUNK MID-SIZE 11 1/2" VASE - AQUA OPAL - THESE ARE EXTREMELY RARE, THIS ONE HAS OPAL FROM TOP TO BOTTOM WITH SUPER PRETTY IRID., THEY DON'T GET MUCH BETTER!

___ 36. TREE TRUNK MID-SIZE 15" VASE - RENNINGER BLUE - EXTREMELY RARE COLOR, DON'T BELIEVE I HAVE SOLD ONE BEFORE, SUPER PRETTY!



___ 37. Tree Trunk mid-size 11 1/4" vase - lime green - pretty irid. on this rare color

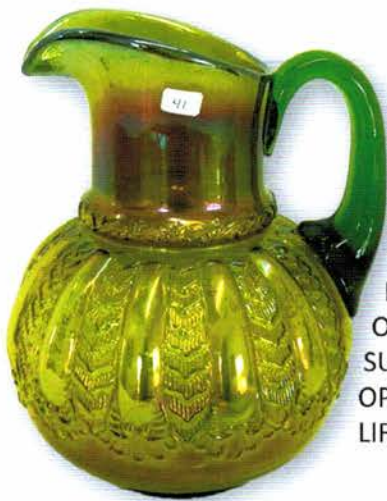
___ 38. Tree Trunk mid-size 11 1/2" vase - white - frosty & super



___ 39. Tree Trunk mid-size 12 1/2" vase - blue - super electric irid. from top to bottom, scarce color

___ 40. Drapery tumbler - white - extremely rare, not many known





___ 41. M'BURG
GAY NINETIES WATER
PITCHER - GREEN -
ONE OF TWO KNOWN,
SUPER PRETTY, ANOTHER
OPPORTUNITY OF A
LIFETIME



___ 45. M'burg Hobstar
& Feather tumbler - light
marigold - another rare
tumbler

___ 46. ROSE
SHOW RUFFLED
BOWL - MARIGOLD
ON CUSTARD - ONLY
KNOWN EXAMPLE,
FROM THE WHITLEY
COLLECTION,
FABULOUS PIECE!



___ 42. M'burg Gay Nineties 7 pc. water set - amethyst
- super pretty pitcher, unfortunately has crack in handle,
extremely rare set, included is a group of postcards
showing the M'burg water sets from the 70's

___ 43. M'burg Gay
Nineties tumbler - marigold
- very rare tumbler, nice

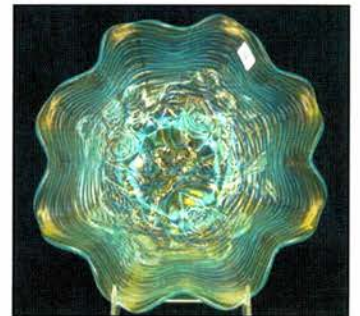


___ 44. GRAPE & CABLE
HATPIN HOLDER - AQUA
OPAL - EXTREMELY RARE
COLOR, OPAL GOES DOWN
TO LEAVES, BUTTERSCOTCH
W/SUPER IRID.



___ 47. ROSE SHOW
RUFFLED BOWL - LIME
GREEN OPAL - RARE COLOR
& PRETTY

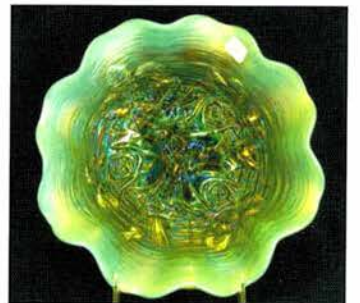
___ 48. Rose Show ruffled
bowl - ice blue - scarce
color, nice, very minor
pinpoint on edge



___ 49. Rose Show ruffled
bowl - green - gorgeous,
they very seldom look this
great



___ 50. Rose Show ruffled
bowl - aqua opal - pastel,
pretty

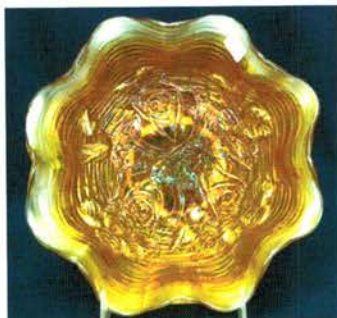


___ 51. Rose Show
ruffled bowl - blue - has
electric highlights





___ 52. Rose Show ruffled bowl - amethyst - some may call this lavender, has pretty irid.



___ 53. Rose Show ruffled bowl - marigold - nice

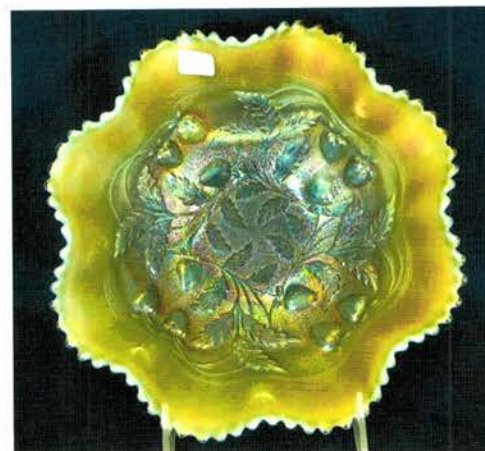
___ 54. Rose Show ruffled bowl - white - nice



___ 60. Grape Arbor 7 pc. tankard water set - ice blue - very scarce set, nice

___ 61. Beaded purse - hand made in China

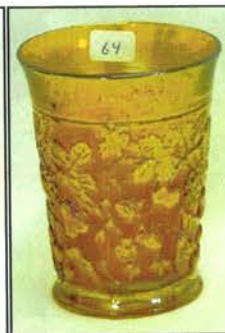
___ 62. STIPPLED STRAWBERRY RUFFLED BOWL W/RIBBED BACK - AQUA OPAL - LESS THAN A HANDFUL KNOWN, HEAVY OPAL W/ BUTTERSCOTCH IRID.



___ 55. GRAPE ARBOR TANKARD WATER PITCHER - ICE GREEN - EXTREMELY RARE COLOR FOR THESE, A TOP PITCHER IN THE SALE, VERY NICE, WOW!

___ 56. Lot of 2 Grape Arbor tumblers - ice green - both are super, one has chips on base

___ 57. Grape Arbor tumbler - ice green - has etching "Helen 1914"



___ 63. M'burg Multi Fruits & Flowers tumbler - amethyst - radium, super, minor nick on base

___ 64. M'burg Multi Fruits & Flowers tumbler - marigold - radium, nice

___ 58. Grape Arbor tankard water pitcher - blue - another extremely rare color, not often sold, has crack in handle



___ 59. Grape Arbor tumbler - blue - has etching "Belleville O. 1914", nice

___ 65. INDIANAPOLIS SOLDIERS & SAILOR'S MONUMENT IC SHAPED BOWL - BLUE - ONLY KNOWN IC SHAPED BOWL W/ONLY ONE OTHER PLATE KNOWN WITH THIS MONUMENT, SUPER PRETTY TOO!!



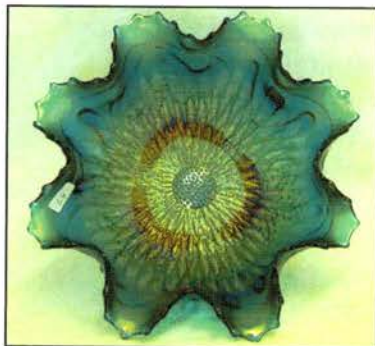
___ 66. Fashion tumbler - smoke - scarce color





___ 67. SUNFLOWER SPT FTD RUFFLED BOWL - AQUA OPAL - AGAIN, ONE OF JUST A FEW KNOWN, THIS ONE HAS PASTEL IRID., I BELIEVE THE OTHERS ARE MORE BUTTERSCOTCH, ANOTHER FANTASTIC AQUA OPAL PIECE!

___ 68. Sunflower spt ftd ruffled bowl - renninger blue - rare color, highly desirable



___ 74. PEACOCK AT THE FOUNTAIN 7 PC. PUNCH SET - ICE BLUE - VERY RARE COLOR, SUPER, HERE COMES A GREAT LINE UP!



___ 75. PEACOCK AT THE FOUNTAIN PUNCH BOWL, BASE & 1 CUP - LIME GREEN - BASE & CUP ARE ICE GREEN, BOWL IS LIME GREEN, MANY OF THESE SETS I'VE SEEN THIS WAY, VERY RARE

___ 76. PEACOCK AT THE FOUNTAIN 7 PC. PUNCH SET - WHITE - FROSTY & BEAUTIFUL, VERY RARE SET



___ 77. Peacock at the Fountain 6 pc. punch set - blue - super pretty example, open bubble on top edge of base, minor pinpoint on top outside edge of bowl!

___ 78. Peacock at the Fountain 10 pc. punch set - purple - super pretty set, inside of bowl is outstanding



___ 79. Peacock at the Fountain 7 pc. punch set - marigold - another beautiful set

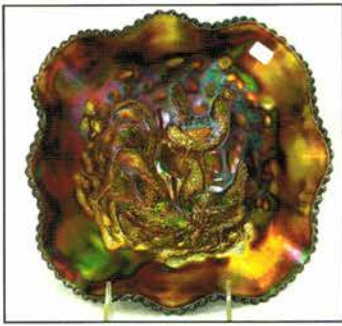


___ 69. M'BURG MITERED OVALS VASE - AMETHYST - FANTASTIC IRID. ON THIS VERY RARE VASE

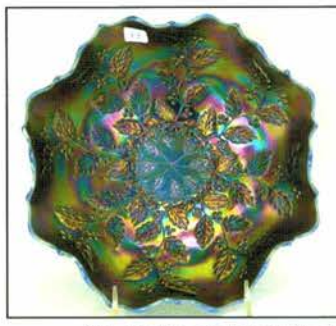
___ 70. M'BURG MITERED OVALS VASE - MARIGOLD - PROBABLY THE RAREST COLOR, HAS SUPER IRID., LOTS OF PINK & YELLOW

___ 71. M'BURG MITERED OVALS VASE - GREEN - VERY PRETTY EXAMPLE, ANOTHER WONDERFUL MILLERSBURG VASE

___ 72. Grapevine Lattice tumbler - purple - super
___ 73. Grapevine Lattice tumbler - marigold - nice



___ 80. FARMYARD SQUARE RUFFLED BOWL - PURPLE - PRETTY IRID., ONE OF THE MOST DESIRED PATTERNS IN CARNIVAL GLASS, HERE ARE A FEW TO CHOOSE FROM!



___ 88. Holly eight ruffled bowl - red - very scarce

___ 87. Holly eight ruffled bowl - blue opal - super pretty example, rare

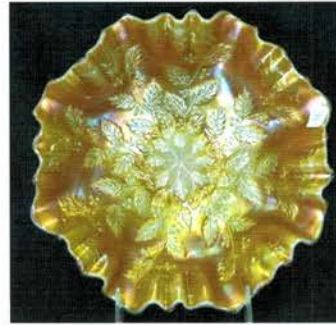


___ 89. Holly eight ruffled bowl - marigold

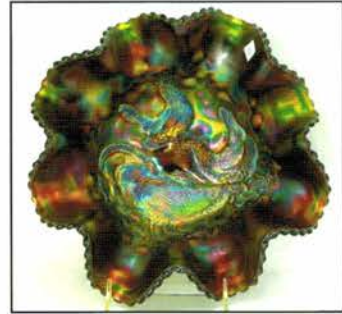
___ 81. FARMYARD 3 IN 1 EDGE BOWL - PURPLE - VERY SCARCE SHAPE, HIGHLY DESIRABLE



___ 82. FARMYARD 8 RUFFLED BOWL - PURPLE - VERY PRETTY, HIGHLY DESIRABLE



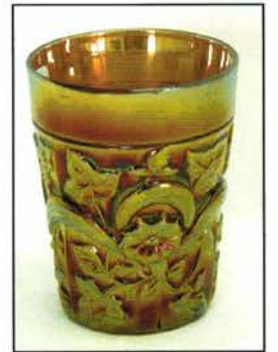
___ 90. Holly 3 in 1 edge bowl - marigold on moonstone - pretty example of this very rare bowl



___ 83. FARMYARD DIAMOND OR SQUARE SHAPED BOWL - PURPLE - FANTASTIC IRID., A SMALL CHIP ON ONE POINT HAS BEEN POLISHED SO IT IS MISSING IRID. ON THREE POINTS



___ 91. M'burg Morning Glory tumbler - amethyst - very rare, polishing on base that may be factory with a couple chips off that polishing



___ 92. M'burg Morning Glory tumbler - marigold - super rare tumbler, highly desirable



___ 84. M'burg Hobnail tumbler - green - extremely rare, few known, minor nicks on edge of base

___ 85. M'burg Hobnail tumbler - marigold - again, very scarce, one minor pinpoint on bottom edge

___ 86. HOLLY SIX RUFFLED BOWL - AQUA OPAL - ONLY KNOWN EXAMPLE, PRETTY BUTTERSCOTCH IRID., EVERYONE NEEDS THIS ONE IN THEIR RUN OF HOLLY BOWLS



___ 93. ORIENTAL POPPY TANKARD WATER PITCHER W/ RIBBED INTERIOR - ICE GREEN - SUPER RARE PITCHER, SUPER PRETTY, CAN'T ASK FOR A BETTER ONE

___ 94. Lot of 3 Oriental Poppy tumblers - ice green - hard to find



___ 95. ORIENTAL POPPY RIBBED 6 PC. TANKARD WATER SET - ICE BLUE - DARK COLOR, VERY PRETTY IRID.



___ 96. Oriental Poppy 7 pc. tankard water set - white - frosty, pretty, great set

___ 97. Oriental Poppy tumbler - purple



___ 105. Rose Show 9" plate - white - scarce

___ 106. Formal JIP vase - marigold - very rare piece, neat shape

___ 103. Rose Show 9" plate - blue - pretty irid., chip on rose

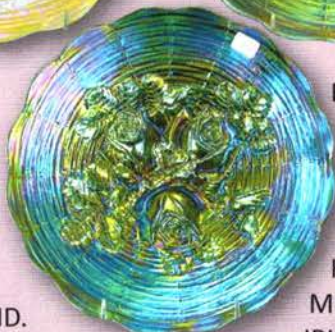
___ 104. Rose Show 9" plate - marigold - dark, nice



___ 98. ROSE SHOW 9" PLATE - MARIGOLD ON CUSTARD - EXTREMELY RARE PLATE & NICE, EVEN IRID. ACROSS ENTIRE PLATE



___ 99. ROSE SHOW 9" PLATE - LIME GREEN OPAL - EXTREMELY RARE PLATE, HAS PRETTY MULTI COLORED IRID.



___ 100. ROSE SHOW 9" PLATE - EMERALD GREEN - RARE COLOR, POLISHED CHIP ON ROSE

___ 107. RUSTIC 22" FUNERAL VASE W/ PLUNGER BASE - AMETHYST - BACKSIDE IS 22", FRONT SIDE IS 15", VERY UNIQUE SHAPE



___ 108. RUSTIC 22 3/4" FUNERAL VASE W/ PLUNGER BASE - GREEN - SUPER PRETTY IRID., HARD TO FIND THIS TALL



___ 102. Rose Show 9" plate - purple - super pretty, rare color

___ 101. Rose Show 9" plate - ice blue - super pretty plate, minor pinpoint on rose



___ 109. Rustic 22 1/2" funeral vase w/plunger base - blue - also, super pretty, again, normally not this tall

___ 110. Rustic 18" funeral vase - red - non irid., very rare to find



___ 111. EMBROIDERED MUMS PCE BOWL W/RIBBED BACK - SAPPHIRE - FANTASTIC PASTEL IRID., A VERY RARE BOWL ESPECIALLY PASTEL, WOW!

___ 112. Six Sided candlesticks – marigold - scarce, nice

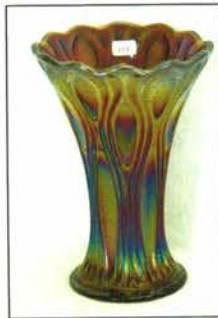


___ 118. Good Luck 9" plate w/BW back – marigold - scarce

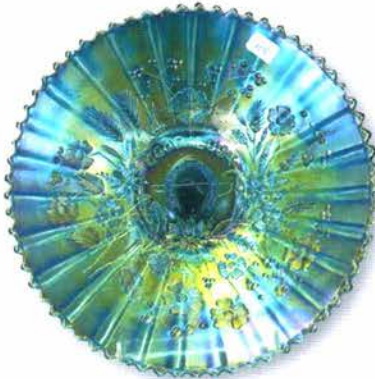
___ 113. STIPPLED GRAPE & CABLE BONBON - PEACH OPAL - FANTASTIC OPAL, DARK MARIGOLD COLOR, BEAUTIFUL IRID., SOME PEOPLE BELIEVE NORTHWOOD DID NOT MAKE PEACH OPAL - HERE YA GO!



___ 114. M'burg Tulip Scroll 7 1/2" squatty vase - amethyst - scarce, nice



___ 119. ACORN BURRS 8 PC. PUNCH SET - ICE GREEN - FANTASTIC IRID. ON THIS RARE COLORED SET, DARK FOR ICE GREEN, 5 OF THE PUNCH CUPS ARE LIME GREEN



___ 115. GOOD LUCK 9" PLATE W/RIBBED BACK - ICE BLUE - GORGEOUS IRID. ON AN EXTREMELY RARE PLATE, NOT MANY KNOWN, ANOTHER WOW!



___ 120. Acorn Burrs 7 pc. punch set - ice blue - rare set, one flange broke off, open bubble on base

___ 116. GOOD LUCK 9" PLATE W/RIBBED BACK - BLUE - RARE COLOR IN PLATES, ELECTRIC & FANTASTIC, MINOR NICK ON BOTTOM CLEAT OF HORSESHOE



___ 117. Good Luck 9" plate w/BW back - horehound - rare color for this plate, very nice

___ 121. Acorn Burrs 8 pc. punch set - white - rare set, nice, bowl is quite frosty, one cup is cracked



___ 122. Acorn Burrs 8 pc. punch set - green - very pretty set, highly desirable set



___ 123. Acorn Burrs
8 pc. punch set - purple
- very scarce, very
pretty



___ 130. LILY
OF THE VALLEY
6 PC. WATER
SET - BLUE
- PITCHER IS
VERY PRETTY
& EXTREMELY
RARE, NOT
MANY SETS
AROUND, ONE
TUMBLER
W/CHIP ON
BASE



___ 124. Acorn
Burrs 8 pc. punch
set - marigold -
super dark matching
set

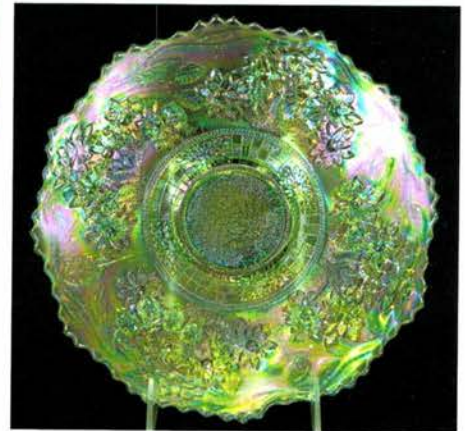


___ 131. Four Seventy Four 10"
vase - marigold - hard vase to
find, nice

___ 132. ORANGE TREE W/
TRUNK 9" PLATE - ICE GREEN -
SUPER PRETTY IRID., VERY RARE
COLOR, NOT MANY KNOWN



___ 125. GOOD
LUCK PCE BOWL
W/RIBBED
BACK - AQUA
OPAL - PASTEL
& BEAUTIFUL,
VERY FEW
KNOWN, SOME
MANUFACTURE
ROUGHNESS
BETWEEN
POINTS



___ 133. Luster
Rose flared out
whimsey - powder
blue - made from
tumbler, only one
I've seen, has crack
around base

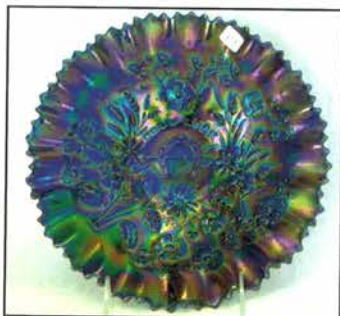
___ 126. Good Luck
PCE bowl w/ribbed
back - emerald green - super
pretty



___ 127. Good Luck PCE
bowl w/ribbed back - blue -
electric & nice



___ 134.
CHRISTMAS
COMPOTE
- MARIGOLD -
SUPER DARK W/
PRETTY IRID.,
RARE, RARE,
RARE



___ 128. Good Luck PCE
bowl w/ribbed back -
marigold - nice



___ 129. Good Luck PCE
bowl w/BW back - green -
scarce

___ 135.
CHRISTMAS
COMPOTE -
PURPLE - ALSO
SUPER, PRETTY
INSIDE & OUT, A
GREAT PAIR



___ 136. N's Nearcut water pitcher - marigold - very rare pitcher, not often seen

___ 137. N's Nearcut tumbler - marigold - also scarce



___ 138. HOLLY IC SHAPED BOWL - CELESTE BLUE - RARE BOWL & NICE, ESPECIALLY IN THIS COLOR, STRETCHY



___ 143. TREE TRUNK 19" FUNERAL VASE - BLUE - SUPER PRETTY EXAMPLE W/ ELECTRIC HIGHLIGHTS, RARE



___ 144. Tree Trunk 21" funeral vase - purple - very rare vase, not many this tall



___ 139. Stippled Peacocks PCE bowl w/ribbed back - renninger blue - rare color



___ 145. Tree Trunk 17" funeral vase - purple - pretty, has spot of epoxy on one ruffle

___ 146. Hearts & Flowers ruffled bowl w/ribbed back - marigold - pretty

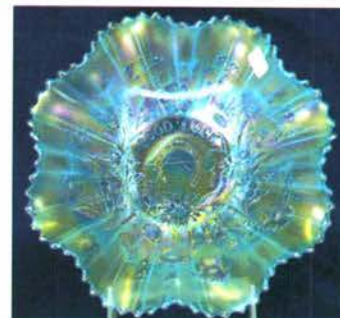


___ 147. GOOD LUCK RUFFLED BOWL W/ RIBBED BACK - ICE GREEN - EXTREMELY RARE BOWL, NOT MANY AROUND, HAS PRETTY IRID., MINOR PINPOINT ON CLEAT OF HORSESHOE

___ 140. DANDELION 7 PC. TANKARD WATER SET - WHITE - VERY RARE SET IN WHITE, FROSTY & NICE



___ 148. GOOD LUCK RUFFLED BOWL W/ RIBBED BACK - ICE BLUE - GORGEOUS IRID. ON THIS RARE BOWL, NICE



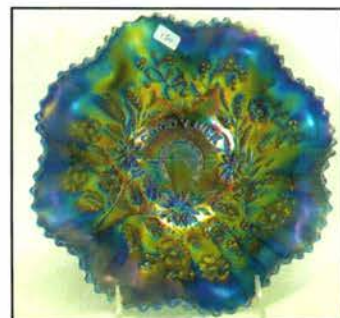
___ 141. DANDELION 5 PC. TANKARD WATER SET - ICE BLUE - SUPER RARE, SUPER PRETTY, DARK COLOR

___ 149. GOOD LUCK RUFFLED BOWL W/ RIBBED BACK - AQUA OPAL - PRETTY WITH NICE OPAL, VERY RARE



___ 142. M'burg Hanging Cherries master IC shaped bowl - marigold - satin

___ 150. GOOD LUCK RUFFLED BOWL W/RIBBED BACK - COBALT BLUE OPAL - VERY SLIGHT OPAL ON THE EDGE, EXTREMELY RARE BOWL, PRETTY





___ 151. Good Luck ruffled bowl w/ribbed back - sapphire - rare color

___ 152. Good Luck ruffled bowl w/BW back - horehound - rare color, minor nick between two points

___ 153. Good Luck ruffled bowl w/BW back - purple

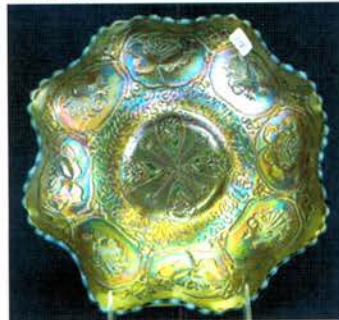
___ 154. Good Luck ruffled bowl w/BW back - marigold - pretty

___ 155. **M'BURG HONEYCOMB & HOBSTAR VASE - AMETHYST - EXTREMELY RARE VASE & SUPER, VERY MINOR PINPOINT ON BOTTOM OF POINT OF BASE, ONLY A HANDFUL OF THESE KNOWN**

___ 156. N's Thin Rib 8 1/2" JIP vase - green - rare shape for these vases, nice

___ 157. N's Thin Rib 7" JIP vase - marigold - quite squatty for these, unusual

___ 158. **DRAGON & LOTUS RUFFLED BOWL - AQUA OPAL - VERY RARE & HIGHLY DESIRABLE, NICE**



___ 159. Dragon & Lotus ruffled bowl - red - scarce, nice



___ 161. Set of bathroom bottles in metal tray - marigold - one bottle is damaged

___ 162. Forget Me Not 5 pc. tankard water set w/3 bands - green - rare, nice

___ 163. Forget Me Not 3 pc. tankard water set w/3 bands - amethyst - scarce, pretty



___ 164. Forget Me Not 5 pc. tankard water set w/3 bands - blue - this version has fewer flowers, but larger flowers, nice, one tumbler w/chip on base

___ 165. Forget Me Not 7 pc. tankard water set w/3 bands - marigold - scarce set, pretty



___ 166. **ELK RUFFLED NAPPY - PURPLE - ONE OF A FEW KNOWN, SUPER PRETTY, A GREAT ELK PIECE!**

___ 167. Wishbone 10" PCE bowl - green - very pretty, scarce

___ 168. **TREE TRUNK 8" JIP VASE - MARIGOLD - VERY RARE IN THE TREE TRUNK PATTERN, SUPER**

___ 169. Wide Panel 9" deep round bowl - red - stretch



___ 160. **S-REPEAT 14 PC. PUNCH SET - PURPLE - SUPER BEAUTIFUL & EXTREMELY RARE, THE DEMAND FOR THESE IS QUITE HIGH**



___ 170. J.N. LEDFORD COMPANY COOLEEMEE N.C. / HEART & VINE 9" PLATE - MARIGOLD - FANTASTIC IRID. ON THIS VERY RARE LETTERED PIECE, CAN'T SAY I'VE SEEN ONE PRETTIER



___ 178. Luster Rose 7 pc. water set - purple - pitcher is outstanding, couple of tumblers have damage

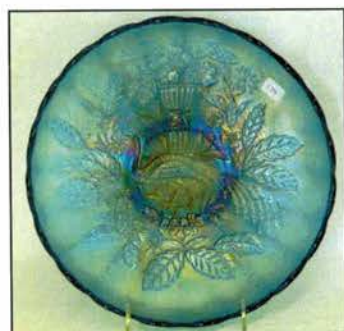
___ 171. Diamond Rib 6" squatty vase w/whimsey ruffled top - green - unusual shape, minor peeling on top edge



___ 172. EMBROIDERED MUMS RUFFLED BOWL W/RIBBED BACK - AQUA OPAL - SUPER PRETTY EXAMPLE OF THESE, MANY HAVE POOR IRID., THIS ONE DOES NOT!

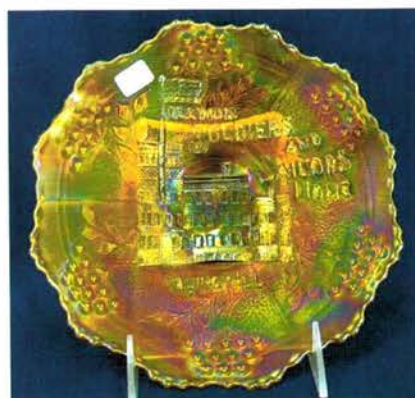
___ 179. Pepsi Cola tall soda glass - light marigold
___ 180. Coca Cola small juice glass - light marigold

___ 181. Illinois Soldiers & Sailors 7" plate - blue - super pretty, scarce



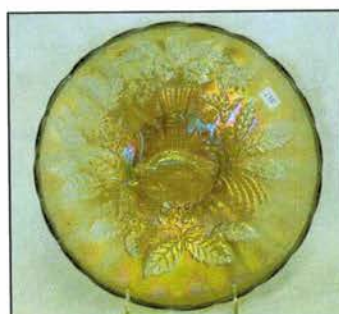
___ 173. Rustic midsize 10" squatty vase - marigold - scarce, nice

___ 174. N's Stippled Peacock at Urn master IC bowl - renninger blue - rare color & hard to find



___ 182. Illinois Soldiers & Sailors 7" plate - marigold - scarce, highly desirable

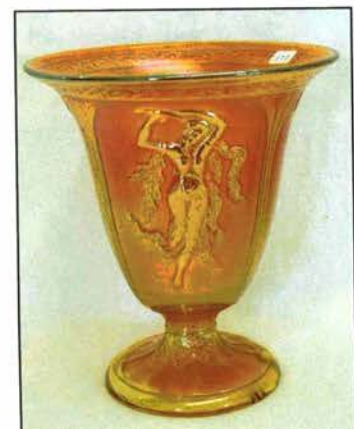
___ 175. N's Stippled Peacock at Urn master IC bowl - smoke/clambroth - unusual bowl, haven't sold one for a long time, nice



___ 183. Tree Trunk 7" squatty vase - ice blue - super pretty example, very minor peeling on ruffle, typical on Tree Trunks

___ 184. Tree Trunk 8" squatty vase - blue - nice

___ 185. Tree Trunk 6" squatty vase - green



___ 176. Enameled Connie 7 pc. water set - frosted white - rare Northwood set

___ 177. DANCE OF THE VEILS FLARED VASE - MARIGOLD - SUPER PRETTY IRID., EXTREMELY RARE, LARGE CHIP ON BASE



___ 186. Tree Trunk 6 1/2" squatty vase - purple

___ 187. Peacocks 9" plate w/ribbed back - ice blue - very scarce plate, nice



___ 188. Double Daisy Variant enameled water pitcher - marigold - have not seen this shape before, rare enameled piece

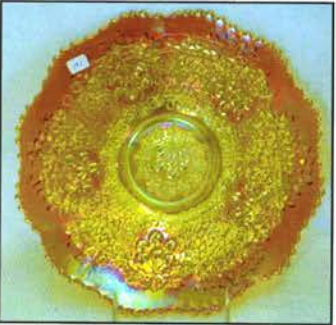


___ 191. Cherry Chain chop plate - marigold - very rare, highly desirable & nice, has Orange Tree back

___ 192. M'burg Bullseye & Loop 6 1/2" squatty vase - amethyst - scarce, nice

___ 189. M'burg Big Fish IC shaped bowl - amethyst - satin, super nice bowl

___ 190. Butterfly & Berry 8 1/2" vase - red - very scarce, nick on backside of one ruffle

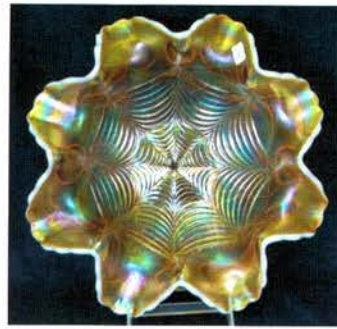
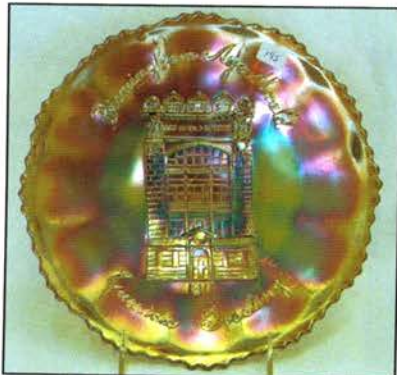


___ 193. INVERTED FEATHER TANKARD WATER PITCHER - MARIGOLD - EXTREMELY RARE, VERY FEW KNOWN, A TOP CAMBRIDGE PIECE, MINOR CHIP ON HANDLE

___ 194. Nine Sixteen 7 1/2" squatty vase - blue - super rare in the squatty shape, has crack across base



___ 195. 1911 BIRMINGHAM AGE HERALD 9" PLATE - AMETHYST - SUPER NICE PLATE, VERY PRETTY, HIGHLY DESIRED



___ 197. Stretch Glass punch bowl & base - red - very hard to find, super nice, bowl has a nick on the base, bases to this punch set are extremely rare, bowl is irid. on inside only



___ 199. PEACOCK AT THE FOUNTAIN RUFFLED FRUIT BOWL - RENNINGER BLUE - VERY RARE COLOR, NOT MANY KNOWN



___ 200. Long Thumbprint 6 1/2" squatty JIP vase - green - unusual in this pattern



___ 203. M'burg Big Fish 3 in 1 edge bowl - marigold - satin, hard to find this edge in Big Fish

___ 196. Heavy Web 11" ruffled bowl - peach opal - very scarce, pretty



___ 198. M'burg Trout & Fly square shaped bowl - marigold - satin, nice

___ 201. Inverted Strawberry tankard water pitcher - amethyst - scarce pitcher, manufacture mold roughness on base

___ 202. Lot of 3 Inverted Strawberry tumblers - amethyst - nice





___ 204. MORNING GLORY 13" FUNERAL VASE - SMOKE - RARE IN THIS COLOR, HIGHLY DESIRABLE & NICE

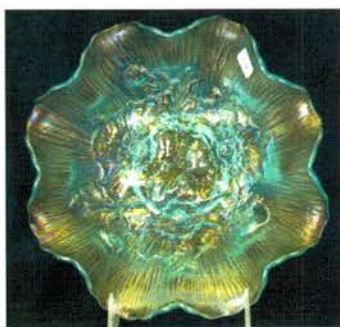


___ 205. Morning Glory 15" funeral vase - purple - scarce, nice

___ 206. Morning Glory 12 1/2" funeral vase - marigold - dark, super



___ 207. Vintage 3 in 1 edge bowl 9" bowl - red - cherry red color, hard to find in this shape



___ 208. Poppy Show ruffled bowl - ice blue - pretty irid., minor heat checks in base

___ 209. Poppy Show ruffled bowl - white - scarce, nice



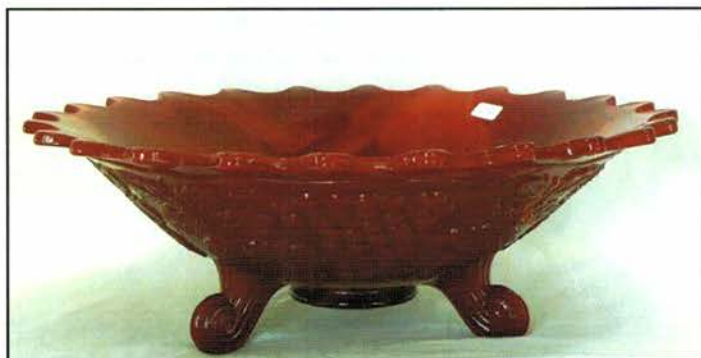
___ 210. Poppy Show ruffled bowl - blue - electric blue highlights, very pretty

___ 211. Poppy Show ruffled bowl - marigold - small chip on collar base

___ 212. Little Flowers 10" ruffled bowl - amberina - very scarce bowl, nice



___ 213. Enameled Forget Me Not tankard water pitcher on plain blank - marigold - scarce on this pitcher



___ 214. FENTON'S GRAPE & CABLE FLARED OUT CENTERPIECE BOWL - MANDARIN RED - NON IRIDIZED, BELIEVED TO BE A WHIMSEY SHAPE, IS 14" IN DIAMETER, NEAT NON CARNIVAL PIECE

___ 215. N's Town Pump - purple - scarce, very nice



___ 216. Hearts & Flowers 9" plate w/ribbed back - marigold - minor nick in pattern



___ 217. Birmingham Age Herald IC shaped bowl - amethyst - super example, rare shape



___ 218. Optic & Buttons water pitcher - marigold - has Imperial Cross Mark



___ 219. N'S THIN RIB 12" MIDSIZE VASE - AQUA OPAL - BUTTERSCOTCH, A RARE VASE THAT IS SUPER NICE



___ 228. M'burg Trout & Fly 3 in 1 edge bowl - green - satin & nice



___ 229. M'burg Trout & Fly 3 in 1 edge bowl - amethyst - satin, scarce

___ 220. M'burg Hanging Cherries ruffled bowl w/ Hobnail back - marigold - satin & pretty, hard to find in marigold



___ 221. Drapery 8" vase - sapphire - super pretty, rare color



___ 230. Tree Trunk midsize 12" vase w/ plunger base - marigold - has slight manufacture peeling on one ruffle, again typical for these vases, super nice



___ 222. FRUIT SALAD 8 PC. PUNCH SET - PEACH OPAL - CAN'T REMEMBER WHEN I HAVE SOLD THIS SET, BOWL HAS CHIP ON BASE, BASE HAS CHIP ON TOP EDGE, VERY RARE

___ 231. Tree Trunk midsize 12" vase w/plunger base - marigold - has slight manufacture peeling on a couple ruffles, nice matching pair

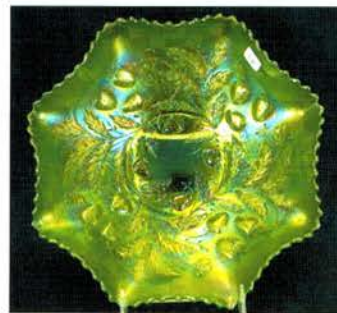
___ 223. Nautilus whimsy 8" vase - purple - scarce, nice



___ 224. Peacocks PCE bowl w/ribbed back - ice blue - very scarce bowl, highly desirable

___ 225. Peacocks PCE bowl w/ribbed back - purple - scarce

___ 226. Peacock PCE bowl w/BW back - marigold - scarce w/BW back



___ 232. WILD STRAWBERRY 10" RUFFLED BOWL W/BW BACK - LIME GREEN - VERY RARE COLOR W/SUPER PRETTY IRID., A DANDY

___ 233. Tree Trunk 11" vase - ice blue - scarce



___ 227. Plume Panels 10 1/2" vase - red - very pretty, has minor chips on base



___ 234. Dahlia 7 pc. water set - marigold - this is a really nice set!



___ 237. Enameled Forget Me Not tankard water pitcher w/3 bands - blue - has larger, fewer flowers, nice



___ 240. Stippled Grape & Cable PCE bowl w/ribbed back - aqua opal - super pretty example, great opal, one point polished

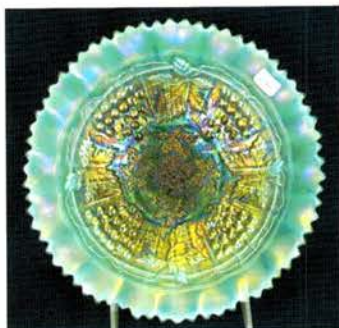


___ 235. Acorn ruffled bowl - red - scarce
___ 236. Novelty sword - red - 34" long, does have irid., contemporary



___ 238. FENTON GOOD LUCK / HEART & HORSESHOE RUFFLED BOWL - MARIGOLD - RARE, VERY NICE

___ 239. Crackle water pitcher & tumbler - marigold



___ 241. BLACKBERRY BLOCK TANKARD WATER PITCHER - GREEN - HARD TO FIND PITCHER, NICE

___ 242. Lot of 2 Blackberry Block tumblers - green

___ 243. Memphis 8 pc. punch set - marigold - very pretty set, scarce



___ 244. Twigs 3 1/2" JIP CRE miniature vase - purple - cute, rare



___ 247. THREE ROW VASE - MARIGOLD - DARK, SUPER, AS NICE AS THESE GET, RARE!



___ 251. TREE TRUNK 12 1/2" ELEPHANT FOOT FUNERAL VASE - PURPLE - HAS TO BE THE BEST EXAMPLE KNOWN, ELECTRIC BLUE IRID. ALL OVER, AMAZING!

___ 252. Leaded glass lamp made from Carnival Glass pieces

___ 253. Bullseye & Beads 12" vase - marigold - includes Rustic vase that is damaged

___ 254. Blackberry Bramble ruffled compote green

___ 255. N's Enameled Cherry tumbler - blue have not seen this enameled tumbler before

___ 256. Enameled Daisy tumbler - blue - same tumbler as the Daisy & Little Flower, but flower is different color and Daisies are not there

___ 257. Enameled Daisy & Little Flowers tumbler - blue

___ 258. Strawberry Scroll tumbler - blue

___ 259. Stretch Glass tumbler - red

___ 260. Ranger tumbler - marigold

___ 261. Blueberry tumbler - blue - silvery

___ 262. Enameled Lotus tumbler - marigold

___ 263. Field Flower tumbler - purple

___ 264. Grape & Cable tumbler - green

___ 265. Floral & Grape tumbler - green

___ 266. Enameled Cora Nome tumbler - green

___ 267. Indiana Glass punch bowl base glued to chop plate - red - only one known, LOL

___ 245. Morning Glory 9 1/2" JIP vase - marigold

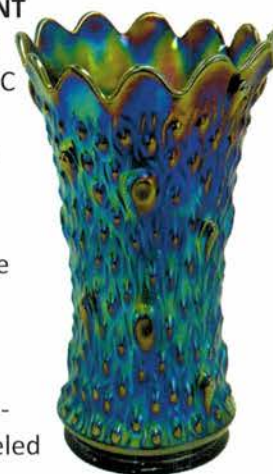
___ 246. M'burg Courthouse ruffled bowl - amethyst - radium, nice, scarce



___ 248. M'burg Vintage IC shaped bowl w/ Hobnail back - green - satin, rare, polished chip on inside edge

___ 249. Corinth 9 1/2" JIP vase - marigold on milk glass

___ 250. Cara Nome decorated 7 pc. water set - frosted white



*Carnival Glass 2014 Auction
Embassy Suites
International Airport Hotel
Kansas City, Missouri*

*Seeck Auctions
PO Box 377
Mason City, Iowa
50402*

