

# WWWCGA Carnival Glass Convention Show- Sale & Auctions- *ALL open to the public at NO CHARGE!*

## \*\*\*\*\*Mail, E-Mail, Phone and Absentee Bids Policy:\*\*\*\*\*

Absentee Bidding: Absentee bidding is available via our "Auction Flex" bidding system. You may also email us, or mail your absentee bids. You can also do "live phone" bids. Just give us a call at 937.548.7835 or 716.526.4230 to set up your item schedule. Remember, call early as we have 2 lines available per item. There is a \$7.00, per successful bid, convenience fee. We reserve the right to cancel ANY bid for ANY reason. We will cancel all bids on an item if damage is found during the auction. If you do not hear from us by Tuesday following week, you did not win.

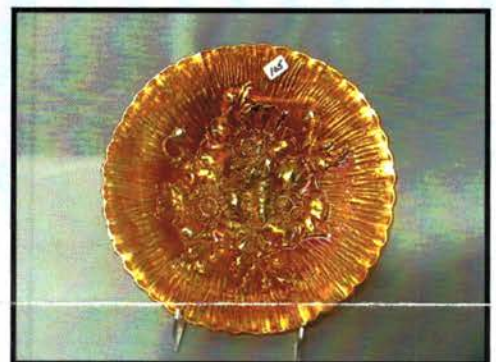
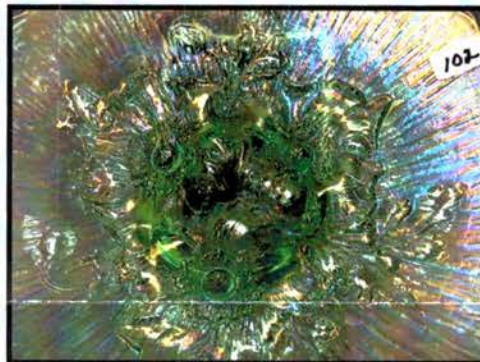
**Terms & Conditions:** Cash, Travelers checks, business or personal checks w/I.D. Visa/ MC & Discover with a 3% clerking fee.  
\*\*\*\* We reserve the right to withdraw any damaged item from the auction before the bidding starts.\*\*\*\*

## Jim Wroda Auctions

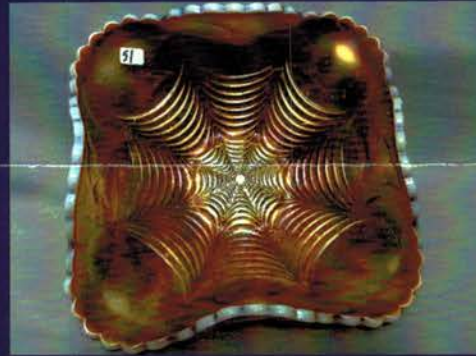
2118 Magnolia Ave, Ashville, NY 14710  
Jims Cell: 937.459.9556

716.526.4239 NY office  
Email us: JimWroda@mac.com

*Visit our website site for full weekend coverage at*  
**[www.jimwrodaauction.com](http://www.jimwrodaauction.com)**









## August 30, 2014 WWWCGA Carnival Glass Listing

- |    |   |    |  |
|----|---|----|--|
| 1  | Imperial 14" amber Ripple funeral vase.   | 44 | Nwood 9" elec. purple Nippon PCE bowl. Really nice color!                                |
| 2  | Imperial 9" amber Ripple vase   | 45 | Nwood 9" IB Nippon PCE bowl.   |
| 3  | Imperial 8" amber Ripple vase   | 46 | Nwood 9" frosty white Nippon PCE bowl.   |
| 4  | Imperial. 7" green Ripple vase Small bruise inside neck                           | 47 | Dugan 9" elec. purple Cherries 10-ruffle bowl.   |
| 5  | Imperial 16" purple Ripple vase w/electric highlights                             | 48 | Dugan 9" killer elec. purple Ski Star 3/1 edge bowl.                                     |
| 6  | Imperial 12" purple Ripple vase w/electric highlights. Pretty!                    | 49 | Dugan 9" purple Raindrops bowl. Scarce.  |
| 7  | Imperial 10 1/2" elec. purple Ripple squatty midsize vase. Pretty & scarce.       | 50 | Dugan light amy. Basketweave basket  |
| 8  | Imperial 7" electric purple Ripple vase.  | 51 | VERY RARE Dugan 10" PO Heavy Web square bowl w/Morning Glory ext.                        |
| 9  | Imperial 8" electric purple Ripple vase   | 52 | Dugan pumpkin peach opal 9" Round Up low ICS bowl.                                       |
| 10 | Imperial 8" purple Ripple vase  | 53 | Dugan 11" PO Persian Garden ICS bowl   |
| 11 | RARE 18 1/2" GREEN RIPPLE FUNERAL VASE W/FLARED TOP. NOT MANY CHANCES TO BUY ONE. | 54 | Dugan 9" PO Soutache flared plate.   |
| 12 | Imperial 11" green Ripple vase  | 55 | Dugan 9" PO Soutache CRE plate. Rare.  |
| 13 | Imperial 11 1/2" green Ripple vase  | 56 | Dugan 9" PO Soutache CRE ruffled bowl.   |
| 14 | Imperial 9" green Ripple squatty midsize vase. Very hard to find.                 | 57 | RARE Fenton 8 1/2" green Feather Stitch bowl. Not many around.                           |
| 15 | Imperial 6" green Ripple squatty vase   | 58 | Fenton 8 1/2" blue Feather Stitch bowl.  |
| 16 | Imperial 13 1/2" jade green Ripple vase. Not Carnival. Rare.                      | 59 | Fenton 8 1/2" dark mari. Feather Stitch bowl.  |
| 17 | Imperial 12" mari. Ripple squatty vase. 4 3/4" base                               | 60 | Fenton 9" blue Feather Stitch ICS bowl. As close to electric as you'll find!             |
| 18 | Imperial 4 1/2" mari. miniature Ripple vase with spout form top                   | 61 | Fenton 8 1/2" elec blue Persian Medallion CRE bowl.                                      |
| 19 | Imperial 5" mari. Ripple vase   | 62 | Fenton 9" dark mari. Concord ruffled bowl  |
| 20 | (2) Imperial 8" mari. Ripple vases  | 63 | Fenton 9" blue Concord ruffled bowl  |
| 21 | STUNNING BRIGHT PUMPKIN MARIGOLD HEART & FLOWER COMPOTE. BEST WE'VE SEEN!         | 64 | Fenton 10" mari. Ten Mums ftd 3/1 edge bowl. Scarce.                                     |
| 22 | RARE NWOOD GREEN HEART & FLOWER COMPOTE. NOT MANY AROUND!                         | 65 | Fenton 9 1/2" purple Ten Mums 3/1 edge bowl.   |
| 23 | Nwood IG Heart & Flower compote. Scarce   | 66 | Fenton 9" blue Ten Mums CRE bowl.  |
| 24 | Nwood AO Heart & Flower compote. Butterscotch                                     | 67 | Fenton 10" green Ten Mums ruffled bowl   |
| 25 | RARE Nwood powder blue opal Heart & Flower compote. Pastel                        | 68 | Nwood AO Fine Cut & Roses candy dish   |
| 26 | RARE Nwood powder blue opal Heart & Flower compote. Butterscotch.                 | 69 | Nwood green Fine Cut & Roses candy dish  |
| 27 | Nwood elec. purple Heart & Flower compote   | 70 | Nwood IB Fine Cut & Roses candy dish   |
| 28 | Nwood renninger blue Heart & Flower compote. Scarce.                              | 71 | Nwood white Fine Cut & Roses candy dish  |
| 29 | Nwood blue Heart & Flower compote. Odd that the stem is iridized.                 | 72 | Nwood bright Mari. Fine Cut & Roses candy dish   |
| 30 | Nwood blue opal Heart & Flower compote  | 73 | Fenton 9 1/2" mari. Dragon & Strawberry footed bowl                                      |
| 31 | Nwood frosty white Heart & Flower compote. Beautiful!                             | 74 | Fenton 8 1/2" green Dragon & Strawberry deep round bowl. Great color & pressing. Scarce. |
| 32 | Nwood dark IB Heart & Flower compote. Tough to find!                              | 75 | Fenton 8 1/2" blue Dragon & Strawberry deep round bowl. Great color & pressing. Scarce   |
| 33 | Nwood 9" dark mari. Heart & Flower plate. Beautiful! Hard to find!                | 76 | Fenton 8 1/2" mari. Dragon & Strawberry deep round bowl. Great color & pressing. Scarce  |
| 34 | Nwood 8" IG Heart & Flower ruffled bowl.  | 77 | Nwood soft IG Fruit & Flower bon bon.  |
| 35 | Nwood dark IB Heart & Flower ruffled bowl. Pretty!                                | 78 | Nwood IB Fruit & Flower bon bon.   |
| 36 | Nwood 8" purple Heart & Flower bowl   | 79 | Nwood AO Fruit & Flower bon bon.   |
| 37 | Nwood 9" pastel mari. Heart & Flower PCE bowl.                                    | 80 | Nwood elect. blasting blue Fruit & Flower bon bon.                                       |
| 38 | Nwood 9" frosty white Heart & Flower PCE bowl.                                    | 81 | Nwood elect blue w/ yellow irid Fruit & Flower bon bon                                   |
| 39 | Nwood 9" cobalt blue Heart & Flower PCE bowl. Just a bit silvery.                 | 82 | Nwood custard nutmeg Fruit & Flower bon bon. Scarce non-stippled.                        |
| 40 | Nwood 9" mari. Nippon plate. Rare!  | 83 | Nwood frosty white Fruit & Flower bon bon.   |
| 41 | Nwood 8" green Nippon bowl.   | 84 | Nwood blue Fruit & Flower bon bon.   |
| 42 | Nwood purple 8 1/2" Nippon bowl   | 85 | Nwood super dark pumpkin Fruit & Flower bon bon.   |
| 43 | Nwood 8 1/2" pumpkin mari. Nippon bowl  | 86 | Nwood mari. stippled Fruit & Flower bon bon.   |
|    |   | 87 | Nwood pastel mari. w/yellow irid. Fruit & Flower bon bon.                                |
|    |   | 88 | Nwood green Fruit & Flower bon bon.  |
|    |   | 89 | Dugan 9 1/2" PO Wishbone & Spades Tri- corner bowl. Rare.                                |



- 90 Dugan PO 10" Wishbone & Spades ruffled bowl
- 91 Dugan 6" elec. purple Wishbone & Spades plate. Really pretty!
- 92 Dugan 6" purple Wishbone & Spades ruffled bowl
- 93 Dugan 9" super elec. purple Stippled Petal ten-ruffled bowl.
- 94 Dugan 8 1/2" elec. purple Apple Blossom Twigs 10-ruffle oblong bowl
- 95 Dugan 8 1/2" elec. purple Apple Blossom Twigs low ruffled bowl
- 96 Dugan purple Grape Arbor tankard
- 96a KILLER ELECTRIC BLUE GRAPE ARBOR TANKARD. JUST A HANDFUL KNOWN. STUNNING COLOR! Been a long time since one has sold. Buy it!!!
- 97 Dugan purple Fisherman's mug
- 98 Dugan 9" elec. purple Double Stem rose bowl
- 99 Dugan purple Circle Scroll JIP hat
- 100 Nwood 9" green Poppy Show plate w/brilliant electric blue iridescence. Beautiful!
- 101 Nwood 9" electric blue Poppy Show plate Beautiful!!
- 102 Nwood 9" IG Poppy Show plate w/great pastel irid.!
- 103 Nwood 9" IB Poppy Show plate. Another winner!
- 104 Nwood 9" purple Poppy Show plate w/electric highlights
- 105 Nwood 9" dark mari. Poppy Show plate.
- 106 Nwood 9" frosty white Poppy Show plate. Beautiful!
- 107 Nwood 9" IG Poppy Show ruffled bowl. Scarce!
- 108 Nwood 8 1/2" white Poppy Show ruffled bowl
- 109 Nwood 8 1/2" purple Poppy Show ruffled bowl
- 110 Nwood elec. purple Blossom Time compote Beautiful!
- 111 Nwood green Fern compote. Very hard to find.
- 112 Stunning Nwood 8 1/2" elect. purple Wishbone footed bowl. You will all think this is blue!!!
- 113 Nwood 8 1/2" pumpkin mari. Wishbone footed bowl.
- 114 Nwood 9" green Wishbone ruffled bowl. Super pretty!
- 115 The Best Imperial electric amber Homestead chop plate. Super WOW!
- 116 Imperial 9" elect. purple Cobblestone ruffled bowl.
- 117 Imperial 9" mari. Cobblestone ruffled bowl. Harder to fine than you may think!
- 118 Imperial 9" elec. purple Grape ruffled bowl
- 119 Imperial 9" amber Open Rose plate.
- 120 Imperial 6" blasting elec. purple Scroll Embossed ruffled bowl. WOW!
- 121 Imperial elec. purple Scroll Embossed large compote. Beautiful!
- 122 Imperial bright purple Scroll Embossed compote.
- 123 Imperial purple Scroll Embossed mini Round compote
- 124 Imperial 8" elec. purple Open Rose footed bowl.
- 125 Imperial 5" elec. purple Windmill deep round bowl
- 126 Nwood blue Daisy & Drape flared vase
- 127 Nwood white Daisy & Drape flared vase
- 128 Nwood mari. Daisy & Drape vase-turned in top
- 129 Nwood AO Daisy & Drape flared vase. Scarce
- 130 Nwood purple Daisy & Drape vase-turned in top
- 131 Nwood white Daisy & Drape vase-turned in top
- 132 Nwood beautiful green Three Fruits stippled spatula footed ruffled bowl
- 133 Nwood 9" white Three Fruits spatula footed ruffled bowl. Very nice.
- 134 Nwood 9" renninger blue Three Fruits spatula footed ruffled bowl. Very nice.
- 135 Nwood 9" AO Three Fruits stippled spatula footed bowl. Super.
- 136 Nwood 9" purple Three Fruits spatula footed bowl. Great rainbow color.
- 137 Nwood 9" purple Three Fruits spatula footed bowl. Yellow irid..
- 138 Nwood blue G & C stippled banded banana boat. Blue swirls in glass. Scarce.
- 139 Nwood green G & C stippled banded banana boat. Scarce.
- 140 Nwood blue G & C stippled banded banana boat. Scarce.
- 141 Nwood pumpkin mari. G & C stippled banded banana boat.
- 142 Nwood IG G & C banana boat. Rare.
- 143 Nwood IB G & C banana boat. Rare.
- 144 Nwood frosty white G & C banana boat. Scarce.
- 145 Nwood blasting elec. purple G & C banana boat. Super
- 146 Nwood purple G & C banana boat.
- 147 Nwood elec. green G & C banana boat. Stunning
- 148 Nwood custard nutmeg G & C stippled banded banana boat.
- 149 Nwood custard w/pink stain G & C stippled banded banana boat. Scarce.
- 150 Nwood elec. blue G & C banded banana boat. Not stippled. Rare!
- 151 Nwood 14" purple Tree Trunk elephant foot vase.
- 152 Towering elec. blue 19" Tree Trunk funeral vase. One of the best you'll see!
- 153 Nwood 16" purple Tree Trunk funeral vase. w/7 3/4" opening. Very nice!
- 154 Nwood 11 1/2" purple Tree Trunk mid-size vase
- 155 Nwood 11 1/2" green Tree Trunk mid-size vase
- 156 Nwood 11 1/2" Hot mari. Tree Trunk mid-size vase
- 157 Nwood 13" mari. Tree Trunk mid-size vase w/plunger bottom. Rare!
- 158 Nwood 13" green Tree Trunk mid-size vase w/plunger bottom. Rare!
- 159 Nwood 13" purple Tree Trunk mid-size vase w/plunger bottom. Some peeling on base.
- 160 Nwood 10 1/2" AO Tree Trunk vase. Beautiful!
- 161 Nwood 9 1/2" IG Tree Trunk vase. Scarce.
- 162 Nwood 10 1/2" IB Tree Trunk vase. Scarce.
- 163 Nwood 10" elec. blue Tree Trunk vase. Scarce & beautiful!
- 164 Nwood 10 1/2" frosty white Tree Trunk vase.
- 165 Nwood 12" elec. purple Tree Trunk vase. Unusual twisted bottom.
- 166 Nwood 9 1/2" light amy. Tree Trunk vase.
- 167 Nwood 10 1/2" bright mari. Tree Trunk vase.
- 168 Nwood 10 brilliant elec. blue Tree Trunk vase.
- 169 Nwood 7" purple Tree Trunk squatty vase.
- 170 Nwood 6 3/4" purple Tree Trunk squatty vase.
- 171 Nwood 7 1/2" bright mari. Tree Trunk squatty vase.
- 172 Nwood purple Corn vase.
- 173 Nwood IG Corn vase w/stalk base



- 174 Nwood white Corn vase
- 175 Nwood 7" emerald green Fruits & Flowers card tray
- 176 Nwood 9" elec. purple Strawberry PCE bowl. Hot lot!
- 177 Nwood 9" light amy. Strawberry PCE bowl
- 178 Nwood 9" purple Strawberry plate w/BWB
- 179 Nwood 9" green Strawberry plate w/BWB
- 180 Nwood 9" pumpkin mari. Strawberry ruffled bowl. Killer color!
- 181 Nwood 9" green Strawberry PCE bowl w/BWB
- 182 Nwood 8" elec. blue Sunflower footed bowl. Beautiful color.
- 183 Nwood 8" pumpkin mari. Sunflower footed bowl. Beautiful color.
- 184 Nwood 8" green Sunflower footed bowl.
- 185 Nwood 8" purple Sunflower footed bowl.
- 186 Nwood 8" odd yellow Sunflower footed bowl. Has a very odd yellowish base glass w/beautiful pastel color.
- 187 Fenton 6" bright cherry red Holly JIP CRE hat. Red is red.
- 188 Fenton 6 1/2" cherry red Holly 2-sided hat. Beautiful.
- 189 Fenton brick red Blackberry Spray 4-side hat.
- 190 Fenton 10" radium blue Stag & Holly footed ICS bowl.
- 191 Fenton mari. 9" Stag & Holly giant rosebowl
- 192 Fenton 10" bright mari. Stag & Holly footed bowl.
- 193 Fenton 9" powder blue Stag & Holly fruit bowl. Open bubble on color.
- 194 Fenton 9" pumpkin mari. Stag & Holly footed fruit bowl.
- 195 Fenton 10 1/2" purple Stag & Holly footed ICS bowl
- 196 Fenton 10 1/2" blasting elec. blue Stag & Holly fld. ICS bowl
- 197 Fenton 10" amber Stag & Holly footed ICS bowl. Rare color.
- 198 Fenton 10" green Stag & Holly footed ruffled bowl. Scarce.
- 199 Fenton 10" blue Stag & Holly footed ruffled bowl.
- 200 Fenton 10" smoke? Stag & Holly footed ruffled bowl. Very odd.
- 201 Nwood 10" Sapphire Peacock at Urn MIC bowl. RARE color. not many around
- 202 Nwood 10" blue Peacock at Urn MIC bowl.
- 203 Nwood 10" custard Peacock at Urn MIC w/nutmeg
- 204 Nwood 10" pastel mari. Peacock at Urn stippled MIC
- 205 Nwood 10" ginger ale Peacock at Urn MIC bowl. Fully stippled
- 206 Nwood 10" elec blue Peacock at Urn MIC bowl. Here's a pretty one!
- 207 Nwood 10" green Peacock at Urn MIC bowl. Here's a tough one!!!
- 208 Nwood 10" mari Peacock at Urn MIC bowl.
- 209 Nwood 10" IG Peacock at Urn MIC bowl. always a desirable bowl
- 210 Nwood 10" IB Peacock at Urn MIC bowl. Lots of pastel irid!
- 211 Nwood 10" White Peacock at Urn MIC bowl. Another pretty pastel
- 212 Nwood 10" purple Peacock at Urn MIC bowl.
- 213 Nwood 10" Cobalt Peacock at Urn MIC bowl. DARK!!!
- 214 Nwood 10" pastel mari Peacock at Urn MIC bowl.
- 215 Nwood 10" elec purple G&C stippled ruffled bowl. Super!
- 216 Nwood 10" elec purple G&C stippled ruffled bowl.
- 217 HOT ELEC BLUE G&C stippled PCE bowl. WOW! I now these r around, but not like this!
- 218 Nwood mari 9" G&C stippled PCE bowl.
- 219 Nwood 8.5" blue G&C stippled ruffled bowl
- 220 Nwood 8" green G&C stippled ruffled bowl
- 221 Nwood 8" bright mari G&C stippled ruffled bowl Great pastel bowl!
- 222 Nwood mari G&C candle lamp. Always on the Christmas list
- 223 Nwood 8" light amy/ lav G&C ruffled bowl
- 224 Nwood 8" pastel mari G&C ruffled bowl
- 225 Nwood 8" purple G&C ruffled bowl
- 226 Nwood 8" green G&C ruffled bowl
- 227 Nwood 9" purple G&C PCE bowl
- 228 Dugan 13" purple Persian Garden chop plate. Very nice chop plate. impressive piece of glass
- 229 Dugan 10" mari Butterfly & Tulip fruit bowl w/ 2 points up. Scarce shape
- 230 Dugan 9" elec purple Flower & Frames bowl WOW!
- 231 Dugan purple 10" Victorian ruffled bowl. Scarce.
- 232 RARE Dugan 5.5" BLUE Big BASKETWEAVE vase. How many have you seen??
- 233 Dugan 5.5" white Big Basketweave vase
- 234 Dugan 9" elec purple Round Up low ICS bowl
- 235 Dugan 9" purple Dogwood Spray bowl
- 236 Dugan purple Grape Delight nut bowl
- 237 Dugan 9" elec purple Four Flowers low ruffled bowl. HOT!
- 238 Dugan 9" elec purple Lattice Heart plate. Scarce and fantastic satin irid.
- 239 Dugan 9" emerald green 4 Flowers plate NICE!
- 240 Dugan 9" purple 4 Flowers ruffled bowl. Scarce size to find.
- 241 Dugan 5" purple Cherries ruffled bowl
- 242 Dugan purple Daisy Web ruffled hat. Scarce and pretty
- 243 Camb. purple Inverted Strawberry center bowl w/ flared top.
- 244 Dugan 7" elec purple Nautilus vase
- 245 Dugan 7" elec purple Circle Scroll vase
- 246 Dugan 7" dark mari Circle Scroll vase
- 247 Nwood 9" purple Embroidered mums ruffled bowl NICE!!
- 248 Nwood 9" elec blue Embroidered mums ruffled bowl SUPER HOT!
- 249 Nwood 9" mari Embroidered Mums ruffled bowl
- 250 RED Fishnet vase w/ Grape clusters I hear this was an Olive jar... Is that true?
- 251 Nwood AO Dandelion mug. Scarce
- 252 Imp elec purple Pansy ruffled bowl
- 253 Imp elec purple Open rose low centerpiece bowl. Very sharp bowl
- 254 Mburg GREEN Seacoast pin tray
- 255 Mburg PURPLE Seacoast pin tray
- 256 Mburg PURPLE Sunflower pin tray
- 257 Mburg green Leaf & Little flowers compote



- 258 Mburg mari Leaf & Little flowers compote
- 259 RARE Mburg olive green Night Stars bon bon Not many around..
- 260 US Glass Palm Beach 5" Tri-corner bowl mari.
- 261 US Glass 6" Palm Beach banana boat shape bowl. Mari
- 262 US Glass lav. Palm Beach rose bowl w/ tri-corner top. Neat!
- 263 Fenton 8" green Dragon & Lotus spat. ft'd bowl BEAUTIFUL!!!
- 264 Fenton 8" purple Dragon & Lotus spat ft'd bowl
- 265 Nwood 9" IB Grape Leaves bowl. Haven't seen one of these for awhile
- 266 Nwood 9" elec purple Grape Leaves bowl. Real nice!
- 267 Dugan PO Folding fan compote
- 268 Nwood AO Fine Cut Roses rosebowl w/ fancy int.
- 269 Nwood elec green Fine Cut Roses rosebowl w/ plain int. WOW!
- 270 Nwood smokey amy Fine Cut Roses rosebowl w/ fancy int.
- 271 Nwood mari Fine Cut Roses rosebowl w/ plain int.
- 272 Nwood custard nutmeg Fine Cut Roses rosebowl w/ plain int.
- 273 Nwood IB Fine Cut Roses rosebowl w/ fancy int.
- 274 Nwood dark purple Fine Cut Roses rosebowl w/ plain int.
- 275 Nwood white Fine Cut Roses rosebowl w/ fancy int.
- 276 Mburg 10" purple Hanging Cherries ICS bowl Some base chipping.
- 277 fenton blue Apple Tree tumbler. NICE!
- 278 Imp green Loganberry vase. Scarce
- 279 Nwood blue G&C banana boat. NICE!
- 280 Dugan mari Heavy Iris tankard.
- 281 Imperial elec purple Diamond Lace pitcher
- 282 Fenton blue 9" Orange Tree plate
- 283 Scarce Imp DOuble Scroll candlesticks in vaseline (not CG)
- 284 Fenton blue Vintage ferner
- 285 Fenton 7" powder blue Acorn ruffled bowl silvery
- 286 4 mari punch cups for Many Fruits set
- 287 Fenton blue Persian Medallion small compote. Nice
- 288 Fenton 7" blue Leaf Chain bowl
- 289 Dugan 6" purple Cherries ruffled bowl w/ JH ext
- 290 Dugan 9" Purple Persian Garden deep bowl
- 291 Imp elec purple Embossed scroll ruffled compote- small
- 292 Fenton 5" blue OE JIP hat
- 293 Nwood 9" mari rose SHow plate. NICE
- 294 Dugan BLUE Wreath Cherries 5" berry bowl. RARE
- 295 Imp Grape Elec purple water pitcher One of the BEST you will ever see!
- 296 Nwood DARK MARI Daisy & Drape vase. BEAUTIFUL~~~ WOW!
- 297 Imp Diamond & Sunburst mari 5pc water set NICE COLOR!
- 298 Nwood 9" white Rose Show deep flared plate. Scarce & Pretty
- 299 Mburg 10" mari Hanging Cherries ICS bowl. Scarce
- 300 Mburg 10" lt amy Rosalind ruffled bowl
- 301 Dugan purple Lined Lattice vase. elec hi-lights
- 302 Nwood Sapphire Bushel Basket. VERY NICE BASKET!
- 303 Nwood 9" HOT MARI Poppy Show plate. WONDERFUL~~
- 304 Nwood 9" dark mari Poinsettia & Lattice ft'd ruffled bowl. One of the finest
- 305 Nwood 8" IB Embroidered Mums ruffled bowl. Beautiful pastel color
- 306 Fenton vaseline Peacock at Urn compote Scarce
- 307 Imp purple 474 milk pitcher. Scarce
- 308 Nwood 13.5" elec purple Tree Trunk mid-size vase. BEAUTIFUL!
- 309 Fenton BLUE Orange Tree Loving cup. Nice
- 310 Nwood blue Bushel Basket.
- 311 Nwood blue Leaf & Beads rose bowl.
- 312 Check this
- 313 Fenton GREEN Birds & Cherries card tray
- 314 Fenton green Wreath of Roses 2 handle bon bon.
- 315 Fenton hand painted Lotus 5pc water set.
- 316 Imp 18" elec purple Morning Glory funeral vase Very nice vase!!
- 317 Fenton BLUE Paneled dandelion 7pc tankard set Scarce
- 318 Imp 7" elec purple Ripple squatty vase
- 319 Imp 7" elec purple Morning Glory vase. Sharp!
- 320 Rare Nwood 9" IG Sunflower footed bowl with marigold overlay. Super tough. Is missing one point.
- 321 Very scarce Fenton 9" Concord purple plate. Very nice color!
- 322 Dugan 9" blue Fanciful plate. Scarce.
- 323 Imperial elec. purple Windmill milk pitcher. Beautiful. Does have chip under spout. See photo.
- 324 Nwood IB Drapery candy dish. Feet ok.
- 325 Nwood frosty white Drapery candy dish. Feet ok.
- 326 Nwood IG round Bushel Basket.







Jim Wroda Auctions  
2118 Magnolia Ave  
Ashville, New York 14710  
716.526.4230

PRESORTED  
FIRST CLASS MAIL  
U.S. POSTAGE  
**PAID**  
CELINA, OH  
PERMIT NO. 99

13-15\*\*\*\*\*AUTO\*\*MIXED AADC 430  
LEE MARKLEY  
PO BOX 306  
502 N BROADWAY ST  
MENTONE IN 46539-9531



**Schedule for the WWWCGA Convention Auction in Ashville, New York- Lake Chautauqua**  
**Wednesday, August 27th**

9:00 am - Dealer setup/ door open all day to everyone!  
9:00 am - Golf Tournament Evening cookout for everyone!

**Thursday, August 28th**

8:30 am - Doors Open / Free Breakfast  
10:00 am - Gordon & Jennie Bergman Carnival Glass Seminar  
Noon - Free Lunch  
2:00 pm - Tony & Mary Jo DeMichael- Gary Levi & Levay glass  
**7:00 pm - Ladies Night Out Auction**

**Friday, August 29th**

8:30 am - Doors Open / Free Breakfast  
10:00 am - Member's show & tell  
Noon: Lunch  
**2:00 pm - LeVay & Contemporary Glass Auction**  
5:30 pm - Hog Roast and Chicken BBQ with all the trimmings

**Saturday, August 30th**

8:00 am - Doors Open / Auction Preview / Free Breakfast  
**9:30 am - Carnival Glass Auction- Wonderful Bergman Collection**  
Breakfast and Lunch provided  
5:00 pm- Go out to dinner at a local establishment with whoever wants to go.

**Hotel Information- CALL NOW!!!!**

**Comfort Inn in Jamestown**

8 miles from Jim Wroda's auction facility  
Telephone: 716.664.5920  
The block is named Carnival Glass Convention the Block  
Cost: \$99.00 for King or 2 Double. Breakfast included.

**Americas Best Value Inn**

4.5 miles from Jim Wroda's auction facility. Nice hotel but dated. It's clean and several people stayed there last year.  
Telephone: 716.488.1904

No block but mention Carnival Glass Convention to get the special rates

There are other hotels in the area, which you can find by going to [www.tourchautauqua.com](http://www.tourchautauqua.com). You need to get your reservations made as it is a holiday weekend as well as the two tournaments mentioned above. For more information please visit [www.carnivalglass.org](http://www.carnivalglass.org) See you in NY!