



Lot# 5



Lot# 290



Lot# 50



Lot# 100



Lot# 61

BURNS

AUCTION SERVICE

BILL & CAROLE RICHARDS COLLECTION PART 2 CARNIVAL GLASS AUCTION

FRIDAY & SATURDAY, AUG. 1 & 2, 2014

**FRIDAY PREVIEW 3-6 P.M. AUCTION STARTING
AT 6:00 P.M. LOTS 1-125**

**SATURDAY PREVIEW 8-10 A.M. AUCTION
STARTING AT 10:00 A.M. LOTS 126 TO THE END**

at the
EMBASSY SUITES - PITTSBURGH AIRPORT
550 CHERRINGTON PARKWAY
CORAOPOLIS, PA 15108
(412) 269-9070

PA Lic. #AU005867

This first weekend of August will be our time to sell "Part 2" of the Bill & Carole Richards collection. This time we are going to be in the Steel City Area to sell a big majority of their remaining glass. The highlights will be a large number of Imperial items and more of Carole's miniatures. We sure hope you'll be able to attend.

The Embassy Suites - Pittsburgh Airport will host the event. From I-79, you will go west on I-376 towards the airport. Take exit 57 towards Moon Township and exit Thorn Run Road...motel up the hill to your right.

For reservations, call the hotel direct at 412-269-9070. There are also other hotels nearby (Super 8, Holiday Inn, etc.).

The Auction Flex absentee bidding system will be used for online bidding and will close at 9 p.m., Thursday, July 31st. You can also locate us on Auction Zip #29661.

For questions or to leave a mail bid, please contact me at:

Tom Burns – Burns Auction Service
183 Sunnyside Drive
Clermont, FL 34711
(407) 592-6552



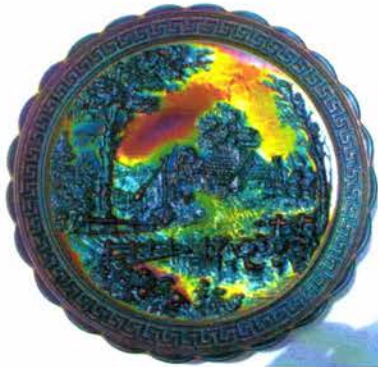
Lot# 10



Lot# 75



Lot# 236



Lot# 51



Lot# 42



Lot# 60



Lot# 300



Lot# 45



Lot# 301

- ___ 1. U.S. Glass Wild Berry Round Covered Dresser Jar – Lt. Mari. (very scarce item)
- ___ 2. 4" Westmoreland Intaglio Flower 4 sided Novelty with Wire Handle – P. Opal. (very scarce; Enam. Souvenir of Wisconsin)
- ___ 3. **U.S. GLASS FTD. INTAGLIO FLORAL ALMOND CUP – MARI. (VERY RARE AND VERY DIFFICULT ITEM; NICE)**
- ___ 4. 2" x 2" signed Imperial Iron Cross Paneled ftd. Salt – Mari. (very scarce mini item; signed and nice)
- ___ 5. **IMPERIAL FLUTE PENNY MATCH HOLDER NOVELTY – PURP. (EXTREMELY RARE AND VERY DESIRABLE; HAS AN OLD PACK OF MATCHES)**
- ___ 6. **3 ¼" TALL IMPERIAL EMBOSSED SCROLL MINI STEMMED 6 RUFFLED COMPOTE – AMYTH. (SCARCE; LIGHT BASE COLOR AND NICE IRID.)**
- ___ 7. Pair Imperial Crackle (Soda Gold) Salt and Pepper Shakers – Aqua / Mari. (very scarce pair; tough to find)
- ___ 8. Pair 2" Tall Bulbous Swirled Salt and Pepper Shakers – signed "Irice – N.Y." – Dk. Mari. (unusual; only pair I've seen; great color)
- ___ 9. 3 ½" Tall Westmoreland Orange Peel Stemmed 6 Pointed Round Sherbert – P. Opal. (scarce with super opal.; tough to find)
- ___ 10. **7 ¾" TALL U.S. GLASS PALM BEACH LG. BULBOUS VASE – PURP. (VERY RARE AND VERY DESIRABLE; RARE TO FIND IN PURP.)**
- ___ 11. 6" Tall U.S. Glass Palm Beach Whimsey Swung Vase – Mari. / Goofus (very scarce; nice)
- ___ 12. 4" Tall U.S. Glass Palm Beach Whimsey Bulbous Vase – Mari. / Goofus (very scarce; nice)
- ___ 13. 5 ¼" Diam. U.S. Glass Palm Beach Whimsey 4 sided Bowl – Mari. / Goofus (very scarce; heavy decoration)
- ___ 14. 5 ¾" Diam. U.S. Glass Palm Beach Whimsey 4 sided Bowl – Mari. / Goofus (very scarce; lighter decoration)
- ___ 15. **6 ½" DIAM. U.S. GLASS PALM BEACH WHIMSEY TRI-CORNERED BOWL – MARI. / GOOFUS (RARE SHAPE; VERY DIFFICULT TO FIND)**
- ___ 16. U.S. Glass Palm Beach Covered Butter Dish – White (selling the table set by the piece in case someone needs a part)
- ___ 17. U.S. Glass Palm Beach Covered Sugar – White (very scarce item; nice)
- ___ 18. U.S. Glass Palm Beach Spooner – White (scarce; nice)
- ___ 19. U.S. Glass Palm Beach Handled Creamer – White (scarce; nice)
- ___ 20. **U.S. GLASS PALM BEACH HANDLED WATER PITCHER – WHITE (RARE AND DESIRABLE; FROSTY AND REALLY NICE)**
- ___ 21. U.S. Glass Palm Beach Tumbler – White (scarce; nice and frosty)
- ___ 22. **6 ½" TALL U.S. GLASS PALM BEACH WHIMSEY SWUNG VASE – WHITE (VERY RARE; NICE AND FROSTY)**
- ___ 23. 3 ¾- 4" Tall U.S. Glass Palm Beach Whimsey Bulbous Vase – White (scarce; nice and frosty)
- ___ 24. (2) 4 ½" Diam. U.S. Glass Palm Beach ind. Round Berry Bowls – White (both have gooseberry int.; (1) has gold trim)
- ___ 25. 8" Tall U.S. Glass Palm Beach Whimsey Swung Vase – Pastel Mari. (rare item; but cracked at base)
- ___ 26. 4 ¼" U.S. Glass Palm Beach Whimsey Rose Bowl from ind. Berry Bowl – White (has gooseberry int. and silver trim)
- ___ 27. **5" U.S. GLASS PALM BEACH TRI-CORNERED WHIMSEY FROM IND. BERRY BOWL – MARI. (VERY RARE ITEM; HAS GOOSEBERRY INT.)**
- ___ 28. 5 ¾" U.S. Glass Palm Beach 4 sided Whimsey from ind. Berry – Mari. (scarce item; has gooseberry int.)
- ___ 29. 3" Tall U.S. Glass Palm Beach Whimsey Rose Bowl – Mari. / Goofus (very scarce; nice decoration)
- ___ 30. **7" X 4" U.S. GLASS PALM BEACH WHIMSEY 2 SIDED BANANA BOAT – MARI. / GOOFUS (RARE AND UNUSUAL SHAPE; NICE COLOR AND DECOR.)**
- ___ 31. **5 ¼" X 3 ½" U.S. GLASS PALM BEACH WHIMSEY 2 SIDED BANANA BOAT – HONEY AMBER (WHATTA CUTIE! GREAT COLOR AND SHAPE)**
- ___ 32. 7" U.S. Glass Palm Beach Tri-Cornered Whimsey – Mari. (very scarce; nice color and irid.)
- ___ 33. 4 ½" U.S. Glass Palm Beach ind. Round Berry Bowl – Honey Amber (nice color)
- ___ 34. U.S. Glass Palm Beach Handled Creamer – Honey Amber (scarce part)
- ___ 35. U.S. Glass Cosmos and Cane Covered Butter Dish – White (very scarce; nice and frosty)
- ___ 36. 4 ¼" U.S. Glass Cosmos and Cane ind. Berry Bowl – White (scarce; frosty)
- ___ 37. **FENTON ORANGE TREE STANDARD FLARED MUG – RED / AMBERINA (RARE; NICE SATINY FINISH)**
- ___ 38. **FENTON ORANGE TREE STANDARD FLARED MUG – GREEN (VERY RARE; GREAT COLOR AND IRID.)**
- ___ 39. Fenton Orange Tree Standard Flared Mug – Teal (scarce base color)
- ___ 40. **FENTON ORANGE TREE STANDARD FLARED MUG – WHITE (EXTREMELY RARE ITEM; VERY DIFFICULT TO FIND)**
- ___ 41. Fenton Orange Tree Standard Flared Mug – Amber (scarce base color)
- ___ 42. **FENTON ORANGE TREE HANDLED SHAVING MUG – RED (RARE AND VERY DESIRABLE; GREAT COLOR AND SATINY FINISH)**
- ___ 43. Fenton Orange Tree Handled Shaving Mug – non-iridized Ruby Red (very rare Fenton product)
- ___ 44. Fenton Orange Tree Handled Shaving Mug – Amber (very rare color for this size)
- ___ 45. **FENTON ORANGE TREE HANDLED SHAVING MUG GREEN (EXTREMELY RARE AND TOUGH TO FIND; REALLY NICE)**
- ___ 46. **FENTON ORANGE TREE HANDLED SHAVING MUG – MARI. / ODD LIME GREEN (REALLY NEAT BASE COLOR; VERY NICE!)**
- ___ 47. Fenton Orange Tree Handled Shaving Mug – Mari. / Aqua (very scarce in this color)
- ___ 48. Fenton Orange Tree Handled Shaving Mug – Blue (satiny finish)
- ___ 49. 9 ¼" x 6 ½" Imperial Pansy Flat Oval Dresser Tray – Amber (rare shape; great color; nice)
- ___ 50. **10 3/8" IMPERIAL HOMESTEAD FLAT CHOP PLATE; SIGNED NUART – EMERALD GREEN (EXTREMELY RARE AND VERY DESIRABLE; SUPER)**
- ___ 51. **10 ¼" IMPERIAL HOMESTEAD FLAT CHOP PLATE; NOT SIGNED – PURP. (EXCELLENT COLOR AND DETAIL; SUPER EXAMPLE)**

52. 10 3/8" IMPERIAL HOMESTEAD FLAT CHOP PLATE; NOT SIGNED – AMBER (ANOTHER VERY DESIRABLE ITEM WITH GREAT COLOR AND IRID.)
53. 10 3/8" IMPERIAL HOMESTEAD FLAT CHOP PLATE; NOT SIGNED – WHITE (IRIS ICE) (VERY RARE; REALLY FROSTY WITH A STRETCH EFFECT)
54. 10 3/8" IMPERIAL HOMESTEAD FLAT CHOP PLATE; NOT SIGNED – HONEY AMBER (ANOTHER RARE COLOR WITH GREAT IRID.)
55. 10 3/8" IMPERIAL HOMESTEAD FLAT CHOP PLATE; SIGNED NUART – PASTEL MARI. (SIGNED WITH A BRIGHT FINISH; REALLY NICE)
56. Imperial Grape Water Carafe – Amyth. (really nice; a lighter base color)
57. Imperial Grape Water Carafe – Purp. (great irid.)
58. Imperial Grape Water Carafe – Green (an above average example; nice)
59. Imperial Grape Water Carafe – Dk. Mari. (super example; one of the darker examples I've seen)
60. 10 1/2" IMPERIAL CHRYSANTHEMUM CHOP PLATE – PURP. (VERY RARE AND VERY DESIRABLE; GREAT COLOR AND IRID.)
61. 10 1/2" IMPERIAL CHRYSANTHEMUM CHOP PLATE – SMOKE (ANOTHER VERY RARE EXAMPLE; GREAT COLOR WITH A DARK STRETCHY FINISH)
62. 7 1/4" Tall Imperial Mini. Morning Glory Swung Vase – Amber (very scarce base color)
63. 6" Tall Imperial Mini. Morning Glory Swung Vase – Purp. (great color and irid.)
64. 5" Tall x 3 7/8" Diam. Imperial Mini. Morning Glory Swung Vase – Green (scarce with a nice flare)
65. 11 1/4" IMPERIAL HEAVY GRAPE FLAT CHOP PLATE – SMOKE (VERY DIFFICULT ITEM TO LOCATE; GREAT STRETCH EFFECT)
66. 11" IMPERIAL HEAVY GRAPE FLAT CHOP PLATE – PURP. (VERY SCARCE WITH TYPICAL GREAT IRID.)
67. 11 1/4" Imperial Heavy Grape Flat Chop Plate – Amber (another very scarce item with nice base color)
68. 8 1/2" Imperial Heavy Grape Flat Plate – Amber (super irid.; bright with great base color)
69. 5 – 5 1/4" TALL IMPERIAL 16 paneled SHADE – RED (VERY RARE; VERY DESIRABLE)
70. 9 3/4" IMPERIAL HATTIE LG. 8 RUFFLED LOW BOWL – AMBER (RARE BOWL IN THIS SHAPE; GREAT COLOR!)
71. 9 1/4" Imperial Lustre Rose 3 ftd. Centerpiece Bowl – Dk. Amber (scarce color; scarce shape)
72. Imperial Lustre Rose 3 ftd. Centerpiece Bowl – Amber (excellent example; super color and irid.)
73. Imperial Lustre Rose Covered Butter Dish – Amber (scarce item; lid is dark and has chips on finial)
74. 6 1/2" Imperial Grape Flat Plate – Amber (very scarce in this color)
75. IMPERIAL GRAPE 7 PC. WATER SET – AMBER (THIS HAS TO BE ONE OF THE MORE IMPRESSIVE IMPERIAL SETS I'VE SEEN; SUPER!)
76. IMPERIAL GRAPE 7 PC. WATER SET – PURP. (ANOTHER SUPER LOOKIN SET; PITCHER IS GREAT!)
77. IMPERIAL GRAPE 8 PC. PUNCH SET – AMBER (VERY RARE IN THIS COLOR; VERY TOUGH TO FIND; ONE CUP MAY BE DAMAGED)
78. IMPERIAL THUMBPRINT AND OVALS VASE – PURP. (RARE; SUPER EXAMPLE)
79. IMPERIAL THUMBPRINT AND OVALS VASE – DK. MARI. (VERY SCARCE; SUPER NICE ITEM)
80. 15 3/4" TALL X 4 5/8" BASE X 8 3/4" DIAM. IMPERIAL RIPPLE SWUNG FUNERAL VASE – AMBER (RARE COLOR IN A RARE SIZE; NICE AND BIG!)
81. 13" Tall x 3 3/8" Base Imperial Ripple Swung Vase – Amber (nice color)
82. IMPERIAL CORN BOTTLE – SMOKE (VERY SCARCE; VERY DESIRABLE)
83. IMPERIAL CORN BOTTLE – GREEN (VERY SCARCE; VERY DESIRABLE)
84. IMPERIAL CORN BOTTLE – DK. MARI. (VERY SCARCE; VERY DESIRABLE)
85. IMPERIAL LUSTRE ROSE 7 PC. WATER SET – PURP. (ANOTHER SUPER IMPERIAL SET; GREAT COLOR AND IRID.)
86. Imperial Lustre Rose Lg. 6 Ruffled 3 ftd. Fruit Bowl – Purp. (rare item in this color; inside center has a lack of irid.)
87. Imperial Lustre Rose Lg. 6 Ruffled 3 ftd. Fruit Bowl – Lt. Amber (scarce color)
88. IMPERIAL LUSTRE ROSE 5 PC. WATER SET – NON-IRIDIZED AMBERINA (ACTUALLY QUITE AN EXTREMELY RARE SET IN THIS COLOR!)
89. Imperial Lustre Rose 7 pc. Water Set – Crystal Green / Gold Trim (another pretty tough set)
90. IMPERIAL LUSTRE ROSE LG. 6 RUFFLED 3 FTD. FRUIT BOWL – SIGNED WITH IRON CROSS – MARI. (HEY! ALL YOU EXPERTS!! HOW MANY OF THESE HAVE YOU SEEN??)
91. Imperial Lustre Rose Lg. 6 Ruffled 3 ftd. Fruit Bowl – Amber (scarce color)
92. Imperial Lustre Rose Lg. 6 Ruffled 3 ftd. Fruit Bowl – Smoke (scarce; nice)
93. Imperial Lustre Rose Lg. Flared 3 ftd. Fruit Bowl – Smoke (really nice)
94. 9" Imperial Open Rose Flat Plate – Amber (scarce; nice)
95. 9 1/4" Imperial Open Rose Flat Plate – Purp. (flat and rare! Has a small chip on one of the roses)
96. IMPERIAL LOGANBERRY VASE – AMBER (VERY SCARCE COLOR; TOUGH TO FIND)
97. IMPERIAL BROKEN ARCHES 8 PC. ROUND PUNCH SET – PURP. (VERY RARE AND VERY DESIRABLE; GREAT SET!!)
98. IMPERIAL FIELDFLOWER HANDLED WATER PITCHER – AMYTH. (VERY SCARCE; NICE)
99. Imperial Fieldflower Handled Water Pitcher – Mari. (nice color and detail)
100. IMPERIAL TIGER LILY 7 PC. WATER SET – PURP. (ANOTHER!!!....SUPER SET; PROBABLY THE BEST!!)
101. Imperial Flute Toothpick Holder – Lt. Green / Mari. (does it glow??? I don't know...)
102. Imperial Flute Toothpick Holder – Purp. (nice color)
103. Imperial Flute Toothpick Holder – Green (nice color)
104. Imperial Flute Toothpick Holder – Mari. (a really tough and rugged item... takes a beating and keeps on ticking)
105. IMPERIAL FLUTE 6 PC. WATER SET – PURP. (ANOTHER VERY RARE SET!!)

- ___ 106. Imperial Flute Breakfast Open Sugar and Creamer – Amber (rare color for this pair!)
- ___ 107. Imperial Embossed Scroll Stemmed 8 Ruffled Compote – Amber (scarce color)
- ___ 108. 9 ¼" Tall x 3" Base Imperial Ripple Swung Vase – Amber (nice color)
- ___ 109. 13 5/8" Tall x 4 ¾" Base x 7 ½" Diam. Imperial Ripple Swung Vase – Mari. (great size; nice color and irid.)
- ___ 110. **15 5/8" TALL X 5 3/8" BASE X 7 ½" DIAM. IMPERIAL STRETCH INT. PANEL SWUNG FUNERAL VASE – WHITE (VERY RARE AND VERY DESIRABLE; PERFECT AND NICE)**
- ___ 111. **3 ½ - 3 ¾" TALL IMPERIAL JEWELS TURNED IN ROSE BOWL – WHITE (RARE; SIGNED WITH IRON CROSS; NICE!!)**
- ___ 112. **PAIR 9 ¼" TALL IMPERIAL STRETCH CHESTERFIELD CANDLESTICKS – RED / AMBERINA (EXTREMELY RARE PAIR; ONE IS JUST A TAD TALLER)**
- ___ 113. Imperial Windmill 7 pc. Small Size Water Set – Purp. (rare set; chip on collar base of pitcher; tumblers go from great to average)
- ___ 114. Imperial Little Barrel Novelty – Green (very scarce and very desirable)
- ___ 115. **PAIR IMPERIAL SIX SIDED CANDLESTICKS – PURP. (RARE AND VERY DESIRABLE; TOUGH TO FIND!!)**
- ___ 116. **PAIR IMPERIAL SIX SIDED CANDLESTICKS – ODD MARI. (ANOTHER RARE PAIR; WELL MATCHED)**
- ___ 117. **PAIR IMPERIAL SIX SIDED CANDLESTICKS – MARI. (ANOTHER RARE PAIR; WELL MATCHED)**
- ___ 118. Pair Imperial Six Sided Candlesticks – Green (rare set; one has a large chip near base)
- ___ 119. Imperial Six Sided Candlestick – Amber (very rare single item; nice color)
- ___ 120. **IMPERIAL WINDMILL HANDLED MILK PITCHER – PURP. (VERY RARE AND VERY DESIRABLE; SUPER COLOR AND IRID.)**
- ___ 121. Imperial Windmill Handled Milk Pitcher – Green (an odd limey green base color; different)
- ___ 122. Imperial Windmill Handled Milk Pitcher – Dk. Mari. (probably one of the nicest I've seen)
- ___ 123. Imperial Diamond Lace Water Pitcher – Purp. (scarce; really nice color and irid.)
- ___ 124. Imperial Soda Gold Water Pitcher and (1) Tumbler – Smoke (scarce with super irid.)
- ___ 125. **IMPERIAL POINSETTIA HANDLED MILK PITCHER – SMOKE (VERY SCARCE AND VERY DESIRABLE; GREAT IRID.)**
- START OF SECOND SESSION**
- ___ 126. Imperial 474 Handled Milk Pitcher – Green (scarce; tough to find)
- ___ 127. Imperial 474 6 pc. Large Size Water Set – Dk. Mari. (nice color and irid.)
- ___ 128. **IMPERIAL ROBIN HANDLED MUG – SMOKE (EXTREMELY RARE ITEM TO FIND; NOT MANY KNOWN)**
- ___ 129. Imperial Robin Handled Mug – Custard (another very rare item in this color)
- ___ 130. **N G & C STIPPLED BANDED LARGE SIZE 3 FTD. FRUIT BOWL – CUSTARD / BLUE STAIN (RARE AND EXTREMELY DESIRABLE; SUPER EXAMPLE)**
- ___ 131. N G & C Stippled Banded Large size 3 ftd. Fruit Bowl – Custard / Nutmeg (rare size to find; nice nutmeg)
- ___ 132. N G & C Stippled Small size 3 ftd. Fruit Bowl – Custard / Nutmeg (very scarce item; nice nutmeg)
- ___ 133. N G & C Handled Creamer for Table Set – Custard / Nutmeg (scarce part)
- ___ 134. N G & C Stemmed Round Sherbert – Custard / Nutmeg (nice nutmeg)
- ___ 135. **N G & C BANDED 3 FTD. CENTERPIECE BOWL – CUSTARD / PEARLIZED (RARE AND VERY DESIRABLE ITEM; PEARLIZED AND REALLY NICE)**
- ___ 136. N G & C Covered Humidor – Pearlized Custard / Nutmeg (very rare and desirable; prongs inside lid are gone)
- ___ 137. N Intaglio Lg. Round ftd. Master Berry Bowl – Custard / Green Stain (scarce; nice decor.)
- ___ 138. N Intaglio Salt Shaker – Custard / Green Stain (scarce)
- ___ 139. N Grape Arbor 6 Ruffled Hat from Tumbler – Custard / Nutmeg (nice nutmeg)
- ___ 140. **N GRAPE ARBOR TANKARD WATER PITCHER – CUSTARD / PINK STAIN (VERY RARE; DAMAGED AT TOP OF HANDLE AND CYLINDER)**
- ___ 141. N Everglades Lg. Oblong Master Berry Bowl – Custard / Decorated (super example)
- ___ 142. N Beaded Cable ftd. Ruffled Rose Bowl – Custard / Nutmeg (nice decoration)
- ___ 143. **N'WOOD ARGONAUT SHELL HANDLED WATER PITCHER – CUSTARD / DECOR. (VERY SCARCE AND DESIRABLE; SIGNED IN SCRIPT)**
- ___ 145. **N SINGING BIRD STEMMED SHERBERT – CUSTARD / NUTMEG (VERY RARE ITEM TO FIND IN ANY COLOR; NICE NUTMEG)**
- ___ 146. N Fine Cut and Roses ftd. Rose Bowl – Custard / Nutmeg (nice example)
- ___ 147. N Louis XV 7 pc. Ftd. Water Set – Custard / Gold (nice set; pretty good gold)
- ___ 148. N Louis XV 6 pc. Ftd. Table Set – Custard / Gold (complete set; pretty average gold)
- ___ 149. N Louis XV 7 pc. Ftd. Berry Set – Custard / Gold (actually really good gold; scarce)
- ___ 150. **N'WOOD CHRYSANTHEMUM SPRIG LG. CELERY VASE – CUSTARD / DECOR. (VERY RARE ITEM; REALLY NICE AND SIGNED IN SCRIPT)**
- ___ 151. N'wood Chrysanthemum Sprig Lg. Oval Master Berry Bowl – Blue Custard (rare and very desirable color, tough to find)
- ___ 152. N'wood Chrysanthemum Sprig 6 pc. Table Set – Custard / Decor. (very scarce set; pretty nice)
- ___ 153. N'wood Chrysanthemum Stemmed Jelly Compote – Custard / Decor. (pretty good decor.)
- ___ 154. N Geneva ftd. Round Master Berry Bowl – Custard / Decor. (scarce; but cracked)
- ___ 155. **N GENEVA FTD. 7 PC WATER SET– CUSTARD / DECOR. (VERY SCARCE AND DESIRABLE SET; NICE DECOR.)**
- ___ 156. **N GENEVA FTD. 6 PC. TABLE SET – CUSTARD / DECOR. (RARE SET; COMPLETE AND NICE)**
- ___ 157. N Geneva ftd. Squatty Compote – Custard / Decor. (nice decor.)

- ___ 158. N Geneva ftd. Toothpick Holder – Custard / Decor. (scarce; cracked)
- ___ 159. **N GENEVA LG. OBLONG FTD. BANANA BOAT – CUSTARD / GREEN STAIN (SUPER DECORATION; REALLY NICE)**
- ___ 160. **TARENTUM GLASS COMPANY VICTORIA 6 PC. TABLE SET – GREEN OPAQUE / DECOR. (RARE ITEM; REALLY NICE DECOR.)**
- ___ 161. **TARENTUM GLASS COMPANY VICTORIA CELERY VASE – GREEN OPAQUE / DECOR. (RARE ITEM; REALLY NICE DECOR.)**
- ___ 162. Tarentum Glass Company Victoria Tumbler – Green Opaque / Decor. (very scarce)
- ___ 163. U.S. Glass Vermont 6 pc. Table Set – Custard with Blue and Green Stain (mixed colors but makes for a rare set)
- ___ 164. Krystol Diamond Peg Covered Sugar Bowl – Custard / Decor. (scarce)
- ___ 165. **N FAN FTD. HANDLED WATER PITCHER – CUSTARD / GOLD (VERY SCARCE)**
- ___ 166. Maker (?) Straw Hat Novelty – Custard / Goofus (very unusual novelty; small chip or 2)
- ___ 167. **7 ¾" FENTON PEACOCK AND DAHLIA FLAT PLATE – CUSTARD / GOOFUS ON DAHLIA (VERY UNUSUAL DECORATION)**
- ___ 168. 9" Fenton Swallows 8 Ruffled Bowl – Moonstone / Goofus (scarce pattern)
- ___ 169. Fenton Banded Blackberry Crimped Edge J.I.P. Hat – Custard / Green Stain (very scarce pattern; nice stain)
- ___ 170. **6 5/8" FENTON HORSEHEAD MEDALLION DEEP ROUND BOWL – CUSTARD / PINK STAIN (VERY UNUSUAL WITH ALL OVER PINK STAIN; NEAT)**
- ___ 171. Fenton Lotus and Grape 4 sided 2 Handled Bon Bon – Custard / Pink Stain (nice decoration)
- ___ 172. Fenton Lotus and Grape 2 sided 2 Handled Card Tray – Custard / Green Stain (nice decoration)
- ___ 173. 6 ¼" Tall Fenton Sailboats Stemmed 6 Ruffled Crimped Edge Compote – Custard / Pink Stain (nice; small chip on base)
- ___ 174. 5 ¼" Tall Fenton Sailboats Stemmed Flattened Crimped Edge Compote – Custard / Green Stain (very scarce; nice shape)
- ___ 175. **FENTON PERSIAN MEDALLION HAIR RECEIVER – CUSTARD / GREEN STAIN (UNUSUAL ITEM; NICE STAIN)**
- ___ 176. 7 ¾" Tall Fenton Butterfly and Berry Swung Vase – Custard / Green Stain (scarce)
- ___ 177. 8 ½" Tall Fenton Butterfly and Berry Swung Vase – Custard / Pink Stain (scarce)
- ___ 178. 8 ¾" Tall N Drapery Variant Swung Vase – Custard / Nutmeg (nice decoration)
- ___ 179. 7 ½" N G & C 6 Ruffled Bowl with Basketweave Ext. – Custard / Nutmeg
- ___ 180. **N G & C STIPPLED BANDED FTD. BANANA BOAT – CUSTARD / PINK STAIN (VERY RARE AND VERY DESIRABLE; SUPER DECORATED ITEM!)**
- ___ 181. **N G & C STIPPLED BANDED FTD. BANANA BOAT – PEARLIZED CUSTARD / NUTMEG (VERY SCARCE AND VERY DESIRABLE)**
- ___ 182. **N G & C STIPPLED BANDED FTD. BANANA BOAT – CUSTARD WITH RED AND GREEN DECOR. (REALLY UNUSUAL DECOR.; NICE)**
- ___ 183. N G & C Stippled Banded ftd. Banana Boat – Custard / Goofus Trim (one of these next 2 may have a hairline)
- ___ 184. N G & C Stippled Banded ftd. Banana Boat – Custard / Nutmeg (nice nutmeg)
- ___ 185. **N G & C STIPPLED BANDED FTD. BANANA BOAT – GREEN (ABSOLUTELY FANTASTIC COLOR AND IRID.; EXTREMELY RARE IN THIS COLOR)**
- ___ 186. N G & C ftd. Banana Boat – Green (very scarce and has nice color and irid.)
- ___ 187. **N G & C STIPPLED BANDED BANANA BOAT – BLUE (RARE AND ATTRACTIVE ITEM; REALLY NICE)**
- ___ 188. N G & C Banded Banana Boat – Blue (rare color; nice irid.)
- ___ 189. N G & C ftd. Banana Boat – Purp. (nice color; scarce)
- ___ 190. **N G & C FTD. BANANA BOAT – ICE GREEN (RARE & VERY DESIRABLE; SUPER COLOR AND SUPER IRID.)**
- ___ 191. **N G & C FTD. BANANA BOAT – ICE BLUE (RARE AND DESIRABLE; NICE COLOR AND IRID.)**
- ___ 192. **N G & C FTD. BANANA BOAT – WHITE (SUPER COLOR AND SUPER IRID.; GREAT EXAMPLE)**
- ___ 193. N G & C Stippled Banded Banana Boat – Dk. Mari. (super color and super irid.; really nice)
- ___ 194. N G & C ftd. Banana Boat – Dk. Mari. (nice color and irid.)
- ___ 195. **N G & C 14 PC. MASTER PUNCH BOWL SET – DK. MARI. (RARE AND DESIRABLE; REALLY NICE COLOR AND IRID. – TOUGH TO FIND!!)**
- ___ 196. N G & C ftd. Banana Boat – Crystal / Decor. (scarce; unusual)
- ___ 197. **N G & C FTD. HATPIN HOLDER – PURP. (REALLY NICE ITEM; HAS ORIGINAL NORTHWOOD LABEL – WOW!!)**
- ___ 198. N G & C ftd. Hatpin Holder – Green (scarce; nice)
- ___ 199. N G & C ftd. Hatpin Holder – Dk. Mari. (really nice color and irid.)
- ___ 200. **N G & C FTD. FRUIT BOWL WITH STRAIGHT UP POINTS – ICE GREEN (RARE AND VERY DESIRABLE; GREAT COLOR AND IRID.)**
- ___ 201. **N G & C FTD. FRUIT BOWL WITH STRAIGHT UP POINTS – WHITE (ANOTHER VERY SCARCE ITEM WITH SUPER IRID.)**
- ___ 202. N G & C ftd. Fruit Bowl with Straight Up Points – Dk. Mari. (scarce with excellent color and irid.)
- ___ 203. N G & C Covered Sweetmeat Compote – Purp. (really nice color and irid.)
- ___ 204. **N G & C 7 PC. WATER SET – GREEN (QUITE RARE AND THIS EXAMPLE IS REALLY NICE)**
- ___ 205. **N G & C LARGE FTD. RUFFLED FRUIT BOWL – GREEN (RARE COLOR FOR THIS SIZE; TOUGH TO FIND)**
- ___ 206. N G & C Small ftd. Ruffled Fruit Bowl – Green (scarce color)
- ___ 207. **N G & C 2 PC. CANDLE LAMP – GREEN (VERY SCARCE & VERY DESIRABLE; NICE SATINY FINISH)**
- ___ 208. **N G & C 2 PC. CANDLE LAMP – AMYTH. (ANOTHER VERY SCARCE ITEM; REALLY NICE EXAMPLE)**
- ___ 209. N G & C 2 pc. Candle Lamp – Mari. (very scarce; stick is a bit darker)

210. **N G & C COVERED HUMIDOR – DK. MARI. (RARE AND DESIRABLE; PRONGS ARE GOOD; REALLY NICE)**
211. **N G & C COVERED CRACKER JAR – DK. MARI. (ONE OF THE BETTER EXAMPLES I'VE SEEN!!)**
212. N G & C Large Ruffled ftd. Fruit Bowl – Purp. (very scarce; has blue highlights)
213. N G & C Large Ruffled ftd. Fruit Bowl – Dk. Mari. (super color and irid.)
214. N G & C Tumbler – Amyth.
215. **N SINGING BIRDS HANDLED MUG – AQUA OPAL. (RARE & DESIRABLE; LIGHT COLOR & OPAL.; NICE)**
216. N Singing Birds Handled Mug – Horehound (rare base color; one side is super)
217. **N SINGING BIRDS STIPPLED HANDLED MUG – ODD GREEN (VERY ODD SHADE OF GREEN; NICE ITEM)**
218. N Dandelion Handled Mug – Aqua Opal. (light opal.; rare base color)
219. N Dandelion Handled Mug – Green (rare color with average irid.)
220. **N IVY TOWN PUMP – PURP. (RARE AND VERY DESIRABLE; NICE COLOR AND IRID.)**
221. N Ivy Town Pump – Green (rare but has no spout)
222. N Peacock at the Fountain Tumbler – Blue (nice irid.)
223. N Peacock at the Fountain Tumbler – Lt. Amyth.
224. N Peacock at the Fountain Tumbler – Purp.
225. **N PEACOCK AT THE URN LG. ICE CREAM BOWL – CUSTARD / NUTMEG (SUPER EXAMPLE; EXCELLENT NUTMEG)**
226. 9 1/8" N Strawberry Plate with Basketweave Ext. – Green (satiny finish)
227. 7" Tall Thin Rib Standard Swung Vase – Green (nice color and irid.)
228. N Springtime Tumbler – Green (scarce; tough to find)
229. N Rose Show 8 Ruffled Bowl – Ice Blue (nice color; chip on edge)
230. **N GRAPE ARBOR TANKARD WATER PITCHER – ICE BLUE (RARE; FROSTY FINISH & DESIRABLE; NICE)**
231. (2) N Grape Arbor Tumblers – Ice Blue (selling 2 times the money; nice examples)
232. **N GRAPE ARBOR 7 PC. TANKARD WATER SET – WHITE (VERY SCARCE; FROSTY AND VERY DESIRABLE; NICE)**
233. N Grape Arbor 7 pc. Tankard Water Set – Amyth. (scarce; sorta light color; nice irid.)
234. N Grape Arbor 7 pc. Tankard Water Set – Mari. (scarce; nice dark color and irid.)
235. **19 1/2" TALL X 5 1/4" BASE X 8" FLARE N TREE TRUNK SWUNG FUNERAL VASE – WHITE (RARE AND VERY DESIRABLE; HAS A SMALL INTERIOR BRUISE)**
236. **19 1/2" TALL X 5 1/4" BASE X 8" FLARE N TREE TRUNK SWUNG FUNERAL VASE – PURP. (RARE AND VERY DESIRABLE; NICE BRIGHT IRID.)**
237. 13" Tall x 5 1/4" Base x 8" Flare N Tree Trunk Squatty Elephant's Foot Funeral Vase – Purp. (rare example but cracked; nice satiny irid.)
238. 19 3/4" Tall x 5 1/4" Base x 7 1/2" Flare N Tree Trunk Swung Funeral Vase – Blue (really attractive item; has 1 1/2" chip on base)
239. 18 3/4" Tall x 5 1/4" Base x 8 1/2" Flare N Tree Trunk Swung Funeral Vase – Green (a piece has been re-glued on top edge; one of the best I've seen)
240. **N ORIENTAL POPPY TANKARD PITCHER AND (1) TUMBLER – WHITE (RARE AND VERY DESIRABLE; FROSTY AND REALLY NICE!!)**
241. **N ORIENTAL POPPY 7 PC. TANKARD WATER SET – GREEN (RARE AND DESIRABLE COLOR; NICE SET)**
242. N Oriental Poppy 7 pc. Tankard Water Set – Purp. (very scarce and always desirable)
243. N Oriental Poppy 7 pc. Tankard Water Set – Dk. Mari. (great color and irid.; damaged at handle)
244. N Oriental Poppy 7 pc. Tankard Water Set – Crystal Green / Gold (scarce set)
245. N Oriental Poppy 7 pc. Tankard Water Set – Crystal Blue/Gold (scarce color; damaged at handle)
246. **N G & C STIPPLED BOWL WITH P.C.E. AND RIBBED EXT. – ICE BLUE (RARE AND DESIRABLE; NICE COLOR AND IRID.)**
247. **N GROUND CHERRIES ENAMELED 7 PC. WATER SET – BLUE / DECOR. (RARE AND VERY DESIRABLE; TOUGH TO FIND A COMPLETE SET)**
248. **N APPLE BLOSSOM ENAMELED 6 PC. TABLE SET – BLUE / DECOR. (EXTREMELY RARE SET; COMPLETE AND NICE; MAY HAVE A COUPLE OF PINHEADS)**
249. N Apple Blossom Enameled ind. Berry Bowl – Blue / Decor. (scarce item)
250. **N "VINING GRAPES" ENAMELED COVERED SUGAR BOWL – BLUE / DECOR. (I DO NOT RECALL EVER SEEING THIS ITEM; REALLY NEAT!)**
251. Dugan Quill Handled Water Pitcher – Dk. Mari. (rare, desirable; check at handle)
252. Dugan Nautilus Novelty Open Sugar – Purp. (excellent example; signed in Northwood in script)
253. Dugan Peacock at the Fountain Tumbler – Blue (nice)
254. 8 3/4" Imperial Grape 8 Ruffled Bowl – Amber (very scarce base color)
255. **IMPERIAL GRAPE 5 PC. WATER SET – SMOKE (VERY SCARCE SET IN THIS COLOR; NICE COLOR & IRID.)**
256. 10 1/4" Imperial Heavy Grape Lg. Round Master Berry Bowl – Smoke (super example; nice size and irid.)
257. 8 1/2" Imperial Heavy Grape Flat Plate – Amber (very scarce; nice irid.)
258. Imperial Heavy Grape one Handled Nappy – Amber (scarce color)
259. Imperial Pansy Breakfast Open Sugar and Creamer – Amber (nice pair; scarce)
260. **18 5/8" TALL IMPERIAL MORNING GLORY SWUNG FUNERAL VASE – AMBER (RARE AND EXTREMELY DESIRABLE; SUPER ITEM!)**
261. 4 1/2" Tall Imperial Mini. Morning Glory Swung Vase – Mari. (whatta cutie; hardly has a flare; nice!)
262. 9 1/2" Tall x 2 1/2" Base Imperial Ripple Small Swung Vase – Dk. Amber (very unusual color; very different)
263. **11 3/8" TALL IMPERIAL BEADED BULLSEYE SWUNG VASE – AMBER (VERY RARE BASE COLOR FOR THIS ITEM; REALLY NICE)**

264. **IMPERIAL LUSTRE ROSE TUMBLER WITH ENAM. DECOR. – MARI. (RARE ITEM WITH THIS ENAM. DECOR.)**
265. **7 ½" TALL X 4 ¼" BASE IMPERIAL ZIPPER LOOP KEROSENE LAMP – MARI. (RARE COLOR; RARE ITEM; NICE EXAMPLE)**
266. **IMPERIAL HEAVY GRAPE HANDLED PUNCH CUP – PURP. (RARE ITEM; NICE)**
267. Imperial 474 Handled Punch Cup – Emerald Green (very scarce and nice)
268. 9" Fenton Cherry Chain I.C. Shaped Bowl – White (super irid.; scarce)
269. 9" Fenton Ribbon Tie low Ruffled Plate with 3 in 1 Edge – Amyth. (scarce)
270. **9 ¼" FENTON CAPTIVE ROSE FLARED PLATE – GREEN (ABSOLUTELY SUPER IRID.; FANTASTIC EXAMPLE; NICE!!)**
271. **9 ¼" FENTON CAPTIVE ROSE FLARED PLATE – AMYTH. (RARE AND VERY DESIRABLE; SUPER IRID.; GREAT ITEM)**
272. 9 3/8" Fenton Captive Rose Flared Plate – Blue (scarce; nice color and irid.)
273. **9 ½" FENTON CAPTIVE ROSE FLARED PLATE – DK. MARI. (VERY SCARCE; NICE COLOR AND IRID.)**
274. Fenton 2 Row Open Edge Basketweave 2 sided Hat with Miller's Furniture Adv. – Mari. (nice color)
275. **FENTON BLACKBERRY LG. SIZE 2 ROW 4 SIDED OPEN EDGE HAT – RED (VERY DESIRABLE; NICE COLOR AND IRID.)**
276. Fenton 2 Row Open Edge Basketweave J.I.P. Hat – Red (really nice color)
277. Fenton 2 Row Open Edge Basketweave J.I.P. Hat – Dk. Amber (very scarce color)
278. 5 3/8" Fenton Sailboats Round Flared Sauce – Dk. Amber (very scarce color)
279. Fenton Holly 6 Ruffled Hat Shape – Dk. Amber (nice example; scarce)
280. **7 ¾" FENTON PEACOCK AND GRAPE 8 RUFFLED SPATULA FTD. BOWL – RED (RARE AND DESIRABLE; PRETTY DARN NICE EXAMPLE)**
281. **7" FENTON ACORN I.C. SHAPED BOWL – RED (EXCELLENT RED EXAMPLE)**
282. **FENTON BLACKBERRY SPRAY CRIMPED EDGE J.I.P. HAT – RED (ANOTHER NICE RED ITEM; NICE AND AFFORDABLE)**
283. **FENTON STIPPLED RAYS FTD. HANDLED OPEN SUGAR – RED (VERY SCARCE; SUPER RED COLOR)**
284. **6" TALL U.S. GLASS PRIMROSE AND FISHNET CYLINDER VASE – RED (VERY RARE AND VERY DESIRABLE; HAVEN'T SOLD ONE IN YEARS)**
285. **FENTON BLACKBERRY BLOCK 7 PC. TANKARD WATER SET – AMYTH. (RARE BASE COLOR FOR THIS VERY SCARCE PATTERN)**
286. **FENTON BLACKBERRY BLOCK 6 PC. TANKARD WATER SET – DK. MARI. (VERY SCARCE AND WELL MATCHED SET; NICE COLOR)**
287. **FENTON BLUEBERRY HANDLED WATER PITCHER – BLUE (ONE OF MY FAVORITES; GREAT COLOR AND IRID.)**
288. (2) Fenton Blueberry Tumblers – Blue (selling 2 times the money; nice)
289. Fenton Daisy Cut Dinner Bell – Dk. Mari. (very scarce; excellent example)
290. **1911 B.P.O.E. ATLANTIC CITY DINNER BELL – BLUE (VERY RARE AND VERY DESIRABLE; GREAT COLOR AND DETAIL)**
291. **7 ½" 1914 B.P.O.E. PARKERSBURG ELKS PLATE – BLUE (RARE AND VERY DESIRABLE; GREAT COLOR AND IRID.)**
292. **7 ¼" 1911 B.P.O.E. ATLANTIC CITY ELKS FLAT PLATE – BLUE (RARE AND DESIRABLE; REALLY NICE SATINY EXAMPLE)**
293. **7 1/8" 1910 B.P.O.E. DETROIT ELKS 6 RUFFLED BOWL – AMYTH. (VERY SCARCE AND VERY DESIRABLE; NICE DETAIL)**
294. **6" FENTON "SEASON'S GREETINGS EAT PARADISE SODAS" PLATE – AMYTH. (VERY SCARCE; NICE COLOR AND IRID.)**
295. **6 ¼" FENTON "UTAH LIQUOR CO." HANDGRIP PLATE – AMYTH. (RARE AND VERY DESIRABLE SHAPE WITH GREAT COLOR AND IRID.)**
296. **8" FENTON ILLINOIS SOLDIERS AND SAILORS PLATE – BLUE (RARE AND VERY DESIRABLE; GREAT DETAIL AND IRID.)**
297. **FENTON PANELED DANDELION 7 PC. TANKARD WATER SET – BLUE (SCARCE SET WITH NICE COLOR AND IRID.)**
298. Fenton Paneled Dandelion 7 pc. Tankard Water Set – Green (another very scarce set with nice color)
299. Fenton Paneled Dandelion 7 pc. Tankard Water Set – Amyth. (scarce with excellent color and irid.)
300. **FENTON ORANGE TREE FTD. FLARED FRUIT BOWL – GREEN (EXTREMELY RARE SHAPE WITH EXCELLENT COLOR AND SUPER IRID.; REALLY NICE!!)**
301. **FENTON ORANGE TREE FTD. FLARED FRUIT BOWL – BLUE (RARE SHAPE... SUPER IRID.)**
302. Fenton Vintage Grape ftd. Fern Dish – Amberina (really nice example)
303. Fenton Kittens 4 sided Square Bowl – Mari. (nice satiny finish)
304. 5 ½" Fenton Panther 3 ftd. 6 Ruffled ind. Berry Bowl – Blue (scarce color)
305. **10" FENTON STAG AND HOLLY LG. BALL FTD. 8 RUFFLED BOWL – AMBER (RARE AND DESIRABLE BASE COLOR FOR THIS PATTERN; TOUGH!)**
306. 8 ¼" Fenton Orange Tree I.C. Shaped Bowl – Lt. Amyth. / Heavy Mari. (odd item...looks amber but has a light Amyth. base)
307. 8" Fenton Dragon and Lotus I.C. Shaped Bowl – Amber (scarce base color)
308. 5 7/8" Fenton Lotus and Poinsettia 3 ftd. 6 Ruffled Sauce – Amber (actually quite a difficult base color; light irid.)
309. Fenton Strawberry 2 Handled 4 sided Bon Bon – Amber (scarce color; nice finish)
310. **8 ¾" FENTON VINTAGE GRAPE 8 RUFFLED BOWL – AMBER (QUITE A RARE COLOR FOR THIS PATTERN; AND FIND A NICER ONE!)**

- ___ 311. **FENTON THISTLE FTD. OBLONG BANANA BOAT – GREEN (VERY SCARCE; VERY ATTRACTIVE)**
- ___ 312. Fenton Thistle ftd. Oblong Banana Boat – Blue (another nice example)
- ___ 313. Fenton Thistle ftd. Oblong Banana Boat – Amyth. (tough color to find)
- ___ 314. Fenton Thistle ftd. Oblong Banana Boat – Mari. (average example)
- ___ 315. **FENTON BUTTERFLY AND BERRY FTD. HATPIN HOLDER – BLUE (RARE AND DESIRABLE; PERFECT AND NICE)**
- ___ 316. Fenton Orange Tree ftd. Hatpin Holder – Green (rare color; nice, but has chip on point of one toe)
- ___ 317. **FENTON ORANGE TREE FTD. HATPIN HOLDER – ELEC. BLUE (SUPER EXAMPLE – NICE!! ROUGHNESS ON FEET)**
- ___ 318. Fenton Orange Tree ftd. Hatpin Holder – Mari. (scarce)
- ___ 319. 10" Tall Fenton Fine Rib Standard Swung Vase – Amber (scarce base color – really nice)
- ___ 320. **FENTON G & C LG. SIZE FTD. 8 RUFFLED FRUIT BOWL – ODD TEAL GREEN (VERY TOUGH ITEM TO FIND; ODD COLOR – NICE)**
- ___ 321. **FENTON G & C LG. SIZE FTD. 8 RUFFLED FRUIT BOWL – BLUE (ANOTHER VERY SCARCE ITEM; SATINY FINISH)**
- ___ 322. 12 ¼" Flare Fenton G & C Lg. size ftd. Flared Fruit Bowl – Milk Glass (non-iridized; a rare Fenton item to find)
- ___ 323. **FENTON G & C 3 FTD. CENTERPIECE BOWL – FRENCH OPAL. (ANOTHER RARE NON-IRIDIZED ITEM; TOUGH TO FIND)**
- ___ 324. Fenton G & C 3 ftd. 8 Ruffled small size Fruit Bowl – Dep. Green (non-iridized crystal green – unusual)
- ___ 325. **FENTON ORANGE TREE 8 PC. RUFFLED PUNCH SET – WHITE (RARE & DESIRABLE; PERFECT; NICE IRID.)**
- ___ 326. Fenton Orange Tree 8 pc. Flared Punch Set – Blue (very attractive set; bright satiny finish)
- ___ 327. 5 ¾" Fenton Butterfly and Berry ftd. 6 Ruffled ind. Berry Bowl – Amber (rare base color)
- ___ 328. Fenton Blackberry Block Tumbler – Amyth. (scarce; super irid.)
- ___ 329. Fenton Starflower Handled Water Pitcher – Blue (rare item; has chip on inside top edge)
- ___ 330. **FENTON FLUFFY PEACOCK 7 PC. BULBOUS WATER SET – AMYTH. (RARE AND DESIRABLE SET; WELL MATCHED)**
- ___ 331. Fenton Fluffy Peacock 7 pc. Bulbous Water Set – Mari. (scarce set; tough to find)
- ___ 332. Fenton Fluffy Peacock 7 pc. Bulbous Water Set – Green (some great tumblers; damaged pitcher at base)
- ___ 333. Fenton Holly Rose Bowl – Mari. (nice color; really nice example)
- ___ 334. Fenton Holly J.I.P. Crimped Edge Hat – Mari. / Lime Green (light base color and overlay)
- ___ 335. **FENTON ENAMELED LILY AND DRAPE BULBOUS WATER PITCHER – GREEN (VERY RARE ITEM; HAS A LARGE OPEN BLISTER ON INSIDE)**
- ___ 336. **FENTON ENAMELED MAGNOLIA AND DRAPE BULBOUS WATER PITCHER – AMYTH. (ANOTHER RARE ITEM; GREAT COLOR)**
- ___ 337. Fenton Starflower Handled Water Pitcher – Dk. Mari. (rare, but damaged – cracked and chipped)
- ___ 338. **FENTON LATTICE AND GRAPE 7 PC. TANKARD WATER SET – BLUE (VERY ATTRACTIVE AND WELL MATCHED; NICE AND COMPLETE)**
- ___ 339. Fenton Lattice and Grape Tankard Water Pitcher – Dk. Mari. (really nice example)
- ___ 340. **N ENAMELED DAISY AND LITTLE FLOWERS BULBOUS 7 PC. WATER SET – BLUE (VERY RARE ENAMELED SET; NOT MANY HAVE BEEN SOLD)**
- ___ 341. **IMPERIAL OCTAGON STEMMED WINE GLASS – VIOLET BLUE (VERY RARE COLOR; NICE)**
- ___ 342. **3 ½" TALL IMPERIAL OCTAGON STEMMED CORDIAL – MARI. (DEFINITELY A CORDIAL – VERY RARE)**
- ___ 343. 4" Tall Imperial Octagon Stemmed Wine Glass – Mari.
- ___ 344. 3 11/16" Tall Imperial Tulip and Cane Stemmed Wine – Mari. (very rare and very desirable)
- ___ 345. **3" TALL IMPERIAL 474 STEMMED CORDIAL – LT. MARI. (A REAL, REAL CUTIE!! VERY RARE ITEM!)**
- ___ 346. 4 1/8" Tall Imperial 474 Stemmed Wine Glass – Mari. (very scarce item)
- ___ 347. **3 ½" TALL IMPERIAL FLUTE AND CANE STEMMED CORDIAL – DK. MARI. (VERY RARE ITEM)**
- ___ 348. **3 ½" TALL IMPERIAL STAR AND FILE STEMMED CORDIAL – MARI. (RARE ITEM)**
- ___ 349. **2 7/8" TALL IMPERIAL FLUTE OR WIDE PANEL STEMMED CORDIAL – MARI. (WHATTA CUTIE!!)**
- ___ 350. 4 5/8" Tall European Berry Band Stemmed Wine Glass – Mari. (scarce)
- ___ 351. 3 ¾" Tall European Berry Band Stemmed Cordial – Mari. (scarcer)
- ___ 352. 3 ¾" Tall European Ranger (?) Stemmed Wine Glass – Mari. (odd item)
- ___ 353. Imperial Colonial 2 Handled Toothpick Holder – signed with Iron Cross – Mari. (chip on base)
- ___ 354. Maker (?) 2 Handled Geometric ftd. Salt Dip – Mari. (help me out there you guys!!)
- ___ 355. **JOAN OF ARC SMELLING SALTS BOTTLE – MARI. (VERY SCARCE; HAS ORIGINAL STOPPER)**
- ___ 356. Geometric Patterned ftd. Cordial – Lt. Mari. (? Pattern; scarce)
- ___ 357. N Wide Panel ind. Salt Dip – Celeste Blue (signed; nice)
- ___ 358. N Memphis Handled Punch Cup – Ice Blue (scarce)
- ___ 359. 5 7/8" N Lustre Flute 6 Ruffled Sauce – Green
- ___ 360. 7 ¾" Imperial Heavy Grape Flat Plate – Purp. (super irid.; nice)
- ___ 361. Imperial Flute Breakfast Open Sugar and Creamer – Purp. (scarce set)
- ___ 362. Imperial Pansy Oblong Relish Tray – Amber (nice irid.)
- ___ 363. Westmoreland Louisa ftd. Ruffled Nut Bowl – Amber (scarce color)
- ___ 364. 5 ½" Tall Fenton Diamond Point Columns Squatty Vase – Mari.
- ___ 365. Surprise!!!

DONALD DORAIS
150 HIGHLAND AVENUE
CUMBERLAND, RI 02864

PROVIDENCE RIDGE
BURNS
AUCTION SERVICE



Visit www.necga.com for pictures and brochure, Click on carnival glass links page, Look for Burns Auction. AUCTION FLEX AVAILABLE FOR THIS AUCTION AND CHECK US OUT ON AUCTION ZIP #29661.

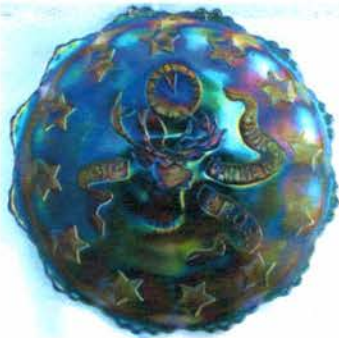


Lot# 195

LEE MARKLEY
BOX 306
MENTONE, IN 46539

**CARNIVAL GLASS AUCTION FRIDAY, AUG. 1 AT 6:00 P.M.
SATURDAY, AUG. 2 AT 10:00 A.M.**

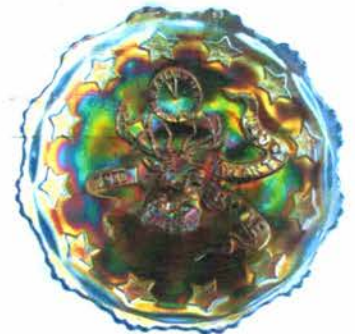
46539030606



Lot# 291



Lot# 78



Lot# 292



Lot# 190



Lot# 130



Lot# 200



Lot# 77



Lot# 270



Lot# 97