

Lincoln Land
Carnival Glass Club Convention

Carnival Glass 2014 AUCTION

Saturday,
June 14, 9:30 a.m.

Best Western Milwaukee Airport Hotel
Milwaukee, Wisconsin



20



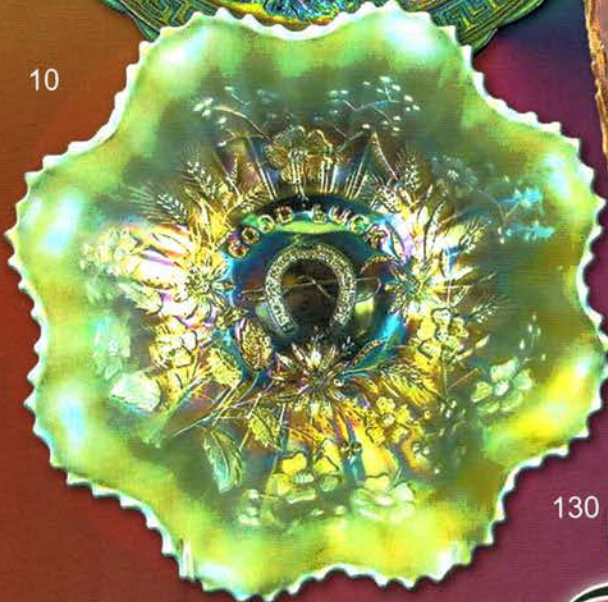
79



24



277



10



130



32

JIM & JAN SEECK

Seeck Auctions

641-424-1116

To view the complete auction, check our website at: www.seeckauction.com

JIM & JAN SEECK

CARNIVAL GLASS AUCTION

641-424-1116

Saturday, June 14, 2014 — 9:30 AM

**Lincoln Land Carnival Glass Club Convention
Best Western Milwaukee Airport Hotel and Convention Center
5105 South Howell Avenue
Milwaukee, Wisconsin**

NO BUYER'S PREMIUM—OPEN TO THE PUBLIC

ABSENTEE BIDDING is available on-line through Auction Flex using our online catalog at www.seeckauction.com

★ **Absentee bidding closes Fri., June 13 at 9 p.m. CST**

Please email us and we will put you on our email mailing list for auction notices.

e-mail: jimjan@seeckauction.com

We are pleased to bring the **David and Amy Ayers'** Carnival Glass collection to the Lincoln Land convention this year. David and Amy have been active Lincoln Land

members for several years. Their glass can be described as fantastic, beautiful, outstanding, and on and on! Don't miss this year's convention and auction!

Lodging

If staying at the Best Western Hotel, for reservations please call: (414)769-2100

Lincoln Land Carnival Club Convention

Lincoln Land Club Convention info: Contact President Kenda Jeske at 815-899-3442 or kendajoy@frontier.net

Terms: Cash or Check, VISA, MasterCard & Discover accepted w/proper ID. 4% Clerking Fee on all purchases made using credit cards. Announcements made day of sale take precedence over any printed information.

We have 3 options for absentee bidding for our live auctions:

- 1) If you DO NOT have internet access, you can:** Call us by phone to enter your bids at (641)424-1116 **OR** by sending the numbers of the item(s) desired and the amount bid on each to: Seeck Auctions, PO Box 377, Mason City, Iowa 50402. We would prefer you call us with your bids rather than send them in a letter.) We will enter your bids into our online bidding system.
★ Have all written bids in by **Wed., June 11.**
- 2) Enter your bids from our website into our online catalog through the Auction Flex system.**
 - ◆ **First-time bidders: Set up your account** by creating a user name and password and filling out basic information. You will also need to **register for the auction** which will ask you to enter a valid credit card number. This card will be validated by a one time only charge of \$1 charge to your card. **You will use this user name and password for all our auctions.**
 - ◆ You are not required to pay by credit card if you are successful with your online bid. We will let you know what you owe us through an email and you can decide how you would like to pay us.
 - ◆ An exciting advantage to online bidding is that you can be notified by email if you are outbid on an item, which lets you increase your bid in time, or bid on something else. **There is a cutoff date and time, for each auction, for entering your bids online.** ★ **Online absentee bidding for this auction closes Friday, June 13 at 9 p.m. CST.**
 - ◆ Remember that just because you are the high bidder in the online catalog, this does not mean you have won the item. Your bid still needs to **beat** the floor bidders and live phone bidders. If your high bid lands with a floor bidder during the live auction, the floor bidder takes precedence. You might want to bid higher on a highly desired item for a better chance at winning its absentee bid.
 - ◆ If you do not receive an item that sold for less than your bid, assume we canceled your bid because the item had a severe manufacture problem, damage, or was not listed correctly.
- 3) Live phone bidding is available on pieces with an estimated sale price of \$500 or more.** ★ Contact us by the **Thursday before the auction, which is June 12** We will need to know the lot# and the phone number that you can be reached at on the day of the auction. We also need your home phone number if different than the above number.

Please call with questions: 641-424-1116.

If you win an online bid you will be notified by phone or e-mail between one to three days after the auction.

There is a **\$7 handling charge for each successful bid, with shipping and insurance charges additional.**

ONLINE BID INCREMENTS: \$1 - \$100/\$5 \$100 - \$200/\$10 \$200 - \$700/\$25 \$700 - \$1,500/\$50
\$1,500 - \$3,000/\$100 \$3,000 - \$5,000/\$250 \$5,000+ Auctioneer's Discretion

- ___ 1. Rustic 7" squatty vase - marigold
- ___ 2. Windmill deep round sauce or berry -purple
- ___ 3. Blackberry Spray JIP CRE hat - marigold
- ___ 4. Peacock Tail bonbon - amethyst
- ___ 5. Grape & Cable 6" plate - purple
- ___ 6. M'burg Cosmos IC shaped sauce - green - radium
- ___ 7. Three in One 6" plate - marigold
- ___ 8. Iris ruffled compote - marigold
- ___ 9. Iris buttermilk goblet - marigold
- ___ 10. **Good Luck ruffled bowl w/ribbed back - aqua opal - super pretty example & rare**
- ___ 11. **Good Luck ruffled bowl w/ribbed back - sapphire - super pretty, rare color**
- ___ 12. **Good Luck ruffled bowl w/ribbed back - blue - electric**
- ___ 13. **Good Luck ruffled bowl w/ribbed back - purple - very pretty, stretchy type irid.**
- ___ 14. **Stippled Good Luck ruffled bowl w/ribbed back - marigold - dark, super**
- ___ 15. Strawberry 9" plate w/plain back - purple
- ___ 16. **Stippled Peacocks 9" plate w/ribbed back- renninger blue - very pretty for this rare color, a dandy!**
- ___ 17. **Stippled Peacocks 9" plate w/ribbed back- blue - electric, electric, electric**
- ___ 18. **Stippled Peacocks 9" plate w/ribbed back - marigold - lots of pinks & yellows**
- ___ 19. Drapery rose bowl - aqua opal - very nice example
- ___ 20. **Heavy Web square shaped bowl - peach opal - rare piece, rare shape, neat!**
- ___ 21. **Heavy Web banana boat shaped ruffled bowl - peach opal - very unusual shape, rare again**
- ___ 22. **Heavy Web round shaped bowl - peach opal - another dandy, where can you find three in one sale?**
- ___ 23. Acanthus deep round bowl - purple - super, a beauty!
- ___ 24. **NUART Homestead chop plate - emerald green - fantastic plate! has beautiful irid., a show piece**
- ___ 25. Basketweave Open Edge ruffled basket - aqua
- ___ 26. **Dragon & Lotus ruffled bowl - aqua opal - very rare & super**
- ___ 27. **Dragon & Lotus ruffled bowl - red - cherry red, red irid., what one wants in a red bowl!**
- ___ 28. **Imperial Grape ruffled bowl - peach opal- not sure what color to call this, has opal edges, has opal base, have not seen another!**
- ___ 29. Imperial Grape ruffled bowl - marigold - nice
- ___ 30. Fenton Peacock at Urn 9" plate - marigold - dark, nice
- ___ 31. Fenton Peacock at Urn 9" plate - white
- ___ 32. **Australian Kookaburra 11" Float bowl - purple - extremely rare bowl & super pretty, an Australian Prize!**
- ___ 33. **Acorn 7" ruffled bowl - amber opal - scarce color, nice**
- ___ 34. **Acorn 7" ruffled bowl - marigold on moonstone - two very slight manufacture splits on ruffle, common in this color, scarce**
- ___ 35. Acorn 7" ruffled bowl - aqua - nice
- ___ 36. **Stippled Three Fruits 9" plate w/ribbed back - aqua opal - super example with nice opal, excellent plate**
- ___ 37. Stippled Three Fruits 9" plate w/ribbed back- purple
- ___ 38. Stippled Three Fruits 9" plate w/ribbed back- marigold - dark
- ___ 39. Stippled Three Fruits 9" plate w/ribbed back - marigold - not as dark, just as pretty
- ___ 40. **Blueberry water pitcher - blue - very pretty example, rare pitcher**
- ___ 41. **Blueberry 7 pc. water set - marigold - dark, a beautiful set**
- ___ 42. Persian Medallion lg size crimped edge ruffled compote - green - nice
- ___ 43. **Hattie chop plate - purple - super pretty, electric irid., rare & very desirable**
- ___ 44. **Hattie chop plate - marigold - super nice**
- ___ 45. **Rose Garden 9" lg size letter vase - blue- very minor pinpoint on bottom edge, chip in pattern that looks iridized over**
- ___ 46. **Rose Garden 5 1/4" letter vase -marigold- cute, nice**
- ___ 47. **Orange Tree ruffled bowl - marigold on moonstone - very rare color for this bowl, nice**
- ___ 48. **Apple Blossom Twigs 3 in 1 edge bowl - purple - fantastic irid.**
- ___ 49. **Poppy Show 9" plate - blue - has very pretty electric highlights**
- ___ 50. **Poppy Show 9" plate - marigold - scarce**
- ___ 51. Orange Tree loving cup - marigold - pretty
- ___ 52. Curved Star lg rose bowl w/flower frog - marigold - pretty, 6 1/2" wide, 6" tall
- ___ 53. **Rose Show 9" plate - blue - has electric highlights**
- ___ 54. Four Flowers chop plate - peach opal - scarce, nice

- ___ 55. **Peter Rabbit ruffled bowl - marigold - very rare & desirable pattern, pretty**
- ___ 56. Dogwood Sprays dome ftd deep ruffled bowl- purple - electric & pretty
- ___ 57. Moon & Stars decanter & 2 wines - marigold- very scarce
- ___ 58. Stag & Holly lg size IC shaped ftd bowl - blue- super pretty
- ___ 59. Stag & Holly lg size IC shaped ftd bowl - amethyst - scarce color, nick on point
- ___ 60. Stag & Holly lg size IC shaped ftd bowl - amber - scarce color plus pretty
- ___ 61. **European Poppy Spray 9 1/2" vase - amethyst - from a Swedish Co. called Faglaviks**
- ___ 62. Concord 3 in 1 edge bowl- marigold- dark, nice
- ___ 63. **Fanciful ruffled bowl - purple - a beauty!**
- ___ 64. Peacock at the Fountain 4 pc. table set - marigold - a beautiful set, don't get much better than this!
- ___ 65. Pansy ruffled bowl - purple - super pretty
- ___ 66. N's Peacock at Urn master IC bowl- ice green - super pretty, minor nick between points
- ___ 67. **N's Peacock at Urn master IC bowl - ice blue - nice**
- ___ 68. **N's Peacock at Urn master IC bowl - marigold - nice**
- ___ 69. Bullseye & Beads 11" vase - purple - super irid.
- ___ 70. **Cosmos & Cane 7 pc. tankard water set - white - super rare set & nice, not many opportunities, two tumblers have chips**
- ___ 71. **Peacocks ruffled bowl w/ribbed back - aqua opal - super opal, nice bowl**
- ___ 72. Peacocks ruffled bowl w/ribbed back - blue - electric, nice
- ___ 73. **European Patricia pickle castor- marigold- super rare, have not seen another, slight manufacture roughness inside rim of lid**
- ___ 74. Little Flowers 10" ruffled bowl - amethyst
- ___ 75. **Imperial Grape 8 pc. punch set - purple - super pretty set, Imperial at its best**
- ___ 76. Holly 9" plate - marigold - super example
- ___ 77. **Coin Dot deep round bowl - red - cherry red color, nice**
- ___ 78. Western Thistle 5" vase - marigold - neat European piece
- ___ 79. **Hearts & Flowers ruffled bowl w/ribbed back - aqua opal - fantastic opal, very few look like this, from the Ruth Phillips collection, extremely rare, especially with his much opal, WOW**
- ___ 80. Hearts & Flowers ruffled bowl w/ribbed back - marigold - nice
- ___ 81. **Dragon & Strawberry deep round bowl - green - gorgeous example, small spot of epoxy on collar base**
- ___ 82. **Heavy Grape chop plate - purple - this thing is fantastic!**
- ___ 83. Heavy Grape 8" plate - purple - also super pretty
- ___ 84. **Crucifix candlesticks - marigold - rare & very desirable set**
- ___ 85. Crucifix candlesticks - milk glass - not Carnival
- ___ 86. Grape & Cable 11" ruffled bowl w/BW back - green- very pretty & very rare to find in green
- ___ 87. **Australian Thunderbird lg ruffled bowl- purple or dark- rare bowl, highly desirable**
- ___ 88. **Australian Thunderbird lg ruffled bowl - marigold - rare bowl, nice**
- ___ 89. Rose Garden 7 1/2" cylinder vase - blue - very pretty, has typical peeling on top point
- ___ 90. Shell & Sand deep ruffled bowl- purple- super
- ___ 91. Shell & Sand deep ruffled bowl - smoke - also super pretty, rare color
- ___ 92. **Wisteria tumbler - ice blue - extremely rare tumbler**
- ___ 93. **Holly ruffled bowl - blue opal - very rare bowl, nice**
- ___ 94. **Holly ruffled bowl - red - cherry red color, hard to find**
- ___ 95. Holly ruffled bowl - green - spectacular emerald irid.
- ___ 96. Persian Garden master IC bowl - white - nice
- ___ 97. Persian Garden IC sauces (2) - white - one has nick on point
- ___ 98. **Thumbprint & Ovals vase - purple - super pretty, scarce**
- ___ 99. Stippled Strawberry ruffled bowl w/ribbed back - marigold - pastel type irid.
- ___ 100. **Four Seventy Four small size water pitcher - purple - fantastic, very rare pitcher, great chance**
- ___ 101. Grape & Gothic Arches 4 pc. table set - marigold - nice
- ___ 102. **Wishbone ftd ruffled bowl - green - some might call this electric**
- ___ 103. Scroll Embossed 9" plate - marigold - pretty
- ___ 104. Leaf & Beads rose bowl - aqua opal - butterscotch, nice
- ___ 105. **Vintage 10" 3 in 1 edge bowl - celeste blue - fantastic stretch irid., beautiful! has sliver off top of one ruffle**

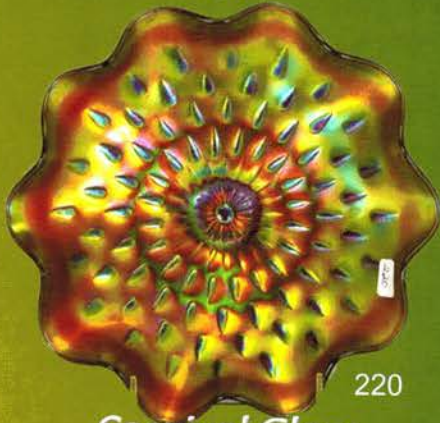
- ___ 106. Brooklyn Bridge 10 ruffled bowl-m'gold- nice
- ___ 107. Ski Star 10" ruffled bowl - purple - super pretty
- ___ 108. Curled Rib 8" vase - smoke - nice
- ___ **109. Scroll Embossed ruffled bowl - green - emerald, super pretty, rare color**
- ___ 110. Two Flowers lg size ftd ruffled bowl - marigold
- ___ **111. Poppy Show ruffled bowl - ice blue - scarce, very nice**
- ___ **112. Poppy Show ruffled bowl - blue - hard to find color, electric highlights**
- ___ **113. Double Stemmed Rose dome ftd 3 in 1 edge bowl - blue - scarce color, also has radium finish, unusual, no harm pinpoint on base**
- ___ 114. Princeton 6 1/4" vase - marigold - very rare size & shape, made by Inwald
- ___ 115. Good Luck PCE bowl w/ribbed back - blue - electric, nice
- ___ 116. Imperial Grape wine bottle - purple - super pretty
- ___ 117. Imperial Grape 5 pc. wine set-marigold-nice
- ___ **118. Grape & Cable 8 pc. punch set - purple - very nice set**
- ___ 119. Fenton's Fine Rib 9 1/2" vase - aqua
- ___ 120. Fenton's Fine Rib 10 1/2" vase - blue - chip on top edge
- ___ **121. Spectors Department Store/Heart and Vine 9" plate - marigold - super scarce plate, nice**
- ___ **122. Beetle Ashtray - blue - highly desirable novelty**
- ___ 123. Embroidered Mums ruffled bowl w/ribbed back - amethyst - slight manufacture peeling on base
- ___ 124. Leaf Chain 9" plate - marigold
- ___ **125. Peacock at the Fountain 7 pc. water set- blue - a really pretty set, one tumbler has base chip**
- ___ **126. Peacock at the Fountain 7 pc. water set - marigold - another nice set!**
- ___ 127. Good Luck 9" plate w/BW back - purple - scarce, nice
- ___ **128. Stippled Good Luck 9" plate w/ribbed back - marigold - pastel irid., lots of pinks & yellows**
- ___ 129. Fenton's Grape & Cable ruffled fruit bowl - blue - couple minor pinpoints on edge
- ___ **130. Peacock Garden vase - marigold - yes, this is an old one, purchased at the Ruth Phillips auction, a dandy, not many known!**
- ___ 131. Peacock Garden vase - champagne opal - signed Fenton, contemporary
- ___ 132. Peacock Garden vase - blue - Fenton sticker, contemporary
- ___ 133. Peacock Garden vase - teal green - Fenton sticker, contemporary
- ___ 134. Peacock Garden vase - purple - bottom marked Fenton, contemporary
- ___ 135. Peacock Garden vase - red - has ruffled top, stretchy irid., Fenton sticker, contemporary
- ___ 136. Fenton Stretch 4 lily epergne - red - signed Fenton, chip by small lily hole
- ___ 137. Heavy Iris vase - blue - signed Fenton, contemporary
- ___ 138. Heavy Iris vase - red - signed Fenton, contemporary
- ___ 139. Levay 2005 Good Luck vase - red - 7" tall, 5" base, contemporary
- ___ 140. La Bella Rose vase - smoke - marked IG
- ___ 141. La Bella Rose vase - marigold - marked IG
- ___ 142. Chessie Cat - lavender - contemporary
- ___ 143. 1994 ICGA Diamond Rib JIP vase - red - has Coralene butterflies, hand painted by Martha Reynolds
- ___ 144. Milady ruffled top vase - red - signed Fenton, contemporary
- ___ 145. Milady ruffled top vase - blue - signed Fenton, contemporary
- ___ 146. Chessie 6" cat - blue - contemporary, signed FAGCA
- ___ 147. Perfume bottle w/feather decoration-blue - contemporary
- ___ 148. Perfume bottle w/hanging hearts - purple - contemporary
- ___ 149. Fenton decorated Atlantis vase - blue opal - signed Fenton, hand painted by Green
- ___ 150. Fenton Atlantis vase - red - signed Fenton
- ___ 151. Fenton Atlantis banana boat whimsey shaped vase - peach opal - signed Fenton
- ___ 152. Pansy hldd basket - plum opal - has family signature, Nancy Fenton 2006
- ___ 153. 1996 LLCGA party favor miniature basket - pink opal
- ___ 154. Oversized cvd turkey - marigold - largest covered turkey I've seen, contemporary
- ___ 155. Covered turkey - purple - contemporary
- ___ 156. Stretch Glass 10" ruffled bowl - red - signed Fenton, contemporary
- ___ 157. Swan salt - red - marked IG
- ___ 158. Swan salt - blue - marked IG
- ___ 159. Elks paperweight - blue & Cinclair ltd Elks 5" plate - marigold

- ___ 160. Alpine Thistle 9" vase - red - from family signature series, bottom marked Frank M. Fenton, 1993, #393
- ___ 161. Heart & Vine 9" plate - blue - marked Fenton, contemporary
- ___ 162. Christmas square hdd basket - red - bottom marked AP
- ___ 163. Christmas banana boat shaped hdd basket - blue - bottom marked AP
- ___ 164. Poppy Show vase - violet opal - Fenton, contemporary
- ___ 165. Poppy Show vase - emerald green - Fenton, contemporary
- ___ 166. Poppy Show vase - cranberry opal - Fenton, contemporary
- ___ 167. Poppy Show vase - marigold - dark & super, this is an OLD one!
- ___ 168. Charlotte compote - blue - scarce, Brockwitz
- ___ **169. Peacock lamp - red - has to be the prettiest red one I've seen, fantastic**
- ___ **170. Peacock lamp - purple - also a beauty, great pair**
- ___ 171. Leaded lamp, made from damaged pieces of glass
- ___ **172. Grape & Cable perfume bottle - purple - very pretty example**
- ___ 173. Stippled Grape & Cable cracker jar - marigold - rare stippled, nice
- ___ 174. Kittens cup & saucer - marigold
- ___ **175. Fashion water pitcher - purple - electric, super, rare pitcher**
- ___ 176. Cherry Chain 6" plate - marigold
- ___ 177. Hattie ruffled bowl - purple - might be a little lavender, super!!
- ___ **178. M'burg Hanging Cherries milk pitcher - marigold - satin, rare pitcher, couple nicks on base**
- ___ **179. Carnival Hobstar 4 pc. table set - purple - super pretty set**
- ___ 180. Indian Bracelet tumbler - marigold JAIN
- ___ **181. Peacocks PCE bowl w/plain back - white-frosty, nice, scarce**
- ___ **182. Peacocks PCE bowl w/ribbed back - lavender - very nice bowl, rare color**
- ___ 183. Tree Trunk 10" vase - green - pretty
- ___ 184. Vintage fernery - red - scarce color
- ___ **185. Hearts & Flowers PCE bowl w/ribbed back blue - electric & super, scarce color**
- ___ 186. Heavy Vine 8" perfume - marigold - minor nick on top edge of bottle
- ___ 187. Heavy Vine 7 1/2" perfume - marigold
- ___ 188. Heavy Vine 7" perfume - marigold
- ___ 189. Ripple 8" squatty vase - purple - 3 3/8" base, pretty
- ___ 190. Orange Tree ruffled fruit bowl - marigold
- ___ **191. Stippled Three Fruits ruffled bowl w/ribbed back - aqua opal - great opal, a beauty, WOW**
- ___ 192. Six Petals ruffled bowl - purple - a stunner!
- ___ 193. Cut Flowers vase - marigold
- ___ 194. Imperial Grape ruffled bowl - purple - super
- ___ 195. Basketweave Open Edge JIP basket - red
- ___ 196. Octet ftd ruffled deep bowl - green
- ___ **197. Australian Emu large compote - purple - very pretty & hard to find**
- ___ 198. Pinecone 6" saucer shaped plate - marigold
- ___ **199. Imperial Grape 10" ruffled bowl - purple-tons of pretty blue irid.**
- ___ 200. Circle Scroll JIP hat shape - marigold - scarce, nice
- ___ **201. Windmill milk pitcher - purple - absolutely fantastic, spot of epoxy on base**
- ___ 202. Open Rose 8" ruffled bowl - amber
- ___ 203. Barden Heier Wine & Liq, CO. smashed bottle ashtray - marigold - neat novelty
- ___ **204. Heart & Vine 9" plate - blue - beautiful!**
- ___ 205. Open Rose 9" plate - lavender or ice purple - mold roughness on base, this is a really unusual plate
- ___ **206. Vintage ruffled bowl - Persian Blue - super pretty example, irid. is even and nice**
- ___ 207. Three Fruits ruffled bowl w/BW back-green
- ___ 208. Diamond Points 7 1/2" squatty vase - marigold
- ___ 209. European pin box w/lid - blue - 3" diameter, cute
- ___ **210. Strawberry PCE bowl w/plain back-green super irid., some may call emerald**
- ___ 211. Apple Blossom Twigs ruffled bowl - purple-super
- ___ 212. Apple Blossom Twigs ruffled bowl - peach opal
- ___ **213. M'burg Perfection tumbler - amethyst - scarce**
- ___ **214. Peacocks 9" plate w/ribbed back - amethyst - most may call lavender, super**
- ___ **215. Peacocks 9" plate w/plain back - green - scarce, nice**
- ___ **216. Peacocks 9" plate w/ribbed back - marigold - nice**
- ___ **217. Peacocks 9" plate w/ribbed back - ice green - nice**
- ___ **218. Peacocks 9" plate w/ribbed back - white**
- ___ 219. Grape & Cable powder jar - marigold - nice
- ___ **220. Raindrops dome ftd ruffled bowl - purple - super!! great pedigree - from the Whitleys, to the Morgans to the Ayres**

- ___ 221. Frosted Fish vase - marigold - 9 1/2", bottom marked JAIN
- ___ 222. Six Petal tri-cornered bowl - purple - another super piece
- ___ 223. **Fenton's Grape & Cable ball ftd ruffled bowl - celeste blue - very hard to find bowl, small chip on backside of top edge**
- ___ 224. Stag & Holly spt ftd 9" plate - marigold - super pretty
- ___ 225. Grape & Cable spooner - purple
- ___ 226. **Garden Path Variant 10" ruffled bowl - white - pretty, scarce**
- ___ 227. Ripple 5 1/2" miniature vase - marigold - 2 1/2" base
- ___ 228. **Fantail IC shaped ftd bowl - blue - super pretty & scarce**
- ___ 229. Rex 5" vase - marigold
- ___ 230. Windmill ruffled bowl - purple - super
- ___ 231. **Orange Tree 9" plate - marigold - dark, pretty**
- ___ 232. **Rose Show ruffled bowl - aqua opal - scarce, nice**
- ___ 233. Heavy Vine tumble up bottle only- marigold
- ___ 234. Pair of Heavy Vine cvd powder jars - marigold - small one has chip on lid
- ___ 235. Heavy Vine pin dish - marigold
- ___ 236. Fenton Peacock at Urn ruffled bowl - green
- ___ 237. Four Flowers 6" plate - peach opal
- ___ 238. **Round Up low ruffled bowl - purple - a beautiful one!**
- ___ 239. Moonprint 10" ruffled bowl - marigold
- ___ 240. **Dragon & Lotus 3 in 1 edge bowl - peach opal - pretty, scarce**
- ___ 241. Vintage 7" plate - blue - very pretty
- ___ 242. **N's Stippled Peacock at Urn master IC bowl - marigold - lots of beautiful yellow irid., pretty**
- ___ 243. Blackberry miniature compote - blue - small nick on base
- ___ 244. Blackberry miniature compote - marigold - turned up more than most
- ___ 245. **Wishbone ftd ruffled bowl - white - frosty, nice**
- ___ 246. Orange Tree hatpin holder - marigold - large chip on backside of one foot, fracture on another foot
- ___ 247. **Holly ruffled hat shape - red - red irid., pretty**
- ___ 248. Captive Rose 6 ruffled bowl - green - pretty
- ___ 249. Flute breakfast sugar - purple - super
- ___ 250. Panther ftd ruffled sauce - marigold
- ___ 251. Kittens toothpick - marigold
- ___ 252. Floral & Grape water pitcher - purple - very nice example for these, as pretty as I've seen
- ___ 253. **Dog Face ashtray - marigold - rare & desirable**
- ___ 254. Imperial Grape deep round bowl - purple
- ___ 255. **Soldiers & Sailors 7" plate - marigold - dark & nice, highly desirable**
- ___ 256. Diamond Lace water pitcher & tumbler - purple - pretty, tumbler has buffed nick on base
- ___ 257. Kittens 2 sides up dish - marigold
- ___ 258. Rose Garden 6" round bowl - marigold
- ___ 259. Pinecone 6" plate - amethyst - very nice
- ___ 260. Miniature Morning Glory 5 1/4" vase - purple - super
- ___ 261. Miniature Morning Glory 5 1/2" vase - smoke - nice
- ___ 262. Miniature Morning Glory 4 1/2" & 6" vases- marigold
- ___ 263. Peach Lustre 7" vase - marigold on milk glass
- ___ 264. **Stippled Peacocks PCE bowl w/ribbed back - blue - very pretty w/electric highlights**
- ___ 265. Grape & Cable hatpin holder - marigold
- ___ 266. Swan salt - peach opal - nice example
- ___ 267. Swan salt - marigold
- ___ 268. Swan salts - ice green & celeste blue
- ___ 269. **Peacock at the Fountain 8 pc. punch set - marigold - dark & super**
- ___ 270. Dugan Cherries ruffled bowl - peach opal
- ___ 271. **Dragon & Strawberry IC shaped bowl - blue - very scarce, very pretty!**
- ___ 272. Kittens ruffled dish - marigold
- ___ 273. **Field Flower water pitcher - amethyst- has fantastic lavender colored irid., a dandy!**
- ___ 274. **Australian Kiwi ruffled sauce - marigold- a highly sought after pattern in Australian glass, not often sold**
- ___ 275. Waterlily ftd IC shaped master berry bowl - marigold - dark, nice
- ___ 276. Little Barrel - marigold
- ___ 277. **Hearts & Flowers 9" plate w/ribbed back white-super pretty irid. on this rare plate**
- ___ 278. **Hearts & Flowers 9" plate w/ribbed back marigold - also a beauty**
- ___ 279. India Hand 8 1/2" vase - camphor w/gold accents - unusual
- ___ 280. Misc. box lot of Carnival Glass

Seeck Auctions
 PO Box 377
 Mason City, Iowa
 50402

PRESORTED
 FIRST CLASS MAIL
 US POSTAGE
 PAID
 MAIL EXPEDITORS



220

Carnival Glass
 2014 Auction

Sat. June 14, 9:30 a.m.

Best Western Milwaukee
 Airport Hotel
 Milwaukee, Wisconsin

T4 P1 249
 LEE MARKLEY
 BOX 306
 MENTONE IN 46539-0306



271

26

206

105

16

100

70

75

169

255

49

36

47

93