

BURNS

AUCTION SERVICE

BILL & CAROLE RICHARDS COLLECTION

PART 1

CARNIVAL GLASS AUCTION
SATURDAY, MAY 31st at 9:30 A.M.

PREVIEW FRIDAY EVENING
STARTING AT 6 P.M.
SATURDAY FROM 7:30 TO 9:30 A.M.

at the
HOLIDAY INN
15471 ROYALTON ROAD
STRONGSVILLE, OH 44136
(440) 238-8800
(Exit 231 off I-71)

Licensed by the Department of Commerce
in favor of the State of Ohio



Lot 210



Lot 236



Lot 25



Lot 220



Lot 50

I'm sure hoping that a whole bunch of you folks have the last day of May open...cause at that time we have the pleasure of selling at auction the first installment of the collection of my dear friend and auctioneer – Ole Bill Richards.

Bill passed away in June of 2013 and one of his wishes was for me and Little Bill to sell the glass for Carole... Well... Here we go!!!

The Holiday Inn in Strongsville, Ohio will host the event. The facility is located just ½ mile south of the Ohio Turnpike and 5-6 miles south of the Cleveland Hopkins Airport. The motel does have a shuttle service – talk to the motel for details.

There is a special rate (mention Tom Burns auction) of \$92 a night plus taxes and reservations are due by **May 16th, 2014**. So get to it and make your reservations NOW!! Phone # (440) 238-8800.

The Auction Flex absentee bidding system will be used for online bidding and we hope to see a bunch of you participate. You can also locate us on Auction Zip #29661.

It has been quite a while since I've had an auction in this Ohio Neck of the Woods and I'm looking forward to seeing a few old faces...and if I can ever be of assistance to you, please contact me at:

Tom Burns – Burns Auction Service

183 Sunnyside Drive

Clermont, FL 34711

(407) 592-6552



Lot 185



Lot 188



Lot 186



Lot 30



Lot 100



Lot 55

1. (3) 1 1/2" Tall European Miniature Punch Cups – Lt. Mari. (selling as a set)
2. 3" Diam. Enamelled Decorated Covered Powder Jar – Lt. Mari. (scarce hinged item)
3. 3 1/2" Czech Covered Dresser Jar with a Miniature Rose Bowl – Both Enamelled – Lt. Mari. (selling the pair for one money)
4. **2 1/2" MARY GREGORY ENAMELED COVERED DRESSER JAR – LT. MARI. (SCARCE AND DESIRABLE ENAMELED ITEM; NICE)**
5. 8 3/4" Tall Mary Gregory Enamelled Decanter and (1) Wine Glass – Lt. Mari. (another well done pair; selling as a set)
6. 5 1/4" Tall Mary Gregory Enamelled Goblet – Lt. Mari. (very scarce; nice)
7. 3 1/4" Tall Mary Gregory Stemmed Cordial – Lt. Mari. (cute as a button; nice décor.)
8. 2 1/8" Tall Mary Gregory Mini Handled Mug- Lt. Mari. (cute item; nice)
9. 8" Tall Czech Enamelled 2 pc. Tumble Up –Mari.
10. **11" TALL MAKER (?) SAMOVAR FTD. COFFEE URN – MARI. (VERY DIFFERENT; ALL ONE PIECE EXCEPT FOR TEAPOT SHAPED TOP)**
11. 10" Tall Enamelled European Wine Decanter and Stopper – Mari. / Cranb. (attractive item)
12. (3) 3 1/4" Tall European Enamelled Stemmed Cordials – Mari. / Cranb. (selling so much each for set)
13. 4" Tall Novelty Mellon Rib Enamelled Vase in Metal Frame – Mari.
14. 3" Tall Shriner Shot Glass – Mari.
15. **(3) CZECH ENAMELED DECORATED TOILETRY BOTTLES AND STOPPERS – MARI. (UNUSUAL WITH GREAT ENAMEL DECOR.; 2 MATCH)**
16. 7" Tall European Enamelled Decorated Cruet and Stopper – Lt. Mari. (really nice floral decor.)
17. 9 1/2" Tall European Enamelled Decorated Decanter and Stopper – Lt. Mari. (nice size and decoration)
18. 3 1/2" Tall European Enamelled Wine Glass – Lt. Mari. (scarce; nice)
19. 2 7/8" Tall European Enamelled Stemmed Cordial – Lt. Mari. (scarce; nice)
20. **5 1/2" TALL EUROPEAN ENAMELED SUGAR SHAKER – MARI. (VERY SCARCE AND DESIRABLE; TOUGH ITEM)**
21. 3 1/4" Tall European Enamelled Salt Shaker – Mari. (sorta matches above item; very desirable)
22. 3 1/4" Tall Western Pomona Enamelled Decorated Mini Creamer – Mari. (very scarce; has a crackle effect; nice)
23. 6 1/4" Tall Enamelled Atomizer – Mari. (gaudy item; different)
24. 4" Tall Fenton Stretch Squatty Perfume with Enam. Decor. – Grecian Gold (very scarce item; nice)
25. **M'BURG MITERED OVALS TRI-CORNERED CRIMPED EDGE VASE – AMYTH. (EXTREMELY RARE AND VERY DESIRABLE; EXCELLENT IRID. AND A REAL TROPHY FOR OUR HOBBY)**
26. **6 3/4" TALL M'BURG TULIP AND SCROLL SWUNG VASE – AMYTH. (VERY SCARCE AND DESIRABLE PATTERN; NICE)**
27. 9 3/4" Tall M'burg Swirl Hobnail Swung Vase (very scarce & desirable; nice irid.; has mirror on edge)
28. **6" M'BURG "THE GREAT HOUSE OF ISAAC BENESCH AND SONS" 6 RUFFLED ADVERTISING BOWL – AMYTH. (VERY SCARCE & VERY DESIRABLE WITH A NICE SATINY FINISH)**
29. M'burg Marilyn Tumbler – Amyth. (badly chipped at base)
30. **9 3/4" TALL M'BURG OHIO STAR VASE–AMYTH. (RARE AND DESIRABLE; HAS A SATINY FINISH – A TOUGHIE!!)**
31. **8" X 8 1/2" M'BURG ZIG ZAG 4 SIDED SQUARE CRIMPED BOWL – AMYTH. (RADIUM & RARE; ALWAYS DESIRABLE & VERY ATTRACTIVE)**
32. **7 1/2" M'BURG COURTHOUSE 6 RUFFLED BOWL – AMYTH. (RADIUM AND ANOTHER DESIRABLE AND POPULAR ITEM)**
33. 9 7/8" M'burg Peacock at the Urn Lg. Ice Cream Bowl – Amyth. (satiny finish; has bee and no beading)
34. 5 3/8" M'burg Peacock Flared ind. Berry Bowl – Amyth. (radium blues & reds; no bee, no beading)
35. **M'BURG HOBNAIL SWIRL SPITTOON – AMYTH. (ONE OF MY FAVORITES; HAS AN UNUSUAL PINCHED FLARE)**
36. **8 7/8" M'BURG TROUT AND FLY 6 RUFFLED BOWL – AMYTH. (RADIUM WITH EXCELLENT COLOR & IRID.)**
37. 8 3/4" M'burg Trout and Fly Bowl with 3 in 1 edge – Amyth. (satiny and very desirable; nice)
38. 8 7/8" M'burg Trout and Fly Bowl with 3 in 1 edge – Mari. (a really nice satiny example; nice finish)
39. 5 1/2" M'burg Blackberry Wreath Tri-Cornered Sauce – Mari. (radium and getting tough to find)
40. **M'BURG HANGING CHERRIES STEMMED ROUND COMPOTE - MARI. (RADIUM AND RARE; TOUGH TO FIND IN THIS COLOR)**
41. **M'BURG SWIRL HOBNAIL SPITTOON – MARI. (VERY SCARCE & DESIRABLE; SATINY & NICE)**
42. 9 1/2" M'burg Rays and Ribbons 6 Ruffled Crimped Edge Bowl – Green (radium with a crazy crimped edge)
43. 9" M'burg Holly Sprig 6 Ruffled Crimped Edge Bowl – Green (radium finish and another crazy crimped item)
44. 9 1/2" M'burg Fleur de Lis domed 6 Ruffled 3 in 1 Crimped Edge Bowl – Green (radium and rare; really desirable)
45. **10 1/4" M'BURG MANY STARS BOWL WITH 3 IN 1 CRIMPED EDGE AND 5 POINTED STAR (RARE ITEM WITH A NICE RADIUM FINISH – TOUGH!)**
46. 9" M'burg Trout and Fly Bowl with 3 in 1 Edge – Green (satiny and very scarce; nice color and irid.)
47. 9 1/2" M'burg Nesting Swan 6 Ruffled Bowl – Green (radium and very attractive; scarce)
48. **7 1/2" M'BURG PEACOCK AT THE URN "SHOT GUN" BOWL WITH 3 IN 1 EDGE – GREEN (RADIUM AND A RARE SIZE; TOUGH ITEM)**
49. 10" M'burg Peacock at the Urn Lg. Ice Cream Bowl – (attractive satiny item; has bee; no beading)
50. **M'BURG MITERED OVALS TRI-CORNERED CRIMPED EDGE VASE – GREEN (RADIUM & EXTREME! AND DESIRABLE; NOT OFTEN SOLD)**

- Big Zag 6 Ruffled Bowl – Green (radium
ive gold highlights)
- WHIRLING LEAVES TRI-CORNERED
ED EDGE BOWL – GREEN (RADIUM WITH A
IGHT GOLD FINISH; NICE)**
- M'BURG HANGING CHERRIES STEMMED ROUND
COMPOTE – GREEN (RARE AND VERY DESIRABLE;
RADIUM AND REALLY NICE)**
- M'BURG MULTI-FRUITS AND FLOWERS 8 PC.
FLARED PUNCH SET – GREEN (RARE & VERY
DESIRABLE & ATTRACTIVE SET; NICE &
COMPLETE)**
55. **M'BURG OHIO STAR VASE – GREEN (RADIUM AND
ATTRACTIVE; MANUF. PEELING CHIP ON PATTERN)**
56. 9 ½" M'burg Swirl Hobnail Swung Vase – Green (very
scarce; a tiny bit of peeling on edge)
57. **M'BURG BPOE ELK'S PAPERWEIGHT – GREEN
(VERY RARE; ONLY A FEW KNOWN IN THIS COLOR;
DAMAGE ON BASE; WEAR CHIPS ON FACE)**
58. 9 ½" TALL X 6" BASE M'BURG WILD ROSE
KEROSENE LAMP – GREEN (RARE AND VERY
DESIRABLE; LOVE THESE THINGS!!!)
59. 10 ¼" M'BURG "BERNHEIMER BROTHERS" MANY
STARS 6 RUFFLED BOWL – BLUE (RARE AND
DESIRABLE; HAS A BIT OF SILVERY IRID.)
60. **CAMBRIDGE INVERTED STRAWBERRY SPITTOON –
GREEN (RARE & DESIRABLE; GREAT COLOR
AND IRID.)**
61. Cambridge Inverted Strawberry Covered Powder Jar –
Green (very scarce; great color and irid.)
62. Cambridge Double Star 7 pc. Water Set – Green (scarce
and complete set; nice)
63. (2) Cambridge Double Star Tumblers – Green (rim
damage on both)
64. Cambridge Inverted Feather Covered Cracker Jar –
Green (scarce; small chip on one point of base)
65. **CAMBRIDGE COLOGNE BOTTLE AND STOPPER –
GREEN (RARE AND VERY DESIRABLE; RADIUM
AND NICE)**
66. Cambridge Cologne Bottle with Crystal Stopper – Green
(same as above)
67. **CONSOLIDATED SUNKEN HOLLYHOCK GWW LAMP
– MARI. (RARE AND DESIRABLE; ELECTRIFIED;
WHERE DO YOU FIND THEM!!!)**
68. Dugan Pastel Swan Master Salt with Metal Tag – "Hotel
Marlborough" – Purp. (neat item with the tag; has a short
beak!)
69. Dugan Pastel Swan Master Salt – Mari. (scarce; has
enameled "Souvenir Deer Isle, Maine")
70. **DUGAN S REPEAT 8 PC. MASTER PUNCH SET –
PURP. (BOWL IS CRACKED AROUND BASE, BUT IS
STILL A LOOKER!)**
71. Dugan Heavy Iris Tumbler – Lt. Amyth/ Horehound
(bright base color)
72. Dugan Heavy Iris Tumbler – Purp. (nice color)
Dugan Heavy Iris Tumbler with Enameled "Souvenir of
Lincoln, Ill." – Purp. (nice color; nice souvenir)
Dugan Heavy Iris Tankard Water Pitcher – Purp. (a real
cuty!...but has a tiny hole around bulged base)
75. **DUGAN DAHLIA FTD. WATER PITCHER WITH RED STAIN
– WHITE (RARE; DESIRABLE WITH THE RED STAIN; RE-
ALLY NICE)**
76. Dugan Dahlia ftd. Creamer with Red Stain – White (very
scarce item if you're looking!!)
77. Dugan Dahlia ind. ftd. Berry Bowl with Red Stain – White
(another tough item)
78. Dugan Dahlia Master ftd. Berry Bowl – White (scarce;
frosty with excellent irid.)
79. Dugan Cherry Wreath Tumbler – Horehound (odd base
color; attractive)
80. **DUGAN CHERRY WREATH 7 PC. WATER SET –
PURP. (QUITE A RARE SET; TOUGH TO FIND)**
81. **DUGAN CHERRY WREATH OVAL MASTER BERRY
BOWL – BLUE (RARE BASE COLOR; DARK IRID.)**
82. Dugan Cherry Wreath Oval ind. Berry Bowl – Blue
(another rare base colored item; tough!)
83. Dugan Cherry Wreath Oval Master Berry Bowl – Purp.
(ground down damage on edge)
84. Dugan Cherry Wreath Oval Ind. Berry Bowl – Purp. (nice
irid.)
85. Dugan Cherry Wreath Oval Master Berry Bowl – Mari.
(nice color and irid.)
86. Dugan Cherry Wreath Oval ind. Berry Bowl – Mari. (nice
color)
87. Dugan Cherry Wreath Oval Master Berry Bowl with Red
Stain – White (frosty and nice)
88. Dugan Cherry Wreath Oval ind. Berry Bowl – White
(frosty and nice)
89. **DUGAN CHERRY WREATH 5 PC. TABLE SET WITH
RED STAIN – WHITE (RARE AND VERY DESIRABLE
SET; MISSING SUGAR LID; BUTTER SIGNED WITH
"DIAMOND D")**
90. **DUGAN CHERRY WREATH 7 PC. WATER SET –
WHITE (RARE AND DESIRABLE SET WITH GOLD
TRIM)**
91. Dugan Cherry Wreath Oval Master Berry Bowl in Brides
Bowl Frame – P. Opal (scarce; opal on edge)
92. **DUGAN PERSIAN GARDEN LG. 6 RUFFLED FRUIT BOWL
& BASE – WHITE (VERY SCARCE AND DESIRABLE;
FROSTY AND A BEAUTY!!!)**
93. **DUGAN PERSIAN GARDEN LG. I.C. SHAPED BOWL AND
BASE – WHITE (ANOTHER VERY SCARCE AND DESIRA-
BLE ITEM; GREAT IRID.)**
94. 6 ½" Dugan Persian Garden Plate with Pool of Pearls
Ext. – White (scarce with super irid.)
95. **10" DUGAN PETAL AND FAN LG. I.C. SHAPED
BOWL WITH J.H. EXT. – WHITE (TOUGH ITEM TO
FIND; GREAT SHAPE AND IRID.)**
96. Dugan Leaf Rays Handled Nappy - White (nice irid.)
97. 4" Tall Dugan Vining Twigs 6 Ruffled Vase – White
(almost a hat shape; scarce with nice irid.)
98. Dugan Constellation Stemmed 6 Ruffled Compote –
White (great irid.)
99. Dugan Paneled Cherries 3 ftd. 10 Ruffled Bowl with
Enam. Floral Decor. – P. Opal (scarce with nice irid.)
100. **DUGAN GOD AND HOME 7 PC. WATER SET – BLUE
(VERY RARE AND VERY DESIRABLE SET; NOT OFTEN
SOLD)**

101. **DUGAN STORK IN THE RUSHES MUG – BLUE (RARE BASE COLOR WITH GREAT COLOR AND DETAIL)**
102. Dugan Stork in the Rushes Handled Mug – Amyth. (really nice example of this color)
103. Dugan Beaded Shell Handled Mug – Blue
104. Dugan Beaded Shell Handled Mug – Mari. (scarce color)
105. **DUGAN BEADED SHELL HANDLED MUG – WHITE (VERY SCARCE AND DESIRABLE; FROSTY WITH EXCELLENT IRID.)**
106. **DUGAN FISHERMAN'S HANDLED MUG – P. OPAL. (EXTREMELY DESIRABLE; REALLY NICE OPAL.)**
107. Dugan Fisherman's Handled Mug – Mari. (scarce; nice color)
108. Dugan Fisherman's Handled Mug – Lt. Amyth. (scarce base color; tough variation)
109. **DUGAN HERON HANDLED MUG – PURP. (EXCELLENT EXAMPLE; GREAT DETAIL AND IRID.)**
110. **DUGAN MANY FRUITS 9 PC. ROUND PUNCH SET – PURP. (VERY DESIRABLE SET; COMPLETE WITH EXCELLENT IRID.)**
111. Dugan Apple and Pear Oval Ruffled Master Bowl in Frame – Amyth. (scarce)
112. Dugan Apple and Pear Oval Ruffled Master Bowl in Frame – Mari.
113. (3) Dugan Fisherman's Handled Mugs – Purp. (selling 3 times the money)
114. 8 ¾" Dugan Windflower Flat Plate – Blue (satiny and nice)
115. **DUGAN GRAPEVINE LATTICE TANKARD WATER PITCHER AND (3) TUMBLERS – PURP. (RARE AND VERY DESIRABLE; ALL ITEMS HAVE EXCELLENT BUT DIFFERENT IRID.)**
116. Dugan Grapevine Lattice 7 pc. Tankard Water Set – Mari. (nice, well matched complete set)
117. **6 ¾" DUGAN GRAPEVINE LATTICE LOW RUFFLED PLATE – PURP. (ABSOLUTELY SUPER IRID.; ONE OF THE BETTER EXAMPLES)**
118. 7" Dugan Wishbone and Spades Flat Plate – Purp (scarce with really nice color and irid.)
119. 6 ½" Dugan Petal and Fan Crimped Edge Plate – Purp. (sorta ½ gold and ½ multi-colored; scarce)
120. **DUGAN FARMYARD BOWL WITH 3 IN 1 EDGE – PURP. (RARE AND VERY DESIRABLE; ONE OF OLE BILL'S FAVORITES. NOTE: IT DOES HAVE AN OPEN FISSURE AT ABOUT 10 – 11 O'CLOCK THAT WAS FILLED BY EPOXY; WELL DONE AND RARE)**
121. **9 ¼" DUGAN APPLE BLOSSOM TWIGS FLARED PLATE – PURP. (VERY DESIRABLE ITEM WITH EXCELLENT BRIGHT IRID.)**
122. 9" Dugan Apple Blossom Twigs Flared Plate – White (super irid. and really frosty)
123. 9" Dugan Apple Blossom Twig Flat Plate – P. Opal. (nice example with nice opal.)
124. **8 ½" DUGAN BROOKLYN BRIDGE 10 RUFFLED BOWL – MARI. (TYPICAL RADIUM FINISH; NICE EXAMPLE)**
125. **DUGAN CIRCLE SCROLL HANDLED WATER PITCHER – MARI. (VERY RARE & DESIRABLE ITEM; TOUGH PITCHER TO FIND)**
126. 9" Dugan Single Flower Ext. Bowl with 3 in. Decoration – P. Opal. (nice decor.; scarce)
127. 9 ¼" Dugan Single Flower Ext. 10 Ruffled Bow. Enam. Decoration – P. Opal. (scarce)
128. Dugan Jeweled Heart Tumbler – Mari. (nice color)
129. 4 pc. Lot – (1) Dugan Maple Leaf Tumbler; (1) Stork in the Rushes with Lattice Band Tumbler and (2) Vintage Banded Mugs – Mari. (all for 1 money)
130. **DUGAN PEACOCK AT THE FOUNTAIN 7 PC. WATER SET – BLUE (SCARCE & DESIRABLE SET; ABOVE AVERAGE COLOR AND IRID.)**
131. **DUGAN STORK IN THE RUSHES 7 PC. WATER SET – BLUE (RARE SET TO FIND; TOUGH IN THIS COLOR)**
132. Dugan Maple Leaf 7 pc. Water Set – Purp. (scarce and desirable set)
133. Dugan Grape Arbor 4 ftd. Deep Round Bowl with I.F.F. Ext. – Amyth. (excellent example for this item; nice)
134. **DUGAN BUTTERFLY AND TULIP 2 SIDED 4 FTD. BOWL WITH I.F.F. EXT. – MARI. (VERY SCARCE SHAPE WITH A BRIGHT FINISH)**
135. Dugan Stork in the Rushes Handled Mug – Blue Opal. (story to this one...not Carnival but was supposed to be)
136. Dugan Beaded Shell Handled Mug – Purp.
137. N Beaded Cable ftd. Ruffled Rose Bowl – Aqua. Opal. (very scarce)
138. 7 ½" N Wild Strawberry Handgrip Plate with Basketweave Ext. – Green (excellent example)
139. 7 ½" N Wild Strawberry Handgrip Plate with Basketweave Ext. – Dk. Mari. (excellent example)
140. **N PEACOCK AT THE FOUNTAIN 8 PC. PUNCH SET – PURP. (RARE AND ALWAYS VERY DESIRABLE; GREAT COLOR AND DETAIL)**
141. **N PEACOCK AT THE FOUNTAIN FTD. RUFFLED FRUIT BOWL – PURP. (VERY DESIRABLE WITH EXCELLENT COLOR AND IRID.)**
142. **N PEACOCK AT THE FOUNTAIN FTD. RUFFLED FRUIT BOWL – ELEC. BLUE (BRIGHT BLUES AND VERY DESIRABLE; ATTRACTIVE ITEM)**
143. N Peacock Plate with Ribbed Ext. – Ice Green (excellent example; bright irid.)
144. N Stippled Singing Birds Handled Mug – Pop Bottle Aqua (non-irid.)
145. **N SINGING BIRDS HANDLED MUG – AQUA OPAL. (RARE AND DESIRABLE; ONE OF MY FAVORITE CARNIVAL ITEMS)**
146. **N SINGING BIRDS HANDLED MUG – ICE BLUE (VERY RARE AND VERY UNDERPRICED; TOUGH!!!)**
147. **N SINGING BIRDS HANDLED MUG – WHITE (RARE AND VERY UNDERPRICED ITEM; NICE)**
148. **N SINGING BIRDS HANDLED MUG – EMERALD GREEN (RARE & BRIGHT; VERY DESIRABLE)**
149. N Singing Birds Handled Mug – Green / Mari. (scarce)
150. **N STIPPLED SINGING BIRDS HANDLED MUG – GREEN (VERY DESIRABLE; RARE VARIATION IN A RARE COLOR)**
151. **N STIPPLED SINGING BIRDS HANDLED MUG – BLUE (VERY RARE COLOR IN THIS VARIATION; IRID. STAIN ON RIM)**
152. N Singing Birds Handled Mug – Elec. Blue (super and irid.)

- irds Handled Mug – Amyth. with Streaks
(variation)
- Stippled Singing Birds Handled Mug – Purp. (cracked)
- SINGING BIRDS HANDLED MUG – LAVENDER
RARE BASE COLOR; SORTA PASTEL WITH
EXCELLENT IRID.)**
157. N Singing Birds Handled Mug – Dk. Purp. (dark base color; cinder spots)
158. N Stippled Singing Birds Handled Mug – Pastel Mari. (super irid.; very attractive)
159. N Singing Birds Handled Mug – Mari. (nice color)
160. N Stippled Birds Handled Mug – Custard/ Nutmeg (non-iridized)
161. N Stippled Birds Handled Mug – Custard (non-iridized)
162. N Stippled Birds Handled Mug – Luna (rare item; non-iridized)
163. N Peach 7 pc. Berry Set – White (tough set; scarce)
164. N Peach Covered Butter Dish – White (scarce)
165. **N PEACOCK AT THE URN LG. ICE CREAM BOWL – ICE GREEN (RARE AND DESIRABLE; EXCELLENT COLOR AND REALLY NICE IRID.)**
- 166A. **N PEACOCK AT THE URN IND. ICE CREAM BOWL – ICE GREEN (VERY SCARCE)**
- 166B. **N PEACOCK AT THE URN IND. ICE CREAM BOWL – ICE GREEN (VERY SCARCE)**
- 166C. **N PEACOCK AT THE URN IND. ICE CREAM BOWL – ICE GREEN (VERY SCARCE)**
- 166D. **N PEACOCK AT THE URN IND. ICE CREAM BOWL – ICE GREEN (VERY SCARCE)**
- 166E. **N PEACOCK AT THE URN IND. ICE CREAM BOWL – ICE GREEN (VERY SCARCE)**
- 166F. **N PEACOCK AT THE URN IND. ICE CREAM BOWL – ICE GREEN (VERY SCARCE)**
167. N Peacock at the Urn Lg. Ice Cream Bowl – Ice Blue (rare and desirable; great color and irid.)
168. N Peacock at the Urn Lg. Ice Cream Bowl – White (very scarce and desirable; great color and irid.)
169. N Raspberry 7 pc. Water Set – Green (very scarce and desirable set; nice)
170. **N ACORN BURR 8 PC. RUFFLED PUNCH SET – GREEN (RARE & VERY DESIRABLE; NICE SET)**
171. **N ACORN BURR 7 PC. WATER SET – PURP. (TOUGH AND DESIRABLE SET; NICE COLOR)**
172. 10" N G & C Lg. Salad Bowl with P.C.E. & Basketweave Ext. – Purp. (rare shape)
173. 10" N G & C Lg. Salad Bowl with P.C.E. & Basketweave Ext. – Mari. (rare shape - esp. in this color – Tough!)
174. 10" N G & C Lg. Salad Bowl with P.C.E. & Basketweave Ext. – Green (rare shape; tough color)
175. **N G & C FLARED MASTER 14 PC. PUNCH SET – GREEN (EXTREMELY RARE SET ESP. WITH THE FLARED TOP; REALLY, REALLY TOUGH!)**
176. **8 3/4" N G & C VARIANT STIPPLED PLATE WITH "OLD ROSE DISTILLERY" ADV. – GREEN (VERY DESIRABLE ADV. ITEM- FROM CHICAGO)**
- " N G & C VARIANT STIPPLED PLATE WITH RIBBED EXT. BLUE / ELEC. BLUE (RARE COLOR- VERY DESIRABLE; NICE ITEM)**
178. N G & C Odd Shaped ftd. Centerpiece Bowl – Purp. (looks like a Monday item; great irid.)
179. N G & C ftd. Centerpiece Bowl – Mari. (scarce; nice color)
180. **N G & C 2 PC. CANDLE LAMP – GREEN (VERY DESIRABLE AND ONE OF THE MORE ATTRACTIVE EXAMPLES)**
181. **N G & C 2 PC. CANDLE LAMP – MARI. (RARE AND DESIRABLE; REALLY NICE EXAMPLE)**
182. **N G & C 2 PC. CANDLE LAMP – PURP. (VERY DESIRABLE ITEM WITH NICE COLOR AND IRID.)**
183. **N G & C 8 PC. WHISKEY SET – PURP. (RARE SET TO FIND COMPLETE; NICE COLOR AND IRID.)**
184. **8 1/2" N G & C STIPPLED BOWL WITH P.C.E AND RIBBED EXT. – ICE BLUE (VERY DESIRABLE; EXCELLENT EXAMPLE)**
185. **N DANDELION / KNIGHTS TEMPLAR HANDLED MUG – ICE BLUE (RARE AND ALWAYS DESIRABLE; NICE EXAMPLE; THE OLE MAN LOVED HIS MUGS)**
186. **N DANDELION / KNIGHTS TEMPLAR HANDLED MUG – ICE GREEN (RARE AND VERY DESIRABLE ITEM WITH EXCELLENT COLOR AND IRID.)**
187. **N DANDELION HANDLED MUG – AQUA. OPAL. (DESIRABLE ITEM; REALLY NICE OPAL. & IRID.)**
188. **N DANDELION HANDLED MUG – LAVENDER WITH STREAKS (EXTREMELY RARE AND DESIRABLE COLOR VARIATION)**
189. N Dandelion Handled Mug – Purp. (excellent example with bright irid.)
190. **N DANDELION HANDLED MUG – GREEN (AN EXCELLENT EXAMPLE WITH SUPER IRID.)**
191. **N DANDELION HANDLED MUG – BLUE/ ELEC. BLUE (PRETTY DARN TOUGH ITEM- LOOKS NICE!!)**
192. **N DANDELION/ KNIGHTS TEMPLAR HANDLED MUG – MARI. (RARE & DESIRABLE; NICE COLOR)**
193. N Dandelion Handled Mug – Mari. (very scarce; nice irid.)
194. N Dandelion Handled Mug – Custard / Lt. Nutmeg (tough item; pretty good Nutmeg)
195. **N WIDE PANEL 4 LILY EPERGNE – ICE GREEN / LIME ICE GREEN (VERY RARE; SIDE LILIES ARE LIME ICE GREEN; CENTER LILY GLUED TOGETHER)**
196. N Wide Panel 4 Lily Epergne – White (very desirable item; frosty and nice; base has large chip near insert)
197. **N WIDE PANEL 4 LILY EPERGNE – MARI. (LOOKS TO BE IN PRETTY GOOD CONDITION; NICE)**
198. N Rose Show Flared Plate – Blue / Elec. Blue (very scarce; has a dark look; small chip on one rose)
199. N Rose Show 8 Ruffled Bowl – Aqua Opal. (has a pretty good sized crack on one side – still nice)
200. **N ROSE SHOW 8 RUFFLED BOWL – ICE GREEN (RARE & DESIRABLE; NICE COLOR & IRID.)**
201. **N ROSE SHOW 8 RUFFLED BOWL – ICE BLUE (ANOTHER RARE AND DESIRABLE ITEM; REALLY NICE COLOR AND IRID.)**
202. N Rose Show 8 Ruffled Bowl – White (scarce; nice irid.)
203. **N ROSE SHOW 8 RUFFLED BOWL – PURP. (A VERY ATTRACTIVE MULTI-COLORED EXAMPLE)**
204. N Rose Show 8 Ruffled Bowl – Mari. (another very attractive item with excellent irid.)

205. N DANDELION 7 PC. TANKARD WATER SET – GREEN (RARE COLORED SET TO FIND COMPLETE-NICE)
206. N DANDELION 7 PC. TANKARD WATER SET WITH RIBBED INT. – PURP. (A BEAUTIFUL SET; ESPECIALLY THE PITCHER; VERY NICE)
207. N Dandelion 7 pc. Tankard Water Set with Ribbed Int. – Mari. (excellent example with nice irid.)
208. N Dandelion Tankard Water Pitcher – Crystal Green / Gold (unusual and not often found; pretty good gold)
209. N Nippon Bowl with P.C.E. and Ribbed Ext. – Ice Blue (very nice example with excellent irid.)
210. 9 1/4" N THREE FRUITS STIPPLED PLATE WITH RIBBED EXT. – AQUA. OPAL. (RARE AND VERY DESIRABLE; NICE IRID. AND NICE OPAL ON EDGE)
211. 9" N THREE FRUITS STIPPLED PLATE WITH RIBBED EXT. – ELEC. BLUE (ONE OF THE BEST EXAMPLES I'VE SOLD; HAS BRIGHT BLUES)
212. 8 7/8" N Three Fruits Plate with Plain Ext. – Purp. (scarce; nice; has a lot of pattern wear)
213. 8 3/4" N Three Fruits Bowl with P.C.E. and Plain Ext. with Enam. Flowers and Etched "Dora-Christmas 1910" – Purp. (odd, unusual item; probably a gift in 1910...ya think?)
214. 9" N POPPY SHOW FLARED PLATE – WHITE (VERY SCARCE; NICE COLOR AND IRID.)
215. 9 1/4" N POPPY SHOW FLARED PLATE – MARI. (VERY SCARCE; VERY ATTRACTIVE EXAMPLE)
216. N SINGING BIRDS 7 PC. WATER SET – GREEN (VERY DESIRABLE SET WITH EXCELLENT COLOR AND IRID.)
217. 9" N Good Luck Plate with Basketweave Ext. – Mari. (very scarce with a satiny finish)
218. 3 3/4" TALL FOSTORIA BROCADED ACORN HANDLED SUGAR BUCKET – LAVENDER (VERY SCARCE ITEM)
219. 3 3/4" Tall Fostoria Brocaded Acorn Handled Sugar Bucket – Ice Blue (another tough piece to find)
220. FENTON G & C FTD. HANDLED BASKET FROM SMALL SIZE FRUIT BOWL – AMYTH. (THESE RARELY COME UP FOR SALE AND VERY FEW SURVIVED; A SUPER RARE FENTON PC.)
221. Fenton G & C Small Size ftd. Ruffled Fruit Bowl with Plain Int. – Amyth. (scarce; nice color)
222. Fenton G & C Small Size ftd. Ruffled Fruit Bowl with Persian Medallion Int. – Amyth. (very scarce; nice color and irid.)
223. Fenton G & C Small Size ftd. Ruffled Fruit Bowl with Persian Medallion Int. – Blue (very scarce; nice color and irid.)
224. FENTON G & C SMALL SIZE FTD. RUFFLED FRUIT BOWL WITH PERSIAN MEDALLION INT. – PASTEL POWDER BLUE (VERY RARE BASE COLOR; HAVEN'T HEARD OF MANY)
225. FENTON G & C SMALL SIZE FTD. RUFFLED FRUIT BOWL WITH PERSIAN MEDALLION INT. – MARI./ VASELINE (VERY RARE AND VERY DESIRABLE BASE COLOR – REALLY NICE)
226. Fenton G & C Small Size ftd. Ruffled Fruit Bowl with Persian Medallion Int. – Green (scarce; nice color irid.)
227. FENTON G & C SMALL SIZE FTD. F PLAIN INT. AND STRAIGHT SIDES – G. SHAPE IN A VERY SCARCE COLOR)
228. Fenton Orange Tree ftd. Hatpin Holder – Blue and irid.)
229. FENTON ORANGE TREE STANDARD FLARED MUG – RED (REALLY RED EXAMPLE – QUITE ATTRACTIVE)
230. FENTON ORANGE TREE ORCHARD 7 PC. BULBOLTER SET – BLUE (RARE AND DESIRABLE SET WITH EXCELLENT COLOR AND IRID.)
231. 9 1/2" Fenton Orange Tree with Trunk Flat Plate – Blue (scarce; nice average color and irid.)
232. 9 1/2" Fenton Orange Tree Flat Plate – White (scarce; nice irid.)
233. 9 1/2" Fenton Orange Tree Flat Plate – Mari. (scarce; nice color and irid.)
234. FENTON CHERRIES OBLONG 4 FTD. BANANA BOAT – BLUE (EXTREMELY RARE FENTON ITEM SO VERY TOUGH TO FIND; HAS A HAIRLINE BY ONE FOOT)
235. 9" FENTON PETER RABBIT 8 RUFFLED BOWL – MARI. (RARE AND VERY DESIRABLE WITH AN EXCELLENT SATINY FINISH)
236. FENTON ENAMELED IRIS/ DIAGONAL BAND 7 PC. WATER SET – BLUE (ACTUALLY QUITE A RARE SET IN THIS COLOR - REALLY TOUGH)
237. FENTON ENAMELED IRIS/ DIAGONAL BAND WATER PITCHER AND (2) TUMBLERS – GREEN (EXCELLENT PITCHER; GREAT COLOR & IRID.)
238. FENTON ENAMELED IRIS / DIAGONAL BAND WATER PITCHER AND (4) TUMBLERS – MARI. (ANOTHER EXCELLENT EXAMPLE; SUPER)
239. 9 1/2" FENTON HEART AND VINE FLAT PLATE – BLUE (SUPER BRIGHT IRID. – REALLY NICE)
240. 9 5/8" FENTON PEACOCK AT THE URN FLAT PLATE – BLUE (ABSOLUTELY SUPER EXAMPLE WITH A RADIUM TYPE FINISH)
241. 9 1/4" Fenton Peacock at the Urn Flat Plate – Mari. (scarce; nice color)
242. 9 1/2" FENTON PEACOCK AT THE URN FLAT PLATE – WHITE (SUPER IRID; DESIRABLE)
243. FENTON BUTTERFLY AND BERRY 7 PC. WATER SET – BLUE (SUPER IRID; VERY DESIRABLE)
244. FENTON ENAMELED SHASTA DAISY (?) 7 PC. WATER SET – MARI. (SUPER RARE SET WITH A RARE SHAPED PITCHER)
245. 9 1/2" FENTON HOLLY FLARED PLATE – AMYTH. (VERY SCARCE AND DESIRABLE; DON'T SEE MANY FOR SALE)
246. 9 1/2" FENTON HOLLY FLARED PLATE – GREEN (RARE COLOR; TOUGH TO FIND)
247. 9" Fenton Holly Bowl with 3 in 1 Edge – Odd Amber (rare color in a rare shape; nice)
248. 7 3/4" Fenton Leaf Chain Flat Plate – Blue (nice satiny finish)
249. 7 3/4" Fenton Leaf Chain Flat Plate – Mari. (another with nice dark satiny finish)
250. FENTON FORGET-ME-NOT PRISM BAND 5 PC WATER SET ENAM. DECORATED – BLUE (RARE AND VERY DESIRABLE; SUPER COLOR AND

- FORGET-ME-NOT PRISM BAND 7 PC.
R SET ENAM. DECORATED - AMYTH. (RARE
VERY DESIRABLE; SUPER COLOR AND IRID.)
FENTON FORGET-ME-NOT PRISM BAND 7 PC.
WATER SET ENAM. DECORATED - MARI.
(VERY DESIRABLE SET; NICE COLOR AND IRID.)
FENTON FORGET-ME-NOT ENAM. TANKARD
WATER PITCHER WITH NO PRISM BAND AND
PRISM BAND TUMBLERS - MARI. (RARE
VARIATION; WITH NICE COLOR)
254. FENTON FORGET-ME-NOT TANKARD CYLINDER
SHAPED - MARI. (VERY RARE VARIATION; GREAT
COLOR)
255. FENTON ENAMELED "SILVER QUEEN" BULBOUS
WATER PITCHER WITH INTERIOR DRAPE - MARI.
(VERY RARE VARIATION OF THIS ENAMELED
DECORATION)
256. (2) Enameled Prism Band Tumblers - Blue (selling 2
times the money)
257. FENTON ENAMELED DECORATED TANKARD
WATER PITCHER - DK. MARI. (RARE WITH GREAT
COLOR AND IRID.)
258. 9 1/2" Dugan Enameled Decorated Paneled Swung Vase
- Mari. (odd item; different)
259. 8 1/2" Dugan Lined Lattice Enameled Decorated Swung
Vase - Mari. (scarce; nice enameled decorated)
260. FENTON ENAMELED MAGNOLIA 6 PC. TABLE SET -
MARI. (where would you go and pick one up of these?)
261. Fenton Stippled Rays 5 pc. Berry Set with Enam.
Magnolia Decoration - Mari. (how many have you seen?)
262. FENTON ENAMELED "ORCHID" (?) TANKARD
WATER PITCHER - MARI. (SUPER COLOR &
IRID.)
263. N'WOOD ENAMELED DAISY 7 PC. TANKARD
WATER SET - MARI. (VERY RARE AND DESIRABLE
SET; NICE)
264. FENTON ENAMELED FREESIA 6 PC. TANKARD
WATER SET - MARI. (RARE & DESIRABLE SET;
NICE)
265. 9" TALL FENTON BUTTERFLY AND BERRY SWUNG VASE
- RED (RARE AND DESIRABLE; SUPER RED AND NICE)
266. 9" TALL FENTON BUTTERFLY AND BERRY SWUNG VASE
- RED (RARE AND DESIRABLE; SUPER RED AND NICE)
267. 8 1/2" Tall Fenton Butterfly and Berry Swung Vase - Amber
(rare base color; tough to find)
268. FENTON BUTTERFLY AND BERRY HANDLED WATER
PITCHER - GREEN (RARE COLOR AND DESIRABLE;
NICE)
269. (3) Fenton Butterfly and Berry Tumblers - Green (selling 3
times the money)
270. FENTON BUTTERFLY AND BERRY 7 PC. WATER SET -
BLUE (RARE SET; NICE COLOR AND IRID.)
271. 8" Tall Fenton Butterfly and Berry Swung Vase with Enameled
Floral Decor. - Mari. (really different; nice decor.)
272. 13 1/2" Tall Fenton Fine Rib Mid-Size Swung Vase - Amber
(scarce color; nice size)
12 1/4" Tall Fenton Fine Rib Mid-Size Swung Vase - Amber
(scarce color; nice size)
1 1/8" Fenton Pine Cone Plate with Paneled Ext. - Green
(scarce item in a scarce color with gold highlights)
275. 7 1/2" Fenton Horsehead Medallion Flat Plate - Mari. (scarce;
nice satiny finish)
276. 7 1/4" Fenton Horsehead Medallion 6 Ruffled Bowl - Blue (very
scarce; nice color and detail)
277. 7 3/8" Fenton Vintage Grape Flat Plate - Green (nice; really
bright irid.)
278. 7 3/8" Fenton Vintage Grape Flat Plate - Blue (nice color and
irid.)
279. 7 1/2" Fenton Vintage Grape Flat Plate - Mari. (nice satiny ex-
ample)
280. 6 1/4" TALL PAIR FENTON STRETCH #249 "PORTLY" CAN-
DLESTICKS WITH GOLD TRIM - RED (EXTREMELY RARE
PAIR OF CANDLESTICKS)
281. 6 1/4" TALL PAIR FENTON STRETCH #249 "PORTLY" CAN-
DLESTICKS - TOPAZ (ANOTHER RARE PAIR)
282. 6 1/4" Tall Pair Fenton Stretch #249 "Portly" Candlesticks -
Florentine Green (scarce pair)
283. 6 1/4" Tall Pair Fenton Stretch #249 "Portly" Candlesticks -
Persian Pearl (very scarce pair)
284. 6 1/4" Tall Pair Fenton Stretch #249 "Portly" Candlesticks -
Celeste Blue (another scarce pair)
285. 6 1/4" Tall Pair Fenton Stretch #249 "Portly" Candlesticks -
Grecian Gold (another tough pair)
286. PR. 4 3/8" TALL HEISEY 6 PANELED CHILDS CANDLE-
STICKS - LT. MARI. (CUTE PAIR; SIGNED WITH DIAMOND
H.)
287. 12 1/2" Fenton Stretch Interior Ripple or "Cameo" Mid-Size
Swung Vase with Deco Enameled Decoration - Ice Blue
288. 8" Fenton Stretch Cupped Rose Bowl with Enam. Floral Decor.
- Ice Green (nice decor.)
289. 3 3/4 - 4" Fenton Stretch Cupped Mini Rose Bowl - Ice
Green
290. FENTON DOLPHIN STRETCH MASTER SALT DIP -
CELESTE BLUE (EXTREMELY RARE AND VERY
DESIRABLE; PERFECT!)
291. FENTON DOLPHIN STRETCH MASTER SALT DIP -
FLORENTINE GREEN (EXTREMELY RARE AND
VERY DESIRABLE; PERFECT!)
292. Fenton Stretch 2 pc. Tumble Up - Ice Green (scarce;
nice)
293. FENTON STRETCH IND. NUT CUP - WISTERIA
(RARE AND TOUGH TO FIND IN THIS COLOR)
294. Fenton Stretch ind. Nut Cup - Topaz (very desirable)
295. Fenton Stretch ind. Nut Cup - Florentine Green (scarce)
296. Fenton Stretch ind. Nut Cup with Enam. Butterflies -
Celeste Blue (neat decoration)
297. Fenton Stretch ind. Nut Cup - Celeste Blue
298. Fenton Stretch ind. Nut Cup - Grecian Gold (bruise on
edge)
299. Fenton Pastel Swan Master Salt - Vaseline Opal. (nice
color and opal.)
300. Fenton Pastel Swan Master Salt - Green Opal.
301. Fenton Pastel Swan Master Salt - Blue Opal.
302. Fenton Pastel Swan Master Salt - Ice Green



Lot 40



Lot 35



Lot 53



Lot 105



Lot 140



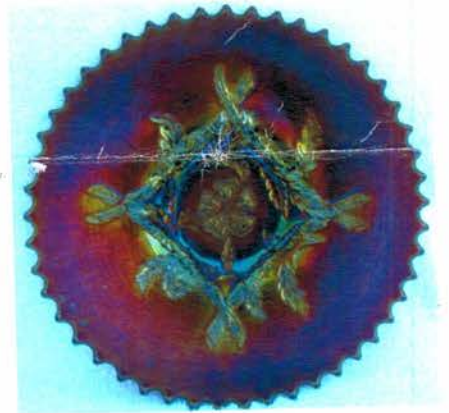
Lot 106



Lot 211



Lot 57



Lot 121



Lot 180



Lot 58



Lot 182

ALD DORAIS
HIGHLAND AVENUE
UMBERLAND, RI 02864

BURNS
AUC ON SERVICE



Visit www.necga.com for pictures and brochure, Click on carnival glass links page, Look for Burns Auction. AUCTION FLEX AVAILABLE FOR THIS AUCTION AND CHECK US OUT ON AUCTION ZIP #29661.

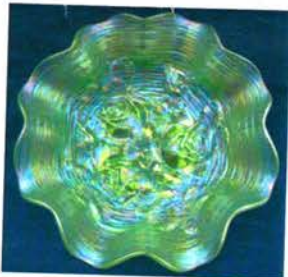
LEE MARKLEY
BOX 306
MENTONE, IN 46539



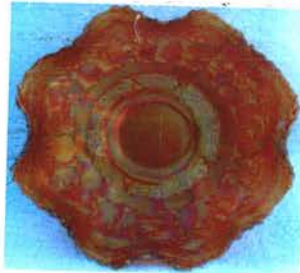
Lot 34

CARNIVAL GLASS AUCTION SATURDAY, MAY 31st AT 9:30 A.M.

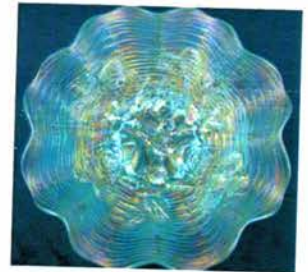
4656980306 3004



Lot 200



Lot 235



Lot 201



Lot 290



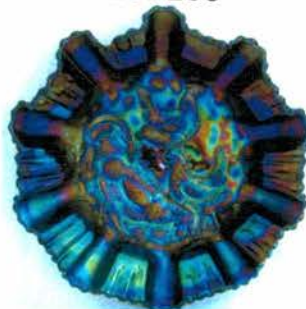
Lot 280



Lot 291



Lot 175



Lot 120



Lot 170