

Heart of America
Carnival Glass Association Convention

Carnival Glass 2014 AUCTION

Saturday,
May 3, 9:30 a.m.

Embassy Suites Airport Hotel
Kansas City, Missouri

17

23

123

75

100

50

10

15

JIM & JAN SEECK

Seeck Auctions

641-424-1116

To view the complete auction, check our website at: www.seeckauction.com

JIM & JAN SEECK

CARNIVAL GLASS AUCTION

641-424-1116

Saturday, May 3, 2014 — 9:30 AM

Heart of America Carnival Glass Association Convention

Embassy Suites Airport Hotel

7640 NW Tiffany Springs Parkway

Kansas City, Missouri

NO BUYER'S PREMIUM—OPEN TO THE PUBLIC

ABSENTEE BIDDING is available on-line through Auction Flex using our online catalog at www.seeckauction.com

★ **Absentee bidding closes Fri., May 2 at 6 p.m. CST**

Please email us and we will put you on our email mailing list for auction notices.

e-mail: jimjan@seeckauction.com

The Tom and Ann Bumpass Collection ♦ *The Beverly Franzen Collection*

The HOACGA convention auction this year is the combined collections of glass from Tom and Ann Bumpass of Texas and Beverly Franzen of Oregon. Both are long time collectors and have wonderfully rare and unusual items to offer in this years

Lodging

For hotel reservations call 816-891-7788 and mention the HOACGA Convention for special rates. If you have problems registering, call Bob Grissom at: 816-356-5320.

auction. We've known Bev, Ann & Tom for many years and are very pleased to be auctioning their glass. It will once again be a fun and exciting auction. Attend the HOACGA convention, we guarantee you will have a very educational and enjoyable time!

HOACGA Convention Information

Visit the Heart of America Carnival Glass Association on the Internet at: WWW.HOACGA.COM

Terms: Cash or Check, VISA, MasterCard & Discover accepted w/proper ID. 4% Clerking Fee on all purchases made using credit cards. Announcements made day of sale take precedence over any printed information.

We have 3 options for absentee bidding for our live auctions:

1) If you **DO NOT** have internet access, you can: Call us by phone to enter your bids at (641)424-1116 **OR** by sending the numbers of the item(s) desired and the amount bid on each to: Seeck Auctions, PO Box 377, Mason City, Iowa 50402. We would prefer you call us with your bids rather than send them in a letter.) We will enter your bids into our online bidding system.

★ Have all written bids in by **Wed., April 30**

2) Enter your bids from our website into our online catalog through the Auction Flex system.

- ◆ **First-time bidders:** Set up your account by creating a user name and password and filling out basic information. You will also need to **register for the auction** which will ask you to enter a valid credit card number. This card will be validated by a one time only charge of \$1 charge to your card. **You will use this user name and password for all our auctions.**
- ◆ You are not required to pay by credit card if you are successful with your online bid. We will let you know what you owe us through an email and you can decide how you would like to pay us.
- ◆ An exciting advantage to online bidding is that you can be notified by email if you are outbid on an item, which lets you increase your bid in time, or bid on something else. **There is a cutoff date and time, for each auction, for entering your bids online.** ★ **Online absentee bidding for this auction closes Friday, May 2 at 6 p.m. CST.**
- ◆ Remember that just because you are the high bidder in the online catalog, this does not mean you have won the item. Your bid still needs to **beat** the floor bidders and live phone bidders. If your high bid lands with a floor bidder during the live auction, the floor bidder takes precedence. You might want to bid higher on a highly desired item for a better chance at winning its absentee bid.
- ◆ If you do not receive an item that sold for less than your bid, assume we canceled your bid because the item had a severe manufacture problem, damage, or was not listed correctly.

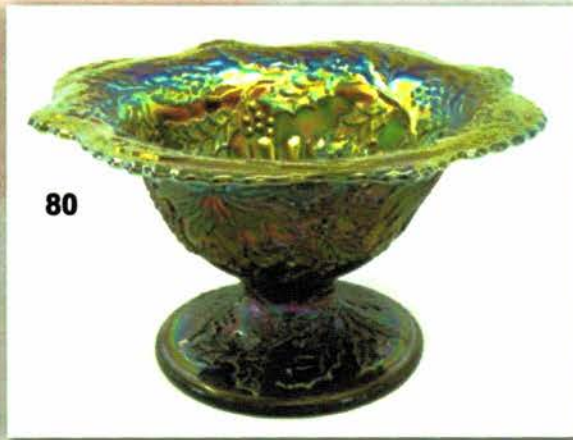
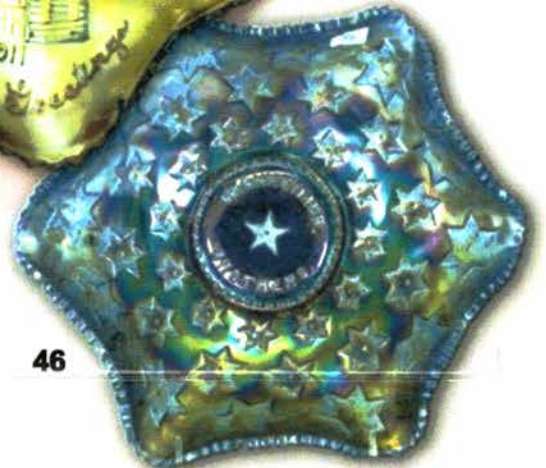
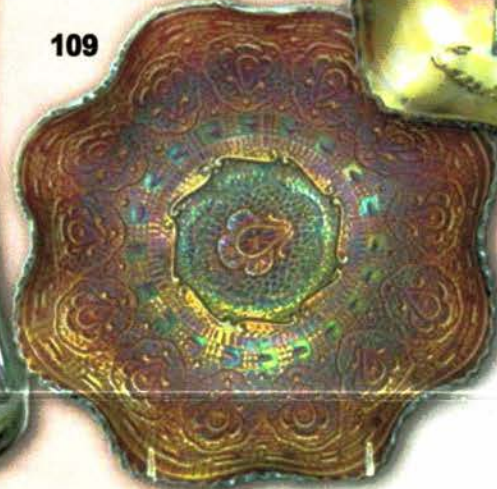
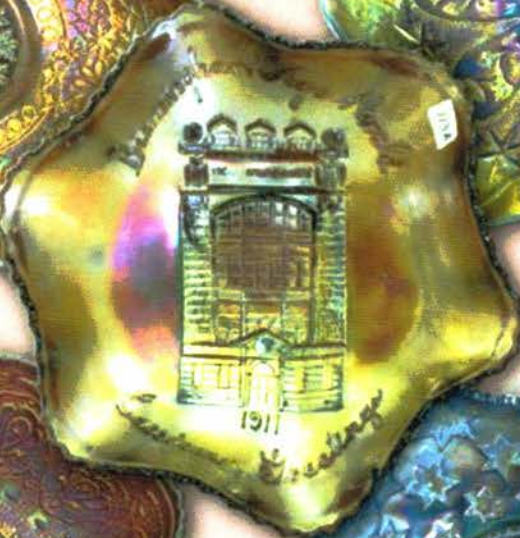
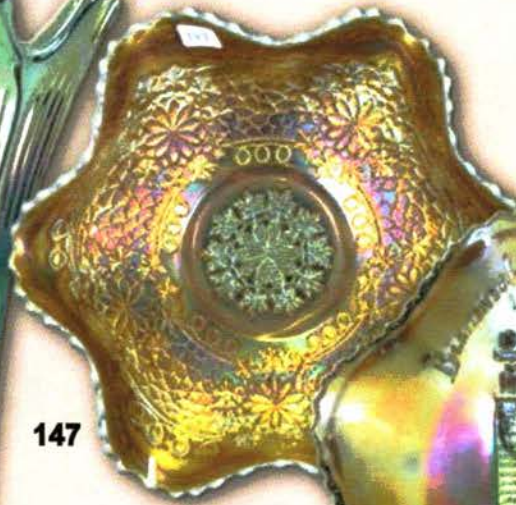
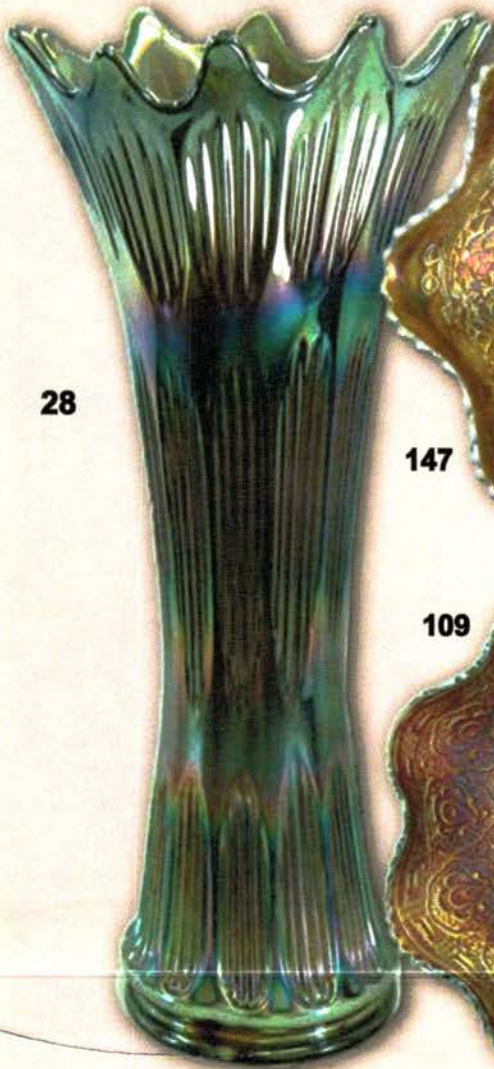
3) **Live phone bidding is available on pieces with an estimated sale price of \$500 or more.** ★ Contact us by the **Thursday before the auction, which is May 1.** We will need to know the lot# and the phone number that you can be reached at on the day of the auction. We also need your home phone number if different than the above number.

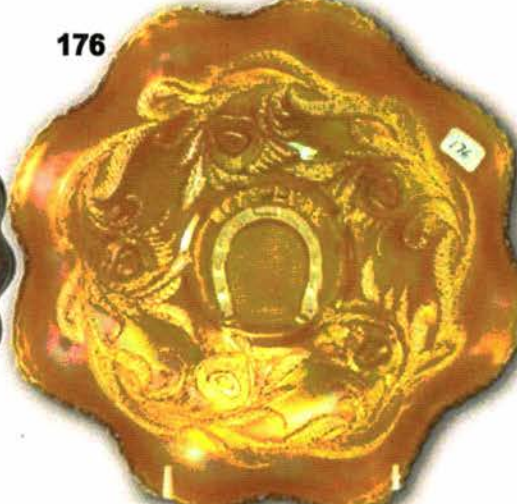
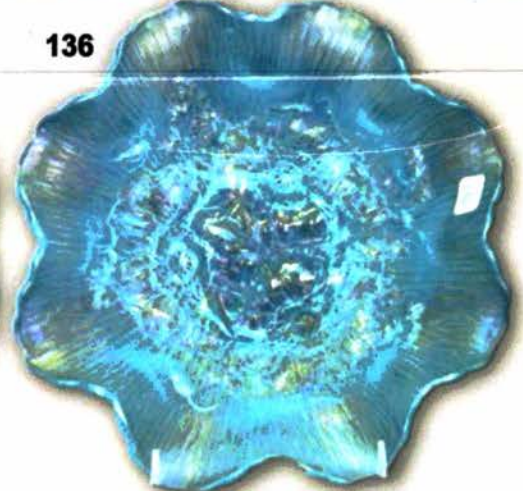
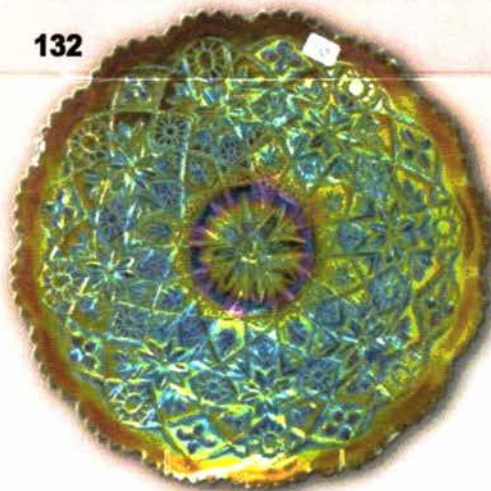
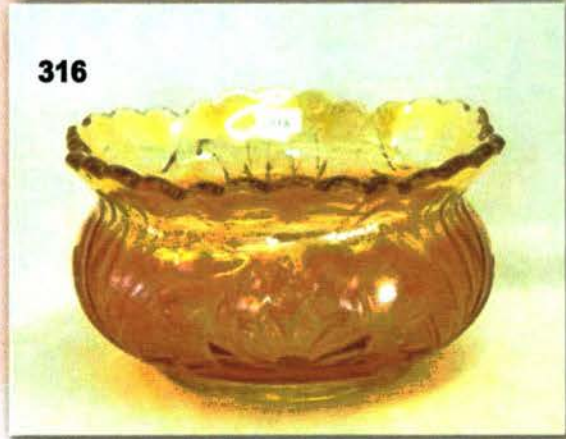
Please call with questions: 641-424-1116.

If you win an online bid you will be notified by phone or e-mail between one to three days after the auction.

There is a **\$7 handling charge for each successful bid, with shipping and insurance charges additional.**

ONLINE BID INCREMENTS: \$1 - \$100/\$5 \$100 - \$200/\$10 \$200 - \$700/\$25 \$700 - \$1,500/\$50
\$1,500 - \$3,000/\$100 \$3,000 - \$5,000/\$250 \$5,000+ Auctioneer's Discretion





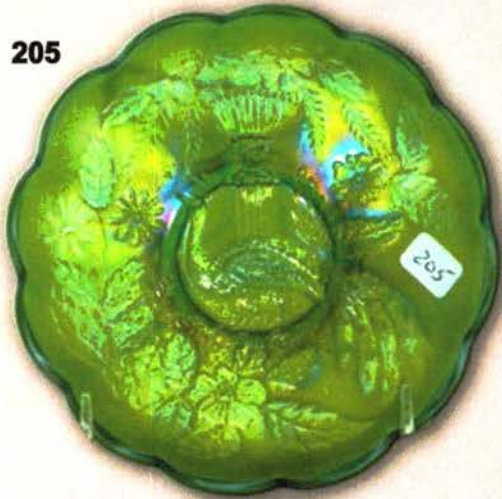
- ___ 1. Optic Flute ruffled compote - purple - bright purple, almost a Wisteria color - kind of a neat color
- ___ 2. Optic Flute ruffled compote - marigold
- ___ 3. Optic Flute spittoon shaped compote - marigold
- ___ 4. Little Barrel - marigold - chips on top edge
- ___ 5. Little Barrel - green - slight roughness around top edge
- ___ 6. Big Basketweave handled basket - blue - scarce color, silvery
- ___ 7. Grape & Cable 7" plate - purple
- ___ 8. Rococo vase - smoke
- ___ 9. Field Thistle 6" plate - marigold
- ___ 10. **M'BURG FLEUR DE LIS DOME FTD SQUARE SHAPED BOWL - VASELINE - absolutely incredible iridescence & color, can tell this is vaseline from a mile away, extreme rarity, typical minor nicks on sawtooth edge on base.**
- ___ 11. Palm Beach pinched in bowl - marigold
- ___ 12. **Imperial match holder - purple - neat novelty piece, outstanding**
- ___ 13. Star of David ruffled bowl - purple - pretty
- ___ 14. Miniature Morning Glory 5" vase - purple - super pretty
- ___ 15. **1912 BPOE PORTLAND ELK'S BELL - BLUE - ONLY ONE KNOWN TO EXIST, EXTREMELY RARE & DESIRABLE, A TOP PIECE IN THE LETTERED CATEGORY OF CARNIVAL GLASS.**
- ___ 16. Star & File 8 pc. wine set - marigold - under tray is non iridized, stopper fits but not sure if correct, one wine with chip
- ___ 17. **GRAPEVINE LATTICE TANKARD WATER PITCHER - PURPLE - RARE, FANTASTIC!**
- ___ 18. **Holly ruffled compote - red - very pretty example, scarce**
- ___ 19. **Big Basketweave 8 1/2" vase - sapphire - rare color, pretty!**
- ___ 20. **CHERRY CIRCLES RUFFLED BONBON - RED - FANTASTIC PIECE OF GLASS, VERY RARE TO FIND IN RED.**
- ___ 21. M'burg Rays & Ribbons ruffled bowl - amethyst - radium, nice
- ___ 22. N's Near Cut water goblet - marigold - scarce, nice
- ___ 23. **M'BURG PIPE HUMIDOR - PURPLE - A CARNIVAL GLASS CLASSIC WITH GREAT IRIDESCENCE, A TOP ITEM IN OUR COLLECTING HOBBY, WOW!**
- ___ 24. Double Stemmed Rose dome ftd 3 in 1 edge bowl - white - nice
- ___ 25. **Rose Show 9" plate - marigold on custard - very, very rare plate, chip on top edge of collar base, couple of minor plate holder nicks on edge, super pretty!**
- ___ 26. **Rose Show 9" plate - green - very rare, pretty**
- ___ 27. Rose Show 9" plate - white - shaped almost as an IC bowl
- ___ 28. **Diamond Rib 18 1/2" funeral vase - green - this is a wonderful vase, so hard to find**
- ___ 29. Sailboat ruffled sauce - red - scarce, very nice
- ___ 30. **Wreath of Roses 10 pc. round punch set - amethyst - has Persian Medallion interior, punch bowl & base are super, 3 cups have minor nicks**
- ___ 31. **Harvest Flower 5 pc. tankard water set - marigold - pitcher is fantastic, rare to find this nice**
- ___ 32. Moon & Stars 8 pc. wine set - marigold - bottom of stopper is damaged
- ___ 33. **PENNY AND GENTLES ADVERTISING DOUBLE HANDGRIP PLATE - PURPLE - ONLY ONE KNOWN IN THIS SHAPE, ONE OF TWO KNOWN WITH THIS ADVERTISING, A GREAT OPPORTUNITY TO BUY ONE OF THE BEST ADV. PIECES OUT THERE.**
- ___ 35. **Stippled Three Fruits 9" plate w/ribbed back - aqua opal - very scarce, nice opal**
- ___ 36. **Stippled Three Fruits 9" plate w/ribbed back - aqua opal - slight butterscotch irid., very pretty**
- ___ 37. **Stippled Three Fruits 9" plate w/ribbed back - horehound - extremely rare plate, a dandy!**
- ___ 38. Stippled Three Fruits 9" plate w/ribbed back - blue - scarce color
- ___ 39. Stippled Three Fruits 9" plate w/ribbed back - marigold
- ___ 40. **Ten Mums tankard water pitcher w/one tumbler - blue - a rare & highly desirable pitcher, pretty**
- ___ 41. Tree Trunk 10 1/2" vase - ice green - scarce, nice
- ___ 42. Tree Trunk 10 1/2" vase - ice blue - scarce, nice
- ___ 43. **Orange Tree round shaped punch bowl & base - green - extremely rare color, pretty**
- ___ 44. Cosmos & Cane 10" ruffled bowl - white
- ___ 45. **Thin Rib & Drape 5" miniature vase - purple - absolutely super, a little cutie!**
- ___ 46. **M'burg Bernheimer Brothers / Many Stars ruffled bowl - blue - satin, rare & desirable**
- ___ 47. **Buzz Saw small size cruet - green**
- ___ 48. Orange Tree loving cup - blue
- ___ 49. Field Flower water pitcher & 1 tumbler - green
- ___ 50. **M'BURG WILDFLOWER RUFFLED COMPOTE - VASELINE - THE ONLY PIECE OF M'BURG VASELINE I PERSONALLY HAVE SEEN WITH NO MARIGOLD OVERLAY, FANTASTIC! BEAUTIFUL PASTEL IRID., WOW! WOW!**
- ___ 51. Basketweave Open JIP basket - red
- ___ 52. **Peacock at the Fountain ruffled compote - ice green - rare color**
- ___ 53. **Peacock at the Fountain ruffled compote - ice blue - rare color, nice**
- ___ 54. **Peacock at the Fountain ruffled compote - white - scarce color**
- ___ 55. **Peacock at the Fountain ruffled compote - blue - nice**
- ___ 56. **Peacock at the Fountain ruffled compote - marigold - nice**
- ___ 57. **Enameled Forget Me Not tankard water pitcher - green - has bands, rare color, nice**
- ___ 58. **Little Flowers 10" IC shaped bowl - red - cherry red color, rare**
- ___ 59. April Showers 7" squatty vase - white - neat little vase
- ___ 60. **POPPY PICKLE DISH - MARIGOLD ON CUSTARD - VERY RARE & HIGHLY DESIRABLE, PRETTY IRID.**
- ___ 61. **Poppy pickle dish - aqua opal - not a lot of opal but has super irid.**
- ___ 62. **Poppy pickle dish - ice blue - rare color, nice**
- ___ 63. **Poppy pickle dish - green - can only describe this as electric & outstanding!**
- ___ 64. **Poppy pickle dish - purple**
- ___ 65. **Poppy pickle dish - marigold**
- ___ 66. **Creole flared out vase - marigold - extremely rare, especially in this shape**
- ___ 67. **Luster Rose ftd fruit bowl - red - very rare, highly desirable, nice**
- ___ 68. Good Luck ruffled bowl w/BW back - green - nice
- ___ 69. **Hobstar & Feather wine - marigold - very rare, cute**
- ___ 70. **ACORN BURRS 8 PC. PUNCH SET - WHITE - SUPER PRETTY, VERY RARE**
- ___ 71. **Acorn Burrs 8 pc. punch set - green - also a beautiful set**
- ___ 72. Golden Harvest 7 pc. wine set - amethyst - maybe as pretty of a bottle that I have ever seen

- ___ 73. Basketweave Open Edge turned in rose bowl shape - red- unusual shape
- ___ 74. Heavy Vine 5" wine, 6 1/4" & 6 3/4" stemmed goblets - marigold
- ___ 75. **M'BURG ROSE COLUMNS VASE - GREEN - SUPER VASE W/NICE IRID., HIGHLY DESIRABLE, ONE OF MY FAVORITES**
- ___ 76. Dugan Cherries crimped edge 7" plate - purple - pretty
- ___ 77. **M'burg Feather & Heart water pitcher - green - scarce, nice**
- ___ 78. **Open Rose 9" plate - purple - rare color, pretty**
- ___ 79. M'burg Nesting Swan ruffled bowl - marigold - radium, nice
- ___ 80. **Christmas compote - purple - a Carnival Classic, pretty**
- ___ 81. Nippon ruffled bowl w/BW back - marigold - dark, nice
- ___ 82. Lined Lattice 10" vase - purple - nice
- ___ 83. Halloween decanter & shot glasses - marigold w/black bands
- ___ 84. Brocaded Acorn cornucopia shaped ftd centerpiece bowl - ice blue - scarce shape
- ___ 85. **M'BURG CLEVELAND MEMORIAL ASHTRAY - AMETHYST - SUPER RARE & HIGHLY DESIRABLE**
- ___ 86. **Pony 6 ruffled bowl - aqua - rare color, nice**
- ___ 87. Butterfly & Fern water pitcher & one tumbler - amethyst - very pretty
- ___ 88. **Hearts & Flowers ruffled bowl w/ribbed back - ice green - scarce**
- ___ 88a. Hearts & Flowers ruffled bowl w/ribbed back - marigold - pretty
- ___ 89. Ripple 15" vase - purple - 3 7/8" base, nice
- ___ 90. Ripple 9" vase - purple - 3 3/8" base, pretty
- ___ 91. Ripple 10" vase - purple - 2 7/8" base, pretty
- ___ 92. **N's Town Pump - marigold - dark, super, rare color!**
- ___ 93. N's Town Pump - purple - scarce, very minor pinpoint on base
- ___ 94. Sunflower spt ftd ruffled bowl - purple - super pretty
- ___ 95. Star & Fan 8 pc. cordial set - marigold - hard to find with tray
- ___ 96. **Dragon & Lotus IC shaped bowl - red - scarce**
- ___ 97. Grape & Cable cracker jar - purple
- ___ 98. **Peacock at the Fountain 8 pc. punch set - marigold - super pretty set, hard to find**
- ___ 99. Brocaded Acorn fan shaped 8 3/4" ftd vase - ice blue - nice
- ___ 100. **M'BURG HONEYCOMB & HOBSTAR 8 1/2" VASE - PURPLE - A SUPER RARITY, VERY FEW KNOWN & FANTASTIC, WOW!!**
- ___ 101. Chesterfield sherbet - red
- ___ 102. **M'burg Marilyn 5 pc. water set - marigold - pitcher is very pretty**
- ___ 103. **Luster Rose ftd round fruit bowl - purple - super pretty, a beauty!**
- ___ 104. **Iris ruffled compote - white - scarce color**
- ___ 105. Iris ruffled compote - blue
- ___ 106. Captive Rose 9" plate - green - very pretty example
- ___ 107. Persian Garden ruffled fruit bowl & base - purple - scarce & desirable, manufacture peeling on top edge of base
- ___ 108. Regal Cane decanter & 1 wine - marigold - wine has chip on base
- ___ 109. **Persian Medallion ruffled bowl - red - very rare bowl, nice**
- ___ 110. **Paneled Dandelion 5 pc. tankard water set - green - very pretty, scarce**
- ___ 111. Blackberry Spray JIP CRE hat - red - nice
- ___ 112. **M'BURG LITTLE STARS 7" RUFFLED BOWL - BLUE - SUPER PRETTY SATIN IRID., EXTREMELY RARE**
- ___ 113. **Heavy Vine 8 pc. dresser set - marigold - under tray is Holiday & Bows, rare to find this many pieces**
- ___ 113a. 1911 Birmingham Age Herald 6 ruffled bowl - amethyst - a very rare lettered piece
- ___ 113b. Chesterfield candlesticks - red - rare, nice
- ___ 113c. **Many Fruits round shaped 8 pc. punch set - purple-scarce set**
- ___ 114. **Stippled Peacocks 9" plate w/ribbed back - blue - super pretty**
- ___ 115. **Stippled Peacocks 9" plate w/ribbed back - marigold - pretty**
- ___ 116. M'burg Fleur de Lis collar based 10" IC shaped bowl - amethyst - radium
- ___ 117. Diamond Lace water pitcher & 1 tumbler - purple - nice
- ___ 118. **Dandelion Knights Templar mug - ice green - very rare mug**
- ___ 119. **Dandelion Knights Templar mug - ice blue - rare**
- ___ 120. Dandelion Knights Templar mug - marigold - nice
- ___ 121. Dandelion mug - purple - pretty
- ___ 122. Dandelion mug - marigold - nice
- ___ 123. **FROSTED BLOCK SPITTOON - MARIGOLD - A VERY UNIQUE ITEM, DID NOT EVEN KNOW THIS EXISTED, LOOKS LIKE IT WAS MADE FROM AN 8" BOWL, COOL ITEM!**
- ___ 124. **Circle Scroll 7 1/2" vase - purple - neat vase**
- ___ 125. **Venetian rose bowl - green - very scarce, highly desirable**
- ___ 126. Imperial Grape 11" ruffled bowl - purple - pretty
- ___ 127. Four Seventy Four 3" cordial - marigold - what a cute miniature, rare
- ___ 128. **Butterfly & Tulip square shaped bowl - purple - fantastic irid. on this piece, this one is turned up more than normal, unique shape, typical minor nicks on ribs on feet**
- ___ 129. N's Eight sided bushel basket - white - nice
- ___ 130. **Turtle w/snail covered dish - marigold - only one I've seen, from the Leonard collection, fantastic novelty piece!**
- ___ 131. Prism & Stars 8 pc. cordial set w/tray - marigold - rare set
- ___ 132. **Hattie chop plate - purple - super pretty, rare**
- ___ 133. Fenton Stretch Glass 7 pc. water set w/lid - ice green
- ___ 134. Leaf Columns 10" vase - ice blue - scarce color
- ___ 135. **Poppy Show ruffled bowl - ice green - rare color, nice**
- ___ 136. **Poppy Show ruffled bowl - ice blue - nice, scarce**
- ___ 137. **Poppy Show ruffled bowl - white - nice irid.**
- ___ 138. **Poppy Show ruffled bowl - purple - a beauty!**
- ___ 139. **M'burg Seacoast pin tray - marigold - rare color**
- ___ 140. **M'burg Seacoast pin tray - green - typical minor nick on back edge**
- ___ 141. Orange Peel 5 pc. punch set - aqua - rare color, has minor nick on bottom of base
- ___ 142. Australian Kookaburra 10" ruffled bowl - purple - scarce
- ___ 143. Stippled Strawberry PCE bowl w/ribbed back - marigold
- ___ 144. **Dandelion 7 pc. tankard water set - green - scarce color, one tumbler has chip**
- ___ 145. **Caroline 3 in 1 edge bowl - blue opal - rare color, can't say I've seen one in a while**
- ___ 146. Smooth Panels 8" vase - red - stretchy, pretty
- ___ 147. **LEAF CHAIN 6 RUFFLED BOWL - PEACH OPAL - ONLY ONE I KNOW OF, VERY PRETTY**

- ___ 148. **Apple Blossom Twigs 3 in 1 edge bowl - purple - pretty**
- ___ 149. Checkerboard water goblet - marigold - scarce
- ___ 150. **Milady tankard water pitcher - blue - super pretty example, nice!**
- ___ 151. Chesterfield breakfast set - red - nice
- ___ 152. **M'burg Trout & Fly IC shaped bowl - green - radium, very hard to find in radium**
- ___ 153. **M'burg Trout & Fly IC shaped bowl - amethyst - satin, pretty**
- ___ 154. Four Seventy Four 8 pc. punch set - marigold
- ___ 155. **Homestead chop plate - purple - very scarce, nice**
- ___ 156. Enameled Periwinkle water pitcher - marigold
- ___ 157. **Wishbone & Spades chop plate - purple - very scarce, highly desirable**
- ___ 158. Field Thistle lg compote - marigold
- ___ 159. Birds & Cherries ruffled compote - amethyst
- ___ 160. **Fanciful 9" plate - purple - very pretty**
- ___ 161. **Fanciful 9" plate - blue - nice for a blue one**
- ___ 162. **Fanciful 9" plate - white - pretty**
- ___ 163. N's Thin Rib 12" vase - ice blue - scarce color
- ___ 164. **Grape & Cable master IC bowl - purple - a nice one**
- ___ 165. **Hearts & Flowers ruffled compote - ice green - scarce color**
- ___ 166. **Hearts & Flowers ruffled compote - ice blue - also scarce**
- ___ 167. **Hearts & Flowers ruffled compote - white**
- ___ 168. Hearts & Flowers ruffled compote - aqua opal - butterscotch, nice
- ___ 169. Hearts & Flowers ruffled compote - blue
- ___ 170. Hearts & Flowers ruffled compote - purple
- ___ 171. Hearts & Flowers ruffled compote - marigold - pretty
- ___ 172. **Poppy Show 9" plate - blue - a bit silvery, rare plate**
- ___ 173. **Poppy Show 9" plate - marigold - very, very minor nick on poppy, pretty**
- ___ 174. Dugan Peacock at the Fountain 5 pc. water set - blue - bead in bottom pattern is chipped
- ___ 175. Jacobean Ranger decanter - marigold - scarce
- ___ 176. **Fenton's Good Luck/Heart & Horseshoe ruffled bowl - marigold - rare, nice**
- ___ 177. Strawberry 9" plate w/BW back - marigold
- ___ 178. **N's Wide Panel epergne - purple - very pretty, typical minor nick around one hole**
- ___ 179. **N's Wide Panel epergne - green - scarce, minor nick on top of base**
- ___ 180. N's Wide Panel epergne - marigold - one small nick around hole of small lily, big lily has damage around bottom
- ___ 181. Lattice & Daisy 8 1/2" vase - purple - very pretty
- ___ 182. **Fenton's Grape & Cable ball ftd 8" ruffled bowl - red - cherry red color, rare piece & nice**
- ___ 183. Brooklyn Bridge 6 ruffled bowl - marigold - scarce
- ___ 183a. **Covered Frog - ice green - very scarce & highly desirable item, neat!**
- ___ 184. Concord ruffled bowl - amethyst - nice
- ___ 185. Concord ruffled bowl - marigold
- ___ 186. **N's Peacock at Urn chop plate - purple - very rare, highly desirable**
- ___ 187. Grape & Cable hatpin holder - purple - pretty
- ___ 188. Grape & Cable hatpin holder - marigold - nice
- ___ 189. M'burg Seaweed 10" 3 in 1 edge bowl - amethyst - satin, nice
- ___ 190. Tree Trunk mid-size 13" vase - white - rare
- ___ 191. **Peacocks PCE bowl w/ribbed back - purple - pretty**
- ___ 192. **Peacocks PCE bowl w/ribbed back - green - scarce color, pretty**
- ___ 193. Peacocks PCE bowl w/ribbed back - blue - a bit silvery
- ___ 194. **Holly IC shaped bowl - red - very rare bowl in the IC shape, not many known**
- ___ 195. M'burg Primrose ruffled bowl - marigold - radium
- ___ 196. **Acorn Burrs water pitcher - purple - scarce**
- ___ 197. Butterfly & Tulip round bowl - marigold - nice example
- ___ 198. Pansy ruffled bowl - purple
- ___ 199. Palm Beach rose bowl - white w/silver rim - has Gooseberry interior
- ___ 200. **M'burg Hanging Cherries 7 1/2" plate - marigold - satin & super, very rare piece**
- ___ 201. Diamond & Sunburst 4 pc. wine set - purple - rare set, nice
- ___ 202. **Embroidered Mums ruffled bowl w/ribbed back - blue**
- ___ 203. **Embroidered Mums ruffled bowl w/ribbed back - marigold - super**
- ___ 204. Grape & Cable cologne bottle - purple - nice
- ___ 205. **N's Peacock at Urn IC sauce - green - rare color to find, nice**
- ___ 206. **N's Peacock at Urn IC sauce - ice blue - scarce color**
- ___ 207. **N's Peacock at Urn IC sauce - white**
- ___ 208. N's Peacock at Urn IC sauce - blue - nice
- ___ 209. N's Peacock at Urn IC sauce - purple - nice
- ___ 210. N's Peacock at Urn IC sauce - marigold - pretty
- ___ 211. **Stippled Grape & Cable Variant 9" plate w/ribbed back - sapphire - rare color w/pretty irid.**
- ___ 212. Heavy Vine tumble up or guest set - marigold - very scarce
- ___ 213. **Grape & Cable round 8 pc. punch set - purple - a dandy set**
- ___ 214. Colonial Loop cordial - marigold - cute
- ___ 215. **Floral & Optic ftd cake plate - red - pretty, stretchy irid., quite rare**
- ___ 216. Freefold 11 1/2" vase - purple - nice
- ___ 217. **Double Stemmed Rose dome ftd ruffled bowl - celeste blue - very pretty w/stretchy irid., hard to find**
- ___ 218. **M'burg Trout & Fly 3 in 1 edge bowl - green - satin, nice**
- ___ 219. **M'burg Trout & Fly 3 in 1 edge bowl - marigold - also satin & nice**
- ___ 220. **Oriental Poppy 7 pc. tankard water set - purple - very pretty set**
- ___ 221. Chesterfield giant compote - red - stretchy
- ___ 222. **E.A. Hudson Furniture Co. advertising 6" plate - purple - rare plate, nice**
- ___ 223. Plaid deep round bowl - green - unusual shape, nice
- ___ 224. N's Peacock at Urn master IC bowl - purple - scarce, nice
- ___ 225. **Dahlia water pitcher - marigold - scarce, nice**
- ___ 226. **Dozen Roses ftd round bowl - purple - very scarce bowl, nice**
- ___ 227. Blackberry Open Edge ruffled hat - red
- ___ 228. **Spector's Department Store/Heart & Vine 9" plate - marigold - scarce, nice**
- ___ 229. Tree Trunk 7" squatty vase - purple - nice
- ___ 230. **Peter Rabbit ruffled bowl - marigold - highly desired pattern, rare**
- ___ 231. **Fashion punch cup - red - where's the punch bowl?**
- ___ 232. **M'burg Whirling Leaves square shaped crimped edge bowl - amethyst - radium, nice & rare**
- ___ 233. Lattice & Daisy 7 pc. tankard water set - marigold - nice

- ___ 234. Panther ftd ruffled sauce - red - always in demand, nice
- ___ 235. Zippered Heart 5 pc. ruffled berry set - purple - pretty set, one sauce has burst in base
- ___ 236. N's Corn vase w/stalk base - ice green - pretty
- ___ 237. Apple Blossom Twigs 9" plate w/smooth edge - purple - pretty
- ___ 238. Vintage 7" round bowl - aqua opal - very rare color, an unusual aqua opal piece to add to your collection
- ___ 239. Vintage 7" round bowl - amethyst opal - very rare color in anything, nice
- ___ 240. Lotus & Grape 9" plate - green - very rare & desirable
- ___ 241. Fenton Stretch Glass punch bowl & base - red - iridized inside & outside the bowl, very rare, nice
- ___ 242. M'burg Whirling Leaves ruffled bowl - amethyst - radium
- ___ 243. Star & File cordial - marigold - cute, cute
- ___ 244. Imperial Flute small size water pitcher - purple - very rare, only the second I've seen
- ___ 245. Berry Band & Ribs 9 pc. wine set - marigold - scarce set, one wine damaged
- ___ 246. We Use Broecker's Flour 6" advertising plate - purple - very rare advertising piece
- ___ 247. M'burg Strawberry Wreath 10" IC shaped bowl - green - radium
- ___ 248. Field Thistle 10" flat plate - marigold
- ___ 249. M'burg Peacock IC sauce - blue - rare color for these, satin
- ___ 250. Apple Blossom Twigs low ruffled bowl - purple
- ___ 251. Wishbone epergne - white - frosty & pretty, rare & desirable
- ___ 252. Pulled Loop 12" vase - purple
- ___ 253. Enameled Iris tankard water pitcher w/diagonal band & one tumbler - blue - very scarce, nice
- ___ 254. Windmill ruffled bowl - lime green - scarce color, lacks irid.
- ___ 255. Shell & Sand 9" plate - marigold - rare plate, super pretty!
- ___ 256. Wide Panel 12" deep round bowl - red - stretchy
- ___ 257. M'burg Hobnail spittoon - amethyst - scarce & desirable
- ___ 258. Horlacher Adv. Thistle ruffled bowl - green
- ___ 259. Vintage round sauce - celeste blue - fantastic stretchy irid., a rare beauty
- ___ 260. Little Flowers chop plate - marigold - rare plate, silvery
- ___ 261. Little Flowers 6" plate - marigold - has stretchy irid.
- ___ 262. Fishnet Primrose 6" vase - red - very scarce, highly desired
- ___ 263. Blackberry Block tankard water pitcher - marigold - scarce
- ___ 264. Fisherman's mug - purple
- ___ 265. Holly ruffled bowl - red - scarce & desirable
- ___ 266. M'burg Courthouse IC shaped bowl - amethyst - radium, good mold work
- ___ 267. Wishbone ftd ruffled bowl - ice green - rare color, nice
- ___ 268. Good Luck PCE bowl w/ribbed back - blue
- ___ 269. Diamond Points 11" vase - aqua opal - scarce, very nice
- ___ 270. Diamond Points 9 1/2" vase - ice green - scarce color
- ___ 271. Inverted Thistle water pitcher & one tumbler - purple - very rare pitcher, nice
- ___ 272. Fanciful 3 in 1 edge bowl - peach opal
- ___ 273. Rose Show ruffled bowl - aqua opal - pastel & nice
- ___ 274. Rose Show ruffled bowl - white - pretty
- ___ 275. Rose Show ruffled bowl - horehound - super pretty bowl, has polished spot on edge
- ___ 276. Rose Show ruffled bowl - aqua - minor pinpoint on edge, slight rub on rose, tough color
- ___ 277. Rose Show ruffled bowl - blue - super pretty, nick on rose
- ___ 278. Rose Show ruffled bowl - purple - repair on collar base
- ___ 279. Rose Show ruffled bowl - marigold - pretty, nick on collar base
- ___ 280. Imperial Grape 8 pc. punch set - purple - very pretty, minor nick on outside edge of one point, hard set to find
- ___ 281. Stippled Three Fruits ruffled bowl w/ribbed back - ice blue - super rare color w/couple of chips on base
- ___ 282. Stippled Three Fruits ruffled bowl w/ribbed back - white - nick on point
- ___ 283. Orange Tree ruffled bowl - red - very nice bowl, has nick on back of one point
- ___ 284. Rustic 19" funeral vase - marigold - burst on base
- ___ 285. M'burg Hobstar & Feather giant rose bowl - purple - super pretty & very rare, bottom of one tooth on base has been polished
- ___ 286. Captive Rose 9" plate - blue - fantastic! maybe as pretty as I've seen in blue, chip on back edge
- ___ 287. Oriental Poppy tankard water pitcher - ice blue - very rare pitcher, nick on side of lip
- ___ 288. Memphis 8 pc. fruit bowl set - purple - scarce, nice, chip on back edge of bowl
- ___ 289. Aurora Pearls enameled ruffled brides bowl with 3 in 1 edge - amberina - very slight sliver off top edge of 3 in 1 edge, no harm, super pretty
- ___ 290. Creole giant rose bowl - marigold - chip on outside edge of point
- ___ 291. Ripple 18 1/2" funeral vase - purple - bottom ripple has chip
- ___ 292. M'burg Hanging Cherries 10" ruffled bowl w/Hobnail back - marigold - satin & rare, two 1" heat checks in base
- ___ 293. Field Flower water pitcher & 1 tumbler - purple - both fantastic, chip on base of pitcher
- ___ 294. Coin Dot deep round bowl - red - chip on base
- ___ 295. Stippled Three Fruits 9" plate w/ribbed back - lavender - chip on point
- ___ 296. Tree Trunk mid-size 13 1/2" vase - purple - pretty, chip on top edge
- ___ 297. Orange Tree Orchard water pitcher - blue - crack where handle applies
- ___ 298. Fluffy Peacock water pitcher - green - 1" crack where handle applies
- ___ 299. Orange Tree 9" plate - blue - pretty, chip on back of point
- ___ 300. Stippled Grape & Cable Variant ruffled bowl w/ribbed back - green - electric & fantastic!
- ___ 301. Octagon water goblets (2) - marigold - one 6", one 6 1/2"
- ___ 302. Lotus & Grape hdd bonbon - red - rare bonbon & nice
- ___ 303. Scroll Embossed goblet - green - unusual shape
- ___ 304. M'burg Strawberry ruffled compote - amethyst - radium, super

205



211



215



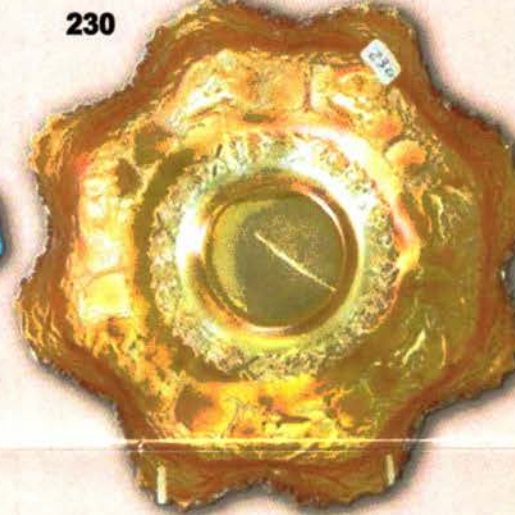
222



217



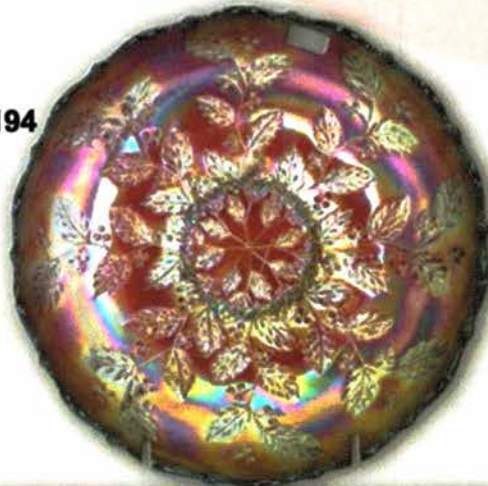
230



328



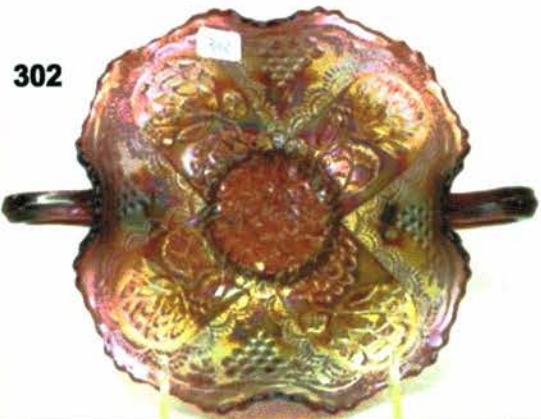
194



306



302



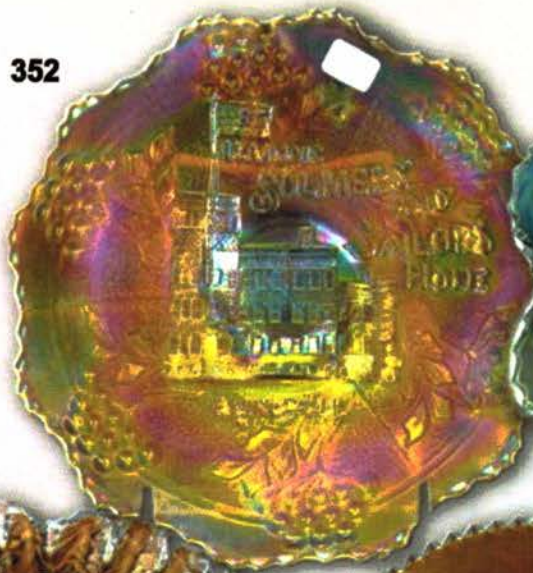
98



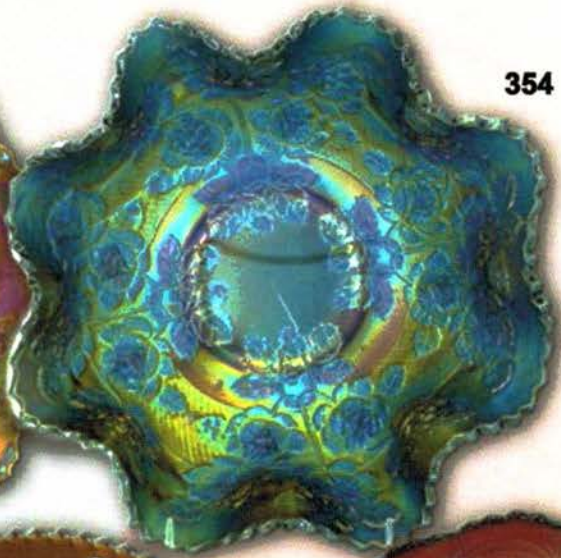
150



352



354



232



246



337



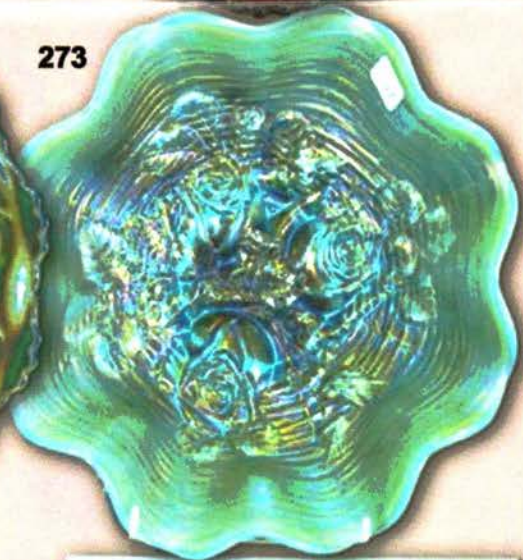
259



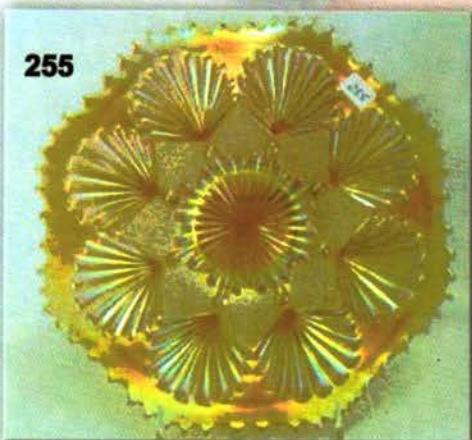
311



273



255



249



319



- ___ 305. Brocaded Acorn hdd sandwich tray - ice blue
- ___ 306. **Lattice & Grape tankard water pitcher & 1 tumbler - blue - very scarce, nice**
- ___ 307. **Acorn 7" ruffled bowl - red - scarce color**
- ___ 308. Fine Cut & Roses rose bowl - amethyst
- ___ 309. **M'burg Sunflower pin tray - green - scarce, very nice**
- ___ 310. **Ten Mums 10" ruffled bowl - amethyst - pretty**
- ___ 311. **1911 Atlantic City Elks 7" plate - blue - scarce, highly desirable, nice**
- ___ 312. Fenton's Peacock at Urn 9" plate - marigold - nice
- ___ 313. The Great House of Isaac Benesch & Sons advertising ruffled bowl - amethyst - nice
- ___ 314. **Stippled Rays sugar bowl - red - nice**
- ___ 315. Brocaded Acorn 8" water goblet - ice blue
- ___ 316. **WATERLILY & CATTAIL GIANT SPITTOON - MARIGOLD - PROBABLY MADE FROM A 10" BOWL, NEVER SEEN THIS BEFORE, PRETTY COOL!**
- ___ 317. Singing Birds mug - lavender
- ___ 318. Singing Birds mug - blue
- ___ 319. **Shell 9" plate - smoke - scarce, nice**
- ___ 320. N's Smooth Rays spt ftd ruffled bowl - amethyst - not sure if I seen this before? very unusual
- ___ 321. **Loganberry vase - amber - super pretty**
- ___ 322. **Beaded Cable rose bowl - ice blue - scarce color**
- ___ 323. Beaded Cable rose bowl - white - nice
- ___ 324. Beaded Cable rose bowl - aqua opal - butterscotch, nice
- ___ 325. Beaded Cable rose bowl - green - very pretty
- ___ 326. Beaded Cable rose bowl - blue
- ___ 327. **Stippled Peacocks PCE bowl w/ribbed back - marigold - super pretty**
- ___ 328. **Luster Rose water pitcher & 1 tumbler - purple - super pretty, quite scarce**
- ___ 329. Leaf & Beads nut bowl - marigold - flower interior
- ___ 330. **Concord 9" plate - amethyst - very pretty plate, two large spots of epoxy on collar base**
- ___ 331. Grape & Cable cup & saucer - purple
- ___ 332. **Starburst spittoon - marigold - has some chips along top edge, scarce**
- ___ 333. Holly 6 ruffled bowl - green - nice
- ___ 334. **Enameled Forget Me Not tankard water pitcher - marigold - pretty**
- ___ 335. Wild Rose open edge ftd bowl - blue - scarce color
- ___ 336. **M'burg Peacock 6" plate - amethyst - satin, rare**
- ___ 337. **Peacock Tail 7" IC shaped bowl - red - very rare bowl & desirable**
- ___ 338. **Heavy Grape 8 pc. punch set - marigold - scarce set, nice**
- ___ 339. **Miniature Twigs 4" JIP CRE vase - purple - these are neat**
- ___ 340. **Peacock & Grape 3 in 1 edge bowl - peach opal - pretty, scarce color**
- ___ 341. Persian Medallion 6" plate - blue
- ___ 342. **Horse Medallion ftd nut bowl - red - scarce bowl & highly desirable**
- ___ 343. Greek Key PCE bowl w/ribbed back - blue - silvery
- ___ 344. Persian Medallion chop plate - blue - very nice example for these, scarce
- ___ 345. Orange Tree w/trunk 9" plate - white - nice
- ___ 346. **Poinsettia & Lattice ftd ruffled bowl - marigold - dark, pretty**
- ___ 347. Honeycomb & Beads crimped edge ruffled 7" bowl - purple - minor nick on edge, super pretty
- ___ 348. **Central Shoe Store advertising ruffled bowl - purple - very rare adv. bowl, nice**
- ___ 349. **Rustic 21" funeral vase w/plunger base - blue - tall, pretty & very desirable**
- ___ 350. Orange Tree loving cup - amethyst - pretty, 1" crack by handle
- ___ 351. **Plaid IC shaped bowl - red - minor pinpoint on backside of point, very rare bowl**
- ___ 352. **Illinois Soldiers and Sailors Home 7" plate - marigold - a beautiful one!**
- ___ 353. Imperial Grape water pitcher & 1 tumbler - purple - super nice
- ___ 354. **ROSE TREE RUFFLED BOWL - BLUE - VERY RARE BOWL & FABULOUS, YOU COULD CALL THIS ELECTRIC!**
- ___ 355. Victorian lg ruffled bowl - purple - very pretty example, large chip on base
- ___ 356. Vintage 9" ruffled bowl - red - chip with epoxy on base
- ___ 357. M'burg Nesting Swan ruffled bowl - amethyst - chip on edge, radium
- ___ 358. Waterlily ftd ruffled saucer - red - pretty, one foot filled w/epoxy
- ___ 359. Fenton's Flute 9" vase - red - super pretty, minor heat check in base
- ___ 360. Peacock at the Fountain ruffled compote - purple - chip on base
- ___ 361. Morning Glory 17 1/2" funeral vase - purple - crack in base
- ___ 362. Pony 10 ruffled bowl - ice green - couple of nicks on edge
- ___ 363. Sunflower spt ftd deep ruffled bowl - blue - couple of nicks on feet
- ___ 364. Vintage dome ftd deep ruffled bowl - celeste blue - minor nick on edge, rare
- ___ 365. Fenton's Fine Rib 10 1/2" vase - red - chip on top edge
- ___ 366. Ski Star dome ftd 3 in 1 edge bowl - purple - nick on base
- ___ 367. Persian Garden ruffled fruit bowl - white - chip on edge of bowl
- ___ 368. M'burg Many Stars w/6 point star IC shaped bowl - green - radium, pretty, minor nick on point
- ___ 369. Double Dutch ftd round bowl - purple - super pretty, very minor pinpoints on feet
- ___ 370. Orange Tree Loving cup - green - fantastic, chip on bottom of handle
- ___ 371. Orange Tree Loving cup - white - nice, repaired chips on bottoms of handles
- ___ 372. M'burg Bullseye & Loop 12" vase - amethyst - 2 chips at top edge
- ___ 373. Star of David ruffled bowl - marigold - pretty, nick on edge
- ___ 374. Good Luck 9" plate w/BW back - marigold - chip on back of point
- ___ 375. Four Flowers 9" ruffled bowl - purple - large chip on back edge

Seeck Auctions
PO Box 377
Mason City, Iowa
50402

PRESORTED
FIRST CLASS MAIL
US POSTAGE
PAID
MAIL EXPEDITORS



251

Carnival Glass

2014 Auction

Sat. May 3, 9:30 a.m.
Embassy Suites
Airport Hotel
Kansas City, Missouri

T5 P1 79
LEE MARKLEY
BOX 306
MENTONE IN 46539-0306



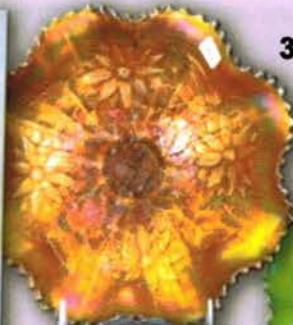
25



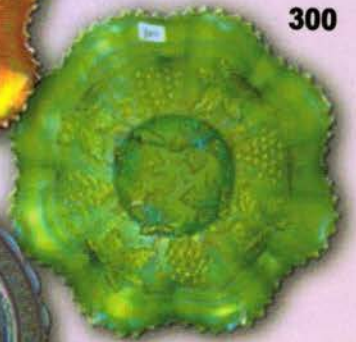
85



346



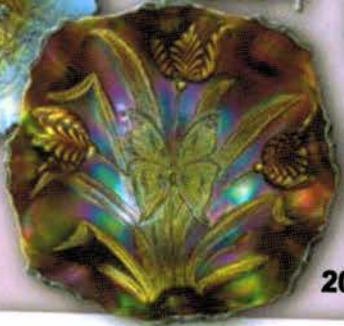
300



35



128



200



155



12



20



33



43

