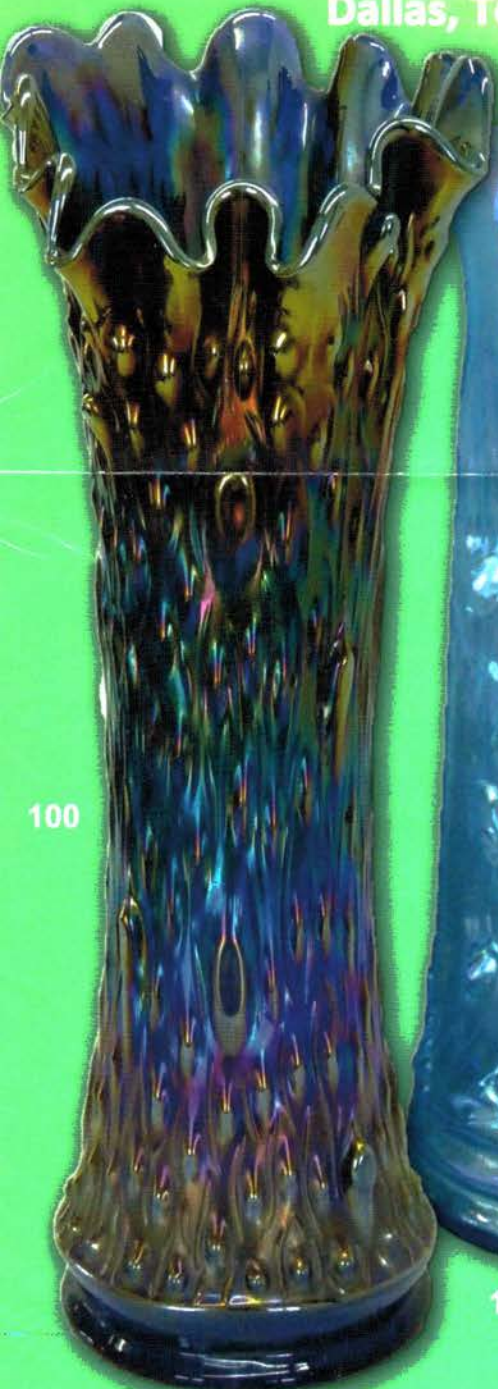


Texas Carnival Glass Club Convention

Carnival Glass 2014 AUCTION

Saturday,
March 22, 9:30 a.m.

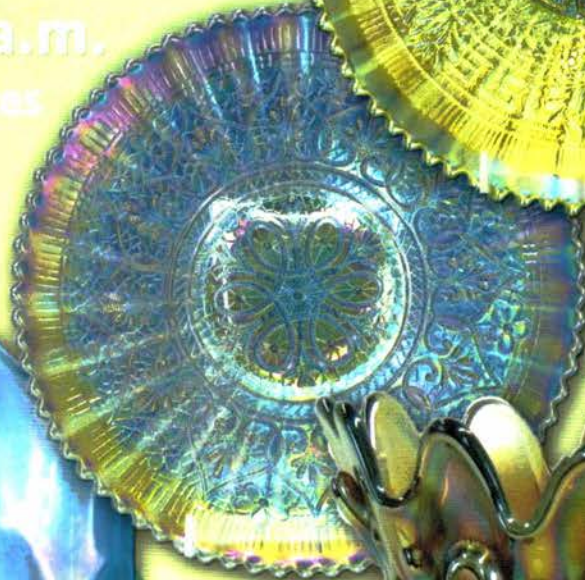
Wyndham Dallas Suites
Dallas, Texas



100



15

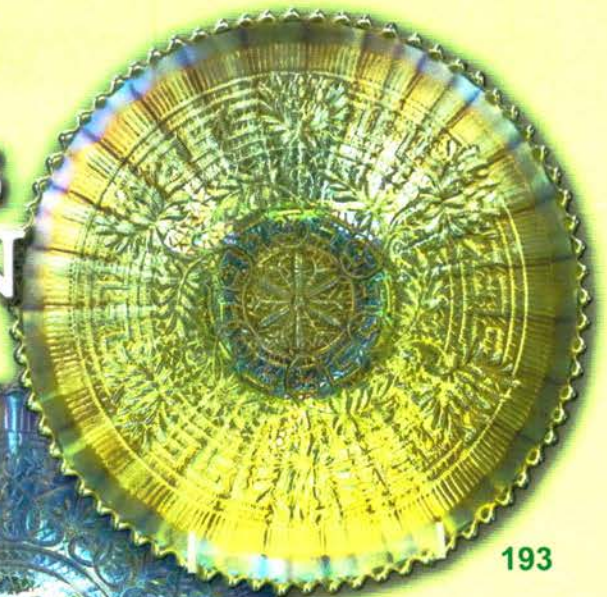


50

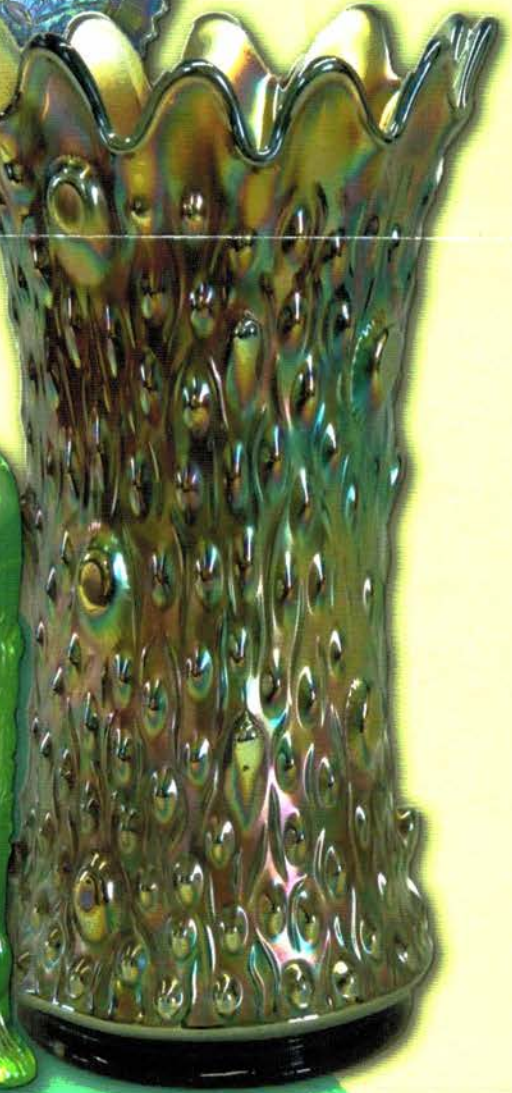


120

10



193



JIM & JAN SEECK

Seeck Auctions

641-424-1116

JIM & JAN SEECK

CARNIVAL GLASS AUCTION

641-424-1116

Saturday, March 22, 2014 — 9:30 AM

Texas Carnival Glass Club Convention

Wyndham Dallas Suites

7800 Alpha Road

Dallas, Texas

NO BUYER'S PREMIUM—OPEN TO THE PUBLIC

ABSENTEE BIDDING is available on-line through Auction Flex using our online catalog at www.seeckauction.com

★ *Absentee bidding closes Fri., March 21 at 6 p.m. CST*

Please email us and we will put you on our email mailing list for auction notices.

e-mail: jimjan@seeckauction.com

Seeck Auctions is pleased to be selling the **Hackett estate** from Tennessee. We have also included glass from the **Jane Dinkins estate** that has been donated to the Texas Carnival Glass Club. Lot #205 to the end of the auction is the Dinkins glass. There are some very nice pieces including rare miniatures.

Lodging

If staying at the hotel, call direct for room reservations: Call 972-233-7600, option 2 and tell them you are with the Texas Carnival Glass Club, or use the **group booking code 03186822TE**.

TCGC Convention Information

Visit the *exciting new* Texas Carnival Glass Club Website for more information on the convention: www.texas carnivalglass.org

Terms: Cash or Check, VISA, MasterCard & Discover accepted w/proper ID. 4% Clerking Fee on all purchases made using credit cards. Announcements made day of sale take precedence over any printed information.

We have 3 options for absentee bidding for our *live* auctions:

- 1) If you DO NOT have internet access, you can:** Call us by phone to enter your bids at (641)424-1116 **OR** by sending the numbers of the item(s) desired and the amount bid on each to: Seeck Auctions, PO Box 377, Mason City, Iowa 50402. We would prefer you call us with your bids rather than send them in a letter.) We will enter your bids into our online bidding system.
★ Have all written bids in by **Wed., March. 19**
- 2) Enter your bids from our website into our online catalog through the Auction Flex system.**
 - ◆ **First-time bidders: Set up your account** by creating a user name and password and filling out basic information. You will also need to **register for the auction** which will ask you to enter a valid credit card number. This card will be validated by a one time only charge of \$1 charge to your card. **You will use this user name and password for all our auctions.**
 - ◆ You are not required to pay by credit card if you are successful with your online bid. We will let you know what you owe us through an email and you can decide how you would like to pay us.
 - ◆ An exciting advantage to online bidding is that you can be notified by email if you are outbid on an item, which lets you increase your bid in time, or bid on something else. **There is a cutoff date and time, for each auction, for entering your bids online.** ★ **Online absentee bidding for this auction closes Friday, March 21 at 6 p.m. CST.**
 - ◆ Remember that just because you are the high bidder in the online catalog, this does not mean you have won the item. Your bid still needs to **beat** the floor bidders and live phone bidders. If your high bid lands with a floor bidder during the live auction, the floor bidder takes precedence. You might want to bid higher on a highly desired item for a better chance at winning its absentee bid.
 - ◆ If you do not receive an item that sold for less than your bid, assume we canceled your bid because the item had a severe manufacture problem, damage, or was not listed correctly.
- 3) Live phone bidding is available on pieces with an estimated sale price of \$500 or more.** ★ Contact us by the **Thursday before the auction, which is March 20** We will need to know the lot# and the phone number that you can be reached at on the day of the auction. We also need your home phone number if different than the above number.

Please call with questions: 641-424-1116.

If you win an online bid you will be notified by phone or e-mail between one to three days after the auction.

There is a **\$7 handling charge for each successful bid, with shipping and insurance charges additional.**

ONLINE BID INCREMENTS: \$1 - \$100/\$5 \$100 - \$200/\$10 \$200 - \$700/\$25 \$700 - \$1,500/\$50
\$1,500 - \$3,000/\$100 \$3,000 - \$5,000/\$250 \$5,000+ Auctioneer's Discretion

- ___ 1. Poppy Variant w/Stippled Ray interiors ruffled 7" bowls (2) - purple
- ___ 2. Leaf & Beads flared nut bowl w/Sunflower interior - marigold
- ___ 3. Holly & Berry hdd nappy - peach opal
- ___ 4. Beaded Shell mug - purple
- ___ 5. Enameled Cherry & Little Flowers 7 pc. water set - blue - one tumbler has pinpoint on base
- ___ 6. Dugan Cherries crimped edge tri-cornered bowl - peach opal - minor nick on rib of foot
- ___ 7. Beaded Cable 7" ftd ruffled bowl - green - made from rose bowl
- ___ 8. Lot of 3 misc. pieces of Carnival Glass
- ___ 9. Wishbone ftd 9" plate - purple - silvery, irid. spot in center
- ___ **10. Grape & Cable hatpin holder - ice green - extremely rare color & seldom sold, a great piece!**
- ___ 11. Grape & Cable hatpin holder - ice green - another one? this one is cracked badly
- ___ 12. Grape & Cable hatpin holder - purple
- ___ 13. Grape & Cable hatpin holder - marigold - nice, epoxy on foot
- ___ 14. Fenton Grape & Cable ftd ruffled fruit bowl - ice green - very rare, damaged
- ___ **15. Oriental Poppy tankard water pitcher - ice blue - super pretty pitcher, very rare**
- ___ **16. Oriental Poppy tankard water pitcher - white - pretty irid. hard to find**
- ___ 16a. Oriental Poppy tumbler - white
- ___ **17. Oriental Poppy tankard water pitcher - green - very pretty for these**
- ___ **18. Oriental Poppy 7 pc. water set - purple - nice set**
- ___ **19. Oriental Poppy 7 pc. water set - marigold - small spot of peeling on top rim**
- ___ 20. Orange Tree powder jar - marigold - minor nick on lid, minor nick on base
- ___ **21. Hearts & Flowers ruffled compote - renninger blue - rare color, nice**
- ___ 22. Hearts & Flowers ruffled compote - aqua opal - minor burst on edge of base
- ___ **23. Hearts & Flowers ruffled compote - purple - scarce**
- ___ 24. Blackberry Spray Variant square shaped hat - lime green - marigold overlay, two sets of berries
- ___ **25. Fashion water pitcher - purple - rare color**
- ___ **26. Fashion 7 pc. water set - smoke - very rare color, hard to find in a set**
- ___ 27. M'burg Hobstar & Feather punch bowl base marigold - if you need it, here is your chance
- ___ **28. Drapery rose bowl - white - scarce color, nice**
- ___ 29. Drapery rose bowl - blue - has electric highlights
- ___ 30. Drapery rose bowl - marigold - scarce color, pretty
- ___ **31. Floral & Grape 7 pc. water set - white - scarce color, 2 tumblers w/chips**
- ___ 32. Floral & Grape 3 pc. water set - amethyst - handle cracked on pitcher
- ___ 33. Floral & Grape 6 pc. water set - blue - pitcher has manufacture bubble inside, only one perfect tumbler
- ___ **34. Hearts & Flowers PCE bowl w/ribbed back - marigold - pretty, hard to find in PCE**
- ___ 35. Orange Tree ftd ruffled fruit bowl - blue - pretty, pinpoint on edge
- ___ 36. Orange Tree ftd ruffled fruit bowl - marigold
- ___ 37. Nippon PCE bowl w/ribbed back - white - nice
- ___ 38. Leaf Columns 6 1/2" squatty vase - marigold - super pretty
- ___ **39. Many Fruits punch bowl, base & 1 cup - purple - scarce set, nice**
- ___ 40. Acorn Burrs creamer & spooner - marigold
- ___ 41. N's Eight Sided bushel basket - purple - scarce color
- ___ 42. N's Eight Sided bushel basket - marigold
- ___ **43. Greek Key tankard water pitcher & 1 tumbler - purple - rare & highly desirable, tumbler has mold roughness on base**
- ___ **44. Beaded Cable rose bowl - ice blue - scarce color, nice**
- ___ 45. Beaded Cable rose bowl - white - nice
- ___ 46. Two Flowers ftd ruffled sauce - pink - has marigold overlay, rare color
- ___ 47. Acorn Burrs 5 pc. water set - green - very pretty pitcher, pitcher has large chip on base
- ___ 48. Lot of 3 Acorn Burrs tumblers - purple

- ___ 49. Holly IC shaped bowl - marigold
- ___ **50. Hearts & Flowers 9" plate w/ribbed back - white - super pretty irid. on this rare plate!**
- ___ 51. Lot of 2 Milady tumblers - amethyst - nice
- ___ 52. Caroline hdd basket - peach opal - scarce
- ___ 53. Chrysanthemum ftd deep ruffled bowl - blue - has some scratches
- ___ 54. M'burg Hobstar & Feather giant rose bowl- purple - rare piece, crack in base
- ___ 55. Imperial Grape punch bowl top - green
- ___ **56. Sailboats 6" plate - marigold - a nice one**
- ___ 57. M'burg Little Stars 7" ruffled bowl - green- satin
- ___ **58. Springtime 4 pc. table set - purple - scarce set, no lid for sugar**
- ___ 59. Orange Tree 8 pc. ruffled punch set - marigold - large chip on underside of base at bottom
- ___ **60. M'burg Rosalind small size ruffled compote - green - satin, very rare, nice piece**
- ___ 61. Petal & Fan crimped edge banana boat shaped sauce - peach opal
- ___ **62. Peacock at the Fountain 7 pc. water set - purple - nice set, one tumbler has nick**
- ___ **63. Grape & Cable powder jar - horehound - rare color, very nice**
- ___ 64. Grape & Cable ruffled bowl w/BW back - green
- ___ 65. Stag & Holly lg size ftd ruffled bowl - blue - silvery
- ___ 66. M'burg Rosalind 10" ruffled bowl - marigold - satin, pretty, chip on back edge
- ___ **67. Blackberry Spray Variant ruffled hat - red - cherry red color, 2 sets of berries**
- ___ **68. Orange Tree Scroll tankard water pitcher - marigold - very rare pitcher, pretty**
- ___ 69. Orange Tree Scroll tumbler - marigold
- ___ 70. M'burg Trout & Fly ruffled bowl - green - satin, has lime deposits inside bowl
- ___ **71. Stork & Rushes 5 pc. water set-blue- nice**
- ___ 72. Fenton's Fine Rib 9 1/2" vase - aqua - scarce color
- ___ 73. Fenton's Fine Rib 10" vase - lime green - has marigold overlay
- ___ 74. Basketweave Open Edge ruffled basket - ice green - scarce color
- ___ **75. Heavy Webb large size 8 ruffled bowl - peach opal - rare pattern, hard to find piece & nice**
- ___ 76. Lot of 3 decorated lampshades - marigold
- ___ 77. Apple Tree water pitcher - white - crack around handle
- ___ 78. Apple Tree 7 pc. water set - marigold
- ___ 79. Holly 9" plate - marigold
- ___ **80. Grape & Cable candle lamp - marigold - rare & desirable**
- ___ 81. Blackberry Open Edge ruffled basket- aqua
- ___ 82. Blackberry Open Edge ruffled basket - powder blue
- ___ **83. Peacocks PCE bowl w/plain back - white rare bowl, nice**
- ___ 84. Grape & Cable bonbon - blue
- ___ 85. M'burg Hanging Cherries butter dish - green - chip on bottom edge of base
- ___ 86. Heavy Iris 7 pc. tankard water set - marigold
- ___ **87. Stippled Strawberry ruffled bowl w/ ribbed back - blue - scarce color, nice**
- ___ 88. 1986 ACGA Miniature Morning Glory tankard - marigold
- ___ 89. 1988 ACGA Miniature Morning Glory tankard - purple
- ___ **90. Grape & Cable straight up centerpiece bowl - ice green - rare color, nice**
- ___ 91. Australian Butterfly Bower 6 1/2" ruffled bowl - marigold - hard to see chip in pattern
- ___ **92. M'burg Hobnail spittoon - amethyst - scarce, nice**
- ___ 93. Holly JIP CRE hatshape - lime green - marigold overlay
- ___ **94. Singing Birds 7 pc. water set - green - scarce, nice**
- ___ 95. Orange Tree 6 pc. berry set - white - rare color, one sauce perfect, otherwise feet are chipped
- ___ 96. Grape & Cable humidior - purple - very pretty for these, has nicks on rim of lid, chips on base rim
- ___ 97. Golden Harvest 6 pc. wine set - marigold
- ___ **98. Peacock & Dahlia 7" plate - marigold - pretty, very scarce**
- ___ 99. Little Flowers tri-cornered sauce - marigold
- ___ **100. Tree Trunk 17 1/2" funeral vase- blue - super pretty example, very rare**

- ___ 101. Octagon large size 7 pc. water set - marigold - heat check in base of pitcher, one tumbler w/nick
- ___ 102. Little Fishes lg IC shaped ftd bowl - marigold - scarce
- ___ 103. Open Rose 9" plate - marigold
- ___ **104. Fenton's Peacock at Urn 9" plate - blue - super pretty, scarce**
- ___ 105. Butterfly & Berry spooner - amethyst - super pretty, scarce color
- ___ 106. Orange Tree loving cup - marigold - dark, nice
- ___ 107. Dandelion tankard water pitcher & 1 tumbler - green - pitcher has crack in handle
- ___ 108. Dandelion tankard 6 pc. water set - marigold - chip off handle where applied to pitcher
- ___ 109. M'burg Ohio Star tankard pitcher - crystal not Carnival
- ___ **110. Grape & Cable 14 pc. master punch set - purple - very rare & highly desirable, nice**
- ___ 111. N's Town Pump - purple - one point made of epoxy
- ___ 112. Fenton's Three Fruits 9" plate - amethyst - very minor scratches on fruit
- ___ 113. Rose Show ruffled bowl - ice blue - scarce, pretty, chip on edge
- ___ 114. Peacocks 9" plate w/ribbed back - white - nice
- ___ 115. Diamond Lace water pitcher & 1 tumbler - purple - pretty
- ___ 116. Stag & Holly lg size IC shaped bowl - marigold
- ___ 117. Thistle banana boat - blue - chip on outside edge
- ___ **118. Morning Glory 16" funeral vase - marigold - nice**
- ___ 119. Farmyard crimped edge plate - lavender opal - signed DBS, contemporary
- ___ **120. Tree Trunk elephant foot 13" vase amethyst - super scarce & pretty, always in demand**
- ___ 121. Fruits & Flowers bonbon - aqua opal - pastel, epoxy on entire base
- ___ 122. Field Flower 7 pc. water set - marigold - one tumbler has chip
- ___ 123. Butterfly & Tulip ftd square shaped bowl - marigold - nice
- ___ 124. Mikado ruffled giant compote - marigold
- ___ **125. Fenton Peacock at Urn 6 ruffled bowl - blue - super, super**
- ___ 126. Imperial Grape goblets - purple & marigold
- ___ **127. Dahlia water pitcher - white - very scarce, nice**
- ___ 128. N's Bushel Basket - blue - chip inside top edge
- ___ 129. N's Bushel Basket - marigold - super
- ___ **130. Wreath of Roses round shaped 5 pc. punch set - blue - has amethyst base, nice**
- ___ 131. Floral & Optic ftd cake plate - white
- ___ 132. Beaded Shell water pitcher - marigold - scarce, nice
- ___ 133. Persian Garden fruit bowl top - purple - silvery
- ___ 134. Grape & Cable 7 pc. water set - purple
- ___ 135. Good Luck ruffled bowl w/ribbed back - marigold - pretty
- ___ 136. Luster Rose round fruit bowl - smoke
- ___ **137. Round Up 9" plate - peach opal**
- ___ **138. Orange Tree mug - red - cherry red color**
- ___ 139. Orange Tree 10 pc. round punch set - marigold
- ___ **140. Springtime 7 pc. water set - purple - rare set, one tumbler has chip, lime inside pitcher, chip by handle**
- ___ 141. Lot of 5 Primrose lamp shades - marigold - 2 have nicks on top rim
- ___ 142. Lot of 12 Acorn Burrs punch cups - purple
- ___ **143. Drapery Variant 8" vase - green - very rare color, haven't sold many of these, nice**
- ___ 144. Grape & Cable ruffled sauce - blue - irid. spot in center, rare color
- ___ 145. Fashion 6 pc. punch set - marigold
- ___ 146. Grape & Cable banana boat - purple
- ___ 147. Lattice & Grape 7 pc. tankard water set - marigold - handle cracked in pitcher
- ___ 148. Springtime 6 pc. berry set - purple - scarce set
- ___ 149. Good Luck 9" plate w/BW back - marigold - nice
- ___ 150. Four Seventy Four milk pitcher - green
- ___ 151. Many Fruits ruffled punch bowl & base - purple - minor nicks on bottom of base, minor nick between ruffle on bowl

- ___ 152. **Australian Emu round 10" compote - marigold - rare item, slightly lopsided**
 - ___ 153. Banded Grape & Cable cologne bottles (2)- purple - one stopper not banded, banded stopper damaged
 - ___ 154. Vineyard 7 pc. water set - marigold - one tumbler w/nick
 - ___ 155. **Acorn 7" ruffled bowl - red - nice**
 - ___ 156. Diamond Block compote - clambroth
 - ___ 157. Grape & Cable cracker jar - purple - chip on top edge & on handle
 - ___ 158. **Wreathed Cherry water pitcher - marigold - nice**
 - ___ 159. Holly 9" plate - blue
 - ___ 160. Fenton Peacock at Urn ruffled compote - marigold
 - ___ 161. Drapery candy dish - blue - scarce color
 - ___ 162. Grape & Cable candlestick - marigold - light color
 - ___ 163. **Peacock lamp - red - very scarce, highly desirable, decoration in inside starting to wear**
 - ___ 164. **Peacock lamp - purple - nice match, scarce**
 - ___ 165. Springtime butter dish - marigold - chip on rim of butter dish top
 - ___ 166. Wishbone 10" ruffled bowl - green
 - ___ 167. M'burg Blackberry Wreath crimped edge 7" round bowl - marigold - radium, neat shape
 - ___ 168. Horse Medallion rose bowl - blue
 - ___ 169. Grape & Cable 4 pc. table set - marigold - nick on base of spooner, no butter bottom
 - ___ 170. Lot of 2 Beaded Shell tumblers - purple
 - ___ 171. Grape Arbor ftd fruit bowl - marigold
 - ___ 172. Leaf & Beads rose bowl - aqua opal - lots of bubbles in glass
 - ___ 173. Lot of 2 Peacock at the Fountain tumblers- marigold - both super
 - ___ 174. **Sailboat deep round sauce - red - pretty**
 - ___ 175. Fenton's Grape & Cable ruffled fruit bowl- marigold - has Persian Medallion interior
 - ___ 176. Lot of 5 Grape & Cable tumblers - purple- one tumbler with repair on bottom
 - ___ 177. **Peach 7 pc. water set - white - very scarce set, one tumbler has burnt irid.**
 - ___ 178. Wishbone ftd ruffled bowl - purple
 - ___ 179. Harvest Poppy ruffled compote- marigold- nice
 - ___ 180. **Grape & Cable 8 pc. punch set - purple - nice**
 - ___ 181. Vintage powder jar - marigold
 - ___ 182. Peacocks 9" plate w/ribbed back - purple- large chip on edge
 - ___ 183. Grape & Cable Variant 9" plate w/plain back - marigold
 - ___ 184. Heisey ftd salt - marigold
 - ___ 185. Fenton's Three Fruits 9" plate - amethyst
 - ___ 186. Dugan's Cherries ftd ruffled bowl - peach opal
 - ___ 187. Grape Delight nut bowl - purple
 - ___ 188. **Zippered Loop 7" lamp - marigold - 3 7/8" base, this is the smallest size, hard to find, nice**
 - ___ 189. Rustic 22" funeral vase - blue - this is a shelf piece, large chunk off top
 - ___ 190. Stippled Grape & Cable PCE bowl w/ ribbed back - marigold - pretty
 - ___ 191. Peacock & Grape spt ftd 9" plate - marigold
 - ___ 192. Loganberry vase - green - nice
 - ___ 193. **Embroidered Mums 9" plate w/ribbed back - ice green - super nice example of this rare plate**
 - ___ 194. Lot of 6 misc. pieces - all damaged
 - ___ 195. Eyewinker tumbler - red - signed Robert Hansen
 - ___ 196. Blinko 3 1/4" vase - blue - signed Robert Hansen
 - ___ 197. Mary Gregory bell - blue - signed Robert Hansen, minor nick on top of bell
 - ___ 198. Frog - amethyst - signed Robert Hansen
 - ___ 199. Texas miniature creamer & sugar - blue - unsigned Hansen
 - ___ 200. Daisy & Button 1 3/4" miniature spittoon- red - unsigned Hansen
 - ___ 201. Vermont toothpick - red - unsigned Hansen
 - ___ 202. Frog - blue - signed Robert Hansen
 - ___ 203. Daisy & Button cruet - ice blue - signed Robert Hansen
 - ___ 204. Honeycomb juice tumbler - red - signed Ronald Hansen
- The rest of the auction consists of glass from the Jane Dinkins Estate donated to the Texas Carnival Glass Club***
- ___ 205. **Covered Grand Piano - marigold - very rare novelty**
 - ___ 206. **Peacocks PCE bowl w/ribbed back - green - scarce color, nice**
 - ___ 207. Hearts & Flowers ruffled compote - white- nice example

- ___ 208. Hearts & Flowers ruffled compote - marigold - nice
- ___ 209. N's Peacock at Urn master IC bowl - ice blue - very pretty example
- ___ 210. N's Peacock at Urn IC sauce - ice blue - nice
- ___ 211. N's Peacock at Urn master IC bowl - purple - scarce, nice
- ___ 212. N's Peacock at Urn master IC bowl - marigold - nice
- ___ 213. N's Peacock at Urn IC sauce- marigold- nice
- ___ 214. Oval Star child's miniature water set - marigold - rare miniature
- ___ 215. Good Luck PCE bowl w/ribbed back - green - nice
- ___ 216. Good Luck PCE bowl w/ribbed back - pastel marigold - super, a beauty!
- ___ 217. Good Luck PCE bowl w/BW back - marigold - dark, nice
- ___ 218. Fenton tumble up or guest set w/cobalt handle - marigold
- ___ 219. Dragon & Lotus ruffled bowl - peach opal - very pretty, rare
- ___ 220. Horse Head bookends - marigold - rare set
- ___ 221. Poppy Show 9" plate - marigold - scarce
- ___ 222. Fine Rib 9" vase - red slag - scarce, nice
- ___ 223. Holly 9" plate - marigold - pretty
- ___ 224. Violin wall vase - marigold
- ___ 225. Carnival Hobstar 4 pc. table set-purple- super pretty set, hard to find
- ___ 226. Stretch Glass 13" centerpiece bowl w/gold decoration - red
- ___ 227. Peacocks ruffled bowl w/ribbed back - marigold
- ___ 228. Ripple 11" vase - aqua teal - 2 3/4" base
- ___ 229. Footed 7" vase - marigold - can't find pattern, unusual
- ___ 230. M'burg Fleur de Lis dome ftd IC shaped bowl - green - radium, nice
- ___ 231. Zippered Stitch? salt & pepper shakers - marigold - unusual set
- ___ 232. Drapery rose bowl - aqua opal
- ___ 233. Heavy Grape chop plate - marigold - nice
- ___ 234. Basketweave Open Edge IC shaped bowl - ice blue
- ___ 235. Grape & Gothic Arches pitcher & 1tumbler- marigold
- ___ 236. Four Flowers Variant 9" plate-olive green - scarce color
- ___ 237. Little Boot & Ladies Slipper - marigold
- ___ 238. Stippled Three Fruits 9" plate w/ ribbed back - lavender - scarce color
- ___ 239. Stippled Three Fruits 9" plate w/ribbed back - marigold
- ___ 240. Singing Birds 4 pc. table set - purple - scarce set
- ___ 241. Little Jessie & Big Jessie miniature cvd hens - marigold - the small one has mold roughness around the edges
- ___ 242. N's Town Pump - purple - scarce, nice
- ___ 243. Fisherman's mug - marigold - nice
- ___ 244. Basketweave Open Edge lg size ruffled basket - ice green - scarce
- ___ 245. Orange Tree 9" plate - marigold
- ___ 246. Pinecone 6" plate - green - nice
- ___ 247. Peacock & Grape ruffled bowl - marigold on moonstone - very pretty example, rare
- ___ 248. Basketweave Open Edge lg size square basket - white - scarce
- ___ 249. Basketweave Open Edge square shaped basket - red
- ___ 250. N's Eight Sided bushel basket - white
- ___ 251. Hearts & Flowers PCE bowl w/ribbed back - purple - scarce, nice
- ___ 252. Rooster 8" figurine - marigold - unusual piece, candy container?
- ___ 253. Round Up 9" plate - white - nice
- ___ 254. Skater's Shoe toothpick - marigold - neat piece
- ___ 255. Holly ruffled hatshape - aqua opal - rare piece
- ___ 256. Blackberry Open Edge 9" plate - marigold - has cracks in 4 spots in webbing
- ___ 257. Fenton #349 Florentine 10 1/2" candlesticks - red - very rare set, highly desirable

At end of auction, we will have several box lots of glass, some with damage.

Seeck Auctions
 PO Box 377
 Mason City, Iowa
 50402

PRESORTED
 FIRST CLASS MAIL
 US POSTAGE
 PAID
 MAIL EXPEDITORS



Carnival Glass
 2014 Auction

Sat. March 22, 9:30 a.m.
 Wyndham Dallas Suites
 7800 Alpha Road
 Dallas, Texas

T4 P1 256
 LEE MARKLEY
 BOX 306
 MENTONE IN 46539-0306

