



# **BURNS**

**AUCTION SERVICE**

**2014 TAMPA BAY  
CARNIVAL GLASS  
CONVENTION AUCTION  
SATURDAY, FEBRUARY 8th  
9:30 A.M.**

**Preview:**

**Friday, Feb. 7th after banquet  
Saturday, Feb. 8th at 8:00 a.m.**

***DOLPHIN BEACH RESORT***

***4900 Gulf Blvd, St. Pete Beach, FL***

***800-237-8916 or 727-360-7011***

***www.dolphinbeach.com***

***For more information, call Tom Burns at 407-592-6552***

***Florida License #AU3768***



Now...just take a good look at the front page photo! That was our host resort last year and if that doesn't convince you to show up... and with that, we hope you'll attend the 2014 Tampa Bay Carnival Glass Club Convention Auction here in St. Pete Beach.

This year we'll feature the glass of John and Judy Gosselin from Canada. They have acquired a diverse collection over the years and have decided to part with a number of absolutely wonderful items. We sure hope you'll be able to attend.....

The Dolphin Beach Resort of St. Pete Beach will host the event once again. Stay on I-275 through St. Petersburg to Exit 17 / The Bayway; continue West thru the Toll Booth and at the end; turn right (North) on Gulf Blvd. For motel information call them directly at 1-(800) 237-8916 or 1-(727) 360-7011.

The Convention will run from Wednesday, February 5th thru Saturday, February 8th. For further Convention information call Carl Chapman at 1-(813) 899-1993 or cell: 1-(813) 625-0927 or you may contact Janet Knechtel at 1-(863) 993-2387.

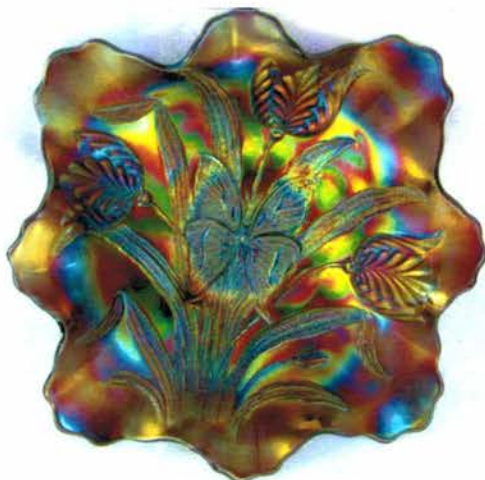
This auction will also be on the **Auction Flex Absentee Bidding System** as well as **Auction Zip ID#29661**.

Special note to all dealers... All Florida Dealers must have a copy of their Florida Tax Certificate – and all other dealers must have a VALID Tax License from their respective State. Thanks!!!

For any other information, or if I can be of any assistance, contact: Burns Auction Service Thomas Burns 183 Sunnyside Drive, Clermont, FL 34711



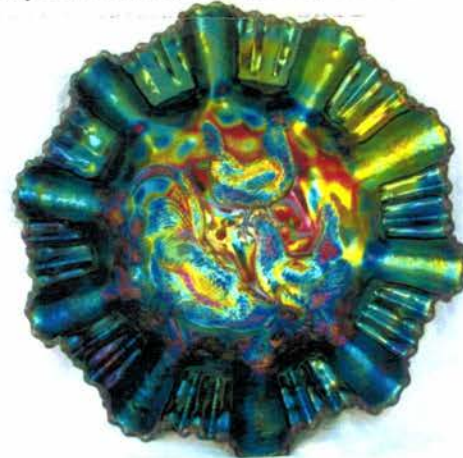
Lot 155



Lot 210



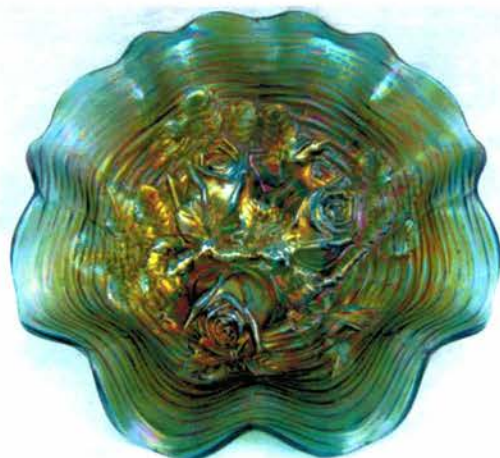
Lot 275



Lot 200



Lot 75



Lot 335



1. Contemporary Fenton Peacock and Dahlia Tri-Cornered Enameled Dec. Bowl – Red (unusual; decorated on outside)
2. Contemporary Fenton (95) Stripe Optic Vase with Tri-Cornered Top – Green Opaque (artist signed; nice and pastel)
3. Fenton Poppy Show J.I.P. Vase with Crimped Edge – Irid. Red (very scarce; great irid.; darker color)
4. Fenton Poppy Show J.I.P. Vase with Crimped Edge – Irid. Black (very scarce base color; great irid.)
5. **FENTON AP CHRISTMAS COMPOTE – IRID. TOPAZ OPAL. (VERY DESIRABLE COLOR – REALLY NICE)**
6. Fenton AP Christmas Compote – Irid. Green Opal. (odd color; very desirable; nice)
7. (2) Fenton HOACGA Candlesticks – (1) White; (1) Light Ice blue (selling x2)
8. European "Star and Fan" 7 pc. Cordial Set – Mari. (very scarce and desirable set; well matched)
9. Brockwitz "Super Star" Lg. Oval Banana Boat – Mari. (very unusual item; nice size and color)
10. **MAKER (?) "LUCILE" 7 PC. WATER SET - BLUE (RARE AND DESIRABLE SET; PERFECT WITH GREAT COLOR)**
11. Eda Floral Sunburst Vase – Blue (rare and desirable color; nice irid.)
12. Inwald (Czech) "Banded Diamond and Bars" Wine Decanter and Stopper – Dk. Mari. (very rare item in this pattern; great color and irid.)
13. (4) 3" Tall Inwald (Czech) "Banded Diamond and Bars" Juice Glasses – Dk. Mari. (scarce; great color' selling x4)
14. Inwald (Czech) "Banded Diamond and Bars" 5 pc. Cider Set – Dk. Mari. (great set with great irid.; really, really tough)
15. Eta Sunk Daisy ftd. Miniature Rose Bowl – Blue (some damage to feet)
16. **9 ½" AUSTRALIAN NESTING SWAN LG. 16 RUFFLED BOWL – MARI. (RARE AND DESIRABLE PATTERN; NOT OFTEN SOLD)**
17. **10" AUSTRALIAN MAGPIE LG. 8 RUFFLED BOWL – PURP. (GREAT COLOR AND IRID.)**
18. 9 5/8" Australian Kingfisher Lg. 12 Ruffled Bowl – Purp. (scarce with great color and irid.)
19. 6 ¾" Tall x 6 ¼" Wide Rindskopf Glass Co. Vining Leaf Vase – Dk. Mari. (very unusual; very desirable; great color)
20. **U.S. GLASS PEACOCK LAMP – MARI. (RARE; VERY DESIRABLE; GREAT IRID.)**
21. **WESTMORELAND CORINTH J.I.P. VASE – BLUE OPAL. (VERY SCARCE AND VERY DESIRABLE; NICE IRID.)**
22. 8 5/8" Westmoreland Daisy Wreath 6 Ruffled Bowl – Blue Opal. (neat; has an opaque base; nice irid.)
23. 5 ½" Westmoreland Hobstar and Fruit 6 Ruffled Sauce – Blue Opal. (scarce item in a scarce color)
24. Westmoreland Bo-Peep Handled Mug – Mari. (nice detail)
25. **WESTMORELAND WILD ROSE HANDLED SYRUP JUG – MARI. (RARE; DESIRABLE; AVERAGE COLOR AND IRID.)**
26. 8 ¾" Tall U.S. Glass "Tree Trunk" Vase – Lt. Mari. / Clear (tried to remember if I've seen this item before)
27. Ball Bottle with Enameled Floral Decor. – Mari. (an odd ball – get it!?!? Odd BALL)
28. **CZECH 2 PC. MOUNTAIN LAKE SCENE BOUDOIR LAMP – MARI. (REALLY NEAT AND VERY DIFFERENT; HAVEN'T SEEN ONE LIKE THIS)**
29. European Aurora Pearls Lg. Enam. 6 Ruffled Crimped Edge Brides Bowl – Opaque White (rare and desirable)
30. **FENTON MIKADO LG. 6 RUFFLED COMPOTE – GREEN (EXTREMELY RARE COLOR FOR THIS ITEM; HAS REALLY NICE, BRIGHT IRID.)**
31. **FENTON MIKADO LG. 8 RUFFLED COMPOTE – BLUE (VERY DESIRABLE ITEM WITH NICE IRID.; TOUGH!)**
32. 8 ¾" Fenton Ribbon Tie Bowl with 3 in 1 Edge – Blue (has odd stain finish)
33. 8 ½" Fenton Persian Medallion Bowl with 3 in 1 Edge – Amyth. (nice color and shape)
34. Fenton Stag and Holly Lg. ball ftd. Rose Bowl – Mari. (very desirable shape; nice color)
35. **8" FENTON STAG AND HOLLY SPATULA FTD. 8 RUFFLED BOWL – RED (RARE & DESIRABLE; SATINY FINISH WITH EXCELLENT COLOR)**
36. **6 ¾" FENTON HORSEHEAD MEDALLION FLARED BALL FTD. NUT BOWL – RED SLAG (ANOTHER RARE AND DESIRABLE ITEM WITH A SATINY FINISH)**
37. Fenton Horsehead Medallion ball ftd. J.I.P. Bowl – Mari. / Vase-line (a lighter Marigold overlay; nice base color)
38. 7 ¾" Fenton Horsehead Medallion Flat Plate – Mari. (nice dark and satiny example)
39. **6" FENTON LOTUS AND POINSETTIA BALL FTD. 6 RUFFLED SAUCE – RED / REV. AMBERINA (A BRIGHT AND DESIRABLE EXAMPLE; REALLY NICE)**
40. **9" FENTON PLAID 8 RUFFLED BOWL – RED (VERY RARE AND HAS GREAT RED COLOR; HAS A STAIN ON THE IRID.)**
41. 8 7/8" Fenton Plaid 8 Ruffled Bowl – Blue (very scarce with a nice satiny finish)
42. **8 5/8" FENTON PLAID ICE CREAM SHAPED BOWL – ODD GREEN (RARE AND DESIRABLE BOTH IN SHAPE AND COLOR)**
43. Fenton Thistle ftd. Oval Banana Boat Green (very scarce; nice color and irid.)
44. Fenton Thistle ftd. Oval Banana Boat – Blue (nice color and irid.; has a couple chips and an open bubble)
45. **FENTON FLUFFY PEACOCK HANDLED BULBOUS WATER PITCHER – BLUE (VERY SCARCE AND DESIRABLE ITEM; NICE FINISH)**
46. **FENTON FLUFFY PEACOCK HANDLED BULBOUS WATER PITCHER – AMYTH. (RARE AND VERY DESIRABLE; NICE IRID.)**
47. 15 3/8" Tall Fenton Rustic Mid size Swung vase with T.C.E. – Blue (nice size and satin finish)
48. 10 ½" Tall Fenton Plume Panels Swung Vase – Green (satiny finish)
49. 7" Tall Fenton 3 Diamond and Bows Swung Vase – Green (very scarce color for this pattern)
50. **8 ½" FENTON DRAGON AND LOTUS I.C. SHAPED BOWL – RED (NICE RED EXAMPLE; LOOKS RED WITH GREAT DETAIL)**
51. **9" FENTON DRAGON AND LOTUS 8 RUFFLED BOWL – RED (ANOTHER RED EXAMPLE WITH NICE DETAIL AND COLOR)**
52. **9" FENTON DRAGON AND LOTUS 8 RUFFLED BOWL – AQUA OPAL. (RARE AND VERY DESIRABLE; SOME SPOTTY IRID.; SATINY)**
53. **8 ¾" FENTON DRAGON AND LOTUS 8 RUFFLED BOWL – AMYTH. OPAL. (RARE AND VERY DESIRABLE COLOR; NICE SATINY FINISH)**
54. 8 7/8" Fenton Dragon and Lotus 8 Ruffled Bowl – Amyth. (nice example; attractive)
55. **9" FENTON DRAGON AND LOTUS BOWL WITH 3 IN 1 EDGE – P. OPAL. (VERY RARE AND DESIRABLE SHAPE; NICE OPAL. AND IRID.)**
56. **8 ½" FENTON DRAGON AND LOTUS 8 RUFFLED BOWL – P. OPAL. (RARE AND DESIRABLE; NICE OPAL. AND IRID.)**
57. **8" FENTON PEACOCK AND GRAPE SPATULA FTD. 8 RUFFLED BOWL – RED (EXCELLENT EXAMPLE WITH A NICE SATINY FINISH)**



58. **7 7/8" FENTON PEACOCK AND GRAPE SPATULA FTD. 8 RUFFLED BOWL – LIME GREEN OPAL. (ANOTHER VERY DESIRABLE ITEM WITH NICE PASTEL OPAL.)**
59. 7 7/8" Fenton Peacock and Grape spatula ftd. I.C. Shaped Bowl – Green (nice color and irid.)
60. **9" FENTON HOLLY 8 RUFFLED BOWL – RED (ATTRACTIVE SATINY EXAMPLE WITH A BRIGHTER FINISH)**
61. 9" Fenton Holly 8 Ruffled Bowl – Aqua / Mari. (very underappreciated color for this pattern)
62. **FENTON HOLLY 6 RUFFLED HAT – RED (REALLY NICE COLOR AND IRID.)**
63. Fenton Holly 6 Ruffled Hat – Reverse Amberina (nice color and irid.)
64. Fenton Holly J.I.P. Crimped Edge Hat – Red / Amberina (satiny; scarce)
65. Fenton Holly 4 sided Hat – Dark Amber (great color)
66. **9 5/8" FENTON HOLLY FLARED PLATE – BLUE (VERY SCARCE WITH A MULTI-COLORED FINISH)**
67. 9 1/2" Fenton Holly Flared Plate – Dk. Mari. (super color and irid.; really attractive)
68. Fenton Kittens Round Cereal Bowl – Mari. (scarce; nice)
69. Fenton Kittens 4 sided Bowl – Lt. Mari. (scarce; lighter finish)
70. **9" TALL FENTON WIDE PANEL SWUNG VASE – RED (ACTUALLY QUITE A RARE RED ITEM; HARDLY EVER SEEN)**
71. **9 3/4" TALL FENTON FINE RIB STANDARD SWUNG VASE – RED (A DARK RED EXAMPLE; SUPER COLOR AND DARK FINISH)**
72. **9 1/2" TALL FENTON FINE RIB STANDARD SWUNG VASE – AMBERINA WITH RED STREAKS (VERY SCARCE AND UNUSUAL QUALITY; DIFFERENT)**
73. Fenton Butterfly and Berry ftd. Covered Butter Dish – Blue (satiny; silvery / gold finish; rare)
74. Fenton Butterfly and Berry ftd. Creamer – Blue (very scarce)
75. **9 1/4" FENTON PETER RABBIT FLAT PLATE – BLUE (EXTREMELY RARE & VERY DESIRABLE; EXCELLENT COLOR, DETAIL & IRID.; GREAT EXAMPLE)**
76. **7 5/8" FENTON PINE CONE LARGE SIZE FLAT PLATE – BLUE (VERY SCARCE SIZE WITH GREAT IRID.)**
77. 6 1/4" Fenton Pine Cone Plate – Amyth. (scarce; satiny)
78. 7 1/2" Fenton Vintage Grape Flat Plate – Mari. (scarce color; nice)
79. 7 1/2" Fenton Vintage Grape Flat Plate – Green (has a radium silvery irid.)
80. **10 7/8" FENTON LOTUS AND POINSETTIA BALL FTD. FLAT CHOP PLATE – DK. MARI. (EXTREMELY RARE AND VERY DESIRABLE; GREAT COLOR AND IRID.)**
81. 8 7/8" Fenton Little Fishes Lg. ball ftd. I.C. Shaped Bowl – Mari. (nice size; attractive irid.)
82. **7 5/8" FENTON PEACOCK AND DAHLIA FLAT PLATE – MARI. (RARE AND DESIRABLE; A DARKER EXAMPLE WITH GREAT DETAIL)**
83. 9 1/4" Fenton Peacock at the Urn Flared Plate – Blue (very scarce with a nice multi-colored irid.)
84. 8 3/4" Fenton Peacock at the Urn Flared Plate – Blue (nice color and irid.)
85. **10" FENTON FANTAIL INT. / BUTTERFLY AND BERRY EXT. LG. BALL FTD. 6 RUFFLED BOWL – ELEC. BLUE (SUPER IRID.; REALLY NICE; VERY ATTRACTIVE)**
86. **6 3/4" FENTON BLACKBERRY LG. SIZE 2 ROW OPEN EDGE 6 RUFFLED HAT – RED (ATTRACTIVE IRID.; BRIGHT EXAMPLE; NICE)**
87. Fenton 2 Row Open Edge 4 sided Hat – Red (very scarce shape; great red)
88. Fenton 2 Row Open Edge 2 sided hat – Ice Green (very desirable; great color and irid.)
89. Fenton Daisy Cut Dinner Bell – Lt. Mari. / Clear (very scarce item; has spotty irid.)
90. **8 1/4" FENTON ORANGE TREE I.C. SHAPED BOWL – RED (RARE AND VERY DESIRABLE; GREAT IRID. WITH A NICE SATINY IRID.)**
91. **FENTON FOOTED ORANGE TREE HATPIN HOLDER – ELEC. BLUE (FANTASTIC BLUE HIGHLIGHTS; AS PRETTY AS THEY GET)**
92. **FENTON ORANGE TREE HANDLED LOVING CUP – GREEN (VERY ATTRACTIVE EXAMPLE; GREAT COLOR AND IRID.)**
93. Fenton Orange Tree Handled Loving Cup – Blue (another really nice example with bright highlights)
94. Fenton Orange Tree Handled Loving Cup – Mari. (scarce; average color)
95. **FENTON ORANGE TREE 8 PC. RUFFLED PUNCH SET – WHITE (RARE AND FROSTY AND PERFECT AND COMPLETE)**
96. Fenton Orange Tree Flared Punch Bowl Base – Blue (sorta squatty and flared)
97. Fenton Footed Orange Tree Hatpin Holder – Blue (nice satiny finish; scarce)
98. Fenton Pond Lily 4 sided 2 Handled Bon Bon – Amyth. (scarce color; satiny)
99. Fenton Pond Lily 4 sided 4 sided 2 Handled Bon Bon – White (excellent irid.)
100. **9 1/2" FENTON SPECTORS DEPARTMENT STORE / HEART AND VINE PLATE – MARI. (RARE AND VERY DESIRABLE ITEM)**
101. **9" FENTON PERSIAN MEDALLION FLARED PLATE – BLUE / ELEC. BLUE (REALLY NICE EXAMPLE WITH ELEC. BLUE HIGHLIGHTS)**
102. **FENTON PERSIAN MEDALLION 2 HANDLED 4 SIDED BON BON – RED (RARE; A NICE DARK RED EXAMPLE)**
103. Fenton Persian Medallion 2 Handled 4 sided Bon Bon – Aqua (very scarce; nice color and irid.)
104. **FENTON LOTUS AND GRAPE 2 SIDED 2 HANDLED BON BON – RED / SLAG (ANOTHER RARE RED ITEM; SORTA SLAGGY)**
105. **9 3/4" FENTON VINTAGE GRAPE LG. 8 RUFFLED BOWL – RED (NICE LARGE RED EXAMPLE; SUPER RED WITH A SILVERY FINISH)**
106. **6 1/4" FENTON ACORN DEEP ROUND BOWL – RED / AMBERINA (VERY SCARCE; HAS A SATINY FINISH)**
107. Fenton Blackberry Spray 4 sided Hat – Red (nice red example; silvery)
108. **FENTON BLACKBERRY SPRAY J.I.P. CRIMPED EDGE HAT – RED (NICE COLOR AND SHAPE)**
109. Fenton Blackberry Spray 6 Ruffled Crimped Edge Hat – Dark Amber (great color and shape)
110. 6 1/2" Fenton Stippled Rays 6 Ruffled Sauce – Reverse Amberina (very scarce color variation)
111. Fenton Milady Tankard Water Pitcher – Lt. Mari. (rare and desirable item with average color)
112. Fenton Milady Tumbler – Lt. Mari. (has lighter color)
113. Fenton Stretch 8 pc. Nut Set with Ladle – Celeste Blue (very scarce set; nice color)
114. Fenton Stretch Enameled Art Deco ind. ftd. Nut Cup – Florentine Green (very unusual decoration – very desirable mini item)
115. **18 1/2" TALL X 5 1/4" BASE WITH AN 8 1/2" WIDTH FENTON DIAMOND RIB SWUNG FUNERAL VASE – AMYTH. (RARE & VERY DESIRABLE; BRIGHT AMETHYST COLOR & IRID.)**



- \_\_\_ 116. **20 3/4" TALL X 5 1/4" BASE WITH A 7 1/2" WIDTH FENTON RUSTIC SWUNG FUNERAL VASE – BLUE (A VERY TALL EXAMPLE; NICE COLOR)**
- \_\_\_ 117. **19 1/4" TALL X 5 1/8" BASE WITH A 6 3/4" WIDTH FENTON RUSTIC SWUNG FUNERAL VASE – MARI. (NICE COLOR; VERY SCARCE AND VERY DESIRABLE)**
- \_\_\_ 118. 17" Tall Fenton Rustic Mid size Swung Vase – Mari. (nice color and irid.)
- \_\_\_ 119. 15 1/2" Tall Fenton Rustic Mid size Swung Vase – Amyth. (another nice example)
- \_\_\_ 120. 14 1/2" Tall Fenton Rustic Mid size Swung Vase – Green (attractive item with bright irid.)
- \_\_\_ 121. 14 1/2" Tall Fenton Bullseye and Beads Mid size Swung Vase – Blue (scarce; nice color and irid.)
- \_\_\_ 122. 12 1/2" Tall Fenton Diamond Point Columns Swung Vase – Green (really nice example)
- \_\_\_ 123. 10 1/2" Fenton Long Thumbprint Swung Vase–Green
- \_\_\_ 124. Fenton Holly 6 Ruffled Hat with Manuf. ground base – Green (scarce)
- \_\_\_ 125. **9" FENTON AUTUMN ACORN FLARED PLATE – GREEN (RARE AND VERY DESIRABLE ITEM; GREAT COLOR AND IRID.)**
- \_\_\_ 126. **8 3/4" FENTON VINTAGE GRAPE 8 RUFFLED BOWL – PERSIAN BLUE / MARI. (VERY RARE & DESIRABLE ITEM; GETTING TOUGH TO FIND)**
- \_\_\_ 127. 9" Fenton Peacock at the Urn Flat Plate – Mari. (very scarce; nice color)
- \_\_\_ 128. 8 1/2" Fenton Flowers ftd. 6 Ruffled Whimsey from Rose Bowl – Green (unusual ruffled example in a scarce color)
- \_\_\_ 129. 8 1/4" Fenton Vintage Grape ftd. Fern Dish Whimsey with 3 in 1 Edge – Amyth. (another unusual item not often found; nice)
- \_\_\_ 130. **9 1/8" FENTON DRAGON AND STRAWBERRY LG. I.C. SHAPED BOWL – BLUE (RARE & VERY DESIRABLE; REALLY NICE COLOR & IRID.)**
- \_\_\_ 131. **7 3/4" FENTON CORAL I.C. SHAPED BOWL – GREEN (VERY SCARCE & VERY DESIRABLE; GREAT COLOR)**
- \_\_\_ 132. **10 7/8" FENTON CHERRY CHAIN CHOP PLATE WITH O.T. EXT. – WHITE (RARE AND VERY DESIRABLE; SUPER TOUGH; SUPER IRID.)**
- \_\_\_ 133. **FENTON PANELED DANDELION 5 PC. TANKARD WATER SET WITH VARIATION OF HANDLE APPLICATION – MARI. (RARE VARIATION; THE HANDLE IS APPLIED ON A CORNER OF THE PANELS)**
- \_\_\_ 134. (5) Phlox Enameled Decorated Tumblers – Amyth. (selling 5 x the money)
- \_\_\_ 135. **FENTON ENAMELED FORGET-ME-NOT 7 PC. TANKARD WATER SET WITH PRISM BAND MOLD – BLUE (RARE AND VERY DESIRABLE COMPLETE WATER SET; REALLY NICE DECORATION)**
- \_\_\_ 136. Fenton Enameled Forget-Me-Not Tumbler – Blue (satiny; nice enameled decor.)
- \_\_\_ 137. **FENTON ZIG ZAG ENAMELED COLUMBINE BULBOUS WATER PITCHER – BLUE (RARE AND VERY DESIRABLE; NICE DECORATION AND IRID.)**
- \_\_\_ 138. **FENTON PRISM BAND ENAMELED DIANTHUS 6 PC. TANKARD WATER SET – ICE GREEN (GREAT SET; NICE PASTEL FINISH AND IRID.)**
- \_\_\_ 139. Fenton Enameled Shasta Daisy Tumbler – White (nice irid. and decor.)
- \_\_\_ 140. **FENTON ENAMELED DIAGONAL BAND WITH IRIS TANKARD WATER PITCHER – GREEN (GREAT COLOR AND IRID.; GREAT SHAPE)**
- \_\_\_ 141. (2) Fenton Enameled Prism Band Tumblers (Flowers?) – Green (selling so much x 2)
- \_\_\_ 142. Fenton Enameled Freesia Tankard Water Pitcher – Mari. / Clear (scarce; desirable)
- \_\_\_ 143. Fenton Enameled Magnolia Tumbler – Mari. (satiny finish)
- \_\_\_ 144. **9 1/4" FENTON LEAF CHAIN FLARED PLATE – DK. MARI. (ABSOLUTELY SUPER EXAMPLE; DARK COLOR – NICE!)**
- \_\_\_ 145. **M'BURG HANGING CHERRIES STEMMED ROUND COMPOTE – AMYTH. (EXTREMELY RARE AND VERY DESIRABLE; NICE FINISH)**
- \_\_\_ 146. **8 7/8" M'BURG TROUT AND FLY BOWL WITH 3 IN 1 EDGE – GREEN (SATINY AND VERY SCARCE; NICE IRID.)**
- \_\_\_ 147. 8 3/4" M'burg Trout and Fly 6 Ruffled Bowl – Amyth. (satiny and scarce; very desirable)
- \_\_\_ 148. 8 1/2" M'burg Trout and Fly 6 Ruffled Bowl – Dk. Mari. (another nice satiny example; very scarce)
- \_\_\_ 149. 6 1/8" M'burg Grape Wreath Variant low 6 Ruffled Sauce – Green (radium and very desirable; nice)
- \_\_\_ 150. **6 1/4" M'BURG HANGING CHERRIES SAUCE WITH 3 IN 1 EDGE – BLUE (EXTREMELY DESIRABLE & VERY ATTRACTIVE; SATINY; LOOKS BLUE)**
- \_\_\_ 151. 7" M'burg Blackberry Wreath Round Flared Bowl with T.C.E. – Amyth. (unusual shape with a great radium finish)
- \_\_\_ 152. **8 7/8" M'BURG FLEUR DE LIS DOMED I.C. SHAPED BOWL – DK. MARI. (RADIUM AND VERY DESIRABLE WITH A BRIGHT IRID.)**
- \_\_\_ 153. **9" M'BURG FLEUR DE LIS DOMED TRI-CORNERED CRIMPED EDGE BOWL – DK. MARI. (RADIUM; VERY RARE & DESIRABLE SHAPE; NICE)**
- \_\_\_ 154. 9 3/4" M'burg Fleur de Lis domed Flared Bowl with 3 in 1 Crimped Edge – Green (satin and very desirable; really nice)
- \_\_\_ 155. **M'BURG ROSE COLUMNS VASE – AMYTH. (HAS TO BE ONE OF THE BETTER EXAMPLES I'VE SEEN; HAS GREAT BLUE HIGHLIGHTS – JUST REALLY ATTRACTIVE)**
- \_\_\_ 156. 9 3/4" M'burg Nesting Swan 6 Ruffled Bowl – Amyth. (scarce with a satiny finish)
- \_\_\_ 157. 9 3/4" M'burg Holly Whirl Lg. 6 Ruffled Bowl – Amyth. (super radium example; great color)
- \_\_\_ 158. M'burg Ohio Star Lg. Cylinder Vase–Crystal (scarce)
- \_\_\_ 159. 9" M'burg Peacock at the Urn "Mystery" Bowl with 3 in 1 Edge – Amyth. (radium; very desirable; nice)
- \_\_\_ 160. **CAMBRIDGE INVERTED STRAWBERRY COVERED BUTTER DISH – MARI. (QUITE A RARE ITEM TO FIND... EVER!)**
- \_\_\_ 161. Cambridge Inverted Strawberry Handled Creamer – Mari. (very scarce item; satiny finish)
- \_\_\_ 162. Cambridge Inverted Strawberry Spooner – Mari. (another scarce item; satiny irid.)
- \_\_\_ 163. 8 1/4" Cambridge Inverted Strawberry Deep Round Undersized Berry Bowl – Green (odd size in a scarce color)
- \_\_\_ 164. 8 1/4" Cambridge Inverted Strawberry Turned in Master Berry Bowl – Amyth. (very desirable; sorta rose bowl shaped)
- \_\_\_ 165. **9 1/4" EUROPEAN FOUR FLOWERS VARIANT FLARED PLATE WITH MANUF. GROUND BASE – ODD GREEN (SORTA PASTEL WITH GREAT IRID.)**
- \_\_\_ 166. Imperial Tiger Lily Handled Water Pitcher with (2) Tumblers – Helios Green (nice color; silvery irid.)
- \_\_\_ 167. **IMPERIAL FASHION HANDLED WATER PITCHER – SMOKE (RARE & DESIRABLE; GREAT COLOR & IRID.)**
- \_\_\_ 168. Imperial Windmill Handled Milk Pitcher – Smoke (very scarce; really nice color and irid.)
- \_\_\_ 169. 7 3/4" Tall Imperial Miniature Morning Glory Swung Vase – Smoke (nice irid.)
- \_\_\_ 170. **6 3/8" TALL X 6 1/4" FLARED IMPERIAL PARLOR PANELS SQUATTY FLARED VASE – SMOKE (RARE AND VERY DESIRABLE SIZE; HAS NICE BLUE HIGHLIGHTS)**





Lot 271



Lot 52



Lot 365



Lot 315



Lot 80



Lot 35



Lot 85



Lot 150



Lot 175



Lot 145

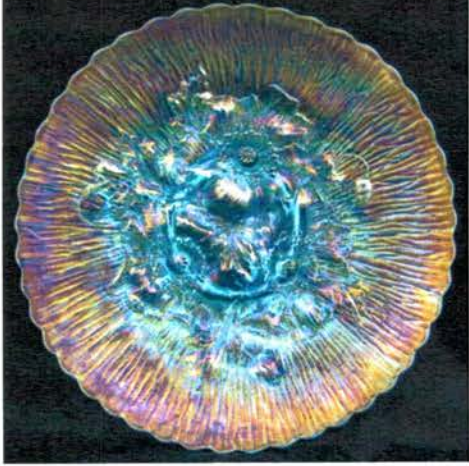


Lot 203



Lot 270





Lot 345



Lot 53



Lot 272



Lot 36



Lot 100



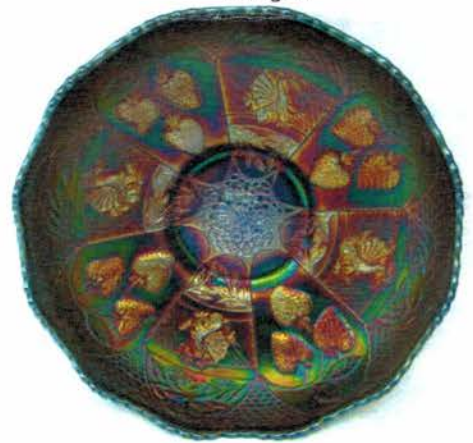
Lot 316



Lot 132



Lot 347



Lot 130



Lot 266



Lot 317



Lot 255



___171.	<b>9 5/8" IMPERIAL SHELL FLAT PLATE – SMOKE (FLAT AND RARE WITH EXCELLENT IRID.; REALLY NICE)</b>	___200.	<b>10 7/8" DUGAN FARMYARD BOWL WITH 3 IN 1 CANDY RIBBON EDGE AND J.H. EXT. – PURP. (FANTASTIC EXAMPLE BRIGHT MULTI-COLORED IRID.; ABSOLUTELY SUPER)</b>
___172.	Imperial – signed Iron Cross – Optic and Buttons Handled Cider Pitcher – non-iridized Teal (not iridized but has a great color and look)	___201.	10 5/8" Dugan Victorian Lg. 6 Ruffled Bowl – Amyth. (satiny and very desirable)
___173.	13 3/8" Tall x 3 3/8" Base Imperial Ripple Swung vase – non-iridized Powder Blue Opal (super desirable; odd blue with great opal.)	___202.	Dugan Paneled Cherries 3 ftd. 10 Ruffled 2 sided Banana Dish – Purp. (1/2 is elec. Blue; ½ is goldish; scarce shape)
___174.	12 ¼" Tall x 3 3/8" Base Imperial Ripple Swung vase – Purp. (super color with great irid.; really attractive)	___203.	<b>DUGAN FISHNET SINGLE LILY EPERGNE WITH 3 IN 1 EDGE – AMYTH. (VERY SCARCE; NICE SATINY EXAMPLE)</b>
___175.	<b>10 3/8" IMPERIAL CHRYSANTHEMUM CHOP PLATE – NOT SIGNED – WHITE (RARE AND VERY DESIRABLE; FROSTY WITH A GREAT PASTEL FINISH)</b>	___204.	<b>9" DUGAN APPLE BLOSSOM TWIGS LOW 10 RUFFLED BOWL – PURP. (SUPER MULTI-COLORED HIGHLIGHTS)</b>
___176.	<b>11 ¼" IMPERIAL HEAVY GRAPE CHOP PLATE – AMYTH. (ABSOLUTELY SUPER EXAMPLE A BEAUTY!)</b>	___205.	<b>9" DUGAN ROUND UP LOW 10 RUFFLED BOWL / PLATE – PURP. (SUPER, SUPER EXAMPLE – FANTASTIC!)</b>
___177.	6 3/8" Imperial Grape Flat Plate – Amyth. (another beautiful – but smaller – example)	___206.	<b>8 7/8" DUGAN ROUND UP FLAT PLATE – ODD AMBER / AMYTH. (ODD LOOKING BASE COLOR; FLAT AND NICE)</b>
___178.	9 ¼" Imperial Embossed Scroll Flat Plate – Amyth. (one more item – great example with great color)	___207.	<b>9" DUGAN ROUND UP FLAT PLATE – BLUE (NICE FLAT EXAMPLE; VERY DESIRABLE)</b>
___179.	7 7/8" Imperial Heavy Grape Flat Plate – Amyth. (super example)	___208.	6 ½" Dugan Cherries low Flared T.C.E. Plate – Amyth. (scarce; goldish)
___180.	<b>17 ¼" TALL X 4 7/8" BASE IMPERIAL MORNING GLORY SWUNG FUNERAL VASE – SMOKE (VERY DESIRABLE &amp; VERY RARE; REALLY TOUGH BASE COLOR – NICE!)</b>	___209.	9" Dugan Windflower Flat Plate – Blue (very scarce; has a satiny finish)
___181.	<b>14 ¾" TALL X 4" BASE X 6" TOP DIAM. IMPERIAL RIPPLE MID SIZE SWUNG VASE – PURP. (GREAT SIZE AND IRID.; A WONDERFUL EXAMPLE)</b>	___210.	<b>DUGAN BUTTERFLY AND TULIP 4 FTD. 4 SIDED SQUARE BOWL WITH I.F.F. EXT. – PURP. (VERY RARE AND VERY DESIRABLE; PERFECT WITH GREAT IRID. – NICE!)</b>
___182.	11 ¼" Tall x 3 ½" Base Imperial Ripple Swung Vase – Purp. (a beaut!)	___211.	<b>9" DUGAN FLOWERS AND FRAMES TRI-CORNERED CRIMPED EDGE DOMED BOWL – PURP. (ABSOLUTELY SUPER EXAMPLE; BRIGHT IRID.)</b>
___183.	7 ¾" Tall x 3 7/16" Base x 6: Top Diam. Imperial Ripple Squatty Swung Vase – Purp. (nice squatty example)	___212.	9" Dugan Flowers and Frames domed 10 Ruffled Bowl – Purp. (scarce item; really nice irid.)
___184.	4 ½" Tall x 2 9/16" Base x 3 ½" Top Diam. Imperial Miniature Morning Glory Squatty Flared Vase – Purp. (great size with great irid.)	___213.	9 ¼" Dugan Cherries 6 Ruffled Bowl with J.H. Ext. – Purp. (super blue highlights; excellent example)
___185.	<b>5 5/8" TALL X 3 5/8" TOP DIAM. IMPERIAL MINIATURE MORNING GLORY AND DRAPE SWUNG VASE – PURP. (RARE AND VERY DESIRABLE; GREAT COLOR AND IRID.)</b>	___214.	8 ½" Dugan Fanciful low 10 Ruffled Bowl / Plate – Blue (very scarce; subdued satiny finish)
___186.	11 7/8" Tall x 5" Top Diam. Imperial Beaded Bullseye Swung Vase – Purp. (another super example; nice)	___215.	<b>DUGAN DAHLIA 7 PC. FTD. WATER SET – AMYTH. (VERY RARE AND VERY DESIRABLE SET – REALLY TOUGH!)</b>
___187.	9 1/8" Tall x 5" Top Diam. Imperial Beaded Bullseye Swung Vase – Purp. (another super example; nice)	___216.	<b>8 7/8" TALL DUGAN CIRCLE SCROLL WHIMSEY SWUNG VASE – PURP. (VERY SCARCE WITH EXCELLENT IRID.)</b>
___188.	5 ¾" Tall x 2 ½" Base x 3 5/8" Top Diam. Imperial Ripple Miniature Swung Vase – Mari. (a cutie; a satiny finish)	___217.	4 ¾" Tall x 5 ¾" Diam. Dugan Vining Twigs Squatty Flared 8 Ruffled Vase – Purp. (very desirable color and irid.)
___189.	13 1/8" Tall x 4 ¾" Base x 8" Top Diam. Imperial Ripple Squatty Swung Funeral Vase – Dk. Mari. (great size with a desirable look!)	___218.	Dugan Nautilus Whimsey Creamer Novelty – Purp. (signed "Northwood" in script)
___190.	<b>IMPERIAL ZIPPER HEART 7 PC. RUFFLED BERRY SET – PURP. (RARE AND DESIRABLE SET; GREAT COLOR AND IRID.)</b>	___219.	Dugan Nautilus Whimsey Open Sugar Novelty – Purp. (nice color and irid.)
___191.	8 ¾" Imperial Star of David 8 Ruffled Bowl – Purp. (very scarce; has great highlights; nice)	___220.	<b>11 ¼" DUGAN HEAVY WEB LG. ROUND FLARED CENTER BOWL – P. OPAL. (VERY RARE DUGAN PATTERN; EXCELLENT EXAMPLE)</b>
___192.	8 5/8" Imperial Cobblestone Deep 8 Ruffled Bowl – Amyth. (goldish; odd irid.)	___221.	10 ½" Dugan Int. Rays Lg. 8 Ruffled Bowl with J.H. Ext. – P. Opal. (nice example)
___193.	Imperial Crab Claw Handled Water Pitcher – Mari. (scarce pattern)	___222.	10" Dugan Garden Path Variant Lg. 6 Ruffled Bowl with Soda Gold Ext. – Lt. P. Opal. (light in color & irid.)
___194.	Imperial Tiger Lily Tumbler – Purp. (scarce; super irid.)	___223.	8 ¾" Dugan Apple Blossom Twig Bowl with Plain Edge and 3 in1 C.R.E. – P. Opal. (nice color & irid.)
___195.	<b>IMPERIAL DIAMOND LACE 7 PC. WATER SET – PURP. (VERY DESIRABLE SET; GREAT BRIGHT IRID.; NICE!)</b>	___224.	6 ½" Dugan Four Flowers Plate with Basketweave Ext. – P. Opal. (nice color and irid.)
___196.	Dugan Fishermans Handled Mug – Dk. Mari. (scarce; nice)	___225.	<b>8 5/8" DUGAN SOUTACHE DOMED DEEP FLARED PLATE WITH FLORAL EXT. – P. OPAL. (RARE SHAPE; SORTA DEEP – TOUGH ITEM)</b>
___197.	Dugan Fishermans Handled Mug with Enameled Compliments of a Harrisburg, PA Store – Purp. (odd item; nice)	___226.	<b>8 ¾" DUGAN SOUTACHE DOMED 6 RUFFLED CRIMPED EDGE BOWL – DK. P. OPAL. (ANOTHER TOUGHIE; PROBABLY THE NICEST EXAMPLE I'VE SEEN)</b>
___198.	<b>DUGAN "GOD BLESS OUR HOME" GOD AND HOME TUMBLER – BLUE (VERY SCARCE; EXCELLENT EXAMPLE)</b>	___227.	7 ¾" Dugan Border Plants domed deep 10 Ruffled Bowl – P. Opal. (very scarce pattern; nice opal.)
___199.	6 ¼" Dugan Int. Rays low 8 Ruffled Sauce with J.H. Ext. – Amyth. (bright yellow and reds)	___228.	8 ½" x 8" Dugan Ski Star domed Oval Banana Boat – P. Opal. (super example nice opal.)



228A.	8 1/2" X 8" DUGAN SKI STAR DOMED OVAL BANANA BOAT – PURP. (SUPER EXAMPLE; SCARCE)	257.	N G & C ftd. Hatpin Holder – Purp. (scarce; satiny finish)
229.	9" Dugan Single Flower Ext. Bowl with 3 in 1 Edge and Enameled Decoration – P. Opal. (excellent example)	258.	N G & C ftd. Hatpin Holder – Dk. Mari. (scarce; nice color)
230.	8" DUGAN STIPPLED PETAL DOMED DEEP FLARED PLATE WITH ENAM. FLORAL DECORATION – P. OPAL. (SCARCE ITEM WITH NICE DECORATION)	259.	N G & C Covered Sweetmeat Compote – Purp. (scarce; sorta silver)
231.	8 5/8" Dugan Paneled Cherries Ext. 3 ftd. 10 Ruffled Bowl with Enam. Floral Decor. – Dk. P. Opal. (super bright example with great irid.)	260.	<b>N G &amp; C FTD. FERNERY – DK. MARI. (RARE &amp; VERY DESIRABLE; NICE COLOR &amp; IRID.)</b>
232.	9" Dugan Fanciful 10 Ruffled Bowl / Plate – White (frosty with nice irid.)	261.	<b>(4) N G &amp; C SHOT GLASSES – PURP. (VERY DESIRABLE; SELLING 4X THE MONEY)</b>
233.	7 1/4" Dugan Persian Garden Flat Plate – White (super irid.)	262.	7 7/8" N G & C Handgrip Plate with Basketweave Ext. – Amyth. (satiny finish)
234.	7" Dugan Question Mark ftd. Flared Plate with Puzzle and Ga. Peach Ext. – Mari. (satiny; scarce)	263.	N G & C 2 Handled 4 sided Bon Bon with Basketweave Ext. – Blue (very scare; has blue highlights)
235.	<b>4" TALL X 6 1/8" DIAM. DUGAN BIG BASKETWEAVE SQUATTY 8 RUFFLED HAT OR FRUIT BOWL BASE – DK. ICE BLUE (EXTREMELY RARE &amp; VERY DESIRABLE; HAS SUPER IRID. – NEVER SEEN BEFORE; WOW!)</b>	264.	<b>N BUTTERFLY 2 HANDLED 3 SIDED BON BON WITH SPIRAL EXT. – BLUE / ELEC. BLUE (VERY DESIRABLE WITH BRIGHT BLUE HIGHLIGHTS)</b>
236.	11 3/8" Tall Dugan Big Basketweave Swung Vase – non-iridized Celeste Blue (scarce; nice)	265.	<b>N GREEK KEY 5 PC. TANKARD WATER SET – GREEN (RARE AND VERY DESIRABLE SET; REALLY TOUGH!)</b>
237.	<b>10 1/8" TALL DUGAN BIG BASKETWEAVE SWUNG VASE – ODD AMYTH. (UNUSUAL BASE COLOR; TOUGH TO FIND; NICE)</b>	266.	<b>N GREEK KEY HANDLED WATER PITCHER – PURP. (RARE AND DESIRABLE; NICE IRID.)</b>
238.	10" Tall Dugan Big Basketweave Swung Vase – Blue (very scarce base color; very desirable)	267.	<b>N GREEK KEY 7 PC. TANKARD WATER SET – DK. MARI. (VERY RARE COMPLETE SET; GREAT COLOR)</b>
239.	5 1/4" Tall Dugan Woodlands Bud Vase – Gold Flash (very scarce and unusual)	268.	<b>N ENAMELED APPLE BLOSSOM BULBOUS WATER PITCHER – BLUE (VERY RARE ITEM TO FIND; NICE DECORATION)</b>
240.	<b>5 1/8" TALL DUGAN WOODLANDS BUD VASE – MARI. (VERY SCARCE &amp; VERY TOUGH TO FIND; NICE)</b>	269.	N Enameled Apple Blossom Tumbler – Blue (scarce; nice)
241.	<b>DUGAN CHERRY WREATH HANDLED WATER PITCHER – WHITE WITH RED CHERRIES (RARE AND DESIRABLE; FROSTY AND NICE)</b>	270.	<b>N PEACOCK AT THE FOUNTAIN HANDLED WATER PITCHER – ELEC. BLUE (A BEAUTY WITH BRIGHT BLUE HIGHLIGHTS)</b>
242.	(2) Dugan Cherry Wreath Tumblers – White with Red Cherries (selling x2; frosty and really nice)	271.	<b>9" N GREEK KEY 8 RUFFLED BOWL WITH RIBBED EXT. – BLUE (RARE AND DESIRABLE ITEM WITH BLUE HIGHLIGHTS)</b>
243.	<b>8 5/8" DUGAN PONY 6 RUFFLED BOWL – AQUA / MARI. (VERY RARE BASE COLOR; SATINY LT. MARI. OVERLAY)</b>	272.	<b>8 3/4" N EMBROIDERED MUMS 8 RUFFLED BOWL WITH RIBBED EXT. – BLUE / ELEC. BLUE (ANOTHER DESIRABLE ITEM WITH BRIGHT BLUE HIGHLIGHTS)</b>
244.	Dugan (or N'wood) G & C Oval ftd. Banana Boat – Purp. (scarce; nice irid.)	273.	N Grape and Gothic Arches 7 pc. Water Set – Blue (very scarce to find this complete set)
245.	Dugan (or N'wood) G & C Oval ftd. Stippled Banded Banana Boat – Mari. (nice bright irid.; very scarce variation)	274.	N Singing Bird Handled Mug – Blue (nice example)
246.	N G & C Small size ftd. Ruffled Fruit Bowl – Purp. (scarce; nice)	275.	<b>15" TALL X 5 1/4" BASE X 9" TOP DIAM. N TREE TRUNK SQUATTY ELEPHANT'S FOOT FUNERAL VASE – PURP. (VERY RARE; EXTREMELY DESIRABLE; HAS A STRONG SATINY FINISH)</b>
247.	N G & C Covered Handled Cracker Jar – Purp. (very desirable; scarce with nice irid.)	276.	13" Tall x 4 3/4" Base N Thin Rib Mid size Swung Vase – White (very scarce; frosty with nice irid.)
248.	N G & C Covered Handled Cracker Jar – Dk. Mari. (scarce; nice dark color)	277.	12" Tall x 4 3/4" Base N Thin Rib Mid size Swung Vase – Green (another scarce item with nice satiny highlights)
249.	<b>N G &amp; C STIPPLED COVERED TOBACCO HUMIDOR – DK. MARI (RARE ITEM; PRONGS ARE OK; GREAT IRID.)</b>	278.	13 3/8" Tall x 4 3/4" Base N Thin Rib Mid size Swung Vase – Dk. Mari. (super example; nice size)
250.	<b>N G &amp; C FTD. TURNED IN CENTERPIECE BOWL – ICE GREEN (RARE AND DESIRABLE COLOR WITH GREAT IRID.)</b>	279.	<b>10 5/8" TALL N THIN RIB STANDARD SWUNG VASE – VASELINE (RARE AND VERY DESIRABLE BASE COLOR; FROSTY INT.)</b>
251.	<b>N G &amp; C FTD. TURNED IN CENTERPIECE BOWL – DK. MARI. (SUPER COLOR; DESIRABLE)</b>	280.	<b>18 1/2" TALL X 5 1/4" BASE X 7 1/2" TOP DIAM. N TREE TRUNK SWUNG FUNERAL VASE - PURP. (VERY RARE &amp; VERY DESIRABLE SUPER IRID.)</b>
252.	<b>10 1/2" N G &amp; C ICE CREAM BOWL WITH BASKETWEAVE EXT. – GREEN (VERY RARE COLOR; TOUGH TO FIND)</b>	281.	13 5/8" Tall x 4 3/4" Base x 5 1/2" Top Diam. N Tree Trunk Mid size Swung Vase – Green (attractive satiny finish)
253.	10 1/2" N G & C Ice Cream Bowl with Basketweave Ext. – White (scarce; has excellent irid.)	282.	11" Tall N Tree Trunk Standard Swung Vase – White (scarce; nice irid.)
254.	N G & C Cologne Bottle and Stopper – Amyth. (very scarce; nice color and irid.)	283.	<b>8 1/4" TALL N DIAMOND POINT SWUNG VASE – ICE GREEN (VERY SCARCE; VERY DESIRABLE; NICE IRID.)</b>
255.	<b>N G &amp; C 2 PC. CANDLE LAMP AND SHADE – AMYTH. (RARE AND VERY DESIRABLE; GREAT COLOR AND IRID. – REALLY NICE!)</b>	284.	8 3/4" Tall N Drapery Variant Swung Vase – Blue (scarce; bright irid.)
256.	N G & C ftd. Hatpin Holder – Green (scarce; satiny finish)	285.	<b>8 1/2" TALL N DRAPERY 3 FTD. VASE – LIME ICE GREEN (SCARCE BASE COLOR; TOUGH TO FIND – NICE!)</b>
		286.	8" Tall N Drapery 3 ftd. Swung Vase – Dk. Mari. (really nice dark color)



\_\_\_ 287. N Drapery Tri-Cornered ftd. Candy Dish – Amyth. (super int. irid.)  
 \_\_\_ 288. 7 ¾" Tall N Drapery 3 ftd. Swung Vase – Aqua Opal. (damaged foot but still desirable)  
 \_\_\_ 289. 7 7/8" Tall N Leaf Columns Squatty Flared Vase – Purp. (nice size and bright highlights)  
 \_\_\_ 290. **N STRETCH CONCAVE DIAMOND TANKARD TUMBLER – VASELINE (SUPER DESIRABLE ITEM)**  
 \_\_\_ 291. N Stretch Concave Diamond 8 Pc. Covered Lemonade Set – Celeste Blue (scarce and desirable set – just needs the coasters)  
 \_\_\_ 292. N Stretch Concave Diamond Bulbous Tri-Cornered Vase – Celeste Blue (scarce; frosty and stretchy)  
 \_\_\_ 293. **N DANDELION HANDLED MUG – AQUA OPAL. (RARE; DESIRABLE; NICE OPAL. AND IRID.)**  
 \_\_\_ 294. N Oriental Poppy Tumbler with Ribbed Int. – Ice Blue (very scarce and tough to find)  
 \_\_\_ 295. **N ORIENTAL POPPY TANKARD WATER PITCHER – PURP. (VERY DESIRABLE; NICE COLOR AND IRID.)**  
 \_\_\_ 296. (2) Oriental Poppy Tumblers – Purp. (selling 2x the money; nice)  
 \_\_\_ 297. **N ORIENTAL POPPY 7 PC. TANKARD WATER SET – DK. MARI. (PITCHER HAS RIBBED INT.; VERY ATTRACTIVE SET)**  
 \_\_\_ 298. **N DRAPERY ROSE BOWL – BLUE (VERY SCARCE; SUPER BLUE HIGHLIGHTS)**  
 \_\_\_ 299. N Drapery Rose Bowl – Aqua Opal. (very scarce and desirable)  
 \_\_\_ 300. **10 ½" N PEACOCK AT THE URN FLARED CHOP PLATE – ICE GREEN (EXTREMELY RARE & VERY DESIRABLE; PERFECT WITH EXCELLENT IRID.; VERY NICE)**  
 \_\_\_ 301. **9 ¾" N PEACOCK AT THE URN LG. I.C. BOWL – BLUE (GREAT DETAIL AND BLUE HIGHLIGHTS – REALLY NICE)**  
 \_\_\_ 302. (4) N Peacock at the Urn ind. I.C. Bowls – Blue (selling all 4x the money; nice)  
 \_\_\_ 303. **9" N EMBROIDERED MUMS PLATE WITH RIBBED EXT. – LIME ICE GREEN (RARE AND VERY DESIRABLE; GREAT COLOR AND IRID.)**  
 \_\_\_ 304. 8 ¾" N Embroidered Mums 8 Ruffled Bowl with Ribbed Ext. – Ice Blue (dark color; great irid.)  
 \_\_\_ 305. **N SPRINGTIME 7 PC. WATER SET – GREEN (RARE AND VERY DESIRABLE – GREAT COLOR AND IRID.)**  
 \_\_\_ 306. **N SPRINGTIME 6 PC. TABLE SET – GREEN (RARE & VERY DESIRABLE; REALLY NICE!)**  
 \_\_\_ 307. **N HEARTS AND FLOWERS STEMMED 6 RUFFLED COMPOTE WITH RIBBED EXT. – PASTEL AQUA OPAL. (SUPER ATTRACTIVE; PASTEL WITH SUPER IRID.)**  
 \_\_\_ 308. 9" N Hearts and Flowers Flared Plate with Ribbed Ext. – Mari. (very scarce; has a light Mari. Finish)  
 \_\_\_ 309. 8 7/8" N Hearts and Flowers 8 Ruffled Bowl with Ribbed Ext. – Ice Blue (super; has pink highlights)  
 \_\_\_ 310. **N TORNADO LG. SIZE TRI-CORNERED VASE – GREEN (RARE AND VERY DESIRABLE; PERFECT WITH GREAT IRID.)**  
 \_\_\_ 311. **N TORNADO SMALL SIZE TRI-CORNERED VASE – PURP. (ANOTHER VERY DESIRABLE ITEM WITH GREAT COLOR AND IRID.)**  
 \_\_\_ 312. **N TORNADO SMALL SIZE TRI-CORNERED VASE – DK. MARI. (DARK COLOR – VERY DESIRABLE; REALLY NICE)**  
 \_\_\_ 313. **N CORN VASE WITH HUSK BASE – ICE GREEN (SCARCE; GREAT COLOR AND IRID.)**  
 \_\_\_ 314. N Corn Vase with Husk Base – White (scarce; pink highlights)  
 \_\_\_ 315. **N IVY TOWN PUMP – MARI. (RARE AND VERY DESIRABLE; NICE HIGHLIGHTS & PERFECT!)**  
 \_\_\_ 316. **N IVY TOWN PUMP – PURP. (RARE; DESIRABLE; NICE AVERAGE COLOR & IRID.)**

\_\_\_ 317. **N WISHBONE SINGLE LILY EPERGNE WITH BASKETWEAVE EXT. – PURP. (RARE AND DESIRABLE; MANUF. FLAW ON EDGE OF BOWL)**  
 \_\_\_ 318. **8" N WISHBONE FTD. 8 RUFFLED BOWL WITH RUFFLES AND RINGS EXT. – ICE BLUE (SUPER EXAMPLE; GREAT COLOR AND IRID.)**  
 \_\_\_ 319. 8 ½" N Wishbone ftd. 8 Ruffled Bowl with Ruffles and Rings Ext. – Amyth. (satiny; nice)  
 \_\_\_ 320. **N DAISY AND DRAPE FTD. FLARED VASE – AQUA OPAL. (RARE AND VERY DESIRABLE; NICE COLOR AND OPAL.)**  
 \_\_\_ 321. **N DAISY AND DRAPE FTD. FLARED VASE – DK. MARI. (SCARCE AND VERY DESIRABLE; NICE COLOR AND IRID.)**  
 \_\_\_ 322. N Daisy and Drape ftd. Turned in Vase – Dk. Mari. (scarce; another with nice color and irid.)  
 \_\_\_ 323. N Daisy and Drape ftd. Turned in Vase – White (frosty; nice and scarce)  
 \_\_\_ 324. **N GRAPE ARBOR 5 PC. TANKARD WATER SET – WHITE (FROSTY AND VERY UNDERPRICED – NICE COLOR AND IRID.)**  
 \_\_\_ 325. **8 ¼" N SUNFLOWER FTD. DEEP 8 RUFFLED BOWL WITH MEANDER EXT. – ICE BLUE (RARE AND VERY DESIRABLE; SUPER IRID.; GREAT EXAMPLE)**  
 \_\_\_ 326. 8 ½" N Sunflower ftd. Deep 8 Ruffled Bowl with Meander Ext. – Amyth. (super example)  
 \_\_\_ 327. **N PEACOCK AT THE FOUNTAIN PUNCH BOWL, BASE AND CUPS – DK. MARI. (GREAT DARK COLOR WITH EXCELLENT IRID.)**  
 \_\_\_ 328. **N PEACOCK AT THE FOUNTAIN FTD. RUFFLED FRUIT BOWL – PURP. (VERY DESIRABLE; GREAT COLOR – GREAT IRID.)**  
 \_\_\_ 329. N Fine Cut and Roses ftd. Rose Bowl with Fancy Int. – Ice Blue (scarce; nice color)  
 \_\_\_ 330. **8 5/8" N GOOD LUCK 8 RUFFLED BOWL WITH RIBBED EXT. – PASTEL AQUA OPAL. (RARE AND VERY DESIRABLE; PASTEL WITH SUPER IRID. HAS SOME TOOL MARKS ON EDGE)**  
 \_\_\_ 331. **9" N GOOD LUCK 8 RUFFLED BOWL WITH RIBBED EXT. – AQUA / TEAL (EXCELLENT EXAMPLE WITH GREAT BASE COLOR & IRID.)**  
 \_\_\_ 332. N Good Luck Bowl with P.C.E. and Basketweave Ext. – Dk. Mari. (super dark and super nice)  
 \_\_\_ 333. **9" N GOOD LUCK PLATE WITH BASKETWEAVE EXT. – GREEN (SATINY AND REALLY NICE)**  
 \_\_\_ 334. 9" N Good Luck Plate with Basketweave Ext. – Amyth. (satiny with average irid.)  
 \_\_\_ 335. **8 ¾" N ROSE SHOW 8 RUFFLED BOWL – SAPPHIRE (PROBABLY MY FAVORITE ITEM; SELDOM SOLD – SUPER COLOR)**  
 \_\_\_ 336. **8 5/8" N ROSE SHOW 8 RUFFLED BOWL – GREEN (GREAT COLOR WITH A BRIGHT GOLD IRID. – NICE)**  
 \_\_\_ 337. 8 5/8" N Rose Show 8 Ruffled Bowl – White (very scarce; frosty with really nice irid.)  
 \_\_\_ 338. 8 ¾" N Rose Show 8 Ruffled Bowl – Mari. (scarce and desirable with nice color)  
 \_\_\_ 339. **9 ¼" N ROSE SHOW FLARED PLATE – DK. MARI. (DEEP FLARE WITH GREAT COLOR AND IRID.)**  
 \_\_\_ 340. **9 ½" N ROSE SHOW FLAT PLATE – BLUE (THE BEST NON ELECTRIC BLUE EXAMPLE I'VE SEEN; SUPER MULTI-COLORED IRID.)**  
 \_\_\_ 341. 9 5/8" N Rose Show Flat Plate – odd Amyth. (scarce with goldish highlights)  
 \_\_\_ 342. **N LEAF AND BEADS FTD. ROSE BOWL – AQUA OPAL. (NICE BUTTERSCOTCH EXAMPLE)**  
 \_\_\_ 343. **N WIDE PANEL 4 LILY EPERGNE – MARI. (VERY DESIRABLE – NICE SATINY EXAMPLE)**



344.	N Singing Birds 7 pc. Water Set – Green (very scarce and very desirable set; nice)	373.	9 1/8" N Peacocks Stippled Plate with Ribbed Ext. – Dk. Mari. (nice Stippled example with bright irid.)
345.	<b>9 ¼" N POPPY SHOW FLAT PLATE – ICE BLUE (EXCELLENT EXAMPLE WITH PINKS AND BLUES; NICE)</b>	374.	<b>9" N PEACOCKS 8 RUFFLED BOWL WITH RIBBED EXT. – PURP. (SUPER, SUPER IRID.; VERY DESIRABLE ITEM)</b>
346.	<b>9 ¼" N POPPY SHOW FLARED PLATE – DK. MARI. (RARE; VERY DESIRABLE; NICE)</b>	375.	<b>9 ¾" N WILD STRAWBERRY LG. 8 RUFFLED BOWL WITH BASKETWEAVE EXT. – LIME ICE GREEN (VERY SCARCE AND VERY DESIRABLE BASE COLOR; REALLY ATTRACTIVE)</b>
347.	<b>8 7/8" N POPPY SHOW 8 RUFFLED BOWL – ELEC. BLUE (SUPER, SUPER EXAMPLE; BRIGHT BLUE FINISH; NICE)</b>	376.	9 ¼" N Strawberry Plate with Basketweave Ext. – Dk. Mari. (dark and a beaut; great color and irid.)
348.	<b>9" N POPPY SHOW 8 RUFFLED BOWL – DK. MARI. (ANOTHER REALLY NICE EXAMPLE; VERY DESIRABLE)</b>	377.	8 7/8" N Strawberry Stippled Bowl with P.C.E. and Ribbed Ext. – Blue / Elec. Blue (very desirable with Elec. Blue highlights)
349.	N Fruits and Flowers Stemmed 2 Handled Bon Bon with Basketweave Ext. – Aqua Opal. (scarce butterscotch example)	378.	<b>8 5/8" N STRAWBERRY STIPPLED BOWL WITH P.C.E. AND RIBBED EXT. – PURP. (SUPER, SUPER EXAMPLE)</b>
350.	<b>7 7/8" N FRUITS AND FLOWERS FLAT PLATE WITH BASKETWEAVE EXT. – EMERALD GREEN (ABSOLUTELY SUPER EXAMPLE WITH BRIGHT IRID.)</b>	379.	8 5/8" N Strawberry Stippled 8 Ruffled Bowl with Ribbed Ext. – Purp. (another nice example with bright irid.)
351.	7 7/8" N Fruits and Flowers 2 sided Banana Dish with Basketweave Ext. – Green (satiny finish)	380.	7 ½" N Wild Strawberry Handgrip Plate with Basketweave Ext. – Amyth. (scarce; satiny)
352.	<b>N THREE FRUITS MEDALLION STIPPLED SPATULA FTD. 8 RUFFLED BOW WITH MEANDER EXT. – AQUA OPAL. (ALWAYS DESIRABLE; HAS NICE IRID.)</b>	381.	N Eight sided Handled Bushel Basket – Ice Green (excellent example; nice)
353.	N Three Fruits Medallion spatula ftd. 8 Ruffled Bowl with Meander Ext. – Purp. (super irid.; as blue and red highlights)	382.	N Eight sided Handled Bushel Basket – Green (very scarce; nice)
354.	8 ½" N Three Fruits Stippled Bowl with P.C.E. and Ribbed Ext. – Dk. Mari. (nice dark example)	383.	N Round Handled Bushel Basket – Aqua Opal. (very scarce and very desirable)
355.	<b>8 7/8" N THREE FRUITS STIPPLED PLATE WITH RIBBED EXT. – PURP. (SUPER BRIGHT EXAMPLE – REALLY NICE)</b>	384.	N Round Handled Bushel Basket – Ice Green (really nice example)
356.	<b>9 ¼" N THREE FRUITS STIPPLED PLATE WITH RIBBED EXT. – DK. PURP. (ANOTHER EXCELLENT EXAMPLE WITH SUPER IRID.)</b>	385.	8 ¾" N Nippon Bowl with P.C.E. and Ribbed Ext. – Ice Blue (super example; nice)
357.	<b>8 ¾" N THREE FRUITS STIPPLED 8 RUFFLED BOWL WITH RIBBED EXT. – GREEN (VERY RARE BASE COLOR; NOT OFTEN SOLD)</b>	386.	9 1/8" N Nippon Plate with Basketweave Ext. – Green (chip on one point)
358.	<b>8 ½" N THREE FRUITS STIPPLED 8 RUFFLED BOWL WITH RIBBED EXT. – AQUA WITH OPAL. TIPS (DESIRABLE ITEM WITH OPAL. ON THE EDGE)</b>	387.	8 5/8" N Nippon 8 Ruffled Bowl with Basketweave Ext. – Green (satiny; average)
359.	9" N Three Fruits Plate with Basketweave Ext. – Green (satiny example; nice)	388.	N Colonial Flute 6 pc. Table Set – Mari. (complete and nice)
360.	<b>9 ¼" N THREE FRUITS PLATE WITH BASKETWEAVE EXT. – PURP. (SUPER, SUPER EXAMPLE; HAS BLUE HIGHLIGHTS)</b>	389.	Imperial Flute Toothpick Holder – Amyth. (super irid.; nice)
361.	<b>N BEADED CABLE FTD. RUFFLED ROSE BOWL – ELEC. BLUE (SUPER, SUPER EXAMPLE; BRIGHT BLUE HIGHLIGHTS)</b>	390.	U.S. Glass Big Butterfly Handled Water Pitcher – Crystal (rare pattern glass pitcher)
362.	<b>N BEADED CABLE FTD. RUFFLED ROSE BOWL – ICE BLUE (SUPER EXAMPLE WITH PINK HIGHLIGHTS)</b>	391.	Signed Ron Hansen Witches Kettle ftd. Toothpick Holder – Red (super color and irid.; a real beauty)
363.	N Beaded Cable ftd. Ruffled Rose Bowl – White (another super example; frosty and nice)	392.	Signed Ron Hansen Daisy and Button Toothpick Holder – Amyth. (another super iridized item; nice)
364.	N Beaded Cable ftd. Ruffled Rose Bowl – Aqua Opal. (nice opal. and base color)	393.	Signed Crider S Repeat Toothpick Holder – odd Amberina (odd base color; nice)
365.	<b>9" N PEACOCKS PLATE WITH RIBBED EXT. – ICE BLUE (SUPER EXAMPLE WITH A BRIGHT FINISH – NICE)</b>	394.	(Maker ?) Enameled Daisy odd Bulbous 6 Ruffled Vase – Dk. Mari. (maker ? – really odd item)
366.	<b>9" N PEACOCKS PLATE WITH RIBBED EXT. – LIME ICE GREEN (ODD BASE COLOR; TOUGH TO FIND; NICE)</b>	395.	N Peacock at the Urn Stippled Lg. I.C. Bowl – Custard (perfect; nice)
367.	9" N Peacocks Plate with Ribbed Ext. – Ice Green (scarce with a nice color and irid.)	396.	8 ½" Jefferson Gls. Comp. "Jolly Bear" 6 Ruffled Crimped Edge Bowl – Clear Opal. / Goofus (very scarce item; nice goofus decor.)
368.	9" N Peacocks Plate with Plain Ext. – White (super irid.; scarce)	397.	7" Tall N'wood Twig J.I.P. Vase – Clear Opal. (scarce item; nice opal.)
369.	8 7/8" N Peacocks Deep Plate with Ribbed Ext. – odd Soda Gold / Amyth. (odd base color; deep shape; scarce)	398.	I.G. Loganberry 6 Ruffled Top Vase – Purp. (super irid.; nice)
370.	<b>9" N PEACOCKS PLATE WITH PLAIN EXT. – GREEN (VERY SCARCE; VERY DESIRABLE; GOLDISH IRID.)</b>	399.	I.G. Loganberry 6 Ruffled Top Vase – White Carnival (super frosty and nice)
371.	9" N Peacock Plate with Ribbed Ext. – Dk. Mari. (very desirable; nice color and bright irid.)	399a.	I.G. Loganberry 6 Ruffled Top Vase – Dark Mari. (nice color)
372.	<b>9 1/8" N PEACOCKS STIPPLED PLATE WITH RIBBED EXT. – BLUE (SUPER EXAMPLE; DARK BLUE AND NICE)</b>	400.	I.G. Loganberry 6 Ruffled Top Vase – non-iridized Custard (very scarce)
		401.	I.G. Loganberry 6 Ruffled Top vase – Crystal Topaz (scarce)
		402.	10 ½" Fenton "Acanthus" Flat Chop Plate made for the I.C.G.A. – Dallas, TX 1995 – Celeste Blue Stretch (super stretch finish; nice irid.)
		403.	Fenton Blueberry Water Pitcher – Dk. Mari. (cracked)
		404.	Surprise!!!
		405.	Surprise!!!



DONALD DORAIS  
150 HIGHLAND AVENUE  
CUMBERLAND, RI 02864

# BURNS

AUCTION SERVICE



VISIT [www.necga.com](http://www.necga.com)  
Click Carnival Glass Links Page  
For pictures and brochures  
AUCTION FLEX AVAILABLE FOR  
THIS AUCTION.



Lot 300

LEE MARKLEY  
BOX 306  
MENTONE, IN 46539

Visit us at [Auctionzip.com](http://Auctionzip.com) for photos and listing. Auctioneer ID#29661

4653930306 B004



Lot 50



Lot 60



Lot 90



Lot 235



Lot 30



Lot 325

**CARNIVAL GLASS AUCTION SATURDAY, FEBRUARY 8th AT 9:30 A.M.**