

Carnival Glass 2013 AUCTION

Saturday, Nov. 16, 9:30 a.m.

Senior Activity Center
326 4th St. NE
Mason City, Iowa



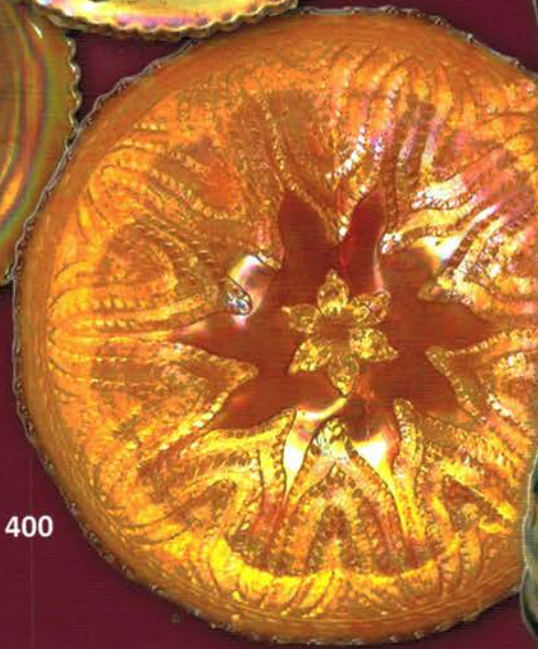
127



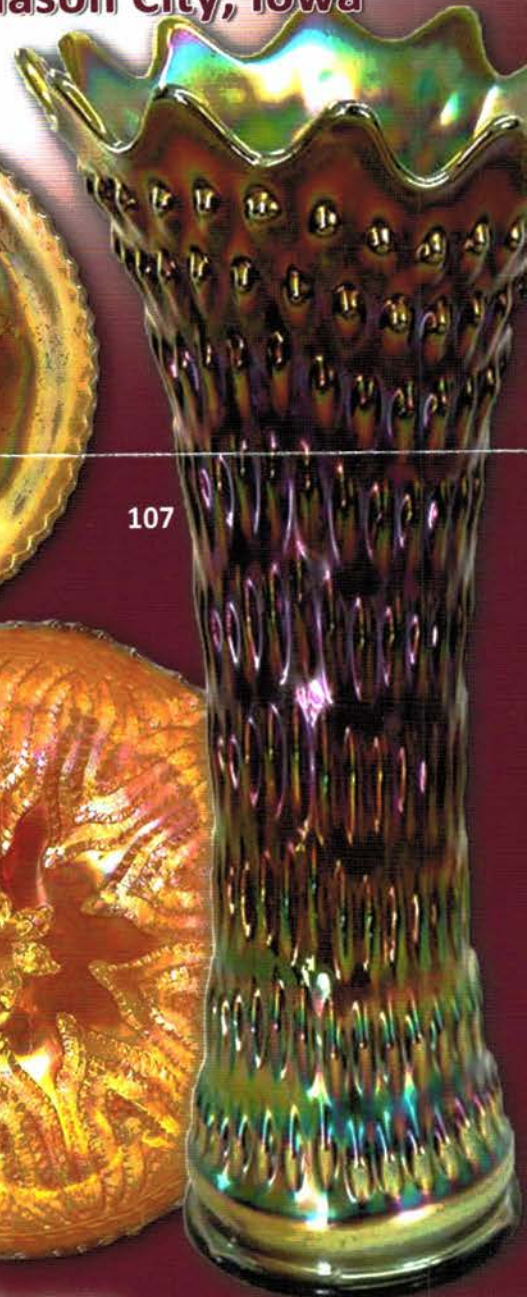
389



15



400



107



10

Jim & Jan Seeck

Seeck Auctions

641-424-1116

To view the complete auction, check our website at: www.seeckauction.com

JIM & JAN SEECK

CARNIVAL GLASS AUCTION

641-424-1116

Saturday, Nov. 16, 2013 — 9:30 AM

Preview: Friday, Nov. 15, 3 pm – 6 pm

Senior Activity Center — 326 4th St. NE — Mason City, Iowa

From South: Take US Hwy 65 into Mason City and turn right or east on 4th ST NE, go two blocks. *From North:* Take US Hwy 65 into Mason City and turn left or east on 4th ST NE, go four blocks. *This is the large brown building on the west end of the block.*

NO BUYER'S PREMIUM

ABSENTEE BIDDING is available on-line through Auction Flex using our online catalog at www.seeckauction.com

★ **Absentee bidding closes Fri., Nov. 15, at 6 p.m. CST**

Please email us and we will put you on our email mailing list for auction notices.

e-mail: jimjan@seeckauction.com

Seeck Auctions is pleased to be selling the Lois Langdon Collection of Carnival Glass from Idaho.

Lodging

Mason City: Holiday Inn Express (new) – (641)424-1200; Quality Inn – (641)423-4444; Country Inn & Suites – (641)423-1770; Super 8 – (641)423-8855; Historic Park Inn Hotel – (641)422-0015;

Clear Lake: AmericInn – (641)357-8954; Best Western Holiday Lodge (641)357-5253.

Terms: Cash or Check, VISA, MasterCard & Discover accepted w/proper ID. 4% Clerking Fee on all purchases made using credit cards. Announcements made day of sale take precedence over any printed information.

We have 3 options for absentee bidding for our *live* auctions:

- 1) If you **DO NOT** have internet access, you can: Call us by phone to enter your bids at (641)424-1116 **OR** by sending the numbers of the item(s) desired and the amount bid on each to: Seeck Auctions, PO Box 377, Mason City, Iowa 50402. We would prefer you call us with your bids rather than send them in a letter.) We will enter your bids into our online bidding system.
★ Have all written bids in by **Wed., Nov. 13.**
- 2) Enter your bids from our website into our online catalog through the Auction Flex system.
 - ◆ **First-time bidders:** Set up your account by creating a user name and password and filling out basic information. You will also need to register for the auction which will ask you to enter a valid credit card number. This card will be validated by a one time only charge of \$1 charge to your card. **You will use this user name and password for all our auctions.**
 - ◆ You are not required to pay by credit card if you are successful with your online bid. We will let you know what you owe us through an email and you can decide how you would like to pay us.
 - ◆ An exciting advantage to online bidding is that you can be notified by email if you are outbid on an item, which lets you increase your bid in time, or bid on something else. **There is a cutoff date and time, for each auction, for entering your bids online.** ★ **Online absentee bidding for this auction closes Friday, Nov. 15, at 6 p.m. CST**
 - ◆ Remember that just because you are the high bidder in the online catalog, this does not mean you have won the item. Your bid still needs to **beat** the floor bidders and live phone bidders. If your high bid lands with a floor bidder during the live auction, the floor bidder takes precedence. You might want to bid higher on a highly desired item for a better chance at winning its absentee bid.
 - ◆ If you do not receive an item that sold for less than your bid, assume we canceled your bid because the item had a severe manufacture problem, damage, or was not listed correctly.
- 3) Live phone bidding is available on pieces with an estimated sale price of \$500 or more. ★ Contact us by the **Thursday before the auction, which is Nov. 14** We will need to know the lot# and the phone number that you can be reached at on the day of the auction. We also need your home phone number if different than the above number.

Please call with questions: 641-424-1116.

If you win an online bid you will be notified by phone or e-mail between one to three days after the auction.

There is a \$7 handling charge for each successful bid, with shipping and insurance charges additional.

ONLINE BID INCREMENTS: \$1 - \$100/\$5 \$100 - \$200/\$10 \$200 - \$700/\$25 \$700 - \$1,500/\$50
\$1,500 - \$3,000/\$100 \$3,000 - \$5,000/\$250 \$5,000+ Auctioneer's Discretion

- ___ 1. Miller Furniture Basketweave Open Edge 2 sides up basket - marigold
- ___ 2. Feldman Bros. Furniture Basketweave Open Edge 2 sides up basket - marigold - nice
- ___ 3. John H. Brand Co. Furniture Basketweave Open Edge 2 sides up basket - marigold
- ___ 4. Horlacher Butterflies card tray shaped bonbon - amethyst - scarce with adv. on base
- ___ 5. Howard Furniture Four Pillars 11 1/2" vase - green - chip on top edge, scarce
- ___ 6. Little Barrel - green
- ___ 7. Little Barrel - marigold
- ___ 8. Orange Tree powder jar - blue - nice, very minor nick on inside rim of lid
- ___ 9. Orange Tree powder jar - marigold - nice
- ___ **10. Peacock Tail whimsey spittoon - blue - extremely rare whimsey made from saucer, has large chip on base but who cares, great piece!**
- ___ 11. Persian Garden 6" plate - white - has Pool of Pearls back, nice
- ___ 12. Persian Garden 6" plate - marigold
- ___ **13. Zippered Loop 7 3/4" lamp - smoke - 5 1/2" base, short & squatty, neat shape, pretty**
- ___ 14. Question Mark ftd plate - marigold - nice
- ___ **15. Utah Liquor Co. advertising 6" plate - amethyst - very rare plate, super nice**
- ___ **16. Utah Liquor Co. advertising double handgrip plate - amethyst - super pretty example!**
- ___ **17. Utah Liquor Co. advertising handgrip plate - amethyst - another nice one**
- ___ **18. Persian Medallion IC shaped saucer - red - very nice, rare saucer**
- ___ 19. Persian Medallion IC shaped saucer - aqua - rare color & nice
- ___ 20. Persian Medallion IC shaped saucer - green - another rare color, nice
- ___ **21. Stippled Three Fruits ruffled bowl w/ribbed back-sapphire - super pretty example, a beauty**
- ___ 22. Kittens 4 sides up dish - blue - scarce
- ___ 23. Kittens 4 sides up dish - marigold
- ___ 24. Kittens 4 sides up dish w/2 sets of kitties - marigold - harder to find version
- ___ **25. Fruits & Flowers bonbon - ice blue - scarce & very pretty**
- ___ 26. Fruits & Flowers bonbon - blue - pretty
- ___ 27. Fruits & Flowers bonbon - blue - irid. looks like a purple one
- ___ 28. Fruits & Flowers bonbon - purple - pretty
- ___ 29. Fruits & Flowers bonbon - marigold - chip on back edge of point.
- ___ 30. Fruits & Flowers bonbon - marigold - has pastel irid.
- ___ **31. Grape & Cable small size 8 pc. punch set w/round top - marigold - fantastic, this is a beauty!**
- ___ **32. Grape & Cable small size 8 pc. punch set - purple-nice set**
- ___ 33. Holly ruffled hatshape- marigold on moonstone - nice
- ___ 34. Holly ruffled hatshape - red - scarce
- ___ 35. Holly ruffled hatshape - aqua
- ___ **36. Vintage small size epergne - amethyst - super pretty example, couple of very small nicks on rim of base of lily**
- ___ **37. Vintage small size epergne-green-also super pretty**
- ___ 38. Four Flowers Variant 9" plate - green - scarce
- ___ 39. Grape & Cable perfume bottle - purple - scarce
- ___ **40. Good Luck ruffled bowl w/BW back - horehound-very rare color, pretty**
- ___ 41. Good Luck ruffled bowl w/BW back - green
- ___ 42. Good Luck ruffled bowl w/ribbed back - blue
- ___ 43. Good Luck ruffled bowl w/BW back - purple - nice
- ___ 44. Good Luck ruffled bowl w/ribbed back - marigold-pretty
- ___ 45. Imperial Grape 6 pc. round berry set - purple - hard to find, nice
- ___ **46. M'burg Many Stars IC shaped bowl - green - has 6 point star in center, radium, very nice and hard to find**
- ___ 47. Wishbone ftd ruffled bowl - purple - pretty
- ___ 48. Wishbone ftd ruffled bowl - marigold - nice
- ___ 49. N's Eight-sided bushel basket - green - scarce color
- ___ 50. N's Eight-sided bushel basket - amethyst - some may call this lavender
- ___ 51. N's Eight-sided bushel basket - marigold
- ___ 52. N's Eight-sided bushel basket - white - nice
- ___ **53. Stag & Holly lg size IC shaped bowl - aqua -scarce color, pretty**
- ___ 54. Stag & Holly lg size IC shaped bowl - amber - scarce color
- ___ 55. Stag & Holly lg size IC shaped bowl - light lime green base color - pretty
- ___ 56. Stag & Holly lg size IC shaped bowl - blue - pretty
- ___ **57. Tree Trunk 10" vase - sapphire - scarce color, nice**
- ___ 58. Tree Trunk 9 1/2" vase - blue - nice
- ___ 59. Tree Trunk 9 1/2" vase - purple
- ___ **60. Dugan Heavy Grape lg ruffled bowl - purple - scarce, highly desirable**
- ___ 61. Acorn deep round bowl - red - scarce, nice
- ___ 62. Acorn deep round bowl - blue
- ___ 63. Acorn deep round bowl - marigold
- ___ **64. Leaf Chain 9" plate - blue - scarce**
- ___ **65. Leaf Chain 9" plate - marigold - nice**
- ___ 66. Leaf Chain 9" plate - green - better than most
- ___ 67. Leaf Chain 9" plate - white
- ___ **68. Kittens cup & saucer - blue - saucer has 2 sets of kittens, minor pinpoint on edge, very rare**
- ___ 69. Kittens cup & saucer - marigold
- ___ 70. Persian Garden lg IC shaped bowl - white - nice
- ___ **71. Drapery rose bowl - aqua opal**
- ___ 72. Drapery rose bowl - blue - scarce color, nice
- ___ 73. Singing Birds butter dish, cvd sugar & creamer purple - minor pinpoints on edge of butter base, scarce
- ___ 74. Orange Tree ruffled fruit bowl - blue - super
- ___ 75. Orange Tree ruffled fruit bowl - marigold - super
- ___ 76. Six Petal ruffled bowl - purple - pretty
- ___ 77. Six Petal ruffled bowl - white
- ___ 78. Six Petal ruffled bowl - peach opal
- ___ **79. N's Peacock at Urn lg ruffled bowl - marigold - dark & super, made from the IC bowl, hard to find**
- ___ 80. Basketweave Open Edge ruffled basket - red
- ___ **81. Wishbone & Spades 5 pc. berry set - purple - super pretty set, hard to get**

- ___ 82. Petal & Fan crimped edge 6" plate-purple - super nice
- ___ **83. Inverted Thistle milk pitcher - green - extremely rare, one of only 3 or 4 that I know of, this one has nick on top point and minor nick on spout, a dandy milk pitcher**
- ___ 84. Freefold 10" vase - purple pretty
- ___ **85. Hearts & Flowers ruffled bowl w/ribbed back - ice green - scarce, nice**
- ___ 86. Hearts & Flowers ruffled bowl w/ribbed back - ice blue - scarce
- ___ 87. Hearts & Flowers ruffled bowl w/ribbed back - purple - scarce, nice
- ___ 88. Persian Medallion rose bowl - marigold - dark, dark, dark, pumpkin & super!
- ___ **89. Apple Blossom Twigs low ruffled bowl - purple - super**
- ___ 90. Apple Blossom Twigs low ruffled bowl - white - pretty
- ___ 91. Apple Blossom Twigs low ruffled bowl - marigold - nice
- ___ **92. Gevurtz Bros ruffled advertising bowl - amethyst-small chips on a few points, scarce**
- ___ 93. Grape & Cable sweetmeat - purple
- ___ 94. Blackberry Spray ruffled hatshape - red - super red irid.
- ___ **95. Fruit Salad punch bowl, base & 1 cup - marigold - scarce set**
- ___ **96. M'burg Peacock at Urn lg IC shaped bowl - green - satin, scarce, nice**
- ___ 97. M'burg Peacock at Urn lg IC shaped bowl - amethyst-satin, scarce
- ___ 98. Grape & Cable candlesticks - green - very pretty set
- ___ **99. Greek Key ruffled bowl w/BW back - purple - super pretty**
- ___ 100. Carolina Dogwood ruffled bowl - blue opal - scarce, nice
- ___ 101. Carolina Dogwood ruffled bowl - marigold on milk glass
- ___ **102. Peacocks 9" plate w/ribbed back - purple - scarce, nice**
- ___ **103. Peacocks 9" plate w/ribbed back - lime green - scarce color, nice**
- ___ 104. Peacocks 9" plate w/ribbed back - ice green - nice
- ___ 105. Peacocks 9" plate w/ribbed back - white - nice
- ___ **106. Leaf & Beads rose bowl w/beaded top-amethyst-scarce variation**
- ___ **107. Rustic 18" funeral vase w/plunger base - green - super petty example & rare**
- ___ 108. Kittens cereal bowl w/2 sets if kittens-marigold-nice
- ___ 109. Kittens cereal bowl - marigold
- ___ 110. Orange Tree round shaped punch bowl & base - marigold - nice
- ___ **111. Lattice & Poinsettia ftd ruffled bowl - purple - scarce**
- ___ 112. M'burg Peacock IC shaped sauce - amethyst - satin, nice
- ___ 113. M'burg Peacock IC shaped sauce - marigold - satin, scarce color
- ___ 114. Victorian lg ruffled bowl - purple - nice for these
- ___ **115. Votive Light - marigold - dark, nice, rare novelty**
- ___ **116. Rose Show 9" plate - emerald green - very rare plate & highly desirable, nice**
- ___ 117. Rose Show 9" plate - white
- ___ 118. Singing Birds 4 pc. berry set - green - scarce
- ___ **119. Vintage 7" deep round bowl w/knob in center of bowl - blue - not sure why this is there, molded in the bowl, maybe an attempt at an epergne? Have not seen another.**
- ___ **120. Wishbone epergne - purple - super nice, scarce**
- ___ **121. Wishbone epergne - marigold - also nice**
- ___ 122. Fisherman's mug - purple - super nice example
- ___ 123. Fenton's Peacock at Urn 6 ruffled bowl - blue
- ___ 124. Fenton's Peacock at Urn 6 ruffled bowl - white
- ___ 125. Fenton's Peacock at Urn 8 ruffled bowl - marigold
- ___ 126. Dugan Cherries round bowl - purple - nice, fruit is slightly rubbed
- ___ **127. M'burg Wild Rose sewing lamp - marigold - 10" tall, 6 3/4" base, super nice, rare**
- ___ 128. Kittens 2 sides up dish - marigold - nice
- ___ 129. Thistle banana boat - amethyst - nice
- ___ 130. Two Flowers lg size ftd ruffled bowl - aqua - scarce color
- ___ 131. Two Flowers lg size ftd ruffled bowl - lime green - nice, scarce color
- ___ 132. Circle Scroll tri-cornered hatshape - purple - scarce, nice
- ___ **133. Singing Birds 7 pc. water set - purple - scarce**
- ___ 134. Singing Birds 7 pc. water set - green - fabulous set, even tumblers are super, there is a burst in the base of pitcher, but what a set!
- ___ 135. Stippled Rays 6" IC shaped bowl - red - amberina base
- ___ 136. Wreathed Cherry cvd sugar, spooner & creamer - purple - nice
- ___ 137. Heavy Grape 8" plate - purple - pretty
- ___ 138. Grape & Cable banana boat - purple - scarce
- ___ 139. Grape & Cable banana boat - marigold - nice
- ___ **140. Australian Swan ruffled sauce - purple**
- ___ 141. Nippon PCE bowl w/ribbed back - purple - scarce
- ___ 142. Nippon PCE bowl w/ribbed back - ice blue - nice
- ___ **143. Stippled Rays sugar bowl whimsey - red - scarce, nice**
- ___ **144. Fenton Peacock at Urn 9" plate - blue - scarce, nice**
- ___ **145. Fenton Peacock at Urn 9" plate - white**
- ___ 146. Fenton Peacock at Urn 9" plate - marigold - nice
- ___ 147. Lions deep round bowl - powder blue - scarce color
- ___ 148. Lions deep round bowl - marigold - nice
- ___ **149. Acorn Burrs 8 pc. punch set - green - super nice set, one cup has nick**
- ___ 150. Orange Tree loving cup - marigold
- ___ **151. M'burg Trout & Fly ruffled bowl - marigold - satin, nice**
- ___ **152. Octagon cordial - marigold - so cute and very hard to find**
- ___ 153. Smooth Rays lg ruffled bowl - purple - has Jeweled Heart back, nice
- ___ 154. Orange Tree hatpin holder - marigold - dark, nice
- ___ **155. Dreibus Parfait Sweets 6" advertising plate - amethyst - pretty red irid.**
- ___ 156. Beaded Cable rose bowl - aqua opal - nice
- ___ **157. Poppy Show ruffled bowl - marigold - scarce, nice**

- ___ 158. Persian Medallion chop plate - blue - silvery, scarce
- ___ **159. Aladdin kerosene lamp - marigold over milk glass - cannot remember selling another one of these, must be quite rare, has "A" mark on bottom**
- ___ 160. Nippon ruffled bowl w/BW back - green - nice
- ___ 161. Nippon ruffled bowl w/BW back - marigold - nice
- ___ **162. M'burg Hobnail tumbler - blue - extremely rare tumbler, very minor pinpoint on edge of base**
- ___ 163. Dragon & Lotus IC shaped bowl - red - rare & desirable
- ___ 164. Fine Cut & Roses rose bowl - ice blue
- ___ 165. Fine Cut & Roses rose bowl - green
- ___ 166. Fine Cut & Roses rose bowl - purple
- ___ **167. Many Fruits punch bowl, base & 1 cup - marigold - nice**
- ___ 168. Rose Show ruffled bowl - white - scarce
- ___ **169. Stippled Three Fruits Medallion spt ftd ruffled bowl - aqua opal - scarce, has nice opal**
- ___ 170. Three Fruits Medallion spt ftd ruffled bowl - purple
- ___ 171. Three Fruits Medallion spt ftd ruffled bowl - marigold
- ___ 172. Smooth Rays crimped edge 6" plate - purple - has Jeweled Heart back, scarce
- ___ 173. Grape & Cable 4 pc. ice cream set - white - nice
- ___ 174. Grape & Cable master IC bowl - marigold
- ___ 175. M'burg Nesting Swan ruffled bowl - amethyst - radium
- ___ 176. Leaf Chain 7" ruffled bowl - white - frosty, nice
- ___ **177. M'burg Strawberry Wreath diamond shaped crimped edge bowl - green - radium, nice, rare shape**
- ___ **178. Moonprint 5 pc. juice set - marigold - this is a variation of Moonprint, there is not a cross between the prints, rare set**
- ___ **179. Grape & Cable dresser tray - purple - nice**
- ___ 180. Stag & Holly giant rose bowl - marigold - pretty
- ___ **181. Flute 6 pc. berry set - purple - super pretty set**
- ___ **182. Orange Tree punch bowl & 4 cups - white - who has an extra base?**
- ___ 183. Orange Tree 8 pc. punch set - marigold - dark, pretty
- ___ **184. M'burg Multi Fruits & Flowers sherbet-amethyst-rare & hard to find**
- ___ 185. Daisy & Drape turned in vase - marigold - scarce
- ___ 186. Daisy & Drape turned in vase - white
- ___ **187. Hattie chop plate - marigold - very scarce, pretty**
- ___ 188. Stippled Rays 7" ruffled bowl - red - scarce
- ___ 189. N's Thin Rib 13" mid-size vase - purple - scarce
- ___ 190. Apple Blossom Twigs 9" plate w/smooth edge - peach opal - nice
- ___ 191. Grape & Cable 4 pc. berry set - green - scarce color
- ___ 192. Grape & Cable 7 pc. berry set - purple
- ___ 193. Blackberry Spray JIP CRE hatshape - reverse amberina - scarce, nice
- ___ 194. Blackberry Spray JIP CRE hatshape - marigold
- ___ 195. Four Flowers Variant ruffled bowl - green - 1" crack in interior of plate
- ___ 196. Four Flowers Variant ruffled bowl - amber - scarce color
- ___ 197. Inverted Strawberry powder jar - green - scarce, highly desirable, silvery
- ___ **198. Grape & Cable Variant 9" plate w/BW back - olive green - has very pretty irid., unusual color**
- ___ 199. Grape & Cable Variant 9" plate w/plain back - purple
- ___ **200. Eat Paradise Sodas 6" advertising plate - amethyst - scarce, nice**
- ___ 201. Peacocks PCE bowl w/ribbed back - marigold - nice
- ___ **202. Wreath of Roses round shaped 6 pc. punch set - green - has Persian Medallion interior, super pretty**
- ___ 203. Leaf & Beads rose bowl - aqua opal - nice
- ___ 204. Leaf & Beads rose bowl - purple - very pretty
- ___ 205. Leaf & Beads rose bowl - blue
- ___ **206. N's Peacock at Urn chop plate - purple - very rare & highly desirable, nice**
- ___ 207. Australian Magpie ruffled sauce - marigold - nice
- ___ **208. Embroidered Mums ruffled bowl w/ribbed back-purple - nice**
- ___ **209. Embroidered Mums ruffled bowl w/ribbed back-marigold - nice**
- ___ 210. Dugan Cherries ftd ruffled bowl - purple - pretty
- ___ 211. Holly 9" plate - white - nice
- ___ 212. Holly 9" plate - blue
- ___ 213. Holly 9" plate - marigold
- ___ **214.1910 Detroit Elks ruffled bowl - green - rare & desirable**
- ___ **215. Oriental Poppy 7 pc. water set - purple - always in demand**
- ___ 216. Cosmos & Cane 6 pc. berry set- honey amber- neat set
- ___ 217. Cosmos & Cane master berry bowl - white - has light sun color
- ___ **218. Acorn 7" ruffled bowl - red - scarce, nice**
- ___ 219. Acorn 7" ruffled bowl - aqua - nice
- ___ 220. Acorn 7" ruffled bowl - marigold
- ___ **221. N's Corn vase w/plain base - purple - scarce & desirable**
- ___ **222. N's Corn vase w/stalk base - ice green - has marigold overlay - scarce, nice**
- ___ **223. N's Corn vase w/stalk base - lime green - scarce color**
- ___ 224. N's Corn vase w/stalk base - ice green
- ___ 225. N's Corn vase w/plain base - white
- ___ 226. Fruits & Flowers 7 pc. ruffled berry set - purple - scarce set
- ___ 227. Stippled & Banded Grape & Cable cologne bottle - marigold - very scarce in this version
- ___ 228. Australian Kookaburra lg ruffled bowl - purple
- ___ 229. Australian Kookaburra lg ruffled bowl - marigold
- ___ **230. Fenton's Flowers rose bowl w/smooth top - blue-rare variation**
- ___ **231. Persian Medallion bonbon - red - scarce, nice**
- ___ 232. Stag & Holly lg size ftd ruffled bowl - amethyst - scarce color, silvery
- ___ 233. Corinth 9" JIP vase - blue opal - scarce
- ___ 234. Good Luck PCE bowl w/BW back - marigold
- ___ **235. Imperial Grape wine bottle - smoke - scarce color, nice**
- ___ 236. Stippled Three Fruits 9" plate w/ribbed back- purple
- ___ 237. Stippled Three Fruits 9" plate w/ribbed back - marigold
- ___ **238. Memphis fruit bowl, base & 1 cup - purple - scarce, highly desirable, nice**
- ___ 239. Harvest Poppy ruffled compote - pastel marigold - lots of pink, yellow & blue

- ___ 240. Circle Scroll whimsey 8" vase - purple - scarce
- ___ 241. Peacock at the Fountain master berry bowl - ice blue - rare & highly desirable, nice
- ___ 242. Peacock & Grape ruffled bowl - green - has super irid.
- ___ 243. Peacock & Grape ruffled bowl - powder blue - pretty
- ___ 244. M'burg Tulip Scroll 7" vase - amethyst - scarce
- ___ 245. Grape & Cable 7" deep round bowl - red - scarce
- ___ 246. Grape & Cable 7 pc. water set - purple - pitcher is nice
- ___ 247. Pansy low ruffled bowl - lavender - super pretty
- ___ 248. Pansy ruffled bowl - marigold - nice
- ___ 249. Grape & Cable fernery - purple - very scarce & highly desirable
- ___ 250. Kittens ruffled dish - marigold
- ___ 251. Imperial Grape lg ruffled bowl - purple - nice
- ___ 252. N's Bushel basket - ice green
- ___ 253. N's Bushel basket - lavender
- ___ 254. N's Bushel basket - blue
- ___ 255. N's Bushel basket - purple
- ___ 256. N's Bushel basket - marigold
- ___ 257. M'burg Hobnail Swirl spittoon - marigold - super nice & very scarce
- ___ 258. Dogwood Sprays deep ruffled dome ftd bowl - purple - pretty
- ___ 259. Grape & Cable turned up centerpiece bowl - white - nice, scarce
- ___ 260. Blackberry Spray square shaped hatshape - red - scarce shape
- ___ 261. Stippled Strawberry PCE bowl w/ribbed back - marigold - scarce
- ___ 262. Dugan Cherries ruffled bowl - purple - nice
- ___ 263. Morning Glory 19" funeral vase - marigold - scarce, nice
- ___ 264. Fanciful 9" plate - blue
- ___ 265. Beaded Bullseye 12" vase - purple - pretty
- ___ 266. Beaded Bullseye 11" vase - amber - nice
- ___ 267. Beaded Bullseye 8" squatty vase - marigold - has 7" mouth
- ___ 268. Raspberry ftd ruffled candy dish - white - scarce color, nice
- ___ 269. Raspberry ftd ruffled candy dish - purple
- ___ 270. Peacock at the Fountain butter dish, cvd sugar and spooner - marigold - all nice
- ___ 271. Diamond Lace 3 pc. ruffled berry set - purple - pretty
- ___ 272. Peacock at the Fountain punch bowl, base & 1 cup - marigold - very scarce, nice
- ___ 273. Concord ruffled bowl - blue - scarce
- ___ 274. Concord ruffled bowl - marigold - nice
- ___ 275. Grape & Cable hatpin holder - purple
- ___ 276. Orange Tree deep round bowl - vaseline - has marigold overlay, scarce color
- ___ 277. Peacocks ruffled bowl w/ribbed back - purple - scarce
- ___ 278. Chrysanthemum lg size ftd IC shaped bowl - marigold - lots of pink & yellow
- ___ 279. Spiralex 11" vase - purple - fantastic
- ___ 280. Zippered Loop 9" kerosene lamp - marigold - has 5 1/8" base, nice
- ___ 281. Australian Kangaroo ruffled sauce - purple
- ___ 282. Persian Garden ruffled fruit bowl top - white - super pretty, if you have a base, you'll have a great set
- ___ 283. Isaac Benesch & Sons advertising ruffled bowl - amethyst - scarce
- ___ 284. Corn bottle - marigold
- ___ 285. Fanciful low ruffled bowl - peach opal - nice
- ___ 286. Stork & Rushes 7 pc. water set - marigold - very pretty for these
- ___ 287. Sterling Furniture Co. advertising ruffled bowl - amethyst - very scarce piece, nice
- ___ 288. Little Fishes ftd ruffled master berry bowl-marigold-dark, pretty
- ___ 289. Fenton's Peacock at Urn IC shaped bowl - amethyst - silvery
- ___ 290. Concave Flute 8 1/2" vase - marigold - neat looking vase
- ___ 291. Grape & Cable small size fruit bowl - blue - scarce color
- ___ 292. Stippled Three Fruits PCE bowl w/ribbed back - marigold - nice
- ___ 293. Amaryllis dome ftd plate - purple - scarce
- ___ 294. Peacock Tail 6" plate - marigold - scarce
- ___ 295. Diamond Lace water pitcher - purple - pretty
- ___ 296. Grape & Cable powder jar - marigold - nice
- ___ 297. Inverted Strawberry 10" ruffled bowl - green
- ___ 298. Tulip & Cane hdd nappy - marigold - don't think I have ever sold another
- ___ 299. Holly ruffled bowl - red - slight roughness on rim, scarce
- ___ 300. Holly ruffled bowl - black amethyst - cannot get light through it, has blue irid.
- ___ 301. Wishbone & Spades 6" plate-purple-scarce, nice
- ___ 302. Australian Kookaburra ruffled sauce- marigold- nice
- ___ 303. N's Peacock at Urn master IC bowl - ice green - scarce, pretty
- ___ 304. N's Peacock at Urn master IC bowl - white - scarce, nice
- ___ 305. Lacy Dewdrop cvd compote- marigold on milk glass- scarce
- ___ 306. Scroll Embossed ruffled bowl w/plain back- purple- super
- ___ 307. Three Row Open Edge Basketweave IC shaped bowl - ice green - scarce & nice
- ___ 308. Circle Scroll JIP hatshape - purple - hard to find
- ___ 309. M'burg Hanging Cherries lg size IC shaped bowl - marigold - satin
- ___ 310. Grape & Cable hdd pin dish - purple - made from punch cup
- ___ 311. Geo. W. Getts Pianos advertising handgrip plate - amethyst - very hard to find, nice
- ___ 312. Triplets Variant - marigold - has a stippled pattern around the flowers, the base is also different, have not seen this before, very nice irid.
- ___ 313. Blackberry Spray 2 sides up hatshape - red - scarce, nice
- ___ 314. Peacock & Grape 9" plate - marigold - scarce
- ___ 315. Banded Grape & Cable cologne bottle - purple - scarce
- ___ 316. Apple Blossom Twigs w/smooth edge low ruffled bowl - peach opal - nice
- ___ 317. Persian Medallion 9" plate - blue - scarce
- ___ 318. Tree Trunk 13" mid-size vase - ice green - very scarce & nice

- ___ 319. Garden Path Variant 6" plate - white - scarce, nice
- ___ 320. Stippled Rays hdd sugar bowl - red - nice example
- ___ 321. Diamond Point 9 1/2" vase - ice blue - scarce, nice, has a smokey tint
- ___ 322. Apple Blossom Twigs IC shaped bowl - white - pretty
- ___ **323. Wreath of Roses 8 pc. punch set - marigold - has Vintage interior, scarce, nice**
- ___ 324. Grape & Cable shot glass - purple - silvery
- ___ **325. Shell 9" plate - smoke - super pretty, scarce plate**
- ___ **326. Enameled Castle scene lg lamp shade w/3 small shades - super matching set, almost impossible to find**
- ___ 327. Smooth Panels 8" vase - marigold on moonstone - 3 1/2" base, nice
- ___ 328. Two Flowers ftd ruffled bowl - powder blue - nice
- ___ 329. Heavy Grape master berry bowl - purple - fantastic
- ___ 330. M'burg Hanging Cherries ruffled sauce - marigold - satin, nice
- ___ **331. Dogwood Sprays dome ftd ruffled bowl - blue-yes, blue, very rare color, couple small nicks on base, typical**
- ___ 332. Strawberry ruffled bowl w/plain back - green - fantastic, chip on one strawberry
- ___ 333. Strawberry ruffled bowl w/plain back - marigold - pretty
- ___ 334. N's Peacock at Urn IC sauce - blue - nice
- ___ 335. N's Peacock at Urn IC sauce - purple
- ___ 336. N's Peacock at Urn IC sauce - white
- ___ 337. M'burg Primrose ruffled bowl - marigold - satin, very pretty
- ___ 338. Grape & Cable 9" plate w/plain back - purple - pretty
- ___ 339. Grape & Cable 9" plate w/BW back - marigold - very nice
- ___ 340. Heavy Grape hdd nappy - purple - super pretty
- ___ 341. Butterfly & Berry 4 piece table set - marigold - nice
- ___ 342. Orange Tree w/trunk ruffled bowl - white - pretty
- ___ 343. Orange Tree ruffled bowl - blue - pretty
- ___ 344. Blossomtime ruffled compote - green
- ___ 345. Persian Medallion 10" ruffled bowl - amethyst
- ___ 346. Golden Harvest 5 pc. wine set - amethyst
- ___ 347. Golden Harvest wine bottle & 1 wine - marigold
- ___ 348. Scroll Embossed ruffled sauce - purple - has File back, super
- ___ **349. Stag & Holly chop plate - marigold - dark, pretty, scarce**
- ___ 350. Waffle Block punch bowl top - teal
- ___ 351. Waffle Block 7 pc. punch set - marigold
- ___ 352. Flowers & Frames dome ftd ruffled bowl - purple - nice
- ___ 353. Imperial Grape 7 pc. wine set - marigold - nice
- ___ 354. Strawberry 9" plate w/BW back - green - pretty
- ___ 355. Strawberry 9" plate w/BW back - purple - pretty
- ___ 356. M'burg Grape Wreath Variant 8" ruffled bowl - marigold - radium, nice
- ___ 357. Pony ruffled bowl - amethyst - nice
- ___ 358. Pinecone sauce shaped 6" plate - marigold - nice
- ___ 359. Double Stemmed Rose dome ftd ruffled bowl - blue - rare color, chip on base
- ___ 360. Double Stemmed Rose dome ftd ruffled bowl - white
- ___ 361. Grape & Cable breakfast set - green - nice
- ___ 362. Horse Medallion ftd ruffled bowl - blue
- ___ 363. Horse Medallion ftd ruffled bowl - marigold - nice
- ___ **364. M'burg Seaweed 9" IC shaped bowl - green - satin, rare, a great piece of glass**
- ___ 365. Fanciful ruffled bowl - marigold
- ___ 366. Holly 3 in 1 edge bowl - green - nice
- ___ 367. Imperial Grape 7 pc. water set - marigold
- ___ 368. Grape & Cable Variant ruffled bowl w/plain back - purple - pretty, has stretchy irid.
- ___ 369. Grape & Cable bonbon - white - scarce color
- ___ 370. Round Up 3 in 1 edge bowl - blue - has radium type irid.
- ___ 371. Luster Rose 4 pc. table set - marigold
- ___ 372. M'burg Grape Wreath Variant 8" IC shaped bowl - green - radium, super
- ___ 373. Panther round sauce - powder blue - scarce color
- ___ 374. Round Up 9" plate - blue
- ___ 375. Stork & Rushes punch bowl top & 6 cups - marigold - very scarce
- ___ 376. Fruits & Flowers 2 sides up 7" plate - purple
- ___ 377. Pinecone 6" plate - amethyst
- ___ 378. Pinecone 6" plate - marigold
- ___ **379. Wreath of Roses punch bowl & base - amethyst - has Persian Medallion interior, very scarce & pretty**
- ___ 380. Grape & Cable 6" handgrip plate - amethyst
- ___ 381. Ripple 16" vase - amber - has 3 15/16" base, pretty
- ___ 382. Orange Tree 9" plate - white - silvery
- ___ 383. Orange Tree w/trunk 9" plate - marigold - may call it clambroth
- ___ 384. Ski Star ruffled sauce - purple
- ___ 385. Strawberry PCE bowl w/plain back - purple
- ___ 386. Poppy pickle dish - blue
- ___ 387. Grapevine Lattice 6" ruffled bowl - white
- ___ 388. Grape Delight rose bowl - white
- ___ **389. Ogden Furniture advertising 6" plate - amethyst-rare plate & nice**
- ___ 390. Dugan Cherries crimped edge round sauce - purple - has some lime deposits
- ___ 391. Sunflower spt ftd ruffled bowl - purple
- ___ 392. Diamond & Sunburst 7 pc. wine set - marigold - 1 wine has nick
- ___ 393. Waterlily ftd ruffled sauce - green - pretty
- ___ 394. Palm Beach 9" berry bowl - honey amber - scarce
- ___ 395. Captive Rose 9" plate - blue
- ___ 396. Petal & Fan deep round sauce - white - scarce, neat & pretty
- ___ 397. Ten Mums ruffled bowl - blue
- ___ 398. Wreathed Cherry banana boat shaped berry bowl - white w/gold Cherries
- ___ 399. Cosmos & Cane ruffled bowl - sun colored white - nice
- ___ **400. Dragon's Tongue IC shaped footed bowl - marigold - fantastic bowl, super pretty & rare in the IC shape**
- ___ 401. Box lot of Misc.

At end of auction, we will have several box lots of glass, some with damage.

Seeck Auctions
 PO Box 377
 Mason City, Iowa
 50402

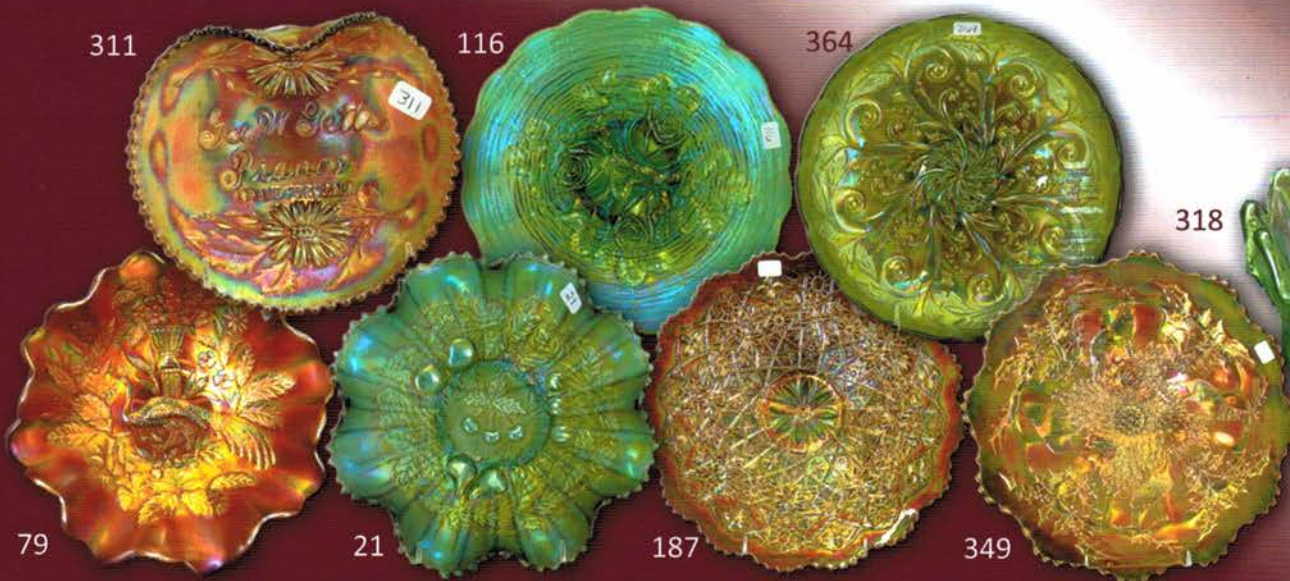
Presorted
 First Class Mail
 U.S. Postage
 Paid
 Mail Expeditors



287

Carnival Glass
 2013 Auction
 Sat. Nov. 16, 9:30 a.m.
 Senior Activity Center
 326 4th St. NE
 Mason, City, Iowa

T4 P1 192
 LEE MARKLEY
 BOX 306
 MENTONE IN 46539-0306



31



149



83