

# Customer Appreciation Weekend 2013

*This year we will having our Customer Appreciation Weekend*

*Saturday, October 26th 2013*

*Held in our Greenville Ohio Auction Facility*

We have 2 Auctions for you on October 26th 2013. Over 400 pieces of Quality Carnival Glass and over 500 pieces of SUPER Stretch Glass. We are pleased to have been asked to auction both collections, but especially The Pierce carnival glass collection. Ed and Betty were one of the most enjoyable couples we have ever met in Carnival. We are really blessed to have known Ed. Betty has been a real trooper through this and she also is such a wonderful lady.

We are having this auction a bit early this year because unbeknown to us, Ed's 80th Birthday is October 25th. So I spoke with Betty, thought we would have a little party, so we moved everything up..SO.. here's what we have for you, our fantastic friends & customers.

**Saturday, starting at 7:45 AM The Fairlawn Steakhouse will be serving a hot breakfast for you. At 11:30, Fairlawn will be serving you a nice lunch, and then keeping a very nice hospitality area refreshed for you the rest of the day with our compliments to you for all of your support through-out the year(s). Our way of saying THANK YOU! Also notice we have negotiated a great price PLUS a coupon for the Holiday Inn Express ( see below).**

**We love our profession, and appreciate each and every one of you, buyers and sellers!**

#### \*\*\*\*\*Mail, E-Mail, Phone and Absentee Bids Policy:\*\*\*\*\*

Absentee Bidding: Absentee bidding is available via our "Auction Flex" bidding system. You may also email us, or mail your absentee bids. You can also do "live phone" bids. Just give us a call at 937.548.7835 or 716.526.4230 to set up your item schedule. Remember, call early as we have 2 lines available per item. There is a \$7.00, per successful bid, convenience fee. Items will be shipped within 5 days after payment is received. We reserve the right to cancel ANY bid for ANY reason. We will cancel all bids on an item if damage is found during the auction. If you do not hear from us by Tuesday following week, you did not win.

**Terms & Conditions:** Cash, Travelers checks, business or personal checks w/I.D. Visa/ MC & Discover with a 3% clerking fee.

*We reserve the right to withdraw any damaged item from the auction before the bidding starts.*

## Jim Wroda Auctions

2118 Magnolia Ave, Ashville, NY 14710  
5239 ST RT 49 S. Greenville, Ohio 45331

716.526.4239 NY office  
937.548.7835 OH Office

Email us: [office@jimwrodaauction.com](mailto:office@jimwrodaauction.com)

**Visit our website site for full weekend coverage at**  
**[www.jimwrodaauction.com](http://www.jimwrodaauction.com)**

Holiday Inn Express  
Greenville Ohio  
Good For October 25th and 26th  
2013 ONLY

**\$20.00 OFF**  
**per night**

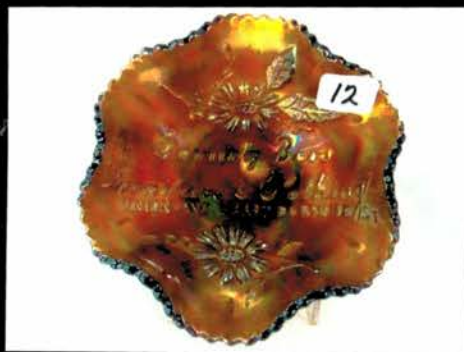
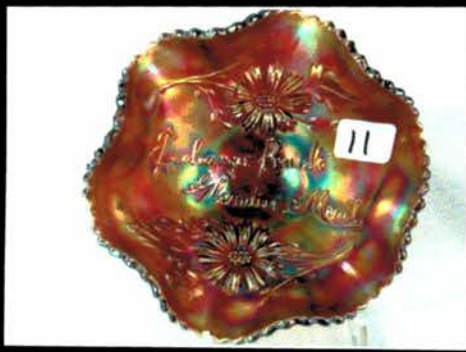
You MUST bring coupon with you!  
937.548.1328

*Happy Birthday Ed!! This can of*  
*Pennsylvania Dutch Birch Beer is for you!!*



We HIGHLY recommend the Holiday Inn for this weekend as we have received a room rate of \$87.99 per night PLUS an additional \$20.00 PER NIGHT OFF COUPON!

937.548.1328



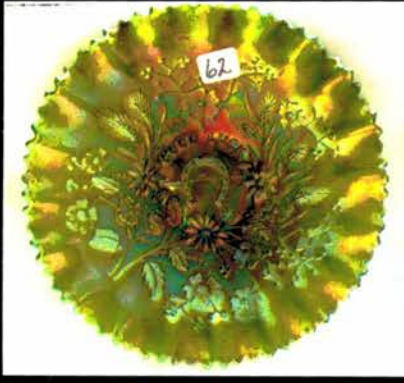
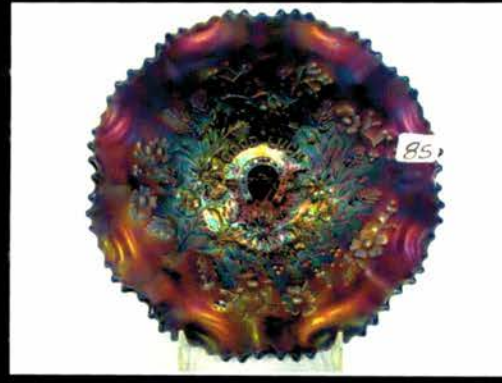
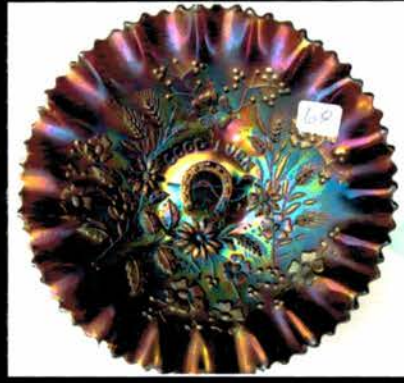
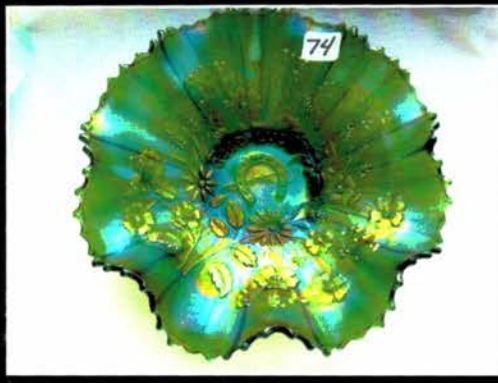
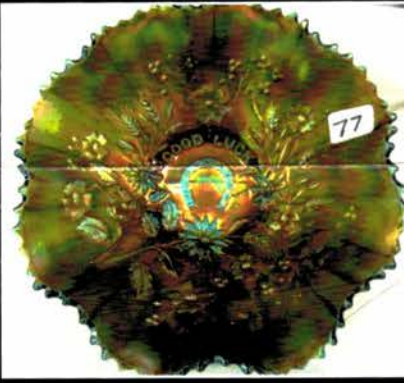
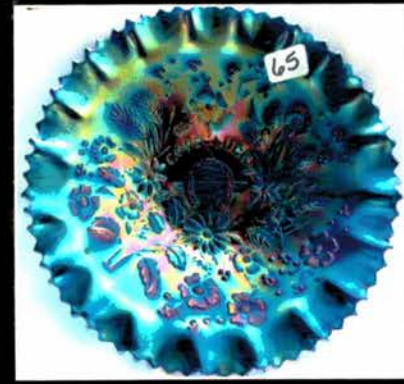
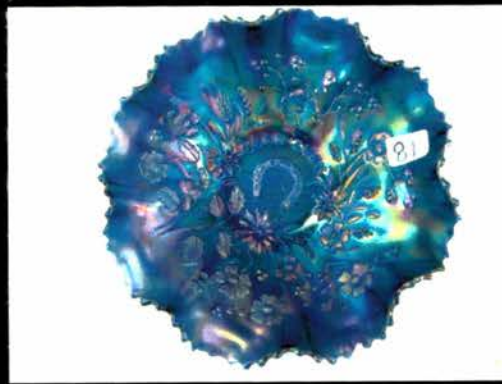
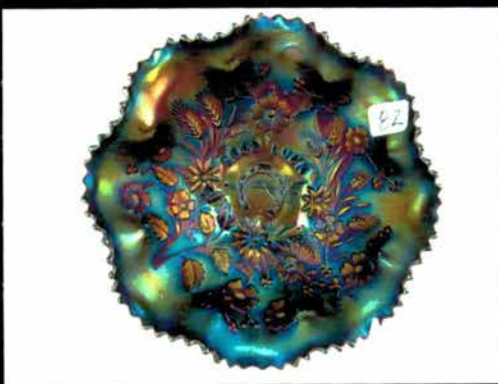
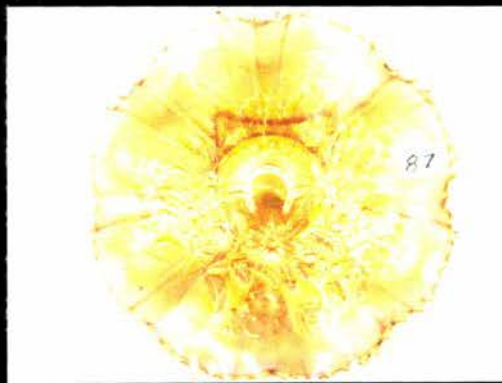
Lot 89> THE FINEST DARK PUMPKIN MARIGOLD AS YOU WILL EVER SEE IN THIS PLATE!! OUTSTANDING PLATE! We sold a plate similar in Florida for well over 20K! have at it!

## October 26, 2013 Carnival (9:30 am) & Stretch Glass (10:00 am) Listings

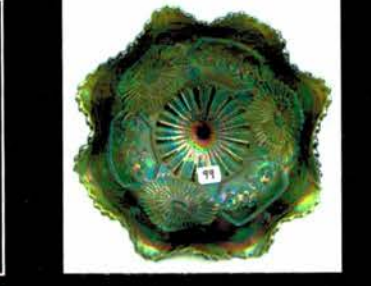
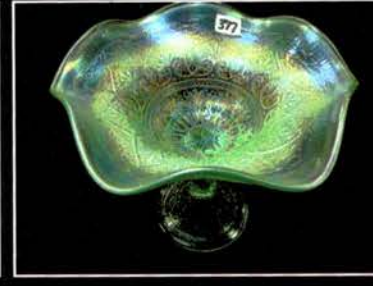
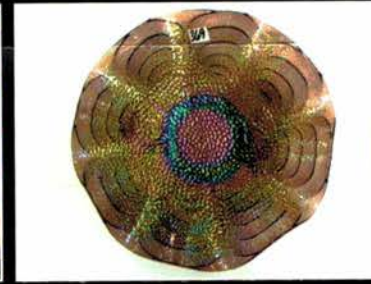
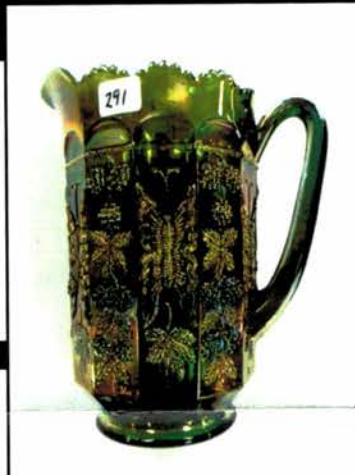
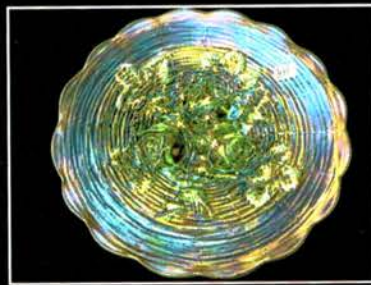
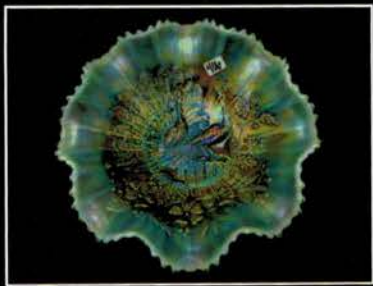
- |    |  |     |   |
|----|--|-----|---|
| 1  | Imp dark mari Novelty Barrel- Compliments of the season sticker, Marysville, CA.   | 54  | Nwood 9" purple Good Luck stippled plate- RARE  |
| 2  | Dugan mari Daisy Web ruffled hat   | 55  | Nwood 9" Good Luck stippled plate- Scarce   |
| 3  | Nwood purple 3 fruits dome ft'd bowl   | 56  | Nwood 9" mari Good Luck plate. Nice   |
| 4  | Nwood purple Star of David & Bows bowl   | 57  | Nwood 9" elec purple Good Luck plate w/BW back  |
| 5  | Fenton Flowers rose bowl- Black Amy  | 58  | Nwood 9" purple Good Luck plate w/ BW back  |
| 6  | New Orleans Shriners loving cup  | 59  | Nwood 9" mari Good Luck plate w/ BW back  |
| 7  | Rochester NY Shriners loving cup   | 60  | Nwood 9" mari Good Luck plate w/ BW back  |
| 8  | Fenton 8" blue Orange Tree ICS bowl  | 61  | Nwood 9" mari Good Luck plate w/ BW back  |
| 9  | Nwood purple G&C ruffled hat   | 62  | Nwood 9" green Good Luck PCE bowl w/ BW back Scarce   |
| 10 | Nwood mari G&C hatpin holder   | 63  | Nwood 9" green Good Luck PCE bowl w/ rib back   |
| 11 | Exchange Bank purple ruffled bowl  | 64  | Nwood 9" elec purple Good Luck bowl w/ rib back   |
| 12 | Gervitz Bros. purple Ruffled bowl  | 65  | Nwood 9" elec blue Good Luck bowl w/ rib back BRIGHT!!  |
| 13 | Geo. w. Getts Pianos purple plate  | 66  | Nwood 9" mari Good Luck bowl w/BW back  |
| 14 | Ogden Furniture purple ruffled bowl  | 67  | Nwood 9" green Good Luck bowl w/BW back   |
| 15 | Sterling Furniture purple deep round bowl  | 68  | Nwood 9" purple Good Luck bowl w/BW back  |
| 16 | Utah Liquor purple Hand grip plate   | 69  | Nwood 9" green Good Luck bowl w/rib back  |
| 17 | Compliments of the Central Shoe company flat plate-purple  | 70  | Nwood 9" mari Good Luck bowl w/BW back  |
| 18 | Braziers Candies flat plate- purple  | 71  | Nwood 9" green Good Luck bowl w/BW back   |
| 19 | Garden Mums purple ruffled bowl  | 72  | Nwood 8.5" pastel AO Good Luck ruffled bowl. RARE!  |
| 20 | Mari Kittens ruffled toothpick and bowl  | 73  | Nwood 8.5" sapphire Good Luck ruffled bowl. RARE!   |
| 21 | Nwood 5" purple Fruits and Flowers bowl  | 74  | Nwood 8.5" EM GREEN Good Luck ruffled bowl. RARE!   |
| 22 | WOW Hot mari G&C hatpin holder.  | 75  | Nwood 8.5" elec purple Good Luck ruffled bowl.  |
| 23 | White Palm Beach rose bowl   | 76  | Nwood 8.5" mari Good Luck ruffled bowl  |
| 24 | Mari Canoe   | 77  | Nwood 8.5" sapphire Good Luck ruffled bowl RARE- Good Lookin bowl!  |
| 25 | Dugan purple Fish scale & Beads ruffled bowl   | 78  | Nwood 8.5" satin mari Good Luck ruffled bowl  |
| 26 | Fostoria Brocaded Acorn plate  | 79  | Nwood 8.5" purple Good Luck ruffled bowl w/ BW back.  |
| 27 | Imp mari 8.5" Grape ruffled bowl- pretty   | 80  | Nwood 8.5" green Good Luck ruffled bowl w/ BW back.   |
| 28 | MARI Mary Ann 2 handled vase   | 81  | Nwood 8.5" elec blue Good Luck ruffled bowl w/ rib back.  |
| 29 | Imp clambroth Lustre Rose fernery  | 82  | Nwood 8.5" elec purple Good Luck ruffled bowl w/BW back.  |
| 30 | Dugan 10" purple Target vase   | 83  | Nwood 8.5" Horehound Good Luck ruffled bowl w/BW back.  |
| 31 | Imp mari 10" JIP Morning Glory vase  | 84  | Nwood 8.5" blue stippled Good Luck ruffled bowl rib back.   |
| 32 | 3 pcs white Dugan- Leaf Ray- Basketweave vase- grapevine & Lattice ruffled bowl  | 85  | Nwood 8.5" purple stippled Good Luck ruffled bowl w/ rib back.  |
| 33 | Mari African Shield flower arranger  | 86  | Nwood 8.5" ren blue stippled Good Luck ruffled bow w/ rib back.   |
| 34 | Nwood 5" white Peacock at Fountain berry bowl  | 87  | Nwood 8.5" mari stippled Good Luck ruffled bow w/rib back.  |
| 35 | Nwood mari G&C Cologne bottle w/ round collar  | 88  | Nwood 8.5" mari stippled Good Luck PCE bowl w/ rib back.  |
| 36 | Nwood mari G&C cologne bottle w/ flared collar   | 89  | VERY RARE FENTON 9" DARK PUMPKIN MARI JN LEDFORD COOLEEMEE PLATE. BEAUTIFUL PINK IRID ON PUMPKIN COLOR.. Last time we sold one that looked this good it was over 20K! Get in on this one. |
| 37 | Mari Inca faced bottle   | 90  | 2 Imp. Grape 6" plates. elec purple & mari  |
| 38 | Fenton Red Blackberry 6" square OE hat   | 91  | 2 Dugan 6" plates. PO & mari Persian Garden   |
| 39 | Fenton 8.5" GREEN Peacock & Grape 8 ruffled bowl Very scarce color   | 92  | Dugan 6" PO 4 flowers plate   |
| 40 | Cobalt vase  | 93  | 2 Dugan PO CRE plates. Fish scales & smooth ray   |
| 41 | Nwood mari 8 sided bushel basket   | 94  | 3 Fenton 6" mari plates, Cherry Chain- Persian Med - Stippled ray   |
| 42 | 2 Fenton blue OE hats  | 95  | Fenton 9" blue Plaid ruffled bowl. NICE!  |
| 43 | Nwood mari Poppy pickle dish. nice color   | 96  | Fenton 9" purple Plaid ICS bowl. SCARCE   |
| 44 | Nwood purple G&C pin tray  | 97  | Fenton 8.5" mari Plaid ruffled bowl   |
| 45 | Nwood purple G&C dresser tray. NICE!!  | 98  | Fenton 6" mari CRE Blackberry spray hat COOL!   |
| 46 | Nwood 9" IG Peacocks plate. Very nice color  | 99  | Fenton GREEN Mikado compote. RARE! Pretty   |
| 47 | Dugan 9" white Apple Blossom & Twigs ruffled bowl  | 100 | Fenton mari Mikado compote  |
| 48 | Nwood purple G&C Cologne bottle  | 101 | Fenton mari small vintage Epergne   |
| 49 | Nwood purple G&C powder jar.   | 102 | Fenton blue small vintage Epergne   |
| 50 | Nwood IB Drapery candy dish  |     |   |
| 51 | Mari Bobeches'   |     |   |
| 52 | Imp grape elec purple wine bottles- No Stopper Choice. Both wonderful color.   |     |   |
| 53 | Starting the Very nice collection of "Good Luck" that was Ed's pride and joy. Nwood 9" blue Good Luck stippled plate. Scarce |     |   |



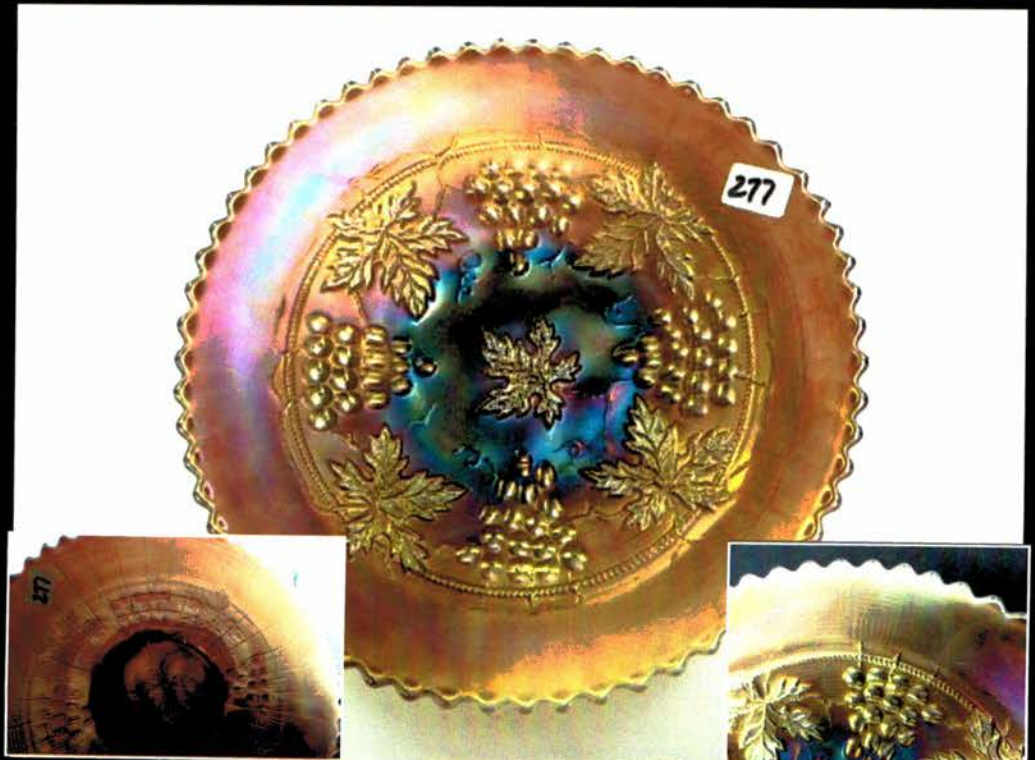
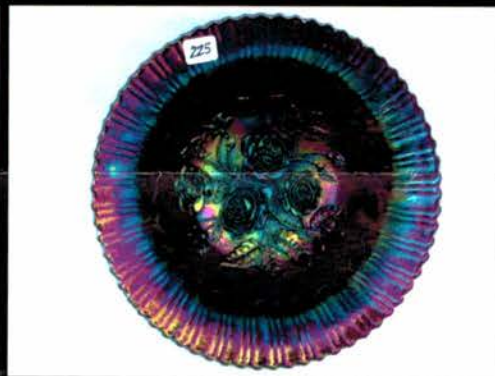
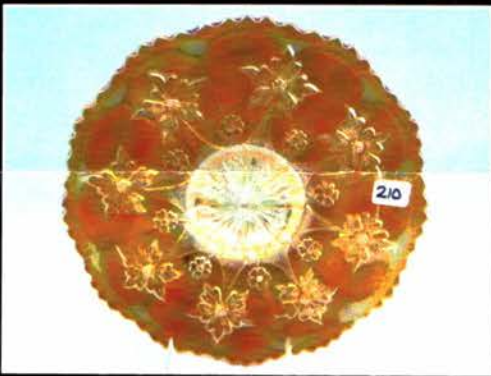
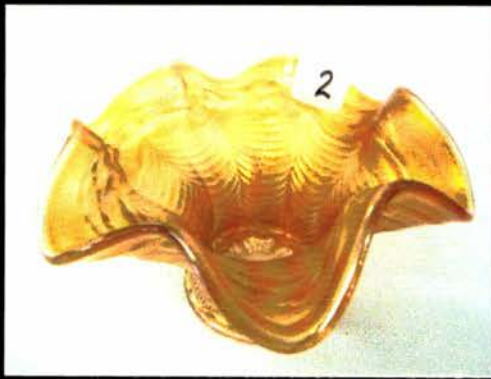
Over 35 Good Luck pieces for you!  
Ed Lovell has Good Luck's!!



- 103 Fenton 9" purple Birmingham Age Herald plate. Scarce.. Not seen one of these in awhile
- 104 3 Fenton Peacock tail advertising hats- 2 Gen. Furniture-Truckey & Sons
- 105 3 Fenton mari OE advertising hats Miller- Brand- Feldman
- 106 Mburg purple Isaac Benesche ruffled bowl Nice detail
- 107 Dugan mari Brooklyn Bridge bowl ruffled flared
- 108 Dugan mari Brooklyn Bridge bowl tight ruffled Both have real nice pressing
- 109 Mburg mari Isaac Benesche Holly card tray
- 110 Mburg Rad. mari Isaac Benesche Holly card tray
- 111 3 Shriners loving cups- Pittsburgh 1909- Rochester NY- New Orleans 1910
- 112 Mburg 9" green Trout & Fly ICS bowl
- 113 Mburg 10" rad purple Primrose ruffled bowl NICE
- 114 Mburg 7" green Blackberry Wreath ICS bowl.
- 115 Mburg 5" rad mari Grape Wreath vari CRE bowl
- 116 Mburg 9" mari Nesting Swans ruffled bowl
- 117 Nwood 9" blue Rose Show plate
- 118 Nwood 8" AO Rose Show ruffled bowl Nice!
- 119 Nwood blue Poppy pickle dish
- 120 Nwood Emerald Green Fruits & Flowers bon bon WOW!
- 121 Nwood AO Fruits & Flowers bonbon. Nice
- 122 Nwood white Embroidered Mums compote Frosty
- 123 Nwood 9" mari 3 Fruits stippled plate
- 124 Nwood 8.5" pumpkin mari 3 Fruits stippled bowl
- 125 Nwood 8.5" white 3 Fruits stippled ruffled bowl Scarce color. Nice
- 126 Nwood 8.5" purple 3 Fruits stippled ruffled bowl Nice elec Hi-lights
- 127 Nwood 8.5" BRIGHT MARI 3 Fruits stippled ruffled bowl. HOT LOT!
- 128 Nwood 9" ELEC GREEN 3 Fruits plate w/ PB WOW!!!!
- 129 Nwood 9" green 3 fruits plate w/ yellow irid
- 130 Nwood EM GREEN 3 Fruits ruffled bowl w/ PB
- 131 Nwood 8" mari 3 Fruits ruffled bowl w/PB Nice
- 132 Nwood IB Opal 3 Fruits Stippled Spatula Ft'd bowl. Scarce
- 133 Nwood WHITE 3 Fruits stippled spatula ft'd bowl
- 134 Nwood green 3 Fruits spatula ft'd bowl Scarce
- 135 Nwood 9" green G&C Stippled plate. OLD ROSE DIST. Scarce
- 136 Nwood 9" green Strawberry PCE bowl w/ BW back Good lookin bowl
- 137 Nwood 7" elec purple Fruits and Flowers ruffled bowl.
- 138 Nwood AO Peacocks ruffled bowl Lite color in center
- 139 Nwood purple Town Pump.
- 140 Nwood 8" purple 3 Fruits spatula ft'd bowl NICE
- 141 Dugan pastel mari Daisy & Web JIP CRE hat. This is a BEAUTY! Tiny chip on base
- 142 Imp elec purple Flute CR- Sugar set
- 143 2 Dugan blue Grape Delight nut bowls
- 144 Imp 9" purple Diamond LAce ruffled bowl
- 145 Fenton blue Butterfly & Fern water pitcher
- 146 Camb. mari Inverted Strawberry stemmed center bowl
- 147 Imp pastel mari Windmill mid-size water pitcher
- 148 Imp dark mari Windmill mid-size water pitcher
- 149 3 mari perfume bottles
- 150 Mari Cruet. Scarce
- 151 Grouping Stretch glass- see photo
- 152 Grouping of Stretch glass- See photo
- 153 Fenton 8" blue Peacock at Urn ICS bowl great color
- 154 Fenton 8" mari Peacock at Urn ICS bowl
- 155 Fenton 9" mari Peacock at Urn ruffled bowl
- 156 Fenton mari Horse MEDallion nut bowl
- 157 Fenton 7" Acorn vaseline bowl. Scarce
- 158 Fenton GREEN Butterfly & Berry master berry bowl. NICE
- 159 Fenton 5" Aqua panther ruffled sauce
- 160 Fenton 8" vaseline G&C ball ft's bowl
- 161 Fenton 7" blue Leaf Chain ruffled bowl
- 162 Fenton 8" elec green Orange Tree ICS bowl
- 163 Fenton 8" mari Dragon & Lotus ICS ft's bowl
- 164 Fenton 8" mari Peacock & Grape deep bowl
- 165 Fenton 6" mari Pinecone plate
- 166 Fenton 9" mari Waterlily ft's bowl.
- 167 Fenton 9" mari Holly plate. Nice example
- 168 Fenton 8" green Thistle CRE bowl
- 169 Fenton 8" purple Thistle CRE bowl
- 170 Fenton 8" green Vintage CRE bowl
- 171 Fenton 8" purple Thistle deep bowl
- 172 Fenton 9" blue Vintage ruffled bowl
- 173 Fenton 8" blue Vintage 3-1 edge bowl
- 174 2 Fenton 8" Peacock Tail ruffled bowls Mari & purple
- 175 Fenton 8" purple Orange Tree ICS bowl SCARCE
- 176 Fenton 8" purple Vintage ruffled bowl
- 177 Fenton 9" mari Holly plate.
- 178 Cambridge green Inv. Feather cracker jar
- 179 Prezsnick G&C humidor
- 180 Dugan PO Raindrops ruffled bowl
- 181 Dugan PO Raindrops 3-1 edge bowl
- 182 Dugan PO Fishnet Epergne. Scarce
- 183 Dugan PO 7" Holly Berry ruffled bowl
- 184 Dugan PO Nautilus sugar
- 185 Dugan PO Fan gravy boat
- 186 Dugan purple Nautilus Creamer
- 187 Dugan elec purple Carolina Dogwood tri corner CRE bowl
- 188 Dugan purple 7" Holly Berry ruffled bowl NICE
- 189 Dugan 9" Apple Blossom Twig low bowl
- 190 Dugan 9" mari Apple Blossom Twig plate
- 191 Dugan 9" frosty white Fanciful plate. Nice
- 192 Dugan 9" white Apple Blossom Twig plate
- 193 Dugan Mari Many Fruits 7 pc punch set round top & base
- 194 2 Dugan PO compotes, Coin Spot & Beads
- 195 West 9" PO Scales plate.
- 196 Nwood purple Acorn Burr 5 pc berry set
- 197 Nwood purple 8" Wishbone ft'd bowl
- 198 Nwood purple Bushel Basket
- 199 Nwood white 8" Drapery vase
- 200 Nwood Blue Opal 3 Fruits stippled ft'd bowl not CG
- 201 Nwood ELEC BLUE Daisy & Plume rose bowl w/ Rasp int. WOW!!
- 202 Nwood purple Blackberry compote
- 203 12" Green Howard Furniture 4 Pillars vase
- 204 Russet Green 12" 4 Pillars vase
- 205 Nwood mari G&C hatpin holder
- 206 Nwood blue Singing Birds mug
- 207 Nwood purple Fine Cut & Roses rosebowl
- 208 Nwood 10" blue Peacock at Urn MIC bowl Very nice color!



- 209 Nwood 8" IB Nippon PCE bowl.
- 210 Fenton 10" DARK MARI 2 Flowers chop plate real nice example
- 211 Nwood mari Springtime Creamer and spooner
- 212 Nwood green Raspberry water pitcher & 2 tumblers
- 213 Nwood mari Grape & Gothic Arches table set
- 214 Nwood purple G&C complete table set
- 215 Fenton 5" mari Sailboats 4 sides up plate Scarce
- 216 Fenton 5" Aqua Water lily ft'd sauce
- 217 Fenton mari Kittens cup & 2 side plate
- 218 Brockwitz mari May basket. Scarce
- 219 Daisy Squares mari CRE round compote RARE
- 220 Mburg mari Feather & Heart water pitcher
- 221 Imp Grape 7" flat plate, elec purple
- 222 Imp 8" Amber Open Rose deep bowl
- 223 Imp 9" elec purple Open ROse ruffled bowl Sweet
- 224 Imp bright mari Lustre Rose Ferner/ center piece
- 225 RARE Imp elec purple Lustre Rose elec purple fruit bowl. Gorgeous!
- 226 Imp mari Lustre Rose fruit bowl
- 227 Imp green Lustre Rose ruffled fruit bowl
- 228 2 Amber Imp Open Rose 9" plates
- 229 Imp green 9" Open Rose plate
- 230 2 mari 9" Open ROse plates
- 231 Imp SMOKE Fashion Cr-sugar set
- 232 2 Imp mari Sherberts
- 233 Imp purple Hobstar & Flower compote. Scarce
- 234 Imp. 12 1/2" Marigold Smooth Panels Funeral Vase
- 235 Imp. Marigold zipper loop Lamp 4 3/4"
- 236 Imp Marigold Zipper Loop Lamp 5 1/4" Base
- 237 Imp MArigold Royalty 10pc Punch Set SCARCE
- 238 Imp 11" Marigold Heavy Grape Chop Plate Very Pretty
- 239 MArigold Fleur De Lys Miniature Oil Lamp
- 240 Imp. 4 3/4" Electric Purple Morning Glory Miniature Neat Oil Slick Iridences
- 241 Imp 4 3/4" Miniature Ripple Vase
- 242 Mordini Price Guides 1987-2008
- 243 Group of Hartung Books
- 244 8 1/2" Vaseline Stretch candlesticks 657
- 245 8 1/2" Blue Stretch candlesticks
- 246 8 1/2" Celeste Blue Stretch candlesticks 310
- 247 Imp. Mari. Premium Candlesticks
- 248 Imp. Pastel Mari. Premium Candlesticks
- 249 8 3/4" Florentine Green Colonial Candlesticks
- 250 8 3/4" Russet Green Colonial Candlesticks
- 251 8 3/4" Forest Green Colonial Candlesticks
- 252 Imp. 7" Smoke Candlesticks
- 253 Imp. 8 1/4" Mari. 474 Vase
- 254 Fenton Blue Illusion Bon Bon
- 255 Imp. 14 1/4" Mari Morning Glory Vase Chip Under Be
- 256 2 Fenton Captive Rose Compotes Mari & White
- 257 Fenton Blue Iris Compote
- 258 Fenton Blue Large Persian Medallion Compote
- 259 Group of 4 Jain Vases See photo
- 260 Fenton Blue Grape & Cable Low Fruit Bowl W/PMINT
- 261 Blue Ribbed JIP Vase GREAT COLOR
- 262 Imp Mari File Ruffled Vase
- 263 4 HP Lamp Shades with Castle Scene
- 264 3 White Iridized Lamp Shades
- 265 Fenton Red Orange Tree Mug
- 266 Fenton Cherry Red Orange Tree Mug
- 267 4 Orange Tree Mugs Vaseline-Blue- 2 Marigold
- 268 Pearl Custard Grape Harbor Tumbler
- 269 Imp 9" Electric Purple Ripple Vase
- 270 Mari Ranger Perfume Bottle
- 271 2 Mari Sailboat Wines
- 272 RARE Imp. Grape Marigold Nut Bowl 3 1/2 x 5" Only One We have seen
- 273 Fenton Cherry Circles 2 Handled Card Tray
- 274 Fenton 16" Blue Rustic Mid Size Vase
- 275 Lot of 5 Carnival Banks
- 276 Nwood 9" purple Peacocks plate. Great color!
- 277 RARE Nwood 8" smokey purple slag G&C plate. Real cool slaggy effect in the glass with plenty of opal. Go figure!
- 278 Nwood AO Hearts and Flowers compote. Nice
- 279 Nwood pastel mari Hearts & Flowers Compote
- 280 RARE Fenton Ice Green Captive Rose compote. WOW! Maybe this is that coke bottle green everyone talks about, what ever the heck that is.....
- 281 Nwood 11" white Diamond Points vase. Pretty
- 282 Nwood AO Double Loop Chalice/Sugar bowl
- 283 Nwood 8.5" Pastel mari Rose Show ruffled bowl.
- 284 Nwood 9" elec purple G&C PCE bowl.
- 285 Nwood purple round Bushel Basket.
- 286 2 Nwood matched mari round Bushel Baskets
- 287 Mburg 10" mari Whirling Leaves 3-1 edge bowl.
- 288 Imp mari 4.5" Thin Rib & Drape & Morning Glory Miniature vases. 1 money for both!
- 289 Imp RED stretch Double Scroll console bowl
- 290 Fenton Vintage fernery- Odd purple base color w/ amberish irid.
- 291 WOW!!! Fenton GREEN Butterfly & Berry water pitcher. STRONG pressing and color!
- 292 Nwood purple G&C tankard. Scarce
- 293 6 Nwood purple G&C tumblers
- 294 Nwood Yellowish G&C stippled banana boat Odd coloration
- 295 Nwood green G&C sugar bowl. Lid is GREAT!
- 296 Nwood purple G&C perfume bottle- stopper has base damage
- 297 Nwood 9" Tree Trunk vase. Dark sapphire or an odd cobalt blue- Wonderful radium irid.
- 298 Nwood 7" mari Tree Trunk squatty vase
- 299 Nwood 6" blue Peacock at Urn Low flared ICS bowl- some would call a plate
- 300 Nwood 5.5" blue Peacock at Urn stippled ICS bowl
- 301 Nwood 6" blue Peacock at Urn ICS bowl
- 302 Nwood 9" HOREHOUND 3 Fruits stippled plate. Great looking scarce plate!
- 303 Nwood 9" radium mari good Luck plate w/BW back
- 304 Fenton 9" blue Peacock at Urn plate. Super pretty plate!!
- 305 Fenton 9" blue Ribbon Tie 3-1 edge bowl.
- 306 Fenton 9" purple Ribbon Tie 3-1 edge bowl
- 307 Fenton 8.5" amber Holly ruffled bowl
- 308 Camb. green Inv. Strawberry powder jar
- 309 Imp 7" mari Ripple vase
- 310 Imp 8" elec purple Star of David bowl
- 311 Imp. 9" mari Open Rose plate -Take a look!





- 312 Dugan ELEC PURPLE Many Fruits punch base WOW!
- 313 Nwood 9" GREEN Rose SHow plate. Nice
- 314 Imp ELEC PURPLE Homestead chop plate. Nice lookin plate!
- 315 Dugan 9" PO Fanciful 3-1 edge bowl. Nice rich color
- 316 Dugan 9" PO Round Up 3-1 edge bowl. Nice rich color
- 317 Dugan 10" PO Garden Path Vari ICS bowl w/ Soda Gold ext.
- 318 RARE Dugan mari Christmas Compote. Nice color and hardly ever offered at auction. Harder to find than purple.
- 319 Dugan 10" ELEC PURPLE Wishbone & Spades chop plate. HOT!!! Tiny flick on edge. no harm
- 320 Dugan 6" elec purple Wishbone & Spades plate Another hotty!
- 321 Dugan elec purple Grape Delight rosebowl
- 322 Dugan 7" elec purple Bells & Beads bowl
- 323 Dugan 9" elec purple Fanciful low ruffled bowl WOW!!
- 324 Dugan 9" elec purple Round Up low ruffled bowl. Very sharp!
- 325 Dugan 9" lav. Apple Blossom & Twigs low bowl - great color
- 326 Dugan purple Holly Berry Gravy. Nice
- 327 RARE Dugan ELEC PURPLE Flower & Frames tri-cornered bowl. WOW! HOT LOT!
- 328 Dugan purple Wreathed Cherry water pitcher w/ 1 tumbler
- 329 Dugan 9" white Fanciful low bowl
- 330 Dugan 9" white Fanciful ICS bowl
- 331 Dugan 9" white DDouble Stem Rose dome ft'd bowl
- 332 Dugan white Question Marks plate
- 333 Dugan 10" white Garden Path Vari. ruffled bowl
- 334 Dugan 10" white Garden Path Vari. ICS bowl
- 335 Dugan 8" white Six Petals ruffled bowl
- 336 Dugan 6" white Persian Garden ICS bowl ALL of this series of white is really nice and frosty!
- 337 Dugan mari Rambler Rose 6 pc water set
- 338 Dugan mari Grapevine Lattice 7pc water set
- 339 Fenton 8" purple Captive Rose CRE edge bowl
- 340 Fenton 8" blue Captive Rose CRE edge bowl
- 341 Fenton 8" green Captive Rose CRE edge bowl
- 342 Fenton 8" mari Captive Rose CRE edge bowl
- 343 Fenton 8" green Thistle CRE edge bowl
- 344 Fenton 8" purple Heart & Vine CRE edge bowl
- 345 Fenton 9" purple 2 flowers CRE bowl
- 346 Fenton 9" GREEN Ten Mums CRE bowl Scarce
- 347 Fenton 8.5" LGO Peacock and Grape 3-1 edge bowl scarce
- 348 Fenton 9" GREEN Holly plate- Nice rich green
- 349 Fenton 9" blue Holly plate
- 350 Fenton 9" frosty white Holly plate
- 351 Fenton 9" mari Holly plate
- 352 Fenton 9" bright mari Orange Tree plate Here's a looker!
- 353 Fenton 9" mari Orange Tree Plate.
- 354 Fenton 9" Peacock at Urn plate. Nice
- 355 Fenton 8.5" purple Peacock at Urn ruffled bowl Scare
- 356 Fenton 8.5" mari Peacock at Urn ruffled bowl
- 357 Fenton 9" RED Peacock & Grape 8 ruffled bowl Has a heat check on side of the bowl. Very hard to see, but there
- 358 Fenton pastel mari Persian Medallion lg compote w. CRE
- 359 Fenton 9" blue 2 Flowers ft'd ICS bowl
- 360 Fenton RED 5" Waterlily ft'd sauce. NICE!
- 361 Fenton RED 5" Waterlily ft'd sauce. NICE! perfect matched pair if you want 2!
- 362 Fenton vaseline Holly compote
- 363 Fenton vaseline Peacock at Urn compote
- 364 Fenton 7" Blackberry OE vase w/ flared top. Scarce
- 365 fenton mari Leaf Tiers complete table set Scarce!
- 366 Cambridge mari Inv Strawberry tankard. Great radium irid!
- 367 Imp elec purple Hattie rosebowl. Scarce
- 368 Imp mari Hattie rosebowl
- 369 Imp elec purple Cobblestone ruffled bowl Very nice
- 370 Imp 7" elec purple
- 371 6 Imp Killer elec purple grape tumblers- Pitcher is outstanding but cracked.. Getting the pitcher free!!
- 372 Mburg 6" mari Holly Whirl Var deep round bowl w/ CRE.
- 373 Mburg 5" Grape Wreath var CRE round bowl
- 374 Mburg 10" rad purple Nesting Swans ruffled bowl very nice color
- 375 Mburg 10" mari Nesting Swans ruffled bowl Pretty
- 376 Fenton mari Mikado round compote. Nice
- 377 Nwood Ice Green Heart & Flower ruffled compote. Great pastel irid!!
- 378 Nwood mari Heart & Flower compote
- 379 Nwood white Heart & Flower compote
- 380 Nwood mari Peacock at Fountain 6pc punch set Scarce. Always a hit!
- 381 Nwood 9" purple Wishbone ruffled bowl
- 382 Nwood 10" Ice Green Peacock at Urn ICS bowl Scarce and pretty!
- 383 Nwood 10" mari Peacock at Urn MIC bowl
- 384 Nwood 8.5" IG Drapery vase. nice
- 385 Nwood IB Drapery candy dish
- 386 Nwood IG Drapery candy dish- close to lime
- 387 Nwood 8.5" IB Heart & Flower ruffled bowl cool coloration
- 388 Nwood 8.5" white Heart & Flower ruffled bowl
- 389 Nwood lav. Leaf & Beads rosebowl Looks kinda like a smokey sapphire color
- 390 Nwood AO Beaded cable rosebowl
- 391 Nwood mari Singing Birds mug
- 392 Nwood 9" mari Strawberry Stippled PCE bowl
- 393 Nwood 9" mari Strawberry ruffled bowl w/ BW back
- 394 SUPER Nwood 9" IG Rose Show plate. A winner!
- 395 Nwood 9" Frosty IB Rose Show Plate. Another great plate
- 396 Nwood 9" white Rose Show plate
- 397 Nwood 8" mari Rose Show bowl
- 398 Nwood 8.5" IB G&C stippled PCE bowl. A Keeper!
- 399 Nwood 8" mari Good Luck Stippled ruffled bowl
- 400 Nwood 9" mari Good Luck PCE bowl w/ BW back
- 401 Nwood 9" pastel mari Good Luck PCE bowl WOW!!
- 402 Nwood 9" green Peacocks plate. Tiny flake on base Scarce
- 403 Nwood 9" IG Peacocks plate. Nice
- 404 Nwood 9" mari Peacocks stippled PCE bowl
- 405 Nwood 9" elec purple Peacocks PCE bowl. HOT LOT!
- 406 Nwood 8" AO Peacocks ruffled bowl. Pastel
- 407 Nwood 9" elec blue 3 Fruits stippled plate
- 408 Nwood 9" mari 3 Fruits stippled plate
- 409 Nwood 8" rad mari 3 Fruits stippled bowl
- 410 nwood mari 5pc Peacock at Fountain water set. Good Looking set

**Start of the Stretch Glass Listing for Jan's collection.  
Saturday October 26th at 10:00 AM**

- 1001 NW jade blue candlestick six sided, 8.5"  
 1002 NW jade blue pr candlesticks 6 sided- colonial 8 1/2"  
 1003 NW russet pr candlesticks 8 1/2 colonial Colonial  
 1004 NW russet pr candlesticks Trumpet 6 1/2"  
 1005 NW russet Bon bon  
 1006 NW blue Bonbon  
 1007 NW topaz handled server  
 1008 Handled server celeste blue  
 1009 NW blue bowl rolled rim 11" W  
 1010 NW blue bowl rolled rim 7 1/8"W  
 1011 NW blue round bowl  
 1012 NW blue bowl rose cupped  
 1013 NW blue bowl fern 3 footed flared 6"  
 1014 Fenton topaz bowl shallow cupped w/ oval cuts 10 3/4"  
 1015 Fenton celeste blue bowl shallow cupped w/ oval cuts 10 3/4"  
 1016 Fenton velva rose bowl shallow cupped 8 3/4"  
 1017 Fenton velva rose cracker and cheese set  
 1018 NW jade blue bowl 6 1/8"  
 1019 NW jade blue bowl ribbed and cupped 8 1/4"  
 1020 NW topaz vase rolled rim ground foot 7" H 9" W HARD TO FIND  
 1021 NW topaz bowl rolled rim 10 3/4"  
 1022 NW russet bowl rose bowl cupped 15 panels 4 3/4"  
 1023 NW blue comport flared cupped 21 ribs 7 1/2" H  
 1023 NW blue comport cupped 21 ribs  
 a  
 1024 NW blue comport flared straight side 8 7/8" w  
 1025 NW russet comport flared straight side 21 ribs 8 1/2" W  
 1026 Diamond blue bowl wide flared cupped w/ white enamel 10" w  
 1027 Diamond blue pr candlesticks wide flared bottom w/ white enamel 9"  
 1028 Diamond green bowl wide flared cupped 10" w  
 1029 Diamond green pr candlesticks wide flared bottom 9"  
 1030 Diamond blue pr candlesticks wide flared bottom 9"  
 1031 USG mandarin yellow pr candlesticks 9"  
 1032 USG mandarin yellow bowl low footed cupped 6 sets of optic rays and points 6 3/4 "  
 1033 USG mandarin yellow bowl low footed flared 6 sets of optic rays and points 6 1/4"w  
 1034 USG mandarin yellow bowl low footed flared 6 sets of optic rays and points 9 3/4"  
 1035 USG mandarin yellow creamer only  
 1036 USG mandarin yellow vase cylinder 5 7/8"h  
 1037 USG mandarin yellow vase flared top 5 7/8" h  
 1038 USG jade green bowl low footed 6 sets optic rays and points 6 1/2"  
 1039 USG jade green vase cylinder 8"  
 1040 Diamond blue pr candlesticks spindle type 8"  
 1041 Diamond green pr candlesticks spindle type 8"  
 1042 Diamond blue pr candlestick w vase 9 5/8"  
 1043 Diamond green pr candlesticks w vase 9 5/8"  
 1044 Diamond blue pr candlesticks w vase 7 3/8"  
 1045 Diamond green pr candlestick w vase 7 1/4"  
 1046 Diamond blue pr of vases ribbed 8"  
 1047 Diamond green vase ribbed 8"  
 1048 USG blue bowl open work rolled rim 10"  
 1049 USG crystal bowl open work cupped 12"  
 1050 USG blue bowl open work cupped 11"  
 1051 USG green server handled  
 1052 USG blue comport low footed 7"  
 1053 USG crystal vase footed 5 5/8"  
 1054 USG topaz/blue pr candlesticks wide base w/ blue rim 7 1/2"  
 1055 NW light blue bowl cupped and crimped sq foot w/ tree bark base  
 1056 NW light blue green bowl cupped & crimped sq. foot w/ tree bark base  
 1057 NW pearl bowl cupped and crimped sq foot w/ tree bark base  
 1058 NW blue bowl cupped & crimped sq foot w/ tree bark base  
 1059 NW dk green bowl rolled rim sq foot w/ tree bark base  
 1060 NW topaz bowl rolled rim sq foot w/tree bark base  
 1061 NW topaz bowl cupped and crimped w/ tree bark base  
 1062 NW royal purple bowl cupped & crimped w/ tree bark base  
 1063 NW blue bowl cupped & round sq foot w/ tree bark base  
 1064 Fenton celeste blue vase tall ribbed  
 1065 Fenton royal blue vase tall ribbed  
 1066 Fenton velva rose bowl flip 11 1/4  
 1067 Fenton Persian pearl pr candlesticks  
 1068 Fenton velva rose pr candlesticks  
 1069 Fenton persian pearl vase  
 1070 Fenton celeste blue bowl cupped 12 1/2"  
 1071 Fenton celeste blue bowl cupped 9 3/4"  
 1072 Fenton persian pearl comport cupped  
 1073 Fenton persian pearl candy jar 1/2 lb w/ lid  
 1074 Fenton persian pearl candy jar rib optic 1 lb w/ lid  
 1075 Fenton persian pearl bonbon  
 1076 Fenton persian pearl pr candlesticks 8 5/8"  
 1077 Fenton persian pearl bowl tulip oval flared 13"  
 1078 NW blue 14 piece water set w/lid & coasters  
 1079 Fenton topaz 6 piece water set w/ cobalt handle  
 1080 Diamond green candlestick/bowl pat applied for on base  
 1081 Diamond blue candlestick/bowl pat applied for on base  
 1082 Diamond blue Adam's rib sugar 2 handled  
 1083 Diamond green Adam's rib sugar 2 handled  
 1084 Diamond blue vase,car,crimped note dent on side  
 1085 Diamond blue vase, car, cupped marked Benzar note dent on side  
 1086 Diamond green vase cylinder 9 3/4"  
 1087 Diamond pearl vase pinched 9 3/4"  
 1088 Diamond mug paneled handled HARD TO FIND  
 1089 Fenton ruby red punch bowl and base  
 1090 Fenton velva rose bowl 3 footed crimped  
 1091 Fenton florentine green punch bowl  
 1092 Fenton florentine green tray butter ball round  
 1093 Fenton ruby red bowl cupped 7 1/8"  
 1094 Fenton ruby red bowl 5 3/4 "  
 1095 Fenton ruby red bowl cupped 7 1/2 w/ gold trim  
 1096 Fenton ruby red bowl 7 3/8"  
 1097 Fenton ruby red vase flared 8 1/8" great stretch  
 1098 Fenton vase flared 6 1/4" weak red  
 1099 Fenton persian pearl bowl 3 footed cupped  
 1100 Fenton persian pearl punch bowl

- 1101 Fenton persian pearl candy jar w/ grape etching & gold trim  
VERY NICE
- 1102 NW topaz bonbon
- 1103 NW topaz 1 lb candy jar
- 1104 NW topaz bowl w/ gold trim 28 optic rays 8 1/4"
- 1105 NW topaz bowl w/ gold trim 7 1/2"
- 1106 NW topaz pr candlesticks 6 sided 8 1/2"
- 1107 NW topaz pr candlesticks spindle 8 3/4"
- 1108 Fenton persian pearl mayonnaise
- 1109 Fenton persian pearl cupped salver
- 1110 Fenton pair (2) persian pearl sherberts & under plates, center
- 1111 Fenton persian pearl candlesticks
- 1112 Fenton persian pearl bowl cupped 6 1/2"
- 1113 Fenton persian pear bowl cupped 7 1/2"
- 1114 Fenton persian pearl mayonnaise no ladle
- 1115 Fenton florentine green bonbon 1 lb
- 1116 Fenton Florentine green bonbon round stem 1/2 lb.
- 1117 Fenton florentine green server round handled 10 1/4"
- 1118 Fenton florentine green vase rib optic 8 1/2"
- 1119 Fenton florentine green vase fan melon rib 7 3/8" x 10 3/4"
- 1120 Fenton florentine green vase fan melon rib 5 1/4" x 8 1/2 "
- 1121 USG pink bowl flared
- 1122 USG pink comport flared 3 footed
- 1123 USG pink comport high footed
- 1124 USG pink mayonnaise w/under plate & ladle ( hard to find)
- 1125 USG pink handled server
- 1126 IMP pearl white bowl w/imperial mark & decoration 6 1/2"
- 1127 IMP pearl white bonbon w/ imperial mark 5 1/2 "
- 1128 IMP pink ice vase w/ imperial mark 7" x 4 7/8"w
- 1129 IMP pink ice vase w/ imperial mark 5 3/4 " 5 1/8"w
- 1130 IMP pearl amethyst bonbon w/ imperial mark 5 1/4"
- 1131 IMP pearl amethyst vase w/ imperial mark 6 1/4" x 5"
- 1132 IMP pearl green or rose ice plate w/ imperial mark 9 1/2"
- 1133 IMP pear amethyst bowl sq w/ imperial mark 5 1/2 "
- 1134 IMP pearl green or rose ice bowl sq. w/ imperial mark 5 1/4"
- 1135 IMP iris ice vase 5 1/4" x 5 1/2"
- 1136 IMP iris ice plate 16 panels 13"
- 1137 Imperial iris ice bowl 15 panels 9"
- 1138 IMP green ice bowl 12 panels 8 3/4"
- 1139 IMP green ice bowl 12 panels 9 5/8"
- 1140 IMP iris ice bowl 12 panels 9"
- 1141 IMP amethyst ice bowl 12 panels 9"
- 1142 Imp Pink 10.5" 8 sided cake plate
- 1143 Imp. Iris Ice 3 ft'd, 15 panels, 9" bowl
- 1144 Imp Iris Ice 3 ft'd, 11 panels, 10 7/8 Cake Plate
- 1145 Imp. Pink Smoke, 8 panels, 10" Bowl w/handles
- 1146 Imp. Pink Mari., Ends up, Ftd'd, 12 3/4 bread plate
- 1147 Imp. Amethyst Ice, 14 panels, 8 1/2" Plate
- 1148 Imp. Green Ice, 14 panels, 8 1/2" plate
- 1149 Imp. Rose Ice, 14 panels, 8 1/2" Plate
- 1150 Imp. Blue Smoke, 14 Panels, 8 1/2" Plate
- 1151 Fen. #401 Persian Pearl, Tumble Up Set, 2 pc.
- 1152 Fen. #200, Florentine Green Guest Set, 2 pc. w/cobalt handle
- 1153 Fen. 401 Florentine Green, Tumble Up Set 2 pc.
- 1154 Fen. 200, topaz w/cobalt handle, 2pc. Guest Set
- 1155 Fen. 401, Topaz, Tumble Up 2 pc. set
- 1156 Fen. 349, Celeste Blue, 10 1/2" pair candlesticks
- 1157 Fen. 449, Celeste Blue, 8 1/2" pair candlesticks
- 1158 Fen. 549, Celeste Blue 8 1/4" Pr. candlesticks
- 1159 Fen. 316, Celeste Blue 3 1/2" H, One Ring Pr. Candlesticks
- 1160 Fen. 250, Celeste Blue, 2 3/4" ft'd Fern Dish
- 1161 Fen. #293, Celeste Blue, Master & 2 nut cups
- 1162 Fen. 293, Topaz, Master & 3 nut cups
- 1163 Fen. 293, Velva Rose, Master Nut Cup
- 1164 Fen. 202, Celeste Blue, Ashtray Only
- 1165 Fen. 109, Celeste Blue, 5 1/2 W Cupped Bowl
- 1166 Fen. .643, Florentine Green, 5" W cupped compote
- 1167 Fen. 750, Topaz Octagonal, bowl, scarce shape
- 1168 Fen. 202, Topaz Ashtray Only
- 1169 Fen. 449. Topaz, 8 1/2" Pr. Candlesticks
- 1170 Fen. 449, Florentine Green, 8 1/2" Pr. Candlesticks
- 1171 232 Topaz, 8 1/2" Pr. Candlesticks
- 1172 Fen. 712, Florentine Green, cupped 6 1/4" comport
- 1173 Fen. 643, Celeste Blue, Card Trays X 3
- 1174 Fen. 317, Celeste Blue 10 1/4" Handled Round Server
- 1175 Fen. 621, Celeste Blue, 8 1/2 " H Vase
- 1176 Fen. 570, Celeste Blue, 7" W Rib Optic Vase
- 1177 Fen. 545, Topaz 5 1/4" ribbed & cupped bowl
- 1178 Fen. 572, Topaz Vase
- 1179 Fen. #847, topaz, 5 3/4"W, 8"H, Melon ribbed Vase
- 1180 Fen. 857, Topaz, 8 3/4"W, 10"H, Melon Ribbed Vase
- 1181 Fen. 570, topaz, 6"H, Optic, Rib Optic vase
- 1182 Fen. 1532A, Topaz, 5 1/2" W, Twin Dolphins Vase
- 1183 Fen 736, 6 3/8"W rib Optic Vase
- 1184 Fen. topaz, 4 1/2" Cupped Bowl
- 1185 Fen 549, Celeste Blue, 8 1/2" Pr. candlesticks Black Foot
- 1186 Fen. #9, Celeste Blue, 3/4 lb. candy jar w/ grape wheel cutting
- 1187 Fen. 251, Florentine Green, 12"H bud vase
- 1188 Fen. 251, Florentine Green, 12"H bud vase
- 1189 Fen. 251, celeste Blue, 12"H, Bud vase
- 1190 Fen. 251, aquamarine Jack-in-the-Pulpit Bud Vase, SCARCE
- 1191 OUT
- 1192 Fen. 251, Celeste Blue, 11 6/8" H Bud Vase
- 1193 Fen. 252, Topaz, 11 1/4" Bud Vase
- 1194 Fen. 314, Tangerine, Pair of candlesticks
- 1195 Fen. 318 Tangerine, Pair of Candlesticks
- 1196 OUT
- 1197 Imp., Red 8 1/4"W, 14 panels, plate GREAT STRETCH
- 1198 iMP. Red, 10"W 12 panels, Bowl GREAT STRETCH
- 1199 Imp. Red, 4 1/2"W, 11"H Vase
- 1200 Imp. Red #6009, 9"H, Candlestick ONLY ONE CANDLESTICK
- 1201 Imp. Red, #600, 5 5/8" W 18 rays Comport
- 1202 Imp. Red 499, 3 7/8W Optic Rays Sherbet
- 1203 Imp. Red, 7 1/4" W, 12 panel round bowl
- 1204 Imp Red, 8 1/4W 12 panel Round Bowl
- 1205 Imp. Red 8 1/2" 12 panel flared bowl
- 1206 Imp. Red, 12 3/4" 16 panels plate
- 1207 Fen. Celeste Blue, 9 1/2" High Standard cupped comport
- 1208 Fen. #8, Celeste Blue, 1/2 lb. Candy Jar
- 1209 Fenton #9, Celeste Blue, 3/4 lb. Candy Jar
- 1210 Fen. 835, celeste Blue 1/2 lb. Candy Jar

- 1211 Fen. 314, Celeste Blue, Pr. Candlestick
- 1212 Fen. 315, Celeste Blue, Pr. candlesticks
- 1213 NW, Topaz 6 1/2" 12 sided Ft. w/ tree Bark Base Comport
- 1214 NW Blue, 6" 12 sided Ft. w/ tree Bark Base Comport
- 1215 NW Blue, 12 sided, flared, cupped W/ no tree bark base Comport, SCARCE FOOT AND GREAT STRETCH
- 1216 NW topaz, 9 1/4" 12 sided, flared, cupped, foot w/NO TREE BARK BASE comport
- 1217 NW BLue flared, 12 sided ft. w/ tree bark base 1/4" comport
- 1218 NW Topaz, 505, flared, Cupped 12 sided ft. w/ tree bark base
- 1219 OUT
- 1220 Fen., Florentine Green, 4 1/2" Sm. cupped bowl
- 1221 Fen. Florentine Green, 5" W, Small cupped bowl
- 1222 Fen. Celeste Blue, 4 5/5" small cupped bowl
- 1223 Fen. 316, Florentine Green, Cheese & Cracker Set
- 1224 Fen. 202, Celeste Blue, Ashtrays, CHOICE
- 1225 Fen. 313, Florentine Green, Pr. of candlestick
- 1226 Fen. 314, Florentine Green, Pr. of candlesticks
- 1227 Fen. 316, Florentine Green, Pr. of Candlesticks
- 1228 Fen. 923, Florentine Green, Mayo or Master Nut Cup
- 1229 Fen. #349, Persian Pearl, ball ft'd bowl SCARCE
- 1230 fEN. 857, aquamarine 9 3/4" flared, Rolled rim, melon rib bowl
- 1231 Fen. 857, 10 1/2" W, crimped, melon rib bowl
- 1232 Fen 643 Aquamarine, cupped salver
- 1233 Fen. Aquamarine flared, melon rib 7 1/2" bowl
- 1234 Fen. 318, aquamarine, pr. of candlesticks
- 1235 Fen. 923, Aquamarine, Mayonnaise
- 1236 Fen. 574, Aquamarine, flared, crimped vase
- 1237 Vineland, blue, pr. 7" candlesticks
- 1238 Vineland, Tut Blue, 8 5/8" crimped, flared bowl
- 1239 Vineland, Blue, Rolled Rim, 7 3/4" bowl
- 1240 Vineland, Wisteria 6 1/2" cupped bowl
- 1241 Vineland Wisteria 9" flared bowl
- 1242 NW 658 Blue, 6 7/8" 6 sided Pr. of candlesticks
- 1243 NW 658, blue 8 1/2" 6 sided pr. of candlesticks
- 1244 NW blue, 8 5/8", 6 sided, colonial, Pr. of candlesticks
- 1245 NW 630 8 7/8 W, Good Stretch Plate
- 1246 NW Jade Blue 637, 7 1/2" flared, bell shape 21 ribs comport
- 1247 Vineland, wisteria, 6 7/8" thick base, pr. Candlesticks, Hard to find.
- 1248 Vineland, wisteria, 9" cupped bowl, hard to find NOTE:, the two above make a nice console set.
- 1249 Central, blue, 7" pr. candlesticks
- 1250 Jeanette, Mari. 9" flared, 3 ft'd base, bowl
- 1251 Lancaster, Ruby lustre, 6 7/8" flared, flattened with flowers comport
- 1252 Topaz, 3 3/4"W, Bobeches, Note Undersides
- 1253 Fen. #2, celeste Blue, Creamer only w/ cobalt handle
- 1254 Fen. Florentine Green, Toothpick or pen holder, DESIRABLE
- 1255 Fen. wisteria, Toothpick or pen holder DESIRABLE
- 1256 Fen. #3, Aquamarine, Sugar Only
- 1257 Fen. #3, Velva rose, Creamer & sugar set
- 1258 Fen. #3, tangerine, Creamer & Sugar Set
- 1259 Fen. #3, Celeste Blue, Creamer & Sugar Set
- 1260 Fen. #3 Topaz, Creamer & Sugar Set
- 1261 NW Topaz, 559, Diamond Optic, Pitcher & tumbler night set
- 1262 Imp. Ice Blue, 10 1/2" W, Handled, w/cutting Server
- 1263 Imp. Blue Ice, 10 1/2"W Handled w/cutting Server
- 1264 Imp. Pearl White, 6 3/4" Chesterfield w/ Imperial Mark Comport
- 1265 Imp. Green Ice, 7 1/2" Chesterfield w/Imperial Mark Comport
- 1266 Imp. Pearl White, 7 1/2" Chesterfield w/Imperial Mark Comport
- 1267 Imp. Pearl White, 6 1/4" Chesterfield w/Imperial Mark Comport
- 1268 US Glass,Blue, 9 1/2" W bowl #314
- 1269 US Glass, Topaz, 8 1/2"W Plate
- 1270 US GLass, Cumula/Crystal 6 3/4"W Low ft'd Bowl, RARE
- 1271 US Glass, Blue w/black trim, 4/2" H Sherbet
- 1272 US Glass, Blue, 4 1/2" H Sherbet
- 1273 US Glass, Topaz, 4 1/2" H Sherbet
- 1274 US Glass Green & Topaz 8" W, 13 panels Plate, unusual color (2 Pcs.)
- 1275 US GLass Amber, 8" W, low ft'd, wide flare Comport
- 1276 Diamond, Green 10 1/4" Bowl, Great Stretch
- 1277 Diamond, Green 9 1/4"W cupped bowl, good stretch
- 1278 Diamond 7 3/4"W Pressed Star plate
- 1279 Egyptian Lustre 5 5/8" cupped bowl
- 1280 Diamond Green, 4"W sherbet
- 1281 Diamond, Blue 4"W sherbet
- 1282 Imp. Pink Smoke 725, 12"W Heart Handled Server
- 1283 Imp. Blue Ice, 9 1/2"W handled, cupped w/cutting server
- 1284 Imp. Blue Ice, 9"W Handled, Cupped Server
- 1285 Imp. Iris Ice 10 3/4" handled, w/cutting server
- 1286 Imp. Iris Ice 14 panels 8 1/4"W Plates
- 1287 Imp. Iris Ice, 10 panels, Mayonnaise, NO UNDER PLATE
- 1288 Imp. Iris Ice #600, 4" W, Chesterfield Sherbet
- 1289 NW, Pearl, #807, flared, sq. ft. w/tree bark Base Bowl
- 1290 NW Ivory #64710"W bowl
- 1291 NW Ivory, 657, 8 1/2" 6 sided, pr. candlesticks
- 1292 NW Ivory #616, 11" W Cupped bowl
- 1293 NW BLue w/gold #685, Sherbet & Under plate set
- 1294 NW,Topaz, #685 Sherbet & Under plate
- 1295 NW Topaz, #722, Custard/Ice Cream & Under plate Set
- 1296 NW, Blue, #684, bowl. 11 1/2" Optic Rays BLACK FOOT,Rolled Rim, Bowl
- 1297 Imp. Red, double scroll 3 pc. console set
- 1298 Imp. Iris Ice, Double Scroll Candlesticks
- 1299 Imp. Green Ice, Handles Basket
- 1300 Imp. Blue Ice, Handled Basket
- 1301 Imp. Iris Ice, handled basket
- 1302 USG crystal comport high footed 6 1/2" H
- 1303 USG topaz # 314 bowl 8/12" W
- 1304 USG topaz bowl 10/12/" W #314
- 1305 USG topaz pr candlesticks 9 3/4" #315
- 1306 USG blue bread plate 12 1/2"W
- 1307 USG crystal handled server #179
- 1308 USG topaz handled server #179
- 1309 NW blue mayo& under plate #621/624
- 1310 NW blue candy jar 1/2 lb #659
- 1311 NW blue candy jar 1 lb. # 636
- 1312 NW topaz bowl punch bowl type w/ gold decor 10" w
- 1313 NW topaz bowl flared 11" w
- 1314 Diamond green bowl cupped 7 3/4"

- 1315 Diamond blue bowl flared straight sided 10"w  
1316 Diamond blue bowl flared straight sided 10" w 9 1/2" h on silver plate base  
1317 Diamond green bowl flared straight sided 11 1/4" w  
1318 Diamond blue Adams Rib candy jar bottom only  
1319 Diamond blue candy jar 1 lb  
1320 Diamond green candy jar 1 lb  
1321 Diamond Green shovel handle server  
1322 Diamond green heart handle server  
1323 Diamond heart handle server  
1324 Diamond green bonbon  
1325 Diamond green bonbon w/ gold trim  
1326 NW topaz cupped bowl stuck up based " base ground  
1327 NW blue cheese dish no under plate rolled bowl  
1328 NW topaz ground foot plate 9 1/4" w  
1329 NW topaz bowl w/ wheel cutting 6 7/8" w #650  
1330 Diamond blue ribbed vase 12" h  
1331 USG green plate 7 7/8" w unusual color  
1332 USG pomona plate red & green enamel scarce 8" w  
1333 NW topaz plate #630  
1334 NW (2) blue 27 ribbed plates #639  
1335 NW (2) topaz 27 ribbed plates #639  
1336 NW topaz mayonnaise no under plate #621  
1337 NW blue mayonnaise bowl & under plate #621 674  
1338 NW blue optic bowl #301  
1339 NW topaz baked apple bowl #650  
1340 NW blue baked apple bowl #650  
1341 NW blue almond bonbon w/cover scarce #691  
1342 NW blue handled candlestick only one  
1343 NW topaz handled candlestick only one # 675  
1344 Fenton celeste blue bowl 12 panel 12 1/4" w # 550  
1345 Fenton florentine green melon ribbed flared bowl 11 1/4" w #857  
1346 Fenton velva rose melon ribbed flared bowl 9 3/4" # 857  
1347 Diamond green Adam's Rib bowl rolled rim 11 1/2" w  
1348 Diamond blue Adams rib bowl rolled rim 11 1/2" w  
1349 Diamond Adams Rib bowl wide flared 11" w  
1350 Diamond crystal comport sawtooth stem 5 1/2" h  
1351 USG blue bowl punch type low footed w/ blk trim 9 3/4" w SCARCE # 179  
1352 USG topaz comport 6 optic rays & points 7 3/4" w  
1353 USG blue footed vase 5 1/2" w # 179  
1354 USG jade green comport 6 optic rays & points 9 1/4" w  
1355 Diamond blue cupped comport hexagon foot 8 1/2" w  
1356 Diamond blue comport sawtooth stem cupped 6 1/4"  
1357 Fenton Velva Rose Round handled server 10.5" #317  
1358 OUT  
1359 Fenton velva rose pr candlesticks w/ painted roses #314  
1360 Fenton velva rose pr of candlesticks #315  
1361 Fenton velva rose melon ribbed vase sm # 847  
1362 Fenton velva rose melon ribbed vase lrg # 857  
1363 Fenton velva rose rib optic fan vase # 570  
1364 Fenton tangerine pr candlesticks one ring #316  
1365 Fenton tangerine flared bowl 12 panel 12 1/2" w # 550  
1366 Fenton tangerine flared ringed bowl 7 1/2" # 1512  
1367 Fenton tangerine flared ringed bowl 9 1/2" w #1512  
1368 Fenton tangerine mayonnaise/nut cup # 923  
1369 Fenton tangerine crimped bowl 5 rings  
1370 Fenton tangerine bon bon 6 1/4" w no lid #844  
1371 Fenton topaz candy jar 1/2 lb w/lid #8  
1372 Fenton topaz candy jar 1/2 lb w/lid # 835  
1373 Fenton topaz candy jar 1 lb w/lid # 736  
1374 Fenton topaz candy jar 1 lb w/ gold on rim & gold decor on lid # 736  
1375 Fenton topaz bon bon #643  
1376 Fenton topaz pr candlesticks # 314  
1377 Fenton topaz pr candlesticks # 316  
1378 Fenton topaz pr candlesticks #315  
1379 Fenton velva rose flared melon ribbed bowl #847  
1380 Fenton velva rose cupped salver # 643  
1381 Fenton velva rose flat salver 7" w # 643  
1382 Fenton velva rose candy jar 1/2 lb # 835  
1383 Fenton velva rose candy jar 1/2 lb # 635  
1384 Fenton celeste blue bon bon #643  
1385 Fenton celeste blue pr candlesticks 6 1/2" h # 249  
1386 Fen. Velva Rose Squ.Comport Twin Dolphin Handle #1533A  
1387 Fen. Velva Rose Deep Oval Comport Twin Dolphin #1608  
1388 Fen. Topaz Oval Comport Twin Dolphin #1533A  
1389 Fen. Velva Rose 1lb Candy Jar w/Lid FLOWER TOP GONE  
1390 Fen. Florentine Green 3/4lb Candy Jar Twin Dolphin HP on Lid  
1391 Fen. Florentine Green Candy Jar 1/2lb #835  
1392 Fen. Florentine Green Candy Jar 1/2lb #8  
1393 Fen. Florentine Green Candy Jar 1/2lb Rib Optic #735  
1394 Fen. Florentine Green Salver 6 1/2' #643  
1395 Fen. Florentine Green Salver Cupped 6 1/2" #643  
1396 Fen. Florentine Green Flared Vase 6"W, 6 1/4" H #612  
1397 Fen. Florentine Green Flared Vase 4 1/2"W, 5 1/2H #612  
1398 NW Jade Blue Flared Bowl, 7 5/8"  
1399 NW Jade Blue Bonbon  
1400 NW Jade Blue Candy Jar 1lb  
1401 Russet 28 optic Rays Bowl 10 1/4" W  
1402 Russet Rolled Rim Bowl 11" W  
1403 Russet Flared Straight Sided Bowl 9 3/8" W  
1404 Russet Candy Jar 1lb  
1405 Russet Candy Jar 1/2lb  
1406 Fen. 643 topaz, 6 1/4" cupped salver  
1407 Fen.#643 Topaz,6 1/2"W Cupped Salver  
1408 Fen 643, Topaz, 7 3/8" flat salver  
1409 Fen 643, Wisteria, flat salver, NICE STRETCH  
1410 Fen 600, Wisteria 11"W Cupped Bowl,GREAT STRETCH  
1411 Fen. Wisteria, 4 3/4" W cupped bowl  
1412 Fen. Velva Rose, 7 1/2" W, 4 1/4" shoulder 3 7/8" Base Cupped Bowl  
1413 Fen. 449, Wisteria, 8 5/8" Pr. Candlesticks  
1414 Fen. 1562-2-14 Aquamarine, 13 1/4" Banana Boat Bowl, SCARCE, no under plate  
1415 Fen. 950, Aquamarine, Pr. candlesticks  
1416 Fen 857, Aquamarine, 10 1/2" W Fan, melon rib vase  
1417 Fen, 736, Aquamarine, 1 lbs. rib optic candy jar NO LID  
1418 Fen. 574, tangerine crimped, flared, vase  
1419 Fen 1533A, tangerine, Sq. Twin Dolphin Comport  
1420 Fen. 66, Topaz, Lemon Tray  
1421 Fen. 66, Lemon Tray w/decoration

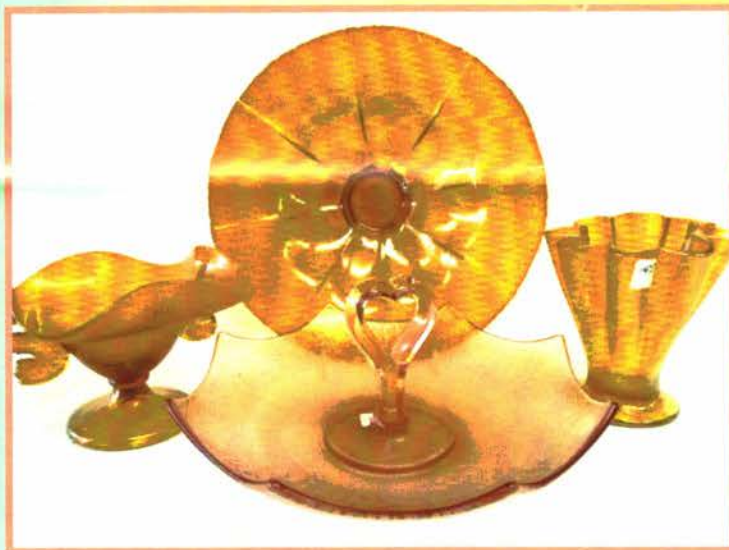
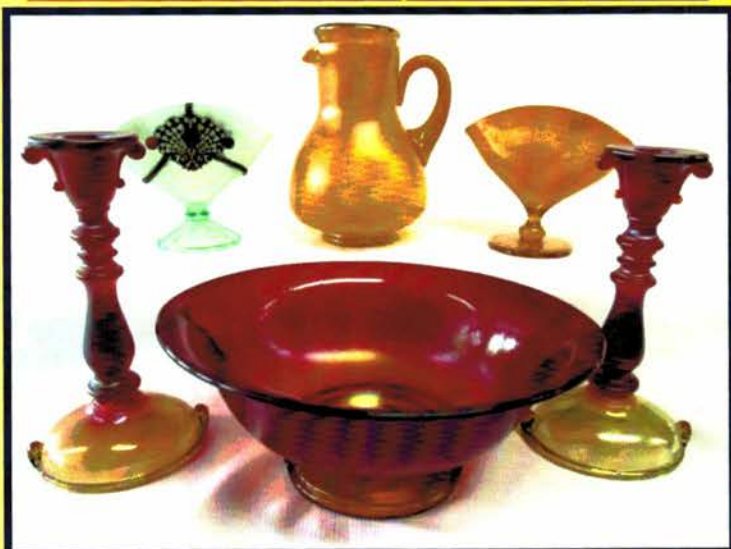
- 1422 Fen. 66, Florentine Green, Lemon Tray  
1423 Fenton 66, Celeste Blue, Lemon tray  
1424 Fen. 736, Florentine Green, 6" W., 5 1/4" H Fan, Optic, sm. w/ metal vase  
1425 Fen 1554, Velva Rose, Flower Pot, NO UNDER PLATE  
1426 Fen 643, Wisteria, Cupped Salver  
1427 Fen.923, Velva Rose, Octagon, Laurel Leaf Design, SCARCE, Mayo and under plate w/ladle, not iridized ladle.  
1428 Fen. 260, Velva Rose, wide flared comport  
1429 Fen. 260, Florentine Green, wide flared comport  
1430 Fen 1616, Velva Rose Diamond Optic, Basket w/handle  
1431 Fen. 643, Wisteria, Bonbon W/ lid  
1432 Fen 574 Celeste Blue, Flared, Crimped Vase  
1433 Fen 574, Florentine Green, Flared, crimped vase  
1434 Fen 574, topaz, Flared, Crimped Vase  
1435 Fen. 574, Velva Rose, flared, Crimped Vase  
1436 Fen 574, Persian Pearl, Flared, Crimped, Vase  
1437 Fen. #9, Florentine Green, 3/4 lb. Candy Jar, w/Grape Wheel Cutting  
1438 Fen 943, Celeste Blue, 1/2 lb. round Stem, Bonbon  
1439 Fen. 318, Celeste Blue, 6 1/2"W Butter Ball Tray  
1440 Fen. 318, Topaz, 6 1/2"W Butter Ball Tray  
1441 Fen 401, Velva Rose, 2 pc. Tumble Up Set  
1442 Fen 200, Velva Rose, 2 pc. Guess Set  
1443 Fen. 401, Celeste Blue, 2 pc. tumble up set  
1444 Fen. 200, Celeste, Blue, 2 pc. w/ Cobalt Handle Guest Set  
1445 Fen 200, Tangerine 2 pc. guess Set  
1446 Fen 743, Celeste Blue, Button Finial Puff Box  
1447 Fen 57, Celeste Blue, Nipple Finial, Puff Box  
1448 Tangerine Footed Wide Cupped w/ Ribs Bowl #231  
1449 Tangerine Rolled Rim (Flip) 9" Wide Bowl #647  
1450 Tangerine Rolled Rim (Flip) Bowl 11 3/4" W #647  
1451 Tangerine Special Rolled Rim Melon Rib Bowl 12"W #857  
1452 Tangerine Flared Melon Rib Bowl 11 1/2" #857  
1453 9pc Celeste Blue Lemonade Set w/Coasters  
1454 Fenton celeste blue sherbert & under plate w/ x tray under plate  
1455 Fenton wisteria sherbert & under plate w/ 8 3/4' & 7 1/2 " plates  
1456 Fenton topaz and florentine green sherberts  
1457 Fenton celeste blue 5 " w flared vase w/ crimped top  
1458 Fenton velva rose diamond optic octagon plate #1502  
1459 3 Fenton octagon plates #758 topaz #756 topaz #756 florentine green one money  
1460 3 Fenton #757 octagon laurel leaf plates 7 3/8" topaz- 7 1/2" celeste blue-7 3/4 " persian pearl one money  
1461 2 Fenton plates #630 florentine green 6 1/4 " florentine green one money  
1462 2 Fenton hp topaz plates lemons and floral very nice  
1463 2 Fenton celeste blue plates 5 1/4" & 8"  
1464 NW Topaz Wide Flared Bowl #648 GREAT STRETCH  
1465 NW Jade Blue Wide Flared Bowl #648 GREAT STRETCH  
1466 NW Blue Candlesticks Pr. 4 sided Tall #651 1 with nick  
1467 NW Blue Tall Twist Vase 9 1/2" #727  
1468 NW 8 Panel Nut Cup SCARCE  
1469 Fen. Topaz 9pc Lemonade Set w/ Cobalt Coasters without lid  
1470 Fen. Celeste Blue 6pc Water Set with Lid  
1471 Fen. Tangerine 6 Sided Vase SCARCE #835  
1472 Fen. Tangerine Rib Optic Fan Vase #570  
1473 Fen. Tangerine 1/2 lb Candy Jar #835  
1474 Fen. Tangerine Flared Vase, 6 1/4" H 6" W #612  
1475 Fen. Tangerine Melon Rib Vase, 4 3/4" W, 5 1/2" H #847  
1476 Fen. Tangerine Melon Rib Vase, 8 1/4" #857  
1477 Fen. Tangerine Melon Rib Fan Vase, 10 1/8" #857  
1478 Fen. Florentine Green Twin Dolphin Console 3pc Set  
1479 Fen Florentine Green Twin Dolphin Fan Vase #1532A  
1480 Fen Florentine Green Twin Dolphin Crimped Wide Bowl  
1481 Fen. Florentine Green Dolphin Handle Server  
1482 Fen. Celeste Blue Wide Flared Comport, #260  
1483 Fen. Velva Rose Diamond Optic Fan Vase #567  
1484 Fen. Velva Rose Twin Dolphin Vase #1532A  
1485 Fen. Velva Rose Twin Dolphin Comport #1532A  
1486 Fen. Velva Rose Rib Optic Flared Crimped Vase #573  
1487 Fen. Velva Rose Diamond Optic Candy Jar 1/2 lb. #568  
1488 Fen. Velva Rose Handled Lemon Tray HARD TO FIND #66  
1489 Fen. Velva Rose Twin Dolphin Candy Jar 3/4lb #1533A  
1490 Fen. Velva Rose Flared Rolled Rim Rib Optic Vase #573

Thanks for participating in todays auction. Please watch our website for upcoming auctions. Happy Holidays, Jim

#### AUCTION NOTES:

Beautiful Stretch Glass Collection of Jan Reichling. Colors include: Wisteria - Red-Purple - Topaz - Florentine Green - Celeste - Cobalt - Ice Colors - Russet - Tangerine - Smoke - and more! Over 500 pieces in 490 lots, all being offered on Saturday October 26th at 10:00 AM in ring 2. Come on over and enjoy the weekend, Jim

## Stretch Glass Collection 490 Lots Color everywhere!



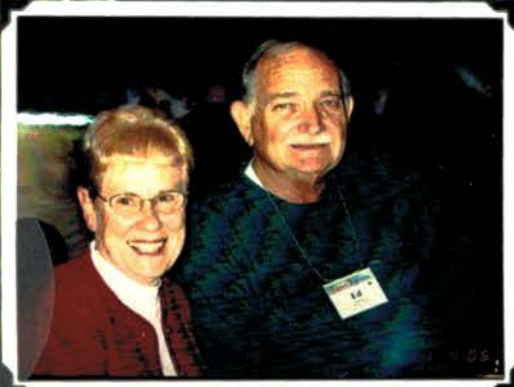
Jim Wroda Auctions  
2118 Magnolia Ave  
Ashville, New York 14710  
716.526.4230 NY Office  
937.548.7835 OH Office  
[www.jimwrodaauction.com](http://www.jimwrodaauction.com)

PRESORTED  
FIRST CLASS MAIL  
U.S. POSTAGE  
**PAID**  
CELINA, OH  
PERMIT NO. 99



**FIRST CLASS POSTAGE PAID**

16-22\*\*\*\*\*AUTO\*\*MIXED AADC 430  
LEE MARKLEY  
PO BOX 306  
502 N BROADWAY ST  
MENTONE IN 46539-9531



**Carnival Glass and Stretch Glass Auctions**  
Saturday, Oct. 26th, 2013 at 9:30 AM  
We will be auctioning the Carnival Glass Collection of  
Betty and the Late Ed Pierce in ring 1  
and The Stretch Glass collection of Jan Reichling of  
Schaumburg, IL in ring 2 at 10:00 AM

Greenville Auction Center - Greenville Ohio