

# CARNIVAL GLASS

## 2013 AUCTION

SATURDAY, SEPTEMBER 7  
9:30 A.M.

36



Senior Activity Center  
326 4th St NE  
Mason City, Iowa

118



390



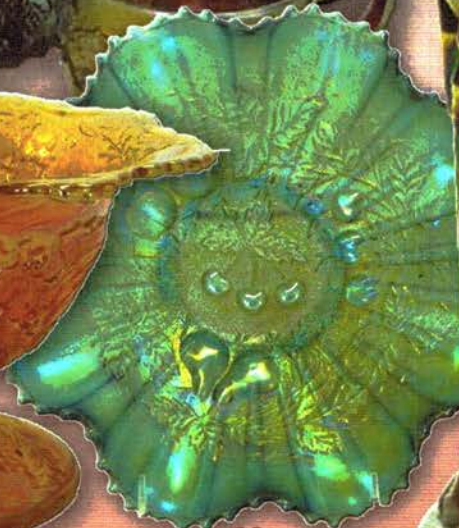
15



10



30



JIM & JAN SEECK

Seeck Auctions

641-424-1116

To view the complete auction, check our website at: [www.seeckauction.com](http://www.seeckauction.com)

JIM & JAN SEECK

# CARNIVAL GLASS AUCTION

641-424-1116

**Saturday, September 7— 9:30 AM**

**Preview: Friday, Sept. 6, 3 pm – 6 pm**

**Senior Activity Center — 326 4th St. NE — Mason City, Iowa**

**From South:** Take US Hwy 65 into Mason City and turn right or east on 4<sup>th</sup> ST NE, go two blocks. **From North:** Take US Hwy 65

into Mason City and turn left or east on 4<sup>th</sup> ST NE, go four blocks. **This is the large brown building on the west end of the block.**

## NO BUYER'S PREMIUM

**ABSENTEE BIDDING** is available on-line through Auction Flex using our online catalog at [www.seeckauction.com](http://www.seeckauction.com)

★ **Absentee bidding closes Fri., Sept. 6 at 6 p.m. CST**

Please email us and we will put you on our email mailing list for auction notices.

e-mail: [jimjan@seeckauction.com](mailto:jimjan@seeckauction.com)

**THE COLLECTION:** This auction is the *Krattiger Estate* out of Wisconsin. What a great old collection of glass! The Krattiger's collected for many, many years and bought a wide variety of pieces. We've handpicked this auction out of their collection

to make it very interesting. Lots of great color and iridescence along with some very rare pieces. We've put a section in that has some extremely rare items with damage. Also, we've added a variety of contemporary pieces. Should be a fun day!

### Lodging

**Mason City:** Holiday Inn Express (new) – (641)424-1200; Quality Inn – (641)423-4444; Country Inn & Suites – (641)423-1770; Super 8 – (641)423-8855; Historic Park Inn Hotel – (641)422-0015;

**Clear Lake:** AmericInn – (641)357-8954; Best Western Holiday Lodge (641)357-5253.

**Terms:** Cash or Check, VISA, MasterCard & Discover accepted w/proper ID. **4% Clerking Fee** on all purchases made using credit cards. Announcements made day of sale take precedence over any printed information.

## We have 3 options for absentee bidding for our live auctions:

1) **If you DO NOT have internet access, you can:** Call us by phone to enter your bids at (641)424-1116 **OR** by sending the numbers of the item(s) desired and the amount bid on each to: Seeck Auctions, PO Box 377, Mason City, Iowa 50402. We would prefer you call us with your bids rather than send them in a letter.) We will enter your bids into our online bidding system.

★ Have all written bids in by **Wed., Sept. 4.**

2) **Enter your bids from our website into our online catalog through the Auction Flex system.**

- ◆ **First-time bidders: Set up your account** by creating a user name and password and filling out basic information. You will also need to **register for the auction** which will ask you to enter a valid credit card number. This card will be validated by a one time only charge of \$1 charge to your card. **You will use this user name and password for all our auctions.**
- ◆ You are not required to pay by credit card if you are successful with your online bid. We will let you know what you owe us through an email and you can decide how you would like to pay us.
- ◆ An exciting advantage to online bidding is that you can be notified by email if you are outbid on an item, which lets you increase your bid in time, or bid on something else. **There is a cutoff date and time, for each auction, for entering your bids online.** ★ **Online absentee bidding for this auction closes Friday, Sept. 6 at 6 p.m. CST**
- ◆ Remember that just because you are the high bidder in the online catalog, this does not mean you have won the item. Your bid still needs to **beat** the floor bidders and live phone bidders. If your high bid lands with a floor bidder during the live auction, the floor bidder takes precedence. You might want to bid higher on a highly desired item for a better chance at winning its absentee bid.
- ◆ If you do not receive an item that sold for less than your bid, assume we canceled your bid because the item had a severe manufacture problem, damage, or was not listed correctly.

3) **Live phone bidding is available on pieces with an estimated sale price of \$500 or more.** ★ Contact us by the **Thursday before the auction, which is Sept. 5** We will need to know the lot# and the phone number that you can be reached at on the day of the auction. We also need your home phone number if different than the above number.

Please call with questions: 641-424-1116.

If you win an online bid you will be notified by phone or e-mail between one to three days after the auction.

There is a **\$7 handling charge for each successful bid, with shipping and insurance charges additional.**

**ONLINE BID INCREMENTS:** \$1 - \$100/\$5    \$100 - \$200/\$10    \$200 - \$700/\$25    \$700 - \$1,500/\$50  
\$1,500 - \$3,000/\$100    \$3,000+ Auctioneer's Discretion

1. Luster Rose 10" round bowl - smoke
2. Luster Rose 10" round bowl - amber
3. Inverted Strawberry 6 1/2" ruffled bowl - marigold
4. Graceful vase - marigold
5. Imperial Grape 6" plate - green
6. Imperial Grape 6" plate - marigold
7. Ripple 10 1/2" vase - purple - has 2 7/8" base
8. April Showers 12" vase - blue
9. April Showers 12" vase - marigold
10. **Christmas compote – marigold - dark & super, a beautiful one! look great in any collection**
11. Waterlily ftd ruffled master berry bowl – blue - nice
12. M'burg Grape Wreath Variant 8" round bowl - green - radium, pretty
13. **Pair of 12" Mary Gregory vases - marigold - these are really neat**
14. Grape & Cable 7" plate - purple - nice
15. **Loganberry vase - purple - super pretty example**
16. Loganberry vase – green - tiny open bubble on base
17. Dugan Cherries ruffled bowl – purple - nice
18. Dugan Cherries ruffled bowl - peach opal - nice
19. Stippled Fruits & Flowers 7" ruffled bowl - green - slight scratch on fruit, couple points have manufacture smooches
20. Ribbon Tie 3 in 1 edge bowl - blue - nice
21. **Rustic 16" funeral vase – white - super pretty, scarce**
22. **Rustic 18" funeral vase – amethyst - another beauty**
23. **Rustic 18" funeral vase – blue - very nice**
24. **Rustic 17" funeral vase- marigold- has fabulous pastel irid.!**
25. Peacock & Grape ruffled bowl - blue - radium type irid., hard to find radium
26. Peacock & Grape ruffled bowl - dark purple - almost black amethyst, can see light thru it
27. Chesterfield creamer & sugar – red
28. Persian Garden 11" ruffled bowl - peach opal - nice
29. Grape & Cable 6" plate - green
30. **Stippled Three Fruits ruffled bowl w/ribbed back - sapphire - fantastic irid., outstanding piece**
31. **Stippled Three Fruits ruffled bowl w/ribbed back - aqua opal - very scarce, highly desirable**
32. **Stippled Three Fruits ruffled bowl w/ribbed back - marigold - super pretty!**
33. **Four Flowers 6" plate - purple - scarce, nice**
34. Four Flowers 6" plate - peach opal
35. Maple Leaf 6 pc. water set - purple
36. **Sweetheart cracker jar – marigold - can't remember ever seeing another, minor roughness on inside rim of lid, super piece**
37. Vintage 7" plate - green - nice
38. Vintage 7" plate - blue - nice
39. Cosmos & Cane ruffled compote - honey amber - neat
40. Blackberry Spray ruffled hat shape - red - scarce
41. **Poppy Show 9" plate - blue - very scarce & nice**
42. **Poppy Show 9" plate - purple - very scarce color**
43. **Poppy Show 9" plate - marigold - super pretty w/lots of pink irid., minor nick on base**
44. N's Bushel Basket - aqua opal - nice example
45. N's Bushel Basket - marigold - dark
46. Captive Rose 3 in 1 edge bowl – amethyst - has chip on base that is iridized over
47. M'burg Holly Sprig Variant 8" IC shaped bowl - marigold - radium & fantastic
48. **Fashion 8 pc. punch set - smoke - extremely rare set, as pretty as I've seen, minor roughness on one point**
49. M'burg Fleur De Lis collar based ruffled bowl - amethyst - radium
50. M'burg Fleur De Lis collar based ruffled bowl - marigold - dark, pretty, satin
51. Peacock at the Fountain 7 pc. berry set - amethyst - scarce set
52. Long Thumbprint 5 3/4" JIP squatty vase - green - scarce
53. **Windmill milk pitcher - purple - very scarce & pretty**
54. Kittens ruffled dish - powder blue w/marigold overlay - has slight blue tint in base
55. Dragon & Lotus 3 in 1 edge bowl - peach opal - scarce, shallow chip on collar base
56. Scroll Embossed 9" ruffled bowl w/File back - smoke - pretty
57. Nautilus whimsy creamer - purple - nice
58. **Nippon 9" plate w/BW back - marigold - very rare plate, a dandy**
59. Grape & Cable 8 pc. berry set - purple - one berry w/chip in pattern
60. Pansy ruffled bowl - purple - super
61. Pansy ruffled bowl - green - silvery
62. Ftd Fine Rib 5 3/4" vase - blue
63. **Rose Show 9" plate - emerald green - rare color, highly desirable**
64. **Rose Show 9" plate - purple - rare color**
65. **Rose Show 9" plate - blue - has electric highlights, chip on base**
66. **Rose Show 9" plate – marigold - dark, nice**
67. Rose Show 9" plate - white - pretty, heat check in base
68. Ripple 9 1/2" vase – purple - has 3 3/8" base, nice
69. Flute & Cane lg size milk pitcher - marigold
70. **Curtain Optic 7 pc. water set - vaseline - has vaseline handle, very rare set & nice**
71. Sunflower spt ftd ruffled bowl - purple - super pretty irid.
72. **N's Grape & Cable lg size fruit bowl or orange bowl - white - super nice, very rare**
73. N's Grape & Cable lg size fruit bowl or orange bowl - purple- scarce
74. **Fenton's Grape & Cable lg size fruit bowl or orange bowl- marigold - this is a very rare shape for these, minor nick on one point**
75. Strawberry 9" plate w/BW back – lavender - rare color, nice
76. Strawberry 9" plate w/BW back - green
77. Strawberry 9" plate w/BW back - purple - nice
78. Strawberry 9" plate w/BW back - marigold
79. Wild Blackberry ruffled bowl – marigold - scarce pattern
80. **Stippled Peacocks 9" plate w/ribbed back - blue - has electric highlights, scarce, nice**
81. Dandelion mug - aqua opal - butterscotch, nice
82. Dandelion mug - marigold - nice
83. Westmoreland Smooth Rays ruffled bowl - blue opal - scarce bowl
84. Westmoreland Smooth Rays ruffled bowl - peach opal
85. **Poinsettia & Lattice ftd ruffled bowl w/ribbed back - marigold - scarce, nice**
86. Rib Optic water pitcher – vaseline - has cobalt handle
87. Rib Optic 6 pc. water set - celeste blue - has cobalt handles
88. **Heavy Grape chop plate - amber - nice**
89. Heavy Grape chop plate – green
90. **M'burg Hanging Cherries compote - marigold - radium & very nice, rare**

- \_\_\_ 91. Vintage 9" IC shaped bowl - green - super pretty, if this was Northwood, we'd call it emerald
- \_\_\_ 92. Vintage 9" IC shaped bowl - powder blue - pretty bowl
- \_\_\_ 93. M'burg Blackberry Wreath 3 in 1 edge sauce - green - radium, nice
- \_\_\_ 94. Birds & Cherries ruffled compote - amethyst - nice
- \_\_\_ 95. Grape & Cable banana boat - white - large chip on outside top edge
- \_\_\_ 96. Grape & Cable banana boat - purple - nice
- \_\_\_ 97. Grape & Cable banana boat - marigold
- \_\_\_ 98. Imperial Grape ruffled bowl - purple - pretty
- \_\_\_ 99. Imperial Grape ruffled bowl - marigold
- \_\_\_ **100. Grape & Cable 14 pc. master punch set - purple - very rare & highly desirable, a nice set**
- \_\_\_ 101. Cherry Chain IC shaped 7 pc. berry set - marigold
- \_\_\_ 102. Heavy Grape 8" plate - amber - scarce, nice
- \_\_\_ 103. Heavy Grape 8" plate - purple - pretty
- \_\_\_ 104. Heavy Grape 8" plate - green
- \_\_\_ 105. Lightening Flower hdd nappy - marigold - nice
- \_\_\_ **106. Butterfly bonbon w/ribbed back - green - rare, nice, minor pinpoint on base**
- \_\_\_ **107. Butterfly bonbon w/ribbed back - blue - electric & super**
- \_\_\_ 108. Ski Star dome ftd banana boat shaped, crimped edge bowl - peach opal
- \_\_\_ **109. Memphis 8 pc. fruit bowl set - purple - bowl is super, base has polished point, can be replaced easily**
- \_\_\_ 110. Scales 9" ruffled bowl - peach opal
- \_\_\_ 111. Heavy Grape deep round 6" berry bowl - purple
- \_\_\_ **112. Peacocks 9" plate w/plain back - green - scarce & nice**
- \_\_\_ 113. Holly 9" plate - amethyst - manufacture roughness on base, minor pinpoint on edge
- \_\_\_ 114. Holly 9" plate - blue - pretty!
- \_\_\_ 115. Holly 9" plate - marigold
- \_\_\_ 116. Holly 9" plate - light marigold or clambroth
- \_\_\_ **117. M'burg Multi Fruits & Flowers 6 pc. punch set - green - rare & highly desirable, these punch sets are super hard to find, one cup has chip on base**
- \_\_\_ **118. M'burg Multi Fruits & Flowers 8 pc. punch set - amethyst - very nice set & again, very rare**
- \_\_\_ **119. M'burg Multi Fruits & Flowers 6 pc. punch set - marigold - very nice & rare**
- \_\_\_ 120. Acanthus deep ruffled bowl - marigold - pastel & pretty
- \_\_\_ 121. M'burg Holly Whirl ruffled bowl - marigold - satin
- \_\_\_ 122. Thistle CRE bowl - marigold - radium finish, scarce
- \_\_\_ 123. M'burg Boutonniere ruffled compote - amethyst - radium
- \_\_\_ **124. Ski Star lg ruffled bowl - purple - fantastic!**
- \_\_\_ 125. Ski Star lg ruffled bowl - peach opal
- \_\_\_ 126. Bullseye & Beads 12" vase - marigold
- \_\_\_ 127. Flowers & Frames dome ftd ruffled bowl - peach opal
- \_\_\_ 128. Blackberry Spray 2 sides up hat - red - scarce
- \_\_\_ **129. N's Peacock at Urn master IC bowl - ice green - scarce, nice**
- \_\_\_ **130. N's Peacock at Urn master IC bowl - white - a nice one too**
- \_\_\_ **131. N's Peacock at Urn master IC bowl - purple - Wow!**
- \_\_\_ 132. N's Peacock at Urn IC sauce - ice green - silvery
- \_\_\_ 133. N's Peacock at Urn IC sauce - white
- \_\_\_ 134. N's Peacock at Urn IC sauce - purple - nice
- \_\_\_ 135. N's Peacock at Urn IC sauce - blue - electric
- \_\_\_ 136. N's Peacock at Urn IC sauce - marigold - is a sauce, some may call this a plate
- \_\_\_ **137. Smooth Panels 14 1/2" vase - red - has 4 7/16" base, just short of a funeral but still a large base, has 8" mouth**
- \_\_\_ 138. Apple Blossom Twigs low ruffled bowl - white - unusual mold, has very large points
- \_\_\_ 139. Grape & Cable breakfast set - green
- \_\_\_ 140. M'burg Fleur De Lis 3 in 1 edge dome ftd bowl - green - radium, couple of minor nicks on saw tooth base
- \_\_\_ 141. Stretch Glass 8" vase - ice green
- \_\_\_ **142. Good Luck ruffled bowl w/ribbed back - aqua opal - butterscotch, nice, rare bowl, has some bubbles in glass**
- \_\_\_ 143. Good Luck ruffled bowl w/ribbed back - blue - has electric highlights
- \_\_\_ 144. Good Luck ruffled bowl w/BW back - green
- \_\_\_ 145. Acorn Burrs 4 pc. table set - marigold - scarce
- \_\_\_ 146. M'burg Grape Wreath 3 in 1 edge 9" bowl - marigold - satin
- \_\_\_ **147. M'burg Rosalind 10" IC shaped bowl - green - satin, pretty & rare**
- \_\_\_ 148. M'burg Rays & Ribbons 3 in 1 edge bowl - marigold - radium
- \_\_\_ 149. Holly IC shaped bowl - amber - scarce color, nice
- \_\_\_ 150. Holly IC shaped bowl - blue
- \_\_\_ 151. Holly IC shaped bowl - marigold
- \_\_\_ **152. Roses & Ruffles GWTW lamp - marigold - super pretty, rare**
- \_\_\_ 153. Brooklyn Bridge 10 ruffled bowl - marigold scarce, nice
- \_\_\_ 154. Cherry Chain 10" ruffled bowl - blue
- \_\_\_ 155. Cherry Chain 10" ruffled bowl - marigold
- \_\_\_ 156. Five Hearts dome ftd flattened out dish - marigold - some may call this a plate
- \_\_\_ **157. Peacocks 9" plate w/ribbed back - ice blue - very scarce, nice**
- \_\_\_ 158. Peacocks 9" plate w/ribbed back - ice green - scarce
- \_\_\_ 159. Imperial Grape 7 pc. ruffled berry set - purple - super pretty set!
- \_\_\_ 160. M'burg Primrose ruffled bowl - amethyst - radium
- \_\_\_ 161. Nippon ruffled bowl w/BW back - purple
- \_\_\_ **162. Stretch Glass punch bowl & base - red - iridized on the inside only, super rare & nice**
- \_\_\_ 163. Big Basketweave 9" vase - white
- \_\_\_ **164. Apple Blossom Twigs 9" plate - blue - has "Souvenir Indiana Fair 1921"**
- \_\_\_ 165. Petal & Fan lg size ruffled bowl - purple
- \_\_\_ 166. Octagon 7 pc. small size water set - marigold
- \_\_\_ **167. N's Corn vase w/stalk base - ice green - has marigold overlay, nice**
- \_\_\_ **168. N's Corn vase w/stalk base - ice green - no overlay, pretty**
- \_\_\_ 169. N's Corn vase w/stalk base - white
- \_\_\_ **170. Stag & Holly lg size deep ruffled bowl - aqua - scarce color**
- \_\_\_ 171. Stag & Holly lg size deep ruffled bowl - marigold - super pretty
- \_\_\_ **172. Hearts & Flowers ruffled compote - green - very pretty & rare, very minor pinpoint on seam**
- \_\_\_ 173. Hearts & Flowers ruffled compote - blue - scarce
- \_\_\_ 174. Hearts & Flowers ruffled compote - white
- \_\_\_ 175. Good Luck PCE bowl w/ribbed back - marigold - nice
- \_\_\_ **176. Poppy Show ruffled bowl - lime green - very rare color, light on irid.**
- \_\_\_ **177. Poppy Show ruffled bowl - white - nice**
- \_\_\_ 178. Grape & Cable 7 pc. water set - marigold - nice
- \_\_\_ 179. Fruits & Flowers bonbon - blue - electric
- \_\_\_ **180. Peacock at the Fountain 8 pc. punch set - purple - scarce set, a dandy!**
- \_\_\_ 181. Leaf Chain 9" plate - white - pretty
- \_\_\_ 182. Leaf Chain 9" plate - light marigold or clambroth

183. **Holly goblet shaped compote - red - scarce**
184. Wishbone ftd ruffled bowl - green
185. **M'burg Tulip Scroll 6 1/4" vase- amethyst- radium & super!**
186. Scroll Embossed 9" plate - purple - pretty
187. Scroll Embossed 9" plate - green
188. **Memphis 10 pc. punch set - marigold - very pretty, scarce**
189. Horse Medallion rose bowl - marigold
190. **M'burg Whirling Leaves tri-cornered crimped edge bowl - green - radium & fantastic, rare shape**
191. **Smooth Panels 8" vase - red - has 3 3/4" base, scarce, nice**
192. Smooth Panels 8 1/2" vase - aqua marine - has 3 3/4" base
193. Smooth Panels 9 1/2" vase - white - has 3 3/4" base
194. Opalescent Stripe water pitcher w/blue handle - not Carnival Glass
195. **Luster Rose ftd fruit bowl - purple - this thing is a super dooper! Incredible irid. inside and out, has irid. spot inside bowl**
196. Nippon PCE bowl w/BW back - ice blue
197. Nippon PCE bowl w/BW back - white - pretty
198. Lattice & Grape 7 pc. tankard water set - blue - nice, two tumblers w/damage
- \* The next 33 lots are pieces with damage, some extremely rare \**
199. Grape Arbor tankard water pitcher & tumbler - white - pitcher has one grape missing (a hole)in the side
200. Persian Medallion 9" plate - green - extremely rare plate, less than a handful known, minor nick on edge
201. Vintage ruffled bowl - Persian blue - chip on edge
202. Farmyard ruffled bowl - purple - super pretty example, has small chip in inside edge
203. Luster Rose ftd fruit bowl - red - rare, large piece broke out and glued back in
204. M'burg Rose Columns vase - amethyst - super pretty example of this rare vase, has 1" by 1" piece of ruffle glued back in
205. Imperial paperweight - purple - very pretty, cracked
206. Acorn Burrs 8 pc. punch set - ice blue - cups & base are perfect, top has three points broken off
207. Octagon small size water pitcher - purple - rare & super pretty, large chip out of base
208. Diamond Rib jardinière - blue - super pretty w/electric irid., has two large bursts on base, still fantastic, not many to choose from
209. Pony ruffled bowl - ice green - chips on edge
210. Peter Rabbit 9" plate -marigold -pretty, rare, large chip on edge
211. Fenton Grape & Cable turned in centerpiece bowl - blue - rare, cracked
212. Windmill ruffled bowl -purple -super pretty, large chip on edge
213. Grape & Cable 14 pc. master punch set - marigold - rare set, base & cups all good, one point polished off
214. Shell 9" plate - marigold - super pretty, one point chipped off
215. Peacock at the Fountain round shaped 8 pc. punch set - white-very pretty set, rare, large chip on back edge of point, base & cups are good
216. M'burg Nesting Swan ruffled bowl - marigold - radium, super, large polished spot on edge
217. Fashion water pitcher - purple - super pretty, crack in side of pitcher
218. Raspberry ftd ruffled candy dish - ice blue - chips on feet
219. Memphis 8 pc. punch set - white - super pretty rare set, large chip on bowl point and cracked, base and cups are good
220. Dandelion tankard water pitcher & one tumbler - purple - peeling on side of lip of pitcher
221. Holly 9" plate - white - fantastic, as nice as these get, large chip on edge
222. Concave Diamonds 10 pc. water set - celeste blue - lid, tumblers & coasters are perfect, pitcher is cracked
223. Town pump - purple - missing spout
224. Grape & Cable water pitcher & 2 tumblers - purple - part of spout missing
225. Floral & Optic ftd cake plate - red - very rare, one foot badly chipped
226. Grape Arbor 5 pc. tankard water set - marigold - crack around handle of pitcher, one tumbler has nick
227. Ten Mums 3 in 1 edge bowl - amethyst - super, chips & repair on edge
228. Butterfly & Berry 7 pc. water set - blue - part of spout missing, tumblers are good
229. Fenton's Flowers rose bowl - red - minor nick on foot, one point on top missing
230. Grape Arbor tankard 5 pc. water set- marigold-pitcher cracked
231. Many Fruits 8 pc. punch set - marigold - pretty, large chip on outside of bowl, base & cups are good
- \*\* Return to regular lots \*\***
232. **Persian Garden lg IC shaped bowl - purple - fantastic, a beauty**
233. Persian Garden lg IC shaped bowl - white - nice
234. Persian Garden IC shaped sauce - white
235. **Dozen Roses deep round ftd bowl - amethyst - very scarce**
236. Puzzle bonbon - white - nice
237. Peacocks ruffled bowl w/ribbed back - ice green - pretty example
238. Windflower 9" plate - marigold - nice
239. **N's Peacock at the Fountain 5 pc. water set - purple - pitcher nice, two tumblers w/nicks**
240. Stippled Three Fruits 9" plate w/ribbed back - marigold - minor scratches on fruit
241. Three Fruits 9" plate w/plain back - green - pretty
242. Three Fruits 9" plate w/plain back - purple
243. **Holly 3 in 1 edge bowl - marigold on moonstone - super rare bowl & nice!**
244. Holly 3 in 1 edge bowl - teal green - very dark, odd color, nice
245. **Victorian lg ruffled bowl - purple - scarce**
246. Large bulbous 13" vase w/red & blue stained flowers - marigold
247. Four Flowers 10" IC shaped bowl - peach opal - nice
248. **Peacock & Grape 9" plate -marigold - super pretty, scarce**
249. Apple Blossom Twigs banana boat shaped dish - peach opal - scarce shape
250. Good Luck 9" plate w/BW back - purple - always in demand
251. Wishbone & Spades 6" plate - purple - gold irid.
252. Thistle ftd banana boat shaped bowl - blue
253. **Embroidered Mums ruffled bowl w/ribbed back - marigold - scarce, nice**
254. Chrysanthemum lg size ftd IC shaped bowl - blue
255. Chrysanthemum lg size ftd IC shaped bowl - marigold
256. Holly ruffled hatshape - red - nice
257. Smooth Rays w/Jeweled Heart exterior lg ruffled bowl - peach opal
258. **Shell 9" plate - smoke - super pretty & very scarce**
259. Wreathed Cherry 5 pc. banana boat shaped berry set - white w/red cherries - one sauce has chip on base
260. Wreathed Cherry 5 pc. banana boat shaped berry set - marigold - super pretty, flake on top edge of master bowl
261. Drapery rose bowl - aqua opal

262. M'burg Holly Sprig crimped edge sauce – marigold - radium & super
263. **M'burg Strawberry Wreath crimped edge 10" ruffled bowl - green - radium, nice, rare**
264. Fanciful ruffled bowl - peach opal
265. Fanciful ruffled bowl - white - pretty
266. **Grape & Cable 6 pc. punch set - purple - highly desirable**
267. Fenton Peacock at Urn IC shaped bowl - white
268. Vintage 10" 3 in 1 edge bowl - blue - nice
269. **Stippled Strawberry ruffled bowl w/ribbed back - lime green - rare color, highly desirable**
270. **Stag & Holly lg size IC shaped bowl - amber - rare color, pretty**
271. Stag & Holly lg size IC shaped bowl - blue - nice
272. **Windmill dresser tray – purple - scarce, nice**
273. Open Rose 9" plate - pastel marigold - pretty irid.
274. Autumn Acorn CRE bowl - green - nice
275. **Little Flowers 3 in 1 edge 10" low bowl – amberina - very pretty look to this rare piece**
276. **Diamond Points 10" vase - ice green - scarce, nice**
277. **Diamond Points 11" vase - ice blue - scarce, nice**
278. Diamond Points 10" vase - blue - electric highlights
279. Diamond Points 10" vase - purple
280. **N's Peacock at Urn lg ruffled bowl – marigold - very scarce bowl & pretty**
281. Raspberry 6 pc. water set – purple - scarce set
282. Stag & Holly giant rose bowl - marigold - scarce, nice
283. Acorn IC shaped bowl - red - scarce
284. Acorn IC shaped bowl - aqua - pretty
285. **Open Rose centerpiece ftd bowl - purple - super pretty**
286. **M'burg Peacock at Urn IC shaped bowl - green - satin, scarce**
287. Fenton's Flute 9" vase – red - slight filing on top edge
288. Six Petals tri-cornered bowl – purple - super
289. Stippled Grape & Cable Variant 9" plate w/ribbed back - green - scarce
290. **Wide Panel 14 1/2" chop plate - red stretch - neat**
291. **Wide Panel 12" chop plate - red stretch - not as stretchy as the previous**
292. Fanciful IC shaped bowl - peach opal - pretty
293. Acanthus chop plate - smoke
294. Floral & Grape water pitcher – blue - nice
295. Horse Medallion 7" plate - marigold- nice
296. **Strawberry PCE bowl w/plain back - smoke - rare color, a dandy**
297. Strawberry PCE bowl w/plain back - green - fantastic
298. Strawberry PCE bowl w/BW back – marigold - nice
299. M'burg Hanging Cherries 10" IC shaped bowl- green- satin, nice
300. M'burg Hanging Cherries 10" IC shaped bowl - marigold - satin, also nice
301. M'burg Peacock /Urn master berry bowl- marigold -satin, scarce
302. **Acorn Burrs 8 pc. punch set - purple - nice set**
303. Hale Bath, Hot Springs 9" vase - light marigold - scarce
304. Wide Panel 7 1/2" round bowl - red stretch
305. Leaf & Beads rose bowl - aqua opal - butterscotch, nice
306. M'burg Fleur De Lis collar based 10" IC shaped bowl - amethyst - radium, pretty
307. Three Fruits Medallion spt ftd ruffled bowl - amethyst - has red irid.
308. Pillow & Sunburst 8" plate – aqua - scarce piece
309. M'burg Grape Wreath Variant 8" 3 in1 edge bowl - marigold- radium, nice
310. **Rose Show Variant 9" plate - renninger blue - very scarce, highly desirable**
311. Scroll Embossed deep ruffled bowl – clambroth - pretty irid.
312. Fenton's Grape & Cable fruit bowl w/Persian Medallion interior - marigold
313. Apple Blossom Twigs low ruffled bowl w/smooth edge - purple
314. **Birds & Cherries 10" IC shaped bowl – blue - very rare bowl & highly desirable, have not sold one of these for a long time**
315. Fenton's Peacock at Urn 9" plate – white - nice
316. Fenton's Peacock at Urn 9" plate - marigold
317. Enameled Cherries & Little Flowers 7 pc. water set - blue - tumblers have red cherries, two tumblers w/chips
318. **Stippled Grape & Cable Variant ruffled bowl w/ribbed back- sapphire - very scarce bowl & highly desirable, nice**
319. Stippled Rays deep round 6" bowl - red - looks red from a distance, a nice one!
320. Diamond & Sunburst 7 pc. wine set - marigold
321. M'burg Peacock at Urn 10" ruffled bowl – marigold - satin - pinpoint on edge
322. **N's Thin Rib 14" mid-size vase – purple - super pretty**
323. Carolina Dogwood round bowl - marigold on milk glass
324. Orange Tree hatpin holder – marigold - normal nicks on feet
325. M'burg Cherries 9" IC shaped bowl - green - radium
326. **Stag & Holly ftd chop plate - marigold - dark, nice, scarce**
327. Holly ruffled hatshape - red - nice
328. M'burg Holly Whirl 9" ruffled bowl – marigold - radium
329. Fishscale & Beads 7" plate - marigold
330. **M'burg Rays & Ribbons deep round bowl – amethyst - radium & super, called the blank shape**
331. Knotted Beads crimped edge 9 1/2" vase - aqua - rare color, a dandy vase
332. Scroll Embossed lg size ruffled compote - purple - super
333. Scroll Embossed lg size ruffled compote - marigold - nice
334. Pinecone 7" plate - blue - scarce size
335. Leaf & Beads rose bowl – blue
336. Leaf & Beads rose bowl - green - has Sunflower interior
337. Concave Flute 8" vase - amethyst - nice
338. **Grape & Cable 7" ruffled bowl w/BW back - ice blue - rare bowl, highly desirable**
339. M'burg Blackberry Wreath IC shaped sauce - marigold - radium
340. Fenton's Fine Rib 9" vase - red - nice, has neat red streaks
341. Fenton's Fine Rib 10" vase - aqua - nice
342. **Grapevine Lattice 7" plate – purple - fantastic!!**
343. Grape & Cable butter dish - green - nice
344. Scroll Embossed ruffled sauce w/File back – purple - pretty
345. Grape & Cable hatpin holder - purple
346. N's Thin Rib 10" vase - ice green
347. M'burg Nesting Swan ruffled bowl – amethyst - satin
348. **Ftd Orange Tree 5 pc. water set - blue - pitcher perfect, couple tumblers w/rough spots**
349. **Captive Rose 9" plate - marigold - very pretty example**
350. **M'burg Peacock IC sauce – green - radium, scarce & nice**
351. **Tornado lg size vase - green - scarce, nice**
352. Poinsettia milk pitcher - smoke - pretty
353. Poinsettia milk pitcher - marigold
354. Holly rose bowl - blue - scarce, irid. is missing slightly on the inside

355. M'burg Bullseye & Loop 7" vase- amethyst -radium, rare
356. Two sides up 5 1/2" vase - red stretch - has polished pontel
357. Two sides up 4 1/2" vase - red stretch - has polished pontel
358. Two sides up 4" vase - red stretch - has polished pontel
359. Eat Paradise Sodas 6" advertising plate - amethyst - nice
360. Enameled Lotus 5 pc. water set - marigold
361. Stippled Peacocks IC sauce - blue
362. Hearts & Flowers ruffled bowl w/ribbed back - white - nice
363. Wide Panel epergne - marigold - scarce & very nice
364. Butterfly & Berry 7 pc. round berry set - marigold
365. Large bowl & pitcher set - marigold - this is different, one of the few I've seen
366. Daisy Wreath ruffled bowl - blue opal - nice
367. Circle Scroll 6 1/2" vase - purple - outstanding irid. on this cute little vase!
368. Orange Tree loving cup - blue
369. Vintage small size epergne - green - nice
370. Wide Panel deep round 9 3/4" bowl- red stretch- unusual shape
371. Peacock 9" plate w/BW back - white - super
372. Vintage fernery - green - pretty
373. Vintage fernery - blue
374. Vintage fernery - marigold
375. Tree Trunk 14" mid-size vase - marigold - scarce, nice
376. Feathered Serpent 3 in 1 edge bowl - amethyst
377. Fashion punch cup - red - haven't sold one of these forever, extremely rare
378. Acorn ruffled bowl - peach opal
379. Orange Tree Orchard 5 pc. water set -blue -nice set, scarce
380. Grape & Cable Variant 9" plate w/BW back - purple
381. Grape & Cable Variant 9" plate w/plain back - marigold
382. Birds & Cherries card tray shaped bonbon - green
383. Heart & Vine 9" plate - blue - super pretty!
384. Heavy Grape ruffled master berry bowl - purple - pretty
385. Orange Tree IC shaped bowl - white - nice
386. Orange Tree w/trunk IC shaped bowl - marigold - pretty
387. Stippled Basket of Roses bonbon - purple - pretty, very scarce bonbon
388. Butterfly & Berry 4 pc. table set - marigold
389. Dragon & Lotus ruffled bowl - amber - scarce, nice
390. M'burg Ohio Star vase - amethyst - radium, pretty, this is a nice example, rare
391. Butterfly bonbon w/plain back - green - nice
392. M'burg Peacock master berry bowl - green - super pretty, rare
393. M'burg Peacock 7 pc. berry set - amethyst - rare set, minor nick on base of master, one sauce has chip
394. M'burg Peacock 7 pc. berry set - marigold - radium, nice, great set
395. Spector's Department Store Heart & Vine 9" plate - marigold - very scarce, nice
396. M'burg Peacock IC sauce - amethyst - satin, nice
397. Broken Arches 13 pc. punch set - purple - super pretty set & rare
398. M'burg Holly Sprig 8" IC shaped bowl - amethyst - radium & fantastic!
399. Apple Blossom Twigs 3 in 1 edge bowl - peach opal - nice
400. M'burg Vintage IC shaped bowl w/Hobnail back - marigold - satin, pretty, has manufacture spot off edge
401. Unusual Hobstar 10 pc. punch set - purple - contemporary
402. Cactus 7 pc. water set - aqua opal - rare, contemporary
403. Regal Iris GWTW lamp - aqua opal - contemporary, I believe there were not many of these made
404. Imperial Grape 10 pc. punch set - ice blue - marked IG, contemporary
405. Robin 7 pc. water set - ice blue - marked IG, contemporary
406. God & Home 7 pc. water set - red - contemporary
407. Rams Head bowl - cobalt blue - marked IG, contemporary
408. Heavy Iris 6 pc. tankard water set - purple - contemporary
409. Poppy GWTW lamp - red - contemporary
410. Poppy GWTW lamp - purple - contemporary
411. Poppy Show vase w/turned in top whimsy vase - white - unmarked, contemporary
412. Ball & Swirl 7 pc. water set - red - contemporary, Levay
413. Footed vase, 9" - cobalt - marked IG, contemporary
414. 1974 Good Luck HOACGA 7pc. water set - red
415. Atlantis vase - peach opal - Fenton, contemporary
416. Grape 14 pc. tulip top punch set - purple - contemporary, marked on bottom "S" in circle
417. Hobnail 3 lily epergne - aqua opal - Fenton, contemporary
418. Imperial Grape 5 pc. water set - marigold - tall tumblers, contemporary, marked IG
419. Checkerboard 7 pc. lemonade set - blue opal - signed Westmoreland, contemporary
420. Tiara 7 pc. water set - green - Indiana glass, contemporary
421. Town pump & trough - blue opal - signed Terry Crider, contemporary
422. High Hob water pitcher & 1 tumbler - green opal - Westmoreland, contemporary
423. High Hob 7 pc. water set - blue opal - Westmoreland, contemporary
424. Three Swan vase - blue - marked IG, contemporary
425. Butterfly & Berry whimsy spittoon - aqua opal - made from tumbler, signed Fenton, contemporary
426. 1992 ICGA fld whimsy Lion's plate - green
427. Heirloom butter dish, creamer & spooner - red - Indiana Glass, contemporary
428. Tiger Lily 7 pc. water set - white - marked IG
429. Eagle kerosene lamp - cobalt blue - Smith, contemporary
430. Water set, 7 pc. - smoke opal - marked with "S" in a circle, contemporary
431. Homestead chop plates - marigold, pink, ice blue, smoke & white - marked IG, all to go
432. Paneled Grape 11" basket - blue opal - Westmoreland, contemporary
433. Sunflower 6" vase - red - marked IG, contemporary
434. Cactus basket - aqua opal - Fenton, contemporary
435. Open Rose chop plates - ice blue, marigold, smoke, and marigold on milk glass - marked IG, contemporary, all to go

**At end of auction, we will have several box lots of glass, many with some damage.**

Seeck Auctions  
 PO Box 377  
 Mason City, Iowa  
 50402

PRESORTED  
 FIRST CLASS MAIL  
 US POSTAGE  
 PAID  
 MAIL EXPEDITORS



2013 Auction  
 Carnival Glass  
 Sat., Sept. 7  
 9:30 a.m.  
 Mason City, Iowa

T4 P1 197  
 LEE MARKLEY  
 BOX 306  
 MENTONE IN 46539-0306

