

# WWWCGA Carnival Glass Auction Schedule

## ALL open to the public at NO CHARGE!

Here is the 3 day Auction schedule-  
Complete Schedule for the entire weekend is on bottom of the mailing page.  
Come over and Spend the week with us!

### Thursday, Aug. 29th 2013 at 8:00 PM Ladies Night Out Auction

This auction will have but not limited to: Victorian Beaded purses; Carnival Glass Elegant Epergnes; Carnival Glass jewelry; Celluloid boxes; Sterling jewelry; Costume Jewelry; Beaded outfits; several good hatpins; Hatpin holders; mesh purses and more! Approx. 175 lots! And we will have fun!!

### Friday Aug. 30th 2013 at 4:00 PM Fenton and Contemporary Glass Auction

WOW!! MANY RARE and exciting pieces for you including several good Gibson Iris water sets; Robert Hansen Items; LeVay; Fenton; Family Signature pieces; Westmoreland; Imperial Glass. Several OOK items and colors. Approx 200 Lots for this auction!

### Saturday, Aug. 31st 2013 at 9:30 AM Helen Hamilton collection of quality Carnival Glass

With and early bird auction at 8:45 AM Doors open at 7:45 AM

This auction is primarily the Helen Hamilton Collection of Grantville, WV. Helen and Grace Rinehart traveled many many miles together for glass and attended several conventions in the day.. She a very nice selection of glass for you to bid on without reserve or minimums. Water sets; berry sets- punch sets- vases- chop plates- bowls- plates etc.. Makers such as Northwood- Millersburg- Dugan- Fenton- Imperial and others. Colors include Aqua Opal- Ice Blue- Ice Green- Blue- Green- Vaseline- Purple- Marigold- White- Powder Blue Opal- Lime Green- Stretch- Red- and other nice colors. Just a real solid auction.

#### \*\*\*\*\*Mail, E-Mail, Phone and Absentee Bids Policy:\*\*\*\*\*

Absentee Bidding: Absentee bidding is available via our "Auction Flex" bidding system. You may also email us, or mail your absentee bids. You can also do "live phone" bids. Just give us a call at 937-548.7835 or 716.526.4230 to set up your item schedule. Remember, call early as we have 2 lines available per item. There is a \$7.00, per successful bid, convenience fee. Items will be shipped within 5 days after payment is received. We reserve the right to cancel ANY bid for ANY reason. We will cancel all bids on an item if damage is found during the auction. If you do not hear from us by Tuesday following week, you did not win.

**Terms & Conditions:** Cash, Travelers checks, business or personal checks w/I.D. Visa/ MC & Discover with a 3% clerking fee. *No buyer premium on any of these auctions*

*We reserve the right to withdraw any damaged item from the auction before the bidding starts.*

### Jim Wroda Auctions

2118 Magnolia Ave, Ashville, NY 14710  
5239 ST RT 49 S. Greenville, Ohio 45331

716.526.4239 NY office  
937-548.7835 OH Office

Email us: [office@jimwrodauction.com](mailto:office@jimwrodauction.com)

Visit our website site for full weekend coverage at  
[www.jimwrodauction.com](http://www.jimwrodauction.com)



Thursday, August 29<sup>th</sup> 2013 at 8:00 PM

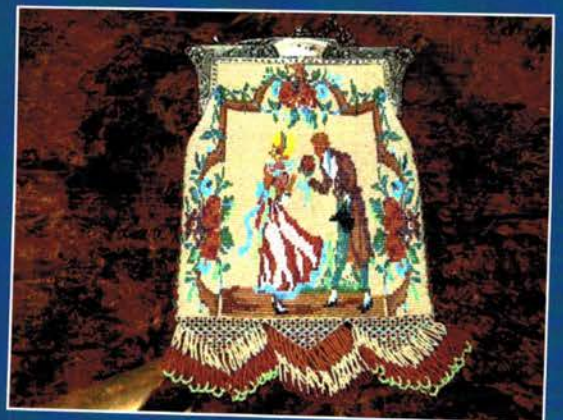
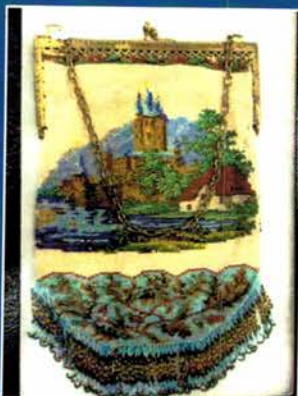


"Ladies Night Out Auction"

Lake Chautauqua Auction Center, Ashville, New York



Approx 175 lots of Quality and fun items including MANY one of a kind pieces of handmade jewelry!





Thursday, August 29<sup>th</sup> 2013 at 8:00 PM

"Ladies Night Out Auction"

Lake Chautauqua Auction Center, Ashville, New York



Full listing for this and all auctions available on our website

*Kelsey Murphy*  
*Cameo Glass*

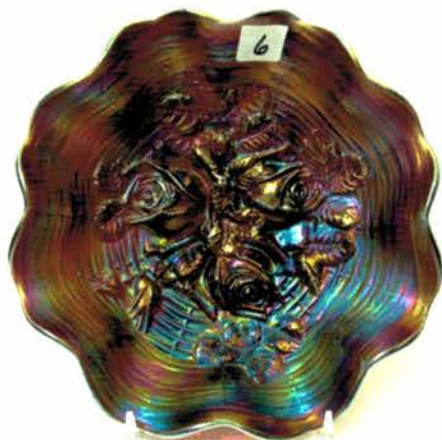


Friday, August 30th 2013 Fenton Glass Auction at 4:00pm  
Lake Chautaugua Auction Center, Ashville New York



**Saturday, August 31, 2013 WWW.CGA CARNIVAL LISTING 9:30 AM**  
**Don't forget-- Early Bird Auction Saturday at 8:45 AM of Un-Cataloged Carnival Glass!!**  
**You will only know what is to be sold if you are here!**

- 1 N 9" elec. blue Embroidered Mums bowl. Sharp!
- 2 N 9" marigold Embroidered Mums bowl.
- 3 N 8" IG Rose Show bowl. Nice pastel!
- 4 N 8" mari. Rose Show bowl. Nice pastel!
- 5 N 8" AO Rose Show bowl. Pretty!
- 6 N 8" purple Rose Show bowl w/electric highlights

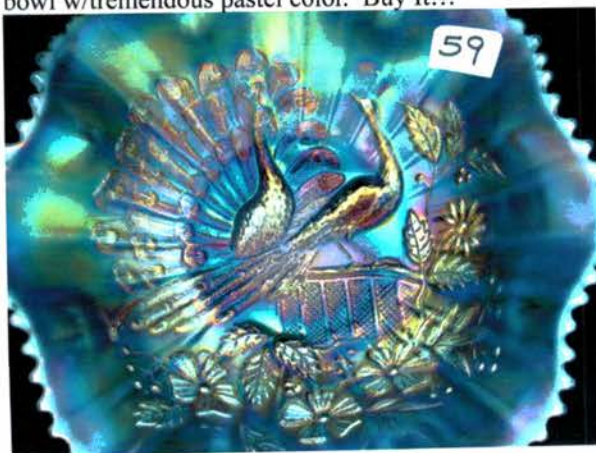


- 7 Dugan PO Raindrops 3/1 edge bowl
- 8 Dugan PO Smooth Rays ruffled bowl
- 9 2-purple Singing Birds mugs
- 10 N mari. Round Bushel Basket
- 11 N IG Round Bushel Basket
- 12 3-irid. toothpicks.
- 13 green Two Fruits divided bon bon
- 14 N 9" purple Good Luck PCE bowl
- 15 N 9" elec. blue Good Luck PCE bowl
- 16 2-mari. Lustre Rose bowls-round & ruffled
- 17 N 9" mari. Smooth Rays ruffled bowl
- 18 N AO Heart & Flower ruffled compote
- 19 N pastel AO Heart & Flower compote
- 20 N pastel IB Heart & Flower compote
- 21 N black amy. Heart & Flower compote
- 22 N black amy. Heart & Flower compote
- 23 N 9" green Peacocks PCE bowl
- 24 N 9" elec. blue Peacocks PCE bowl. Super!
- 25 Fenton 9" mari. Cherry Chain ruffled bowl
- 26 Fenton 9" mari. Cherry Chain 3/1 edge bowl
- 27 Fenton 8" purple Heart & Vine CRE bowl.
- 28 Dugan PO Ski Star 9" bowl
- 29 mari. Butterflies bon bon
- 30 Fenton 8" purple Captive Rose ruffled bowl
- 31 celeste blue Stretch centerpiece bowl
- 32 Frolicking Bears PO spittoon
- 33 mari. Sowerby hen on nest
- 34 mari. Open Rose plate
- 35 mari. Open Rose fruit bowl
- 36 Imp. Grape smoke wine decanter

- 37 Dugan white Grape Delight rosebowl
- 38 Cont. mari. Pony plate
- 39 mari. Grape Leaves ruffled bowl
- 40 mari. Dragon & Lotus 8-ruffled bowl
- 41 mari. Dragon & Lotus 8-ruffled bowl
- 42 mari. Sailboats wine
- 43 mari. Wreath of Roses bon bon
- 44 N-wood green Fruits & Flowers footed ruffled bowl
- 45 2-pastel mari. Ripple vases
- 46 group of 4-tumblers (474, Imp. Grape, Butterfly & Berry & Peacock at Fountain). One money
- 47 N 7" purple Fruit & Flower ruffled bowl
- 48 Fenton 6" mari. Stippled Rays plate
- 49 Fenton 6" green Peacock Tail round bowl
- 50 Fenton 8" green Peacock Tail 3/1 edge bowl
- 51 Fenton 8" green Captive Rose ICS bowl
- 52 mari. 5" Grape bowl
- 53 Cont. mari. vase
- 54 Fenton white Orange Tree ruffled bowl
- 55 Fenton Cont. purple midsize vase
- 56 1997 Batavia NY ACGA Conv. souvenir
- 57 Very Rare Imp. Grape emerald green Water pitcher. Fantastic!!



- 58 Fenton 19" purple Rustic funeral vase w/plunger base. Rare & Super Pretty!
- 59 Super Rare N-wood powder blue opal Peacocks ruffled bowl w/tremendous pastel color. Buy It!!!



- 60 Dugan 10" elec. purple Wishbone & Spades chop plate. One of the best!



- 61 Dugan 12" elec. purple Garden Path Vt. chop plate. Another beautiful plate!



- 62 Imp. elec. purple Chrysanthemum chop plate. Beautiful color. Small no-harm chip on color base.
- 63 4-green Oriental Poppy tumblers
- 64 set of 6 blue Blackberry Block tumblers
- 65 Dugan white Constellation compote
- 66 N dark mari. Banded G & C hatpin holder. small flake on bottom of foot
- 67 Mburg 7" green Holly Whirl deep flared bowl. Fantastic blue irid.
- 68 Mburg crystal 9" Hobstar & Feather frosted relish dish
- 69 N 9" pastel mari. Three Fruits ruffled bowl. Beautiful.
- 70 N pastel mari. Memphis 8 pc. fruit set. Outstanding blue & pink irid.!!! Long straw mark inside of bowl. NOT DAMAGE. Just mentioning! Color is SUPER!
- 71 Poshinger 7" red Stretch ruffled vase. Great color!
- 72 Fenton blue Orange Tree 8pc punch set. Scarce.
- 73 Imp mari 9" Open Rose plate
- 74 Mburg purple Holly Sprig Bon Bon
- 75 Nwood white Daisy & Drape vase
- 76 Nwood 7" green G&C HG Plate Nice
- 77 Nwood G&C elec. purple breakfast sugar
- 78 Nwood purple Raspberry gravy
- 79 Nwood mari G&C hatpin holder
- 80 Imp mari Poinsettia Pitcher
- 81 Nwood Mari G&C 8 pc. punch set

- 82 Fen 18" DARK Mari Rustic funeral vase. Real Dark example!
- 83 Fen 19" mari Rustic funeral vase. Nice!
- 84 Nwood purple Greek Key water pitcher. RARE
- 85 Imp mari Zipper Loop oil lamp- 4.75" base
- 86 Imp mari Zipper Loop finger lamp 4" base
- 87 Imp dark mari Zipper Loop finger lamp- 4" base
- 88 Imp Smoke Zipper Loop oil lamp. 5" base
- 89 RARE Mburg purple Wild Rose oil lamp. Not many around. Always a must for Mburg collection!



- 90 Mari oil lamp
- 91 Fen 9" blue Heart & Vine plate
- 92 Nwood 10" IG Peacock at Urn MIC bowl- Scarce
- 93 Nwood 10" mari Peacock at Urn MIC bowl- Scarce
- 94 Mburg 10" purple Peacock at Urn MIC bowl Nice
- 95 Nwood 10" purple Peacock at Urn MIC bowl
- 96 Fen 9" white Orange Tree plate.
- 97 Dugan 8.5" purple Apple Blossom twigs plate
- 98 Nwood 9" green G&C Spatula ftd plate. Stretchy
- 99 Nwood 9" mari G&C spatula ftd plate. NICE
- 100 Mburg 10" mari Peacock at Urn ruffled bowl
- 101 Nwood 9" mari Peacocks plate. Bright
- 102 Fen. 9" green Leaf Chain plate
- 103 Imp 8.5" elect purple Scroll Embossed plate. HOT HOT HOT!!
- 104 Nwood 9" purple Strawberry plate w/ BW back
- 105 Fen mari Kittens ruffled bowl
- 106 Fen mari Kittens plate
- 107 Fen mari Kittens toothpick
- 108 Dugan 8" white Fanciful ruffled bowl
- 109 Fen 16" mari Rustic mid-size vase

- 110 Nwood purple G&C low fruit bowl. Nice color
- 111 Nwood purple G&C deep fruit bowl. Nice color elect hi-lights
- 112 Mburg 10" purple Hanging Cherries MIC bowl
- 113 Fen 9" blue 2 flowers ftd ruffled bowl
- 114 Imp mari Double Scroll console set
- 115 West 9" purple Pearly dots plate- silvery
- 116 Nwood purple 7pc G&C berry set. Scarce to find c complete
- 117 Nwood green Holly card tray
- 118 Nwood mari G&C stippled humidior. Scarce
- 119 Nwood purple G&C humidior. Scarce
- 120 Nwood white 8 sided bushel basket
- 121 Dugan purple Puzzle bon bon
- 122 Nwood elect blue Bushel Basket
- 123 Nwood purple Acorn Burr creamer and spooner
- 124 Mburg 6.5" purple Bullseye & Loops vase Scarce and nice color
- 125 Fen 5.5" mari Feathers vase
- 126 Dugan 5.5" white Target vase. Cool shape & frosty
- 127 Nwood Strawberry & Cable cream & Sugar Not CG
- 128 Honey Keeper
- 129 Dugan purple JIP vase
- 130 Fenton 7" Green Vintage plate
- 131 Fenton 7" blue Vintage plate
- 132 Fenton 7" purple Vintage plate
- 133 Nwood Grape Arbor purple tankard, Scarce
- 134 Nwood purple Oriental Poppy tankard
- 135 Nwood GREEN Oriental Poppy tankard Scarce
- 136 Nwood mari Oriental Poppy tankard
- 137 Nwood green w/ gold paint Oriental Poppy tankard NOT CG
- 138 Nwood GREEN Dandelion tankard- Scarce
- 139 Nwood PURPLE Dandelion tankard- Scarce
- 140 Nwood MARI Dandelion tankard. darker side.
- 141 Fen blue Grapevine and Lattice 5 pc water set
- 142 Dugan elect purple Many Fruits Punch bowl and base



- 143 Imp mari Colonial Lady 5" vase. has odd coloration
- 144 Imp purple Colonial Lady vase 5"
- 145 Nwood purple G&C punch set w/ 5 cups.
- 146 Nwood 6.5" purple Tree Trunk Squatty vase
- 147 Nwood 9" white Rose Show plate- Great color
- 148 Dugan 8" cherries bowl- Um.... UGLY!! but needs a home!
- 149 Mburg 9.5" rad purple Peacock at Urn Master berry bowl.
- 150 Mburg 10" rad purple Zig Zag tri corner bowl Scarce and real nice

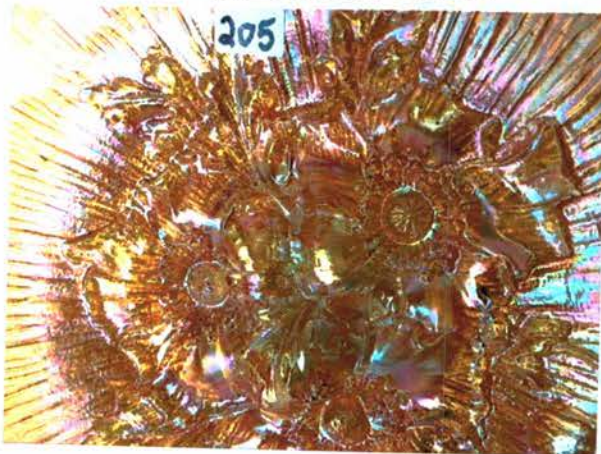


- 151 Dugan 9" BLUE Apple Blossom Twigs plate
- 152 Fen 9" blue Captive Rose plate. Nice
- 153 Imp green Grape wine set
- 154 Nwood purple G&C tankard pitcher- Scarce
- 155 Nwood mari G&C tankard pitcher- Scarce
- 156 Dugan mari Lattice & Daisy pitcher
- 157 Mburg mari Hobnail Swirl rosebowl. Scarce
- 158 Mburg mari Hobnail Swirl Spittoon. Scarce
- 159 Mburg mari Multi Fruits and Flowers 7pc punch set. Really nice set.



- 160 Mburg green Holly Sprig card tray
- 161 Mburg mari Holly Sprig card tray Isaac Benesch
- 162 Nwood 5" purple Strawberry ruffled bowl
- 163 Mburg green Boutonniere compote
- 164 Imp Grape mari punch bowl and base
- 165 Fenton mari Horse Medallion JIP bowl
- 166 Imp 9" Green Open Rose plate
- 167 Nwood 9" mari Good Luck plate w/ BW back
- 168 Nwood 7" IB Thin Rib vase. Squatty.

- 169 Nwood 8" purple Tree Trunk vase. NICE COLOR!!
- 170 Grouping of hatpins
- 171 Nwood 13" BLUE Tree Trunk mid-size vase. Scarce
- 172 Nwood 14" mari Tree Trunk mid-size vase.
- 173 Nwood IB Fine Cut & Roses rosebowl
- 174 Imp mari Grape wine decanter & 2 wines
- 175 4 Novelty Swans
- 176 Nwood BLUE Peacock at Fountain water pitcher  
Scarce and pretty
- 177 Imp elec purple Diamond Lace pitcher. Always hot
- 178 SUPER Dugan mari Wreath Cherry water pitcher.  
Great Color
- 179 Nwood purple Acorn Burr 9pc berry set.
- 180 Nwood purple G&C butter dish
- 181 Nwood purple G&C Sweetmeat
- 182 Nwood 13" white Thin Rib mid-size vase
- 183 Super Nwood mari G&C MASTER 13 pc punch set  
Real nice color!
- 184 Nwood mari Memphis fruit set
- 185 Imp mari Fashion 8pc punch set. RARE round top
- 186 Nwood purple G&C powder jar
- 187 Nwood 8.5" mari Poppy Show bowl. Nice bright color
- 188 Dugan 9" blue Windflower plate- Scarce color
- 189 Fen 9" white Peacock at Urn plat
- 190 Nwood 9" purple 3 Fruits plate
- 191 Nwood white Peach water pitcher w/ gold trim
- 192 Nwood green Peach water pitcher w/ gold trim Not CG
- 193 Nwood BLUE Peach water pitcher. Nice elect hi-lights
- 194 Nwood 8" IG Rose Show ruffled bowl Real nice pastel  
irid.
- 195 Nwood 9" purple Wishbone tri-corner ftd plate
- 196 Dugan 9" PO Border plants HG plate
- 197 Nwood 9" green 3 Fruits plate. DARK
- 198 Nwood 9" purple Wishbone ftd plate
- 199 Nwood elect purple G&C bon
- 200 3 Stretch candlesticks
- 201 Imp mari Loganberry vase
- 202 Imp limey green Loganberry vase. Is that a word?
- 203 Nwood 9" purple Peacocks ruffled bowl
- 204 Nwood 9" BLUE Poppy Show plate. Scarce
- 205 Nwood 9" mari Poppy Show plate- PRETTY



- 206 Nwood G&C water pitcher
- 207 Nwood purple Acorn Burr 7pc water set
- 208 Dugan purple Heavy Iris tankard.
- 209 Dugan mari Heavy Iris tankard
- 210 Nwood mari Grape Arbor tankard
- 211 Mari Grapevine & Lattice tankard
- 212 Camb green Buzz Star water pitcher
- 213 Nwood mari G&C water pitcher
- 214 Nwood GREEN G&C water pitcher
- 215 Nwood mari Grape & Gothic Arches water pitcher
- 216 Nwood BLUE Grape & Gothic Arches water pitcher &  
4 tumblers



- 217 RARE Fenton blue Star Flower water pitcher.
- 218 Nwood mari Acorn Burr water pitcher
- 219 Nwood green Acorn Burr water pitcher- Scarce
- 220 Nwood green G&C candlesticks
- 221 Nwood mari G&C candlesticks
- 222 Fenton blue Horse Medallion JIP bowl
- 223 Nwood 9" purple Good Luck plate
- 224 Nwood 9" GREEN Good Luck plate w/ BWB Scarce
- 225 Fenton 9" blue 3 Fruits plate
- 226 Nwood 9" purple G&C plate w/ PB
- 227 Nwood 9" purple 3 Fruits stippled plate
- 228 Fen 9" blue Orange Tree Plate
- 229 RARE Fen 9" It amy/ lav Concord plate Hard to find  
color
- 230 Nwood 9" lite IB Peacocks plate. NICE!!
- 231 Nwood 9" IG Peacocks plate
- 232 Nwood 9" purple Peacocks plate
- 233 Nwood 9" GREEN Peacocks plate w/PB Scarce
- 234 Nwood 9" mari G&C plate w/BW back
- 235 Nwood 9" green Strawberry plate
- 236 Fen 9" blue Peacock at Urn plate
- 237 Nwood 9" mari 3 Fruits Stippled plate
- 238 Nwood 9" mari 3 Fruits plate
- 239 Fen 9" mari Peacock at Urn plate. NICE
- 240 Nwood 9" White Rose Show Plate, Frosty
- 241 Fen 9" mari Holly Plate.



- 242 Mburg rad purple Holly Whirl spade shape nappy
- 243 Fen 17" mari Rustic mid-size vase
- 244 Fen 18" blue Rustic mid-size vase
- 245 Fen 16" blue Rustic mid-size vase w/CRE
- 246 Thin rib mari & Corinth purple JIP vases
- 247 Mari & Green 8" Ripple Vases
- 248 Mari & Green Feathers 10" vases
- 249 Blue & Green April Showers vases 10"
- 250 Green Thin Rib & Diamond Rib vases 11"
- 251 PO 10 & 11" Target vases
- 252 Blue Spirolex and mari Pulled Loop vase
- 253 Blue Rustic CRE & mari Butterfly & Berry vases
- 254 Green Tree Trunk and purple Knotted Beads vases.
- 255 Imp Grape carafe- Green
- 256 Imp Grape carafe- mari
- 257 Imp Grape carafe- purple
- 258 Smoke & Mari 5" Morning Glory vases
- 259 2 7" mari Morning Glory vases
- 260 Mburg Hobnail Swirl vase- Purple Scarce
- 261 Daisy Squares mari- Mary Ann mari- Diamond block vases. Nice lot!
- 262 Nwood Fine Rib and Long Thumbprints mari vases
- 263 Mari Plume Panels & Green Long Thumbprint vases
- 264 Mari Thin Rib and Lattice & Points vases
- 265 Green Tree Trunk and Long Thumbprint vases
- 266 Diamond & Bows- Beaded Bullseye and twigs vases
- 267 Nwood mari ruffled and JIP vases
- 268 Dugan PO Nautilus Cream & Sugar & purple Creamer
- 269 Fenton tri corner Peacock Tail and Camb Inv Strawberry bowl
- 270 2 pieces mari ABC Plate & Herringbone
- 271 Golden Wedding Bottle w/ label
- 272 3 OE Hats- mari- mari JIP-Pink?
- 273 3 Miniature Blackberry Compotes Green Blue mari. NO Flakes on edges or corners! Nice lot!
- 274 Blue Holly compote and mari compote
- 275 St Clair mari Elks plate
- 276 Imp white Homestead Chop plate. Nice Stretchy color
- 277 Imp elect purple Homestead chop plate. Always a sought after plate



- 278 Nwood GREEN Oriental Poppy 7 piece tankard set RARE to find complete



- 279 Fenton mari Paneled Dandelion 7pc water set
- 280 Nwood IB Grape Arbor 7 pc water set. SCARCE
- 281 Nwood mari Dandelion 7 pc tankard set
- 282 Nwood purple Oriental Poppy 7pc water set. NICE!!!
- 283 Nwood white Grape Arbor 7pc tankard set. Scarce
- 284 RARE Fenton blue Milady tankard pitcher Nice detail and color
- 285 RARE Fenton white 3 row 8" bowl Very hard to find
- 286 Fenton 9" BLUE Little Fishes ftd ICS bowl Scarce
- 287 Fenton 8" RED RED RED Vintage ruffled bowl WOW. Looks red, even feels red!!



- 288 Nwood elect purple G&C low fruit bowl. Real nice!!
- 289 Nwood purple Springtime Butterdish
- 290 Nwood 9" white Rose Show plate. has kind of a radium look
- 291 Nwood 9" DARK MARI Rose Show plate
- 292 Nwood 9" DARK MARI Poppy Show plate. Here ya go!

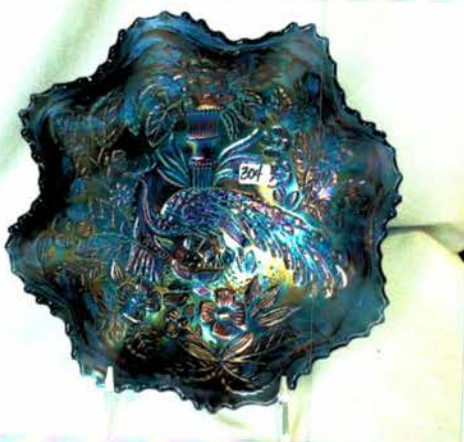
- 293 Nwood 8" White Poinsettia & Lattice ruffled bowl  
Scarce
- 294 Nwood 8" mari Poinsettia & Lattice ruffled bowl  
Scarce
- 295 Nwood 8" IB Poinsettia & Lattice ruffled bowl  
Beautiful bowl!



- 296 Fen 8" RED Stag & Holly fld ruffled bowl. bright color
- 297 RARE Fen mari Butterfly & Berry Hat Pin holder  
Hardly ever sold!!
- 298 Nwood IB Dandelion Knights Templar mug. Scarce
- 299 Nwood mari Dandelion mug.
- 300 Fen 8" blue Peacock at Urn ICS bowl Wonderful color.  
Actually on all of the upcoming Fenton Peacock items,  
Color is above average if not excellent



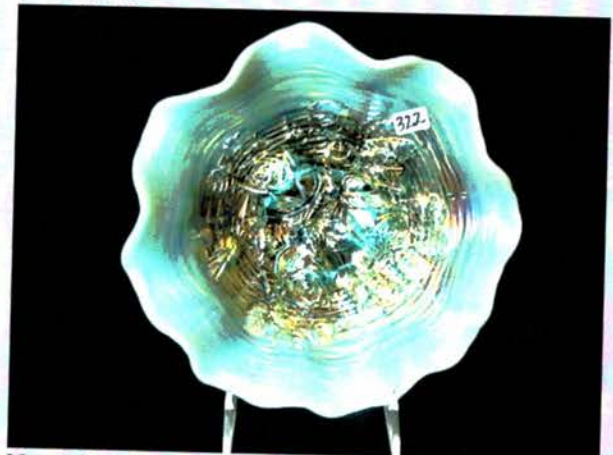
- 301 Fen 9" blue Peacock at Urn Plate
- 302 Fen 9" mari Peacock at Urn Plate
- 303 Fen 9" Purple Peacock at Urn 8 ruffled bowl RARE
- 304 Fen 8" elec blue Peacock at Urn 8 ruffled bowl Oh  
boy!



- 305 Fen 8" white Peacock at Urn 6 ruffled bowl
- 306 Fen 8" dark mari Peacock at Urn 6 ruffled bowl. As  
close to pumpkin as you will find!
- 307 Nwood 9" mari Peacocks plate. Nice
- 308 Fen 8" purple Peacock at Urn 3-1 edge bowl. Very  
Rare bowl and pretty!!



- 309 Mburg Ohio Star crystal tankard
- 310 Mburg 7" opalescent Country Kitchen bowl RARE
- 311 Imp elect purple Cobblestone ruffled bowl
- 312 Nwood 9" mari Good Luck PCE bowl
- 313 RARE Nwood 9" Custard Good Luck ruffled bowl w/  
light nutmeg. Very hard to find bowl!
- 314 Imp mari Open Rose complete table set
- 315 6 mari Nwood G&C tankard tumblers. 1 money well  
matched
- 316 RARE Celeste blue stretch complete nut set
- 317 WOW!! Imp elect purple Grape water carafe
- 318 Imp Iron Cross mari Jewels square bowl
- 319 Nwood purple G&C sweetmeat
- 320 Nwood elect blue round Bushel Basket
- 321 Fen bright mari Orange Tree Loving cup. NICE
- 322 Beautiful pastel aqua opal Rose Show bowl LOADS  
OF OPAL!

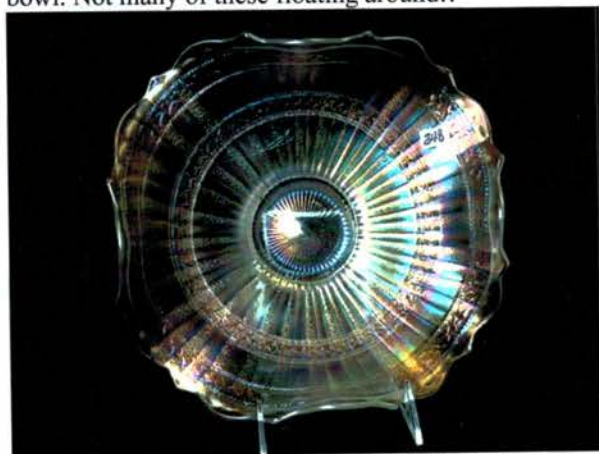


- 323 Nwood IB G&C banana boat. Scarce w/ lots of color!
- 324 Mari perfume bottle w/ pagoda shape stopper
- 325 mari candlestick
- 326 Imp mari 5" Morning Glory vase. Nice top
- 327 Nwood 11" Tree Trunk vase.
- 328 Fen 11" mari Flute vase

- 329 Imp 10" mari Ripple vase
- 330 Imp 9" white Ripple vase- or clambroth
- 331 RARE Nwood Green G&C powder jar
- 332 Nwood Aqua Bushel Basket. RARE COLOR! maybe the slightest of opal on one handle, MAYBE
- 333 Nwood lime green Bushel Basket- Scarce
- 334 Nwood SAPPHIRE Bushel Basket. RARE!



- 335 Fen 7" mari Horse Medallion plate
- 336 Dugan 6" Ice Lav Grapevine Lattice low ruf bowl
- 337 5" purple Jeweled Heart berry bowl
- 338 PINK Ringed salt & Pepper set
- 339 Cont. candlesticks
- 340 4 Golden Harvest wines- mari
- 341 Mari Kittens cup
- 342 Mburg crystal Ohio Star vase
- 343 Pair celeste blue Trumpet candlesticks
- 344 Pair green - Apple green- Trumpet candlesticks Scarce color
- 345 Large & Small piggy banks- Both contain MONEY!
- 346 Nwood amy Flute sherbet
- 347 Cam mari Inverted Feather compote
- 348 RARE Fenton 9.25" WHITE Stippled Rays square bowl. Not many of these floating around!!



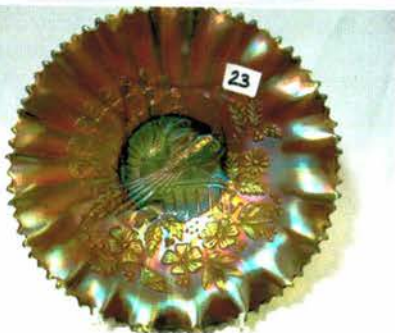
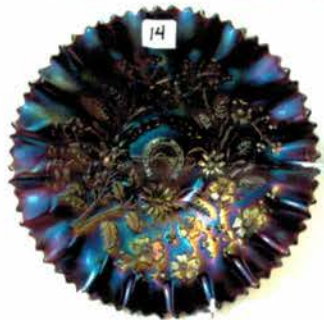
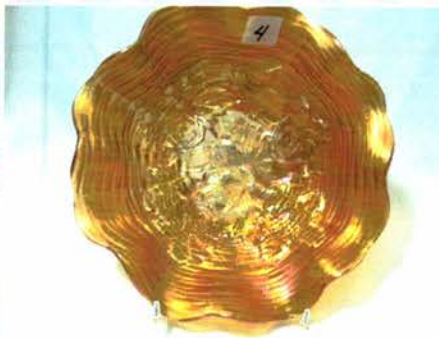
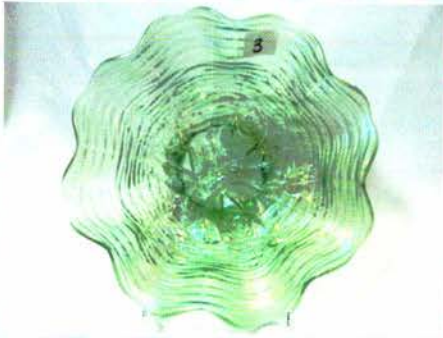
- 349 Nwood 9" IB Nippon PCE bowl. Nice dark color
- 350 Nwood 9" Lime Green Embroidered Mums plate
- 351 Imp mari 12" Beaded Bullseye vase
- 352 Imp grape mari punch base. Actually has real nice color!

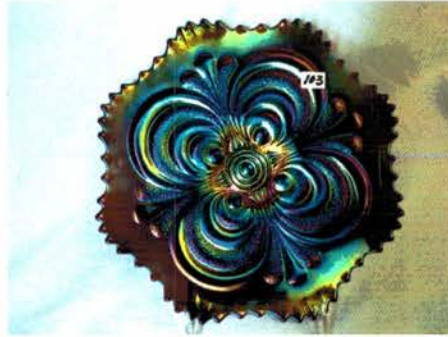
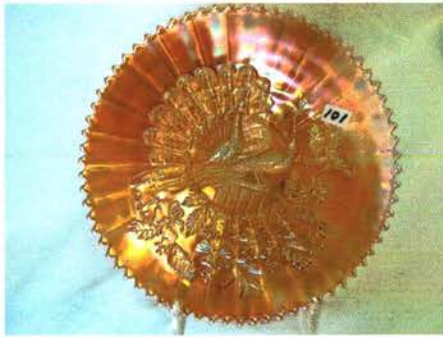
- 353 Imp SMOKE 10" Fashion ICS bowl. RARE!
- 354 Fen blue Horse Medallion nut bowl. SCARCE
- 355 Fen blue Floral & Grape water pitcher
- 356 Celeste blue 7" candlesticks w/ light gold trim
- 357 Celeste blue 8.75" Colonial candlesticks
- 358 Nwood white Heart & Flower compote
- 359 Dugan PO Fishnet epergne
- 360 Imp 8" dark green Ripple vase w 3 3/8" base
- 361 Mari Memphis punch base and cup
- 362 Imp Smoke Star Medallion milk pitcher- flakes on base
- 363 Fenton 7" blue Leaf Chain ICS bowl
- 364 SUPER Fen 9" blue Ribbon Tie 3-1 edge bowl Really nice!
- 365 Fen 6" mari Blackberry Spray OE hat
- 366 Fenton elect blue Grapevine & Lattice tumbler
- 367 Fenton blue Orange Tree hatpin holder
- 368 Fen 9" blue Holly Plate
- 369 Dugan 8" purple Fanciful ruffled bowl
- 370 Dugan purple Formal hatpin holder
- 371 Dugan PO Honeycomb rosebowl
- 372 Dugan elect purple Nautilus Creamer
- 373 Dugan purple Nautilus Creamer
- 374 Windflower and Cosmos Vari mari Plates
- 375 2 Dugan purple Many Fruits cups
- 376 Nwood purple G&C breakfast cr/sug set
- 377 Nwood mari G&C creamer and Bushel basket
- 378 Nwood purple 8 sided Bushel Basket
- 379 Nwood AO Beaded Cable Rosebowl
- 380 Nwood AO Leaf & Beads rosebowl
- 381 Nwood pastel AO Drapery rosebowl All 3 are beauties

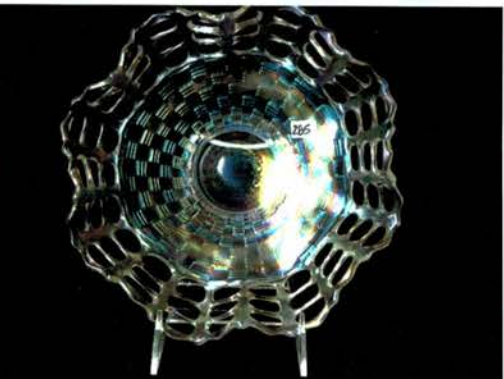


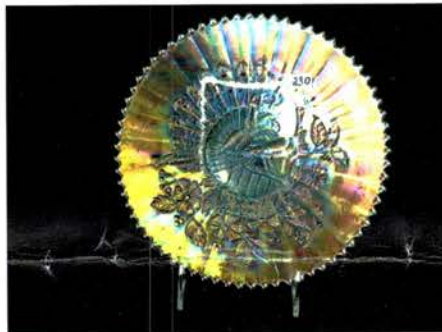
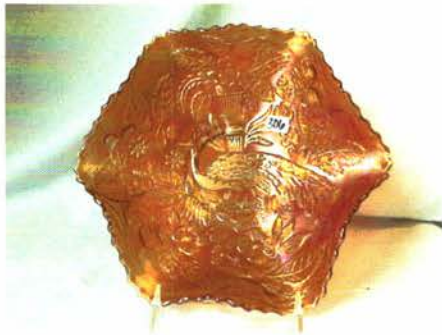
Thanks for participating todays auction. We hope you had a good time at Lake Chautauqua and the WWWCGA Carnival Glass Convention!!

Please watch our website for our fall and spring schedule of Carnival Glass and Antiques Auctions.









**Jim Wroda Auctions**

2118 Magnolia Ave.

Ashville, NY 14710

716.526.423

PRESORTED  
FIRST CLASS MAIL  
U.S. POSTAGE  
**PAID**  
CELINA, OH  
PERMIT NO. 99

**FIRST CLASS POSTAGE PAID**

9-10\*\*\*\*\*AUTO\*\*MIXED AADC 434  
LEE MARKLEY  
PO BOX 306  
502 N BROADWAY ST  
MENTONE IN 46539-9531



**Schedule for the WWWCGA Convention Auction in Ashville, New York- Lake Chautauqua**  
**Wednesday, August 28th**

9:00 am - Dealer setup/ door open all day to everyone!  
9:00 am - Golf Tournament Evening cookout for everyone!

**Thursday, August 29th**

8:30 am - Doors Open / Free Breakfast  
10:00 am - Carnival Glass Seminar  
Noon - Free Lunch  
2:00 pm - Carnival Glass Seminar  
4:00 pm - Leave Auction Facility for Dinner Cruise  
5:00 pm - Cruise Departs

**8:00 pm - Ladies Night Out Auction**  
**Friday, August 30th**

8:30 am - Doors Open / Free Breakfast  
10:00 am - Carnival Glass Seminar - Gary Lickver  
**4:00 pm - Fenton Glass Auction**  
6:00 pm - Hog Roast and Chicken BBQ with all the trimmings

**Saturday, August 31st**

8:00 am - Doors Open / Auction Preview / Free Breakfast  
**9:30 am - Carnival Glass Auction- Hamilton Collection**  
Breakfast and Lunch provided

**Hotel Information- CALL NOW!!!!**

**Comfort Inn in Jamestown**

8 miles from Jim Wroda's auction facility  
Telephone: 716.664.5920

The block is named Carnival Glass Convention the Block **WILL BE** released August 3rd 2013  
Cost: \$99.00 for King or 2 Double. Breakfast included.

**Americas Best Value Inn**

4.5 miles from Jim Wroda's auction facility. Nice hotel but dated. It's clean and several people stayed there last year.  
Telephone: 716.488.1904

No block but mention Carnival Glass Convention to get the special rates  
Cost: \$75 for King (normal \$89) / \$85 for 2 Double (normal \$99)

There are other hotels in the area, which you can find by going to [www.tourchautauqua.com](http://www.tourchautauqua.com). You need to get your reservations made as it is a holiday weekend as well as the two tournaments mentioned above.