



21

Carnival Glass 2013 AUCTION

Saturday, Aug. 10, 9:30 a.m.

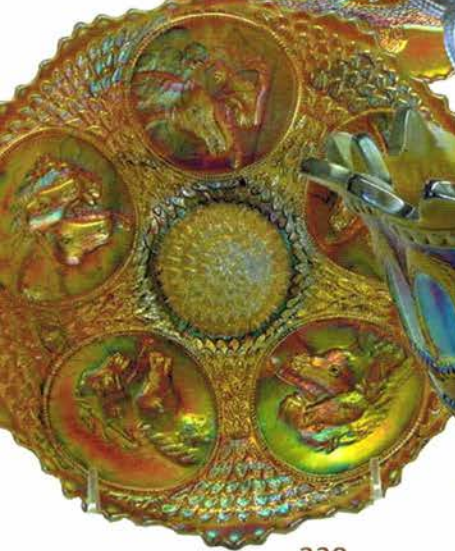
Senior Activity Center
326 4th St. NE
Mason City, Iowa



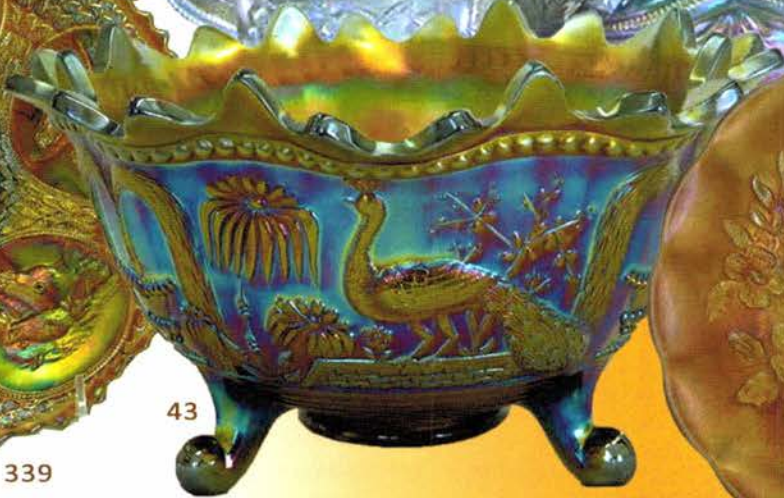
10



61



339



43



25

Jim & Jan Seeck

Seeck Auctions

641-424-1116

Carnival Glass Auction

Saturday, August 10 - 9:30 AM

Senior Activity Center — 326 4th St. NE — Mason City, Iowa

(From South: Take US Hwy 65 into Mason City and turn right or East on 4th ST NE, go 2 blocks)

(From North: Take US Hwy 65 into Mason City and turn left or East on 4th ST NE, go 4 blocks)

(This is the brown building on the West end of the block)

NO BUYER'S PREMIUM

Preview: Friday, August 9, 3 p.m. — 6 p.m.

For our Online Auction Catalog, check our website: www.seeckauction.com

**Absentee bidding is available on-line through Auction Flex using our online catalog*

Absentee bidding closes Friday, August 9 at 6 p.m. CST

e-mail: jimjan@seeckauction.com

Please email us and we will put you on our email mailing list for auction notices.

About the auction

Seeck Auctions is pleased to be selling at auction a fantastic selection of glass from the Arnold & Dorothy Snell collection from Colorado, the Don & Becky Hamlet collection from North Carolina and the John and Loretta Nielsen collection from Florida. Come to Mason City for a great summer auction!

Lodging

Mason City: Holiday Inn Express (new) – (641)424-1200; Quality Inn – (641)423-4444; Country Inn & Suites – (641)423-1770; Super 8 – (641)423-8855; Historic Park Inn Hotel – (641)422-0015;

Clear Lake: AmericInn – (641)357-8954; Best Western Holiday Lodge (641)357-5253.

Auction Information

Terms: Cash or Check, VISA, MasterCard & Discover accepted w/proper ID. 4% Clerking Fee on all purchases made using credit cards. Announcements made day of sale take precedence over any printed information.

We have 3 options for absentee bidding:

1) If you DO NOT have internet access or access to our website, you can:

Call us by phone to enter your bids at (641)424-1116 **OR** By sending the numbers of the item(s) desired and the amount bid on each to: Seeck Auctions, PO Box 377, Mason City, Iowa 50402. (The mail has not been very dependable. We would prefer you call us with your bids rather than send them in a letter.)

- All written and called in bids will be entered into the online catalog by us.
- Written and Phone Absentee Deadline: Have all bids in by **Wed., Aug. 7.**

2) Enter your bids from our website into our online catalog through the Auction Flex system.

- ◆ When you get to the online catalog, you will need to login as a bidder. For the first time you will need to **set up your account** by creating a user name and password. This will include filling out a form with your name, address, etc. You will also need to **register for the auction** which will ask you to enter a valid credit card number. This card will be validated by a \$1 charge to your card. This will only happen once and you will now be able to enter bids through our online catalog by just logging in with your user name and password.
- ◆ You will use this user name and password for all our auctions. You are not required to pay by credit card if you are successful. This is just a safeguard for us if someone does not pay. We will let you know what you owe us through an email and you can decide how you would like to pay us.
- ◆ An exciting advantage of entering your bids online yourself, is the option to be notified by email if you are outbid on an item. You will know when you are outbid on an item and you can increase your bid on that item or bid on something else. **There will be a cutoff date and time for entering your bids online.** After this time has passed, you will not be able to enter your bids from our online catalog. **Online absentee bidding closes at 6 p.m. Fri., Aug. 9.**
- ◆ Remember that just because you are the high bidder in the online catalog, this does not mean you have won the item. Your bid will still need to beat the floor bidders and live phone bidders. This system will run our absentee bids just as we did before. You will still be able to buy the item lower than your online bid unless someone on the floor bids you higher.
- ◆ If you do not receive an item that sold for less than your bid, assume we cancelled your bid because the item had a severe manufacture problem, damage or was not listed correctly.

3) Live phone bidding is available on pieces with an estimated sale price of \$500 or more. If you would like to participate in live phone bidding, contact us **before the auction by the Tuesday before the auction, Aug. 6.** We will need to know the lot# and the phone number that you can be reached at on the day of the auction. We will also need your home phone number if different than the above number. Please call with questions: 641-424-1116.

There is a \$7 handling charge for each successful bid. Shipping and insurance charges are additional.

Bidders will be notified by phone/email if their bid(s) are successful. This will be done 1 - 3 days after the auction.

BID INCREMENTS: \$1 - \$100/\$5 \$100 - \$200/\$10 \$200 - \$700/\$25 \$700 - \$1,500/\$50
 \$1,500 - \$3,000/\$100 \$3,000+ Auctioneer's Discretion

- ___ 1. Plain Jane basket - smoke
- ___ 2. Plain Jane basket - white
- ___ 3. Paneled Plain Jane basket - marigold
- ___ 4. Flashed creamer & sugar
- ___ 5. Apple Panels creamer & sugar – marigold - tiny pinpoint on base of creamer
- ___ 6. Leaf Rays spade shaped nappy - purple
- ___ 7. Leaf Rays spade shaped nappy - white
- ___ 8. Leaf Rays spade shaped nappy - peach opal
- ___ 9. Leaf Rays spade shaped nappy - marigold
- ___ 10. **Memphis 8 pc. fruit bowl set - white - very rare & highly desirable, pretty**
- ___ 11. Leaf Columns 6” squatty vase – marigold - pretty
- ___ 12. **Greek Key 9” plate w/BW back - green - very pretty, scarce**
- ___ 13. **Dragon & Lotus ruffled bowl - yellow opal - very unusual bowl, does glow under a black light with the yellow having a reddish tint, unique!**
- ___ 14. **Dragon & Lotus ruffled bowl - marigold on moonstone - has irid. spot in center of bowl, scarce**
- ___ 15. Dragon & Lotus ruffled bowl- amber-scarce color, nice
- ___ 16. Dragon & Lotus ruffled bowl - blue - nice
- ___ 17. **Horse Medallion ftd round bowl - green - scarce color, nice**
- ___ 18. **Horse Medallion ftd round bowl – amethyst - scarce color**
- ___ 19. Horse Medallion ftd round bowl - blue
- ___ 20. Lattice & Points w/Daisy center hatshape - marigold - very pretty
- ___ 21. **Cambridge Near Cut decanter - green - extremely rare, especially with stopper, stopper has damage but cannot see as inside bottle**
- ___ 22. Berry Band & Ribs 3 pc. tumble up - marigold - scarce
- ___ 23. Octagon square shaped water pitcher - marigold - Piccardio
- ___ 24. Lea creamer & sugar set - marigold
- ___ 25. **M’burg Trout & Fly 9” plate - lavender/amethyst - extremely rare plate, a great opportunity to buy a super piece of M’burg**
- ___ 26. Egyptian Lustre candlesticks - cobalt blue - rare color, pretty
- ___ 27. **Stag & Holly 9” spt ftd plate-marigold- nice,scarce**
- ___ 28. Banded & Stippled Grape & Cable cologne bottle - marigold - stopper not stippled, rare to find stippled
- ___ 29. M’burg Hanging Cherries 7” IC shaped bowl – green-satin, pretty
- ___ 30. **Starflower water pitcher - blue - fantastic, very beautiful & rare!**
- ___ 31. **Horse Medallion 7” IC shaped bowl – green - rare color**
- ___ 32. **Horse Medallion 7” IC shaped bowl - amethyst - scarce, nice**
- ___ 33. Horse Medallion 7” IC shaped bowl – marigold
- ___ 34. **Inverted Thistle giant ruffled compote - green - extremely rare item, not many opportunities, neat!**
- ___ 35. Heavy Vine 7 pc. cordial set – marigold - very rare, can’t remember selling another
- ___ 36. Estate breakfast set - blue opal
- ___ 37. Estate breakfast set - marigold
- ___ 38. **Peacock & Grape IC shaped bowl – marigold on moonstone - super pretty, has slight heat check in base**
- ___ 39. Peacock & Grape IC shaped bowl - lime green - very pretty
- ___ 40. Peacock & Grape IC shaped bowl – green - minor pinpoint on base
- ___ 41. Peacock & Grape IC shaped bowl - amethyst - super
- ___ 42. Peacock & Grape IC shaped bowl - marigold – nice
- ___ 43. **Peacock at the Fountain fruit bowl – green - extremely rare color for these, highly desirable, a great opportunity**
- ___ 44. Grape & Cable pin dish - purple - scarce
- ___ 45. **Hearts & Flowers ruffled compote – green - very scarce color, nice**
- ___ 46. **Flute & Cane cordial - marigold - very hard to find the cordial**
- ___ 47. **Paneled Dandelion tankard water pitcher - green - as nice as these get, a beauty**
- ___ 48. Paneled Dandelion tumbler - green
- ___ 49. **Paneled Dandelion tankard water pitcher - blue - another beauty**
- ___ 50. Paneled Dandelion tumbler - blue
- ___ 51. Grape & Cable sweetmeat - purple
- ___ 52. **Inverted Strawberry chalice - green - very rare, highly desirable**
- ___ 53. **Inverted Strawberry chalice – marigold - also rare, tiny pinpoint on top edge**
- ___ 54. Pair of Elektra creamers – marigold - Riihimaki
- ___ 55. Curved Star round bowl - blue - Brockwitz
- ___ 55a. Curved Star compote – blue - EDA
- ___ 56. **Stag & Holly spt ftd ruffled bowl - aqua - rare color**
- ___ 57. Stag & Holly spt ftd ruffled bowl - green
- ___ 58. Stag & Holly spt ftd ruffled bowl - blue - pretty
- ___ 59. Stag & Holly spt ftd ruffled bowl - marigold
- ___ 60. Wine & Roses wines (3) - blue - scarce color
- ___ 61. **J.N. Ledford, Cooleemee, N.C. Heart & Vine 9” plate - marigold - super pretty & super rare, very minor nick on flat of base, who cares!**
- ___ 62. Strawberry PCE bowl w/plain back - marigold
- ___ 63. Springtime master berry bowl - purple - scarce
- ___ 64. **Holly ruffled bowl - peach opal - extremely rare color for these & nice**
- ___ 65. Holly ruffled bowl - red - scarce, has band of missing irid. around inside of bowl
- ___ 66. Palm Beach water pitcher - honey amber - minor nick on top rim
- ___ 67. Palm Beach tumbler - honey amber - nice
- ___ 68. Orange Tree shaving mug - blue
- ___ 69. M’burg Vintage Hobnail IC shaped bowl – marigold - burst in base, polished chip on edge & chip on edge
- ___ 70. **Cherry & Cable 4 pc. table set - marigold - rare set**
- ___ 71. **Regal Cane 8 1/4” pitcher - marigold - rare**
- ___ 72. **Cambridge Near Cut cologne bottle - marigold - very rare piece, chip on stopper**
- ___ 73. **Cambridge Near Cut cologne bottle - green - very scarce, nice**
- ___ 74. **Peacock & Grape spt ftd ruffled bowl - red - very rare & highly desirable**
- ___ 75. **Peacock & Grape spt ftd ruffled bowl - lime green opal - very nice for these, scarce**
- ___ 76. Peacock & Grape spt ftd ruffled bowl - blue - pretty
- ___ 77. Peacock & Grape spt ftd ruffled bowl – amethyst
- ___ 78. **Waterlily ftd chop plate - marigold - extremely rare plate, don’t remember selling another, great piece!**
- ___ 79. Stippled Fruits & Flowers 7” ruffled bowl - green - super pretty

- ___ 80. Fisherman's mug - peach opal -very rare color, nice
- ___ 81. Fisherman's mug - purple - nice, has metal tag that says "The Florence"
- ___ 82. Peacock at the Fountain water pitcher - green - very rare & nice, a beauty
- ___ 83. Peacock at the Fountain tumbler - green - very pretty, pinpoint on top edge
- ___ 84. Stag & Holly lg size IC shaped bowl - green - rare color, large chip on bottom of one foot
- ___ 85. Stag & Holly lg size IC shaped bowl - amber - super beautiful
- ___ 86. Stag & Holly lg size IC shaped bowl - marigold - pretty
- ___ 87. Pebble & Fan large vase - marigold - rare & highly desirable
- ___ 88. Inverted Feather cracker jar - green
- ___ 89. Orange Tree powder jar - amethyst - rare color, minor sliver on underside of rim of lid
- ___ 90. Orange Tree powder jar - blue - minor nick on lid
- ___ 91. Gevurtz Bros. Furniture & Clothing 6" adv. plate - amethyst - rare & super nice
- ___ 92. Imperial Grape 7 pc. wine set - purple - super nice set
- ___ 93. Imperial Grape 3 pc. wine set - marigold
- ___ 94. Windmill milk pitcher - marigold - minor nick on side of spout
- ___ 95. Poppy pickle dish - aqua opal - butterscotch & pretty, large manufacture separation on base
- ___ 96. Poppy pickle dish - green - super pretty
- ___ 97. Poppy pickle dish - blue - electric
- ___ 98. Grape & Cable turned in centerpiece bowl - green - rare color, nice
- ___ 99. Holly 3 in 1 edge deep bowl - blue - pinched differently, some may call this "2 in 1", unusual
- ___ 100. Poppy Show vase - smoke - very rare with super pretty irid.
- ___ 101. Grape & Cable Variant PCE bowl w/plain back - purple/lavender - super pretty
- ___ 102. Thistle CRE bowl - green - tiny nick on seam of base
- ___ 103. N's Peacock at the Fountain 7 pc. water set - blue - scarce, very nice
- ___ 104. Fenton Peacock at Urn ruffled bowl - green - super pretty, as nice as these get
- ___ 105. Fenton Peacock at Urn ruffled bowl - amethyst - also very pretty
- ___ 106. Inverted Strawberry lg rose bowl - amethyst - very rare, highly desirable
- ___ 107. Flat Panels 3 pc. tumble up - marigold - small chips around edge of saucer
- ___ 108. Tulip & Cane and Octagon water goblets - marigold - Octagon has nick on top of base
- ___ 109. Double Dutch ftd ruffled bowl - smoke - very pretty
- ___ 110. Stippled Strawberry ruffled bowl w/ribbed back - lime green - super pretty & very rare
- ___ 111. Stippled Strawberry ruffled bowl w/ribbed back - renninger blue - very rare color, nice
- ___ 112. Pony 6 ruffled bowl - amethyst - scarce color
- ___ 113. Wild Blackberry ruffled bowl - amethyst - scarce pattern
- ___ 114. Peacock at the Urn ruffled compote - blue
- ___ 115. Grape & Cable fernery - green - extremely rare & a beauty, top edge of fernery has spot with minor polishing
- ___ 116. Lined Lattice 6" squatty vase - peach opal - nice
- ___ 117. Bouquet water pitcher - blue - scarce
- ___ 118. Wishbone ftd ruffled bowl - blue - electric & super
- ___ 119. Wishbone ftd ruffled bowl - green
- ___ 120. Horse Medallion ftd rose bowl - aqua - very rare color, nice
- ___ 121. Horse Medallion ftd rose bowl - powder blue - another rare one, nice
- ___ 122. Horse Medallion ftd rose bowl - blue - pretty
- ___ 123. Horse Medallion ftd rose bowl - marigold - nice
- ___ 124. Inverted Strawberry lg compote - amethyst - scarce, nice
- ___ 125. Inverted Strawberry lg compote - marigold - has flattened out top, nice
- ___ 126. Band of Rose 3 pc. tumble up set - marigold - scarce, burst in tumbler base
- ___ 127. Stork & Rushes hdd basket - marigold
- ___ 128. Springtime water pitcher - marigold - very scarce pitcher & nice
- ___ 129. Springtime tumbler - marigold
- ___ 130. Imperial Grape hdd basket - smoke
- ___ 131. N's Poinsettia & Lattice ftd ruffled bowl - blue - scarce color, pretty
- ___ 132. N's Poinsettia & Lattice ftd ruffled bowl - purple - nice
- ___ 133. Holly ruffled hatshape - red - scarce
- ___ 134. Grape & Cable butter dish - ice green - extremely rare, very few known
- ___ 135. Memphis 7 pc. berry set - marigold - nice
- ___ 136. Peacock & Grape ruffled bowl - marigold on moonstone - nice
- ___ 137. Peacock & Grape ruffled bowl - red - very dark color, rare
- ___ 138. Peacock & Grape ruffled bowl - lime green - pretty
- ___ 139. Peacock & Grape ruffled bowl - amethyst - has slight slag effect, pretty
- ___ 140. Peacock & Grape ruffled bowl - blue - pretty
- ___ 141. Grape & Cable cracker jar - purple - small nick on rim of lid
- ___ 142. Inverted Feather large bonbon - green - whimsey made from base of cracker jar, really neat, has chip on base
- ___ 143. Regal Cane tumbler w/a Tartan base tumble up - marigold
- ___ 144. Vintage powder jar - purple - rare color, few minor nicks on lid
- ___ 145. Vintage powder jar - marigold
- ___ 146. Blackberry JIP CRE hatshape - green - has 2 sets of Blackberries, super
- ___ 147. Blackberry JIP CRE hatshape - powder blue
- ___ 148. Blackberry JIP CRE hatshape - light amethyst or pinkish - nice
- ___ 149. Blackberry JIP CRE hatshape - blue
- ___ 150. Dragon & Strawberry IC shaped bowl - blue - super pretty & very rare, has very minor pinpoint on base
- ___ 151. Fenton's Flowers rose bowl - light blue - chips on feet, only iridized on inside
- ___ 152. Fenton's Flowers rose bowl - blue - as pretty as I've seen, minor nicks on fee
- ___ 153. Fenton's Flowers rose bowl - marigold - super
- ___ 154. Stippled Three Fruits 9" plate w/ribbed back - sapphire - very rare & nice
- ___ 155. Basketweave Open Edge JIP basket - dark amber or brick red - very pretty
- ___ 156. Basketweave Open Edge JIP basket - amber - nice

157. Basketweave Open Edge JIP basket - amethyst - nice
158. Basketweave Open Edge JIP basket - blue
159. Basketweave Open Edge JIP basket - marigold
160. **Inverted Strawberry tankard water pitcher - marigold - very rare pitcher, nice, couple of bursts in base**
161. Inverted Strawberry tumbler - marigold - nice
162. **Inverted Strawberry tankard water pitcher - green - rare, nice**
- 162a. Inverted Strawberry tumbler - green
163. **Inverted Strawberry tankard water pitcher - amethyst - very rare & highly desirable, nice**
164. Inverted Strawberry tumbler - amethyst
165. **Horse Medallion ftd nut bowl - aqua - scarce color**
166. Horse Medallion ftd nut bowl - vaseline - nice
167. Horse Medallion ftd nut bowl - lime green - nice marigold overlay
168. Horse Medallion ftd nut bowl - amethyst - scarce color
169. Horse Medallion ftd nut bowl - blue - scarce color
170. **Orange Tree w/trunk 9" plate - green - very rare color & nice, small polished chip on base**
171. Peach 7 pc. berry set w/gold decoration - white - super nice with nice gold
172. **Good Luck 9" plate w/BW back - purple - very pretty for these, a nice one**
173. **Fruits & Flowers bonbon - ice green - has lots of bubbles in glass, scarce**
174. Fruits & Flowers bonbon - blue - electric
175. Fine Cut & Roses rose bowl w/fancy interior - white
176. Fine Cut & Roses rose bowl w/fancy interior - purple
177. Peacock Tail 7" IC shaped bowl - red - very, very rare bowl, minor pinpoint on edge
178. Pond Lily card tray shaped bonbon - blue
179. **Sweetheart cracker jar - green - nicks around lid & base, very rare**
180. **Fircone large vase - marigold - very scarce, highly desirable**
181. Flowers & Frames dome ftd ruffled bowl - peach opal
182. **Inverted Thistle 7" banana boat shaped whimsey-green - neat piece, has small filed spot on edge**
183. Brass desk lamp with white Steuben shades - nick on connecting rim of one
184. Brass hanging fixture w/2 Daisy Chain shades in marigold - one shade has nick on rim
185. Grape & Cable 7 pc. water set - purple - pretty set, one tumbler has base nick
186. Little Fishes ruffled ftd sauce - amethyst
187. Little Fishes ruffled ftd sauce - blue - pretty
188. **Daisy & Drape turned in vase - ice blue - extremely rare, highly desirable**
189. M'burg Blackberry Wreath IC sauce - amethyst - radium w/super irid.
190. **1914 Parkersburg Elks 7" plate - blue - very scarce, hard to find, pretty irid.**
191. N's Bushel Basket - blue - super pretty example
192. Acorn Burrs master berry bowl & 2 sauces-green-scarce
193. Holly CRE bowl - amethyst - nice, nick on base
194. Grape & Cable cologne bottle - green - some polishing on bottom of stopper
195. **Embroidered Mums ruffled bowl w/ribbed back - ice blue - scarce, nice**
196. Ripple 9" vase - purple - 3 3/8" base, pretty
197. **Cambridge Snowflake water pitcher - marigold - one of just a few known, neat pitcher**
198. Double Stemmed Rose dome ftd ruffled bowl - peach opal
199. Prism & Stars 8 pc. whiskey set - marigold - has under tray
200. **Stag & Holly lg size ruffled ftd bowl - green - scarce color & pretty**
201. Stag & Holly lg size ruffled ftd bowl - blue - super pretty
202. Stag & Holly lg size ruffled ftd bowl - marigold - minor pinpoint on point
203. Fruits & Flowers bonbon - blue - scarce color, nice
204. Strawberry 9" plate - purple - edges turn up, some might call it IC shaped
205. Orange Tree standard size mug - powder blue - scarce color
206. Orange Tree standard size mug - aqua - very pretty, some may call this sapphire
- 206a. Orange Tree standard size mug - amberina - minor nick on base
207. **Tree Trunk mid-size 16" vase w/plunger base - green - extremely rare to find w/plunger base**
208. Harvest Poppy ruffled compote - purple - nice
209. **Dragon & Lotus 3 in 1 edge bowl - lime green opal - rare bowl & nice**
210. Three Fruits ruffled bowl w/BW back - green
211. Three Fruits ruffled bowl w/BW back - marigold
212. Luster Rose water pitcher - clambroth - scarce, nice
213. Luster Rose tumbler - clambroth
214. **Captive Rose 9" plate - blue - super example, beautiful**
215. Cathedral Arches fruit or punch bowl - marigold - one piece - crack in the bottom of the bowl
216. **Old Rose Distilling / Stippled Grape & Cable Variant 9" plate w/ribbed back - green - scarce**
217. Three Diamonds 3 pc. tumble up set - marigold
218. **Inverted Strawberry ftd creamer & sugar - amethyst - scarce, nice**
219. Wishbone 10" ruffled bowl - green - scarce
220. Poinsettia milk pitcher - marigold - nice
221. Holly ruffled compote - aqua
222. Holly ruffled compote - amethyst
223. **Stippled Peacock at Urn master IC bowl - renninger blue - super rare color, highly desirable, has silvery irid.**
224. Pinecone 6" plate - green - nice
225. Pinecone 6" plate - marigold - nice
226. **Wishbone 10" PCE bowl w/BW back - white - super pretty irid., rare color**
227. Strawberry ruffled bowl w/plain back - purple - has electric irid.
228. Horse Medallion ruffled bowl - blue - small pinpoint on edge
229. Diamond Rib 7" squatty vase - amethyst
230. Fine Cut & Roses candy dish - white - slight polishing on foot
231. Fine Cut & Roses candy dish - marigold - couple small nicks on feet
232. Fine Cut & Roses candy dish - green
233. **Peacock at the Fountain 8 pc. punch set - purple - rare & highly desirable set, nice**
234. Riding Comet & Grooves decanter & 2 wines - marigold
235. **Forks cracker jar bottom - green - extremely rare**
236. Grape & Cable spt ftd 9" plate - amethyst

- ___ 237. **Lattice & Grape tankard water pitcher - blue - very pretty example, good even irid.**
- ___ 238. Lattice & Grape tumbler - blue
- ___ 239. Grape & Cable bonbon - blue - nice
- ___ 240. Peacock & Grape CRE bowl - marigold - pretty
- ___ 241. Singing Birds mug - green - nice
- ___ 242. **M'burg Fleur De Lis crimped edge dome ftd bowl - green - radium & super, great bowl**
- ___ 243. Greek Key ruffled bowl w/BW back - purple
- ___ 244. **Stippled Grape & Cable PCE bowl w/ribbed back - ice blue - super pretty, very small burst 1" in from outer edge**
- ___ 245. Fenton's Grape & Cable 7" ruffled bowl - red
- ___ 246. Panther ftd ruffled sauce - amethyst - scarce color
- ___ 247. Panther ftd ruffled sauce - blue - nice
- ___ 248. Panther ftd ruffled sauce - powder blue - scarce color, face is light on irid.
- ___ 249. **Blackberry Spray ruffled hat - reverse amberina opal - super pretty irid., rare**
- ___ 250. Grape & Cable powder jar - green - scarce color
- ___ 251. Grape & Cable powder jar - purple - nice
- ___ 252. **Buzz Saw small size cruet - green - nice**
- ___ 253. **Buzz Saw lg size cruet - green - nice**
- ___ 254. **Buzz Saw lg size cruet - marigold - also nice**
- ___ 255. Holly IC shaped bowl - amethyst
- ___ 256. **Stork & Rushes 7 pc. water set - blue - very pretty set**
- ___ 257. **Peacock & Grape spt ftd IC shaped bowl - peach opal - scarce color, chip on cleat under one foot**
- ___ 258. Peacock & Grape spt ftd IC shaped bowl - green
- ___ 259. Peacock & Grape spt ftd IC shaped bowl - amethyst - chip on cleat & chip on foot
- ___ 260. Peacock & Grape spt ftd IC shaped bowl - blue - beautiful
- ___ 261. **1911 Atlantic City Elks IC shaped bowl - blue - nice, scarce**
- ___ 262. **Three Fruits PCE decorated bowl - amethyst - has floral decoration on bowl, also etched "Emma May Christmas 1910", two minor nicks on base, great piece!**
- ___ 263. **Peacock at the Fountain butter dish - green - rare color, tiny pinpoint on edge of base**
- ___ 264. **Inverted Thistle 11" IC shaped bowl - green - have not seen one this big**
- ___ 265. Inverted Strawberry 7" IC shaped bowls (2) - green
- ___ 266. Cane Panels 2 pc. tumble up - marigold
- ___ 267. Big Basketweave hldd basket - marigold
- ___ 268. Luster Rose 9" deep round bowl - purple - super Imperial
- ___ 269. Horse Medallion JIP ftd bowl - amber - rare color, nice
- ___ 270. Horse Medallion JIP ftd bowl - blue - nice
- ___ 271. Horse Medallion JIP ftd bowl - marigold
- ___ 272. **Grape & Arbor tankard water pitcher - white - frosty & very nice 🍷**
- ___ 273. Grape & Arbor tumbler - white
- ___ 274. Beaded Shell mug - purple
- ___ 275. **Peacocks 9" plate w/ribbed back - ice blue - pretty irid. on a scarce plate**
- ___ 276. Dandelion mug - aqua opal - pretty w/nice opal
- ___ 277. **Tree Trunk mid-size 11 1/2" vase - blue - super pretty vase, very hard color to find especially under 12"**
- ___ 278. Pineapple & Fan creamer & open sugar - marigold - nick on bottom of base of sugar
- ___ 279. **Inverted Strawberry spittoon - green - very scarce, always in demand**
- ___ 280. **Inverted Strawberry spittoon - marigold - pretty, also in demand**
- ___ 281. Tartan 7 3/4" milk pitcher - marigold - scarce pitcher, Brockwitz
- ___ 282. Daisy Row Boat - marigold
- ___ 283. **Grape & Cable perfume bottle - purple - rough on bottom of stopper, no worries**
- ___ 284. Fine Cut & Roses rose bowl w/plain interior - purple - pinpoint on one foot
- ___ 285. Fine Cut & Roses rose bowl w/plain interior - marigold
- ___ 286. **Raspberry 4 pc. water set - purple - as pretty of pitcher as you can find**
- ___ 287. Lotus & Thistle IC shaped bowl - marigold
- ___ 288. Vintage 7" plate - blue - super pretty
- ___ 289. **M'burg Blackberry Wreath 7" ruffled bowl - blue - extremely rare bowl, satin & pretty, minor nick on base**
- ___ 290. **Stippled Grape & Cable centerpiece bowl w/points up - blue - rare color**
- ___ 291. Floral & Grape water pitcher - green - scarce color
- ___ 292. Pineapple & Fan 3 pc. tumble up - marigold
- ___ 293. **Inverted Strawberry card tray shaped bonbon whimsy - green - neat whimsy**
- ___ 294. Starburst spittoon - marigold - Riihimaki, chips on outer edge of top & mold roughness along top
- ___ 295. **Double Scroll candlesticks - red - very scarce**
- ___ 296. Asters lg rose bowl - marigold - scarce
- ___ 297. **E.A. Hudson Furniture Co. adv. ruffled bowl - purple - scarce**
- ___ 298. Lot of 5 Blackberry Block tumblers - green - one has split at top edge, these are hard to get
- ___ 299. Pansy ruffled bowl - smoke
- ___ 300. **Raspberry milk pitcher - purple - nice**
- ___ 301. Pinecone 7" bowl - blue
- ___ 302. Golden Harvest 6 pc. wine set - marigold
- ___ 303. **M'burg Blackberry Wreath 10" crimped edge square shaped bowl - marigold - radium & pretty**
- ___ 304. Leaf & Beads rose bowl - aqua opal - butterscotch, nice
- ___ 305. **N's Peacock at Urn master IC bowl - purple - nice**
- ___ 306. **Inverted Strawberry 11" ruffled bowl - amethyst - scarce**
- ___ 307. **Cherry & Cable water pitcher - marigold - very nice example, scarce**
- ___ 308. Cherry & Cable tumbler - marigold
- ___ 309. Inverted Strawberry spooner - amethyst - chip on base
- ___ 310. Inverted Feather parfait - marigold
- ___ 311. **Singing Birds 7 pc. water set - green - super pitcher, nice set**
- ___ 312. Basketweave Open Edge ruffled basket - red
- ___ 313. Basketweave Open Edge ruffled basket - green
- ___ 314. Basketweave Open Edge ruffled basket - amethyst
- ___ 315. Basketweave Open Edge ruffled basket - lime green - only iridized on back side
- ___ 316. Horlacher's Thistle ruffled bowl - green - scarce
- ___ 317. **Zippered Loop small size finger lamp - marigold - 3 1/2" base, 4 1/2" high, super nice, highly desirable**
- ___ 318. Fishscale & Beads 7" plate - purple - a beauty
- ___ 319. **Orange Tree ruffled fruit bowl - amethyst - interior is fantastic, rare color**
- ___ 320. Octagon 7 pc. wine set - marigold
- ___ 321. **Three Row vase - marigold - extremely rare, not often sold**

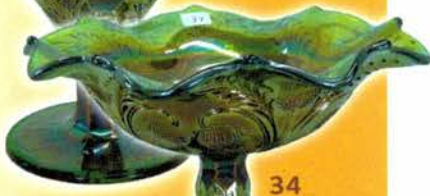
- ___ 322. M'burg Rays & Ribbons crimped edge ruffled bowl - marigold - radium
- ___ **323. CR Ashtray - blue**
- ___ 324. Vining Leaf large spittoon - marigold - rare
- ___ 325. Horse Medallion ftd ruffled bowl - blue - large chip on base
- ___ 326. Horse Medallion ftd ruffled bowl - marigold
- ___ 327. Leaf Swirl compote - teal
- ___ 328. Wreath of Roses bonbon - amethyst
- ___ 329. Illusion bonbon - blue
- ___ 330. Fenton Flute 9" vase - green
- ___ **331. Queens Lamp - green - very rare, has a clear shade with the Queen's pattern on it**
- ___ 332. N's Eight Sided bushel basket - green
- ___ 333. Orange Tree water pitcher - blue - feet look good
- ___ **334. Octagon cordial - marigold - scarce**
- ___ **335. Rose Garden 8" milk pitcher - marigold - Brockwitz, scarce**
- ___ 336. Diamond Ring ruffled bowl - smoke
- ___ 337. Band of Roses water pitcher - marigold - rare pitcher, bottom marked Piccardo
- ___ 338. Band of Roses tumbler - marigold
- ___ **339. Horse Medallion 7" plate - powder blue - super pretty plate**
- ___ 340. N's Dandelion tumblers (2) - purple
- ___ 341. Acorn Burrs punch bowl base - green - if you need it, it is a nice one
- ___ 342. Blackberry Open Edge ruffled hat - red - nice
- ___ 343. Dragon & Lotus deep round spt ftd bowl - blue
- ___ 344. Leaf Rays ruffled nappy - purple
- ___ **345. Wishbone 9" ftd plate - marigold - scarce color, nice**
- ___ **346. Inverted Feather 8" ruffled vase - light marigold - haven't seen one of these before, very unique**
- ___ **347. Wishbone & Spades 6" plate - peach opal - nice**
- ___ **348. Rose Show ruffled bowl - marigold - very pretty**
- ___ 349. M'burg Primrose ruffled bowl - green - satin
- ___ 350. Sunflower & Diamond 9" vase - marigold
- ___ 351. Lot of 6 Inverted Strawberry small berry bowls-green - one has chip on base
- ___ 352. Inverted Strawberry small berry bowl - amethyst
- ___ **353. Stippled Three Fruits ruffled bowl w/ribbed back - aqua opal - super pretty w/great opal**
- ___ 354. Butterflies bonbon - green
- ___ 355. Peacock & Grape 3 in 1 edge bowl - amethyst - pretty
- ___ 356. Peacock & Grape 3 in 1 edge bowl - marigold - also pretty
- ___ **357. Grape & Cable candlestick - green**
- ___ 358. Blackberry Bramble ruffled compote - green
- ___ **359. Two Flowers giant rose bowl - blue - fantastic irid. on inside of bowl, rare**
- ___ **360. Butterfly ribbed back bonbon - marigold - hard color to get, nice**
- ___ 361. Four Pillars 9 1/2" vase - amethyst - scarce, small flake on one toe
- ___ 362. Palm Beach creamer & cvd sugar - honey amber - scarce, nice
- ___ 363. Heisey creamer & under tray - powder blue
- ___ 364. Inverted Feather punch cup - green
- ___ 365. Star & Fan decanter & stopper - blue
- ___ 366. Luster Rose fernery - lavender - scarce color, chip on outside edge
- ___ 367. Luster Rose fernery - powder blue - nice
- ___ **368. Fashion water pitcher - purple - fantastic, very rare**
- ___ 369. Acorn 7" ruffled bowl - lime green
- ___ 370. Scroll Embossed lg size compote - marigold
- ___ 371. Basketweave Open Edge 2 sides up basket - red - scarce
- ___ 372. Basketweave Open Edge 2 sides up basket - marigold
- ___ **373. Spector's Department Store Heart & Vine 9" plate - marigold - super pretty, as nice as they get**
- ___ **374. Daisy & Drape flared out vase - blue - very scarce, nice**
- ___ **375. Inverted Feather wine - marigold - very rare miniature, neat**
- ___ 376. Serpentine Rose creamer - marigold
- ___ 377. Beaded Bullseye 7" vase - marigold
- ___ 378. Pineapple rose bowl - marigold
- ___ **379. Inverted Thistle 7 pc. water set - purple - fabulous set!**
- ___ 380. Set of 3 matching etched lampshades - marigold
- ___ 381. Lion IC shaped bowl - blue
- ___ **382. Panther ftd round sauce - amethyst - pretty, scarce color**
- ___ 383. Fisherman's mug - purple - pinpoint on base
- ___ 384. Triad & Basketflower hatpins - dark
- ___ **385. Nippon 9" plate w/BW back - green - super pretty irid. on a rare plate**
- ___ **386. Loganberry vase - clambroth - super pastel irid., rare color**
- ___ 387. Grape & Cable 9" plate w/BW back - marigold - chip on back of point
- ___ 388. Lot of 7 flower frogs
- ___ 389. Lot of misc. Carnival Glass - gravy boat has damage
- ___ 390. Fenton Poppy Show vase - Burmese - contemporary
- ___ 391. Fenton Poppy Show vase - green - contemporary
- ___ 392. Fenton Poppy Show vase - irid. milk glass - contemporary
- ___ 393. Fenton Poppy Show vase - aqua opal - 100 year anniversary
- ___ 394. Fenton Poppy kerosene lamp - red
- ___ 395. Imperial Grape milk pitcher - smoke - marked IG
- ___ 396. Lot of 3 toothpicks - contemporary
- ___ 397. Grape & Lattice 7 pc. water set - red - Gibson, contemporary
- ___ 398. Grape & Lattice 7 pc. water set - vaseline opal - Gibson, contemporary
- ___ 399. Hen on Nest - black amethyst - Levay, contemporary
- ___ 400. Kaleidoscope 9 3/4" vase - smoke - LGW, contemporary
- ___ 401. Fenton 2005 HOACGA decorated Guest Set - blue - decorated by L. Everson
- ___ 402. Fenton Peacock vase - vaseline opal - not iridized, contemporary
- ___ 403. Fenton Peacock vase - green - contemporary
- ___ 404. Elks paperweights - one blue, one red - contemporary
- ___ 405. Fenton's Stippled Grape & Cable humidior - red - contemporary
- ___ 406. Fenton Berry 6 1/2" vase - red - contemporary
- ___ 407. Covered Camel - blue - Summit, contemporary
- ___ 408. 1976 HOACGA 7 pc. whiskey set - red
- ___ 409. Lot of 3 pcs. contemporary glass
- ___ 410. Lot of 2 tumble ups - red & lavender

Seeck Auctions
PO Box 377
Mason City, Iowa
50402

PRESORTED
FIRST CLASS MAIL
US POSTAGE
PAID
MAIL EXPEDITORS



52



34

Carnival Glass
2013 Auction
Sat. Aug. 10, 9:30 a.m.
Senior Activity Center
326 4th St. NE
Mason City, Iowa



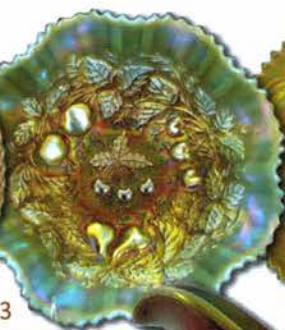
110



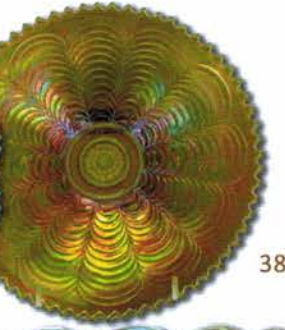
78



91



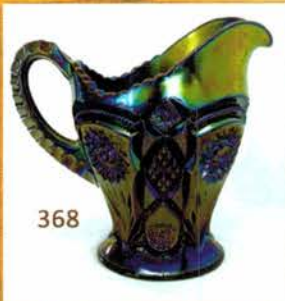
353



385



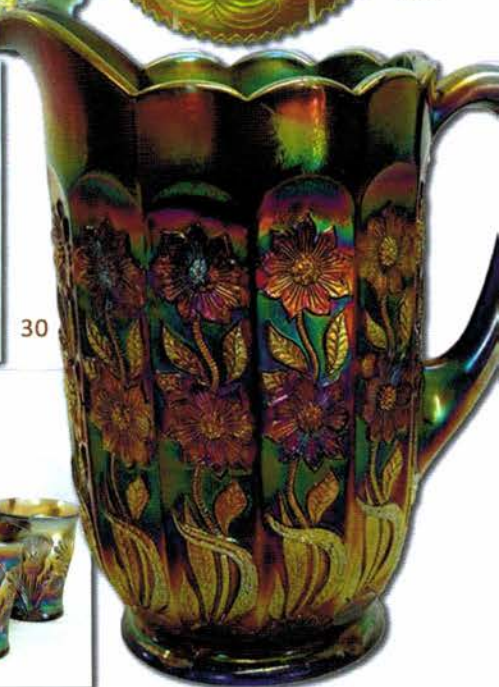
207



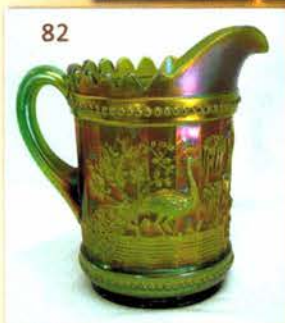
368



134



30



82



100



379