

Lincoln Land Carnival Glass  
Club Convention

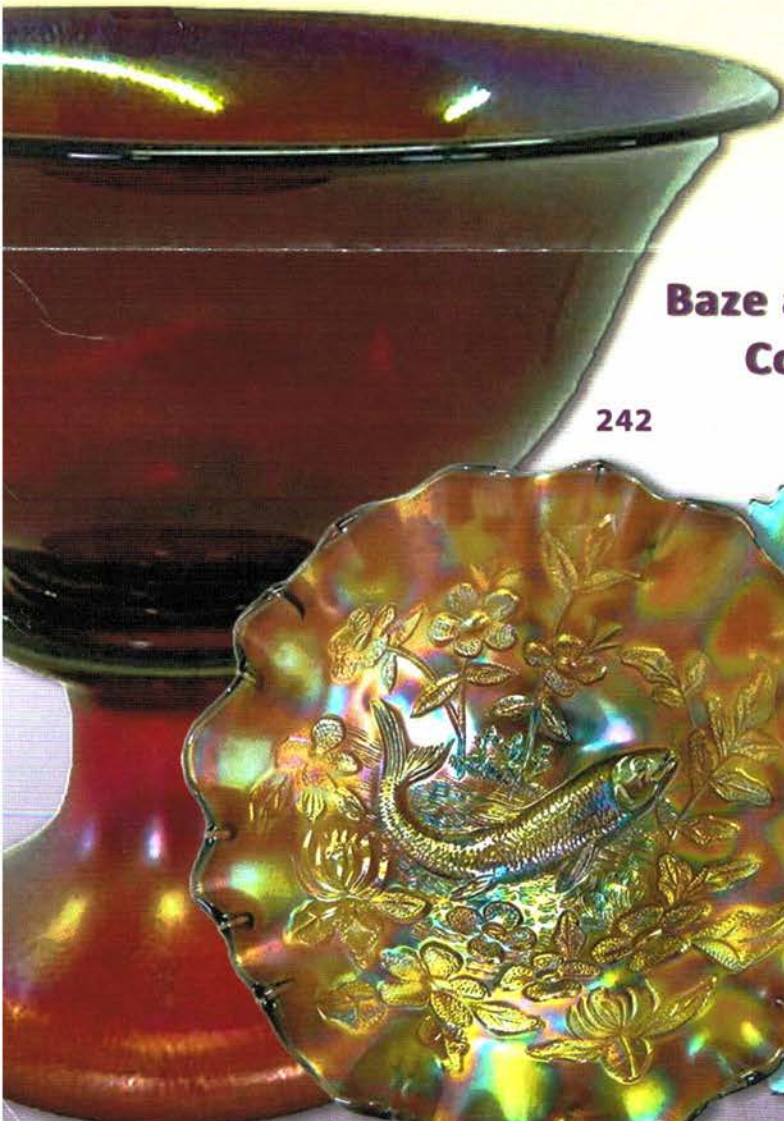
# Carnival Glass

## 2013 AUCTION

Saturday, June 1, 9:30 a.m.

Milwaukee, Wisconsin  
Best Western  
Airport Hotel

145



242



10

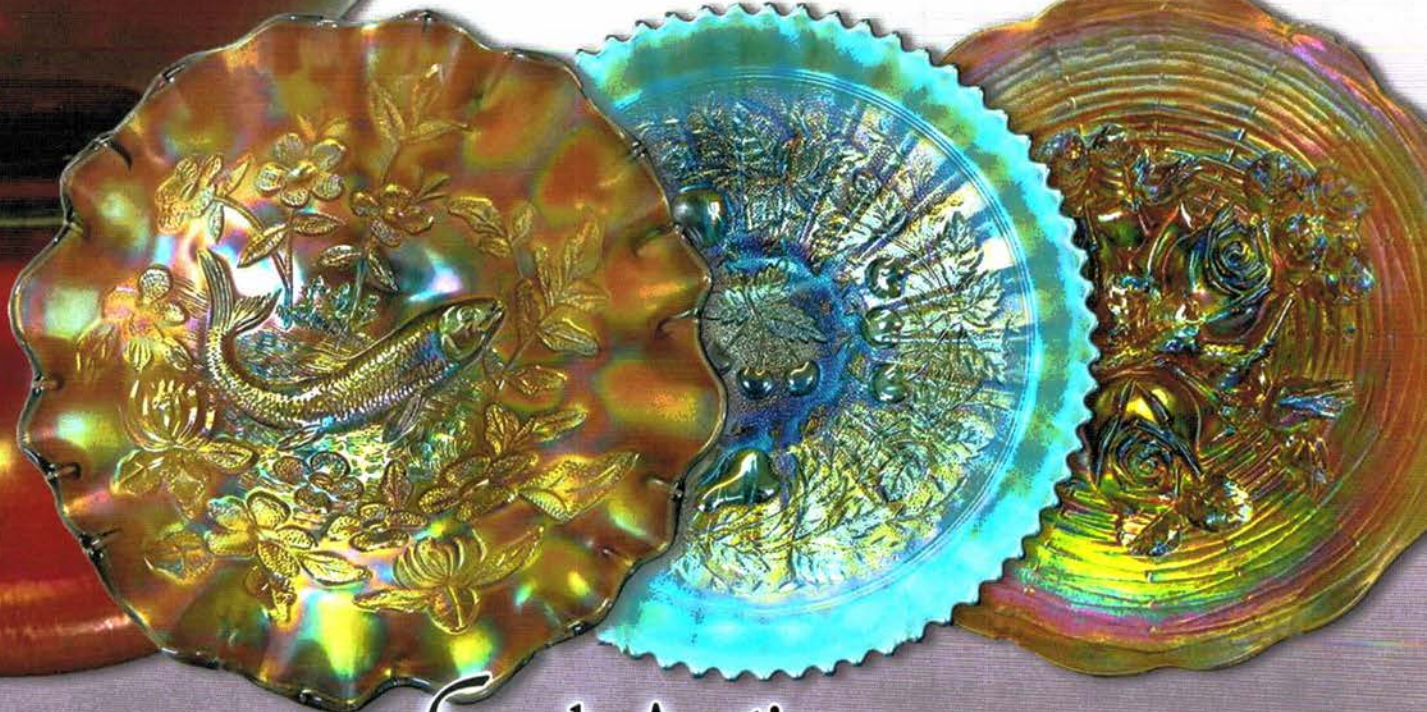
112

45

The  
Baze and Henecke  
Collections

120

13



JIM & JAN SEECK

Seeck Auctions

641-424-1116

---

# Carnival Glass

---

# Auction

JIM & JAN SEECK

641-424-1116

Saturday, June 1, 2013 - 9:30 AM

Best Western Airport Hotel—Milwaukee, Wisconsin

NO BUYER'S PREMIUM OPEN TO THE PUBLIC

For our Online Auction Catalog, check our website: [www.seeckauction.com](http://www.seeckauction.com)

\*Absentee bidding is available on-line through Auction Flex using our online catalog

Absentee bidding closes at 6 p.m. Friday, May 31, CST

e-mail: [jimjan@seeckauction.com](mailto:jimjan@seeckauction.com)

Please email us and we will put you on our email mailing list for auction notices.

Seeck Auctions is pleased to be selling the Dorothy and Bob Baze collection from Texas and the Harold Henecke Estate from Iowa at the Lincoln Land convention auction this year. All collectors will enjoy

this auction for the variety and quality of the glass. We look forward to this chance to seeing you at the Lincoln Land club convention.

Lincoln Land Convention info: Contact President Kenda Jeske at 815-899-3442 or [kendajoy@frontier.net](mailto:kendajoy@frontier.net). If staying at the Best Western Hotel, for reservations please call 414-769-2100

Terms: Cash or Check, VISA, MasterCard & Discover accepted w/proper ID. 4% Clerking Fee on all purchases except for payment of cash or check. Announcements made day of sale take precedence over any printed information.

---

## We have 3 options for absentee bidding:

---

### 1) If you DO NOT have internet access or access to our website, you can:

Call us by phone to enter your bids at (641)424-1116 OR By sending the numbers of the item(s) desired and the amount bid on each to: Seeck Auctions, PO Box 377, Mason City, Iowa 50402. (The mail has not been very dependable. We would prefer you call us with your bids rather than send them in a letter.)

- All written and called in bids will be entered into the online catalog by us.
- Have all bids in by **Thurs., May 30.**

### 2) Enter your bids from our website into our online catalog through the Auction Flex system.

- ◆ When you get to the online catalog, you will need to login as a bidder. For the first time you will need to **set up your account** by creating a user name and password. This will include filling out a form with your name, address, etc. You will also need to **register for the auction** which will ask you to enter a valid credit card number. This card will be validated by a \$1 charge to your card. This will only happen once and you will now be able to enter bids through our online catalog by just logging in with your user name and password.
- ◆ You will use this user name and password for all our auctions. You are not required to pay by credit card if you are successful. This is just a safeguard for us if someone does not pay. We will let you know what you owe us through an email and you can decide how you would like to pay us.
- ◆ An exciting advantage of entering your bids online yourself, is the option to be notified by email if you are outbid on an item. You will know when you are outbid on an item and you can increase your bid on that item or bid on something else. **There will be a cutoff date and time for entering your bids online.** After this time has passed, you will not be able to enter your bids from our online catalog. **Online absentee bidding closes, Friday, May 31, at 6 p.m. CST**
- ◆ Remember that just because you are the high bidder in the online catalog, this does not mean you have won the item. Your bid will still need to beat the floor bidders and live phone bidders. This system will run our absentee bids just as we did before. You will still be able to buy the item lower than your online bid unless someone on the floor bids you higher.

### 3) Live phone bidding is available on pieces with an estimated sale price of \$500 or more. If you would like to participate in live phone bidding, contact us **before the auction by Tuesday, May 28.** We will need to know the lot# and the phone number that you can be reached at on the day of the auction. We will also need your home phone number if different than the above number. Please call with questions: 641-424-1116.

There is a \$7 handling charge for each successful bid. Shipping and insurance charges are additional. Bidders will be notified by phone/email if their bid(s) are successful.

This will be done 1 - 3 days after the auction.

BID INCREMENTS: \$1 - \$100/\$5    \$100 - \$200/\$10    \$200 - \$700/\$25    \$700 - \$1,500/\$50  
\$1,500 - \$3,000/\$100    \$3,000+ Auctioneer's Discretion

---

- \_\_\_ 1. Diamond Point 10 1/2" vase - green
- \_\_\_ 2. Diamond Point 10 1/2" vase - amethyst
- \_\_\_ 3. Imperial Grape hdd basket - marigold
- \_\_\_ 4. Hattie deep round bowl - marigold - blank shape
- \_\_\_ 5. Fishscale & Beads 7" ruffled bowl - marigold
- \_\_\_ 6. Basketweave Open Edge JIP basket - marigold
- \_\_\_ 7. Coin Dot 3 in 1 edge 9" bowl - green
- \_\_\_ 8. Double Dutch ftd deep round bowl - marigold - minor pinpoints on feet
- \_\_\_ 9. Coin Spot ruffled compote - marigold
- \_\_\_ **10. M'burg Mitered Ovals vase - amethyst - extremely rare & super pretty, a M'burg classic!**
- \_\_\_ 11. Peacock Tail 7" IC shaped bowl - green
- \_\_\_ 12. Star of David & Bows dome ftd deep ruffled bowl - amethyst - minor roughness on base
- \_\_\_ **13. Rose Show 9" plate - amethyst - super pretty plate, the roses are cvd with pretty irid., scarce color**
- \_\_\_ **14. Rose Show 9" plate - marigold - lots of beautiful yellow irid.**
- \_\_\_ 15. Grape Delight rose bowl - purple
- \_\_\_ 16. Round Up 9" plate - peach opal - super pretty, repaired chip on point
- \_\_\_ **17. Round Up 9" plate - blue - scarce, nice**
- \_\_\_ 18. Little Bo Peep ABC child's dish - marigold - scarce
- \_\_\_ **19. Acorn Burrs 7 pc. water set - purple - super pretty set**
- \_\_\_ 20. Dragon & Lotus 3 in 1 edge bowl - blue - small nick on back edge
- \_\_\_ 21. Dragon & Lotus 3 in 1 edge bowl - marigold
- \_\_\_ 22. Holly IC shaped bowl - amethyst
- \_\_\_ **23. Good Luck 9" plate w/ribbed back - green - super pretty example, a dandy!**
- \_\_\_ **24. Good Luck 9" plate w/BW back - purple - also pretty**
- \_\_\_ **25. Good Luck 9" plate w/BW back - marigold - scarce**
- \_\_\_ 26. Peacock at Urn ruffled compote - blue
- \_\_\_ 27. Imperial Swirl vase - smoke
- \_\_\_ **28. Captive Rose 9" plate - green - scarce color**
- \_\_\_ **29. Captive Rose 9" plate - blue - silvery**
- \_\_\_ **30. Captive Rose 9" plate - marigold - super pretty**
- \_\_\_ 31. Butterfly & Berry master berry bowl - blue
- \_\_\_ 32. Butterfly & Berry 5 pc. berry set - marigold - one sauce has chip on foot
- \_\_\_ 33. Four Seventy Four milk pitcher - green
- \_\_\_ 34. Four Flowers 6" plate - peach opal
- \_\_\_ **35. M'burg Vintage IC shaped bowl w/Hobnail back - marigold - satin & super, very rare bowl**
- \_\_\_ 36. Persian Medallion ruffled sauce - powder blue - has marigold overlay
- \_\_\_ **37. Grape & Cable hatpin holder - green - nice**
- \_\_\_ 38. Grape & Cable hatpin holder - purple - nice
- \_\_\_ 39. Grape & Cable hatpin holder - marigold
- \_\_\_ **40. Stippled Peacocks 9" plate w/ribbed back - blue - very scarce & highly desirable**
- \_\_\_ **41. Stippled Peacocks 9" plate w/ribbed back - marigold - nice**
- \_\_\_ 42. Vintage powder jar - marigold
- \_\_\_ **43. Orange Tree 8 pc. ruffled punch set - blue - scarce, nice**
- \_\_\_ 44. Orange Tree 10 pc. round punch set - marigold - one cup with nick
- \_\_\_ **45. Daisy & Drape vase - green - impossible to find in green, super pretty, came from the Phillip's collection**
- \_\_\_ **46. Daisy & Drape vase - amethyst - very pretty, scarce**
- \_\_\_ 47. Double Scroll candlesticks - smoke
- \_\_\_ 48. Ripple 9 1/2" vase - purple - 3 3/8" base, tiny pinpoint on back top edge
- \_\_\_ 49. Ripple 8 1/2" vase - marigold - 2 7/8" base
- \_\_\_ **50. Leaf Chain 9" plate - blue - scarce color, nice**
- \_\_\_ **51. Leaf Chain 9" plate - marigold - pretty irid. with stretch effect**
- \_\_\_ 52. Leaf Chain 9" plate - white - very pretty, also has stretch effect
- \_\_\_ 53. Three Fruits Medallion spt ftd ruffled bowl - purple
- \_\_\_ 54. Paneled Dandelion tankard water pitcher - green - has crack near handle
- \_\_\_ 55. Paneled Dandelion tumbler - green
- \_\_\_ 56. Grape & Cable turned in centerpiece bowl - purple - large chip on foot
- \_\_\_ 57. Persian Garden 11" IC shaped bowl - white - super pretty
- \_\_\_ 58. Persian Garden IC sauce - white - pretty
- \_\_\_ **58a. Town Pump - green - super rare color, highly desirable & nice**
- \_\_\_ **59. Town Pump - purple - very pretty example**
- \_\_\_ 60. Fenton's Fine Rib 8 3/4" vase - vaseline - has marigold overlay, scarce color
- \_\_\_ **61. Peacocks 9" plate w/ribbed back - blue - electric & super!**
- \_\_\_ **62. Peacocks 9" plate w/ribbed back - amethyst - super pretty**
- \_\_\_ **63. Peacocks 9" plate w/ribbed back - ice green**
- \_\_\_ **64. Peacocks 9" plate w/ribbed back - white**
- \_\_\_ 65. Vintage 3 in 1 edge 9" bowl - marigold - tiny pinpoint on base
- \_\_\_ **66. Poppy Show ruffled bowl - marigold - very pretty example, a dandy**
- \_\_\_ 67. Fenton's Peacock at Urn 6 ruffled bowl - marigold - dark, nice
- \_\_\_ 68. Zippered Hearts ruffled sauce - purple
- \_\_\_ 69. Inverted Feather cracker jar - green - chips on lid and base
- \_\_\_ **70. Apple Tree 7 pc. water set - white - very hard to find set, nice**
- \_\_\_ 71. Beaded Shell mug - purple
- \_\_\_ **72. Holly 9" plate - amethyst - scarce, nice**
- \_\_\_ 73. Holly 9" plate - green - scarce color
- \_\_\_ 74. Holly 9" plate - white
- \_\_\_ 75. Holly 9" plate - blue
- \_\_\_ 76. Holly 9" plate - marigold - nice
- \_\_\_ **77. Holly ruffled compote - red - scarce**
- \_\_\_ 78. Holly ruffled compotes (3) - marigold
- \_\_\_ 79. Wild Strawberry 7 pc. ruffled berry set - purple - one berry bowl has chip on base
- \_\_\_ **80. Broken Arches 14 pc. punch set - purple - very scarce set, super**

- \_\_\_ 81. M'burg Whirling Leaves ruffled bowl - amethyst - satin, nick on edge
- \_\_\_ **82. Grape & Gothic Arches 7 pc. water set - blue - pitcher really nice, one tumbler with chip**
- \_\_\_ 83. Ski Star 11" ruffled bowl - peach opal
- \_\_\_ 84. M'burg Holly Sprig Variant crimped edge 8" ruffled bowl - marigold
- \_\_\_ **85. Hearts & Flowers ruffled bowl w/ribbed back - ice green - very pretty**
- \_\_\_ **86. Hearts & Flowers ruffled bowl w/ribbed back - ice blue - very pretty**
- \_\_\_ **87. Hearts & Flowers ruffled bowl w/plain back - white - nice**
- \_\_\_ 88. Grape & Cable master berry bowl - marigold - small minor nick on top of one point
- \_\_\_ 89. Persian Medallion 9" ruffled bowl - amethyst - scarce color
- \_\_\_ 90. Strawberry 9" plate w/plain back - green
- \_\_\_ 91. Strawberry 9" plate w/BW back - purple
- \_\_\_ 92. Strawberry 9" plate w/BW back - marigold
- \_\_\_ 93. M'burg Hobnail Swirl rose bowl - amethyst - satin, has crack in the side
- \_\_\_ 94. Orange Tree IC shaped bowl - blue
- \_\_\_ **95. M'burg Hanging Cherries 7 1/2" plate -marigold- extremely rare plate, satin & very nice!**
- \_\_\_ 96. Persian Medallion 6" plate - lime green - has marigold overlay, rare & nice
- \_\_\_ 97. Persian Medallion 6" plate- lime green- has marigold overlay, has manufacture burnt spot on point
- \_\_\_ 98. Persian Medallion 6" plate - marigold
- \_\_\_ 99. Grape & Cable Variant ruffled bowl w/plain back - purple
- \_\_\_ **100. Imperial Grape punch bowl & base - amber - very rare color, nice, much rarer than the purple**
- \_\_\_ 101. Cosmos 10" ruffled bowl - marigold
- \_\_\_ **102. Persian Medallion bonbon - red - scarce**
- \_\_\_ 103. Persian Medallion bonbon - lime green - nice
- \_\_\_ 104. Persian Medallion bonbon - marigold
- \_\_\_ 105. Hearts & Flowers ruffled compote - aqua opal - butterscotch & pretty, minor polishing on flat of base
- \_\_\_ 106. Hearts & Flowers ruffled compote - marigold
- \_\_\_ 107. Hearts & Flowers ruffled compote - white
- \_\_\_ 108. Fenton Peacock at Urn 8 ruffled bowl - amethyst - super pretty, nick on base
- \_\_\_ 109. Round Up IC shaped bowl - peach opal - nice
- \_\_\_ 110. Round Up IC shaped bowl - white - very pretty
- \_\_\_ 111. Round Up IC shaped bowl - marigold - nice
- \_\_\_ **112. Corn vase w/stalk base - marigold - dark & super, a beautiful one!**
- \_\_\_ **113. Corn vase w/stalk base - purple - scarce**
- \_\_\_ **114. Corn vase w/stalk base - ice green - nice**
- \_\_\_ **115. Corn vase w/stalk base - white**
- \_\_\_ 116. Orange Tree ftd ruffled master berry bowl - marigold has typical nicks on feet
- \_\_\_ 117. Strawberry ruffled bowl w/BW back - green
- \_\_\_ 118. Strawberry ruffled bowl w/BW back - purple
- \_\_\_ 119. Strawberry ruffled bowl w/BW back - marigold
- \_\_\_ **120. Stippled Three Fruits 9" plate w/ribbed back - aqua opal - pastel & super, beautiful piece**
- \_\_\_ **121. Stippled Three Fruits 9" plate w/ribbed back - marigold - super nice**
- \_\_\_ 122. Dugan Peacock at the Fountain 6 pc. water set- blue- scarce
- \_\_\_ 123. Fenton Three Fruits 12 sided plate - green
- \_\_\_ 124. Good Luck PCE bowl w/ribbed back - blue - super pretty w/electric irid.
- \_\_\_ 125. Good Luck PCE bowl w/ribbed back - purple - super pretty
- \_\_\_ 126. Good Luck PCE bowl w/ribbed back - marigold - dark, super
- \_\_\_ 127. Dragon & Lotus IC shaped spt ftd bowl - marigold - nice
- \_\_\_ **128. Grape & Cable giant compote - purple - this is a very nice one!**
- \_\_\_ 129. Poppy Variant 7" ruffled bowl - green
- \_\_\_ **130. Greek Key 9" plate w/BW back - marigold - super nice w/great mold work & irid.**
- \_\_\_ 131. Thistle CRE bowl - amethyst
- \_\_\_ **132. Acorn ruffled bowl - red - scarce, nice**
- \_\_\_ 133. Floral & Grape 7 pc. water set - blue - one tumbler has polished base
- \_\_\_ 134. Floral & Grape water pitcher - amethyst
- \_\_\_ 135. Fenton's Flowers rose bowl - white - pretty, minor nick on toe
- \_\_\_ **136. Orange Tree 9" plate - marigold - nice**
- \_\_\_ 137. Orange Tree 9" plate - white - nice
- \_\_\_ 138. Peacock & Grape spt ftd IC shaped bowl - green - pretty
- \_\_\_ 139. Fenton Stippled Rays 9" CRE bowl - amethyst
- \_\_\_ **140. Poppy Show 9" plate - marigold - very pretty, heat check in base**
- \_\_\_ **141. Poppy Show 9" plate - white - pretty example**
- \_\_\_ 142. Fruits & Flowers bonbon - blue
- \_\_\_ 143. Tiger Lily 7 pc. water set - green
- \_\_\_ 144. Two Flowers lg size IC shaped ftd bowl - marigold - nice
- \_\_\_ **145. Stretch Glass punch bowl & base - red - irid. on the inside of bowl only, gorgeous piece of glass, rare!**
- \_\_\_ 146. Leaf & Beads 9" dome ftd ruffled bowl - green
- \_\_\_ **147. Round Up ruffled bowl - purple - super pretty**
- \_\_\_ **148. Round Up ruffled bowl - blue - nice**
- \_\_\_ **149. Round Up ruffled bowl - peach opal - nice**
- \_\_\_ **150. Round Up ruffled bowl - white - pretty**
- \_\_\_ 151. Little Flowers deep round sauce - amethyst
- \_\_\_ 152. Grape & Cable 9" plate w/BW back - purple
- \_\_\_ 153. Stream of Hearts ruffled compote - marigold
- \_\_\_ **154. Heavy Grape chop plate - purple - scarce, nice**
- \_\_\_ 155. Fashion 10 pc. punch set - marigold
- \_\_\_ **156. Vintage 7" plate - blue - super**
- \_\_\_ **157. Grape & Cable punch cup - aqua opal - rare, super!**
- \_\_\_ 158. Cherry Chain 6" plate - marigold
- \_\_\_ **159. Nippon PCE bowl w/ribbed back - purple - super pretty**
- \_\_\_ 160. Vintage fernery - green - chip on top edge
- \_\_\_ 161. Vintage fernery - blue
- \_\_\_ 162. Vintage fernery - marigold

- \_\_\_ **163. Stippled Strawberry ruffled bowl w/BW back - amber/horehoundish - odd color, very pretty, neat piece!**
- \_\_\_ 164. April Showers 11" vase - blue
- \_\_\_ 165. Panther master berry bowl & one sauce - marigold
- \_\_\_ 166. Grape & Cable hatpin holder - purple
- \_\_\_ 167. Wild Rose open edge deep ftd dish - green
- \_\_\_ **168. Acorn Burrs butter dish, cvd sugar & spooner - purple - lid sugar has small nick on inner rim**
- \_\_\_ 169. Peacock Tail round sauce - amethyst
- \_\_\_ 170. Grape & Cable 7 pc. water set - purple - one tumbler has chip on base, nice
- \_\_\_ 171. Garland rose bowl - blue
- \_\_\_ 172. Fine Cut & Roses rose bowl - ice blue - typical small chip on foot
- \_\_\_ 173. Fine Cut & Roses rose bowl - purple - has plain interior
- \_\_\_ 174. Starfish compote - purple
- \_\_\_ **175. Concord 9" plate - amethyst - scarce, nice**
- \_\_\_ **176. Concord 9" plate - marigold - hardest color to find**
- \_\_\_ 177. Imperial Grape 6" plates (2) - marigold
- \_\_\_ **178. Oriental Poppy 7 pc. water set - purple**
- \_\_\_ 179. Holly ruffled hatshape - marigold
- \_\_\_ **180. Singing Birds mug - ice blue - very scarce color, nice**
- \_\_\_ 181. Stippled Singing Birds mug - marigold
- \_\_\_ 181a. Singing Birds mug - purple
- \_\_\_ 182. Peacock & Grape ruffled bowl - lime green - scarce color
- \_\_\_ 183. Peacock & Grape ruffled bowl - blue - silvery
- \_\_\_ 184. Peacock & Grape ruffled bowl - blue - pretty
- \_\_\_ 185. Chrysanthemum lg size IC shaped ftd bowl - green - eraser sized spot of missing irid. in center, green is tough to find
- \_\_\_ 186. Pansy ruffled bowl - green
- \_\_\_ **187. Daisy Cut bell - marigold - scarce**
- \_\_\_ 188. Stag & Holly lg size IC shaped ftd bowl - blue - couple of rough spots on points
- \_\_\_ 189. Pony ruffled bowl - marigold
- \_\_\_ 190. Ftd Orange Tree 7 pc. water set - blue - pitcher has chips on feet, tumblers good
- \_\_\_ 191. Ripple 11 1/2" vase - marigold - has 2 7/8" base
- \_\_\_ 192. Orange Tree hatpin holder - blue
- \_\_\_ 193. Grape & Cable sherbet & small berry bowl - purple
- \_\_\_ **194. Peacocks ruffled bowl w/ribbed back- aqua opal- scarce, nice**
- \_\_\_ 195. Strawberry bonbon - powder blue - has marigold overlay - scarce color
- \_\_\_ 196. Grape & Cable PCE salad bowl - purple - very scarce bowl, highly desired
- \_\_\_ 197. Fenton's Grape & Cable 7" ruffled bowl - marigold
- \_\_\_ **198. Stippled Grape & Cable Variant/Old Rose Distilling 9" plate w/ribbed back - green - scarce & desirable**
- \_\_\_ 199. Diamond Rib 8" squatty vase - green
- \_\_\_ **200. Wishbone PCE 10" bowl w/BW back - blue- electric & super, a beautiful bowl, very minor pinpoint on base**
- \_\_\_ 201. Orange Tree wine goblet - green - rare color
- \_\_\_ 202. Stag & Holly lg size ftd ruffled bowl - marigold - pretty
- \_\_\_ **203. Open Rose 9" plate - purple - very scarce, has some roughness & peeling around collar base**
- \_\_\_ **204. Open Rose 9" plate - amber - nice**
- \_\_\_ 205. Knotted Beads 9" vase w/crimped top - blue
- \_\_\_ **206. Peacocks PCE bowl w/ribbed back - purple - scarce**
- \_\_\_ **207. Peacocks PCE bowl w/ribbed back - marigold - nice**
- \_\_\_ 208. Grape & Cable hatpin holder - purple
- \_\_\_ **209. Beaded Cable rose bowl - white - scarce color, nice**
- \_\_\_ **210. Beaded Cable rose bowl - aqua opal - butterscotch, nice**
- \_\_\_ 211. Three Fruits 9" plate w/BW back - purple
- \_\_\_ 212. Holly IC shaped bowl - marigold
- \_\_\_ **213. Blackberry Open Edge 2 sides up basket - red - scarce, nice**
- \_\_\_ 214. Four Pillars 10 1/2" vase - aqua opal - minor pinpoint on one foot
- \_\_\_ 215. Luster Rose 7 pc. water set - marigold - 2 tumblers have nicks
- \_\_\_ **216. Wishbone & Spades 6" plate - purple - super pretty, a beauty**
- \_\_\_ 217. Twins fruit bowl & base - marigold
- \_\_\_ 218. Vintage 3 in 1 edge bowl - green
- \_\_\_ 219. Vintage 3 in 1 edge bowl - marigold
- \_\_\_ 220. N's Bushel Basket - aqua opal - has chip on outside rope edge
- \_\_\_ 221. N's Bushel Basket - white - nice
- \_\_\_ 222. N's Bushel Basket - purple - nice
- \_\_\_ 223. N's Bushel Basket - marigold - nice
- \_\_\_ **224. Stippled Three Fruits PCE bowl w/ribbed back - blue - rare bowl, has electric highlights**
- \_\_\_ 225. Pipe novelty - marigold
- \_\_\_ 226. Leaf Columns 10" vase - purple - couple minor nicks on base
- \_\_\_ 227. Garden Path Variant lg 11" ruffled bowl - white - has Soda Gold back, rare bowl & nice
- \_\_\_ 228. Three Fruits PCE bowl w/plain back - purple
- \_\_\_ 229. Diamond Rib 11" vase - amethyst
- \_\_\_ **230. Lotus & Grape 9" plate - green - minor heat check in base at seam, rare & pretty**
- \_\_\_ 231. Grape & Cable PCE bowl w/BW back - green
- \_\_\_ 232. Good Luck ruffled bowl w/ribbed back - purple - super pretty
- \_\_\_ 233. Good Luck ruffled bowl w/ribbed back - marigold - pretty
- \_\_\_ 234. Peacock Tail ruffled compote - marigold
- \_\_\_ **235. Tornado lg size vase - green - scarce, nice**
- \_\_\_ 236. Basketweave Open Edge 2 sides up basket - marigold
- \_\_\_ **237. Peacock at the Fountain fruit bowl - blue - very scarce, highly desirable, nice**
- \_\_\_ 238. Fenton's Flowers rose bowl - amethyst - silvery
- \_\_\_ 239. Fenton's Flowers rose bowl - white - slight polishing on feet

- \_\_\_ 240. **Vintage 10" ruffled bowl - red - very rare bowl, highly desirable, red irid. on outside edge**
- \_\_\_ 241. Double Dutch ftd round bowls (2) - marigold - one has minor nicks on feet
- \_\_\_ 242. **M'burg Big Fish 3 in 1 edge bowl - amethyst - satin, nice, rare**
- \_\_\_ 243. Diamond Rib 10 1/2" vase - amethyst
- \_\_\_ 244. Sunflower spt ftd ruffled bowl - marigold - super pretty
- \_\_\_ 245. Sunflower spt ftd ruffled bowl - green
- \_\_\_ 246. **Rose Show ruffled bowl - green - rare color, nice**
- \_\_\_ 247. Bo Peep mug - marigold
- \_\_\_ 248. **Stippled Three Fruits Medallion spt ftd ruffled bowl - aqua opal - scarce, nice**
- \_\_\_ 249. Imperial Grape punch cup & wine - purple
- \_\_\_ 250. Orange Tree powder jar - amethyst - very rare color plus nice
- \_\_\_ 251. Beaded Basket - amethyst
- \_\_\_ 252. **Peacocks 9" plate w/ribbed back - white - a very nice one**
- \_\_\_ 253. Wreath of Roses ruffled compote - blue
- \_\_\_ 254. **Tree Trunk 14" mid-size vase - purple - scarce, very nice**
- \_\_\_ 255. Blackberry Banded ruffled hatshape - marigold on moonstone - scarce color
- \_\_\_ 256. **Peacock at Urn 9" plate - marigold - nice**
- \_\_\_ 257. Wishbone ftd ruffled bowl - purple
- \_\_\_ 258. **Fanciful 9" plate - peach opal - super nice**
- \_\_\_ 259. Lot of 2 marigold pieces
- \_\_\_ 260. **Hearts & Flowers 9" plate w/ribbed back - amethyst - scarce, nice**
- \_\_\_ 261. Rustic 11" vase - marigold
- \_\_\_ 262. Persian Garden lg size IC shaped bowl - white - nice
- \_\_\_ 263. Lot of 6 Ftd Orange Tree tumblers - blue - two have chipped feet
- \_\_\_ 264. **Embroidered Mums ruffled bowl w/ribbed back - ice blue - very nice example, scarce**
- \_\_\_ 265. Fruits & Flowers ruffled sauce - purple
- \_\_\_ 266. **Raspberry milk pitcher - purple - scarce, desirable**
- \_\_\_ 267. **Raspberry milk pitcher - marigold**
- \_\_\_ 268. Holly & Smooth Rays compotes - marigold
- \_\_\_ 269. **Two Flowers spt ftd 9" plate - marigold - scarce, nice**
- \_\_\_ 270. Grape Leaves 3 in 1 edge bowl - marigold - scarce in 3 in 1 edge
- \_\_\_ 271. Tree Trunk 7 1/2" squatty vase - green
- \_\_\_ 272. **Coin Dot 8" plate - marigold - very rare plate in any color, this is the bowl flattened out**
- \_\_\_ 273. Heart & Vine deep 3 in 1 edge bowl - blue - nice
- \_\_\_ 274. **Stippled Peacocks 9" plate w/ribbed back - blue - scarce**
- \_\_\_ 275. Sailboat ruffled sauce & Apple Blossoms ruffled bowl marigold
- \_\_\_ 276. **Peacock at Urn master IC bowl - white - all points are cupped in, almost like they were trying to make a rose bowl**
- \_\_\_ 277. **Peacock at Urn master IC bowl - marigold - pretty**
- \_\_\_ 278. Holly 3 in 1 edge bowl - blue
- \_\_\_ 279. Birds & Cherries bonbon - marigold
- \_\_\_ 280. Lotus & Grape ruffled bowl - green
- \_\_\_ 281. Cosmos IC shaped bowl - marigold - also slightly cupped, unusual shape
- \_\_\_ 282. Three Fruits 9" plate w/BW back - purple
- \_\_\_ 283. M'burg Hanging Cherries IC shaped bowl - marigold - chip on base
- \_\_\_ 284. Orange Tree 9" plate - white
- \_\_\_ 285. Fenton Peacock at Urn round goblet shaped compote - blue - nice
- \_\_\_ 286. Scales IC shaped bowl - marigold on moonstone
- \_\_\_ 287. **Leaf & Beads rose bowl - aqua opal - butterscotch, nice**
- \_\_\_ 288. Fenton Peacock at Urn IC shaped bowl - marigold - nice
- \_\_\_ 289. Dragon & Lotus ruffled bowl - blue
- \_\_\_ 290. Dragon & Lotus ruffled bowl - marigold - minor pinpoint on base
- \_\_\_ 291. **N's Peacock at the Fountain water pitcher - purple - scarce, nice**
- \_\_\_ 292. N's Peacock at the Fountain tumbler - purple
- \_\_\_ 293. Grape & Cable sweetmeat - purple
- \_\_\_ 294. Fenton's Fine Rib 12" vase - marigold
- \_\_\_ 295. **Horse Medallion ftd ruffled bowl - blue - nice**
- \_\_\_ 296. Butterfly & Berry 10" vase - marigold
- \_\_\_ 297. Grape & Cable hatpin holder - purple
- \_\_\_ 298. Waterlily ftd ruffled master berry bowl - marigold - minor chip on point
- \_\_\_ 299. Stippled Good Luck ruffled bowl w/ribbed back - blue
- \_\_\_ 300. Persian Garden 6" plate - white - has Pool of Pearls back
- \_\_\_ 301. Octagon round bowl & Grape sandwich tray - marigold
- \_\_\_ 302. Wishbone 10" ruffled bowl w/BW back - purple - minor nick on point
- \_\_\_ 303. Leaf Rays nappy - peach opal
- \_\_\_ 304. Apple Blossom Twigs IC shaped bowl - marigold
- \_\_\_ 305. Lot of 7 marigold Fenton tumblers - Butterfly & Berry and Lattice & Grape have damage
- \_\_\_ 306. **Acorn Burrs 7 pc. water set - purple - scarce**
- \_\_\_ 307. Peacock at the Urn compote & Octagon goblet - marigold
- \_\_\_ 308. Blackberry Spray ruffled hatshape - red - nice
- \_\_\_ 309. Holly ruffled bowl - marigold
- \_\_\_ 310. **Poppy Show ruffled bowl - marigold - scarce, nice**
- \_\_\_ 311. Raspberry tumbler - purple, Rambler Rose tumbler - blue and S.C.G.C. Feathered Scroll tumbler (contemporary) - blue
- \_\_\_ 312. Stag & Holly IC shaped spt ftd bowl - green
- \_\_\_ 313. Stippled Rays bonbon - green
- \_\_\_ 314. **Concord ruffled bowl - marigold - dark, pretty**
- \_\_\_ 315. Blackberry Bramble ruffled compote - amethyst - minor pinpoint on base
- \_\_\_ 316. Grape & Cable cracker jar - marigold - tiny pinpoint on inner rim of base
- \_\_\_ 317. Hattie round bowl - marigold
- \_\_\_ 318. **Drapery rose bowl - aqua opal - butterscotch, nice**

- \_\_\_ 319. Small Ftd Shell - amethyst and Swan Salt - celeste
- \_\_\_ **320. Peacock & Grape 9" plate - marigold - pretty**
- \_\_\_ 321. Vintage ruffled sauce - amethyst
- \_\_\_ 322. N's Peacock at Urn IC sauce - blue
- \_\_\_ 323. N's Peacock at Urn IC sauce - white
- \_\_\_ 324. Dugan Cherries ftd ruffled bowls (2) - marigold - one has nick on foot
- \_\_\_ 325. Ribbon Tie 3 in 1 edge bowl - blue - silvery, minor pinpoint on edge
- \_\_\_ 326. Grape & Cable butter dish - purple - finial cracked & glued
- \_\_\_ 327. Apple Blossom ruffled bowl & Question Mark bonbon - both marigold
- \_\_\_ 328. Leaf Chain 9" plate - white - nice
- \_\_\_ 329. Fine Cut & Roses rose bowl - ice blue - minor nick on foot
- \_\_\_ 330. Fanciful 3 in 1 edge bowl - peach opal
- \_\_\_ 331. Blackberry Open Edge ruffled basket - powder blue - no marigold overlay
- \_\_\_ **332. M'burg Leaf & Little Flowers sherbet shaped compote - marigold - nice, radium**
- \_\_\_ 333. Lot of 8 marigold tumblers - Stork & Rushes damaged
- \_\_\_ **334. Corn vase w/stalk base - ice green - scarce**
- \_\_\_ **335. Corn vase w/plain base - white - scarce**
- \_\_\_ 336. Acorn Burrs berry dish and Fishscale & Beads ruffled bowl - both marigold
- \_\_\_ 337. Four Flowers 6" plate - peach opal
- \_\_\_ **338. Rose Show ruffled bowl - aqua opal - nice, scarce**
- \_\_\_ 339. Horse Medallion 7" plate - marigold - nice
- \_\_\_ 340. Grape & Cable spt ftd 9" plate - amethyst
- \_\_\_ 341. Orange Tree loving cup - marigold - crack around top of one handle
- \_\_\_ 342. April Showers 12 1/2" vase - marigold
- \_\_\_ 343. Persian Garden 6" plate - marigold
- \_\_\_ 344. Compote vase - marigold
- \_\_\_ 345. Stippled Rays 9" bowl & Smooth Rays compote - both green
- \_\_\_ **346. Strawberry PCE bowl w/plain back - smoke - super rare & very pretty!**
- \_\_\_ 347. Star Medallion & Fan and Orange Tree mug - both marigold
- \_\_\_ **348. Butterfly & Berry hatpin holder - blue - extremely rare & highly desirable**
- \_\_\_ 349. Town pump - purple - cracked
- \_\_\_ **350. Wishbone & Spades chop plate - purple - fantastic piece of glass!**
- \_\_\_ 351. Ftd ruffled bowl - green opal - not Carnival Glass
- \_\_\_ 352. Corn vase - white opal - not Carnival Glass
- \_\_\_ 353. Tree Trunk 12" vase - blue opal - not Carnival Glass
- \_\_\_ 354. Tree Trunk 11" vase - white opal - not Carnival Glass
- \_\_\_ 355. Grape & Cable lg ruffled bowl - peach opal - contemporary
- \_\_\_ 356. Open Rose 10" 3 in 1 edge bowl - white - marked IG, contemporary
- \_\_\_ 357. Imperial Grape milk pitcher - white - marked IG, contemporary
- \_\_\_ 358. Luster Rose ftd 3 in 1 edge bowl - smoke - marked IG, contemporary
- \_\_\_ 359. Octagon ruffled compote - blue - marked IG, contemporary
- \_\_\_ 360. 1982 HOACGA corn vase - ice blue
- \_\_\_ 361. 1981 HOACGA Good Luck candle lamp - red
- \_\_\_ 362. 1976 HOACGA 7 pc. Good Luck whiskey set - red
- \_\_\_ 363. 1980 HOACGA Good Luck hatpin holder - ice green
- \_\_\_ 364. 1975 HOACGA 7 pc. Good Luck water set - red
- \_\_\_ 365. 1983 HOACGA Good Luck loving cup - marigold on custard
- \_\_\_ 366. 1979 HOACGA Good Luck loving cup - red
- \_\_\_ 367. Pair of Lincoln Land bells, souvenirs
- \_\_\_ 368. 1977 HOACGA Good Luck hatpin holder with pair of hatpins - red
- \_\_\_ 369. 1981 HOACGA Good Luck candle lamp - red
- \_\_\_ 370. 1976 HOACGA 7 pc. Good Luck whiskey set - red
- \_\_\_ 371. 1982 Lincoln Land rose bowl - aqua opal
- \_\_\_ 372. 1977 ICGA miniature Town Pump - red
- \_\_\_ 373. 1973 HOACGA Good Luck corn vase - red
- \_\_\_ 374. Lot of 5 pcs - all damaged

Seeck Auctions  
PO Box 377  
Mason City, Iowa  
50402

Presorted  
First Class Mail  
U.S. Postage  
Paid  
Mail Expeditors



100

58

2013 Auction  
Carnival Glass  
Sat., June 1,  
9:30 a.m.  
Milwaukee,  
Wisconsin

T4 P1 199  
LEE MARKLEY  
BOX 306  
MENTONE IN 46539-0306



35 130

175

80

346

264

246

95

350

320

163