

HEART OF AMERICA CARNIVAL GLASS  
ASSOCIATION CONVENTION

The Bekemeier and  
Hieger Collections

15

13

# CARNIVAL GLASS 2013 AUCTION

SATURDAY, APRIL 27, 9:30 A.M.

Kansas City, Mo.

Embassy Suites International  
Airport Hotel

80

10

26

48

33

JIM & JAN SEECK

Seeck Auctions

641-424-1116

**SATURDAY, April 27, 2013 — 9:30 A.M.**

**JIM & JAN SEECK**

**Embassy Suites Hotel-Kansas City, Mo.**

**641-424-1116**

**7640 NW Tiffany Springs Parkway**

**NO BUYER'S PREMIUM**

**OPEN TO THE PUBLIC**

***The Paul and Dee Bekemeier Collection & The Roy and Charlene Hieger Collection***

**For Online Auction Catalog, Check our Website: [www.seeckauction.com](http://www.seeckauction.com)**

**email: [jimjan@seeckauction.com](mailto:jimjan@seeckauction.com)**

**Online absentee bidding closes, Friday, April 26, at 6 p.m. CST**

Seeck Auctions is pleased to be auctioning the Bekemeier and Hieger collections at the HOACGA convention this year. These are two wonderful collections full of fantastic and beautiful glass. They are so different! This is what makes Carnival Glass collecting so fun. The Hieger's collection is largely composed of glass made by Imperial while the Bekemier's

collection is composed of the color red and aqua opal and also the pattern Orange Tree. This is a great combination of glass this year. Both couples have collected for many years and have put together outstanding collections. Don't miss the convention and auction this year as it will be fun and enjoyable for all!

**Visit the Heart of America Carnival Glass Association on the Internet at: [WWW.HOACGA.ORG](http://WWW.HOACGA.ORG)**

Reservations can be made by calling the hotel directly at 816-891-7788. Ask for reservations and mention the HOACGA Convention. If you have a problem or questions about reservations at the hotel or questions about the convention, please call Bob Grissom at: 816-356-5320.

**Terms:** Cash or Check, VISA, MasterCard & Discover accepted w/proper ID. **4% Clerking Fee** on all purchases except for payment of cash or check. Announcements made day of sale take precedence over any printed information.

**Please email us and we will put you on our email mailing list for auction notices.**

**We have 3 options for absentee bidding:**

**1) If you DO NOT have internet access or access to our website, you can:**

Call us by phone to enter your bids at (641)424-1116 **OR** By sending the numbers of the item(s) desired and the amount bid on each to: Seeck Auctions, PO Box 377, Mason City, Iowa 50402. (The mail has not been very dependable. We would prefer you call us with your bids rather than send them in a letter.)

- All written and called in bids will be entered into the online catalog by us.
- Have all bids in by **Thurs., April 25**

**2) Enter your bids from our website into our online catalog through the Auction Flex system.**

- ◆ When you get to the online catalog, you will need to login as a bidder. For the first time you will need to **set up your account** by creating a username and password. This will include filling out a form with your name, address, etc. You will also need to **register for the auction** which will ask you to enter a valid credit card number. This card will be validated by a \$1 charge to your card. This will only happen once and you will now be able to enter bids through our online catalog by just logging in with your user name and password.
- ◆ You will use this user name and password for all our auctions. You are not required to pay by credit card if you are successful. This is just a safeguard for us if someone does not pay. We will let you know what you owe us through an email and you can decide how you would like to pay us.
- ◆ An exciting advantage of entering your bids online yourself, is the option to be notified by email if you are outbid on an item. You will know when you are outbid on an item and you can increase your bid on that item or bid on something else. **There will be a cutoff date and time for entering your bids online.** After this time has passed, you will not be able to enter your bids from our online catalog.
- ◆ Remember that just because you are the high bidder in the online catalog, this does not mean you have won the item. Your bid will still need to beat the floor bidders and live phone bidders. This system will run our absentee bids just as we did before. You will still be able to buy the item lower than your online bid unless someone on the floor bids you higher.

**3) Live phone bidding is available on pieces with an estimated sale price of \$500 or more.** If you would like to participate in live phone bidding, contact us by **the Tuesday before the auction Tuesday, April 23.** We will need to know the lot# and the phone number that you can be reached at on the day of the auction. We will also need your home phone number if different than the above number. Please call with questions: 641-424-1116.

**There is a \$7 handling charge for each successful bid. Shipping and insurance charges are additional.**  
**Bidders will be notified by phone/email if their bid(s) are successful.**

**This will be done 1 - 3 days after the auction.**

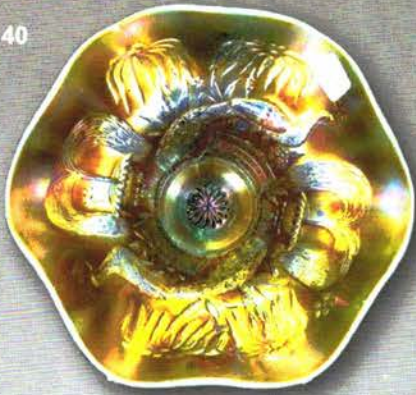
**BID INCREMENTS:** \$1 - \$100/\$5    \$100 - \$200/\$10    \$200 - \$700/\$25    \$700 - \$1,500/\$50  
\$1,500 - \$3,000/\$100    \$3,000+ Auctioneer's Discretion

- \_\_\_ 1. Parlor Panels 4" squatty vase - smoke - dark coloring & super pretty
- \_\_\_ 2. Parlor Panels 4" squatty vase - smoke - light smoke color, pretty, rare
- \_\_\_ 3. Parlor Panels 4" squatty vase - marigold - scarce, another nice one
- \_\_\_ 4. Imperial Grape deep ruffled sauce - purple - loaded with blue irid., super
- \_\_\_ 5. Flute breakfast set - purple - scarce, nice, minor nick on creamer handle
- \_\_\_ 6. Strawberry bonbon - red - rare & desirable, start of the best red collection we have sold in years
- \_\_\_ 7. Strawberry bonbon - lime green opal - scarce, very nice
- \_\_\_ 8. Double Loop chalice or open creamer- aqua opal- scarce, nice
- \_\_\_ 9. Stippled Rays 7" ruffled bowl - red - nice irid., scarce
- \_\_\_ 10. **STRETCH GLASS RUFFLED PUNCH BOWL & BASE - RED- ONLY ONE I KNOW OF RUFFLED, AN EXTREME RARITY, HIGHLY DESIRED**
- \_\_\_ 11. Luster Rose ftd fernery - purple - super pretty, chip on rose petal inside fernery
- \_\_\_ 12. Luster Rose ftd fernery - smoke - scarce color, pretty
- \_\_\_ 13. **NUART Homestead chop plate - amber - super pretty irid., scarce & very desirable**
- \_\_\_ 14. **NUART Homestead chop plate - white - super nice & scarce**
- \_\_\_ 15. Imperial Grape 7 pc. round berry set - purple - super pretty
- \_\_\_ 15A. **PEACOCKS RUFFLED BOWL W/RIBBED BACK - TRUE BLUE SLAG - ONE OF THREE PIECES KNOWN IN THIS COLOR, THE RARITY IS UNMATCHED, SUPER QUALITY, ONE OF THE TOP PIECES IN THE COUNTRY, A GREAT OPPORTUNITY TO BUY AN EXCITING PIECE OF GLASS!**
- \_\_\_ 16. **PEACOCKS RUFFLED BOWL W/RIBBED BACK - POWDER BLUE OPAL - EXTREMELY RARE BOWL IN THIS COLOR, CAN'T IMAGINE A PRETTIER ONE, WOW**
- \_\_\_ 17. **Peacocks ruffled bowl w/ribbed back - aqua opal - fantastic pastel, has no harm excess glass between a few points**
- \_\_\_ 18. Stippled Rays banana boat shaped sugar-red-very scarce, nice
- \_\_\_ 19. **GRAPE & CABLE PUNCH BOWL BASE - AQUA OPAL - ALL YOU GUYS OUT THERE HIDING YOUR TOPS, HERE IS YOUR CHANCE! A NEAT PIECE TO OWN!**
- \_\_\_ 20. **Grape & Cable punch cup - aqua opal - super nice example, RARE**
- \_\_\_ 20a. **Grape & Cable punch cup - aqua opal - another super nice one**
- \_\_\_ 21. Scroll Embossed ruffled compote - violet blue - beautiful irid., rare color
- \_\_\_ 22. **Field Flower water pitcher - purple - Imperial at its best, super!**
- \_\_\_ 23. Field Flower tumbler - purple - super
- \_\_\_ 24. **Field Flower water pitcher - smoke - very rare color, has fantastic irid.**
- \_\_\_ 25. Thin Rib & Drape 5 3/4" vase - green - scarce color for these
- \_\_\_ 26. **LITTLE FLOWERS 10" RUFFLED BOWL - RED - SUPER RARE & HAS FANTASTIC IRID., A GREAT PIECE**
- \_\_\_ 27. **Orange Tree powder jar- green- fantastic plus rare color**
- \_\_\_ 28. **Orange Tree powder jar - light lime green - can't remember selling one of these in this color, does glow in a dark room**
- \_\_\_ 29. **Peacock & Grape 9" plate - marigold - pastel w/fantastic yellow & pink irid.! a great plate!**
- \_\_\_ 30. **Peacock & Grape 9" plate - marigold - dark & fantastic, some would call this pumpkin**
- \_\_\_ 31. **Windmill milk pitcher - purple - super scarce, a beauty**
- \_\_\_ 32. **Windmill milk pitcher-smoke-very rare color for these, nice**
- \_\_\_ 33. **FASHION GIANT ROSE BOWL - PURPLE - HAS THAT ELECTRIC IMPERIAL IRID., FANTASTIC!**
- \_\_\_ 34. **Fashion giant rose bowl - green - may be rarer than the purple**
- \_\_\_ 35. **Hobstar & Waffle Block hdd basket - marigold - 13 1/2" tall, scarce, nice**
- \_\_\_ 36. **ORANGE TREE W/TRUNK IC SHAPED BOWL PEACH OPAL - ABSOLUTELY SUPER, CAN'T SAY I'VE SEEN MANY OF THESE, FABULOUS PIECE!**
- \_\_\_ 37. **Orange Tree IC shaped bowl - marigold on moonstone - very rare, large chip on edge**
- \_\_\_ 38. **Orange Tree IC shaped bowl - red - rare bowl & super beautiful**
- \_\_\_ 39. **Orange Tree w/Trunk IC shaped bowl - green -fantastic, unbelievable irid.**
- \_\_\_ 40. **Orange Tree IC shaped bowl- amethyst- very rare color & nice**
- \_\_\_ 41. **IMPERIAL GRAPE WATER PITCHER - EMERALD GREEN- EXTREMELY RARE & SUPER, A RARE OPPORTUNITY TO BUY A GREAT PITCHER**
- \_\_\_ 42. **Imperial Grape water pitcher - amber - fantastic! incredible! rare!**
- \_\_\_ 43. **Imperial Grape tumbler - amber - pretty**
- \_\_\_ 44. **Imperial Grape water pitcher - smoke - anothe beautiful pitcher, scarce color**
- \_\_\_ 45. **Imperial Grape tumbler - smoke - scarce, nice**
- \_\_\_ 46. **Imperial Grape water pitcher - purple - has fantastic blue irid., a WOW**
- \_\_\_ 47. **Imperial Grape tumbler - purple - nice**
- \_\_\_ 48. **IMPERIAL GRAPE WATER PITCHER - AQUA - EXTREMELY RARE & VERY PRETTY, GREAT PITCHER**
- \_\_\_ 49. **Imperial Grape tumbler - green - irid. matches the aqua pitcher**
- \_\_\_ 50. **Imperial Grape water pitcher - pastel marigold - fantastic irid., a beauty**
- \_\_\_ 51. **Imperial Grape water pitcher - marigold - dark, nice**
- \_\_\_ 52. **EMBROIDERED MUMS RUFFLED BOWL W/RIBBED BACK - AQUA OPAL - SUPER OPAL & NICE, RARE**
- \_\_\_ 53. **Florentine #349 candlesticks - red - 10 3/4" tall, extremely rare, nice set**
- \_\_\_ 54. **Tree Trunk mid-size 13" vase - marigold - fantastic pumpkin irid.**
- \_\_\_ 55. **Blackberry Spray square shaped hat - red - cherry, super**
- \_\_\_ 56. **ORANGE TREE ROUND SHAPED PUNCH BOWL & BASE- MARIGOLD ON MOONSTONE - UNBELIEVABLE, ONLY ONE I KNOW OF, BASE IS MARIGOLD, BUT WHO CARES, BOWL IS INCREDIBLE, A TOP RARITY**
- \_\_\_ 57. **ORANGE TREE ROUND SHAPED PUNCH BOWL & BASE - GREEN - ANOTHER EXTREME RARITY BEING SUPER PRETTY, A GREAT PUNCH BOWL & BASE!**
- \_\_\_ 58. **Fine Cut & Roses candy dish - aqua opal - pastel & super, typical minor pinpoint on one foot**
- \_\_\_ 59. **Vintage 10" ruffled bowl - red - cherry red color, very rare, highly desirable**
- \_\_\_ 60. **Vintage 9" ruffled bowl - red - rare bowl, has 2 spots on edge that have been polished**
- \_\_\_ 61. **Vintage 7" ruffled bowl - red - cherry red color, nice, rare size**
- \_\_\_ 62. **Holly ruffled hatshape - aqua opal - very scarce, nice**
- \_\_\_ 63. **Loganberry vase - smoke - very rare color, pretty**
- \_\_\_ 64. **Loganberry vase - purple - unbelievable, typical Imperial beauty**
- \_\_\_ 65. **Loganberry vase - amber - fantastic**
- \_\_\_ 66. **Loganberry vase - green - super example of a green one**
- \_\_\_ 67. **Loganberry vase - marigold - dark & fabulous**
- \_\_\_ 68. **Loganberry vase- clambroth- unusual color w/super irid.**
- \_\_\_ 69. **LEAF CHAIN IC SHAPED BOWL - YELLOW - YES, YELLOW! DOES NOT GLOW, VERY RARE COLOR, I'VE SOLD VERY FEW PIECES OF GLASS THAT WERE ACTUALLY YELLOW, HAS SUPER IRID., ONLY ONE I KNOW OF**
- \_\_\_ 70. **Leaf Chain IC shaped bowl - red - extremely rare red piece, not sure if I have sold another, nice!**

- \_\_\_ 71. Captive Rose 9" plate - marigold - dark, super
- \_\_\_ 72. Vintage CRE bowl - aqua opal - very, very rare bowl & super nice
- \_\_\_ 73. Cherry Circles round bonbon - red - fantastic irid., small spot of epoxy on one point
- \_\_\_ 74. Stippled Grape & Cable bonbon - aqua opal - light color but very, very rare
- \_\_\_ 75. Morning Glory 13" funeral vase - blue - an extremely unique vase, nothing like I have seen before, has the exact same characteristics as the old ones, but irid. is shiny, no matter what, it is pretty neat
- \_\_\_ 76. Morning Glory 13" funeral vase - purple - fantastic, has 9" mouth
- \_\_\_ 77. Morning Glory 12" funeral vase - green - nice example, 8" mouth
- \_\_\_ 78. Morning Glory 19" funeral vase - smoke - rare color, nice
- \_\_\_ 79. Morning Glory 18" funeral vase - marigold - very slight check in base
- \_\_\_ 80. **RIBBON TIE 3 IN 1 EDGE BOWL - RED - WOW, ABSOLUTELY INCREDIBLE PIECE OF RED THAT IS EXTREMELY RARE, AN OPPORTUNITY THAT IS HARD TO PASS UP**
- \_\_\_ 81. Leaf & Beads nut bowl - aqua opal - butterscotch & beautiful, scarce
- \_\_\_ 82. Acorn IC shaped bowl - red - super nice, scarce
- \_\_\_ 83. Vintage 9" ruffled bowl - aqua opal - very pretty example for these, rare
- \_\_\_ 84. Vintage 7" ruffled bowl- aqua opal- very nice & also rare
- \_\_\_ 85. Flute water pitcher - purple - fantastic Imperial!
- \_\_\_ 86. Flute #1 tumbler - purple - super
- \_\_\_ 87. Imperial Grape 9 pc. punch set - purple - beautiful & scarce set
- \_\_\_ 88. Corn bottle - smoke - scarce
- \_\_\_ 89. Columbia rose bowl - marigold - very, very rare, less than a handful known, another nice opportunity
- \_\_\_ 90. **PERSIAN MEDALLION 9" RUFFLED BOWL - RED - EXTREMELY RARE BOWL & SUPER, ANOTHER GREAT PIECE OF RED!**
- \_\_\_ 91. Stippled Three Fruits Medallion spt ftd ruffled bowl - aqua opal - scarce, nice
- \_\_\_ 92. Double Scroll console set- red- very rare set & nice, one scroll on the top of one candlestick did not completely fill out
- \_\_\_ 93. Double Scroll console set - teal - beautiful color, scarce, pretty
- \_\_\_ 94. Double Scroll console set - white - scarce, nice
- \_\_\_ 95. Double Scroll console set - smoke - scarce, nice
- \_\_\_ 96. Fashion water pitcher - purple - again, fantastic, but it is fantastic! rare
- \_\_\_ 97. Fashion water pitcher - smoke - rare color, nice!
- \_\_\_ 98. Fashion tumbler - smoke - nice
- \_\_\_ 99. Crucifix candlestick - marigold - scarce, nice
- \_\_\_ 100. Little Flowers 10" IC shaped bowl - red - very rare bowl & highly desirable
- \_\_\_ 101. Singing Birds mug - aqua opal - a beautiful one, as nice as they get
- \_\_\_ 102. Two Flowers lg size ftd ruffled bowl - red - another extreme rarity & great opportunity, nice
- \_\_\_ 103. Two Flowers lg size ftd ruffled bowl - white - extremely rare color, not many known, pretty too!
- \_\_\_ 104. **N'S THIN RIB 11" MID-SIZE SQUATTY VASE - AQUA OPAL- BUTTERSCOTCH & SUPER, HAS A REALLY UNIQUE SQUATTY LOOK**
- \_\_\_ 105. Windmill deep round bowl - emerald green - super rare color & pretty!
- \_\_\_ 106. Windmill deep round bowl - marigold on moonstone - another rare bowl, also very nice
- \_\_\_ 107. Windmill deep round bowl - smoke - super pretty irid.
- \_\_\_ 108. Stretch Glass 17" large charger/chop plate - red - don't ever recall seeing one this large, has got to be rare!
- \_\_\_ 109. Kulor 8" vase - blue - super pretty, scarce
- \_\_\_ 110. Cherry Chain 10" IC shaped bowl - red - very rare bowl, very few known, has a few spots of missing irid.
- \_\_\_ 111. Fruits & Flowers bonbon - aqua opal - pastel, super!
- \_\_\_ 112. Orange Tree hatpin holder - white - rare color, not many opportunities to buy a white one
- \_\_\_ 113. Orange Tree hatpin holder - green - super pretty, also very hard to find color
- \_\_\_ 114. Orange Tree hatpin holder - amethyst - bit silvery, but amethyst ones are almost impossible to find
- \_\_\_ 115. Imperial Glass Company paperweight- purple- fantastic
- \_\_\_ 116. Octagon lg size water pitcher - purple - rare pitcher, chip on collar base
- \_\_\_ 117. Octagon collar based tumbler - purple - nice
- \_\_\_ 118. Octagon small size water pitcher - purple - super pretty, very rare
- \_\_\_ 119. Kittens cup & saucer - marigold
- \_\_\_ 120. Coin Dot 8" ruffled bowl - red - cherry red color & super
- \_\_\_ 121. N's Wild Rose Variant open edge ftd bowl - blue - very rare & nice, the Stippled Rays inside bowl are flat where they normal are raised, have seen very few of these
- \_\_\_ 122. **LEAF CHAIN 9" PLATE - YELLOW - ANOTHER YELLOW! ONLY THE SECOND PLATE I'VE HEARD OF AND I THINK THE FIRST ONE MAY HAVE BEEN BROKEN, SUPER NICE, WOW!**
- \_\_\_ 123. Leaf Chain 9" plate - marigold - fantastic, dark & super, pumpkin orange!
- \_\_\_ 124. Floral & Optic ftd cake plate - red - extremely rare, super with heavy stretch
- \_\_\_ 125. Floral & Optic ftd cake plate - teal - very rare color, pretty, stretchy
- \_\_\_ 126. Floral & Optic ftd cake plate - white - super nice, scarce
- \_\_\_ 127. Floral & Optic ftd cake plate - marigold
- \_\_\_ 128. Wild Rose ftd nut bowl - emerald green - a killer piece of emerald!
- \_\_\_ 129. Wild Rose ftd bowl - blue - electric, pretty
- \_\_\_ 130. Chrysanthemum ruffled bowl - red - super red color, highly desirable, rare
- \_\_\_ 131. Fine Cut & Roses rose bowl - aqua opal - typical minor nick on foot, super example
- \_\_\_ 132. Poppy Show 9" plate - green - fantastic irid., beautiful plate, rare color
- \_\_\_ 133. Poppy Show 9" plate - blue - electric, nice, minor pinpoint on collar base
- \_\_\_ 134. Poppy Show 9" plate - marigold - super dark pumpkin irid., a dandy!
- \_\_\_ 135. Four Seventy Four 10" vase - marigold - very rare vase, hard to find, minor nick on top edge of base
- \_\_\_ 136. Smooth Panels 9" vase - red - has 3 1/2" base, super stretch irid.
- \_\_\_ 137. Smooth Panels 8 1/2" vase - wisteria - has 3 1/2" base, pretty
- \_\_\_ 138. Smooth Panels 8" vase - purple - has 3 1/2" base, not stretchy, 6 1/2" mouth
- \_\_\_ 139. Smooth Panels 5 1/2" vase - white - has 3 1/2" base & 7" mouth, stretchy
- \_\_\_ 140. **PEACOCK AT THE FOUNTAIN RUFFLED COMPOTE- AQUA OPAL-SUPER RARE COMPOTE, BUTTERSCOTCH & NICE**
- \_\_\_ 141. Orange Tree loving cup - white - rare color, chip on base
- \_\_\_ 142. Orange Tree loving cup-amethyst-super pretty example
- \_\_\_ 143. Orange Tree loving cup - green - pretty, scarce
- \_\_\_ 144. Orange Tree loving cup - blue - a beauty
- \_\_\_ 145. Tiger Lily water pitcher - purple - again, super pretty Imperial
- \_\_\_ 146. Tiger Lily tumbler - purple



140



395



373



102



120



122



130



183



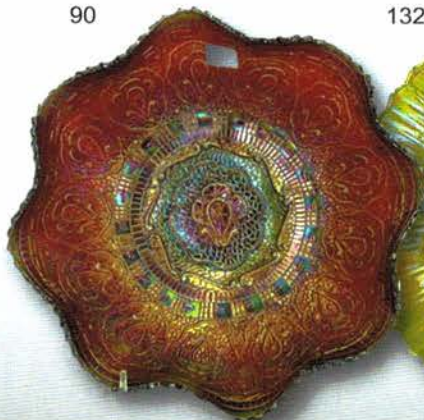
184



227



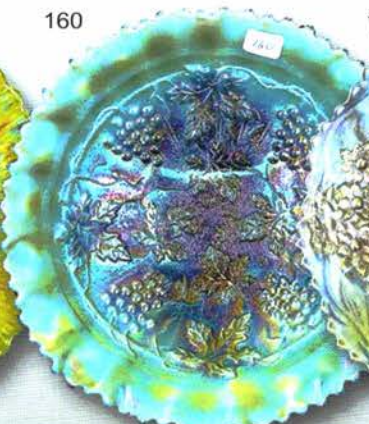
90



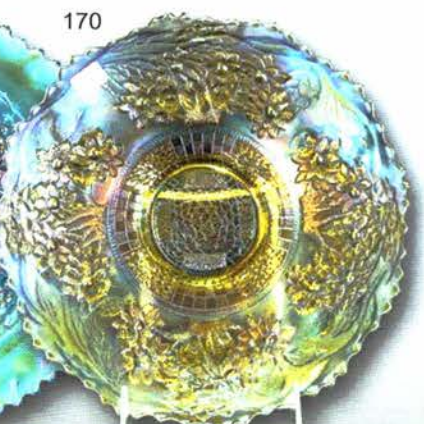
132



160



170



215



221



261



272



41



397



153



205



104



63



64



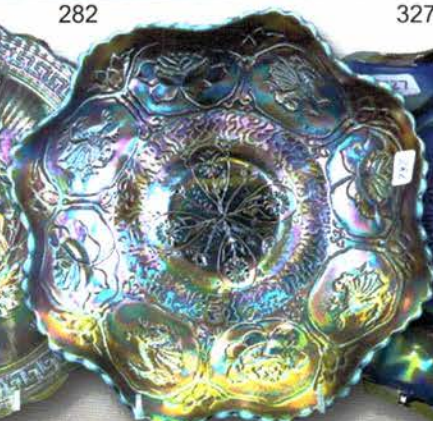
274



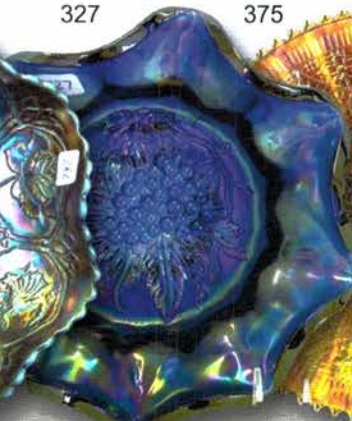
318



282



327



375



378



337



300



96

233



297



322



266



200



145





- \_\_\_ 147. Tiger Lily water pitcher - green - nice for these
- \_\_\_ 148. File 5 1/2" whimsey vase - marigold - scarce
- \_\_\_ 149. Pansy pickle dish - purple - pretty
- \_\_\_ **150. Hearts & Flowers ruffled bowl w/ribbed back - aqua opal - super opal & very, very rare, one point chipped**
- \_\_\_ 151. Fern ruffled hatshape - red - chip on base
- \_\_\_ **152. Queens lamp - green - very rare lamp & highly desirable, start of a nice run of lamps**
- \_\_\_ **153. CHESTERFIELD WATER PITCHER - RED - SUPER RED COLORING & STRETCHY IRID., WOW, RARE**
- \_\_\_ **154. Chesterfield tumbler - red - very rare tumbler**
- \_\_\_ 155. Chesterfield tumbler - teal - maybe rarer than the red, neat
- \_\_\_ 156. Chesterfield tumbler - white - scarce
- \_\_\_ 157. Heavy Grape lg size master berry bowl-smoke - super pretty
- \_\_\_ 158. Heavy Grape small size master berry bowl - smoke - this is a different size than the normal size master berry
- \_\_\_ 159. Heavy Grape small size ruffled master berry bowl - smoke-pretty
- \_\_\_ **160. Stippled Grape & Cable Variant PCE bowl w/ribbed back-aqua opal - super pretty example for this rare bowl**
- \_\_\_ **161. Waterlily ftd ruffled sauce - red - cherry & super**
- \_\_\_ **162. Fenton's Fine Rib 13" vase - aqua opal - very rare in this large size, minor pinpoint on back edge of ruffle**
- \_\_\_ **163. Fenton's Fine Rib 13" vase - red - hard to find in this large size**
- \_\_\_ 164. Basketweave Open Edge JIP hat - red - scarce
- \_\_\_ **165. Imperial Grape wine bottle w/out stopper - amber - I don't ever remember seeing another, pretty**
- \_\_\_ 166. Imperial Grape wine bottle w/stopper - smoke - scarce color, nice
- \_\_\_ 167. Imperial Grape wine bottle w/stopper - purple - fantastic blue irid.
- \_\_\_ **168. Royalty 11 pc. punch set - marigold - the base to this set is Fashion but is the correct base, rare**
- \_\_\_ 169. Scroll Embossed 9" plate - purple - super pretty
- \_\_\_ **170. ORANGE TREE W/TRUNK 9" PLATE - YELLOW - VERY RARE PLATE, NOT MANY KNOWN, ANOTHER YELLOW PIECE!**
- \_\_\_ 171. Orange Tree w/trunk 9" plate - green - very rare color
- \_\_\_ 172. Orange Tree 9" plate - amethyst - another rare color
- \_\_\_ 173. Orange Tree 9" plate - blue - super pretty example
- \_\_\_ 174. Orange Tree w/trunk 9" plate - marigold - fantastic, pumpkin type irid.
- \_\_\_ **175. Ripple 18" funeral vase - purple - 4 5/8" base, rare vase & nice**
- \_\_\_ **176. Ripple 20" funeral vase - green - 4 5/8" base, scarce**
- \_\_\_ 177. Pansy low ruffled bowl - lavender - pretty, many would call a plate
- \_\_\_ 178. Pansy low ruffled bowl - smoke - nice
- \_\_\_ 179. Pansy ruffled bowl - purple - super pretty
- \_\_\_ **180. Plaid ruffled bowl - red - very rare bowl & super nice for these**
- \_\_\_ **181. Fenton's Flowers rose bowl - red - rare rose bowl, minor pinpoint on top edge, feet look good, pretty**
- \_\_\_ **182. Fenton's Flowers rose bowl - white - very pretty example of this rare rose bowl**
- \_\_\_ **183. ORANGE TREE WHIMSEY FLATTENED OUT, RUFFLED PUNCH BOWL & BASE - BLUE - EXTREMELY RARE WHIMSEY, NOT MANY OPPORTUNITIES, NICE, MINOR PINPOINT ON COLLAR BASE OF BOWL**
- \_\_\_ **184. ORANGE TREE WHIMSEY FLATTENED OUT, RUFFLED 8 PC. PUNCH SET - MARIGOLD - ANOTHER WHIMSEY LIKE THE BLUE ONE! SUPER PRETTY, THESE ARE WONDERFUL!**
- \_\_\_ **185. Six Sided candlestick - purple - rare single, nice**
- \_\_\_ **186. Six Sided candlestick - green - has a swirl effect on irid. on base**
- \_\_\_ 187. Six Sides candlesticks - marigold - scarce
- \_\_\_ 188. Acanthus chop plate - smoke - super nice example, scarce
- \_\_\_ 189. Acanthus chop plate - marigold - nice
- \_\_\_ **190. Peacock at the Fountain fruit bowl - aqua opal - has crack across base & one point chipped off, great shelf piece! RARE!**
- \_\_\_ 191. Orange Tree shaving mug - red - spectacular irid., this is outstanding, is a very minor pinpoint on top edge, who cares
- \_\_\_ **192. Orange Tree shaving mug - red slag - slag completely throughout piece, rare**
- \_\_\_ **193. Orange Tree shaving mug - green - extremely rare color for the shaving size**
- \_\_\_ **194. Vintage 3 in 1 edge ruffled bowl - aqua opal - very rare in this shape, highly desirable**
- \_\_\_ **195. Soda Gold water pitcher - smoke - super pretty, scarce**
- \_\_\_ 196. Soda Gold tumbler - smoke
- \_\_\_ 197. Acanthus deep round bowl - purple - super pretty
- \_\_\_ 198. Acanthus deep round bowl-green-very pretty for a green one
- \_\_\_ 199. Kittens ruffled dish - blue - super pretty example
- \_\_\_ **200. Stretch Glass punch bowl & base - red - bowl is iridized inside & out, this is very unusual, most are only iridized on the inside, super nice**
- \_\_\_ **200a. Farmyard square ruffled bowl - purple - always desirable**
- \_\_\_ **201. Blackberry Spray JIP CRE hatshape - aqua opal - rare shape & super**
- \_\_\_ 202. Blackberry Spray JIP CRE hatshape - red - scarce, nice
- \_\_\_ 203. Blackberry Spray Variant JIP CRE hatshape - red - super pretty, has only 2 sets of berries
- \_\_\_ **204. Peacocks 9" plate w/ribbed back-marigold- dark & nice**
- \_\_\_ **205. Scroll & Flower Panels vase - smoke - fantastic irid. on this extremely rare vase**
- \_\_\_ 206. Open Rose ftd centerpiece bowl - amber - scarce, nice
- \_\_\_ 207. Twist #315 candlesticks - vaseline - scarce, nice
- \_\_\_ 208. Diamond Lace water pitcher - purple - super
- \_\_\_ 209. Diamond Lace tumbler - purple
- \_\_\_ **210. M'burg Wild Rose 9" lamp - green - has 6 3/8" base, pretty, neat squatty shape, couple of bursts in flat of base**
- \_\_\_ **211. M'burg Wild Rose 9" lamp - amethyst - has 5 1/2" base, fantastic example**
- \_\_\_ **212. M'burg Wild Rose 9 1/2" lamp - marigold - has 6" base, rare color, nice**
- \_\_\_ 213. Luster Rose ruffled ftd fruit bowl - red - extremely rare, highly desirable & nice
- \_\_\_ 214. Holly ruffled compote - red - scarce, nice
- \_\_\_ **215. Heavy Grape chop plate - white - very rare color, super stretchy irid., a dandy**
- \_\_\_ **216. Heavy Grape chop plate - purple - fantastic irid., scarce, minor pinpoint on one grape**
- \_\_\_ **217. Heavy Grape chop plate - marigold - has fantastic stretchy irid., wonderful plate**
- \_\_\_ 218. Heavy Grape chop plate - green - hard to find this pretty
- \_\_\_ 219. Heavy Grape chop plate - marigold - nice
- \_\_\_ 220. Scroll Embossed small sized ruffled compote - purple - nice
- \_\_\_ **221. Vintage 3 in 1 edge 9" bowl - red - very rare shape for these, seldom sold**
- \_\_\_ 222. Dandelion mug-aqua opal-nice opal, minor pinpoint on base
- \_\_\_ **223. Knotted Beads 11 1/2" vase - red - extremely rare vase in red, hardly ever up for auction**
- \_\_\_ **224. Fenton's Flowers whimsey 7" round ftd bowl-blue-this is the rose bowl flattened out into a bowl, rare whimsey, have not seen this before, neat!**
- \_\_\_ **225. Peacock lamp - red - very rare color w/ super irid., has cloth shade**
- \_\_\_ 226. Zippered Heart ruffled master berry bowl & 2 ruffled sauces purple - super irid.
- \_\_\_ **227. Beaded Bullseye 8" vase - emerald green - very rare vase, has 6 1/2" mouth, super irid.!**

- \_\_\_ 228. **Beaded Bullseye 7" squatty vase - purple - has 7" mouth, fantastic**
- \_\_\_ 229. Double Star pitcher - green - has super irid., may be the best one I've sold
- \_\_\_ 230. Double Star tumbler - green
- \_\_\_ 231. **Lotus & Grape card tray shaped bonbon - red - super pretty, a real beauty, scarce**
- \_\_\_ 232. Fenton's Grape & Cable 7" ruffled bowl - red - scarce
- \_\_\_ 233. **Zippered Loop med. size finger lamp - smoke - very rare lamp in this color, nice**
- \_\_\_ 234. **Zippered Loop med. size finger lamp - marigold - dark, nice, scarce**
- \_\_\_ 235. **Zippered Loop small size finger lamp - marigold - super cute & pretty, scarce**
- \_\_\_ 236. Whirling Star punch bowl and base - marigold - rare old set
- \_\_\_ 237. Smooth Panels 6 3/4" vase - smoke on milk glass has 2 1/2" base, rare and super cute
- \_\_\_ 238. Smooth Panels 4 1/2" vase - teal has 2 1/2" base - squatty cute shape, 4 3/4" mouth
- \_\_\_ 239. Windmill ruffled bowl - purple - super
- \_\_\_ 240. **Concave Diamonds guest set - vaseline-very scarce, nice**
- \_\_\_ 241. **Stag & Holly spt ftd ruffled bowl - red - very pretty example for this rare piece**
- \_\_\_ 242. **Orange Tree Scroll 5 pc. tankard water set - blue - pitcher is super, rare set**
- \_\_\_ 243. **Butterfly & Berry 8 3/4" vase - red slag - very rare vase, hard to find**
- \_\_\_ 244. **Rose Show 9" plate- marigold - dark, pretty w/pink irid.**
- \_\_\_ 245. **Stag & Holly lg size ftd ruffled bowl - amberina with red streaks - very unusual bowl, nice**
- \_\_\_ 246. **Chesterfield 9" candlesticks - red - one stick has minor pinpoint on bottom corner, scarce & nice**
- \_\_\_ 247. **Chesterfield 9" candlesticks - teal - one stick has large chip on side of base**
- \_\_\_ 248. Chesterfield candlesticks - white - couple of corners on base have minor nicks
- \_\_\_ 249. **Chatelaine water pitcher - purple - super iridescence, epoxy on base**
- \_\_\_ 250. Chatelaine tumbler - purple - minor pinpoint on base
- \_\_\_ 251. Stippled Rays 6" plate - red - very rare plate & highly desirable
- \_\_\_ 252. Drapery 8" vase - aqua opal - fantastic opal w/super butterscotch irid., typical chips on feet
- \_\_\_ 253. Fenton's Grape & Cable 8" ball ftd ruffled bowl - red - very rare bowl
- \_\_\_ 254. Caroline hdd basket - peach opal - scarce
- \_\_\_ 255. Stretch glass 8 1/2" lg ruffled vase - red - has super stretchy irid., 4" base
- \_\_\_ 256. Open Rose 9" plate-purple-super pretty, rough spots on roses
- \_\_\_ 257. Open Rose 9" plate - amber - super pretty
- \_\_\_ 258. Hobstar & Arches 9" ruffled bowl - purple - fantastic irid.
- \_\_\_ 259. Double Helix candlesticks - marigold - rare, nice
- \_\_\_ 260. Poinsettia milk pitcher - smoke - nice
- \_\_\_ 261. **Orange Tree ruffled bowl - red - super example, rare**
- \_\_\_ 262. **Fenton's Fine Rib 10" vase - aqua opal - super nice example, very rare**
- \_\_\_ 263. Fenton's Fine Rib 10" vase - red - has minor heat check on seam of base
- \_\_\_ 264. **Poppy pickle dish - aqua opal - very scarce, pretty**
- \_\_\_ 265. **Fenton's Peacock at Urn ruffled compote - red - bird is pretty on this extremely rare compote**
- \_\_\_ 266. **Luster Rose water pitcher - purple - nice, hard to find**
- \_\_\_ 267. Luster Rose tumbler - purple - super
- \_\_\_ 268. Luster Rose water pitcher - clambroth - very nice
- \_\_\_ 269. **Stretch glass Rib Optic cream & sugar - red - super pretty & scarce**
- \_\_\_ 270. Stretch glass Rib Optic cream & sugar-teal-another scarce set
- \_\_\_ 271. Two Flowers spt ftd ruffled bowl - red - rare, nice
- \_\_\_ 272. **Stippled Three Fruits 9" plate w/ribbed back - aqua opal - pastel & very beautiful**
- \_\_\_ 273. Stippled Three Fruits 9" plate w/ribbed back - marigold - dark, super nice
- \_\_\_ 274. **Peacock Tail 7" IC shaped bowl - red - another very rare red piece, nice!**
- \_\_\_ 275. N's Bushel Basket - aqua opal - great opal, pretty butterscotch
- \_\_\_ 276. **Imperial Grape 11" ruffled bowl - blue - very rare bowl in blue, has several nicks on edge of bowl**
- \_\_\_ 277. Poppy Show vase - marigold - dark, nice
- \_\_\_ 278. Hoffman House goblet - red - very rare red piece
- \_\_\_ 279. **Windmill dresser tray - purple - very scarce, very pretty**
- \_\_\_ 280. Double Dutch ftd ruffled bowl - purple - super Imperial
- \_\_\_ 281. Acorn ruffled bowl - red - scarce, pretty
- \_\_\_ 282. **Dragon & Lotus ruffled bowl - aqua opal - very rare color, a dandy example**
- \_\_\_ 283. Dragon & Lotus ruffled bowl - red - scarce
- \_\_\_ 284. **Peacock at Fountain punch bowl base - aqua opal- has large chip on top of base, anyone with an extra bowl?**
- \_\_\_ 285. Persian Medallion bonbon - red - scarce, nice
- \_\_\_ 286. Heavy Grape punch bowl & base - marigold - nice
- \_\_\_ 287. Octagon small compote - purple- super pretty, chips on base
- \_\_\_ 288. Barrel salt & pepper shakers - smoke - neat little pair
- \_\_\_ 289. **Scroll Embossed deep round bowl - emerald green - rare color & super**
- \_\_\_ 290. Star of David ruffled bowl - purple - super
- \_\_\_ 291. **Orange Tree ftd water pitcher w/o scale band on top - blue - only one I know of, only one I've seen, does have damage on feet**
- \_\_\_ 292. Orange Tree ftd tumbler w/o scale band - blue - rare
- \_\_\_ 293. Horse Medallion ftd nut bowl - red slag - scarce, nice
- \_\_\_ 294. **Stippled Three Fruits Medallion spt ftd ruffled bowl w/ smooth edge - aqua opal - pastel, super**
- \_\_\_ 295. **Portly candlesticks - red - extremely rare set, seldom seen, one stick has minor pinpoint on rib, who cares**
- \_\_\_ 296. **Cobblestone ruffled bowl - purple - super**
- \_\_\_ 297. **Thumbprint & Ovals vase - purple - super pretty**
- \_\_\_ 298. **Flute & Cane small size milk pitcher - smoke - extremely rare color, can't say I've sold one**
- \_\_\_ 299. Scroll Embossed ruffled bowl - purple - super
- \_\_\_ 300. **Stretch glass giant rose bowl - red - made from punch bowl top, sits on a black base, only one I have ever seen, RARE, RARE**
- \_\_\_ 301. **Zippered Loop 11 1/4" lamp - marigold - 6" base, dark, super**
- \_\_\_ 302. **Zippered Loop 10 1/4" lamp - smoke - 6" base, super pretty, rare, burst in bottom edge**
- \_\_\_ 303. **Zippered Loop 8 1/4" lamp-marigold-5" base, dark, nice**
- \_\_\_ 304. **Zippered Loop 9" lamp - smoke - 5" base, pretty, scarce**
- \_\_\_ 305. **Zippered Loop 8" lamp - marigold - 5 1/2" base, short & squatty, neat**
- \_\_\_ 306. **Zippered Loop 7" lamp - marigold - 4" base, small & cute, pretty**
- \_\_\_ 307. **Luster Rose 9" deep round bowl - purple - fantastic**
- \_\_\_ 308. Heavy Grape 8" plate - smoke - scarce color, pretty
- \_\_\_ 309. Heavy Grape 8" plate - amber - also scarce, pretty
- \_\_\_ 310. Heavy Grape 8" plate - purple - super
- \_\_\_ 311. Heavy Grape 8" plate w/smooth edge - marigold - rare variation
- \_\_\_ 312. **Plume Panels 10 1/2" vase - red - super pretty example, looks like red from a distance**
- \_\_\_ 313. **Vintage 7" round bowl - aqua opal - another tough Fenton aqua opal piece, neat**
- \_\_\_ 314. **Dragon & Lotus IC shaped bowl - red - scarce & desirable**
- \_\_\_ 315. Blackberry Spray ruffled hat - aqua opal - another Fenton aqua opal!
- \_\_\_ 316. **Vintage fernery- red - scarce item, minor pit at top edge**

- \_\_\_ 317. Vintage fernery - green - fabulous! beautiful irid!
- \_\_\_ **318. Chrysanthemum chop plate - light smoke or clambroth or maybe pastel marigold - you can decide, has super irid. beautiful in any color you call it!**
- \_\_\_ 319. Shell & Sand deep ruffled bowl - purple - fantastic blue irid.
- \_\_\_ 320. Ripple 12" vase - purple - 3 3/8" base, pretty
- \_\_\_ 321. Rococco vase - smoke - scarce, nice
- \_\_\_ **322. Orange Tree Orchard water pitcher w/straight top - blue - only one I've seen, beautiful, neat whimsy shape!**
- \_\_\_ **323. Orange Tree Orchard 5 pc. water set - blue - scarce set**
- \_\_\_ **324. Coin Dot deep round bowl-red- super red irid., a beauty**
- \_\_\_ **325. Tree Trunk 11" vase - aqua opal - super opal, a dandy**
- \_\_\_ 326. Holly JIP CRE hatshape - red - scarce shape
- \_\_\_ **327. Heavy Grape 7" ruffled bowl - blue - super pretty & extremely rare color**
- \_\_\_ 328. Little Barrel - smoke - nice
- \_\_\_ 329. Little Barrel - green - minor pinpoint on top edge
- \_\_\_ 330. Little Barrel - marigold - pretty
- \_\_\_ 331. Fenton's Grape & Cable fruit bowl - green - has Persian Medallion interior, scarce
- \_\_\_ **332. Lotus & Grape bonbon - red - rare bonbon, nice**
- \_\_\_ **333. Stippled Strawberry 9" plate w/ribbed back - marigold-scarce, pretty**
- \_\_\_ **334. Stretch glass 8 1/4" flared out vase - red - on black base, scarce**
- \_\_\_ **335. Orange Tree ruffled ftd ruffled fruit bowl - green - extremely rare color, not many around, a dandy**
- \_\_\_ **336. Panther ftd ruffled sauce - red - rare, always in demand**
- \_\_\_ **337. Colonial Lady vase - purple - super pretty, a beauty**
- \_\_\_ 338. Star Medallion milk pitcher - smoke - pretty, scarce
- \_\_\_ **339. Floral & Optic ftd round bowl - red - scarce, pretty**
- \_\_\_ 340. Floral & Optic ftd round bowl - teal - scarce color, pretty
- \_\_\_ 341. Floral & Optic ftd round bowl - purple - extremely rare color, not many of these around
- \_\_\_ **342. Holly ruffled bowl - red - very pretty example, scarce**
- \_\_\_ 343. Stippled Three Fruits ruffled bowl w/ribbed back - aqua opal - super opal & scarce, chip on edge
- \_\_\_ **344. Florentine #449 candlesticks-red-very rare pair, nice, 8 1/2"**
- \_\_\_ 345. Daisy Drape flared out vase - aqua opal - super pretty
- \_\_\_ 346. Stippled Rays sugar bowl - red - nice
- \_\_\_ **347. Shell 9" plate - smoke - has pretty marigold irid., super**
- \_\_\_ 348. Luster Rose butter dish & creamer - purple - super pretty, nick on finial of butter
- \_\_\_ **349. Gothic Arches 11" vase - smoke - has 8" mouth, very scarce vase & nice**
- \_\_\_ 350. Hobstar Flower ruffled compote - lavender - odd color, pretty
- \_\_\_ **351. Imperial Grape water carafe - purple - fantastic**
- \_\_\_ **352. Horse Medallion 7" ruffled bowl - red - pretty, scarce**
- \_\_\_ **353. Orange Tree ruffled 6 pc. punch set - white - very rare set, super pretty**
- \_\_\_ 354. Orange Tree ruffled punch bowl & base - blue -chip on back edge of ruffle, pretty
- \_\_\_ **355. Vintage 9" IC shaped bowl - red - very rare piece of red, nice**
- \_\_\_ 356. Blackberry Open Edge ruffled hat - red - pretty example
- \_\_\_ **357. Blaze 4 1/4" round bowl - blue - fantastic little bowl, extremely rare**
- \_\_\_ 358. Scroll Embossed lg size ruffled compote - purple - super
- \_\_\_ **359. Imperial Grape deep round bowl - green - some may call this emerald, it has fantastic irid.**
- \_\_\_ 360. Miniature Morning Glory 5" vase - purple - fantastic, minor pit on one tip
- \_\_\_ 361. Miniature Morning Glory 4 1/2" vase - green - scarce
- \_\_\_ **362. Peacock & Grape ruffled bowl - red - scarce, nice**
- \_\_\_ **363. Rose Show ruffled bowl - aqua opal - a beautiful pastel one!**
- \_\_\_ 364. Holly ruffled hatshape - red - nice
- \_\_\_ **365. Rustic 19 1/2" funeral vase - blue - always desired**
- \_\_\_ 366. Butterfly & Berry small ftd berry bowl - red - these are very red, who has the big one?
- \_\_\_ **367. Fashion round compote-smoke-very rare compote & nice**
- \_\_\_ **368. Parlor Panels 10 1/2" vase - purple - super pretty, minor peeling effect on top edge**
- \_\_\_ 369. Parlor Panels 11" vase - green - rare color
- \_\_\_ 370. Parlor Panels 11" vase - lavender - super
- \_\_\_ 371. Parlor Panels 8 1/2" vase - smoke - scarce color
- \_\_\_ **372. Leaf Chain 7" ruffled bowl - red - scarce, nice**
- \_\_\_ **373. N's Peacock at Urn IC sauce - aqua opal - highly desirable, scarce!**
- \_\_\_ 374. Fenton's Flute 9 1/2" vase - red - another rare red vase!
- \_\_\_ **375. Hearts & Flowers 9" plate w/ribbed back - marigold - dark & pretty, a super nice example**
- \_\_\_ **376. Stretch glass large ftd ruffled fruit bowl - red - very rare, highly desirable**
- \_\_\_ 377. Four Seventy Four milk pitcher - green - nice
- \_\_\_ **378. Diamond Lace tumbler - marigold - extremely rare tumbler in marigold, this one is perfect! most of these are not**
- \_\_\_ 379. Imperial Flute 11" vase - purple - super pretty
- \_\_\_ 380. Fostoria #079 candlesticks - light marigold
- \_\_\_ 381. Hattie ruffled bowl - purple
- \_\_\_ **382. Peacock & Grape spt ftd ruffled bowl - red - super pretty, scarce**
- \_\_\_ **383. Stretch glass spittoon - celeste blue - have not seen one of these before, this is a really cool piece!**
- \_\_\_ **384. Stretch glass 12" chop plate - red - super stretch irid.**
- \_\_\_ **385. Orange Tree standard size mug - aqua opal - extremely rare, one of just a few known, I had 60 different Orange Tree mugs at one time & could never get this one!**
- \_\_\_ 386. Orange Tree standard size mug - red - this is a fabulous one
- \_\_\_ 387. Kittens cereal bowl - aqua - rare color
- \_\_\_ **388. Imperial Grape 9" plate - amber - super pretty, a very rare Imperial plate**
- \_\_\_ 389. Wide Panel 9" bowl - purple - extremely rare color, pretty
- \_\_\_ 390. Optic & Buttons water pitcher - marigold - rare pitcher
- \_\_\_ **391. Chesterfield salt dip - purple - does not have the Imperial Cross Mark but is exactly like the marigold one, fantastic miniature**
- \_\_\_ 392. Good Luck ruffled bowl w/ribbed back - aqua opal - super opal on a super bowl, flat of bottom has been polished
- \_\_\_ 393. Holly goblet shaped compote - red - nice
- \_\_\_ 394. Orange Tree deep round bowl - marigold - spectacular
- \_\_\_ **395. Cherry Circles bonbon - red - extremely rare bonbon in red, another great red piece!**
- \_\_\_ 396. Sailboats ruffled sauce - red - scarce
- \_\_\_ **397. Broken Arches 5 pc. punch set - purple - super pretty & super scarce, has lots of blues**
- \_\_\_ 398. Scroll Embossed miniature ruffled compote - purple - pretty, scarce
- \_\_\_ 399. Drapery rose bowl - aqua opal - nice, small nick on top edge
- \_\_\_ 400. Stretch glass 6" ruffled vase - red - has 7 1/2" mouth

Seeck Auctions  
PO Box 377  
Mason City, Iowa  
50402

85



2013 Auction  
Carnival Glass  
Sat., April 27, 9:30 a.m.  
Kansas City, Mo.

Open  
to the public

Presorted  
First Class Mail  
U.S. Postage  
Paid  
Mail Expeditors

T5 P1 17  
LEE MARKLEY  
BOX 306  
MENTONE IN 46539-0306



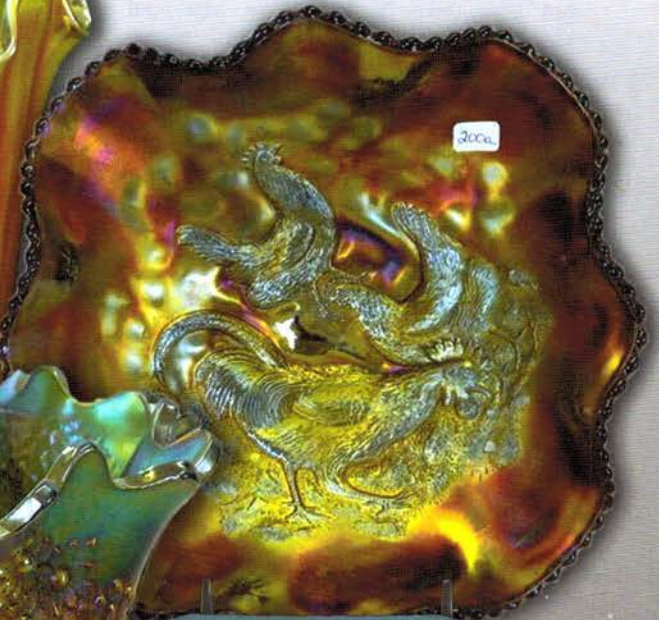
180



104



200a



383



335



115