

Southern California
Carnival Glass Club Convention

CARNIVAL GLASS 2013 AUCTION

Saturday, March 16, 9:30 a.m.

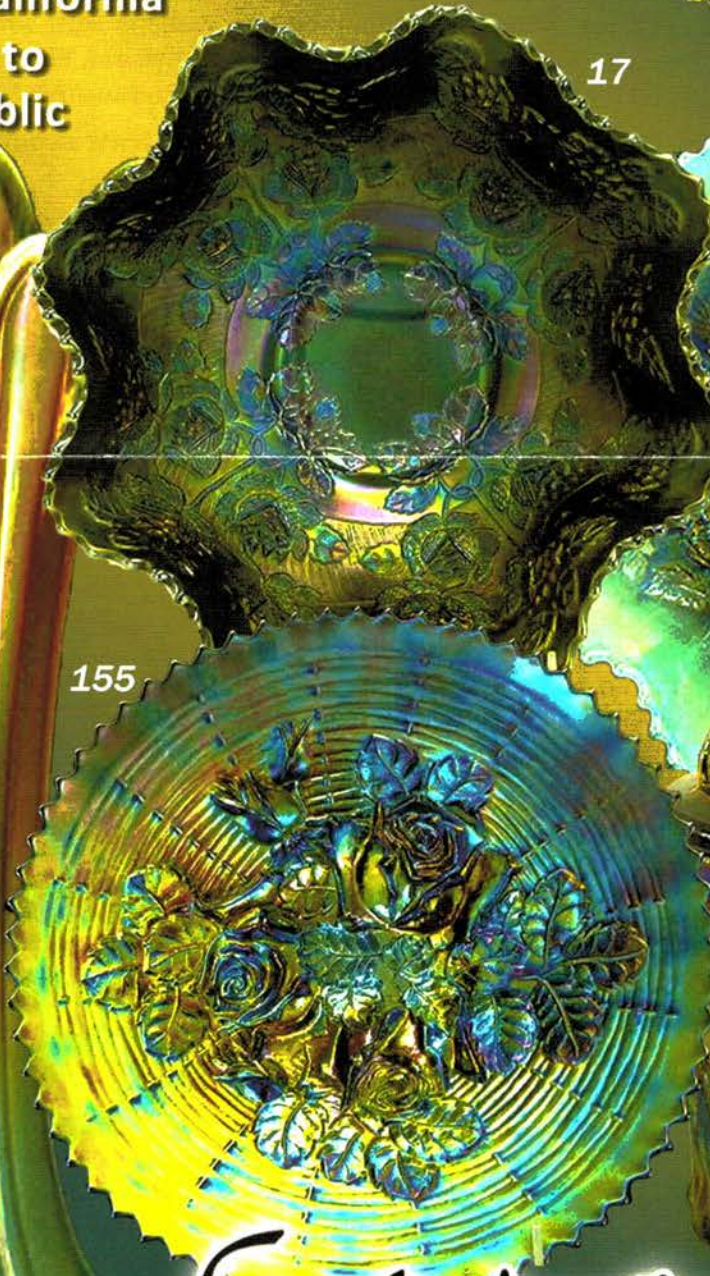
Ayres Country Suites Hotel
Ontario, California

Open to
the Public

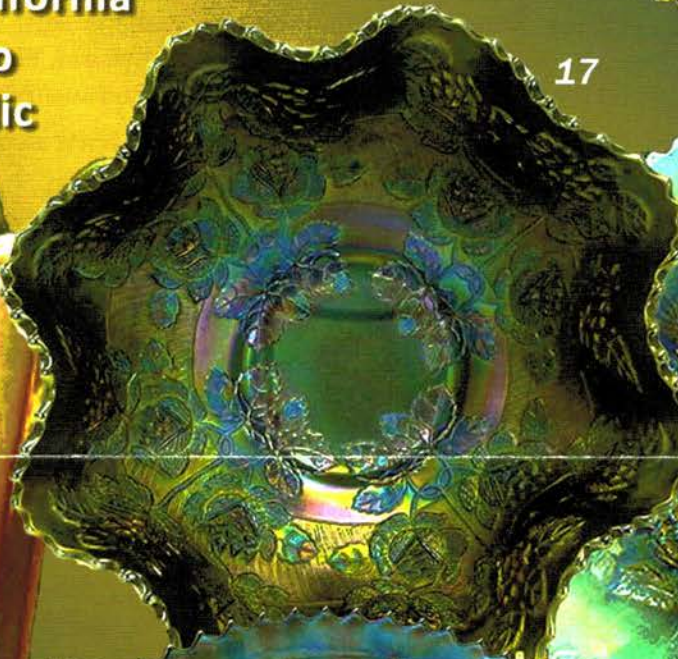
65



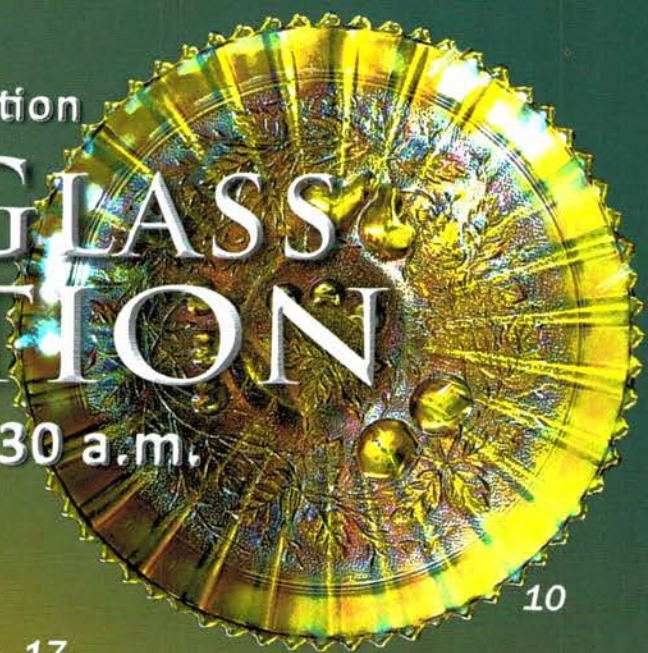
155



17



10



30



25



Jim & Jan Seeck

Seeck Auctions

641-424-1116

SATURDAY, MARCH 16, 2013 — 9:30 A.M.

JIM & JAN SEECK

Ayres Country Suites Hotel

641-424-1116

1945 E. Holt Blvd., Ontario, California 91764

NO BUYER'S PREMIUM

OPEN TO THE PUBLIC

For Online Auction Catalog, Check our Website: www.seeckauction.com

email: jimjan@seeckauction.com

Online absentee bidding closes, Friday, March 15, at 6 p.m. CST

This year's auction for the Southern California Carnival Glass Club showcases quality glass offered up by several collectors. Auction-goers will enjoy a variety of outstanding pieces and pattern sets that you don't often see together. The room will be a rainbow of rare and scarce colors such as Reninger blue, sapphire and marigold on milk glass. Whether you love vases or just have to capture another "Peacocks" plate, make sure you come to the convention auction or view and bid on pieces on our on line auction site.

HOTEL INFORMATION: If staying at the hotel, call direct for room reservations: 909-390-7778. Let them know you are with the Southern California Carnival Glass Club. Group rate ends Wednesday, Feb. 20, 2013.

CONVENTION INFORMATION: Contact Heidi Ritterbush at 805-492-3903 or hritterbush55@hotmail.com

Visit the Southern California Carnival Glass Club website at: www.sccgc.webs.com

Terms: Cash or Check, VISA, MasterCard & Discover accepted w/proper ID. **4% Clerking Fee** on all purchases except for payment of cash or check. Announcements made day of sale take precedence over any printed information.

**** Sales Tax will be charged, please bring your tax-exempt numbers.**

Also, please email us and we will put you on our email mailing list for auction notices.

We have 3 options for absentee bidding:

1) If you DO NOT have internet access or access to our website, you can:

Call us by phone to enter your bids at (641)424-1116 **OR** By sending the numbers of the item(s) desired and the amount bid on each to: Seeck Auctions, PO Box 377, Mason City, Iowa 50402. (The mail has not been very dependable. We would prefer you call us with your bids rather than send them in a letter.)

- All written and called in bids will be entered into the online catalog by us.
- Have all bids in by **Wed., March 13.**

2) Enter your bids from our website into our online catalog through the Auction Flex system.

- ◆ When you get to the online catalog, you will need to login as a bidder. For the first time you will need to **set up your account** by creating a username and password. This will include filling out a form with your name, address, etc. You will also need to **register for the auction** which will ask you to enter a valid credit card number. This card will be validated by a \$1 charge to your card. This will only happen once and you will now be able to enter bids through our online catalog by just logging in with your user name and password.
- ◆ You will use this user name and password for all our auctions. You are not required to pay by credit card if you are successful. This is just a safeguard for us if someone does not pay. We will let you know what you owe us through an email and you can decide how you would like to pay us.
- ◆ An exciting advantage of entering your bids online yourself, is the option to be notified by email if you are outbid on an item. You will know when you are outbid on an item and you can increase your bid on that item or bid on something else. **There will be a cutoff date and time for entering your bids online.** After this time has passed, you will not be able to enter your bids from our online catalog.
- ◆ Remember that just because you are the high bidder in the online catalog, this does not mean you have won the item. Your bid will still need to beat the floor bidders and live phone bidders. This system will run our absentee bids just as we did before. You will still be able to buy the item lower than your online bid unless someone on the floor bids you higher.

3) Live phone bidding is available on pieces with an estimated sale price of \$500 or more. If you would

like to participate in live phone bidding, contact us by **the Tuesday before the auction Tuesday, March 12.** We will need to know the lot# and the phone number that you can be reached at on the day of the auction. We will also need your home phone number if different than the above number. Please call with questions: 641-424-1116.

There is a \$7 handling charge for each successful bid. Shipping and insurance charges are additional.

Bidders will be notified by phone/email if their bid(s) are successful.

This will be done 1 - 3 days after the auction.

BID INCREMENTS: \$1 - \$100/\$5 \$100 - \$200/\$10 \$200 - \$700/\$25 \$700 - \$1,500/\$50
 \$1,500 - \$3,000/\$100 \$3,000+ Auctioneer's Discretion

- ___ 1. **Orange Tree wine goblet - green - rare color, nice**
- ___ 2. Orange Tree wine goblet - aqua - scarce color
- ___ 3. Orange Tree wine goblet - blue - pretty
- ___ 4. Orange Tree wine goblet - vaseline - scarce color
- ___ 5. Orange Tree wine goblet - marigold
- ___ 6. Honeycomb & Beads crimped edge 7" plate - peach opal - nice
- ___ 7. Cosmos & Cane tumbler - marigold - pretty
- ___ 8. Cosmos & Cane tumbler - honey amber - nice
- ___ 9. Miniature Intaglio compote - marigold - cute mini
- ___ 10. **Stippled Three Fruits 9" plate w/ribbed back - apple or lime green - only the second piece of this color I have seen in Northwood Glass, super rare, fantastic irid. a great find**
- ___ 11. **Fenton Stretch Glass perfume w/flower stopper - ice green - very rare perfume, extremely hard to find**
- ___ 12. **Stippled Three Fruits 9" plate w/ribbed back - aqua opal - very pretty butterscotch irid., opal tips, a pretty plate**
- ___ 13. **Stippled Three Fruits 9" plate w/ribbed back - blue - electric and fantastic, as nice as I have ever sold**
- ___ 14. **Stippled three Fruits 9" plate w/ribbed back - sapphire - very pretty plate, rare**
- ___ 15. **Stippled Three Fruits 9" plate - marigold - dark with super pumpkin type irid.**
- ___ 16. Imperial Basketweave hdd basket - marigold
- ___ 17. **Rose Tree ruffled bowl - blue - fantastic, a beautiful example of a rare bowl**
- ___ 18. Concave Diamonds 6" ruffled vase - celeste blue - rare
- ___ 19. **Poppy Show 9" plate - green - super pretty plate, rare**
- ___ 20. **Poppy Show 9" plate - blue - very pretty, scarce**
- ___ 21. **Poppy Show 9" plate - ice blue - scarce and nice**
- ___ 22. **Poppy Show 9" plate - marigold - covered with pink and yellow irid., fantastic**
- ___ 23. **Poppy Show 9" plate - marigold - super dark and pretty, a real beauty**
- ___ 24. Kittens two sides up dish - blue - pretty
- ___ 25. **M'burg Pipe Humidor - amethyst - absolutely fantastic radium irid. on this top piece in our hobby, a rare opportunity to buy one of the best! as pretty as I've seen**
- ___ 26. Scroll Embossed ruffled bowl w/File back - smoke - very pretty
- ___ 27. **Wishbone & Spades large ruffled bowl - purple - fantastic irid. on this scarce bowl**
- ___ 28. **Strawberry Scroll 7 pc water set - blue - super rare set, very pretty & highly desirable, one tumbler cracked**
- ___ 29. Pinched Swirl 6 1/2" vase - peach opal
- ___ 30. **Good Luck ruffled bowl w/ribbed back - aqua opal - fantastic pastel example with lots of opal and irid., WOW!**
- ___ 31. **Good Luck ruffled bowl w/ribbed back - sapphire - outstanding, very rare & desirable**
- ___ 32. Good Luck ruffled bowl w/ribbed back - blue - electric, super
- ___ 33. Good Luck ruffled bowl w/ribbed back - marigold - very pretty
- ___ 34. **Imperial Grape wine bottle - emerald green - very rare in this color, super**
- ___ 35. **Butterfly & Berry 8 1/2" vase - red - very rare vase, nice**
- ___ 36. Nautilus whimsey sugar bowl - peach opal
- ___ 37. **Fashion ruffled compote - smoke - very rare compote, nice**
- ___ 38. **Double Scroll console bowl - red - scarce and nice**
- ___ 39. **Double Scroll candlestick - red - scarce, minor nick on inside rim of base**
- ___ 40. **Rose Show 9" plate - emerald green - extremely rare plate and nice, minor nick on rose**
- ___ 41. **Rose Show 9" plate - lime green - super pretty and very rare**
- ___ 42. **Rose Show 9" plate - purple - great irid. for a purple example, super, minor nick on back edge**
- ___ 43. **Rose Show 9" plate - marigold - this is a screamer, covered in pink and yellow**
- ___ 44. Round up 3 in 1 edge bowl - peach opal - nice
- ___ 45. **Grape & Cable master IC bowl - blue - very rare bowl, pretty with lots of blue irid.**
- ___ 46. **Grape & Cable master IC bowl - amethyst - also a rare and pretty bowl**
- ___ 47. **Captive Rose 3 in 1 edge bowl - blue - got to be one of the best examples**
- ___ 48. Golden Pineapple and Blackberries 9" IC shaped bowl - marigold - hardly ever get to sell these
- ___ 49. Wide Panel 7 1/2" round bowl - red - nice, heat check in base
- ___ 50. **Stippled Peacocks PCE bowl w/ribbed back - marigold - fantastic pink irid., WOW!**
- ___ 51. Miniature Morning Glory 5" vase - purple - super, has streaks of irid., neat
- ___ 52. Morning Glory 5 3/4" vase - smoke
- ___ 53. Scroll Embossed 9" plate - purple - super
- ___ 54. Stippled Good Luck ruffled bowl w/ribbed back - blue - electric, nice

- ___ 55. Stippled Good Luck ruffled bowl w/ribbed back - marigold - covered in pink irid., super
- ___ 56. Scales banana boat shaped dish - peach opal - scarce shape, nice
- ___ 57. Dragon's Tongue lamp shades (2) - marigold on moonstone - nice
- ___ **58. Blueberry water pitcher – marigold - pretty from top to bottom**
- ___ 59. Blueberry tumbler – marigold
- ___ **60. Hearts & Flowers 9” plate w/ribbed back - ice blue - very pretty, very rare**
- ___ **61. Hearts & Flowers 9” plate w/ribbed back - purple - a great plate, haven't seen many of these better than this one**
- ___ **62. Hearts & Flowers 9” plate w/ribbed back - marigold - also super nice**
- ___ 63. Kittens toothpick - blue - very nice example
- ___ 64. Kittens toothpick - marigold - whimsy shaped
- ___ **65. N's Thin Rib 13” vase - aqua opal - super rare and super pretty, butterscotch irid.**
- ___ 66. Tiger Lily water pitcher - blue - Riihimaki, scarce, nice
- ___ 67. Tiger Lily tumbler - blue - Riihimaki
- ___ 68. Daisy & Drape flared out vase - aqua opal - scarce, nice
- ___ **69. Rib Optic creamer and sugar - red - rare set**
- ___ 70. Ranger tumbler - marigold
- ___ 71. Finecut & Roses rose bowl - green - super
- ___ 72. Finecut & Roses rose bowl - amethyst - polish on feet
- ___ 73. Finecut & Roses rose bowl – marigold - pretty pastel coloring
- ___ 74. Enameled Single Flower 3 in 1 edge bowl - peach opal
- ___ **75. Broken Arches 8 pc punch set - purple - super pretty, very scarce set**
- ___ 76. Luster Rose tumbler - purple
- ___ 77. M'burg Rosalind large size IC shaped bowl - amethyst - satin and super, a rare bowl
- ___ 78. M'burg Hanging Cherries 7” ruffled bowl – amethyst - super radium irid.
- ___ **79. Fluffy Peacock 7 pc water set - blue - rare color, nice**
- ___ 80. Pansy ruffled bowl - purple - electric
- ___ 81. Ribbon Tie IC shaped bowl - blue - very scarce in this shape in any color
- ___ 82. Ribbon Tie IC shaped bowl - green
- ___ 83. Ribbon Tie IC shaped bowl - amethyst
- ___ 84. Ribbon Tie IC shaped bowl – marigold - nice
- ___ **85. Peacocks ruffled bowl w/ribbed back - aqua opal - very nice, scarce**
- ___ **86. Peacocks ruffled bowl w/ribbed back - green scarce color, nice**
- ___ **87. Peacocks ruffled bowl w/ribbed back - horehound/lavender - very nice bowl, pretty irid.**
- ___ **88. Singing Birds mug - aqua opal - pretty, rare color**
- ___ 89. Caroline handled basket - peach opal - scarce
- ___ **90. Peacocks 9” plate w/ribbed back - ice blue - very scarce plate, highly desirable**
- ___ **91. Peacocks 9” plate w/ribbed back - lime green-rare color, nice**
- ___ 92. Peacocks 9” plate w/ribbed back - ice green - nice
- ___ **93. Peacocks 9” plate w/ribbed back - blue - electric, scarce**
- ___ **94. Peacocks 9” plate w/ribbed back - green -rare color, nice**
- ___ **95. Peacocks 9” plate w/ribbed back - purple - very pretty, scarce**
- ___ 96. Peacocks 9” plate w/ribbed back - marigold - nice
- ___ 97. Scroll Embossed ruffled sauce - purple - super
- ___ 98. Smooth Panels 8 1/4” vase - red - has 3 1/2” base, 5 1/4” mouth
- ___ 99. Smooth Panels 8” vase - red - has 2 1/2” base
- ___ 100. Rose Show ruffled bowl – marigold - minor nick on rose, pretty
- ___ **101. Grape & Cable hatpin holder – green - super, a beauty,**
- ___ 102. Grape & Cable hatpin holder - purple - nice
- ___ 103. Imperial Grape low ruffled bowl - smoke -pretty
- ___ 104. Imperial Grape ruffled bowl - marigold - nice
- ___ **105. Vintage CRE bowl - aqua opal - very rare, has chip on base**
- ___ 106. Fanciful 3 in 1 edge bowl - peach opal - nice
- ___ 107. Heavy Iris tankard water pitcher - marigold-nice
- ___ **108. Fine Rib 14” vase - red - rare in this size, minor pinpoint on rib 2” up from bottom**
- ___ 109. Fine Rib 9 1/2” vase - red - nice
- ___ **110. M'burg Many Stars IC shaped bowl - green - radium, rare and nice**
- ___ 111. Brides Bowl - peach opal - scarce, contemporary frame
- ___ 112. Heavy Grape 7” round bowl – purple
- ___ 113. Heavy Grape 7” round bowl - marigold - does not have the diamond pattern on outside edge of bowl, rare
- ___ 114. Three Fruits ruffled bowl w/plain back - purple - pretty, minor pinpoint on base
- ___ 115. Three Fruits ruffled bowl w/plain back-green-nice

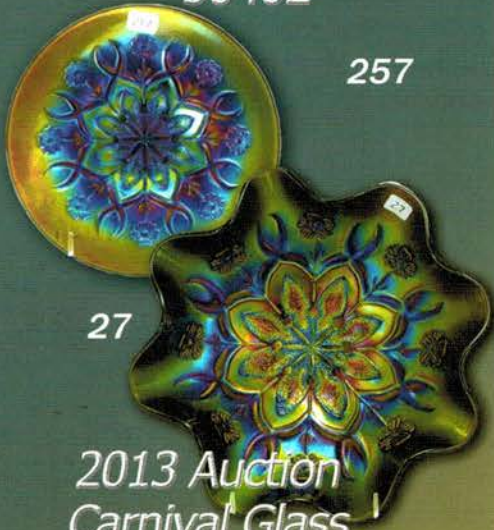
- ___ 116. N's Peacock at Urn master IC bowl- ice green-
very pretty, highly desirable
- ___ 117. N's Peacock at Urn master IC bowl - blue -
super pretty, electric and nice
- ___ 118. N's Peacock at Urn master IC bowl-amethyst-
as pretty as these get, super
- ___ 119. N's Peacock at Urn master IC bowl - marigold -
dark, nice
- ___ 120. N's Peacock at Urn master IC bowl-white- very nice
- ___ 121. M'burg Little Stars 7" ruffled bowl - green -
scarce, satin
- ___ 122. Feathers 7" squatty vase - white - extremely
rare vase, nice
- ___ 123. Leaf Rays spade shaped nappy - purple - nice
- ___ 124. Double Scroll console set - smoke - nice
- ___ 125. Grape & Cable mid size 6 pc punch set -
purple - very pretty set, rare and nice
- ___ 126. Flowers & Frames tri-cornered crimped edge
dome ftd bowl - peach opal - nice
- ___ 127. Horse Medallion ftd nut bowl - red slag - rare
bowl, nice
- ___ 128. Intaglio Flower ruffled basket - marigold on
moonstone - has wire handle, rare color
- ___ 129. Chrysanthemum ruffled bowl - marigold - chip
on edge
- ___ 130. Singing Birds 7 pc water set - green - pretty
set, rare
- ___ 131. Dahlia tumbler - white
- ___ 132. Dahlia tumbler - purple
- ___ 133. Nippon PCE bowl w/ribbed back-lime green-
super pretty, rare
- ___ 134. Nippon PCE bowl w/BW back - ice blue - dark
and pretty
- ___ 135. Nippon PCE bowl w/ribbed back - purple -
minor nick on point, pretty
- ___ 136. Thin Rib 11 1/2" vase - sapphire - pastel and
pretty, scarce
- ___ 137. Basketweave Open Edge large size ruffled dish -
ice green - nice
- ___ 138. Enameled Stippled Petal dome ftd 9" plate -
peach opal - minor nick on dome foot
- ___ 139. Basketweave Open Edge JIP basket - aqua - nice
- ___ 140. M'burg Trout & Fly square shaped bowl -
marigold - satin and super, rare shape
- ___ 141. Luster Rose fernery - clambroth - super pink and
yellow irid.
- ___ 142. Dragon & Strawberry ftd ruffled bowl -
marigold - super nice and scarce,
highly desirable
- ___ 143. Strawberry ruffled bowl w/plain back - green -
super pretty
- ___ 144. Leaf & Beads rose bowl - aqua opal - pretty
- ___ 145. Leaf & Beads rose bowl - blue - nice
- ___ 146. Heavy Grape chop plate - amber - pretty, scarce
- ___ 147. Good Luck PCE bowl w/ribbed back-
marigold - nice
- ___ 148. Beaded Basket - lavender - rare color
- ___ 149. Fenton's Flute 10" vase - red - rare vase
- ___ 150. Lotus & Grape 9" plate - green - as pretty as
they come, rare and desirable, WOW
- ___ 151. Pansy round pickle dish - clambroth - pretty
- ___ 152. N's Bushel basket - lavender - very pretty
- ___ 153. N's Bushel basket - purple - super, almost black
amethyst
- ___ 154. Bells & Beads crimped edge 7" bowl-peach opal
- ___ 155. Rose Show Variant 9" plate - renninger blue -
very rare plate, super!
- ___ 156. Pansy breakfast set - purple - pretty
- ___ 157. Pansy breakfast set - lavender -
very rare set, pretty
- ___ 158. Grape & Cable punch cup - aqua opal - very
rare and desirable, nice
- ___ 159. Basketweave Open Edge two sides up basket -
red - scarce
- ___ 160. Grape & Cable Variant 9" plate w/BW back -
marigold - fantastic, lots of yellow irid.
- ___ 161. Grape & Cable Variant 9" plate w/plain back -
purple - mold roughness on base
- ___ 162. Vineyard water pitcher - peach opal - rare
- ___ 163. Holly & Berry 7" ruffled bowl - purple - nice
- ___ 164. Fenton's Peacock at Urn 9" plate-marigold- nice
- ___ 165. Tree Trunk 10" vase - aqua opal - super
example, minor nick on base
- ___ 166. Orange Tree standard size mug- green-rare color
- ___ 167. Shell & Sand 9" plate - purple - super
pretty, rare
- ___ 168. Holly crimped edge JIP hat - blue
- ___ 169. Border Plant dome ftd handgrip plate - peach
opal - rare shape, nice
- ___ 170. Pulled Loop 6" squatty vase - purple - pretty
and scarce
- ___ 171. Wishbone tri-cornered ftd bowl - marigold -
rare shape, super
- ___ 172. Blackberry Spray two sides up hat-amethyst-nice
- ___ 173. Nippon 9" plate w/BW back - green - very
rare plate, pretty
- ___ 174. Imperial Grape 6" plate - purple - nice
- ___ 175. Chesterfield candlesticks - red - rare set, chip
on inside base rim
- ___ 176. M'burg Courthouse IC shaped bowl-amethyst
as pretty as they get, scarce in this shape
- ___ 177. Heavy Grape 5" round sauce - purple - pretty

- ___ 178. **Peacocks PCE bowl w/ribbed back-marigold - pastel and pretty**
- ___ 179. **Lions 7" plate - marigold - rare plate, nice**
- ___ 180. Ski Star tri-cornered crimped edge dome ftd bowl - peach opal - scarce shape
- ___ 181. Leaf Columns 10 1/2" vase - blue - scarce color
- ___ 182. **Stippled Strawberry ruffled bowl w/ribbed back - lime green- rare color and nice**
- ___ 183. Blackberry Block tumbler - green
- ___ 184. Blackberry Block tumbler - blue
- ___ 185. **Stippled Strawberry PCE bowl w/ribbed back purple - super example, scarce**
- ___ 186. Fishscale & Beads 7" plate - marigold - pretty
- ___ 187. **M'burg Peacock 6" plate-lavender - rare color**
- ___ 188. **Strawberry 9" plate w/plain back- marigold - fantastic**
- ___ 189. Dandelion mug - aqua opal - butterscotch, nice
- ___ 190. Star of David ruffled bowl - purple - super
- ___ 191. **Stippled Three Fruits Medallion spatula ftd ruffled bowl - aqua opal - pastel and nice**
- ___ 192. Orange tree ruffled compote - aqua - scarce
- ___ 193. Diamond Point 10" vase - aqua opal - scarce and nice, nick on base
- ___ 194. Wild Rose Open Edge nut bowl - purple - nice
- ___ 195. **M'burg Grape Leaves 3 in 1 edge bowl - amethyst - radium and rare**
- ___ 196. **M'burg Grape Leaves 3 in 1 edge bowl - marigold - radium and nice, rare**
- ___ 197. Octagon 7 pc wine set - marigold - nice
- ___ 198. **Tree Trunk 10" vase - sapphire - very rare and highly desirable**
- ___ 199. Pastel Swan salt - peach opal - super opal, scarce
- ___ 200. **Stippled Grape & Cable PCE bowl w/ribbed back - ice blue - super, very scarce**
- ___ 201. Fenton's Three Fruits 12 sided plate - marigold
- ___ 202. Grape & Cable 7 pc. water set - purple - chip on one tumbler, nice
- ___ 203. **Six Sided candlestick - marigold - has a smokey look**
- ___ 204. **Shell 9" plate - smoke - scarce plate, nice**
- ___ 205. Strawberry Scroll tumbler - blue - fantastic
- ___ 206. **Persian Medallion 10" 3 in 1 edge bowl - green - super pretty, rare shape in this size**
- ___ 207. Nippon ruffled bowl w/BW back - marigold - dark and super
- ___ 208. Enameled Stippled Flower ruffled bowl- peach opal
- ___ 209. **Floral & Optic ftd round bowl-red-scarce & nice**
- ___ 210. **Stippled Peacocks 9" plate w/ribbed back - renninger blue-super example for this rare piece**
- ___ 211. Stippled Rays deep round sauce - red - scarce
- ___ 212. Coin Dot ruffled bowl - peach opal - extremely rare color
- ___ 213. Stippled Three Fruits ruffled bowl w/ribbed back marigold - super dark and pretty
- ___ 214. Shell & Sand deep round bowl - purple - nice
- ___ 215. **Persian Medallion bonbon - celeste blue - rare color and nice, a beauty**
- ___ 216. Windflower ruffled bowl - marigold
- ___ 217. **Vintage 7" ruffled bowl - aqua opal - very rare bowl and nice, fairly flat**
- ___ 218. Estate sugar bowl - peach opal
- ___ 219. **Stippled Grape & Cable Variant 9" plate w/ribbed back-sapphire- very rare plate and nice**
- ___ 220. **Stippled Grape & Cable Variant/Old Rose Distilling 9" plate w/ribbed back - green - great example, pretty**
- ___ 221. US glass #310 candlesticks - celeste blue - scarce
- ___ 222. Grape & Cable 7 pc berry set - purple
- ___ 223. Beaded Cable rose bowl - aqua opal - nice
- ___ 224. **Drapery Variant 9 1/2" vase - sapphire - very rare, super vase**
- ___ 225. Basketweave Open Edge square shaped basket - red - nice
- ___ 226. Hearts & Flowers ruffled bowl w/ribbed back - marigold - dark and super
- ___ 227. Hearts & Flowers ruffled bowl w/ribbed back - ice blue - nice
- ___ 228. Rambler Rose tumbler - blue
- ___ 229. Rambler Rose tumbler - marigold
- ___ 230. **Poppy Show ruffled bowl - ice green - very rare bowl, super**
- ___ 231. **Poppy Show ruffled bowl - ice blue - very rare and pretty, minor nick on base**
- ___ 232. **M'burg Country Kitchen deep round bowl - marigold - rare, rare bowl**
- ___ 233. Pansy ruffled pickle dish - clambroth - pretty
- ___ 234. **Owl hatpin - green - extremely rare and desirable hatpin, pretty, we'll give you a metal owl hatpin as a bonus**
- ___ 235. Four Flowers 6" plate - peach opal
- ___ 236. **Colonial #696 candlestick - red - very nice, rare if you need it**
- ___ 237. **M'burg Seaweed 9" IC shaped bowl - green - satin and super, rare size**
- ___ 238. Nautilus whimsey creamer - peach opal - nice
- ___ 239. **Concord ruffled bowl - green - super, minor nick on base**
- ___ 240. Holly 9" plate - marigold - nice
- ___ 241. Four Pillars 11" vase - aqua opal - typical minor nick on toe

- ___ 242. Acorn Burrs creamer and butter lid – purple
 ___ 243. Stippled Good Luck ruffled bowl w/ribbed back-
 blue - very nice
 ___ 244. Stippled Good Luck ruffled bowl w/ribbed back-
 marigold - lots of pink irid.
 ___ 245. Orange Tree Loving cup-blue- always in demand
 ___ 246. Miniature Blackberry compote - white - rare
 color, chip on base
 ___ 247. M'burg Blackberry Wreath 3 in 1 edge sauce -
 green - radium and nice
 ___ **248. Paneled Dandelion 6 pc water set - amethyst -**
rare set, rare version that has flat area where
handle is applied
 ___ 249. Paneled Dandelion tumbler - green
 ___ **250. Captive Rose 9" plate - green - super pretty,**
scarce
 ___ 251. Scroll Embossed deep round bowl - purple -
 super
 ___ 252. Stretch glass ruffled bowl - red - pretty
 ___ 253. Vintage 7" plate- amethyst - very pretty for these
 ___ **254. Grape & Cable 9" plate w/plain back -**
marigold - super pretty plate
 ___ **255. Good Luck 9" plate w/ribbed back - green -**
super pretty, rare
 ___ 256. Leaf Tiers lamp shades (2) - marigold on
 moonstone - scarce
 ___ **257. Wishbone & Spades 6" plate - WOW, this**
plate is fantastic
 ___ 258. Pansy ruffled bowl - purple - nice
 ___ 259. M'burg Peacock IC shaped sauce - amethyst -
 satin and nice
 ___ 260. Scroll Embossed 9" plate - purple - covered in
 green irid. nice
 ___ 261. Primrose lamp shades (3) – clambroth
 ___ 262. Orange Tree IC shaped bowl - blue - nice
 ___ **263. Stippled Good Luck 9" plate w/ribbed back -**
purple - super pretty and very rare in
this color
 ___ **264. Stippled Good Luck 9" plate - marigold -**
pretty pastel example
 ___ 265. Cherry Chain IC shaped sauce - green - super,
 rare color
 ___ 266. Estate creamer - blue opal - nice
 ___ 267. Hearts & Flowers ruffled compote - aqua opal -
 nice
 ___ 268. Apple Blossom Twigs 3 in 1 edge bowl - peach
 opal - very nice
 ___ 269. Smooth Panels lampshades (3) – marigold
 ___ 270. Heavy Iris tumbler - marigold
 ___ 271. Pair of Lamp shades – irid. milk glass, and
 clambroth
 ___ 272. Drapery 7 1/2" vase - marigold
 ___ **273. Rose Show ruffled bowl - ice green - super**
pretty and rare
 ___ **274. Rose Show ruffled bowl - aqua opal - pretty**
example, highly desirable
 ___ **275. Rose Show ruffled bowl - aqua opal -**
completely different look then lot 274
 ___ **276. Rose Show ruffled bowl - green - super, super,**
super, rare
 ___ **277. Rose Show ruffled bowl - marigold - fantastic,**
as nice as they get
 ___ 278. Lattice & Grape and Lattice & Daisy tumblers -
 marigold
 ___ 279. Poppy Show vase - white - contemporary
 ___ 280. Daisy & Button wine - blue - contemporary
 ___ 281. Fenton Persian Medallion fairy lamp - white -
 contemporary
 ___ 282. Pair of Votive lights - plum opal - contemporary
 ___ 283. Fenton Peacock Garden vase - ice green opal -
 decorated by R. Baunam, contemporary
 ___ 284. Covered Pie Wagon - purple - contemporary
 ___ 285. Atlantis vase - peach opal - contemporary
 ___ 286. Swan vase - gold azure - 1984 Connoisseur
 Collection
 ___ 287. Hobnail Fairy Lamp - lilac and sea foam green -
 signed by Shelley Fenton
 ___ 288. Seacoast Spittoon - ice green opal - ACGA 2002
 ___ 289. Empress Vase - sea green - 1998 Historic
 Collection
 ___ 290. Milady tankard pitcher - teal - signed by
 Bill Fenton
 ___ 291. Heavy Grape decorated plate - pink - signed by
 Frances Burton, SOCAL 1996
 ___ 292. Woodlands ruffled bowl - smoke - 2002

Seeck Auctions
 PO Box 377
 Mason City, Iowa
 50402

Presorted
 First Class Mail
 U.S. Postage
 Paid
 Mail Expeditors

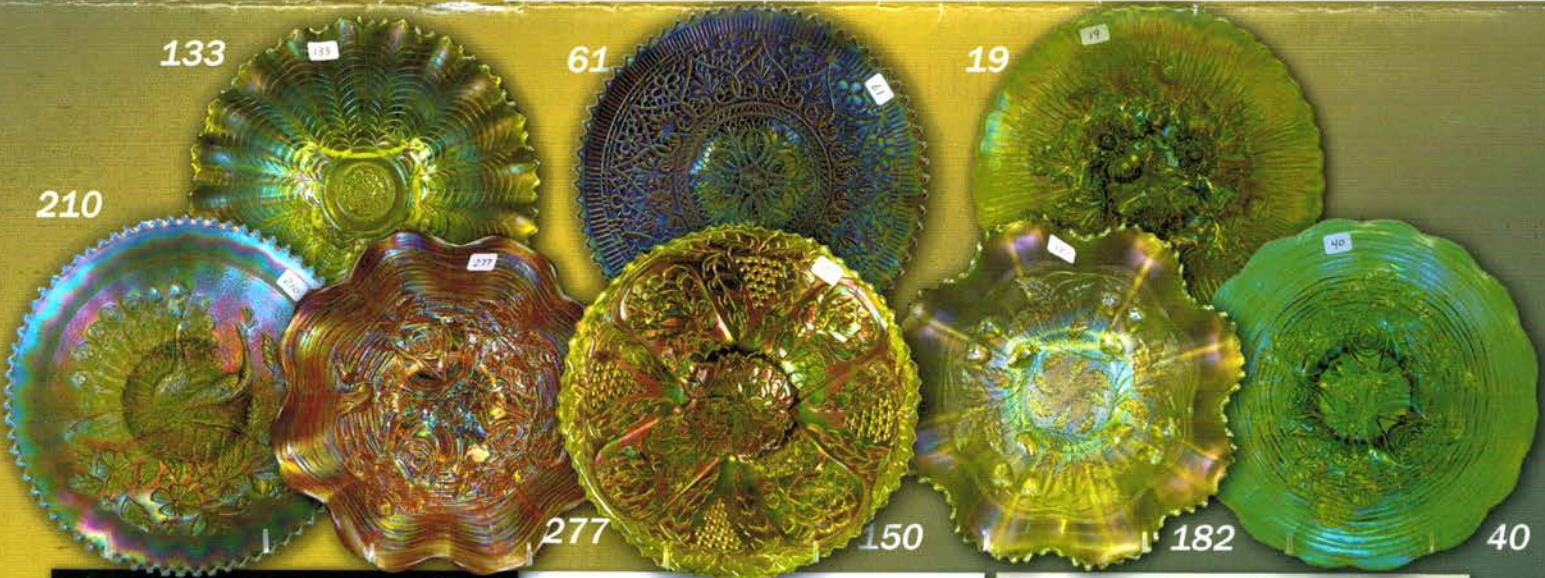


257

27

2013 Auction
 Carnival Glass
 Sat., March 16,
 9:30 a.m.
 Ontario, California

T4 P1 203
 LEE MARKLEY
 BOX 306
 MENTONE IN 46539-0306



133

61

19

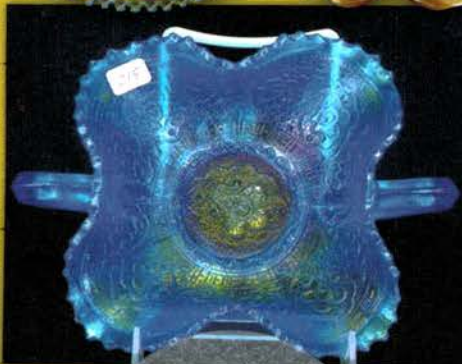
210

277

150

182

40



215



75



28