



LOT # 255

BURNS

AUCTION SERVICE

2013 TAMPA BAY
CARNIVAL GLASS
CONVENTION AUCTION
SATURDAY, FEBRUARY 2nd
9:30 A.M.

Preview:

Friday evening after banquet
and Saturday at 8:00 a.m.



LOT # 25

DOLPHIN BEACH RESORT
4900 Gulf Blvd, St. Pete Beach, FL 33706

800-237-8916 OR 727-360-7011

www.dolphinbeach.com

Tom Burns, Auctioneer Florida License #AU3768
Debra Remmen, Auctioneer Florida License #AU2640



LOT # 350



LOT # 315



LOT # 140

Hello to everyone... everyone who survived the Holidays, the weather, the Mayan Calendar, and so on... We are starting the 2013 Season with an Auction for the Tampa Bay Carnival Glass Club Convention. There is a great selection of a little bit of everything with the major share of the glass from a Collection in Canada.

The Dolphin Beach Resort of St. Pete Beach will host the event once again. Stay on I-275 through St. Petersburg to Exit 17 / The Bayway; continue West thru the Toll Booth and at the end; turn right (North) on Gulf Blvd. For motel information call them directly at 1-(800) 237-8916 or 1-(727) 360-7011.

The Convention will run from Wednesday, January 30th thru Saturday, February 2nd. For further Convention information call Carl Chapman at 1-(813) 899-1993 or cell: 1-(813) 625-0927 or you may contact Janet Knechtel at 1-(863) 993-2387.

This auction will also be on the **Auction Flex Absentee Bidding System** as we continue to feel our way into the 21st Century.

Special note to all dealers... All Florida Dealers must have a copy of their Florida Tax Certificate – and all other dealers must have a VALID Tax License from their respective State. Thanks!!!

For any other information, or if I can be of any assistance, call or write: Burns Auction Service Thomas Burns 183 Sunnyside Drive, Clermont, FL 34711

- | | | | |
|--------|--|---------|--|
| ___1. | 11 3/8" Fenton for Singleton Bailey Farmyard Flat Crimped Edge Plate – Dk. Purp. (super irid.) | ___22. | 9" N Rose Show 8 Ruffled Bowl – Purp. (scarce; has a satiny finish) |
| ___2. | 11" Fenton for Singleton Bailey Farmyard Flat Crimped Edge Plate – Green (super irid.) | ___23. | 8 3/4" N Good Luck 8 Ruffled Bowl with Basketweave Ext. – Green (very scarce and very desirable – nice satiny finish) |
| ___3. | Fenton for Singleton Bailey Farmyard Rose Bowl – Green (scarce; super irid.) | ___24. | 8 5/8" N Good Luck 8 Ruffled Bowl with Basketweave Ext. – Amyth. (satiny; very scarce) |
| ___4. | Fenton For Singleton Bailey Farmyard Rose Bowl – Elec. Blue (scarce; really super irid.) | ___25. | 10" N PEACOCK AT THE URN LG. ICE CREAM BOWL – SAPPHIRE (VERY RARE AND DESIRABLE; GREAT BASE COLOR WITH GOLD HIGHLIGHTS) |
| ___5. | Fenton for Singleton Bailey Farmyard Spittoon – Dk. Purp. (mold detail sorta weak; super irid.) | ___26. | 10" N Peacock at the Urn Lg. Ice Cream Bowl – White (probably as nice as they get) |
| ___6. | Fenton for Singleton Bailey Farmyard Spittoon – Green (scarce; super irid.) | ___27. | 9 1/2" N Peacock at the Urn Lg. Ice Cream Bowl – Pastel Mari. (another really nice example) |
| ___7. | 9" 1992 ICGA Lions domed Flat Plate Souvenir – Green (scarce; super irid.) | ___27A. | N PEACOCK AT THE FOUNTAIN 3 FTD. RUFFLED FRUIT BOWL – RENNINGER BLUE (VERY RARE AND DESIRABLE BASE COLOR; NICE MULTI-COLORED SATINY FINISH) |
| ___8. | (2) 1985, (2) 1986, (2) 1987, (1) 1988, (1) 1989 HOACGA Souvenir Bells Portraying Glass Company Founders – Various Colors (selling by set; so much each) | ___28. | N Peacock at the Fountain 3 ftd. Ruffled Fruit Bowl – Dk. Mari. (super dark example – nice) |
| ___9. | 1976 HOACGA 8 pc. Whiskey Decanter Set – Red (great color) | ___29. | N Peacock at the Fountain Ruffled Punch Top only – Dk. Mari. (another super example; nice) |
| ___10. | 12 7/8" TALL N THIN RIB MID-SIZE SWUNG VASE – LIME ICE GREEN (RARE AND VERY DESIRABLE; SUPER BASE COLOR) | ___30. | 9" N PEACOCKS PLATE WITH PLAIN EXT. – ICE BLUE (RARE AND DESIRABLE; GREAT BASE COLOR AND GREAT IRID.) |
| ___11. | 12 1/2" TALL N THIN RIB MID-SIZE SWUNG VASE – WHITE (VERY SCARCE; SUPER IRID.) | ___31. | 9" N Peacocks Plate with Ribbed Ext. – Lime Ice Green (scarce base color; nice irid.) |
| ___12. | 14" Tall N Thin Rib Mid-size Swung Vase – Green (scarce with really nice irid.) | ___32. | 9" N Peacocks Plate with Ribbed Ext. – White (super example with great irid.) |
| ___13. | 13 1/4" Tall N Thin Rib Mid-size Swung Vase – Dk. Mari. (scarce with super color and irid.) | ___33. | 9" N Peacocks Plate with Ribbed Ext. – Amyth. (really flashy example; nice) |
| ___14. | 12 1/2" Tall N Thin Rib Mid-size Swung Vase – Purp. (nice satiny finish) | ___34. | N Poppy Oblong Ruffled Relish Tray with Ribbed Ext. – Blue (nice dark multi-colored irid.) |
| ___15. | 12 7/8" TALL N THIN RIB MID-SIZE SWUNG VASE – BLUE (VERY RARE AND UNDERPRICED ITEM) | ___35. | N POPPY OBLONG RUFFLED RELISH TRAY WITH RIBBED EXT. – MARI. / CUSTARD (EXTREMELY RARE ITEM; VERY DIFFICULT TO FIND) |
| ___16. | 9 1/4" Tall N Thin Rib J.I.P. Vase – Amyth. (very scarce shape; satiny finish) | ___36. | N DAISY AND DRAPE FTD. FLARED VASE – AQUA OPAL. (RARE; NICE PASTEL TOUCH) |
| ___17. | 10 3/4" Tall N Thin Rib Standard Swung Vase – Purp. (really nice irid.) | ___37. | N Daisy and Drape ftd. Turned in Vase – Amyth. (very scarce base color; average irid.) |
| ___18. | 7 5/16" Tall N Thin Rib Standard Squatty Swung Vase – Green / Mari. (has that "Alaska" finish) | ___38. | N Daisy and Drape ftd. Turned in Vase – Mari. (very scarce base color; average irid.) |
| ___19. | 10 1/2" Tall N 4 Pillar Swung Vase – Aqua Opal. (very desirable; nice opal. and irid.) | ___39. | N Daisy and Drape ftd. Turned in Vase – White (scarce; nice and frosty) |
| ___20. | 9 1/4" N POPPY SHOW FLARED PLATE – DK. MARI. (DESIRABLE; EXCELLENT ITEM) | ___40. | N DRAPERY ROSE BOWL – ICE BLUE (VERY RARE AND DESIRABLE; TOUGH TO FIND) |
| ___21. | 9 5/8" N ROSE SHOW FLARED PLATE – PURP. (RARE AND DESIRABLE; BRIGHT IRID.) | | |

41. N Drapery Rose Bowl with Plain Edge – White (rare variation; frosty and fine)
42. N Drapery Rose Bowl – Aqua Opal. (very scarce; really nice example)
43. N Drapery Tri-Cornered Candy Dish – Ice Blue (scarce; nice irid.)
44. N Drapery Swung Vase – Purp. (scarce item but (1) foot chipped)
45. **N BEADED CABLE FTD. RUFFLED ROSE BOWL – ICE BLUE (RARE AND DESIRABLE; GREAT COLOR AND IRID.)**
46. N Beaded Cable ftd. Ruffled Rose Bowl – White (very scarce and very frosty; nice)
47. N Beaded Cable ftd. Ruffled Rose Bowl – Aqua Opal. (very scarce; nice example)
48. N Beaded Cable ftd. Ruffled Rose Bowl – Mari.
49. N Raspberry 4 ftd. Handled Gravy Boat – Purp. (scarce; pretty good feet)
50. **N FINE CUT AND ROSES FTD. RUFFLED ROSE BOWL WITH FANCY INT. – WHITE (VERY SCARCE; NICE AND FROSTY)**
51. N Fine Cut and Roses ftd. Ruffled Rose Bowl – Amyth. (sorta odd tint)
52. N Fine Cut and Roses ftd. 6 Ruffled Candy Dish with Fancy Int. – Aqua Opal. (pastel finish that's super!... Damage to feet...)
53. N Fine Cut and Roses ftd. 6 Ruffled Candy Dish with Fancy Int. – Aqua Opal. (butterscotch example with the tiniest nick on one foot)
54. 9" N Three Fruits Flared Plate with Plain Ext. – Amyth. (almost wants to be lavender; satiny)
55. 9" N Three Fruits Medallion ftd. 8 Ruffled Bowl with Meander Ext. – Purp. (super example)
56. **N FRUITS AND FLOWERS FTD. HANDLED BON BON WITH BASKETWEAVE EXT. – ELEC. BLUE (ABSOLUTELY SUPER EXAMPLE)**
57. 7 ¾" N Fruits and Flowers 2 sided Banana Dish with Basketweave Ext. – Green (very scarce with great irid. having reddish highlights)
58. 7 ½" N Fruits and Flowers Handgrip Plate with Basketweave Ext. – Amyth. (very scarce item; satiny finish)
59. N Singing Birds Handled Mug – Blue (nice irid.)
60. **11" TALL N TREE TRUNK STANDARD SWUNG VASE – AQUA OPAL. (RARE AND VERY DESIRABLE; HAS A NICE BUTTERSCOTCH FINISH)**
61. 11" Tall N Tree Trunk Standard Swung Vase – Ice Blue (very scarce and desirable pastel)
62. 6 ¼" Tall x 5 ½" Flare N Tree Trunk Standard Squatty Swung Vase – Amyth. (nice satiny finish)
63. 13 ½" Tall N Tree Trunk Mid-size Swung Vase – Amyth. (very scarce; has a satiny finish)
64. 12 ¾" Tall N Tree Trunk Mid-size Swung Vase – Amyth. (very scarce; has a satiny finish)
65. **12 7/8" TALL N TREE TRUNK MID-SIZE SWUNG VASE – GREEN (RARE; VERY DESIRABLE; MARI./ BUTTERSCOTCH OVERLAY)**
66. **9 ¾" TALL N TREE TRUNK STANDARD SWUNG VASE – AQUA OPAL. (DIFFERENT THAN THE OTHER; SORTA PASTEL)**
67. **8 ½" N NIPPON BOWL WITH P.C.E. AND BASKETWEAVE EXT. – DK. ICE BLUE (RARE; VERY DESIRABLE; VERY ATTRACTIVE ITEM)**
68. N Leaf and Beads ftd. Rose Bowl with Flower Int. – Purp. (has a satiny finish)
69. N Leaf and Beads ftd. Rose Bowl with Stippled Rays Int. – Green (average irid.)
70. **N MEMPHIS 10 PC. RUFFLED FRUIT BOWL SET – PURP. (VERY SCARCE AND VERY DESIRABLE SET)**
71. **N HEARTS AND FLOWERS STEMMED 6 RUFFLED COMPOTE WITH RIBBED EXT. – AQUA OPAL. (A SUPER BUTTERSCOTCH EXAMPLE; REALLY NICE)**
72. N Hearts and Flowers Stemmed 6 Ruffled Compote with Plain Ext. – Ice Blue (another super Ice Blue item; great color)
73. N Hearts and Flowers Stemmed 6 Ruffled Compote with Ribbed Ext. – Mari. (average irid.)
74. 8 ¾" N Hearts and Flowers 8 Ruffled Bowl with Ribbed Ext. – Ice Blue (very scarce; nice example with great irid.)
75. **N CORN VASE WITH STALK BASE – ICE GREEN (VERY SCARCE AND VERY DESIRABLE; NICE BASE COLOR AND IRID.)**
76. N Corn Vase with Plain Base – White (very scarce item)
77. N Round Handled Bushel Basket – Aqua Opal. (very scarce; nice)
78. N Round Handled Bushel Basket – Ice Green (very scarce; nice)
79. N Round Handled Bushel Basket – Blue (has bright interior irid.)
80. N Round Handled Bushel Basket – Blue (average irid.)
81. N Round Handled Bushel Basket – Purp. (nice average irid.)
82. **N EIGHT SIDED HANDLED BUSHEL BASKET – GREEN (VERY SCARCE AND VERY DESIRABLE; TOUGH TO FIND)**
83. N Eight Sided Handled Bushel Basket – White (scarce item)
84. N Eight Sided Handled Bushel Basket – Mari. (scarce shape)
85. **N G & C (OR DUGAN) PERFUME BOTTLE AND STOPPER – PURP. (ABSOLUTELY SUPER EXAMPLE; GREAT ITEM)**
86. N G & C Covered Powder Jar – Purp. (very scarce item)
87. N G & C ftd. Hatpin Holder – Green (scarce and very attractive; nice)
88. N G & C ftd. Hatpin Holder – Mari. (nice)
89. N G & C Covered Butter Dish – Purp. (super color and irid.; nice)
90. **N G & C 7 PC. WATER SET – GREEN (RARE COLOR – TOUGH SET TO FIND)**
91. N G & C Master Berry Bowl and (3) individual Bowls – Green (tough color to find; selling as a set)
92. **N G & C OPEN RUFFLED COMPOTE – PURP. (RARE AND DESIRABLE; PERFECT WITH EXCELLENT IRID.)**
93. 7 5/8" N G & C Handgrip Plate with Basketweave Ext. – Amyth. (scarce; satiny)
94. 7 7/8" N G & C Double Handgrip Plate with Basketweave – Mari. (nice irid.; satiny)

| | | | |
|----------|--|----------|--|
| ___ 95. | N G & C (or Dugan) ftd. Banana Boat – Purp. (scarce; nice color) | ___ 120. | N EMBROIDERED MUMS FLAT PLATE WITH RIBBED EXT. – LIME ICE GREEN (RARE AND VERY DESIRABLE; SUPER BASE COLOR AND IRID.) |
| ___ 96. | N G & C (or Dugan) ftd. Banana Boat – Dk. Mari. (super example; great color and irid.) | ___ 121. | N ROSE SHOW FLAT PLATE – LIME ICE GREEN (EXTREMELY RARE AND VERY DESIRABLE; SUPER BASE COLOR AND IRID.) |
| ___ 97. | 9 ½" Tall x 4 5/16" Base N Wide Panel or Flute Mid-size Swung Vase – Green (very scarce; squatty size is cute) | ___ 122. | N ROSE SHOW 8 RUFFLED BOWL – DK. MARI. (EXCELLENT EXAMPLE; GREAT COLOR AND IRID.) |
| ___ 98. | 13 ¾" Tall x 4 5/16" Base N Wide Panel or Flute Mid-size Swung Vase – Green (scarce) | ___ 123. | N ROSE SHOW VARIANT FLARED PLATE – DK. MARI. (EXCELLENT EXAMPLE; SUPER IRID.) |
| ___ 99. | 17 ½" Tall x 4 5/16" Base N Wide Panel or Flute Mid-size Swung Vase – Green (scarce; tall) | ___ 124. | 10 7/8" N G & C Lg. 8 Ruffled Master Berry Bowl with Basketweave Ext. – Mari. (satiny; scarce) |
| ___ 100. | N ACORN BURR RUFFLED PUNCH BOWL AND BASE – NON-IRIDIZED LUNA (EXTREMELY RARE; NON-IRIDIZED WITH A DAMAGED POINT – NEVER SEEN ANOTHER) | ___ 125. | N G & C SMALL SIZE FTD. RUFFLED FRUIT BOWL – BLUE (RARE BASE COLOR; REALLY NICE IRID.) |
| ___ 101. | N ACORN BURR 7 PC. WATER SET – PURP. (VERY SCARCE AND VERY DESIRABLE) | ___ 126. | Pr. 6 ½" N'wood Stretch Bell Shaped Candlesticks – Celeste Blue (nice pair) |
| ___ 102. | N Acorn Burr 7 pc. Berry Set – Purp. (scarce and collectible; nice set) | ___ 127. | N Strawberry Plate with Basketweave Ext. – Mari. (satiny finish) |
| ___ 103. | 9" N Strawberry Plate with Basketweave Ext. – Amyth. (satiny; average irid.) | ___ 128. | FENTON G & C / PERSIAN MEDALLION INT. FTD. RUFFLED FRUIT BOWL – AMYTH. (VERY SCARCE AND DESIRABLE; NICE) |
| ___ 104. | 8 ½" N Strawberry Bowl with P.C.E. and Basketweave Ext. – Amyth. (another average satiny example) | ___ 129. | Fenton G & C / Persian Medallion Int. ftd. Ruffled Fruit Bowl – Mari. (nice irid.) |
| ___ 105. | 9" N STRAWBERRY 8 RUFFLED BOWL WITH BASKETWEAVE EXT. – PURP. (SUPER ITEM; HAS AN ODD BRIGHT MULTI-COLORED SATINY IRID.) | ___ 130. | 9" FENTON CAPTIVE ROSE FLARED PLATE – BLUE (VERY SCARCE; NICE) |
| ___ 106. | 8 5/8" N Strawberry Bowl with P.C.E. and Basketweave Ext. – Green (scarce; has an interesting reddish irid.) | ___ 131. | 9 5/8" Fenton Holly Flat Plate – Dk. Mari. (really attractive example) |
| ___ 107. | 9" N Strawberry Flared Plate with Plain Ext. – Green (very scarce; tough color to find) | ___ 132. | Fenton Orange Tree Covered Powder Jar – Blue (scarce) |
| ___ 108. | A P Fenton Christmas Compote – Ice Green Opal. (new and nice; super irid.) | ___ 133. | 8" Tall Imperial Miniature Morning Glory Swung Vase – Purp. (tall and very attractive) |
| ___ 109. | (2) N Raspberry Tumblers – Purp; (1) Dandelion Tumbler – Purp; and (1) N Memphis Punch Cup – Purp. (selling so much each for (4) items) | ___ 134. | 7" Tall Imperial Miniature Morning Glory Swung Vase – Smoke (another attractive example) |
| ___ 110. | 12 ¼" TALL X 5 ¼" BASE X 7 ½" TOP FLARE N TREE TRUNK SQUATTY ELEPHANTS FOOT FUNERAL VASE – PURP. (VERY RARE AND VERY DESIRABLE; HAS A CRACK – SATINY AND DESIRABLE) | ___ 135. | IMPERIAL FASHION 7 PC. WATER SET – SMOKE (VERY RARE AND VERY DESIRABLE SET WITH GREAT IRID.) |
| ___ 111. | N CORN VASE WITH PLAIN BASE – DK. MARI. (RARE AND VERY DESIRABLE; SUPER EXAMPLE) | ___ 136. | 9" TALL IMPERIAL PARLOR PANELS SWUNG VASE – SMOKE (SUPER EXAMPLE; GREAT IRID.) |
| ___ 112. | 8 ½" N Wishbone 8 Ruffled ftd. Bowl with Ruffles and Rings Ext. – Dk. Mari. (super) | ___ 137. | Imperial Crab Claw Handled Water Pitcher – Mari. (scarce pattern) |
| ___ 113. | N Standard size Tornado Vase – Purp. (scarce and nice but has a chip on the base) | ___ 138. | 9 5/8" Imperial Embossed Scroll Flat Plate – Purp. (super irid.) |
| ___ 114. | 9 ½" Tall N Drapery Variant Swung Vase – Blue (very scarce item) | ___ 139. | 9" Imperial Cobblestone 8 Ruffled Bowl – Purp. (very desirable item with super irid.) |
| ___ 115. | 13" TALL X 3 ¾" BASE N TREE TRUNK MID-SIZE VASE WITH PLUNGER BASE – DK. MARI. (VERY RARE ITEM; REALLY TOUGH TO FIND; NICE AND DARK) | ___ 140. | IMPERIAL COLONIAL LADY 4 SIDED VASE – PURP. (RARE AND VERY DESIRABLE; GREAT COLOR AND IRID.) |
| ___ 116. | 13 1/8" Tall x 4 5/8" Base N Tree Trunk Mid-size Swung Vase – Green (very scarce and very desirable) | ___ 141. | 9 ¾" TALL X 6" FLARE IMPERIAL BEADED BULLSEYE SWUNG VASE – PURP. (SUPER EXAMPLE WITH BRIGHT IRID.) |
| ___ 117. | 6" Tall x 5" Flare N Tree Trunk Squatty Flared Vase – Green (nice example; great satiny finish) | ___ 142. | Imperial Grape Water Carafe – Purp. (super) |
| ___ 118. | 10" Tall N Diamond Point Swung Vase – Dk. Mari. (really nice example) | ___ 143. | 9 ½" Dugan Big Basketweave Swung Vase – Sun Colored White (a bit of light amethyst to the base color) |
| ___ 119. | N PEACOCK AT THE FOUNTAIN FTD. RUFFLED FRUIT BOWL – BLUE / ELEC. BLUE (RARE & VERY DESIRABLE; SUPER) | ___ 144. | 10 ¼" Dugan Big Basketweave Swung Vase – Mari. (scarce) |
| | | ___ 145. | 8 3/8" DUGAN ROUND UP VERY LOW I.C. SHAPED BOWL / PLATE – PURP. (VERY DESIRABLE; NON-IRIDIZED SPOT IN CENTER) |

| | | | |
|------|--|------|--|
| 146. | 7 1/2" DUGAN GRAPEVINE LATTICE FLAT PLATE – PURP. (RARE AND VERY DESIRABLE; SUPER IRID. – A GREAT ITEM) | 171. | 8 1/2" M'burg Grape Wreath Variant Bowl with 3 in 1 Edge – Mari. (radium finish) |
| 147. | 6 5/8" DUGAN WISHBONE AND SPADES FLAT PLATE – PURP. (VERY DESIRABLE; A SUPER) | 172. | 5 5/8" M'burg Blackberry Wreath ind. Berry Bowl with 3 in 1 Edge – Mari. (radium) |
| 148. | 6 1/2" Dugan Four Flower Flat Plate with Basketweave Ext. – P. Opal. (really nice item) | 173. | 9 1/2" M'burg Rays and Ribbons 6 Ruffled Bowl – Amyth. (satiny finish) |
| 149. | 8 3/8" DUGAN paneled cherries 10 Ruffled 3 FTD. BOWL – PURP. (VERY DESIRABLE; SUPER COLOR AND IRID.) | 174. | 7 3/4" M'burg Little Stars 6 Ruffled Bowl – Green (satiny; scarce) |
| 150. | DUGAN CONSTELLATION STEMMED 6 RUFFLED COMPOTE – AMYTH. (HAS TO BE THE BEST EXAMPLE I'VE EVER SEE; SUPER IRID.) | 175. | 8 3/4" DUGAN ROUND UP LOW 10 RUFFLED BOWL / PLATE – PURP. (ABSOLUTELY FANTASTIC EXAMPLE; ELECTRIC IRID.!!!) |
| 151. | Dugan Peacock Tail Variant Stemmed 6 Ruffled Compote – Amyth. (rare and very tough to find... and NO!, they are not Millersburg) | 176. | 10 1/8" DUGAN cherries 6 RUFFLED BOWL WITH J.H. EXT. – PURP. (RARE AND VERY DESIRABLE; GREAT COLOR IRID.) |
| 152. | Dugan Cherry Wreath Lg. Oval Master Berry Bowl – White (frosty and scarce) | 177. | 9 1/4" N GOOD LUCK PLATE WITH BASKETWEAVE EXT. – PURP. (RARE AND VERY DESIRABLE; ATTRACTIVE ITEM) |
| 153. | Cambridge Inverted Feather Stemmed 6 Ruffled Compote – Mari. (nice color) | 178. | 9" N Three Fruits Stippled Plate with Ribbed Ext. – Blue / Elec. Blue (very scarce and very desirable; nice blue highlights) |
| 154. | 9 3/4" M'burg Rosiland 6 Ruffled Bowl – Mari. (satiny finish) | 179. | N Fruit and Flowers Stemmed 2 Handled Bon Bon with Basketweave Ext. – Purp. (Elec. Purple if you would – a great example) |
| 155. | 8 3/4" M'BURG TROUT AND FLY LOW I.C. SHAPED BOWL – GREEN (RARE AND VERY DESIRABLE; SUPER SATINY FINISH) | 180. | 9 5/8" FENTON PEACOCK AT THE URN FLAT PLATE – BLUE (EXCELLENT BRIGHT MULTI-COLORED IRID.) |
| 156. | 8 1/4" M'BURG TROUT AND FLY I.C. SHAPED BOWL – AMYTH. (SATINY; DESIRABLE) | 181. | 9 3/8" Fenton Orange Tree Flat Plate – Blue (very desirable with nice blue highlights) |
| 157. | 8 7/8" M'BURG TROUT AND FLY BOWL WITH 3 IN 1 EDGE – GREEN (RADIUM AND VERY DESIRABLE; GREAT IRID.) | 182. | 8 1/4" FENTON DRAGON AND LOTUS I.C. SHAPED BOWL – AMBER OPAL. (SATINY WITH AVERAGE IRID.; BASE COLOR AND OPAL. ARE RARE) |
| 158. | 9 1/4" M'BURG TROUT AND FLY 6 RUFFLED BOWL – AMYTH. (NICE SATINY EXAMPLE) | 183. | 8 3/4" Fenton Concord Grape 6 Ruffled Bowl – Amyth. (very scarce pattern; desirable item) |
| 159. | 10 3/8" M'burg Fleur de Lei Bowl with 3 in 1 Edge – Amyth. (radium and has great irid.) | 184. | CAMBRIDGE INVERTED STRAWBERRY SPITTOON – DK. MARI. (EXCELLENT EXAMPLE WITH SUPER COLOR AND IRID.) |
| 160. | 9 1/4" Tall M'burg Swirl Hobnail Swung Vase – Green (rare base color; satiny and nice; peeling on edge) | 185. | RIIHIMAKI TENNESSEE STAR SPITTOON SHAPED / VASE – AMBER (RARE AND VERY DESIRABLE ITEM; SUPER PIECE OF GLASS) |
| 161. | M'burg Hobstar and Feather Handled Punch Cup – Green (satiny; tough) | 186. | BROCKWITZ DAISY AND CANE OR "TARTAN" SPITTOON – BLUE (RARE AND DESIRABLE; GREAT COLOR) |
| 162. | 5 1/8" TALL X 9 1/2" DIAM. CAMBRIDGE INVERTED STRAWBERRY LG. COMPOTE – PURP. (RARE AND VERY DESIRABLE; SORTA RADIUM) | 187. | EUROPEAN LUCILLE 7 PC. WATER SET – BLUE (EXTREMELY RARE; I'VE NEVER SOLD A SET) |
| 163. | M'burg Boutonniere Stemmed 6 Ruffled Compote – Amyth. (radium and very desirable) | 188. | Sowerby English Hobstar Banana Boat Shaped Bowl in Metal Basket Frame – Mari. (scarce) |
| 164. | M'burg Peacock Tail Variant 6 Ruffled Compote – Mari. (radium finish; has an odd ruffle) | 189. | Czech Stemmed Covered Compote with Cobalt Blue Cut Back Decor. – Mari. (attractive item) |
| 165. | 10 1/4" M'BURG STRAWBERRY WREATH LG. 6 RUFFLED BOWL – AMYTH. (MY FAVORITE ITEM; RADIUM BLUE AND RED FINISH – SUPER!!!!) | 190. | 8 1/2" FENTON G & C BALL FTD. 8 RUFFLED BOWL – CELESTE BLUE (VERY RARE AND EXTREMELY DESIRABLE; SUPER COLOR AND IRID.) |
| 166. | 10 1/2" M'BURG PEACOCK AT THE URN LG. BOWL WITH 3 IN 1 EDGE – GREEN (RADIUM; HAS BEE, BUT NO BEADING) | 191. | 5 1/4" TALL FENTON DAISY SQUARES CRIMPED EDGE COMPOTE – LIME GREEN / MARI. (VERY RARE AND DESIRABLE ITEM; REALLY NICE) |
| 167. | 9 5/8" M'burg Peacock Flared Master Berry Bowl – Dk. Mari. (radium; bottom flute has been polished) | 192. | Fenton Kittens 2 sided Banana Dish – Lt. Blue / Mari. (odd tint to the base color; scarce) |
| 168. | 5 1/2" M'burg Peacock Flared ind. Berry Bowl – Mari. (radium) | 193. | 11" Fenton Two Flowers Lg. Ball ftd. 8 Ruffled Bowl – Blue (really nice item; attractive with great color) |
| 169. | 9 3/4" M'burg Primrose 6 Ruffled Bowl – Green (radium finish) | | |
| 170. | 9" M'burg Fleur de Lei domed I.C. Shaped Bowl – Mari. (radium; has some chips on footed base) | | |

- ___194. 12 1/2" Tall Signed Fenton G & C Whimsey Swung Vase from Humidor Base – Purp. (probably from the 1980's; really neat)
- ___195. **N PEACOCK AT THE FOUNTAIN 8 PC. RUFFLED PUNCH SET – PURP. (RARE AND DESIRABLE SET BOWL, BASE AND (1) CUP ARE EXCEPTIONAL)**
- ___196. N Peacock at the Fountain Spooner – Purp. (nice color and irid.)
- ___197. **8 3/4" N PEACOCKS 8 RUFFLED BOWL WITH RIBBED EXT. – ELEC. BLUE (SUPER BLUE FINISH; BRIGHT AND NICE)**
- ___198. 8 7/8" N Peacocks Bowl with P.C.E. and Ribbed Ext. – Mari. (scarce; nice average color)
- ___199. N G & C ftd. Hatpin Holder – Purp. (scarce; satiny)
- ___200. **N G & C STANDARD SIZE PUNCH BOWL AND BASE – PURP. (VERY SCARCE; WELL MATCHED; WOBBLER A BIT)**
- ___201. N G & C 12 pc. Ruffled Berry Set with Basketweave Ext. – Amyth. (must have been part of a large family; nice)
- ___202. 9 1/8" N G & C Plate with Basketweave Ext. – Purp. (nice dark green and yellow irid. with a stretch effect)
- ___203. 7 1/2" N G & C 6 Ruffled Bowl with Basketweave Ext. – Green (super irid.)
- ___204. 8" N G & C 2 sided Banana Dish with Basketweave Ext. – Green (scarce color; sorta nice)
- ___205. N G & C Handled Bon Bon with Basketweave Ext. – Green (nice color and irid.)
- ___206. 8" N G & C Handgrip Plate with Basketweave Ext. – Amyth. (satiny; scarce)
- ___207. 7 1/2" N Fruit and Flowers 6 Ruffled Bowl with Basketweave Ext. – Green (very scarce color)
- ___208. 7 1/4" N Fruit and Flowers 6 Ruffled Bowl with Basketweave Ext. – Amyth. (scarce; satiny)
- ___209. 9" N Three Fruits Plate with Plain Ext. – Amyth. (lighter base glass; satiny)
- ___210. **8 7/8" N THREE FRUITS MEDALLION STIPPLED 8 RUFFLED 3 FTD. BOWL WITH MEANDER EXT. – AQUA OPAL. (VERY DESIRABLE; PASTEL FINISH)**
- ___211. **8 1/4" N WISHBONE 3 FTD. PLATE WITH RUFFLES AND RINGS EXT. – AMYTH. (RARE WITH A NICE SATINY FINISH)**
- ___212. 6 3/4" M'burg Grape Wreath Variant 6 Ruffled Bowl – Green (radium and nice)
- ___213. 6 1/4" Dugan Ski Star 8 Ruffled Sauce – Amyth. (scarce)
- ___214. 10" Fenton Cherry Chain 8 Ruffled Bowl – Blue (nice; satiny)
- ___215. **11 1/4" DUGAN PERSIAN GARDEN LG. I.C. BOWL – P. OPAL. (RARE; DESIRABLE AND VERY ATTRACTIVE)**
- ___216. **DUGAN PERSIAN GARDEN 7 PC. RUFFLED BERRY SET – P. OPAL. (RARE AS A COMPLETE SET; TOUGH TO FIND)**
- ___217. **11 7/8" DUGAN PERSIAN GARDEN LG. 6 RUFFLED FRUIT BOWL TOP ONLY – P. OPAL. (VERY SCARCE ITEM; NICE OPAL.)**
- ___218. Dugan Fishnet Epergne with 3 in 1 Edge – P. Opal. (scarce item; hole is crooked – lily tilts)
- ___219. Dugan Nautilus Whimsey Creamer – P. Opal. (nice opal.; scarce)
- ___220. **8 1/4" DUGAN FLOWERS AND FRAMES DOMED TRI-CORNERED CRIMPED EDGE BOWL – P. OPAL. (RARE SHAPE FOR THIS PATTERN IN THIS COLOR)**
- ___221. 7 7/8" Dugan Dogwood Sprays domed deep 10 Ruffled Bowl – P. Opal. (attractive shape)
- ___222. 6 3/4" Dugan Bellflower 8 Ruffled Bowl – P. Opal. (nice opal.)
- ___223. 9" Dugan Apple Blossom Twigs Bowl with 3 in 1 Edge – P. Opal. (nice irid.)
- ___224. 8 7/8" Dugan Apple Blossom Twigs low 10 Ruffled Bowl / Plate – P. Opal. (satiny)
- ___225. 9 1/4" Dugan Round Up low 10 Ruffled Bowl – P. Opal. (attractive with nice opal. and overlay)
- ___226. 9 1/4" Dugan Fanciful low 10 Ruffled Bowl / Plate – Lt. P. Opal. (scarce; satiny)
- ___227. 9" Dugan Fanciful Flat Plate – Mari. (a very nice satiny example)
- ___228. 7 1/8" Dugan Holly Whirl 10 Ruffled Bowl – Purp. (satiny finish)
- ___229. 5 5/8" Dugan Wishbone and Spades Deep Ruffled Bowl – Purp. (satiny finish)
- ___230. **9" DUGAN FANCIFUL LOW 10 RUFFLED PLATE – PURP. (ABSOLUTELY FANTASTIC; BRIGHT MULTI-COLORED IRID.)**
- ___231. 9 1/2" Dugan Cherries 6 Ruffled Bowl with J.H. Ext. – Purp. (very scarce with bright irid.;)
- ___232. Dugan Big Basketweave 8 Ruffled Base for Fruit Bowl – Lavender (very tough part if ya need it)
- ___233. **5 1/2" DUGAN AMARYLLIS FTD. FLARED DEEP PLATE WHIMSEY – PURP. (SATINY FINISH; TOUGH TO FIND)**
- ___234. Dugan Floral and Grape Bulbous Water Pitcher and (3) Tumblers – Amyth. (bright irid.; selling as a set)
- ___235. Dugan Vineyard 7 pc. Bulbous Water Set – Purp. (rare set to find; damage to at least (3) tumblers)
- ___236. Dugan Stork in the Rushes 7 pc. Water Set – Mari. (one of the tougher Marigold sets to find)
- ___237. **DUGAN CHERRY WREATH HANDLED WATER PITCHER – DK. MARI. (A REAL BEAUTY; SUPER DARK)**
- ___238. 10 3/4" Tall Dugan Lined Lattice Swung Vase – Purp. (tall; nice example)
- ___239. 12" Tall Dugan Pulled Loop Swung Vase – Purp. (dark satiny irid.)
- ___240. **8 1/8" DUGAN SKI STAR DOMED FTD 10 RUFFLED BOWL WITH COMPASS EXT. – PURP. (RARE ITEM IN THIS COLOR AND SHAPE; NICE MULTI-COLORED IRID.)**
- ___241. **8 7/8" X 7 3/4" DUGAN SKI STAR CRIMPED EDGE PULLED OUT BANANA DISH – AMYTH. (ANOTHER REALLY ATTRACTIVE EXAMPLE; RARE SHAPE AND COLOR)**
- ___242. 7 3/4" Dugan Flowers and Frames domed deep 10 Ruffled Bowl – Purp. (very scarce; nice)
- ___243. Dugan Dahlia 4 ftd Master Berry Bowl – White (nice big frosty item)

| | | | |
|------|---|------|---|
| 244. | 6 1/4" Tall Dugan Many Ribs 6 Ruffled Vase – Purp. (nice color) | 269. | 12 1/2" Tall Imperial Parlor Panels Tall Swung Vase – Smoke (a super example; taller than normal) |
| 245. | DUGAN STRAWBERRY SINGLE LILY EPERGNE – PURP. (RARE ITEM WITH A SILVERY FINISH) | 270. | 12" TALL X 8" FLARE X 5" BASE IMPERIAL MORNING GLORY SQUATTY FUNERAL VASE – GREEN (NOW I REALLY LIKE THIS VASE; SHORT AND FLARED – GREAT SIZE) |
| 246. | 10" Dugan Wishbone and Spades Lg. 8 Ruffled Bowl – Purp. (very scarce; attractive and nice) | 271. | 11 1/2" TALL X 8 3/4" FLARE X 5" BASE IMPERIAL MORNING GLORY SQUATTY FLARED FUNERAL VASE – DK. MARI. (ANOTHER SQUATTY EXAMPLE WITH GREAT COLOR AND SIZE) |
| 247. | Dugan Cherry Wreath 7 pc. Oval Ruffled Berry Set – Purp. (well matched set with a bright glossy finish) | 272. | 7" TALL X 8 3/4" FLARE X 4 7/16" BASE IMPERIAL STRETCH INTERIOR PANEL SQUATTY FUNERAL VASE – WHITE (RARE SIZE FOR THIS SHAPE; SUPER STRETCH FINISH) |
| 248. | 9" Dugan Grape Arbor Lg. 4 fld. Bowl with I.F.F. Ext. – Mari. (really nice satiny finish) | 273. | (1) 3 1/8" x 7 1/2" & (1) 3 3/4" x 6 3/4" Imperial Iron Cross Interior Panel Squatty Flared Vases – Clamb. (selling 2 for 1 – both signed) |
| 249. | 10 1/2" Tall Jenkins Daisy and Diamond Cut Vase – Dk. Mari. (scarce and attractive) | 274. | 8 7/8" Tall Imperial Beaded Bullseye Swung Vase – Amber (rare base color; dark and desirable) |
| 250. | 8 1/2" European Four Flower Variant Flared Round Bowl – Emerald Green (great base color and irid.) | 275. | 12" TALL IMPERIAL POPPY SHOW VASE – DK. MARI. (ALWAYS POPULAR; HAS NICE DARKER FINISH) |
| 251. | 8 5/8" Westmoreland Carolina Dogwood Deep Round Bowl – Mari. / Milk Glass (nice marigold overlay) | 276. | 6 3/4" Tall x 2 1/2" Base Imperial Ripple Miniature Swung Vase – Mari. (nice size) |
| 252. | 8 1/2" Westmoreland Wide Panel J.I.P. Vase – Amyth. (scarce; nice example) | 277. | 14" Tall x 5 1/2" Flare x 4" Base Imperial Ripple Mid-size Swung Vase – Mari. (nice color and irid.) |
| 253. | IMPERIAL GRAPE WINE DECANTER AND STOPPER – SMOKE (RARE BASE COLOR; HAS A WELL MATCHED STOPPER) | 278. | 15 3/8" Tall x 4 3/4" Flare x 4" Base Imperial Ripple Mid-size Swung Vase – Mari. (nice color and irid.) |
| 254. | 8 1/2" IMPERIAL EMBOSSED SCROLL DEEP 8 RUFFLED BOWL – EMERALD GREEN (SUPER EXAMPLE WITH ELEC. IRID.) | 279. | 5" Tall x 3 7/8" Flare Imperial Miniature Morning Glory Vase and Imperial Rococo Vase – Mari. (selling both for one money; tiny flake on Rococo) |
| 255. | 10 1/4" IMPERIAL HOMESTEAD NUART CHOP PLATE – NOT SIGNED – GREEN (VERY RARE; VERY DESIRABLE; SUPER IRID. WITH YELLOW HIGHLIGHTS) | 280. | 8 1/2" TALL X 5 3/4" FLARE X 3 3/8" BASE IMPERIAL RIPPLE SWUNG VASE – AMYTH. (ODD TINT TO BASE COLOR; SUPER IRID.) |
| 256. | 6 7/8" IMPERIAL WINDMILL DEEP ROUND BOWL – GREEN (WHEN DO YOU SEE THIS ITEM IN A PRETTY GREEN?) | 281. | (1) Imperial Ribbed J.I.P. Vase and (1) Imperial Ripple Vase Swung Vase – (1) Mari. (2) Purp. – J.I.P. is OK – the Ripple has an interior check) |
| 257. | 8 3/4" Imperial Floral and Optic Stretch Flared ftd. Bowl – Teal (very scarce; nice color – good feet) | 282. | 11 1/2" Tall x 3 3/8" Base Imperial Ripple Swung Vase – Purp. (super irid.) |
| 258. | Signed Imperial Iron Cross Lustre Rose 3 fld. Fernery – non-iridized Teal (quite a rare item) | 283. | 12 1/4" Tall x 3 3/8" Base Imperial Ripple Swung Vase – Purp. (nice irid.) |
| 259. | 9 1/4" Imperial Lustre Rose 3 fld. Centerpiece Bowl – Dk. Mari. (very scarce with super color and irid.) | 284. | Imperial Pansy Oblong Flared Relish Tray – Purp. (scarce) |
| 260. | 6" TALL IMPERIAL WAFFLE BLOCK FTD. FLARED VASE – SMOKE (ONE VERY RARE ITEM TO FIND; I'VE NEVER SOLD ONE) | 285. | 9 5/16" IMPERIAL PANSY LOW 8 RUFFLED PLATE – LT. AMYTH. (VERY SCARCE AND VERY DESIRABLE; GREAT EXAMPLE) |
| 261. | 4 3/4" Tall Imperial Waffle Block Stemmed Jelly Compote – Clamb. (another really tough Frosted Block item) | 286. | 9" Imperial Pansy low 8 Ruffled Bowl – Amyth. (average example) |
| 262. | 8 5/8" Imperial Hattie Deep Flared Bowl – Smoke (super irid. – really nice) | 287. | 9 3/4" Imperial Embossed Scroll Flat Plate – Purp. (super irid.) |
| 263. | 9 1/4" Imperial Heavy Grape 8 Ruffled Lg. Berry Bowl – Smoke (very rare color for this item; super irid.) | 288. | 9 1/2" Imperial Embossed Scroll Flat Plate and 9" Imperial Open Rose Plate – Mari. (E.S. Plate has manuf. flaw; selling 2 for 1) |
| 264. | Imperial Hobstar Sugar Base Whimsey cause the lid don't fit – Purp. (I have a lid – it did not fit – selling as a rare vase) | 289. | 7 1/2" Imperial Embossed Scroll ftd. 8 Ruffled Compote with Curved Star Ext. – Purp. (super irid.) |
| 265. | 3 3/4" TALL X 5 5/8" DIAM. IMPERIAL JEWELS SIGNED IRON CROSS SQUATTY FLARED VASE – PURP. (SUPER LITTLE ITEM; PINHEAD AT BASE) | 290. | 10 1/4" TALL IMPERIAL 474 FTD. VASE – MARI. (RARE AND VERY DESIRABLE; DARK AND NICE) |
| 266. | 8" X 7 1/2" IMPERIAL JEWELS SIGNED IRON CROSS 4 SIDED BOWL – MARI. (VERY SCARCE AND VERY DESIRABLE) | 291. | Imperial Octagon 8 pc. Wine Set – Mari. (well matched set) |
| 267. | Pair Double Scroll Candlesticks – Smoke (scarce; a well matched pair) | | |
| 268. | (1) Imperial Cockatoo Wall Pocket and (1) Hummingbird Wall Pocket – Mari. (selling both for one price) | | |

| | | | |
|----------|---|----------|--|
| ___ 292. | 7 ¾" Imperial Acanthus Deep Round Bowl – Smoke (super irid.) | ___ 318. | 8 ¾" Fenton Peacock and Grape 8 Ruffled Bowl with 3 in 1 Edge – Green (attractive item) |
| ___ 293. | 9" Imperial Star of David 8 Ruffled Bowl – Amyth. (scarce; sorta silvery) | ___ 319. | 9" Fenton Peacock and Grape 8 Ruffled Bowl – Green (odd satiny finish) |
| ___ 294. | Imperial Grape 7 pc. Punch Set – Helios Green (sorta Olive Green – base has large chip) | ___ 320. | 9 3/8" FENTON LOTUS AND GRAPE FLAT PLATE – GREEN (VERY RARE AND EXTREMELY DESIRABLE; GREAT COLOR) |
| ___ 295. | IMPERIAL WINDMILL HANDLED MILK PITCHER – GREEN (SCARCE; HAS A BRIGHT BASE COLOR) | ___ 321. | 7 1/8" Fenton Lotus and Grape 3 ftd. 6 Ruffled Bowl – Mari. / Vaseline (scarce; nice base color and satiny finish) |
| ___ 296. | Fenton Two Row Open Edge 2 sided Hat – Sapphire / Mari. (scarce base color) | ___ 322. | 7 ½" FENTON G & C LOW 8 RUFFLED BOWL – RED (RARE ITEM; SATINY FINISH – NICE BASE COLOR) |
| ___ 297. | (2) Fenton Two Row Open Edge 6 Ruffled Hats – (1) Mari. / Vaseline, (1) Mari. (selling 2 for 1 money) | ___ 323. | 7 5/8" Fenton G & C low 8 Ruffled Bowl – Blue (has to be the best example I've seen) |
| ___ 298. | Fenton Two Row Open Edge 2 sided Hat – Lt. Mari. / Vaseline (good looking' item) | ___ 324. | 9" Fenton G & C spatula ftd. Flat Plate – Dk. Mari. (nice dark color) |
| ___ 299. | Fenton Two Row Open Edge J.I.P. Hat – Red (scarce; nice dark satiny finish) | ___ 325. | 12" FENTON TWO FLOWERS BALL FTD. FLAT CHOP PLATE – DK. MARI. (VERY RARE AND VERY DESIRABLE; GREAT COLOR AND IRID.) |
| ___ 300. | FENTON BLACKBERRY 2 ROW OPEN EDGE 4 SIDED HAT – RED (RARE ITEM; VERY ATTRACTIVE EXAMPLE) | ___ 326. | 9 ¾" Fenton Leaf Chain Plate – Clamb. (really nice irid.) |
| ___ 301. | Fenton Blackberry 2 Row Open Edge 6 Ruffled Hat – Green (nice color) | ___ 327. | 9 ½" Fenton Leaf Chain Plate – White (nice irid.) |
| ___ 302. | (2) Fenton Blackberry 2 Row Open Edge 6 Ruffled Hats – (1) Blue; (1) Mari. | ___ 328. | 8 ¼" Fenton Leaf Chain I.C. Shaped Bowl – White (nice irid.) |
| ___ 303. | Fenton Horsehead Medallion ftd. J.I.P. Bowl – Mari. | ___ 329. | (1) 6 3/8" Fenton Cherry Chain Plate – Blue and (1) 6 ¼" Fenton Persian Medallion Plate – Mari. (selling both items for one) |
| ___ 304. | 7 ¾" Fenton Horsehead Medallion Flat Plate – Mari. (scarce; nice satiny finish) | ___ 330. | 9 5/8" FENTON CAPTIVE ROSE FLARED PLATE – DK. MARI. (AN EXCELLENT EXAMPLE DARK WITH GREAT IRID.) |
| ___ 305. | 9 ¼" TALL FENTON RUSTIC STANDARD SWUNG VASE – P. OPAL. (RARE AND VERY DESIRABLE; NICE OPAL. AND IRID. – HAS AN OPEN BUBBLE ON BASE) | ___ 331. | 9" Fenton Captive Rose 6 Ruffled Bowl – Blue (nice irid.) |
| ___ 306. | 9 5/8" Tall Fenton Rustic Standard Swung Vase – White (nice and frosty) | ___ 332. | 7 ½" Fenton Acorn 8 Ruffled Bowl – Amber (iridized on the exterior; unusual) |
| ___ 307. | 9 ½" Tall Fenton Rustic Standard Swung Vase with T.C.E. – Blue | ___ 333. | 8 ½" Fenton Dragon and Lotus 8 Ruffled Bowl – Blue (really neat... has radium finish) |
| ___ 308. | 15 ¼" Tall x 4 3/16" Base Fenton Rustic Mid-size Swung Vase – Amyth. (satiny finish) | ___ 334. | 8" Fenton Dragon and Lotus Spatula ftd. 8 Ruffled Bowl – Green (scarce; satiny) |
| ___ 309. | 10 ½" TALL X 4 ¼" BASE FENTON RUSTIC MID-SIZE SQUATTY VASE – GREEN (NEAT SQUATTY SHAPE; UNUSUAL) | ___ 335. | 9 ¼" FENTON PEACOCK AT THE URN FLARED PLATE – BLUE (RARE AND DESIRABLE; NICE IRID.) |
| ___ 310. | 19 ¾" TALL X 7 ½" FLARE X 5 1/8" BASE FENTON RUSTIC SWUNG FUNERAL VASE – BLUE / ELEC. BLUE (VERY DESIRABLE; MUCH BETTER THAN THE PHOTO; HAS ELEC. BLUE HIGHLIGHTS) | ___ 336. | 9 ¾" FENTON PEACOCK AT THE URN FLAT PLATE – DK. MARI. (SUPER EXAMPLE; GREAT COLOR AND IRID.) |
| ___ 311. | 18 3/8" Tall x 7 ½" Flare x 5 3/8" Base Fenton Rustic Swung Funeral Vase – Dk. Mari. (another very desirable item – dark with great irid.) | ___ 337. | 8" Fenton Peacock at the Urn I.C. Shaped Bowl – Blue (nice color and shape) |
| ___ 312. | 16 1/8" Tall Fenton Rustic Mid-size Swung Vase with T.C.E. – Blue (nice size and color) | ___ 338. | 8 ¾" Fenton Peacock at the Urn 8 Ruffled Bowl – Mari. (satiny) |
| ___ 313. | 5 ½" Tall Fenton Ribbed J.I.P. Vase – Blue (actually quite a very rare item; very attractive) | ___ 339. | Fenton Orange Tree Breakfast Sugar and Creamer and a Dugan Vintage Grape Covered Powder Jar – Mari. |
| ___ 314. | Fenton Rose Spray J.I.P. Stemmed Compote – Celeste Blue (scarce) | ___ 340. | 9 5/8" FENTON ORANGE TREE FLARED PLATE – ELEC. BLUE (VERY DESIRABLE; A BRIGHT FINISH WITH BLUE HIGHLIGHTS) |
| ___ 315. | 9" FENTON THISTLE FLAT PLATE – DK. MARI. (VERY RARE AND VERY DESIRABLE; GREAT SATINY FINISH) | ___ 341. | 9 ½" FENTON ORANGE TREE FLARED PLATE – DK. MARI. (SUPER DARK WITH GREAT IRID.) |
| ___ 316. | 7 ¾" Fenton Thistle Bowl with T.C.E. – Blue (satiny finish) | ___ 342. | 9 5/8" Fenton Orange Tree with Trunk Flat Plate – Mari. (scarce item) |
| ___ 317. | 8 7/8" Fenton Peacock and Grape 8 Ruffled Bowl – Amyth. (great irid.) | ___ 343. | 9 ½" Fenton Orange Tree with Trunk Flared Plate – Mari. / Exterior Iridized (unusual with exterior irid.) |
| | | ___ 344. | Fenton Flowers ftd. Rose Bowl – Blue (damaged feet) |

| | | | |
|------|---|------|--|
| 345. | FENTON ORANGE TREE HANDLED LOVING CUP – GREEN (RARE AND DESIRABLE; EXCELLENT COLOR AND IRID.) | 369. | 9 5/8" Fenton Holly Flared Plate – White (frosty with pink and blue highlights) |
| 346. | FENTON ORANGE TREE HANDLED LOVING CUP – BLUE (SUPER COLOR AND IRID.; AN EXCELLENT EXAMPLE) | 370. | FENTON HOLLY GOBLET SHAPED STEMMED COMPOTE – RED (RARE; DARK COLOR AND VERY DESIRABLE) |
| 347. | FENTON ORANGE TREE HANDLED LOVING CUP – DK. MARI. (SUPER COLOR AND DARK AND NICE) | 371. | 9 1/8" Fenton Holly 8 Ruffled Bowl – Blue (really attractive electric highlights) |
| 348. | Fenton Orange Tree 7 pc. Flared Punch Set – Mari. | 372. | Fenton Mikado Lg. Flared Stemmed Compote – Dk. Mari. (one of the better examples; dark and nice) |
| 349. | (2) FENTON ORANGE TREE FTD. RUFFLED FRUIT BOWLS – (1) BLUE, (1) DK. MARI. (BOTH SUPER) | 373. | Fenton Thistle Oval ftd. Banana Boat – Blue (very scarce; interior a bit silvery) |
| 350. | 6 1/2" TALL X 6 1/2" FLARE X 5 3/16" FENTON DIAMOND RIB JARDINEERE WHIMSEY – GREEN (EXTREMELY RARE AND VERY DESIRABLE; SUPER TOUGH!) | 374. | Fenton Thistle Oval ftd. Banana Boat – Dk. Mari. (really nice example; dark and nice) |
| 351. | 20" TALL X 8" FLARE X 5 1/4" BASE FENTON DIAMOND RIB SWUNG FUNERAL VASE – AMYTH. (ANOTHER EXTREMELY DESIRABLE ITEM) | 375. | FENTON BUTTERFLY AND BERRY 7 PC. WATER SET – BLUE (RARE & DESIRABLE; (2) TUMBLERS ARE SATINY – THE REST ARE REALLY NICE) |
| 352. | 7 3/4" Tall x 3 5/8" Base Fenton Squatty 6 Ruffled Vase – Blue (very scarce with great detail) | 376. | Fenton Butterfly and Berry ftd. Covered Butter Dish & a 5 pc. Round Berry Set – Mari. (selling all as one lot) |
| 353. | Pair 11 – 11 1/2" Tall Fenton April Showers Swung Vases with C.R.E. – Blue (really nice pair – well matched and desirable) | 377. | Fenton Butterfly and Berry ftd. Ruffled Master Berry Bowl – Amyth.; and a 3 pc. Panther ftd. Berry Set – Mari. (selling all 4 items for one price) |
| 354. | (3) Fenton Vases: 11 1/4" Tall April Showers, 10" Tall Knotted Beads (crimped edge) and 17 3/4" Diamond Point Columns – Mari. (selling all (3) for one money) | 378. | 9" Fenton Little Fishes ftd. I.C. Shaped Bowl – Dk. Mari. (an excellent example with bright color and irid.) |
| 355. | 12" Tall Fenton Fine Rib Mid-size Swung Vase – Green (scarce color and very attractive) | 379. | FENTON CHERRY CIRCLES 2 SIDED HANDLED BON BON – AQUA / MARI. (RARE BASE COLOR; NOT MANY FOUND) |
| 356. | 11 3/4" Tall Fenton Fine Rib Swung Vase – Amber (scarce item with nice base color) | 380. | FENTON 10 MUMS TANKARD WATER PITCHER – DK. MARI. (RARE AND REALLY NICE – HAS A MANUF. BUBBLE BURST ON BASE) |
| 357. | Fenton Orange Tree ftd. Hatpin Holder – Blue (scarce; very desirable) | 381. | Fenton Persian Medallion Lg. Stemmed 6 Ruffled Compote with 3 in 1 Edge – Blue (attractive; nice) |
| 358. | Fenton ftd. Orange Tree Covered Butter, Covered Sugar, Creamer, and Master Berry Bowl – Mari. (selling all for one money) | 382. | Fenton Persian Medallion Rose Bowl – Blue (really nice example) |
| 359. | 7 7/8" Fenton Vintage Grape Flat Plate – Amyth. (scarce; has a radium type irid.) | 383. | (2) Fenton Handled Bon Bons: (1) Peacock Tail – Green; (1) Persian Medallion – Blue (selling 2 for 1) |
| 360. | 11" FENTON STAG AND HOLLY LG. 3 FTD. 8 RUFFLED BOWL – MARI. / VASELINE (RARE AND VERY DESIRABLE; GREAT BASE COLOR AND DETAIL) | 384. | Fenton Persian Medallion 4 sided 2 Handled Bon Bon – Mari. / Vaseline (very scarce base color; nice) |
| 361. | 10 7/8" Fenton Stag and Holly Lg. ball ftd. I.C. Shaped Bowl – Blue (scarce; sorta silvery) | 385. | FENTON PERSIAN MEDALLION 4 SIDED 2 HANDLED BON BON – RED (RARE BASE COLOR; SATINY FINISH) |
| 362. | 10 1/2" Fenton Stag and Holly Lg. ball ftd. I.C. Shaped Bowl – Mari. (super highlights) | 386. | 10 5/8" FENTON PERSIAN MEDALLION CHOP PLATE – BLUE (SCARCE & DESIRABLE; NICE) |
| 363. | 9 1/2" Fenton Stag and Holly Lg. ball ftd. Deep 8 Ruffled Bowl – Mari. (scarce; nice dark color) | 387. | 9 1/4" Fenton Persian Medallion 6 Ruffled Bowl – Green (very scarce color) |
| 364. | 10 7/8" FENTON STAG AND HOLLY LG. BALL FTD. 8 RUFFLED BOWL – BLUE / ELEC. BLUE (DESIRABLE AND REALLY ATTRACTIVE WITH BLUE HIGHLIGHTS) | 388. | Fenton Persian Medallion Hair Receiver – Lt. Mari. |
| 365. | Fenton G & C / Persian Medallion Int. ftd. Ruffled Fruit Bowl – Blue (very scarce and desirable) | 389. | 9 1/2" Fenton Lotus and Poinsettia ball ftd. I.C. Shaped Bowl – Dk. Mari. (great color) |
| 366. | Fenton Holly Crimped Edge J.I.P. Hat – Green (rare color to find; satiny finish) | 390. | (2) Fenton Bowls: (1) 9 3/4" Two Flowers ball ftd. and (1) 9 1/2" Cherry Chain 8 Ruffled – Mari. (selling 2 for 1) |
| 367. | 9 3/4" Fenton Holly Flat Plate – Blue (very scarce with nice multi-colored irid.) | 391. | 8" Fenton Stag and Holly spatula ftd. 8 Ruffled Bowl – Mari. |
| 368. | 9 7/8" Fenton Holly Flat Plate – Dk. Mari. (scarce with nice dark color and irid.) | 392. | (2) Fenton Bowls: (1) 9" Peacock and Grape 8 Ruffled and (1) 8 1/2" O.T. with Trunk I.C. Shaped – Mari. (selling 2 for 1) |
| | | 393. | Fenton Blackberry 2 Row Open Edge J.I.P. Hat – Mari. |
| | | 394. | Fenton Sailboats Lg. 6 Ruffled Stemmed Compote – Mari. |
| | | 395. | 7 3/8" Tall Fenton Diamond Rib Squatty Flared Vase – Amyth. |

DONALD DORAIS
150 HIGHLAND AVENUE
CUMBERLAND, RI 02864

BURNS

AUCTION SERVICE



VISIT www.necga.com
CLICK CARNIVAL GLASS LINKS
PAGE for pictures and brochures



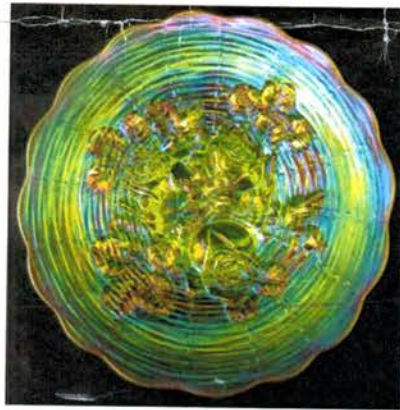
LOT # 35

LEE MARKLEY
BOX 306
MENTONE, IN 46539

4653980306 B004



LOT # 175



LOT # 121



LOT # 230



LOT # 185



LOT # 320



LOT # 186

CARNIVAL GLASS AUCTION SATURDAY, FEBRUARY 2nd AT 9:30 A.M.