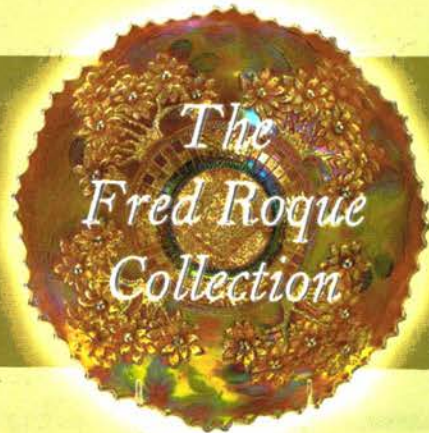


OUTSTANDING Carnival Glass AUCTION



Sat., Nov. 10, 2012 9:30 a.m.

Crowne Plaza Hotel – St. Louis Airport
11228 Lone Eagle Drive
St. Louis, Missouri



Seeck Auctions
Jim & Jan Seeck 641-424-1116

CARNIVAL GLASS AUCTION**Saturday, November 10, 2012 — 9:30 a.m.****Crowne Plaza Hotel – St. Louis Airport****11228 Lone Eagle Drive****St. Louis, Missouri, 63044****The Fred Roque Collection**

Preview: Friday, November 9 at 3 p.m. & Saturday, November 10 at 7 a.m.

Seeck Auctions is pleased to be selling at auction an outstanding selection of Carnival Glass from the Fred Roque Collection of California. Fred has collected for many years and has an eye for wonderful glass. The auction is loaded with fabulous iridescence and rarity. There are many items we have never sold before and this will be one of the best auctions this year. Hope to see you in St. Louis for a fun and exciting Carnival Glass Auction!

For Online Auction Catalog, Check our Website: www.seeckauction.com

Online absentee bidding closes, Friday, November 9 at 6 p.m. CST

jimjan@seeckauction.com

If planning to stay at the hotel, reservations can be made by calling (314)291-6700. Ask for in-house reservations and mention the "Seeck Carnival Glass Auction" to get the special rate of \$89 + tax per night.

NO BUYER'S PREMIUM

AUCTION INFORMATION

Terms: Cash or Check, VISA, MasterCard and Discover accepted w/proper ID. 4% **Clerking Fee** on all purchases except for payment of cash or check. Announcements made day of sale take precedence over any printed information.

ABSENTEE BIDDING: We have 3 options for you

1) **WRITTEN OR PHONE:** If you **DO NOT** have internet access or access to our website, you can: Call us by phone to enter your bids at (641) 424-1116 **OR** By sending the numbers of the item(s) desired and the amount bid on each to: Seeck Auctions, PO Box 377, Mason City, Iowa 50402. (The mail has not been very dependable. We would prefer you call us with your bids rather than send them in a letter.)

☑ All written and called in bids will be entered into the online catalog by us.

☑ **Written and Phone Absentee Deadline:** Have all bids in by **Wednesday, November 7.**

2) **ONLINE CATALOG:** Enter your bids from our website into our online catalog through the Auction Flex system. When you get to the online catalog, you will need to login as a bidder. For the first time you will need to **set up your account** by creating a user name and password. This will include filling out a form with your name, address, etc. You will also need to **register for the auction** which will ask you to enter a valid credit card number. This card will be validated by a \$1 charge to your card. This will only happen once and you will now be able to enter bids through our online catalog by just logging in with your user name and password. You will use this user name and password for all our auctions. You are not required to pay by credit card if you are successful. This is just a safeguard for us if someone does not pay. We will let you know what you owe us through an email and you can decide how you would like to pay us.

☑ **An exciting advantage of entering your bids online yourself,** is the option to be notified by email if you are outbid on an item. You will know when you are outbid on an item and you can increase your bid on that item or bid on something else. **There will be a cutoff date and time for entering your bids online.** After this time has passed, you will not be able to enter your bids from our online catalog.

☑ **Remember,** that just because you are the high bidder in the online catalog, this does not mean you have won the item. Your bid will still need to beat the floor bidders and live phone bidders. This system will run our absentee bids just as we did before. You will still be able to buy the item lower than your online bid unless someone on the floor bids you higher.

3) **LIVE PHONE BIDDING:** Available on pieces with an estimated sale price of \$500 or more. If you would like to participate in live phone bidding, contact us by **the Tuesday before the auction, November 6.** We will need to know the lot# and the phone number that you can be reached at on the day of the auction. We will also need your home phone number if different than the above number. Please call with questions: 641-424-1116.

■ **There is a \$7 handling charge for each successful bid. Shipping and insurance charges are additional.**

bidders will be notified by phone/email if their bid(s) are successful. This will be done 1 - 3 days after the auction.

■ **If you do not receive an item that sold for less than your bid, assume we cancelled your bid because the item had a severe manufacture problem, damage or was not listed correctly.**

BID INCREMENTS: \$1 - \$100/\$5

\$100 - \$200/\$10

\$200 - \$700/\$25

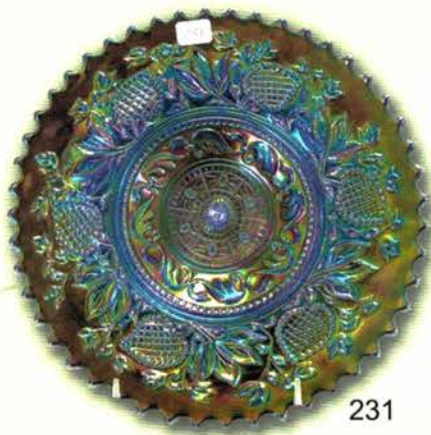
\$700 - \$1,500/\$50

\$1,500 - \$3,000/\$100

\$3,000+ Auctioneer's Discretion

- ___ 1. Amaryllis tri-cornered ftd compote - purple - scarce, nice
- ___ 2. Cosmos & Cane square shaped 4 3/4" bowl - white - pretty, scarce
- ___ 3. Dandelion mug - aqua opal - butterscotch w/super irid.
- ___ 4. **Miniature Blackberry ftd plate - blue - very rare, couple minor nicks on edge of base**
- ___ 5. Wild Rose syrup - marigold - top of cap is loose
- ___ 6. Holly rose bowl - blue - rare shape, nice for these
- ___ 7. Tornado small size vase - purple - pretty, scarce
- ___ 8. Stippled Rays IC shaped compote - pink - super stretchy irid., rare piece
- ___ 9. **Holly ruffled compote - red - scarce & nice**
- ___ 10. **ORANGE TREE W/TRUNK IC SHAPED BOWL Celeste Blue - fantastic Irid., absolutely incredible! Extremely rare, Wow!**
- ___ 11. **Orange Tree IC shaped bowl - red - fantastic irid., as pretty as I've seen these!**
- ___ 12. Orange Tree IC shaped bowl - powder blue - super nice bowl, rare color
- ___ 13. **N'S PEACOCK AT URN MASTER IC BOWL Aqua Opal-Unbelievable quality, beautiful & rare, rare**
- ___ 14. N's Peacock at Urn master IC bowl - purple - very pretty
- ___ 15. N's Peacock at Urn master IC bowl - white - nice
- ___ 16. **N's Peacock at Urn IC sauce - aqua opal - super pretty, matches the big bowl, very rare**
- ___ 17. N's Peacock at Urn IC sauce - ice blue - pretty
- ___ 18. **TREE TRUNK 13" MID-SIZE VASE - Aqua Opal - Butterscotch & super, first one I've ever sold, a beauty!**
- ___ 19. Tree Trunk 13" mid-size vase - green - nice
- ___ 20. **GODDESS OF HARVEST 3 IN 1 EDGE BOWL - Marigold - Super pretty, has nick on base. Again, first time I have ever sold one, pretty cool!**
- ___ 21. **Miniature Blackberry round compote - white - this one looks perfect, nice, rare**
- ___ 22. **N'S PEACOCK AT URN CHOP PLATE - ICE GREEN - One of just a few known, super pretty! A great piece!**
- ___ 23. Imperial Penny match holder - purple - extremely rare & nice
- ___ 24. **POINSETTIA & LATTICE FTD RUFFLED BOWL W/ RIBBED BACK - Aqua Opal - Another extreme rarity, only a few known, nice.**
- ___ 25. Poinsettia & Lattice ftd ruffled bowl w/ribbed back-white - super pretty, frosty, extremely rare
- ___ 26. Poinsettia & Lattice ftd ruffled bowl w/ribbed back- ice blue - super irid. & quite dark
- ___ 27. Poinsettia & Lattice ftd ruffled bowl w/ribbed back- horehound - very pretty, rare color
- ___ 28. Poinsettia & Lattice ftd ruffled bowl w/ribbed back- blue - electric, nice
- ___ 29. Poinsettia & Lattice ftd ruffled bowl w/ribbed back- purple - scarce, nice
- ___ 30. Poinsettia & Lattice ftd ruffled bowl w/ribbed back- marigold - scarce, nice
- ___ 31. **TREE TRUNK ELEPHANT FOOT 13 1/2" FUNERAL VASE -Green - only a handful known, a rare opportunity, some manufacture roughness on ruffle, minor nick on back edge, who cares on this fabulous piece.**
- ___ 32. Question Mark ftd plate- purple - scarce & super nice
- ___ 33. Question Mark ftd plate - white - nice, small flake on top of base
- ___ 34. **GRAPE & CABLE 14 PC. MASTER PUNCH SET - White -very, very rare, frosty & pretty**
- ___ 35. **GRAPE & CABLE 10 PC. MASTER PUNCH SET - Blue - bowl is super, base is nice, has a no harm manufacture spot on the top, rare color**
- ___ 36. Grape & Cable 12 pc. master punch set - purple - collector's favorite, very nice
- ___ 37. Grape & Cable 14 pc. master punch set - marigold - very nice set
- ___ 38. Grape & Cable mid-size punch bowl & base-mari gold scarce, minor rough spot on side of one point
- ___ 39. Grape & Cable small size round shape punch bowl & base - marigold - unusual shape
- ___ 40. **J.N. LEDFORD COMPANY SOUVENIR OF COOLEE MEE N.C./HEART & VINE 9" PLATE - Marigold, super pretty example of this very rare plate, minor pinpoint on point**
- ___ 41. Spector's Department Store Heart & Vine 9" plate - marigold - super mold strike, no straw mark thru center, a dandy
- ___ 42. **ROSE SHOW 9" PLATE - Marigold on Custard - irid. is fantastic, does have chip on edge & chips on roses, super rare**
- ___ 43. **ROSE SHOW 9" PLATE -Lime Green Opal - very rare plate & highly desirable**
- ___ 44. **ROSE SHOW 9" PLATE - Emerald Green - rare, fantastic looking plate!**
- ___ 45. Rose Show 9" plate - Green - rare color, chip on rose
- ___ 46. Rose Show 9" plate - lime green or vaseline - super pretty plate, extremely rare, highly desirable
- ___ 47. Rose Show 9" plate - ice blue - super pretty irid.
- ___ 48. Rose Show 9" plate - marigold - pretty, chip on rose
- ___ 49. Grape & Cable punch cup - aqua opal - extremely rare, has 1/2" heat check from edge down
- ___ 50. **FARMYARD SQUARE SHAPED BOWL - purple - fantastic irid., rare & desirable**
- ___ 51. Inverted Strawberry spittoon- marigold- scarce, very nice
- ___ 52. **PEACOCKS RUFFLED BOWL W/RIBBED BACK - smoke - fantastic example, beautiful & rare, just a few known**
- ___ 53. Peacocks ruffled bowl w/ribbed back - ice blue - very scarce color, nice
- ___ 54. Peacocks ruffled bowl w/ribbed back - ice green - large chip off point
- ___ 55. Peacocks ruffled bowl w/ribbed back - white - scarce color
- ___ 56. Peacocks ruffled bowl w/ribbed back - aqua opal - beautiful example
- ___ 57. Peacocks ruffled bowl w/ribbed back- blue- electric, nice
- ___ 58. Peacocks ruffled bowl w/ribbed back - marigold - pink & yellow irid., nice
- ___ 59. **NUART HOMESTEAD CHOP PLATE -Blue - A super nice example, great mold, pretty irid., blue is rare!**
- ___ 60. Homestead chop plate- emerald green- very rare color & pretty
- ___ 61. Homestead chop plate- amber-a beauty, scarce color
- ___ 62. NUART Homestead chop plate - purple - another super example, beautiful

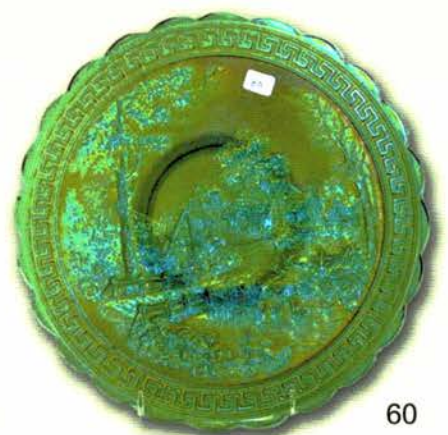
- _____ 63. Sailboats 6" plate - blue - extremely rare color for these, nice, rare little plate!
- _____ 64. POPPY PICKLE DISH - Marigold on Custard - very rare, super, not many opportunities for this
- _____ 65. Poppy pickle dish- aqua opal- super, rare color to find
- _____ 66. KITTENS SPITTOON - Marigold - super rare, highly desirable, a great whimsey!
- _____ 67. Blackberry Spray ruffled hatshape - reverse amberina opal - super example, pretty
- _____ 68. Blackberry Spray ruffled hatshape - aqua opal - rare color, nice
- _____ 69. GOOD LUCK RUFFLED BOWL W/RIBBED BACK Ice Green - extremely rare color, just a few known, highly desirable
- _____ 70. Good Luck ruffled bowl w/ribbed back - ice blue - very rare & super pretty!
- _____ 71. GOOD LUCK RUFFLED BOWL W/RIBBED BACK - Emerald Green - absolutely electric irid., rare!
- _____ 72. Good Luck ruffled bowl w/ribbed back - aqua opal- butterscotch & beautiful, tip of one point has minor nick
- _____ 73. Good Luck ruffled bowl w/ribbed back - sapphire - very rare color, nice
- _____ 74. Good Luck ruffled bowl w/ribbed back - blue - electric & super irid.!
- _____ 75. Peter Rabbit 9" plate - blue - extremely rare, may be the best blue one I've ever sold
- _____ 76. Peter Rabbit 9" plate - green - super example for this rare plate, large polished chip on base
- _____ 77. Peacock & Dahlia 7" plate- marigold- very rare 7" plate, nice
- _____ 78. GREEK KEY 9" PLATE W/RIBBED BACK - Blue - electric & super, extremely rare plate in blue
- _____ 79. Greek Key 9" plate w//ribbed back - marigold - tons of pink & yellow irid., super piece
- _____ 80. Miniature Twigs 3 3/4" crimped edge vase - purple - super nice example
- _____ 81. ORANGE TREE W/TRUNK 9" PLATE - Green - super pretty & extremely rare color
- _____ 82. ORANGE TREE W/TRUNK 9" PLATE -Amethyst- another extremely rare plate & pretty
- _____ 83. Orange Tree 9" plate - blue - electric, super
- _____ 84. Orange Tree w/trunk 9" plate - marigold - dark, nice
- _____ 85. FOUR SEVENTY FOUR 14 PC. PUNCH SET - Emerald Green - extremely rare set, a great opportunity to buy a beautiful punch set
- _____ 86. Drapery rose bowl - ice blue - rare color, nice
- _____ 87. Drapery rose bowl - blue - scarce, nice
- _____ 88. TREE TRUNK 19" FUNERAL VASE - Blue - electric & super pretty, rare
- _____ 89. Dugan's Heavy Grape lg ruffled bowl - purple - scarce, nice
- _____ 90. Dugan's Heavy Grape ruffled sauce - purple - super irid., maybe rarer than the big bowl
- _____ 91. Dragon & Lotus ruffled bowl - aqua opal - super nice example of this rare bowl
- _____ 92. Dragon & Lotus ruffled bowl - cherry red - nick filled w/epoxy on edge
- _____ 93. Dragon & Lotus ruffled bowl- brick red- pretty irid.
- _____ 94. Stippled Strawberry 9" plate w/ribbed back - green absolutely super, beautiful!
- _____ 95. Stippled Strawberry 9" plate w/ribbed back - mari gold scarce plate, chip on back of point filled w/epoxy
- _____ 96. Horse Medallion rose bowl - aqua - rare rose bowl, nice
- _____ 97. N'S TOWN PUMP -Green - super pretty example of this rare novelty
- _____ 98. N's Town Pump - marigold - dark, nice, rare
- _____ 99. N's Town Pump - purple - scarce, nice
- _____ 100. THISTLE 9" PLATE - Green - fantastic example, rare & beautiful
- _____ 101. Thistle 9" plate - marigold - also a rare & beautiful plate
- _____ 102. Thistle 9" plate - amethyst - rare, pretty
- _____ 103. Horse Medallion ftd round bowl - red - rare color, a sharp point has been slightly polished off
- _____ 104. Stippled Grape & Cable PCE bowl w/ribbed back - aqua opal- a fantastic bowl that is pastel & beautiful
- _____ 105. Stippled Grape & Cable Variant PCE bowl w/ribbed back - aqua opal - butterscotch, beautiful & rare
- _____ 106. Stippled Grape & Cable PCE bowl w/ribbed back - ice blue - pretty irid., very scarce
- _____ 107. Stippled Grape & Cable Variant PCE bowl w/ribbed back blue - electric, nice
- _____ 108. DRAGON & LOTUS 9" PLATE - Blue - super rare & super pretty, a top Fenton plate
- _____ 109. DRAGON & LOTUS 9" PLATE - Marigold - also super rare, fantastic, beautiful marigold irid.
- _____ 110. Pony ruffled bowl - ice green - chip on edge
- _____ 111. Poppy Show 9" plate - green - some may call this emerald, extremely beautiful irid., chip on outside edge of poppy
- _____ 112. Poppy Show 9" plate - ice green - rare w/very pretty irid.
- _____ 113. Poppy Show 9" plate - ice blue - super nice, scarce
- _____ 114. Poppy Show 9" plate - blue - a show stopper, FANTASTIC from across the room!
- _____ 115. Poppy Show 9" plate - purple - quite a rare color plus pretty
- _____ 116. Poppy Show 9" plate - pastel marigold - fabulous multi-colored pastel irid.
- _____ 117. Poppy Show 9" plate - white - nice, one edge is slightly pulled up
- _____ 118. Blackberry Open Edge 8" plate - white - extremely rare plate & very nice, another WOW
- _____ 119. Blackberry Open Edge 8" plate - blue - this is a pretty one
- _____ 120. Blackberry Open Edge 8" plate - marigold - scarce & super nice
- _____ 121. Fishnet & Grape 6" vase - red - extremely rare, nice
- _____ 122. Fishnet & Lotus 6" vase - red - rare & very pretty
- _____ 123. Fishnet & Poppy 6" vase - red - rare & nice
- _____ 124. STIPPLED THREE FRUITS RUFFLED BOWL W/RIBBED BACK -Ice Blue - extremely rare w/ fantastic irid., a beauty
- _____ 125. Stippled Three Fruits ruffled bowl w/ribbed back aqua opal - fantastic irid., w/lots of great opal
- _____ 126. Stippled Three Fruits ruffled bowl w/ribbed back - blue electric irid., chip on base
- _____ 127. Rustic 22 1/2" funeral vase w/plunger base - amethyst - very rare & nice
- _____ 128. Peacocks 9" plate w/ribbed back - ice blue - super example, very rare
- _____ 129. Peacocks 9" plate w/ribbed back - green - scarce color, pretty, has a few light dye runs
- _____ 130. Peacocks 9" plate w/ribbed back - lavender - scarce color & nice



231



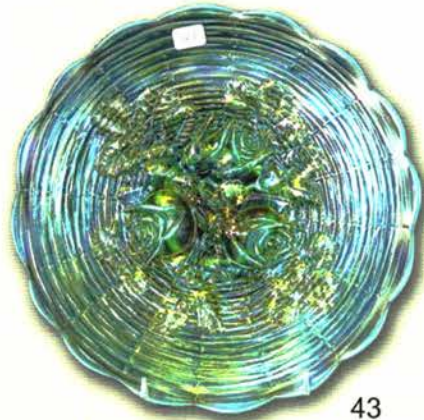
25



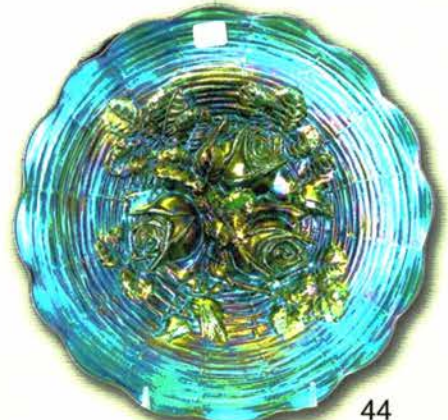
60



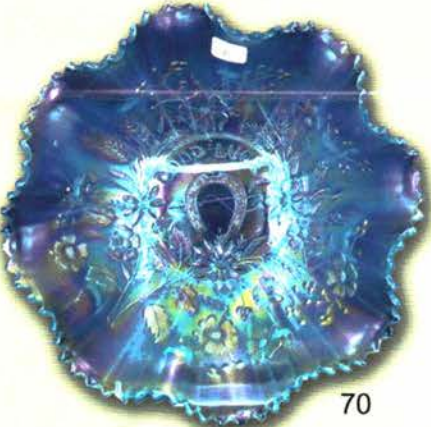
42



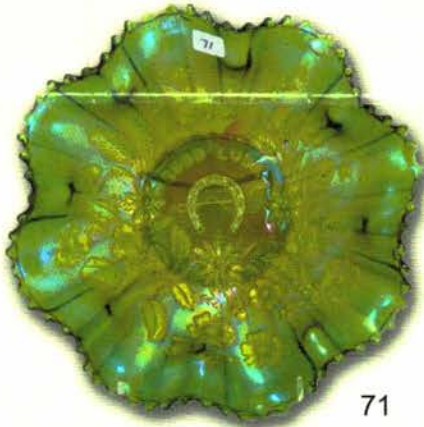
43



44



70



71



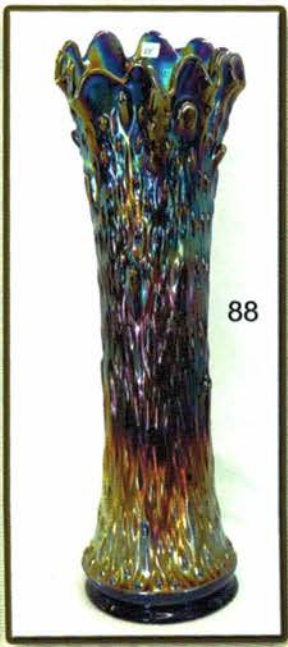
75



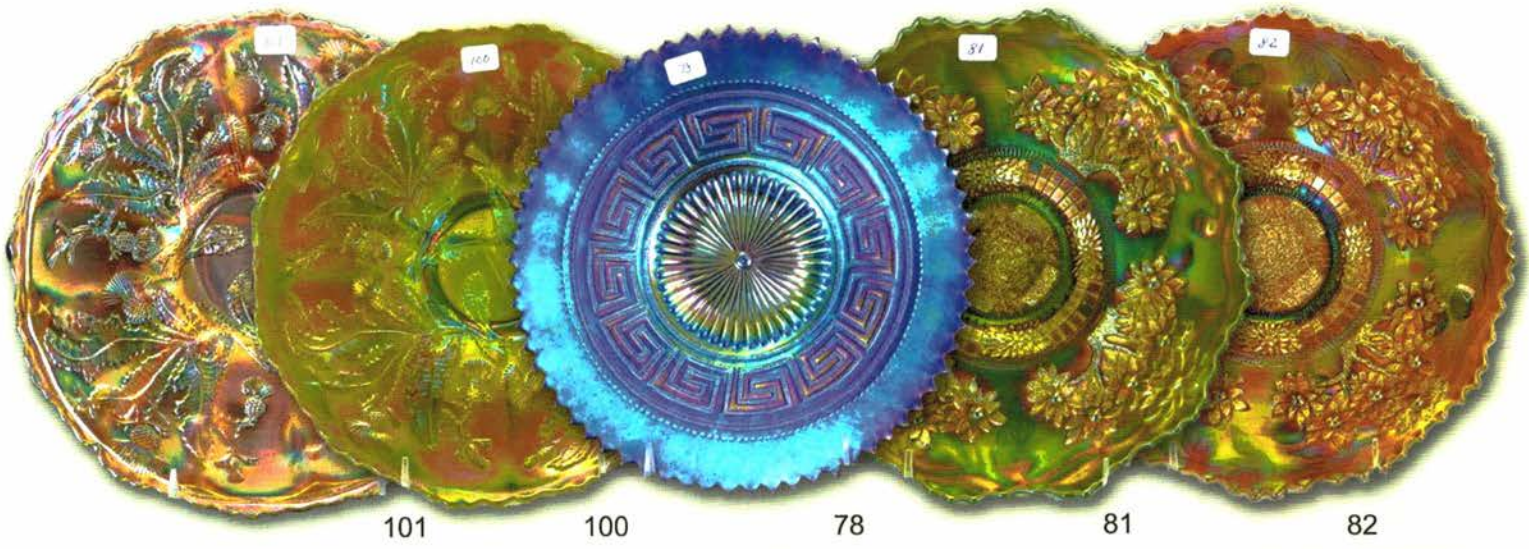
163



35



88



101

100

78

81

82



324



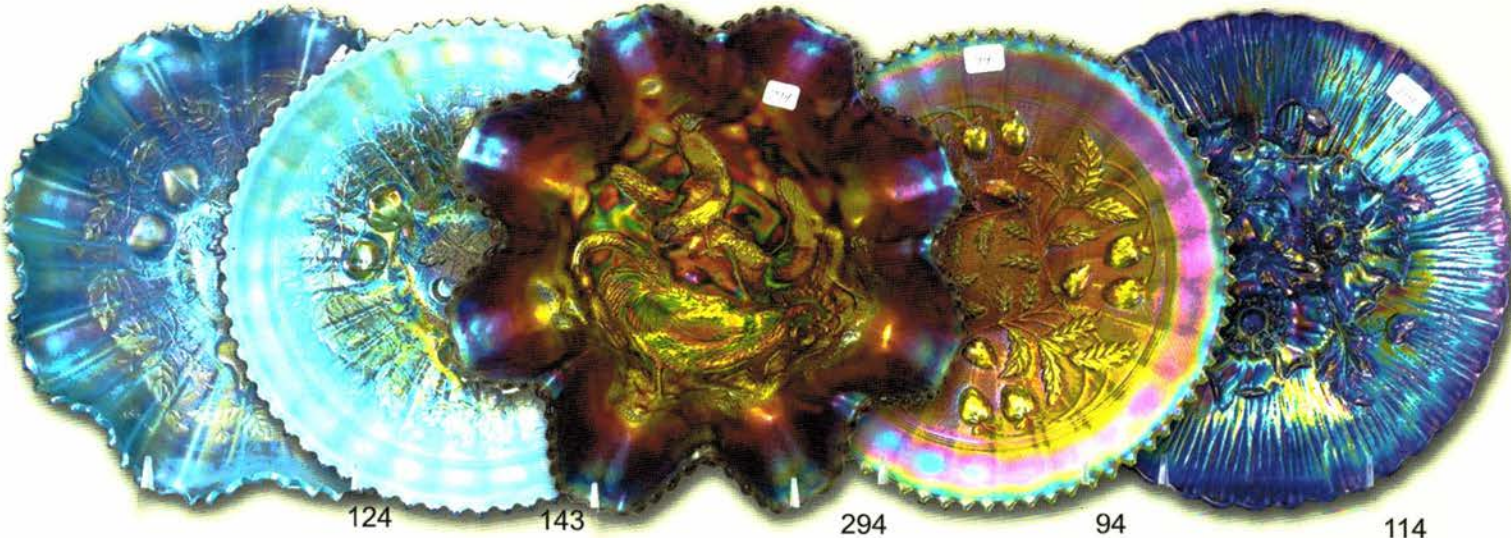
66



220



64



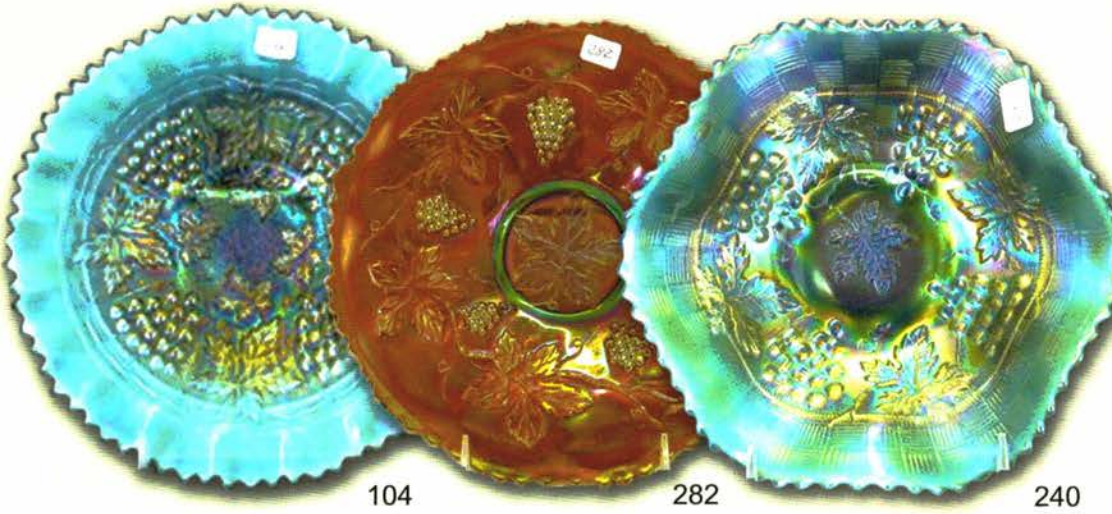
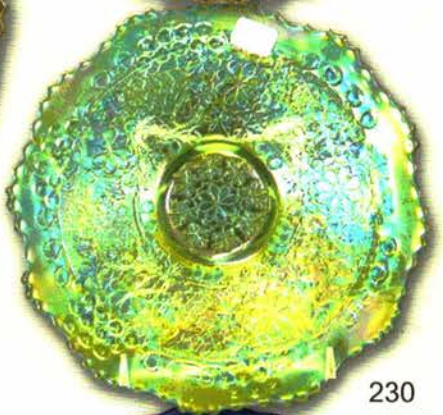
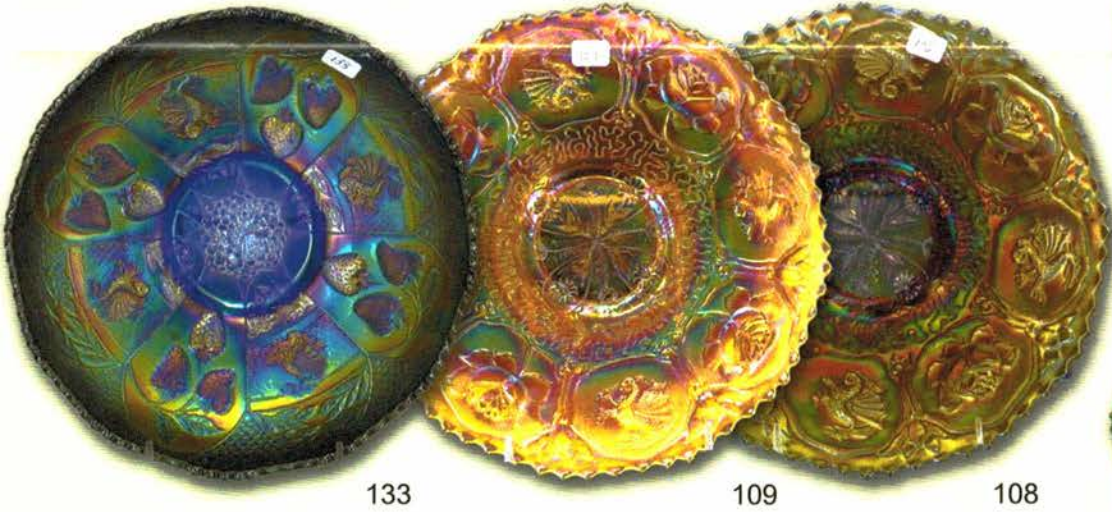
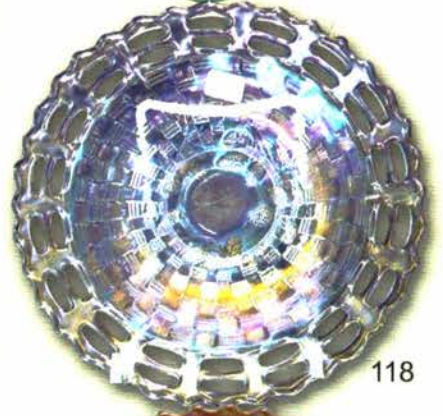
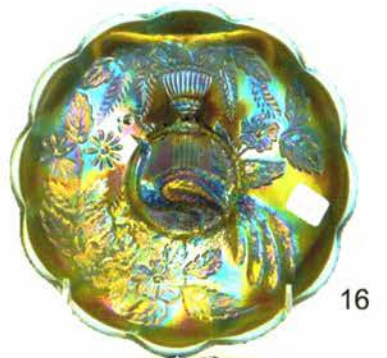
124

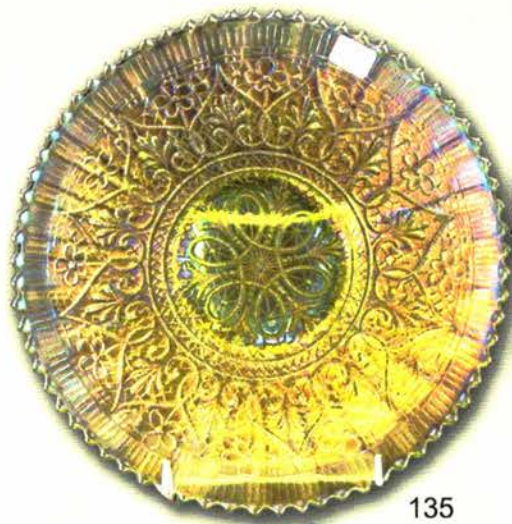
143

294

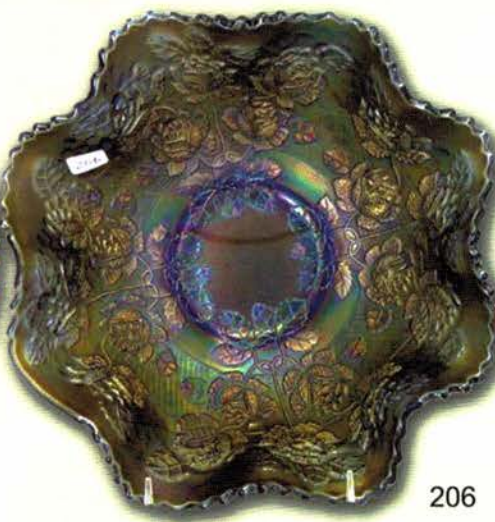
94

114

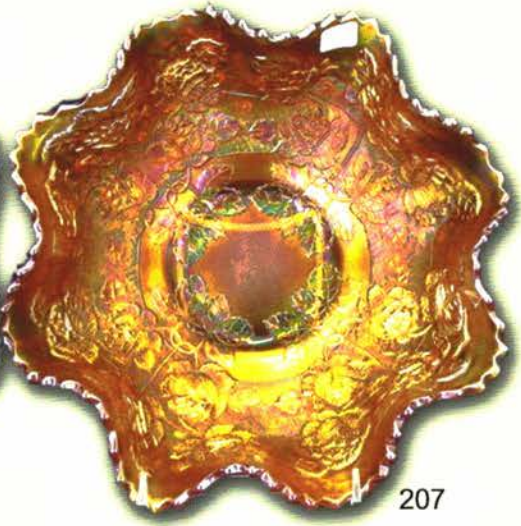




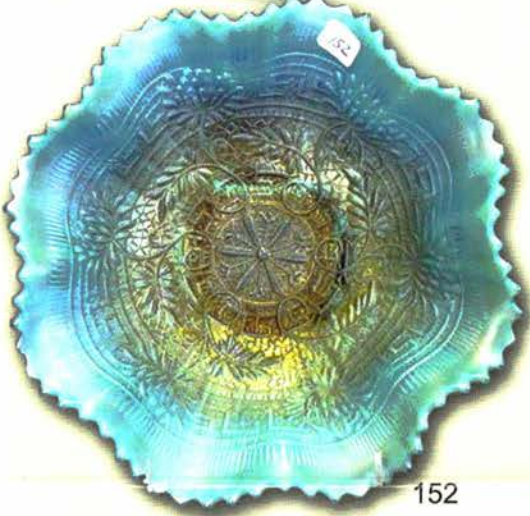
135



206



207



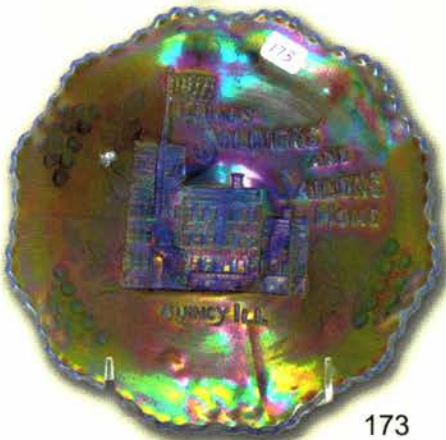
152



85



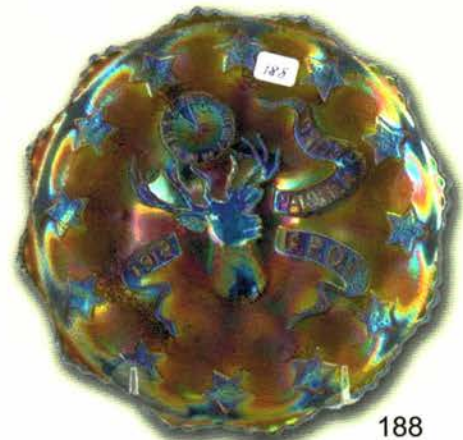
211



173



175



188

- _____ 131. Peacocks 9" plate w/ribbed back - blue - electric, nice, chip on point
- _____ 132. Peacocks 9" plate w/BW back - white - super irid., rare w/BW back
- _____ **133. Dragon & Strawberry IC shaped bowl - blue - super pretty electric irid., rare**
- _____ 134. Heavy Grape chop plate - amber - a beauty, scarce
- _____ 135. **HEARTS & FLOWERS 9" PLATE w/ribbed back Lime Green - pretty, rare Northwood plate**
- _____ 136. **Hearts & Flowers 9" plate w/ribbed back - white - super example, rare**
- _____ 137. **Hearts & Flowers 9" plate w/ribbed back- purple- scarce, nice**
- _____ 138. Hearts & Flowers 9" plate w/ribbed back - marigold - scarce, nice
- _____ 139. **Persian Medallion 7 1/2" plate - green - extremely rare plate especially in this color, nice!**
- _____ 140. **Persian Medallion 6" plate - green - another very rare 6" plate, pretty**
- _____ 141. **Persian Garden 11" IC shaped bowl- purple- super beautiful, minor manufacture mold roughness on base**
- _____ 142. **Fenton's Peacock at Urn ruffled bowl - marigold on moonstone - extremely rare bowl & beautiful**
- _____ 143. **Stippled Three Fruits 9" plate w/ribbed back - aqua opal - pastel & gorgeous, super opal**
- _____ 144. **Stippled Three Fruits 9" plate w/ribbed back - sapphire - super for these, rare color**
- _____ 145. **Stippled Three Fruits 9" plate w/ribbed back - blue - FANTASTIC!**
- _____ 146. **Stippled Three Fruits 9" plate w/ribbed back - marigold super pretty, sharp point**
- _____ 147. **Mikado ruffled compote - green - has fantastic emerald irid., hard to find in green, chip on flat of base**
- _____ 148. **Amaryllis ftd plate - marigold - lots of pink irid.**
- _____ 149. **Peacock & Grape 9" plate - blue - a screamer, rare color**
- _____ 150. **Peacock & Grape 9" plate - marigold - has stretchy irid., beautiful**
- _____ 151. **Pansy dresser tray - purple - Imperial at its best!**
- _____ 152. **Embroidered Mums ruffled bowl w/ribbed back - aqua opal - very rare bowl, lots of opal**
- _____ 153. **Embroidered Mums ruffled bowl- amethyst- a pretty one**
- _____ 154. **Christmas compote - marigold - extremely rare, has 1" heat check in base**
- _____ 155. **N's Peacock at Urn IC sauce - aqua opal - super pretty, will match the big bowl**
- _____ 156. **Wishbone ftd ruffled bowl - ice green - rare color, point chipped off**
- _____ 157. **Wishbone ftd ruffled bowl - ice blue - scarce, nice**
- _____ 158. **Wishbone ftd ruffled bowl - white - nice**
- _____ 159. **Wishbone ftd ruffled bowl - blue - fantastic! from the Morgan collection**
- _____ 160. **Captive Rose 9" plate - green - a beauty, scarce**
- _____ 161. **Captive Rose 9" plate - amethyst - also very hard to find & pretty**
- _____ 162. **Captive Rose 9" plate - blue - nice**
- _____ 163. **Diamond & Rib 18" funeral vase - amethyst - very scarce vase, nice**
- _____ 164. **Leaf & Beads flared out nut dish - white - super pretty, quite unique**
- _____ 165. **Dragon & Strawberry ftd ruffled bowl - green - very rare bowl, nice**
- _____ 166. **Nippon PCE bowl w/ribbed back - aqua - rare color, nice**
- _____ 167. **Imperial Grape 9" plate - purple - fabulous, mold strike is great, color is great, can't get much better**
- _____ 168. **Butterfly & Berry ftd master berry bowl - white- one of two or three that I know of, very pretty**
- _____ 169. **Butterfly & Berry ftd master berry bowl - amethyst - scarce color, minor nick on toe**
- _____ 170. **Stippled Grape & Cable Variant 9" plate w/ribbed back - blue - electric & super, does have no harm pinpoint on base**
- _____ 171. **Stippled Grape & Cable 9" plate w/ribbed back - green - super pretty, some may call this emerald, large chip on point**
- _____ 172. **Stippled Grape & Cable Variant 9" plate w/ribbed back - marigold - super pretty w/lots of yellow & pink irid.**
- _____ 173. **Illinois Soldiers & Sailors 7" plate - blue - super pretty example, scarce & desirable**
- _____ 174. **1911 Birmingham Age Herald IC shaped bowl - amethyst - very rare, as nice as they get**
- _____ 175. **Norris N. Smith Real Estate and Insurance Rome, GA advertising 6" plate - amethyst - rare plate, nice w/pretty irid.**
- _____ 176. **Ogden Furniture and Carpet Co. Ogden Utah advertising 6" plate - amethyst - rare plate, nice**
- _____ 177. **Ogden Furniture and Carpet Co. Ogden Utah advertising ruffled bowl - amethyst - rare, pretty**
- _____ 178. **Geo. W. Getts Pianos Grand Forks, ND advertising 6" plate - amethyst - rare, nice**
- _____ 179. **Lewis 66 Rye Utah Liquors Co. Phones 473 2223 S. Main St. advertising 6" plate - amethyst - pretty**
- _____ 180. **E.A. Hudson Furniture Co. 711 Travis St. advertising 6" plate - amethyst - epoxy on base**
- _____ 181. **Exchange Bank Glendive Mont. advertising 6" plate -amethyst - rare plate**
- _____ 182. **Dreibus Parfait Sweets advertising 6" plate - amethyst - super irid., base has polished chip**
- _____ 183. **Season's Greetings Eat Paradise Sodas advertising 6" plate - amethyst - nice**
- _____ 184. **Gevurtz Bros Furniture & Clothing Union Ave. & East Burnside St. advertising 6" plate - amethyst - pretty, scarce**
- _____ 185. **Gevurtz Bros Furniture & Clothing Union Ave. & East Burnside St. advertising handgrip plate - amethyst - pretty, roughness on outside edge**
- _____ 186. **Sterling Furniture Co. 1049 Market St. San Francisco Cal. advertising handgrip plate - amethyst - scarce, nice**
- _____ 187. **Ballard Merced, Cal. advertising ruffled bowl - amethyst - three points chipped**
- _____ 188. **1914 Parkersburg Elks 8" plate - blue - super pretty, super scarce**
- _____ 189. **Panther ftd ruffled sauce - red - cherry red color & very nice**
- _____ 190. **Nippon 9" plate w/BW back - green - super pretty plate, rare**
- _____ 191. **Nippon 9" plate w/BW back- purple- rare color, nice**
- _____ 192. **Nippon 9" plate w/BW back - marigold - rare color for these, nice**
- _____ 193. **Cosmos & Cane large rose bowl - honey amber rare rose bowl, highly desirable, not many around**
- _____ 194. **Stippled Good Luck 9" plate w/ribbed back - marigold - super pink & yellow irid.**
- _____ 195. **Good Luck 9" plate w/BW back - purple - scarce, nice**
- _____ 196. **Leaf Chain 9" plate-green-has beautiful emerald irid., rare plate, especially rare when they look like this!**

- _____ 197. Leaf Chain 9" plate - amethyst - another dandy, super pretty for this color, rare
- _____ 198. Leaf Chain 9" plate - marigold - nice
- _____ 199. Fenton's Grape & Cable fruit bowl - ice green - has Persian Medallion interior, extremely rare, one of just a couple known, minor heat check in base
- _____ 200. Good Luck PCE bowl w/ribbed back- blue- electric, nice
- _____ 201. Peacock at the Fountain ruffled compote- aqua opal super pretty example, two nicks around base, minor manufacture separation on top edge, rare
- _____ 202. Peacock at the Fountain ruffled compote - blue - electric & beautiful
- _____ 203. Chrysanthemum chop plate - smokey amber - unusual color, has stretchy irid.
- _____ 204. Grape & Cable lg size fruit bowl w/Blackberry interior - blue - extremely rare to find this version, has a 3" crack from edge down
- _____ 205. Crucifix candlesticks - marigold - super nice matching pair, scarce
- _____ 206. ROSE TREE RUFFLED BOWL - Blue - super rare & super pretty, minor polishing on a couple of points
- _____ 207. ROSE TREE RUFFLED BOWL - Marigold - dark & super beautiful, rare
- _____ 208. Lovely ftd round nut bowl - purple - rare pattern
- _____ 209. Embroidered Mums 9" plate w/ribbed back - ice green - very pretty example of this scarce plate
- _____ 210. Round Up 9" plate - purple - super pretty
- _____ 211. Horse Medallion 7" plate - amethyst - very rare color, highly desirable
- _____ 212. Horse Medallion 7" plate - blue - large chip off back edge of plate
- _____ 213. Horse Medallion 7" plate - powder blue - super pretty example, rare
- _____ 214. Floral & Optic ftd chop plate - red - super stretchy irid., very minor pinpoint on one foot
- _____ 215. Rose Show ruffled bowl - lime green opal - rare bowl & beautiful, has epoxy on collar base
- _____ 216. Rose Show ruffled bowl - aqua opal - pastel, super
- _____ 217. IMPERIAL GRAPE 6" PLATE - Blue - extremely rare in this color, fantastic piece!
- _____ 218. Hearts & Flowers ruffled bowl w/ribbed back - ice green very pretty, pinpoint on point
- _____ 219. Hearts & Flowers ruffled bowl w/ribbed back - purple- super, scarce
- _____ 220. Diamond Rib jardinière - marigold - extremely rare, very nice
- _____ 221. Grape & Cable spt ftd ruffled bowl - ice green - rare in this shape, nice
- _____ 222. Concord 9" plate - green - very rare Fenton plate
- _____ 223. Concord 9" plate - amethyst - scarce, very nice
- _____ 224. Concord 9" plate - marigold - super pretty, has repaired chip on edge
- _____ 225. Peacocks PCE bowl w/ribbed back - green - scarce, very pretty
- _____ 226. Starflower water pitcher - blue - rare pitcher, highly desirable, minor pinpoint on lip
- _____ 227. Wishbone 9" ftd plate - green - extremely rare plate, not many around, nice
- _____ 228. Wishbone 9" ftd plate - marigold - dark & super
- _____ 229. Wishbone 9" ftd plate - purple - fantastic
- _____ 230. LEAF CHAIN 7 1/2" PLATE- Ice Green- super rare little plate, few known, has fantastic irid.
- _____ 231. Fanciful 9" plate - blue - a killer plate!
- _____ 232. Fanciful 9" plate - purple - super pretty, scarce
- _____ 233. Fanciful 9" plate - peach opal - pretty
- _____ 234. Scroll Embossed 9" plate - purple - pretty
- _____ 235. Strawberry 9" plate w/BW back - peach opal - has light opal in tips, rare
- _____ 236. Heart & Vine 9" plate - blue - super pretty plate w/stretchy irid.
- _____ 237. N's Thin Rib 13" mid-size vase - aqua opal - super example for these, butterscotch, beautiful
- _____ 238. N's Thin Rib 12 1/2" mid-size vase - lime green - scarce color, pretty, heat check in base
- _____ 239. Chrysanthemum lg size IC shaped ftd bowl - white - extremely rare, can't remember another, light irid.
- _____ 240. GRAPE & CABLE 7" RUFFLED BOWL w/BW Back Aqua Opal - very, very, very rare little bowl & super!
- _____ 241. Nippon ruffled bowl w/ribbed back - ice green - scarce, very nice
- _____ 242. Nippon ruffled bowl w/ribbed back - blue - rare color for these, has electric highlights
- _____ 243. Nippon ruffled bowl w/ribbed back - ice blue - harder to find than the PCE edge, nice
- _____ 244. Wishbone & Spades chop plate - purple - super pretty, very rare chop plate
- _____ 245. Shell & Sand 9" plate - purple - very scarce, point chip
- _____ 246. Shell & Sand 9" plate - smoke - very rare plate, nice
- _____ 247. Heavy Webb lg square shaped bowl - peach opal - super pretty example, rare whimsical type piece
- _____ 248. Stippled Three Fruits Medallion spt ftd ruffled bowl - ice blue - along two ruffles points have been smooshed, pretty
- _____ 249. Stippled Three Fruits Medallion spt ftd ruffled bowl - aqua opal - large chip on edge
- _____ 250. Stippled Three Fruits Medallion spt ftd ruffled bowl - white - scarce
- _____ 251. Octagon 7 pc. wine set - purple - fantastic set! wines are super, bottle is super & stopper is super
- _____ 252. Lions 7" plate - marigold - rare plate, nice
- _____ 253. Hattie chop plate- amber- rare plate w/fabulous irid.
- _____ 254. Hattie chop plate - marigold - slight buffing on two points, pretty!
- _____ 255. Hearts & Flowers ruffled compote - green - very pretty example of this rare colored compote
- _____ 256. Hearts & Flowers ruffled compote - blue - electric, nice
- _____ 257. Hearts & Flowers ruffled compote - aqua opal - tiny pinpoint on base, pretty
- _____ 258. Rustic 19 1/2" funeral vase - marigold - dark, nice, even from top to bottom
- _____ 259. Peacock at the Fountain ftd fruit bowl - blue - scarce color, pretty
- _____ 260. Peacock at the Fountain ftd fruit bowl - purple - scarce, nice
- _____ 261. Holly 3 in 1 edge bowl - marigold on moonstone - very rare, only a few known, nice
- _____ 262. Tree Trunk 10" vase - aqua opal - butterscotch, very nice, rare & desirable
- _____ 263. Panther ftd centerpiece bowl - marigold - dark & super, a real beauty!
- _____ 264. Fine Cut & Roses rose bowl- aqua opal- very pretty example, slight polishing on one foot, very typical
- _____ 265. Stippled Grape & Cable Variant ruffled bowl w/ribbed back - aqua - fabulous irid. on a rare bowl, has 3" crack in side of bowl by base
- _____ 266. Stippled Grape & Cable ruffled bowl w/ribbed back green - super pretty

- _____ 267. Stippled Grape & Cable Variant ruffled bowl w/
ribbed back - marigold - lots of pink irid., beautiful
- _____ 268. Strawberry 2 hddd bonbon - lime green opal - lots of
opal, nice, scarce
- _____ 269. Persian Medallion 9" plate- white- very rare late & nice
- _____ 270. Persian Medallion 9" plate - marigold - very scarce
plate, nice
- _____ 271. Stippled Peacocks PCE bowl w/ribbed back - blue -
electric, super
- _____ 272. Thumbprint & Ovals vase- purple- super pretty one!
- _____ 273. Stippled Peacocks 9" plate w/ribbed back -
renninger blue - super pretty irid., slightly
stretchy, as nice as these get
- _____ 274. Stippled Peacocks 9" plate w/ribbed back - purple
may be the best one I've sold
- _____ 275. Fenton's Grape & Cable ftd ruffled bowl - celeste
blue - super stretchy w/beautiful irid.
- _____ 276. Wishbone 10" PCE bowl - blue - electric, fantastic,
scarce
- _____ 277. Wishbone 10" PCE bowl - purple - super pretty
- _____ 278. Butterfly & Berry hatpin holder - marigold - very
nice example, small nick on claw foot
- _____ 279. Fruits & Flowers 7" ruffled bowl w/BW back - ice
blue - rare color for these plus super!!
- _____ 280. Fruits & Flowers 7" ruffled bowl w/BW back -
ice green- pinpoint on point, scarce
- _____ 281. Fruits & Flowers 7" ruffled bowl w/BW back - blue -
electric, super
- _____ 282. Vintage 9" plate - amethyst - gorgeous Fenton plate,
this is one you've got to like! RARE, RARE
- _____ 283. Embroidered Mums bonbon - white - very scarce, nice
- _____ 284. Open Rose 9" plate - purple - super pretty example,
scarce
- _____ 285. Wishbone epergne - green - minor nick on base
- _____ 286. Stag & Holly giant rose bowl - blue - very rare, can't
imagine a prettier one
- _____ 287. Lotus & Grape 9" plate - amethyst - rare plate, large
repaired chip on back edge
- _____ 288. Lotus & Grape 9" plate - blue - rare plate, nice
- _____ 289. N's Corn vase w/stalk base - ice blue - very rare
corn vase plus nice example
- _____ 290. Holly 9" plate - green - nice
- _____ 291. N's Stippled Rays large deep ruffled bowl - ice blue-
one of just a couple known, super pretty, from the
Patterson collection
- _____ 292. N's Stippled Rays large deep ruffled bowl - blue -
electric irid.,
- _____ 293. Persian Garden chop plate - white - super pretty &
very rare, minor nick on back edge of point
- _____ 294. Farmyard 8 ruffled bowl - purple - highly
desirable, nice
- _____ 295. Grape & Cable small size fruit bowl - ice green -
scarce color, pretty example
- _____ 296. Stippled Strawberry PCE bowl w/ribbed back - purple-
scarce, nice
- _____ 297. N's Grape Leaves ruffled bowl - ice blue - rare color,
very pretty
- _____ 298. Good Luck ruffled bowl w/BW back - green
- _____ 299. Vintage 7" ruffled bowl - red - very rare piece of red,
has been a long time since selling one, super nice
- _____ 300. Orange Tree 3 in 1 edge bowl - green - rare color, sharp
point
- _____ 301. Rose Show Variant 9" plate - renninger blue - rare
plate, point chipped
- _____ 302. Apple Blossom Twigs 9" plate w/smooth edge -
purple scarce
- _____ 303. Hearts & Flowers PCE bowl w/ribbed back - blue -
very scarce, nice
- _____ 304. Hearts & Flowers PCE bowl w/ribbed back -
marigold - scarce, nice
- _____ 305. Persian Garden 6" plate - purple - incredible, out of
the Morgan collection, here ya go!
- _____ 306. Raspberry milk pitcher - white - very pretty, scarce
- _____ 307. Shell 9" plate - smoke - scarce, pretty, pinpoint on
back of point
- _____ 308. Poppy Show ruffled bowl - purple - very pretty bowl,
spot of epoxy on base
- _____ 309. Poppy Show ruffled bowl - marigold - pretty, scarce
- _____ 310. Fenton's Peacock at Urn 9" plate- blue - super pretty
- _____ 311. Singing Birds mug - aqua opal - great opal on
this scarce mug
- _____ 312. Stag & Holly ftd chop plate - marigold - scarce, nice
- _____ 313. Stippled Peacocks ruffled bowl w/ribbed back -
purple - rare to be stippled in this color
- _____ 314. Dragon & Strawberry ruffled bowl - marigold -
epoxy on base
- _____ 315. Peacock at the Fountain water pitcher - green -
tough color, nice
- _____ 316. Peacock at the Fountain tumbler - emerald green -
fabulous
- _____ 317. Heavy Pineapple lg ftd ruffled fruit bowl - marigold-
very rare pattern, nice!
- _____ 318. Graceful 5 1/2" ruffled vase - ice blue - only one I
know of, from the Patterson collection, SUPER!
- _____ 319. Coral ruffled bowl - green
- _____ 320. Stippled Grape & Cable Variant 9" plate - purple - has
stippling all the way to edge of plate, rare version,
super pretty
- _____ 321. Thin Panels 20" funeral vase - red - non iridized, has
chip on base
- _____ 322. Stippled Three Fruits PCE bowl w/ribbed back -
marigold - scarce, nice
- _____ 323. Waterlily ftd ruffled sauce - reverse amberina opal -
very rare color, nice
- _____ 324. Diamond Points bushel basket - marigold -
very rare basket, nice
- _____ 325. Fenton's Grape & Cable 8" flat plate - marigold -
extremely rare, can't be many out there
- _____ 326. Tree Trunk 6 3/4" squatty vase - ice green -
super pretty, scarce
- _____ 327. Cherry Chain 6" plate - green - fantastic & extremely
rare, if Fenton had emerald green, this would be it!
- _____ 328. Peacock at the Fountain master berry bowl - lavender -
scarce, nice
- _____ 329. Greek Key 9" plate w/ribbed back - marigold -
super pretty, very rare
- _____ 330. Greek Key 9" plate w/BW back - green - scarce, nice
- _____ 331. Stippled Good Luck 9" plate w/ribbed back -
marigold - dark, super, a beauty
- _____ 332. Stippled Strawberry 9" plate w/BW back - green -
scarce, nice
- _____ 333. Poppy Show 9" plate - blue - electric, SUPER!
- _____ 334. Peacocks 9" plate w/ribbed back - blue - has
electric highlights
- _____ 335. Fenton's Peacock at Urn ruffled bowl - Persian Blue -
very rare bowl, has small chip in pattern, super piece!
- _____ 336. Rose Show 9" plate - lime green or vaseline -
extremely rare plate, yes, there is two in the
auction, super nice - you get two chances!
- _____ 337. N's Peacock at Urn IC sauce - aqua opal - another
super pretty example, all are great in this auction
- _____ 338. Sailboats ruffled sauce - red - large chip on base

Seeck Auctions
PO Box 377
Mason City, Iowa
50402

Presorted
First Class Mail
U.S. Postage
Paid
Mail Expeditors

CARNIVAL GLASS
AUCTION
Sat., Nov. 10, 2012
9:30 a.m.
Crowne Plaza —
St. Louis Airport Hotel

T5 P1 66
LEE MARKLEY
BOX 306
MENTONE IN 46539-0306



52

59

31

24

40

50

34

