

BURNS

AUCTION SERVICE

**2012 GREAT LAKES
CARNIVAL GLASS CLUB
CONVENTION & AUCTION
SATURDAY, NOVEMBER 3rd
10:00 A.M.**



Lot # 10

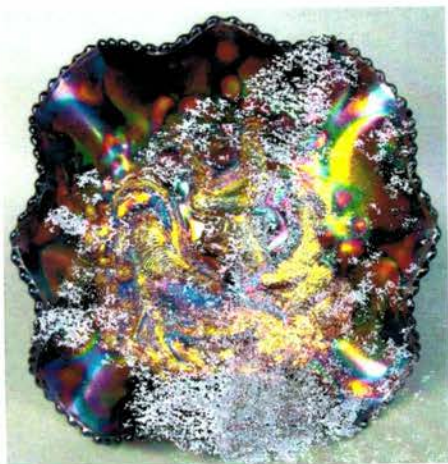


Lot # 25

**Preview:
Friday evening after the banquet
Saturday at 8:00 a.m.**

**RAMADA PLAZA HOTEL & CONFERENCE CENTER
7501 W Saginaw Hwy., Lansing, MI 48917
(517) 627-3211**

For more information, call/write Tom Burns
183 Sunnyside Drive, Clermont, FL 34711
(407) 592-6552



Lot # 150



Lot # 50



Lot # 5

We are winding down 2012 with a great selection of glass to be sold at the Great Lakes Carnival Glass Convention. This year we are working in conjunction with Debra Remmen of Remmen Auction Service. Together we hope you enjoy this year's auction..

1. All terms and conditions as previous auctions.
2. **This auction will be on auction flex.**
3. All mail and auction flex bids are due by 11:59 p.m. Friday, November 2nd.
4. For further information, call **Tom Burns at (407) 592-6552** or Debra Remmen at (503) 756-2629.
5. All photos and listings can be viewed at www.necga.com. Click on Carnival Glass Links Page and Look for Burns Auction.
6. For further information on the convention, call Max Burkhardt at (517) 627-7558.

- | | |
|--|---|
| <p>___ 1. Golden Wedding 1/10 Pint "Nip" Bottle with Screw Cap – Mari. (scarce)</p> <p>___ 2. "Shinola Dressing For Children's Shoes" Shoe Polish Bottle – Clear Irid. (scarce; unusual)</p> <p>___ 3. 4 ¾" Tall Signed Heisey Colonial Flute Stemmed Wine Glass – Lt. Mari. (etched "Louis Banderob - Superior Bath House, Hot Springs, Ark.")</p> <p>___ 4. 9 ¼" Tall Signed Heisey Ribbed Cathedral Covered ½ lb. Candy Jar – Lt. Mari. (scarce)</p> <p>___ 5. M'BURG UNLETTERED COURT HOUSE BOWL WITH 3 IN 1 EDGE – LAVENDER (EXTREMELY RARE ITEM; GREAT COLOR AND RADIUM IRID.)</p> <p>___ 6. 9 7/8" M'BURG PEACOCK AT THE URN LARGE ICE CREAM BOWL – AMYTH. (RADIUM AND RARE; HAS BEE BUT NO BEADING; NICE)</p> <p>___ 7. 10" M'burg Peacock at the Urn Large Ice Cream Bowl – Mari. (satiny; has bee but no beading; nice)</p> <p>___ 8. 10" M'burg Peacock at the Urn Large 6 Ruffled Bowl – Amyth. (satiny finish; has bee but no beading)</p> <p>___ 9. 9 ½" M'burg Peacocks Deep Round Flared Master Berry Bowl – Mari. (radium and really nice – sorta pastel)</p> <p>___ 10. M'BURG BUTTERFLY AND CORN VASE – MARI. (EXTREMELY RARE AND VERY DESIRABLE ITEM NOT OFTEN OFFERED FOR SALE)</p> <p>___ 11. 9 ½" M'burg Rays and Ribbons 6 Ruffled Bowl – Green (radium and nice)</p> <p>___ 12. 9 ½" M'burg Rays and Ribbon 6 Ruffled Crimped Edge Bowl – Mari. (radium and nice)</p> <p>___ 13. 10" M'burg Rays and Ribbons Bowl with 3 in 1 Edge – Mari. (satiny finish)</p> <p>___ 14. M'burg Peacock Tail Variant 6 Ruffled Compote – Amyth. (radium)</p> <p>___ 15. 8 ½" TALL M'BURG ROSILAND 6 RUFFLED JELLY COMPOTE – GREEN (EXTREMELY RARE ITEM; NICE COLOR AND IRID.)</p> <p>___ 16. M'burg Poppy Stemmed Flared Compote – Amyth. (radium and rare; nice irid. that's lighter on the edge)</p> | <p>___ 17. 10" M'BURG HANGING CHERRIES 6 RUFFLED BOWL WITH HOBNAIL EXT. – MARI. (SATINY FINISH WITH A NICE LIGHT IRID.)</p> <p>___ 18. 8 5/8" M'burg Hanging Cherries 6 Ruffled Bowl – Amyth. (radium and nice)</p> <p>___ 19. (4) M'burg Hanging Cherries Tumblers with Manuf. Ground Base – Amyth. (radium and nice; one has a chip near the bottom; selling 3 times the money)</p> <p>___ 20. M'BURG BERNHEIMER BROTHERS LG. 6 RUFFLED BOWL – BLUE (VERY RARE AND VERY DESIRABLE; NICE ITEM)</p> <p>___ 21. 9 ¾" M'BURG MANY STARS 6 RUFFLED BOWL WITH 6 POINTED CENTER STAR – AMYTH. (RADIUM AND VERY DESIRABLE; NICE COLOR AND IRID.)</p> <p>___ 22. 9 ¾" M'BURG MANY STARS BOWL WITH 3 IN 1 EDGE AND 6 POINTED CENTER STAR – MARI. (RADIUM AND A REALLY NICE SHAPE; ATTRACTIVE)</p> <p>___ 23. 7 ¾" M'burg Little Stars 6 Ruffled Bowl – Green (satiny and nice)</p> <p>___ 24. 7 ½" M'burg Little Stars 6 Ruffled Bowl – Mari. (satiny and nice)</p> <p>___ 25. 8 ¾" TALL X 5 ¾" BASE M'BURG WILD ROSE KEROSENE LAMP – MARI. (VERY RARE AND VERY DESIRABLE; REALLY DIFFICULT TO FIND)</p> <p>___ 26. 10" M'burg Fleur de Lis Bowl with 3 in 1 Edge – Green (satiny and scarce)</p> <p>___ 27. 10" M'burg Fleur de Lis Bowl with 3 in 1 Edge – Mari. (satiny and scarce)</p> <p>___ 28. 9 ¾" M'burg Nesting Swan 6 Ruffled Bowl – Mari. (satiny; scarce)</p> <p>___ 29. 9" M'burg Trout and Fly 6 Ruffled Bowl – Mari. (satiny; desirable)</p> <p>___ 30. 3" TALL X 5" DIAM. M'BURG STRAWBERRY WREATH WHIMSEY ROSE BOWL – AMYTH. (EXTREMELY RARE SHAPE FOR THIS COLOR; NICE SATINY FINISH)</p> <p>___ 31. M'burg Leaf and Little Flowers 6 Ruffled Compote – Green (satiny and very scarce)</p> |
|--|---|

32.	10" M'burg Primrose 6 Ruffled Bowl – Green (satiny finish)	56.	9" FENTON CONCORD GRAPE FLARED PLATE – MARI. (RARE AND VERY DESIRABLE; NICE IRID.)
33.	8 ¾" M'burg Blackberry Wreath Bowl with 3 in 1 Edge – Green (satiny finish)	57.	8 ¾" Fenton Concord Grape 6 Ruffled Bowl – Amyth. (very scarce; nice gold highlights)
34.	8 ¼" M'burg Grape Wreath Variant Bowl with 3 in 1 Edge – Amyth. (radium and really nice)	58.	6 ¼" Fenton Acorns Deep Round Flared Bowl – Mari. / Aqua (very attractive example; nice)
35.	M'BURG GREENGARD FURNITURE ADVERTISING DOUBLE HANDGRIP PLATE – AMYTH. (EXTREMELY RARE ITEM TO FIND; NICE DETAIL)	59.	7" Fenton Acorns I.C. Shaped Bowl – Green (scarce color; very dark irid.)
36.	10" M'burg Seaweed Lg. 6 Ruffled Bowl – Amyth. (satiny and nice; roughness around base)	60.	9" FENTON HOLLY 8 RUFFLED BOWL – RED (RARE AND VERY DESIRABLE... "CHERRY RED")
37.	9 ¾" M'burg Whirling Leaves 6 Ruffled Bowl – Amyth. (radium and really nice; attractive)	61.	9" FENTON HOLLY 8 RUFFLED BOWL – P. OPAL. (EXTREMELY RARE COLOR TO FIND; NICE)
38.	8" M'burg Holly Sprig Tri-Cornered Bowl – Amyth. (radium and really nice shape and color)	62.	9" FENTON HOLLY 8 RUFFLED BOWL – ODD AMBER RED STREAKS (VERY UNUSUAL AMBER BOWL WITH A SPOT OF RED)
39.	M'burg Holly Sprig 2 Handled 2 sided Card Tray – Mari. (satiny finish)	63.	9" Fenton Holly 8 Ruffled Bowl – Amyth. (has a dark satiny irid.; scarce)
40.	M'BURG TRACERY LG. 2 HANDLED OVAL BON BON – GREEN (RARE; VERY DESIRABLE WITH A NICE SATINY FINISH)	64.	8 ¾" Fenton Holly 8 Ruffled Bowl – Mari. / Vaseline (rare base color; nice bright satiny finish)
41.	M'burg Hanging Cherries 2 Handled Spooner – Mari. (satiny finish)	65.	9 ½" FENTON HOLLY FLARED PLATE – AMYTH. (RARE AND DESIRABLE WITH A BRIGHT MULTI-COLORED IRID.)
42.	7" Fenton Peacock and Dahlia 6 Ruffled Bowl – Mari. / Aqua (scarce color; nice dark irid.)	66.	9 ¾" Fenton Holly Flared Plate – White (very scarce with a blue finish)
43.	6 ½" Fenton Peacock and Dahlia Ice Cream Shaped Bowl – Mari. / Vaseline (scarce color; has bubble flaw on edge)	67.	9" Fenton Holly Bowl with 3 in 1 Edge – Green (scarce shape and color with a nice satiny finish)
44.	9 5/8" Fenton Feathered Serpent Bowl with 3 in 1 Edge – Amyth. (nice satiny finish)	68.	9" Fenton Holly Bowl with 3 in 1 Edge – Dark Greeny Blue (very odd base color; dark satiny finish)
45.	9 ¾" FENTON PANTHER 3 FTD. I.C. SHAPED CENTERPIECE BOWL – DK. MARI. (VERY RARE ITEM AND HAS TO BE ONE OF THE BETTER EXAMPLES KNOWN)	69.	9 ¼" Fenton Holly Bowl with 3 in 1 Edge – Steel Blue (odd base tint)
46.	FENTON VINTAGE GRAPE 3 FTD. FERN DISH – RED / AMBERINA (REALLY FLASHY IRID. WITH AN UNUSUAL BASE COLOR)	70.	8 1/8" Fenton Holly I.C. Shaped Bowl – Amyth. (beautiful irid.)
47.	7 ¾" Fenton Vintage Grape Flat Plate – Blue (attractive gold irid. with blue and red highlights)	71.	FENTON HOLLY 6 RUFFLED HAT SHAPE – RED (DARK; GOLDISH IRID.)
48.	6 ½" Fenton Vintage Grape Deep Round Flared Bowl – Amyth. Opal. (rare color; very light silvery irid.)	72.	Fenton Holly Stemmed 6 Ruffled Compote – Green (scarce color)
49.	8 ½" Fenton Vintage Grape Bowl with 3 in 1 Edge – Mari. / Vaseline (rare base glass; nice overlay)	73.	9 ¼" Fenton Three Fruits 12 sided Plate – Green (sorta nice irid.)
50.	FENTON paneled DANDELION 2 PC. CANDLE LAMP – BLUE (CAN WE SAY... "EXTREMELY RARE?!?!")	74.	8 3/8" Fenton Persian Medallion Deep Round Master Berry Bowl – Blue (a beaut!; nice)
51.	9 ½" Fenton Leaf Chain Flared Plate – Clamb. (light irid. with goldish highlights)	75.	FENTON APPLE TREE HANDLED BULBOUS WATER PITCHER – WHITE (RARE AND DESIRABLE WITH EXCELLENT IRID.)
52.	8 ½" Fenton Leaf Chain I. C. Shaped Bowl – White (nice irid.)	76.	(2) Fenton Apple Tree Tumblers – White (very scarce with excellent irid.)
53.	8 5/8" Fenton Leaf Chain 6 Ruffled Bowl – Dk. Mari. (nice irid.)	77.	9 ¾" Fenton Fine Rib Standard Swung Vase – Dk. Red (rare; desirable; dark)
54.	7" Fenton Leaf Chain 6 Ruffled Bowl with Chestnut Ext. – White (super irid.)	78.	8 ¾" Fenton Fine Rib Standard Swung Vase – Aqua (scarce base color)
55.	9" FENTON CONCORD GRAPE FLARED PLATE – AMYTH. (RARE; VERY DESIRABLE WITH GREAT IRID.; NICE ITEM)	79.	11 ½" Fenton Fine Rib Swung Vase – Mari. / Vaseline (nice size; glows)
		80.	10" FENTON PLUME PANELS SWUNG VASE – RED (VERY RARE AND VERY DESIRABLE; TOUGH ITEM)

81.	11 3/4" FENTON PLUME PANELS SWUNG VASE – MARI. / VASELINE (ACTUALLY VERY RARE TO FIND)	104.	FENTON "COMPLIMENTS OF PACIFIC COAST MAIL ORDER" G & C FTD. RUFFLED FRUIT BOWL – BLUE (EXTREMELY RARE ESP. IN THIS COLOR; HAS A HAIRLINE)
82.	10 7/8" Fenton Knotted Beads Swung Vase – Blue (nice color and irid.)	105.	9" FENTON DRAGON AND STRAWBERRY I.C. SHAPED BOWL – AMYTH. (VERY RARE COLOR FOR THIS ITEM; REALLY NICE!)
83.	10 1/2" Fenton Wide Panel Swung Vase – Green (nice color)	106.	9 1/2" Fenton Dragon and Strawberry ball ftd. Ruffled Bowl – Mari. (rare and desirable; nice color and irid.)
84.	6 1/2" Fenton 3 Diamonds and Bows Swung Vase – Blue (nice satiny finish)	107.	8 1/2 - 9" FENTON DRAGON AND LOTUS 8 RUFFLED BOWL – P. OPAL. (RARE AND DESIRABLE; NICE OPAL ON EDGE)
85.	FENTON BUTTERFLY AND BERRY 7 PC. WATER SET – GREEN (VERY RARE AND VERY DESIRABLE SET; GREAT COLOR)	108.	8 1/2" Fenton Dragon and Lotus Bowl with 3 in 1 Edge – Amyth. (a beauty with great detail)
86.	FENTON BLACKBERRY SPRAY 6 RUFFLED HAT – RED (VERY DESIRABLE; NICE COLOR)	109.	FENTON 2 ROW OPEN EDGE 4 SIDED SQUARE HAT – CELESTE BLUE (VERY SCARCE AND ATTRACTIVE)
87.	Fenton Blackberry Spray 6 Ruffled Hat – Amberina (scarce; odd base color)	110.	FENTON BUTTERFLY AND FERN BULBOUS HANDLED WATER PITCHER – GREEN (VERY DESIRABLE; NICE COLOR)
88.	6" Fenton Sailboats 6 Ruffled Sauce – Amyth. (scarce)	111.	Fenton Butterfly and Fern Collar Based Tumbler – Green (nice color)
89.	Fenton Flowers ftd. Flared Nut Bowl – Amyth. (rare shape; great color; chip on one toe)	112.	FENTON BUTTERFLY AND FERN BULBOUS HANDLED WATER PITCHER – AMYTH. (SCARCE; NICE COLOR AND IRID.)
90.	9" FENTON VINTAGE GRAPE FLAT PLATE – DK. GREEN (EXTREMELY RARE ITEM; I DO NOT RECALL MANY EXAMPLES)	113.	7" Fenton Mirrored Lotus 6 Ruffed Bowl – Mari. (scarce pattern)
91.	9 3/8" Fenton G & C spatula ftd. Plate – Dk. Mari. (really nice example)	114.	7 3/4" Fenton Horsehead Medallion Flat Plate – Mari. (scarce; great detail)
92.	Fenton Cherry Circles Round 2 Handled Bon Bon – Amyth. (scarce base color)	115.	9 1/4" FENTON PEACOCK AT THE URN FLARED PLATE – BLUE (VERY SCARCE AND VERY DESIRABLE; NICE)
93.	Fenton Cherry Circles Round 2 Handled Bon Bon – Dk. Mari. (nice irid.)	116.	9 1/2" Fenton Peacock at the Urn Flared Plate – Dk. Mari. (another nice example; great color)
94.	Fenton Illusion 2 Handled 4 sided Bon Bon – Mari. (scarce pattern)	117.	8 3/8" Fenton Peacock at the Urn I.C. Shaped Bowl – Elec. Blue (super highlights)
95.	8 1/2" - 9" FENTON PEACOCK AND GRAPE 8 RUFFLED BOWL – RED (RARE AND DESIRABLE; SATINY FINISH)	118.	8 1/2" Fenton Peacock at the Urn Bowl with 3 in 1 Edge – Green (very scarce color)
96.	9" FENTON PEACOCK AND GRAPE 8 RUFFLED BOWL – DK. P. OPAL. (A BEAUTY; REALLY NICE IRID.)	119.	9" Fenton Peacock at the Urn 8 Ruffled Bowl – Dk. Mari. (really nice color)
97.	8 3/4" Fenton Peacock and Grape 8 Ruffled Bowl – Green (attractive dark satiny finish)	120.	10" FENTON 10 MUMS LG. 6 RUFFLED BOWL – GREEN (VERY SCARCE AND VERY DESIRABLE – GREAT IRID.)
98.	8 3/4" Fenton Peacock and Grape 8 Ruffled Bowl – Amyth. (another attractive satiny finished item)	121.	9 1/8" Fenton Captive Rose Flared Plate – Mari. (very scarce; nice color)
99.	9" Fenton Peacock and Grape 8 Ruffled Bowl – Dk. Mari. (nice color)	122.	6" Fenton Stippled Rays I.C. Shaped Sauce – Reverse Amberina (odd color; nice)
100.	9" FENTON "HEART AND HORSESHOE" GOOD LUCK 8 RUFFLED BOWL – MARI. (VERY RARE AND VERY DESIRABLE; AN EXCELLENT EXAMPLE)	123.	7" Fenton Stippled Rays Flat Plate – Green (silvery irid. but an extremely rare color)
101.	9" FENTON "BIRMINGHAM AGE HERALD" 8 RUFFLED BOWL – AMYTH. (RARE AND VERY DESIRABLE; NICE DETAIL)	124.	6 1/2" Fenton Banded Blackberry Spray Hat on Manuf. Collar Base – Blue (scarce pattern)
102.	9 – 9 1/2" FENTON "SPECTORS DEPARTMENT STORE" HEART AND VINE FLAT PLATE – DK. MARI. (RARE AND DESIRABLE; GREAT COLOR AND DETAIL)	125.	FENTON DAISY 2 HANDLED 4 SIDED BON BON – BLUE (EXTREMELY RARE PATTERN TO FIND IN ANY COLOR)
103.	7 3/4" FENTON "1914 PARKERSBURG B.P.O.E. ELKS" FLAT PLATE – BLUE (ANOTHER RARE AND DESIRABLE ADVERTISING ITEM)	126.	Fenton Strawberry 2 Handled 4 sided Bon Bon – Mari. / Vaseline (scarce base color)
		127.	8 3/4" Fenton Coral 8 Ruffled Bowl – Dk. Mari. (very scarce; great color and irid.)

- ___ 128. 8 ¾" Fenton Plaid 8 Ruffled Bowl – Dk. Mari. (satiny and very scarce) _____ 153. **DUGAN QUESTION MARK 2 HANDLED 4 SIDED BON BON – LAVENDER (RARE BASE COLOR; GREAT IRID.)**
- ___ 129. 8 ½" Fenton Ragged Robin Bowl with 3 in 1 Edge – Mari. (another scarce pattern) _____ 154. 8 ½" Dugan Six Petals low 6 Ruffled Bowl – White (odd flare; super irid.)
- ___ 130. **FENTON ORANGE TREE FTD. RUFFLED FRUIT BOWL – AMYTH. (RARE AS ALL GET OUT!!! WHEN'S THE LAST TIME YOU SAW ONE OF THESE?)** _____ 155. **DUGAN HEAVY IRIS J.I.P. HAT FROM TUMBLER WITH ENAMELED SOUVENIR – WHITE ("SOUVENIR NESHMA IS."; GREAT IRID.)**
- ___ 131. 9 ½" Fenton Orange Tree Flat Plate – Blue (desirable and nice) _____ 156. **DUGAN THUMBPRINT 8 RUFFLED STEMMED COMPOTE – COBALT BLUE (RARE BASE COLOR; SATINY FINISH)**
- ___ 132. 9 ½" Fenton Orange Tree Flared Plate – Dk. Mari. (super irid.) _____ 157. 7" Dugan Fishscale and Beads 6 Ruffled Crimped Edge Bowl – Purp. (super irid.)
- ___ 133. 9 ½" Fenton Orange Tree Flared Plate – White (super irid.) _____ 158. 8 ¼" Dugan Cherries I.C. Shaped Bowl with J.H. Ext. – Purp. (scarce; average irid.)
- ___ 134. 9" Fenton Orange Tree 6 Ruffled Bowl – Mari. (nice color) _____ 159. 10 ½" Dugan Cosmos Variant Chop Plate – Mari. (very scarce and very flat)
- ___ 135. 7" Fenton Orange Tree Deep Round Nut Bowl – Dk. Mari. (odd satiny finish; rare shape) _____ 160. **10 5/8" DUGAN WISHBONE AND SPADES CHOP PLATE – PURP. (RARE AND VERY DESIRABLE; NICE MULTI-COLORED IRID.)**
- ___ 136. Fenton Orange Tree Stemmed 6 Ruffled Compote – Mari. / Lt. Powder Blue (odd base glass) _____ 161. **9" DUGAN APPLE BLOSSOM TWIGS LOW 10 RUFFLED BOWL – SMOKEY LAVENDER (VERY SCARCE AND VERY DESIRABLE COLOR; GREAT IRID.)**
- ___ 137. Pair 14" Tall Fenton Diamond Point Columns Swung Vases – Blue (sold times 2 – they're a matched pair) _____ 162. 9" Dugan Double Stem Rose domed 10 Ruffled Bowl – P. Opal. (nice opal.)
- ___ 138. **FENTON ZIG ZAG WITH ENAMELED COLUMBINE 7 PC. BULBOUS WATER SET – MARI. (VERY DESIRABLE SET WITH NICE ENAM. DECORATION)** _____ 163. 9" Dugan Flowers and Frames domed 10 Ruffled Bowl – Lt. P. Opal. (light irid.)
- ___ 139. Fenton Zig Zag Handled Bulbous Water Pitcher with Enam. Chrysanthemum – Mari. (nice decorated pitcher) _____ 164. 9 ½" Dugan Vintage Grape domed 8 Ruffled Bowl – Mari. (scarce pattern; nice)
- ___ 140. **FENTON KITTENS CEREAL BOWL – BLUE (RARE AND DESIRABLE MINI ITEM)** _____ 165. **DUGAN HARVEST FLOWER (OR SHEATH OF WHEAT) 5 PC. TANKARD WATER SET – MARI. (RARE AND VERY DESIRABLE TANKARD; NICE COLOR – PERFECT!)**
- ___ 141. Fenton Kittens Cereal Bowl – Dk. Mari. (scarce) _____ 166. 8 3/8" Dugan Windflower 6 Ruffled Bowl – Mari. / Lime Green (scarce base color)
- ___ 142. Fenton Kittens Cereal Bowl with 2 sets of Cats – Mari. (scarce) _____ 167. N'wood Thin Rib Lamp Shade – Irid. Luna (scarce; nice irid.)
- ___ 143. Fenton Kittens Ruffled Toothpick Holder – Mari. (scarce) _____ 168. N Round Handled Bushel Basket – Amyth. (nice color)
- ___ 144. Fenton Kittens 6 Ruffled Bowl – Mari. (scarce) _____ 169. 8" Leaf and Beads ftd. Flared Nut Bowl with Floral Interior – Pastel Mari. (super irid.)
- ___ 145. **FENTON KITTENS CUP AND SAUCER – MARI. (SCARCE SET)** _____ 170. **N LEAF AND BEADS FTD. NUT BOWL – AQUA OPAL. (RARE AND VERY DESIRABLE SHAPE; NICE)**
- ___ 146. Diamond Glass Company Adams Rib Stretch Covered Candy Jar – Ice Green (scarce item; nice color) _____ 171. N Leaf and Beads ftd. Nut Bowl – Blue (another rare color for this shape)
- ___ 147. Dugan Nautilus Novelty Creamer – P. Opal. (scarce; nice opal.) _____ 172. N Leaf and Beads ftd. Rose Bowl – White (chipped toe)
- ___ 148. Dugan Pastel Swan Master Salt – Lt. Mari. (scarce; light in color) _____ 173. N Leaf and Beads ftd. Rose Bowl – Elec. Blue (super irid.)
- ___ 149. 5" Tall Dugan Woodlands Bud Vase – Mari. (nice color; scarce pattern) _____ 174. N Leaf and Beads ftd. Rose Bowl with Floral Int. – Dk. Mari. (super item)
- ___ 150. **DUGAN FARMYARD SQUARE RUFFLED BOWL WITH JEWELED HEART EXT. – PURP. (VERY RARE AND EXTREMELY DESIRABLE BOTH IN SHAPE & COLOR)** _____ 175. **N EMBROIDERED MUMS 8 RUFFLED BOWL WITH RIBBED EXT. – AQUA OPAL. (VERY RARE AND VERY DESIRABLE; GREAT OPAL AND IRID.)**
- ___ 151. 9" Dugan Fanciful I.C. Shaped Bowl – White (scarce; super irid.)
- ___ 152. Dugan Question Mark 2 Handled 4 sided Bon Bon – White (frosty and nice)

- ___ 176. **N EMBROIDERED MUMS FLARED PLATE WITH RIBBED EXT. – ICE GREEN (RARE AND DESIRABLE; HAS SORTA AVERAGE IRID.)**
- ___ 177. N Greek Key 8 Ruffled Bowl with Ribbed Ext. – Mari. (scarce; nice)
- ___ 178. N Drapery Tri-Cornered Candy Dish – Ice Blue (scarce; nice irid.)
- ___ 179. 8 ¼" N Prisms (Beads?) Exterior Patterned Bowl – Purp. (scarce in this color)
- ___ 180. **12" N G & C CHOP PLATE WITH BASKETWEAVE EXT. FROM LG. I.C. BOWL – WHITE (EXTREMELY RARE ONE-OF-A-KIND NORTHWOOD RARITY – ORIGINATED IN THE GREAT STATE OF WEST VIRGINIA)**
- ___ 181. **N G & C FTD FERNERY – WHITE (VERY RARE AND VERY DESIRABLE; NICE IRID.)**
- ___ 182. N (or Dugan) G & C ftd Oval Banana Boat – Purp. (super example)
- ___ 183. N G & C 2 Handled 4 sided Bon Bon with Basketweave Ext. – Mari. (nice color)
- ___ 184. N G & C 2 Handled 4 sided Bon Bon with Basketweave Ext. – Blue (nice blue highlights)
- ___ 185. **N G & C HANDLED TANKARD WATER PITCHER – MARI. (RARE SIZE; NICE COLOR AND DESIRABLE!)**
- ___ 186. **N G & C 7 PC. WATER SET – AMYTH. (SUPER COLOR AND IRID.; REALLY NICE)**
- ___ 187. N G & C Covered Sugar Bowl for Table Set – Purp. (nice irid.; very tough part)
- ___ 188. N G & C Spooner – Purp. (scarce item)
- ___ 189. N G & C ftd. Hatpin Holder – Purp. (scarce and always desirable)
- ___ 190. **9" N G & C VARIANT STIPPLED PLATE WITH RIBBED EXT. – GREEN (STILL A TOUGH ITEM TO FIND IN THIS COLOR)**
- ___ 191. 9" N G & C Variant Plate with Plain Ext. – Purp. (scarce; super irid.)
- ___ 192. 9" N G & C Plate with Basketweave Ext. – Green (still a tough item to find in this color)
- ___ 193. 9 ½" N G & C Plate with Basketweave Ext. – Lt. Mari. (light color)
- ___ 194. 6 ¼" N G & C Plate with Basketweave Ext. – Mari. (nice color)
- ___ 195. **N MEMPHIS 2 PC. RUFFLED FRUIT BOWL SET – WHITE (RARE AND VERY DESIRABLE; FROSTY AND NICE)**
- ___ 196. **6 ½" N FERN BRAND HANDGRIP PLATE WITH BASKETWEAVE EXT. – AMYTH. (RARE AND DESIRABLE; NICE COLOR AND DETAIL)**
- ___ 197. N Poppy Ruffled Relish Tray with Ribbed Ext. – Blue (nice color and irid.)
- ___ 198. **8 ¾" N GOOD LUCK STIPPLED BOWL WITH P.C.E. AND NARROW BASE AND RIB EXT. – BLUE (RARE AND DESIRABLE; NICE IRID.)**
- ___ 199. 9" N Good Luck Plate with Basketweave Ext. – Mari. (scarce; satiny)
- ___ 200. **N FERN INTERIOR / DAISY AND PLUME EXTERIOR STEMMED 6 RUFFLED COMPOTE – ICE BLUE (EXTREMELY RARE ITEM; SO FAR THE ONLY ONE KNOWN)**
- ___ 201. N Fern Interior/Daisy and Plume Exterior Stemmed 6 Ruffled Compote – Green (nice satiny finish)
- ___ 202. N Fern Interior/Daisy and Plume Exterior Stemmed 6 Ruffled Compote – Amyth. (nice satiny finish)
- ___ 203. N Fern Interior/Daisy and Plume Exterior Stemmed 6 Ruffled Compote – Mari. (satiny; nice)
- ___ 204. **N BLOSSOMTIME STEMMED 6 RUFFLED COMPOTE – MARI. (VERY SCARCE AND VERY DESIRABLE)**
- ___ 205. **N WISHBONE 2 PC. RUFFLED EPERGNE – PURP. (VERY SCARCE; ALWAYS DESIRABLE)**
- ___ 206. 7 7/8" N Wishbone Deep 8 Ruffled ftd. Bowl with Ruffles and Rings Ext. – Dk. Purp. (nice color and irid.)
- ___ 207. 8 ¼" N Wishbone 8 Ruffled ftd. Bowl with Ruffles and Rings Ext. – Mari. (nice color)
- ___ 208. 8" N Wishbone 8 Ruffled ftd. Bowl with Ruffles and Rings Ext. – Green (nice color and irid.)
- ___ 209. 8 ½" N Wishbone 8 Ruffled ftd. Bowl with Ruffles and Rings Ext. – Ice Blue (rare base color – light irid.)
- ___ 210. **8 ½" N WISHBONE 8 RUFFLED FTD. BOWL WITH RUFFLES AND RINGS EXT. – WHITE (SUPER IRID. AND REALLY DESIRABLE)**
- ___ 211. **N CORN VASE W/ PLAIN BASE – MARI. (RARE AND DESIRABLE ESP. IN THIS COLOR)**
- ___ 212. **N CORN VASE W/ STALK BASE – GREEN (RARE AND DESIRABLE; REALLY NICE COLOR AND IRID.)**
- ___ 213. N Corn Vase w/ Stalk Base– Ice Green (scarce; desirable)
- ___ 214. N Corn Vase w/ Plain Base– White (scarce; desirable)
- ___ 215. **8 ¾" N THREE FRUITS 8 RUFFLED BOWL WITH BASKETWEAVE EXT. – HOREHOUND (QUITE A RARE BASE COLOR FOR THIS ITEM)**
- ___ 216. 9" N Three Fruits Plate with Basketweave Ext. – Amyth. (nice satiny finish)
- ___ 217. 8 ¾" N Three Fruits Stippled 8 Ruffled Bowl with Ribbed Ext. – Mari. (very scarce and sorta dark; nice)
- ___ 218. 8 5/8" N Three Fruits domed 8 Ruffled Bowl with Basketweave Ext. – White (very scarce; nice irid.)
- ___ 219. 8 5/8" N Three Fruits domed 8 Ruffled Bowl with Basketweave Ext. – Green (attractive item)
- ___ 220. 7 3/8" N Fruits and Flowers Plate with Basketweave Ext. – Amyth. (scarce; nice irid.)
- ___ 221. 7 ¼" N Fruits and Flowers Plate with Basketweave Ext. – Green (scarce; nice irid.)

222. 7 1/2" N Fruits and Flowers 6 Ruffled Bowl with Basketweave Ext. – Blue (scarce color; blue highlights)
223. 7 3/8" N Fruits and Flowers Stippled 6 Ruffled Bowl with Basketweave Ext. – Green (rare variation; nice irid.)
224. 8 1/2" N Three Fruits Medallion ftd. 8 Ruffled Bowl with Meander Ext. – Purp. (nice; very desirable)
225. **8 1/2" N NIPPON BOWL WITH P.C.E. AND RIBBED EXT. – LIME GREEN OPAL. (EXTREMELY RARE AND VERY DESIRABLE; SUPER BRIGHT IRID... YA GOTTA SEE IT!)**
226. **8 1/2" N NIPPON BOWL WITH P.C.E. AND RIBBED EXT. – ICE BLUE (VERY SCARCE AND VERY DESIRABLE; NICE)**
227. 8 1/2" N Nippon Bowl with P.C.E. and Ribbed Ext. – Mari. (scarce shape for this color; nice)
228. 8 3/4" N Nippon 8 Ruffled Bowl with Basketweave Ext. – Amyth. (scarce; nice satiny finish)
229. 8 1/2" N Octet domed 8 Ruffled Bowl with Vintage Grape Ext. – Mari. (scarce pattern)
230. **8 3/4" N PEACOCKS BOWL WITH P.C.E. AND RIBBED EXT. – GREEN (RARE; DESIRABLE AND IS AN ATTRACTIVE BRIGHT EXAMPLE)**
231. 8 3/4" N Peacocks 8 Ruffled Bowl with Ribbed Ext. – White (rare and desirable; nice)
232. **9" N PEACOCKS STIPPLED PLATE WITH RIBBED EXT. AND NARROW BASE – MARI. (RARE AND DESIRABLE VARIATION; NICE IRID.)**
233. 9" N Peacocks Plate with Ribbed Ext. – Ice Green (scarce; nice average irid.)
234. **8 3/4" - 9" N POPPY SHOW 8 RUFFLED BOWL – PURP. (RARE AND DESIRABLE WITH REALLY NICE IRID.)**
235. **8 1/2" N STRAWBERRY STIPPLED BOWL WITH P.C.E. AND BASKETWEAVE EXT. – GREEN (RARE VARIATION IN A DESIRABLE SHAPE FOR THIS PATTERN)**
236. 8 3/4" N Strawberry Bowl with P.C.E. and Ribbed Ext. – Purp. (very scarce and attractive)
237. 8 1/2" N Strawberry Bowl with P.C.E. and Plain Ext. – Pastel Mari. (super irid.; quite unusual)
238. **8 3/4" N STRAWBERRY 8 RUFFLED BOWL WITH BASKETWEAVE EXT. – LT. P. OPAL. (ACTUALLY A RARER ITEM THAN THE PLATE)**
239. 8 3/4" N Strawberry Flared Plate with Plain Ext. – Mari. (nice example)
240. **8 1/2" N LATTICE AND POINSETTIA 8 RUFFLED FTD. BOWL WITH RIBBED EXT. – BLUE (VERY RARE AND VERY DESIRABLE; SUPER BLUE HIGHLIGHTS)**
241. **N ROSE SHOW 8 RUFFLED BOWL – ICE BLUE (RARE AND VERY DESIRABLE WITH A NICE DARK COLOR)**
242. **N ROSE SHOW 8 RUFFLED BOWL – MARI. (REALLY SUPER MARIGOLD EXAMPLE; BRIGHT IRID.)**
243. **6 1/4" N BALLARD/MERCED ADVERTISING PLATE – AMYTH. (EXTREMELY RARE ITEM; ONLY SEE THEM AT AUCTION)**
244. 6 3/4" N Tree Trunk Squatty Flared Vase – Green (nice size; nice bright satiny finish)
245. **13" TALL X 4 3/4" BASE N TREE TRUNK MID SIZE SWUNG VASE – GREEN (VERY SCARCE ITEM; NICE COLOR AND SIZE)**
246. 9" Tall N Tree Trunk Standard Swung Vase – Blue (rare base color; really nice blue highlights)
247. **7 3/4" TALL N DIAMOND POINT SQUATTY FLARED VASE – ELEC. BLUE (RARE COLOR FOR THIS PATTERN; A BEAUT!)**
248. 10 1/2" Tall N Diamond Point Swung Vase – Purp. (nice bright irid.)
249. N Beaded Cable ftd. Ruffled Rose Bowl – Blue (scarce color)
250. **IMPERIAL LOGANBERRY VASE – PURP. (ABSOLUTELY SUPER BRIGHT MULTI-COLORED IRID... A GOOD ONE)**
251. **10 1/4" TALL IMPERIAL BEADED BULLSEYE SWUNG VASE – PURP. (SCARCE; SUPER IRID.)**
252. 12" Tall Imperial Freefold oddly Swung Vase – Smoke (super swing; super irid.)
253. 11 3/4" Tall Imperial Freefold Swung Vase – Dk. Mari. (great irid.)
254. 9 3/4" Tall Imperial Parlor Panels Swung Vase – Dk. Mari. (another item with great irid.)
255. **7 1/2" TALL IMPERIAL 3 ROW 6 RUFFLED VASE – MARI. (VERY RARE AND VERY DESIRABLE; PERFECT WITH NICE AVERAGE IRID.)**
256. **IMPERIAL COLONIAL LADY 4 RUFFLED VASE – MARI. (RARE AND VERY DESIRABLE; NOT A LOT SOLD LATELY)**
257. 7 1/2" Imperial Beaded Bullseye Squatty Swung Vase – Mari. (nice irid.)
258. Imperial Hattie Rose Bowl – Mari. (rare and desirable shape for this pattern)
259. 8" Imperial Hattie Deep Round Bowl – Amber (very scarce; nice color)
260. **PAIR IMPERIAL CRUCIFIX CANDLESTICKS – DK. MARI. (RARE AND VERY DESIRABLE PAIR; GREAT COLOR AND IRID.)**
261. **IMPERIAL CORN BOTTLE NOVELTY – DK. MARI. (VERY DESIRABLE ITEM WITH GREAT DARK COLOR)**
262. Imperial Octagon 8 pc. Wine Set – Dk. Mari. (scarce set with great color)
263. (4) Imperial Diamond and Sunburst Stemmed Wine Glasses – Purp. (selling so much each for set)
264. 7 1/4" Imperial 474 Stemmed 8 Ruffled Compote – Mari. (very scarce; nice color)
265. **10" TALL X 6" BASE IMPERIAL ZIPPER LOOP KEROSENE LAMP – SMOKE (VERY RARE; VERY DESIRABLE WITH GREAT IRID.)**

- ___266. **IMPERIAL POINSETTIA HANDLED MILK PITCHER – SMOKE (RARE AND DESIRABLE; SUPER IRID.)** ___290. Pair signed NuArt Stippled Rib Light Shades – Mari. (selling pair for one money)
- ___267. Imperial Poinsettia Handled Milk Pitcher – Dk. Mari. (super irid.) ___291. Imperial signed Iron Cross Interior Ribbed Optic Nut Bowl or Planter – White (has enameled floral band decoration)
- ___268. Imperial Stretch Interior Paneled Creamer – Red (rare part to find... you normally see the sugar) ___292. **9 ¼" EUROPEAN PODS AND POSIES FLARED PLATE – GREEN (HAS OVAL EXTERIOR; SUPER IRID.)**
- ___269. 10" Imperial Acanthus Chop Plate – Mari (very scarce; great irid.) ___293. 8 ¼" European Pods and Posies I.C. Shaped Bowl with Plain Ext. – odd Pastel Green (really unusual; nice)
- ___270. **5 ½" IMPERIAL OPEN ROSE 8 RUFFLED SAUCE – LT. BLUE (VERY RARE BASE COLOR FOR THIS PATTERN; SUPER IRID.)** ___294. **PAIR 9 – 9 ½" TALL U.S. GLASS TWISTED STEM STRETCH BELL BOTTOMED CANDLESTICKS – VASELINE (SUPER PAIR WITH FANTASTIC COLOR)**
- ___271. **8 7/8" IMPERIAL OPEN ROSE LG. 8 RUFFLED BOWL – MARI. / BLUE (QUITE AN UNUSUAL ITEM; BLUE WITH MARIGOLD OVERLAY)** ___295. **U.S. GLASS PALM BEACH WHIMSEY ROSE BOWL / VASE – MARI. / GOLD TRIM (UNUSUAL ITEM; TOUGH TO FIND IN MARIGOLD)**
- ___272. Imperial Fashion 2 Handled Breakfast Open Sugar – Smoke (rare pair; tough to find) ___296. 9 ½" Jenkins Field Thistle Plate – Mari. (very rare item)
- ___273. **IMPERIAL FASHION RUFFLED PUNCH BOWL AND BASE – DK. AMBER TOP / VASELINE / AMBER BASE (WHAT A PUNCH BOWL SET – REALLY RARE AND UNUSUAL COLORS)** ___297. European Curved Star Flower Arranger – Dk. Mari. (dark color with super irid.)
- ___274. Imperial Royalty 10 pc. Ruffled Punch Set – Mari. (very desirable set; looks great with the ruffled top) ___298. European Classical Arts "Rose Bowl" with Green Stain – Mari. (very scarce; nice stain)
- ___275. **9 ½" IMPERIAL EMBOSSED SCROLL FLAT PLATE – PURP. (VERY DESIRABLE – SUPER IRID.)** ___299. 8 ½" European Double Tulip Cylinder Vase – Lt. Mari. (very rare pattern; unusual)
- ___276. 7" Imperial Embossed Scroll Stemmed 8 Ruffled Compote with Curved Star Ext. – Purp. (super irid.; very scarce) ___300. **7 ½" TALL X 3 ¾" WIDE EUROPEAN ROSE GARDEN LG. FAN VASE – MARI. (RARE AND VERY DESIRABLE; GREAT COLOR AND DETAIL)**
- ___277. 7 ¾" Imperial Embossed Scroll deep Round Flared Bowl – Purp. (super irid.) ___301. **3 ½ - 4" TALL EDA "REX" PINCHED IN CYLINDER VASE – DK. MARI. (WHAT A CUTIE; HAS GREAT COLOR AND IRID.)**
- ___278. 9" Imperial Pansy 8 Ruffled Bowl – Purp. (super irid.) ___302. 6 ½" Tall Sowerby Pinwheel (or Derby) Cylinder Vase – Mari. (very scarce; nice)
- ___279. 9" Imperial Pansy 8 Ruffled Bowl – Amber (super base color and irid.) ___303. 8" Tall European Luttich Flared Vase – Mari. (very scarce)
- ___280. **IMPERIAL HEAVY GRAPE FLARED PUNCH BOWL AND BASE – DK. MARI. (RARE IN ANY COLOR – REALLY NICE)** ___304. 9 ¼" European "Poppy" Lg. I.C. Shaped Bowl with Headdress Int. – Lt. Mari. (really scarce; very light)
- ___281. 9 ½" Tall x 3 7/8" Base x 7" Flare Imperial Ripple Mid Size Swung Vase – Purp. (scarce and desirable size; great irid.) ___305. **SOWERBY "DAISY BLOCK" ROW BOAT – DK. MARI. (VERY SCARCE WITH NICE DARK COLOR)**
- ___282. 13" Tall x 3 ¼" Base Imperial Ripple Swung Vase – Purp. (super irid.) ___306. **12" BROCKWITZ "ASTERS" CHOP PLATE – DK. MARI. (RARE AND DESIRABLE; SUPER SIZE AND IRID.)**
- ___283. 12" Tall x 3 3/8" Base Imperial Ripple Swung Vase – Smoke (very scarce; super irid.) ___307. Riihimaki "Sunk Daisy" I.C. Shaped ftd. Bowl – Dk. Mari. (unusual with great color)
- ___284. 13 ¾" Tall x 3 3/8" Base Imperial Ripple Swung Vase – Amber (nice dark color) ___308. Czech (?) Geometric Exterior Patterned Bowl – Dk. Mari. (super irid.)
- ___285. 12 ¼" Tall x 3 3/8" Base Imperial Ripple Swung Vase – Lime Green (rare base color; attractive) ___309. European Embossed Scroll Interior Bowl – Mari. (odd pattern)
- ___286. 10 ¾" Tall Imperial Stretch Interior Paneled Swung Vase – Teal (scarce color; nice) ___310. Tall Jain "Right" Hand Vase – Mari. (scarce)
- ___287. 6 ¼" Tall x 6 ¾" Flare Imperial Stretch Interior Paneled Squatty Flared Vase – White (super frosty) ___311. European Diamond Prisms Covered Butter Dish – Lt. Amber (unusual; odd base color)
- ___288. 10" Tall x 4 ½" Base Imperial Interior Paneled Squatty Funeral Vase – Smoke (very desirable with bright irid.)
- ___289. 9 ½" Tall Imperial Etched Corset Shaped Balloons Cylinder Vase – Mari. (scarce)

- | | | | |
|----------|---|----------|---|
| ___ 312. | WESTMORELAND WILD BERRY COVERED
DRESSER JAR – MARI. (QUITE A RARE ITEM TO
FIND – ESPECIALLY THE LID) | ___ 319. | Rooster Hatpin – Green (scarce) |
| ___ 313. | Westmoreland Estate Breakfast Sugar and Creamer –
Lt. P. Opal. (scarce pair) | ___ 320. | Czech odd Patterned Covered Dresser Jar – Mari.
(unusual) |
| ___ 314. | Maker (?) Rose in Snow Souvenir Goblet – Mari.
("Souvenir – Hazelton, N.D.; very scarce) | ___ 321. | Maker (?) Large Plain Interior Ribbed Exterior
Stemmed 6 Ruffled Compote – Mari. (nice item) |
| ___ 315. | 8" Westmoreland Pillow and Sunburst I.C. Shaped
Bowl – Blue Opal. (super opal.) | ___ 322. | Maker (?) Tall Large Flared Cylinder Vase with
Paneled Optic Interior – Mari. (great color) |
| ___ 316. | 8 ½" Westmoreland Carolina Dogwood I.C. Shaped
Bowl – Mari. / Milk Glass (excellent example –
attractive) | ___ 323. | Dugan / Diamond G & C ftd. Centerpiece Bowl with
Rolled Edge – Dep. Pink (scarce) |
| ___ 317. | Rooster Hatpin – Red (very scarce) | ___ 324. | 1980's Fenton Diving Dolphins Figural Paperweight –
Topaz (in original box) |
| ___ 318. | Rooster Hatpin – Blue (scarce) | ___ 325. | 1997 SGS Double Dolphin Round Flared ftd.
Compote – Purp. |

NOTES

DONALD DORAIS
150 HIGHLAND AVENUE
CUMBERLAND, RI 02864

BURNS

AUCTION SERVICE



Visit www.necga.com for pictures and brochure, Click on carnival glass links page, Look for Burns Auction.
AUCTION FLEX AVAILABLE FOR THIS AUCTION.



LEE MARKLEY
BOX 306
MENTONE, IN 46539

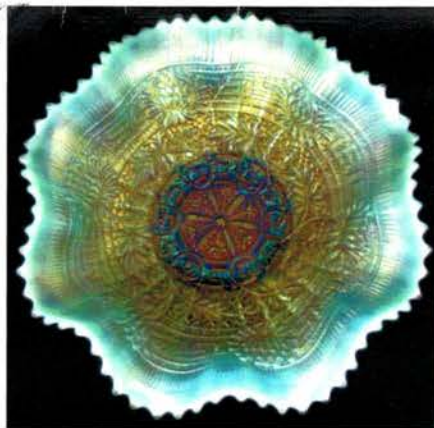
4653980306 B004



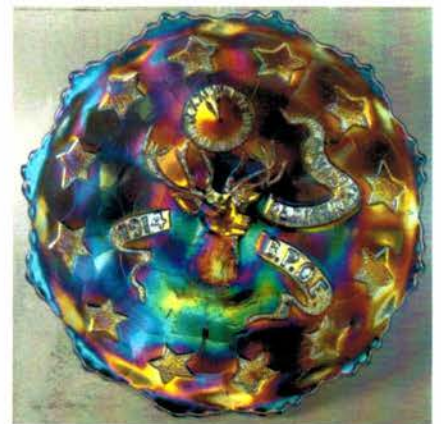
Lot # 250



Lot # 35



Lot # 175



Lot # 103



Lot # 180



Lot # 90



Lot # 225

CARNIVAL GLASS AUCTION SATURDAY, NOVEMBER 3rd at 10:00 A.M.