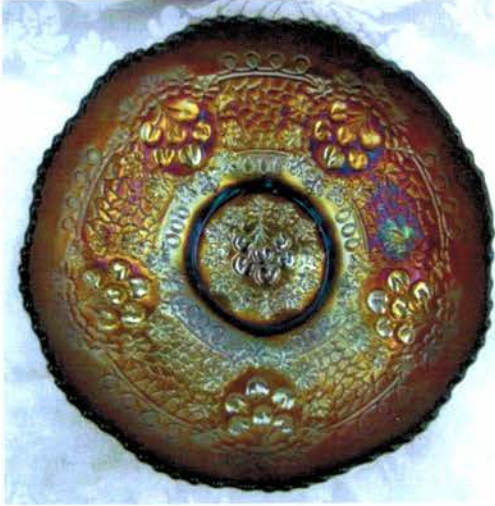


BURNS

AUCTION SERVICE



Lot 240



Lot 170

**2012 MID-ATLANTIC
CARNIVAL GLASS
JAMBOREE**
SATURDAY, OCTOBER 27th
10:30 A.M.

Preview:

Friday evening, October 26th after banquet
Saturday, October 27th at 8:00 a.m.

RAMADA PLAZA HOTEL

1718 Underpass Way, Hagerstown, MD
(Exit 5A off I-81)

(301) 797-2500

For more information, call/write Tom Burns
183 Sunnyside Drive, Clermont, FL 34711



Lot 285



Lot 180



Lot 290

We are pleased to be selling the collection of Greg Dilian from Long Island at this year's 2012 Mid-Atlantic Jamboree. Greg travels all over the Northeast shopping at the major antique shows and flea markets, usually one step ahead of me and has amassed a wonderful selection of beautiful glassware. We hope that you all might attend. You'll be sure to enjoy it.

1. All terms and conditions as previous auctions.
2. **This auction will be on auction flex.** All auction flex bids are due by 11:59 p.m. Friday, October 26th.
3. For further information, call **Tom Burns at (407) 592-6552.**
4. All photos and listings can be viewed at www.necga.com. Click on Carnival Glass Links Page and Look for Burns Auction.
5. For further information on the Mid-Atlantic Jamboree, call Connie O'Connor at 703-524-0752 or email at glassconnie@comcast.net.

P.S. The October 6th auction at the Indiana Mall is cancelled. The glass for that auction will be sold at the Great Lakes Carnival Glass Convention on November 3rd in Lansing, Michigan.

- | | | | |
|--------|--|--------|---|
| ___1. | Singleton Bailey by Fenton Farmyard Rose Bowl – Purp. (signed DBS on back) | ___20. | 9 ¾" TALL IMPERIAL BEADED BULLSEYE SWUNG VASE – LAVENDER (VERY RARE AND DESIRABLE BASE COLOR; HAS HEAT CHECK) |
| ___2. | 1970's Fenton Mermaid Jardinere Shaped Vase – Purp. (signed Fenton in oval) | ___21. | 9 ¾" Tall Imperial Beaded Bullseye Swung Vase – Purp. (super example) |
| ___3. | Signed AP Fenton Christmas Compote Handled Basket Novelty – Elec. Blue (super irid.) | ___22. | 8 ½" Tall Imperial Beaded Bullseye Swung Vase – Amber (scarce color; nice) |
| ___4. | Signed AP Fenton Whimsey Christmas Compote 2 sided Whimsey Banana Dish – Elec. Blue (super irid.) | ___23. | 8 ¾" Tall Imperial Beaded Bullseye Swung Vase – Lime Green / Vaseline (rare base color; not much of an overlay) |
| ___5. | Signed AP Fenton Christmas Compote – Irid. Plum Opal. (super example) | ___24. | 12 ¼" Tall Imperial Bullseye and Beads Swung Vase – Olive Green (odd base color) |
| ___6. | 1997 ICGA Dayton, Ohio Frolicking Bears Vase/ Tumbler – Irid. Plum Opal. (scarce color) | ___25. | 5 ¾" Tall x 5 ½" Flare Imperial Bullseye and Beads Squatty Swung Vase – Dk. Mari. (really neat shape and size; nice and dark) |
| ___7. | (2) Newer Imperial Fieldflower Tumblers – Purp. (selling so much each for the pair) | ___26. | 9" Tall Imperial Lead Lustre Bulbous Based Trumpet Vase – Cobalt Blue with Taffeta Irid. (super irid.) |
| ___8. | Pair Imperial Crackle (Soda Gold) Salt and Pepper Shakers – Aqua/Smoke (very scarce set) | ___27. | 8 ¾" Imperial Taffeta Lustre Rose Bowl on Manuf. Polished Base – Purp. (absolutely super color and irid.) |
| ___9. | 8 ¾" Imperial Columbia dome ftd. Flat Plate – Pastel Mari. (super irid.) | ___28. | 8 ¾" Imperial (Fostoria?) Taffeta Lustre Collar Based Flared Bowl – Purp. (absolutely super color and irid.) |
| ___10. | 17 ½" TALL C 4 7/8" BASE IMPERIAL MORNING GLORY SWUNG FUNERAL VASE – SMOKE (HAS 7 5/8" FLARE; RARE COLOR; TOUGH TO FIND) | ___29. | 9" Imperial Pansy 8 Ruffled Bowl – Purp. (super example) |
| ___11. | 6 ½" Tall Imperial Miniature Morning Glory Swung Vase – Smoke (scarce) | ___30. | 5 ½" TALL IMPERIAL JEWELS PINCHED IN URN SHAPED VASE – SIGNED WITH IRON CROSS – MARI. / MILK GLASS (RARE AND VERY DESIRABLE; GREAT COLOR AND OVERLAY – NICE) |
| ___12. | 16 ¼" TALL X 4 7/8" BASE IMPERIAL MORNING GLORY SWUNG FUNERAL VASE – PURP. (HAS 8" FLARE; ANOTHER SUPER EXAMPLE; NICE; MIGHT HAVE BRUISE ON THE INSIDE) | ___31. | 6 ½" Tall Imperial Jewels Pinched in 8 Ruffled Urn Shaped Vase signed with Iron Cross – Mari. (very scarce; nice) |
| ___13. | 12" Tall Imperial Parlor Panels Swung Vase – Purp. (super irid.) | ___32. | 7" Tall x 9" Flared Imperial Jewels 8 Ruffled Flared Vase signed with Iron Cross – Purp. (very scarce; nice) |
| ___14. | 4 ¾" Tall Imperial Miniature Morning Glory Swung Vase – Purp. (super irid.) | ___33. | 9" Tall x 9" Flare Imperial Jewels Tall Flared 8 Ruffled Vase signed with Iron Cross – Purp. (super irid.; Base edge has been smoothed) |
| ___15. | 16 ½" TALL X 4 7/8" BASE IMPERIAL MORNING GLORY SWUNG FUNERAL VASE – DK. MARI. (HAS 8" FLARE; NICE DARK COLOR AND IRID.) | ___34. | 6 ½" Tall Imperial Jewels Pinched in 8 Ruffled Urn Shaped signed with Iron Cross – Purp. (very scarce; has a desirable; Platinum finish) |
| ___16. | 6 ¼" Tall Imperial Miniature Morning Glory "Really" Swung Vase – Mari. (odd shape) | ___35. | 6" Tall Imperial Jewels Pinched in Flared Urn Shaped Vase – Purp. (another with Platinum finish) |
| ___17. | 4" Tall Imperial Miniature Morning Glory Swung Vase – Mari. (nice size and color) | | |
| ___18. | 12 ¼" Tall Imperial Parlor Panels Swung Vase – Pastel Mari. (absolutely super) | | |
| ___19. | Imperial Star and File Handled Water Pitcher and (2) Tumblers – Dk. Mari. (selling for one price; very dark and scarce) | | |

- ___ 36. **5" TALL IMPERIAL JEWELS TURNED IN VASE SIGNED WITH IRON CROSS – PURP. (SUPER COLOR WITH A SUPER FINISH)**
- ___ 37. 4 ¾" Imperial Jewels Flared Bowl signed with Iron Cross – Purp. (scarce; nice)
- ___ 38. Imperial Embossed Scroll Stemmed 8 Ruffled Compote – Purp. (super irid.)
- ___ 39. 7 ½" Imperial Embossed Scroll 8 Ruffled Compote with Curved Star Ext. – Purp. (super irid.)
- ___ 40. **9 ½" IMPERIAL EMBOSSED SCROLL LG. 8 RUFFLED MASTER BERRY BOWL WITH FILE EXT. – PURP. (SCARCE; SUPER IRID.)**
- ___ 41. (4) 5 ½" Imperial Embossed Scroll Ind. Berry Bowls with File Ext.-Purp. (selling so much each for set; super)
- ___ 42. 7 ¾" Imperial Embossed Scroll 8 Ruffled Bowl with File Ext. – Purp. (super irid.)
- ___ 43. 7 ¼" Imperial Embossed Scroll 8 Ruffled Bowl with Hobstar and Tassels Ext. – Purp. (super scarce and nice)
- ___ 44. 6 ½" Imperial Embossed Scroll deep Round Bowl – Amyth. (super irid.)
- ___ 45. 8" Imperial Embossed Scroll 8 Ruffled Bowl – Lime Green / Mari. (odd color and overlay)
- ___ 46. 9" Imperial Grape 8 Ruffled Bowl – Purp. (super irid.)
- ___ 47. 6 ½" Imperial Grape Flat Plate – Amyth. (scarce; nice irid.)
- ___ 48. 6 ½" Imperial Grape Flat Plate – Amber (very scarce item in this color; nice)
- ___ 49. Imperial Grape Water Carafe – Lt. Amyth. / Lavender (odd lighter Base color; unusual)
- ___ 50. **IMPERIAL COLONIAL LADY 4 RUFFLED VASE – PURP. (MANUF. PEELING ON EDGE; ABSOLUTELY SUPER EXAMPLE; A BEAUT!)**
- ___ 51. Imperial Rococco 6 Ruffled domed Vase – Smoke (scarce; a darker example; perfect)
- ___ 52. Imperial Rococco 6 Ruffled domed Vase – Mari. (scarce; nice)
- ___ 53. 5" Tall Imperial File Whimsey 6 Ruffled domed Vase – Mari. (Very scarce item; tough to find!)
- ___ 54. Imperial Flute Breakfast Sugar and Creamer – Purp. (super pair)
- ___ 55. **IMPERIAL THUMBPRINT AND OVALS VASE – PURP. (ANOTHER BEAUTY WITH SUPER IRID.; NICE)**
- ___ 56. **5 ½" IMPERIAL OPEN ROSE 8 RUFFLED SAUCE – LT. BLUE (RARE IND. BERRY BOWL; A TOUGH COLOR)**
- ___ 57. 5 ½" Imperial Open Rose 8 Ruffled Sauce – Purp. (really nice irid.)
- ___ 58. **9" IMPERIAL OPEN ROSE LG. ROUND MASTER BERRY BOWL – PURP. (ELECTRIC IRID.; QUITE A RARE ITEM)**
- ___ 59. 7 ½" Imperial Shell 8 Ruffled Bowl – Smoke (super irid.)
- ___ 60. **IMPERIAL POINSETTIA HANDLED MILK PITCHER – SMOKE (SUPER SCARCE WITH GREAT IRID.)**
- ___ 61. Imperial Grape Stemmed Wine Glass – Smoke (scarce color; has plain Base)
- ___ 62. Imperial Robin Tumbler – Smoke (chip on Base but still an attractive item)
- ___ 63. 10 ½" Tall x 4 ½" Base Imperial Interior Smooth Panels Swung Funeral Vase – Smoke (nice size; super irid.)
- ___ 64. Pr. 9" Tall Imperial 8 Paneled Candlesticks – Smoke (scarce size; great irid.)
- ___ 65. **PR. IMPERIAL CRUCIFIX CANDLESTICKS – DK. MARI. (RARE PAIR; WELL MATCHED; DARK COLOR)**
- ___ 66. Pr. 7" Tall Imperial Chesterfield Candlesticks – Smoke (great irid.; very scarce)
- ___ 67. 10 ½" Tall x 3 ¼" base Imperial Ripple Swung Vase – Smoke (tough item to find; nice irid.)
- ___ 68. 8 ¾" Tall x 3 7/8" base Imperial Ripple Mid size Squatty Swung Vase – Lt. Amyth. (has 7" flare; great color and irid.; nice)
- ___ 69. 7 ½" Tall x 3 3/8" base Imperial Ripple Squatty Swung Vase – Purp. (super irid.)
- ___ 70. **10 ¾" TALL X 3 3/8" BASE IMPERIAL RIPPLE ODD SWUNG VASE – PURP. (REALLY SUPER IRID.)**
- ___ 71. 11 ¼" Tall x 2 7/8" base Imperial Ripple Standard Swung Vase – Amber (sorta scarce)
- ___ 72. 9" Tall x 2 ½" base Imperial Ripple Small Swung Vase – Clamb. (nice irid.)
- ___ 73. 12" Tall x 3 3/8" base Imperial Ripple Swung Vase – Olive Green (odd tint)
- ___ 74. 4 ½" Tall x 7" Wide Imperial 474 8 Ruffled ftd. Compote – Mari. (scarce item)
- ___ 75. **10 ½" TALL X 4" BASE IMPERIAL GOTHIC ARCHES LG. SWUNG VASE – MARI. (8" FLARE TO A VERY TOUGH VASE)**
- ___ 76. 11" Tall Imperial Freefold Swung Vase – Purp. (super irid.)
- ___ 77. Imperial Hobstar Flower Stemmed 6 Ruffled Compote – Smokey Lavender (rare base color; tough to find)
- ___ 78. Imperial Diamond and Sunburst 6 pc. Wine Set – Dk. Mari. (beautiful set)
- ___ 79. Imperial Diamond and Sunburst Stemmed Wine Glass – Lt. Amyth. / Mari. (odd tint)
- ___ 80. **4 ½" TALL X 2 ½" BASE IMPERIAL STRETCH INTERIOR SMOOTH PANELS SQUATTY SWUNG VASE – RED (WHAT A CUTIE! GREAT SIZE AND COLOR)**
- ___ 81. **PAIR IMPERIAL DOUBLE SCROLL CANDLESTICKS – RED / AMBERINA (VERY SCARCE PAIR; WELL MATCHED)**
- ___ 82. 6 1/8" Tall Imperial Flute and Cane Tankard Flared Vase – Odd Mari. (odd shape and size and irid. is different)

- ___83. Imperial Flute and Cane 2 pc. Sherbet and Underplate – Mari. (scarce set)
- ___84. 7 7/8" x 7 7/8" Imperial Frosted Block Square Plate – Mari. (scarce; nice)
- ___85. Imperial Tiger Lily Tumbler – Purp. (very scarce; nice)
- ___86. Cambridge Inverted Thistle Tumbler – Purp. (scarce; satiny)
- ___87. Cambridge Inverted Strawberry Tumbler – Blue (very rare color; has rough chip on top edge; from the Floyd & Cecil Whitley collection)
- ___88. **CAMBRIDGE SMALL SIZED BUZZ SAW CRUET AND STOPPER – GREEN (HAS METAL SHIELD TAG – "B.P.O.E. NO. 1")**
- ___89. Cambridge Inverted Strawberry Covered Powder Jar – Mari. (very scarce; nice)
- ___90. **CAMBRIDGE INVERTED STRAWBERRY SPITTOON – MARI. (RARE AND DESIRABLE; NICE COLOR AND NICE IRID.; HAS HEAT CHECK IN BASE)**
- ___91. 7 5/8" M'burg Country Kitchen Variant Deep Round Bowl – Crystal
- ___92. 4 1/2" M'burg Country Kitchen Miniature Rose Bowl – Crystal (very scarce item)
- ___93. 5 3/4" M'burg Ohio Star Small Flat Plate – Crystal (rare item)
- ___94. **9" TALL X 9" DIAM. M'BURG WIDE PANEL BLANK FOR PEACOCK AT THE URN COMPOTE – CRYSTAL (VERY RARE CRYSTAL ITEM; NICE)**
- ___95. **M'BURG HOBSTAR AND FEATHER 11 PC. MASTER PUNCH BOWL SET – CRYSTAL FROSTED (RARE AND VERY DESIRABLE SET; GREAT CONDITION)**
- ___96. M'burg Hobstar and Feather Handled Basket – Crystal (very scarce and desirable item)
- ___97. 8" M'burg Hobstar and Feather Hand Grip Diamond Shaped Plate – Crystal (great shape and size)
- ___98. 8" M'burg Hobstar and Feather 2 sided Card Tray from Diamond Shaped Plate – Crystal Frosted (great shape)
- ___99. 6 1/2" M'burg Hobstar and Feather 4 sided Tray from 8" Diamond Shaped Plate – Crystal Frosted (scarce shape)
- ___100. 5 1/2" M'burg Hobstar and Feather Tri-Cornered Sauce – Crystal Frosted (scarce)
- ___101. M'burg Hanging Cherries Covered Butter Dish – Green (odd green base color on base; nice satiny finish)
- ___102. M'burg Hanging Cherries Handled Creamer – Amyth. (super satiny finish)
- ___103. **M'BURG MARILYN HANDLED WATER PITCHER – AMYTH. (RARE AND VERY DESIRABLE; SATINY AND REALLY NICE; FROM THE ED AND MARILYN GAIDA COLLECTION)**
- ___104. M'burg Marilyn Tumbler – Amyth. (scarce; nice satiny finish)
- ___105. **M'BURG PERFECTION TUMBLER – AMYTH. (ABSOLUTELY FANTASTIC; PRETTY MUCH THE BEST I'VE SEEN)**
- ___106. **9 3/4" M'BURG MANY STARS LG. 6 RUFFLED BOWL – AMYTH. (RARE; BLUE IRID.; DESIRABLE AND RADIUM WITH A SIX POINTED STAR)**
- ___107. 7 1/2" M'burg Little Stars 6 Ruffled Bowl – Mari. (nice dark satiny finish)
- ___108. 10 1/8" M'burg Peacock at the Urn Lg. Bowl with 3 in 1 Edge – Amyth. (rare; satiny; has bee but no beading on the urn)
- ___109. 9 1/2" M'burg Nesting Swan Lg. 6 Ruffled Bowl – Amyth. (radium and very desirable)
- ___110. **9 1/2" M'BURG WHIRLING LEAVES LG. 6 RUFFLED CRIMPED EDGE BOWL – GREEN (REALLY NICE RADIUM EXAMPLE WITH BLUE IRID.; SUPER)**
- ___111. 10" M'burg Rosiland Lg. 6 Ruffled Bowl – Green (satiny finish)
- ___112. 10 1/4" Tall M'burg Swirl Hobnail Swung Vase – Purp. (average irid.; tough to find)
- ___113. 11" Tall M'burg Swirl Hobnail Swung Vase – Mari. (nice average color and irid.)
- ___114. **M'BURG LEAF AND LITTLE FLOWERS 6 RUFFLED STEMMED MINIATURE COMPOTE – MARI. (RADIUM AND VERY DESIRABLE)**
- ___115. **9 1/2" M'BURG WHIRLING LEAVES TRI-CORNERED CRIMPED EDGE BOWL – DK. MARI. (RADIUM AND SORTA RARE; NICE IRID.)**
- ___116. 9" M'burg Trout and Fly 6 Ruffled Bowl – Mari. (radium and very desirable)
- ___117. Beaded Purse – Dark. (nice)
- ___118. Rooster Hatpin – Red with Black Decoration (scarce)
- ___119. Top o the Walk Hatpin – Dark (nice)
- ___120. **NASTY BUG HATPIN – DARK (SORTA SILVERY BUT HAS GOT TO BE RARE)**
- ___121. Dimples and Brilliants Hatpin – Dark (nice)
- ___122. Wave Hatpin – Irid. Chocolate (scarce)
- ___123. Turban Hatpin – Dark (scarce)
- ___124. **DOUBLE CROWN HATPIN – DARK (REALLY NICE)**
- ___125. Basket Flower Hatpin – Dark (unusual color)
- ___126. Oval Prisms (or Flash) Hatpin – Dark (scarce)
- ___127. Scottish Golfer Ashtray – Mari.
- ___128. Dutch Boy and Girl Ashtray – Mari.
- ___129. Contemporary Cut Circles Cologne – Mari.
- ___130. **2" X 2" NOVELTY SITTING DOG FIGURAL – MARI. (VERY RARE AND VERY DESIRABLE MINIATURE; SHOWN IN HARTUNG BOOK 10)**
- ___131. "The Ohio Oil Co." Marathon Oil Co. Pig Piggy Bank – Mari. (scarce)

- ___ 132. Figural Rabbit Piggy Bank – Mari. (scarce)
- ___ 133. The World Globe Piggy Bank – Mari.
- ___ 134. Liberty Bell Piggy Bank – Mari.
- ___ 135. **9 ½" AUSTRALIAN KANGAROO 16 RUFFLED BOWL – PURP. (RARE AND VERY DESIRABLE PATTERN WITH GREAT IRID.)**
- ___ 136. **9 ¾" AUSTRALIAN THUNDERBIRD 12 RUFFLED BOWL – PURP. (RARE AND DESIRABLE – GREAT COLOR AND IRID.)**
- ___ 137. 5 ½" Australian Magpie 8 Ruffled Sauce – Purp. (scarce; super irid.)
- ___ 138. **3 ¼" TALL X 8" AUSTRALIAN BUTTERFLY AND BELLS FTD. SALVER – PURP. (RARE WITH SUPER IRID.; NICE)**
- ___ 139. **4 ½" TALL X 7" AUSTRALIAN BUTTERFLY BUSH STEMMED 12 RUFFLED COMPOTE – PURP. (ANOTHER SCARCE ITEM)**
- ___ 140. 9 ¾" Tall Australian Swirled Gum Tip Swung Vase – Purp. (very scarce; nice irid.)
- ___ 141. Sowerby Swan Covered Butter Dish – Blue (scarce)
- ___ 142. Sowerby Hen on the Nest Covered Butter Dish – Blue
- ___ 143. **BROCKWITZ CURVED STAR FTD. CHALICE – BLUE (VERY SCARCE; GREAT COLOR AND IRID.)**
- ___ 144. Brockwitz "Texas Tumbler" Vase – Blue (very scarce and very desirable)
- ___ 145. **BROCKWITZ "LUCILLE" TUMBLER – BLUE (VERY SCARCE AND ATTRACTIVE)**
- ___ 146. **7 ¾" TALL EDA SUNFLOWER AND DIAMONDS VASE – BLUE (SCARCE; SUPER BRIGHT IRID.)**
- ___ 147. **EDA FLORAL SUNBURST VASE – BLUE (VERY SCARCE; NICE)**
- ___ 148. 6" Brockwitz Aster Turned in Rose Bowl – Dk. Mari. (great irid. on outside, spotty on inside)
- ___ 149. Sowerby 2 Handled 8 sided Little Basket – Mari.
- ___ 150. **FOSTORIA BROCADED ACORNS LG. STEMMED ROUND COMPOTE – ICE BLUE (RARE AND VERY DESIRABLE; GREAT COLOR AND IRID.)**
- ___ 151. **5" TALL X 6 ¼" DIAM. FOSTORIA (?) CHIPPED ICE 2 HANDLED ICE BUCKET – CLEAR IRID. (UNUSUAL ITEM WITH EXCELLENT IRID.)**
- ___ 152. **PAIR 3" TALL FOSTORIA SQUATTY CANDLESTICKS – TAFFETA LUSTRE (SUPER IRID.; WELL MATCHED WITH ORIGINAL LABEL)**
- ___ 153. 1 ½" Tall x 3 ¼" Diam. Heisey Princess ftd. Salt – Lt. Mari. (rare miniature)
- ___ 154. Early Brilliant Cut Water Carafe – Amber Marigold (an oddball item)
- ___ 155. Central Glass Company 4 pc. Console Set – Irid. / Clear Opal. (super set; nice opal. and irid.)
- ___ 156. Signed Devilbiss 6 Paneled Atomizer – Cranb. Flash (very scarce; has nice gold signature)
- ___ 157. **3" TALL "JOAN OF ARC – SMELLING SALTS" BOTTLE – MARI. (VERY SCARCE MINIATURE)**
- ___ 158. Maker (?) Unsigned Rectangular Deco. Cologne Bottle – Mari. (unusual item; stopper is rough)
- ___ 159. U.S. Glass "Simplicity Scroll" Patterned 2 pc. Smoke Set – Gray Flash (scarce)
- ___ 160. **3 ½" TALL U.S. GLASS ESTATE PERFUME BOTTLE AND STOPPER – GRAY FLASH (VERY SCARCE)**
- ___ 161. 3 ½" Length x 1 ¼" Width Imperial Rectangular Covered Pin Dish – Mari. (Souvenir Charlottestown P.E.I. Canada)
- ___ 162. Pair 4" Tall Diamond Patterned Salt and Pepper Shakers – Mari. (unusual pair)
- ___ 163. Pair 5 ¾" Tall Czech Mary Gregory ftd. Glasses – (1) Boy and (1) Girl – Cranb. Flash (attractive pair)
- ___ 164. Pair 10 ¼" Tall Czech Blown in Mold Candlesticks – Lt. Mari. / Green Stain (scarce pair; nice decoration)
- ___ 165. **PAIR SIGNED HEISEY 4 ½" TALL COLONIAL STYLE CHILD'S CANDLESTICKS WITH ENAM. FLORAL BAND DECORATION – CLEAR IRID. (RARE MINIATURE PAIR; SIGNED)**
- ___ 166. Pair 8" Tall Westmoreland #1027 Scepter Candlesticks with (2) Elegant Era Bobeche – Clear Irid.
- ___ 167. **U.S. GLASS HOBNAIL PANELS LG. FAN VASE – MARI. (VERY RARE ITEM; NOT MANY AROUND; FROM GAIDA AUCTION)**
- ___ 168. Dugan Peacock at the Fountain Tumbler – odd Blue (scarce Base color)
- ___ 169. Dugan Peacock at the Fountain Tumbler – Mari. (nice satiny finish)
- ___ 170. **8 ¾" DUGAN CAROLINE 10 RUFFLED BOWL – AMYTH. (WOW!!! ABSOLUTELY SUPER AND ABSOLUTELY RARE)**
- ___ 171. **9 ½" DUGAN CHERRIES 8 RUFFLED BOWL WITH J.H. EXT. – PURP. (VERY SCARCE; REALLY NICE COLOR AND IRID.)**
- ___ 172. **9 ½" DUGAN CHERRIES 6 RUFFLED BOWL WITH J. H. EXT. PURP. (VERY SCARCE WITH NICE COLOR AND IRID.)**
- ___ 173. 6 ½" Dugan Cherries Tight Crimped Edge Plate with J. H. Ext. – Purp. (very scarce with great color and irid.)
- ___ 174. **6" DUGAN PETAL AND FAN TIGHT CRIMPED EDGE PLATE WITH J.H. EXT. – PURP. (ANOTHER SUPER ITEM; REALLY NICE)**
- ___ 175. 11" Dugan Ski Star Lg. 6 Ruffled Bowl with Compass Ext. – Amyth. (sorta satiny but nice multi-colored)
- ___ 176. 9 ¼" Dugan Double Stem Rose domed Bowl with 3 in 1 Edge – Amyth. (sorta radium – a really flashy finish)

- ___177. 9" Dugan Flowers and Frames domed 10 Ruffled Bowl – Purp. (super bright example)
- ___178. **6 7/8" DUGAN FISHSCALE AND BEADS LOW 8 RUFFLED BOWL – PURP. (ONE OF THE BETTER EXAMPLES I'VE SEEN)**
- ___179. **8 3/4" DUGAN LATTICE HEART FLARED PLATE – AMYTH. (ANOTHER VERY SCARCE ITEM WITH NICE IRID.)**
- ___180. **11 1/2" DUGAN GARDEN PATH VARIANT CHOP PLATE WITH SODA GOLD EXT. – P. OPAL. (RARE AND VERY DESIRABLE; SUPER OPAL. AND IRID.)**
- ___181. (6) 5" Dugan Garden Path Variant Deep Round ind. Berry Bowl with Soda Gold Ext. – P. Opal. (super set – selling so much each for set)
- ___182. 6 1/2" Dugan Four Flower Flat Plate with Plain Ext. – P. Opal. (very scarce; great opal. and overlay)
- ___183. 6 1/2" Dugan Ski Star Crimped Edge Plate with Compass Ext. – P. Opal. (scarce; great opal. with a satiny finish)
- ___184. 7 1/4" Dugan Fishscale Tight Crimped Flared Plate – P. Opal. (great opal.)
- ___185. 8 1/2" Dugan Fanciful I.C. Shaped Bowl/Plate – White (super irid.; scarce)
- ___186. 9" Dugan Fanciful Bowl with 3 in1 Edge – White (nice irid.)
- ___187. 9" Dugan Apple Blossom Twig 10 Ruffled Bowl – White (really attractive item with bright irid.)
- ___188. 8 1/4" Dugan Apple Blossom Twigs I.C. Shaped Bowl – P. Opal. (great opal.; nice marigold overlay)
- ___189. 9 1/4" Dugan Apple Blossom Twigs low 10 Ruffled Bowl with Plain Edge and Ext. – Purp. (has bright gold highlights)
- ___190. **8 1/2" TALL DUGAN VINING TWIGS SWUNG VASE – AMYTH. (ABSOLUTELY FANTASTIC IRID. ON A LIGHT BASE GLASS)**
- ___191. 7 1/2 - 3/4" Tall Dugan Vining Twigs Swung Vase – Blue (rare Base color; satiny finish)
- ___192. 10 3/4" Tall Dugan Spiralex Swung Vase – Purp. (really nice example; has bright irid.)
- ___193. **10" TALL DUGAN SPIRALEX VARIANT SWUNG VASE – AQUA/MARI. (VERY RARE BASE COLOR; NICE)**
- ___194. **3 1/4" TALL DUGAN ESTATE TRI-CORNERED MINI BULBOUS VASE – LIMEY GREEN / LT. MARI. (RARE MINIATURE; NICE COLOR AND OVERLAY)**
- ___195. **12 1/2" TALL DUGAN TARGET SWUNG VASE – ELEC. PURP. (ANOTHER REALLY NICE EXAMPLE)**
- ___196. 10 7/8" Tall Dugan Target Variant Swung Vase – Blue (scarce Base color)
- ___197. 10 3/4" Tall Dugan Target Variant Swung Vase – Clear White (odd variation; nice irid.)
- ___198. 6 1/4" Tall Dugan Target Squatty 6 Pointed Flared Vase – White (scarce size)
- ___199. 5 1/4" Tall Dugan Many Ribs 6 Ruffled Vase – P. Opal. / Camphor (nice opal.)
- ___200. **4 1/2" TALL X 6" DIAM. DUGAN LINED LATTICE SQUATTY FLARED VASE – PURP. (RARE AND VERY DESIRABLE SHAPE AND SIZE; NICE IRID.)**
- ___201. **9 1/2" TALL DUGAN PULLED LOOP SWUNG VASE – PURP. (SUPER IRID.)**
- ___202. **11 1/2" TALL DUGAN PULLED LOOP VARIANT SWUNG VASE – BLUE (RARE BASE COLOR)**
- ___203. Dugan Fan ftd. Ruffled Handled Gravy Boat – Purp. (very scarce item)
- ___204. Dugan Grape Delight 6 ftd. Nut Bowl – Purp. (super irid.)
- ___205. **8" DUGAN PANELED CHERRIES 3 FTD. FLARED CRIMPED EDGE BOWL – PURP. (GREAT SHAPE WITH REALLY NICE IRID.)**
- ___206. 9" Dugan Paneled Cherries 2 ftd. 2 sided Ruffled Banana Dish – Purp. (sorta goldish; very scarce; nick on foot)
- ___207. **DUGAN 2 HANDLED 2 SIDED BEADED BASKET – PURP. (SUPER IRID.; SCARCE)**
- ___208. Dugan 2 Handled 2 sided Beaded Basket – Blue (very rare Base color; satiny finish)
- ___209. Dugan 2 Handled Round Beaded Basket – White (super irid.; scarce)
- ___210. **10 1/2" TALL DUGAN VENETIAN LINE PINCHED IN TRI-SHAPED BULBOUS VASE – AQUA WITH FRIT. (RARE SIZE AND SHAPE – REALLY NEAT AND VERY DESIRABLE)**
- ___211. 7 1/2" Tall Dugan Venetian Line Hyacinth Tri-Cornered Vase with Round Top – P. Opal. with Frit. (very scarce and desirable; nice)
- ___212. Dugan Nautilus Open Spooner Novelty – signed Script Northwood – P. Opal. (very scarce; nice)
- ___213. 6 5/8" Dugan Persian Garden Flat Plate with Basketweave Ext. – Mari. (really nice example; great irid.)
- ___214. 8 1/4" Dugan Pony 10 Ruffled Bowl – Mari. (nice satiny finish)
- ___215. **DUGAN CIRCLE SCROLL J.I.P. HAT FROM TUMBLER – PURP. (SUPER IRID.)**
- ___216. Dugan Circle Scroll J.I.P. Hat from Tumbler – Mari. (very scarce; nice)
- ___217. Dugan Circle Scroll 2 sided Hat from Tumbler – Purp. (non-iridized ext. but super on inside)
- ___218. Dugan Circle Scroll Tri-Cornered Hat From Tumbler – Mari. (scarce shape)
- ___219. 9" Dugan Border Plants Crimped Edge Hand Grip domed Plate – P. Opal. (great opal.; really nice example)
- ___220. **DUGAN PEACOCK AT THE FOUNTAIN 7 PC. WATER SET – BLUE (VERY SCARCE AND VERY DESIRABLE)**
- ___221. Dugan Heavy Iris Tumbler – Elec. Purp. (super example)
- ___222. Dugan Maple Leaf Tumbler – Violet (rare base color; nice irid.)

223. 1 3/4" Tall x 4" Diam. U.S. Glass Palm Beach Turned in Rose Bowl from Berry Bowl with Gooseberry Int. – White (has silver trim; nice small item)
224. 4 1/2" Tall x 5 3/4" Diam. U.S. Glass Cosmos and Cane Punch Bowl shaped Compote – Honey Amber (scarce and very desirable; nice)
225. **PAIR 9 1/2" TALL U.S. GLASS TWISTED STEM CANDLESTICKS WITH ATTACHED BOBECHE AND BLACK TRIM – VASELINE (SUPER EXAMPLES)**
226. Pair 9 1/2" Tall U.S. Glass Stretch Bell Shaped Twisted Stem Candlesticks – Vaseline (another great colored pair; nice)
227. U.S. Glass Company #310 3 pc. Console Set with 9" Sticks – Vaseline Opaque (very scarce set)
228. Pair 6 1/2" Tall Fenton Stretch #249 "Portly" Candlesticks – Topaz (rare and desirable pair)
229. Pair 6 1/2" Tall Fenton Stretch #249 "Portly" Candlesticks – Ice Green (scarce and desirable pair)
230. Pair 6 1/2" Tall Fenton Stretch #249 "Portly" Candlesticks – Celeste Blue (scarce and desirable pair)
231. Pair 6 1/2" Tall Fenton Stretch #249 "Portly" Candlesticks – Grecian Gold (great color; scarce)
232. Pair 8 1/2" Tall Fenton Stretch #232 Ribbed Candlesticks – Grecian Gold (very scarce and desirable pair)
233. **PAIR 8 1/2" TALL FENTON STRETCH FLORENTINE CANDLESTICKS – PERSIAN PEARL (RARE AND VERY DESIRABLE PAIR)**
234. Pair 9 3/4 – 10" Tall Fenton #549 Candlesticks – Celeste Blue (very scarce and very desirable)
235. Pair 3 1/2" Tall Fenton #1623 Double Dolphin Stretch Squatty Candlesticks – Ice Green (quite tough to find; well matched)
236. **3 1/2" TALL X 6 1/4" DIAM. FENTON STRETCH STIPPLED RAYS I.C. SHAPED COMPOTE – ICE GREEN (VERY SCARCE AND VERY DESIRABLE; NICE)**
237. **9" FENTON STRETCH 3 ROW OPEN EDGE BASKETWEAVE I. C. SHAPED BOWL – CELESTE BLUE (RARE AND DESIRABLE; LARGE STRETCHED SIZE!!!)**
238. 7" Fenton Stretch Lg. 2 Row Open Edge Basketweave 4 sided Square Hat Shape – Ice Green (very scarce and very desirable)
239. **FENTON 2 ROW OPEN EDGE BASKETWEAVE J.I.P. HAT – RED (THIS EXAMPLE IS A BRIGHTLY IRID. ITEM)**
240. **9 1/4" FENTON CHERRY CHAIN LG. I.C. SHAPED BOWL WITH O.T. EXT. – RED (EXTREMELY RARE ITEM – ONE OF 3 KNOWN; HAS DAMAGE AROUND THE EDGE)**
241. **8 1/2" FENTON PERSIAN MEDALLION 8 RUFFLED BOWL – RED (RARE AND VERY DESIRABLE; SATINY FINISH; HAS DAMAGE AROUND THE BASE)**
242. 8 3/4" Fenton Persian Medallion 8 Ruffled Bowl with Berry Ext. – Blue (satiny finish)
243. 6" Diam. Fenton Stretch odd Cupped in Rose Bowl – Red (odd shape and a beautiful example)
244. 6" Fenton Stippled Rays I.C. Shaped Bowl with Scale Band Ext. – Red (bright finish makes it scarce)
245. **FENTON HOLLY 2 SIDED HAT – ELEC. RED (SUPER EXAMPLE)**
246. Fenton Holly 6 Ruffled Hat – Red (really nice example; Amberina at the Base)
247. 8 1/4" Fenton Peacock at the Urn I.C. Shaped Bowl – Green (has a darker satiny finish; very scarce)
248. 8 1/2" Fenton Peacock at the Urn 6 Ruffled Bowl – Blue (average color and irid.)
249. Fenton Butterflies 2 Handled 4 sided Bon Bon with Horlacher Adv. – Amyth. (very scarce advertising item)
250. **FENTON WREATH OF ROSES 7 PC. PUNCH SET WITH PERSIAN MEDALLION INT. – AMYTH. (RARE AND VERY DESIRABLE; BRIGHT IRID.)**
251. 6" Fenton Little Fishes 3 ftd. 6 Ruffled Sauce – Amyth. (scarce color; nice)
252. 9 1/4" Fenton Captive Rose Flared Plate – Amyth. (very scarce item; nice irid.)
253. 9 1/4" Fenton Captive Rose Flared Plate – Dk. Mari. (another scarce item; nice)
254. **9" FENTON LEAF CHAIN FLAT PLATE WITH BERRY EXT. – DK. MARI. (VERY SCARCE WITH RED HIGHLIGHTS)**
255. **4 3/4" FENTON MINIATURE BLACKBERRY WHIMSEY FTD. FLAT PLATE – BLUE (RARE AND VERY DESIRABLE WHIMSEY; BRIGHT FINISH – REALLY NICE!; HAS TYPICAL NICKS AROUND THE BASE)**
256. 7 1/2" Fenton Vintage Grape Flat Plate – Blue (nice satiny finish)
257. 9 1/8" Tall Fenton Butterfly and Berry Swung Vase – Green (scarce color for this item)
258. 9" Tall Fenton Butterfly and Berry Swung Vase – Amber (another very scarce color for this item)
259. **FENTON IRIS STEMMED 6 RUFFLED COMPOTE – BLUE (A BEAUTIFUL EXAMPLE OF THIS RARE COLORED ITEM)**
260. **10 1/2" FENTON CHRYSANTHEMUM BALL FTD. I.C. SHAPED BOWL – ELEC. BLUE (ABSOLUTELY SUPER ITEM; GREAT IRID.)**
261. **6 3/4" TALL X 10" DIAM. FENTON MIKADO LG. STEMMED I.C. SHAPED COMPOTE – BLUE (ANOTHER RARE AND VERY DESIRABLE ITEM; GREAT SHAPE)**

- ___262. **FENTON THISTLE 4 FTD. OBLONG BANANA BOAT – BLUE (SUPER COLOR AND IRID.; REALLY NICE)**
- ___263. Fenton Vintage Grape 3 ftd. Fern Dish – Elec. Blue (bright; super example)
- ___264. **FENTON HORSEHEAD MEDALLION 3 FTD. FLARED NUT BOWL – BLUE (ONE OF THE BETTER EXAMPLES I'VE SEEN)**
- ___265. **9 ½" FENTON HOLLY FLAT PLATE – BLUE (SUPER BRIGHT IRID.; GREAT EXAMPLE)**
- ___266. 9 ¾" Fenton Holly Flat Plate – White with Sun Colored Amyth. (unusual tint with great irid.)
- ___267. 8 ¼" Fenton Orange Tree with Trunk I.C. Shaped Bowl – White (scarce; nice irid.)
- ___268. 12" Tall x 4 1/8" Base Fenton Rustic Mid size Swung Vase – Green (desirable size with a strong satiny finish)
- ___269. 12" Tall x 4 1/8" Base Fenton Rustic Mid size Swung Vase – Mari. (attractive example)
- ___270. **8" FENTON LOTUS AND GRAPE I.C. SHAPED BOWL – MARI. / PERSIAN BLUE (RARE ITEM IN THIS COLOR; ONLY COMES IN (4) PATTERNS)**
- ___271. Fenton Kittens Cereal Bowl – Mari. (scarce; nice color)
- ___272. Fenton Kittens 4 sided Bowl – 2 sets of Cats – Mari. (scarce variation)
- ___273. Fenton Kittens odd Shaped Toothpick Holder – Mari. (scarce; nice)
- ___274. Fenton Kittens 4 sided Toothpick Holder – Mari. (nice shape and color)
- ___275. **FENTON LATTICE AND GRAPE 7 PC. TANKARD WATER SET – BLUE (RARE AND DESIRABLE SET; NICE COLOR)**
- ___276. Fenton Leaf Tiers ftd. Tumbler – Mari. (nice color; scarce item)
- ___277. 7" Fenton Lions 6 Ruffled Bowl – Mari. (nice color and irid.; great detail)
- ___278. N Poppy Oblong Ruffled Relish Tray with Ribbed Ext. – Elec. Blue (super irid.)
- ___279. N Poppy Oblong Ruffled Relish Tray with Ribbed Ext. – Mari. (sorta out of shape; nice color)
- ___280. **N PEACOCK AT THE FOUNTAIN HANDLED WATER PITCHER – ELEC. BLUE (RARE AND DESIRABLE; GREAT BLUE HIGHLIGHTS)**
- ___281. N Peacock at the Fountain Tumbler – Elec. Blue (matches pitcher above; really nice)
- ___282. **N PEACOCK AT THE FOUNTAIN 6 PC. WATER SET – DK. MARI. (VERY SCARCE SET; PINK HIGHLIGHTS)**
- ___283. **N PEACOCK AT THE FOUNTAIN STEMMED RUFFLED COMPOTE WITH PLAIN EXT. – WHITE (RARE AND DESIRABLE; A REALLY NICE EXAMPLE)**
- ___284. **N PEACOCK AT THE FOUNTAIN 3 FTD. RUFFLED FRUIT BOWL – PURP. (RARE AND VERY DESIRABLE; GREAT COLOR & IRID.)**
- ___285. **N PEACOCK AT THE FOUNTAIN 8 PC. RUFFLED PUNCH SET – DK. MARI. (A SUPER, SUPER COLORED SET – ONE OF THE BEST I'VE SEEN)**
- ___286. (2) N Peacock at the Urn ind. Ice Cream Bowls – Elec. Blue (selling choice; one is nice; one is super)
- ___287. N Eight sided Handled Bushel Basket – Blue (scarce; nice color)
- ___288. N Eight sided Handled Bushel Basket – Amyth. (scarce; nice color)
- ___289. N Eight sided Handled Bushel Basket – Dk. Mari. (really nice example)
- ___290. **N DIAMOND POINT HANDLED BUSHEL BASKET – DK. PUMPKIN MARI. (RARE & VERY DESIRABLE; SUPER EXAMPLE)**
- ___291. **N ROUND HANDLED BUSHEL BASKET – ICE BLUE OPAL. (VERY RARE AND A TRUE EXAMPLE; GREAT PASTEL FINISH)**
- ___292. N Round Handled Bushel Basket – Aqua Opal. (rare and desirable; nice item)
- ___293. N Round Handled Bushel Basket – Ice Green (scarce; nice color and irid.)
- ___294. N Round Handled Bushel Basket – White (frosty and nice)
- ___295. N Round Handled Bushel Basket – Amyth. (scarce; nice)
- ___296. N Round Handled Bushel Basket – Blue (scarce; nice)
- ___297. N Round Handled Bushel Basket – Mari. (nice color and irid.)
- ___298. N Round Handled Bushel Basket – Non-Iridized Ebony (unusual; collectible)
- ___299. N Singing Birds Handled Mug – Electric Blue (really nice irid.)
- ___300. **N PEACOCKS BOWL WITH P.C.E. AND RIBBED EXT. – GREEN (RARE AND VERY DESIRABLE; NICE COLOR AND GREAT IRID. WITH EMERALD HIGHLIGHTS)**
- ___301. **N PEACOCKS FLARED PLATE WITH RIBBED EXT. – BLUE / ELEC. BLUE (RARE AND ALWAYS DESIRABLE; GREAT BLUE HIGHLIGHTS)**
- ___302. N Peacocks Flared Plate with Ribbed Ext. – White (scarce with nice irid.)
- ___303. **N PEACOCKS 8 RUFFLED BOWL WITH BASKETWEAVE EXT. – PURP. (RARE VARIATION WITH THIS EXTERIOR PATTERN; GREAT IRID.)**
- ___304. N Peacocks 8 Ruffled Bowl with Ribbed Ext. – Blue (scarce; silvery, gold)
- ___305. N Peacocks 8 Ruffled Bowl with Ribbed Ext. – Mari. (on the pastel side)
- ___306. **N HEARTS AND FLOWERS STEMMED 6 RUFFLED COMPOTE WITH RIBBED EXT. – AMYTH. (VERY SCARCE; NICE BRIGHT IRID.)**

- ___307. N Hearts and Flowers Stemmed 6 Ruffled Compote with Plain Ext. – Mari. (nice color and irid.)
- ___308. **N WISHBONE SINGLE LILY 2 PC. EPERGNE – GREEN (VERY RARE AND VERY DESIRABLE; NICE)**
- ___309. **N WISHBONE SINGLE LILY 2 PC. EPERGNE – AMYTH. (ANOTHER VERY DESIRABLE ITEM WITH NICE IRID.)**
- ___310. **N G & C 11 PC. RUFFLED MASTER PUNCH SET – PURP. (NICK BETWEEN 2 FLUTES AND CHIP ON HIGH PART OF BASE)**
- ___311. **9" N G & C FLARED PLATE WITH PLAIN EXT. – PURP. (STRETCHY; SUPER IRID.)**
- ___312. 10" N G & C 8 Ruffled Stippled Bowl with Basketweave Ext. – Purp. (really bright multi-colored item; scarce)
- ___313. **10 ¾" N G & C LG. 8 RUFFLED BOWL WITH BASKETWEAVE EXT – ELEC. BLUE (SUPER)**
- ___314. 8 ¾" N G & C Variant Stippled Plate with Ribbed Ext. and "Old Rose Distillery" Adv. – Green (rare advertising item; nice gold irid.)
- ___315. **N G & C 8 PC. MID SIZE RUFFLED PUNCH SET WITH STIPPLED CUPS – DK. MARI. (REALLY TOUGH TO FIND; A VERY SCARCE SET; SUPER AND IRID.)**
- ___316. N Beaded Cable ftd. Ruffled Rose Bowl with Rayed Int. – Amyth. (light Base color)
- ___317. N Leaf and Beads ftd. Rose Bowl – Aqua Opal. (very scarce; nice opal. and irid.)
- ___318. 10 ¼" Tall N Thin Rib "Jester's Cap" Swung Vase – Green (swung really tall; unusual)
- ___319. **7 ¾" TALL N THIN RIB "JESTER'S CAP" SWUNG VASE – AMYTH. (VERY SCARCE WITH A BRIGHT SATINY FINISH)**
- ___320. **N ACORN BURR 8 PC. RUFFLED PUNCH SET – GREEN (RARE & VERY DESIRABLE SET; GREAT COLOR – WELL MATCHED)**
- ___321. **N ACORN BURR 7 PC. WATER SET – PURP. (RARE & DESIRABLE; NICE COLOR & IRID.)**
- ___322. N Good Luck Bowl with P.C.E. and Ribbed Ext. – odd Green (scarce item; chip on inside edge)
- ___323. N Good Luck Bowl with P.C.E. and Basketweave Ext. – Purp. (nice color and irid.; scarce)
- ___324. N Good Luck 8 Ruffled Bowl with Ribbed Ext. – Purp. (scarce; nice)
- ___325. **N ORIENTAL POPPY 7 PC. TANKARD WATER SET – PURP. (RARE AND DESIRABLE SET; WELL MATCHED)**
- ___326. **N ROSE SHOW 8 RUFFLED BOWL – ICE BLUE (RARE AND DESIRABLE; NICE PASTEL FINISH)**
- ___327. **N ROSE SHOW 8 RUFFLED BOWL – MARI. (ABSOLUTELY SUPER IRID. – NICE!!!)**
- ___328. N Rose Show 8 Ruffled Bowl – Blue Opal. (not iridized but still very scarce)
- ___329. N Rose Show Flared Plate – White (very scarce with excellent irid.)
- ___330. **N STIPPLED THREE FRUITS MEDALLION 8 RUFFLED FTD. BOWL WITH MEANDER EXT. – AQUA OPAL. (RARE PASTEL EXAMPLE)**
- ___331. **8 ¾" N STRAWBERRY 8 RUFFLED BOWL WITH PLAIN EXT. – EMERALD GREEN (ONE OF MY FAVORITES; SUPER, SUPER ITEM!!!)**
- ___332. 8 ½" N Strawberry 8 Ruffled Bowl with Plain Ext. – Purp. (another well iridized item; nice)
- ___333. **9" N STRAWBERRY FLARED PLATE WITH PLAIN EXT. – ETCHED "MOTHER" ON ONE SIDE, "PROSPECT PARK 1910" ON THE OTHER – AMYTH. (HAS ETCHING AND A SORTA PASTEL FINISH)**
- ___334. **8 7/8" N STRAWBERRY FLARED PLATE WITH PLAIN EXT. – DK. PUMPKIN MARI. (SUPER, SUPER EXAMPLE – PERIOD!)**
- ___335. **N CORN VASE WITH STALK BASE – EMERALD GREEN (REALLY NICE EXAMPLE WITH RED AND BLUE HIGHLIGHTS)**
- ___336. N Ribbed Jack in the Pulpit ftd. Vase – Purp. (excellent example)
- ___337. 8 ½" Tall N Drapery Variant Swung Vase – Blue (scarce item; goldish highlights)
- ___338. 8 ¾" N Greek Key 8 Ruffled Bowl with Basketweave Ext. – Purp. (very scarce; nice)
- ___339. N Grape and Gothic Arches Tumbler – Teal (very scarce Base color)
- ___340. **7 ¼" TALL N TREE TRUNK SQUATTY FLARED STANDARD SIZED VASE – ELEC. BLUE (SUPER IRID. – A VERY DESIRABLE EXAMPLE; CHIP ON INSIDE OF SPOUT)**
- ___341. 6 ½" Tall x 5 ¼" Flare N Tree Trunk Squatty Flared Standard Sized Vase – Green (nice item)
- ___342. 6 ¾" Tall x 5 ½" Flare N Tree Trunk Squatty Flared Standard Sized Vase – Amyth. (nice)
- ___343. **9" TALL N TREE TRUNK STANDARD SWUNG VASE – ELEC. PURP. (BRIGHT COLOR AND IRID.)**
- ___344. **N GRAPE ARBOR 6 PC. TANKARD WATER SET – DK. MARI. (SCARCE AND WELL MATCHED SET; NICE)**
- ___345. 8 ½" Tall N'wood Colonial Paneled Stretch Candlesticks – Dk. Celeste Blue (really nice dark color; well matched)
- ___346. 9 ½" Tall N'wood Paneled Stretch Cathedral ½ lb. Covered Candy Jar – Celeste Blue (nice)
- ___347. 4 ¾" Westmoreland Little Beads ftd. Flared Berry Bowl – Blue Opal. (scarce color)
- ___348. **9" WESTMORELAND CORINTH J.I.P. VASE – BLUE OPAL. (VERY DESIRABLE)**
- ___349. **9" WESTMORELAND CORINTH J.I.P. VASE – LT. MARI. / MOONSTONE (NICE COLOR AND BASE GLASS)**
- ___350. 9 ½" Westmoreland Corinth J.I.P. Vase – Teal (nice color)
- ___351. 10" Westmoreland Corinth J.I.P. Vase – Amber (scarce)
- ___352. 8 ¼" Westmoreland Corinth J.I.P. Vase – Amyth. (satiny finish)

DONALD DORAIS
150 HIGHLAND AVENUE
CUMBERLAND, RI 02864

BURNS

AUCTION SERVICE

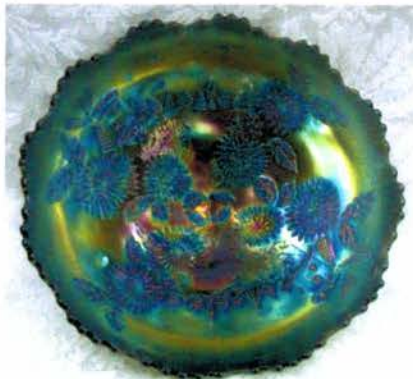


Visit www.necga.com for pictures and brochure, Click on carnival glass links page, Look for Burns Auction.
AUCTION FLEX AVAILABLE FOR THIS AUCTION.



Lot 105

LEE MARKLEY
BOX 306
MENTONE, IN 46539



Lot 260



Lot 95



Lot 261



Lot 50



Lot 65



Lot 55

CARNIVAL GLASS AUCTION SATURDAY, OCTOBER 27TH AT 10:30 A.M.