

*International Carnival
Glass Association Convention*

Auction open to the public

CARNIVAL GLASS 2012 AUCTION

Saturday, July 14, 2012

9:30 a.m.

Crown Plaza Hotel
3000 South Dirksen Pkwy
Springfield, Illinois



**THE
LEONARD
COLLECTION**

Seeck Auctions

Jim & Jan Seeck 641-424-1116

ICGA Convention Auction

SATURDAY, JULY 14, 2012 -- 9:30 a.m.

Crowne Plaza Hotel – Springfield, ILL

NO BUYER'S PREMIUM -- OPEN TO THE PUBLIC

THE LEONARD COLLECTION

(Preview: late afternoon Friday)

For Online Auction Catalog, Check our Website: www.seeckauction.com

Online absentee bidding closes, Friday, July 13 at 6 p.m. CST

Seeck Auctions is honored to be offering the **Geneva and Late Robert Leonard collection** of Carnival Glass at auction at the ICGA convention in Springfield. The Leonard's were very close friends and were always there when we needed help. We miss Bob dearly. Geneva and Bob traveled extensively around to all the conventions and auctions to find the rare and unusual. A good word that sums up their collection would be "Rare" as we used it over and over in describing their glass. They have been collecting for a long time and collections like this just don't get put together very often. It takes years to find rarities like they have. Many of these items are only seen in books. This is a great opportunity to add to your collection! Plan to attend the convention and auction in Illinois this year.

If planning to stay at the hotel, reservations can be made by calling (217)529-7777. The group rate code is "ICG" and the room rate is \$99 per night. If you have questions about the convention, contact President Brian Pitman at: 785-274-9105 or email: bpitman@woodsland.com

Visit the ICGA Website: <http://www.internationalcarnivalglass.com>

AUCTION INFORMATION

Terms: Cash or Check, VISA, MasterCard and Discover accepted w/proper ID. **4% Clerking Fee** on all purchases except for payment of cash or check. Announcements made day of sale take precedence over any printed information.

ABSENTEE BIDDING: We have 3 options for you

1) WRITTEN OR PHONE: If you **DO NOT** have internet access or access to our website, you can: Call us by phone to enter your bids at (641) 424-1116 **OR** By sending the numbers of the item(s) desired and the amount bid on each to: Seeck Auctions, PO Box 377, Mason City, Iowa 50402. (The mail has not been very dependable. We would prefer you call us with your bids rather than send them in a letter.)

- All written and called in bids will be entered into the online catalog by us.

- **Written and Phone Absentee Deadline:** Have all bids in by **Wednesday, July 11.**

2) ONLINE CATALOG: Enter your bids from our website into our online catalog through the Auction Flex system. When you get to the online catalog, you will need to login as a bidder. For the first time you will need to **set up your account** by creating a user name and password. This will include filling out a form with your name, address, etc. You will also need to **register for the auction** which will ask you to enter a valid credit card number. This card will be validated by a \$1 charge to your card. This will only happen once and you will now be able to enter bids through our online catalog by just logging in with your user name and password. You will use this user name and password for all our auctions. You are not required to pay by credit card if you are successful. This is just a safeguard for us if someone does not pay. We will let you know what you owe us through an email and you can decide how you would like to pay us.

- **An exciting advantage of entering your bids online yourself,** is the option to be notified by email if you are outbid on an item. You will know when you are outbid on an item and you can increase your bid on that item or bid on something else. **There will be a cutoff date and time for entering your bids online.** After this time has passed, you will not be able to enter your bids from our online catalog.

- **Remember,** that just because you are the high bidder in the online catalog, this does not mean you have won the item. Your bid will still need to beat the floor bidders and live phone bidders. This system will run our absentee bids just as we did before. You will still be able to buy the item lower than your online bid unless someone on the floor bids you higher.

3) LIVE PHONE BIDDING: Available on pieces with an estimated sale price of \$500 or more. If you would like to participate in live phone bidding, contact us by **the Tuesday before the auction, July 10th.** We will need to know the lot# and the phone number that you can be reached at on the day of the auction. We will also need your home phone number if different than the above number. Please call with questions: 641-424-1116.

- **There is a \$7 handling charge for each successful bid. Shipping and insurance charges are additional.** bidders will be notified by phone/email if their bid(s) are successful. This will be done 1 - 3 days after the auction.

- **If you do not receive an item that sold for less than your bid, assume we cancelled your bid because the item had a severe manufacture problem, damage or was not listed correctly.**

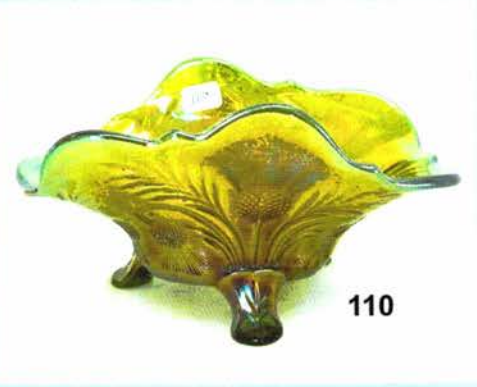
BID INCREMENTS:

\$1 - \$100/\$5	\$100 - \$200/\$10	\$200 - \$700/\$25	\$700 - \$1,500/\$50
	\$1,500 - \$3,000/\$100	\$3,000+ Auctioneer's Discretion	

- 1. Heavy Grape 8" plate - smoke - nice, rare color
- 2. Heavy Grape 8" plate - amber - scarce color
- 3. Heavy Grape 8" plate - purple - nice
- 4. Heavy Grape 8" plate w/smooth edge - marigold - unusual shape, nice
- 5. Pair of Colonial #695 8 1/2" candlesticks - white - has a cut oval type pattern on ribs, but ovals are very small, has etching on base, I've never seen anything like these, super set!
- 6. Concave Diamonds Tumble Up tumbler - russet - rare tumbler
- 7. Concave Diamonds Tumble Up tumbler - vaseline - also rare
- 8. Corn bottle - marigold - nice
- 9. N's Dandelion tumbler - ice blue - pretty
- 10. FOUR SEVENTY FOUR LARGE SIZE 12 1/2" VASE - EMERALD GREEN - ONLY ONE KNOWN, FANTASTIC IRID., SOME PEOPLE BELIEVE THAT THIS MAY BE THE FINEST PIECE OF IMPERIAL CARNIVAL GLASS KNOWN TO EXIST
- 11. Good Luck ruffled bowl w/BW back - purple
- 12. Concord 9" plate - green - super rare & pretty, very minor pinpoint on base by seam
- 13. Concord 9" plate - amethyst - very nice plate, scarce
- 14. Concord 9" plate - marigold - maybe the rarest color of these plates, very pretty, has burst in center of plate
- 15. Vintage 7" plate - green
- 16. PEACOCK AT THE FOUNTAIN 4 PC. TABLE SET - ICE BLUE - EXTREMELY RARE SET & HIGHLY DESIRABLE, NICE, SUGAR BOWL BASE HAS BEEN SLIGHTLY POLISHED ON BASE & MINOR NICKS ON UNDER RIM OF LID
- 17. Peacock at the Fountain 4 pc. table set - white - also very rare set, super nice
- 18. Peacock at the Fountain butter dish, cvd sugar & spooner - green - minor nick on edge of butter dish top, one bead nicked on top edge of sugar lid, extremely rare color for these
- 19. Peacock at the Fountain 4 pc. table set - blue - super pretty set & rare color, minor roughness inside sugar lid
- 20. Peacock at the Fountain 4 pc. table set - purple - nice set
- 21. Stippled Good Luck ruffled bowl w/ribbed back - blue - pretty
- 22. M'BURG MITERED OVALS VASE - GREEN - SUPER PRETTY VASE, EXTREMELY RARE
- 23. M'BURG MITERED OVALS VASE - AMETHYST - ANOTHER GREAT M'BURG VASE, RARE
- 24. Orange Tree standard size mug - white - extremely rare color, one of just a few known, damaged handle
- 25. Orange Tree standard size mug - green - also a rare color
- 26. COSMOS & CANE LADIES SPITTOON - WHITE - VERY RARE & DESIRABLE PIECE OF GLASS, HAS GREAT IRID.!
- 27. COSMOS & CANE LADIES SPITTOON - HONEY AMBER - ALSO HAS GREAT IRID., ANOTHER LITTLE RARITY
- 28. Cobblestone ruffled bowl - purple - pretty
- 29. POPPY PICKLE DISH - IRIDIZED CUSTARD - EXTREMELY RARE PIECE, HIGHLY DESIRABLE
- 30. Poppy pickle dish - aqua opal - super beautiful, does have large chip out of base
- 31. Poppy pickle dish - ice blue - also very pretty, large manufacture separation in base
- 32. Poppy pickle dish - white - nice example, scarce
- 33. Poppy pickle dish - aqua - rare color, not often sold, pretty
- 34. Poppy pickle dish - green - nice
- 35. Poppy pickle dish - purple
- 36. Poppy pickle dish - blue
- 37. Poppy pickle dish - marigold - pretty
- 38. CHRISTMAS GIANT COMPOTE - MARIGOLD - SUPER EXAMPLE THAT IS BEAUTIFUL INSIDE & OUT, RARE
- 39. CHRISTMAS GIANT COMPOTE - PURPLE - SUPER PRETTY, A CARNIVAL CLASSIC
- 40. M'burg Whirling Leaves ruffled bowl - marigold - radium & dark, a super bowl
- 41. Six Sided pair of candlesticks - purple - super pretty pair, rare in purple
- 42. Six Sided pair of candlesticks - amber - probably the hardest color to find, super pretty, burst on base of one stick
- 43. Six Sided pair of candlesticks - green - another hard color
- 44. Six Sided pair of candlesticks - marigold - nice
- 45. M'burg Hanging Cherries butter dish - blue - yes, blue, unfortunately the base is not a Hanging Cherries and does have a chip, only blue Hanging Cherries table set piece that I know of
- 46. M'burg Hanging Cherries 4 pc. table set - green - rare set & nice, minor nicks on inside rim of sugar lid & sugar base
- 47. M'burg Hanging Cherries 4 pc. table set - amethyst scarce set
- 48. M'BURG CLEVELAND MEMORIAL ASHTRAY - MARIGOLD - ONE OF THREE THAT I KNOW OF, ABSOLUTELY SUPER, A GREAT OPPORTUNITY
- 49. M'BURG CLEVELAND MEMORIAL ASHTRAY - AMETHYST - A BEAUTY FOR THIS RARITY, THE RIM OF BASE HAS BEEN PUSHED OUT AT MANUFACTURE & THERE IS A SMALL NICK OFF OF THAT AREA
- 50. Scroll Embossed goblet shaped miniature compote - purple-super, scarce
- 51. Rose Show ruffled bowl - sapphire - extremely rare color, pinpoint on edge, no harm
- 52. Rose Show ruffled bowl - ice green - very pretty & scarce, chip on rose
- 53. Rose Show ruffled bowl - white - nice
- 54. Rose Show ruffled bowl - purple - scarce
- 55. Rose Show ruffled bowl - marigold - pretty, scarce
- 56. WHEAT SWEETMEAT - PURPLE/GREEN - HAS GREEN LID & PURPLE BASE, REALLY NEAT PIECE THAT IS SUPER RARE AND PRETTY SURE THAT IT CAME FROM THE FACTORY THAT WAY, VERY FEW KNOWN
- 57. Peacock Tail 6" plate - blue - rare, lacks irid.
- 58. Peacock Tail 6" plate - marigold - scarce, nice
- 59. FROLICKING BEARS TUMBLER - GREEN - PRETTY FOR THESE, CRACK AROUND BASE, A CHANCE TO BUY ONE OF THE MOST TALKED ABOUT & RARE PATTERNS
- 60. Palm Beach 4 pc. table set - honey amber - rare set & nice
- 61. Palm Beach 4 pc. table set - white - also rare & nice
- 62. Shell & Sand 9" plate - purple - super pretty w/blue irid., rare
- 63. Shell & Sand 9" plate - smoke - also rare & pretty
- 64. Shell & Sand 9" plate - marigold - beautiful
- 65. Shell & Sand 9" plate - green - silver irid.
- 66. Votive Light - marigold - buffed chip on top edge, small chip on base, rare novelty
- 67. M'BURG PIPE HUMIDOR - MARIGOLD - SUPER PRETTY, SUPER RARE, A SPECIAL PIECE OF GLASS
- 68. Apple Blossom Twigs 3 in 1 edge bowl - white - nice
- 69. ORANGE TREE SPOONER - CELESTE BLUE - ONLY ONE KNOWN, THIS HAS FANTASTIC IRID., TRY TO COMPLETE THIS SET! LOL!
- 70. Fentonia Fruit tumbler - blue - rare
- 71. Thumbprint & Ovals vase - purple - super pretty & scarce
- 72. Garden Path Variant 6" plate - white - pretty, scarce
- 73. M'BURG HOBNAIL 4 PC. TABLE SET - BLUE - EXTREMELY RARE SET & DOUBLE RARE IN BLUE, BASE OF BUTTER IS AMETHYST & ALSO CRACKED, SPOONER IS CRACKED

- 1150 74. M'burg Hobnail butter dish, cvd sugar & creamer - marigold - very rare set
- 600 75. M'burg Hobnail butter dish, cvd sugar & creamer - amethyst - very rare, handle cracked on sugar, you just don't find these table sets everyday
- 110 76. Daisy Cut bell - marigold
- 3500 77. FARMYARD 8 RUFFLED BOWL - PURPLE - PRETTY, HIGHLY DESIRABLE
- 195 78. Beaded Shell mug - white - rare, very desirable in white & pretty
- 300 79. M'BURG HOBSTAR & FEATHER BUTTER DISH - AMETHYST - COVERED IN RADIUM BLUE IRID., 1 OF 2 THAT I KNOW OF, TIP OF KNOB HAS BEEN POLISHED
- 1100 80. M'BURG HOBSTAR & FEATHER CVD SUGAR BOWL - AMETHYST - AGAIN, COVERED IN RADIUM BLUE IRID., NOT SURE IF I'VE SEEN ANOTHER, FABULOUS PIECE
- 350 81. M'burg Hobstar & Feather spooner - amethyst - covered in radium blue irid., only one I've heard of
- 900 82. M'burg Hobstar & Feather spooner - green - has radium blue irid., unbelievable
- 950 83. M'burg Hobstar & Feather creamer - green - radium blue irid., another rarity
- 700 84. M'burg Hobstar & Feather spooner - marigold - radium & super, another rarity
- 1250 85. Captive Rose 9" plate - green - a beauty!
- 225 86. Captive Rose 9" plate - amethyst - very rare color
- 200 87. Captive Rose 9" plate - blue - scarce, nice
- 95 88. Inverted Strawberry powder jar - marigold - scarce, nice
- 850 89. Blackberry Block tumbler - white - this is a rare tumbler plus nice - 2800?
- 500 90. Inverted Strawberry 4 pc. table set - marigold - rare set, minor nick on edge of butter dish base
- 475 91. Fisherman's mug - peach opal - rare mug, nice
- 160 92. Tree of Life salt & pepper shakers - smoke - rare color, desirable
- 575 93. POND LILY BONBON - CELESTE BLUE - THIS IS A REALLY SWEET PIECE! KILLER IRID., 1 OF 2 THAT WE KNOW OF, FABULOUS IN ANY COLLECTION
- 400 94. Inverted Feather wine glass - marigold - very rare item, nice
- 325 95. Poppy Show 9" plate - ice blue - large bubble inside glass along edge
- 225 96. Poppy Show 9" plate - white - pretty
- 235 97. Grape & Cable cracker jar - purple
- 375 98. Imperial Glass Company paperweight - purple - couple nicks around bottom edge, common for these, nice
- 185 99. Mulberry Bush 7 1/4" ftd vase - marigold - neat vase by Riihimaki
- 190 100. God & Home tumbler - blue - scarce, nice
- 350 101. Wreathed Cherry 4 pc. table set - white w/red cherries - rare set, two large chips on base of sugar
- 675 102. Wreathed Cherry 4 pc. table set - purple - also scarce set
- 150 103. Wreathed Cherry 4 pc. table set - marigold - scarce
- 750 104. Lotus Land bonbon - purple - rare bonbon, not many known
- 725 105. Dandelion Knights Templar mug - ice blue - scarce
- 120 106. Dandelion Knight's Templar mug - marigold - nice*
- 375 107. Dandelion mug - aqua opal
- 50 108. Dandelion mug - blue - scarce color, minor pinpoint on base
- 70 109. Dandelion mug - purple - scarce color
- 350 110. INVERTED THISTLE BANANA BOAT SHAPED FTD WHIMSEY - GREEN - RARE WHIMSICAL PIECE, ONLY ONE I'VE SEEN, SIGNED NEAR CUT
- 375 111. Pony 9" plate - marigold - this is an OLD version, extremely rare, only a few known, pretty!
- 450 112. M'burg Country Kitchen spooner - green - fantastic blue radium irid., Wow!
- 450 113. M'burg Country Kitchen creamer - green - fantastic blue radium irid., rare
- 460 114. M'burg Country Kitchen 4 pc. table set - amethyst - rare set, spooner has repaired chip on base, no sugar lid
- 650 115. M'burg Country Kitchen 4 pc. table set - marigold - rare set, minor chips on base of sugar
- 250 116. Stippled Rays sugar bowl - red - rare color, nice
- 725 117. SUPERB DRAPE VASE - AQUA OPAL - AN EXTREME RARITY, SELDOM SOLD & SUPER, A GREAT OPPORTUNITY
- 225 118. Strawberry bonbon - lime green opal - rare color, nice
- 600 119. Coin Spot ruffled compote - celeste blue - super stretchy irid., from Capps auction
- 150 120. Vintage 6" plate - amethyst - very rare plate, only a few known
- 475 121. Fanciful 3 in 1 edge bowl - purple - lots of gold irid.
- 600 122. Cone & Tie tumbler - purple - tiny pinpoint on top edge, super pretty, very rare tumbler
- 200 123. SWEETHEART CRACKER JAR - GREEN - 1 OF 2 KNOWN, EXTREMELY DESIRABLE, ROUGHNESS ON INNER RIM OF LID
- 350 124. M'burg Perfection tumbler - green - slight roughness on top rim, rare - 700
- 275 125. M'burg Perfection tumbler - amethyst - scarce, nice
- 180 126. Butterfly bonbon w/ribbed back - green - rare color for these, small chip on base filled with epoxy, not many known
- 300 127. Butterfly bonbon w/ribbed back - blue - scarce color, nice
- 100 128. Butterfly bonbon w/ribbed back - purple - scarce, nice
- 350 129. Butterfly bonbon w/ribbed back - marigold - one of the harder colors to get, pretty
- 350 130. Butterfly bonbon w/plain back - smoke - very rare in this color
- 525 131. Cosmos & Cane 4 pc. table set - white - scarce set w/ pretty irid.
- 250 132. Cosmos & Cane 4 pc. table set - honey amber - a super set
- 220 133. Fishscale & Beads 7" plate - white - pretty
- 3100 134. LEAF CHAIN IC SHAPED BOWL - CELESTE BLUE - EXTREMELY RARE BOWL, NOT MANY KNOWN
- 275 135. Orange Tree fruit bowl - amethyst - rare color for these, nice
- 750 136. M'burg Hobnail spittoon - green - very rare spittoon, minor heat check in base
- 325 137. M'burg Hobnail spittoon - marigold - scarce & nice
- 200 138. Maple Leaf 4 pc. table set - purple
- 200 139. Maple Leaf 4 pc. table set - blue
- 750 140. Wide Panel epergne - purple - very rare, slight polishing around center hole
- 450 141. Wide Panel epergne - green - very rare
- 150 142. Wide Panel epergne - marigold - nicks around lily holes
- 350 143. Oriental Poppy tumbler - ice green - scarce color
- 140 144. Oriental Poppy tumbler - blue - nice, rare color
- 1100 145. M'burg Hobstar & Feather giant rose bowl - green - very rare, highly desirable
- 450 146. Pair of Chesterfield 9" candlesticks - red - scarce, nice
- 140 147. Field Thistle 4 pc. table set - marigold - scarce
- 2700 148. WISTERIA WHIMSEY BANK - WHITE - ONE OF THE MOST UNUSUAL NORTHWOOD WHIMSEY'S OUT THERE, HAS CHIP ON TOP EDGE OF BASE - WHO CARES! MADE FROM TUMBLER, WOW!
- 165 149. M'burg Leaf & Little Flowers sherbet shaped compote - amethyst - radium
- 170 150. M'burg Leaf & Little Flowers sherbet shaped compote - marigold - satin
- 400 151. Stippled Grape & Cable Variant 9" plate w/ribbed back - blue - very rare color, highly desirable
- 350 152. Old Rose Distilling Stippled Grape & Cable Variant 9" plate w/ribbed back - green - very pretty for these
- 65 153. Toltec butter dish - amethyst - very rare, lightly iridized
- 350 154. N's Corn vase w/stalk base - green - scarce

- 800 155. M'burg Many Stars ruffled bowl - blue - has 6 point star, extremely rare, satin & pretty, large polished chip on base
- 295 156. M'burg Bernheimer Brothers ruffled bowl - blue - rare bowl, has iridescence missing in center of bowl
157. Pair of Moonprint candlesticks - marigold - very scarce
158. Moonprint 8" ftd bowl - marigold - unusual
159. Moonprint butter dish, creamer & open sugar - marigold
160. Moonprint 5 1/2" large cvd bonbonierre - marigold - scarce
161. Moonprint cvd rectangular cheese keeper - marigold - unusual piece
162. Moonprint wines (3) - marigold - all to go
163. Moonprint 8 1/4" vase - marigold - nice
164. Moonprint 8 pc. cordial set - marigold - bottle w/stopper, 6 wines & under plate
165. Moonprint 9" trumpet shaped ftd vase - marigold
166. Moonprint jar w/lid in pickle castor frame - marigold - minor chip inside lid
167. Homestead chop plate - purple - very pretty
168. Four Seventy Four 3" cordial - marigold - cute little piece, has minor pinpoint on base
169. Inverted Feather 4 pc. table set - amethyst - very rare set, highly desirable, butter bottom has chip on outside edge & inner rim, sugar lid has pinpoint
170. Inverted Feather cvd sugar, creamer & spooner - marigold
171. Daisy bonbon - blue - very scarce bonbon & nice
172. Peacock & Grape 9" plate - green - very rare color, not many around
173. Cut Ovals 8 1/2" candlesticks - celeste blue - very rare, nice
174. Cut Ovals 8 1/2" candlesticks - marigold - also hard to find
- 1700 175. STIPPLED THREE FRUITS RUFFLED BOWL W/ RIBBED BACK - APPLE GREEN - EXTREMELY RARE BOWL, IT'S THAT ODD COLOR BETWEEN GREEN & ICE GREEN, NEAT!
- 350 176. Texas shot glass or giant tumbler - blue - rare color, pretty
- 750 177. Grape & Cable butter dish, spooner & base to sugar - ice green - RARE, not many opportunities for these pieces
- 475 178. Grape & Cable 4 pc. table set - green - a super pretty set, hard to find
- 170 179. Grape & Cable 4 pc. table set - purple - nice set, mold roughness on base of creamer
- 950 180. Butterfly & Tulip square shaped bowl - purple - rare & highly desirable, a Carnival Classic
- 195 181. Asters 4" miniature rose bowl - marigold - cute little thing, rare
- 475 182. Persian Medallion bonbon - celeste blue - rare color, highly desirable & nice. Flake on edge
- 375 183. Persian Medallion bonbon - amberina red - nice
- 9750 184. M'BURG BIG FISH DEEP CRIMPED EDGE BOWL - GREEN - RADIUM & UNBELIEVABLE, THIS THING IS COOL! HAS LARGE CHIP ON BASE
- 300 185. Basketweave Open Edge IC shaped small size bowl - celeste blue - scarce in this shape
- 375 186. Horse Medallion ruffled bowl - amberina - a neat color, scarce
- 105 187. Prayer Rug bonbon - marigold on custard - very scarce & nice for these
- 2900 188. M'burg Deep Grape square shaped compote - marigold - satin, super, RARE
- 205 189. Acorn deep round bowl - red - brick red color, scarce
- 600 190. Singing Birds mug - aqua opal - very scarce, nice
- 170 191. Singing Birds mug - white - scarce, nice
- 500 192. Octagon 4 pc. table set - purple - fantastic irid. on this super rare set, missing sugar bowl lid
- 375 193. Octagon 4 pc. table set - green - also hard to find set, sugar base & butter dish base are more an aqua color, still sold as set
- 1250 194. Holly 3 in 1 edge bowl - marigold on moonstone - extremely rare in 3 in 1 edge, can't say I've sold another, nice
- 150 195. Flowers & Frames dome ftd ruffled bowl - purple - electric highlights
- 4000 196. DANCE OF THE VEILS RUFFLED TOP VASE - MARIGOLD - VERY RARE, HIGHLY DESIRABLE, HAS MINOR NICK ON FLAT OF BASE, WHO CARES ON A PIECE LIKE THIS, VERY FEW AROUND
- 450 197. Inverted Strawberry breakfast set - amethyst - scarce, nice
- 375 198. Wild Rose syrup - marigold - marigold - scarce, this is a very nice example
- 2300 199. M'BURG MANY STARS TRI-CORNERED BOWL - AMETHYST - RADIUM, EXTREMELY RARE, ONLY A FEW KNOWN, NICE
- 225 200. Miniature Blackberry ftd plate - blue - rare, couple of minor pinpoints on base
- 550 201. M'burg Night Stars bonbon - green - radium, super, scarce
- 275 202. Circle Scroll butter dish, creamer & spooner - marigold - butter dish is fantastic, sold as set, scarce
- 225 203. Embroidered Mums ruffled bowl w/ribbed back - blue - nice, shallow chip on flat of base, minor
- 750 204. Covered Turtle - ice green - has black head, feet & tail, very unusual piece, rare
- 850 205. Covered Turtle w/snail - marigold - has snail on top of shell, neat novelty piece
- 350 206. M'burg Roses & Fruits bonbon - green - satin, pretty
- 85 207. M'burg Roses & Fruits bonbon - amethyst - radium, rare, missing irid. in center of bowl
- 600 208. M'burg Roses & Fruits bonbon - marigold - satin, maybe the rarest color
- 230 209. Peacocks 9" plate w/plain back - green - lots of gold irid.
- 350 210. Peacocks 9" plate w/ribbed back - marigold - pretty
- 190 211. Peacocks 9" plate w/ribbed back - ice green
- 725 212. M'burg Blackberry Wreath 10" IC shaped bowl - blue - very rare bowl & nice, satin, not many opportunities to buy this bowl
- 180 213. Wild Berry covered powder jar - marigold - rare w/lid
- 2500 214. Vintage 9" IC shaped bowl - celeste blue - super pretty, very rare!
- 200 215. Vintage fernery - red - rare color
- 650 216. Pair of Inverted Strawberry candlesticks - green - very rare set, most are found with damage, this set looks perfect
- 250 217. Pair of Inverted Strawberry candlesticks - marigold - one has several nicks around base, other has minor nick on base, typical for these
- 2200 218. M'BURG UNLETTERED COURTHOUSE RUFFLED BOWL - AMETHYST - RADIUM & NICE, EXTREMELY RARE & HIGHLY DESIRABLE
- 110 219. Star & File cordial - marigold - extremely rare cordial, nice
- 1300 220. Chesterfield tumbler - red - very rare tumbler & nice
- 110 221. Brooklyn Bridge 10 ruffled bowl - marigold - nice
- 210 222. Orange Tree shaving mug - red - hard to find in the shaving size
- 500 223. Bird in Flight miniature - marigold - very rare miniature
- 475 224. Peach 4 pc. table set - white - scarce, nice, has some gold on rope & fruit
- 450 225. Daisy & Drape flared out vase - aqua opal - butterscotch, nice
- 475 226. M'burg Poppy ruffled compote - amethyst - radium, a pretty example
- 230 227. Diamond Fountain Cruet - marigold - believed to be by Higbee, nice novelty piece
- 700 228. M'burg Fleur De Lis dome ftd deep round crimped edge bowl - green - radium, extremely rare shape, some minor nicks on saw tooth base, nice
- 350 229. Panther ftd ruffled sauce - red - scarce, very nice
- 170 230. Chrysanthemum lg size IC shaped ftd bowl - green - rare color, pretty
- 1400 231. M'BURG WILD ROSE LAMP W/PATTERN ON UNDERSIDE ONLY - MARIGOLD - FONT IS ALSO IRIDIZED, HAS GOOFUS DECORATION ON FLOWERS, VERY RARE & UNUSUAL, 8 1/2" TALL, BASE IS 5 1/2"
- 275 232. Wishbone & Spades 6" plate - purple - pretty





73



59



74



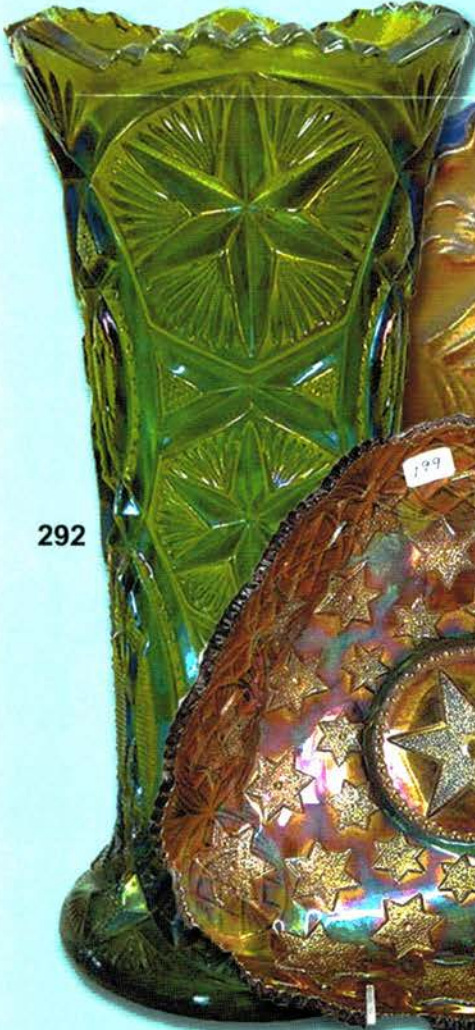
49



177



39



292



104



293



199



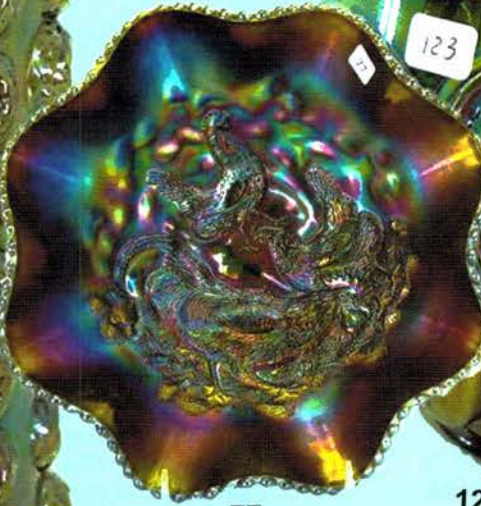
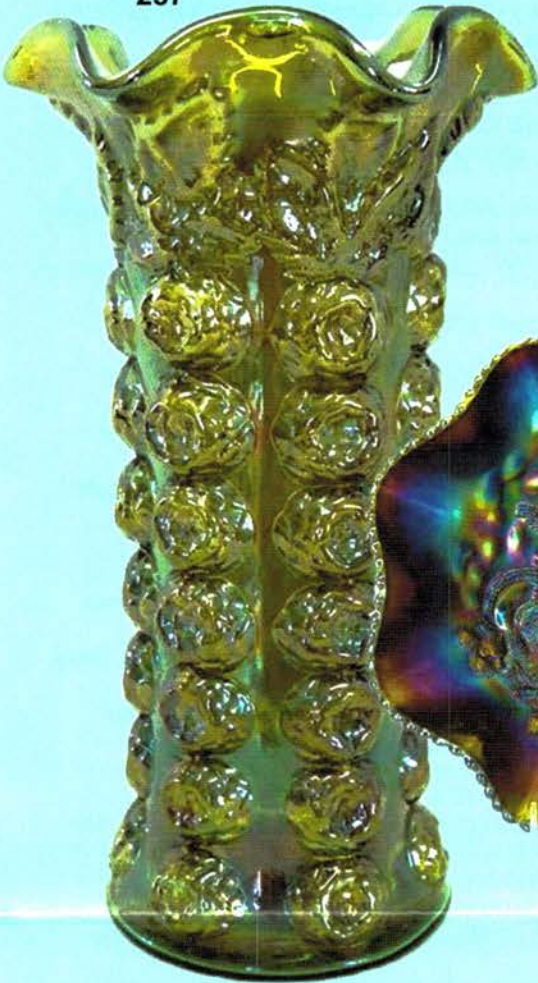
246



104

41

257



123

188

77

123



336



328



254



82

82



214



273

- 105 233. Raspberry tumbler - ice blue - pretty iridescence
- 850 234. Double Stemmed Rose dome ftd ruffled bowl - celeste blue - great stretchy irid., nice
- 360 235. Dog Face ashtray - marigold - neat novelty
- 150 236. Fenton Peacock at Urn ruffled bowl - amethyst - super pretty w/great irid.
- 550 237. Venetian giant rose bowl - green - rare & desirable
- 160 238. Mirrored Lotus rose bowl - white - rare, nice
- 150 239. Tornado 5" vase w/green tornados - marigold - very short size for these, rare & desirable, European
- 1000 240. M'burg Hobnail tumbler - blue - very rare tumbler, nice
- 275 241. Grapevine Lattice 7" plate - purple - super pretty
- 1100 242. Birmingham Age Herald IC shaped bowl - amethyst - rare, nice, not often sold
- 550 243. Birmingham Age Herald 9" plate - amethyst - very rare plate, desirable, has iridescent spotting on face
- 1400 244. Columbia ruffled compote - purple - spectacular
- 400 245. Springtime 4 pc. table set - purple - scarce, chip on base of creamer
- 800 246. Covered Frog - ice green - rare novelty
- 100 247. Concord ruffled bowl - amethyst - scarce, nice
- 1500 248. M'burg Detroit 1910 Elk's ruffled bowl - amethyst - radium & nice, very rare, highly desirable
- 60 249. N's Drapery spooner - white - extremely rare, one of just a few known, pretty irid., nick on top edge of base
- 700 250. Little Flowers 10" ruffled bowl - amberina red - very scarce bowl & nice
- 500 251. Stippled Rays IC shaped compote - celeste blue - rare color, nice
- 450 252. Forks cracker jar, no lid-green - Cambridge, only one I know of
- 400 253. S-Repeat tumbler - marigold - dark, nice, rare & desirable
- 1900 254. 1911 Atlantic City Elk's bell - blue - very rare & highly desirable, nice
- 150 255. M'burg Peacock 6" plate - amethyst - has silver & gold irid., satin
- 80 256. Club shaped bridge dish - marigold - signed Pres Cut
- 2700 257. M'BURG ROSE COLUMNS VASE - GREEN - VERY RARE, NICE, A M'BURG CLASSIC
- 300 258. Six Petal ruffled bowl - purple - super pretty
- 160 259. Beaded Shell butter dish, spooner & sugar - amethyst - rare set
- 200 260. Beaded Shell 4 pc. table set-marigold-rare to find complete set
- 400 261. Rose Show Variant ruffled bowl - renninger blue - very rare bowl, nice
262. Arched Flute toothpick - Wisteria - rare
263. M'burg Trout & Fly square shaped bowl - marigold - satin, very scarce
264. Pair of Double Scroll candlesticks - red - scarce
265. INVERTED THISTLE FTD NUT BOWL - GREEN - VERY RARE PIECE, CAMBRIDGE COLLECTOR'S DREAM
266. Checkerboard tumbler - marigold - scarce
267. Checkerboard tumbler - amethyst - nice
268. INVERTED STRAWBERRY CHALICE SHAPED COMPOTE - GREEN - EXTREMELY RARE & HIGHLY DESIRABLE, A GOODIE!
269. Buzz Saw small size cruet - green - scarce
270. Buzz saw small size stopper for cruet - marigold - VERY rare, not many marigold complete known, anybody have the bottom?
271. Buzz Saw large size cruet, no stopper - marigold
272. Carnival Hobstar 4 pc. table set - purple - minor pinpoint on knob of butter, minor roughness on creamer, no lid for sugar
273. DIAMOND RIB RUFFLED JARDINIÈRE - AMETHYST - EXTREMELY RARE WHIMSEY ITEM, HAS CRACK AROUND BASE & CHIP ON TOP EDGE, NEAT WHIMSEY, IS YOURS PERFECT?
274. Double Loop creamer & open sugar - blue - creamer is super rare to find
275. Poppy Show ruffled bowl - lime green - very rare color, has nick on poppy
276. Poppy Show ruffled bowl - marigold - scarce
277. Classic Arts 7 1/2" vase - marigold - scarce
278. Colonial Lady vase - purple - rare, desirable
279. Sitting Dog miniature figurine - marigold - cute, small chip on ear
280. Orange Tree ruffled bowl - red - cherry red color & pretty, center of bowl missing irid., not very noticeable
281. Luster Rose 4 pc. table set - amber - minor pinpoint on point of spooner
282. Luster Rose 4 pc. table set - purple - scarce, large chip on knob of sugar lid
283. Miniature hand cart novelty - marigold - rare, has initials "DJA" on front of cart
284. Rose Show Variant 9" plate - marigold - scarce, highly desirable
285. Butterfly & Berry whimsey rose bowl - marigold - made from ftd berry bowl, cute whimsey, one foot has been cracked and glued on, still fantastic piece
286. Leaf Chain 9" plate - white - nice
287. Cambridge Near Cut decanter, no stopper - green - rare piece, nice
288. M'burg Nesting Swan ruffled bowl - amethyst - radium, pretty
289. M'burg Nesting Swan ruffled bowl - green - satin
290. Grape & Gothic Arches 4 pc. table set - green - scarce color, nice set
291. Peacock at the Fountain tumbler - ice blue
292. M'BURG OHIO STAR VASE - GREEN - SUPER PRETTY, ANOTHER FABULOUS M'BURG VASE, NO HARM PINPOINT ON FLAT OF BASE
293. M'BURG OHIO STAR VASE - MARIGOLD - VERY PRETTY EXAMPLE, RARE
294. Field Thistle 5" round sauce - celeste blue - super rare, NEAT!
295. Peacock & Grape IC shaped bowl - red - silvery, rare
296. Holly & Berry spooner - marigold - rare piece, not many around
297. M'burg Hobnail Swirl spittoon-amethyst - neat shape, nice
298. Heavy Grape chop plate - amber - very pretty, scarce color
299. Cherry & Cable 4 pc. table set - marigold - rare set that is not often sold
300. M'burg Tracery bonbon - amethyst - very pretty satin example, I don't remember seeing one this nice
301. M'burg Hobnail Swirl rose bowl - marigold - scarce
302. Utah Liquors advertising double handgrip plate - amethyst - rare, nice
303. M'burg Hanging Cherries tumbler w/flat bottom - green - scarce
304. M'burg Trout & Fly 3 in 1 edge bowl - lavender - rare color
305. Crucifix candlestick - marigold - scarce
306. Stippled Basket of Roses bonbon - purple - scarce pattern
307. Rose Show 9" plate - marigold - lots of pink & yellow irid.
308. Zippered Loop 8" lamp - smoke - 4 5/8" base, scarce
309. Leaf Tiers 4 pc. table set - marigold - nice set
310. Holly goblet shaped compote - red - scarce
311. Imperial Grape whimsey spittoon - green - only a few known, minor pinpoint on base
312. Grape Arbor tumbler - ice green - scarce color → 85-100
313. Grape Arbor tumbler - blue - scarce color, pretty
314. DIAMOND RIB JARDINIÈRE - GREEN - VERY RARE & DESIRABLE
315. Beetle Ashtray - blue - rare novelty, very desirable
316. M'burg Leaf & Little Flowers ruffled compote - marigold - radium

317. Narcissus & Ribbon wine jug - marigold - very rare piece, seldom sold
318. M'burg Courthouse IC shaped bowl-amethyst-radium, nice
319. Butterfly & Berry 4 pc. table set - blue - nick on base of spooner, chip on inside rim of butter lid, scarce set
320. Buddha - marigold - two large bursts in base
321. Star of David ruffled bowl - purple - nice
322. Peter Rabbit ruffled bowl - green - nice, RARE!
323. Cosmos & Cane tumbler - honey amber - has JR Millner Co. advertising in base
324. 1910 Detroit Elks ruffled bowl - amethyst - scarce, nice
325. Fashion breakfast set - purple - rare set, sugar is super, creamer silver
326. Waterlily whimsey hatshape - marigold - made from tumbler
327. M'burg Trout & Fly IC shaped bowl - green - radium, nice
328. Miniature Cow figurine - marigold - great miniature!
329. Chesterfield large compote - red - scarce
330. Carnival Hobstar pickle castor - marigold - scarce
331. Ribbed Tornado vase-amethyst-very hard vase to find, nice
332. File 4 pc. table set - marigold - scarce set
333. Embroidered Mums bonbon-white-scarce & desirable, nice
334. Shell 9" plate - marigold - scarce, pretty
335. Skater's Shoe match holder - marigold - another cute miniature
336. TOWN PUMP - GREEN - RARE COLOR, NICE
337. Town Pump - marigold - dark & beautiful for this rare color
338. Pair of Mae West candlesticks - red - scarce
339. M'burg Strawberry Wreath 10" crimped edge ruffled bowl - green - radium, nice
340. Peach spooner - marigold - extremely rare spooner, has minor nick on top edge above bottom rope, dark & nice
341. Dozen Roses ftd round bowl - purple - minor nick on one foot, scarce
342. Vintage powder jar - white - rare color, minor burst on rim of lid
343. Lotus & Grape 9" plate - green - rare & desirable
344. Waterlily ftd ruffled sauce - red - scarce, pretty
345. Sailboat 6" plate - marigold - dark, nice, scarce
346. Sterling Furniture advertising ruffled bowl - amethyst - hard advertising to find
347. Daisy Wreath ruffled bowl - blue opal - scarce
348. Acorn Burrs 4 pc. table set - purple - sugar base has minor nick, several nicks on acorns on spooner
349. Blackberry Open Edge ruffled basket - celeste blue - very pretty, some webbing filled in with glass
350. Coral 9" plate - marigold - scarce plate
351. Lily of the Valley tumbler - marigold - dark, nice
352. Zippered Heart Giant rose bowl - green - rare piece, desirable
353. Octagon cordial - marigold - very scarce
354. N's Peacock at Urn master IC bowl - purple - nice
355. Kittens toothpick - blue - scarce color
356. Chrysanthemum chop plate - marigold - has nice stretchy irid.
357. Basketweave Open Edge lg size basket - celeste blue - scarce
358. WREATHED CHERRY SPITTOON WHIMSEY - MARIGOLD - ONLY ONE KNOWN, MADE FROM SPOONER, AGE?
359. Stag & Holly giant rose bowl - light smoke - has marigold overlay, pretty, scarce
360. Fentonia 4 pc. table set - blue - rare set, minor pinpoint on claw of spooner & creamer
361. Rose Bouquet bonbon - white - scarce
362. Heavy Grape 8" ruffled bowl - blue - extremely rare color & pretty
363. Inverted Feather tumbler - green - scarce, nice
364. Diamond Fan child's butter dish - marigold - cute mini!
365. Grape & Cable ftd ruffled bowl - celeste blue - super pretty stretchy irid., beautiful & rare
366. M'burg Strawberry Wreath 8" square shaped bowl - amethyst - radium, super
367. Inverted Strawberry spittoon - green - scarce, nice
368. Store display perfume - marigold - etched, unusual novelty
369. Lattice & Poinsettia ftd ruffled bowl w/ribbed back - purple - scarce
370. Cosmos & Cane breakfast sugar - honey amber - different from the table set, neat
371. Fenton's Grape & Cable 7" deep round bowl - red - scarce
372. N's Two Fruits or Cherry & Plum sugar bowl base - blue - one of 2 or 3 pieces known in this pattern, pretty
373. M'burg Blackberry Wreath 10" ruffled bowl - blue - satin, nice, rare color, couple of nicks on base
374. Flute & Cane large size tumbler - marigold- very rare tumbler
375. M'burg Elk's paperweight - amethyst - one shallow chip on flat of vase, very typical for this rare piece, pretty
376. Zippered Panel child's butter dish - marigold - another cute & rare miniature
377. Dreibus Parfait Sweets advertising handgrip plate - purple - scarce, nice
378. Star Burst spittoon - marigold - rare shape, nice
379. Stippled Grape & Cable bonbon - aqua opal - super pretty & very rare in aqua opal, unfortunately has crack in handle
380. Illinois Soldiers & Sailors Home 7" plate - marigold - highly desirable, nice
381. Good Luck 9" plate w/BW back - green - scarce
382. Fruits & Flowers bonbon - ice blue - scarce, nice
383. M'burg Primrose ruffled bowl - amethyst - fabulous radium irid., WOW!
384. Twigs miniature vase w/tri-cornered top - purple - scarce
385. Cosmos & Cane rose bowl - honey amber-very scarce, nice
386. KITTENS SPITTOON - MARIGOLD - A LITTLE GEM!
387. Grape & Cable powder jar bottom - ice green - no lid but rare
388. LOGANBERRY VASE W/WHIMSIED SMOOTH TOP - PURPLE - HAS KILLER IRID.!
389. LOGANBERRY VASE W/WHIMSIED BALL SHAPED TOP - GREEN - COOL PIECE!
390. Loganberry vase - amber - very pretty!
391. Lot of Misc. Carnival Glass
392. Lot of Misc. Carnival Glass
393. Lot of Misc. Carnival Glass
394. Lot of Misc. Carnival Glass
395. Lot of Misc. Carnival Glass
396. Lot of Misc. Carnival Glass
397. Lot of Misc. Carnival Glass
398. Lot of Misc. Carnival Glass
399. Lot of Misc. Carnival Glass
400. Lot of Misc. Carnival Glass

Seeck Auctions
PO Box 377
Mason City, Iowa
50402

Presorted
First Class Mail
U.S. Postage
Paid
Mail Expeditors



2012 Auction
Carnival Glass
Sat., July 14, 9:30 a.m.
Springfield, Illinois

T5 P1 33
LEE MARKLEY
BOX 306
MENTONE IN 46539-0306

