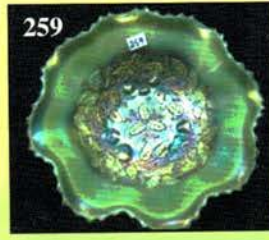
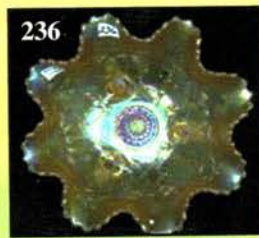
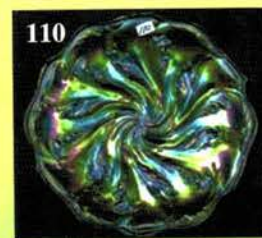
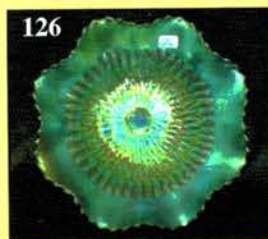
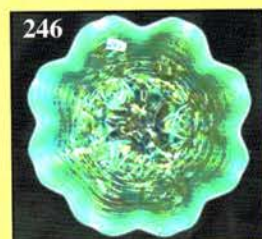
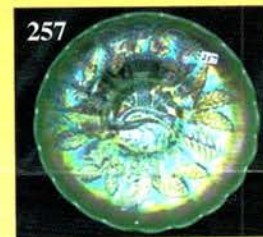
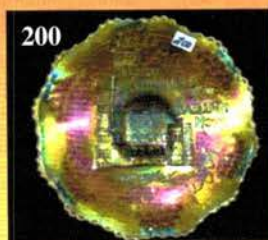


Carnival Glass Auction

Saturday, June 14, 2008 9:00 a.m. Sharp

Friday Preview: June 13 - 12 Noon-5 p.m. & 7:30 a.m. Auction Day

Slaughter and McNau Collections
Fantastic Color and Quality



Held By the Mickey Reichel Antique & Auction L.C.

Office: 660-882-5292 • Home: 660-882-5283

New Web Site: www.AWK-SHN.com

E-mail: mreichel@AWK-SHN.com

2nd E-mail: MickeyReichel@SBCGlobal.net

Held Inside the Mickey Reichel Auction Center

1 Mile North of I-70 on Hwy. 5, Exit 101, Boonville, Missouri • 20 Miles West of Columbia, MO on I-70



Preview Friday 12 p.m. - 5 p.m. and 7:30 a.m. - 9:00 a.m. Day of Auction

TERMS: Cash or Good Check, VISA and MasterCard accepted.



4% Clerking Fee on all purchases except for payment of cash or check. Proper I.D. required.

WEB SITE: www.AWK-SHN.com

ABSENTEE BID POLICY:

WRITE IN BIDS: If you are unable to attend the auction, we will be happy to accept absentee bids which must be received by THURSDAY, JUNE 12, 2008. Don't Delay. **E-Mail: mreichel@AWK-SHN.com - 2nd E-mail: MickeyReichel@SBCGlobal.net**

DIRECT ALL MAIL TO: 18350 Hunters Ridge Ct., Boonville, MO 65233-2971

PLEASE NOTE: There is a **\$6 handling charge for each successful bid which will be added to the selling price** for all write-in bids. This is in addition to the cost of postage, insurance and packing. Your write-in bid will be entered just as if you are present and bidding. **Successful bidders will be notified in 1 to 3 days by the auctioneer (so be sure to include your phone number).** Direct mail bids to Auctioneer Mickey Reichel, 18350 Hunters Ridge Ct., Boonville, MO 65233-2971. Terms: Cash or Check accepted with proper I.D. and Social Security Number and References. Announcements made day of the auction supercede all printed material. Not Responsible for Accidents or Sold Items. (Phone bids welcome **Before Auction Begins.**)

No return on any items once they leave the Auction Center (No Exceptions).****

Call for additional information: 660-882-5292 days or 660-882-5283 evenings before 9:00 p.m.


FAX: 660-882-5292 (evening hours start FAX transmission after beep)

MAIL BIDS: Items are bid on in perfect condition with average or above iridescence OR as listed in the brochures. Bids will not be carried out when damage on an item has been found during the auction.

PEOPLE PRESENT AT AUCTION ARE RESPONSIBLE FOR FINDING ANY PINHEADS, WEAR, SPOTTINESS, MANUFACTURER'S DEFECTS OR ANY OTHER MINOR FLAWS, ETC. *****

NOTE: Read each line, as we have accentuated the type of no particular piece, all are special.

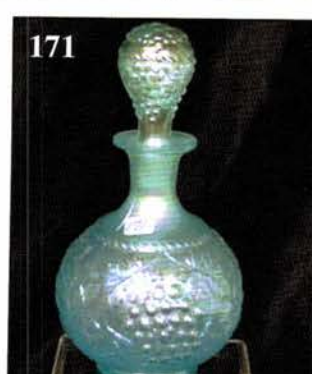
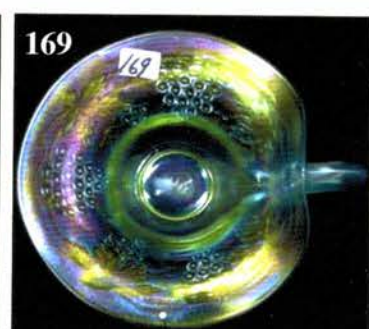
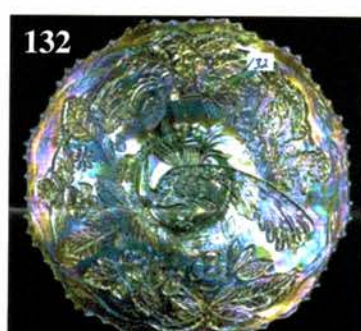
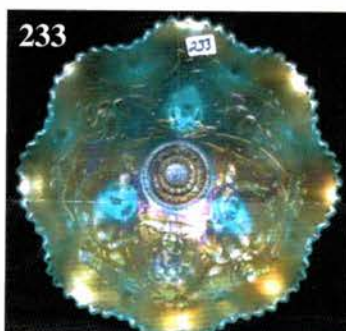
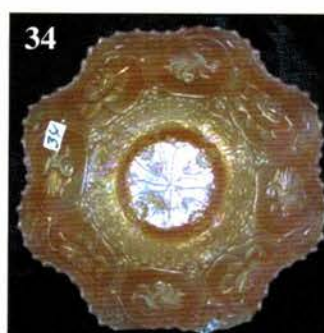
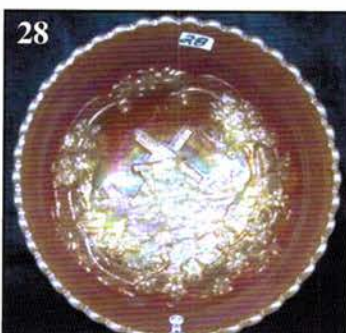
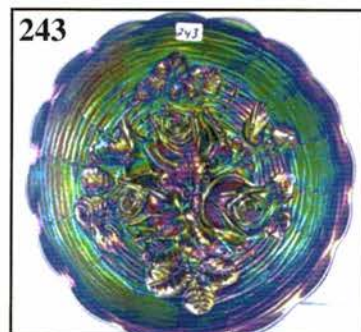
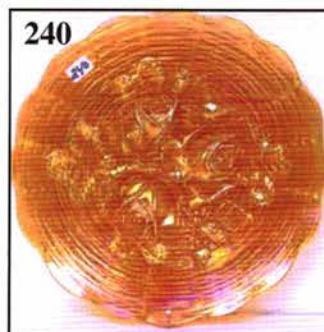
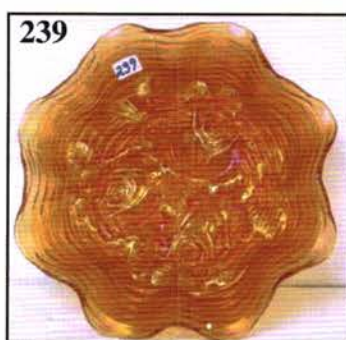
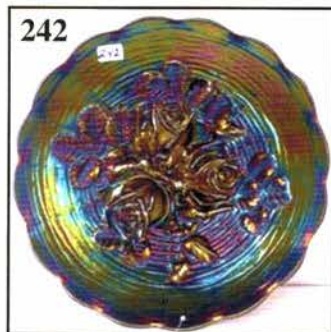
Make Reservations EARLY at one of these local motels:

Mention: Mickey Reichel Auction when calling the  **Isle of Capri Casino Hotel: 660-882-1200**
Days Inn: 660-882-8624 • Comfort Inn: 660-882-5317 • Super 8: 660-882-2900 • Holiday Inn: 660-882-6882

Auction Consists of Rarity, Great Irid. and Variety

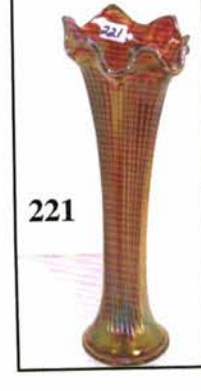
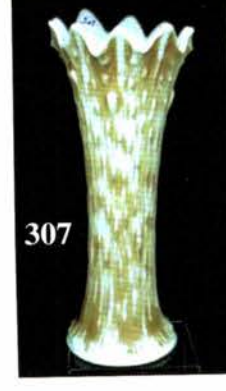
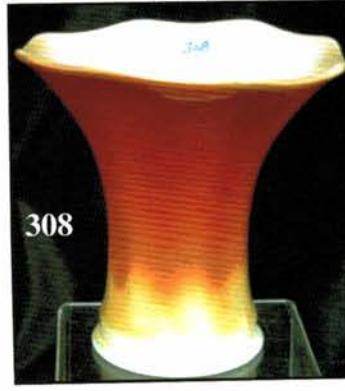
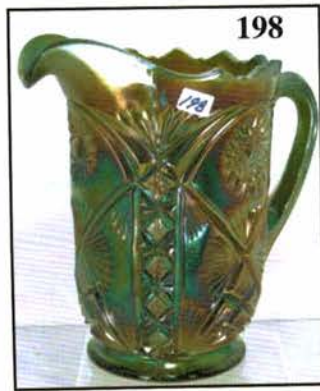
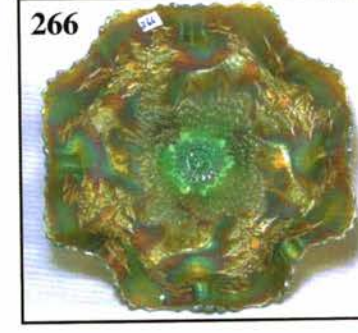
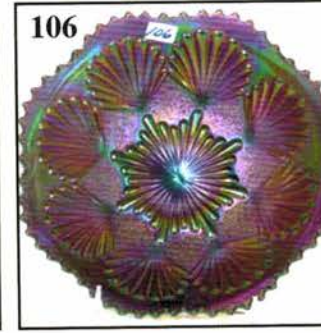
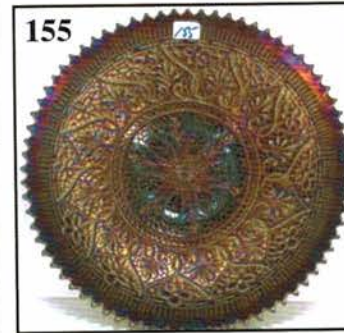
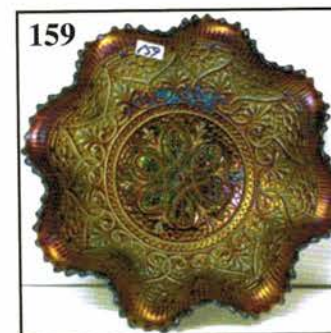
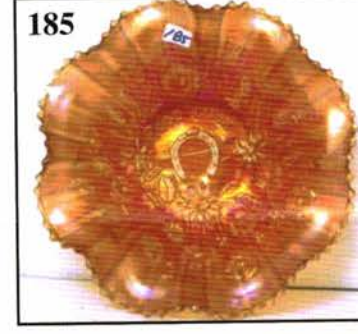
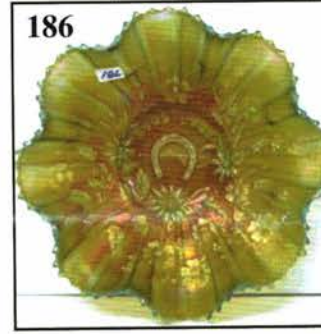
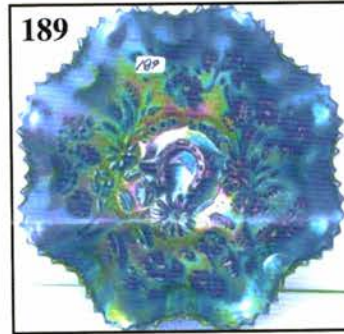
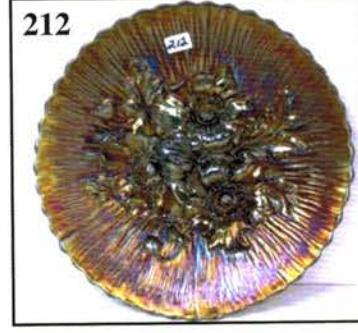
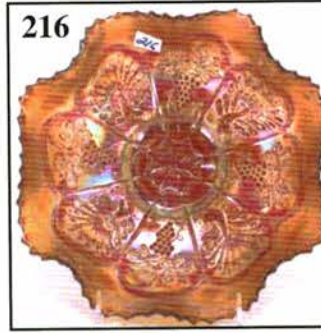
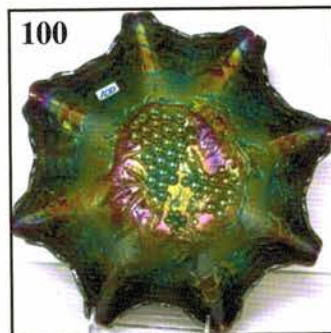
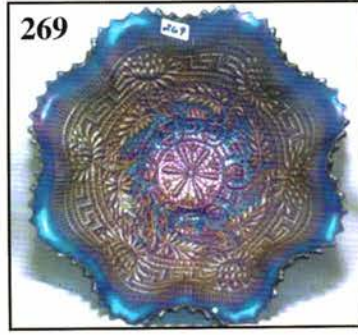
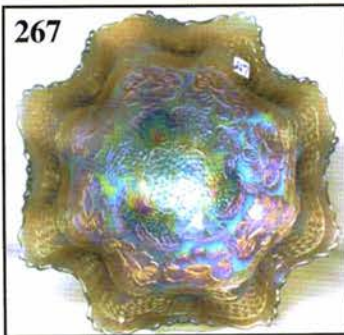
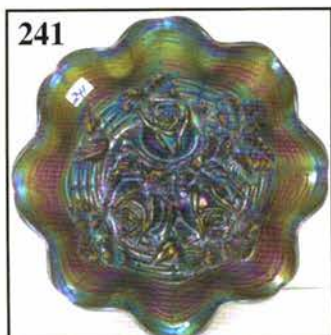
- | | |
|--|---|
| _____ 1. Ice B--Brocaded Acorns eight-sided, 6", two handled dish | _____ 11. W--Leaf Columns 6 1/4" squatty vase--base chip |
| _____ 2. Amber--Fenton Holly 8 1/2", ICS bowl | _____ 12. G-Mlbg Sunflower pin tray, bruise/flaw on rim |
| _____ 3. M--5 1/2" European milk pitcher--Pattern? | _____ 13. Ice G--Premium 8 3/4" candlesticks, pair--one with crack |
| _____ 4. Vas--Blackberry Open Edge 6 1/2" ruffled hat | _____ 14. Ice G--Bud vase, 8" tall--tip chip |
| _____ 5. Vas--Blackberry Spray 6" ruffled hat | _____ 15. M--European 10 1/4" handled dresser dish/tray |
| _____ 6. Electric P--Imp. Grape wine decanter--Beautiful | _____ 16. P--N Good Luck 9" Plate, BW ext. |
| _____ 7. Smoke--Imp Smooth Panels 8" vase--5 3/4" opening--radium deluxe | _____ 17. W--Dugan Question Marks stemmed bonbon |
| _____ 8. Clambroth--Imp Smooth Panels 6 3/4" tall, 4 1/2" base, 8 1/2" opening, jardiniere vase--Unbelievable! | _____ 18. M--Dugan Question Marks CRE stemmed compote--Georgia Belle exterior, Puzzle pattern on foot |
| _____ 9. Marigold Over Milkglass--Imp Smooth Panels 7 3/4" tall vase, 6 1/2" opening--slag in base | _____ 19. PO--Dugan Puzzle stemmed bonbon--Floral and Wheat ext. |
| _____ 10. Smoke--Boston? (Bond?) 6" carnival glass vase, radium electric--see photos | _____ 20. W--Orange Tree 5 1/4" whimsey ruffled compote from stemmed sherbet--most unusual |
| | _____ 21. Rich M--N stippled Fruits and Flowers bonbon |

22. **PO--Westmoreland Caroline Dogwood 9 1/2" ruffled bowl**
23. PO--Dugan Petal and Fan 6" ruffled bowl
24. **Radium M--Westmoreland Miniature 4 1/2", 4 ruffle bowl w/ Intaglio Flower (?) on exterior--lavender opal rim!**
25. Marigold Over Milkglass--Imp Floral and Optic 7" rose bowl--worn interior
26. **Marigold Over Milkglass--Fenton Holly 8" round bowl--very rare**
27. PO Dugan Petal and Fan 6" ruffled bowl
28. **Moonstone--Imp Windmill 7" round bowl--another scarce one**
29. Shimmering Clambroth--Imp Windmill 8" ruffled bowl--Breathtaking!
30. **Deep Amber--Imp Heavy Grape 10" bowl--excellent color**
31. M--Imp Grape 9" low ruffled bowl
32. **Smoke--Imp Pansy ruffled pickle dish**
33. PO--Dugan Holly and Berry 7 1/2" ruffled bowl
34. **Rare Moonstone--Fenton Dragon and Lotus 9" ruffled bowl**
35. PO--Dugan Apple Blossom Twigs 9" ruffled bowl
36. **Pastel PO--Fenton Dragon and Lotus 9" ruffled bowl--very scarce**
37. PO--Dugan Heavy Grape 10 3/4" ruffled bowl--Compass exterior
38. **Blue Opal--Westmoreland Hobstar and Fruit 5 3/4" ruffled bowl--great little rarity**
39. Radium M--Imp Scroll Embossed 9 " ruffled bowl--File ext.
40. **Yellow Vas--Fenton Holly 3 in 1 edge, 9" bowl--marigold overlay**
41. Scarce M--N Apple and Pear Intaglio 10" round bowl--how many do you see?
42. **Lime Vase--Fenton Two Flowers footed, ruffled 5 3/4" bowl**
43. P--Dugan Smooth Rays/Jeweled Heart 6" ruffled bowl
44. **Dark M--Fenton Kittens two sides up card tray--2 sets of kittens!**
45. M--Split Diamonds creamer
46. **Aqua--Fenton Sailboats 5 1/2" round, flared bowl--scarce shape and color**
47. B--Dugan Fanciful 9" plate--scarce blue
48. **W--Dugan Fanciful 8 1/2" plate with turned up edge**
49. W--Dugan Persian Garden 6 3/4" plate--Pool of Pearls ext.
50. **P--Dugan Amaryllis tri-corner compote--scarce**
51. W--Dugan Roundup 9" plate with turned up edge--sparkling pastels!
52. **Lav--Dugan Roundup 9" low ruffled bowl--radium finish**
53. W--Fenton Orange Tree 9" ruffled bowl
54. **BA--Dugan Honeycomb and Beads 7 1/2" CRE plate--nice piece**
55. W--Dugan Six Petals 8 1/2" ruffled bowl--white delight
56. **P--Dugan Apple Blossom Twigs 9" low ruffled bowl--smooth edge and exterior!**
57. W--N Hearts and Flowers ruffled bowl--blues in the center
58. **M--Dugan Circle Scroll tri-corner hat whimsied from tumbler**
59. M--Dugan Big Basketweave 4" vase
60. **BA--Dugan Circle Scroll creamer--very tough to find**
61. M--Lattice Band two sides up hat whimsey from tumbler
62. **Rich M--Fenton Persian Medallion 6" plate w/ Orange Tree ext.**
63. M--Jeanette Cornucopia 5" vase
64. **Ice B--Fenton Cornucopia candlesticks--2 x \$**
65. Green and Yellow--Jeanette Cornucopia vase--not iridized
66. **Pink Frit--Dugan Honeycomb rosebowl--early Dugan art glass item**
67. M--Imp Daisy 9 1/2" handled basket
68. **Smoke--Imp Daisy 9 1/2" handled basket**
69. Crystal--Dugan Mary Ann two handled vase--not iridized
70. **Blue Opal--Westmoreland Corinth 8 3/4" vase**
71. Radium Pastel Electric Crystal--9" vase, panelled pattern, 7 1/2" flared top, light green base
72. **Deep B-N Tree Trunk 10 3/4" vase**
73. Monstrous Purple--Imp Ripple 17" funeral vase, 4 5/8" base, 9 1/4" flared opening--A humdinger!
74. **Elec P--Imp Ripple 12" vase, 3 3/8" base--classic beauty**
75. P--Imp Ripple 11 1/4" vase, 2 7/8" base, SPOUT TOP!!
76. **P--Imp Ripple 10 3/4" vase, 2 7/8" base**
77. Smoke--Imp Ripple 10 1/2" vase, 2 7/8" base--very nice irid.
78. **P--Imp Ripple 8 1/2" vase, 2 1/2" base--pretty top to bottom**
79. M--Imp Miniature Morning Glory 5 1/2" vase--super color
80. **M--Imp Thin Rib and Drape 5 3/4" vase**
81. Lav tint--Fenton 9 1/2" Diamond and Rib vase
82. **G--Fenton Diamond and Rib 11" vase--open bubble in base**
83. M--Dugan Pulled Loops 11" vase
84. **Scarce G--Fenton Boggy Bayou 10 1/2" vase**
85. M--Dugan Spiralex 11 1/2" vase
86. **G--Fenton Plume Panels 9 1/2" vase--Striking Iridescent Overlay!**
87. Contemporary Amberina--Mary Ann two handled vase
88. **P--Dugan Mary Ann two handled vase**
89. B--Cathedral chalice--reglued chip
90. **M--Cathedral chalice--extra nice color**
91. Smoke--Imp Swirl 7" vase--radium
92. **Excellent G-N Diamond Point 11 1/2" vase**
93. B--N Fine Rib 9 1/2" vase--Multi Electric
94. **M--Rose Garden 9 1/4" cylinder vase--outstanding example**
95. M--Vining Leaf 8 1/4" pedestal vase--frosted panel
96. **M--Jain 8 3/4" right handed vase**
97. Elec P--Imp Grape 9 1/2" deep round bowl--Awesome!
98. **P--Imp Grape 8 1/2" ruffled bowl**



99. P--Imp Grape 8 1/2" ruffled bowl--grapes are purple!
100. **P--Imp Grape 11" ruffled bowl--they just keep getting better**
101. M--Imp Grape 8 1/2" ruffled bowl
102. **Rich Amber--Imp Grape 8 1/2" ruffled bowl**
103. Elec P--Imp Pansy 9" ruffled bowl--radium gem
104. **P--Imp Pansy 9" ruffled bowl--multi electric**
105. Super Amber--Imp Pansy 9" ruffled bowl
106. **Stunning P--Imp Shell and Sand 8" round, flared bowl--smooth back**
107. P--Imp collar base Open Rose 8" ruffled bowl--electric
108. **P--Imp collar base Open Rose 9" deep, round bowl**
109. P--Imp footed Lustre Rose 7 1/2" round, flared bowl--killer on both sides
110. **Smoke--Imp Acanthus 10 1/4" chop plate--One of the best!**
111. Great M--Imp Acanthus 10 1/4" chop plate
112. **PO--Dugan Roundup 8" ICS bowl**
113. PO--Dugan Dogwood Sprays 9", ten ruffle, dome footed bowl
114. **PO--Dugan Apple Blossom Twigs 9", ten ruffle bowl--Basketweave ext**
115. PO--Dugan Six Petals 7 3/4" ruffled bowl
116. **Scarce B--Fenton Panther 5 1/4" round bowl**
117. B--Fenton Grape and Cable 8", ICS, spat ftd bowl--nice one!
118. **B--Fenton Open Edge 6" JIP basket--great example**
119. M--Fenton Iris ruffled compote
120. **Scarce B--Fenton Iris ruffled compote**
121. A--Fenton Iris ruffled compote
122. **Super G--Fenton Iris ruffled compote**
123. Rich M--Fenton Lions 7 1/2" ruffled bowl--great detail!
124. **M--Fenton Dragon and Strawberry 9 3/4", ruffled, collar base bowl--Exquisite bowl**
125. M--Fenton Dragon and Lotus 9" ruffled bowl--pumpkin
126. **Scarce G--N Sunflower spat ftd, ruffled bowl--some would say emerald!**
127. M--N Sunflower spat ftd, ruffled bowl--top notch color!
128. **M--N Good Luck PCE bowl--BW ext.--good eye appeal**
129. Lime G--N Peacocks PCE bowl--Gorgeous, but has an internal fracture
130. **Great M--N Three Fruits 9 3/4" flat plate**
131. M--N stippled Three Fruits 8 3/4" ruffled bowl--Rib ext.
132. **Fantastic W--Fenton Peacock at Urn 9 1/2" plate--dripping with pastels**
133. M--Dugan Lattice and Daisy 5 piece water set--radium
134. **Very Scarce B--Fenton Bouquet water pitcher**
135. B--Fenton Bouquet tumblers--4 x \$
136. **M--Dugan Wreathed Cherry tankard pitcher--somewhat hard to find**
137. Spectacular P--N Dandelion tankard pitcher--other worldly color
138. **P--N Dandelion tumblers--6 x \$**
139. Rare, Iridized Custard--N Grape Arbor tumbler, gold trim--some wear to gold, but so what?
140. **G--N Wishbone tumbler--Scarce and nice!**
141. P--N Wishbone tumbler--pretty example
142. **B--Fenton Ten Mums tumblers--2 x \$**
143. Renninger B--N Peacock at Fountain creamer--First one known?
144. **Lav--N Peacock at Fountain tumbler--engaging colors!**
145. M--Fenton Inverted Coin Dot tumblers--2 x \$
146. **G--Fenton Orange Tree Shaving Mug--excellent color**
147. Red--Fenton Orange Tree mug
148. **B--N Singing Birds mugs--Choice A or B, both nice!**
149. AO--N Dandelion mug--Loads of opal
150. **Scarce B--N Dandelion mugs--Choice A or B, hard to choose, they're both great**
151. P--N Dandelion mugs--Choice A or B
152. **Nice M--N Dandelion mug**
153. Sapphire--Fenton stretch glass 1/2 lb. covered candy dish
154. **AO--N Beaded Cable rose bowl--super color**
155. P--N Hearts and Flowers 9 1/4" plate--Rib ext.--electric highlights
156. **Ice B--N Hearts and Flowers PCE bowl--colorful center**
157. W--N Hearts and Flowers ruffled bowl--blues, pinks and yellows
158. **Rich Ice B--N Hearts and Flowers ruffled bowl--This is the one!**
159. P--N Hearts and Flowers ruffled bowl--multi electric
160. **Scarce A--N Hearts and Flowers ruffled compote--seldom seen and fantastic**
161. W--N Hearts and Flowers ruffled compote
162. **Pumpkin M--N Hearts and Flowers ruffled compote**
163. Pastel M--N Hearts and Flowers ruffled compote
164. **B--N Hearts and Flowers ruffled compote--scarce and oh so pretty**
165. Rich radium M--Imp Hobstar Flower ruffled compote
166. **Odd M--N Fine Cut and Roses ruffled candy dish, amberish hues--normal feet**
167. Scarce Ice B--N Fine Cut and Roses ruffled candy dish, Fancy interior--normal feet, great pastels
168. **Ice B--N Nippon PCE bowl--very attractive**
169. Very Rare Ice B--N Grape and Cable nappy, whimsied from punch cup--Luscious colors!
170. **Scarce Ice B--N Sunflower ruffled, spat ftd bowl--truly nice item**
171. Rare Ice B--N Grape and Cable cologne bottle--seldom seen and lovely
172. **Sapphire Opal--Fenton Blackberry Spray ruffled hat--talk about scarce AND nice!**
173. AO--Fenton Poppy Show Vase, contemporary, souvenir from Lincoln Land Carnival Glass Club convention
174. **RARE AO--N stippled Grape and Cable bonbon--got one?**
175. Emerald G--N Greek Key ruffled bowl--super, but has point knocked off

176. **Rare Sapphire--N stippled Grape and Cable bon-bon--drop dead gorgeous, second I've seen!**
177. M--N Three Fruits deep plate--you could argue that this is clambroth--smooth ext.
178. **Superb M--N Strawberry stippled PCE bowl--delicious colors**
179. M--N Grape and Cable Vt. stippled plate--first class pastels
180. **Very Rare Ice B--N Good Luck plate--minor cleat flaw, who cares?--It's a gem!**
181. Pastel M--N Good Luck PCE bowl--delightful and desirable
182. **M--N Good Luck PCE stippled bowl--hot pinks and blues**
183. Cobalt B--N Good Luck ruffled bowl--brilliant purples and greens
184. **G--N Good Luck PCE bowl**
185. Pumpkin M--N Good Luck ruffled bowl--another winner!
186. **Aqua w/ Opal Tips--N Good Luck ruffled bowl--unusal marigold overlay, super scarce**
187. G--N Good Luck ruffled bowl--BW ext, extra nice
188. **G--N Good Luck ruffled bowl--lots of blue iridescence on this one**
189. B--N Good Luck ruffled bowl--electric yellows and blues
190. **M--N Peacocks plate--collector favorite**
191. G--Fenton Vintage (Grape) small epergne
192. **P--N Acorn Burrs butter dish--highly sought after pattern**
193. P--N Acorn Burrs spooner
194. **P--N Acorn Burrs creamer**
195. P--N Acorn Burrs 7 pc berry set--very nice
196. **P--N Acorn Burrs 7 pc water set--high demand item**
197. P--N Grape and Cable sweetmeat compote w/ lid
198. **G--Mlbg Marilyn water pitcher--just about as nice as these scarce pitchers get**
199. B--Illinois Soldiers' and Sailors Home plate--old favorite
200. **Outstanding M--Illinois Soldiers' and Sailors Home plate**
201. M--Fenton Horse Medallion 7 3/4" plate--well detailed
202. **Unusual Smoky Blue--Fenton Horse Medallion rose bowl, great marigold overlay**
203. B--Fenton Ten Mums 9 3/4", 3 in 1 edge bowl--nice pattern
204. **B--Fenton Lions 7" ruffled bowl**
205. Pumpkin M--Fenton Wine and Roses stemmed cider
206. **M--Grape and Cable perfume bottle--4 1/2" tall**
207. Electric P--Imp Grape Carafe--blues, purples and golds galore
208. **B--Fenton Peacock at Urn 9 1/2" plate--radium dandy**
209. Ice B--N Poppy Show ruffled bowl--soft blue irid.
210. **Moonstone--N Drapery lamp shade--neat piece**
211. B--N Poppy Show ruffled bowl--many electric highlights
212. **P--N Poppy Show 9 1/4" plate, lays flat**
213. Radium M--Mlbg Blackberry wreath 7 1/2", 3 in 1 edge bowl
214. **Cherry Red--Fenton Blackberry Spray square hat--excellent color**
215. Red Amberina--Imp Floral and Option footed, round 9" bowl--good feet
216. **Cherry Red--Fenton collar base Peacock and Grape 9" ruffled bowl**
217. Red Amberina--Fenton Stippled Rays ruffled sauce bowl--top notch
218. **Red--Fenton Blackberry Spray crimped edge, JIP hat--so pretty!**
219. Cherry Red--Fenton Water Lily footed, ruffled sauce bowl
220. **Red--Fenton Holly ruffled hat--outstanding iridescence**
221. Red--Fenton Fine Rib 10" vase
222. **Rich Red--Fenton Stippled Rays 6" ICS bowl--superb color**
223. Red--Fenton Open Edge ruffled basket
224. **Red--Fenton Blackberry Open Edge 7" ruffled basket**
225. Red--Fenton Open Edge JIP basket--well above average color
226. **Red Amberina--Fenton Sailboats 6" ruffled bowl**
227. M--Fenton Kittens 2 1/4" tall spooner or toothpick
228. **M--Fenton Kittens 4 1/2" plate--lots of satiny iridescence**
229. M--Fenton Kittens ruffled bowl--also nice
230. **M--Fenton Kittens cereal bowl--internal fracture**
231. M--Fenton Kittens four sides up bowl--top of the line color
232. **M--Fenton Kittens two sides up card tray....and it's a good one, too!**
233. Rare Ice B--N Wishbone ruffled, footed bowl
234. **W--N Wishbone epergne base--who has the top?**
235. G--N Wishbone PCE bowl--BW exterior, desirable pattern
236. **Rare Clambroth--N Wishbone ruffled, footed bowl--nice pastels**
237. Rare Ginger Ale?--N Wishbone ruffled, footed bowl--very unusual and nice
238. **W--N Rose Show ruffled bowl--blue highlights**
239. Pumpkin M--N Rose Show ruffled bowl--Striking color!
240. **Radium Pumpkin M--N Rose Show 9 3/4" plate--The search is over, this is awesome**
241. P--N Rose Show ruffled bowl--electric colors galore!
242. **P--N Rose Show 9 5/8" plate--the hits just keep on coming!**
243. B--N Rose Show 9 1/2" plate--Premier piece with priceless color
244. **Ultra Rare Yellow Custard--N Rose Show 9 1/2" plate--marigold overlay, find one better!!**
245. Scarce Lav--N Rose Show ruffled bowl--intriguing color combo
246. **Pastel AO--N Rose Show ruffled bowl--hard to imagine one better--top o' the heap!**
247. Radium M--Fenton Grape and Cable 9" spat ftd plate
248. **Radium G--Fenton Grape and Cable 9" spat ftd plate**
249. B--Fenotn Grape and Cable 8 3/4" spat ftd plate--undervalued and overlooked
250. **P--N stippled Grape and Cable Vt. 9 1/4" plate--seldom seen**



251. G--N Grape and Cable 9" plate--BW ext.
252. **P--N Strawberry 9" Plate**
253. M--Fenton Holly 9 3/4" plate
254. **M--N stippled Three Fruits 9 1/4" plate--pastel irid.**
255. SCARCE Ice G--N stippled Grape and Cable 9" ruffled bowl--What color, outstanding!
256. **Very Scarce Lime Ice G--N Grape and Cable 5" round berry dish--Make room for this one!**
257. Super Ice G--N Peacock at Urn 9 3/4" ICS bowl--blues everywhere
258. **Lime G--N stippled Strawberry ruffled bowl--Fantastic iridescence and rare!**
259. Superb Pastel AO--N stippled Three Fruits Medallion ruffled, footed bowl--a pastel masterpiece!
260. **G--N Grape and Cable PCE bowl--plain exterior**
261. M--N Grape and Cable PCE bowl--BW ext.
262. **Pastel M--N Grape and Cable PCE bowl--plain back and pretty**
263. Rich M--N Strawberry PCE bowl, scarce BW exterior
264. **Fantastic Ice B--N Grape and Cable centerpiece bowl with turned in top--cream of the crop!**
265. Dark Ice B--N Grape and Cable 10 1/2" fruit bowl--another desirable piece
266. **G--Fenton Stag and Holly 10 1/2", ruffled, ball footed bowl--you don't see many green ones, especially like this**
267. Smoky Blue--Fenton Two Flowers 11" ruffled, ball footed bowl--color defies description
268. **P--N Embroidered Mums ruffled bowl--great Northwood design**
269. Electric B--N Embroidered Mums ruffled bowl--top shelf item
270. **Ice B--N Embroidered Mums ruffled bowl--smooth exterior, neat!**
271. Lav--N Embroidered Mums ruffled bowl--electric blue tints
272. **M--N Embroidered Mums ruffled bowl--blushing pinks and blues**
273. P--N Peacocks ruffled bowl--electric hues, rib ext.
274. **Lav--N Peacocks ruffled bowl--look at the purples and blues!**
275. Rich M--N Peacocks ruffled bowl--pinks and greens
276. **Electric B--N Peacocks ruffled bowl--A Screamer!!**
277. G--N Peacocks ruffled bowl--a scarce color
278. **Nice M--N Peacocks ruffled bowl--just loaded with pinks**
279. P--N Peacocks PCE bowl--another electric example in this flock of beauties
280. **Dark B--N Peacocks PCE bowl--the hits just keep on coming!**
281. Rare Renninger Blue--N stippled Peacocks PCE bowl--all over beautiful
282. **Super Pastel AO--N Peacocks ruffled bowl--stretchy, lush iridescence, find one better**
283. Dark A--N Peacocks ruffled bowl--classic carnival glass coloration
284. **B--N Peacocks 9 1/4" plate--Rib ext.**
285. Rare Lime G--N Peacocks 9" plate--gracious sakes!
286. **Ice G--N Peacocks 9" plate--fantastic pastels on this piece**
287. Radium W--N Peacocks 9" plate--what a gem!
288. **M--N Peacocks 9" plate--delightful blues and pinks**
289. M--N stippled Peacocks 9" plate--here's a nice one
290. **G--Fenton Peacock at Urn 8" ICS bowl--quite pretty**
291. Deep B--Fenton Peacock at Urn ruffled bowl--just a joy to behold!
292. **Strong M--Fenton Peacock at Urn ruffled bowl--tops for marigold**
293. Pastel M--N Hearts and Flowers ruffled compote--fabulous!
294. **B--N Hearts and Flowers ruffled compote--striking electric color**
295. Rare B--N Poinsettia and Lattice ruffled, footed bowl--electric all the way
296. **P--N Poinsettia and Lattice ruffled, footed bowl--looks like a winner!**
297. W--N Hearts and Flowers ruffled bowl--pastel all day long
298. **Ice G Vas--Fenton Diamond Optic 5" fan vase**
299. P--Dugan Amaryllis tri-corner compote
300. **Topaz--Central Glass Works? stretch glass 9 3/4" flared bowl, with gold decoration and black amethyst base, which also has gold trim--Super!**
301. Lot--eight carnival glass buttons
302. **Lot--four carnival glass buttons, three ice green and one white**
303. Tangerine--Fenton stretch glass pedestal creamer
304. **Dark M--Imp Optic Flute stemmed sherbet**
305. Celeste B--Pastel swan salt
306. **Rare iridized chocolate glass--"Feathered Scroll"? (unsure of pattern) rose bowl w/ gilt trim--never seen one like it**
307. Custard w/ nutmeg--N Tree Trunk 13 3/4" mid-size vase--hard to find piece
308. **Marigold over milkglass--Imp Smooth Panels 6" squatty vase, 3 1/2" base, 6 1/4" opening**
309. Pearlized custard--N Grape and Gothic Arches creamer
310. **MMG--Phoenix Lacy Dewdrop banana boat compote, 7" tall**
311. MMG--Phoenix Lacy Dewdrop covered compote, 9" tall w/ lid
312. **Pearlized Milk Glass--Phoenix Lacy Dewdrop 5 1/2" tall covered candy dish**
313. Pearlized Milk Glass--Phoenix Lacy Dewdrop 8 1/4" pitcher
314. **Pearlized Milk Glass--Dewberry footed candy dish with lid**
315. MMG--7" tall Phoenix glass geometric design single candlestick--original paper label on base
316. **MMG--Phoenix Lacy Dewdrop salver, 5 1/4" tall, 7 3/4" across, scalloped top**
317. Pearlized Milk Glass--Moon and Star giant compote, 8" tall, 10" across
318. **Cobalt Blue--N Rose Show 9 1/4" plate--multi electric beauty**
319. W--N Hearts and Flowers ruffled bowl--super iridescence
320. **Lime G--N Memphis punch cup**
321. B--Fenton Orange Tree punch cup
322. **W--N Grape and Cable punch cup**

- _____ 323. M-Mlbg Hobstar and Feather punch cups--3 x \$
- _____ 324. Powder blue base--perfume with tree of life pattern, marigold overlay, base only
- _____ 325. M--Grape and Cable powder jar base--no lid
- _____ 326. Green Opal--Circle Scroll creamer--Glow like crazy
- _____ 327. Sherman Hand spiral bound "Colors of Carnival Glass" books, vols 1 & 2--2 x \$
- _____ 328. Amber--Imp Open Rose 9" plate--pretty!
- _____ 329. M--Imp Open Rose 9" plate--stunning
- _____ 330. Helios G--Imp Open Rose 9" plate
- _____ 331. Rich Amber--Imp Open Rose 8 1/4" ruffled bowl
- _____ 332. Clambroth--Imp Lustre Rose 10 1/4" round, footed centerpiece bowl w/ plain interior
- _____ 333. Amber--Imp Open Rose 8" deep, round bowl
- _____ 334. Smoke--Imp Grape 9" deep, round bowl
- _____ 335. Scintillating Clambroth--Imp Double Dutch 9 1/2" footed, ruffled bowl--wicked good iridescence
- _____ 336. Electric P--Imp Grape 8 1/2" ruffled bowl--Wowser!
- _____ 337. Clambroth--Imp Grape 9" low ruffled bowl--high voltage electric pastels
- _____ 338. Pumpkin M--Imp Hattie 8 1/2" round, flared bowl
- _____ 339. P--Imp Hattie 8 1/2" round, flared bowl--electric tints
- _____ 340. Dark M--Imp Hattie 8" round, deep bowl--again, outstanding colors
- _____ 341. Sensational Clambroth--Imp Open Rose 10 3/4" collar base, ruffled bowl--electric pastels
- _____ 342. Smoke--Imp Open Rose 9" collar base, round, flared bowl
- _____ 343. Splendid Smoke--Imp Open Rose 10 3/4" collar base, ruffled bowl--brilliant electric pastels
- _____ 344. Helios G--Imp Pansy oval relish tray
- _____ 345. P--Imp Pansy 9" ruffled bowl--multi-color beauty
- _____ 346. Teal G--Imp Pansy 8 1/2" ruffled bowl--base glows
- _____ 347. P--Imp Star of David 8 1/2" ruffled bowl
- _____ 348. Russet Stretch--N #643 covered candy dish--excellent iridescence
- _____ 349. Amber--Imperial Open Rose rose bowl
- _____ 350. Electric P--Imp Grape 10 1/4" deep, ruffled bowl
- _____ 351. P--Imp Grape 9" ruffled bowl--very nice
- _____ 352. Superb Amber--Imp Open Rose 9 1/4" plate--a jewel!
- _____ 353. M--Imp Open Rose 9" plate
- _____ 354. P--Imp Pansy 8 3/4" ruffled bowl--electric hues
- _____ 355. Electric P--N Three Fruits Medallion spat footed, ruffled bowl--large open bubble on foot
- _____ 356. P--N Three Fruits Medallion spat ftd, ruffled bowl--lovely, lovely, lovely
- _____ 357. P--Dugan Jewelled Heart 10 3/4" ruffled bowl, Smooth Rays interior
- _____ 358. Electric P--Imp Diamond Lace water pitcher--chip on lip
- _____ 359. P--Imp Diamond Lace tumbler
- _____ 360. Elec P--Imp Grape 11 1/4" ruffled bowl--couple spots of peeling on top rim
- _____ 361. Amber--Imp Open Rose 9" collar base, ruffled bowl
- _____ 362. Helios G--Imp Open Rose 8 1/2" collar base, ruffled bowl
- _____ 363. Smoke--Imp Star Medallion 7 3/4" round bowl
- _____ 364. P--Imp Grape 8 3/4" ruffled bowl--no drop off in quality here!
- _____ 365. Smoke--Imp Three In One pattern 9 1/4" ruffled bowl
- _____ 366. Shimmering Clambroth--Imp Grape 9 1/4" low-ruffled bowl--Lights out lovely!
- _____ 367. P--Imp Grape 9" ruffled bowl--yet another nice one
- _____ 368. Helios G--Imp Open Rose 8" collar base, ruffled bowl
- _____ 369. Elec P--Imp Grape 9" ruffled bowl--great color, small rim chip
- _____ 370. Elec B--N Good Luck ruffled bowl--tip missing
- _____ 371. G--Imp Open Rose 8 1/2" collar base, ruffled bowl--chip on top rim
- _____ 372. G--N Wild Rose bowl shape, Smooth rays interior--damage to marie
- _____ 373. G--Tiger Lily tumblers, four, two are chipped, sold as lot
- _____ 374. Helios G--Imp Open Rose 8" collar base ruffled bowl
- _____ 375. BA--Liberty Bell paperweight--Contemporary
- _____ 376. Ice B Opal--ACGA 1978 Beaded Shell Mugs--Choice A or B
- _____ 377. Ice B--St Clair Holly Berry creamer and sugar--sells as pair

SPECIAL NOTE:

NO SUNDAY CALLS, PLEASE!

Winning Absentee Bidders will be contacted Monday through Wednesday of the week following the Auction!

Thank You!

SEND ALL MAIL TO:

18350 Hunters Ridge Ct.
Boonville, MO 65233

👉 AUCTION EVENTS

ANTIQUE EXTRAVAGANZA
JULY 7-12-08 @ Boonville, MO

CARNIVAL GLASS AUCTION
SEPTEMBER 13, 2008
Reggie and Linda Dunham of Illinois
@ Boonville, MO

CHECK THE WEBSITE DAILY
www.AWK-SHN.com

WATCH: 👉 Web Site: www.AWK-SHN.com

www.AWK-SHN.com
MICKEY REICHEL
 ANTIQUE & AUCTION, L.C.
 18350 HUNTERS RIDGE CT.
 BOONVILLE, MO 65233

PRESORTED
 FIRST CLASS MAIL
 US POSTAGE PAID
 SEDALIA, MO
 PERMIT 217

FIRST CLASS MAIL

SPECIAL INVITATION TO:

RETURN SERVICE REQUESTED

304



000008*000004*****MIXED AADC 650

LEE MARKLEY

PO BOX 306

MENTONE, IN 46539-0306



143



134



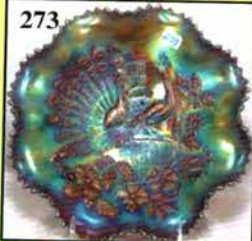
202



291-292



273



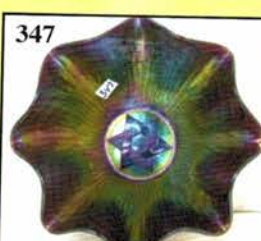
281



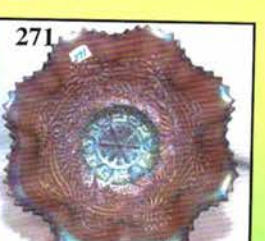
299



347



271



160-164



219-220



225-226

