

Lincoln Land
Carnival Glass Club Convention

Carnival Glass 2012 AUCTION

Saturday, June 2, 9:30 a.m.

Best Western Milwaukee
Airport Hotel &
Convention Center
Milwaukee,
Wisconsin

Auction Open
to the Public

30

10

315

50

175

Jim & Jan Seeck

Seeck Auctions

641-424-1116

1. Illusion bonbon - blue
2. Scroll Embossed small size ruffled compote - green
3. Persian Medallion card tray shaped bonbon - green
4. Persian Medallion card tray shaped bonbon- blue
5. Persian Medallion card tray shaped bonbon - marigold - tiny pinpoint on edge
6. Cosmos 10" ruffled bowl - marigold
7. Scroll Embossed deep ruffled bowl – purple - pretty
8. Scroll Embossed ruffled bowl - marigold
9. Rustic 12" vase – blue - minor burst in base
10. **Homestead chop plate – purple - super pretty, very beautiful iridescence with nice mold work**
11. **Homestead chop plate – amber - also a beautiful one, minor pinpoint on edge, should not hurt one bit!**
12. Vintage 9" ruffled bowls (2) – amethyst - one has nick on edge, sold as pair
13. **Rose Show 9" plate – purple - super pretty, hard to find purple ones that are pretty**
14. **Rose Show 9" plate – blue - electric, a dandy, has chip on rose**
15. **Rose Show 9" plate – marigold - very pretty**
16. Rose Show 9" plate – white - deep, almost like an IC bowl
17. M'burg Grape Wreath 6 1/2" IC shaped bowl - marigold - radium
18. **Good Luck 9" plate w/ribbed back – marigold - super pretty**
19. Petal & Fan ruffled sauce - peach opal
20. **Hearts & Flowers ruffled compote - renninger blue - very rare color, highly desirable & nice**
21. **Hearts & Flowers ruffled compote - ice green - has very pretty iridescence, scarce**
22. **Hearts & Flowers ruffled compote - ice blue - nice, manufacture open bubble on base, not damage**
23. **Hearts & Flowers ruffled compote - aqua opal - butterscotch, pretty**
24. **Hearts & Flowers ruffled compote - lavender - super pretty, has two small nicks on base**
25. **Hearts & Flowers ruffled compote – purple - very pretty**
26. **Hearts & Flowers ruffled compote – marigold - pretty pink & yellow iridescence**
27. Hearts & Flowers ruffled compote - white
28. Greek Key ruffled bowl w/BW back – green - minor pinpoint on point
29. Wreath of Roses compote – green
30. **N's Thin Rib 13" mid-size vase - aqua opal - very rare vase & nice w/beautiful butterscotch iridescence**
31. N's Thin Rib 13 1/3" mid-size vase – purple
32. Pansy ruffled bowl – purple - pretty
33. April Showers 11 1/2" vase - green
34. April Showers 13" vase - blue
35. **Acorn Burrs 6 pc. punch set – marigold - rare & desirable**
36. Wild Strawberry 6" handgrip plate - purple - scarce in this small size, chip on base
37. **Holly 9" plate - white w/painted green leaves - very rare & desirable, nick on point**
38. **Holly 9" plate - black amethyst - very rare color for these, nice**
39. **Holly 9" plate – green - very pretty, hard to find nice in green**
40. **Holly 9" plate – amethyst - another pretty one, scarce**
41. Holly 9" plate - blue
42. Holly 9" plate - white
43. Holly 9" plate – marigold - minor nick on edge
44. **Holly 9" plate - pastel marigold - pretty yellow & pink, irid.**
45. **Oriental Poppy 7 pc. water set – purple - very pretty set, pitcher & tumblers match nicely**
46. Fruits & Flowers bonbon - ice blue - scarce color, minor nick on base
47. Fruits & Flowers bonbon - green
48. Fruits & Flowers bonbon - amethyst
49. Fruits & Flowers bonbon - marigold
50. **N's Peacock at Urn master IC bowl - lime green - extremely rare color, not many around, a wonderful opportunity**
51. **N's Peacock at Urn master IC bowl - ice blue - pretty example**
52. **N's Peacock at Urn master IC bowl – blue - has electric highlights, rare color**
53. **N's Stippled Peacock at Urn master IC bowl - light smoke - very rare color, neat piece**
54. Morning Glory 8 1/2" JIP vase - marigold
55. **M'burg Big Fish IC shaped bowl – amethyst - radium, scarce**
56. Shell deep round bowl - smoke
57. Imperial Grape cup & saucer - green
58. Imperial Grape cup & saucer - marigold
59. **M'burg Wild Rose 10 1/2" kerosene lamp - green - 6 1/2" base, minor nicks on top edge of base**
60. N's Bushel Basket - aqua opal - butterscotch, nice
61. N's Bushel Basket - green - scarce color, minor nick on top edge by handle
62. N's Bushel Basket - lavender - scarce color, nice
63. N's Bushel Basket - purple
64. N's Bushel Basket - blue
65. N's Bushel Basket - ice green
66. N's Bushel Basket – marigold - dark, nice

- ___ 67. Fenton's Grape & Cable fruit bowl w/Persian Medallion interior - amethyst
- ___ 68. Cvd Frog - green - not iridized - has chip on top edge of base & chip on inside rim of top, not Carnival
- ___ 69. Ripple 8" vase - marigold - has 2 1/2" base
- ___ **70. M'burg Trout & Fly square shaped bowl - amethyst - satin, nice, fish sits perfect in bowl**
- ___ 71. Drapery rose bowl - aqua opal - nice example
- ___ 72. Drapery rose bowl - blue - nice
- ___ 72a. Drapery rose bowl - purple - nice
- ___ 73. Fenton's Grape & Cable 7" ruffled bowl - blue
- ___ 74. Fenton's Grape & Cable 7" ruffled bowl - marigold
- ___ **75. Illinois Soldiers & Sailors 7" plate - marigold - dark, a super beautiful one, RARE**
- ___ 76. Imperial Grape 6" plate - marigold
- ___ **77. Imperial Grape water pitcher - purple - very pretty, scarce**
- ___ 78. Imperial Grape tumbler - purple
- ___ 79. Fenton's Fine Rib 10" vase - red - scarce
- ___ 80. Fenton's Fine Rib 9 1/2" vase - aqua
- ___ 81. Fenton's Fine Rib 10 1/2" & 9" vases (2) - blue - sold a pair
- ___ **82. M'burg Trout & Fly IC shaped bowl - marigold - satin, scarce**
- ___ 83. Fine Cut & Roses rose bowl - white - large chip off top of one foot, other feet have normal nicks
- ___ 84. Fine Cut & Roses rose bowl - green - feet are pretty good, might be one with minor nick
- ___ 84a. Fine Cut & Roses rose bowl - purple - minor nicks on one foot, Fancy interior
- ___ 85. Fine Cut & Roses rose bowl - marigold
- ___ 86. Fine Cut & Roses rose bowl - custard - not Carnival Glass, minor nick on foot
- ___ **87. Diamond Lace water pitcher - purple - super pretty, will give you 2 tumblers, both with damage**
- ___ 88. M'burg Zig Zag 3 in 1 edge bowl - green - radium, nice
- ___ 89. Grape & Cable PCE bowl w/BW back - purple - minor pinpoint on edge
- ___ **90. Stippled Peacocks PCE bowl w/ribbed back - renninger blue - super pretty example, as nice as these get, rare**
- ___ **91. Stippled Peacocks PCE bowl w/ribbed back - blue - scarce, has electric highlights**
- ___ 92. Heavy Grape 6" bowl - purple
- ___ **93. 1910 Detroit Elks IC shaped bowl - amethyst - super pretty, minor spot of epoxy between points, scarce**
- ___ 94. Basketweave Open Edge 2 sides up basket - powder blue
- ___ 95. Orange Tree loving cup - green - scarce color
- ___ 96. Orange Tree loving cup - blue
- ___ 97. Orange Tree loving cup - marigold
- ___ 98. Waterlily ftd ruffled sauce - blue - silvery
- ___ 99. Waterlily ftd ruffled sauce - marigold
- ___ **100. Grape & Cable master punch bowl & base - purple - very scarce, nice**
- ___ 101. Persian Medallion round sauce - marigold
- ___ 102. Imperial Grape 7 pc. wine set - marigold
- ___ **103. Fenton's Peacock at Urn 9" plate - marigold - very nice**
- ___ 104. M'burg Cosmos round sauce - green
- ___ **105. Beaded Cable rose bowl - ice blue - scarce color, hard to find**
- ___ 106. Beaded Cable rose bowl - aqua opal - butterscotch, nice
- ___ 107. Beaded Cable rose bowl - blue
- ___ 108. Beaded Cable rose bowl - purple - has rayed interior
- ___ 109. Beaded Cable rose bowl - marigold
- ___ **110. Stippled Three Fruits Medallion spt ftd ruffled bowl - renninger blue - rare color**
- ___ **111. Stippled Three Fruits Medallion spt ftd ruffled bowl - aqua opal - super pretty, a dandy, this is the smooth edge version**
- ___ 112. Stippled Three Fruits Medallion spt ftd ruffled bowl - blue - minor nick on point
- ___ 113. Heavy Grape 8" plate - lavender - super pretty
- ___ 114. Heavy Grape 8" plate - purple
- ___ **115. Many Fruits round shaped 8 pc. punch set - purple - scarce set, nice**
- ___ 116. Captive Rose crimped edge ruffled compote - amethyst
- ___ **117. M'burg Hobnail rose bowl - amethyst - scarce**
- ___ **118. M'burg Hobnail rose bowl - marigold - also scarce**
- ___ 119. Leaf Chain ruffled bowl - amethyst - chip on point, lacks iridescence
- ___ **120. M'burg Many Stars IC shaped bowl - green - radium & scarce, 6 point star, light irid. on center star**
- ___ 121. Howard Furniture Four Pillars 11 1/2" vase - green - scarce, nice
- ___ 122. Persian Medallion 9" plate - blue - silvery
- ___ 123. M'burg Holly Whirl ruffled bowl - amethyst - radium
- ___ 124. Holly 3 in 1 edge bowl - marigold - flat
- ___ **125. Octagon small size water pitcher - purple - super pretty, a real beauty, rare to find in purple**
- ___ 126. Diamond Point 10 1/2" vase - purple - pretty
- ___ 127. Diamond Point Columns 8 1/2" vase - amethyst
- ___ **128. M'burg Peacock whimsy proof berry sauce - marigold - radium, very nice for these**
- ___ **129. M'burg Peacock whimsy proof berry sauce -**

amethyst - radium, nice

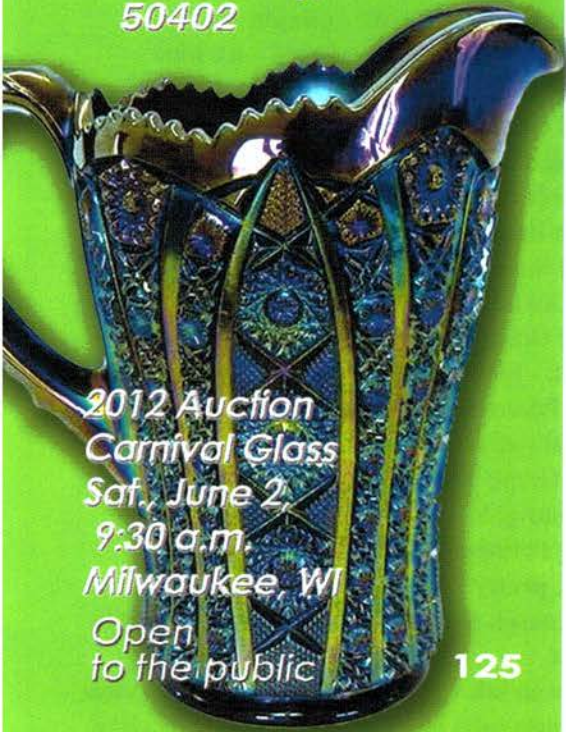
- ___ 130. M'burg Hobnail spittoon - amethyst - very pretty example
- ___ 131. Peacock & Grape ruffled bowl - marigold
- ___ 132. Brooklyn Bridge ruffled bowl - marigold
- ___ 133. M'burg Grape Wreath 7" ruffled bowl - green - radium, minor pinpoint on back edge
- ___ 134. Pony 10 ruffled bowl - marigold
- ___ 135. Peacocks ruffled bowl w/ribbed back - aqua opal - super pretty example, the birds are gorgeous
- ___ 136. Peacocks ruffled bowl w/ribbed back - green - absolutely super, lots of red iridescence
- ___ 137. Peacocks ruffled bowl w/ribbed back - white - super pretty irid., a beauty
- ___ 138. Imperial Grape ruffled bowl - purple - super
- ___ 139. Imperial Grape ruffled bowl - green
- ___ 140. Imperial Grape ruffled bowl - marigold - pretty
- ___ 141. Stippled Three Fruits PCE bowl w/ribbed back - blue - very scarce bowl & hard to find, minor rub on fruit
- ___ 142. Double Stemmed Rose dome ftd ruffled bowl - white
- ___ 143. Double Stemmed Rose dome ftd ruffled bowl - purple - gold irid.
- ___ 144. Double Stemmed Rose dome ftd ruffled bowl - marigold - light on irid.
- ___ 145. Stippled Three Fruits 9" plate w/ribbed back - aqua opal - has opal tips, super iridescence, pretty
- ___ 146. Stippled Three Fruits 9" plate w/ribbed back - marigold
- ___ 147. M'burg Fleur De Lis ruffled bowl - marigold - radium, nice
- ___ 148. N's Eight Sided bushel basket - blue
- ___ 149. N's Eight Sided bushel basket - marigold
- ___ 150. Dandelion tankard water pitcher - purple - super pretty pitcher, scarce & highly desirable
- ___ 151. Dandelion tankard water pitcher - marigold - lots of pink & yellow irid., very pretty
- ___ 152. Leaf Chain IC shaped bowl - light marigold - lacks irid., manufacture open bubble on base
- ___ 153. Two Flowers lg size ftd ruffled bowl - aqua - rare color, minor rubs on a couple of points
- ___ 154. Two Flowers lg size ftd ruffled bowl - marigold
- ___ 155. Poppy Show 9" plate - marigold - very soft pastel irid., nice
- ___ 156. Poppy Show 9" plate - white - manufacture roughness on base, typical for Poppy Shows
- ___ 157. Persian Medallion bonbon - red - silvery irid., minor nick on inside edge by handle
- ___ 158. Persian Medallion bonbon - aqua - nice
- ___ 159. Persian Medallion bonbon - amethyst
- ___ 160. Stippled Peacocks 9" plate w/ribbed back - blue - scarce plate, highly desirable
- ___ 161. Stippled Peacocks 9" plate w/ribbed back - marigold - absolute beauty, WOW
- ___ 162. N's Thin Rib 9 1/2" vase - purple
- ___ 163. Grape & Cable giant compote - purple - scarce
- ___ 164. Dragon & Lotus IC shaped bowl - blue - minor pinpoints on base
- ___ 165. Good Luck ruffled bowl w/ribbed back - sapphire - very rare bowl & nice, a dandy
- ___ 166. Good Luck ruffled bowl w/BW back - purple - minor nick between points, pretty
- ___ 167. Intaglio Daisy rose bowl - marigold
- ___ 168. Stippled Grape & Cable bonbon - blue slag - pinpoint between points
- ___ 169. Stippled Grape & Cable bonbon - marigold - nice
- ___ 170. M'burg Feather & Heart water pitcher - green - very pretty, chip on underside of lip
- ___ 171. Shell & Sand deep ruffled bowl - purple - minor roughness on top edge
- ___ 172. M'burg Nesting Swan ruffled bowl - green - satin, a pretty example
- ___ 173. M'burg Nesting Swan ruffled bowl - marigold - this is the Marie McGee bowl that is referred to as Lustred Ware, the leaves and swan are not iridized but the background of the bowl is
- ___ 174. Basketweave Open Edge JIP basket - blue
- ___ 175. M'burg Ohio Star vase - marigold - very pretty iridescence on a very rare vase
- ___ 176. Fenton's Grape & Cable deep round bowl - lime green
- ___ 177. Grape & Cable water pitcher - purple - very pretty example, as nice as these get
- ___ 178. Captive Rose 3 in 1 edge bowl - marigold
- ___ 179. Wide Panel round 9" bowl - amberina red
- ___ 180. N's Corn vase w/stalk base - green - super pretty example
- ___ 181. N's Corn vase w/plain base - white - very nice
- ___ 182. Beaded Cable rose bowl - blue
- ___ 183. M'burg Peacock at Urn Mystery bowl - amethyst - radium & super beautiful
- ___ 184. Stag & Holly lg size ftd ruffled bowl - marigold
- ___ 185. Stippled Grape & Cable Variant 9" plate w/ribbed back - blue - very rare color, highly desirable
- ___ 186. Stippled Grape & Cable 9" plate w/BW back - purple - very rare plate, nice for these
- ___ 187. Old Rose Distilling/Stippled Grape & Cable Variant 9" plate w/ribbed back - green - scarce
- ___ 188. Three Fruits Medallion spt ftd ruffled bowl - amethyst - nice
- ___ 189. Leaf & Beads rose bowl - white - scarce, nice
- ___ 190. Leaf & Beads rose bowl - aqua - very rare color, no opal on this one
- ___ 191. Leaf & Beads rose bowl - aqua opal

- ___ 192. Leaf & Beads rose bowl - blue - nice
 ___ 193. Leaf & Beads rose bowl - purple
 ___ 194. Leaf & Beads rose bowl - marigold
 ___ 195. Leaf & Beads rose bowl - blue opal - not
 Carnival, nicks on cleats underneath feet
 ___ **196. N's Town Pump - purple - has manufacture
 separation inside pump, nice**
 ___ 197. Grape & Cable 6" handgrip plate - green - chip
 on base
 ___ **198. Grape & Cable small size fruit bowl - blue -
 scarce color**
 ___ 199. Fine Rib 12" vase - blue
 ___ **200. Lattice & Poinsettia ftd ruffled bowl - ice blue
 - rare, nice**
 ___ 201. Stag & Holly spt ftd IC shaped bowl - marigold
 - nice
 ___ 202. M'burg Hanging Cherries IC shaped 10" bowl -
 amethyst - satin
 ___ **203. M'burg Peacock master berry bowl -
 marigold - radium, nice**
 ___ 204. Lot of Misc. Carnival Glass - marigold - as is
 ___ **205. Farmyard 8 ruffled bowl - purple - very rare
 & desirable, chickens have gold paint on
 them, minor pinpoint on one point**
 ___ 206. Orange Tree master berry bowl - marigold -
 chips around top edge
 ___ 207. Peacock & Grape spt ftd 9" plate - green - scarce
 ___ **208. Utah Liquors advertising double handgrip
 plate - amethyst - nice**
 ___ 209. Fenton's Stippled Rays 9" 3 in 2 edge bowl -
 green
 ___ **210. Peacocks PCE bowl w/plain back - white -
 very rare bowl, nice, burst in bird**
 ___ **211. Peacocks PCE bowl w/ribbed back - blue - has
 electric highlights**
 ___ **211a. Peacocks PCE bowl w/ribbed back -
 marigold - pretty**
 ___ 212. Dugan Cherries master banana boat shaped berry
 bowl - white w/red cherries, chip on top edge
 ___ 213. Dugan Cherries 3 pc. berry set - purple - one
 sauce has chip on base
 ___ 214. M'burg Blackberry Wreath 7" IC shaped bowl -
 green - satin
 ___ **215. M'burg Hobstar & Feather giant rose bowl
 - green - extremely rare item, minor pinpoint
 on saw tooth base, very minor for these**
 ___ 216. Double Scroll candlesticks - smoke
 ___ **217. Poppy pickle dish - ice blue - rare color, nice**
 ___ **218. Poppy pickle dish - white - frosty, nice**
 ___ **219. Poppy pickle dish - green**
 ___ 220. Poppy pickle dish - purple - scarce color
 ___ 221. Poppy pickle dish - blue - pretty
 ___ 222. Poppy pickle dish - marigold - pretty
 ___ 223. N's Thin Rib 7" squatty vase - amethyst
 ___ 224. N's Thin Rib 7" squatty vase - marigold
 ___ **225. Stippled Grape & Cable Variant ruffled bowl
 w/ribbed back - sapphire - very rare bowl, has
 several manufacture splits between points &
 minor nick on point**
 ___ 226. Pansy hdd nappy - purple
 ___ 227. Three Fruits ruffled bowl w/plain back - green -
 has blue irid., beautiful
 ___ 228. Three Fruits 9" plate w/BW back - purple
 ___ 229. Three Fruits 9" plate w/BW back - marigold -
 nice
 ___ **230. Peacocks 9" plate w/ribbed back - blue - very
 scarce plate, silvery**
 ___ **231. Peacocks 9" plate w/ribbed back - white - nick
 on point**
 ___ **232. Peacocks 9" plate w/ribbed back - ice green -
 pretty example**
 ___ 233. Grape & Cable hatpin holder - purple
 ___ 234. Imperial Grape wine decanter - green - stopper
 cracked
 ___ **235. Orange Tree 9" plate - blue - very pretty plate**
 ___ 236. Long Thumbprint 10" vase - green
 ___ 237. Dugan Cherries ruffled bowl - purple - nice
 ___ 238. Luster Rose spooner - purple
 ___ 239. Miller's Furniture Basketweave Open Edge 2
 sides up basket - marigold - lacks irid. on face
 ___ **240. M'burg Hobstar & Feather 13 pc. punch set -
 crystal - rare set, nice**
 ___ 241. N's #658 7" candlesticks - iridized custard -
 scarce, nice
 ___ **242. Kittens 2 sides up dish - amethyst - rare color**
 ___ 243. Kittens cup & saucer - marigold
 ___ 244. Kittens ruffled bowl - marigold - nice
 ___ 245. Kittens cereal bowl - marigold
 ___ **246. M'burg Peacock at Urn Mystery IC shaped
 bowl - green - radium, nice**
 ___ 247. M'burg Little Stars 7" ruffled bowl - green -
 satin
 ___ 248. Crucifix candlestick - light marigold - very light
 irid., if any
 ___ 249. Golden Wedding whimsey flattened bottle -
 marigold
 ___ **250. Rustic 19 1/2" funeral vase - blue - scarce &
 super nice**
 ___ 251. Luster Rose fernery - purple - chip in outside
 pattern
 ___ 252. Scroll Embossed 9" plate - purple - point
 chipped off
 ___ 253. Ribbon Tie 3 in 1 edge low bowl or plate - blue -
 this is flatter than most plates, unusual
 ___ 254. Wishbone & Spades 6" plate - purple
 ___ 255. Sailboat ruffled sauce - marigold
 ___ 256. Good Luck PCE bowl w/ribbed back - blue
 ___ 257. Good Luck PCE bowl w/ribbed back - purple

- ___ 258. Good Luck PCE bowl w/BW back - marigold
 ___ 259. M'burg Grape Wreath Variant 8" ruffled bowl - amethyst - radium, chip on base
 ___ **260. Hearts & Flowers ruffled bowl w/ribbed back - ice blue - nice**
 ___ 261. Captive Rose 9" plate - blue - silvery
 ___ 262. Fanciful 3 in 1 edge bowl - white - pretty
 ___ 263. Grape & Cable humidor - marigold - pretty, large chip on bottom of lid
 ___ 264. Fenton's Peacock & Grape ruffled bowl - amethyst
 ___ **265. M'burg Trout & Fly 3 in 1 edge bowl - marigold - radium, scarce**
 ___ 266. Waterlily large toothpick - marigold
 ___ 267. Petal & Fan large ruffled bowl - purple - large chip on edge
 ___ 268. Ripple 10 1/2" vase - aqua - has 2 7/8" base
 ___ 269. Hatpins including 3 Triads & 2 Morie beetles - all to go
 ___ **270. Good Luck 9" plate w/BW back - marigold - maybe one of the prettiest BW back ones I've sold, chip on top cleat of horseshoe**
 ___ 271. Strawberry PCE bowl w/BW back - purple
 ___ 272. Tornado small size vase - purple - chip on base
 ___ 273. Strawberry 9" plate w/BW back - purple - pretty
 ___ 274. Grape & Cable 6" plate - purple
 ___ **275. Sectors Department Store Heart & Vine 9" plate - marigold - very rare & pretty**
 ___ **276. God & Home tumbler - blue**
 ___ **277. N's Peacock at Urn IC sauce - ice blue - nice**
 ___ **278. N's Peacock at Urn IC sauce - ice blue - nice**
 ___ 279. N's Peacock at Urn IC sauce - ice blue
 ___ 280. N's Stippled Peacock at Urn IC sauce - custard - not Carnival
 ___ 281. M'burg Sunflower pin tray - purple - several polished spots on back of leaves
 ___ 282. Orange Tree IC shaped bowl - amethyst - super
 ___ 283. Mikado ruffled compote - marigold - nice
 ___ 284. Star of David & Bows dome ftd ruffled bowl - purple
 ___ **285. M'burg Courthouse IC shaped bowl - amethyst - tiny pinpoint on base**
 ___ 286. Plaid IC shaped bowl - marigold
 ___ 287. Stippled Three Fruits Medallion spt ftd ruffled bowl - blue - minor nick on point
 ___ 288. M'burg Hobnail Swirl rose bowl - marigold - scarce, nice
 ___ 289. M'burg Rays & Ribbons ruffled bowl - marigold - large chip out of base
 ___ **290. Stippled Strawberry ruffled bowl w/ribbed back - renninger blue - very rare color & nice**
 ___ 291. Persian Garden IC sauce - white
 ___ 292. Imperial Grape water pitcher - marigold
 ___ 293. Grape & Cable shot glass - purple
 ___ 294. Persian Medallion ruffled sauce - marigold
 ___ **295. M'burg Trout & Fly 3 in 1 edge bowl - amethyst - satin**
 ___ 296. Poppy pickle dish - blue - electric highlights, mold roughness on base
 ___ **297. Grape & Cable pin tray - purple**
 ___ 298. Nippon PCE bowl w/ribbed back - ice blue - minor pinpoint between points
 ___ 299. Imperial Grape water bottle - purple
 ___ **300. Hearts & Flowers PCE bowl w/ribbed back - white - very scarce bowl**
 ___ 301. N's Thin Rib 11" vase - blue - nice
 ___ 302. Inverted Strawberry powder jar - green - scarce
 ___ 303. Star of David ruffled bowl - purple - nice
 ___ 304. Stippled Grape & Cable Variant PCE bowl w/BW back - purple - many straw marks on edge
 ___ 305. M'burg Peacock at Urn master IC shaped bowl - amethyst - silvery, satin
 ___ 306. M'burg Grape Wreath Variant 8" 3 in 1 edge bowl - marigold - radium, nice
 ___ **307. M'burg Primrose ruffled bowl - green - radium, pretty**
 ___ 308. Isaac Benesch & Sons advertising ruffled bowl - amethyst
 ___ 309. Pastel Swan salt - purple - minor pinpoint on edge
 ___ 310. Pastel Swan salts including ice green (2), celeste blue, white opal (non carnival) - sold as lot
 ___ 311. Grape & Cable small size punch bowl base only - green
 ___ 312. Daisy & Drape turned in vase - white
 ___ 313. Pair of Custard glass pcs, rose bowl badly damaged
 ___ 314. Souvenir of Millersburg Glass Co. founded 1909 toothpick in vaseline, probably contemporary, sold with another contemporary toothpick
 ___ **315. Ribbed Tornado vase - amethyst - fantastic irid., this thing is incredible!**
 ___ 316. Grape & Cable punch bowl base only - purple - will give you a contemporary bowl
 ___ 317. Pair of Contemporary red paperweights
 ___ 318. Holly Frank Fenton 85th Birthday plate in red
 ___ 319. Levay contemporary aqua opal vase, signed on base
 ___ 320. Lot of 7 contemporary perfumes
 ___ 321. Lot of contemporary figurines
 All Lots after this are sold "AS IS", some pieces may have damage
 ___ 322. Lot of glass
 ___ 323. Lot of glass
 ___ 324. Lot of glass
 ___ 325. Lot of glass
 ___ 326. Lot of glass
 ___ 327. Lot of glass
 ___ 328. Lot of glass
 ___ 329. Lot of glass
 ___ 330. Lot of glass
 ___ 331. Lot of glass
 ___ 332. Lot of glass
 ___ 333. Lot of glass
 ___ 334. Lot of glass

Seeck Auctions
PO Box 377
Mason City, Iowa
50402

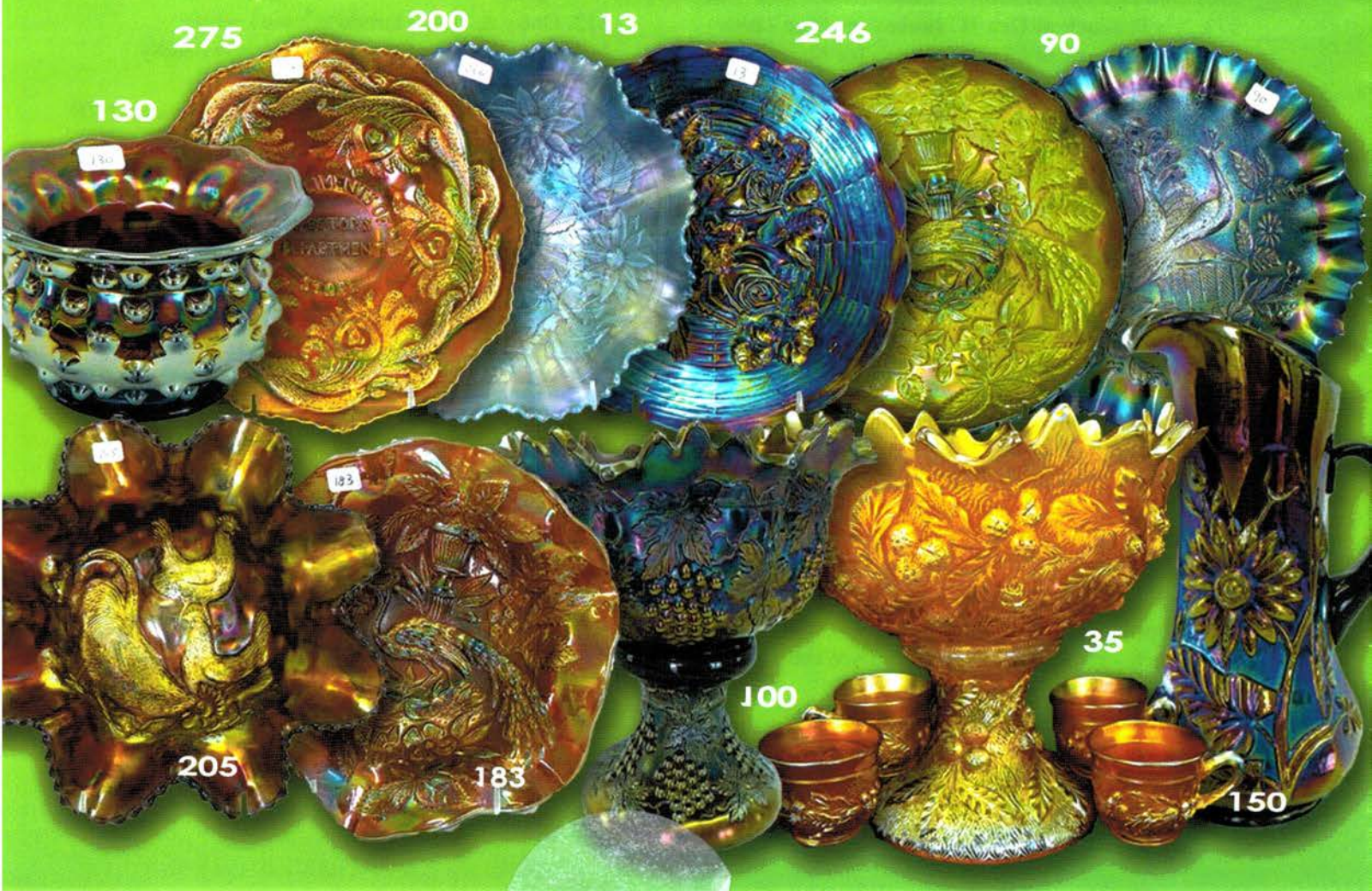
Presorted
First Class Mail
U.S. Postage
Paid
Mail Expeditors



2012 Auction
Carnival Glass
Sat., June 2,
9:30 a.m.
Milwaukee, WI
Open
to the public

125

T4 P1 218
LEE MARKLEY
BOX 306
MENTONE IN 46539-0306



275

200

13

246

90

130

205

183

100

35

150