

# Keystone Carnival Art Glass Auction

Saturday May 5th 2012 at 9:30 AM

*This is a Public Auction. You do NOT need to be a member of Keystone to attend*  
Preview Will be Friday May 4th from 10 am to 3 pm. Doors will open on Saturday at 8:00 am

**Harrisburg Holiday Inn and Conference Center**  
111 Limekiln Rd Drive, New Cumberland, PA 17070 1.717.774.2485

Phone us: 937.548.7835 Email us: [office@jimwrodaauction.com](mailto:office@jimwrodaauction.com) website: [www.jimwrodaauction.com](http://www.jimwrodaauction.com)

**Directions: Exit 242 (New Cumberland) off the PA turnpike. Hotel is immediately off the exit.**

This year we are very pleased to announce that we will be auctioning the *personal collection* of Samantha Prince. Samantha has been involved in CG for years and in many aspects from collecting, dealing, clubs, seminars, serving positions on boards, and of course her wonderful calendars just to name a few. With a new job that has demanded more of her time and commanded space, she has made the decision to auction off some of her personal collection, but she will continue to handle her website. All of you know Samantha takes great pride in buying and selling top notch glass with outstanding color and unusual pieces and her personal collection is no different. Samantha has been and will continue to be an active participant in the CG collecting hobby. This is sure to be a great auction with something for everyone! Please join us at the Keystone CG convention the first weekend in May!

**Color and Condition:** Folks we could go on and on with all kinds of verbiage in this catalog, but we won't. We'll just say it here.. This is one of those auctions you walk into the room and just stand back and admire all of the color. This collection is just beautiful!! People may say... "I never saw this on her site".. And you are right, you didn't! Just because you are a dealer doesn't mean you can't collect. Samantha collected and paid dearly for all of this glass, just as you would expect. The glass is beautiful and condition is excellent.. I think we found only 3 or 4 MINOR issues with any of this glass. Call and make your reservations, and we will see you at the auction!

\*\*\*\*\*Mail, E-Mail, Phone and Absentee Bids Policy:\*\*\*\*\*

**Absentee Bidding:** Absentee bidding is available via our "Auction Flex" bidding system located on our homepage at [www.jimwrodaauction.com](http://www.jimwrodaauction.com). You may also email us, or mail your absentee bids. You can also do "live phone" bids. Just give us a call at 937.548.7835 to set up your item schedule. Remember, call early as we have 2 lines available per item. There is a \$7.00 per successful bid fee. Items will be shipped within 5 days after payment is received. We reserve the right to cancel ANY bid for ANY reason. We will cancel all bids on an item if damage is found during the auction. *We reserve the right to withdraw any damaged item from the auction before the bidding starts.*

**Terms & Conditions:** Cash, Travelers checks, business or personal checks w/I.D. Visa/ MC & Discover with a 3% clerking fee



*Jim Wroda Auction Services*

5239 ST RT 49 S. Greenville, Ohio 45331

Licensed by the State of Pennsylvania Jim Wroda license #AU005279 – Mike Baker license #AU005297



Rapid Printing — Greenville, Ohio — 937-548-1010









- 1 Fenton 6" blue Little Fishes ft'd bowl Great detail
- 2 Fenton 6" purple Little Fishes ft'd bowl
- 3 Fenton 6" aqua Little fishes ft'd bowl. All three have really nice pressing and color
- 4 Fenton 5" purple Garden Mums round bowl
- 5 Dugan purple Question Marks stemmed plate
- 6 Nwood purple Springtime spooner
- 7 Marigold Classic Arts 5" rosebowl
- 8 Fenton GREEN butterfly & berry spooner. Scarce
- 9 FENTON MARI BUTTERFLY & BERRY ROSEBOWL. VERY RARE WHIMSY MADE FROM TUMBLER. Only one reported. A really cool piece of Fenton!
- 10 FENTON MARI WATERLILY SPITTOON WHIMSY MADE FROM TUMBLER. SUPER COLOR AND SHAPE, Only one reported. BUY IT!
- 11 Nwood Sapphire round Bushel basket
- 12 Nwood blue Hearts & Flowers compote. Very sharp!
- 13 Nwood IG Corn vase w/ Stalk base. Nice
- 14 Nwood purple Fine rib ft'd JIP vase
- 15 Cool Dugan 5" purple Pulled Loops squatty vase NICE!!
- 16 Fenton blue Fine Rib ft'd JIP vase.
- 17 Dugan mari 8" Five Hearts round bowl. Scarce
- 18 Nwood 8" IB Poppy Show bowl. VERY NICE!
- 19 Nwood 9" IB Embroidered Mums ruffled bowl. Scarce and pretty pastel irid
- 20 RARE Art Glass Tornado vase. Amber w/ Amber tornados. NICE PIECE OF GLASS! When these get into collection, you hardly ever get a chance to buy them!
- 21 FENTON 9" BLUE LOTUS & GRAPE FLAT PLATE. VERY NICE COLOR!
- 22 FENTON 9" GREEN LOTUS & GRAPE PLATE. SCARCE AND NICE
- 23 FENTON 9" PURPLE LOTUS & GRAPE PLATE. ANOTHER NICE PLATE!
- 24 Fenton RED 5" Square Blackberry Spray hat Shows HOT RED!
- 25 Nwood purple Butterfly bon bon w threaded back Scarce
- 26 Nwood green Butterfly bon bon w/plain back, Good Lookin' piece
- 27 Fenton POWDER BLUE Horse Medallion nut bowl. Very RARE color for this..
- 28 Fenton Aqua Horse Medallion ft'd rosebowl Hard to find!
- 29 Dugan 8" celeste blue Double Stem rose 10 ruffled bowl. Not many around anymore.
- 30 Fenton BEAUTIFUL GREEN Butterfly & Berry master berry bowl w/ the RARE Plain interior. Only a couple of piece known in all colors
- 31 Fenton mari Hearts & Trees master berry bowl. WOW!
- 32 Imp 10" SMOKE Ripple vase
- 33 Mburg 9" purple Hobnail Swirl vase. Scarce
- 34 Eda Rekord 8" blue vase. Scarce
- 35 Fenton 10" green Plume Panels vase
- 36 Fenton Diamond Rib Spearhead 7" squatty vase, green
- 37 Imp 9" Smoke Curled Rib vase
- 38 RARE Imp. Teal Double Scroll Candle sticks. Scarce
- 39 RARE Nwood 7" SAPPHIRE Leaf Columns squatty vase Scarce
- 40 Nwood 6.5" Mari Leaf Columns Squatty vase. VERY NICE!
- 41 Nwood 7" purple Thin Rib squatty vase
- 42 Eda 7" blue Floral Sunburst spittoon shape vase
- 43 Dugan 8" purple Ski Star 3-1 edge bowl.
- 44 RARE Nwood 8" SMOKE STRAWBERRY PCE BOWL. VERY RARE AND NICE PASTEL IRID. Not sure I have ever seen this before. True smoke!
- 45 Dugan 8" elec purple Dogwood Sprays 10 ruffled deep bowl. Always a hit!
- 46 Dugan 9" purple Cherry ICS bowl w/ JH ext
- 47 Nwood 8" elec blue Embroidered Mums ruffled bowl. HOT LOT!!
- 48 Dugan 7" white Target squatty vase. Scarce
- 49 Nwood 10" green G&C PCE Salad bowl. RARE SIZE
- 50 Mburg 9" purple Whirling Leaves ruffled bowl
- 51 Fenton 8" purple Wild Blackberry 3-1 edge bowl, H. Maday and Co. 1910 Advertising
- 52 Dugan blue Stork & Rushes 7pc water set. Scarce set
- 53 Nwood AO 8" Rose Show ruffled bowl Nice
- 54 Nwood 9" white Rose Show plate. Way above avg!
- 55 Nwood 8" IB Rose Show ruffled bowl. SWEET!
- 56 Dugan 10" white Persian Garden ICS bowl.
- 57 Dugan 9.5" purple Persian Garden deep ICS bowl
- 58 Piccardo mari Fruit Band 9 pc wine set w/ tray Hard to find set and nice color
- 59 Dugan 8" purple Vintage dome ft'd bowl. Scarce
- 60 Nwood 8.5" It amy/ lav Strawberry PCE bowl. Strong elec hi-lights! Has a neat "swirl" in the base glass
- 61 7" GREEN 4 Flowers variant ruffled bowl. Scarce size for this bowl and really pretty emerald color
- 62 Fenton blue Butterfly & Fern 7 pc water set
- 63 Fenton 8" green Dragon & Lotus ICS bowl. Scarce
- 64 VERY RARE DUGAN 9" AMBER ROUND UP PLATE HMMM.. NOT SURE I HAVE EVER HEARD OF THIS.... ANY AMBER DUGAN IS RARE
- 65 Fenton 8" purple Feathered Serpent CRE bowl.
- 66 Mburg 9" radium purple Peacock at Urn flared master berry bowl. Very nice!
- 67 Dugan purple Nautilus sugar bowl
- 68 Dugan purple Nautilus creamer. Nice match to #67
- 69 Dugan 8" purple Border Plants 10 ruffled bowl. Bright color, scarce shape
- 70 Dugan 8" PO Ski Star tri cornered bowl
- 71 Fenton 9" TEAL Plaid ruffled bowl. Very scarce! and has nice color
- 72 Dugan 10" PO Petal & Fan ruffled bowl. Very attractive
- 73 Dugan 9" white Double Stem Rose ruffled bowl
- 74 Fenton 9" green Concord ruffled bowl
- 75 Fenton 8" blue Ribbon Tie 3-1 edge bowl
- 76 Mburg 7.5" mari Little Stars ruffled bowl
- 77 Fenton 7" purple Peacock & Dahlia ICS bowl.flake on base
- 78 Fenton 9" GREEN Holly plate. Scarce
- 79 Dugan 7" PO hand enameled Stippled Flower ruffled bowl
- 80 Dugan 8" mari Brooklyn Bridge 10 ruffled bowl
- 81 Imperial 10" smoke Smooth Panels vase
- 82 Nwood 9" Chinese coral Thin Rib vase RARE
- 83 Fenton 7" blue April Showers squatty vase
- 84 US Glass mari 6.5" Palm Beach vase made from tumbler, Another nice whimsy for this auction!
- 85 Eda 7" blue Floral Sunburst flared vase
- 86 Fenton 9" pastel mari Leaf Chain plate. Good lookin' plate!
- 87 Dugan 9" blue Cosmos Variant ICS flared bowl. Another scarce shape
- 88 Fenton 9" purple Little Flowers 3-1 edge bowl
- 89 Fenton 9" mari Coral plate. Really really nice!
- 90 Fenton 10" mari Little Flowers Chop plate. Scarce



- 91 Fenton 9" blue Dragon & Lotus ICS bowl
- 92 Dugan PO Starfish ruffled compote
- 93 Fenton 6" Amy. Little Flowers tri-cornered plate
- 94 RARE US Glass white w/ gold trim Palm Beach Mini rosebowl. Cool little piece!
- 95 Dugan purple Starfish bon bon
- 96 Fenton Flowers lavender rosebowl. scarce
- 97 Sowerby AMBER SQUARE Diving dolphin bowl w/ Scroll interior, Scarce
- 98 RARE Dugan purple Lattice Heart flared bowl points up. very unusual shape
- 99 Dugan PO Paneled Cherries ft'd tri corner CRE bowl
- 100 NWOOD DARK MARI G&C MASTER PUNCH SET W/ 10 CUPS. HERE'S A KEEPER! AS CLOSE TO PUMPKIN AS YOU WILL FIND
- 101 Fenton 7" purple Peacock & Dahlia ruffled bowl
- 102 Fenton Contemporary Red Atlantis fan whimsy vase
- 103 Fenton 8" blue Peacock & Grape ICS bowl
- 104 Nwood teal Raspberry gravy boat
- 105 Fenton mari Kittens Cup & Saucer
- 106 Fenton mari Kittens 2 sided plate
- 107 Nwood 9" mari Stippled Strawberry plate. Scarce
- 108 Nwood 9" mari 3 Fruits Stippled plate.
- 109 Fenton 8" blue Peacock at Urn ICS bowl
- 110 Nwood 7" purple Leaf Columns squatty vase NICE
- 111 Dugan 7" blue Lattice & Points vase
- 112 Dugan 8" PO Pinched swirl vase w/ Hyacinth top
- 113 Dugan 10" ELEC PURPLE Lined Lattice vase WOW!
- 114 Imp 12" ELEC PURPLE Beaded Bullseye vase. Keep it comin'! Wonderful color through-out this auction!
- 115 Imp 12" ELEC PURPLE Ripple vase. HOT!
- 116 Fenton 10" blue Stag & Holly ft'd ruffled bowl
- 117 Nwood 8" blue Peacocks ruffled bowl
- 118 Nwood 9" purple Peacocks PCE bowl Nice soft satin irid
- 119 Nwood 9" blue Peacocks PCE bowl. BRIGHT!
- 120 Nwood 8" lavender Peacocks ruffled bowl. Almost a wisteria color. Odd & nice!
- 121 Nwood 9" mari Peacocks PCE bowl
- 122 Nwood 8" Aqua Peacocks ruffled bowl. Scarce color
- 123 Nwood 9" blue Peacocks stippled PCE bowl w/ thin base
- 124 Nwood 9" purple Peacocks plate. Nice
- 125 Nwood 9" BLUE Peacocks plate. Scarce
- 126 Nwood dark mari Peacocks plate. A looker!
- 127 Nwood 9" mari Peacocks stippled plate Nice pastel irid
- 128 Nwood 9" blue Peacocks stippled plate. Scarce
- 129 Nwood 9" White Peacocks plate w/ rib back. Frosty
- 130 Nwood 9" IB Peacocks plate. Nice rich IB and colorful
- 131 Fenton 13" blue Bullseye and Beads vase. Always sought after vase. Not many of these get sold
- 132 Nwood 9" white Tree Trunk vase
- 133 Imp 11" mari Gothic Arches vase. Scarce in any color
- 134 Imp 12" ELEC PURPLE Parlor Panels vase. WOW!!
- 135 Nwood 13" SAPPHIRE Thin Rib mid size vase. What a great color!
- 136 Nwood 13" green Tree Trunk midsize vase
- 137 Nwood 14" purple Tree Trunk midsize vase with plunger base. Scarce
- 138 Fenton 14" mari Spearhead & Diamonds vase w. CRE top
- 139 Fenton 14" purple Rustic mid size variant vase
- 140 Fenton 17" WHITE Rustic midsize vase w/ CRE top
- 141 Fenton 7" green April Showers squatty vase w/ peacock tail interior
- 142 Fenton Cont. blue Heavy Iris vase
- 143 Fenton blue Ten Mums tankard. One of the nicest patterns Fenton made.
- 144 Nwood purple Grape Arbor tankard.
- 145 Fenton blue Orange Tree Scroll tankard. Getting hard to find. Pretty color
- 146 Nwood purple Blossom time compote
- 147 Fenton RED 8" Dragon & Lotus ICS bowl. Has a little yellow in base, Nice
- 148 Fenton 8" RED Holly ICS bowl. Scarce to find shape.
- 149 RARE FENTON AQUA OPAL DRAGON & LOTUS 8 RUFFLED BOWL. Nice detail and color on a sought after bowl!
- 150 Nwood 9" elec green Strawberry PCE bowl with Plain back. Nice color!
- 151 Dugan 9" elec purple Dogwood Sprays 10 ruffled bowl. Another HOT LOT! *Folks we could go on and on about color in this auction....just wonderful all the way thru! Please take a good look at all lots*
- 152 Nwood ELEC PURPLE 8" Hearts & Flowers ruffled bowl Another beauty
- 153 Nwood 8" pastel AO Three Fruits Medallion spatula ft'd bowl. Always on the list!
- 154 OH YEAH!!! Bright Mari Poppy Show plate. WHEW!!
- 155 Dugan 10" white Garden Path ruffled bowl Actually very scarce bowl
- 156 Blasting elec purple Apple Blossom Twigs 3-1 edge bowl. BUY IT!
- 157 Fenton 9" purple Thistle ruffled bowl
- 158 Umm... be careful not to burn your hands on this.! Fenton 9" ELEC ELEC BLUE Ten Mums 3-1 edge bowl. Take a deep breath and let the bidding begin!
- 159 Fenton Enameled Lotus Flower pitcher w/ Interior Drape
- 160 Fenton PURPLE Blackberry Block 5 pc water set. Very hard to find set and this has a very nice pressing!
- 161 Mburg purple Hanging Cherries water pitcher
- 162 Imp Amber Loganberry vase. Scarce
- 163 imp 9" elec purple Pansy ruffled bowl
- 164 imp 7" elec purple Heavy Grape plate
- 165 SUPER FENTON 9" DARK MARI DRAGON & LOTUS PLATE. A BURNER!!! GET'EM WHILE IT'S HOT!
- 166 Fenton purple Wreath of Roses punch bowl and base w/ Vintage interior.
- 167 Nwood purple Peacock at Fountain 10-pc. punch set. Very nice color with electric highlights.
- 168 Fenton 9" green Captive Rose low ICS bowl.
- 169 Mburg 8" green Peacock at Urn ruffled Mystery bowl.
- 170 Mburg 10" radium mari. Many Stars CRE bowl. Nice bright color!
- 171 Dugan 7" elec. purple Bells & Beads tri-corner CRE bowl.
- 172 Robert Hansen red Santa Claus fairy lamp. Quite hard to find!
- 173 Sowerby mari. Diamond Peaks 2-pc. fruit set. Not many pieces known in this pattern.
- 174 Dugan 8 1/2" elec. purple Cherries 3/1 edge footed bowl w/ VERY RARE DAISY & PLUME EXTERIOR. May be the only one reported in any color! If you want a beautiful bowl, here you go!!!
- 175 VERY RARE NWOOD AO WISHBONE FOOTED BOWL. VERY RARE! ONE OF ONLY THREE REPORTED. HAS NICE RADIUM IRID!!!



- 176 Dugan Blasting elec. purple Raindrops dome footed bowl. Outstanding!!!
- 177 Dugan 7" elec. purple Six Petal tri-corner bowl.
- 178 Fenton 9" mari. Peter Rabbit 8-ruffle bowl. Scarce!!
- 179 Nwood 12" purple Tree Trunk mid-size vase.
- 180 Fenton 11" purple Rustic mid-size vase. Some may call this Mburg Hobnail!!!
- 181 Imperial 8" elec. purple Ripple vase. Beautiful!
- 182 pair of Fenton IB Cornucopia candle holders
- 183 Nwood pastel AO Hearts & Flowers ruffled compote.
- 184 Rare Imperial mari. Zipper Loop small oil lamp. Super cute miniature lamp!
- 185 Dugan mari. Weeping Cherries 3/1 edge bowl
- 186 Nwood mari. Lightning Flower handled nappy. First one we've ever sold! Nice dark color.
- 187 Rindskopf Circle & Grooves mari. vase.
- 188 Fenton dark mari. Enameled Iris Diagonal Bank tankard. Heat check in handle.
- 189 Rindskopf mari. Vining Leaf spittoon.
- 190 Nwood white Beaded Cable rosebowl
- 191 Nwood 6 1/2" IB Leaf Columns squatty vase. Very Scarce
- 192 Imperial purple 474 milk pitcher
- 193 Mburg 7" purple Bulls Eye & Loops squatty vase
- 194 Dugan 11" blue Target vase
- 195 Dugan 13" elec. purple Lined Lattice peg footed vase
- 196 Dugan white Question Marks stemmed plate
- 197 Nwood 9" mari. Good Luck ruffled bowl
- 198 Nwood 9" purple Good Luck ruffled bowl
- 199 Nwood 9" pastel mari. Good Luck PCE bowl w/ Basketweave back.
- 200 Nwood 9" elec. blue Good Luck PCE bowl
- 201 Nwood 9" purple Good Luck PCE bowl
- 202 Nwood 9" dark mari. Good Luck PCE bowl
- 203 Nwood 9" blue Good Luck stippled ruffled bowl.
- 204 Nwood 8 1/2" purple Good Luck ruffled bowl with Plain back. Very hard to find combination.
- 205 Dugan white Puzzle 2-handled bon bon in banana boat shape
- 206 Nwood dark IG Peacock at Fountain compote. Very scarce.
- 207 Imperial green Columbia ruffled vase.
- 208 Nwood green Blossom Time compote. Tough color.
- 209 Dugan 9" elec. purple Stippled Petals 10-ruffle bowl.
- 210 Nwood 10" Wishbone PCE bowl in a rare smoky lavender color. This is cool!
- 211 Nwood 8" blue opal Rose Show bowl.
- 212 Fenton IG Enameled Dianthus hand enameled tankard.
- 213 Nwood 10" blue Peacock at Urn MIC bowl. Very scarce and pretty!
- 214 Imperial 9" white Floral & Optic footed bowl
- 215 Fenton GREEN Orange Tree footed fruit bowl. Very scarce!!!
- 216 Fenton blue Two Flowers footed giant rosebowl. Scarce with nice color throughout!!
- 217 Nwood light IB 8-sided Bushel Basket, Scarce
- 218 Dugan 7" elec. purple Bells & Beads low ruffled bowl with Souvenir of Iron Mountain Michigan
- 219 Nwood 9" purple Wishbone footed plate. Nice pressing and color!
- 220 Dugan purple Many Fruits punch bowl & base
- 221 Mburg 8" green Rosalind low round bowl. Rare size! Some may consider this a plate!
- 222 Fenton 10" white Diamond Rib vase. Scarce color!
- 223 Imperial Grape elec. purple wine decanter and stopper. Beautiful!
- 224 Imperial elec. purple Diamond Lace water pitcher. Everybody should have one!!!
- 225 Nwood white Raspberry milk pitcher
- 226 Imperial Heavy Grape dark mari. Punch bowl and base.
- 227 Nwood blue Peacock at Fountain water pitcher with electric highlights!
- 228 Imperial Heavy Grape 9" purple master berry with electric highlights.
- 229 FENTON 9" EMERALD GREEN PEACOCK AT URN 8-RUFFLE BOWL. BEAUTIFUL BLUE IRIDESCENCE THROUGHOUT
- 230 Dugan 8" white Six Petals ruffled bowl
- 231 Fenton 8 1/2" purple Concord 3/1 edge bowl. Great detail & color!
- 232 VERY RARE DUGAN HEAVY IRIS MARI. JIP HAT MADE FROM TUMBLER. ONLY ONE OR TWO OF THESE KNOWN!
- 233 Mburg 10" mari. Seaweed 3/1 edge bowl. Everybody loves this pattern.
- 234 Nwood 10" mari. Peacock at Urn MIC bowl.
- 235 Dugan 9" elec. purple Dogwood Sprays ruffled bowl
- 236 Nwood super pastel mari. G & C mid-size 10-pc. punch set. Bowl & base are fabulous!!
- 237 Imperial 9" elec. purple Shell & Sand plate. Outstanding!
- 238 Nwood 6" lavender Dreibus Parfait Sweets plate. Super!
- 239 Fenton 9" purple Stag & Holly footed plate. Extremely rare color. Nice pressing.
- 240 Fenton green Orange Tree loving cup. Quite nice!
- 241 Nwood elec. purple Memphis 2-pc. fruit set.
- 242 Fenton 8" blue Orange Tree ruffled bowl. Sharp looking bowl!
- 243 Mburg 9" green Trout & Fly ruffled bowl. Very nice irid.!
- 244 Fenton 7" blue Rustic squatty vase. Rare!
- 245 Nwood 6 1/2" green Thin Rib squatty vase. Nice color!
- 246 Dugan Nautilus 9" purple swung vase. Tallest one we've seen!
- 247 Fenton blue 10" Rustic vase w/CRE.
- 248 Fenton 11" pale ice green Panel vase.
- 249 Fenton 8" blue Peacock & Grape deep round bowl
- 250 Nwood Celeste blue Concave Diamond 8-pc. water set.
- 251 Fenton 8" blue Heart & Vine CRE bowl.
- 252 Imperial 8" elec. purple Shell & Sand round bowl.
- 253 Dugan 7" elec. purple Stippled Flower ruffled bowl. Very Nice bowl!
- 254 Mburg 6" purple Peacock at Urn flat plate. Any Mburg plate is considered rare.. Here's a good one!
- 255 Nwood AO Drapery rosebowl
- 256 Dugan 6" elec. purple Honey Comb & Beads deep round bowl w/CRE. Rare shape.
- 257 Mburg 10" mari. Blackberry Wreath ruffled bowl. Outstanding!!!
- 258 Dugan light mari. Question Marks stemmed plate
- 259 VERY RARE FENTON MARI. ON MOONSTONE PERSIAN MEDALLION 2-HANDLED BON BON. NO RECORD OF THIS SELLING SINCE 1988!!!
- 260 Fenton redish/amber Strawberry bon bon
- 261 Imperial purple Scroll Embossed large compote w/Eastern Star Ext.
- 262 Fenton 6" blue Butterfly & Berry CRE squatty vase
- 263 Imperial 8" elec. purple Morning Glory vase

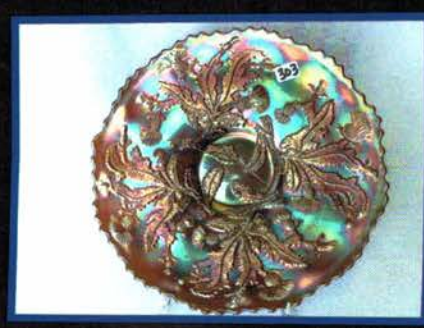
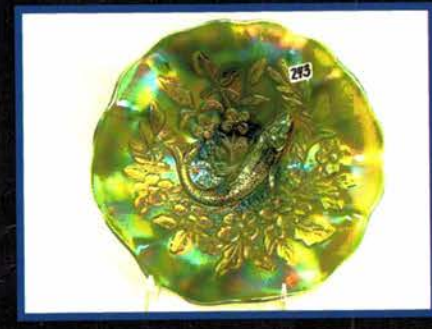
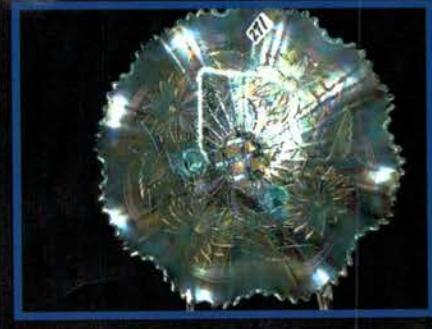
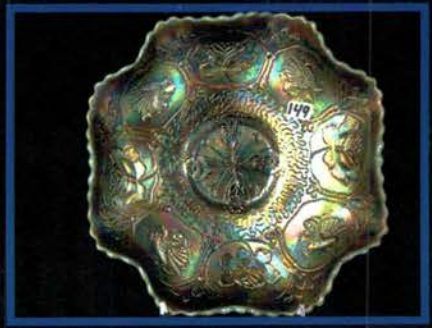
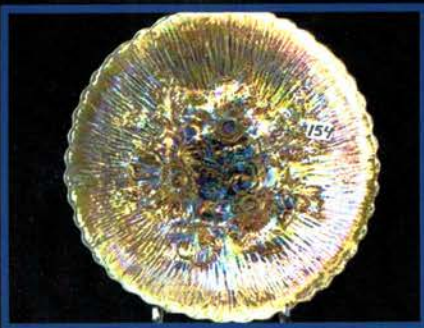


- 264 Fenton Contemp. Red Cactus JIP vase. Quite hard to find in this shape!
- 265 Dugan 8" elec. purple Circle Scroll vase. Wonderful!!
- 266 Nwood 10" purple Tree Trunk vase
- 267 Dugan 10" super elec. purple Ski Star ruffled bowl.
- 268 Very Rare Fenton 9" blue Plaid 3/1 edge bowl. Silvery but just a handful known in all colors!
- 269 Dugan 9" elec. purple Flower & Frames dome footed bowl
- 270 Fenton elec. blue Fan Tail centerpiece bowl
- 271 Nwood IB Poinsettia & Lattice footed bowl. One of Nwood's best patterns!!!
- 272 Nwood rootbeer Poinsettia & Lattice footed bowl. Has a very nice amber tinge!!
- 273 Nwood green Sunflower footed bowl. Very nice color!
- 274 Nwood IB Peacock and Urn MIC bowl. Very nice and always desirable!
- 275 Fenton 7" amy. Horse Medallion round bowl. Very nice detail and a scarce color!
- 276 FENTON 9" BRIGHT MARI. PEACOCK AT URN PLATE! JUST BEAUTIFUL!!!!!!
- 277 Mburg 10" teal Rosalind ruffled bowl. Very nice color!
- 278 Fostoria white Brocaded Summer Garden serving tray.
- 279 Nwood IB G & C dresser tray. Rare & Pretty!!!!
- 280 Nwood pastel mari. Springtime 7 pc. water set.
- 281 Dugan 6 1/2" bright mari. Circle Scroll vase. Cute!
- 282 Mburg mari. Hobnail Swirl spittoon. Rare & desirable.
- 283 Fenton 7" green Diamond Rib vase with flared points. Cool shape!
- 284 Nwood super IB Sunflower footed bowl. RARE!
- 285 Dugan radium blue Double Stem Rose 3/1 edge dome footed bowl
- 286 Imperial elec. lavender Scroll Embossed flat plate. Really bright color!!!
- 287 Nwood white Peach water pitcher. Nice frosty irid.
- 288 Dugan dark rich amber Puzzle round bon bon. Really odd "cool" color!
- 289 Sowerby mari. Wicker Work 2-pc. cake stand.
- 290 VERY RARE DUGAN 11" SAPPHIRE PULLED LOOPS VASE!
- 291 Nwood purple Springtime Butter dish with really bright color!
- 292 Dugan dark mari. 7" Circle Scroll vase with flared top.
- 293 Fenton black amy. Stag & Holly deep footed fruit bowl. Great detail. Scarce size and color!
- 294 Eda 6" mari. Kulor vase.
- 295 Eda 7" elec. purple Sunflower & Diamonds vase. Very rare to find with outstanding electric color, not normally seen European glass.
- 296 HOT Pink mari. Wreathed Cherry 7-pc. water set with painted cherries. Very rare and SUPER pretty!!! Pitcher has a 2" line from top. WHO CARES, take a look!
- 297 Nwood 9" mari. Wishbone tri-cornered footed plate.
- 298 Dugan 9" PO Round Up plate w/points turned up just a bit.
- 299 Nwood 10" mari. G & C MIC bowl.
- 300 Nwood 9" purple Nippon plate. Very scarce and pretty!
- 301 FENTON 9" MARI. ON MOONSTONE DRAGON & LOTUS 8-RUFFLE BOWL. VERY RARE.
- 302 Nwood 9" green Good Luck plate w/nice dark irid.
- 303 Fenton 9" purple Thistle plate. Very scarce.
- 304 Nwood 10" frosty white Peacock at Urn MIC bowl.
- 305 Fenton purple Butterflies bon bon w/original store label. "Easter Greetings Swantner and Young, Fenton, MO 1910". Not only does this have the original label but it has the misspelled label. Neat piece of advertising!!!
- 306 Nwood 6" horehound Dreibus Parfaits Sweets ruffled bowl. Beautiful color with real odd shade!
- 306a Nwood 6" Amy. Dreibus Parfait Sweets HG plate. Nice color and detail.
- 307 Dugan 8" PO Round Up low ruffled bowl
- 308 Dugan 8" PO Ski Star deep 10-ruffle bowl
- 309 NWOOD EMERALD GREEN G & C STIPPLED STANDARD SIZE 8-PC. PUNCH SET. RARE & BEAUTIFUL!!!! We had to twist Samantha's arm to let this go. But lucky for you, she has a low tolerance to pain! Haha!!! How's the shoulder Sam?!!!!
- 310 Dugan 9" white Fanciful low ruffled bowl. Frosty!
- 311 Dugan white Dahlia complete table set with beautiful gold trim. Super looking set. Very hard to find!
- 312 Dugan elec. purple Cherries 10-ruffle banana boat shape bowl. HOT!
- 313 Imperial 7" blasting elec. purple Scroll Embossed bowl with Tassel ext.
- 314 Dugan 9" elec. purple Apple Blossom Twigs 10-ruffle banana boat shape bowl. RARE!
- 315 Mburg green Hanging Cherries water pitcher. Beautiful color. Always sought after!
- 316 Fenton blue Enameled Columbine Zig Zag water pitcher
- 317 Fenton mari. Enameled Magnolia water pitcher.
- 318 Super Beautiful hand decorated Aurora Pearls Brides Bowl. Decoration inside & out!
- 319 Dugan 9" elec. purple Apple Blossom Twigs ruffled bowl w/RARE Basketweave back. Stunning!
- 320 Mburg 6" purple Isaac Benesch ruffled bowl
- 321 Dugan elec. purple Puzzle bon bon. Banana Boat shape. Another KILLER piece of Dugan purple!
- 322 Dugan 8" white Lattice & Points vase.
- 323 Dugan 13" dark mari. Lined Lattice vase with peg feet. Very Nice!
- 324 Fenton 16" blue Rustic mid-size vase with CRE top.
- 325 Dugan dark mari. Wreathed Cherry 7-pc. water set.
- 326 Fenton 8" lavender/wisteria Holly ruffled bowl. Really odd neat color!
- 327 Fenton mari. Enameled Chrysanthemum Cannon Ball water pitcher. Kind of tough to find on this blank. Color-top to bottom!!!
- 328 VERY RARE FENTON DARK MARI. STRAWBERRY SCROLL TANKARD. Has a small bubble burst on base NOT damage!
- 329 Victorian brass hanging chandelier w/6 enameled scenic shades. Beautifully done with really heavy enameling.
- 330 Contemp. blue Poppy Show JIP vase.
- 331 Fenton French opal Garden of Eden collector plate. Rare
- 332 US Glass mari Pineapple & Fan Wine decanter

*Folks, Thanks for your interest in the auction. Remember, you can place your absentee bids on the "Auction Flex" bidding platform. The link is on our home page at [www.jimwrodaauction.com](http://www.jimwrodaauction.com).*

*You can still call (937.548.7835) or email us (Office@jimwrodaauction.com) with your bids and we will enter them for you. Live phone bidding can be set up by calling the office and requesting the lots of interest. We are here to work with you so just let us know what you need and we'll do our best to accommodate you. We sure do appreciate all your bids! Jim Wroda*







Jim Wroda Auction Services  
5239 ST RT 49 S Greenville, Ohio 45331  
937.548.7835 Office@jimwrodauction.com

PRESORTED  
FIRST CLASS MAIL  
U.S. POSTAGE  
**PAID**  
CELINA, OH  
PERMIT NO. 99

**FIRST CLASS POSTAGE PAID**



7-8\*\*\*\*\*AUTO\*\*MIXED AADC 434  
LEE MARKLEY  
PO BOX 306  
502 N BROADWAY ST  
MENTONE IN 46539-9531



*Volume 6, Series 2012*

*Keystone Carnival Art Glass Convention May 3rd thru 5th 2012  
Featuring the Prince collection auction on Saturday May 5th at 9:30 AM  
Holiday Inn, New Cumberland PA*

