

Heart of America Carnival Glass Association Convention



The Arnold &
Dorothy Snell
Collection

Auction Open
to the Public

70

Carnival Glass 2012 AUCTION

Saturday, April 28, 9:30 a.m.

Kansas City, Mo.
Embassy Suites
International Airport
Hotel

30

40

18

10

Jim & Jan Seeck

Seeck Auctions

641-424-1116

JIM & JAN
SEECK

SATURDAY, APRIL 28, 2012 —9:30 A.M.

641-424-1116

Embassy Suites Airport Hotel
7640 NW Tiffany Springs Parkway

NO BUYER'S PREMIUM

Kansas City, Missouri

OPEN TO THE PUBLIC

For Online Auction Catalog, Check our Website: www.seeckauction.com

Online absentee bidding closes, Friday, April 27, at 6 p.m. CST

The Dorothy & Arnold Snell Collection

Preview: Friday Evening

Seeck Auctions is honored to be selling the Dorothy and Arnold Snell collection of Carnival Glass at the Heart of America Carnival Glass Convention this year. Anyone that has been attending Carnival Glass conventions and auctions over the past several years has met Arnold and Dorothy. They are the lovely couple from Colorado that seem to be everywhere and are some of the friendliest people around. Dorothy and Arnold enjoy the total experience of collecting Carnival Glass; the beautiful glass, the friendships, the joy of winning a piece and the frustration of losing a piece! It is time for them to scale down but will continue the Carnival Glass experience!

Reservations can be made by calling the hotel directly at 816-891-7788. Ask for reservations and mention the HOACGA Convention. If you have a problem or questions about reservations at the hotel or questions about the convention, please call Bob Grissom at: 816-356-5320.

Visit the Heart of America Carnival Glass Association on the Internet at: WWW.HOACGA.ORG

••••• AUCTION INFORMATION •••••

Terms: Cash or Check, VISA, MasterCard & Discover accepted w/proper ID. **4% Clerking Fee** on all purchases except for payment of cash or check. Announcements made day of sale take precedence over any printed information.

Also, please email us and we will put you on our email mailing list for auction notices.

We have 3 options for absentee bidding:

1) If you DO NOT have internet access or access to our website, you can:

Call us by phone to enter your bids at (641)424-1116 **OR** By sending the numbers of the item(s) desired and the amount bid on each to: Seeck Auctions, PO Box 377, Mason City, Iowa 50402. (The mail has not been very dependable. We would prefer you call us with your bids rather than send them in a letter.)

- All written and called in bids will be entered into the online catalog by us.
- Have all bids in by **Thurs., April 26..**

2) Enter your bids from our website into our online catalog through the Auction Flex system.

- ◆ When you get to the online catalog, you will need to login as a bidder. For the first time you will need to **set up your account** by creating a username and password. This will include filling out a form with your name, address, etc. You will also need to **register for the auction** which will ask you to enter a valid credit card number. This card will be validated by a \$1 charge to your card. This will only happen once and you will now be able to enter bids through our online catalog by just logging in with your user name and password.
- ◆ You will use this user name and password for all our auctions. You are not required to pay by credit card if you are successful. This is just a safeguard for us if someone does not pay. We will let you know what you owe us through an email and you can decide how you would like to pay us.
- ◆ An exciting advantage of entering your bids online yourself, is the option to be notified by email if you are outbid on an item. You will know when you are outbid on an item and you can increase your bid on that item or bid on something else. **There will be a cutoff date and time for entering your bids online.** After this time has passed, you will not be able to enter your bids from our online catalog.
- ◆ Remember that just because you are the high bidder in the online catalog, this does not mean you have won the item. Your bid will still need to beat the floor bidders and live phone bidders. This system will run our absentee bids just as we did before. You will still be able to buy the item lower than your online bid unless someone on the floor bids you higher.

3) Live phone bidding is available on pieces with an estimated sale price of \$500 or more. If you would like to participate in live phone bidding, contact us by **the Tuesday before the auction Tuesday, April 24.** We will need to know the lot# and the phone number that you can be reached at on the day of the auction. We will also need your home phone number if different than the above number. Please call with questions: 641-424-1116.

There is a \$7 handling charge for each successful bid. Shipping and insurance charges are additional. Bidders will be notified by phone/email if their bid(s) are successful.

This will be done 1 - 3 days after the auction.

If you do not receive an item that sold for less than your bid, assume we cancelled your bid because the item had a severe manufacture problem, damage or was not listed correctly.

BID INCREMENTS: \$1 - \$100/\$5 \$100 - \$200/\$10 \$200 - \$700/\$25 \$700 - \$1,500/\$50
\$1,500 - \$3,000/\$100 \$3,000+ Auctioneer's Discretion

1. Diamond Spindle candlesticks - ice green
2. Florentine 8 3/4" candlesticks - celeste blue
3. Orange Tree powder jar - blue
4. Basketweave Open Edge 2 sided up basket - lavender/blue – unusual, pretty color
5. Basketweave Open Edge 2 sides up basket - blue
6. **Fenton Panels 12 1/4" vase - celeste blue - scarce, nice**
7. Fishnet epergne - peach opal
8. Birds & Cherries card tray shaped bonbon – blue - nice
9. Blackberry Spray crimped edge flattened out whimsy hat - vaseline w/marigold overlay - scarce
10. **INDIANA STATE HOUSE 7 1/2" PLATE - BLUE EXTREMELY RARE, ONE OF TWO KNOWN, THIS ONE IS SUPER PRETTY, A RARE OPPORTUNITY TO OWN ONE**
11. M'burg Peacocks berry sauce – amethyst - radium, nice
12. **NUART Homestead chop plate - blue - extremely rare plate & as pretty as I've seen them, minor pinpoint on edge, should not hurt the value**
13. **HOMESTEAD CHOP PLATE - EMERALD GREEN - VERY RARE PLATE, A BEAUTY!**
14. **NUART Homestead chop plate – purple - fantastic! one of the best I've seen, cannot imagine putting any more irid. on this piece**
15. Fine Cut & Roses candy dish - aqua opal - very minor roughness on feet, typical for these
16. Fine Cut & Roses candy dish – blue - electric & super, again, minor roughness on feet
17. Fine Cut & Roses candy dish - ice blue - super pretty irid., minor roughness on feet
18. **M'BURG PERFECTION WATER PITCHER W/ CRIMPED TOP - MARIGOLD - RADIUM & SUPERB, THIS PITCHER IS A WONDERFUL, RARE PIECE OF MILLERSBURG!**
19. M'burg Perfection tumbler – marigold - rare tumbler, nice
20. **FARMYARD 6 RUFFLED BOWL – PURPLE - SUPER PRETTY W/FABULOUS IRID.!**
21. M'burg Little Stars 7" ruffled bowl – green - satin, nice
22. M'burg Little Stars 7" ruffled bowl - amethyst - satin & super beautiful
23. M'burg Little Stars 7" ruffled bowl – marigold - satin & another beauty
24. **ROSE SHOW 9" PLATE - LIME GREEN OPAL - SUPER PRETTY PLATE, VERY RARE & DESIRABLE**
25. **ROSE SHOW 9" PLATE - EMERALD GREEN - FANTASTIC IRID. ON THIS RARE PLATE, WOW!!**
26. Rose Show 9" plate – green - super pretty example for a green one, chip on rose
27. Rose Show 9" plate - ice green - very rare & highly desirable
28. **Rose Show 9" plate - marigold - pumpkin irid., fabulous!**
29. Amaryllis tri-cornered compote - marigold - nice
30. **HORSE MEDALLION FTD RUFFLED BOWL- CELESTE BLUE - ABSOLUTELY SUPER PRETTY! VERY RARE & HIGHLY DESIRABLE, A "KILLER" AS JIM WOULD SAY, VERY FEW AROUND**
31. Horse Medallion ftd ruffled bowl - green - super pretty, scarce color
32. Horse Medallion ftd ruffled bowl – amethyst - also super pretty, another scarce color
33. **Gevurtz Bros. Furniture & Clothing 6" adv. Plate - amethyst - as pretty as I've seen, rare**
34. **Ogden Furniture and Carpet Co. adv. ruffled bowl - amethyst - rare & nice**
35. The Great House of Isaac Benesch & Sons adv. ruffled bowl - amethyst - nice
36. **IMPERIAL GRAPE WATER CARAFE - EMERALD GREEN - FANTASTIC IRID., RARE**
37. **Peacock & Grape 3 in 1 edge ruffled bowl - peach opal - lots of pink irid., pretty**
38. **Peacock & Grape 3 in 1 edge ruffled bowl - lime green opal - very rare & nice**
39. Peacock & Grape 3 in 1 edge ruffled bowl - green - nice
40. **M'BURG ACORN ROUND COMPOTE – VASELINE - EXTREMELY RARE & SUPER, A TOP RARITY!**
41. **Panther ftd ruffled sauce – red - very scarce, nice**
42. Panther ftd ruffled sauce - aqua - very rare color & nice, probably rarer than the red
43. Panther ftd ruffled sauce – amethyst - scarce, might be the rarest color
44. **HEAVY IRIS TANKARD WATER PITCHER – WHITE - ABSOLUTELY SUPER, AS PRETTY AS YOU CAN IMAGINE, RARE COLOR**
45. Heavy Iris tumbler – white
46. **Heavy Iris tankard water pitcher - purple - very scarce pitcher, nice**
47. Heavy Iris tumbler - purple
48. **STIPPLED PEACOCK AT URN MASTER IC BOWL - SAPPHIRE - EXTREMELY RARE BOWL & NICE, ANOTHER OPPORTUNITY**
49. Peacock at Urn master IC bowl – marigold - very pretty
50. **Stag & Holly spt ftd ruffled bowl – red - very rare color, highly desired**
51. Stag & Holly spt ftd ruffled bowl – amethyst - scarce color
52. **STRAWBERRY SCROLL WATER PITCHER – MARIGOLD - A BEAUTY FOR THIS RARE PIECE!**
53. Strawberry Scroll tumbler - marigold - pretty
54. **STRAWBERRY SCROLL WATER PITCHER – BLUE - EXTREMELY RARE & HIGHLY DESIRABLE, TRY TO FIND ONE**
55. Strawberry Scroll tumbler - blue
56. **M'BURG ROSALIND 8 1/2" JELLY COMPOTE– AMETHYST - RADIUM & SUPER, BEAUTIFUL & TOP RARITY, ONE OF MY FAVORITES**
57. Holly CRE JIP hat – red - scarce
58. Holly CRE JIP hat - green
59. **N's Town Pump – green - super pretty example, chip at bottom edge of handle, green is tough**
60. **N's Town Pump - marigold - this fabulous, lots of pink, RARE**
61. N's Town Pump - purple - small nick on front of spout
62. Fanciful low ruffled bowl - purple - has electric blue irid., beautiful
63. Fanciful low ruffled bowl – blue - nice
64. **PETER RABBIT 9" PLATE – GREEN - VERY, VERY RARE PLATE & SUPER NICE, TOP QUALITY PIECE**
65. Grape & Cable pin tray – green - scarce, nice
66. Grape & Cable pin tray - purple - nice
67. **COSMOS & CANE LADIES SPITTOON - HONEY AMBER - EXTREMELY RARE & SUPER**
68. Horse Medallion JIP ftd bowl – green - scarce, nice
69. Horse Medallion JIP ftd bowl - vaseline w/marigold overlay - super

70. **M'BURG MULTI FRUITS & FLOWERS WATER PITCHER WITH FLAT BASE - AMETHYST- ONE OF JUST A FEW KNOWN, A GREAT MILLERSBURG PITCHER!**
71. Open Rose ruffled sauce – blue - extremely rare color & pretty
72. **Christmas compote–purple –a collector's favorite, nice**
73. Holly 9" plate - green - scarce color, nice
74. Fenton Holly 9" plate-amethyst-also scarce color & nice
75. Holly 9" plate – blue - nice
76. **GRAPE & CABLE HATPIN HOLDER - ICE GREEN - VERY RARE COLOR, TWO FEET HAVE MINOR NICKS**
77. **GRAPE & CABLE HATPIN HOLDER - ICE BLUE - TEMPTED TO CALL THIS CELESTE BLUE BECAUSE IT IS SO DARK, FABULOUS IRID., ALL THREE FEET HAVE BEEN POLISHED**
78. Grape & Cable hatpin holder – green - nice
79. Grape & Cable hatpin holder - purple - nice
80. Grape & Cable hatpin holder - marigold - nice
81. **Thistle 9" plate - amethyst - super pretty & rare**
82. **Thistle 9" plate - green - very rare & very nice**
83. Stippled Three Fruits Medallion spt ftd ruffled bowl - aqua opal - nice example
84. **Imperial Grape water pitcher - purple - fantastic! super beautiful!**
85. **Imperial Grape 7 pc. water set – smoke - super set, even the tumblers are nice**
86. Peacock & Grape spt ftd 9" plate - green - as pretty as these come, scarce
87. Peacock & Grape spt ftd 9" plate – amethyst - also a scarce color for these, nice
88. Peacock & Grape spt ftd 9" plate – blue - very pretty
89. Peacock & Grape spt ftd 9" plate - marigold - very pretty
90. **ORIENTAL POPPY TANKARD WATER PITCHER - ICE GREEN - SUPER RARE & SUPER PRETTY, VERY FROSTY, HAS RIBBED INTERIOR, WOW**
91. Oriental Poppy tumbler - lime green - has ribbed interior
92. **ORIENTAL POPPY 7 PC. TANKARD WATER SET - ICE BLUE - VERY RARE SET & BEAUTIFUL, PITCHER & TUMBLERS HAVE RIBBED INTERIOR**
93. Oriental Poppy tankard water pitcher - white - another pretty one, has restoration to spout, has ribbed interior
94. Oriental Poppy tumbler – white
95. **Oriental Poppy tankard water pitcher - green - super example, scarce**
96. Oriental Poppy tumblers (2) - green - both to go
97. **Oriental Poppy tankard water pitcher - purple - super example, a beauty, has ribbed interior**
98. Oriental Poppy tumbler - purple
99. **Oriental Poppy tankard water pitcher - marigold - dark, super! has ribbed interior**
100. Oriental Poppy tumblers (2) - marigold - both to go
101. Grape & Gothic Arches 4 pc table set – blue - very pretty set w/electric highlights
102. **M'BURG DOLPHINS COMPOTE – GREEN - VERY RARE & NICE, HAVEN'T SOLD ONE OF THESE FOREVER!**
103. **M'BURG DOLPHINS COMPOTE - AMETHYST - ALSO RARE & NICE, IT HAS BEEN A LONG TIME**
104. Plaid ruffled bowl - green - scarce color & desired pattern
105. Plaid ruffled bowl – blue - very nice
106. **Horse Medallion ftd rose bowl – red - extremely rare rose bowl, 1 of just 3 known, great piece!**
107. Horse Medallion ftd rose bowl - aqua - another very rare color for these and beautiful
108. **1911 Birmingham Age Herald ruffled bowl - amethyst - very rare, much rarer than plates, the building sits perfect to the ruffle**
109. **Utah Liquor Co. adv. 6" plate - amethyst - rare & very desirable, pretty**
110. Seasons Greetings Eat Paradise Sodas 6" adv. plate - amethyst - super example w/great mold work
111. **Zippered Loop finger lamp – smoke - 5" tall has 4 1/8" base, super pretty**
112. **Zippered Loop finger lamp - marigold - 4 1/2" tall, has 3 1/2" base, dark & super**
113. Nippon PCE bowl w/ribbed back - ice blue - scarce
114. **M'burg Rose Columns vase - green - has a little bit of teal color in the glass, extremely rare w/super irid., a favorite**
115. Lions 7 1/2" plate - marigold - scarce, nice
116. **Cosmos & Cane jelly compote - white - neat piece with pretty irid.**
117. **Poppy Show 9" plate - green - fantastic irid.! nick on poppy and minor nick on base, this beauty outweighs the damage**
118. **Poppy Show 9" plate - ice green - it has been a long time since I've seen one this nice**
119. **Poppy Show 9" plate - blue - electric, super!**
120. Poppy Show 9" plate - marigold - WOW pretty much covers it!
121. Poppy Show 9" plate - white - the end of a run of the prettiest Poppy Show plates we've sold in a long time
122. **Blackberry Spray CRE JIP hat - aqua opal - very rare in this shape and color, and pretty too!**
123. Blackberry Spray CRE JIP hat - reverse amberina- absolutely super
124. Blackberry Spray CRE JIP hat – red - cherry color & pretty
125. Blackberry Spray CRE JIP hat - amber/horehound- unusual color, nice
126. **RUSTIC 19" FUNERAL VASE - GREEN - HAS PLUNGER BASE, HAS ELECTRIC IRID., IF IT WAS NORTHWOOD, I'D CALL IT EMERALD**
127. **RUSTIC 23 7/8" FUNERAL VASE – AMETHYST HAS PLUNGER BASE, THIS HAS TO BE THE TALLEST VASE AROUND, THIS IS A BIG ONE!**
128. **RUSTIC 23 1/2" FUNERAL VASE - BLUE - HAS PLUNGER BASE, SUPER PRETTY IRID., MAYBE THE 2ND TALLEST I'VE SEEN, ARNOLD'S FAVORITE VASE!**
129. Good Luck 9" plate w/BW back - green - scarce, nice
130. Good Luck 9" plate w/BW back – purple - pretty
131. Good Luck 9" plate w/BW back - marigold – this is a Variant, scarce, nice
132. **M'burg Hobstar & Feather giant rose bowl - amethyst - very pretty radium irid., as nice as these come, from the Stremming Collection**
133. Stag & Holly large size ftd ruffled bowl - green - very rare color, a dandy!
134. Stag & Holly large size ftd ruffled bowl – aqua - irid. is beautiful, even from one side to the other
135. Stag & Holly large size ftd ruffled bowl - amethyst - as nice as I've ever seen an amethyst one
136. **POINSETTIA & LATTICE FTD RUFFLED BOWL- WHITE - HAS RIBBED BACK -**



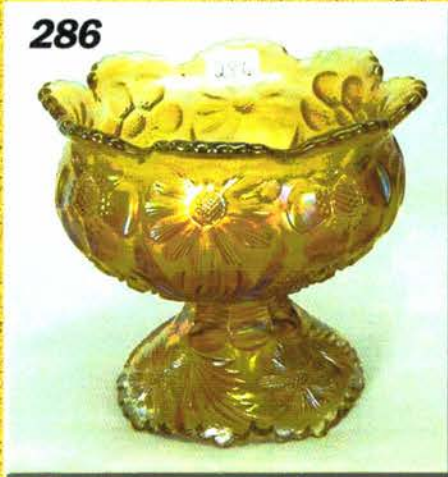
203

201

216

349

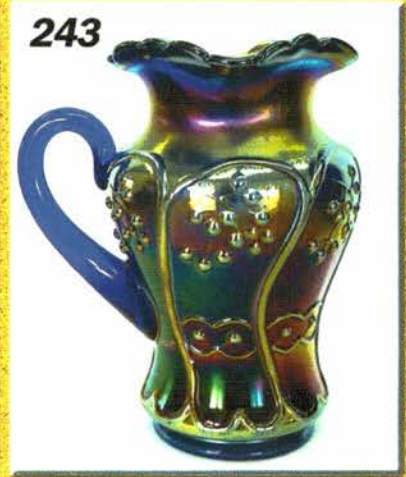
270



286



324



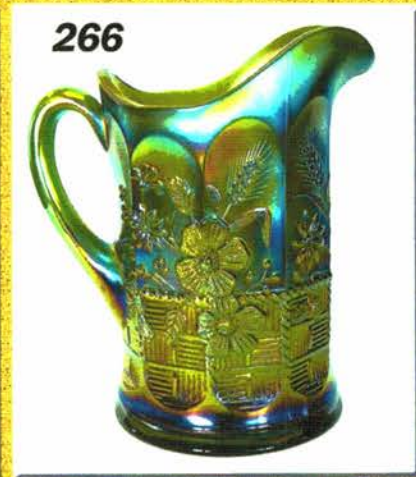
243



226



209



266



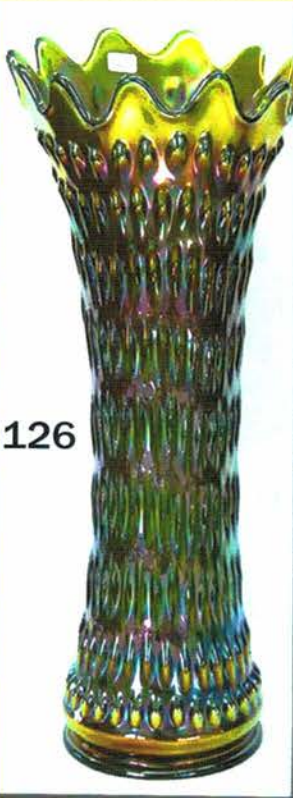
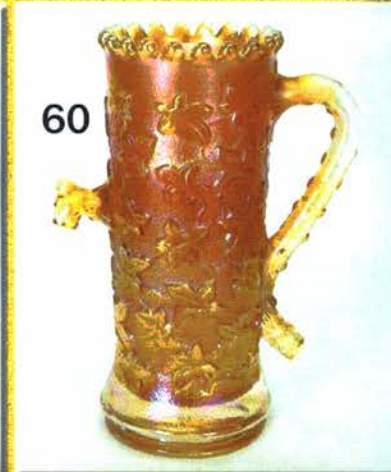
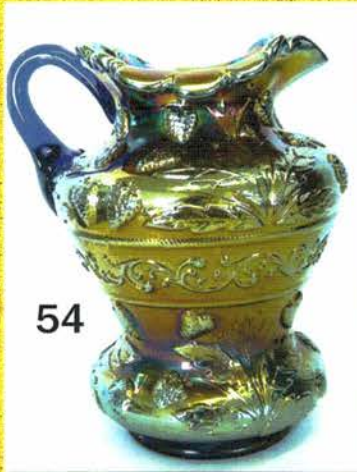
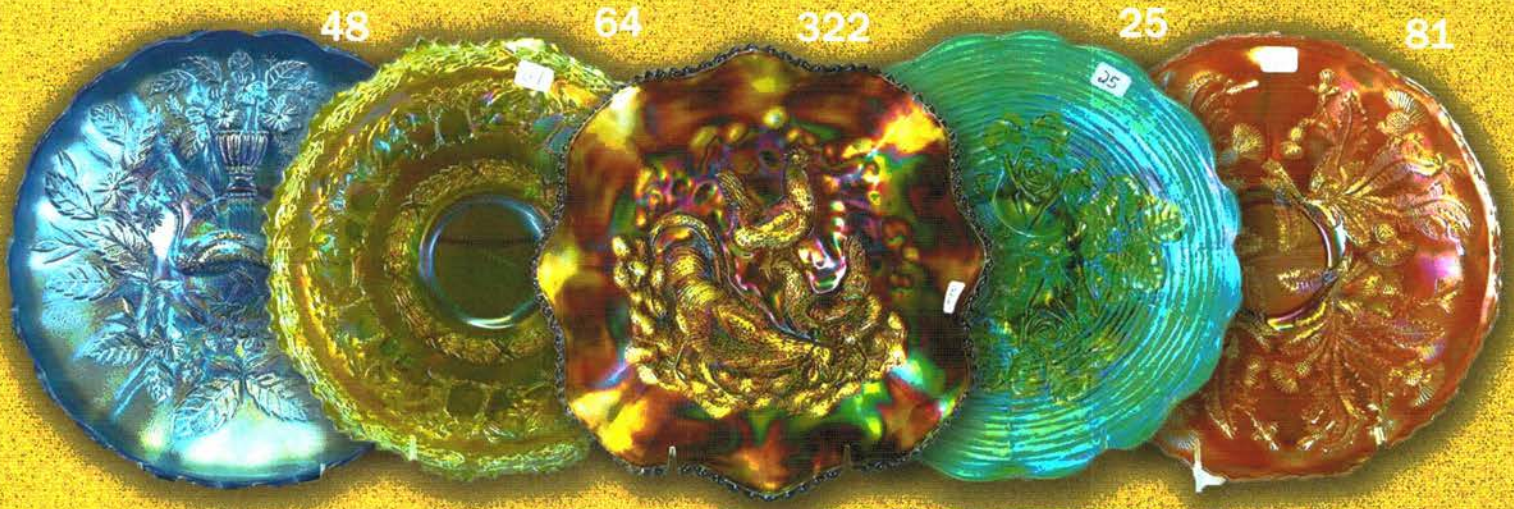
238

220

249

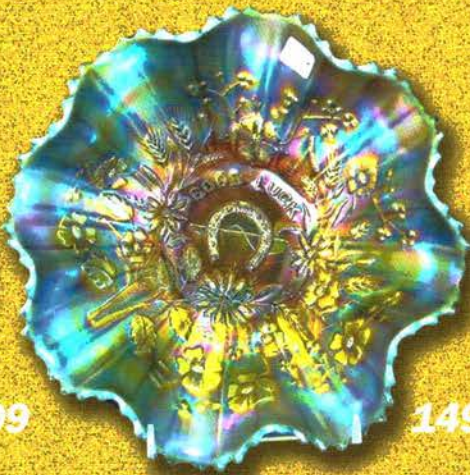
231

212

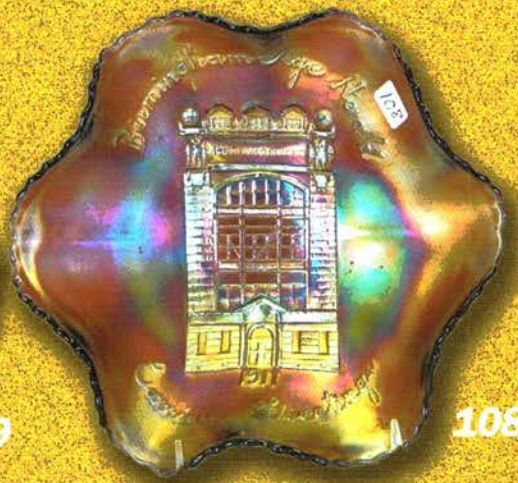




109



149



108



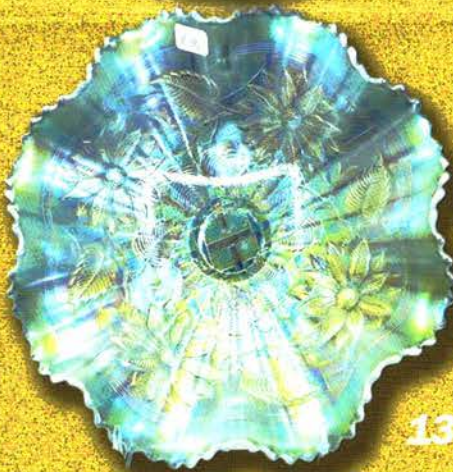
154



259



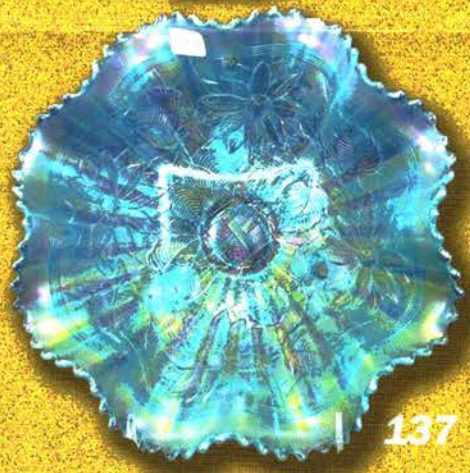
159



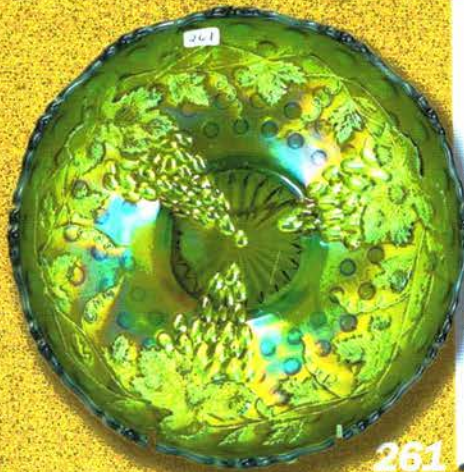
136



345



137



261



114

128



146



**EXTREMELY RARE COLOR, FROSTY W/
SUPER IRID.**

137. **POINSETTIA & LATTICE FTD RUFFLED BOWL - ICE BLUE - HAS RIBBED BACK, FABULOUS IRID.**
138. Poinsettia & Lattice ftd ruffled bowl - horehound - has ribbed back, can't imagine a prettier one in this color
139. Poinsettia & Lattice ftd ruffled bowl - blue - ribbed back, electric & super, has tiny pinpoint between points
140. Poinsettia & Lattice ftd ruffled bowl - purple - ribbed back, nice
141. Poinsettia & Lattice ftd ruffled bowl - marigold - dark, pretty
142. Horse Medallion 7" ruffled bowl - green - scarce color, pretty
143. Horse Medallion 7" ruffled bowl - amethyst - another scarce color, pretty
144. **Apple Tree 7 pc. water set - blue - super nice set with great irid.**
145. Daisy & Plume ftd rose bowl - ice green - very scarce, epoxy on foot
146. **M'BURG UNLETTERED RUFFLED COURT HOUSE BOWL - AMETHYST - EXTREMELY RARE VERSION OF THIS BOWL, SUPER NICE!**
147. **M'burg IC shaped Court House bowl + 10 cents - amethyst - rare shape, Court House postcard included, the Snells bought this from a lady who said her mother paid 10 cents for it**
148. Orange Tree shaving mug - red - scarce mug, nice
149. **GOOD LUCK RUFFLED BOWL W/RIBBED BACK - AQUA OPAL - VERY RARE & NICE, HAS BEAUTIFUL BUTTERSCOTCH IRID.**
150. **Good Luck ruffled bowl w/ribbed back - sapphire - super pretty**
151. Good Luck ruffled bowl w/BW back - green - scarce
152. Good Luck ruffled bowl w/BW back - purple - nice
153. M'burg Nesting Swan ruffled bowl - green - satin, pretty
154. **Concord 9" plate - green - dynamite irid. on this rare plate**
155. **Concord 9" plate - amethyst - rare plate, nice**
156. Grape & Cable perfume - purple - this has super electric irid.!
157. **M'burg Big Fish 3 in 1 edge bowl - amethyst - radium, very scarce and hard to find in radium**
158. **M'burg Big Fish 3 in 1 edge bowl - marigold - satin, nice**
159. **Norse N. Smith Real Estate & Insurance Rome GA. 6" adv. plate - amethyst - very rare plate, nice**
160. **Eagle Furniture Co. 6" adv. plate - amethyst - super pretty, scarce**
161. **Fern Brand Chocolates 6" adv. plate - amethyst - super nice, scarce**
162. **Hearts & Flowers 9" plate w/ribbed back - white - fabulous irid. on this plate, highly desirable, from the Joyce Seale Collection, SUPER!**
163. Lions 7" deep round bowl - blue - scarce
164. **Horse Medallion 7" plate - amethyst - rare color, 1 of 2 known, super**
165. **Horse Medallion 7" plate - powder blue - super pretty, rare**
166. **Horse Medallion 7" plate - blue - rare, nice**
167. Horse Medallion 7" plate - marigold - pretty
168. N's Bushel Basket - green - pretty
169. **M'burg Peacock at Urn giant ruffled compote - green - satin, pretty, as nice as they get**
170. **M'burg Peacock at Urn giant ruffled compote - amethyst - satin & super**
171. Cherry Circles card tray shaped bonbon - aqua - rare color, nice
172. **Peacock at the Fountain water pitcher - ice blue - super irid. w/dark color**
173. Peacock at the Fountain tumbler - ice blue - nice
174. **Illinois Soldiers and Sailors Home 7" plate - blue - super pretty example of this rare plate, great mold work**
175. **Illinois Soldiers and Sailors Home 7" plate - marigold - dark, super, another goodie**
176. Daisy & Drape flared out vase - aqua opal - butterscotch, pretty
177. **M'burg Deep Grape square shaped compote - amethyst - super pretty example, very rare shape**
178. **M'burg Deep Grape flared out compote - amethyst - a desirable piece**
179. **Peacock & Grape 8 ruffled bowl - red - scarce, highly desirable**
180. Peacock & Grape 8 ruffled bowl - marigold opal - very pretty
181. Peacock & Grape 8 ruffled bowl - white w/a tint of blue - very unusual coloring, unique
182. Peacock & Grape 8 ruffled bowl - vaseline - scarce, nick on point
183. Peacock & Grape 8 ruffled bowl - amethyst - super!
184. **Dandelion tankard water pitcher - ice blue - extremely rare & pretty, heat check in handle where handle applies, still a fabulous piece**
185. Dandelion tumbler - ice blue
186. **Dandelion tankard water pitcher - green - super pretty example, rare & desirable**
187. Dandelion tumbler - green
188. **Dandelion 6 pc. tankard water set - purple - super pretty pitcher, has manufacture burst bubble on base, one tumbler has ribbed interior**
189. **M'burg Multi Fruits & Flowers sherbet - green - rare & highly desirable item**
190. **Peacock & Grape 9" plate - blue - very scarce plate & nice, minor nick on point**
191. **Peacock & Grape 9" plate - marigold - loaded with yellow & pink irid., fabulous!**
192. N's Grape Leaves 3 in 1 edge bowl - green
193. N's Grape Leaves 3 in 1 edge bowl - amethyst - missing irid. in center
194. N's Grape Leaves 3 in 1 edge bowl - marigold
195. **M'BURG WILD ROSE KEROSENE LAMP W/ LADY MEDALLION INTERIOR - MARIGOLD - 11" TALL, 6 1/2" BASE, SUPER PRETTY FOR EXTREMELY RARE & LARGE LAMP**
196. **M'burg Wild Rose kerosene lamp - amethyst - 10" tall, 6" base, super nice**
197. Cherry Chain large IC shaped bowl - blue - has Orange Tree back, nice
198. **Stippled Three Fruits 9" plate w/ribbed back - aqua opal - loaded with opal, pretty plate**
199. Stippled Three Fruits 9" plate w/ribbed back - purple - has blue highlights
200. Luster Rose 4 pc. table set - marigold
201. **Lotus & Grape 9" plate - green - rare plate, nice**
202. **Lotus & Grape 9" plate - blue - very pretty for this rare plate**
203. **Geo. W. Getts Pianos Grand Forks, N.Dak. 6" adv. plate - amethyst - very pretty for these**

204. Brazier's Candies adv. handgrip plate – amethyst-scarce, pretty
205. Dreibus Parfait Sweets adv. ruffled bowl -amethyst super pretty irid., almost lavender
206. M'burg Bernheimer Brothers adv. Many Stars ruffled bowl – blue - very rare bowl & nice, minor chip on edge
207. Panther ftd round sauce - green - rare color
208. Hearts & Flowers ruffled compote - renninger blue very pretty even irid., rare color, super piece
209. Hearts & Flowers ruffled compote - green - rare color, pretty
210. Hearts & Flowers ruffled compote - white - nice
211. Princess Lamp w/cloth shade - purple - very pretty example, scarce
212. 1910 Detroit BPOE Elks ruffled bowl – amethyst - scarce, nice, highly desirable
213. 1910 Detroit BPOE Elks ruffled bowl – green - rare & desirable, nice
214. 1910 Detroit BPOE Elks ruffled bowl - blue - pretty, another rare one
215. Stippled Basket of Roses bonbon - purple - scarce bonbon
216. M'burg Big Fish IC shaped bowl – green - satin, pretty, rare bowl
217. Kittens 2 sides up dish - marigold
218. Stippled Three Fruits ruffled bowl w/ribbed back aqua opal - fabulous butterscotch irid., beautiful!
219. Palm Beach butter dish, cvd sugar & spooner - honey amber - scarce, nice
220. Fenton's Good Luck Heart & Vine ruffled bowl - marigold - very rare bowl, nice
221. Grape & Cable powder jar - green - nice
222. M'burg Absentee Leaf Strawberry tri-cornered compote - green – has a blank leaf, radium & nice, very rare shape, has minor pinpoint on top edge, very, very minor
223. M'burg Strawberry ruffled compote - amethyst - radium, nice
224. M'burg Strawberry ruffled compote - marigold - radium, nice
225. Chrysanthemum ruffled bowl – lavender - unusual base color & nice
226. Acorn Burrs 8 pc. punch set – green - only punch set in auction, it's a nice one
227. M'burg Leaf & Little Flowers sherbet shaped compote green - satin, nice
228. Milady 7 pc. tankard water set - blue - rare set, pretty
229. Dandelion mug - aqua opal
230. Dandelion mug - amethyst
231. M'burg Trout & Fly square shaped bowl - green - satin, very hard to find in this shape, nice
232. Stag & Holly spt ftd 9" plate - marigold - scarce, nice
233. Rose Show Variant ruffled bowl w/ribbed back - renninger blue - super pretty irid., very rare
234. Rose Show Variant ruffled bowl w/ribbed back - marigold - lots of yellow & pink irid.
235. M'burg Peacock at Urn IC sauce - amethyst - satin
236. Diamond Rib 21" funeral vase – green - has plunger base - great irid. from top to bottom, open bubble on top of one point
237. Grape & Cable cologne bottle – green - nice
238. M'burg Peacock master IC bowl - amethyst - radium, nice, rare bowl
239. Knotted Beads 10" crimped edge vase - lime green w/ marigold overlay - unusual color for this vase
240. N's Grape Leaves ruffled bowl - ice blue - very pretty irid., rare & desirable
241. M'burg Leaf & Little Flowers ruffled compote - amethyst - radium, nice
242. M'burg Leaf & Little Flowers ruffled compote - marigold - radium, nice
243. Blueberry water pitcher - blue - super pretty irid., very scarce
244. Blueberry tumbler - blue - nice
245. Blueberry water pitcher - marigold - very pretty with pinks & yellows
246. Blueberry tumbler - marigold
247. Wishbone ftd ruffled bowl – white - scarce, nice
248. Wishbone ftd ruffled bowl - purple
249. M'burg Roses & Fruits bonbon - amethyst - radium, super, rare M'burg bonbon
250. M'burg Roses & Fruits bonbon - green - radium, super, another goodie
251. Basketweave Open Edge JIP basket - red
252. Basketweave Open Edge JIP basket - green
253. Basketweave Open Edge JIP basket - aqua
254. Basketweave Open Edge JIP basket - powder blue
255. Basketweave Open Edge JIP basket - vaseline
256. Peacocks ruffled bowl w/ribbed back - aqua opal - pretty butterscotch irid. w/lots of opal
257. Peacocks ruffled bowl w/ribbed back - green - very pretty, scarce
258. Leaf Rays tri-cornered hldd nappy - blue - rare color, few known
259. Coin Dot ruffled 7" bowl - red - cherry red color, beautiful red piece
260. Good Luck PCE bowl w/BW back - marigold - super pretty
261. M'burg Vintage 10" IC shaped bowl w/Hobnail back - green – very, very rare bowl & nice, satin
262. Orange Tree hatpin holder - white - rare color & pretty, epoxy on foot
263. Orange Tree hatpin holder - green - scarce color, chip on foot
264. Orange Tree hatpin holder - blue - scarce
265. Orange Tree hatpin holder – marigold - pretty
266. Springtime water pitcher - green - super pretty example, a great one!
267. Springtime tumbler - green - nice
268. M'burg Campbell & Beesley Co. Spring Opening 1911 handgrip adv. plate - amethyst - very nice example for these
269. Exchange Bank Glendive Mont. 6" adv. plate - amethyst - great example
270. The Central Shoe Store Collinsville and St. Louis adv. handgrip plate - amethyst - rare advertising piece, nice
271. Dragon & Lotus IC shaped bowl - red - cherry red color, nice
272. Grape & Cable perfume lamp - purple - cute little miniature lamp, made from the perfume
273. M'burg Trout & Fly IC shaped bowl - green - satin w/nice irid.
274. Thistle 8 ruffled bowl - aqua - very rare color, pretty
275. Stippled Good Luck 9" plate w/ribbed back - blue - very rare plate & nice, minor nick on cleat of horseshoe
276. Orange Tree 9" plate - blue - super pretty plate w/ stretchy irid.
277. Orange Tree w/trunk 9" plate - marigold - also a beauty, stretchy irid., dark & super

278. Fine Cut & Roses rose bowl - dark ice blue or powder blue - neat rose bowl, the color is quite different than the usual ice blue
279. Fine Cut & Roses rose bowl - ice blue - very minor pinpoints on feet like usual
280. Fine Cut & Roses rose bowl - horehound - rare color, usual pinpoints on feet
281. Fine Cut & Roses rose bowl - green - very pretty
282. Fine Cut & Roses rose bowl - green - does not have collar base, very rare
283. **Pony ruffled bowl - ice green - very pretty example, scarce**
284. **Peacocks 9" plate w/ribbed back - green - pretty, scarce**
285. Peacocks 9" plate w/ribbed back - ice green - always desirable
286. **Cosmos & Cane spittoon shaped compote - honey amber - neat piece, highly desired**
287. Fenton's Peacock at Urn 9" plate - blue - super pretty, scarce
288. Fenton's Peacock at Urn 9" plate - marigold - nice
289. **Grape & Cable candle lamp - green - scarce & desirable, nice**
290. **Grape & Cable candle lamp - green - scarce & desirable, nice**
291. **Orange Tree Orchard 6 pc. water set - blue - very scarce set**
292. **Embroidered Mums ruffled bowl w/ribbed back - aqua - pretty, hard color to find**
293. Luster Rose 11" ruffled bowl - smoke - pretty
294. **M'burg Peacock 6" plate - amethyst - satin, rare**
295. **M'burg Peacock 6" plate - marigold - very rare to find a marigold one**
296. **Horse Medallion ftd nut bowl - red slag - pretty & rare**
297. Horse Medallion ftd nut bowl - aqua - another rare color & nice
298. Horse Medallion ftd nut bowl - smoke - has marigold overlay, rare color
299. **Wishbone epergne - green - pretty for these**
300. **Spector's Department Store Heart & Vine 9" plate - marigold - super, as nice as it gets**
301. **Rose Show ruffled bowl - aqua opal - very pretty w/ light butterscotch irid., the base of this has a light moonstone look to it**
302. Fanciful 9" plate - peach opal - pretty
303. **Stag & Holly lg size ftd IC shaped bowl - amethyst - very scarce color**
304. Stag & Holly lg size ftd IC shaped bowl - blue - electric & pretty
305. Tree Trunk 11 1/2" mid-size vase- ice blue-very rare, nice
306. Panther ftd ruffled master berry bowl - blue - super!
307. Stippled Good Luck ruffled bowl w/ribbed back - blue - nice
308. Stippled Good Luck ruffled bowl w/ribbed back - pastel marigold - very pretty, an unusual bowl, many would call this clambroth
309. Flying Bat hatpin - purple
310. Big Butterfly hatpin - purple
311. **M'burg Trout & Fly ruffled bowl - green - satin, fish is pretty, nice piece**
312. **M'burg Trout & Fly ruffled bowl - lavender/ amethyst - scarce**
313. Captive Rose 9" plate - green - scarce color, a nice one
314. Peacocks PCE bowl w/BW back - green - very pretty, rare with the BW back
315. Chrysanthemum spt ftd ruffled bowl - powder blue - very rare pattern for a spt ftd bowl
316. Grape & Cable banana boat - purple - pretty
317. Round Up 9" plate - blue - pretty example
318. Fenton's Grape & Cable ruffled ftd fruit bowl - green - Persian Medallion interior, 1/2" heat check in collar base
319. **Poppy Show ruffled bowl - ice blue - very scarce & highly desirable**
320. Persian Medallion chop plate - blue - scarce
321. Grape & Cable dresser tray - green - nice
322. **FARMYARD SQUARE RUFFLED BOWL - PURPLE - SUPER NICE, ONE OF THE MOST DEMANDED PATTERNS IN CARNIVAL GLASS**
323. Basketweave Open Edge square basket - aqua
324. **M'burg Night Stars bonbon - marigold - radium, dark, just fantastic!**
325. **M'burg Night Stars bonbon - amethyst - radium, super**
326. **Horse Medallion round bowl - red - rare & desirable, nice**
327. Stippled Good Luck PCE bowl w/ribbed back - renninger blue - rare color & nice
328. **Coral 9" plate - marigold - scarce, nice**
329. Leaf & Beads rose bowl - aqua opal - nice
330. **Cvd Frog - white - rare color**
331. **Cvd Frog - ice green - rare, nice**
332. **Cvd Frog - marigold - rare, nice**
333. **Jockey Club ruffled adv. bowl - amethyst - maybe the prettiest one I've seen**
334. **Dorsey and Funkenstein Fine Furniture adv. ruffled bowl - amethyst - very rare piece, nice**
335. **E.A. Hudson Furniture Co. adv. 6" plate - amethyst super pretty!**
336. Dragon & Lotus spt ftd ruffled bowl - lime green opal chip on cleat
337. **Tree Trunk 6" squatty vase - ice blue - rare, has super irid.!**
338. Basketweave Open Edge ruffled basket - aqua
339. Peacocks PCE bowl w/ribbed back - amethyst - pretty, has the right look, some would call this lavender
340. **M'burg Hobnail spittoon - marigold - super example**
341. April Showers 10" vase - blue
342. **Acorn Burrs 7 pc. water set - green - pitcher is super, great set!**
343. **Rosalind Variant ruffled compote - green - very pretty**
344. Blackberry ruffled ftd candy dish - ice green - has Daisy & Plume back, super
345. **NUART Chrysanthemum chop plate - amber - fantastic irid. on this rare plate**
346. **M'burg Big Fish ruffled bowl - amethyst - radium, rare, minor pinpoints on base**
347. Plume Panels 12" vases (2) - green - sold as pair
348. **ROSE TREE IC SHAPED BOWL - BLUE - ELECTRIC & FANTASTIC, EXTREMELY RARE, NOT MANY PEOPLE EVEN KNOW THIS PATTERN, THESE ARE GREAT!**
349. **ROSE TREE IC SHAPED BOWL - MARIGOLD - IF YOU WANT A BEAUTIFUL MATCH, THIS BOWL HAS EVERYTHING YOU WANT!**
350. Dolphin candlesticks - ice blue
351. Dolphin fan vase - ice blue
352. Dolphin candy dish - ice blue

Seeck Auctions
PO Box 377
Mason City, Iowa
50402

Presorted
First Class Mail
U.S. Postage
Paid
Mail Expeditors



195

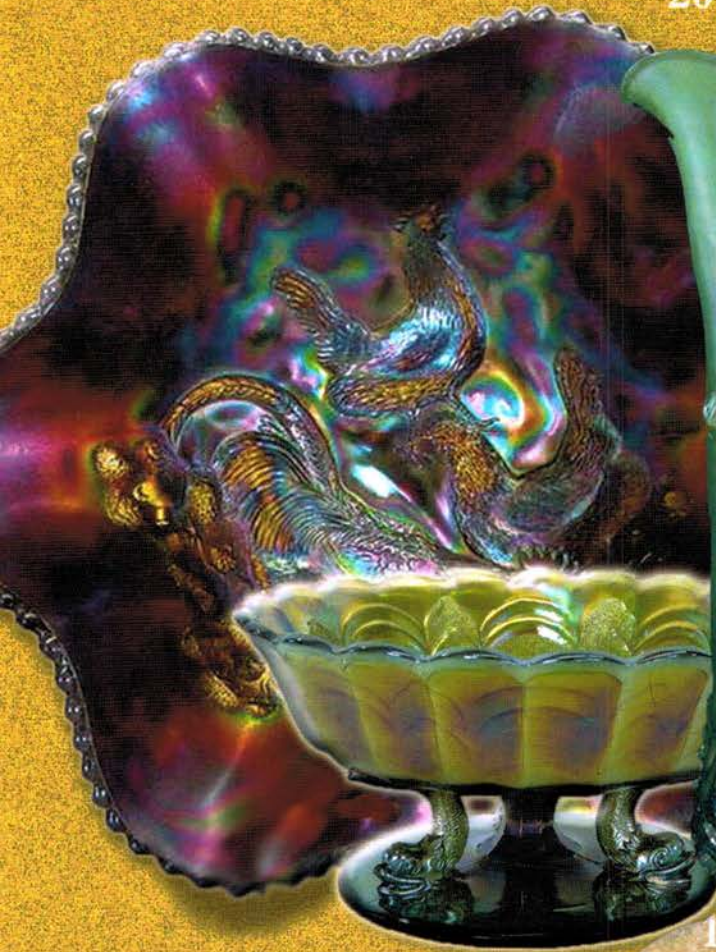
2012 Auction
Carnival Glass
Sat., April 28, 9:30 a.m.
Kansas City, Mo.

T5 P1 110
LEE MARKLEY
BOX 306
MENTONE IN 46539-0306



20

Open
to the public



90

102



24

56