

Texas Carnival Glass Club Convention

Carnival Glass 2012 AUCTION

Saturday, March 10, 9:30 a.m.

Open to
the Public

Crown Plaza
Dallas Suites



Jim & Jan Seeck

Seeck Auctions

641-424-1116

Crowne Plaza Dallas-Suites
7800 Alpha Road, Dallas, Texas

NO BUYER'S PREMIUM

OPEN TO THE PUBLIC

For Online Auction Catalog, Check our Website: www.seeckauction.com

Online absentee bidding closes, Friday, March 9, at 6 p.m. CST

This year's Texas convention auction glass comes right out of the state of Texas – the **Ed and Marilyn Gaida Collection**. Ed and Marilyn were some of the "Early" Carnival Glass collectors. Ed helped found the International Carnival Glass Association and they both have also been an important part of the Texas Club history. We've added a few pieces from other consignors to help round out the auction. Make your plans now to attend!

If staying at the Hotel, call direct for **room reservations: 972-233-7600 (ext. 2)** Let them know you are with the Texas Carnival Glass Club. **Group rate ends February 17th, 2012.** Texas Club Convention info: Contact Club President Emmett Morgan at: 979-836-7896 or president@txcarnivalglass.org

Visit the Texas Carnival Glass Club Website: www.texas carnivalglass.org

..... **AUCTION INFORMATION**

Terms: Cash or Check, VISA, MasterCard & Discover accepted w/proper ID. **4% Clerking Fee** on all purchases except for payment of cash or check. Announcements made day of sale take precedence over any printed information.

**** Sales Tax will be charged, please bring your tax-exempt numbers.**

Also, please email us and we will put you on our email mailing list for auction notices.

We have 3 options for absentee bidding:

1) If you DO NOT have internet access or access to our website, you can:

Call us by phone to enter your bids at (641)424-1116 **OR** By sending the numbers of the item(s) desired and the amount bid on each to: Seeck Auctions, PO Box 377, Mason City, Iowa 50402. (The mail has not been very dependable. We would prefer you call us with your bids rather than send them in a letter.)

- All written and called in bids will be entered into the online catalog by us.
- Have all bids in by **Thurs., March 8.**

2) Enter your bids from our website into our online catalog through the Auction Flex system.

◆ When you get to the online catalog, you will need to login as a bidder. For the first time you will need to **set up your account** by creating a username and password. This will include filling out a form with your name, address, etc. You will also need to **register for the auction** which will ask you to enter a valid credit card number. This card will be validated by a \$1 charge to your card. This will only happen once and you will now be able to enter bids through our online catalog by just logging in with your user name and password.

◆ You will use this user name and password for all our auctions. You are not required to pay by credit card if you are successful. This is just a safeguard for us if someone does not pay. We will let you know what you owe us through an email and you can decide how you would like to pay us.

◆ An exciting advantage of entering your bids online yourself, is the option to be notified by email if you are outbid on an item. You will know when you are outbid on an item and you can increase your bid on that item or bid on something else. **There will be a cutoff date and time for entering your bids online.** After this time has passed, you will not be able to enter your bids from our online catalog.

◆ Remember that just because you are the high bidder in the online catalog, this does not mean you have won the item. Your bid will still need to beat the floor bidders and live phone bidders. This system will run our absentee bids just as we did before. You will still be able to buy the item lower than your online bid unless someone on the floor bids you higher.

3) Live phone bidding is available on pieces with an estimated sale price of \$500 or more. If you would like to participate in live phone bidding, contact us by **the Tuesday before the auction Tuesday, March 6.** We will need to know the lot# and the phone number that you can be reached at on the day of the auction. We will also need your home phone number if different than the above number. Please call with questions: 641-424-1116.

There is a \$7 handling charge for each successful bid. Shipping and insurance charges are additional.

Bidders will be notified by phone/email if their bid(s) are successful.

This will be done 1 - 3 days after the auction.

If you do not receive an item that sold for less than your bid, assume we cancelled your bid because the item had a severe manufacture problem, damage or was not listed correctly.

BID INCREMENTS: \$1 - \$100/\$5 \$100 - \$200/\$10 \$200 - \$700/\$25 \$700 - \$1,500/\$50
 \$1,500 - \$3,000/\$100 \$3,000+ Auctioneer's Discretion

- _____ 1. Hobstar Bands tumblers (2) - marigold -
sold as pair
- _____ 2. Floral & Grape tumbler - blue
- _____ 3. Stork & Rushes tumbler - blue
- _____ 4. N's Waterlily & Cattails tumbler - marigold
- _____ 5. Wishbone tumbler - purple
- _____ 6. Field Flower tumbler - purple
- _____ 7. Leaf Tiers tumbler - marigold - dark, pretty,
minor pinpoint on one foot
- _____ 8. Peach tumbler - blue - nice
- _____ 9. Diamond Lace tumbler - purple - pretty
- _____ **10. Cone & Tie tumbler - purple - super pretty
& extremely rare, a highly sought after
tumbler**
- _____ 11. Robin tumbler - marigold
- _____ **12. N's Dandelion tumbler - lavender slag -
nice, rare color**
- _____ 13. Star Medallion lg size tumbler - marigold
- _____ 14. Orange Tree Scroll tumbler - blue - pretty
- _____ 15. Heavy Iris tumbler - purple
- _____ 16. Singing Birds tumbler - green
- _____ **17. Wisteria tumbler - lime green - very rare,
hard to find tumbler**
- _____ 18. Butterfly & Fern tumbler - green
- _____ 19. Cut Cosmos tumbler - marigold
- _____ **20. Chatelaine tumbler - purple - scarce, pretty**
- _____ 21. Concave Diamond tumbler - vaseline
- _____ 22. Rambling Rose tumbler - blue
- _____ 23. Harvest Flower tumbler - marigold
- _____ 24. Wreathed Cherry tumbler - purple
- _____ 25. Luster Rose tumbler - purple
- _____ 26. Greek Key tumbler - purple - nice
- _____ 27. Jacobean Ranger tumbler - marigold
- _____ **28. M'burg Gay Nineties tumbler - amethyst -
rare & desirable**
- _____ 29. Double Star tumbler - green
- _____ 30. Blackberry Block tumbler - blue
- _____ **31. M'burg Hanging Cherries tumbler - green -
radium, pretty**
- _____ 32. Grape & Gothic Arches tumbler - blue
- _____ 33. Circle Scroll tumbler - purple - scarce
- _____ 34. Imperial Grape tumbler - purple
- _____ 35. Bouquet tumbler - blue
- _____ 36. Jeweled Heart tumbler - marigold
- _____ 37. Ten Mums tumbler - blue
- _____ 38. Checkerboard tumbler - amethyst - chip on
side of bottom edge
- _____ 39. Fluffy Peacock tumbler - amethyst
- _____ 40. Grapevine Lattice tumbler - white
- _____ 41. Orange Tree Orchard tumbler - blue
- _____ 42. White Oak tumbler - marigold
- _____ 43. Springtime tumbler - green - chip on base, pretty
- _____ 44. Flute #2 tumbler - purple - super pretty
- _____ 45. Flute #3 tumbler - purple - pretty
- _____ 46. Flute #1 tumbler - purple - pretty
- _____ 47. Palm Beach tumbler - honey amber
- _____ 48. Soda Gold tumbler - smoke
- _____ 48a. Cosmos & Cane tumbler - marigold
- _____ 49. M'burg Diamonds tumbler - aqua - scarce
color
- _____ 50. M'burg Diamonds tumbler - amethyst - chip
on base
- _____ 51. Strawberry Scroll tumbler - blue - nice
- _____ 52. Orange Tree ftd tumbler - blue - nice
- _____ 53. Octagon tumbler - purple
- _____ 54. Grape & Cable tankard tumbler - purple
- _____ 54a. Grape & Cable tumbler - marigold
- _____ 55. Fentonia tumbler - blue
- _____ 56. Butterfly & Berry tumbler - green - super
pretty
- _____ **57. God & Home tumbler - blue - pretty**
- _____ 58. Fashion tumbler - smoke
- _____ 59. M'burg Feather & Heart tumbler - amethyst
- _____ 60. Dahlia tumbler - amethyst
- _____ 61. Enameled Cherries tumbler - blue
- _____ 62. Acorn Burrs tumbler - purple
- _____ 63. Lily of the Valley tumbler - blue- nick on base
- _____ 64. Beaded Shell tumbler - marigold
- _____ 65. Milady tumbler - blue
- _____ 66. Apple Tree tumbler - white
- _____ 67. Lattice & Grape tumbler - blue
- _____ 68. Paneled Dandelion tumbler - blue
- _____ 69. Inverted Strawberry tumbler - amethyst -
minor rub on top edge
- _____ 70. Four Seventy Four tumbler - marigold
- _____ 71. Grape Arbor tumbler - ice blue - minor nick
on base
- _____ 72. Oriental Poppy tumbler - purple - pretty
- _____ 73. N's Swirl tumbler - marigold
- _____ 74. Blueberry tumbler - blue - berry in pattern
has been chipped off
- _____ 75. Pretty Panels tumbler - ice green
- _____ **76. Cosmos & Cane tumbler - honey amber -
has "JR Millner" advertising in base**
- _____ 77. Raspberry tumbler - purple - pretty
- _____ **78. M'burg Perfection tumbler - amethyst -
super, scarce**
- _____ 79. Lot of 8 marigold tumblers - all to go
- _____ 80. Contemporary tumblers (2) and Indian
toothpicks (2) - all to go
- _____ 81. Lot of 6 blue tumblers - all with damage -
all to go
- _____ 82. Lot of 7 purple tumblers - all with damage -
all to go

- ___ 83. Lot of 3 marigold tumblers - all with damage - all to go
- ___ 84. Iris buttermilk goblets (2) - green - sold as pair
- ___ 85. Iris buttermilk goblets (2) - amethyst - sold as pair
- ___ 86. Iris buttermilk goblets (2) - marigold - sold as pair
- ___ 87. Persian Garden 6" plate - marigold
- ___ 88. Persian Medallion 6" plate - marigold
- ___ 89. Single Flower framed crimped edge 8" plate - peach opal
- ___ **90. M'burg Rose Columns vase - green - super rare vase & nice**
- ___ **91. M'burg Rose Columns vase - amethyst - very rare & highly desired**
- ___ 92. Tree Trunk 6 1/2" squatty vase - purple
- ___ 93. Tree Trunk 7" squatty vases (2) - marigold - one with minor heat check in base, sold as pair
- ___ 94. Daisy & Plume stemmed rose bowl - marigold
- ___ 95. Imperial Grape 11" ruffled bowl - purple - super pretty
- ___ 96. Apple Blossom Twigs ruffled bowl - peach opal - scarce
- ___ 97. Imperial Grape ruffled bowl - marigold - dark, pretty
- ___ 98. Imperial Grape ruffled bowl - pastel marigold - pretty
- ___ 99. Star & File rose bowl - marigold
- ___ **100. Good Luck ruffled bowl w/ribbed back - aqua opal - pastel & super, as nice as they get**
- ___ **101. Good Luck ruffled bowl w/ribbed back - blue - electric & super, fantastic piece**
- ___ 102. Honeycomb & Beads banana boat shaped ruffled dish - peach opal
- ___ 103. Open Rose deep round bowl - clambroth - super pretty irid.
- ___ 104. Open Rose deep round bowl - green
- ___ **105. M'burg Marilyn 7 pc. water set - marigold - pitcher is radium & beautiful, rare set, two tumblers w/chips**
- ___ **106. M'burg Marilyn 7 pc. water set - amethyst - scarce, nice**
- ___ 107. Little Barrel - marigold - nice
- ___ 108. Grape & Cable pin dish - purple - made from punch cup
- ___ 109. Swirl water pitcher & 2 tumblers - marigold
- ___ **110. Stag & Holly lg size ftd IC shaped bowl - green - super pretty, rare color**
- ___ 111. Stag & Holly lg size ftd IC shaped bowl - marigold
- ___ 112. Scroll Embossed ruffled sauce - marigold - has File back, super
- ___ 113. Strawberry 9" plate w/BW back - purple - nice
- ___ 114. Strawberry 9" plate w/BW back - marigold - pretty
- ___ **115. Jeweled Hearts ftd water pitcher- marigold- hard pitcher to find, nice**
- ___ 116. Wishbone ftd ruffled bowl - marigold
- ___ 117. Fenton's Thin Rib 18" vase - blue
- ___ 118. Field Thistle 10" chop plate - marigold - rare, hard to find
- ___ 119. Basketweave Open Edge 2 sides up basket - powder blue
- ___ **120. Grape & Cable 15 pc. master punch set - purple - super pretty set**
- ___ **121. Grape & Cable 13 pc. master punch set- marigold - also a hard set to get, a sharp point on point has minor chip, punch cups are stippled**
- ___ 122. Pattern glass pcs. (4) - ruby flash - sold as set
- ___ 123. Captive Rose 9" plate - blue - scarce
- ___ 124. Scales tri-cornered dish - peach opal
- ___ **125. Rose Show ruffled bowl - aqua opal - pastel & super! this is a beautiful one!**
- ___ 126. N's Bushel basket - ice green - scarce
- ___ 127. N's Bushel basket - white - nice
- ___ 128. N's Bushel basket - lavender - scarce color
- ___ 129. N's Bushel basket - purple
- ___ 130. N's Bushel basket - blue - electric highlights
- ___ 131. N's Bushel basket - marigold
- ___ **132. Little Flowers chop plate - marigold - very rare plate, silvery**
- ___ 133. Leaf & Beads rose bowl - aqua opal - super pretty
- ___ 134. Soutache dome ftd crimped edge ruffled bowl - peach opal - nice
- ___ **135. God & Home 7 pc. water set - blue - extremely rare, have not sold one for a while, very nice, one tumbler w/chip**
- ___ 136. Four Seventy Four milk pitcher - green - minor nick on flat of base
- ___ 137. Four Seventy Four milk pitcher- marigold- nice
- ___ **138. Old Rose Distilling Stippled Grape & Cable Variant 9" plate w/ribbed back - green - super example, has reddish irid.**
- ___ 139. Enameled Magnolia & Drape water pitcher - marigold
- ___ 140. Holly 9" plate - blue - nice
- ___ 141. Holly 9" plate - marigold - minor roughness on base
- ___ 142. Rustic 9 1/2" vase - white - nice
- ___ 143. Nautilus whimsy creamer - peach opal

- ___ 144. Garden Path Variant deep round sauce - peach opal
- ___ **145. Dahlia water pitcher - marigold - pretty**
- ___ 146. Rococco vase - smoke - super pretty, typical minor pinpoint on base
- ___ 147. Thin Rib & Drape 5" vase - marigold
- ___ **148. Three Row Open Edge ruffled bowl - celeste blue - super pretty, scarce**
- ___ 149. Flowering Dill CRE JIP hat - marigold
- ___ **150. Sweetheart cracker jar - green - one of two that I know of, a great piece of Cambridge, no one has had the opportunity to buy one of these for a long time, minor pinpoint on knob of lid, WOW!**
- ___ 151. Peacock & Dahlia IC shaped bowl - marigold-lacks irid.
- ___ 152. Pansy ruffled bowl - purple - electric, super
- ___ 153. Pansy ruffled bowl - smoke - super
- ___ 154. Fisherman's mug - purple
- ___ **155. Peacocks 9" plate w/ribbed back- marigold-pretty**
- ___ **156. Peacocks 9" plate w/ribbed back- ice green-pretty example**
- ___ 157. Thin Panels 6" ruffled vase - purple
- ___ **158. Orange Tree loving cup - green - very scarce color**
- ___ 159. M'burg Grape Wreath crimped edge 7" bowl - marigold - radium & super
- ___ **160. Cosmos & Cane 5 pc. tankard water set - honey amber - super rare & super beautiful**
- ___ 161. Miniature Morning Glory 5" vase - smoke - pretty
- ___ 162. M'burg Hobnail spittoon - marigold - very nice, minor roughness on one hob
- ___ 163. Pattern glass creamers & spooners - red w/gold - not Carnival Glass - all to go
- ___ 164. Corinth 8" JIP vase - peach opal
- ___ **165. Peacocks ruffled bowl w/ribbed back - aqua opal - pastel & super w/fabulous opal, not many better**
- ___ **166. Peacocks ruffled bowl w/ribbed back - marigold - nice**
- ___ 167. Thistle CRE bowl - amethyst
- ___ **168. Tree Trunk 10" vase - blue - electric, nice**
- ___ 169. Tree Trunk 10" vase - purple - pretty
- ___ 170. Thistle banana boat - blue - very pretty, scarce
- ___ 171. Beaded Bullseye 7 1/2" vase - purple - nice
- ___ 172. Carolina Dogwood ruffled bowl - blue opal - light on irid.
- ___ 173. Carolina Dogwood ruffled bowl - marigold on moonstone - very pretty
- ___ 174. Grape & Cable master punch bowl base - marigold - if you need one, this is a nice one
- ___ **175. Inverted Strawberry 6 pc. tankard water set - amethyst - pitcher is rare & pretty, three tumblers have roughness on top edge**
- ___ 176. Kittens cereal bowl - marigold
- ___ 177. Kittens cereal bowl - powder blue - rare color
- ___ 178. Kittens plate - marigold - includes bonus of powder blue plate w/two chips
- ___ 179. Kittens 4 sides up dish - marigold
- ___ 180. Kittens ruffled dish - marigold
- ___ 181. Kittens 2 sides up dish - marigold
- ___ 182. Kittens cup, vase & ruffled bowl - marigold - all with damage
- ___ 183. Kittens 4 sides up dish - marigold
- ___ 184. Pattern Glass, Paneled Grape? 5 pc. water set- clear w/gold leaves & purple grapes, not Carnival Glass
- ___ 185. Iris buttermilk goblets (2) - green- sold as pair
- ___ 186. Iris buttermilk goblets (2)- amethyst- sold as pair
- ___ 187. Iris buttermilk goblets (2) - marigold- sold as pair
- ___ 188. Heavy Grape 8" plate - amber - rare color & nice
- ___ 189. Heavy Grape 8" plate - purple - nice, has lavender type irid.
- ___ **190. Morning Glory 12" funeral vase -marigold- has 9 1/2" mouth, pretty**
- ___ 191. Dragon & Lotus ruffled bowl - blue
- ___ 192. Dragon & Lotus ruffled bowl - marigold
- ___ 193. Garden Path Variant 6" plate - white - scarce pattern, light on irid.
- ___ 194. Fashion 6 pc. punch set - marigold
- ___ **195. Grape & Cable 5 pc. tankard water set - purple - rare set, nice, pinpoint on one tumbler**
- ___ **196. Grape & Cable cracker jar - purple - pretty**
- ___ 197. Grape & Cable powder jar - purple - nice
- ___ 198a. Grape & Cable lg size fruit bowl or orange bowl - purple - one point broke off
- ___ 198. Grape & Cable small size fruit bowl - purple
- ___ 199. Grape & Cable cologne bottles (2) - purple - both super nice, sold as pair
- ___ 200. Grape & Cable cologne bottle - purple
- ___ 201. Grape & Cable cologne bottles (2) - marigold- both nice, sold as pair
- ___ 202. Grape & Cable butter dish - purple - bottom rim of lid has manufacture roughness
- ___ 203. Grape & Cable cvd sugar - purple - thumbprints around base have damage
- ___ 204. Grape & Cable creamer - green
- ___ 205. Grape & Cable spooner - green

- _____ **206. Stippled Grape & Cable humidor - blue - super rare & pretty**
- _____ 207. Grape & Cable dresser tray - purple - two minor rough spots on edge
- _____ 208. Grape & Cable pin tray - purple
- _____ **209. Grape & Cable whiskey decanter - purple - very rare especially w/out any damage**
- _____ 210. Grape & Cable shot glasses (3) - purple - one perfect, one w/minor pinpoint, one w/severe damage
- _____ **211. Grape & Cable perfume – purple - fabulous example**
- _____ 212. Grape & Cable 9” plate w/BW back - purple - has nice, stretchy irid.
- _____ 213. Grape & Cable banana boat - purple - scarce
- _____ 214. Grape & Cable banana boat - marigold - scarce
- _____ 215. Grape & Cable creamer - marigold
- _____ **216. Grape & Cable hatpin holder - marigold - super dark example w/fantastic irid.**
- _____ 217. Floral & Grape water pitcher & one tumbler - blue - nice
- _____ 217a. Floral & Grape water pitcher & one tumbler - amethyst - pretty
- _____ 218. Acorn Burrs master berry bowl - green
- _____ 219. Pillar Flute rose bowl - clambroth
- _____ **220. Good Luck PCE bowl w/ribbed back- blue- nice w/electric highlights**
- _____ 221. Good Luck PCE bowl w/ribbed back - marigold - minor pinpoint on base
- _____ 222. Ripple 8” vase - purple - has 3 3/8” base
- _____ 223. N’s Thin Rib 9” vase – green
- _____ 224. Ski Star lg ruffled bowl - peach opal
- _____ **225. Inverted Thistle water pitcher - purple - extremely rare & beautiful, crack across base**
- _____ 226. Nautilus whimsy creamer - peach opal - sliver on underside of spout
- _____ 227. Nautilus whimsy sugar - peach opal - pinpoint on base
- _____ 228. Persian Medallion 3 in 1 edge lg size bowl - green - very scarce & pretty
- _____ 229. Beaded Cable rose bowl - blue opal - not Carnival Glass
- _____ **230. Memphis 12 pc. punch set - green - scarce, 3 chips in pattern on bowl, small chip on top of base**
- _____ 231. Decorated 7 pc. water set - blue - not Carnival Glass
- _____ 232. Stippled Three Fruits 9” plate w/ribbed back - blue- pretty, has scratches on fruit, chip on base
- _____ 233. Four Pillars 10” vase - aqua opal - repaired chip on foot
- _____ 234. Imperial Grape ruffled compote - marigold
- _____ **235. Luster Rose ftd fruit bowl - red - very rare, missing irid. on roses, two minor nicks on outside edge**
- _____ 236. Acanthus milk pitcher - marigold
- _____ 237. Leaf Chain ruffled bowl - blue - super irid., base has been pushed in at manufacture
- _____ 238. Daisy & Plume ftd rose bowl - marigold
- _____ 239. Pillow & Sunburst ruffled bowl - peach opal
- _____ **240. Rose Show 9” plate - purple - pretty, rare, nick on rose**
- _____ 241. Carnival Hobstar cvd cracker jar - marigold
- _____ 242. Inverted Feather cracker jar - green
- _____ 243. Orange Tree 9” plate - marigold - light
- _____ 244. N’s #658 candlestick - russet - 8” tall
- _____ **245. M’burg Hobstar & Feather giant rose bowl- amethyst - cracked, has one chipped tooth, great shelf piece**
- _____ 246. Imperial Grape punch cups (5) - purple - nice ones, all to go
- _____ 247. Lions round bowl - powder blue - silver irid.
- _____ 248. Vintage crimped edge ruffled bowl- blue opal- not Carnival Glass
- _____ 249. Target 10” vase - peach opal - minor nick on base
- _____ **250. Zippered Heart whimsy ruffled giant vase - marigold- nice irid., only one I’ve seen like it**
- _____ 251. Imperial Grape water bottle - marigold
- _____ 252. M’burg Strawberry ruffled compote - marigold - radium, nice
- _____ 253. Peacock at the Fountain spooner - purple - very pretty
- _____ 254. Raindrops dome ftd ruffled bowl - peach opal
- _____ **255. Cosmos & Cane 4 pc. table set - honey amber - very rare set, sugar has chip on base & on lid**
- _____ 256. Pansy pickle dish - marigold
- _____ 257. Raspberry milk pitcher - purple - scarce
- _____ 258. Waterlily ftd ruffled sauce - aqua - scarce color
- _____ 259. Rib & Panel 8” vase - marigold
- _____ **260. Good Luck 9” plate w/BW back- marigold- scarce**
- _____ 261. Dugan Cherries 6” crimped edge plate - purple - nice
- _____ 262. M’burg Holly Sprig Variant 8” IC shaped bowl - marigold - radium, nice
- _____ 263. Six Petal ruffled bowl - white - nice
- _____ 264. Scroll Embossed deep ruffled bowl - purple - pretty
- _____ 265. Large 8” tall fan vase - marigold - unusual w/a beaded pattern, nice irid.

- ___ 266. Cvd Swan - amethyst - chip on top rim, chip on bottom of base
 ___ 267. Feather Stitch ruffled bowl - blue - scarce pattern
 ___ 268. Beaded Bullseye 11" vase - purple - super pretty
 ___ 269. Apple Blossom Twigs IC shaped bowl - peach opal - scarce
 ___ 270. Flute toothpick - purple
 ___ 271. Flute toothpicks - green - chip on base
 ___ 272. Flute toothpicks (2) - marigold - one w/ roughness, both to go
 ___ 273. Blackberry Spray JIP CRE hat - reverse amberina - super nice
 ___ 274. Fenton Peacock at Urn ruffled bowl - marigold - dark, pretty
 ___ **275. Inverted Strawberry spittoon - green - very rare & desirable**
 ___ 276. Basketweave Open Edge JIP basket - red
 ___ 277. Acanthus chop plate - marigold - scarce, nice
 ___ 278. Hearts & Flowers ruffled compote - white - nice
 ___ 279. Persian Medallion rose bowl - white - scarce color
 ___ **280. M'burg Marilyn water pitcher - amethyst - nice**
 ___ **281. M'burg Leaf & Little Flowers ruffled compote - green - radium, nice**
 ___ 282. Buzz small size cruet - green - outside edge of top of bottle has chips, stopper perfect
 ___ 283. Stippled Three Fruits medallion spt ftd ruffled bowl - marigold - soft pastel irid.
 ___ 284. Stippled Rays ruffled sauce - aqua - bought in London
 ___ **285. Owl hatpin - dark - rare**
 ___ **286. Scarab Shell hatpin - dark - scarce**
 ___ **287. Strawberry hatpin - amber - scarce**
 ___ 288. Faceted Dome hatpin - dark
 ___ 289. Pair of hatpins (2) - dark - long one has nick on top of point
 ___ 290. Polo Player ashtray - marigold
 ___ 291. Horse Medallion ftd nut bowl - lime green with marigold overlay - nice
 ___ 292. Coral IC shaped bowl - marigold - super pretty
 ___ 293. Nippon PCE bowl w/ribbed back - ice blue
 ___ 294. Lions IC shaped bowl - marigold - nice
 ___ 295. Iris buttermilk goblet - green
 ___ 296. Iris buttermilk goblets (3) - amethyst - all to go
 ___ 297. Iris buttermilk goblets (2) - marigold - both to go
 ___ 298. Apple Tree water pitcher - marigold
 ___ 299. Palm Beach spooner - white - nice
 ___ 300. Hyacinth GWTW lamp shade - marigold - extremely rare, base is broken but have all the metal parts
 ___ 301. Petal & Fan crimped edge 6" plate - purple - nice
 ___ 302. Town Pump - purple - absolutely super irid., unfortunately, one point made of epoxy
 ___ 303. Stippled Three Fruits ruffled bowl w/ribbed back - marigold - nice
 ___ 304. Dragon & Lotus spt ftd deep round nut bowl - marigold
 ___ 305. Orange Tree hatpin holder - blue - spectacular irid., couple nicks on feet, should not hurt
 ___ **306. Homestead Chop plate - purple - super pretty, highly desirable**
 ___ 307. Lot of Carnival Glass
 ___ 308. Lot of contemporary Carnival Glass
 ___ 309. Lot of Carnival Glass
 ___ 310. Lot of Non Carnival Glass items
 ___ 311. Lot of Carnival Glass - these last 10 lots belong to the Texas Carnival Glass Club and all proceeds go to them
 ___ 312. Lot of Carnival Glass
 ___ 313. Lot of Carnival Glass
 ___ 314. Lot of Carnival Glass
 ___ 315. Lot of Carnival Glass
 ___ 316. Lot of Carnival Glass
 ___ 317. Lot of Carnival Glass
 ___ 318. Lot of Carnival Glass
 ___ 319. Lot of Carnival Glass
 ___ 320. Lot of Carnival Glass

Seeck Auctions
PO Box 377
Mason City, Iowa
50402

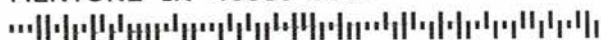
Presorted
 First Class Mail
 U.S. Postage
 Paid
 Mail Expeditors



175

2012 Auction
Carnival Glass
Sat., March 10,
9:30 a.m.
Dallas, Texas

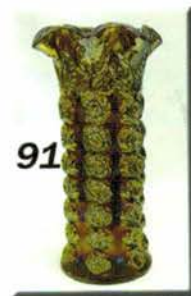
T4 P1 220
 LEE MARKLEY
 PO BOX 306
 MENTONE IN 46539-0306



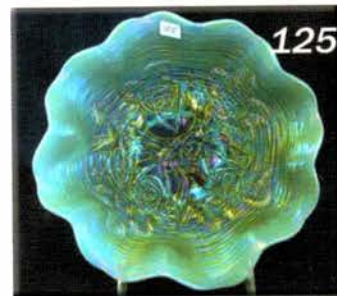
135



105



91



125



160



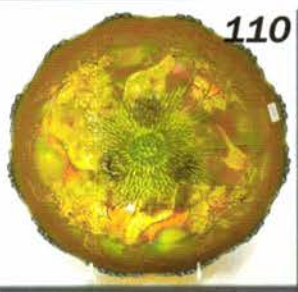
195



206



285



110



165



306



250