

Southern California Carnival Glass Club

Carnival Glass AUCTION

Open to the public

56 Ayers
Country
Suites Hotel
Ontario,
California

Saturday,
March 3, 2012
9:30 a.m.

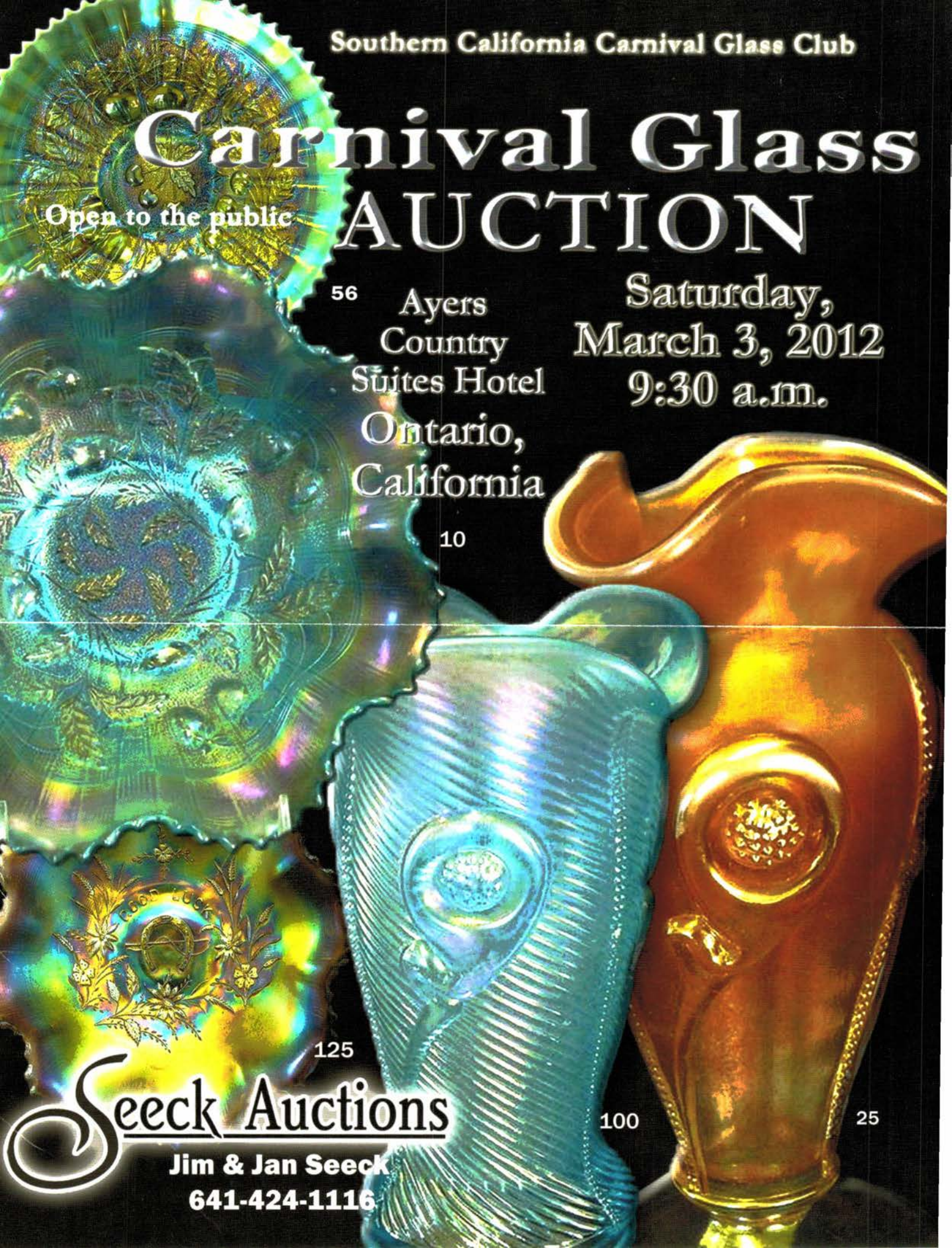
10

125

100

25

Seeck Auctions
Jim & Jan Seeck
641-424-1116



SATURDAY, MARCH 3, 2012 —9:30 A.M.
Ayres Country Suites Hotel
1945 E. Holt Blvd. Ontario, California 91764

NO BUYER'S PREMIUM
OPEN TO THE PUBLIC

For Online Auction Catalog, Check our Website: www.seeckauction.com
Online absentee bidding closes, Friday, March 2 at 6 p.m. CST

If staying at the Hotel, call direct for room reservations: 909-390-7778. Cutoff date for reservations is Feb 16, 2012.

San Diego / Southern Calif. Convention info: Contact President Judy Maxwell at 909-794-4843 or judymax3@aol.com

Club Website: www.sccgc.webs.com

Terms: Cash or Check, VISA, MasterCard & Discover accepted w/proper ID. **4% Clerking Fee** on all purchases except for payment of cash or check. Announcements made day of sale take precedence over any printed information.

**** Sales Tax will be charged, please bring your tax-exempt numbers.**

Also, please email us and we will put you on our email mailing list for auction notices.

We have 3 options for absentee bidding:

1) If you DO NOT have internet access or access to our website, you can:

Call us by phone to enter your bids at (641)424-1116 **OR** By sending the numbers of the item(s) desired and the amount bid on each to: Seeck Auctions, PO Box 377, Mason City, Iowa 50402. (The mail has not been very dependable. We would prefer you call us with your bids rather than send them in a letter.)

- All written and called in bids will be entered into the online catalog by us.
- Have all bids in by **Wed., February 29th**.

2) Enter your bids from our website into our online catalog through the Auction Flex system.

- When you get to the online catalog, you will need to login as a bidder. For the first time you will need to **set up your account** by creating a username and password. This will include filling out a form with your name, address, etc. You will also need to **register for the auction** which will ask you to enter a valid credit card number. This card will be validated by a \$1 charge to your card. This will only happen once and you will now be able to enter bids through our online catalog by just logging in with your user name and password.
- You will use this user name and password for all our auctions. You are not required to pay by credit card if you are successful. This is just a safeguard for us if someone does not pay. We will let you know what you owe us through an email and you can decide how you would like to pay us.
- An exciting advantage of entering your bids online yourself, is the option to be notified by email if you are outbid on an item. You will know when you are outbid on an item and you can increase your bid on that item or bid on something else. **There will be a cutoff date and time for entering your bids online.** After this time has passed, you will not be able to enter your bids from our online catalog.
- Remember, that just because you are the high bidder in the online catalog, this does not mean you have won the item. Your bid will still need to beat the floor bidders and live phone bidders. This system will run our absentee bids just as we did before. You will still be able to buy the item lower than your online bid unless someone on the floor bids you higher.

3) Live phone bidding is available on pieces with an estimated sale price of \$500 or more. If you would like to participate in live phone bidding, contact us by **the Tuesday before the auction (Feb. 28th)**. We will need to know the lot# and the phone number that you can be reached at on the day of the auction. We will also need your home phone number if different than the above number. Please call with questions: 641-424-1116.

There is a \$7 handling charge for each successful bid. Shipping and insurance charges are additional. Bidders will be notified by phone/email if their bid(s) are successful. This will be done 1 - 3 days after the auction.

If you do not receive an item that sold for less than your bid, assume we cancelled your bid because the item had a severe manufacture problem, damage or was not listed correctly.


BID INCREMENTS: \$1 - \$100/\$5 \$100 - \$200/\$10 \$200 - \$700/\$25 \$700 - \$1,500/\$50
\$1,500 - \$3,000/\$100 \$3,000+ Auctioneer's Discretion

- ___ 1. Peacock & Dahlia 7" ruffled bowl - marigold
- ___ 2. Blackberry Spray JIP CRE hat – green - silvery
- ___ 3. Diamond Point Columns 12" vase - green
- ___ 4. Sunflower & Diamond vase - marigold
- ___ 5. Heavy Diamond ftd vase - marigold
- ___ 6. Grape Delight rose bowl - marigold - pretty
- ___ 7. Fashion water pitcher - marigold
- ___ 8. Fashion tumblers (2) - marigold - sold as pair
- ___ 9. 1908 St. Paul Shriner's champagne - ruby flash
- ___ 10. **Stippled Strawberry ruffled bowl w/BW back ice blue - extremely rare, one of less than a handful known, may be the only one w/BW back, fantastic irid., WOW!**
- ___ 11. Butterfly & Berry 10" vase - green - scarce color
- ___ 12. Butterfly & Berry 8" vase - blue
- ___ 13. **Good Luck ruffled bowl w/ribbed back- aqua opal -pastel & nice, not many opportunities**
- ___ 14. **Good Luck ruffled bowl w/ribbed back - ice blue super rare w/super irid., nick on top cleat of horseshoe**
- ___ 15. **Good Luck ruffled bowl w/ribbed back - emerald green - fabulous bowl, fantastic irid. plus rare**
- ___ 16. Good Luck ruffled bowl w/ribbed back - amethyst - has fantastic lavender irid., beautiful
- ___ 17. Good Luck ruffled bowl w/ribbed back – blue - super nice
- ___ 18. Good Luck ruffled bowl w/ribbed back – marigold - pretty
- ___ 19. Dugan's Cosmos chop plate or low bowl - amethyst - extremely rare piece
- ___ 20. **Poppy Show 9" plate - marigold - dark & super, this is what you would call pumpkin**
- ___ 21. **Poppy Show 9" plate – marigold - fantastic pink & yellow irid., minor nick on collar base**
- ___ 22. Puzzle round bonbon - amethyst
- ___ 23. **Waterlily ftd ruffled saucer - lime green opal - super nice & scarce**
- ___ 24. Waterlily ftd ruffled saucer – green - scarce color
- ___ 25. **Tornado vase w/pedestal foot - marigold- extremely rare American made version of the Tornado vase, very few known, minor bubble burst on inside of vase, should not affect the value, neat piece!**
- ___ 26. **Tornado lg size vase - marigold - super nice, scarce**
- ___ 27. **Tornado small size vase - marigold - super pretty, scarce**
- ___ 28. **Tornado small size vase – purple - pretty, scarce**
- ___ 29. Windmill deep round bowl – marigold - nice
- ___ 30. **Poinsettia & Lattice ftd ruffled bowl w/ribbed back ice blue - very dark w/ pretty irid.**
- ___ 31. **Poinsettia & Lattice ftd ruffled bowl w/ribbed back marigold - super pretty, scarce**
- ___ 32. **N's Thin Rib 12" vase - vaseline - pastel & super**
- ___ 33. N's Thin Rib 10" vase - green - nice
- ___ 34. N's Thin Rib 12" vase - olive green - pretty
- ___ 35. **Butterfly & Berry centerpiece bowl- amethyst- extremely rare & super, not many around**
- ___ 36. **Wishbone ftd ruffled bowl - emerald green - fantastic!**
- ___ 37. Wishbone ftd ruffled bowl - purple
- ___ 38. Wishbone ftd ruffled bowl - marigold - pretty
- ___ 39. Freefold 9 1/2" vase - purple - very pretty
- ___ 40. **Butterfly & Berry hatpin holder - blue - super rare & nice, a goodie!**
- ___ 41. Tree Trunk 6 1/2" squatty vase - purple
- ___ 42. Tree Trunk 6 1/2" squatty vase – marigold
- ___ 43. Imperial Grape ruffled bowl - purple - electric blue irid., beautiful
- ___ 44. Imperial Grape ruffled bowl - marigold - nice
- ___ 45. **Peacocks ruffled bowl w/ribbed back - aqua opal - super pretty example w/lots of opal**
- ___ 46. Peacocks ruffled bowl w/ribbed back - marigold - dark & nice
- ___ 47. Peacocks ruffled bowl w/ribbed back – marigold- pink & yellow irid.
- ___ 48. Honeycomb & Beads crimped edge 7" plate - purple
- ___ 49. Plaid IC shaped bowl – marigold - pretty
- ___ 50. **Poppy Show vase - smoke - extremely rare & nice**
- ___ 51. Garden Path Variant deep ruffled bowl - marigold
- ___ 52. **Stag & Holly lg size IC shaped ftd bowl- aqua- rare, pretty**
- ___ 53. Stag & Holly lg size IC shaped ftd bowl - blue - electric, pretty
- ___ 54. Stag & Holly lg size IC shaped ftd bowl - marigold - dark, pretty
- ___ 55. Stag & Holly lg size IC shaped ftd bowl - pastel marigold - lots of pink & yellow irid.
- ___ 56. **Stippled Three Fruits 9" plate w/ribbed back - aqua opal - one of the best we've sold, fabulous piece!**
- ___ 57. **Stippled Three Fruits 9" plate w/ribbed back - blue- super irid.**
- ___ 58. Stippled Three Fruits 9" plate w/ribbed back - amethyst nice, some may call it lavender
- ___ 59. Stippled Three Fruits 9" plate w/ribbed back - marigold straight out of the pumpkin patch!
- ___ 60. **Hearts & Flowers ruffled compote- aqua opal - super pretty**
- ___ 61. **Hearts & Flowers ruffled compote- aqua opal - perfect match to the previous one, great**
- ___ 62. **Hearts & Flowers ruffled compote- lime green- rare color**

- ___ 63. Hearts & Flowers ruffled compote - blue - super pretty
- ___ 64. Peacock Tail 3 in 1 edge 10" bowl - amethyst - nice
- ___ **65. Zippered Loop 5" finger lamp - smoke - has 4 1/8" base, super rare, nice**
- ___ 66. Beaded Bullseye 7 1/2" vase - purple - super, has 6 1/2" mouth
- ___ **67. Ten Mums CRE bowl - emerald green - I usually don't call Fenton emerald but this is so great, I have to**
- ___ 68. Ten Mums CRE bowl - blue - nice
- ___ 69. N's Ftd Fine Rib JIP vase - amethyst - nice
- ___ **70. Captive Rose 9" plate - marigold - dark, pretty**
- ___ 71. Captive Rose 9" plate - green - silvery
- ___ **72. Floral Sunburst or Daisy Spray 8" vase - purple - fantastic irid., rare in purple**
- ___ **73. Lined Lattice 5" squatty vase - purple - flared out, electric**
- ___ 74. Lined Lattice 5" squatty vase - marigold - flared out, pretty
- ___ **75. Greek Key tankard water pitcher - green - fantastic pitcher, rare, been a bit since we've sold one of these**
- ___ 76. Little Flowers 10" ruffled bowl - green
- ___ **77. Rose Show ruffled bowl - aqua opal - scarce, nice, collector's favorite**
- ___ **78. Rose Show ruffled bowl - ice blue - scarce w/ super irid.**
- ___ **79. Rose Show ruffled bowl - marigold - dark, dark, dark**
- ___ 80. Peacock Tail square shaped bowl - amethyst
- ___ **81. Fantail IC shaped ftd bowl - blue - electric, super**
- ___ 82. Acanthus deep round bowl - smoke - super pretty
- ___ **83. Peacocks PCE bowl w/ribbed back - green - rare color, nice**
- ___ **84. Peacocks PCE bowl w/ribbed back - blue - electric highlights**
- ___ 85. Peacocks PCE bowl w/ribbed back - marigold - soft, pretty irid.
- ___ **86. Basketweave Open Edge square shaped basket - ice blue - scarce, nice**
- ___ 87. Basketweave Open Edge square shaped basket - ice green - scarce, nice
- ___ 88. Basketweave Open Edge square shaped basket - white - scarce
- ___ 89. Basketweave Open Edge square shaped basket - red
- ___ 90. Basketweave Open Edge square shaped basket - green - scarce color, nice
- ___ 91. Basketweave Open Edge square shaped basket - aqua - nice
- ___ 92. Basketweave Open Edge square shaped basket - powder blue
- ___ 93. Basketweave Open Edge square shaped basket - powder blue
- ___ 94. Basketweave Open Edge square shaped basket - bluish/lavender slag
- ___ 95. Basketweave Open Edge square shaped basket - blue
- ___ 96. Basketweave Open Edge square shaped basket - marigold
- ___ **97. Grape & Cable 7" ruffled bowl w/BW back - ice blue - extremely rare bowl & pretty**
- ___ 98. Ripple 12 1/2" vase - purple - 3 3/8" base
- ___ 99. Ripple 12" vase - green - 3 3/8" base
- ___ **100. Ribbed Tornado vase - ice blue - extremely rare, only a few known, fantastic piece**
- ___ 101. Question Mark ftd plate - white - scarce, nice
- ___ 102. Question Mark ftd plate - marigold - square, pretty
- ___ **103. Oriental Poppy tankard water pitcher - white - super pretty irid., rare**
- ___ **104. Oriental Poppy tankard water pitcher - purple - very pretty**
- ___ 105. Holly 9" plate - white - a beauty
- ___ 106. Holly 9" plate - marigold
- ___ 107. Four Flowers 10" ruffled bowl - purple - super pretty, large chunk out of base
- ___ **108. Ribbon Tie 3 in 1 edge bowl - powder blue - fantastic irid., has a great look to it**
- ___ 109. Ribbon Tie 3 in 1 edge bowl - amethyst
- ___ **110. Loganberry vase - purple - fantastic & quite rare**
- ___ **111. Loganberry vase - amber - as nice as we've sold**
- ___ 112. Pansy ruffled bowl - purple - pretty
- ___ 113. Stippled Good Luck bowl w/ribbed back - blue - scarce
- ___ 114. Enameled Cherries & Little Flowers 7 pc. water set - blue - nice
- ___ **115. Sunflower spt ftd ruffled bowl - ice blue - super pretty, rare**
- ___ **116. Sunflower spt ftd ruffled bowl - green - fantastic! some may call this one emerald**
- ___ 117. Sunflower spt ftd ruffled bowl - purple - another fantastic one!
- ___ 118. Sunflower spt ftd ruffled bowl - marigold - another out of the pumpkin patch
- ___ 119. Ripple 11" vase - aqua - 2 7/8" base, scarce, nice
- ___ **120. Carnival Glass Dragon & Lotus IC shaped bowl - red - cherry red color & super**
- ___ 121. Dragon & Lotus IC shaped bowl - marigold
- ___ **122. Kulor 10" vase - marigold - extremely rare in this size, only a few known in this size, nice**
- ___ 123. Nautilus 10" vase - purple - hard vase to find
- ___ 124. Poinsettia milk pitcher - marigold
- ___ **125. Good Luck "prototype" ruffled bowl w/ BW back - marigold - extremely rare bowl, one of five prototypes anyone has seen**

- ___ 126. Strawberry 9" plate w/BW back - green
 ___ 127. Strawberry 9" plate w/BW back - marigold - nice
 ___ **128. Grape & Cable banana boat - purple - fantastic irid., flared out more than most**
 ___ 129. Rustic 14 1/2" mid-size vase - marigold
 ___ **130. Orange Tree w/trunk 9" plate - blue - scarce**
 ___ 131. Orange Tree 9" plate - marigold - super pretty
 ___ 132. Many Fruits round 5 pc. punch set - marigold
 ___ 133. Chrysanthemum lg size IC shaped fld bowl- blue- super pretty, minor pinpoint on small collar base
 ___ **134. Brooklyn Bridge 10 ruffled bowl- marigold - nice**
 ___ 135. Basketweave Open Edge small size ruffled basket - ice green - scarce
 ___ **136. Poppy Spray 9 1/2" floral vase - amethyst - European, maker unknown, hard to find.**
 ___ 137. Fruits & Flowers bonbon - blue - nice
 ___ 138. Fruits & Flowers bonbon - marigold - nice
 ___ 139. Diamond Rib 6 1/2" squatty vase - marigold - has pulled points, unique
 ___ **140. Grape & Cable orange bowl or lg fruit bowl - green - extremely rare & nice, not many around**
 ___ 141. Smooth Panels 4 1/2" vase - marigold
 ___ 142. Dugan Cherries 10" ruffled bowl - purple - nice
 ___ 143. Floral & Grape 4 pc. water set - blue - silver & gold irid., one tumbler has chip
 ___ 144. Diamond Points 10" vase - green
 ___ **145. Three Row Open Edge square shaped basket - celeste blue - rare shape, rare color, nice**
 ___ **146. Three Row Open Edge square shaped basket - ice green - scarce**
 ___ **147. Three Row Open Edge square shaped basket - white - very nice**
 ___ **148. Palm Beach whimsy 8" vase - purple - has very heavy stretchy irid., pretty & neat vase, internal crack in side of vase**
 ___ 149. Ripple 8" vase - purple - has 3 3/8" base
 ___ **150. Singing Birds water pitcher - emerald green - a fantastic pitcher! from the Seale collection**
 ___ 151. Singing Birds water pitcher - purple - scarce, nice
 ___ 152. Singing Birds water pitcher - marigold - nice
 ___ 153. Fenton Peacock at Urn ruffled bowl - marigold
 ___ 154. N's Peacock at Urn IC sauce - purple - very pretty example
 ___ **155. Good Luck ruffled bowl w/BW back - horehound very rare color, nice**
 ___ **156. Good Luck ruffled bowl w/BW back - green - electric, super, won't quite call it emerald, but it is nice**
 ___ 157. Good Luck ruffled bowl w/BW back - marigold - mold roughness on base
 ___ 158. Imperial Grape lg ruffled bowl - purple - very pretty
 ___ 159. Diamond Points 7" squatty vase - green
 ___ **160. Rose Show Variant ruffled bowl w/ribbed back - marigold - super pretty w/soft pink irid., very scarce**
 ___ 161. Bells & Beads tri-cornered CRE bowl- purple- pretty
 ___ **162. Peacocks 9" plate w/ribbed back - blue - very pretty w/electric highlights**
 ___ **163. Peacocks 9" plate w/ribbed back - marigold - pretty w/lots of pink & yellow**
 ___ 164. Holly ruffled compote - blue
 ___ **165. Stork & Rushes punch bowl & base - amethyst- very rare, nice for these**
 ___ 166. Orange Tree powder jar - blue
 ___ 167. Grape & Cable 11" ruffled bowl w/BW back - purple - a beauty
 ___ 168. Basketweave Open Edge lg size IC shaped bowl- white - scarce, nice
 ___ 169. Four Seventy Four 5 pc. water set - marigold
 ___ 170. Fenton Peacock at Urn 9" plate - white - scarce
 ___ 171. Fenton' Peacock at Urn 9" plate - marigold - nice
 ___ 172. Leaf & Beads nut bowl - white - scarce, very pretty
 ___ 173. Smooth Panels 9" vase - marigold on milk glass
 ___ 174. Ribbon Tie ruffled bowl - green
 ___ **175. Daisy & Drape turned in vase - ice blue - very pretty, hard to find**
 ___ 176. Wild Rose open edge fld bowl - green
 ___ 177. Royalty 8 pc. punch set - marigold - extremely rare set, not often sold, has the Fashion base but this is correct for this set
 ___ 178. Good Luck PCE bowl w/ribbed back - blue - pretty w/electric highlights
 ___ 179. Good Luck PCE bowl w/ribbed back- purple - nice
 ___ 180. Good Luck PCE bowl w/ribbed back - marigold- pretty
 ___ **181. Pinwheel or Derby 12" vase - marigold - Sowerby, never seen this size vase before, very pretty**
 ___ 182. Lotus & Grape bonbon - green
 ___ **183. Peacock & Grape ruffled bowl - marigold - fantastic piece, has radium irid., very unusual**
 ___ 184. Blackberry Spray 2 sides up basket - amethyst - pretty
 ___ **185. Stippled Strawberry PCE bowl w/ribbed back purple - electric, pretty**
 ___ **186. Stippled Strawberry PCE bowl w/ribbed back marigold - pretty**
 ___ 187. April Showers 11" vase - marigold
 ___ 188. Dragon & Lotus ruffled bowl - peach opal - scarce, nice
 ___ 189. Waterlily IC shaped master berry bowl - marigold - pretty
 ___ 190. Nippon ruffled bowl w/BW back - green - nice
 ___ 191. Nippon ruffled bowl w/BW back - purple- also nice
 ___ 192. Nippon ruffled bowl w/BW back - marigold- dark, nice
 ___ 193. M'burg Holly Sprig spade shaped hdd nappy - amethyst - radium, nice
 ___ 194. Four Pillars 10" vase- aqua opal- typical foot nicks

- ___ 195. Wreath of Roses 8 pc. punch set w/Vintage interior - amethyst - scarce, nice
- ___ 196. M'burg Nesting Swan ruffled bowl - amethyst - radium
- ___ **197. Grape & Cable creamer - emerald green - unbelievable electric irid.**
- ___ **198. Grape & Cable spooner - emerald green - a match to the creamer**
- ___ 199. Long Thumbprint 10 1/2" vase - green
- ___ **200. Stippled Grape & Cable Variant 9" plate w/ ribbed back - sapphire - extremely rare plate, beautiful**
- ___ 201. Amaryllis tri-cornered dome ftd compote - pastel marigold - pretty
- ___ 202. Wine & Roses 5 pc. water cider set - marigold - nice, tiny pinpoint on base of pitcher
- ___ 203. Wild Strawberry ruffled sauce - marigold
- ___ 204. Chrysanthemum ruffled bowl - marigold
- ___ **205. Stippled Three Fruits Medallion spt ftd ruffled bowl - aqua opal - pastel, super**
- ___ **206. Stippled Three Fruits Medallion spt ftd ruffled bowl - emerald green - very rare, nice**
- ___ 207. Stippled Three Fruits Medallion spt ftd ruffled bowl - marigold - pumpkin & super
- ___ **208. Wisteria tumbler - ice blue - rare tumbler, nice**
- ___ 209. Two Flowers lg size ftd IC shaped bowl - blue - extremely flat, borderline chop plate
- ___ **210. Fenton Grape & Cable ftd deep round bowl - celeste blue- super stretchy irid., rare bowl, nice**
- ___ 211. Fenton Panels 11 1/2" vase - ice green - nice
- ___ **212. Stippled Grape & Cable Variant PCE bowl w/ ribbed back - blue - scarce, nice**
- ___ 213. Ten Mums ruffled bowl - green
- ___ 214. Holly IC shaped bowl - blue - nice
- ___ **215. Fenton Grape & Cable centerpiece bowl w/ plain interior - amethyst - absolutely super, only one I can remember - I'm getting older though! fantastic piece!**
- ___ 216. Leaf & Beads rose bowl - aqua opal - nice
- ___ 217. Beaded Bullseye 9" vase - purple - pretty
- ___ 218. Greek Key ruffled bowl w/BW back - marigold - super pretty
- ___ 219. Tree Trunk 11" vase - green
- ___ **220. Greek Key & Sunburst 2-hddl loving cup - marigold - European, maker unknown, rare.**
- ___ 221. Grape & Cable 5 pc. punch set - purple - chip on collar base of bowl
- ___ 222. Big Basketweave 2 hddl basket - white - scarce color, pretty
- ___ 223. Round Up low ruffled bowl - purple - super pretty
- ___ 224. Luster Rose fernery - purple - nice
- ___ **225. Holly ruffled bowl - marigold on moonstone - fantastic! a super piece!**
- ___ 226. Fine Cut & Roses rose bowl - ice blue
- ___ 227. Three Fruits Medallion spt ftd ruffled bowl - purple - super
- ___ 228. Three Fruits Medallion spt ftd ruffled bowl - marigold - nice
- ___ 229. Rose Spray JIP compote - ice blue
- ___ **230. Dozen Roses ftd round bowl - purple - rare bowl, nice**
- ___ 231. Six Petal tri-cornered bowl - purple
- ___ 232. Persian Garden 6" plate - marigold
- ___ 233. Stippled Good Luck ruffled bowl w/ribbed back-blue
- ___ 234. M'burg Whirling Leaves ruffled bowl- marigold-satin, light irid. in center of bowl
- ___ **235. Poppy Show ruffled bowl - blue - rare color, hard find**
- ___ 236. Three Fruits ruffled bowl w/BW back - green - chip on point
- ___ **237. N's Bushel Basket - green - electric, fabulous, this has got to be the prettiest green basket I've ever seen!**
- ___ 238. Ski Star dome ftd deep ruffled bowl- purple- nice
- ___ 239. Petal & Fan ruffled sauce - purple - nice
- ___ **240. Stippled Three Fruits ruffled bowl w/ribbed back - blue - electric, nice**
- ___ 241. Stippled Three Fruits ruffled bowl w/ribbed back marigold - dark, super
- ___ 242. Mikado round compote - marigold - pretty
- ___ 243. M'burg Peacocks master berry bowl - amethyst - radium, scarce
- ___ 244. M'burg Peacocks berry sauce - amethyst - radium, nice
- ___ 245. M'burg Peacocks berry sauce - amethyst - radium
- ___ **246. Tree Trunk 13" mid-size vase- green- scarce, nice**
- ___ **247. Tree Trunk 13" mid-size vase - purple - purple**
- ___ **248. Tree Trunk 12 1/2" mid-size vase - marigold - dark, nice**
- ___ 249. Scroll Embossed ruffled bowl - purple - nice
- ___ **250. Hearts & Flowers 9" plate w/ribbed back - marigold - very pretty, minor pinpoint on one point**
- ___ **251. Hearts & Flowers PCE bowl w/ribbed back - marigold - dark, pretty, rare**
- ___ **252. Hearts & Flowers ruffled bowl w/ribbed back marigold - scarce, pretty**
- ___ 253. Hearts & Flowers ruffled bowl w/ribbed back - ice blue - nice
- ___ 254. Dugan Cherries IC shaped bowl - purple - nice
- ___ **255. 1910 Detroit Elks IC shaped bowl - green - very scarce, very pretty for these**
- ___ 256. Ring Optic or #1531 15 1/2" vase - ice blue - nice, stretch glass

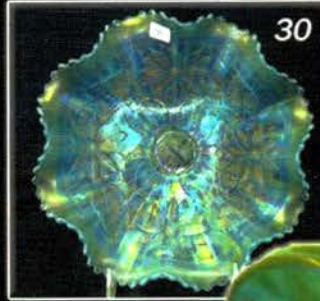
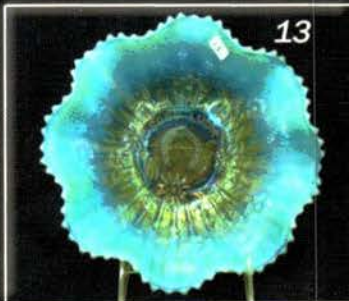
- ___ 257. Curved Star 9" vase - blue - pretty
 ___ 258. Embroidered Mums ruffled bowl w/ribbed back-
 blue - nice
 ___ 259. Three Fruits ruffled bowl w/plain back - purple
 ___ **260. Stippled Peacocks PCE bowl w/ribbed back -
 blue - electric, pretty**
 ___ 261. Apple Tree water pitcher - marigold
 ___ 262. Apple Tree tumbler - marigold
 ___ 263. Grape & Cable 9" plate w/BW back - green
 ___ 264. Poppy pickle dish - blue - nice
 ___ **265. Tornado 6" ftd vase w/green tornados -
 marigold - very rare & desirable,
 European vase**
 ___ 266. Lined Lattice 10" vase - purple
 ___ **267. Double Stemmed Rose dome ftd ruffled bowl-
 celeste blue - super stretchy irid., very minor
 spot on edge, could be from irid.**
 ___ 268. Cherry Circles round bonbon- blue - very pretty
 ___ 269. Heart & Vine 3 in 1 edge bowl - amethyst
 ___ 270. Basketweave Open Edge 2 sides up basket -
 reverse amberina - 2 minor pinpoints on back edge
 ___ 271. Drapery 8" vase - green - rare color, minor nick
 on feet
 ___ **272. Stippled Grape & Cable Variant ruffled
 bowl w/ribbed back - emerald green -
 fantastic bowl, beautiful!**
 ___ 273. N's Fine Rib 10" vase - green
 ___ 274. Beaded Cable rose bowl - green - has rayed
 interior
 ___ **275. M'burg Many Stars 3 in 1 edge bowl -
 amethyst - radium, pretty**
 ___ 276. Corinth 9" JIP vase - amethyst
 ___ 277. Corinth 9" JIP vase - marigold
 ___ 278. Captive Rose 6 ruffled bowl - amethyst -
 spectacular
 ___ 279. Frosted Block 9" plate - clambroth
 ___ **280. Two Flowers 9" spt ftd plate - marigold - very
 scarce, nice**
 ___ 281. Grape & Cable bonbon - marigold
 ___ 282. Stippled Good Luck PCE bowl w/ribbed back-
 marigold - pastel & pretty
 ___ **283. Grape & Gothic Arches water pitcher - blue -
 scarce, pretty**
 ___ 284. Grape & Gothic Arches tumbler - blue - nice
 ___ **285. Stippled Three Fruits PCE bowl w/ribbed
 back - marigold - dark, super beautiful**
 ___ 286. Fenton's Grape & Cable ruffled fruit bowl with
 Persian Medallion interior - amethyst - nice
 ___ 287. Persian Garden IC sauce - white - pretty
 ___ **288. Rose Show 9" plate - marigold - dark, pretty**
 ___ 289. Bouquet water pitcher - marigold - nice
 ___ 290. Drapery candy dish- ice blu - normal nick on toe
 ___ **291. Rustic 19" funeral vase - blue - scarce,
 a very nice one!**
 ___ 292. Wild Strawberry handgrip 7" plate -
 marigold - nice
 ___ 293. Four Seventy Four milk pitcher - green
 ___ **294. Stippled Peacocks 9" plate w/ribbed back-
 reninger blue - super pretty example for these,
 rare color**
 ___ 295. Grape & Cable 6" plate - purple
 ___ 296. Beaded Bullseye 11" vase - emerald green - very
 rare vase, nice
 ___ 297. Peacock at the Fountain tumbler - blue
 ___ 298. Persian Garden 11" ruffled bowl - white - nice
 ___ 299. Scales ruffled bowl - blue opal
 ___ **300. Stippled Good Luck 9" plate w/ribbed back -
 pastel marigold - covered w/yellow irid.,
 beautiful**
 ___ 301. Hobstar & Feather punch cup - marigold &
 Acorn Burrs punch cup - green - sold as pair
 ___ 302. Grape & Cable lg ruffled bowl - red -
 contemporary
 ___ 303. Imperial Grape wine bottle - purple - has green
 stopper
 ___ 304. Open Edge pieces (3) - all have damage
 ___ 305. Purple tumblers (3) & blue tumbler - sold as lot
 ___ 306. Marigold tumblers (7) - sold as lot
 ___ 307. Lot of Pastel Swans (7) - all to go
 ___ 308. Lot of butter dish lids (4)
 ___ 309. M'burg Rosalind 3 in 1 edge 10" bowl -
 amethyst; Peacock  ruffled compotes -
 amethyst & green - all have damage on bases -
 sold as lot
 ___ 310. Lot of Carnival Glass vases (3) - all have
 damage
 ___ 311. Lot of Marigold Carnival glass - some may have
 damage
 ___ 312. Lot of Carnival Glass
 ___ 313. Lot of Contemporary Carnival Glass

Seeck Auctions
PO Box 377
Mason City, Iowa
50402

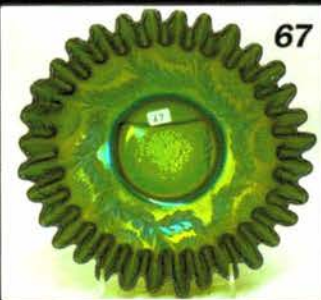
Presorted
First Class Mail
U.S. Postage
Paid
Mail Expeditors

2012 Auction
Carnival Glass
Sat., March 3, 9:30 a.m.
Ontario, California

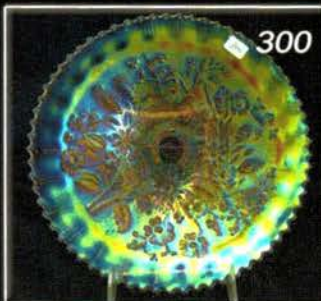
T4 P1 115
LEE MARKLEY
PO BOX 306
MENTONE IN 46539-0306



Open
to the
public



150



175

