

Carnival Glass Auction at the SSCGA Convention

Saturday, January 28th 2012 9:30 am

Doors open at 8:00 AM Saturday, Fridays preview TBA



International Palms Resort

6515 International Drive - Orlando, Florida

Reservations at: 407.351.3500

Well it's time to head south! We have a very nice auction planned this year with glass for every budget and taste! The club once again has done a tremendous job in planning this years convention for you. If you have noticed.. Pre-register early and there is an event dinner for you on Tuesday night this year! At NO CHARGE! Come on down to Orlando and enjoy a great week of

friends and glass. Make sure you pre-register early to ensure you get with the group and the group rates!

All convention information including online registration and activities can be viewed at

www.jimwrodaauction.com

If you cannot make it please give us a call with your bids at

937.548.7835 or 937.459.9562 email: office@jimwrodaauction.com, and now **Auction Flex bidding platform!**

*******Mail, E-Mail, Phone and Absentee Bids Policy:*******

We do accept absentee bids, Phone bids (\$500.00 minimum bid) and left bids. All bids will be bid competitively against the audience. ALL absentee bids must be to us no later than 2 days prior to the auction, otherwise we will not guarantee them being entered into our system. All SUCCESSFUL absentee, phone and left bids are subject to a \$7.00 convenience fee, plus postage and insurance. We will contact you within a couple of days after the auction. Please do not call us to see if you won an item. Laurie/Jaci will call you if your bid was successful. Extra calls coming in just slows us down on contacting people. We are traveling for this auction so it may take until Wednesday of the following week to get hold of you. If damage is found during the auction or preview we will cancel your bid. If manufacture problems bother you such as air bubbles, pulled points, soda ash, tool marks, or any other manufacturing flaw, please be specific in your mail bids or email bids. If there is a manufacture flaw on an item that we feel is truly distracting, we have noted that in the listing already. Auction Company has the right NOT to execute an absentee bid for any reason. ALL bids are due 2 days prior to the auction. ALL items must be paid for within 7 business days after notification. PLEASE NOTE: Laurie will get your items to you as fast as possible but, please allow 2 to 3 weeks for your items to be shipped. Thanks! *Note: ALL Shipping done by AMT packing. We do not do any in house shipping. (Rates stay the same)*

To view more pictures & listing please visit our websites www.jimwrodaauction.com

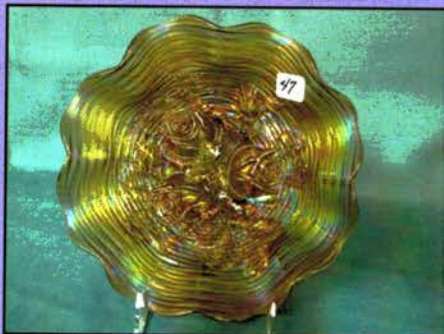
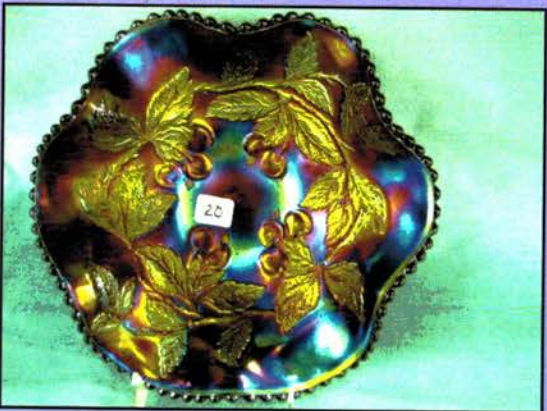
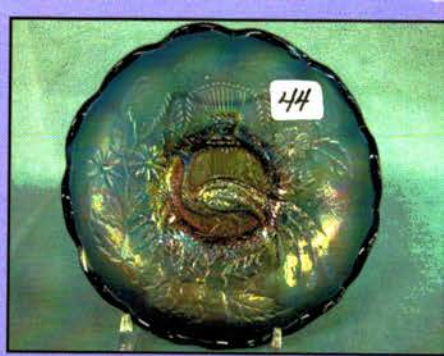
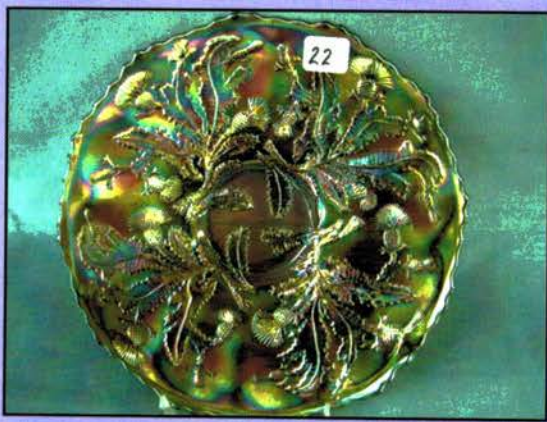
Terms & Conditions: Cash, Travelers checks, business or personal checks w/I.D. Visa/ MC & Discover with a 3% clerking fee. ALL items sell as is, so please take advantage of your preview time. Enjoy Florida!!

Jim Wroda Auction Services

Jim Wroda AU 3132 and Mike Baker AU 3133 - Auctioneers

Rapid Printing — Greenville, Ohio — 937-548-1010





www.jimwrodauction.com



January 28, 2011 SSCGA Carnival Listing

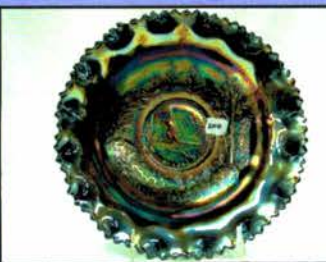
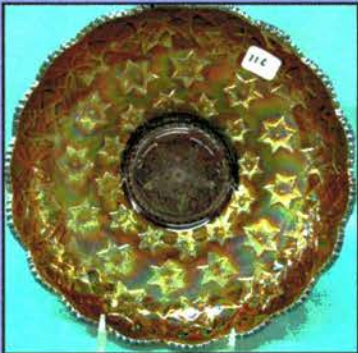
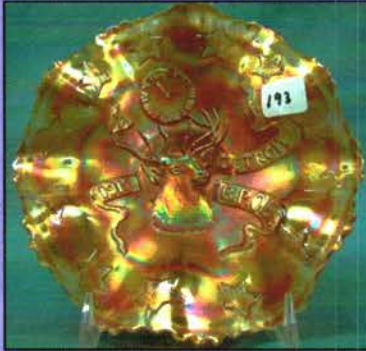
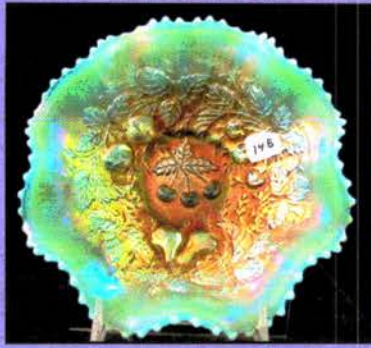
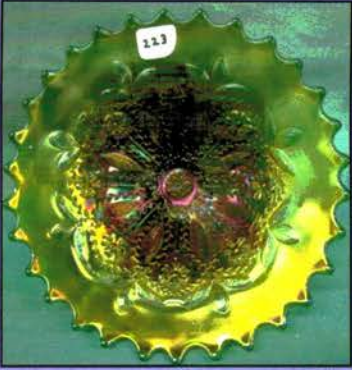
- | | | | |
|-----|--|----|--|
| 1 | Fenton blue Pansy plate | 39 | Mburg mari. Hobnail Swirl rosebowl |
| 2 | West. red Peacock Tail & Daisy plate. LeVay | 40 | Nwood white 9" Hearts & Flowers plate |
| 3 | white Loganberry vase | 41 | Nwood AO Fruits & Flowers 2-handle bon bon. Butterscotch! |
| 4 | Fenton sea mist HP vase | 42 | OUTSTANDING DARK IB PEACOCK AT FOUNTAIN 8 PC. PUNCH SET! SUPER SET. HAS A SAPPHIRE TINGE TO IT!!! HERE'S THE ONE TO BUY!!! |
| 5 | purple Zodiac compote | 43 | Super dark mari. G & C master punch bowl & base. |
| 6 | Nwood 9" IB Nippon PCE bowl | 44 | Very rare 6" Renninger blue Peacock at Urn ICS bowl. Just a few known. Great color! |
| 7 | Nwood white Hearts & Flowers compote | 45 | Nwood 10" mari. G & C large ruffled bowl |
| 8 | Nwood dark mari. Hearts & Flowers compote | 46 | Nwood 9" elec. blue Peacocks plate |
| 9 | Nwood green Fruits & Flowers bon bon. Super color!!! | 47 | RARE Nwood horehound Rose Show bowl with super pastel color!! |
| 10 | (4) blue Oriental Poppy tumblers. CHOICE Nice electric highlights | 48 | Nwood 11" IG Thin Rib vase. A tough one!! |
| 11 | Nwood 8" mari. Good Luck ruffled bowl | 49 | Nwood white corn vase. |
| 12 | Nwood AO Leaf & Beads rosebowl. Tons of opal | 50 | Nwood elec. blue Fruits & Flowers 7" bowl |
| 13 | Nwood 9" mari. Good Luck PCE bowl w/BW back | 51 | Nwood mari. Star of David & Bows ruffled bowl |
| 14 | Nwood 9" green PCE Nippon bowl | 52 | Nwood 9" AO Peacocks ruffled bowl. NICE!! |
| 15 | Nwood horehound round Bushel Basket. Fantastic!! | 53 | Nwood 9" AO Three Fruits stippled footed bowl. NICE! |
| 16 | Nwood 15" blue Tree Trunk midsize vase. Tiny chip on flute. Great color!!! | 54 | RARE Nwood AO Fine Cut & Roses rosebowl Couple nips on toes. Extremely hard to find! |
| 17 | Nwood green Greek Key tankard. RARE! | 55 | Nwood dark mari. Dandelion mug. |
| 18 | Nwood green Greek Key tumbler | 56 | Nwood 9" purple Strawberry plate |
| 19 | Nwood 14" green Tree Trunk midsize vase. | 57 | Nwood blue Good Luck stippled bowl |
| 20 | Dugan 9" elec. purple Cherries ruffled bowl | 58 | Nwood purple Hearts & Flowers plate with electric highlights |
| 21 | Dugan 8" PO Single Flower painted ruffled bowl | 59 | Nwood dark IB G & C fernier. Scarce!!! |
| 22 | Fenton 9" green Thistle plate. Great Color! | 60 | Nwood green Acorn Burr punch set w/4 cups SCARCE!!! |
| 23 | Fenton 9" elec. purple Thistle plate. Outstanding plate!!! | 61 | Nwood 9" green G & C plate w/nice ELEC highlights |
| 24 | Fenton 5" teal Water Lily footed sauce | 62 | Nwood blasting elec. green Singing Birds water pitcher. HOT HOT HOT!!! |
| 24a | Fenton 9" aqua Fine Rib vase. Scarce | 63 | mari. 4" Daisy & Button skate |
| 25 | Fenton 5" vaseline Water Lily footed sauce | 64 | mari. mini hen on nest |
| 26 | Fenton 5" aqua square OE hat. | 65 | Mburg green Strawberry Wreath ruffled compote |
| 27 | Fenton 6" vaseline OE hat | 66 | RARE Mburg mari. Holly Sprig compote |
| 28 | Fenton 5" red OE basket | 67 | Fenton 9" white Peacock at Urn plate |
| 29 | Fenton 8" elec. green Dragon & Lotus footed ICS bowl. | 68 | Dugan elec. purple Jeweled Heart 10" bowl |
| 30 | Fenton blue Orange Tree fruit bowl. Nice color! | 69 | Dugan elec. purple Many Fruits punch set with 2 cups. |
| 31 | Fenton 7" elec. purple Pinecone plate | 70 | (2) West. purple Checkerboard goblets |
| 32 | Fenton purple Wreath of Roses punch bowl & base. | 71 | (4) PO ribbed lamp shades |
| 33 | Fenton blue Orange Tree 8 pc. punch set. | 72 | Imp. 12" elec. purple Freefold vase. Tiny flake on one point |
| 34 | Fenton white Shasta Daisy water pitcher. Scarce! with 1 tumbler | 73 | Fenton 6" purple Utah liquor plate. Scarce |
| 35 | Nwood 14" blue Thin Rib midsize vase. Small chip on base | | |
| 36 | Imp. 14" mari. Morning Glory funeral vase. Nice shape!!! | | |
| 37 | Imp. elec. purple Diamond Lace water set | | |
| 38 | Mburg radium purple Hobnail Swirl rosebowl | | |

- 74 Fenton 6" purple Ogden HG plate. NICE!
- 74a Nwood 9" green Peacocks PCE bowl. Chip on point, But very nice color.
- 74b Fenton 9" RED Dragon & Lotus 8 ruffled bowl. Nice and scarce bowl.
- 75 Nwood green Peacocks plate w/plain back. RARE!
- 76 Nwood 9" mari. Peacocks stippled plate
- 77 Nwood 9" purple Nippon plate
- 78 Nwood 8" pastel AO Peacocks ruffled bowl Great color. Does have a couple burn marks at 10:00 o'clock.
- 79 2-elec. green G & C candlesticks
- 80 Nwood 8" blue Rose Show bowl with nice electric highlights!!!
- 81 Nwood green Greek Key 5 pc. water set
- 82 Nwood elec. lavender G & C large fruit bowl. OUTSTANDING!
- 83 Nwood custard w/nutmeg Grape Freize 10 1/2" fld. ICS bowl.
- 84 set of 6 Nwood pearl Grape & Gothic Arches tumblers
- 85 Nwood 8" custard & gold violet bouquet round bowl. RARE!
- 86 Nwood 10" purple Summer Gardens footed ICS bowl. RARE!
- 87 Nwood light amy. G & C sweet meat. NICE!
- 88 Nwood 9" mari. G & C stippled ruffled bowl
- 89 Nwood 9" mari. Heart & Flower PCE bowl
- 90 Nwood elec. purple Diamond Points vase. Nice color!
- 91 Fenton 6" AO Blackberry Spray hat. RARE!
- 92 Fenton 9" purple Captive Rose plate. Scarce!
- 93 Fenton 9" blue Peacock at Urn 8 ruffle bowl. Nice Color!
- 94 Fenton 10" bright mari. Chrysanthemum ICS bowl.
- 95 Fenton 9" white Three Row ruffled bowl. Scarce.
- 96 Fenton RED Stretch punch bowl on black base. Scarce.
- 97 Fenton mari. Enamelled Lotus 6 pc. water set.
- 98 Nwood 9" IG G & C footed plate. Great Color!
- 99 Imp. 16" mari. Ripple midsize vase. Dark-top to bottom.
- 100 Imp. teal Double Scroll console bowl. Scarce.
- 101 Imp. rad. mari. #3939 Flute ruffled punch bowl & base. Nice color!
- 102 mari. Rising Sun juice pitcher
- 103 mari. Rising Sun water pitcher
- 104 Mburg pastel rad. mari. Wild Flower compote Very Rare!
- 105 OUTSTANDING EXAMPLE! Nwood IB ACORN BURR 8 PC PUNCH SET! BLASTING IRID ON THIS BEAUTIFUL SET!
- 106 Nwood WHITE Peacock at Fountain 8 pc punch set. SWEET SET!
- 107 Nwood elec. purple Peacock at Fountain punch set. BUY IT AND DON'T LOOK BACK!
- 108 Fenton 9" mari. Dragon & Strawberry bowl
- 109 Nwood saph 8" Good Luck ruffled bowl. Scarce!
- 110 Nwood 9" IB G & C stippled PCE bowl. Scarce
- 111 Nwood 8" saph G & C stippled ruffled bowl
- 112 Nwood 8" aqua Hearts & Flowers ruffled bowl
- 113 Fenton amy. opal Holly ruffled hat
- 114 Fenton lavender/smoke Horse Medallion rosebowl
- 115 Nwood saph Leaf & Beads rosebowl
- 116 Mburg purple Many Stars ICS bowl
- 117 Fenton RED Peacock & Grape footed bowl
- 118 Nwood emerald green Peacock on Fence PCE bowl
- 119 Nwood 10" IG Peacock at Urn ICS bowl
- 120 Nwood 10" IB Peacock at Urn ICS bowl
- 121 Nwood 10" mari. Peacock at Urn ruffled bowl
- 122 Nwood elec. blue Peacock at Fountain fruit bowl
- 123 Nwood purple Peacock at Fountain 7 pc. water set
- 124 Imp. 9" purple Cobblestones ruffled bowl
- 125 Nwood aqua opal Dandelion mug
- 126 Imp. purple Zipper Heart 7 pc. berry set
- 127 Nwood purple 6 1/2" Wishbone & Spades plate
- 128 Mburg 9" purple ZigZag square bowl. Buffed chip on base
- 129 Nwood 8" white Wishbone footed bowl
- 130 Dugan IG Windflower Gravy boat
- 131 Fenton RED Vintage Fernery
- 132 Nwood 8" mari. Poinsettia & Lattice bowl
- 133 Nwood 9" IB Poppy Show plate
- 134 Nwood 9" mari. Poppy Show plate
- 135 Fenton 9" blue Ribbon Tie ruffled plate
- 136 Nwood 9" white Rose Show plate
- 137 Nwood 9" mari. Rose Show plate
- 138 Nwood 8" renn. blue Strawberry STIPPLED bowl
- 139 Nwood 8" horehound Three Fruits ruffled bowl
- 140 Dugan 9" white Round Up ruffled bowl
- 141 Dugan 9" white Round Up plate
- 142 Fenton red/amberina 6" Sailboats sauce
- 143 Fenton 7" blue opal Scales ruffled bowl
- 144 Mburg 10" green Seaweed 3/1 edge bowl
- 145 Mburg amy. Strawberry Wreath compote
- 146 Fenton 7 1/2" green Vintage plate
- 147 Fenton 7 1/2" blue Vintage Plate
- 148 Nwood aqua opal Three Fruits STIPPLED ruffled bowl. Scarce
- 149 Nwood IB Three Fruits Medallion ruffled bowl

- 150 Nwood lavender Three Fruits plate-plain back
- 151 Nwood blue Three Fruits stippled plate
- 152 Mburg amy. Trout & Fly ruffled bowl
- 153 Fenton 10" aqua Two Flowers ruffled bowl Ball feet
- 154 Imp. 9" purple Windmill ruffled bowl
- 155 Dugan white 10" Big Basketweave vase
- 156 Dugan blue 8 1/2" Big Basketweave vase
- 157 Nwood mari. Daisy & Drape vase
- 158 Nwood AO Daisy & Drape vase
- 159 Nwood 10" horehound Diamond Points vase
- 160 Nwood 7" white Diamond Points vase
- 161 Nwood 8" saph. Drapery vase
- 162 Fenton 9 1/2" vaseline Fine Rib vase
- 163 Fenton 12 1/2" lime green Fine Rib vase
- 164 Fenton 5 1/2" elec. blue Fine Rib tulip shape vase
- 165 Imp. 11" purple Free Fold vase
- 166 Imp. 11" lavender Free Fold vase
- 167 Nwood 6 1/2" purple Leaf Columns vase
- 168 Nwood 10" green Leaf Columns vase
- 169 Imp. 7" purple Morning Glory vase
- 170 Imp. 6" smoke Morning Glory vase
- 171 Imp. 11 1/2" green Parlor Panels vase
- 172 Imp. 7 1/2" amb. Ripple vase. Has 3" base
- 173 Imp. 9" purple Ripple vase. 3 1/2" base
- 174 Nwood 14" white Thin Rib midsize vase
- 175 Nwood 12 1/2" purple Thin Rib midsize vase
- 176 Nwood 13 1/2" blue Thin Rib midsize vase
- 177 Nwood 10" elec. green Tree Trunk vase
- 178 Nwood 10" elec. blue Tree Trunk vase
- 179 Nwood 9" elec purple Tree Trunk vase
- 180 Nwood mari. Three Fruits stippled plate
- 181 mari. Vintage powder jar w/lid
- 182 Imp. 13" purple Ripple vase
- 183 Inwald 10 1/2" mari. Fleur de Lys vase
- 184 Inwald 6" mari. Fleur de Lys vase
- 185 NWOOD IG G & C TANKARD. GREAT COLOR
VERY RARE. DOES HAVE INTERNAL
FRACTURE ON LIP
- 186 Nwood green G & C 7 pc. tankard set. Rare!
- 187 Nwood mari. G & C 7pc. tankard set
- 188 Nwood purple G & C tankard
- 189 Nwood purple G & C tankard tumbler
- 190 US Glass honey amber Cosmos & Cane 7 pc. water
set. Very hard to find set!
- 191 US Glass honey amber Cosmos & Cane 4 1/2" deep
square bowl
- 192 US Glass honey amber Cosmos & Cane 6 pc. table
set.
- 193 Fenton mari. 1910 Detroit Elks ruffled bowl (one of
three)
- 194 Nwood factory framed picture
- 195 mari. shoe "Souvenir of Fairview, Ohio"
- 196 **Fenton blue Pacific Mail Order G & C footed bowl**
- 197 Dugan white Question Marks bon bon
- 198 Fenton blue 9" Dragon & Lotus bowl
- 199 Australian black amy. Thunderbird 5" sauce
- 200 Australian black amy. Kangaroo 9" bowl. small roo
- 201 Australian black amy. Swan 9" bowl
- 202 Australian black amy. Kingfisher 9 1/2" bowl
- 203 Australian black amy Thunderbird 10" bowl
- 204 Australian black amy. Emu 5" bowl
- 205 Australian black amy. Butterfly & Bell Flower
7 1/2" compote
- 206 Australian black amy. Butterfly & Brush 8 1/2"
ruffled compote
- 207 Australian black amy. Butterfly & Waratah 9"
compote
- 208 Australian black amy. Butterfly Bush large compote
- 209 Australian black amy. Butterfly & Bower small
compote
- 210 Australian black amy. 5" Swan bowl
- 211 Australian black amy. 5" King Fisher bowl
- 212 Australian mari. Emu ICS compote
- 213 Australian mari. Butterfly & Waratah cake plate
- 214 Australian mari. Blocks & Arches creamer
- 215 US Glass white Cosmos & Cane breakfast sugar
- 216 US Glass mari. Pineapple & Fan 9 pc. wine set
- 217 West. mari/MG Carolina Dogwood bowl
- 218 Nwood purple Lovely triangular bowl
- 219 West. BO Daisy Wreath 9" bowl
- 220 Imp. powder blue Wheels 10" bowl. Only one know.
Very Rare
- 221 West. mari. MG Daisy Wreath bowl
- 222 Imp. purple Zippered Heart 7 pc. berry set
- 223 Nwood green Lovely footed bowl
- 224 West. BO 9" Scales Bowl
- 225 West. mari./MG Carolina Dogwood round bowl
- 226 Dugan PO Rays bowl
- 227 Dugan PO Cherries master berry bowl-Jeweled
Heart ext.
- 228 Dugan PO Stippled Flower bowl
- 229 Fenton white 9" Open Edge bowl
- 230 Imp. 8" lavender Open Rose collar base bowl
- 231 Fenton blue vintage fernery
- 232 Nwood green 6" Wild Strawberry sauce
- 233 Dugan purple Pony bowl

- 234 Fenton IG Open Edge 9" 3-row ICS bowl
- 235 Nwood mari. Acorn Burrs 6 pc. berry set
- 236 Fenton mari. Concord bowl
- 237 Imp. mari. 3 in 1 -8" bowl
- 238 West. BO Carolina Dogwood bowl
- 239 Imp. amber Pansy creamer & sugar
- 240 Fenton blue Orange Tree breakfast set
- 241 Nwood green Lustre Flute breakfast set
- 242 Nwood green G & C breakfast set
- 243 Dugan mari. Long Thumbprint breakfast set
- 244 Imp. smoke Fashion open sugar
- 245 Imp. light smoke Fashion creamer
- 246 West. PO Estate breakfast set
- 247 Phoenix mari/MG Wild Loganberry creamer. RARE!
- 248 Phoenix pearl Wild Loganberry sugar w/top RARE!
- 249 Imp. mari. Heavy Diamond sugar & creamer
- 250 Imp. mari. Lustre Rose 6 pc. table set
- 251 Mburg purple Hanging Cherries sugar bowl w/lid Has Crack
- 252 Mburg purple Hanging Cherries creamer
- 253 Mburg purple Hanging Cherries spooner
- 254 Mburg purple Hanging Cherries butter-has flaking on interior rim
- 255 Dugan PO Beaded Panels compote
- 256 Dugan white Constellation compote
- 257 Imp. mari. Chesterfield handled toothpick
- 258 mari. LBJ hat
- 259 Fenton 10" purple Florentine candlesticks
- 260 Nwood 8 1/2" russ/olive Florentine candlesticks
- 261 Fenton 8 1/2" vaseline Florentine candlesticks
- 262 Fenton mari. Holly bowl
- 263 Fenton powder blue Holly 8 ruffled bowl
- 264 Fenton black amy Holly 8-ruffle bowl
- 265 Imp. 8" elec. purple Heavy Grape plate
- 266 Imp. 9" elec. Scroll Embossed plate
- 267 Imp. 9" amber Open Rose plate
- 268 Dugan purple 9" Fanciful plate
- 269 Dugan 6" purple Petal & Fan CRE plate
- 270 Dugan 6" PO Ski Star CRE plate
- 271 Nwood 9" mari. Strawberry plate w/BW ext.
- 272 RARE Imp. green Zipper Heart giant rosebowl
- 273 Mburg purple Hobnail Swirl rosebowl
- 274 Imp. crystal Zipper Heart giant rosebowl
- 275 Imp. crystal Zipper Heart miniature rosebowl
- 276 Imp. crystal Zipper Heart giant ruffled vase
- 277 RARE Fenton BLUE Scale Band 7 pc. water set Only one known!!
- 278 Nwood mari. Raspberry milk pitcher
- 279 Nwood IB Raspberry milk pitcher
- 280 Nwood white Raspberry milk pitcher
- 281 Imp. aqua/teal 474 tumbler
- 282 Phoenix Blackberry mari./MG water pitcher
- 283 Phoenix Blackberry mari./MG goblet
- 284 Dugan PO Vinyard water pitcher. Small bruise on base.
- 285 Imp. lime green Windmill milk pitcher
- 286 Imp. mari. Octagon small 7pc. water set
- 287 (2) mari. Star Medallion goblets
- 288 mari. Imp. Grape wine decanter
- 289 purple Imp. Grape wine bottle-No Stopper
- 290 elec. purple Imp. Grape 9 pc. wine set.
- 291 Nwood mari. G & C pin tray made from punch cup
- 292 Smoke Imp. Grape wine decanter w/damaged stopper
- 293 McKee mari. Colonial Loop 7 pc. wine set.
- 294 McKee mari. Colonial Loop cordial
- 295 (2) smoke Imp. Grape wines
- 296 Imp. helios green Octagon wine decanter-No stopper
- 297 Imp. purple Octagon wine decanter w/3 wines
- 298 Imp. blue Octagon wine - VERY RARE!
- 299 Piccardo mari. Band of Stars 9 pc. wine set
- 300 Imp. mari. 12" Ripple vase
- 301 Jenkins mari. Cut Flowers vase
- 302 Nwood 10" purple Four Pillars vase
- 303 Dugan PO Hyacinth & Many Ribs vase
- 304 Dugan 6" PO Wide Rib pinched top vase
- 305 Dugan PO 13" Target & Spirlex vase
- 306 Imp. 7 1/2" smoke Swirl vase
- 307 Nwood elec. blue 9" Tree Trunk vase
- 308 West. 9 1/2" blue opal Corinth vase
- 309 Dugan 10" purple Big Basketweave vase. Nice Electric color!!
- 310 Dugan 6" mari. Lined Lattice vase
- 311 Imp. 13" amber Ripple funeral vase. Great color. Very hard to find.
- 312 (3) mari. Morning Glory vases
- 313 Riihimaki amber Grand Thistle water pitcher.
- 314 Riihimaki amber Grand Thistle tumbler
- 315 Dugan PO Round Up plate

2012 SSCGA Carnival Glass Convention



Jim Wroda Auction Services
5239 ST RT 49 S
Greenville, Ohio 45331
937.548.7835

PRESORTED
FIRST CLASS MAIL
U.S. POSTAGE
PAID
CELINA, OH
PERMIT NO. 99

FIRST CLASS POSTAGE PAID



6-8*****AUTO**MIXED AADC 434
LEE MARKLEY
PO BOX 306
502 N BROADWAY ST
MENTONE IN 46539-9531



Volume 1, Series 2012

***Can I Go??? Head South to the SSCGA Carnival
Glass Convention, January 25th - 28th, 2012
in Orlando Florida***

