

Lot #25



Lot #142

# BURNS

## AUCTION SERVICE

### 2012 TAMPA BAY CARNIVAL GLASS CONVENTION AUCTION

**SATURDAY, JANUARY 21<sup>st</sup>  
9:30 A.M.**

**Preview:**  
Friday evening, January 20<sup>th</sup> after banquet  
Saturday, January 21<sup>st</sup> at 8:00 a.m.

**DOLPHIN BEACH RESORT  
4900 Gulf Blvd, St. Pete Beach, FL  
800-237-8916 or 727-360-7011**

[www.dolphinbeach.com](http://www.dolphinbeach.com)

For more information, call/write Tom Burns  
183 Sunnyside Drive, Clermont, FL 34711  
**Florida License #AU3768**



Lot #180



Lot #225



Lot #190

Handwritten notes: 3 44 8 / 32 2, 44 / 3.94 576 2

We've been offered the opportunity to conduct the 2012 Tampa Bay "Lose Your Heart to Carnival Glass" Club Convention Auction from Jan. 18-21. This year's glass is from the collection of Lewis Case from Connecticut. The Dolphin Beach Resort is located right on the Gulf of Mexico on good ole St. Pete Beach. The resort has rooms at \$89 Landside, \$109 Poolside and \$139 a day on the Gulf side. There is usually a cut off date so make your reservations ASAP. For further information on the convention, call Carl Chapman at (813) 899-1993 or check out the website at [www.tbccg.com](http://www.tbccg.com).

1. No deposit required. Bidders will take full responsibility to honor any and all bids we execute for them. Payment in full plus postage/handling required after notification and before we ship any item to them.
2. Items are bid on in perfect condition with average or above average iridescence OR as listed in the brochure. **PEOPLE PRESENT AT AUCTION ARE RESPONSIBLE FOR FINDING PINHEADS, WEAR, SPOTTINESS, MANUFACTURERS DEFECTS OR ANY OTHER MINOR FLAWS, ETC.**
3. Successful bidders will be notified by collect call from the auctioneer (so be sure to include your phone number).
4. Phone inquiries about the glass or any other questions are welcome.
5. Phone Bids Due by **Tues., Jan. 17<sup>th</sup>** and can be made by calling Tom Burns (407) 592-6552.
6. If you have some other person at the auction bidding for you, they must pay for the item before taking it.
7. Any terms or conditions given the day of the auction will supersede previously published information.

- |   |  |
|---|--|
| <p>___1. Enclosed Frame of 116 Buttons – Dark (a really extensive and unusual collection)</p> <p>___2. Enclosed Frame of 50 Buttons – Dark (another nice selection of unusual items)</p> <p>___3. 11" Tall N Diamond Point Swung Vase – Ice Blue (rare; nice color and irid.; manuf. flaw in base)</p> <p>___4. Sowerby Covered Swan Butter Dish – Mari. (scarce; great color and detail)</p> <p>___5. <b>5 3/4" TALL X 6 3/4" DIAM. IMPERIAL JEWELS 8 RUFFLED CYLINDER VASE – PURP. (SIGNED WITH IRON CROSS; EXCEPTIONAL IRID.)</b></p> <p>___6. <b>7 3/4" TALL X 7 1/2" DIAM. TALL IMPERIAL STRETCH WIDE PANEL STEMMED COMPOTE – RED (RARE ITEM IN A RARE SIZE; NICE)</b></p> <p>___7. 9" Imperial Stretch Wide Panel Console Bowl – Red (very scarce; nice color)</p> <p>___8. 6" Fenton Stippled Rays I.C. Shaped Sauce – Red (attractive item in a nice shape)</p> <p>___9. N G &amp; C Covered Sweetmeat Compote – Amyth. (nice color and irid.; base a bit lighter)</p> <p>___10. <b>8 3/4" THREE FRUITS MEDALLION FTD. 8 RUFFLED BOWL WITH MEANDER EXT. – AQUA OPAL. (RARE AND DESIRABLE; PASTEL WITH GREAT IRID.)</b></p> <p>___11. 9" N Peacocks Plate with Ribbed Ext. – Ice Green (scarce with nice irid.; sits a bit crooked)</p> <p>___12. <b>9" M'BURG TROUT AND FLY 6 RUFFLED BOWL – MARI. (SATINY FINISH AND HAS NICE COLOR AND DETAIL)</b></p> <p>___13. <b>FENTON DAISY CUT BELL – MARI. (SCARCE NOVELTY; NICE DARK COLOR)</b></p> <p>___14. Fenton Kittens 2 sided Banana Dish – Mari. (scarce shape)</p> <p>___15. <b>FENTON KITTENS 2 SIDED BANANA DISH – BLUE (RARE; VERY DESIRABLE; GREAT IRID. AND DETAIL)</b></p> <p>___16. 7 1/4" Dugan Holly Whirl 6 Ruffled Bowl – Purp. (super color and irid.; really nice)</p> <p>___17. 8 1/4" Dugan Double Stem Rose Domed I.C. Shaped Bowl – Purp. (attractive example; nice)</p> <p>___18. Dugan Question Mark 2 Handled Bon Bon – Purp. (has attractive highlights)</p> <p>___19. Dugan Pastel Swan Master Salt – Mari. (very scarce item)</p> | <p>___20. <b>3 1/2 - 4" DUGAN BEAUTY BUD VASE WITH TIGHT CRIMPED EDGE – PURP. – (RARE &amp; IN A VERY DESIRABLE SHAPE)</b></p> <p>___21. (2) Dugan Many Fruits Handled Punch Cups – Purp. (nice average color and irid.; selling so much each for pair)</p> <p>___22. 8" Dugan Six Petals 6 Ruffled Bowl – Purp. (nice color and irid.)</p> <p>___23. 8" Dugan Six Petals 6 Ruffled Crimped Edge Bowl – Purp. (really nice shape; nice color &amp; irid.)</p> <p>___24. <b>DUGAN AMARYLLIS TRI-CORNERED COMPOTE – AMYTH. (VERY SCARCE &amp; DESIRABLE ITEM; SATINY FINISH)</b></p> <p>___25. <b>10 1/2" DUGAN FARMYARD 6 RUFFLED BOWL WITH JEWEL HEART EXT. – PURP. (RARE AND VERY DESIRABLE; GREAT COLOR, IRID. AND DETAIL; A SUPER EXAMPLE)</b></p> <p>___26. Dugan Mary Ann 2 Handled Vase – Amyth. (nice satiny finish; scarce)</p> <p>___27. Dugan Formal J.I.P. Vase – Mari. (rare and desirable; Marigold to Clear and tough to find)</p> <p>___28. <b>7 1/2" DUGAN FIVE HEARTS DOMED FLARED FLAT BOWL – AMYTH. (VERY SCARCE PATTERN; GREAT DETAIL AND SHAPE)</b></p> <p>___29. 8" Dugan Five Hearts domed 10 Ruffled Bowl – Mari. (very scarce example of this pattern)</p> <p>___30. <b>9 1/2" X 11 1/2" DUGAN FARMYARD SQUARE RUFFLED BOWL WITH JEWEL HEART EXT. – PURP. (ANOTHER RARE AND VERY DESIRABLE ITEM; RARE SHAPE; NICE GOLD / RED HIGHLIGHTS)</b></p> <p>___31. <b>9" DUGAN FANCIFUL FLARED PLATE – PURP. (ABSOLUTELY BEAUTIFUL EXAMPLE)</b></p> <p>___32. <b>6 3/8" DUGAN WISHBONE AND SPADES FLAT PLATE – PURP. (SUPER EXAMPLE)</b></p> <p>___33. 9" Dugan Round Up Flat Plate – Blue (sorta satiny but outstanding)</p> <p>___34. <b>DUGAN PUZZLE 2 HANDLED FTD. BON BON – PURP. (FANTASTIC WITH ELECTRIC HIGHLIGHTS)</b></p> <p>___35. <b>11" DUGAN PERSIAN GARDEN LG. I.C. BOWL – PURP. (DIFFICULT TO FIND AND AN ABSOLUTE BEAUTY! NICE!!!)</b></p> <p>___36. 11 1/4" Dugan Persian Garden Lg. I.C. Bowl – White (scarce; nice average example)</p> |
|---|--|

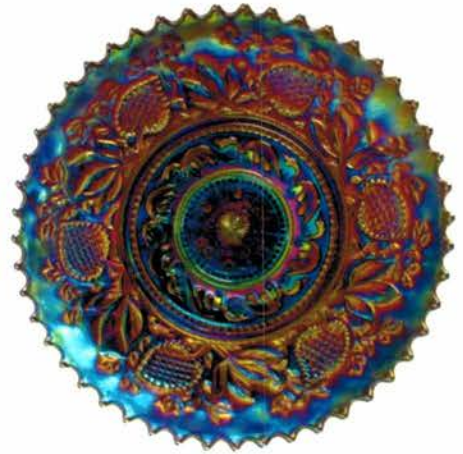
- \_\_\_ 37. **9" DUGAN FLOWERS AND FRAMES DOMED 10 RUFFLED BOWL – PURP. (SUPER BLUE HIGHLIGHTS; VERY DESIRABLE)**
- \_\_\_ 38. 8" Dugan Flowers and Frames deep domed 10 Ruffled Bowl – Purp. (another tough item with great irid. in a scarce shape)
- \_\_\_ 39. 7 ¾" Dugan Flowers and Frames deep domed 10 Ruffled Bowl–P.Opal .(scarce; nice opal.)
- \_\_\_ 40. **10 ¼" DUGAN FOUR FLOWERS LG. 6 RUFFLED BOWL – PURP. (RARE ITEM IN A RARE COLOR; SUPER IRID. AND NICE)**
- \_\_\_ 41. 7 ½" Dugan Border Plants deep domed 10 Ruffled Bowl – Purp. (rare; nice color and irid.)
- \_\_\_ 42. **DUGAN MANY FRUITS ROUND PUNCH BOWL AND BASE – PURP. (RARE, WELL-MATCHED ITEM WITH GREAT COLOR AND DETAIL)**
- \_\_\_ 43. **6 ½" – 7" TALL EUROPEAN CLASSIC ARTS TUMBLER OR VASE – MARI. / GREEN STAIN (VERY RARE ITEM; VERY NICE)**
- \_\_\_ 44. European Classic Arts Rose Bowl – Mari. / Green Stain (very scarce item with nice decoration)
- \_\_\_ 45. **LARGE SIZE AUSTRALIAN BUTTERFLY AND WALWRATH LG. ROUND FLARED COMPOTE – MARI. (LARGE AND IMPRESSIVE ITEM; NICE COLOR, IRID., AND DETAIL – NICE)**
- \_\_\_ 46. Eta Gls. Company Geometric Diamond Lg. Float Bowl–Blue (sorta rare item; haven't seen one)
- \_\_\_ 47. Czech Lg. Interior Swirl Pitcher and (2) Tankard Tumblers – Lt. Mari. (very unusual set; nice size and decoration)
- \_\_\_ 47a. Czech Tankard Pitcher with Amber Handle plus (4) Tankard Tumblers – Clear iridized (unusual)
- \_\_\_ 48. Czech "Rolls" Lg. Cylinder Vase with Black trim – Mari. (scarce; nice size and decoration)
- \_\_\_ 49. Czech "Drape" Tall Bulbous based Vase – Mari. (scarce; nice color)
- \_\_\_ 50. **N G & C 9 PC. RUFFLED BANQUET PUNCH BOWL SET – GREEN (EXTREMELY RARE & VERY DESIRABLE; GREAT COLOR & IRID.)**
- \_\_\_ 51. **N G & C PERFUME BOTTLE AND STOPPER – PURP. (RARE; DESIRABLE; REALLY NICE COLOR AND IRID.)**
- \_\_\_ 52. 8 ½" N G & C Variant Bowl with P.C.E. and Ribbed Ext. – Blue (scarce; nice color and irid.)
- \_\_\_ 53. 8 ½" N G & C Variant Bowl with P.C.E. and Basketweave Ext –Purp. (super color & irid.)
- \_\_\_ 54. 8 ½" N G & C Variant Bowl with P.C.E. and Basketweave Ext. – Dk. Mari. (super color)
- \_\_\_ 55. **9 ¼" N G & C VARIANT FLARED PLATE WITH NARROW BASE & UNIRIDIZED RIBBED EXT. - ELEC. BLUE ( SUPER PRETTY ITEM!)**
- \_\_\_ 56. **N G & C STANDARD SIZE 8 PC. PUNCH SET – PURP. (REALLY NICE EXAMPLE; SCARCE)**
- \_\_\_ 57. N G & C 2 Handled Bon Bon with Basketweave Ext. – Amyth. (satiny finish)
- \_\_\_ 58. N G & C Perfume Bottle and Stopper – Lt. Mari. (rare and very desirable; nice)
- \_\_\_ 59. **N G & C COVERED COMPOTE – DK. MARI. (VERY RARE & DESIRABLE; SUPER IRID.)**
- \_\_\_ 60. **N G & C 8 PC. BANQUET PUNCH BOWL SET – PURP. (RARE WITH GREAT IRID. AND BLUE HIGHLIGHTS – REALLY NICE SET!!!!)**
- \_\_\_ 61. N G & C Mid size Punch Bowl and Base – Purp. (very scarce size; tough to find)
- \_\_\_ 62. **8 ¾" N G & C STIPPLED BOWL WITH P.C.E. AND RIBBED EXT. – ICE BLUE (RARE AND VERY DESIRABLE – TOUGH TO FIND)**
- \_\_\_ 63. **9" N G & C STIPPLED PLATE WITH RIBBED EXT. – PURP. (VERY RARE ITEM; GREAT LUSTRE AND COLOR)**
- \_\_\_ 64. N G & C Covered Butter Dish – Purp. (very scarce; nice color and irid.)
- \_\_\_ 65. **N PEACOCK AT THE FOUNTAIN HANDLED WATER PITCHER – GREEN (VERY RARE AND VERY DESIRABLE; GREAT COLOR)**
- \_\_\_ 66. N Peacock at the Fountain Master Berry Bowl – Green (very rare and tough to find – nice!)
- \_\_\_ 67. N Peacock at the Fountain ind. Berry Bowl – Green (very scarce item – tough to find)
- \_\_\_ 68. **N PEACOCK AT THE FOUNTAIN HANDLED WATER PITCHER – WHITE (RARE AND VERY DESIRABLE – FROSTY AND HIGHLY IRID.)**
- \_\_\_ 69. **N PEACOCK AT THE FOUNTAIN HANDLED WATER PITCHER – PURP. (VERY SCARCE WITH REALLY NICE COLOR AND IRID.)**
- \_\_\_ 70. **N PEACOCK AT THE FOUNTAIN STEMMED RUFFLED COMPOTE WITH RIBBED EXT. – BLUE (RARE AND VERY DESIRABLE – GREAT COLOR AND IRID. AND DETAIL)**
- \_\_\_ 71. **N PEACOCK AT THE FOUNTAIN STEMMED RUFFLED COMPOTE WITH PLAIN EXT. – ICE BLUE (RARE AND VERY DESIRABLE; NICE COLOR AND IRID.)**
- \_\_\_ 72. **N PEACOCK AT THE FOUNTAIN STEMMED RUFFLED COMPOTE WITH PLAIN EXT. – ICE GREEN (RARE AND VERY DESIRABLE; NICE COLOR AND IRID.)**
- \_\_\_ 73. N Peacock at the Fountain Stemmed Ruffled Compote with Plain Ext. – White (very scarce; nice color with nice irid.)
- \_\_\_ 74. 10" N Peacock at the Urn Lg. Ice Cream Bowl – White (very scarce and desirable; nice)
- \_\_\_ 75. **10 7/8" N PEACOCK AT THE URN FLARED CHOP PLATE – PURP. (RARE AND VERY DESIRABLE; REALLY NICE IRID.)**
- \_\_\_ 76. N Peacock at the Urn Lg. Ice Cream Bowl Ice Green (rare and desirable; tough color!)
- \_\_\_ 77. N Singing Bird 7 pc. Water Set – Green (super color and super irid.; nice set)
- \_\_\_ 78. N Singing Bird 7 pc. Water Set – Dk. Mari. (super dark color & nice irid...Wow!)



Lot #30



Lot #240



Lot #31



Lot #160



Lot #80



Lot #231



Lot #50



Lot #185



Lot #65



Lot #40



Lot #241



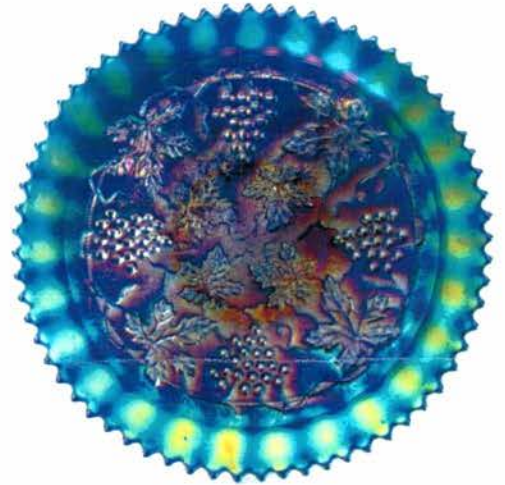
Lot #35



Lot #232



Lot #81



Lot #55



Lot #69



Lot #195



Lot #60

- \_\_\_ 79. **N SINGING BIRD HANDLED MUG – AQUA OPAL. (RARE AND VERY DESIRABLE; A PASTEL EXAMPLE – SOME INTERIOR WEAR)**
- \_\_\_ 80. **N DAISY AND DRAPE TURNED IN FTD. VASE – ICE GREEN (EXTREMELY RARE)**
- \_\_\_ 81. **N DAISY AND DRAPE TURNED IN FTD. VASE – ICE BLUE; (ANOTHER RARE ITEM)**
- \_\_\_ 82. **N Daisy and Drape Turned in ftd. Vase – White (scarce; frosty with nice irid.)**
- \_\_\_ 83. **N Daisy and Drape Turned in ftd. Vase – Mari. (very scarce; dark color and irid.)**
- \_\_\_ 84. **N DAISY AND DRAPE FLARED FTD. VASE – AQUA OPAL. (RARE AND DESIRABLE; SORTA BUTTERSCOTCH)**
- \_\_\_ 85. **N DAISY AND DRAPE FLARED FTD. VASE – BLUE (RARE; DESIRABLE; NICE DARK IRID.)**
- \_\_\_ 86. **WESTMORELAND DAISY SQUARES STEMMED SPITTOON SHAPED COMPOTE – LIME GREEN / MARI. (RARE COLOR FOR THIS RARE SHAPED ITEM; TOUGH TO FIND)**
- \_\_\_ 87. **U.S. GLASS COSMOS AND CANE DOMED FTD. SPITTOON WHIMSEY – DK. MARI. (RARE; DESIRABLE; GREAT COLOR AND IRID. & A VERY RARE SHAPE)**
- \_\_\_ 88. **U.S. Glass Cosmos and Cane domed Flared Compote–White (attractive; nice & frosty)**
- \_\_\_ 89. **7 ¾" Fenton Peacock and Grape 8 Ruffled spatula ftd. Bowl – P. Opal. (scarce and desirable; was to be sold in Maryland)**
- \_\_\_ 90. **6 7/8" TALL X 6 ½" DIAM. X 5 ¼" BASE FENTON DIAMOND RIB UNSWUNG JARDINIERE WHIMSEY – MARI. (RARE ITEM; NICE DARK COLOR WITH SATINY FINISH)**
- \_\_\_ 91. **17 ¾" TALL X 5 ¼" BASE FENTON RUSTIC SWUNG FUNERAL VASE – BLUE (RARE; VERY DESIRABLE; BRIGHT SATINY IRID.)**
- \_\_\_ 92. **Fenton Holly 6 Ruffled Hat Shape – Red (desirable item; nice bright irid.)**
- \_\_\_ 93. **9" FENTON PLAID 8 RUFFLED BOWL – DARK RED (VERY RARE & VERY DESIRABLE)**
- \_\_\_ 94. **7 3/4" FENTON LIONS FLAT PLATE – MARI. (ONE OF THE BETTER EXAMPLES KNOWN)**
- \_\_\_ 95. **FENTON BLUEBERRY HANDLED WATER PITCHER – BLUE (RARE AND VERY DESIRABLE; GREAT COLOR & IRID. NICE!)**
- \_\_\_ 96. **(2) Fenton Blueberry Tumblers – Blue (one has blue highlights; one with a Marigold overlay – selling choice)**
- \_\_\_ 97. **FENTON BLUEBERRY HANDLED WATER PITCHER – DK. MARI. (GREAT COLOR)**
- \_\_\_ 98. **FENTON ORANGE TREE ORCHARD 7 PC. BULBOUS WATER SET – ELEC. BLUE PITCHER ( PITCHER IS THE BEST I'VE SEEN)**
- \_\_\_ 99. **9 ¼" FENTON DRAGON AND STRAWBERRY LG. ICE CREAM BOWL – BLUE / ELEC. BLUE (VERY DESIRABLE WITH GREAT DETAIL)**
- \_\_\_ 100. **FENTON STRAWBERRY SCROLL BULBOUS WATER PITCHER – BLUE (VERY RARE AND A DESIRABLE SHAPE – VERY NICE)**
- \_\_\_ 101. **Fenton Holly Goblet Shaped Stemmed Compote – Green (scarce color and irid.)**
- \_\_\_ 102. **FENTON ORANGE TREE FTD. HATPIN HOLDER – GREEN (RARE COLOR – NICE)**
- \_\_\_ 103. **Fenton Kittens 4 Ruffled Toothpick Holder – Blue (very scarce; tough to find)**
- \_\_\_ 104. **FENTON BLACKBERRY SPRAY 6 RUFFLED HAT SHAPE – AQUA OPAL. (RARE & NICE)**
- \_\_\_ 105. **7 ¾" FENTON "ILLINOIS SOLDIERS' AND SAILORS' HOME – QUINCY ILL." FLAT PLATE – BLUE ( ONE OF THE BETTER EXAMPLES)**
- \_\_\_ 106. **6" FENTON "UTAH LIQUOR CO. / LEWIS 66 RYE / 228 S. MAIN ST." GARDEN MUMS PLATE – AMYTH. (RARE, DESIRABLE; NICE SATINY FINISH)**
- \_\_\_ 107. **6 3/8" FENTON SAILBOATS FLAT PLATE – BLUE (SUPER BRIGHT FINISH & DETAIL)**
- \_\_\_ 108. **6 ¼" Fenton Lions deep Flared Bowl – Blue (a really top notched example – great detail)**
- \_\_\_ 109. **8 ½" Fenton Autumn Acorn 6 Ruffled Bowl – Amyth. (satiny finish)**
- \_\_\_ 110. **7 3/8" FENTON "1911 B.P.O.E – ATLANTIC CITY" FLARED PLATE – BLUE (RARE; GREAT DETAIL & COLOR; PERFECT)**
- \_\_\_ 111. **9 ¼" FENTON "COMPLIMENTS OF SPECTOR'S DEPARTMENT STORE" PLATE – DK. MARI. (DARK WITH GREAT COLOR AND IRID. – SPRAY SALT EFFECT IN CENTER)**
- \_\_\_ 112. **9 ¼" FENTON PERSIAN MEDALLION FLARED PLATE – DK. MARI. (ONE OF THE BETTER EXAMPLES OF THIS RARE PLATE)**
- \_\_\_ 113. **10 ½" Fenton Stag and Holly Lg. ball ftd. I.C. Shaped Bowl – Oxblood (satiny finish with silvery highlights; can't see through it)**
- \_\_\_ 114. **9" TALL FENTON RUSTIC STANDARD SWUNG VASE – P. OPAL. (VERY RARE AND VERY DESIRABLE; TOUGH TO FIND)**
- \_\_\_ 115. **18 ¾" TALL X 5 ¼" BASE X 8" FLARE N TREE TRUNK SWUNG FUNERAL VASE WITH PLUNGER BASE – AMYTH. (RARE; VERY DESIRABLE – PERFECT WITH GREAT IRID.)**
- \_\_\_ 116. **14" TALL X 4 ¾" BASE N TREE TRUNK MID SIZE SWUNG VASE – CUSTARD / NUTMEG FINISH (RARE COLORED VARIATION FINISH)**
- \_\_\_ 117. **9 ½" Tall x 3 ½" Base N Tree Trunk Standard Swung Vase – Blue (scarce, beautiful dark irid.)**
- \_\_\_ 118. **7 ½" Tall x 3 ½" Base N Tree Trunk Standard Squatty Vase – Blue (bright, dark irid.)**
- \_\_\_ 119. **9 ½" TALL DUGAN BIG BASKETWEAVE SWUNG VASE–CELESTE BLUE; (BRIGHT IRID.; FANTASTIC EXAMPLE)**
- \_\_\_ 119A. **10 ¼" Tall Dugan Big Basketweave Swung Vase – non-iridized Celeste Blue**
- \_\_\_ 120. **12 ¾" TALL X 4 3/4" BASE N TREE TRUNK MID SIZE SWUNG VASE – LIME ICE GREEN (RARE DARK TINTED BASE COLOR)**
- \_\_\_ 121. **13" TALL X 4 ¾" BASE N TREE TRUNK MID SIZE SWUNG VASE – ICE BLUE (VERY RARE AND VERY DESIRABLE; GREAT IRID.)**

- \_\_\_ 122. 12 11/13" TALL X 4 11/16" BASE N TREE TRUNK MID SIZE SWUNG VASE – BLUE (RARE BASE COLOR WITH A DARK IRID.)
- \_\_\_ 123. 13 1/8" Tall x 4 11/16" Base N Tree Trunk Mid Size Swung Vase – Green (very scarce with nice color and irid.)
- \_\_\_ 124. 12 1/4" Tall x 4 5/8" Base N Tree Trunk Mid Size Swung Vase – Mari. (really tough item with a dark satiny finish)
- \_\_\_ 125. 10 1/2" TALL N DIAMOND POINT SWUNG VASE – AQUA OPAL. (RARE AND VERY DESIRABLE; GREAT OPAL. AND OVERLAY)
- \_\_\_ 126. 10 1/2" TALL N DIAMOND POINT SWUNG VASE – SAPPHIRE (VERY RARE AND VERY DESIRABLE; GREAT COLOR AND IRID.)
- \_\_\_ 127. 7 1/4" TALL N DIAMOND POINT SQUATTY VASE – ICE GREEN (RARE COLOR AND A RARE SIZE)
- \_\_\_ 128. 11 3/4" Tall N Diamond Point Swung Vase – Emerald Green (super example with bright irid.)
- \_\_\_ 129. 9" Tall Dugan Circle Scroll Swung Vase – Mari. (very scarce; tough to find)
- \_\_\_ 130. N IVY TOWN PUMP NOVELTY – PURP. (RARE AND DESIRABLE; PERFECT WITH NICE IRID.)
- \_\_\_ 131. N TORNADO SMALL SIZE TRI-CORNERED VASE – DK. MARI. (RARE AND DESIRABLE; DARK COLOR AND IRID.)
- \_\_\_ 132. 11" TALL N LEAF COLUMNS SWUNG VASE – LIME ICE GREEN (RARE BASE COLOR; SUPER ITEM AND NICE)
- \_\_\_ 133. 12 1/2" Tall x 4 1/4" Base N Wide Panel Mid Size Swung Vase – Green (very scarce; nice color)
- \_\_\_ 134. N Graceful 6 Ruffled Vase – Purp. (scarce)
- \_\_\_ 135. N WIDE PANEL LG. 4 LILY EPERGNE – AMYTH. (RARE AND DESIRABLE; NICE BRIGHT HIGHLIGHTS – REALLY TOUGH)
- \_\_\_ 136. N WIDE PANEL LG. 4 LILY EPERGNE – GREEN (RARE WITH A NICE SATINY FINISH)
- \_\_\_ 137. N WIDE PANEL LG. 4 LILY EPERGNE – WHITE (VERY RARE; BASE OF (2) LILIES ARE CHIPPED)
- \_\_\_ 138. N WIDE PANEL LG. 4 LILY EPERGNE – MARI. (RARE & DESIRABLE – NICE COLOR & IRID.)
- \_\_\_ 139. Contemporary Fenton Lg. Spiral 4 Lily Epergne – Irid. Pastel Green Opal. (a beautiful outfit)
- \_\_\_ 140. Tall Contemporary Fenton Hobnail 3 Lily Epergne – Aqua Opal. (unusual)
- \_\_\_ 141. Tall Contemporary Fenton Hobnail 3 Lily Epergne – Purp. (absolutely fantastic irid.)
- \_\_\_ 142. 9" N GREEK KEY FLAT PLATE WITH NARROW BASE WITH UNIRIDIZED RIBBED EXT. – BLUE (EXTREMELY RARE AND VERY DESIRABLE; SUPER)
- \_\_\_ 143. 8 3/4" N GREEK KEY 8 RUFFLED BOWL WITH RIBBED EXT. – LIME ICE GREEN (EXTREMELY RARE WITH GREAT BASE COLOR AND IRID. – SUPER IRID.)
- \_\_\_ 144. 9" N GREEK KEY PLATE WITH BASKETWEAVE EXT. – GREEN (RARE AND VERY DESIRABLE; SUPER SATINY FINISH)
- \_\_\_ 145. N HEARTS AND FLOWERS STEMMED 6 RUFFLED COMPOTE WITH PLAIN EXT. – ICE GREEN (RARE; NICE COLOR AND IRID.)
- \_\_\_ 146. N HEARTS AND FLOWERS STEMMED 6 RUFFLED COMPOTE WITH PLAIN EXT. – ICE BLUE (RARE; NICE COLOR AND IRID.)
- \_\_\_ 147. N HEARTS AND FLOWERS STEMMED 6 RUFFLED COMPOTE WITH RIBBED EXT. – AQUA OPAL. (NICE COLOR AND IRID.)
- \_\_\_ 148. N Hearts and Flowers Stemmed 6 Ruffled Compote with Ribbed Ext. – Blue Opal. (non-iridized but quite tough to find)
- \_\_\_ 149. N HEARTS AND FLOWERS STEMMED 6 RUFFLED COMPOTE WITH RIBBED EXT. – DK. DK. MARI. (SUPER IRID.)
- \_\_\_ 150. N HEARTS AND FLOWERS STEMMED 6 RUFFLED COMPOTE WITH RIBBED EXT. – ELEC. BLUE (SUPER COLOR AND IRID.)
- \_\_\_ 151. N HEARTS AND FLOWERS STEMMED 6 RUFFLED COMPOTE WITH RIBBED EXT. – GREEN (VERY RARE; GREAT IRID.)
- \_\_\_ 152. N HEARTS AND FLOWERS STEMMED 6 RUFFLED COMPOTE WITH RIBBED EXT. – PURP. (SUPER IRID; GREAT COLOR)
- \_\_\_ 153. 9" N HEARTS AND FLOWERS FLARED PLATE WITH RIBBED EXT. – DK. MARI. (RARE WITH A DARK SATINY FINISH)
- \_\_\_ 154. 9" N Hearts and Flowers 8 Ruffled Bowl with Ribbed Ext. – Ice Blue (scarce with nice color)
- \_\_\_ 155. N MEMPHIS 8 RUFFLED PUNCH BOWL AND BASE – MARI. (VERY DESIRABLE; DARK COLOR AND IRID.)
- \_\_\_ 156. N POPPY RUFFLED RELISH TRAY WITH RIBBED EXT. – AQUA OPAL. (RARE ITEM WITH A GREAT BUTTERSCOTCH FINISH)
- \_\_\_ 157. 6 1/2" N "FERN BRAND CHOCOLATES" 2 SIDED CANDY TRAY – AMYTH. (RARE; DESIRABLE WITH NICE DETAIL AND COLOR)
- \_\_\_ 158. N LATTICE AND POINSETTIA 8 RUFFLED FTD. BOWL WITH RIBBED EXT. – ICE BLUE (RARE WITH GREAT IRID. – SOME POINTS NOT FILLED)
- \_\_\_ 159. N WISHBONE DEEP 8 RUFFLED BOWL WITH RUFFLES AND RINGS EXT. – ELEC. BLUE (SUPER EXAMPLE; BRIGHT BLUE IRID.)
- \_\_\_ 160. N PEACOCKS STIPPLED PLATE WITH RIBBED EXT. – ELEC. BLUE (FANTASTIC!)
- \_\_\_ 161. N PEACOCKS PLATE WITH RIBBED EXT. – GREEN (RARE; GREAT COLOR AND IRID.)
- \_\_\_ 162. N PEACOCKS BOWL WITH P.C.E. AND RIBBED EXT. – GREEN (REALLY NICE EXAMPLE; BRIGHT HIGHLIGHTS)
- \_\_\_ 163. N PEACOCKS 8 RUFFLED BOWL WITH RIBBED EXT. – AQUA OPAL. TIPS (SUPER IRID.; OPAL. ON EDGE)

- \_\_\_ 164. N PEACOCKS 8 RUFFLED BOWL WITH RIBBED EXT. – ICE BLUE (RARE COLOR; NICE IRID.)
- \_\_\_ 165. N PEACOCKS FLARED PLATE WITH RIBBED EXT. – ICE BLUE (GREAT IRID. – NICE!!!)
- \_\_\_ 166. N THREE FRUITS STIPPLED PLATE WITH RIBBED EXT. – AQUA OPAL. (RARE AND DESIRABLE; OPAL. TIPS)
- \_\_\_ 167. N THREE FRUITS STIPPLED 8 RUFFLED BOWL WITH RIBBED EXT. – AQUA OPAL. (ANOTHER RARE ITEM WITH OPAL. TIPS)
- \_\_\_ 168. N GRAPE LEAVES 8 RUFFLED BOWL WITH PANSY AND PLUME EXT. – ICE BLUE (EXTREMELY RARE ITEM; NICE)
- \_\_\_ 169. N Strawberry Stippled 8 Ruffled Bowl with Ribbed Ext –Purp.-very scarce; satiny finish)
- \_\_\_ 170. N ORIENTAL POPPY 7 PC. TANKARD WATER SET – WHITE (RARE AND VERY DESIRABLE SET; NiCE AND FROSTY)
- \_\_\_ 171. N Oriental Poppy 7 pc. Tankard Water Set – Mari. (super irid. on the pitcher – nice set)
- \_\_\_ 172. N GOOD LUCK 8 RUFFLED BOWL WITH NARROW BASE WITH RIBBED EXT. – RENNINGER BLUE (RARE; NICE)
- \_\_\_ 173. N STRAWBERRY STIPPLED 8 RUFFLED BOWL WITH RIBBED EXT. – LIME ICE GREEN (SUPER BRIGHT IRID. AND BASE COLOR)
- \_\_\_ 174. 9" N EMBROIDERED MUMS PLATE WITH RIBBED EXT. – ICE GREEN (RARE WITH SUPER IRID. – REALLY, REALLY BRIGHT)
- \_\_\_ 175. 8 ¾" N EMBROIDERED MUMS BOWL WITH P.C.E. AND RIBBED EXT. – SAPPHIRE (EXTREMELY RARE; NICE)
- \_\_\_ 176. 8 ½" N EMBROIDERED MUMS 8 RUFFLED BOWL WITH RIBBED EXT. – GREEN OPAQUE OPAL. (ONE OF VERY FEW OF THESE EXAMPLES KNOWN)
- \_\_\_ 177. 8 ¾" N EMBROIDERED MUMS 8 RUFFLED BOWL WITH RIBBED EXT. – AQUA OPAL. (RARE, IRID. IS SORTA SILVERY)
- \_\_\_ 178. 8 ¾" N EMBROIDERED MUMS 8 RUFFLED BOWL WITH RIBBED EXT. – ELEC. BLUE (SUPER COLOR WITH BRIGHT BLUE HIGHLIGHTS)
- \_\_\_ 179. 8" M'BURG (?) DOZEN ROSES 3 FTD. FLARED BOWL – GREEN (SUPER RADIUM FINISH – RARE IN THIS COLOR)
- \_\_\_ 180. M'BURG HOBSTAR AND FEATHER GIANT ROSE BOWL – GREEN (EXTREMELY RARE; PERFECT WITH GREAT DETAIL AND IRID.)
- \_\_\_ 181. M'burg Sunflower Pin Tray – Green (desirable with a flake on underside)
- \_\_\_ 182. 8 ¼" M'burg Mayan I.C. Shaped Bowl – Green (super radium finish)
- \_\_\_ 183. 10" M'BURG PEACOCK 6 RUFFLED CRIMPED EDGE BOWL– GREEN (RADIUM & NICE)
- \_\_\_ 184. 10" M'BURG MANY STARS (FIVE POINTED STAR) 6 RUFFLED BOWL – GREEN (RARE AND RADIUM; SUPER EXAMPLE)
- \_\_\_ 185. 10" M'BURG "BERNHEIMER BROTHERS" MANY STARS 6 RUFFLED BOWL – BLUE (VERY RARE; DESIRABLE; REALLY NICE)
- \_\_\_ 186. 6" M'BURG PEACOCK AT THE URN 6 RUFFLED SAUCE – LT. BLUE (VERY SCARCE BASE COLOR – HAS A SATINY FINISH)
- \_\_\_ 187. M'BURG HOBNAIL TUMBLER – AMYTH. (RARE; DESIRABLE; ONE HOB IS CHIPPED)
- \_\_\_ 188. M'BURG SEACOAST PIN TRAY – AMYTH. (RARE AND DESIRABLE; GREAT DETAIL)
- \_\_\_ 189. M'burg Sunflower Pin Tray – Lt. Mari. (really light irid.; tough to find)
- \_\_\_ 190. M'BURG HOBSTAR AND FEATHER GIANT ROSE BOWL – AMYTH. (RARE; DESIRABLE; GREAT DETAIL AND COLOR – PERFECT)
- \_\_\_ 191. 6 ¼" M'BURG PEACOCK AT THE URN FLAT PLATE – AMYTH. (SUPER & REALLY FLAT)
- \_\_\_ 192. 5 ¼" M'burg Peacock Deep Flared ind. Berry Bowl – Amyth. (super radium finish)
- \_\_\_ 193. 8 ¾" M'burg Peacock: at the Urn "Mystery" 6 Ruffled Bowl – Amyth. (scarce; nice satiny finish)
- \_\_\_ 194. 10" M'burg Peacock at the Urn Lg. 6 Ruffled Bowl – Amyth. (satiny and really nice)
- \_\_\_ 195. 9 5/8" M'BURG GRAPE LEAVES LG. 6 RUFFLED CRIMPED BOWL – AMYTH. (SUPER RARE WITH A FANTASTIC RADIUM FINISH)
- \_\_\_ 196. 7 ¼" M'BURG LETTERED COURTHOUSE 6 RUFFLED BOWL – AMYTH. (RADIUM & NICE – GREAT COLOR AND DETAIL)
- \_\_\_ 197. M'burg Swirl Hobnail Rose Bowl – Purp. (scarce; nice irid.)
- \_\_\_ 198. 9 ½" M'burg Whirling Leaves 6 Ruffled Bowl – Amyth. (super radium irid.)
- \_\_\_ 199. 6" Fenton "Season's Greetings – Eat Paradise Soda" Flared Plate – Amyth. (very scarce with a nice satiny finish)
- \_\_\_ 200. 9 ¼" N POPPY SHOW PLATE – GREEN (SUPER RARE WITH A GREAT, BRIGHT IRID.)
- \_\_\_ 201. 9 ¼" N POPPY SHOW PLATE – ELEC. BLUE (SUPER, SUPER EXAMPLE – FANTASTIC!!!)
- \_\_\_ 202. 9 ½" N POPPY SHOW PLATE – ICE BLUE (REALLY NICE EXAMPLE WITH GREAT IRID.)
- \_\_\_ 203. 9" N Poppy Show Plate – White (scarce; nice average irid.)
- \_\_\_ 204. 9 ¼" N POPPY SHOW PLATE – AMYTH. (RARE; TOUGH TO FIND; ATTRACTIVE IRID.)
- \_\_\_ 205. 9" N Poppy Show Plate – Mari. (very scarce – nice color and irid.)
- \_\_\_ 206. 8 ¾" N POPPY SHOW 8 RUFFLED BOWL – MARI. (NICE PINK & BLUE HIGHLIGHTS)
- \_\_\_ 207. 8 ¾" N Poppy Show 8 Ruffled Bowl – White (very scarce; nice average irid.)
- \_\_\_ 208. 9 ½" N ROSE SHOW FLARED PLATE – BLUE (RARE WITH A NICE MULTI-COLORED IRID.)
- \_\_\_ 209. 9 ½" N Rose Show Flared Plate – White (very scarce with great irid.)
- \_\_\_ 210. 9 ½" N ROSE SHOW FLARED PLATE – AMYTH. (RARE; NICE MULTI-COLORED IRID.)



- \_\_\_ 211. **N ROSE SHOW 8 RUFFLED BOWL – AQUA OPAL. (SUPER PASTEL FINISH; GREAT IRID)**  
 \_\_\_ 212. **N ROSE SHOW 8 RUFFLED BOWL – ICE GREEN (PERFECT; GREAT COLOR & IRID.)**  
 \_\_\_ 213. **N ROSE SHOW 8 RUFFLED BOWL – ICE BLUE (PERFECT; GREAT COLOR & IRID.)**  
 \_\_\_ 214. N Rose Show 8 Ruffled Bowl – White (very scarce with nice irid.)  
 \_\_\_ 215. **N ROSE SHOW 8 RUFFLED BOWL – GREEN (VERY RARE AND VERY DESIRABLE; NICE)**  
 \_\_\_ 216. **N ROSE SHOW 8 RUFFLED BOWL – BLUE (RARE W/ NICE MULTI-COLORED FINISH)**  
 \_\_\_ 217. **N ROSE SHOW 8 RUFFLED BOWL – AMYTH. (VERY SCARCE W/ NICE COLOR AND IRID.)**  
 \_\_\_ 218. N Rose Show 8 Ruffled Bowl – Dk. Mari. (very scarce with really nice dark color)  
 \_\_\_ 219. **N ROSE SHOW 8 RUFFLED BOWL –LT. AMYTH. (WANTS TO BE PASTEL; NICE)**  
 \_\_\_ 220. **IMPERIAL LOGANBERRY VASE – PURP. (ABSOLUTELY FANTASTIC!!! PERIOD!!!)**  
 \_\_\_ 221. **4 ¼" TALL X 5 ¾" DIAM. IMPERIAL PARLOR PANELS SQUATTY 6 RUFFLED VASE – PASTEL MARI. (RARE NON-SWUNG VARIATION WITH GREAT IRID.)**  
 \_\_\_ 222. 11 ¼" Tall Imperial Parlor Panels Swung Vase – Purp. (super color and irid.)  
 \_\_\_ 223. 12 ¼" Tall Imperial Parlor Panels Swung Vase – Lt. Amyth. (super base color and irid.)  
 \_\_\_ 224. 8 ¾" Tall Imperial Parlor Panels Swung Vase – Dk. Mari. (super dark color)  
 \_\_\_ 225. **IMPERIAL POPPY SHOW VASE – PURP. (FANTASTIC EXAMPLE WITH SUPER IRID.)**  
 \_\_\_ 226. Imperial Poppy Show Vase – Mari. (very scarce with nice dark color)  
 \_\_\_ 227. **4 ¾" TALL X 7 ½" DIAM. IMPERIAL COLUMBIA 6 RUFFLED VASE – PURP. (VERY RARE COLOR FOR THIS ITEM)**  
 \_\_\_ 228. 10 ¾" Tall Imperial Beaded Bullseye Swung Vase – Green (odd tint)  
 \_\_\_ 229. Imperial Pansy One Handled Nappy – Purp. (super, super irid.)  
 \_\_\_ 230. **IMPERIAL FASHION HANDLED WATER PITCHER – PURP. (RARE; DESIRABLE)**  
 \_\_\_ 231. **4 ¼" BASE X 5" TALL IMPERIAL ZIPPER LOOP HANDLED FINGER LAMP – SMOKE (RARE; VERY DESIRABLE – SUPER IRID.)**  
 \_\_\_ 232. **4 ¼" BASE X 5 ½" TALL IMPERIAL ZIPPER LOOP HANDLED FINGER LAMP – DK. MARI. (SUPER COLOR AND IRID. – REALLY NICE!!!)**  
 \_\_\_ 233. 8 ½" Imperial Floral and Optic 3 ftd. Flared Bowl with Double Dutch Int.–Elec. Purp. (rare with super color and irid.)  
 \_\_\_ 234. 7 ½" Imperial Sand and Shell Deep 8 Ruffled Bowl – Elec. Purp. (super color and bright irid.)  
 \_\_\_ 235. **IMPERIAL CHATELINE HANDLED WATER PITCHER – ELEC. PURP. (RARE AND VERY DESIRABLE – SUPER IRID.)**  
 \_\_\_ 236. 4 ½" Tall Imperial Embossed Scroll Stemmed 8 Ruffled Compote – Purp. (super example)  
 \_\_\_ 237. 10 ¼" Imperial Grape Lg. 8 Ruffled Master Berry Bowl – Purp. (a big bowl with super irid.)  
 \_\_\_ 238. **IMPERIAL OPEN ROSE ROSE BOWL – PURP. (RARE COLOR – GREAT COLOR AND IRID.)**  
 \_\_\_ 239. **IMPERIAL LUSTRE ROSE HANDLED WATER PITCHER–PURP. (RARE; GREAT COLOR & IRID.)**  
 \_\_\_ 240. **IMPERIAL HATTIE GIANT ROSE BOWL – AMBER (EXTREMELY RARE COLOR FOR THIS PATTERN IN A RARE SHAPE – NICE!!!)**  
 \_\_\_ 241. **IMPERIAL GRAPE ROSE BOWL – AMBER (RARE SHAPE FOR THIS PATTERN)**  
 \_\_\_ 242. 8" Imperial Open Rose 8 Ruffled Bowl – Amber (nice color and irid.)  
 \_\_\_ 243. **9 ¾" IMPERIAL EMBOSSED SCROLL FLAT PLATE – PURP. (SUPER, FLAT EXAMPLE)**  
 \_\_\_ 244. 9" Imperial Pansy low 8 Ruffled Bowl – Green (sorta Helios)  
 \_\_\_ 245. Imperial Interior Optic Bulbous Vase with Floral Spray Etching – Smoke (very attractive; unusual)  
 \_\_\_ 246. 5 ¾" Imperial Open Rose 8 Ruffled Sauce – Purp. (super color and irid.)  
 \_\_\_ 247. 5 ¾" Imperial Embossed Scroll 8 Ruffled Sauce with File Ext. – odd Amyth. (odd tint)  
 \_\_\_ 248. Imperial Pansy Handled Creamer – Purple  
 \_\_\_ 249. 7 ¾" Imperial Open Rose Exterior / Plain Interior Flared Bowl – unirlidized Amberina (not signed)  
 \_\_\_ 250. **9" IMPERIAL GRAPE LOW 8 RUFFLED BOWL W/ GRAPE LEAF INTAGLIO BASE – PASTEL MARI. (VERY RARE VARIATION WITH AN INTAGLIO LEAF PATTERN UNDER BASE)**  
 \_\_\_ 251. 8 ½" Imperial Parlor Panels Swung Vase with Enam. Floral Decoration – unirlidized Black (really different; enameled and nice)  
 \_\_\_ 252. 9" Tall Imperial Miniature Morning Glory Tall Swung Vase – Smoke (tall cutie)  
 \_\_\_ 253. 5" Imperial Thumbprint and Oval ind. 6 Ruffled Berry Bowl – Smoke (very scarce)  
 \_\_\_ 254. (1) Imperial Soda Gold Squatty Candlestick – Smoke (tough if ya need one)  
 \_\_\_ 255. 4 ¼" Tall x 10" Diam. Imperial Lg. Wide Panel Cupped in Center Bowl – Smoke (a super attractive large item)  
 \_\_\_ 256. Imperial Flute Toothpick Holder – Dk. Mari. (nice dark color)  
 \_\_\_ 257. Imperial Interior Wide Panel Handled Flower Basket – Pastel Mari. (scarce)  
 \_\_\_ 258. (2) Imperial Chesterfield Sherbets and Underplates – Pastel Mari. (selling the pair for one money)  
 \_\_\_ 259. **1983 ICGA ST. LOUIS, MO. FROLICKING BEARS RUFFLED SPITTOON – VASELINE OPAL. (SUPER ATTRACTIVE ITEM)**  
 \_\_\_ 260. 1983 HOACGA Loving Cup Souvenir – Mari. / Custard (scarce; manuf. check in handle)  
**ADDITIONAL ITEM**  
 \_\_\_ 124A **13" TALL X 4 ¾" BASE N THIN RIB MID SIZE SWUNG VASE – VASELINE (EXTREMELY RARE; BEAUTIFUL; NO PHOTO AVAILABLE)**

