

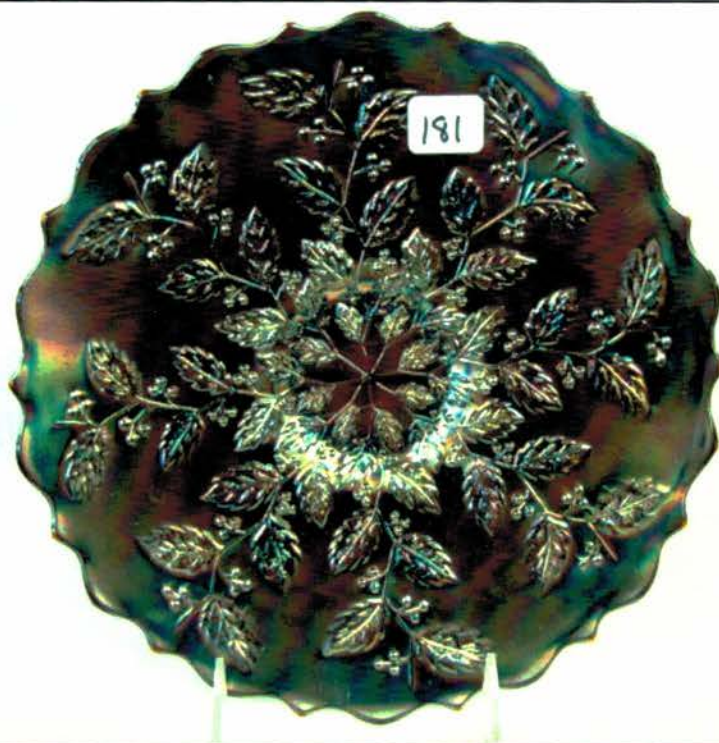


Grace Moss and Byron Rinehart grew up on adjoining farms in Gilmer County West Virginia. They were married in 1936, and later moved to Charleston West Virginia where Byron worked and retired from the Dupont corporation. They were married for 57 ½ years until Byron passed away in 1994. Grace still resides in Charleston. Byron did not drive or own an automobile until 1953, so their carnival glass collecting did not start until the late 1950's. At that time they joined both ICGA and ACGA as charter members. In their early years of collecting they met such collectors as Joe Olson- Joe & Rose Presnick-Catherine and Willie Addis- Bud and Betty Heeley- Bill and Carol Richard's- Jim and Merle Swartout- the Hostettler's- Bixler's- Schaeffer's and other fine people interested in collecting Carnival Glass. Grace and Byron traveled many miles throughout West Virginia and surrounding states looking for Carnival and like everyone else seeking that rare and unusual find, which they accomplished!

Grace and Byron became members of other clubs and attended and supported the conventions all over the country. The Rinehart's thoroughly enjoyed the friendships that they had made over the years. Since Byron's death in 1994, Grace's collecting has been limited but has tried to attend conventions and auctions with family whenever possible. Their collection has received many awards and their convention displays were always among the top displays.

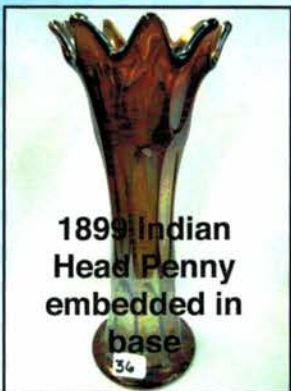
Grace just recently celebrated her 95th birthday on April 3rd with a party by her church in Charleston.

Grace remains a remarkably strong lady and is living at home alone. Grace would like to thank every one of you for all the cards, letters and phone calls during her recent injury and her birthday. Grace would like to extend a big THANK YOU to all who will participate in her auction of her treasured collection. She would also like to thank everyone for all the years of love and friendship to her and Byron. Grace wished all of you good health and happiness as you continue your search for that rare and unusual piece of carnival glass. God bless.

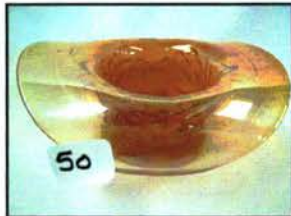
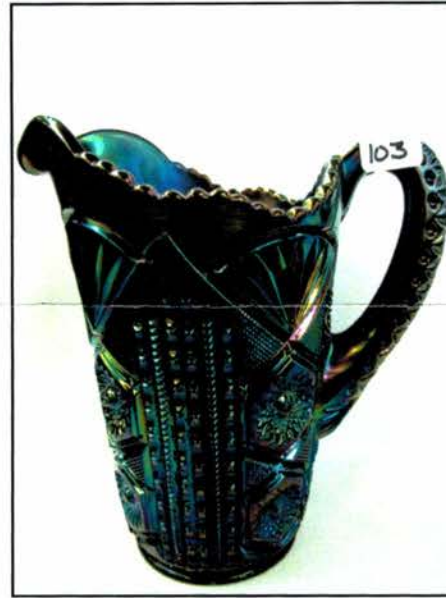




Friday November 11th Carnival Glass. Lots 1 - 180

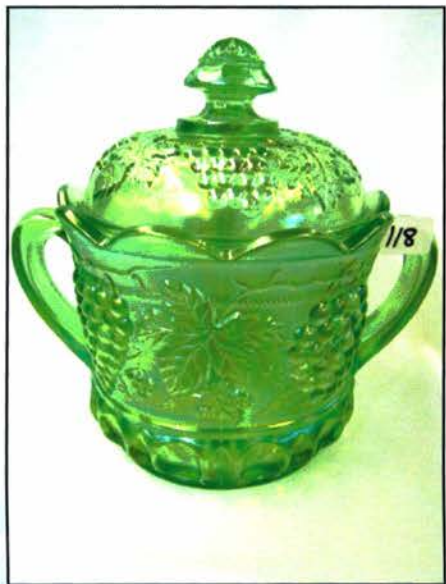
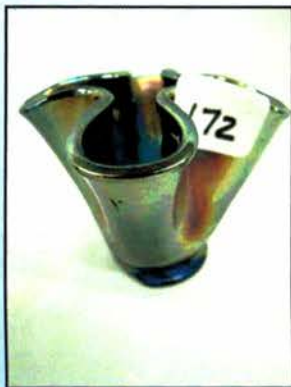


1899 Indian Head Penny embedded in base



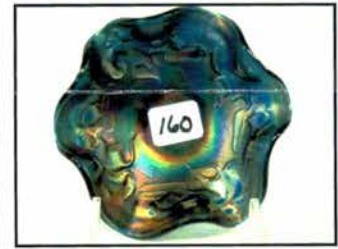
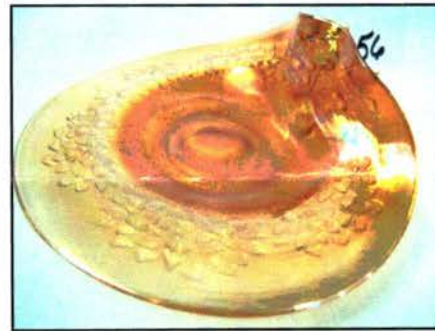
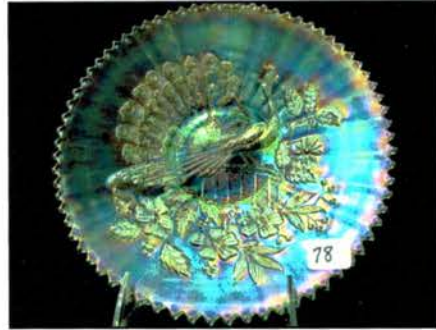
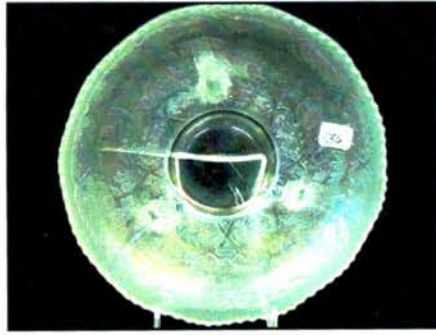
RARE Kittens VASE!

Please visit our website at [www.jimwrodauction.com](http://www.jimwrodauction.com)  
Absentee bid with the "New" Auction Flex bidding platform

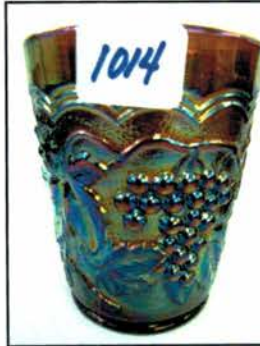




Friday November 11th Carnival Glass. Lots 1 - 180



Saturday November 12th Tumblers, Lots 1001-1080a





November 11-12, 2011 Carnival Listing

- |  |   |
|--|---|
| 1 <u>300</u> pastel swan salt-white  | 48 <u>30</u> West. mari. 5" Hobstar & Fruit 2-sides up bowl                                   |
| 2 <u>15</u> pastel swan salt-pink  | 49 <u>40</u> mari. Stork & Rushes JIP hat made from tumbler                                   |
| 3 <u>25</u> pastel swan salt-celeste   | 50 <u>140</u> mari. Water Lily & Cattails hat-2 sides down made from a tumbler                |
| 4 <u>40</u> pastel swan salt-marigold  | 51 <u>45</u> teal ribbed hat-2 sides down-made from tumbler                                   |
| 5 <u>25</u> pastel swan salt-lime green opal-not Carnival  | 52 <u>30</u> N-wood mari. G & C nappy-made from punch cup                                     |
| 6 <u>80</u> pastel swan salt-dark peach opal   | 53 <u>25</u> mari. Circle Scroll tri-corner hat   |
| 7 <u>30</u> pastel swan salt-celeste   | 54 <u>75</u> Sowerby purple Scroll Embossed sweetmeat   |
| 8 <u>55</u> pastel swan salt-vaseline  | 55 <u>15</u> N-wood G & C mari. gravy boat made from punch cup                                |
| 9 <u>30</u> pastel swan salt-purple  | 56 <u>165</u> Fenton mari. Orange Tree pin tray made from punch cup. Neat item!               |
| 10 <u>35</u> mari. Be Wise owl bank  | 57 <u>120</u> Fenton blue 5" Feather Serpent tri-corner dish                                  |
| 11 <u>60</u> mari. Lucky barrel bank   | 58 <u>20</u> Fenton lavender Orange Tree goblet   |
| 12 <u>10</u> 3-8" Twigs vases  | 59 <u>10</u> Fenton mari. Holly 2-sides up compote  |
| 13 <u>50</u> 2-white salts   | 60 <u>10</u> purple Daisy & Button miniature hat  |
| 14 <u>30</u> 2-5" shells-purple & teal   | 61 <u>140</u> N-wood AO Beaded Cable rosebowl   |
| 15 <u>50</u> mari. My Lady powder jar  | 62 <u>140</u> N-wood pastel AO Beaded Cable rosebowl  |
| 16 <u>160</u> Fenton 2-color candlestick   | 63 <u>35</u> N-wood mari. Beaded Cable rosebowl   |
| 17 <u>50</u> Fenton green Butterfly & Berry-creamer  | 64 <u>120</u> N-wood blue Beaded Cable rosebowl   |
| 18 <u>10</u> Fenton green Butterfly & Berry-cov'd sugar-cracked                                      | 65 <u>145</u> N-wood green Beaded Cable rosebowl  |
| 19 <u>60</u> Fenton green Butterfly & Berry-spooner  | 66 <u>150</u> N-wood AO Drapery rosebowl  |
| 20 <u>60</u> Fenton green Butterfly & Berry-butterdish w/mari lid                                    | 67 <u>55</u> N-wood purple Drapery rosebowl   |
| 21 <u>10</u> mari. 6" vase in metal holder   | 68 <u>65</u> N-wood purple Bushel Basket  |
| 22 <u>25</u> mari. 7" Butterfly & Berry vase   | 69 <u>235</u> N-wood mari. Diamond Point basket   |
| 23 <u>30</u> <sup>purple</sup> blue 7" Butterfly & Berry flared vase                                 | 70 Rare mari. Apple Tree spittoon shape vase made from a water pitcher. Nicely done!          |
| 24 <u>60</u> green 7" Butterfly & Berry vase   | 71 <u>75</u> Rare milk glass Apple Tree spittoon shape vase made from a water pitcher. 1920's |
| 25 <u>10</u> Imp. 6" mari. Morning Glory vase  | 72 <u>475</u> Fenton blue Apple Tree 5 pc. water set  |
| 26 <u>20</u> pair mari. Melon Rib salt & peppers   | 73 Rare bright mari. Fenton Diamond Rib jardiniere. Beautiful color!                          |
| 27 <u>1000</u> Fenton RED Cut Ovals candlestick. RARE!   | 74 <u>2900</u> N-wood 9" purple Peacocks plate  |
| 28 <u>950</u> Fenton RED Florentine 8" candlesticks  | 75 <u>275</u> N-wood 9" light amy. Peacocks plate   |
| 29 <u>150</u> Imp. Flute amber creamer/sugar   | 76 <u>425</u> N-wood 9" elect. blue Peacocks plate  |
| 30 <u>25</u> mari. Flute toothpick   | 77 <u>180</u> N-wood 9" white Peacocks plate  |
| 31 <u>35</u> green Flute toothpick   | 78 <u>250</u> N-wood 9" IG Peacocks plate   |
| 32 <u>50</u> elec. purple Flute toothpick  | 79 <u>275</u> N-wood 9" purple Peacocks PCE bowl  |
| 33 <u>10</u> Imp. purple Octagon toothpick. chip on collar base                                      | 80 <u>500</u> N-wood 9" purple Poppy Show plate   |
| 34 <u>20</u> Imp. mari. Octagon toothpick.   | 81 <u>500</u> N-wood 9" white Poppy Show plate  |
| 35 <u>400</u> mari. Crucifix candlestick   | 82 <u>175</u> N-wood 9" dark mari. Strawberry plate. NICE irid.!                              |
| 36 <u>100</u> Rare Fenton 10" purple Long Thumbprint vase w/1899 Indian Head penny embossed in base. | 83 <u>140</u> N-wood 9" green Strawberry PCE bowl   |
| 37 <u>15</u> Fenton 9" green Diamond Rib vase  | 84 <u>55</u> N-wood 9" purple Three Fruits PCE bowl   |
| 38 <u>50</u> celeste blue 10" bud vase   | 85 <u>20</u> N-wood 8" mari. Three Fruits ruffled bowl. Sharp points.                         |
| 39 <u>100</u> teal 7" Smooth Panels vase   | 86 <u>475</u> Fenton emerald green Horse Head medallion ruffled bowl. Outstanding.            |
| 40 <u>25</u> mari. 8" Smooth Panels vase w/Iron Cross  | 87 <u>110</u> Fenton blue Horse Head Medallion nut bowl                                       |
| 41 <u>450</u> Imp. white Stretch 15" funeral vase w/Iron Cross                                       | 88 <u>75</u> Fenton 7" mari. Horse Head Medallion plate                                       |
| 42 <u>75</u> 3-Imp. Grape elec. purple wines   | 89 <u>45</u> N-wood purple G & C powder jar   |
| 43 <u>130</u> 3-purple Diamond & Sunburst wines ✓  | 90 <u>30</u> N-wood mari. G & C powder jar-lid not correct Lid is Dugan Vintage               |
| 44 <u>20</u> Imp. Grape elec. purple Goblet  | 91 <u>900</u> Fenton blue Butterfly & Berry hat pin holder Very Rare.                         |
| 45 <u>35</u> Imp. purple Grape water carafe  |   |
| 46 <u>180</u> Imp. Grape elec. purple wine decanter  |   |
| 47 <u>10</u> mari. 9" etched vase  |   |



92 <sup>650</sup> Fenton mari. Butter & Berry hat pin holder Rare.

93 <sup>35</sup> Fenton green Vintage ferner-excellent color

94 <sup>25</sup> Fenton blue Vintage ferner

95 <sup>800</sup> Fenton 7" blue 1914 Parkersburg Elks plate

96 <sup>285</sup> Fenton mari. Blueberry pitcher. Bright irid.

97 <sup>350</sup> Fenton green Butterfly & Fern water pitcher

98 <sup>30</sup> Fenton mari. Coin Dot pitcher crimped top *patm etc.*

99 <sup>450</sup> Dugan green Floral & Grape water pitcher

100 <sup>300</sup> Fenton blue Mikado flared compote

101 <sup>85</sup> Fenton mari. Mikado ruffled compote

102 <sup>675</sup> Imp. purple 474 milk pitcher. Rare. Nice color.

103 <sup>375</sup> Imp. elec. purple Chatelaine water pitcher Rare. *pat measurements etc.*

104 <sup>150</sup> Imp. Grape purple water pitcher

105 <sup>240</sup> N-wood 7" elec. green Tree Trunk vase.

106 <sup>335</sup> N-wood purple Large Tornado vase

107 <sup>1000</sup> N-wood light mari. Town Pump

108 <sup>300</sup> N-wood blue Daisy & Drape flared vase

109 <sup>110</sup> N-wood IG Corn vase

110 <sup>220</sup> N-wood white Corn vase

111 <sup>300</sup> N-wood purple Corn vase

112 <sup>160</sup> N-wood 7" IB Thin Rib Vase

113 <sup>200</sup> N-wood purple G & C large covered compote

114 <sup>450</sup> N-wood purple G & C large ruffled compote

115 Rare N-wood renninger blue G & C stippled humidior.

<sup>250</sup> Flaking on inside lid

116 <sup>60</sup> N-wood pastel mari. G & C humidior. One tong broke

117 <sup>125</sup> N-wood mari. G & C cracker jar.

118 <sup>175</sup> N-wood IG G & C cracker jar.

119 <sup>450</sup> N-wood mari. Cherry & Cable 5-pc water set

120 <sup>100</sup> N-wood mari. Cherry & Cable 7-pc. berry set

121 <sup>500</sup> N-wood pastel AO Rose Show bowl. SUPER!

122 <sup>375</sup> N-wood purple Rose Show bowl. Very nice!

123 <sup>85</sup> Imp. Grape white chop plate. Rare! *14012*

124 <sup>275</sup> Imp. Grape purple chop plate.

125 <sup>20</sup> Imp. Grape ginger ale chop plate.

126 <sup>90</sup> Imp. Grape amber chop plate.

127 <sup>170</sup> Imp. green Hattie chop plate

128 <sup>140</sup> N-wood 9" purple Wishbone PCE bowl

129 <sup>600</sup> Fenton purple Paneled Dandelion tankard

130 <sup>160</sup> Fenton 10" elec. blue Chrysanthemum ftd. bowl

131 <sup>140</sup> Fenton 10" blue Stag & Holly footed bowl

132 <sup>70</sup> Fenton 16" blue Rustic mid-size vase

133 <sup>1750</sup> Fenton purple G & C handled basket made from low fruit bowl. Very rare!!!

134 <sup>650</sup> Fenton blue Star Flower water pitcher. Great color *\* pat meas. etc.*

135 <sup>75</sup> Fenton blue Blackberry Block tankard. Rare!

136 <sup>150</sup> Fenton 9" white Little Fishes ICS bowl. May be the only one known!!! Does have a crack :(

137 <sup>130</sup> Fenton 9" mari. Little Fishes ruffled bowl

138 <sup>25</sup> Fenton 9" mari. Three Fruits plate

139 <sup>850</sup> Fenton 7" mari. Lotus & Thistle "bent back" plate. Edge of plate rests on table. Cool piece.

140 <sup>10</sup> Fenton light mari. 6" Pinecone plate

141 <sup>20</sup> Fenton mari. Water Lily spooner

142 <sup>200</sup> Australian Magpie 5" black amy. ruffled bowl

143 <sup>50</sup> Australian mari. Butterfly stemmed compote

144 <sup>335</sup> Australian 9" mari. Kookaburra ruffled bowl

145 <sup>210</sup> Fenton Kittens cereal bowl-dark pumpkin mari.

146 <sup>80</sup> Fenton Kittens cereal bowl-mari.

147 <sup>220</sup> Fenton Kittens cereal bowl-blue

148 <sup>80</sup> Fenton Kittens cereal bowl-mari.

149 <sup>220</sup> Fenton 2- Kittens 5" plate-powder blue

150 <sup>90</sup> Fenton Kittens 5" plate-light mari.

151 <sup>85</sup> Fenton Kittens 5" plate-mari.

152 <sup>80</sup> Fenton Kittens 5" plate-mari.

153 <sup>60</sup> Fenton Kittens 5" plate-mari.

154 <sup>55</sup> Fenton Kittens 5" plate-mari.

155 <sup>90</sup> Fenton 2-Kittens 5" 2-sided plate-mari.

156 <sup>70</sup> Fenton Kittens 5" 2-sided plate-mari

157 <sup>220</sup> Fenton Kittens 5" 2-sided plate-blue

158 <sup>130</sup> Fenton Kittens 5" banana boat-mari.

159 <sup>110</sup> Fenton Kittens crystal ruffled bowl

160 <sup>350</sup> Fenton Kittens blue ruffled bowl

161 <sup>130</sup> Fenton Kittens mari. ruffled bowl

162 <sup>120</sup> Fenton Kittens cup-blue

163 <sup>275</sup> Fenton Kittens cup-blue

164 <sup>140</sup> Fenton Kittens cup-blue

165 <sup>70</sup> Fenton Kittens cup-mari.

166 <sup>60</sup> Fenton Kittens cup-mari.

167 <sup>60</sup> Fenton Kittens cup-mari.

168 <sup>55</sup> Fenton Kittens pinched 2-sided plate

169 <sup>170</sup> Fenton 2-Kittens blue 4-sided plate

170 <sup>150</sup> Fenton Kittens -mari. 4-sided plate

171 <sup>210</sup> Fenton Kittens toothpick-blue

172 <sup>NS</sup> Fenton Kittens toothpick-blue \*

173 <sup>110</sup> Fenton Kittens octagon toothpick-mari.

174 <sup>60</sup> Fenton Kittens pinched 4-sided toothpick-mari.

175 <sup>100</sup> Fenton 2-Kittens mari. 4-ruffled toothpick

176 <sup>250</sup> Fenton Kittens mari. round toothpick

177 <sup>225</sup> Fenton Kittens mari. vase 3 1/4"-Rare.

178 <sup>375</sup> Fenton Kittens mari. vase 3 1/2" rare

179 <sup>2500</sup> Very Rare mari. Kittens spittoon. Just a few known

180 <sup>5000</sup> Super rare BLUE Kittens spittoon. Fantastic color. Hardly ever offered for sale. Grace loves her Kittens as you know!

**This ends Friday's session. Please stay for dinner from Fairlawn and our annual entertainment w/ the Greenville HS Wavaires. Doors will open at 8am on Saturday morning.**



- 181 <sup>450</sup> Ultra RARE Fenton RED Holly plate. As you know this plate has been talked about for years. When you think of Byron and Grace you ALWAYS think of the "Red" plate that you thought you would NEVER have a chance to buy! Well..... Here it is... Good Luck!
- 182 <sup>900</sup> Fenton 10" RED Little Flowers ruffled bowl. GREAT! \*
- 183 <sup>1500</sup> Fenton 10" RED Vintage ICS bowl... SUPER color
- 184 <sup>300</sup> Fenton 8" RED Peacock and Grape bowl Has odd metallic irid.
- 185 <sup>650</sup> Fenton 8" RED Stag & Holly Ft'd bowl. Nice!
- 186 <sup>1100</sup> Fenton 9" RED RED RED Dragon & Lotus 8 ruffled bowl. WOW!
- 187 <sup>325</sup> Fenton RED Holly ruffled bowl. Almost a reverse amberina, Different
- 188 <sup>50</sup> 8" RED Wide panel plate- stretch
- 189 <sup>450</sup> Fenton RED 8" Butterfly & Berry vase. Nice
- 190 <sup>525</sup> Fenton 9" RED Flute vase
- 191 <sup>325</sup> Fenton 10" RED Thin Rib vase
- 192 <sup>90</sup> Fenton 5" RED OE Hat
- 193 <sup>110</sup> Fenton RED 5" JIP OE Hat
- 194 <sup>825</sup> Fenton RED Holly JIP hat. Nice
- 195 <sup>175</sup> Fenton RED Orange Tree mug
- 196 <sup>725</sup> Fenton RED 7" Coin Dot bowl. RARE
- 197 <sup>250</sup> Fenton RED 7" G&C Bowl. Nice <sup>4corn</sup>
- 198 EXTREMELY RARE WHITE Butterfly & Berry water pitcher. As far as we know this is the only known example and it is BEAUTIFUL! One of Grace's pride & joys!
- 199 <sup>75</sup> Fenton 6" white Blackberry spray OE hat
- 200 <sup>550</sup> Nwood White Raspberry water pitcher, Scarce
- 201 <sup>65</sup> Dugan 7" white Fishscales & beads ruffled bowl
- 202 <sup>50</sup> Dugan 6" white Pool of Pearls plate
- 203 <sup>60</sup> Dugan 8" white Apple Blossom twigs ICS bowl
- 204 <sup>110</sup> Dugan 10" White Persian Garden ICS bowl Super color
- 205 <sup>325</sup> Nwood white Peach complete table set with gold trim. Nice & Very Scarce
- 206 <sup>700</sup> Nwood white Peach 5 pc water set w/ gold trim. Frosty
- 207 <sup>180</sup> Nwood White Peach 7pc berry set w/ gold trim. RARE
- 208 <sup>3400</sup> VERY RARE Nwood WHITE Peacock at Fountain 8 pc punch set with a ROUND top. Never seen this on a white one before and maybe just a couple known in all colors. Really shows off the pattern. BUY IT!
- 209 <sup>1400</sup> Nwood white Dandelion 5pc water set. Scarce
- 210 <sup>150</sup> Nwood mari Dandelion tankard
- 211 <sup>45</sup> 2 mari Dandelion tumblers
- 212 Nwood "dirty Lavender"/purple Dandelion tankard. really odd color, handle is purple
- 213 <sup>300</sup> Nwood purple Oriental Poppy Tankard. Nice
- 214 <sup>35</sup> 2 purple Oriental Poppy tumblers
- 215 <sup>280</sup> Nwood mari Oriental Poppy Tankard. Nice
- 216 <sup>35</sup> 2 mari Oriental Poppy tumblers
- 217 <sup>190</sup> 2 Dugan 4" purple Lattice & Points squatty vases. Nice
- 218 <sup>40</sup> Mari Daisy Cut "Tea" bell.
- 219 <sup>50</sup> Mari miniature dresser lamp shade <sup>32</sup>
- 220 <sup>180</sup> Imp purple miniature Scroll Embossed compote
- 221 <sup>130</sup> Mari stemmed toothpick holder <sup>1,100</sup> <sup>Carl</sup>

- 222 <sup>145</sup> ~~450~~ Nwood mari G&C shot glass. Nice <sup>✓ 125-150</sup>
- 223 <sup>10</sup> 2 mari stretch shot glasses
- 224 <sup>20</sup> 4 lt mari nut cups. 1 money <sup>cash</sup>
- 225 <sup>55</sup> 2 6" green art glass twisted bud vases <sup>75</sup>
- 226 <sup>525</sup> Tiffany cordial w/ cut back stem. Nice!
- 227 <sup>35</sup> Mari novelty barrel <sup>225</sup>
- 228 <sup>150</sup> Smoke Corn novelty bottle <sup>✓</sup>
- 229 <sup>15</sup> Imp Mari 5" Morning Glory vase
- 230 <sup>110</sup> Imp mari Thumbprint and Ovals vase. Nice
- 231 <sup>55</sup> Camb. Mini Buzz saw cruet. crystal stopper
- 232 <sup>800</sup> Nwood elec purple G&C perfume bottle. Super!
- 233 <sup>50</sup> Nwood purple G&C Butterdish
- 234 <sup>135</sup> Nwood purple G&C covered compote
- 235 <sup>40</sup> Nwood 8" Purple G&C ruffled bowl
- 236 <sup>65</sup> Nwood 8" purple G&C PCE bowl
- 237 <sup>1400</sup> RARE Nwood 9" SAPPHIRE G&C stippled plate. Fantastic color!
- 238 <sup>300</sup> Nwood 9" blue G&C stippled plate. Nice color
- 239 <sup>100</sup> Nwood green 9" G&C plate.
- 240 <sup>175</sup> Nwood green G&C hatpin holder
- 241 <sup>180</sup> Nwood purple G&C hatpin holder
- 242 <sup>275</sup> Nwood elec purple G&C Banana Boat.
- 243 <sup>65</sup> Nwood mari G&C Banana Boat.
- 244 <sup>425</sup> Nwood Ice green G&C Banana Boat. RARE
- 245 <sup>500</sup> Nwood IB G&C centerpiece bowl w/ point in. RARE
- 246 <sup>125</sup> Nwood mari G&C centerpiece bowl w/points in
- 247 Nwood green G&C centerpiece bowl w/ points up scarce color
- 248 <sup>185</sup> <sup>110</sup> Nwood purple G&C centerpiece bowl w/ points up Nice
- 249 Nwood IB G&C low fruit bowl. NICE LOTS of pastel color!
- 250 <sup>575</sup> <sup>40</sup> Nwood 8" purple G&C ruffled bowl
- 251 <sup>90</sup> Fenton 9" blue Dragon & Lotus bowl
- 252 <sup>40</sup> Nwood 9" purple 3 fruits bowl <sup>PCE</sup>
- 253 <sup>50</sup> Fenton 8" blue Holly ruffled bowl
- 254 <sup>120</sup> Fenton 8" GREEN Orange Tree ICS bowl
- 255 <sup>30</sup> Fenton 9" lt mari Orange Tree plate
- 256 <sup>225</sup> SUPER Fenton 6" elec green Pinecone plate WOW! <sup>Pastel</sup>
- 257 <sup>800</sup> Dugan purple Heavy Iris tankard. Pretty
- 258 <sup>260</sup> West 9" Blue opal Corinth JIP vase
- 259 <sup>35</sup> Fenton mari Int. Swirl tankard
- 260 <sup>275</sup> Imp elec purple Diamond Lace 5pc water set
- 261 <sup>200</sup> Imp mari Poppy Show vase. Scarce
- 262 RARE GREEN 474 punch bowl and base. Base is emerald!
- 263 <sup>350</sup> <sup>140</sup> 2 emerald green 474 punch cups.
- 264 <sup>25</sup> 4 dark green 474 punch cups
- 265 Stunning elec purple Broken Arches 6 pc punch set HOT!!
- 266 <sup>800</sup> <sup>500</sup> RARE Imp ELEC PURPLE Flute 5 pc water set, NICE!
- 267 <sup>10</sup> Miniature mari rosebowl
- 268 <sup>20</sup> 6" mari Canoe
- 269 <sup>10</sup> 7" mari Canoe shaped pickle dish



- 270 <sup>40</sup> Mari flash Dog candy container
- 271 <sup>25</sup> Mari OE hat - millers furniture
- 272 <sup>25</sup> Mari OE hat- Feldman
- 273 <sup>39</sup> 1968 "Town Pump" porcelain plate *100 + per bowl*
- 274 <sup>5</sup> 2 mari flash items
- 275 <sup>115</sup> Mari mini oil lamp ✓
- 276 <sup>25</sup> Mari mini oil lamp ✓
- 277 <sup>5</sup> 2 Mini basketweave baskets
- 278 <sup>210</sup> Nwood elec blue Poppy Pickle dish
- 279 STUNNING FENTON PURPLE BUTTERFLY & BERRY SPITTOON MADE FROM A BERRY BOWL!  
Pinched so far that the feet are raised and it rests on the collar base. Just a Beautiful piece of glass!
- 11,000
- 280 RARE Fenton mari Lattice & Grape spittoon made from a tumbler. NICE! What a selection of hard to find spittoons!  
1300
- 281 The only 2 known G&C mari spittoons made from the 7" round bowl. They have been together forever. We will offer choice with the high bidder having the opportunity of taking both.  
1300 x 2
- 282 RARE dark mari G&C spittoon made from powder jar bottom. Nice dark color!! *Hamlet*
- 5500
- 283 <sup>100</sup> RARE mari Waterlily & cattails 4" vase *Hamlet 136*
- 284 RARE Millersburg GREEN Hobnail Spittoon. Just a few known!  
2300
- 285 <sup>525</sup> Millersburg purple Hobnail spittoon.
- 286 RARE Fenton mari Smooth Rays Spittoon made from bowl  
125
- 287 RARE Fenton mari 7" Waterlily & Cattails Spittoon made from a bowl. Only one known ✓
- 150
- 288 RARE Fenton green Smooth Rays 4" ruffled top spittoon *at art*  
235
- 289 <sup>80</sup> Mari Wide Panel 6" Spittoon. Scarce
- 290 <sup>10</sup> Mari flash 4" rosebowl w/ spittoon shape top
- 291 <sup>70</sup> LARGE mari Ball Shaped spittoon ✓
- 292 <sup>450</sup> Mari Creol? stemmed rosebowl. RARE ✓
- 293 <sup>350</sup> Nwood 10" IB Tree Trunk vase. Scarce
- 294 <sup>225</sup> Nwood 10" IG Tree Trunk vase. Scarce
- 295 <sup>205</sup> Nwood 10" white Tree Trunk vase. Scarce
- 296 Fenton Red Peacock vase. Nice. NOT DRILLED for lamp base  
300
- 297 <sup>25</sup> Fenton camphor Peacock vase
- 298 <sup>180</sup> Purple Hatpin- see picture *Bobo Smi*
- 299 <sup>75</sup> Purple Dragon flies hatpin
- 300 <sup>65</sup> Purple "Sphere" hatpin
- 301 <sup>45</sup> Purple Top O' the Morning hatpin
- 302 <sup>45</sup> Purple Big Butterfly hatpin
- 303 <sup>50</sup> Purple beaded hatpin - See picture
- 304 <sup>30</sup> Purple beaded hatpin - See picture
- 305 <sup>35</sup> Purple beaded hatpin - See picture
- 306 <sup>35</sup> Purple beaded hatpin - See picture
- 307 <sup>50</sup> Purple beaded hatpin - See picture
- 308 <sup>50</sup> Purple beaded hatpin - See picture
- 309 <sup>20</sup> Purple "cherry" hatpin made from shard

- 310 <sup>10</sup> 2 beaded broaches
- 311 <sup>75</sup> 2 beaded broaches
- 312 <sup>120</sup> Purple "Bat" hatpin- not on stick
- 313 <sup>25</sup> 2 hatpins not on sticks
- 314 <sup>5</sup> 2 handmade beaded broaches
- 315 <sup>25</sup> Jeweled hair comb
- 316 <sup>40</sup> Victorian Beaded Purse
- 317 <sup>60</sup> Victorian Beaded Purse
- 318 <sup>35</sup> Victorian Beaded Purse
- 319 Nwood 19.5" elec blue Tree Trunk Funeral vase  
4200 Blasting color!! HOT LOT!
- 320 Nwood 17.5" purple Tree Trunk funeral vase. Very nice for this  
1700
- 321 Nwood 19" elec blue Tree Trunk funeral vase. Another beauty. does has chip on bottom of base. I don't think you'll mind much though.  
2100
- 322 Nwood emerald Green 19" Tree Trunk Funeral vase. WOW is all that I can say. FYI> This is Stacy's. The only item in the Auction not Grace's  
3500
- 323 Nwood elec purple 14" Tree Trunk elephant foot vase. Killer color! Has a "no harm" sharp point just to be accurate. Color WAY makes up for that!  
3000
- 324 Fenton 17" purple Rustic Funeral vase. Very Nice lookin' vase!  
1000
- 325 <sup>700</sup> Fenton 19" mari Rustic flared top Funeral vase. Cool
- 326 Fenton 19" GREEN Rustic Funeral vase. Scarce
- 327 <sup>1400</sup> Fenton 19" WHITE Rustic Funeral vase. Very frosty irid. NICE!  
1800
- 328 Fenton 19" GREEN Rustic funeral vase. Another super vase!  
1200
- 329 <sup>350</sup> Fenton 19" mari Rustic funeral vase.
- 330 Nwood 19" green Flute funeral vase.  
170
- 331 <sup>240</sup> Nwood 19.5" green Flute funeral vase
- 332 Imp 17" elec purple Morning Glory funeral vase. Super irid  
500
- 333 <sup>220</sup> Imp 17" mari Morning Glory funeral vase.
- 334 Nwood IB Butterfly Threaded bon bon RARE and pretty.
- 335 Nwood purple Butterfly threaded bon bon
- 336 Nwood blue Butterfly threaded bon bon
- 337 Nwood blue Double Loop sugar bowl
- 338 Nwood mari Double Loop sugar bowl
- 339 Nwood green G&C breakfast cr/sug set
- 340 Nwood purple G&C breakfast cr/sug set
- 341 Nwood purple G&C Cologne bottle
- 342 Nwood purple G&C Sweetmeat
- 343 Nwood purple G&C pin tray
- 344 Nwood purple 5" stemmed berry bowl
- 345 Nwood green G&C candle stick
- 346 Nwood green G&C candle lamp w/shade
- 347 Nwood 9" purple G&C plate
- 348 Nwood IB G&C Dresser tray. Scarce
- 349 Nwood green 5pc G&C water set.
- 350 nwood mari 5pc G&C water set



- 351 Nwood 9" green G&C PCE bowl
- 352 Nwood 8" clambroth G&C ruffled bowl
- 353 Dugan 4.5" elec purple Big Basketweave vase
- 354 Dugan 9" PO Round up low ruffled bowl
- 355 Dugan mari Butterfly & Tulip w/ odd 2 points up. neat shape
- 356 RARE Dugan elec purple Farmyard square ruffled bowl. Outstanding bowl for any chicken farmer! Interesting these are "New Hampshire" chickens! Hmmm... Wonder what that could mean?
- 4250
- 357 Dugan PO 5 pc Cherries ICS set.
- 358 180 Dugan PO Stippled Petals basket
- 359 40 Dugan 7" mari Circle Scroll vase
- 360 120 Dugan 12' elec purple Lined Lattice ft'd vase. Chip on edge
- 361 60 Dugan 3.5" purple Twigs vase. Nice
- 362 575 Dugan 3.5" purple Twigs vase. Nice
- 363 60 Dugan 8" purple Pony bowl
- 364 40 Dugan elec purple Grape Delight rosebowl
- 365 20 Dugan mari Grape Delight nut bowl
- 366 208 Dugan mari Many Fruits 12 pc punch set
- 367 425 Fenton purple Wreath of Roses 8pc punch set
- 368 70 U.S. Glass Jenkins Cut Flowers cylinder vase
- 369 Mburg dark mari Rose Columns vase. This is the vase sold in Aug. We did announce the flaw in the side but then we found a hairline in the base.
- 1400
- 370 Nwood purple G&C 8pc master punch set. Very nice color!
- 1500
- 371 10 Fenton mari Miniature Blackberry compote
- 372 55 Golden Cupid 5" round bowl
- 373 15 Fenton smooth rays stemmed compote vase
- 374 100 Fenton mari Orange Tree hatpin holder
- 375 45 Fenton blue stippled rays stemmed compote
- 376 95 Camb mari inv Strawberry powder jar
- 377 475 Imp purple Colonial Lady vase. Nice color Scarce
- 378 95 Imp mari Thumbprint and Ovals vase
- 379 20 Fenton 6" mari Persian Medallion plate
- 380 25 Mari cream and sugar set
- 381 45 Imp elec purple grape goblet
- 382 45 Dugan purple Stork & Rushes mug
- 383 25 Mari Little Bo Peep mug
- 384 RARE BLUE Butterfly Ornament. Very hard to find color!
- 1900
- 385 RARE Mari Butterfly Ornament.
- 1500
- 386 850 RARE Mari Butterfly Ornament.
- 387 2000 RARE Pumpkin Mari Butterfly Ornament.
- 388 Very RARE Fenton 7" blue Indiana State House plate. Just a couple known
- 10,000
- 389 Super Fenton 7" blue 1914 Parkersburg Elks plate. Tons of electric hilights!
- 390 Fenton blue Orange Tree loving cup. Nice one!
- 391 Fenton mari Orange Tree loving cup.
- 392 Fenton 6" blue Lions round bowl
- 393 15 Imp. mari Wide Panel 6' Rosebowl
- 394 95 Imp 9" smoke smooth rays plate
- 395 10 Imp mari Wide Panel 10" basket
- 396 45 Imp 9" mari Acanthus plate
- 397 30 Imp grape clambroth handled basket
- 398 35 Imp grape smoke handled basket
- 399 10 Imp grape mari handled basket
- 400 Nwood purple Peacock at Fountain complete table set. Nice
- 350
- 401 Nwood 9" IG Embroidered Mums plate. Very hard to find plate, Nice
- 600
- 402 Nwood 9" purple Hearts & Flowers plate
- 375
- 403 Nwood 8.5" IB Hearts & Flowers PCE bowl
- 325
- 404 Nwood 9" purple Rainbow plate
- 30
- 405 Nwood 9" purple Rainbow ruffled bowl
- 30
- 406 85 Nwood 9" mari Jester vase, Scarce
- 407 RARE Nwood Ice blue opal Good Luck ruffled bowl. Great color!
- 1000
- 408 165 Nwood purple Good Luck ruffled bowl
- 409 450 Nwood green Singing Birds 5 pc water set
- 410 650 Nwood purple Wishbone 5pc water set Very nice set!
- 411 600 Nwood purple Peacock at Urn chop plate, good color!
- 412 75 Nwood green Wide Panel table set, chip on butter
- 413 40 Nwood purple Acorn Burr spooner
- 414 35 Nwood purple Acorn Burr creamer
- 415 760 Imp mari Zipper Loop chamber lamp
- 375-400
- 416 175 Imp mari Zipper Loop large oil lamp
- 417 175 Imp mari Zipper Loop large oil lamp
- 418 375 Imp mari Zipper Loop large oil lamp
- 419 285 Imp mari Zipper Loop large oil lamp
- 420 Mari Curved Star 3 Pc epergne set. Scarce
- 421 3 pc imp grape in green- see photo
- 422 2 purple broken arches punch cups
- 423 Imp Mari Cake plate
- 424 Nwood 8" mari Drapery vase
- 425 Nwood green JIP ribbed vase
- 426 Nwood 6" purple Dreibus Parfait 2 sided plate
- 427 Nwood 6" purple Fern Brands HG plate
- 428 Green Wild Rose syrup pitcher
- 429 Mari stretch 7" rosebowl
- 430 RARE Fenton purple G&C tri-cornered fruit bowl. Really cool Whimsy item
- 431 IG Stretch Diving Dolphin covered candy
- 432 Mari Open Rose plate
- 433 Gingerale 7" Morning Glory vase
- 434 Mari Art glass 3 lily epergne in silver plate frame
- 435 Mari Robins 5pc water set
- 436 Mari May basket
- 437 Mari Crab claw 5pc water set
- 438 Mari Octagon 3 pc water set
- 439 Green Imp Grape 9pc wine set
- 440 Mari Imp Grape 7pc wine set
- 441 Mari Imp Grape 7pc wine set
- 442 Bellaire Good Will Tour bowl



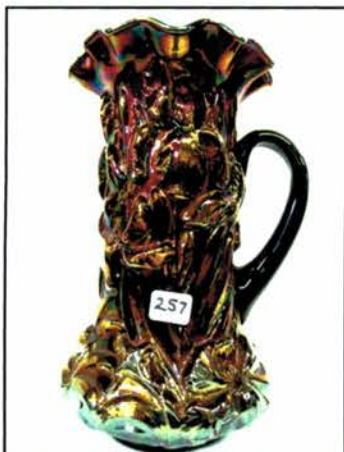
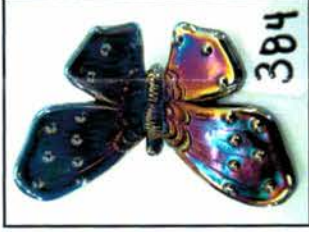
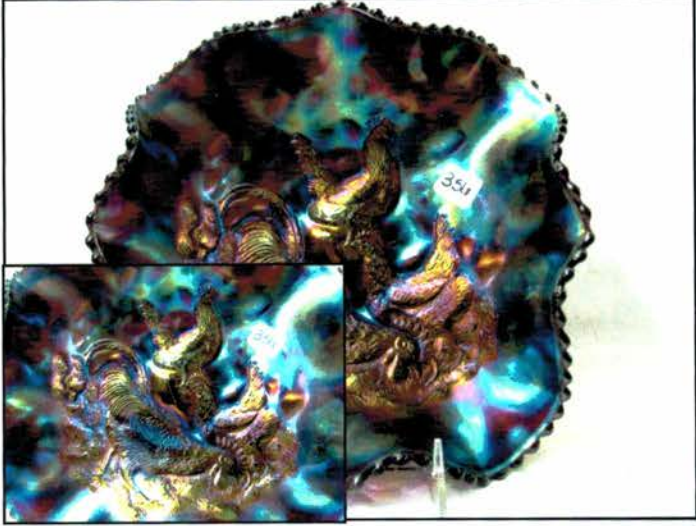
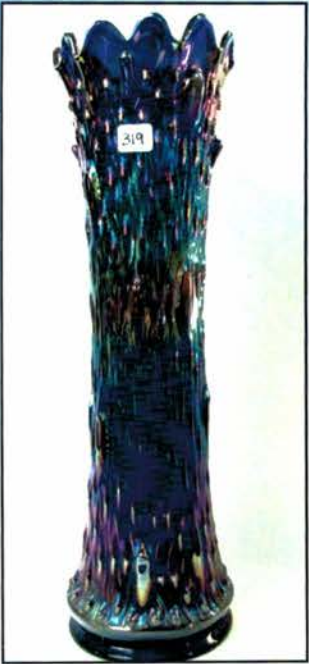
443 mari chimney  
 444 Mari biscuit jar  
 445 Mari European vase  
 446 Mari Robins mug  
 447 Mari Vintage mug  
 448 2 mari Chesterfield mugs  
 449 mari art glass handled mug  
 450 3 mari goblets  
 451 strands of beads  
 452 Bucket of Beads  
 453 4 mari creamers  
 454 Holly bell made from compote  
 455 Vintage bell made from wine  
 456 Nwood WHITE Wide Panel Epergne. RARE and very frosty irid! Does have a MANUFACTURING separation on the base.

1001<sup>30</sup> Rambler Rose tumbler, marigold *marigold*  
 1002<sup>35</sup> Rambler Rose tumbler, purple  
 1003<sup>50</sup> Graceful tumbler, blue *350*  
 1004<sup>55</sup> Rare Imp. Open Rose painted tumbler, Mari. chip on base  
 1005<sup>10</sup> Open Rose tumbler-marigold  
 1006<sup>50</sup> 2-red Stretch tumblers w/cut tops  
 1007<sup>20</sup> mari. Scales tumbler  
 1008<sup>40</sup> mari. Blueberry tumbler  
 1009<sup>40</sup> purple Blackberry Block tumbler  
 1010<sup>35</sup> Imp. Grape tumbler, green  
 1011<sup>50</sup> Imp. Grape tumbler, mari.  
 1012<sup>50</sup> Imp. Grape tumbler, electric purple  
 1013<sup>35</sup> Imp. Grape tumbler, electric purple  
 1014<sup>35</sup> Imp. Grape tumbler, electric purple  
 1015<sup>50</sup> Fentonia tumbler, blue ~~85~~  
 1016<sup>25</sup> purple Milady tumbler. ugly but RARE  
 1017<sup>85</sup> dark mari. Milady tumbler. Super!  
 1018<sup>35</sup> dark mari. Ten Mums tumbler  
 1019<sup>70</sup> Rare mari. Lily of the Valley tumbler  
 1020<sup>55</sup> elec. purple Windmill tumbler  
 1021<sup>40</sup> mari. Leaf Tiers tumbler  
 1022<sup>30</sup> green Imp. Grape tumbler  
 1023<sup>25</sup> purple Butterfly & Fern tumbler  
 1024<sup>30</sup> green Butterfly & Fern tumbler w/collar base  
 1025<sup>30</sup> green Butterfly & Fern tumbler w/collar base  
 1026<sup>80</sup> green Butterfly & Fern tumbler w/ground base  
 1027<sup>90</sup> Inverted Strawberry tumbler, purple  
 1028<sup>10</sup> Maple Leaf tumbler, purple  
 1029<sup>30</sup> Dandelion tumbler, green  
 1030<sup>30</sup> Dandelion tumbler, dark mari.  
 1031<sup>75</sup> Dandelion tumbler, elec. purple *50 20*  
 1032<sup>90</sup> Dandelion tumbler, elec. purple  
 1033<sup>20</sup> mari. Butterfly & Fern tumbler

1034<sup>45</sup> Fluffy Peacock, dark mari.  
 1035<sup>25</sup> Field Flower tumbler, green *70*  
 1036<sup>25</sup> Field Flower tumbler, dark mari.  
 1037<sup>35</sup> Paneled Dandelion tumbler, purple *35*  
 1038<sup>100</sup> Acorn Burr tumbler, purple  
 1039<sup>35</sup> Raspberry tumbler, elec. marigold  
 1040<sup>20</sup> Floral & Grape tumbler, green  
 1041<sup>20</sup> Floral & Grape tumbler, purple  
 1042<sup>45</sup> Harvest Flower tumbler, mari.  
 1043<sup>20</sup> Fashion tumbler, mari.  
 1044<sup>60</sup> Green Wishbone tumbler  
 1045<sup>25</sup> purple Grape Arbor tumbler  
 1046<sup>15</sup> mari. Grape Arbor tumbler  
 1047<sup>15</sup> white Grape Arbor tumbler w/epoxy on base  
 1048<sup>15</sup> purple Grape & Cable tumbler  
 1049<sup>40</sup> elec. blue Peach tumbler  
 1050<sup>15</sup> mari. Coin Dot tumbler  
 1051<sup>30</sup> purple Heavy Iris tumbler  
 1052<sup>15</sup> mari. Daisy & Diamond Cut tumbler  
 1053<sup>5</sup> mari. hand enameled tumbler  
 1054<sup>50</sup> green Windmill tumbler  
 1055<sup>10</sup> Fenton pale mari. Water Lily tumbler  
 1056<sup>25</sup> 2-mari. Butterfly & Berry tumblers  
 1057<sup>30</sup> N-wood elec. blue Peacock at Fountain tumbler  
 1058<sup>35</sup> Dugan blue Peacock at Fountain tumbler  
 1059<sup>30</sup> mari. Springtime tumbler  
 1060<sup>50</sup> mari. Springtime tumbler  
 1061<sup>55</sup> dark mari. Orange Tree Orchard tumbler  
 1062<sup>20</sup> dark mari. Orange Tree Orchard tumbler  
 1063<sup>25</sup> 2-mari. 474 tumblers  
 1064<sup>60</sup> Rare white Orange Tree footed tumbler  
 1065<sup>15</sup> pumpkin mari. Bouquet tumbler. Large chip on base  
 1066<sup>40</sup> mari. Ranger tumbler  
 1067<sup>30</sup> mari. File tumbler  
 1068<sup>40</sup> dark mari. Wreathed Cherry tumbler  
 1069<sup>20</sup> mari. Wreathed Cherry tumbler  
 1070<sup>35</sup> 2-mari G & C stippled punch cups  
 1071<sup>10</sup> green Flute punch cup  
 1072<sup>5</sup> purple Stork & Rushes punch cup  
 1073<sup>30</sup> green Acorn Burr punch cup-odd shade  
 1074<sup>35</sup> purple S-Repeat punch cup made into creamer  
 1075<sup>30</sup> mari. Orange Tree wine-Port Clyde Maine  
 1076<sup>25</sup> mari. Wine & Roses wine  
 1077<sup>12</sup> mari. Sailboats wine  
 1078<sup>5</sup> mari. Diamond & Sunburst wine  
 1079<sup>10</sup> 2-purple Vintage wines  
 1080<sup>10</sup> 2-crystal Star & File cordials  
 1080a<sup>10</sup> Nwood white Dandelion tumbler

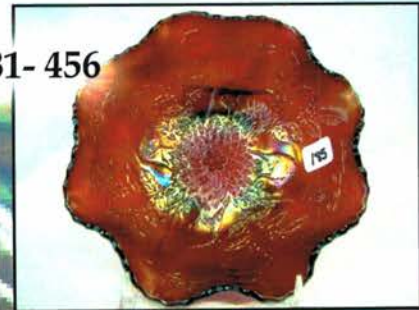


Saturday November 12th Carnival Glass Lots 181- 456





Saturday November 12th Carnival Glass Lots 181- 456

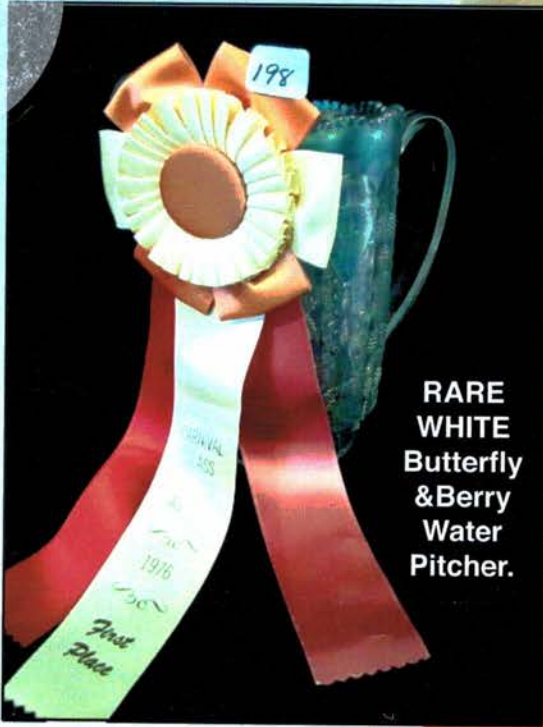




Jim Wroda Auction Service  
5239 ST RT 49 S Greenville Ohio 45331  
[www.jimwrodauction.com](http://www.jimwrodauction.com)

PRESORTED  
FIRST CLASS MAIL  
U.S. POSTAGE  
**PAID**  
CELINA, OH  
PERMIT NO. 99

FIRST CLASS POSTAGE PAID



RARE  
WHITE  
Butterfly  
& Berry  
Water  
Pitcher.

8-13\*\*\*\*\*AUTO\*\*MIXED AADC 434  
LEE MARKLEY  
PO BOX 306  
502 N BROADWAY ST  
MENTONE IN 46539-9531



Volume 11, Series 2011

## 2 Day Carnival & Fenton Glass Auction Grace & The Late Byron Rinehart Collections 2011 Customer Appreciation Weekend Auction

Friday November 11th & Saturday Nov 12th 2011

Greenville Auction Center at 5239 ST RT 49S Greenville, Ohio 45331.

Order of Auction: Doors open at 8:30 am on Friday. Then, Friday at 10:00 am will be the Fenton Collection. We will then start at 1:30 pm with the Carnival Glass lots 1-180. At 6:00 pm we will have dinner with the Fairlawn Steakhouse serving you & entertainment from the Greenville High School Wavaires. Saturday the doors will open at 7:30 AM with the tumbler auction starting at 8:30 and the Carnival Glass auction will begin at 9:45 until finished. Lunch will be served on Saturday.

\*\*\*PLEASE SEE WEBSITE FOR COMPLETE LISTING FOR FRIDAYS FENTON AUCTION\*\*\*

PLEASE CHECK OUT THE "NEW" AUCTION FLEX ABSENTEE BID PLATFORM! IT'S EASY AND FAST!

Terms of the auction: We do accept absentee bids, Phone bids (\$500.00 minimum bid) and left bids. All bids will be bid competitively against the audience. ALL absentee bids must be to us no later than 2 days prior to the auction, otherwise we will not guarantee them being entered into our system. All SUCCESSFUL absentee, phone and left bids are subject to a \$7.00 convenience fee, plus postage and insurance. We will contact you within a couple of days after the auction. Please do not call us to see if you won an item. Laurie/Jaci will call you if your bid was successful. Extra calls coming in just slows us down on contacting people. If damage is found during the auction or preview we will cancel your bid. If manufacture problems bother you such as air bubbles, pulled points, soda ash, tool marks, or any other manufacturing flaw, please be specific in our mail bids or email bids. If there is a manufacture flaw on an item that we feel is truly distracting, we have noted that in the listing already. Auction Company has the right NOT to execute an absentee bid for any reason. ALL bids are due 2 days prior to the auction. ALL items must be paid for within 7 business days after notification.

PLEASE NOTE: We will get your items to you as fast as possible but, please allow 10 to 14 business days for your items to be shipped.

Terms & Conditions: Cash, Travelers checks, business or personal checks w/I.D. Visa/ MC & Discover with a 3% clerking fee

### Jim Wroda Auction Services

Jim Wroda - Auctioneer

Call us: 937.548.7835

email us: [office@jimwrodauction.com](mailto:office@jimwrodauction.com)

Hotels: Holiday Inn Express - Greenville 937-548-1328 (special rate if you mention "Jim Wroda Auctions")

Other hotels: Greenville Inn 937-548-3613 (ask for special rate and they allow small pets!): Comfort Inn - 937-316-5252

