



Lot #225

BURNS

AUCTION SERVICE

35th MID-ATLANTIC CARNIVAL GLASS JAMBOREE

Oct. 20, 21, 22, 2011

**AUCTION: SATURDAY,
OCTOBER 22nd at 10:30 A.M.**

Preview:

Friday evening, October 21

Saturday, October 22 at 8:00 a.m.



Lot #87

RAMADA PLAZA HOTEL

1718 Underpass Way

HAGERSTOWN, MD

(301) 797-2500

Exit 5A off I-81. See you then, Tom!



Lot #215



Lot #88

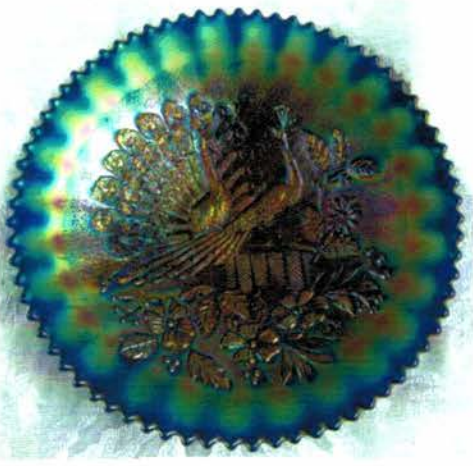


Lot #220

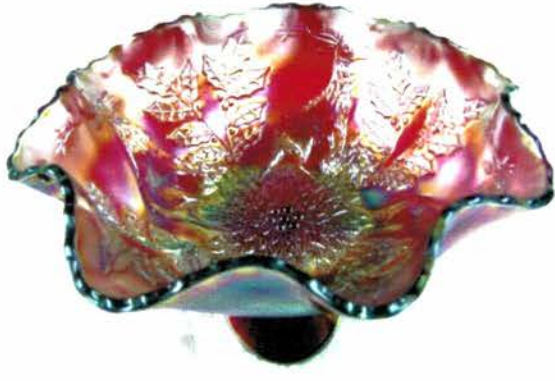
1. No deposit required. Bidders will take full responsibility to honor any and all bids we execute for them. Payment in full plus postage and handling required after notification and before we ship any item to them.
2. Items are bid on in perfect condition with average or above average iridescence OR as listed in the brochure.
PEOPLE PRESENT AT AUCTION ARE RESPONSIBLE FOR FINDING ANY PINHEADS, WEAR, SPOTTINESS, MANUFACTURERS DEFECTS OR ANY OTHER MINOR FLAWS, ETC.
3. Successful bidders will be notified by collect call from the auctioneer (so be sure include phone number).
4. Phone inquires about the glass or any other questions are welcome.
5. For Phone Bids or Questions Regarding Auction Glass, Call Tom Burns (407) 592-6552.
6. If you have some other person at the auction bidding for you, they must pay for the item before taking it.
7. Any terms or conditions given the day of the auction will supersede previously published information.
8. For any questions regarding Jamboree or hotel, please call Bill or Sharon Mizell at (301) 384-8952.

- | | | | |
|---------|---|---------|--|
| ___ 1. | Pr. 7" Tall Imperial 6 Paneled Candlesticks – Mari. | ___ 21. | N (Dugan) G & C ftd. Stippled, Banded Banana Boat – Dk. Mari. (super example with great irid.) |
| ___ 2. | Pr. 8 ½" Tall N'wood 6 Paneled Candlesticks – Celeste Blue (a nice dark base color) | ___ 22. | N (Dugan) G & C ftd. Stippled, Banded Banana Boat – Lt. Irid./ Crystal Grey (very odd item; probably not too many of these around) |
| ___ 3. | Pr. 8 ½" Tall N'wood 6 Paneled Candlesticks – Russet Green | ___ 23. | N G & C FTD. BANANA BOAT – ICE GREEN (VERY ATTRACTIVE EXAMPLE OF THIS RARE COLOR) |
| ___ 4. | Pr. 10" Tall Fenton Large Florentine Candlesticks – Grecian Gold (nice pair) | ___ 24. | N G & C FTD. BANANA BOAT – ICE BLUE (VERY ATTRACTIVE EXAMPLE OF THIS VERY SCARCE ITEM) |
| ___ 5. | Pair Cambridge Inverted Strawberry Candlesticks – Green (rare pair; both have chips around the base) | ___ 25. | N G & C ftd. Banana Boat – Green (really tough base color to find; nice example) |
| ___ 6. | N G & C Candlestick – Green (nice color) | ___ 26. | N G & C ftd. Banana Boat – Cobalt Blue (rare color to find; really dark with gold highlights) |
| ___ 7. | N G & C Candlestick – Dk. Mari. (very attractive) | ___ 27. | N G & C ftd. Banana Boat – Purp. (one of the better examples you'll find) |
| ___ 8. | N G & C Cologne Bottle and Stopper – Purp. | ___ 28. | N G & C Standard Water Pitcher – Green (very scarce; nice example) |
| ___ 9. | N G & C Cologne Bottle and Stopper – Amyth. (stopper is darker) | ___ 29. | N G & C MASTER BERRY BOWL – ICE GREEN (RARE & VERY UNDERPRICED; GREAT COLOR AND IRID.) |
| ___ 10. | N G & C PERFUME BOTTLE AND STOPPER – PURP. (RARE; DESIRABLE – NICE COLOR AND IRID.) | ___ 30. | N G & C FTD. FERNERY – ICE BLUE (VERY RARE AND VERY DESIRABLE; GREAT COLOR AND IRID.) |
| ___ 11. | N G & C ftd. Hatpin Holder – Purp. (nice satiny finish) | ___ 31. | N G & C FTD. FERNERY – WHITE (EXTREMELY RARE IN THIS COLOR; REALLY NICE IRID.) |
| ___ 12. | N G & C Covered Butter Dish – Purp. (scarce; nice irid.) | ___ 32. | N G & C FTD. FERNERY – DK. MARI. (SUPER EXAMPLE OF A RARE ITEM; GREAT COLOR) |
| ___ 13. | N G & C Large Dresser Tray – Purp. (great color and irid.; has factory edge) | ___ 33. | N G & C ftd. Fernery – Purp. (rare and desirable; nice color and irid.; small dings on bottom Cable) |
| ___ 14. | N G & C Large Dresser Tray – Mari. (nice color and irid.) | ___ 34. | N G & C Covered Sweetmeat Compote – Purp. (scarce; nice color) |
| ___ 15. | N G & C Perfume Bottle and Stopper – Mari. (very scarce and very desirable; the neck is crooked) | ___ 35. | N G & C LARGE FTD. RUFFLED FRUIT BOWL – PURP. (ABSOLUTELY FANTASTIC BLUE HIGHLIGHTS – SUPER ITEM) |
| ___ 16. | N G & C Large Dresser Tray – Green (quite a scarce item in this color) | ___ 36. | N G & C 2 Handled Bon Bon – Elec. Blue (very attractive) |
| ___ 17. | (5) N G & C Shot Glasses – Purp. (very scarce; selling so much for choice) | ___ 37. | 7 ½" N Wild Strawberry Handgrip Plate with Basketweave Ext. – Green (scarce; nice color) |
| ___ 18. | N G & C Whiskey Decanter with no Stopper – Purp. (nice satiny finish – rare) | ___ 38. | 7 ½" N Wild Strawberry Handgrip Plate with Basketweave Ext. – Dk. Mari. (great color and irid.) |
| ___ 19. | N G & C TANKARD WATER PITCHER – DK. MARI. (SUPER EXAMPLE WITH GREAT REDDISH HIGHLIGHTS) | | |
| ___ 20. | N (DUGAN) G & C FTD. STIPPLED, BANDED BANANA BOAT – AQUA/ MARI. (REALLY RARE BASE COLOR WITH ATTRACTIVE IRID.; GO TRY TO FIND ANOTHER) | | |

- ___39. 7 1/2" N Wild Strawberry Handgrip Plate with Basketweave Ext. – Amyth. (scarce; nice color and irid.)
- ___40. **N DRAPERY TRI-CORNERED CANDY DISH – LIME ICE GREEN (SCARCE BASE COLOR; NICE IRID.)**
- ___41. N Drapery Tri-Cornered Candy Dish – Ice Blue (scarce; nice color and irid.)
- ___42. N Drapery Tri-Cornered Candy Dish – White (actually quite scarce; nice irid.)
- ___43. N Drapery Tri-Cornered Candy Dish – Blue (rare base color; satiny finish)
- ___44. N Drapery Tri-Cornered Candy Dish – Purp. (probably the best example I've seen)
- ___45. N Drapery Tri-Cornered Candy Dish – Dk. Mari. (nice color and great irid.)
- ___46. 5" Fenton Sailboats Round Sauce – Green (very scarce item in this color and shape)
- ___47. 6 1/2" Fenton Sailboats 6 Ruffled Sauce – Amyth. (very scarce color and detail)
- ___48. 6" Fenton Sailboats 6 Ruffled Sauce - Blue (scarce; nice detail)
- ___49. 7 1/2" Fenton Two Flowers spatula ftd. Deep Flared Bowl – Blue (nice color)
- ___50. **FENTON TWO FLOWERS BALL FTD. GIANT ROSE BOWL – BLUE (RARE AND A REAL BEAUT; GREAT EXAMPLE)**
- ___51. Fenton Stag and Holly ball ftd. Giant Rose Bowl – Mari. (very scarce, nice color and detail)
- ___52. 10 3/4" Fenton Stag and Holly ball ftd. Ice Cream shaped Bowl – Dk. Mari. (nice color and irid.)
- ___53. 11" Fenton Stag and Holly ball ftd. Ice Cream shaped Bowl – Pink/ Lt. Mari. (sorta different base glass)
- ___54. 9" Fenton Stag and Holly spatula ftd. Flat Plate – Mari. (rare and desirable; great detail and color)
- ___55. **8" FENTON STAG AND HOLLY SPATULA FTD. 8 RUFFLED BOWL – RED (VERY RARE WITH REALLY NICE DARK RED BASE COLOR)**
- ___56. 8" Fenton Stag and Holly spatula ftd. 8 Ruffled Bowl – Green (very scarce; nice color)
- ___57. 7 3/4" Fenton Stag and Holly spatula ftd. I.C. Shaped Bowl – Green (scarce; nice satiny finish)
- ___58. **9 1/2" FENTON STAG AND HOLLY DEEP RUFFLED BALL FTD. BOWL – BLUE/ ELEC. BLUE (SUPER, SUPER ATTRACTIVE EXAMPLE – REALLY NICE)**
- ___59. 10 3/4" Fenton Stag and Holly Large ball ftd. Ice Cream Shaped Bowl – Blue (nice dark iridized example with nice detail)
- ___60. **10 1/2" FENTON STAG AND HOLLY LARGE BALL FTD. ICE CREAM SHAPED BOWL – GREEN (RARE AND VERY DESIRABLE; GREAT BASE COLOR – REALLY ATTRACTIVE)**
- ___61. **10 1/2" FENTON STAG AND HOLLY LG. 8 RUFFLED BALL FTD. BOWL – SMOKE/ MARI. (VERY RARE BASE COLOR; UNUSUAL TAN/BROWN IRID.)**
- ___62. **FENTON PANTHER FTD. RUFFLED MASTER BERRY BOWL – DK. GREEN (VERY RARE BASE COLOR; DARK IRID. AND SATINY FINISH)**
- ___63. Fenton Panther ftd. Ruffled Master Berry Bowl – Blue (another rare item with a dark, satiny finish)
- ___64. **6" FENTON PANTHER FTD. 6 RUFFLED SAUCE – RED/ AMBERINA (RARE AND VERY TOUGH TO FIND; ATTRACTIVE)**
- ___65. **FENTON APPLE TREE BULBOUS HANDLED WATER PITCHER – WHITE (RARE AND DESIRABLE; HAS REALLY NICE IRID. – TOUGH TO FIND)**
- ___66. 9" Fenton Peacock and Grape spatula ftd. Plate – Green (rare and desirable; bright satiny finish)
- ___67. 9" Fenton Peacock and Grape spatula ftd. Plate – Mari. (rare and desirable; nice color and detail)
- ___68. 7 1/2" Fenton Peacock and Grape spatula ftd. 8 Ruffled Bowl – P. Opal. (very scarce color for this item; opal on edge)
- ___69. 7 3/4" Fenton Peacock and Grape spatula ftd. 8 Ruffled Bowl – Amyth. (nice color and irid.)
- ___70. **FENTON ORANGE TREE ORCHARD HANDLED BULBOUS WATER PITCHER – WHITE (VERY RARE AND DESIRABLE; NICE IRID.)**
- ___71. 9" Fenton Peacock and Grape 8 Ruffled Bowl – Amyth. (very attractive)
- ___72. 9" Fenton Peacock and Grape 8 Ruffled Bowl – Blue (nice color and irid.)
- ___73. 9" Fenton Peacock and Grape 8 Ruffled Bowl – Steel Blue (a lighter blue base color)
- ___74. 8 3/4" Fenton Peacock and Grape 8 Ruffled Bowl – Vaseline/ Mari. (very scarce base color; irid. is silvery)
- ___75. **9" FENTON PEACOCK AND GRAPE 8 RUFFLED BOWL – MARI./ MOONSTONE (RARE AND DESIRABLE; GREAT BASE COLOR AND MARI. OVERLAY)**
- ___76. **8 3/4" FENTON PEACOCK AND GRAPE 8 RUFFLED BOWL – P. OPAL (RARE AND DESIRABLE – GREAT IRID. AND OPAL.)**
- ___77. **8 3/4" FENTON PEACOCK AND GRAPE BOWL WITH 3 IN 1 EDGE – LIME GREEN OPAL. (RARE BASE COLOR AND SHAPE; NICE)**
- ___78. 9" N Lattice and Poinsettia ftd. 8 Ruffled Bowl – Purp. (big chip on edge)
- ___79. **8 1/2" N GREEK KEY 8 RUFFLED BOWL WITH RIBBED EXT. – PURP. (ABSOLUTELY OUTSTANDING!!!)**
- ___80. **N GREEK KEY TANKARD WATER PITCHER – GREEN (RARE AND DESIRABLE; PERFECT WITH GREAT COLOR AND IRID.)**



Lot #240



Lot #55



Lot #79



Lot #31



Lot #84

Lot #86



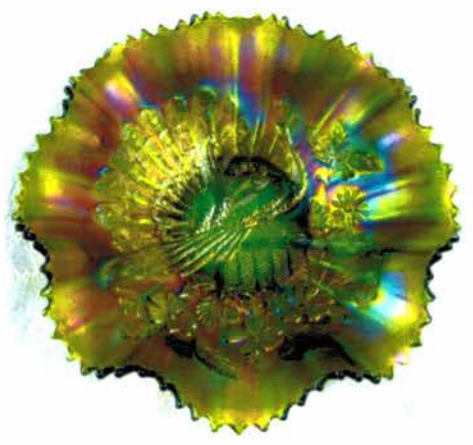
Lot #213



Lot #32



Lot #90



Lot #242



Lot #125



Lot #50



Lot #195



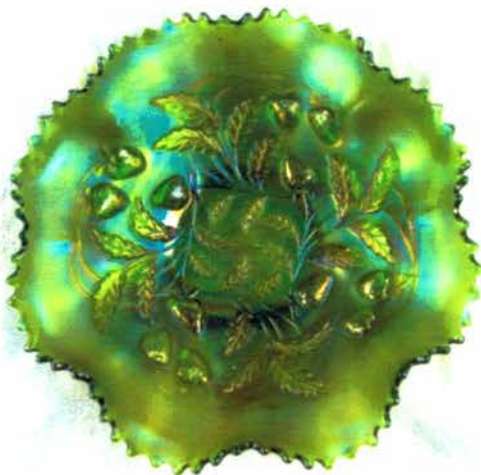
Lot #115



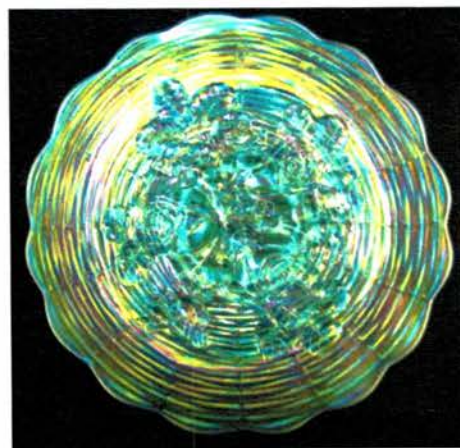
Lot #230



Lot #30



Lot #140



Lot #145



Lot #33

- ___ 81. **13" TALL X 3 5/8" BASE N TREE TRUNK MID SIZE SWUNG VASE WITH PLUNGER BASE – GREEN/ MARI. (VERY RARE VARIATION – ODD GREEN BASE GLASS WITH MARI. OVERLAY)**
- ___ 82. 13 ½" Tall x 4 11/16" base N Tree Trunk mid size Swung Vase – Blue (quite a tough base color to find; great irid.)
- ___ 83. 11 ½" Tall x 4 11/16" base N Tree Trunk mid size Swung Vase – Amyth. (scarce; satiny with silvery finish)
- ___ 84. Dugan Heavy Iris Tumbler – Mari. (sorta radium)
- ___ 85. **DUGAN HEAVY IRIS TANKARD WATER PITCHER WITH WHIMSEY TOP EDGE AND SPOUT – LT. MARI. (I'M NOT REALLY SURE HOW MANY OF THIS VARIATION ARE KNOWN...NOT MANY!!!)**
- ___ 86. Dugan Heavy Iris Tankard Water Pitcher – Lt. Mari. (scarce)
- ___ 87. **DUGAN HEAVY IRIS TANKARD WATER PITCHER – WHITE (VERY RARE AND VERY DESIRABLE; GREAT IRID.)**
- ___ 88. **DUGAN HEAVY IRIS 5 PC. TANKARD WATER SET – PURP. (ABSOLUTELY SUPER SET WITH FANTASTIC IRID.)**
- ___ 89. (2) Dugan Heavy Iris Tumblers – Amyth. (sorta satiny; selling so much each for pair)
- ___ 90. **IMPERIAL HOMESTEAD NUART CHOP PLATE – NOT SIGNED – PURP. (RARE AND ALWAYS DESIRABLE; PERFECT WITH GREAT DETAIL; NICE)**
- ___ 91. I.G. Zipper Loop Kerosene Lamp – Smoke (from the 60's and still tough to find)
- ___ 92. **IMPERIAL GRAPE WINE DECANTER AND STOPPER – SMOKE (RARE BASE COLOR WITH GREAT IRID.)**
- ___ 93. Imperial Windmill Handled Water Pitcher – Mari. (nice color)
- ___ 94. Imperial Windmill Tumbler – Mari.
- ___ 95. **IMPERIAL WINDMILL HANDLED MILK PITCHER – PURP. (SUPER EXAMPLE WITH EXCELLENT IRID. – WOW!)**
- ___ 96. **IMPERIAL WINDMILL OVAL RELISH TRAY – PURP. (SUPER EXAMPLE WITH GREAT COLOR AND IRID.)**
- ___ 97. 9" Imperial Pansy 8 Ruffled Bowl – Purp. (super color and irid.)
- ___ 98. 8 ¾" Imperial Grape 8 Ruffled Bow – Purp. (super color and irid.)
- ___ 99. Imperial Lustre Rose Tumbler – Purp. (super irid.)
- ___ 100. **12 ½" IMPERIAL BEADED BULLSEYE SUNG VASE – PURP. (QUITE A TALL EXAMPLE WITH GREAT IRID.)**
- ___ 101. Imperial Grape Tumbler – Purp. (another super item)
- ___ 102. Imperial Diamond Lace Tumbler – Purp. (great color and irid.)
- ___ 103. Imperial Broken Arches Punch Cup – Purp. (silvery)
- ___ 104. 7 ½" Imperial Windmill Round Flared Bowl – Mari.
- ___ 105. 10 ½" Imperial Acanthus Chop Plate – Mari. (scarce; super irid.)
- ___ 106. 9" Imperial Open Rose Plate – Green (scarce)
- ___ 107. 5 ½" Tall Imperial Morning Glory and Draped Swung Vase – Dk. Mari. (nice color)
- ___ 108. 6 ½" Tall Imperial Miniature Morning Glory Swung Vase – Dk. Mari.
- ___ 109. 6 ½" N Diamond Point Squatty Swung Vase – Green (nice size and shape; 2 points look like a spout)
- ___ 110. **N IVY TOWN PUMP NOVELTY – PURP. (RARE AND DESIRABLE NOVELTY; NICE COLOR)**
- ___ 111. 9 ½" N Diamond Point Swung Vase – Amyth. (satiny; odd tint)
- ___ 112. 6 ¾" N Thin Rib Squatty Swung Vase – Green (with Mari. overlay)
- ___ 113. 10" N Thin Rib Standard Swung Vase – Green (with Mari. overlay)
- ___ 114. N Pansy and Plume ext. 8 Ruffled Bowl – Mari.
- ___ 115. **N PEACOCK AT THE URN 7 PC. ICE CREAM SET – ELEC. BLUE (RARE – VERY DESIRABLE – SUPER IRID. ON MASTER)**
- ___ 116. N Peacock at the Urn 4 pc. Ice Cream Set – Purp. (desirable; satiny – selling separately)
- ___ 117. **N PEACOCK AT THE URN LG. ICE CREAM BOWL – DK. MARI. (RARE AND VERY ATTRACTIVE; SUPER)**
- ___ 118. **N PEACOCK AT THE FOUNTAIN 6 PC. BERRY SET – ICE BLUE (RARE AND VERY DESIRABLE SET; NICE)**
- ___ 119. N Peacock at the Fountain Tumbler – Elec. Blue (great blue color)
- ___ 120. **N SINGING BIRD HANDLED MUG – EMERALD GREEN (ONE OF THE BEST I'VE SEEN!)**
- ___ 121. N Dandelion Tumbler – Green/ N Raspberry Tumbler – Purp. (2 nice examples; selling choice)
- ___ 122. **N NIPPON BOWL WITH P.C.E. AND BASKETWEAVE EXT. – GREEN (ONE OF THE BETTER EXAMPLES I'VE SEEN)**
- ___ 123. N Nippon Bowl with P.C.E. and Ribbed Ext. – Ice Blue (scarce; light irid. – check near base)
- ___ 124. N Good Luck Bowl with P.C.E. and Ribbed Ext. – Mari. (nice light irid.)
- ___ 125. **N GOOD LUCK 8 RUFFLED BOWL WITH RIBBED EXT. – SAPPHIRE (RARE AND VERY DESIRABLE; GREAT BASE COLOR)**
- ___ 126. **N GOOD LUCK STIPPLED 8 RUFFLED BOWL WITH NARROW BASE AND RIBBED EXT. – ELEC. BLUE (GREAT COLOR AND IRID. – VERY ATTRACTIVE)**
- ___ 127. N Good Luck Bowl with P.C.E. and Basketweave Ext. – Green (scarce and very desirable; really nice)

- ___ 128. N Wishbone Bowl with P.C.E. and Basketweave Ext. – Purp. (scarce; nice bright satiny finish)
- ___ 129. N G & C Cologne Bottle and Stopper – Dk. Mari. (nice color and irid.)
- ___ 130. **N G & C LARGE OPEN RUFFLED COMPOTE – PURP. (RARE; DESIRABLE; NICE COLOR AND IRID.)**
- ___ 131. 10" N G & C "Salad" Bowl with P.C.E. and Basketweave Ext. – Amyth. (quite a rare shape for this item)
- ___ 132. N G & C 2 Handled Bon Bon – Amyth.
- ___ 133. N G & C 2 Handled Bon Bon – Green (nice irid.)
- ___ 134. N G & C 8 Ruffled Bowl with Basketweave Ext. – Green (really nice irid.; has green pigment string)
- ___ 135. **N FRUIT AND FLOWERS 2 HANDLED STEMMED BON BON – ICE GREEN (SUPER EXAMPLE; GREAT COLOR AND IRID. – REALLY NICE)**
- ___ 136. N Three Fruits Medallion Stippled 8 Ruffled Spatula ftd. Bowl with Meander Ext. – Mari. (nice example)
- ___ 137. N Three Fruits 8 Ruffled Bowl with Basketweave Ext. – Mari.
- ___ 138. N Beaded Cable ftd. Ruffled Rose Bowl – Blue (nice color)
- ___ 139. (2) N G & C Tumblers – Amyth./ N Grape Arbor Tumbler – Purp. (selling choice)
- ___ 140. **N STRAWBERRY 8 RUFFLED BOWL WITH PLAIN EXT. – EMERALD GREEN (SUPER COLOR WITH GREAT IRID.; NICE!!!)**
- ___ 141. N Strawberry Bowl with P.C.E. and Basketweave Ext. – Amyth. (nice multi-colored irid.)
- ___ 142. 10" Wild Strawberry 8 Ruffled Bowl with Basketweave Ext. – Green (scarce; nice)
- ___ 143. N Grape and Gothic Arches Tumbler – Pearlized Custard/ N Swirl Tumbler – Mari. (selling 2 for 1 money)
- ___ 144. **6" N "EAGLE FURNITURE CO." 2 SIDED CARD TRAY WITH BASKETWEAVE EXT. – PURP. (RARE ADVERTISING ITEM WITH NICE AVERAGE IRID.)**
- ___ 145. **N ROSE SHOW PLATE – ICE BLUE (RARE AND VERY DESIRABLE; GREAT COLOR AND BRIGHT IRID.)**
- ___ 146. **N ROSE SHOW PLATE – ICE GREEN (ANOTHER GREAT COLORED ITEM WITH SUPER IRID.; MANUF. CHECK IN BASE)**
- ___ 147. **N ROSE SHOW PLATE – BLUE (VERY DESIRABLE; HAS ELECTRIC BLUE HIGHLIGHTS)**
- ___ 148. **N POPPY SHOW 8 RUFFLED BOWL – ELEC. BLUE (RARE AND VERY DESIRABLE; NICE BLUE HIGHLIGHTS)**
- ___ 149. **N POPPY SHOW 8 RUFFLED BOWL – MARI. (RARE; DESIRABLE; NICE RED HIGHLIGHTS)**
- ___ 150. **IMPERIAL POPPY SHOW VASE – PASTEL MARI. (SUPER, SUPER EXAMPLE WITH GREAT IRID.; NICE!!!)**
- ___ 151. Imperial Little Barrel Novelty – Smoke (very scarce; very nice)
- ___ 152. Imperial Little Barrel Novelty – Green (scarce)
- ___ 153. Imperial Little Barrel Novelty – Dk. Mari. (really nice irid.)
- ___ 154. **IMPERIAL CORN BOTTLE – DK. MARI. (VERY DESIRABLE; GREAT COLOR AND IRID.)**
- ___ 155. 9 ½" Dugan Border Plants domed 10 Ruffled Bowl – Purp. (scarce)
- ___ 156. Dugan Paneled Cherries ftd. 10 Ruffled Bowl – Mari.
- ___ 157. Dugan Question Mark 2 Handled Stemmed Bon Bon – Mari.
- ___ 158. Dugan Question Mark domed 4 sided Bowl – Blue Opal (non-carnival scarce item)
- ___ 159. 9" Dugan Caroline Flared Bowl with tight Crimped Edge – P. Opal.
- ___ 160. Dugan Cherry Wreath Master Berry Bowl – P. Opal (actually quite a scarce item; nice opal.)
- ___ 161. Dugan Beaded Shell Tumbler – Amyth. (odd tint)
- ___ 162. Dugan Floral and Grape Tumbler – Mari.
- ___ 163. Dugan Peacock at the Fountain Tumbler – Blue
- ___ 164. Fenton Butterfly and Berry Tumbler – Blue
- ___ 165. **9 ¾" FENTON DRAGON AND STRAWBERRY LG. BALL FTD. 8 RUFFLED BOWL – GREEN (RARE AND DESIRABLE ITEM; NICE SATINY FINISH)**
- ___ 166. 8 ¼" Fenton Dragon and Lotus I. C. Shaped Bowl – Blue (nice color and detail)
- ___ 167. 8 ½" Fenton Captive Rose Bowl with 3 in 1 Edge – Blue (nice color)
- ___ 168. Fenton Captive Rose 2 Handled Bon Bon – Green (scarce color)
- ___ 169. Fenton Butterflies 2 Handled Bon Bon – Green
- ___ 170. **9" FENTON HOLLY 8 RUFFLED BOWL – RED (NICE BRIGHT COLOR – VERY DESIRABLE)**
- ___ 171. 9" Fenton Holly 8 Ruffled Bowl – Amber (very scarce base color)
- ___ 172. 9" Fenton Holly Bowl with 3 in 1 Edge – Blue (satiny)
- ___ 173. 8" Fenton Two Flowers spatula ftd 8 Ruffled Bowl – odd Amyth. (different looking item)
- ___ 174. Fenton Persian Medallion Stemmed Compote with Crimped Edge – Blue (nice color)
- ___ 175. **6" FENTON LOTUS AND POINSETTIA 6 RUFFLED FTD. SAUCE – ICE GREEN OPAL. (RARE AND VERY DESIRABLE; REALLY TOUGH ITEM – NICE!!!)**
- ___ 176. Fenton Blackberry Spray 6 Ruffled Hat – Lime Green/ Mari. (scarce base color)
- ___ 177. 9" Fenton Peacock and Grape 8 Ruffled Bowl – Green (super example)
- ___ 178. 9 ¼" Fenton Vintage Grape 6 Ruffled Bowl – Amyth.
- ___ 179. 8 ¾" Fenton Vintage Grape Bowl with 3 in 1 Edge – Green
- ___ 180. 7" Fenton Lions 6 Ruffled Bowl – Blue (very scarce; sorta silvery)

- ___ 181. 9 3/4" Fenton Cherry Chain Lg. 9 Ruffled Bowl with O.T. Ext. – Blue
- ___ 182. 7 1/2" Fenton Acorn 8 Ruffled Bowl – Blue
- ___ 183. Fenton Orange Tree Shaving Mug – Blue
- ___ 184. Fenton Orange Tree Standard Mug – Blue
- ___ 185. **FENTON KITTENS CUP AND SAUCER – DK. MARI. (GREAT COLOR; REALLY NICE EXAMPLE)**
- ___ 186. Fenton 2 Row Open Edge 2 sided Hat with "Miller's Furniture" Advertising – Dk. Mari. (a better example)
- ___ 187. 10 1/4" Tall Fenton Diamond Point Columns Swung Vase – Mari.
- ___ 188. Fenton Butterfly and Fern Tumbler with Manuf. Ground Base – Mari. (dark satiny finish)
- ___ 189. Fenton Orange Tree Stemmed Sherbet – Mari.
- ___ 190. **FENTON ARCHED FLUTE STRETCH TOOTHPICK HOLDER – WISTERIA (RARE AND ALWAYS IN DEMAND; NICE COLOR)**
- ___ 191. M'burg Diamond Tumbler – Amyth. (super example)
- ___ 192. M'burg Diamond Tumbler – Green (super example)
- ___ 193. M'burg Diamond Tumbler – Mari. (super example)
- ___ 194. 10" M'burg Holly Whirl 6 Ruffled Bowl – Amyth. (satiny finish)
- ___ 195. **8 1/2" M'BURG TROUT AND FLY I.C. SHAPED BOWL – GREEN (SUPER SATINY EXAMPLE WITH A GREAT SHAPE)**
- ___ 196. **8 1/2" M'BURG TROUT AND FLY I.C. SHAPED BOWL – GREEN (RADIUM AND RARE; GREAT COLOR AND IRID.)**
- ___ 197. **9" M'BURG TROUT AND FLY BOWL WITH 3 IN 1 EDGE – AMYTH. (RARE AND DESIRABLE; SATINY AND NICE)**
- ___ 198. 9" M'burg Trout and Fly Bowl with 3 in 1 Edge – Mari. (satiny and scarce)
- ___ 199. 9" M'burg Big Fish Bowl with 3 in 1 Edge – Mari. (rare pattern; satiny and nice)
- ___ 200. **8" M'BURG BIG FISH I.C. SHAPED BOWL – AMYTH. (RARE AND A NICE SATINY EXAMPLE)**
- ___ 201. 9 1/4" M'burg Rays and Ribbons 6 Ruffled Crimped Edge Bowl – Dk. Mari. (super radium finish – one of the best)
- ___ 202. 9" M'burg Blackberry Wreath 6 Ruffled Bowl – Green (radium and nice)
- ___ 203. 6 1/4" M'burg Cosmos I.C. Shaped Bowl – Green (satiny – silvery)
- ___ 204. 8 1/4" M'burg Mayan I.C. Shaped Bowl – Dark Green (very odd dark Olive Green – radium and nice)
- ___ 205. **6" TALL X 6 1/4" DIAM. M'BURG ROSILAND STEMMED 6 RUFFLED COMPOTE – AMYTH. (RARE AND VERY DESIRABLE; HARDLY EVER FOR SALE)**
- ___ 206. 10 1/4" M'burg Rosiland Lg. 6 Ruffled Bowl – Green (satiny; scarce)
- ___ 207. 10" M'burg Rosiland Lg. 6 Ruffled Bowl – Mari. (satiny; scarce)
- ___ 208. M'burg Feather and Heart Tumbler – Mari.
- ___ 209. M'burg Feather and Heart Water Pitcher – Mari. (radium and really nice)
- ___ 210. **M'BURG HANGING CHERRIES HANDLED WATER PITCHER – GREEN (RARE AND VERY DESIRABLE; NICE AND SATINY)**
- ___ 211. **M'BURG HANGING CHERRIES HANDLED WATER PITCHER – AMYTH. (RARE AND SATINY AND VERY TOUGH TO FIND)**
- ___ 212. 7 1/2" M'burg Hanging Cherries I.C. Shaped Bowl – Green (satiny and nice)
- ___ 213. **M'BURG HOBNAIL SPITTOON – AMYTH. (RARE AND DESIRABLE; NICE COLOR AND RADIUM IRID.)**
- ___ 214. M'burg Swirl Hobnail Rose Bowl – Mari. (scarce; nice dark color)
- ___ 215. **10 3/4" TALL X 6 1/4" BASE M'BURG WILD ROSE KEROSENE LAMP – GREEN (VERY RARE AND VERY DESIRABLE; GREAT RADIUM IRID.)**
- ___ 215a. 7" Tall x 5 1/2" Base Riverside "Clinch on Collar" Wild Rose Finger Lamp – Crystal (very rare crystal example)
- ___ 216. M'burg Sunflower Pin Tray – Amyth. (rare; perfect with average color)
- ___ 217. **M'BURG MARYLIN HANDLED WATER PITCHER – DK. MARI. (RARE AND VERY DESIRABLE; NICE SATINY FINISH)**
- ___ 218. M'burg Diamonds Water Pitcher – Amyth. (scarce; satiny)
- ___ 219. M'burg Diamonds Water Pitcher – Mari.
- ___ 220. **M'BURG DEEP GRAPE 4 SIDED SQUARE COMPOTE – AMYTH. (RARE AND VERY DESIRABLE; RARE SHAPE WITH A NICE SATINY FINISH)**
- ___ 221. 9 1/2" M'burg Fleur de Lei domed I.C. Shaped Bowl – Dk. Mari. (super color; dark radium and nice)
- ___ 222. 9 1/2" M'burg Fleur de Lei domed 6 Ruffled Crimped Edge Bowl – Amyth. (radium and really nice)
- ___ 223. 10 1/4" M'burg Fleur de Lei Bowl with 3 in 1 Edge – Green (satiny; scarce)
- ___ 224. 9 1/4" M'burg Blackberry Wreath Bowl with 3 in 1 Edge – Green (radium and attractive)
- ___ 225. **M'BURG OHIO STAR VASE – GREEN (SUPER RADIUM EXAMPLE; BRIGHT IRID. AND REALLY, REALLY NICE)**
- ___ 226. **M'BURG OHIO STAR VASE – DK. MARI. (ANOTHER SUPER BRIGHT EXAMPLE; RADIUM AND NICE!)**
- ___ 227. **M'BURG OHIO STAR VASE – AMYTH. (SATINY AND VERY DESIRABLE; AVERAGE IRID.)**
- ___ 228. 9 3/4" M'burg Holly Sprig 6 Ruffled Bowl – Green (radium and nice)

- ___229. 8 1/2" M'burg Grape Wreath Variant 6 Ruffled Bowl – Green (radium and nice)
- ___230. **M'BURG ROSE COLUMNS VASE – AMYTH. (RARE AND DESIRABLE; SILVERY AND SATINY)**
- ___231. 10" M'burg Nesting Swan 6 Ruffled Bowl – Green (radium and really nice)
- ___232. 9 1/2" M'burg Nesting Swan 6 Ruffled Bowl – Mari. (radium and nice)
- ___233. 10" M'burg Nesting Swan 6 Ruffled Bowl – Amyth. (satiny finish)
- ___234. **M'BURG PEACOCK 6 PC. FLARED BERRY SET – AMYTH. (RADIUM AND VERY DESIRABLE; REALLY NICE)**
- ___235. **7 1/2" M'BURG COURTHOUSE 6 RUFFLED BOWL – AMYTH. (RADIUM; REALLY NICE FINISH AND DETAIL)**
- ___236. 10" M'burg Blackberry Wreath Lg. I.C. Shaped Bowl – Amyth. (radium and really nice)
- ___237. **9" M'BURG ZIG ZAG 4 SIDED SQUARE BOWL WITH CRIMPED EDGE – AMYTH. (RARE SHAPE AND VERY DESIRABLE; NICE)**
- ___238. 8 1/2" M'burg Holly Sprig 6 Ruffled Bowl – Amyth. (radium; really nice)
- ___239. (2) M'burg Hanging Cherries Sugar lids – (1) Mari. (1) Green
- ___240. **N PEACOCKS STIPPLED PLATE WITH RIBBED EXT. – ELEC. BLUE (VERY DESIRABLE WITH BRIGHT IRID. – REALLY NICE EXAMPLE)**
- ___241. **N PEACOCKS PLATE WITH RIBBED EXT. – GREEN (RARE AND REALLY NICE COLOR AND IRID.)**
- ___242. **N PEACOCKS 8 RUFFLED BOWL WITH RIBBED EX. – GREEN (EXCEPTIONAL EXAMPLE WITH BRIGHT COLOR AND IRID.)**
- ___243. **N PEACOCKS PLATE WITH RIBBED EXT. – ODD AMYTH. (RARE SODA GOLD IRID. – REALLY NICE ITEM)**
- ___244. N Peacocks Plate with Ribbed Ext. – Purp. (scarce; bright highlights)
- ___245. **N PEACOCKS PLATE WITH RIBBED EXT. – DK. MARI. (VERY DESIRABLE; REALLY ATTRACTIVE)**
- ___246. N Peacocks Stippled 8 Ruffled Bowl with Ribbed Ext. and Narrow Base – Dk. Mari. (nice color; very scarce item)
- ___247. N Peacocks Plate with Ribbed Ext. – White (super irid.)
- ___248. N Peacocks Plate with Ribbed Ext. – Ice Green (nice average item)
- ___249. 8 3/4" N Three Fruits domed 8 Ruffled Bowl with Basketweave and Vintage Ext. – Green (scarce; bright satiny finish)
- ___250. **9" N THREE FRUITS MEDALLION FTD. 8 RUFFLED BOWL WITH MEANDER EXT. – AQUA OPAL. (RARE; DESIRABLE WITH NICE OPAL EDGE)**
- ___251. 8 3/4" N Three Fruits Medallion ftd 8 Ruffled Bowl with Meander Ext. – Green (scarce base color)
- ___252. 7 1/2" N Fruit and Flowers Plate with Basketweave Ext. – Green (scarce; bright satiny finish)
- ___253. N Three Fruits 8 Ruffled Bowl with Basketweave Ext. – Amyth. (satiny)
- ___254. N Three Fruits 8 Ruffled Bowl with Basketweave Ext. – Mari. (satiny)
- ___255. **N THREE FRUITS STIPPLED PLATE WITH RIBBED EXT. – SAPPHIRE/ MARI. (RARE BASE COLOR; HAS A MARI. OVERLAY – TOUGH TO FIND)**
- ___256. **N THREE FRUITS STIPPLED PLATE WITH RIBBED EXT. – ELEC. BLACK – FANTASTIC IRID.; YA CAN'T SEE THROUGH IT; REALLY NEAT!!!)**
- ___257. N Three Fruits Stippled Plate with Ribbed Ext. – Amyth. (odd tint; quite scarce)
- ___258. N Three Fruits Stippled Plate with Ribbed Ext. – Dk. Mari. (super dark example; really nice!!!)
- ___259. **N THREE FRUITS STIPPLED 8 RUFFLED BOWL WITH RIBBED EXT. – ELEC. BLUE (ANOTHER SUPER EXAMPLE WITH GREAT BLUE HIGHLIGHTS)**
- ___260. **N THREE FRUITS 8 RUFFLED BOWL WITH PLAIN EXT. – HONEY AMBER (RARE BASE COLOR – GREAT IRID.)**
- ___261. N Three Fruits 8 Ruffled Bowl with Plain Ext. – Green/ Emerald Green (Emerald Green highlights – really bright base color)
- ___262. 9 1/2" N Three Fruits Flat Plate with Basketweave Ext. – Green (really nice item)
- ___263. 9" N Three Fruits Flared Plate with Basketweave Ext. – Mari. (nice satiny finish)
- ___264. Maker (?) Bamboo Tankard Tumbler – Dk. Mari. (super dark irid.)
- ___265. Surprise!!!!....who knows????

DONALD DORAIS
150 HIGHLAND AVENUE
CUMBERLAND, RI 02864

BURNS

AUCTION SERVICE



VISIT www.necga.com
CLICK CARNIVAL GLASS LINKS
PAGE for pictures and brochures

LEE MARKLEY
BOX 306
MENTONE, IN 46539



Lot #95



Lot #170



Lot #120



Lot #256



Lot #20



Lot #255



Lot #148



Lot #205



Lot #259

CARNIVAL GLASS AUCTION SATURDAY, OCTOBER 22nd 10 A.M.