

Exciting pieces from  
three major collectors

# CARNIVAL GLASS & Pillin Pottery AUCTIONS

10

2011 Pillin Art: Friday, Sept. 30, 6 p.m.  
Glass: Saturday, Oct. 1, 9 a.m  
Crowne Plaza Bridgton Hotel – St. Louis Airport

25

From the  
Dale Matheny  
& George Thomas  
Estates and  
The Bob Williams  
Collection

200

50

275

35

Seeck Auctions  
Jim & Jan Seeck  
641-424-1116

# Crowne Plaza Bridgton Hotel —St. Louis Airport

11228 Lone Eagle Drive  
St. Louis, Missouri 63044

JIM & JAN SEECK

641-424-1116

## October 1, 2011, 9 a.m.

### OUTSTANDING CARNIVAL GLASS AUCTION

Matheny/Thomas Estates & Bob Williams Collection

(Previews: Friday, Sept. 30: 3:00 P.M. & Sat., Oct. 1<sup>st</sup>, 7:00 A.M.)

Seeck Auctions is pleased to be selling at auction this outstanding selection of Carnival Glass. We have around 100 pieces from the Dale Matheny and George Thomas estates from California. We also have the Bob Williams collection of Carnival Glass from South Dakota. Bob and his wife enjoyed collecting for several years and have a nice variety of glass including some super aqua opal and two fantastic farmyard bowls. We hope you can attend as this will be a fun and exciting auction.

**Online absentee bidding for the Carnival Glass auction closes at Fri. Sept. 30, 6 p.m. CST**

**NO BUYER'S PREMIUM**

**OPEN TO THE PUBLIC**

For an Online Auction Catalog, Check our Website: [www.seeckauction.com](http://www.seeckauction.com)

For the complete Auction Information, turn to the inside cover of the  
Pillin Catalog on the reverse side of this catalog.

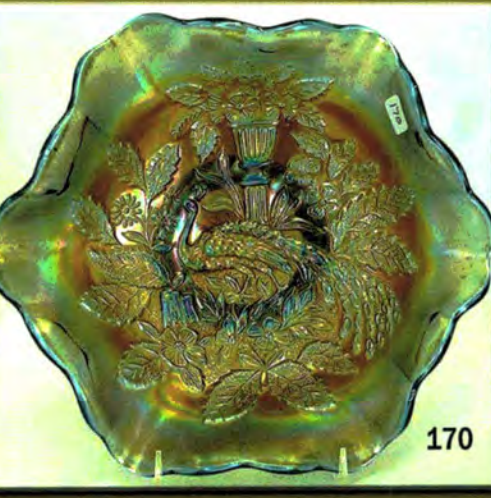
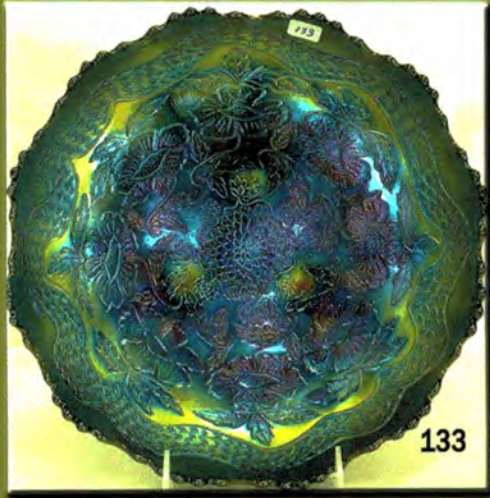
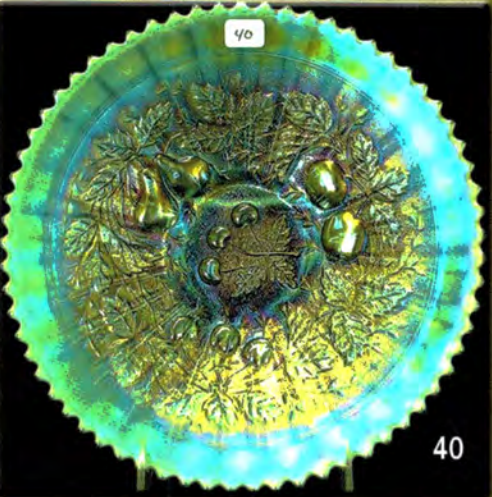
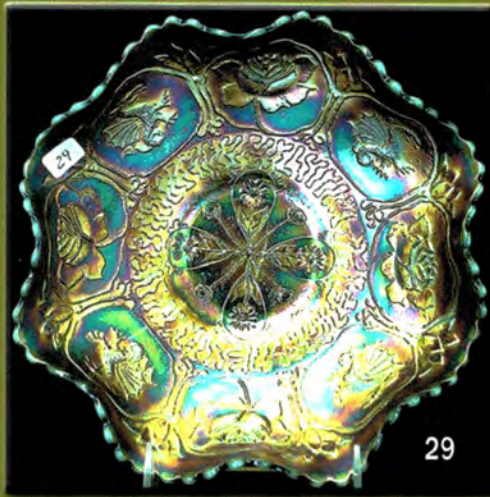
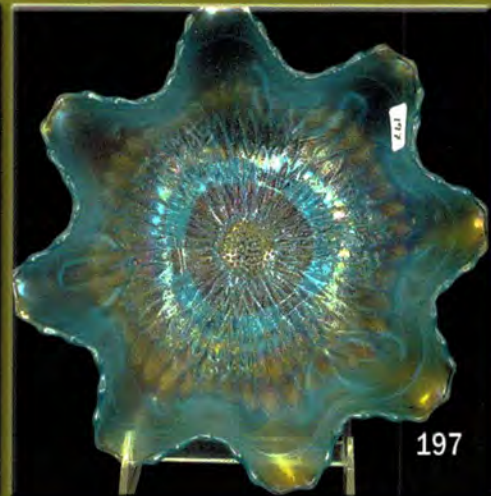
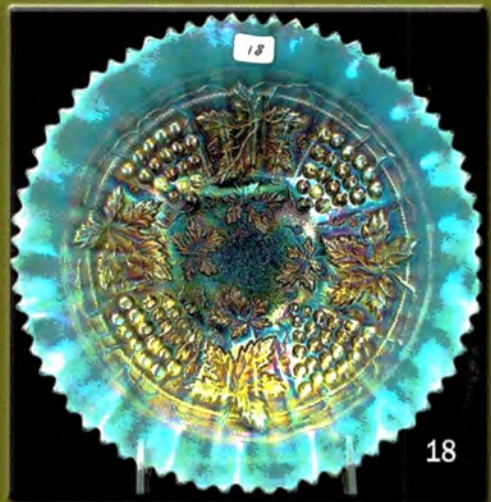
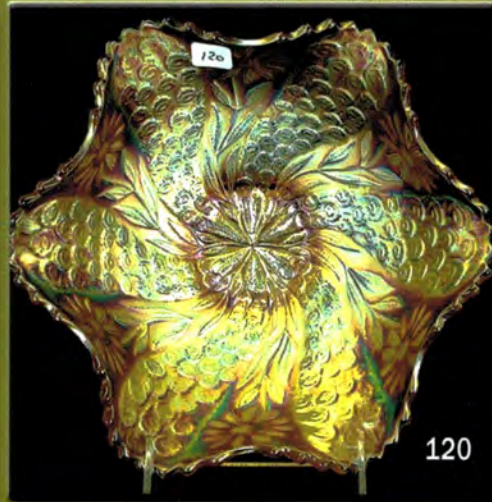
- \_\_\_ 1. Fashion rose bowl - marigold
- \_\_\_ 2. Honeycomb & Beads crimped edge bowl - peach opal
- \_\_\_ 3. Wreath of Roses bonbon - green
- \_\_\_ 4. Wreath of Roses bonbon - amethyst
- \_\_\_ 5. Curved Star 9" vase - blue - nice
- \_\_\_ 6. Grape & Cable 9" plate w/plain back - purple - pretty
- \_\_\_ 7. Peacock Tail round sauce - blue - lacks irid.
- \_\_\_ 8. Wide Panel rose bowl - marigold on milk glass
- \_\_\_ 9. Grape Delight nut bowl - purple
- \_\_\_ 10. Poppy Show ruffled bowl - aqua opal - pastel & fantastic, a TOP RARITY, minor heat check in base, but who cares, this is beautiful
- \_\_\_ 11. Poppy Show ruffled bowl - green - extremely rare & pretty, minor roughness on seam in base, no harm
- \_\_\_ 12. Poppy Show ruffled bowl - amethyst - super pretty, very rare
- \_\_\_ 13. Poppy Show ruffled bowl - marigold - scarce, very nice
- \_\_\_ 14. Rose Garden rose bowl on metal base - marigold
- \_\_\_ 15. Good Luck 9" plate w/ribbed back - green- fantastic example, super pretty
- \_\_\_ 16. Good Luck 9" plate w/BW back - purple - minor pinpoint between points, no harm & nice
- \_\_\_ 17. Unusual Wide Panel or Flute 9" vase - smoke - has very stretchy smoke irid., pretty, minor nick on bottom rib at point, never seen another
- \_\_\_ 18. Stippled Grape & Cable PCE bowl w/ribbed back - aqua opal - one of the finest pastel examples I have sold, great opal w/beautiful irid., minor manufacture split between points
- \_\_\_ 19. Stippled Grape & Cable PCE bowl w/ribbed back - ice blue - scarce, nice
- \_\_\_ 20. Stippled Grape & Cable Variant PCE bowl w/ribbed back - blue - has electric highlights
- \_\_\_ 21. Poinsettia milk pitcher - smoke - as pretty as these get, a dandy
- \_\_\_ 22. Blackberry spray ruffled hat - aqua opal - very pretty, scarce
- \_\_\_ 23. Blackberry Spray ruffled hat - red - nice
- \_\_\_ 24. Thistle & Thorn 7" ruffled bowl - marigold
- \_\_\_ 25. Rustic 18" funeral vase w/plunger base - green - super example, fantastic!
- \_\_\_ 26. Rustic 18 1/2" funeral vase w/plunger base - amethyst - super pretty, a great vase
- \_\_\_ 27. Rustic 17 1/2" funeral vase w/plunger base - blue - super, a beauty
- \_\_\_ 28. Estate cream & sugar - peach opal - creamer has "Souvenir Dover & Foxcroft, ME", sugar has "Jackson, MN" adv.
- \_\_\_ 29. Dragon & Lotus ruffled bowl - aqua opal - nice, super rare!
- \_\_\_ 30. Carnival Glass Dragon & Lotus ruffled bowl - red - cherry red color & pretty
- \_\_\_ 31. Dragon & Lotus ruffled bowl - amethyst - super pretty, large chip on base
- \_\_\_ 32. Dragon & Lotus ruffled bowl - marigold
- \_\_\_ 33. Peacock at the Fountain master berry bowl - ice blue - scarce, very pretty
- \_\_\_ 34. Raindrops dome ftd bowl - purple
- \_\_\_ 35. Carnival Glass Farmyard 6 ruffled bowl - purple - super pretty, rare & highly desirable, beautiful even irid.
- \_\_\_ 36. Persian Garden ruffled sauce - peach opal
- \_\_\_ 37. Daisy & Drape flared out vase - blue - pretty, one leg broken & glued back on
- \_\_\_ 38. Daisy & Drape flared out vase - blue - scarce, nice
- \_\_\_ 39. Soda Gold turned down centerpiece bowl - smoke
- \_\_\_ 40. Stippled Three Fruits 9" plate w/ribbed back - aqua opal - pastel & pretty, a beautiful & rare plate
- \_\_\_ 41. Stippled Three Fruits 9" plate w/ribbed back - sapphire - rare plate, nice
- \_\_\_ 42. Stippled Three Fruits 9" plate w/ribbed back - purple - has lavender coloring, slight slag effect in base, pretty
- \_\_\_ 43. Little Barrel novelty - smoke - minor pinpoint on top edge, a nice one
- \_\_\_ 44. Vintage fernery - amethyst - nice
- \_\_\_ 45. Rose Show 9" plate - ice green - very scarce & nice, chip on rose
- \_\_\_ 46. Rose Show 9" plate - white - nice
- \_\_\_ 47. Soda Gold water pitcher - smoke - nice
- \_\_\_ 48. Soda Gold tumblers (2) - smoke - both to go
- \_\_\_ 49. Ski Star dome ftd handgrip plate - peach opal
- \_\_\_ 50. Acorn Burrs 8 pc. punch set - ice blue - extremely rare w/super irid., a beautiful set!
- \_\_\_ 51. Acorn Burrs 8 pc. punch set - white - frosty, a pretty set
- \_\_\_ 52. Beaded Shell mug - blue
- \_\_\_ 53. Beaded Shell mug - amethyst
- \_\_\_ 54. Lattice & Grape 7 pc. tankard water set - marigold
- \_\_\_ 55. M'burg Peacock master berry bowl - amethyst - radium
- \_\_\_ 56. M'burg Peacock indiv. berry bowls (2) - amethyst - sold choice
- \_\_\_ 57. M'burg Holly Sprig 7" crimped edge bowl - amethyst - radium, pretty

58. Stippled Grape & Cable 10" ruffled bowl w/BW back - green - nice
59. Round Up ruffled bowl - white - pretty
60. Wishbone 10" PCE bowl - blue - electric & fantastic, several minor pinpoints between points that have been
62. Hearts & Flowers ruffled compote - ice green - scarce
63. Hearts & Flowers ruffled compote - aqua opal - nice
64. Feathered Serpent 10" ruffled bowl - amethyst
65. Blackberry Open Edge 7 1/2" whimsey vase - blue - very rare vase, minor chip on base
66. Blackberry Open Edge 9 1/4" whimsey vase - marigold - rare vase, heat check by seam in base
67. M'burg Fleur De Lis IC shaped dome ftd bowl - green - satin & pretty, typical nicks on sawtooth base
68. M'burg Fleur De Lis IC shaped dome ftd bowl - marigold - radium, pretty, typical little nicks on sawtooth base
69. Floral & Grape 7 pc. water set - blue
70. Central Shoe Store adv. ruffled bowl - amethyst - scarce & nice
71. Strawberry 9" plate w/BW back - green
72. Strawberry 9" plate w/plain back - marigold
73. Singing Birds water pitcher - marigold - nice
74. Singing Birds tumblers - marigold
75. Rose Show ruffled bowl - horehound - very rare color, has polished chip on outside edge
76. Rose Show ruffled bowl - ice green - scarce, nice
77. Rose Show ruffled bowl - ice blue - scarce, also nice
78. Rose Show ruffled bowl - aqua opal - pastel w/super opal, another beautiful aqua opal piece
79. Ribbon Tie 3 in 1 edge bowl - amethyst
80. Stippled Grape & Cable Variant ruffled bowl w/ribbed back - purple - scarce & nice
81. Stippled Grape & Cable Variant ruffled bowl w/ribbed back - green
82. M'burg Nesting Swan ruffled bowl - green - radium, nice
83. M'burg Nesting Swan ruffled bowl - amethyst - radium, pretty
84. Fluffy Peacock 5 pc. water set - amethyst - scarce, nice, have 2 additional tumblers, both damaged
85. Fluffy Peacock water pitcher - marigold - crack in handle
86. Lotus & Grape 9" plate - green - scarce
87. Lotus & Grape 9" plate - marigold - rare plate, not many known
88. Vintage 7" plate - blue
89. Good Luck PCE bowl w/ribbed back - green - super unique looking bowl, has a great look!
90. Good Luck PCE bowl w/ribbed back - blue - electric & nice
91. Good Luck PCE bowl w/ribbed back - purple - nick on cleat of horseshoe
92. Good Luck PCE bowl w/ribbed back - marigold - nice
93. Captive Rose 9" plate - green - very pretty example
94. Captive Rose 9" plate - amethyst - scarce color, nice
95. Captive Rose 9" plate - marigold
96. Grape & Cable breakfast set - green - scarce color, crack in handle
97. Stag & Holly large size deep round ftd bowl - green - fantastic irid. on this rare bowl, neat piece!
98. Blackberry Spray square shaped hat - red - scarce
99. Blackberry Spray square shaped hat - amber - nice
100. M'burg Hobstar & Feather tulip top 12 pc. punch set - amethyst - very, very rare set & nice
101. Strutting Peacock cvd cream & cvd sugar - amethyst
102. Stag & Holly lg size IC shaped bowl - blue - spectacular, a beauty, minor nick on flat of one foot
103. Stag & Holly lg size IC shaped bowl - marigold - nice
104. Rustic 10" vase - amber - super neat vase, has pastel irid.
105. Rustic 9 3/4" vase - white
106. Holly 9" plate - amethyst - nice, very flat
107. Holly 9" plate - marigold
108. Peacocks PCE bowl w/ribbed back - ice green - scarce bowl
109. Peacocks PCE bowl w/ribbed back - green - super pretty, scarce
110. Peacocks PCE bowl w/ribbed back - blue - electric & super
111. Peacocks PCE bowl w/ribbed back - amethyst - lavender type irid.
112. Peacocks PCE bowl w/ribbed back - marigold - nice
113. Singing Birds 5 pc. berry set - marigold
114. Orange Tree ftd fruit bowl - blue
115. Peacock at Urn master IC bowl - ice green - nice, polished chip on base
116. Peacock at Urn master IC bowl - purple - nice, does have some irid. spotting on front
117. Peacock at Urn master IC bowl - marigold
118. Wishbone & Spades 6" plate - peach opal - nice
119. Wreath of Roses rose bowl - marigold
120. Peacock Tail & Daisy ruffled bowl - marigold - extremely rare bowl, one of just a few known, nice
- 120a. Imperial Grape 5 pc. wine set - smoke - super pretty set
121. Imperial Grape 4 pc. wine set - purple - super pretty bottle
122. Imperial Grape wine bottle - green
123. Imperial Grape 4 pc. wine set - marigold
124. Smooth Rays ruffled compote - blue opal
125. Diamond Rib 22" funeral vase - blue - very rare color for these, nice
126. Diamond Rib 19" funeral vase - amethyst - very rare & nice, heat checks in base
127. Diamond Rib 20" funeral vase - green - super nice example
128. Diamond Rib 19" funeral vase - marigold - has whimsey ruffled top, extremely rare
129. Imperial Grape 6" plate - marigold
130. Fenton's Peacock at Urn 9" plate - white - scarce, nice
131. Fenton's Peacock at Urn 9" plate - marigold - very pretty
132. M'burg Zig Zag IC shaped bowl - amethyst - radium, pretty
133. Two Flowers lg size IC shaped ftd bowl - blue -
133. Two flowers (cont.) spectacular, absolutely the best
134. Scroll Embossed 7" ruffled bowl - white ? some may call clambroth - has pretty irid.
135. Nippon PCE bowl w/ribbed back - purple - fantastic, has electric blue irid.
136. Nippon PCE bowl w/ribbed back - ice blue - scarce
137. Nippon PCE bowl w/BW back - green - minor nicks on base, unusual w/BW back
138. N's Bushel Basket - aqua opal - butterscotch & nice
139. N's Bushel Basket - ice green - scarce
140. N's Bushel Basket - marigold - dark, nice
141. Butterfly & Berry water pitcher - blue - scarce, nice
142. Butterfly & Berry tumbler - blue
143. Stag & Holly lg size ftd ruffled bowl - blue
144. Stag & Holly lg size ftd ruffled bowl - marigold
145. Stippled Three Fruits Medallion spt ftd ruffled bowl - aqua opal - lots of opal, nice
146. Stippled Grape & Cable bonbon - marigold - nice
147. Peacocks 9" plate w/ribbed back - marigold - pretty
148. Peacocks 9" plate w/ribbed back - ice green - scarce
149. Peacock & Grape ruffled bowl - marigold
150. M'burg Perfection water pitcher - amethyst - very rare, crack in handle
151. Imperial Grape ruffled bowl - smoke - nicks on edge
152. Imperial Grape ruffled bowl - amber - nice
153. Imperial Grape ruffled bowl - marigold
154. Diamond Rib 10" vase - green
155. Diamond Rib 11" vase - amethyst

156. M'burg Trout & Fly ruffled bowl - lavender - satin & very pretty, the fish is dynamite!
157. M'burg Trout & Fly ruffled bowl - green - radium & super, fish is also nice
158. Pansy ruffled bowl - purple
159. N's Thin Rib 13 1/2" mid-size vase - vaseline - extremely rare & nice
160. N's Thin Rib 12 1/2" mid-size vase - lime green - scarce color & nice
161. N's Thin Rib 12 1/2" mid-size vase - ice blue - rare color & nice, another goodie
162. N's Thin Rib 13" mid-size vase - white - scarce, frosty & pretty
163. N's Thin Rib 12 1/2" mid-size vase - blue - rare color, nice
164. N's Thin Rib 13" mid-size vase - green - scarce, nice
165. N's Thin Rib 11 3/4" mid-size vase - purple - super pretty, very short for these
166. N's Think Rib 13" mid-size vase - marigold - nice
167. Holly ruffled bowl - red - scarce & nice
168. Holly ruffled bowl - amethyst - very pretty, kind of a different color
169. Ski Star lg size 8 ruffled bowl - peach opal
170. M'burg Peacock at Urn 10" ruffled bowl - blue - very rare color & pretty
171. Heavy Vine 8" cologne bottle - marigold - scarce
172. Heavy Vine 7 1/2" cologne bottle - marigold - scarce
173. Heavy Vine 7" cologne bottle or perfume - marigold - scarce
174. Windmill round bowl - marigold
175. Concord 9" plate - green - very rare & nice
176. Concord 9" plate - amethyst - small spot of epoxy on seam
177. Concord 9" plate - marigold - rarest color, fabulous dark marigold, super!
178. Blackberry Spray 2 sides up basket - red
179. Fruits & Flowers bonbon - blue
180. Stippled Three Fruits ruffled bowl w/ribbed back-sapphire - absolutely fantastic, as pretty as they get, chip on edge
181. Stippled Three Fruits ruffled bowl w/ribbed back aqua opal - butterscotch & pretty
182. Stippled Three Fruits ruffled bowl w/ribbed back - marigold - dark & fantastic, minor pinpoint on base
183. Grape & Cable 4 pc. water set - purple
184. Stag & Holly spt fld ruffled bowl - amethyst
185. Fenton's Fine Rib 11 1/2" vase - vaseline opal - very rare vase, nice
186. Fenton's Fine Rib 13 1/2" vase - red - has unusual amber streaks throughout
187. Dragon & Lotus IC shaped bowl - reverse amberina - minor nick on point
188. Dragon & Lotus IC shaped bowl - blue
189. Heavy Grape chop plate - purple - absolutely super!
190. N's Wide Panel 17" funeral vase - marigold - minor pinpoint on base
191. Apple Tree 6 pc. water set - marigold - nice
192. Stippled Peacocks ruffled bowl w/ribbed back - renninger blue - as pretty as these get, rare
193. Stippled Peacocks ruffled bowl w/ribbed back -blue-scarce
194. M'burg Whirling leaves ruffled bowl - marigold - radium
195. Many Fruits 10 pc. punch set - purple - super pretty, has chip on edge
196. Peacock at the Fountain indiv. berry bowl - green
197. Sunflower spt fld ruffled bowl -ice blue-very rare &pretty
198. Fenton's Three Fruits 12 sided plate - amethyst
199. Grapevine Lattice 7" ruffled bowl - white
200. Farmyard square ruffled bowl - purple - super, super, a fantastic piece of glass!
201. Jacobean Ranger cvd jar - marigold
202. Jacobean Ranger cologne bottle - marigold
203. Jacobean Ranger perfume bottle - marigold
204. Forty Niner 5" perfume bottle - marigold - top of bottle has polishing
205. Grape & Cable master IC bowl - green - very nice, scarce
206. Ten Mums lg ruffled bowl - green
207. Morning Glory 12" funeral vase - purple - super pretty, has 11" wide mouth, neat vase
208. Grape & Cable dresser tray - marigold - dark, nice
209. Grape & Cable pin tray - marigold - scarce
210. Grape & Cable cologne bottles (2) - marigold - choice
211. Grape & Cable powder jar - marigold - nice
212. Grape & Cable hatpin holder - marigold - nice
213. Grape & Cable perfume bottle - marigold - scarce
214. Fenton's Grape & Cable ball fld ruffled bowl - green
215. Poppy Show 9" plate - ice blue - very scarce & highly desirable
216. Poppy Show 9" plate - purple - nice, minor nick on base
217. Poppy Show 9" plate - marigold - super, large chip on poppy
218. N's Thin Rib 7" squatty vase - ice blue - super pretty one
219. N's Thin Rib 7" squatty vase - purple - super
220. Peacocks ruffled bowl w/ribbed back-aqua opal-lots of opal, nice
221. Peacocks ruffled bowl w/ribbed back -ice blue-scarce, nice
222. Peacocks ruffled bowl w/ribbed back - purple - pretty
223. Grape & Cable Variant 9" plate w/plain back - purple
224. Grape & Cable Variant 9" plate w/plain back - marigold
225. Shell & Sand 9" plate - purple - rare plate & very nice
226. Peach 3 pc. berry set - white - scarce
227. Wishbone fld ruffled bowl - white - frosty, pretty
228. Wishbone fld ruffled, deep bowl - blue - nice
229. Wishbone fld ruffled bowl - marigold
230. Drapery 8" vase-sapphire-rare color, foot has been slightly polished
231. Drapery 10" vase - aqua - rare color, has restored foot
232. Drapery 7" vase - green - rare color, chip on foot
233. Drapery 8" vase - lime green
234. Drapery 8" vase - ice green - nick on foot
235. Drapery 7 1/2" vase - ice blue - scarce color
236. Drapery 8" vase - purple - pretty
237. Drapery 8" vase - amethyst - nick on foot
238. Drapery 8" vase - marigold - nice
239. Peacock at the Fountain butter dish, cvd sugar & spooner - marigold - nice, sold as set
240. Fenton's Grape & Cable fruit bowl - marigold - has Persian Medallion interior, nice
241. Rustic 17 1/2" mid-size vase - amethyst - nice
242. Rustic 16" mid-size vase - marigold - nice
243. Stag & Holly chop plate - marigold - scarce
244. Little Beads miniature round compote - blue opal
245. Little Beads miniature deep round compote - peach opal
246. Little Beads miniature deep round compote - marigold
247. Orange Tree ruffled bowl - red - cherry red color, looks red from across the room, couple of minor polished points
248. Basketweave Open Edge 2 sides up basket - ice green
249. Persian Medallion bonbon - red - scarce
250. Good Luck ruffled bowl w/ribbed back - aqua opal - pastel & very nice
251. Good Luck ruffled bowl w/ribbed back - ice blue - super pretty example, rare color
252. Good Luck ruffled bowl w/ribbed back - blue - electric, nice
253. Good Luck ruffled bowl w/BW back - purple - nice
254. Good Luck ruffled bowl w/ribbed back - marigold - pretty
255. Fashion water pitcher - smoke - scarce color
256. Fashion tumbler - smoke
257. Wild Rose open edge nut bowl - green - super pretty, some may call this emerald
258. Three Row Open Edge ruffled bowl - celeste blue - rare & nice
259. Grape & Cable sweetmeat - purple

260. Diamond Point 10" vase - lime green - scarce, nice
261. Diamond Point 11" vase - ice blue - scarce color
262. Diamond Point 9" vase - green
- 263. Wreathed Cherry water pitcher - white- rare, some gold on cherries**
264. Wreathed Cherry tumbler - white - slight gold on cherries
- 265. Chrysanthemum chop plate - smoke - super pretty example**
266. Three Fruits 9" plate w/BW back - purple
267. Three Fruits 9" plate w/BW back - marigold - chip on point
268. Cosmos & Cane butter dish - honey amber - scarce, nice
269. Flowers & Frames dome fld bowl - purple - nice
270. Gevurtz Bros. Furniture & Clothing adv. ruffled - purple - scarce, open bubble on edge
271. M'burg Peacock IC sauce - amethyst - satin
272. Heart & Vine ruffled bowl - green - super pretty
273. Corn bottles (2) - smoke - sold choice
274. Stippled Rays 7" ruffled bowl - red slag - small chip on base
- 275. Rose Show Variant 9" plate - renninger blue - fantastic irid.! this one glows!**
276. Heavy Diamond 6" vase - smoke - rare, cracked
- 277. Chrysanthemum lg ruffled fld bowl - green - very rare color, nice**
278. Chrysanthemum lg ruffled fld bowl - blue
279. Four Pillars 9" vase - marigold - small size version
- 280. M'burg Hobstar & Feather round compote - marigold extremely rare, one of a few known, minor restoration on one point on base**
- 281. Fenton's Flute 9 1/2" vase - red - scarce, chip on base, slight polishing on one flute**
282. Fenton's Flute 9" vase - aqua
283. Fenton's Flute 10" vase - green
284. Fenton's Flute 9 1/2" vase - vaseline - has marigold overlay, rare color
285. N's Peacock at the Fountain 5 pc. water set - purple - two extra tumblers w/damage
286. N's Peacock at the Fountain water pitcher - marigold
287. Lattice & Poinsettia ruffled fld bowl - white opal - not carnival
288. Grape & Cable cracker jar - marigold - nice
289. Grape & Cable bonbon - blue - nice
- 290. Grape & Cable punch bowl & base - marigold - nice**
291. DeVilbiss perfume - marigold - signed
292. DeVilbiss perfume - marigold - signed
293. DeVilbiss atomizer - marigold - unsigned
294. DeVilbiss atomizer - marigold - signed
- 295. N's Thin Rib JIP 8 3/4" vase - ice blue - very rare vase, nice, nick on base**
296. Luster Rose fld fruit bowl - smoke - scarce, nice
297. Eat Paradise Sodas 6" adv. plate - purple
298. Fenton Peacock at Urn 6 ruffled bowl - white
299. Honeycomb & Beads crimped edge bowl - purple - super irid.
- 300. Rustic 18" funeral vase - green - scarce color, nice**
- 301. Rustic 20" funeral vase - amethyst - scarce, nice**
- 302. Rustic 18" funeral vase - blue - also scarce & nice**
- 303. Rustic 21 1/2" funeral vase - marigold - extra tall for these, nice**
304. Fern crimped edge square shaped hat - marigold on milkglass, scarce
305. Three Fruits ruffled bowl w/plain back - green - minor pinpoint on back of point
306. Australian Kookaburra master ruffled bowl - dark - nice
307. Orange Tree IC shaped bowl - white
308. Beaded Bullseye 7 1/2" squatty vase - purple - has 6 1/2" mouth, super!
309. Orange Tree master berry bowl - marigold
- 310. Stippled Strawberry PCE bowl w/ribbed back - blue - electric & nice**
311. Persian Garden 6" plate - white - has Pool of Pearl back
312. Grape & Cable banana boat - marigold
313. Lotus & Grape card tray shaped bonbon - red - very rare, has manufacture chip on base, minor chip on backside of edge
314. Strawberry PCE bowl w/BW back - marigold
315. M'burg Hobstar & Feather giant rose bowl - green - rare, large chip on base
316. Fine Rib 10" vase - aqua - some may call this sapphire
317. Fine Rib 9" vase - aqua
318. Fine Rib 10 1/2" vase - light amber
319. Fine Rib 8 1/2" vase - lime green - has marigold overlay
320. Fine Rib 9 1/2" vase - marigold
- 321. Singing Birds mug - aqua opal - scarce & nice**
322. Singing Birds mug - green
323. Singing Birds mug - blue
- 324. Leaf Chain 7" ruffled bowl - red - scarce**
325. Butterfly & Berry 10" vase - blue - minor heat check in base
326. Zippered Heart giant rose bowl - green - very rare & desirable
327. Zipper Cut Panel cologne bottle - marigold
328. Fenton perfume - marigold
329. DeVilbiss perfume - marigold - signed
- 330. M'burg Trout & Fly IC shaped bowl- amethyst-satin, nice**
331. Buzz Saw & File water pitcher - marigold
332. Buzz Saw & File tumbler - marigold
- 333. Apple Blossom Twigs IC shaped bowl - purple - very nice**
334. Pinecone deep round sauce - marigold
- 335. M'burg Hobstar & Feather Heart shape - marigold - from bridge set, extremely rare, few known**
- 336. M'burg Hobstar & Feather Diamond shape - marigold - from bridge set, extremely rare, few known**
- 337. M'burg Frosted Hobstar & Feather Spade shape - crystal - from bridge set**
- 338. M'burg Frosted Hobstar & Feather club shape - crystal from bridge set**
339. M'burg Ohio Star tulip top 16 pc. punch set - crystal
- 340. Daisy & Drape turned in vase - amethyst - scarce**
341. Daisy & Drape turned in vase - white - nice
342. M'burg Blackberry Wreath 10" IC shaped bowl - green - radium, scarce, nice
- 343. Jockey Club adv. ruffled bowl - purple - scarce, nice**
344. Ski Star lg ruffled bowl - peach opal
- 345. N's Thin Rib 12 1/2" vase - vaseline - rare color, nice**
- 346. N's Thin Rib 10 1/2" vase - ice blue - scarce, pretty**
347. N's Thin Rib 10" vase - marigold
348. N's Thin Rib 10 1/2" vase - olive green
349. Holly ruffled hatshape - red - nice
- 350. Embroidered Mums ruffled bowl w/ribbed back - aqua opal - super opal w/gorgeous pastel irid., rare, rare!**
- 351. Embroidered Mums ruffled bowl w/ribbed back - ice green - pretty, scarce**
352. Persian Medallion chop plate - blue - scarce item
353. Blossomtime ruffled compote - purple
354. Cobblestone ruffled bowl - purple - chip out of center of bowl
355. Three Row vase - smoky marigold - repaired chip on top edge, rare vase
356. M'burg Primrose ruffled bowl - amethyst - silvery
- 357. Peacock & Grape IC shaped bowl - peach opal - super pretty example!**
358. Rib Optic 5 pc. water set w/lid - celeste blue
359. M'burg Hanging Cherries master IC shaped bowl - amethyst - satin
- 360. Hearts & Flowers PCE bowl w/ribbed back - blue - pretty, minor pinpoint between points**
361. Grape & Cable Variant PCE bowl w/plain back - green - nice
362. Parlor Panels 3 3/4" squatty vase - dark smoke - rare piece
363. Parlor Panels 4" squatty vase - light smoke - pretty piece
364. Parlor Panels 13" vase - purple - pretty

- \_\_\_ **365. Stippled Grape & Cable ruffled bowl w/ribbed back – green - scarce, nice**
- \_\_\_ 366. Corinth 9 1/2" vase - aqua green
- \_\_\_ 367. Corinth 9 1/2" vase - peach opal - very little marigold, just opal
- \_\_\_ 368. Scroll Embossed 9" plate - purple - super pretty
- \_\_\_ 369. Zippered Heart ruffled sauce - purple
- \_\_\_ 370. Rosalind 10" IC shaped bowl - marigold - tiny heat check in base, satin & pretty
- \_\_\_ 371. Big Basketweave 4 3/4" squatty vase - blue - rare color
- \_\_\_ 372. Big Basketweave 4 3/4" squatty vase - purple - pretty
- \_\_\_ 373. Big Basketweave 5" squatty vase - white - nice
- \_\_\_ 374. Unusual End of Day 8 3/4" paneled vase - marigold w/different colored decorated swirls
- \_\_\_ **375. Fruits & Flowers 10" ruffled bowl - ice green – rare bowl & pretty**
- \_\_\_ 376. Unusual 12 1/2" lava vase - marigold - don't know anything about this?
- \_\_\_ 377. Blackberry Spray CRE JIP hatshape - brick red - scarce
- \_\_\_ 378. Fine Cut & Roses rose bowl - purple
- \_\_\_ 379. Fine Cut & Roses rose bowl - marigold - tightly pinched in, minor nick on foot
- \_\_\_ **380. Field Flower water pitcher - smoke - beautiful, rare color**
- \_\_\_ 381. Curled Rib 9" JIP vase - smoke - nice
- \_\_\_ 382. Curled Rib 7 1/2" vase - smoke - pretty
- \_\_\_ **383. Nippon ruffled bowl w/ribbed back - ice green - pretty, scarce**
- \_\_\_ 384. Diamond Rib 8 1/2" vase - green - pretty
- \_\_\_ **385. Stippled Strawberry ruffled bowl w/ribbed back - blue - scarce, nice**
- \_\_\_ 386. Fashion 10 pc. punch set - marigold
- \_\_\_ 387. Tree Trunk 12" mid-size vase - amethyst - scarce
- \_\_\_ 388. Apple Blossom Twines ruffled bowl - peach opal - has smooth edge, scarce
- \_\_\_ 389. Imperial Grape ruffled sauce - marigold
- \_\_\_ 390. Stippled Peacocks PCE bowl w/ribbed back - blue - scarce,
- \_\_\_ 390. (con't.) chip on edge
- \_\_\_ 391. Shell & Sand deep round bowl - smoke - nice
- \_\_\_ **392. Knotted Beads 9" crimped edge vase - aqua - very rare vase & pretty**
- \_\_\_ 393. Oriental Poppy tumblers (3) - purple - sold choice
- \_\_\_ 394. Oriental Poppy tumblers (5) - marigold - sold choice
- \_\_\_ 395. Grape & Cable lg ruffled compote - purple
- \_\_\_ 396. Imperial Grape low ruffled bowl - marigold
- \_\_\_ 397. Persian Garden lg IC shaped bowl - white - minor nick on base
- \_\_\_ **398. Hearts & Flowers ruffled bowl w/ribbed back – marigold - scarce, nice**
- \_\_\_ 399. Inverted Strawberry 7" round bowl - green
- \_\_\_ **400. M'burg Hobstar & Feather 10 pc. punch set - marigold- has Fleur de Lis interior, rare & nice**
- \_\_\_ 401. Flute toothpick - marigold - nick on flute
- \_\_\_ **402. Leaf Columns 10" vase - sapphire - super pretty**
- \_\_\_ **403. Leaf Columns 10" vase - ice green - scarce**
- \_\_\_ **404. Leaf Columns 10" vase - ice blue - scarce, nice**
- \_\_\_ 405. Imperial Grape 11" ruffled bowl - purple - super pretty, lots of blue
- \_\_\_ 406. Panther ftd ruffled sauce - marigold
- \_\_\_ **407. Leaf Chain 9" plate - blue - scarce**
- \_\_\_ **408. M'burg Tulip Scroll 14" vase - green - very unusual to be this tall**
- \_\_\_ **409. Gothic Arches 14" vase - marigold - heat check in base**
- \_\_\_ **410. Gothic Arches 12" vase - smoke - scarce, nice**
- \_\_\_ 411. Diamond Rib 6 1/2" squatty vase - white - scarce
- \_\_\_ 412. Acanthus chop plate - smoke - pretty
- \_\_\_ 413. Acanthus deep round bowl - smoke - nice
- \_\_\_ 414. Lattice & Points 9" vase - purple - super pretty, mold roughness on base
- \_\_\_ **415. Orange Tree w/trunk 9" plate - blue - very pretty**
- \_\_\_ 416. Leaf & Beads rose bowl - aqua opal - butterscotch, nice
- \_\_\_ **417. N's Dandelion mug - aqua opal - a nice one!**
- \_\_\_ 418. N's Dandelion mug - purple - nice
- \_\_\_ 419. Tree Trunk 9 1/2" vase - marigold
- \_\_\_ **420. Loganberry vase – amber - nice**
- \_\_\_ 421. Fashion creamer - smoke
- \_\_\_ 422. Stippled Good Luck ruffled bowl w/ribbed back - blue - nice
- \_\_\_ 423. Imperial Grape tumbler - green
- \_\_\_ 424. N's Fine Rib 10" vase - blue - super pretty, rare color for these
- \_\_\_ 425. Diamond Lace 5 pc. water set - purple - nice
- \_\_\_ 426. M'burg Holly Sprig tri-cornered 7" bowl - amethyst - radium, scarce
- \_\_\_ 427. Four Flowers chop plate - peach opal - scarce, nice
- \_\_\_ 428. Orange Tree shaving mug - marigold
- \_\_\_ 429. Miniature Morning Glory 7" vase - purple - nice
- \_\_\_ **430. April Showers 10 1/2" vase - marigold on moonstone very rare color for this vase, only a few known, nice**
- \_\_\_ 431. Fenton's Good Luck ruffled bowl - marigold - very rare, has 7" crack around base
- \_\_\_ 432. Ranger 8" vase - smoke - rare vase
- \_\_\_ 433. N's Corn vase w/ plain base - purple - scarce
- \_\_\_ 434. Twigs vase - lime green opal - not carnival glass, another vase is included with this lot
- \_\_\_ **435. Waterlily ftd ruffled sauce - lime green opal - super pretty & very rare**
- \_\_\_ 436. Open Rose 9" plate - amber - nice
- \_\_\_ 437. Enameled Forget Me Not tankard water pitcher - marigold- scarce, nice
- \_\_\_ 438. Round Up IC shaped bowl - peach opal - pretty
- \_\_\_ 439. Finecut & Roses candy dish - white
- \_\_\_ **440. Homestead chop plate - amber - super pretty, rare**
- \_\_\_ 441. Four Pillars 10" vase - aqua opal - butterscotch, pretty
- \_\_\_ 442. Garden Mums 7" plate - amethyst - has minor nicks on lower
- \_\_\_ 443. Rustic 6" squatty vase - white
- \_\_\_ 444. Smooth Panels 9" plate - smoke
- \_\_\_ **445. Beaded Cable rose bowl - ice blue - scarce & desirable**
- \_\_\_ 446. Horse Medallion 7" plate - marigold - nice
- \_\_\_ **447. Three Row Open Edge 9" IC shaped bowl - ice green – has stretchy irid.**
- \_\_\_ 448. Grape Arbor tankard water pitcher - marigold
- \_\_\_ 449. File 11" chop plate - marigold - not sure the name of this
- \_\_\_ **450. N's Peacock at Urn master ruffled bowl – purple - rare bowl & nice**
- \_\_\_ **451. Rustic 19" funeral vase w/plunger base - green - rare pretty**
- \_\_\_ **452. Rustic 17" funeral vase - blue - nice, scarce**
- \_\_\_ **453. Diamond Rib 18" funeral vase - blue - super pretty, chip on one flute on top**
- \_\_\_ 454. Lot 4 perfumes - all marigold - all to go
- \_\_\_ 455. Lot of 5 Carnival Glass pieces - all marigold - all to go
- \_\_\_ 456. Lot of 4 berry bowls - all marigold - all to go
- \_\_\_ 457. Lot of 3 tumblers - all marigold - all to go
- \_\_\_ 458. Frosted Hobstar & Feather punch cups (6) - crystal, not carnival, all to go
- \_\_\_ 459. Decorated Carnival shade - minor nick on edge were applies to fixture
- \_\_\_ 460. Stippled Grape & Cable punch bowl base - smoke
- \_\_\_ 461. Stippled Grape & Cable punch bowl base - green
- \_\_\_ 462. Stippled Grape & Cable punch bowl base - marigold
- \_\_\_ 463. Grape & Cable punch bowl base - green
- \_\_\_ 464. Grape & Cable punch bowl bases (3) - all purple - all to go
- \_\_\_ 465. Imperial Grape punch bowl bases, one in marigold, one in amber, Twins punch bowl base in marigold - all to go
- \_\_\_ 466. M'burg Hobstar & Feather punch bowl base - marigold - nick on top of base





450



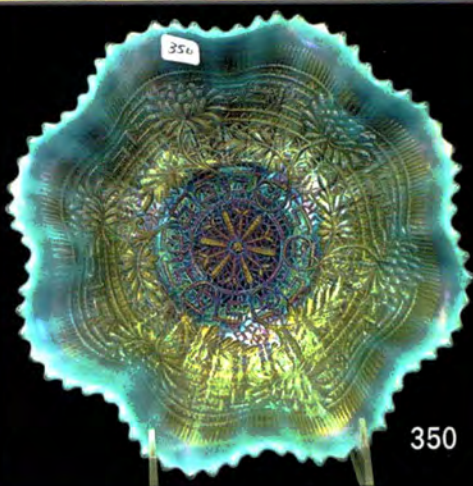
Northwood Thin Rib



280



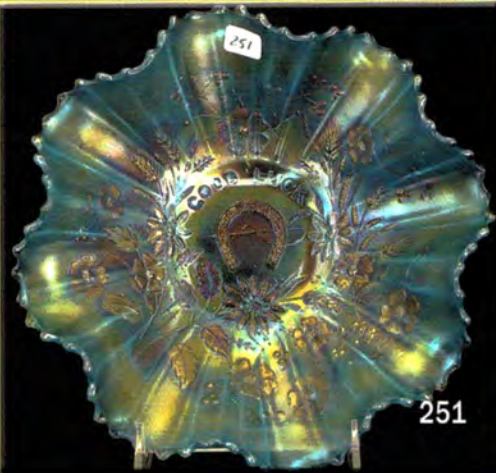
440



350



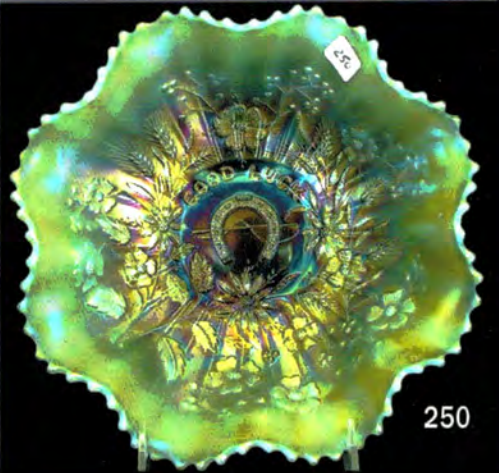
265



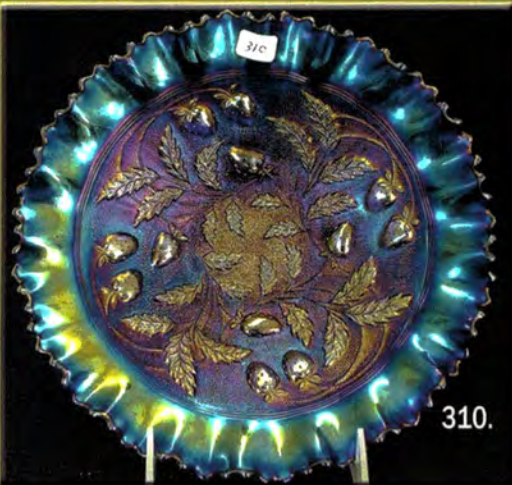
251



Rustic Funeral Vases



250



310.



400.

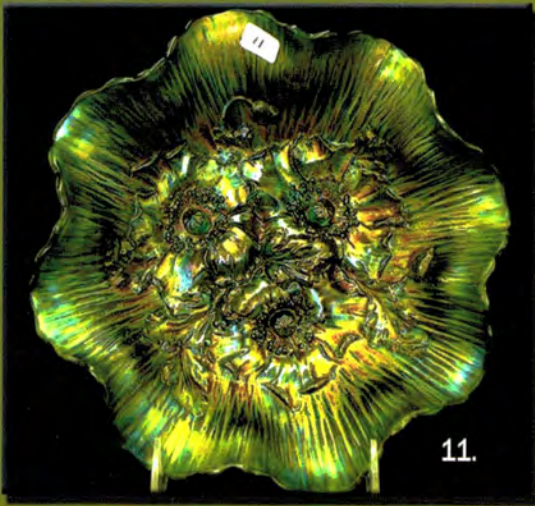


104.

430.

392





11.



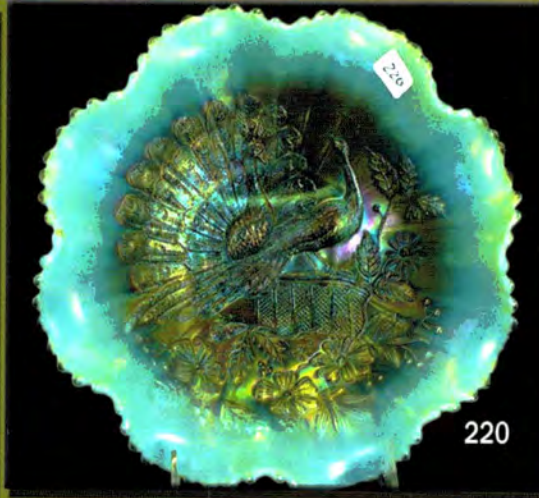
30



295.



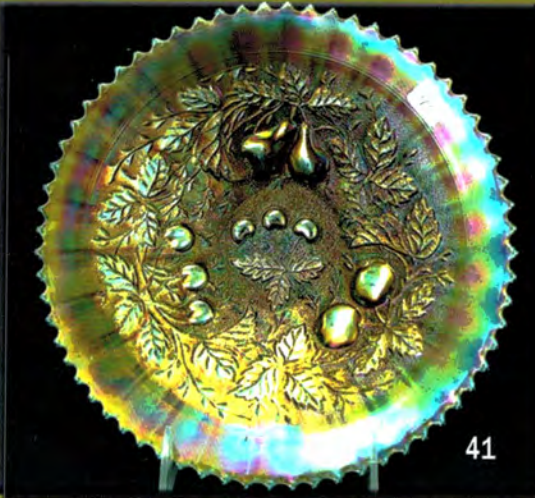
207



220



70



41



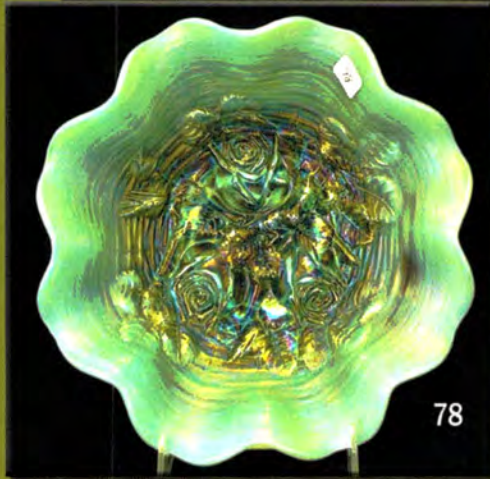
156



185



335



78



336

- 466a. Four Seventy Four punch bowl base - emerald green - chip on top edge
- 467. Acorn Burrs punch bowls bases (2) - purple - both to go
- 468. Acorn Burrs punch bowl base - marigold
- 469. Persian Garden fruit bowl base - white
- 470. Flute punch bowl base - purple
- 471. Fashion punch bowls bases (2) - marigold - both to go
- 472. Memphis punch bowl base - white
- 473. Memphis punch bowl bases (2) - purple - both to go
- 474. Grape & Cable master punch bowl base - light marigold
- 475. S-Repeat punch bowl base - purple - minor nick on flat of base
- 476. Thin Rib 12" vase - ice blue - believed to be contemporary
- 477. Scarab paperweight - purple
- 478. Imperial Grape butter dish, cream & sugar salt & pepper - marigold - marked IG, all to go
- 479. Cherry & Cable cracker jars (5) - red, purple, aqua, ice blue & lime green - contemporary - all to go
- 480. Water pitcher & 4 goblets - green - contemporary
- 481. Imperial Grape cream & sugar, salt & pepper - smoke - marked IG - all to go
- 482. Contemporary red pieces (4) - all to go
- 483. Contemporary pieces (4) - all to go
- 484. Imperial Grape water carafe - smoke - contemporary
- 485. Poppy Show whimsey top vase - white - contemporary
- 486. Terry Crider signed tumbler - red
- 487. Terry Crider signed tumbler - red
- 488. Terry Crider signed Wreath Cherry tumbler - aqua opal
- 489. Terry Crider signed Chrysanthemum tumbler - aqua opal
- 490. Terry Crider signed Chrysanthemum tumbler - blue opal
- 491. Contemporary tumblers (4) - all to go
- 492. Contemporary pcs (3) - green - all to go
- 493. Contemporary pcs (5) - blue & blue opal - all to go
- 494. Tiger Lily tumbler whimsies (2) - white - marked IG - both to go
- 495. Contemporary spittoon - white
- 496. Contemporary spittoon - blue
- 497. 1982 NCCC Inverted Strawberry spittoon - amethyst
- 498. 1982 (2), 1983 (2) PNWCC Fisherman's mugs - all to go
- 499. Contemporary pcs (3) - all to go
- 500. Contemporary tumblers (5) & goblet - all to go
- 501. Contemporary toothpicks (5), pickle dish in amberina w/Imperial Cross mark & Marathon pig bank - all to go
- 502. Contemporary pcs (7) - all to go
- 503. Lot of Carnival Glass books - all to go

- 166. Pillin 4" vase, two women, horse & bird, 4 1/2" diameter
- 167. Pillin 5 1/2" square tray, woman playing mandolin by moon, signed Pillin in front
- 168. Pillin 17" large bulbous vase, woman playing flute w/ another woman & 2 dancers
- 169. Pillin 3 3/8" small round dish, three cats
- 170. Pillin 11 1/2" vase, woman & horse
- 171. Pillin 10" ewer, woman w/fish, handle has been restored
- 172. Pillin 10 1/2" cylinder vase, woman & dancer, restoration to top edge
- 173. Pillin 5 1/4" square tray, woman, cat & moon
- 174. Pillin 10" vase, woman holding bird & horse
- 175. Pillin 15" x 10 3/4" tray or centerpiece, woman with woman riding horse
- 176. Pillin 6" triangular shaped vase, woman with bird w/2 horses
- 177. Pillin 4" round cvd box, two cats
- 177a. Pillin 3" x 2 1/2" pendant, woman holding balloon
- 178. Pillin 14" vase, boy on horse & 2 other women
- 179. Pillin 10 1/4" round tray, woman holding bird & boy w/ kite, slight restoration on edge
- 180. Pillin 18" x 13" painting, "Figure in Autumn", oil on paper of woman w/child, signed Polia Pillin
- 181. Pillin 14 1/2" 7 pc. carafe set, w/hld, woman w/fish in net & boy w/fish on line w/moon, 3 3/8" cups w/women
- 182. Pillin 8" vase, woman holding cat & woman w/birds
- 182a. Pillin 6" oval vase, nude women on front & back
- 183. Pillin 7 1/2" x 4 1/4" plaque, mother cat & kitten, signed Pillin on front, minor glaze flake on top edge
- 184. Pillin 10 1/2" vase, woman riding a horse, another woman & 2 horses, small glaze flake on top edge
- 185. Pillin 8 1/4" round cvd box, two women & boy dancing
- 186. Pillin 6 1/4" triangular shaped bowl or vase, three women
- 187. Pillin 6 1/2" x 7 1/2" tray, two cats
- 188. Pillin 6" vase, woman & 2 birds
- 189. Pillin 10 1/2" square plaque, two women w/birds by tree, signed Polia Pillin on front
- 190. Pillin 16" vase, two women & deer
- 191. Pillin 1968 advertisement, Display at the Tamerlin Gallery at The Balinese Shop, Pasadena
- 192. Book "To The End Of Time" by William Pillin, Poems New & Selected
- 193. Book "Pavanne for a Fading Memory" by William Pillin Poems
- 194. Book "Dance Without Shoes" by William Pillin, A Selection of the Book Club for Poetry
- 195. Book or pamphlet "Theory of Silence", by William Pillin
- 196. Book "Everything Falling" by William Pillin, has color pictures of paintings by Polia
- 197. Book "Passage After Midnight" by William Pillin
- 198. Painting 14 1/2" x 13" "Little Dancer", signed Polia Pillin woman playing mandolin & dancer, signed Polia Pillin