

# BURNS

AUCTION SERVICE

**2 AUCTIONS!!! 2 SATURDAYS!!!**

AUCTION #1

## 2011 NECGA CONVENTION AUCTION

**SATURDAY, SEPTEMBER 10<sup>TH</sup> at 4:00 P.M.**

(preview prior from 2:30 p.m. to 4:00 p.m.)

**FOUR POINTS BY SHERATON**

**99 ERDMAN WAY, LEOMINSTER, MA 01453**

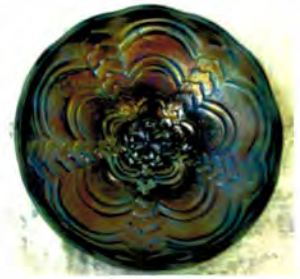
1-978-534-9000



Lot #100



Lot #15



Lot #125

---

AUCTION #2

## 2011 NCCC CONVENTION AUCTION

**SATURDAY, SEPTEMBER 17<sup>TH</sup> at 9:30 A.M.**

(preview prior at 8:00 a.m.)

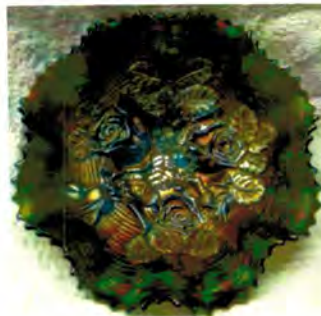
**HOLIDAY INN – AIRPORT**

**5090 EAST CLINTON WAY, FRESNO, CA 93727**

1-559-252-3611



Lot #125



Lot #85



Lot #150

This time we're doing 2 Auctions in 8 days...no big deal – except that they're about 2,500+ miles apart (and I don't FLY!)

The week of September 6<sup>th</sup> through the 10<sup>th</sup> is the Fall Brimfield Flea Market with the New England Carnival Glass Club's 2011 Convention the following weekend. It's a nice get together and this year we have a really nice selection of Glass for you. Lew Marquart from Ohio is their banquet speaker. Contact Don and Kris Dorais for convention information at 401-724-4874.

After spending Sunday, September 11<sup>th</sup> with my granddaughter for birthday #2 (they're soooooo cute at this age), I'll be on my way to Fresno, California for the 2011 Northern California Carnival Club's Annual Convention at the Holiday Inn at the Fresno Airport. Activities start Wednesday evening and I'll be their Luncheon speaker on Friday (poor folks...). Anyway, we're keeping busy. Contact Joan Steskal at 559-642-2805 for further information at the California Convention.

For any other information or to leave mail bids, contact Tom Burns at 407-592-6552.

And remember, all photos and listings of **BOTH** Auctions can be viewed at **necga.com!!!**

- \_\_\_ 1. Lot (4) Hatpins; Big Rooster – I.B., uniridized Honeycomb and Bee, etc. – Misc. (selling choice)
- \_\_\_ 2. 1911 Rochester, NY Shriners Champagne Glass – Clear (nice decoration)
- \_\_\_ 3. Jain (?) Large Right Hand Vase – Cranb. Flash (nice flashed decoration)
- \_\_\_ 4. Higbee Paneled Thistle Stemmed Goblet – Lt. Mari. (rare item to find iridized)
- \_\_\_ **5. IMPERIAL GRAPE STEMMED WINE GLASS – SMOKE (VERY SCARCE EXAMPLE IN THIS COLOR)**
- \_\_\_ 6. (3) Imperial Grape Stemmed Wine Glass – Clamb.; Green; Mari. (selling choice once)
- \_\_\_ 7. (3) Imperial Royalty Handled Punch Cups – Dk. Mari. (selling so much each for set)
- \_\_\_ 8. Imperial Tulip & Cane Stemmed Goblet – Dk. Mari. (scarce; nice dark color)
- \_\_\_ 9. Imperial 474 Stemmed Goblet – Dk. Mari. (scarce; nice color)
- \_\_\_ **10. 4" TALL X 6 1/2 - 7" DIAM. IMPERIAL 474 SQUATTY STEMMED RUFFLED COMPOTE – MARI. (QUITE A SCARCE ITEM TO FIND; TOUGH)**
- \_\_\_ 11. Imperial Star Medallion Stemmed Celery Vase – Mari. (nice color & irid.)
- \_\_\_ 12. Imperial Star Medallion Small sized Tumbler – Mari. (nice color)
- \_\_\_ 13. Set of (6) Imperial Star Medallion Handled Punch Cups – Mari. (selling so much each for set)
- \_\_\_ 14. 9 1/4" Imperial Grape Deep Round Master Berry Bowl – odd Smoke (looks sorta brown – an odd irid. spray)
- \_\_\_ **15. 7 1/2" IMPERIAL HOBSTAR 8 RUFFLED BOWL – BLUE (A BRIGHT BLUE BASE GLASS WITH A RADIUM FINISH; THIS IS THE ONLY EXAMPLE I'VE HEARD OF)**
- \_\_\_ 16. 8" Imperial Interior Smooth Rays 8 Ruffled Bowl – Purp. (super iridized item; really nice)
- \_\_\_ 17. 5 5/8" Imperial Diamond Ring 6 Ruffled Sauce – Purp. (super irid.)
- \_\_\_ 18. 12" Tall x 3 3/8" base Imperial Ripple Swung Vase – Purp. (great color with a really nice irid.)
- \_\_\_ 19. Imperial Embossed Scroll 8 Ruffled Squatty Compote with Curved Star Ext. – Purp. (super color and irid.– nice ex.)
- \_\_\_ **20. 8" IMPERIAL EMBOSSED SCROLL 8 RUFFLED BOWL – EMERALD GREEN (A SUPER BRIGHT GREEN EXAMPLE WITH GREAT IRID.)**
- \_\_\_ **21. 8" IMPERIAL EMBOSSED SCROLL 8 RUFFLED BOWL – AQUA (A RARE BASE COLOR NOT OFTEN FOUND)**
- \_\_\_ **22. 6 3/8" IMPERIAL GRAPE FLAT PLATE – PURP. (SUPER IRID. AND A REALLY NICE EXAMPLE)**
- \_\_\_ 23. 6 1/2" Imperial Grape Flat Plate – Green (scarce item)
- \_\_\_ **24. IMPERIAL CRUCIFIX SINGLE CANDLESTICK – DK. MARI. (RARE & DESIRABLE...IF SOMEONE NEEDS ONE; NICE IRID.)**
- \_\_\_ **25. PAIR 9 1/4" CZECH HOLLOW CANDLESTICKS WITH ENAMELED DECOR. AND PAPER LABEL – AMYTH. (UNUSUAL PAIR WITH NICE DECORATION)**
- \_\_\_ 26. Imperial Jacobin Ladder Rose Bowl – Crystal (never saw a crystal example before)
- \_\_\_ 27. 7 1/2" Maker (?) Open Edge Lattice and Flower Bud Flat Plate – Pastel Mari. (if I had a computer, I'm sure it would tell me what this is)
- \_\_\_ 28. Czech Plain Covered Powder Jar – Satiny Mari. (unusual dresser item)



- \_\_\_29. "Sun Punch" Soda Bottle – Clear/Mari. (very scarce)
- \_\_\_30. Westmoreland Handled Syrup Pitcher with no lid – Dk. Mari. (scarce with great color and irid.)
- \_\_\_31. 6 ¼" Dugan Persian Garden Flared Plate – Mari. (nice satiny finish)
- \_\_\_32. Dugan Puzzle 2 sided Flared 2 Handled Bon Bon – Lt. Mari. (average irid.)
- \_\_\_33. 5 ¾" Tall Dugan Many Ribs JIP Vase – P. Opal. (nice squatty size, nice opal.)
- \_\_\_34. 6" Dugan Thin Rib Spittoon Shaped Vase – P. Opal. (nice opal; nice shape)
- \_\_\_35. **ODD DUGAN VENETIAN LINE SQUARE SHAPED ROUND NECKED BULBOUS VASE – RED (RARE AND DESIRABLE; PERFECT AND IS IN A NEAT SHAPE)**
- \_\_\_36. (3) Dugan Many Fruits Punch Cups (Grapes) – Purp. (selling so much each – really nice)
- \_\_\_37. 8" Dugan Double Stem Rose domed I.C. Shaped Bowl – Amyth. (radium finish)
- \_\_\_38. 7" Dugan Fishscale 6 Ruffled Crimped Edge Bowl – Purp. (nice color and irid.)
- \_\_\_39. 8 ¼" Dugan Dogwood Sprays deep 10 Ruffled domed Bowl – Purp. (scarce shape; really desirable)
- \_\_\_40. **6" DUGAN CHERRIES FLARED CRIMPED EDGE PLATE – PURP. (SCARCE WITH GREAT COLOR)**
- \_\_\_41. **9" DUGAN DOGWOOD SPRAY DOMED 10 RUFFLED BOWL – PURP. (SUPER IRID.; REALLY BRIGHT)**
- \_\_\_42. 10 ½" Dugan Petal & Fan deep 8 Ruffled Bowl with J.H. Ext. – Purp. (very attractive item; tough to find; satiny finish)
- \_\_\_43. N Beaded Cable ftd. Ruffled Rose Bowl – Blue (scarce color; nice)
- \_\_\_44. N Leaf and Beads ftd. Rose Bowl – Dk. Mari. (nice dark color; nice)
- \_\_\_45. **N DAISY & PLUME 3 FTD. RUFFLED ROSE BOWL WITH BERRY INTERIOR – PURP. (SUPER EXAMPLE; VERY ATTRACTIVE)**
- \_\_\_46. N Wild Rose 3 ftd. Candy Dish with Stippled Rays Int. – Dk. Mari. (very scarce; nice dark color; tough)
- \_\_\_47. **N WILD ROSE 3 FTD. CANDY DISH WITH PLAIN INT.– NON-IRIDIZED AMBER (NEVER SEEN THIS ITEM IN THIS COLOR; VERY RARE)**
- \_\_\_48. 9 ½" N Thin Rib Standard Swung Vase – Purp. (nice color; satiny)
- \_\_\_49. 9 ¾" N 4 Pillar Ribbed Swung Vase – Mari. (nice color)
- \_\_\_50. **N IVY TOWN PUMP NOVELTY VASE – PURP. (RARE, VERY DESIRABLE; REALLY NICE EXAMPLE; PERFECT)**
- \_\_\_51. **9" N DRAPERY VARIANT SWUNG VASE – GREEN (VERY RARE COLOR; REALLY NICE)**
- \_\_\_52. 16" Tall N Wide Panel Mid size Swung Vase – Green (nice color; Mari. overlay)
- \_\_\_53. N G&C Candlestick – Purp. (really nice; super example)
- \_\_\_54. **N G&C TUMBLER – HOREHOUND (RARE BASE COLOR; NICE IRID.)**
- \_\_\_55. **N G&C STIPPLED BOWL WITH PCE & RIBBED EXT. – ELEC. BLUE (SUPER EXAMPLE WITH BRIGHT BLUE IRID.)**
- \_\_\_56. N G&C Covered Sweetmeat Compote – Purp. (scarce; nice color and irid.)
- \_\_\_57. N Grape Arbor 6 Ruffled Hat Shape from Tumbler – Blue (rare base color with average irid.)
- \_\_\_58. N Grape and Gothic Arches Handled Spooner – Purp. (very rare base color; nice)
- \_\_\_59. 9 ¾" N Stippled Rays 8 Ruffled Bowl w/ BW Ext. – Purp. (super example)
- \_\_\_60. **8 ¾" N STRAWBERRY STIPPLED 8 RUFFLED BOWL WITH THIN RIB EXT. – PURP. (RARE & DESIRABLE; NICE COLOR AND IRID.)**
- \_\_\_61. **8 ½" N STRAWBERRY STIPPLED BOWL WITH P.C.E. & RIBBED EXT. – MARI. (RARE AND DESIRABLE; A NICE PASTEL FINISH)**
- \_\_\_62. 8 ¾" N Strawberry 8 Ruffled Bowl with Plain Ext.– Purp. (scarce w/ super irid.)
- \_\_\_63. 8 ½" N Strawberry P.C.E. and BW Ext. – Green (nice example with a bright base color)
- \_\_\_64. 8 ¾" N Strawberry with P.C.E. and BW Ext. – Mari. (nice satiny finish)
- \_\_\_65. **9" N STRAWBERRY FLAT PLATE W/ PLAIN EXT. – ODD VIOLET/ LAVENDER (VERY ODD BASE COLOR, GREAT IRID.; NICE)**
- \_\_\_66. 8 ½" N Nippon 8 Ruffled Bowl with BW Ext. – Purp. (nice satiny finish)
- \_\_\_67. 8 ½" N Nippon 8 Ruffled Bowl with BW Ext. – Green (very scarce; nice color and irid.)

- \_\_\_ 68. **8 3/4" N NIPPON 8 RUFFLED BOWL WITH BW EXT. – DK. MARI. SUPER; REALLY TOUGH TO FIND)**
- \_\_\_ 69. **9" N NIPPON PLATE WITH BW EXT. – MARI. (RARE & VERY DESIRABLE; NICE AVERAGE IRID.)**
- \_\_\_ 70. **8 3/4" N NIPPON BOWL WITH P.C.E. AND PLAIN EXT. – ELEC. PURP. (SUPER, SUPER EXAMPLE; NICE ITEM)**
- \_\_\_ 71. **8 3/4" N NIPPON BOWL WITH P.C.E. AND RIBBED EXT. – WHITE (SUPER IRID.; NICE ATTRACTIVE EXAMPLE)**
- \_\_\_ 72. **8 1/2" N NIPPON BOWL WITH DEEP P.C.E. AND BW EXT.–GREEN (SUPER EXAMPLE; NICE COLOR AND IRID.)**
- \_\_\_ 73. **N POPPY RUFFLED RELISH TRAY W/ RIBBED EXT. – WHITE (VERY SCARCE; NICE IRID.; TOUGH)**
- \_\_\_ 74. N Poppy Ruffled Relish Tray w/Ribbed Ext. – Elec. Blue (super irid.; nice)
- \_\_\_ 75. **6 1/4" N FERN BRAND CHOCOLATES FLAT PLATE W/BW EXT.–AMYTH. (RARE & VERY DESIRABLE; EDGE DIDN'T GET FILLED IN)**
- \_\_\_ 76. 8 3/4" N Strawberry Plate with Plain Ext. – Mari. (scarce; nice irid.)
- \_\_\_ 77. 9" N Rainbow Plain Interior Plate with BW Ext. – Mari. (nice satiny finish)
- \_\_\_ 78. 9" N Three Fruits Plate with BW Ext. – Dk. Mari. (nice satiny finish)
- \_\_\_ 79. 8 3/4" N Three Fruits Stippled 8 Ruffled Bowl with Ribbed Ext. – Dk. Mari. (very scarce; nice dark color and irid.)
- \_\_\_ 80. **9" N THREE FRUITS STIPPLED PLATE WITH RIBBED EXT. – DK. MARI. (ANOTHER NICE EXAMPLE; SCARCE AND DESIRABLE)**
- \_\_\_ 81. 8 3/4" Dugan Apple Blossom Twigs Flared Plate with Long Basketweave Ext. – P. Opal. (scarce; nice opal.)
- \_\_\_ 82. 10 1/4" Diam. x 4 1/4" Deep Dugan Persian Garden 10 Ruffled Fruit Bowl Top – Pastel Mari. (nice light colored irid.)
- \_\_\_ 83. Dugan Heavy Iris Tankard Water Pitcher – Mari. (very scarce; nice color and irid.)
- \_\_\_ 84. Fenton Leaf Tiers ftd. Tumbler – Mari.
- \_\_\_ 85. **5 1/2" TALL FENTON DOUBLE DOLPHIN #1532-A STRETCH FTD. FAN VASE – TANGERINE (VERY SCARCE; SCARCE COLOR & IRID.)**
- \_\_\_ 86. Fenton #573 Stretch ftd. 6 Ruffled Vase – Tangerine (another scarce and very desirable item)
- \_\_\_ 87. 5 1/2" Tall Fenton Interior Panel ftd. Fan Vase – Ice Green (nice color and irid.)
- \_\_\_ 88. 7 1/4" Diam x 8" Tall Imperial Stretch Wide Panel Deep Round Stemmed Compote–White (nice frosty color & irid.)
- \_\_\_ 89. Pr. 7" Tall Vineland Bell Shaped Candlesticks – Celeste Blue (nice color and irid.)
- \_\_\_ 90. **FENTON STRETCH #857 LARGE SIZE MELLON RIB FAN VASE – TANGERINE (VERY SCARCE; TOUGH COLOR–VERY DESIRABLE)**
- \_\_\_ 91. **FENTON STRETCH #835 6 RUFFLED COMPOTE – TANGERINE (NICE COLOR; ATTRACTIVE)**
- \_\_\_ 92. Fenton Stretch #835 6 Ruffled Compote – Ice Blue (nice color; scarce)
- \_\_\_ 93. Fenton Stretch #835 6 Ruffled Compote–Ice Green (nice color; scarce)
- \_\_\_ 94. Fenton Stretch #318 Single Squatty Candlestick–Tangerine (tough if ya need it)
- \_\_\_ 95. **(3) FENTON ROSE SPRAY JIP STEMMED COMPOTES – CELESTE BLUE, ICE GREEN, WHITE (SELLING CHOICE; VERY SCARCE)**
- \_\_\_ 96A. **(2) 8 1/2" IMPERIAL STRETCH WIDE PANEL PLATES – RED (NICE DARK COLOR)**
- \_\_\_ 96b. Set of (6) 8 1/2" Imperial Stretch Wide Panel Plates – Wisteria (selling so much each for set)
- \_\_\_ 97. Fenton #107 Stretch Cupped in Rose Bowl – Wisteria (scarce color and size)
- \_\_\_ 98. Fenton Stretch #10 Candy Jar base only – Tangerine (scarce; nice color)
- \_\_\_ 99. 4 1/2" x 6" U.S. Glass Stretch #310 Flared Compote – Amber (scarce color)
- \_\_\_ 100. **9" FENTON CHERRY CHAIN PROTOTYPE I.C. SHAPED BOWL – BLUE/ ELEC. BLUE (ONE OF A KIND FENTON RARITY; GREAT COLOR; GREAT IRID.; HAS NO BACKGROUND PATTERN– NEVER SEEN BEFORE!)**
- \_\_\_ 101. Fenton Two Flowers Spatula ftd. Rose Bowl – Blue (scarce; nice color & irid.)
- \_\_\_ 102. Fenton Butterflies 2 Handled 4 sided Bon Bon – Dk. Mari. (dark satiny finish)
- \_\_\_ 103. (3) Fenton Lattice and Grape Tumblers – Dk. Mari. (super color and irid.; selling so much each for set)

- \_\_\_ 104. Fenton Kittens 2 sided Banana Dish – Dk. Mari. (scarce; nice color)
- \_\_\_ **105. FENTON BUTTERFLY & BERRY 7 PC. WATER SET–BLUE (VERY SCARCE & VERY DESIRABLE SET)**
- \_\_\_ 106. Fenton Orange Tree Scroll Tumbler – Blue (scarce; goldish highlights)
- \_\_\_ 107. Fenton Orange Tree Scroll Tankard Water Pitcher – Blue (damaged but desirable)
- \_\_\_ 108. 1971 Limited Edition Plate with Sitting Liberty Made for “Collectors Weekly” – Lt. Mari. (never seen this newer novelty item)
- \_\_\_ 109. “Pierce; Buffalo, NY Pat’d May ‘78”/ Eagle on Shield Bird Cage Feeder – Lt. Mari. (what?!?... are you kidding me? Find another!)
- \_\_\_ **110. 9” FENTON DRAGON AND STRAWBERRY LG. I.C. SHAPED BOWL – BLUE (RARE AND VERY DESIRABLE; SUPER ITEM)**
- \_\_\_ **111. 9 ½” FENTON DRAGON AND STRAWBERRY LG. 8 RUFFLED 3 FTD. BOWL – GREEN (VERY RARE & VERY DESIRABLE; SUPER ITEM)**
- \_\_\_ **112. 9 ½” FENTON DRAGON AND STRAWBERRY LG. 8 RUFFLED 3 FTD. BOWL – DK. MARI. (VERY RARE & DESIRABLE; NICE ITEM)**
- \_\_\_ **113. 10” FENTON TEN MUMS LG. 6 RUFFLED BOWL – AMYTH. (SUPER IRID.; GREAT COLOR & IRID.; NICE)**
- \_\_\_ **114. 10” FENTON TEN MUMS LG. 6 RUFFLED BOWL – BLUE (TOUGH ITEM; NICE COLOR AND IRID.)**
- \_\_\_ **115. 9 ¾” FENTON TEN MUMS 3 FTD. BOWL WITH 3 IN 1 EDGE – GREEN (RARE AND VERY DESIRABLE)**
- \_\_\_ **116. 9 ¾” FENTON TEN MUMS 3 FTD. BOWL WITH 3 IN 1 EDGE – MARI. (RARE & VERY DESIRABLE; NICE)**
- \_\_\_ 117. Fenton Orange Tree Handled Loving Cup – Green (very scarce; perfect with average color)
- \_\_\_ 118. N’wood Stretch Single 6 Paneled Candlestick and N’wood Stretch Single “Florentine” Style Candlestick – Celeste Blue (both have nice color)
- \_\_\_ 119. Dugan Handled Beaded Basket – Purp. (rare and desirable; nice color and irid.)
- \_\_\_ **120. 8 ½” DUGAN PONY 10 RUFFLED BOWL – ICE GREEN (RARE AND VERY DESIRABLE; GREAT IRID. AND STRETCH EFFECT; NICE!)**
- \_\_\_ **121. 8 ½” DUGAN PONY 6 RUFFLED BOWL – AQUA (VERY RARE BASE COLOR NOT OFTEN FOUND)**
- \_\_\_ 122. 8 ½” Dugan Pony 6 Ruffled Bowl – Amyth (scarce base color; nice satiny finish)
- \_\_\_ 123. 8 ¼” Dugan Pony 6 Ruffled Bowl – Mari. (satiny finish)
- \_\_\_ 124. 5 ¼” Tall x 5 ¼ - ½” Dugan Lined Lattice Squatty Flared Vase – Pastel Mari. (sorta tough item with a pastel finish)
- \_\_\_ **125. 5 ½” – 6” M’BURG ROSILAND ICE CREAM SHAPED SAUCE – BLUE (EXTREMELY RARE ITEM IN THIS SHAPE AND COLOR; NO ONE’S HEARD OF ANOTHER; SATINY FINISH)**
- \_\_\_ **126. 7 ¾” TALL X 9” DIAM. CAMBRIDGE INVERTED THISTLE LG. 8 RUFFLED COMPOTE – GREEN (SUPER RARE WITH SUPER COLOR AND IRID.; REALLY NICE)**
- \_\_\_ **127. CAMBRIDGE LG. SIZE BUZZ SAW CRUET WITH STOPPER – MARI. (RARE & VERY DESIRABLE; NICE)**
- \_\_\_ **128. CAMBRIDGE LG. SIZE BUZZ SAW CRUET WITH STOPPER – GREEN (RARE AND VERY DESIRABLE; TOUGH SIZE; CHIP ON STOPPER)**
- \_\_\_ **129. CAMBRIDGE SMALL SIZE BUZZ SAW CRUET WITH STOPPER – GREEN (VERY SCARCE AND VERY DESIRABLE; NICE)**
- \_\_\_ **130. IMPERIAL THUMBPRINT & OVALS VASE–PURP. (SUPER COLOR & IRID.)**
- \_\_\_ **131. IMPERIAL THUMBPRINT AND OVALS VASE – DK. MARI. (VERY SCARCE; NICE COLOR & IRID.)**
- \_\_\_ 132. Imperial Heavy Grape Flat Plate – Mari. (bright irid.)
- \_\_\_ 133. 16 ¼” Tall x 4 1/8” Base Fenton Rustic Midsize Swung Vase – Amyth. (satiny finish)
- \_\_\_ 134. 16” Tall x 4 1/8” Base Fenton Rustic Midsize Swung Vase – Mari. (satiny finish; check in base)
- \_\_\_ **135. FENTON BUTTERFLY AND BERRY LG. FTD 8 RUFFLED MASTER BERRY BOWL – ELEC. BLUE (SUPER, SUPER COLOR AND IRID.; REALLY NICE)**
- \_\_\_ 136. Fenton Stag and Holly Lg. ball ftd. Giant Rose Bowl – Mari. (very scarce and very desirable – tough)



- \_\_\_ 137. Fenton Vintage Grape Stemmed 6 Ruffled Compote – Green (nice satiny finish)
- \_\_\_ 138. N Beaded Cable ftd. Rose Bowl with Ribbed Int. – Lt. Amyth. (sorta pastel; odd)
- \_\_\_ 139. N Beaded Cable ftd. Rose Bowl with Ribbed Int. – Amyth. (satiny finish)
- \_\_\_ 140. N Grape Arbor Tumbler – White (very scarce; nice example)
- \_\_\_ 141. (3) N Raspberry Tumblers – Purp. (selling so much each for set)
- \_\_\_ 142. (2) N Raspberry Tumblers – Mari. (selling so much each for pair)
- \_\_\_ 143. 7 ¼" Tall Dugan Vining Twigs Swung Vase – White (scarce, frosty; nice item)
- \_\_\_ 144. N Fine Cut and Roses ftd. Rose Bowl – Amyth. (satiny finish)
- \_\_\_ **145. 9" N EMBROIDERED MUMS FLARED PLATE WITH PLAIN EXT. – WHITE (EXTREMELY RARE; STILL THE ONLY ONE KNOWN)**
- \_\_\_ **146. 9" N EMBROIDERED MUMS FLARED PLATE WITH RIBBED EXT. – ICE GREEN (RARE AND VERY DESIRABLE; NICE IRID.)**
- \_\_\_ **147. 8 ¾" N EMBROIDERED MUMS 8 RUFFLED BOWL WITH RIBBED EXT.–ICE GREEN (RARE & VERY DESIRABLE; NICE COLOR & IRID.)**
- \_\_\_ **148. 8 ¾" N EMBROIDERED MUMS 8 RUFFLED BOWL WITH PLAIN EXT. – ICE BLUE (RARE & DESIRABLE; NICE PASTEL FINISH)**
- \_\_\_ **149. 8 ¾" N EMBROIDERED MUMS 8 RUFFLED BOWL WITH RIBBED EXT. – DK. PURP. (DARK COLOR WITH A NICE MULTI-COLORED FINISH)**
- \_\_\_ **150. 8 ½" N EMBROIDERED MUMS 8 RUFFLED BOWL WITH RIBBED EXT. – HOREHOUND (VERY RARE AND VERY DESIRABLE; ODD BASE COLOR!)**
- \_\_\_ **151. 8 ½" N EMBROIDERED MUMS 8 RUFFLED BOWL WITH RIBBED EXT. – PASTEL MARI. (SORTA LIGHT BASE COLOR WITH A BRIGHT IRID.)**
- \_\_\_ **152. 8 ½" N HEART AND FLOWERS BOWL WITH P.C.E. AND RIBBED EXT. – MARI./PASTEL MARI. (VERY SCARCE AND VERY DESIRABLE; NICE IRID.)**
- \_\_\_ 152a. Hearts and Flowers 8 Ruffled Bowl with Ribbed Ext.–White (scarce; very desirable)
- \_\_\_ 153. N'wood Concave Diamond Tumbler – Celeste Blue (nice color)
- \_\_\_ 154. N G & C Tumbler – Green (super irid.)
- \_\_\_ **155. 10" N WISHBONE CHOP PLATE WITH BASKETWEAVE EXT. – PURP. (RARE AND VERY DESIRABLE; NICE BRIGHT SATINY FINISH)**
- \_\_\_ **156. 9 ½" N WISHBONE BOWL WITH P.C.E. AND BASKETWEAVE EXT. – GREEN (RARE AND DESIRABLE; NICE BRIGHT HIGHLIGHTS)**
- \_\_\_ 157. 9 ¼" N Wishbone Bowl with P.C.E. and Basketweave Ext. – Mari. (nice dark satiny finish)
- \_\_\_ 158. N Wishbone ftd. 8 Ruffled Bowl with Ruffles and Rings Ext. – Amyth. (nice satiny finish)
- \_\_\_ 159. N Wishbone ftd. 8 Ruffled Bowl with Ruffles and Rings Ext. – Mari. (nice satiny finish)
- \_\_\_ **160. N WISHBONE FTD. 8 RUFFLED BOWL WITH RUFFLES AND RINGS EXT. – ELEC. BLUE (ABSOLUTELY SUPER ITEM WITH GREAT IRID.)**
- \_\_\_ **161. N WISHBONE FTD. TRI-CORNERED BOWL WITH RUFFLES AND RINGS EXT. – DK. MARI. (VERY RARE SHAPE WITH GREAT COLOR AND IRID.)**
- \_\_\_ **162. N WISHBONE FTD. FLARED PLATE WITH RUFFLES AND RINGS EXT. – AMYTH. (RARE & VERY DESIRABLE; SATINY FINISH)**
- \_\_\_ **163. N WISHBONE FTD. FLARED PLATE WITH RUFFLES AND RINGS EXT. – MARI. (VERY RARE & DESIRABLE; NICE SATINY FINISH)**
- \_\_\_ 164. Imperial Diamond Lace Tumbler – Purp. (super irid.)
- \_\_\_ 165. Imperial NuArt Style Paneled Stretch Shade – Dk. Mari. (great color & irid.)
- \_\_\_ 166. 10 ¼" Imperial 4 ftd. Stretch Console Bowl – Mari. (nice color and irid.)
- \_\_\_ 167. 8 ¾" Imperial Stretch Cupped Ice Cream Shaped Bowl – White (great color and irid.)
- \_\_\_ 168. Unusual Set of (6) Paneled Parfaits – Mari. (selling so much each for set)
- \_\_\_ 169. 5" Plain Panel Deep Round Bowl signed Heisey – Mari.
- \_\_\_ 170. 1960's FDR Flask in Original Box from Wheaton Museum Monmouth, NJ – Green (unusual)

Auction #2

# 2011 NCCC CONVENTION AUCTION

SATURDAY, SEPTEMBER 17<sup>TH</sup> at 9:30 A.M.

(preview prior at 8:00 a.m.)

HOLIDAY INN – AIRPORT

5090 EAST CLINTON WAY, FRESNO, CA 93727

1-559-252-3611

- |   |  |
|---|--|
| <p>___ 1. Pastel Swan Master Salt – Blue Opal. (non carnival item; scarce)</p> <p>___ 2. N’wood Novelty Corn Husk Vase – Vaseline Opal. (non carnival item; very scarce with nice opal.)</p> <p>___ 3. N’wood Novelty Corn Husk Vase – Blue Opal (non carnival item/nice color &amp; opal)</p> <p>___ 4. N’wood Novelty Corn Husk Vase – Clear Opal. (non carnival item; scarce with nice opal)</p> <p>___ 5. N 4 Pillar Ribbed Swung Vase – Vaseline Opal. (non carnival item; rare color; chip on a foot)</p> <p>___ 6. Late Fenton Hobnail Carnival Small sized Cruet and Stopper – Aqua Opal. (really attractive item)</p> <p>___ 7. Sowerby Swan Covered Butter Dish – Mari. (scarce; nice color and irid.)</p> <p>___ 7a. Sowerby Swan Covered Butter Dish – Blue (scarce; nice color)</p> <p>___ 8. Fostoria Brocaded Acorn Stemmed Champagne Glass – Ice Blue (rare and desirable item)</p> <p>___ 9. (2) odd Perfume Bottles – (1) Mari. Flash, (1) Cranb. Flash (selling so much each for pair)</p> <p>___ 10. Pr. of 10 ¼” Tall N’wood Stretch 6 Paneled Candlesticks – Celeste Blue (very scarce; nice)</p> <p>___ 11. Fenton Stretch 3 pc. Console Set – Celeste Blue (scarce; a nice set)</p> <p>___ 12. N’wood Stretch 3 pc. Console Set – Blue Opaque (very scarce set; nice color)</p> <p>___ 13. N’wood Paneled Covered Candy Dish – Russet Green (scarce; nice color)</p> <p>___ 14. Fenton Stemmed Perfume Bottle and Stopper – Celeste Blue (rare item with nice color; stopper cut short)</p> <p>___ 15. <b>DUGAN THUMBPRINT STEMMED 8 RUFFLED COMPOTE – ICE GREEN VERY RARE &amp; VERY DESIRABLE; GREAT COLOR &amp; STRETCH EFFECT</b></p> | <p>___ 16. Imperial Plain Jane Handled Flower Basket – Teal (scarce color)</p> <p>___ 16a. Imperial Plain Jane Handled Flower Basket – Smoke (nice color)</p> <p>___ 17. Imperial Plain Jane Handled Flower Basket – Clamb. (nice irid.)</p> <p>___ 18. Pr. Imperial Paneled Bell Shaped Candlesticks – Mari. (nice color &amp; irid.)</p> <p>___ 19. Imperial Paneled Bell Shaped Single Candlestick – Smoke (rare single stick)</p> <p>___ <b>20. 12” TALL IMPERIAL PARLOR PANELS SWUNG VASE – PURP. (ABSOLUTELY SUPER COLOR AND IRID.)</b></p> <p>___ <b>21. 9 ½” TALL IMPERIAL BEADED BULLSEYE SQUATTY SWUNG VASE – PURP. (SUPER COLOR AND IS A GREAT COLOR)</b></p> <p>___ 22. 9 ½” Tall Imperial Ripple odd Swung Vase – Purp. (super odd swung shape with super irid.)</p> <p>___ 23. 8 ¾” Tall Imperial Ripple Standard Swung Vase – odd Amyth. (super odd item; nice irid.)</p> <p>___ 24. 9” Tall Imperial Beaded Bullseye Swung Vase – Helios Green (nice color)</p> <p>___ 25. 8” Tall Imperial Miniature Morning Glory Swung Vase – Purp. (nice color and irid.)</p> <p>___ 26. 8” Tall Imperial Miniature Morning Glory Swung Vase – Smoke (nice color and irid.)</p> <p>___ 27. Pr. 7” Tall Imperial Chesterfield (?) Candlesticks – Dk. Mari. (super color and irid.)</p> <p>___ 28. Imperial Diamond Lace Tumbler – Purp. (super irid.)</p> <p>___ 29. Imperial Chatelaine Tumbler – Purp. (rare &amp; desirable; roughness on base)</p> <p>___ <b>30. IMPERIAL WINDMILL TUMBLER – PURP. (ABSOLUTELY SUPER COLOR AND IRID.; GREAT DETAIL)</b></p> <p>___ 31. Fenton Strawberry Scroll Tumbler – Dk. Mari. (as is, but nice)</p> |
|---|--|

- \_\_\_32. Dugan Dahlia Tumbler – Amyth. (scarce; nice bright satiny finish)
- \_\_\_33. N Wishbone Tumbler – Purp. (only avg.)
- \_\_\_34. N G & C Tumbler – Purp. (really nice example)
- \_\_\_35. **N G & C TUMBLER – HOREHOUND (RARE & VERY DESIRABLE COLOR)**
- \_\_\_36. (Maker?) Primrose and Fishnet Cylinder Vase – Red (non iridized item; very scarce)
- \_\_\_37. (2) Fenton Fine Rib Mid size Swung Vases – (1) 18" Blue; (1) 17 ¼" Dk. Green (both are non iridized and unusual)
- \_\_\_38. 10 ½" N Diamond Point Swung Vase – Blue Opal. (non carnival)
- \_\_\_39. 10" N Diamond Point Swung Vase – Clear Opal. (non carnival)
- \_\_\_40. **10" N DIAMOND POINT SWUNG VASE – PURP. (VERY DESIRABLE WITH BLUE HIGHLIGHTS)**
- \_\_\_41. 10 ½" N Tree Trunk Standard Swung Vase – Blue/Elec. Blue (very desirable; really nice color and irid.)
- \_\_\_42. 10 ½" N Tree Trunk Standard Swung Vase – Sapphire (rare and very desirable base color; has manuf. Check in body)
- \_\_\_43. 8" Imperial Grape low 8 Ruffled Bowl – Purp. (super irid.; nice color)
- \_\_\_44. 6 ½" Dugan Fishscale and Beads 6 Ruffled Crimped Edge Bowl – Purp. (nice color and irid.)
- \_\_\_45. **IMPERIAL POPPY SHOW VASE – TEAL GREEN (AN ODD COLORED EXAMPLE; NON IRIDIZED)**
- \_\_\_46. **U.S. GLASS COSMOS AND CANE STEMMED SPITTOON SHAPED WHIMSEY – MARI. (RARE AND DESIRABLE SHAPE WITH BRIGHT HIGHLIGHTS)**
- \_\_\_47. Westmoreland Corinth JIP Vase – Mari./Moonstone (nice color and irid.)
- \_\_\_48. Westmoreland Orange Peel Stemmed Sherbet – P. Opal. (very unusual item; haven't seen many)
- \_\_\_49. 8" Westmoreland Corinth IC Shaped Bowl – P. Opal. (nice color and irid.)
- \_\_\_50. 8 ½" Westmoreland Scales 6 Ruffled Bowl – Blue Opal. (scarce; average color and opal.)
- \_\_\_51. 8 ½" Westmoreland Scales 6 Ruffled Bowl – Dk. Mari./Milk Glass (scarce; nice color and irid.)
- \_\_\_52. 8 ½" Westmoreland Smooth Ray 6 Ruffled Bowl – Blue Opaque (scarce color)
- \_\_\_53. 8 ½" Westmoreland Smooth Ray 6 Ruffled Bowl – Blue Opal. (scarce color)
- \_\_\_54. 8 ½" Westmoreland Smooth Ray 6 Ruffled Bowl – Mari./Milk Glass (scarce color)
- \_\_\_55. **N PEACOCK AT THE FOUNTAIN PUNCH BOWL AND BASE – ICE BLUE (EVEN "AS IS" THIS IS VERY DESIRABLE; BASE PERFECT; TOP HAS ONE POINT BROKEN OFF)**
- \_\_\_56. N Three Fruits Medallion Spatula ftd. 8 Ruffled Bowl with Meander Ext. – Ice Blue (very scarce; open bubble on one foot)
- \_\_\_57. **N PEACOCK AT THE URN LG. ICE CREAM BOWL – ICE GREEN (RARE & VERY DESIRABLE; NICE COLOR & IRID.)**
- \_\_\_58. **N PEACOCKS 8 RUFFLED BOWL WITH RIBBED EXT. – ELEC. BLUE (SUPER COLOR & GREAT IRID.)**
- \_\_\_59. **N PEACOCKS BOWL WITH PCE AND RIBBED EXT. – PURP. (VERY SCARCE; NICE COLOR AND SATINY IRID.)**
- \_\_\_60. Dugan Heavy Iris Tankard Water Pitcher – Mari. (very scarce; nice bright color and irid.)
- \_\_\_61. 8 ½" Dugan Apple Blossom Twig low Ruffled Plate – Blue (very scarce; dark color with a satiny finish)
- \_\_\_62. 9 ¼" Dugan Apple Blossom Twig low Ruffled Plate – White (scarce; super irid.)
- \_\_\_63. 12 ½" Dugan Intaglio Fruit Exterior 2 sided Fruit Bowl – Clear/Blue Stain (uniridized; exterior to the heavy web bowl)
- \_\_\_64. 11 ½" Dugan Persian Garden Lg. Ice Cream Bowl – White (epoxied point)
- \_\_\_65. **11" TALL N DIAMOND POINT SWUNG VASE – ICE BLUE (RARE & VERY DESIRABLE; NICE COLOR & IRID.)**
- \_\_\_66. N Springtime Master Berry Bowl – Purp. (very scarce item; nice color)
- \_\_\_67. 8" N G& C Handgrip Plate with Basketweave Ext. – Amyth. (scarce; nice satiny finish)
- \_\_\_68. N Beaded Cable ftd. Rose Bowl – Mari. (nice color and irid.)
- \_\_\_69. N Fine Cut and Roses ftd. Rose Bowl – Custard/Nutmeg



- \_\_\_ 70. **M'BURG PEACOCK FLARED MASTER BERRY BOWL – AMYTH. (RADIUM & VERY DESIRABLE; NICE)**
- \_\_\_ 71. Imperial Waffle Block Handled Flower Basket – Clamb. (nice irid.)
- \_\_\_ 72. (2) 7 ¾" Tall Imperial Ripple Swung Vases – Amber (really nice example; super color; selling choice)
- \_\_\_ 73. 14" Tall x 4" Base Imperial Ripple mid size Swung Vase – Mari. (nice dark color)
- \_\_\_ 74. Westmoreland Louisa ftd. Rose Bowl – Aqua (nice example)
- \_\_\_ 75. **N GOOD LUCK FLARED PLATE WITH BASKETWEAVE EXT. – PURP. (RARE AND VERY DESIRABLE; SUPER IRID.; REALLY NICE)**
- \_\_\_ 76. **N HEARTS AND FLOWERS 8 RUFFLED BOWL WITH BASKETWEAVE EXT. – PURP. (VERY SCARCE AND VERY DESIRABLE; NICE IRID.)**
- \_\_\_ 77. **N HEARTS AND FLOWERS BOWL WITH PCE AND RIBBED EXT. – DK. MARI. (RARE AND VERY DESIRABLE; NICE COLOR & IRID.)**
- \_\_\_ 78. N Hearts and Flowers Stemmed Compote with Ribbed Ext. – Mari. (very scarce; nice dark color and irid.)
- \_\_\_ 79. **N HEARTS AND FLOWERS STEMMED COMPOTE WITH RIBBED EXT. – AQUA/BLUE OPAL. (ODD DARK BLUE BASE COLOR; REALLY NICE)**
- \_\_\_ 80. **N HEARTS AND FLOWERS 8 RUFFLED BOWL WITH RIBBED EXT. – GREEN (VERY RARE BASE COLOR WITH GREAT IRID.)**
- \_\_\_ 81. **N HEARTS AND FLOWERS 8 RUFFLED BOWL WITH RIBBED EXT. – ICE GREEN (RARE AND VERY DESIRABLE; NICE IRID.)**
- \_\_\_ 82. **N HEARTS AND FLOWERS 8 RUFFLED BOWL WITH RIBBED EXT. – DK. MARI. (SUPER COLOR AND VERY DESIRABLE; NICE)**
- \_\_\_ 83. N Hearts and Flowers 8 Ruffled Bowl with Ribbed Ext. – White (nice frosty finish with nice irid.)
- \_\_\_ 84. N Strawberry Stippled 8 Ruffled Bowl with Ribbed Ext. – Purp. (scarce with nice irid.)
- \_\_\_ 85. **N ROSE SHOW VARIANT 8 RUFFLED BOWL W/ RIBBED EXT. – BLUE (RARE & VERY DESIRABLE; GREAT BASE COLOR WITH NICE MULTI-COLORED IRID.)**
- \_\_\_ 86. **N PEACOCKS 8 RUFFLED BOWL WITH RIBBED EXT. – AQUA OPAL. (RARE & DESIRABLE; NICE OPAL.)**
- \_\_\_ 87. **N PEACOCKS 8 RUFFLED BOWL WITH RIBBED EXT. – BLUE (RARE & DESIRABLE; NICE COLOR & IRID.)**
- \_\_\_ 88. **N CORN VASE WITH STALK BASE – ICE GREEN (VERY SCARCE; NICE COLOR AND IRID.; DESIRABLE)**
- \_\_\_ 89. **N FINE CUT AND ROSES FTD. CANDY DISH WITH FANCY INT. – AQUA OPAL. (VERY SCARCE WITH NICE COLOR AND OPAL.)**
- \_\_\_ 90. **N DANDELION MUG – AQUA OPAL. (NICE EXAMPLE; GREAT IRID. – DESIRABLE)**
- \_\_\_ 91. (2) N Singing Birds Tumblers – Green (2 different examples; selling choice)
- \_\_\_ 92. N Fruit and Flowers Stemmed Handled Bon Bon – Elec. Blue (super irid. and very scarce; nice)
- \_\_\_ 93. N (or Fenton) Fruit and Flowers Stemmed Handled Bon Bon – Purp. (odd round shape; probably not too old)
- \_\_\_ 94. 6" M'burg Peacock Flared ind. Berry Bowl – Amyth. (radium finish)
- \_\_\_ 95. 6 ¾" Imperial Shell Deep 8 Ruffled Bowl – Smoke (super color and irid.)
- \_\_\_ 96. Imperial Pansy One Handled Nappy – Helios Green
- \_\_\_ 97. Dugan Nautilus Novelty Open Sugar – signed Northwood in script – P. Opal. (nice example; great color and signed)
- \_\_\_ 98. Dugan Six Petals 6 Ruffled Bowl – P. Opal. (super color and opal.)
- \_\_\_ 99. Dugan Stork in the Rushes Tumblers with Beaded Top – Blue (nice irid.)
- \_\_\_ 100. **FENTON 2 ROW OPEN EDGE 2 SIDED HAT – RED (SATINY; DARK IRID.)**
- \_\_\_ 101. Fenton 2 Row 6 Ruffled Hat – Blue (satiny)
- \_\_\_ 102. Fenton Holly 4 sided Hat with manuf. ground base – Blue (nice color & irid.)
- \_\_\_ 103. (2) Fenton 2 Row Open Edge 6 Ruffled and 2 sided Hats – Mari. (selling 2x the money)
- \_\_\_ 104. Fenton 2 Row Open Edge 6 Ruffled Hat – Aqua (nice base color)

- \_\_\_ 105. **8 1/2" FENTON LARGE 3 ROW IC SHAPED OPEN EDGE BOWL – CELESTE BLUE (RARE & VERY DESIRABLE; GREAT COLOR & SHAPE)**
- \_\_\_ 106. **8 1/2" FENTON LARGE SIZE 3 ROW OPEN EDGE ICE CREAM SHAPED BOWL – WHITE (RARE AND VERY DESIRABLE; TOUGH ITEM)**
- \_\_\_ 107. **FENTON 2 ROW LARGE SIZE 4 SIDED OPEN EDGE HAT – ICE GREEN (RARE AND VERY DESIRABLE; GREAT COLOR AND IRID.)**
- \_\_\_ 108. Fenton 2 Row 2 sided Hat with John H. Brand Furniture; Wilmington, Del. – Mari. (scarce; nice)
- \_\_\_ 109. **FENTON LARGE SIZE 3 ROW 4 SIDED OPEN EDGE HAT – CELESTE BLUE (RARE & VERY DESIRABLE; GREAT COLOR AND IRID.)**
- \_\_\_ 110. **14 3/4" IMPERIAL WIDE PANEL CHOP PLATE – RED (ABSOLUTELY FANTASTIC STRETCH ITEM; GREAT COLOR)**
- \_\_\_ 111. **11 1/4" IMPERIAL WIDE PANEL LARGE PLATE – RED (SUPER COLOR AND IRID.; REALLY NICE)**
- \_\_\_ 112. **8 1/2" IMPERIAL WIDE PANEL FLAT PLATE – RED (SUPER COLOR AND IRID.; CHIPPED ON EDGE)**
- \_\_\_ 113. **(3) 8" IMPERIAL WIDE PANEL FLAT PLATES–RED (VERY SCARCE; SELLING 3X THE MONEY)**
- \_\_\_ 114. **7 1/2" FENTON STRETCH CUPPED IN BOWL– RED (VERY DESIRABLE; NICE COLOR AND IRID.)**
- \_\_\_ 115. **8 1/4" TALL FENTON LARGE FLARED VASE – RED (RARE AND VERY DESIRABLE; NICE COLOR)**
- \_\_\_ 116. **11 1/2" TALL IMPERIAL INTERIOR WIDE PANEL SWUNG VASE – RED (RARE AND VERY DESIRABLE; BRIGHT IRID.)**
- \_\_\_ 117. **6" FENTON CUPPED IN ROSE BOWL – RED (VERY SCARCE; NICE COLOR)**
- \_\_\_ 118. (5) 8" Imperial Wide Panel Plates – Teal (scarce color; selling so much each)
- \_\_\_ 119. 8 1/4" Imperial Wide Panel Deep Round Flared Bowl – teal (scarce; nice color)
- \_\_\_ 120. **14" IMPERIAL INTERIOR WIDE PANEL MID SIZE OR FUNERAL VASE – SMOKE (SUPER BRIGHT COLOR AND IRID.)**
- \_\_\_ 121. 8 1/2" Imperial Hattie Round Flared Bowl – Smoke (very scarce with super irid.; nice)
- \_\_\_ 122. 9 1/2" Imperial Diamond Lace Lg. 8 Ruffled Bowl – Purp. (super color & irid.)
- \_\_\_ 123. 7 3/4" Imperial Embossed Scroll Deep 8 Ruffled Bowl with File Ext. – Purp. (large chip)
- \_\_\_ 124. **9" IMPERIAL EMBOSSED SCROLL FLAT PLATE – PURP. (RARE AND DESIRABLE; SUPER COLOR AND IRID.)**
- \_\_\_ 125. **10 1/2" IMPERIAL LUSTRE ROSE LG. 3 FTD. ROUND FLARED FRUIT BOWL – PURP. (ABSOLUTELY SUPER & VERY RARE; GREAT COLOR AND IRID.)**
- \_\_\_ 126. **10 3/4" IMPERIAL GRAPE LG. 8 RUFFLED MASTER BERRY BOWL – BLUE (RARE AND VERY DESIRABLE; BRIGHT IRID.)**
- \_\_\_ 127. **11" IMPERIAL GRAPE LG. 8 RUFFLED MASTER BERRY BOWL – ELEC. AMYTH. (SUPER BRIGHT IRID.; GREAT COLOR)**
- \_\_\_ 128. 8" Imperial Sand and Shell Deep 8 Ruffled Bowl – Elec. Purp. (super color and irid.; great item)
- \_\_\_ 129. 8" Imperial Sand and Shell Deep 8 Ruffled Bowl – Dk. Mari. (really nice dark color and irid.)
- \_\_\_ 130. **IMPERIAL 474 PUNCH BOWL AND BASE – EMERALD GREEN (RARE AND VERY DESIRABLE; TOP IS DAMAGED BUT REALLY NICE)**
- \_\_\_ 131. **11" IMPERIAL JEWELS LG. IC SHAPED "FLOAT" BOWL – PURP. (SIGNED IRON CROSS; SUPER COLOR AND IRID.)**
- \_\_\_ 132. Pr. 8 1/4" Diamond Lustre and Clear Bell Shaped Candlesticks – Red (very scarce and desirable pair)
- \_\_\_ 133. 9" Dugan Apple Blossom Twig Flat Plate with Basketweave Ext. – P. Opal. (nice opal.)
- \_\_\_ 134. 9" Dugan Apple Blossom Twig low Ruffled Bowl – P. Opal. (nice opal.)
- \_\_\_ 135. **8 1/4" TALL WESTMORELAND CORINTH SWUNG VASE – BLUE OPAL. (REALLY NICE BASE COLOR)**
- \_\_\_ 136. 8" Westmoreland Corinth IC Shaped Bowl – Blue Opal. (very scarce; nice base color and opal.)

- \_\_\_ 137. 8 1/2" Westmoreland Daisy Wreath 6 Ruffled Bowl – Mari./Milk Glass (very scarce; really nice example)
- \_\_\_ 138. 8 1/2" Westmoreland 270 Stemmed Round Compote – Amyth. (satiny finish)
- \_\_\_ 139. 8 1/2" Westmoreland 270 Stemmed Round Compote – Amber (scarce base color)
- \_\_\_ 140. 8 1/2" Westmoreland 270 Stemmed Round Compote – Mari./Milk Glass (very scarce; very desirable; nice)
- \_\_\_ 141. 8 1/2" Westmoreland 270 Stemmed Round Compote–Blue Opaque (scarce base color)
- \_\_\_ 142. 8 1/2" Westmoreland 270 Stemmed Round Compote – Olive Green (odd base color)
- \_\_\_ 143. 8 1/4" Fenton Captive Rose Bowl with 3 in 1 Edge – Green (satiny finish)
- \_\_\_ 144. 8 1/2" Fenton Chrysanthemum 8 Ruffled Bowl – Mari. (satiny finish)
- \_\_\_ **145. FENTON ORANGE TREE SCROLL TANKARD WATER PITCHER – BLUE (RARE AND VERY DESIRABLE; NICE COLOR AND IRID.)**
- \_\_\_ 146. 10" Fenton Chrysanthemum Lg. ball ftd. IC Shaped Bowl – Blue/Elec. Blue (really nice irid. w/Elec. Blue highlights)
- \_\_\_ **147. 10" FENTON TEN MUMS LG. 6 RUFFLED BOWL– AMYTH. (REALLY NICE; SUPER COLOR AND IRID.)**
- \_\_\_ **148. 9" FENTON HEARTS AND VINE FLAT PLATE – AMYTH. (RARE BASE COLOR WITH NICE IRID.)**
- \_\_\_ 149. 9 1/2" Fenton Hearts and Vine Flat Plate – Blue (very scarce; nice base color and gold highlights)
- \_\_\_ **150. 7 3/4" FENTON "ILLINOIS SOLDIERS AND SAILORS HOME – QUINCY, ILL." FLAT PLATE – BLUE (RARE AND VERY, VERY DESIRABLE; GREAT IRID. AND DETAIL)**
- \_\_\_ **151. 8" FENTON "ILLINOIS SOLDIERS AND SAILORS HOME – QUINCY, ILL." FLAT PLATE – DK. MARI. (SUPER DARK EXAMPLE WITH GREAT COLOR, DETAIL AND IRID.)**
- \_\_\_ **152. 9" FENTON PEACOCK TAIL FLAT PLATE – MARI. (EXTREMELY RARE PLATE IN THIS PATTERN; NICE COLOR AND SATINY IRID.)**
- \_\_\_ **153. 9 1/2" FENTON FEATHER STITCH FLAT PLATE – MARI. (EXTREMELY RARE ITEM IN THE PATTERN)**
- \_\_\_ **154. 7 3/4" FENTON PEACOCK AND DAHLIA FLAT PLATE – MARI. (RARE AND VERY DESIRABLE; NICE SATINY FINISH)**
- \_\_\_ **155. 9" FENTON PLAID LOW FLARED PLATE – AMYTH. (REALLY RARE ITEM IN THIS COLOR; TOUGH ITEM)**
- \_\_\_ 156. 9" Fenton Plaid low Flared Plate – Blue (another really scarce item with color and irid.)
- \_\_\_ 157. 9" Fenton Plaid 8 Ruffled Bowl – Blue (very scarce; nice base color)
- \_\_\_ **158. 8" FENTON PLAID DEEP 8 RUFFLED BOWL – MARI. (VERY SCARCE; NICE COLOR AND IRID.)**
- \_\_\_ 159. 8 1/4" Fenton Plaid Deep IC Shaped Bowl – Mari. (very scarce; nice color and irid.)
- \_\_\_ 160. 8 1/2" Fenton Plaid Deep IC Shaped Bowl – Blue (another nice item; really tough to find)
- \_\_\_ **161. 8" FENTON PLAID DEEP ROUND SALAD BOWL – GREEN (VERY RARE ITEM WITH GREAT COLOR AND IRID.; REALLY NICE)**
- \_\_\_ **162. 9" FENTON PLAID DEEP 8 RUFFLED BOWL – GREEN (ANOTHER RARE SHAPE IN THIS COLOR)**
- \_\_\_ **163. FENTON HOLLY 6 RUFFLED HAT – RED (RARE; DESIRABLE; REALLY NICE ITEM)**
- \_\_\_ 164. 9" Fenton Holly 6 Ruffled Bowl – Clamb. (nice irid.)
- \_\_\_ **165. 9 1/2" FENTON HOLLY FLARED PLATE – GREEN (VERY SCARCE; NICE SATINY FINISH)**
- \_\_\_ 166. 9 1/4" Fenton Holly Flared Plate – Amyth. (very scarce base color; nice average irid.)
- \_\_\_ 167. 9 1/2" Fenton Holly Flat Plate – Blue (scarce; nice color and irid.)
- \_\_\_ 168. 9 1/2" Fenton Holly Flared Plate – Mari. (nice color and irid.)
- \_\_\_ 169. 9 1/2" Fenton Holly Flat Plate – White (very scarce; really nice color and irid.)
- \_\_\_ 170. 9 1/2" Fenton Holly Flat Plate – Clamb. (scarce; nice irid.)
- \_\_\_ **171. 9" FENTON HOLLY 8 RUFFLED BOWL – RED (RARE AND DESIRABLE; NICE BASE COLOR; HAS A SATINY FINISH)**
- \_\_\_ 172. 9" Fenton Holly 8 Ruffled Bowl – Dk. Purp.(Oxblood) (very rare base color; nice)



- \_\_\_ 173. 9" Fenton Holly 8 Ruffled Bowl – Amber (very rare base color; nice finish)
- \_\_\_ 174. 9" Fenton Holly 8 Ruffled Bowl – Green (very scarce and attractive item)
- \_\_\_ **175. 9" FENTON HOLLY 8 RUFFLED BOWL – AQUA (RARE AND DESIRABLE BASE COLOR WITH A MARIGOLD OVERLAY)**
- \_\_\_ 176. 9" Fenton Holly 8 Ruffled Bowl – Dk. Mari. (nice color)
- \_\_\_ **177. 9" FENTON HOLLY 8 RUFFLED BOWL WITH 3 IN 1 EDGE – AQUA (ANOTHER RARE BASE COLORED ITEM IN RARE SHAPE)**
- \_\_\_ 178. 9" Fenton Holly 8 Ruffled Bowl with 3 in 1 Edge – Blue (satiny finish)
- \_\_\_ 179. 9" Fenton Holly IC Shaped Bowl – Mari. (satiny finish)
- \_\_\_ **180. 9 1/2" N WILD STRAWBERRY LG. 8 RUFFLED BOWL WITH BW EXT. – WHITE (RARE AND VERY DESIRABLE WITH GREAT IRID.; NOT TOO MANY KNOWN)**
- \_\_\_ **181. N TORNADO LG. SIZE VASE – GREEN (ALWAYS RARE & VERY DESIRABLE)**
- \_\_\_ 182. (2) N Tornado Standard size Vase – (1) Green (chipped base); (1) Mari. (cracked all to heck) (selling so much for the pair)
- \_\_\_ 183. N Concave Diamond 8 pc. Covered - Celeste Blue (rare and desirable set; perfect with great color)
- \_\_\_ 184. N Thin Rib JIP Jester Cup Vase – Green (very scarce item in this shape & color)
- \_\_\_ **185. 9" TALL N DIAMOND POINT SWUNG VASE – ELEC. BLUE (RARE AND VERY DESIRABLE; GREAT COLOR & IRID.)**
- \_\_\_ 186. Tall N Diamond Point Swung Vase – Green (nice color)
- \_\_\_ 187. Tall N Diamond Point Swung Vase – Purp. (nice color)
- \_\_\_ 188. Tall N Diamond Point Swung Vase – Amyth. (satiny finish)
- \_\_\_ **189. POPPY OVAL RUFFLED RELISH TRAY WITH RIBBED EXT. – ELEC. BLUE (NICE COLOR AND IRID.)**
- \_\_\_ 190. Colonial Loop Chalice – Elec. Blue (super irid.; really nice)
- \_\_\_ 191. Imperial Grape Handled Punch Cup – Elec. Purp. (super example)
- \_\_\_ 192. Imperial Fashion Tumbler – odd Smoke (odd irid.; nice)
- \_\_\_ 193. (2) Dugan Tumblers; Peacock at the Fountain and Rambler Rose – Purp. (selling x2)
- \_\_\_ 194. (3) Fenton Tumblers – Butterfly and Berry, Lattice & Grape, Orange Tree Orchard – Blue (selling x3)
- \_\_\_ 195. Fenton Leaf Tiers ftd. Tumbler – Dk. Mari. (a really nice example)
- \_\_\_ 196. Lot (3) Tumblers – Dugan Cherry Wreath, Imperial Octagon, Fenton Butterfly and Berry – Mari. (selling x3)
- \_\_\_ 197. Fenton Prism Band Tumbler with Floral Decoration – Amyth. (scarce)
- \_\_\_ 198. Dugan Beaded Shell Handled Mug – Blue (average irid.)
- \_\_\_ 199. (3) Fenton Wreath of Roses Punch Cups with Vintage Grape Int. – Green (selling 3x the money)
- \_\_\_ **200. AUSTRALIAN MAGPIE 8 RUFFLED SAUCE – PURP. (BRIGHT COLOR, DETAIL AND IRID.)**
- \_\_\_ 201. Dugan Cherry Wreath Oval Master Berry Bowl with (1) ind. – Purp. (selling both items for one money)
- \_\_\_ 202. 3 pc. Lot – Vintage Banded Mug, Stork in the Rushes Mug, Sailboat Wine – Mari. (selling x3)
- \_\_\_ 203. Imperial Star and File Stemmed Champagne and a 5" Diamond Ring 6 Ruffled Sauce – Mari. (selling x2)
- \_\_\_ 204. Imperial Grape Water Pitcher – Mari.
- \_\_\_ 205. Imperial Octagon Lg. Water Pitcher – Green (rare but as is; damage at base)
- \_\_\_ 206. 3 pc. Lot – Lea Creamer – Shell and Jewel Creamer (no lid) and Grape and Gothic Arches Sugar (no lid) – (selling for one money)
- \_\_\_ 207. Westmoreland Louisa ftd. Rose Bowl – Amyth. (nice color)
- \_\_\_ 208. N Daisy and Plume Stemmed 6 Ruffled Compote – Mari.
- \_\_\_ 209. Fenton Peacock at the Urn Stemmed Compote – Mari. (satiny)
- \_\_\_ 210. Fenton Iris Stemmed 6 Ruffled Compote – Mari. (satiny)
- \_\_\_ 211. Bud Vase in Silver Base – Mari.
- \_\_\_ 212. (2) Dugan Twig Bud Vases – Mari.
- \_\_\_ 213. 7 1/2" Fenton Acorn Ruffled Bowl – Mari.
- \_\_\_ 214. 9" Imperial Open Rose Lg. Deep Round Bowl – Mari.
- \_\_\_ 215. Surprise!!!



DONALD DONALD  
150 HIGHLAND AVENUE  
CUMBERLAND, RI 02864



VISIT [www.necga.com](http://www.necga.com)  
CLICK on CARNIVAL GLASS LINKS PAGE  
For pictures and brochures

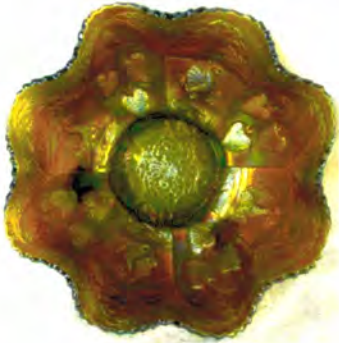
Lee Markley  
Box 306  
Mentone, IN 46539

# BURNS

AUCTION SERVICE

465390306 B004

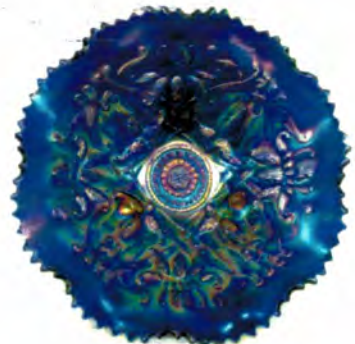
## NECGA HIGHLIGHTS



Lot #111

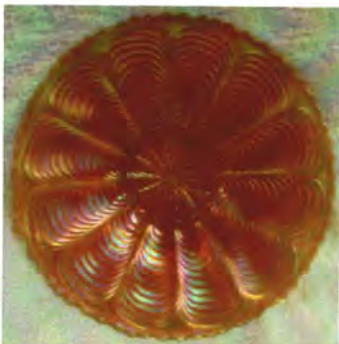


Lot #145

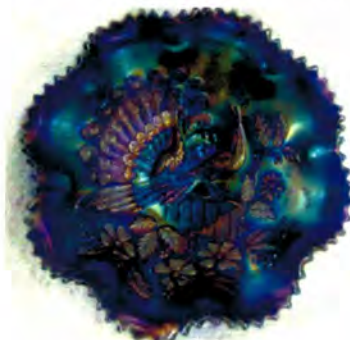


Lot #160

## NCCC HIGHLIGHTS



Lot #152



Lot #58



Lot #46