



Carnival Glass Auction at the WWWCGA Rinehart & Wills Collections

Saturday August 13th 2011 at 9:30 AM

*This is a Public Auction/Event. You do NOT need to be a member of WWWCGA to attend
Greenville Auction Center- Greenville Ohio*

Host Hotels: Greenville Inn- 937-548-3613 and the Holiday Inn 937-548-1328

Just ask for "special" rate for Jim Wroda Auctions and they will take care of you!

Phone us: 937.548.7835

Email us: office@jimwrodaauction.com

Website: www.jimwrodaauction.com

FULL CONVENTION INFORMATION ON INSIDE COVER. TAKE A LOOK!

*****Mail, E-Mail, Phone and Absentee Bids Policy:*****

We do accept absentee bids, Phone bids(\$500.00 minimum bid) and left bids. All bids will be bid competitively against the audience. ALL absentee bids must be to us **no later than** 2 days prior to the auction, otherwise we will not guarantee them being entered into our system. All SUCCESSFUL absentee, phone and left bids are subject to a \$7.00 convenience fee per successful bid, plus postage and insurance. We will contact you within a couple of days after the auction. Please do not call us to see if you won an item. Jaci will call you if your bid was successful. If damage is found during the auction or preview we will cancel your bid. If manufacture problems bother you such as air bubbles, pulled points, soda ash, tool marks, or any other manufacturing flaw, please be specific in your mail bids or email bids. If there is a manufacture flaw on an item that we feel is truly distracting, we have noted that in the listing already. Auction Company has the right NOT to execute an absentee bid for any reason. ALL items must be paid for within 7 business days after notification.

Terms & Conditions: Cash, Travelers checks, business or personal checks w/I.D. Visa/ MC & Discover with a 3% clerking fee.

Jim Wroda Auction Services, LTD

5239 ST RT 49 S. Greenville, Ohio 45331

Jim Wroda - Auctioneer

Rapid Printing - Greenville, Ohio - 937-548-1010



**We are NOW Booking collections for 2012 Carnival Glass Conventions!
Give us a call, We would love to work with YOU on YOUR auction!**

*Welcome to the WWWCGA Schedule of events for August 10th - 13th 2011
Have a great time & lets go for a ride for only 20 bucks a person!*

Let's line 'em up:

Tuesday August 9th 2011:

- > From 4:00 pm to 8:00 pm Early Bird dealer set-up

Wednesday August 10th 2011:

- > Golf outing at 9:30 am, Meet at the Facility at 8:45 am. - Please let us know if you would like to go so we can have proper arrangements. Deadline will be Monday August 9th for golfing.
- > Dealer Set-up from 9:00 am to whenever- Reserve your spot! Spaces always go quickly!
- > At 6:00 pm Reception w/ the Fairlawn Steakhouse taking care of you. Food, Drinks, Entertainment & Fun! Stay as long as you want!

Thursday August 11th 2011:

- > Doors open at 8:30 am
- > Seminar: 10:00 am Seminar with Samantha Prince
- > Seminar: 11:00 am Seminar with Jim Wroda - Absentee bidding and Internet bidding.
- > 12:30 pm: Lunch at the Greenville City Park with a SPECIAL guest Speaker.
- > Afternoon & dinner on your own! Enjoy downtown. There's a lot to do! or come to the facility and visit with friends.
- > 6:30 pm Carnival Glass Tumbler Auction (Approx. 175 tumblers to be sold)
- > 9:00 pm Weenie & Marshmallow roast by the fire w/ entertainment. We may even have a midnight auction again! You never know around here!

Friday, August 12th 2011:

- > Doors open at 8:30 am (***Auction Preview ALL DAY***)
- > 10:00 am Stretch Glass and Fenton Auction
- > Pizza Party lunch from Marco's - then do what you want, just be back by 5:30!
- > at 5:30 pm **Let the fun begin!!** We will be having Carnival Night! This will consist of the Hog Roast Chicken BBQ that is back by overwhelming requests! You will also have the FIRST EVER Classic Car Show at a carnival convention, Outdoor Entertainment from a New York Band AND you will have outdoor games, just like the old days, to win a piece of Carnival Glass (or a gold fish!) under the big top tent! You will not want to miss this and bring dollar bills! DO NOT MISS FRIDAY! There will also be a prize for the BEST DRESSED 1930's outfit! (\$50.00 for the best dressed individual, and \$100.00 for the best dressed couple!) These activities will run until 9:30! Stay as long as you want! This will be the most fun you have ever had at a convention!! MAKE YOUR RESERVATIONS NOW IF YOU HAVEN'T ALREADY! AND REMEMBER THE MAGIC WORDS..... ONLY 20 BUCKS!

Saturday, August 13th 2011:

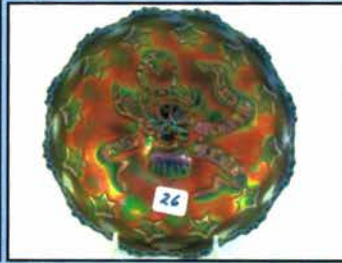
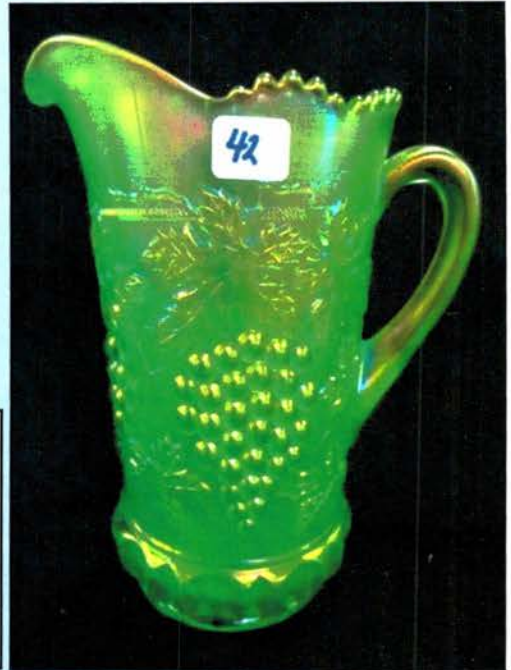
- > Doors open at 8:00 am for auction preview
- > 9:30 am will be the unbelievable collections of Grace Rinehart and The Wills. This will be the one of Finest Auctions of the year! ALL BEING SOLD WITH NO RESERVE!! Take a look and be here! You never know what happens at an auction! Nothing is out of reach! *Please note: Lunch will be served by Fairlawn courtesy of Stacy and Desiree Wills. Thanks Stacy & Des!!
- > 5:30 PM Saturday Dinner and Worship Service by music, Hymn Sing, for anyone who wishes to attend before heading home. This has not been done in decades in conjunction with a convention and we think it is long overdue. This will not only be a good time but some very special fellowship with everyone! We will be having a *Very Special* performance by Betty Pierce, Carl Booker & Laurie Wroda.



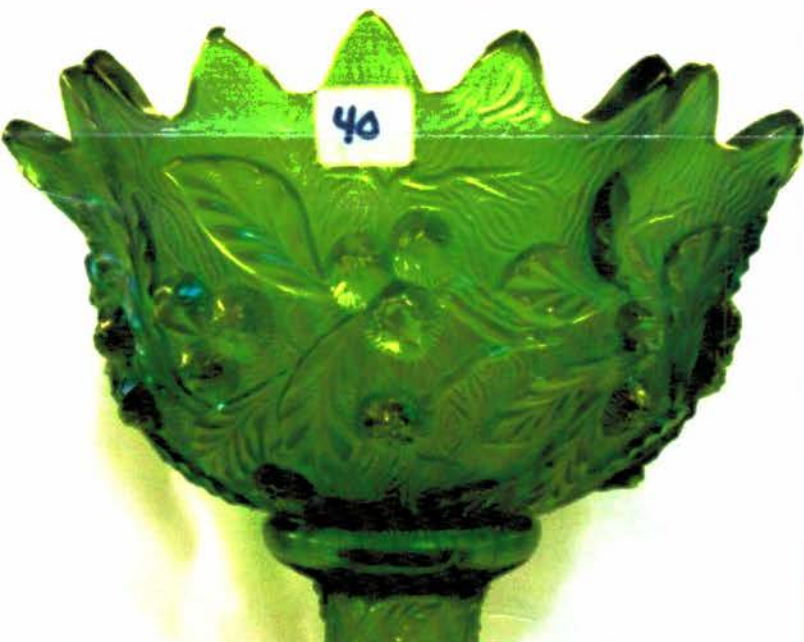
Jim Wroda Auction Services 937-548-7835

August 13, 2011 WWW.CGA Carnival Listing

- 1 ³⁵⁰ Nwood IB Peacock at Fountain Covered Sugar
2 ³²⁵ Nwood IB Peacock at Fountain Spooner
3 ²⁷⁵ Nwood Purple Peacock at Fountain complete table set. Nice!
4 ⁵⁵ Nwood mari Peacock at Fountain covered butter dish
5 ⁴⁰ Nwood mari Peacock at Fountain spooner
6 ⁷⁵⁰ Nwood IB Peacock at Fountain water pitcher. Nice color! Scarce
7 ¹⁶⁰ 2-Nwood IB Peacock at Fountain tumblers 1 money
8 ¹²⁵ Nwood white Peacock at Fountain water pitcher Nice frosty irid
9 ⁴⁵⁰ Nwood white Peacock at Fountain complete table set Very hard to find
10 ¹⁷⁰ Nwood white Peacock at Fountain master berry bowl
11 ⁷⁰⁰ Nwood elec purple Peacock at Fountain fruit bowl Scarce and very nice
12 ⁶⁵ 2- Nwood ^{BLUE} purple Peacock at fountain tumblers
13 ¹⁵⁰ Nwood purple G&C powder jar
14 ¹⁵⁰ Nwood purple G&C cologne bottle
15 ¹⁵⁰ Dugan 8" purple Lined Lattice vase
16 ⁴²⁵ Nwood purple G&C Tankard water set w/ correct tumblers. Very hard to find complete!
17 ⁹⁵ Nwood mari G&C pitcher. Nice color
18 ⁸⁵ 2 - Nwood mari G&C cologne bottles no stoppers
19 ⁷⁵ Nwood white Grape Arbor tankard.
20 ⁴²⁵ West purple Checkerboard water pitcher Very Scarce item
21 ²⁵⁰ Pair Red Double Scroll candlestick holders
22 ¹⁵⁰ Nwood AO Bushel basket. Nice
23 ¹¹⁵ Nwood mari Butterfly bon bon w/ Threaded back
24 ⁴⁰ Fenton blue Blackberry miniature compote
25 ⁴²⁵ Mburg Purple Hobnail swirl rosebowl
26 ⁴⁷⁵ Fenton 7" blue Elks 1911 ICS bowl. Scarce
27 ³⁵ Fenton 12" mari Stag & Holly ICS ft'd bowl
28 ⁵²⁵ Fenton RED Peacock & Grape 7" ft'd bowl. Scarce
29 ³²⁵ Fenton blue Orange Tree 7pc punch set.
30 ¹⁰⁵ Fenton white Orange Tree punch top
31 ²⁵⁰ Imp purple Diamond & Sunburst Wine decanter & ~~2~~ 3 wines.
32 ¹⁹⁰ Imp elec purple Diamond Lace pitcher & tumbler
33 ¹⁴⁵ Mburg 9" rad mari Fleur-de-lys ICS ft'd bowl wonderful color!
34 ⁴²⁵ Fenton blue Ten Mums tankard. Scarce & nice
35 ⁸⁰ 5- Fenton BLUE Paneled Dandelion tumblers 1 money
36 ²⁰⁰ Fenton mari Apple Tree 7pc water set. Nice color Scarce
37 ²²⁵ Dugan white Dahlia complete table set w/ gold trim Very tough set and NICE
38 ⁸⁵ Nwood crystal Memphis table set. No sugar lid
39 ⁷⁵ 2 Crystal stemmed compotes. Nwood?
40 ¹⁷⁰⁰⁰ NWOOD LIME GREEN ACORN BURR PUNCH BOWL AND BASE. EXTREMELY RARE AND VERY COLORFUL! ONLY ONE KNOWN. SUPER PASTEL IRID. OUTSTANDING
40a ²⁵⁰ 6 Nwood IG Acorn Burr punch cups
41 ²³⁰⁰ Nwood WHITE Acorn Burr 8 pc punch set. Very frosty irid and always a hit!
42 ⁵⁰⁰⁰ RARE Nwood IG G&C TANKARD pitcher. Just a couple of these reported. Fantastic color top to bottom!
43 ⁵⁵⁰⁰ Ultra RARE Nwood Peacock at Fountain IG punch set w/3 cups. Another beautiful pastel from the Wills collection! you have to buy'em when you see 'em!
44 ²⁹⁰⁰ RARE Nwood WHITE Peacock at Fountain 8pc punch set. Pastel irid all over! WOW!
45 ⁴⁵⁰⁰ Nwood Grape Arbor Ice Green Tankard VERY RARE! Just a handful known. Hardly ever for sale. ^{3 Tumblers}
46 ³²⁵ 2 Imperial Emerald green 474 punch cups. RARE 1 money
47 ⁷⁰ Mburg Green Hanging Cherries spooner
48 ⁶⁵ Mburg Green Hanging Cherries creamer
49 ⁹⁵ Mburg rad mari Fleur- de- lys CRE ruffled bowl w/ collar base. NICE
50 ⁶⁰ Nwood purple 8.5" 3 fruits spatula ft'd bowl
51 ⁶⁵ Nwood 9" green Strawberry plate w/ BW back
52 ⁷⁵ Fenton 8" white Peacock at Urn bowl
53 ¹⁵ Fenton 8" lite mari Leaf Chain bowl
54 ⁵²⁵ Imp elec purple Broken Arches punch bowl and base NICE!
55 ⁷⁵ US Glass mari 8" Cosmos & Cane deep bowl
56 ⁸⁰ Imp pastel mari 7" Acanthus round bowl
57 ⁴⁵ Nwood mari Memphis master berry bowl (did not take a base). great color
58 ⁵⁵ Fenton 8" white 3 Row OE hat/basket Some webbing stress
59 ⁴⁵ Nwood 8" pastel Mari Strawberry PCE bowl
60 ¹³⁵ Nwood 8" purple Wishbone ft'd bowl. Nice
61 ¹⁵⁰ Imp elec purple Diamond Lace pitcher
62 ²³⁵ Pair mari Sunflower and Diamonds 9" vases
63 ⁷⁵ Mburg crystal Ohio Star butter and 6" round bowl
64 ⁵⁵ Mburg crystal Ohio Star cruet
65 ²⁰⁰ Nwood blue Enameled cherries 8pc water set
66 ¹⁴⁵ Imp 6" smoke Morning Glory vase
67 ⁶⁵ Nwood 10" purple Diamond Points vase
68 ⁴⁵ Imp mari 2 handle stretch vase
69 ⁸⁰ Imp mari 6-sided candle stick. RARE
70 ⁴⁵ Imp Smoke Fashion Sugar
71 ¹⁵ Nwood mari Dandelion mug-~~7~~
72 ¹⁰⁰ Dugan 10" elec purple Lined Lattice vase NICE
73 ²²⁵ Imp 12" Purple Ripple vase w/ elec hi-lights
74 ²⁰⁰ Imp 12" Purple Ripple vase w/ elec hi-lights
75 ⁴²⁵ Nwood 10" blue Peacock at Urn MIC bowl. Nice deep cobalt
76 ²¹⁰ 2- Nwood 5" elec blue Peacock at Urn ICS bowls 1-money. Both SHARP!
77 ¹⁶⁰⁰⁰ ON FIRE!!! IMP EMERALD GREEN CHRYSANTHEMUM CHOP PLATE. ABSOLUTELY BLASTING W COLOR! DO NOT PASS THIS ONE UP. From the Morgan collection. NuArt HOT!!!

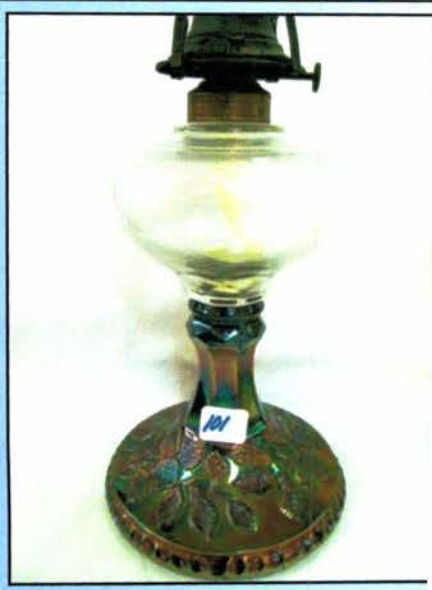
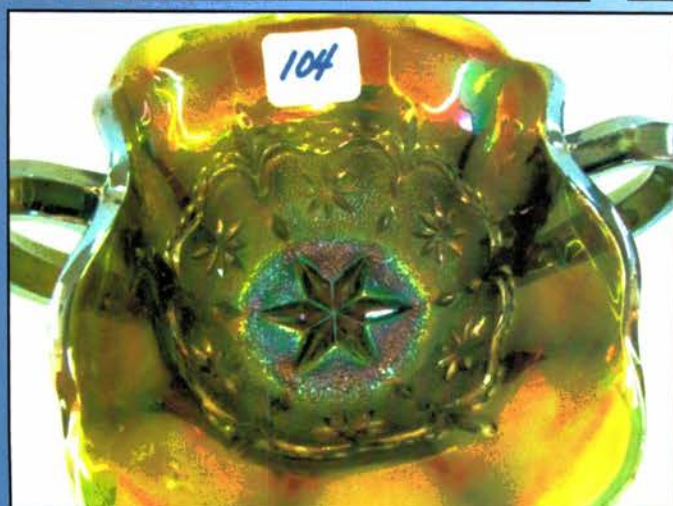
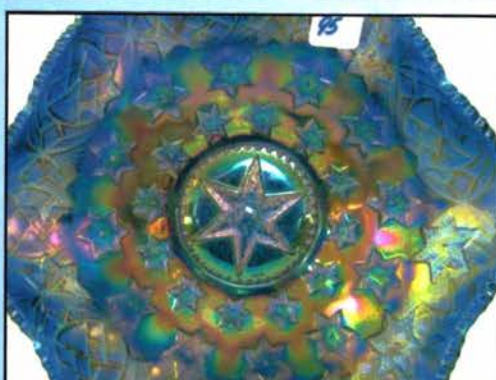
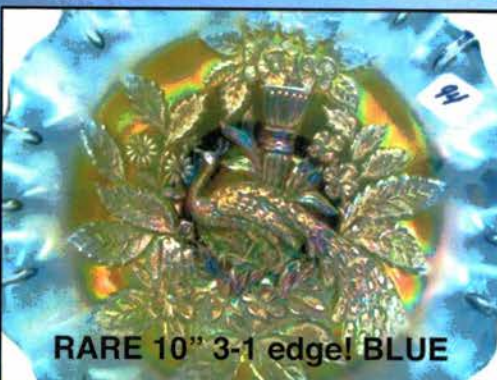
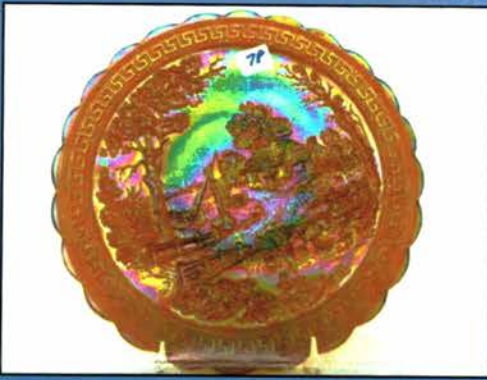


RARE Lime Green!



- 78 ⁹⁵⁰ Imp 10" AMBER Homestead Chop plate. very nice and a keeper! NuArt
- 79 ¹⁶⁰⁰ Imp 10" SMOKE Homestead chop plate Has to one of the best ever! SUPER! and IS signed NuArt.
- 80 ¹¹⁰⁰ Imp 10" purple Homestead chop plate very nice color and pressing..
- 81 ⁸⁸⁰ Imp elec purple Loganberry vase. A real Looker!
- 82 ⁴²⁰ Imp amber Loganberry vase. Nice! Scarce
- 83 ^{16,000} SUPER RARE EMERALD GREEN OHIO STAR SWUNG VASES (2). Both are fabulous! BECAUSE THEY ARE A PERFECT MATCH, WE WILL BE SELLING 1 WITH THE OPTION OF THE HIGH BIDDER TO TAKE THEM BOTH. IF HIGH BIDDER DOES NOT TAKE BOTH, THE BACK UP BIDDER WILL HAVE OPTION TO TAKE THE OTHER AT THE SAME PRICE. With trying to keep Grace's wishes but yet also trying to achieve the best price for her, we feel this is the fair way to auction these wonderful vases. There is not \$500 difference in these vases! Grace would love for them to stay together as they apparently have been from day of making. What an opportunity to continue history!
- 84 ⁵⁰⁰ Mburg rad purple Hobnail jardinière. Very rare! Only a couple of these are known. WOW! Super piece of glass *
- 85 ⁴⁷⁵ Mburg 2 tone Hobnail Sugar bowl. RARE color combination!! (Ha Ha) Blue lid/ Green base. I'm not sure what is more rare??
- 86 ²³³⁵ Mburg mari Hobnail covered sugar
- 87 ⁴⁵⁰ Mburg blue Hobnail tumbler
- 88 ³⁵⁰ Mburg purple hobnail tumbler
- 89 ¹²⁰ Mburg mari Hobnail rosebowl
- 90 ¹⁵⁵ Mburg purple Hobnail rosebowl
- 91 ²⁵⁰ Mburg purple Hobnail swirl rosebowl
- 92 ²⁵⁰ Mburg 10" mari Hobnail Swirl vase
- 93 ³³⁵ Mburg 11" purple Hobnail Swirl vase
- 94 ¹⁰⁰⁰ RARE Mburg 10" BLUE Peacock at Urn 3-1 edge bowl. VERY RARE> Not sure I have heard of another in this shape?
- 95 ²⁰⁰ Mburg 10" BLUE Many Stars ruffled bowl Scarce
- 96 ⁵²⁵ Mburg 10" GREEN Many Stars ruffled bowl Scarce
- 97 ⁵²⁵ Mburg 10" rad purple Many Stars ruffled bowl
- 98 ²⁷⁵ Mburg 10" mari Many Stars 3-1 edge bowl. NICE color
- 99 ⁷⁵⁰ Mburg Green Venetian giant rosebowl or Oil lamp base. Has to be Mburg... Look at the base. Scarce
- 100 ¹⁵⁰⁰ Mburg purple Hobstar & Feather giant rosebowl. Very nice and scarce
- 101 ²³⁰⁰ Mburg purple Wild Rose small oil lamp Nice color and hard to find.
- 102 ¹⁹⁵ Mburg mari Wild Rose lamp. AS IS glued stem. Too bad, was a nice example
- 103 ¹²⁵ Mburg green Holly 2 handled nappy
- 104 ⁶⁵⁰ Mburg green Night Stars 2 handled nappy RARE! and Very sharp!
- 105 ³⁰⁰ Mburg purple Feather & Heart pitcher. Scarce
- 106 ¹⁸⁰ Mburg mari Feather & Heart pitcher. Scarce
- 107 ⁹⁵ 3 Mburg mari Feather & Heart tumblers
- 108 ⁹⁵⁰ Super Mburg Green Hanging Cherries water pitcher. Radium and nice

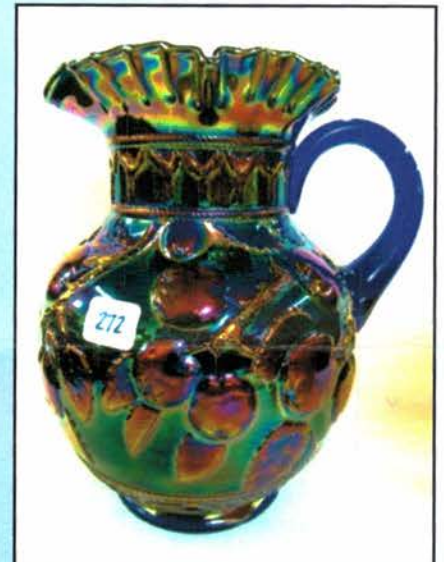
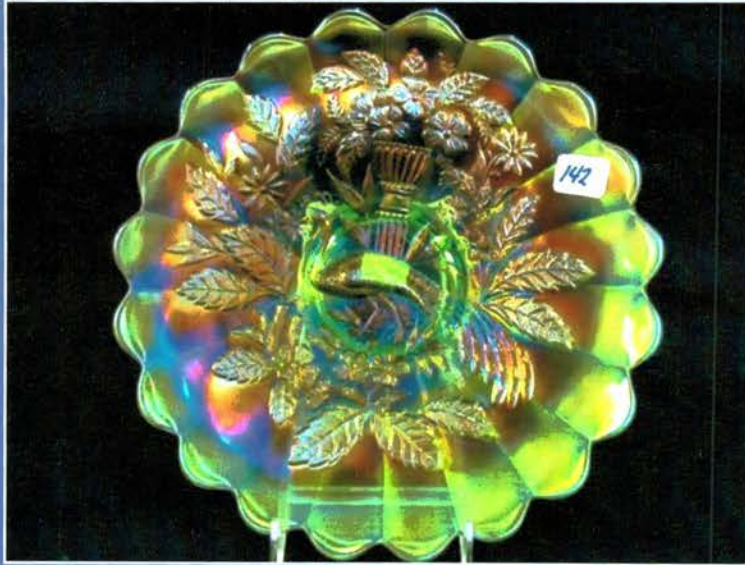
- 109 ¹²⁵⁰ Mburg Rad purple Hanging Cherries water pitcher. One of the better ones!
- 110 ¹⁰⁰ green Hanging Cherries tumblers(CB)
- 111 ⁶⁰⁰ Mburg rad purple Morning Glory tumbler RARE
- 112 ⁴⁰⁰ Mburg rad purple Morning Glory tumbler RARE. tiny flick on edge, no harm
- 113 ³⁵ Mburg mari Marilyn tumbler
- 114 ¹¹⁰⁰ Mburg rad purple Seacoast pin tray. This IS a really sweet one! No issues!
- 115 ⁷⁰ Mburg GREEN Seacoast pin tray. RARE! No issues
- 116 ¹⁰⁰⁰ Mburg mari Seacoast pin tray. Scarce No issues
- 117 ⁷⁵ Mburg purple Sunflower pin tray. Scarce No issues
- 118 ¹⁰⁰⁰ Mburg GREEN Peacock at Urn giant compote. Very scarce!
- 119 ²⁰⁰ Mburg 9" rad purple Peacock at Urn master berry bowl. Nice
- 120 ²⁰⁰ Mburg 10" rad green Peacock at Urn ruffled bowl Scarce
- 121 ⁴⁰⁰ Mburg 10" rad purple Peacock at Urn ruffled bowl Scarce
- 122 ¹¹⁰ Mburg 10" mari Peacock at Urn ruffled bowl
- 123 ⁵⁰⁰ Mburg 10" rad green Peacock at Urn MIC bowl Scarce
- 124 ¹⁴⁵ Mburg 10" mari Peacock at Urn MIC bowl
- 125 ¹¹⁵⁰ RARE Mburg 6" purple Peacock at Urn plate. Very hard to find!
- 126 ²¹⁰⁰ Mburg rad mari Rose Columns vase. This is a very good vase. It does have something midway on the interior that I cannot quite figure out. The pressing may be the best I have ever seen on a rose columns vase. Take a look.
- 127 ¹⁴⁰⁰ RARE Mburg 6" Hanging Cherries 3-1 edge bowl. Just keeps on keepin' on!
- 128 ²⁰⁰ Mburg rad green Nesting Swans bowl. Scarce
- 129 ⁶²⁵ Mburg rad purple Nesting Swans bowl. Scarce
- 130 ¹²⁰ Mburg mari Nesting Swans bowl.
- 131 ¹⁷⁵ Mburg 7" rad purple Grape Wreath vari CRE ruffled bowl. Nice
- 132 ⁹⁵ Mburg 9" rad green Strawberry Wreath CRE bowl
- 133 ²⁷⁵ Mburg 8" rad purple Grape Wreath ICS bowl. Another nice bowl
- 134 ⁹⁵ Mburg 7" purple Blackberry Wreath bowl
- 135 ²²⁵ Mburg 10" rad purple Strawberry Wreath bowl. Nice
- 136 ⁷⁵ Mburg 7" green little Stars ruffled bowl
- 137 ¹⁰⁵ Mburg 7" green Little Stars ruffled bowl
- 138 ⁴⁵⁰ Mburg 9" green Little Stars ICS bowl. RARE size and very sharp!
- 139 ⁸⁵ Mburg 6" green Cosmos ICS bowl
- 140 ⁷⁰⁰ RARE Mburg 10" mari Hanging Cherries bowl w/ hobnail back.
- 141 ⁸⁰⁰⁰ NWOOD 10" SAPPHIRE PEACOCK AT URN MIC BOWL IT HAS BEEN SAID THAT THIS BOWL IS THE BEST PIECE OF SAPPHIRE NWOOD EVER MADE. THIS BOWL HAS BEEN THE TOPIC OF DISCUSSION SEVERAL TIMES AT CONVENTION TALKS. WAYYYY above the norm for this...good luck!



Can you believe you can come to this convention for 20 bucks?! Thats it!

- 121,000
142 RARE Nwood 10" IG Peacock at Urn Chop plate. VERY RARE and has great pastel irid! Another Smokin' piece of glass!
- 925
143 Nwood 6" IG Diamond Points vase. Scarce
- 800
144 Nwood 6" IB Diamond Points vase. Scarce
- 1000
145 Nwood 6" IG Tree Trunk Squatty vase Scarce
- 1700
146 Nwood 6" IB Tree Trunk Squatty vase Scarce. NICE!!!
- 800
147 Nwood 6" IB Leaf Columns squatty vase Scarce and nice
- 45,000
148 RARE NWOOD AQUA OPAL POPPY SHOW PLATE. BLASTING PASTEL IRID! JUST A TOP SHELF PIECE ALL DAY LONG! TONS of opal & color!
- 3000
149 HOT Nwood elec Green Poppy Show plate. ON FIRE! Has to be one of the best in green!
- 2300
150 HOT Nwood elec blue Poppy Show plate. STUNNING IRID! WOW!
- 2000
151 Nwood 9" Aqua Opal 3 Fruits stippled plate. Just a ton of opal and pastel color! BUY IT!
- 450
152 Nwood 9" IB 3 Fruits stippled plate- RARE but has a point issue. Typically sells for 5-6K.
- 1150
153 Nwood IB Butterfly Bon Bon w/ Threaded back. RARE. NOT MANY AROUND AT ALL. Beautiful!
- 725
154 Nwood 9" IB Poinsettia ft'd bowl. Another beautiful pastel from the Wills Collections
- 1500
155 OK hang on!! Nwood 9" ELEC PURPLE Heart & Flowers plate. This is unreal! You may need a seat belt for this one! The 'Big Dog' must have had to really step up for this one!
- 2600
156 Nwood 9" em Green Rose Show plate. Oh Yeah... How hot do you want it!
- 1300
157 Nwood 9" Sapphire G&C stippled plate. Folks, I could go on and on about all of this WONDERFUL glass. You just do not want to miss this auction!
- 1000
158 RARE Nwood IG/ Lime Wishbone Epergne. Nice and dark. As close to lime as you will see. Chip on BASE of lily. This drives me nuts... you know what I mean
- 500
159 Nwood IB Wishbone Epergne. Very scarce Has lily glued in which is NOT uncommon.
- 350
160 Nwood 13" vaseline Thin Rib midsize vase Very scarce. One of the hardest colors to get
- 800
161 Nwood 12" Sapphire Thin Rib midsize vase Very scarce. Great color
- 2300
162 Nwood Em Green Singing Birds water pitcher. Knock out irid all the way around, top to bottom.
- 125
163 2 em Green Singing Birds tumblers.
- 8000
164 Nwood 8" AO WISHBONE FT'D BOWL! SUPER RARE AND NICE! GRACE HAS A GREAT STORY ON THIS ONE! I wish someone would walk into my place of business and offer it up at \$25! Congrats to the new owner!
- 3,000
165 Nwood 8" Aqua Opal Sunflower ft'd bowl Only 2 or 3 of these known and this may be the only pastel example. Some of the best AO in one auction EVER!
- 850
166 Nwood 8" AO Peacocks ruffled bowl. Again... throw out the books on this one! Enough opal for 4 of these!
- 600
167 Nwood 11" AO Tree Trunk vase. Opal ALL THE WAY TO THE BOTTOM! WOW!
- 1000
168 Nwood AO Daisy & Drape vase. Nice
- 700
169 Nwood AO G&C Punch cup
- 350
170 Nwood 7" AO Drapery vase. RARE and another stunning piece of AO in this auction
- 1700
171 Nwood Ice blue opal Good Luck ruffled bowl. True IBO.. No questions here, RARE
- 950
172 Nwood IB good Luck ruffled bowl. Pastel irid all over! SUPER
- 1700
173 Nwood IB Tornado Ribbed vase. Extremely rare. has some sort of line around base.. take a look.
- 5000
174 Nwood GREEN Peacock at Urn 7pc Ice Cream set. Super well matched set from the Harold Cox collection.
- 5000
175 Nwood blasting elec blue Peacock at Urn 7pc ice cream set. Everything is a perfect match! All electric irid! From Harold Cox collection
- 375
176 Nwood GREEN Raspberry 7pc water set. Scarce
- 450
177 Camb. green Inv. Strawberry spittoon. Scarce
- 250
178 Camb. mari Strawberry Spittoon. Nice
- 350
179 Nwood 11" green Tree Trunk vase
- 550
180 Dugan white Grape Delight rosebowl
- 175
181 Imp mari Field Flower 7pc water set. Scarce
- 40
182 Robert Hansen Elec green Town Pump Looks like tiffany!
- 250
183 Mburg 7" rad purple ELKS 3-1 edge bowl. VERY RARE. Haven't seen one in a Looong time! Here ya go, Grace has 2!
- 1900
184 Mburg 7" rad purple Elks ICS bowl. Enough Said on previous lot
- 3000
185 SUPER RARE MBURG RAD PURPLE COURTHOUSE UNLETTERED 3-1 EDGE BOWL. just a very nice bowl
- 650
186 Mburg rad purple Courthouse ICS bowl Very hard to find these days
- 1000
187 Mburg rad purple Courthouse ruffled bowl gettin' tough
- 500
188 Mburg 10" GREEN Seaweed ruffled bowl. Laurie says best pattern Mburg ever made!
- 150
189 Mburg 8" rad green Holly Whirl vari CRE bowl
- 130
190 Mburg 9" holly Whirl purple ruffled bowl (Leaves to center)
- 90
191 Mburg 9" Holly Whirl rad mari ruffled bowl (Leaves not center)
- 75
192 Mburg 10" rad purple Primrose bowl
- 350
193 Mburg rad purple 10" Fleur-de-lys CRE bowl rare edge
- 550
194 Mburg green Holly spade nappy
- 125
195 Mburg rad purple Holly spade nappy
- 3000
196 Mburg mari Multi Fruits and Flowers 8pc punch set w/ tulip top. Scarce
- 1600
196a Mburg mari multi Fruits and Flowers cups
- 2000
197 Mburg purple Hobstar & Feather tulip top 12 pc punch set. RARE and nice!
- 1500
198 Mburg mari Hobstar & Feather 12pc punch set. Very scarce. Haven't sold one in awhile
- 350
199 RARE Mburg GREEN Hanging Cherries 5 pc Berry set Nice
- 1000
200 RARE Mburg GREEN Hobstar & Feather punch set with Fleur-de-lys interior. Very rare color. Has a purple base... NOTE: No known green bases.

- 201 Mburg 8" mari Trout & Fly ICS bowl 250
- 202 ⁹⁰⁰ RARE Mburg purple Country Kitchen table set Very hard to find together
- 203 ³⁰⁰ Nwood 9" Green Good Luck plate
- 204 ³²⁵ Nwood 9" purple Good Luck plate
- 205 ²⁰⁰ Nwood 9" mari Good Luck plate
- 206 ²⁰⁰ Nwood 9" green Good Luck bowl
- 207 ⁴²⁵ Nwood 9" elec blue Good Luck bowl
- 208 ¹²⁵ Nwood 9" purple Good Luck bowl
- 209 ⁴⁵⁰ Nwood 9" GREEN Good Luck PCE bowl
- 210 ²⁰⁰ Nwood 9" elec purple Good Luck PCE bowl
- 211 ²⁰⁰ Nwood 9" white Rose Show plate
- 212 ⁷⁵ Nwood 7" green Fruits and Flowers plate
- 213 ²⁵⁰ Nwood 9" purple 3 Fruits stippled plate
- 214 ⁷⁵ Nwood 9" purple 3 Fruits plate
- 215 ¹⁶⁰ Nwood mari G&C compote
- 216 ³¹⁰⁰ RARE FENTON GREEN ORANGE TREE FLARED CENTERPIECE BOWL. Tremendous color and irid.
- 217 ¹⁷⁰ Fenton 9" white Peacock at Urn plate
- 218 ⁸⁵ Fenton white Floral and Grape pitcher Great color
- 219 ¹⁸⁰ Fenton blue Butterfly & Berry fern. Scarce
- 220 ³⁹⁰⁰ RARE Fenton blue opal Rustic 12" vase. Not ever seen this color before! Real nice lookin' vase
- 221 ¹²⁵ Fenton mari Bouquet 5pc water set.
- 222 ²⁰⁰ Scarce Nwood mari Cherry & Cable table set
- 223 ⁷⁰⁰ Mburg rad purple Nesting Swans bowl Killer irid!
- 224 ³⁵⁰ Mburg 9" purple Hobnail Swirl vase
- 225 ²⁰⁰ Dugan 11" elec purple Big basketweave vase Super
- ³⁵ 226 ~~F~~ Fenton white Orange Tree creamer
- 227 ¹⁵⁰ Imp elec purple Diamond lace water pitcher
- 228 ¹⁶⁵⁰ RARE Nwood 20" GREEN Tree Trunk funeral vase has tiny chip on top edge-pictured- Not many around.
- 229 ⁷⁵⁰ VERY RARE Imperial 9" Windmill 3-1 edge bowl in purple. nice multi-color irid on a piece I'm not sure i have even heard of before?!
- 230 ^{12,500} RARE DUGAN SMASHING ELEC PURPLE GARDEN PATH CHOP PLATE. FOLKS YOU JUST HAVE TO SEE IT TO BELIEVE IT. OMG!!!
- 231 ⁶⁰⁰⁰ Dugan elec purple Four Flowers chop plate. The best we have ever seen!! Hands down a perfect 10! WOW!
- 232 ⁴²⁵ Dugan 11" celeste blue Big Basketweave vase, Nice
- ⁵⁰ 233 Nwood Ice green Memphis punch bowl and base. VERY RARE but is cracked as most are for some reason. Perfect 15K+!
- 234 ⁹⁵⁰ Nwood Ice Blue Memphis 8pc Punch set. Another Killer, but is cracked. Again perfect 15k+. Good luck finding one though.
- 235 ¹⁵⁰⁰ Nwood WHITE Memphis 8pc punch set. All good and very pastel! What a neat pattern!
- 236 ⁷⁵⁰⁰ Nwood Ice Blue Wide Panel Epergne. Nice and frosty irid. From Lee collection.
- 237 ²¹⁰⁰⁰ Nwood Ice green Wide Panel Epergne. Nice and frosty irid pushing Lime. From Lee collection. Nice!
- 238 ²⁷⁰⁰ Nwood white Wide Panel Epergne. Nice and frosty irid. From Lee collection. Nice and very colorful!
- 239 ²⁰⁰⁰ Ok.. Here comes a row of Fenton plates that will Blow you away! Fenton 9" elec purple Captive Rose plate. BAM!
- 240 ⁹⁰⁰⁰ FENTON 9" SMASHING ELEC PURPLE LOTUS & GRAPE PLATE. 2 CHECK BOOKS AND A CC! WOW! NO TRIPLE WOW!!
- 241 ³⁴⁰⁰ Fenton GREEN 9" Thistle plate. As nice as you will find. You will love this one!
- 242 ¹⁸⁰⁰ Fenton MARI 9" Thistle plate. RARE!
- 243 ²⁰⁰⁰ Fenton PURPLE 9" Thistle plate. RARE! Oh yeah..
- 244 ⁴⁵⁰⁰ Fenton 9" elec purple Vintage plate. Find a better one!
- 245 ⁶⁵⁰⁰ Fenton 9" DARK mari Peter Rabbit plate. Call it pumpkin or whatever you want, but you will definitely call yours when you see it!
- 246 ¹⁵⁰⁰ Hot pink Pumpkin 9" Peacock at Urn Fenton plate. Oh my...
- 247 ⁴⁴⁰⁰ RARE Fenton 9" GREEN Orange Tree plate. Yes green! and nice!
- 248 ³⁰⁰⁰ RARE Fenton 8" IG Orange Tree ruffled bowl. w/ TT center. VERY RARE & Great irid!
- 249 ³¹⁰⁰ Fenton 9" RED RED RED Dragon & Lotus 8 ruffled bowl. This looks red any way you hold it. SUPER!!!
- 250 ⁴⁰⁰⁰ Fenton 7" MARI Elks 1910 Detroit bowl. Very RARE and vary nice! Only a few known
- 251 ²⁷⁰⁰ Fenton dark pumpkin mari Starflower water pitcher. Almost a shade PAST pumpkin!! WOW!
- 252 ⁷⁵⁰ Fenton 8" elec green Concord 3-1 edge bowl. Oh my!
- 253 ⁵⁷⁵ Fenton 8" elec green Captive Rose 3-1 edge bowl. Another take me home! WAY above average
- 254 ⁴²⁵ Fenton 6" Boggy Bayou Lime green opal vase -Int is irid!
- 255 ¹⁷⁵ Fenton 9" RED Fine rib vase
- 256 ⁷⁵ Beaded purse
- 257 ⁷⁵ Beaded Purse
- 258 ³⁰ Celeste and IG Swan Novelty
- 259 ⁴⁰ White and Purple Leaf Rays Nappy. Both quite nice
- 260 ^{12,000} RARE MBURG 11" MARI BLACKBERRY WREATH CHOP PLATE. ONLY ONE KNOWN. What a great lookin' plate.
- 261 ⁴⁰⁰⁰ MBURG MARI DIAMONDS SPITTOON made from tumbler Way to cute to pass up! Very RARE
- 262 ⁹⁰⁰⁰ MBURG 7" RAD PURPLE BIG FISH DEEP BOWL W/ BLUE IRID! LETS PLAY "GUTS" ON THIS ONE!
- 263 ^{10,000} SUPER RARE MBURG 11" MARI PEACOCK AT URN CHOP PLATE. FANTASTIC COLOR AND PRESSING. NEAT STRETCHY EFFECT. WHAT AN AUCTION FOR EVERYONE!
- 264 ^{19,000} RARE Mburg mari Blackberry Wreath spittoon made from berry bowl. Another Awesome piece of RARE Millersburg!
- 265 ⁴⁰⁰ Mburg 5" Rad Purple Peacock at Urn berry bowl Tons of blue irid!
- 266 ⁷⁰⁰ Mburg purple hobnail spittoon.
- 267 ⁴⁵⁰ Mburg mari Hobnail Swirl spittoon
- 268 ⁶⁰⁰ RED Roses & Lattice vase
- 269 ⁵ Mari Acorn Burr cup
- 270 ³⁰ Nwood Elec purple Grape Arbor tumbler



- 271 ⁴⁵ Nwood dark IB or Sapphire Grape Arbor tumbler
- 272 FENTON BLASTING ELEC BLUE APPLE TREE
PITCHER. Ok.. So there's elec then there's this... WOW!
Funk Collection
- 273 Fenton dark mari Strawberry Scroll water pitcher. Very
dark and even all the way down! Nice pressing
- 274 RARE US Glass WHITE Cosmos and Cane miniature
Ladies Spittoon. Cute as a button! Just a couple known in
all colors... here ya go!
- 275 RARE Fenton 4" mari Waterlily Spittoon made from
tumbler. PERFECT!
- 276 Camb. green Inverted Strawberry spittoon
- 277 Dugan White Wreathed Cherry water pitcher Very Scarce
- 278 Dugan elec purple Many Fruits 8Pc punch set w/ round
base. Nice set
- 279 Dugan purple Leaf Rays nappy. NICE
- 280 Fenton 5" mari 2 flowers 4 side up plate
- 281 Nwood 5" blue Peacock at Urn ICS bowl
- 282 Nwood purple Acorn Burr creamer
- 283 Nwood mari Drapery candy dish
- 284 Fenton 5" red OE hat. As is
- 285 Imp mari Open Rose Deep fruit bowl. Little different
shape
- 286 Imp 5" elec purple Scroll Embossed ruffled bowl
- 287 Imp 13" elec purple Ripple vase. Nice Pushing lav.
- 288 Fenton pumpkin mari Persian Medallion rosebowl.
- 289 Fenton 8" RED Fine Rib vase a little bit of flaking in
pattern
- 290 Fenton 6" blue Persian Medallion plate
- 291 Nwood 8" purple 3 Fruits ft'd bowl. has nice elec
highlights
- 292 Fenton 21" blue Rustic Funeral vase. Minor peeling on
top point
- 293 Fenton 20" blue Rustic Funeral vase. Nice
- 294 Mburg mari Feather & Heart pitcher
- 295 Mburg 5" green blackberry wreath 3-1 edge bowl
- 296 Imp 8" elec purple Double Dutch ft'd bowl
- 297 Imp 10" elec purple Grape ruffled bowl
- 298 Mburg 8" purple Big Fish 3-1 edge bowl. Rare edge for
Big Fish
- 299 RARE Amber Strawberry hatpin
- 300 elec purple Dimples and Brilliance hatpin
- 301 purple King Spider hatpin. RARE!
- 302 blue painted Rooster hatpin
- 303 Purple Big Butterfly hatpin
- 304 very nice purple Beaded hatpin, Scarce
- 305 Blue rooster hatpin
- 306 elec purple Bars and Beads hatpin
- 307 purple Basket Flower hatpin
- 308 Crystal/White Big Butterfly hatpin, Lightly irid
- 309 purple Veiling hatpin scarce
- 310 Mburg 8" mari Blackberry Wreath bowl
- 311 Mburg 9" BLUE Blackberry Wreath bowl very nice
piece of BLUE

- 312 RARE Mburg rad mari FLARED SQUARE Grape
Wreath variant bowl. Cool shape!
- 313 Mburg mari Strawberry Wreath CRE compote
- 314 Mburg rad purple 5pc Peacock at Urn berry set. All
matching
- 315 Mburg mari Diamonds tumbler
- 316 Mburg purple Feather & Heart tumbler
- 317 Mburg mari Holly Spade nappy
- 318 Mburg GREEN Sunflower pin tray
- 319 Mburg purple Hanging Cherries Water pitcher Nice
- 320 Nwood 9" IG Peacock plate
- 321 Nwood AO Bushel Basket. Nice
- 322 Nwood elec blue Bushel Basket
- 323 Mburg Crystal Ohio Star Syrup
- 324 Mburg Crystal Ohio Star compote and square dish
- 325 Mburg Crystal Ohio Star Vase
- 326 Mburg Crystal Hobstar & Feather pickle and relish dish
- 327 Mburg Crystal Hobstar & Feather ICS bowl
- 328 Mburg Crystal Hobstar & Feather frosted pitcher
- 329 Mburg Crystal Hobstar & Feather punch cups-4
- 330 Mburg Crystal Hobstar & Feather 4 pc berry set Frosted

We hope you have enjoyed the Convention for 2011.

Please keep a watch for Grace Rineharts auction on Nov 11th and 12th. She has a lot of great glass still to come! Just Keep watching the calendar and you will see the updates as we go!

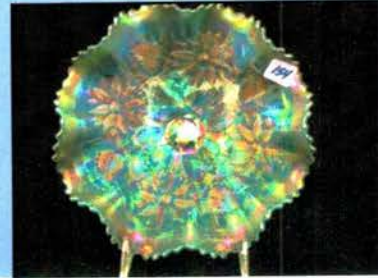
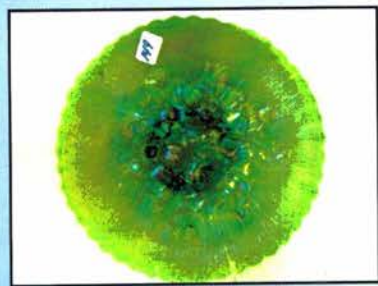
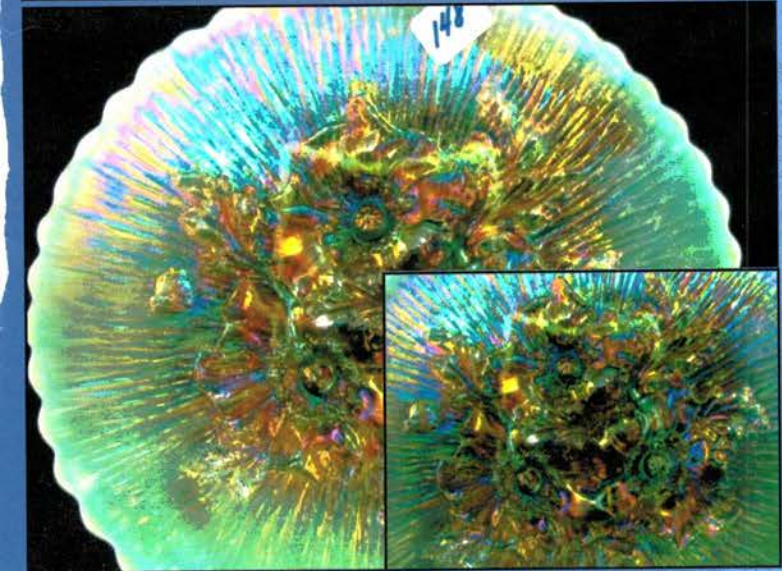
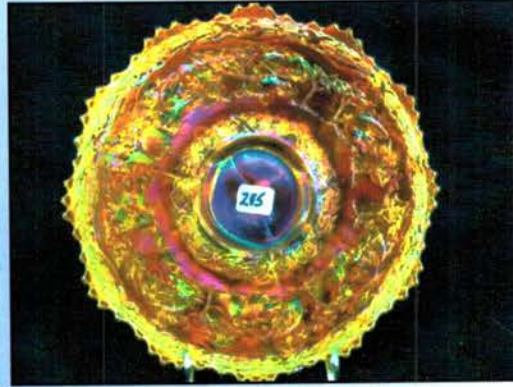
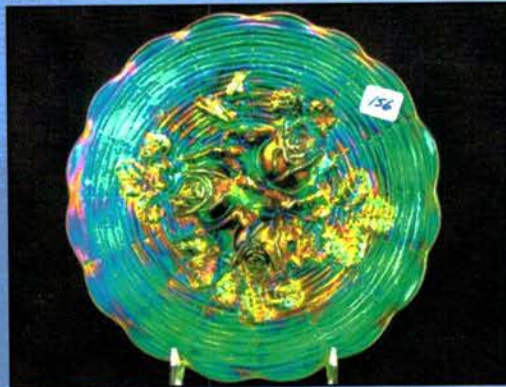
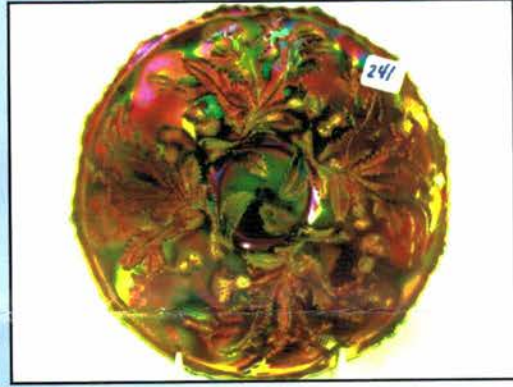
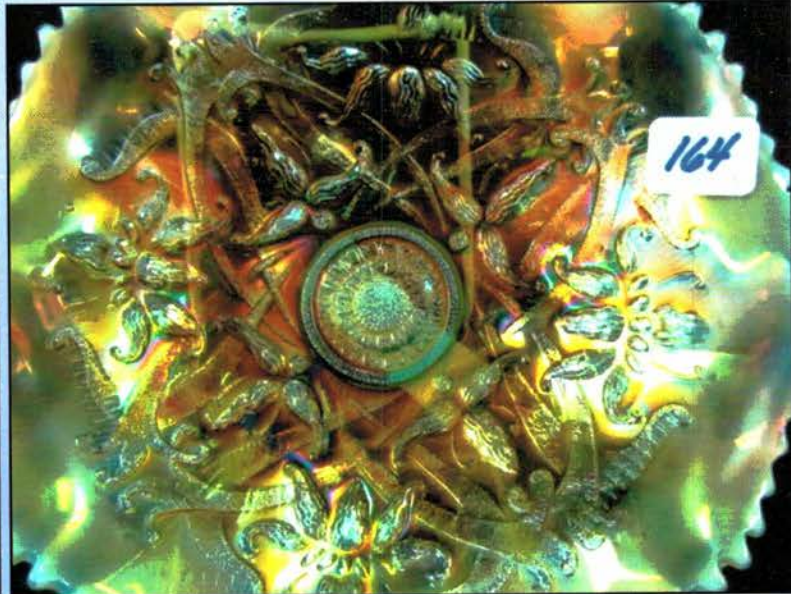
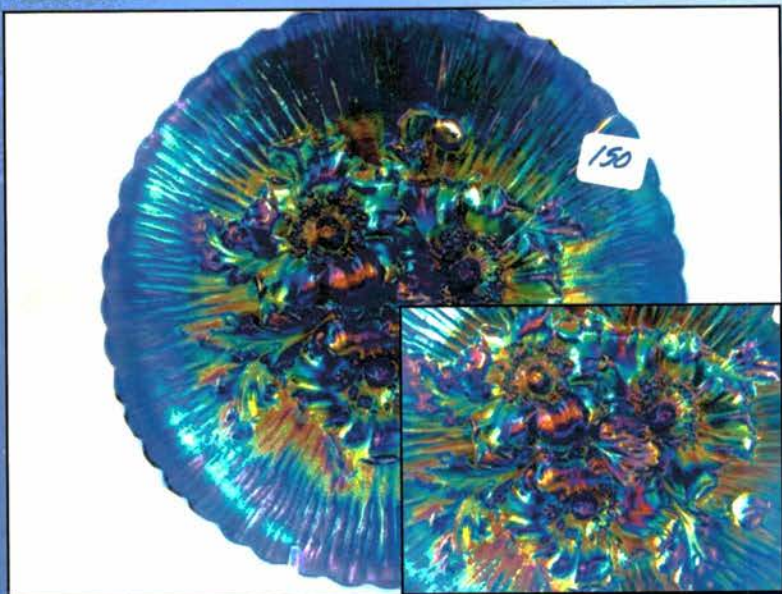
We are currently filling our calendar for 2012 especially for conventions. If you are thinking about selling your collection please give us a call and let's see what works for you! We would love to work with you on YOUR auction! Jim Wroda

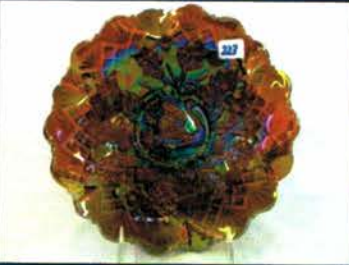
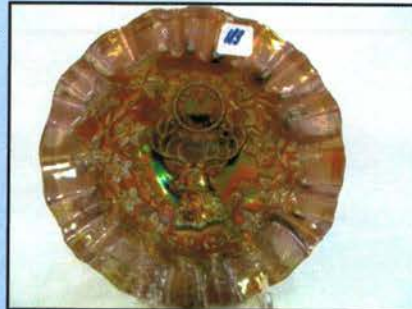
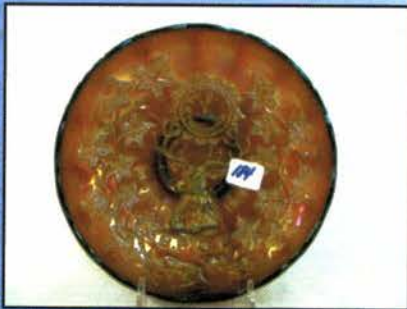
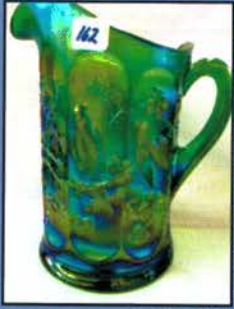
- 93 ¹⁰ Tumbler: Lt blue Beaded Spears
- 94 ¹²⁰ Tumbler: Mari Moon Print
- 95 ^{7 1/2} Tumbler: Mari Star Medallion
- 96 ¹⁵ Tumbler: Mari Wishbone
- 97 ⁵ Tumbler: purple Maple Leaf
- 98 ⁵ Mari European Tumbler
- 99 ¹⁰ Tumbler: Mari Raspberry
- 100 ³⁰ Tumbler: Blue Miniature Hobnail
- 101 ^{2 1/2} Tumbler: Mari File
- 102 ¹⁵ Tumbler: Mari Flower Web
- 103 ^{7 1/2} Tumbler: Mari Open Rose
- 104 ³⁰ Tumbler: Amber Open Rose *man*
- 105 ¹⁰ Tumbler: Mari Schlitz beer
- 106 ²⁰ Tumbler: Mari Grand Thistle
- 107 ¹⁰⁰ Tumbler: Blue Rising Sun *3*
- 108 ²⁰ Tumbler: Purple Acorn Burr
- 109 ⁴⁵ Tumbler: Mari Lucille
- 110 ¹⁰ Tumbler: Mari Springtime
- 111 ⁴⁰ Tumbler: purple Fluffy Peacock
- 112 ^{7 1/2} Tumbler: Mari Tiger Lily *-*
- 113 ^{7 1/2} Tumbler: Mari Acorn Burr
- 114 ²⁰ Tumbler: Purple 474 NICE
- 115 ¹⁵ Tumbler: Mari Flute *?*
- 116 ¹⁵ Tumbler: Mari Omnibus *green 85*
- 117 ²⁰ Tumbler: Mari Singing Birds
- 118 ⁴⁰ Tumbler: blue Blueberry
- 119 ⁵ Tumbler: Mari Beaded Shell
- 120 ²⁵ Tumbler: 6" blue Beaded Spears
- 121 ⁵ Tumbler: Mari Ribbed banded Scales
- 122 ²⁵ Tumbler: 6" flared Beaded Spears Mari
- 123 ⁵ Tumbler: Lt Mari Grape & Gothic Arches
- 124 ²⁵ Tumbler: Mari Beaded Spears
- 125 ¹⁰ Tumbler: Purple Beaded Shell
- 126 ⁴⁰ Tumbler: Mari 10 Mums
- 127 ³⁵ Tumbler: blue Grand Thistle
- 128 ⁴⁵ Tumbler: Mari Poinsettia
- 129 ^{7 1/2} Tumbler: Mari open Rose *Arched Flute*
- 130 ⁵ Tumbler: Mari smooth panel
- 131 ²⁵ Tumbler: Mari Embroidered Flowers *?*
- 132 ¹⁰ Tumbler: Mari Star Medallion
- 133 ⁵ Tumbler: Mari fashion tumbler
- 134 ²³⁵ Tumbler: Mari Band of Roses *190-316*
- 135 ¹²⁵ Tumbler: purple Circle Scroll *300-400*
- 136 ⁶⁵ Tumbler: En. Dotted Diamond & Daisy
- 137 ⁴⁰ Tumbler: elec blue Grape & Gothic Arches
- 138 ¹⁰ Tumbler: Mari Omnibus
- 139 ⁵⁰ Tumbler: Smokey lav Tiger Lily *75*
- 140 ²⁵ Tumbler: Green Butterfly & Fern
- 141 ¹⁵ Tumbler: Harvest Flower *blue green*
- 142 ²⁰ Tumbler: Green Singing Birds
- 143 ¹⁵ Tumbler: Lime? Green w/ Mari overlay Raspberry *?*
- 144 ¹⁰ Tumbler: Mari Western Thistle *24*
- 145 ²⁵ Tumbler: elec purple Field Flower *24*
- 146 ⁵ Tumbler: Mari Hobstar band
- 147 ⁵ Tumbler: Mari Floral & Grape
- 148 ³⁰ Tumbler: Green Blackberry Block *24*
- 149 ⁵ Tumbler: Mari Soda Gold
- 150 ³⁵ Tumbler: Milk Glass Lacy Dew Drop
- 151 ⁷⁵ Tumbler: white floral & Grape
- 152 ³⁵ Terry Crider Tumbler: Running Deer
- 153 ¹⁵ Terry Crider Tumbler: BO Dahlia
- 154 ⁴⁰ Terry Crider Tumbler: Aqua Opal Dahlia
- 155 ¹⁰ Terry Crider Tumbler: white Maple Leaf
- 156 ²⁵ Terry Crider Tumbler: white Running Deer
- 157 ¹⁵ Terry Crider Tumbler: Mari Dahlia
- 158 ²⁵ Terry Crider Tumbler: BO Wreathed Cherry
- 159 ¹⁰ Terry Crider Tumbler: IB Beaded Shell
- 160 ¹⁰ Terry Crider Tumbler: 5" white Geometric
- 161 ¹⁰ Terry Crider Tumbler: 5" Mari Geometric
- 162 ²⁰ Terry Crider Tumbler: Argonaut Shell
- 163 ^{12 1/2} Terry Crider Tumbler: Teardrop? White
- 164 ¹⁵ Terry Crider Tumbler: IB Inv. Thistle
- 165 ¹⁵ Terry Crider Tumbler: Amberina Geometric
- 166 ²⁰ Terry Crider Tumbler: blue Windmill
- 167 ⁵ Terry Crider Tumbler: IG Tiger lily
- 168 ⁵ Terry Crider Tumbler: IB Tiger lily
- 169 ⁵ Terry Crider Tumbler: Pink Tiger lily
- 170 ^{17 1/2} Terry Crider Tumbler: White Unknown

August 11, 2011 WWWCGA Tumbler Listing

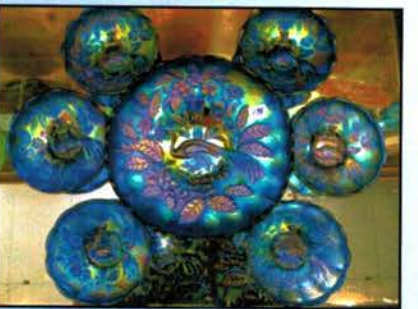
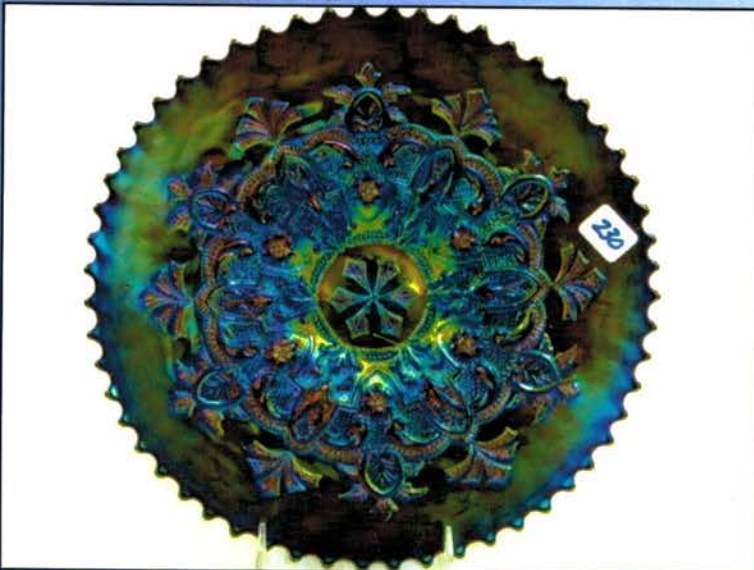
- | | | | | | |
|----|--------|---|----|--------|---|
| 1 | 95 | Tumbler: Vaseline Barbella | 47 | 10 | Tumbler: IG Enameled tumbler |
| 2 | 95 | Tumbler: Purple Inverted Thistle | 48 | 12 1/2 | Tumbler: Mari Sarita |
| 3 | 30 | Tumbler: Purple Oriental Poppy | 49 | 10 | Tumbler: Mari Fentonia |
| 4 | 50 | Tumbler: Purple Imp. Flute flared top | 50 | 15 | Tumbler: Mari 4" Whirlsaway |
| 5 | 25 | Tumbler: Mari Star & File -15-20 | 51 | 5 | Mari European Tumbler |
| 6 | 65 | Tumbler: Imp Flute Smoke -50-60 | 52 | 35 | Mari European Tumbler |
| 7 | 25 | Tumbler: Pearl Grape & Gothic Arches | 53 | 35 | Tumbler: Green Fluffy Peacock |
| 8 | 20 | Tumbler: Mari Leaf Tiers | 54 | 5 | Tumbler: Mari Jacobian w / etched stripes |
| 9 | 30 | Tumbler: Blue Nibus 4 190-180 | 55 | 15 | Mari European Tumbler |
| 10 | 15 | Tumbler: Mari Peacock at Fountain | 56 | 30 | Tumbler: purple Butterfly & Fern |
| 11 | 5 | Tumbler: Light blue w painted pond lily | 57 | 10 | Tumbler: blue Maple Leaf |
| 12 | 22 1/2 | Tumbler: coca cola | 58 | 15 | Tumbler: Mari Vineyard -15 |
| 13 | 30 | Tumbler: Mari Chrysanthemum painted | 59 | 12 1/2 | Tumbler: 474 Teal |
| 14 | 65 | Tumbler: Blue Lucille | 60 | 5 | Tumbler: Mari Maple Leaf |
| 15 | 35 | Tumbler: IG Lotus | 61 | 55 | Tumbler: Mari Heavy Iris ^{peach} _{smoke 35-50} |
| 16 | 50 | Tumbler: elec purple Open Rose | 62 | 10 | Tumbler: Mari Diamond & Daisy Cut - 35-50 |
| 17 | 55 | Tumbler: Mari painted Cherries | 63 | 45 | Tumbler: Blue Orange Tree Scroll |
| 18 | 12 1/2 | Tumbler: Blue Painted Cherries | 64 | 45 | Tumbler: Mari Fillmore NY Adv |
| 19 | 10 | Tumbler: ground Cherries | 65 | 85 | Tumbler: Purple Flute ? |
| 20 | 35 | Tumbler: purple G&C | 66 | 5 | Tumbler: Mari Coin Dot |
| 21 | 12 1/2 | Tumbler: Mari painted pond lily | 67 | 10 | Tumbler: Mari Waterlily- Fenton |
| 22 | 105 | Tumbler: elec purple Stippled G&C | 68 | 65 | Tumbler: Mari Strawberry Scroll |
| 23 | 10 | Tumbler: horehound G&C ? | 69 | 30 | Tumbler: Mari Buzz Saw & File -150 + |
| 24 | 10 | Tumbler: Mari Oriental Poppy | 70 | 10 | Tumbler: ^{green} Mari Field Flower |
| 25 | 45 | Tumbler: Purple Greek Key | 71 | 7 1/2 | Tumbler: Mari Tiger Lily |
| 26 | 65 | Tumbler: Mari Dahlia | 72 | 5 | Tumbler: Mari Imp Grape |
| 27 | 5 | Tumbler: Mari etched vining? 95-90 | 73 | 20 | Tumbler: Green Tiger Lily |
| 28 | 105 | Tumbler: Inverted Thistle ^{Mari} 250-300 | 74 | 5 | Mari European Tumbler |
| 29 | 5 | Tumbler: Mari Diamond & Grapes | 75 | 45 | Tumbler: Smokey Lav Imp Grape. Leaning more to lav. ⁷⁵ |
| 30 | 10 | Tumbler: Mari Forty Niner ? | 76 | 5 | Tumbler: Mari Grape & Gothic Arches ^{Arbor} |
| 31 | 7 1/2 | Tumbler: Mari Calcutta & dots | 77 | 5 | Tumbler: Mari Bouquet |
| 32 | 12 1/2 | Tumbler: Mari Ribbed Band & Scales | 78 | 50 | Tumbler: Mari Diamond Lace ^{cracked} |
| 33 | 15 | Tumbler: Blue Iris w/ Prism Band | 79 | 55 | Tumbler: Nwood painted Apple Blossom |
| 34 | 12 1/2 | Tumbler: Mari Fantasy Flower | 80 | 15 | Tumbler: IG Stretch ^{Pastel Panels} |
| 35 | 15 | Tumbler: Mari Ribbed Band & scales | 81 | 10 | Tumbler: Mari Grape & Gothic Arches |
| 36 | 27 1/2 | Tumbler: Blue Stork & Rushes | 82 | 35 | Tumbler: Mari Buzz Saw & File juice |
| 37 | 30 | Tumbler: Imp. Helios Green Flute ? | 83 | 25 | Tumbler: Mari 474 |
| 38 | 15 | Tumbler: Mari Ribbed Band & Scales | 84 | 10 | Tumbler: Mari Robins |
| 39 | 15 | Tumbler: Mari Whirlsaway | 85 | 20 | Tumbler: purple Heavy iris w/ adv |
| 40 | 30 | Tumbler: Mari Stippled G&C | 86 | 12 1/2 | Tumbler: Blue Bouquet |
| 41 | 10 | Tumbler: Mari painted Crocus | 87 | 40 | Tumbler: elec green Grape & Gothic Arches |
| 42 | 50 | Tumbler: Imp elec purple Flute | 88 | 12 1/2 | Tumbler: Mari Ribbed band Scales |
| 43 | 35 | Tumbler: blue Western Thistle | 89 | 35 | Tumbler: Smoke Scales ^{Woda Todd} |
| 44 | 5 | Tumbler: Teal open Rose NOT IRID | 90 | 30 | Tumbler: Mari Flute |
| 45 | 5 | Mari European Tumbler | 91 | 7 1/2 | Tumbler: Mari Crab claw |
| 46 | 12 1/2 | Tumbler: Blue Tiger Lily- Euro | 92 | 0 | Tumbler: Green Acorn Burr _{olive} |

2011 WWWCGA Convention Auction Saturday, August 13th 2011 at 9:30 AM





RARE Unlettered 3-1 edge Courthouse bowl



Auto Show and Outdoor Concert

5239 ST RT 49 S Greenville, Ohio

(Greenville Auction Center on the corner of RT 127 & RT 49)

Friday, August 12th 2011

5:30 to 9:00

Trophy's awarded to 1st, 2nd, 3rd
place and "Best of Show"

Every car receives a
special plaque for entry
\$10.00 registration fee, of which
100% goes to local charity.

Guest Judges:

Mike Mills -

Church Village, England



Gorden Bergman -
Milton, Ontario Canada

Gary Mikel -
Arcanum, Ohio

50/50 drawing

Each entry will receive 2 free tickets to the Hog Roast/
Chicken BBQ with all the trimmings & beverages!

This is limited to the first 50 registrations! Call now to reserve your spot.
This will be the coolest yet Hottest show around.



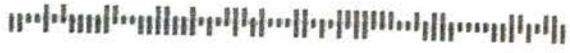
Jim Wroda Auction Services, LTD
5239 ST RT 49 S
Greenville, Ohio 45331
937.548.7835
www.jmwrodaauction.com

18 300

PRESORTED
FIRST CLASS MAIL
U.S. POSTAGE
PAID
CELINA, OH
PERMIT NO. 99

first class postage paid

11-12*****AUTO**MIXED AADC 434
Lee Markley
PO Box 306
502 N Broadway St
Mentone IN 46539-9531



Volume 8, Series 2011

Let's go Cruisin' to Greenville, Ohio

**WWWCGA Carnival Glass Convention and Classic Car Show
August 10th thru August 13th 2011**

*We are NOW Booking collections for 2012 Carnival Glass Conventions!
Give us a call, We would love to work with YOU on YOUR auction!*