

**International Carnival Glass Association  
2011 Convention Auction**

OPEN TO THE PUBLIC

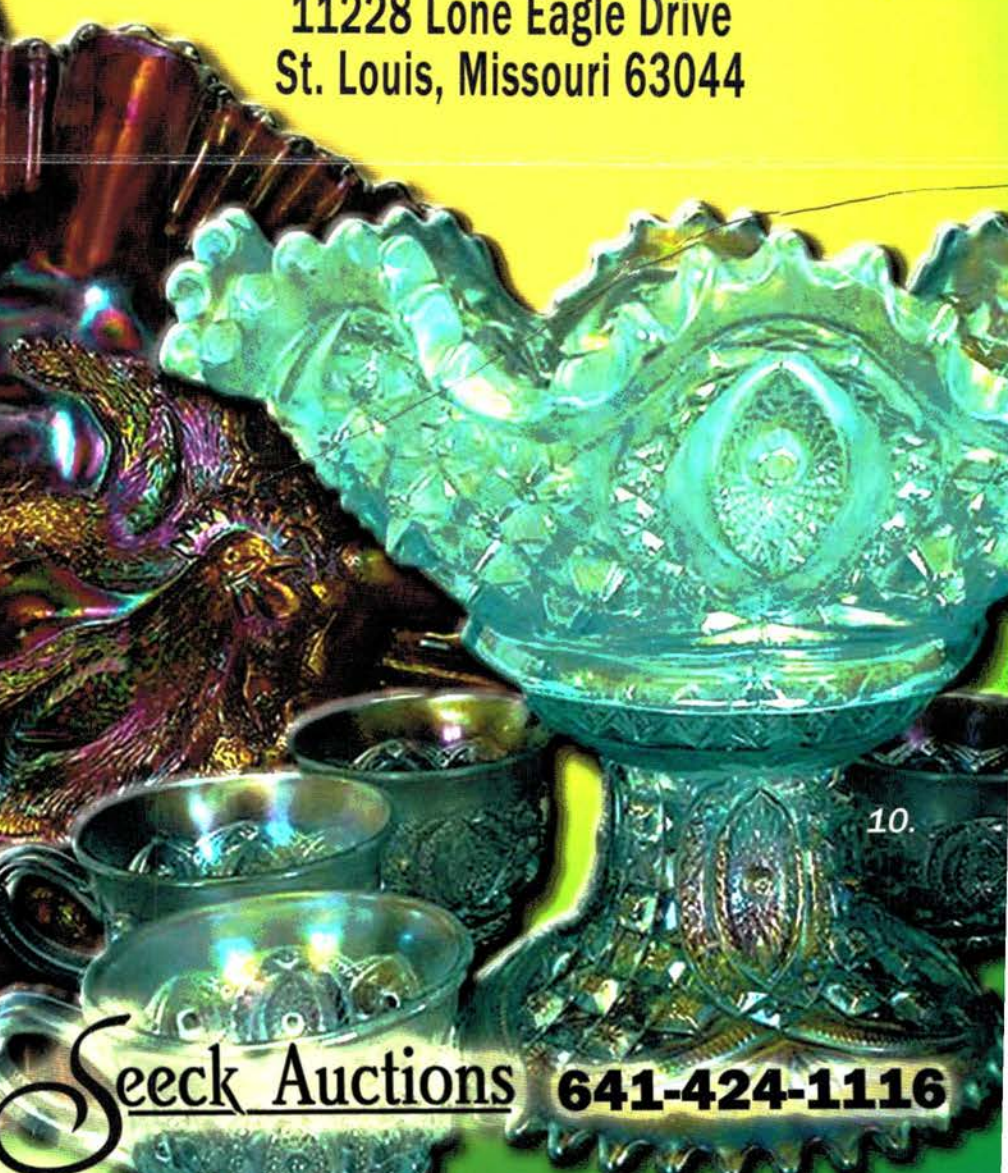
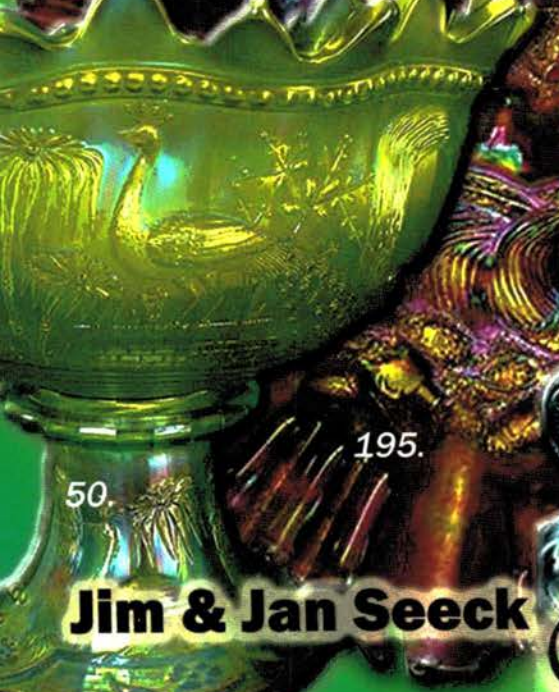
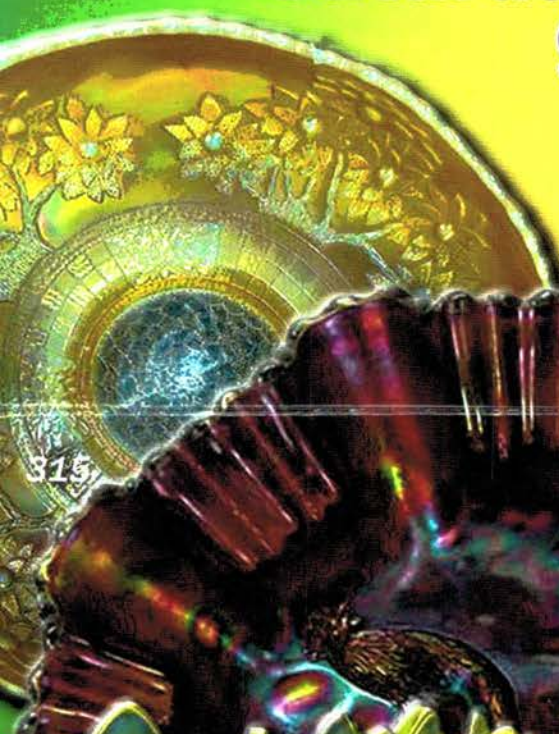
# AUCTION

**Saturday, July 16, 2011  
9:30 a.m.**

*The  
Grogan  
Collection*

170.

**Crowne Plaza Bridgport Hotel--St. Louis Airport  
11228 Lone Eagle Drive  
St. Louis, Missouri 63044**



195.

50.

**Jim & Jan Seeck**

**Seeck Auctions**

**641-424-1116**

# ICGA Convention Auction

## SATURDAY, JULY 16, 2011— 9:30 A.M.

### *The Grogan Collection*

Preview: Time to be determined at Convention

**Crowne Plaza Bridgton Hotel —St. Louis Airport**

**NO BUYER'S PREMIUM**

**OPEN TO THE PUBLIC**

**For an Online Auction Catalog, Check our Website: [www.seeckauction.com](http://www.seeckauction.com)**

**Online absentee bidding closes Friday, July 15, at 6 p.m. CST**

The ICGA convention auction this year will feature the Darlene and Jim Grogan collection from California. They have collected for quite some time and have decided it was time to scale down. Darlene loved punch sets and there are some fabulous sets in the auction. The glass has outstanding iridescence and a good variety of shapes and colors for everyone. We've added another small collection to round out the sale. Meet in St. Louis for a fine time!

**Convention info:** If you're planning to stay at the hotel, for reservations please call (314)291-6700. Ask for in-house reservations and mention the "ICGA" or "Carnival Glass" Convention to get the special rate of \$95 per night. If you have questions about the convention, contact President Brian Pitman at: 785-478-9004 or email: [bpitman@woodslan.com](mailto:bpitman@woodslan.com)

**Visit the ICGA Website: <http://www.internationalcarnivalglass.com>**

#### **AUCTION INFORMATION**

**Terms:** Cash or Check, VISA and MasterCard accepted w/proper ID. **4% Clerking Fee** on all purchases except for payment of cash or check. Announcements made day of sale take precedence over any printed information.

#### **ABSENTEE BIDDING: We have 3 options for you**

**1) WRITTEN OR PHONE:** If you **DO NOT** have internet access or access to our website, you can: Call us by phone to enter your bids at (641) 424-1116 **OR** By sending the numbers of the item(s) desired and the amount bid on each to: Seeck Auctions, PO Box 377, Mason City, Iowa 50402. (The mail has not been very dependable. We would prefer you call us with your bids rather than send them in a letter.)

- All written and called in bids will be entered into the online catalog by us.
- **Written and Phone Absentee Deadline:** Have all bids in by **Wednesday, July 13.**

**2) ONLINE CATALOG:** Enter your bids from our website into our online catalog through the Auction Flex system. When you get to the online catalog, you will need to login as a bidder. For the first time you will need to **set up your account** by creating a user name and password. This will include filling out a form with your name, address, etc. You will also need to **register for the auction** which will ask you to enter a valid credit card number. This card will be validated by a \$1 charge to your card. This will only happen once and you will now be able to enter bids through our online catalog by just logging in with your user name and password. You will use this user name and password for all our auctions. You are not required to pay by credit card if you are successful. This is just a safeguard for us if someone does not pay. We will let you know what you owe us through an email and you can decide how you would like to pay us.

- *An exciting advantage of entering your bids online yourself*, is the option to be notified by email if you are outbid on an item. You will know when you are outbid on an item and you can increase your bid on that item or bid on something else. **There will be a cutoff date and time for entering your bids online.** After this time has passed, you will not be able to enter your bids from our online catalog.
- *Remember*, that just because you are the high bidder in the online catalog, this does not mean you have won the item. Your bid will still need to beat the floor bidders and live phone bidders. This system will run our absentee bids just as we did before. You will still be able to buy the item lower than your online bid unless someone on the floor bids you higher.

**3) LIVE PHONE BIDDING:** Available on pieces with an estimated sale price of \$500 or more. If you would like to participate in live phone bidding, contact us by **the Tuesday before the auction, July 12.** We will need to know the lot# and the phone number that you can be reached at on the day of the auction. We will also need your home phone number if different than the above number. Please call with questions: 641-424-1116.

❖ **There is a \$7 handling charge for each successful bid. Shipping and insurance charges are additional.** bidders will be notified by phone/email if their bid(s) are successful. This will be done 1 - 3 days after the auction.

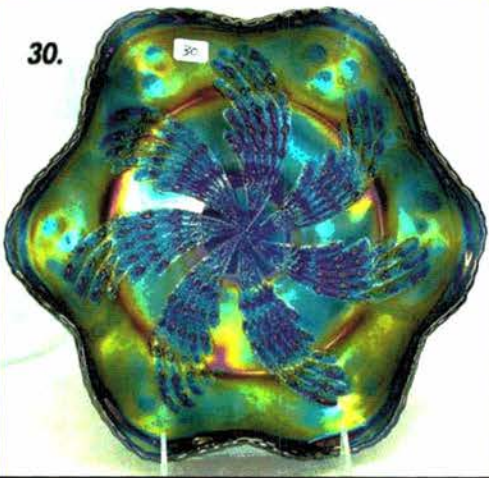
❖ **If you do not receive an item that sold for less than your bid, assume we cancelled your bid because the item had a severe manufacture problem, damage or was not listed correctly.**

**BID INCREMENTS:** \$1 - \$100/\$5      \$100 - \$200/\$10      \$200 - \$700/\$25      \$700 - \$1,500/\$50  
 \$1,500 - \$3,000/\$100      \$3,000+ Auctioneer's Discretion

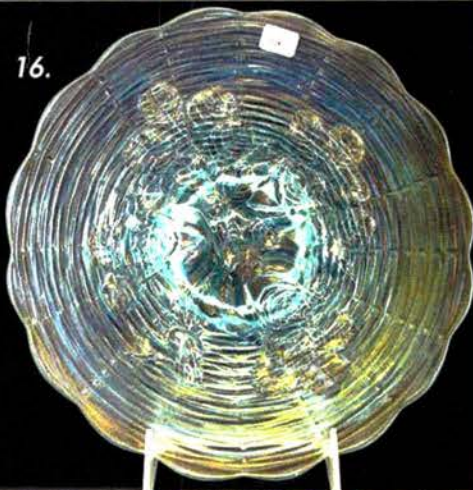
- 210  
85  
45  
120  
45  
80  
300  
45  
65  
4500
1. Florentine #449 8 1/2" candlesticks - lavender
  2. Florentine #449 8 1/2" candlesticks - ice green
  3. Colonial #695 8 1/2" candlesticks - russet
  4. Colonial #695 8 1/2" candlesticks - celeste blue
  5. Northwood's #657 8 1/2" candlesticks - russet
  6. Diamond Spindle 8 3/4" candlesticks - celeste blue
  7. Trumpet Twist 6 10 1/2" candlesticks - celeste blue
  8. Florentine #449 10 1/2" candlesticks - celeste blue
  9. Lacy Dewdrop cvd butter dish - pearlized milk glass
10. **CARNIVAL GLASS MEMPHIS 8 PC. FRUIT BOWL SET- ICE BLUE - VERY RARE & HIGHLY DESIRABLE, SUPER NICE SET**
- 1000
11. **CARNIVAL GLASS MEMPHIS 8 PC. FRUIT BOWL SET - WHITE - EXTREMELY RARE & VERY NICE, FROSTY**
- 350
12. **Carnival Glass Memphis 8 pc. fruit bowl set - purple - scarce set & nice**
- 45  
80  
2000
13. Grape & Cable spt ftd 9" plate - green - pretty
  14. M'burg Holly Whirl 9" ruffled bowl-marigold - satin, pretty
  15. **Rose Show 9" plate - lime green - extremely rare color for this very desirable plate, nice!**
- 675
16. **Rose Show 9" plate - ice blue - rare plate, another nice one**
- 2100
17. **Rose Show 9" plate - blue - electric & beautiful, the roses are incredible**
- 400  
80  
200
18. **Rose Show 9" plate - marigold - very pretty, scarce**
  19. Lotus & Grape 3 in 1 edge bowl - blue - pretty
  20. **Stippled Fruits & Flowers bonbon - green - extremely rare color to be stippled**
- 135
21. **Stippled Fruits & Flowers bonbon - blue - electric, super, small manufacture split in base**
- 70  
900
22. **Stippled Fruits & Flowers bonbon - marigold - super pretty**
  23. **Luster Rose water pitcher - purple - spectacular, a beauty, rare pitcher**
- 105  
2000
24. Luster Rose tumbler - purple
  25. **Homestead chop plate - purple - super, super example with great mold work & fantastic irid.!**
- 675
26. **Homestead chop plate - white - pretty stretchy irid., a neat plate**
- 180  
600
27. **NUART Homestead chop plate - smoke - very rare color, nice**
  28. **NUART Homestead chop plate - marigold - pretty, radium looking irid.**
- 40  
2000
29. Bells & Beads crimped edge 7" bowl - peach opal
  30. **Fantail ftd ruffled bowl - blue - electric is an understatement, fantastic irid., this one will stick out in your collection**
- 70  
275
31. M'burg Blackberry Wreath 7" 3 in 1 edge bowl - amethyst - radium, nice
  32. **Isaac Benesch & Sons adv. ruffled bowl-amethyst-nice**
- 50  
25  
220
33. Heart & Vine ruffled bowl - blue - electric & super
  34. Open Rose rose bowl - amber - scarce, nice
  35. **MILLERSBURG WILD ROSE KEROSENE LAMP - MARIGOLD - 11" HIGH, 6 3/8" BASE, SUPER, A BEAUTIFUL LAMP**
- 45
36. Smooth Rays 10" ruffled bowl - peach opal - has Jeweled Heart back, pretty
- 230
37. **Grape & Gothic Arches 7 pc. water set - blue - scarce, very nice**
- 130
38. Grape & Gothic Arches 6 pc. water set - marigold - lots of pink irid. on pitcher
- 35
39. Concave Flute banana boat shaped dish - aqua - rare shape & color
- 600
40. **Peacocks 9" plate w/ribbed back - ice blue - rare color, a beauty**
- 550
41. **Peacocks 9" plate w/ribbed back - purple lavender - super example, very pretty plate!**
- 625  
200
42. **Peacocks 9" plate w/ribbed back - blue - electric, super**
  43. **Peacocks 9" plate w/ribbed back - marigold - pretty, lots of yellow irid.**
- 220  
375
44. Peacocks 9" plate w/ribbed back - ice green - scarce, nice
  45. **Peacocks 9" plate w/plain back - white - very, very pretty example**
- 70  
50  
60  
170
46. Kittens 4 sides up dish - marigold
  47. Kittens cup - marigold
  48. Kittens saucer or plate - marigold
  - 48a. Kittens 2 sides up dish - light amethyst base glass, has marigold irid.
- 90  
2600
49. Western Daisy dome ftd 9" bowl - peach opal
  50. **PEACOCK AT THE FOUNTAIN 6 PC. PUNCH SET - LIME GREEN - EXTREMELY RARE, LIKE ALL OTHERS, HAS ICE GREEN BASE, 2 CUPS HAVE DAMAGE**
- 3700
51. **PEACOCK AT THE FOUNTAIN 10 PC. PUNCH SET - WHITE - FROSTY, SUPER RARE SET**
- 45  
850
52. Four Flowers 6" plate - peach opal
  53. **Covered Frog - ice green - scarce, a highly desirable novelty**
- 100  
225  
295
54. Blackberry Open Edge ruffled basket - green - super pretty
  55. **Zippered Loop kerosene lamp - marigold - 10 1/2" tall, 6" base, nice**
  56. **Zippered Loop kerosene lamp - smoke - 9" tall, 5 1/4" base, super pretty**
- 250
57. **Zippered Loop kerosene lamp - marigold - 8" tall, 4 3/4" base, nice**
- 165  
135  
1000
58. Octagon 4 pc. table set - marigold
  59. Birds & Cherries card tray shaped bonbon - green
  60. **1914 Parkersburg Elks 7" plate - blue - rare & very pretty, nice piece!**
- 140  
190  
190  
50
61. Rococco vase - smoke - nice
  62. Thistle banana boat - green - nice
  63. Thistle banana boat - blue - pretty
  64. Thistle CRE bowl - green
- 1200  
325  
110  
60  
40  
725
65. **Plaid ruffled bowl - red - very rare & highly desirable**
  66. **Plaid ruffled bowl - green - rare color**
  67. Plaid ruffled bowl - marigold - nice
  68. Starfish bonbon - purple
  69. Starfish bonbon - peach opal
  70. **Dandelion 7 pc. water set - purple - super nice set, hard to find tankard**
- 625  
225  
450
71. **1911 Atlantic City Elks 7" plate - blue - very scarce & nice**
  72. **Diamond Point 11" vase - ice blue - scarce**
  73. **Diamond Point 11" vase - smoke - very rare and unusual color, nice**
- 140  
1700
74. Diamond Point 10" vase - purple - nice
  75. **WIDE PANEL EPERGNE - WHITE - WHITE ARE TOUGH TO FIND, HAS PRETTY IRID.**
- 650  
110
76. **Wide Panel epergne - marigold - super pretty, scarce**
  77. Four Seventy Four milk pitcher - green - minor rough spot on lip
- 100
78. M'burg Fleur De Lis dome ftd 3 in 1 edge bowl - marigold - satin & nice, has typical minor nick on saw tooth edge of base
- 170  
2600
79. Leaf Rays nappy - purple - super pretty
  80. **HEARTS & FLOWERS RUFFLED COMPOTE - SMOKE - EXTREMELY RARE COMPOTE, CAN'T REMEMBER EVER SELLING THIS COMPOTE IN SMOKE, IS PRETTY TOO!**
- 250  
50  
375
81. **Hearts & Flowers ruffled compote - ice blue - scarce, nice**
  82. **Hearts & Flowers ruffled compote - white - nice**
  83. **Hearts & Flowers ruffled compote - aqua opal - scarce, a pretty one!**
- 275
84. **Hearts & Flowers ruffled compote - blue - electric & nice**

- 175 85. Hearts & Flowers ruffled compote – purple - super pretty
- 140 86. Hearts & Flowers ruffled compote - marigold - nice
- 220 87. Covered box w/enamelled decoration - marigold - 3 1/4" diameter, cute piece
- 230 88. Orange Tree loving cup - green - very scarce color, nice
- 55 89. Basketweave Open Edge ruffled basket – aqua - has marigold overlay
- 235 90. Persian Medallion 9" plate – marigold - very scarce plate & nice
- 150 91. Persian Medallion 9" plate - blue - scarce
- 45 92. Holly CRE JIP hat – blue
- 300 93. Paneled Dandelion 7 pc. tankard water set - amethyst - very nice set, one tumbler has minor nick
- 35 94. Fenton Peacock at Urn ruffled compote - blue
- 500 95. N's Corn vase w/plain base – marigold - scarce color, pretty
- 180 96. N's Corn vase w/stalk base - ice green - scarce
- 190 97. N's Corn vase w/plain base – white - has super irid.
- 240 98. Tree of Life salt & pepper shakers – smoke - very rare set
- 190 99. Poinsettia milk pitcher - marigold
- 400 100. Broken Arches ruffled 6 pc. punch set – purple- extremely rare set ruffled, has couple of minor nicks inside bowl
- 190 101. Broken Arches ruffled 10 pc. punch set – marigold - very hard to find ruffled, nice
- 70 102. Inverted Strawberry 9" round bowl – green - signed Nearcut, minor pin point on edge
- 185 103. Enamelled Cherry & Little Daisies 8 pc. water set - blue - maybe the best pitcher I've ever seen
- 75 104. M'burg Whirling Leaves ruffled bowl - green
- 530 105. Tornado small size vase – green - super pretty
- 130 106. Tornado small size vase – marigold - base has been polished
- 350 107. Tornado small size vase - purple - pretty
- 125 108. Diving Dolphins rose bowl – marigold - minor nick on foot
- 150 109. Australian Swan ruffled sauce - dark or purple
- 300 110. M'burg Seacoast pin tray – green - rare color, nice
- 425 111. M'burg Seacoast pin tray – amethyst - scarce
- 165 112. N's Thin Rib 12" vase - sapphire - rare color, minor pinpoint on base
- 75 113. N's Thin Rib 9" vase – purple - super pretty
- 35 114. N's Thin Rib 10 1/2" vase - green
- 425 115. Singing Birds 7 pc. water set – green - scarce, nice, highly desired set
- 135 116. Fostoria #1723 tri-pod stemmed sundae marigold - rare
- 250 117. Panther ftd ruffled master berry bowl – blue - super pretty
- 30 118. Dugan Cherries ftd ruffled bowl - purple - chip on side of foot
- 55 119. Columbia ruffled compote – marigold - made by Imperial
- 650 120. Stippled Three Fruits spt ftd ruffled bowl - aqua opal - pastel & very pretty
- 155 121. Stippled Three Fruits spt ftd ruffled bowl - purple - pretty
- 35 122. Lattice & Grape tankard water pitcher - marigold -dark & super
- 10 123. Lattice & Grape tumbler – marigold
- 95 124. Concave Diamonds tumbler – vaseline - scarce tumbler
- 1600 125. HEAVY IRIS TANKARD WATER PITCHER- PEACH OPAL - EXTREMELY RARE PITCHER, BELIEVED TO BE THE ONLY ONE KNOWN
- 45 126. Double Stemmed Rose dome ftd ruffled bowl - amethyst - has stretchy irid., almost satiny
- 350 127. Oriental Poppy tankard water pitcher – marigold - dark, super
- 245 128. Holly 9" plate – amethyst - scarce, nice
- 45 129. Holly 9" plate - blue - missing some irid.
- 130. Stippled Grape & Cable humidor - reneger blue - very rare humidor, has one sponge prong missing
- 131. Stippled Grape & Cable humidor - marigold - absolutely super, covered with pink irid.
- 132. Sunflower spt ftd ruffled bowl – green - super pretty, has manufacture open bubble on foot
- 70 133. Sunflower spt ftd ruffled bowl – purple
- 135 134. Persian Medallion ruffled bonbon – red - scarce & desirable, epoxy on edge
- 240 135. Shell & Sand 9" plate – purple - fabulous, very rare plate!
- 275 136. Brocaded Acorn cornucopia console bowl and pair of candlesticks - ice blue
- 205 137. Brocaded Palms ftd console bowl & candlesticks - pink
- 135 138. Brocaded Palms mayonnaise bucket - pink
- 350 139. King Spider hatpin - dark - rare hatpin, nice
- 675 140. Dozen Roses ftd round bowl – purple - very rare bowl, nice
- 65 141. N's Peacock at Urn IC sauce - purple - super pretty irid.
- 70 142. Pansy ruffled bowl – purple - electric, super
- 60 143. Pansy low ruffled bowl or plate – lavender -fantastic, very flat
- 170 144. Pansy low ruffled bowl or plate – smoke - scarce, pretty
- 350 145. Butterfly & Fern 5 pc. water set – blue - very pretty, nice set
- 210 146. Butterfly & Fern 7 pc. water set - marigold
- 85 147. Lattice & Points 8" vase - purple
- 35 148. Miniature coal bucket - green - scarce
- 45 149. Grape Delight rose bowl - purple
- 4600 150. ACORN BURRS 8 PC. PUNCH SET - WHITE-SUPER PRETTY SET & HIGHLY DESIRABLE
- 1600 151. Acorn Burrs 8 pc. punch set - green - as nice of a set we have sold, some may call it emerald
- 95 152. Ripple 7 1/4" vase - purple - has 2 3/8" base
- 130 153. Ripple 6 1/2" vase – green - has 2 3/8" base
- 20 154. Ripple 7 1/4" vase – marigold - has 2 3/8" base
- 550 155. Creole ftd 8 1/2" vase – marigold - extremely rare, have never sold another, neat piece
- 120 156. Fruits & Flowers bonbon - lime green - minor nick on base, rare color
- 240 157. Fruits & Flowers bonbon - ice green - base has been slightly polished around outside edge
- 600 158. Fruits & Flowers bonbon - ice blue - very pretty
- 300 159. Fruits & Flowers bonbon - aqua opal - fantastic pastel example
- 105 160. Fruits & Flowers bonbon - aqua opal - butterscotch, another super one!
- 161. Fruits & Flowers bonbon – white - scarce, nice
- 125 162. Fruits & Flowers bonbon - lavender - scarce, pretty!
- 85 163. Fruits & Flowers bonbon - green - scarce
- 55 164. Fruits & Flowers bonbon – purple - pretty
- 115 165. Fruits & Flowers bonbon - blue - electric, pretty
- 140 166. Fruits & Flowers bonbon - marigold - the best, it is gorgeous!
- 310 167. Two Flowers lg size ftd IC shaped bowl – blue - super, very pretty!
- 250 168. Brooklyn Bridge 10 ruffled bowl - marigold - as pretty as they get
- 105 169. August Flower gas lamp shade - marigold
- 2300 170. SPECTOR'S DEPARTMENT STORE/HEART & VINE 9" PLATE - MARIGOLD - NOT ONLY IS IT DARK AND ABSOLUTELY SUPER, IT MAYBE THE ONLY ONE I'VE EVER SEEN WITHOUT THE STRAW MARK THROUGHOUT THE WORDS, FABULOUS PLATE!
- 115 171. Beaded Cable rose bowl - aqua opal - nice
- 45 172. Beaded Cable rose bowl - purple
- 410 173. Beaded Cable rose bowl - marigold - nice
- 70 174. Lions ruffled bowl - marigold
- 1900 175. IMPERIAL GRAPE WATER CARAFE - EMERALD GREEN - FANTASTIC & VERY RARE
- 90 176. Imperial Grape water carafe - purple - nice
- 45 177. Scotch Thistle crimped edge ruffled compote - green
- 425 178. Horse Medallion ftd nut bowl - red slag - very scarce color, nice

30.



16.



17.



11.



95.



53.



25.



51.



105.



15.



70.



23.



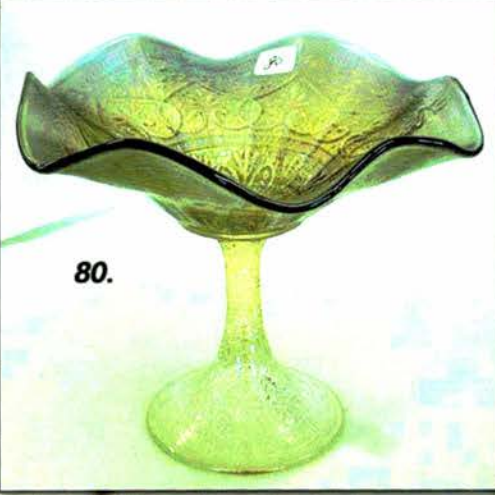
41



135.



80.



90.



100.



110.



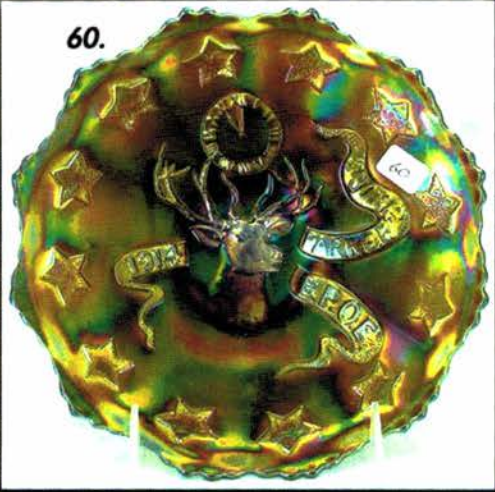
180.



140.



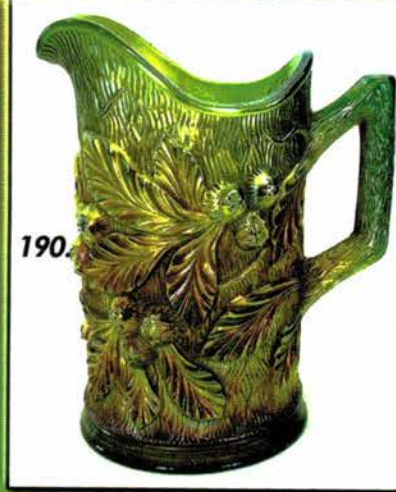
60.



159.



190.



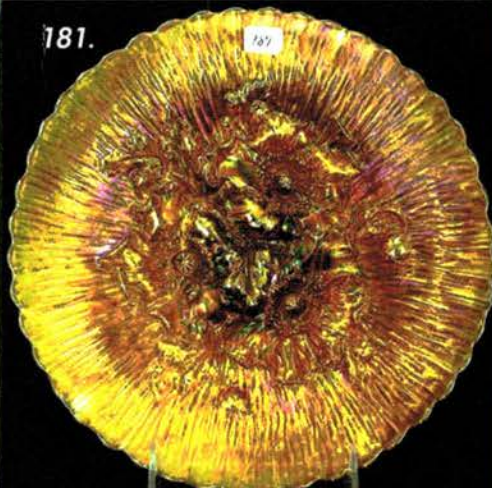
155.



183.



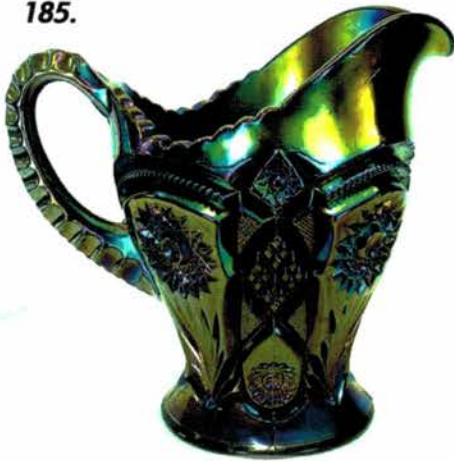
181.



188



185.



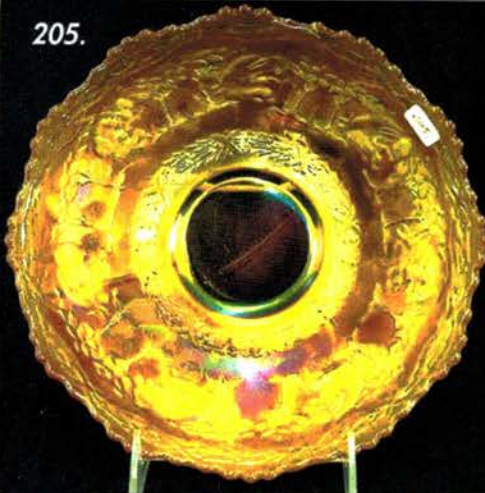
220.



200.



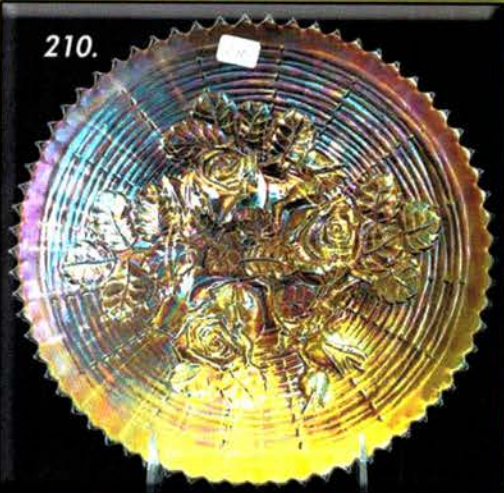
205.



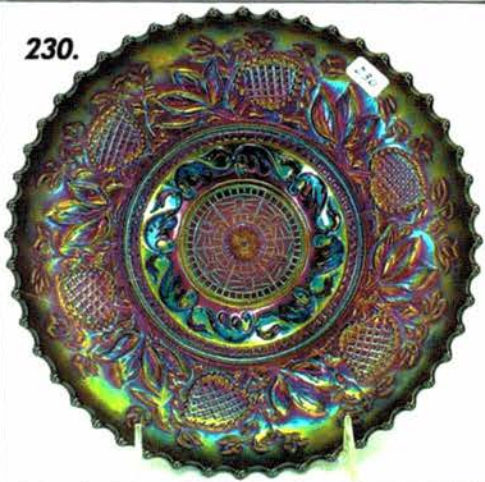
207.



210.



230.

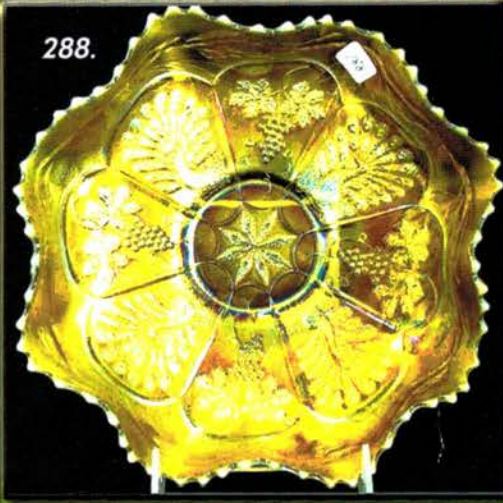
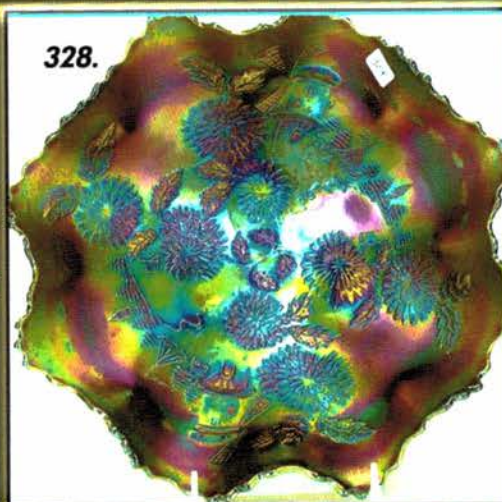
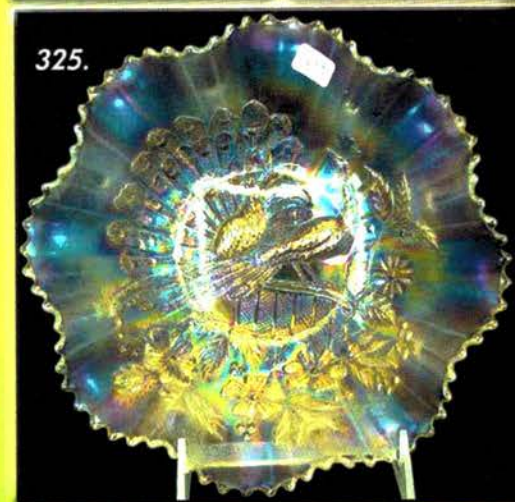


215.



228.







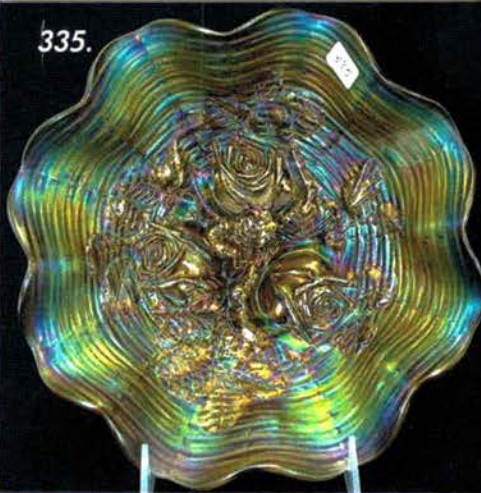
- 165 179. Horse Medallion ftd nut bowl - blue - very pretty
- 1000 180. **Poppy Show 9" plate - purple - very pretty plate, highly desirable**
- 700 181. **Poppy Show 9" plate - marigold - dark, very pretty scarce**
- 25 182. Scroll Embossed 8" round bowl - purple - has plain back, pretty
- 650 183. **Ribbon Tie 3 in 1 edge bowl - blue - spectacular, a super piece**
- 240 184. Fine Cut & Roses rose bowl - emerald green - fabulous irid., typical polished feet
- 1000 185. **Fashion water pitcher - purple - super pretty, very rare**
- 375 186. **Fashion tumbler - purple - super, an extremely rare tumbler**
- 400 187. Grape & Cable Variant 9" plate w/BW back - purple - fantastic
- 825 188. **M'burg Courthouse IC shaped bowl - amethyst - super nice**
- 110 189. Beaded Bullseye 11" vase - purple - nice
- 300 190. **Acorn Burrs water pitcher - green - scarce, nice**
- 85 190a. Acorn Burrs tumbler - green
- 105 191. Field Thistle 9" plate - marigold - pretty, rare
- 250 192. **Grape & Cable turned in centerpiece bowl - purple - scarce**
- 115 193. N's Bushel Basket - aqua opal - scarce
- 160 194. N's Bushel Basket - lime green - nice, hard to find color
- 630 195. **FARMYARD 3 IN 1 EDGE BOWL - PURPLE - IRID. IS SPECTACULAR! A SUPER, SUPER pretty bowl, one point has a minor spot of epoxy.**
- 75 196. Stag & Holly lg size IC shaped ftd bowl - lavender - rare color
- 155 197. Drapery rose bowl - aqua opal - nice opal
- 150 198. **Loganberry vase - marigold - dark, pretty**
- 170 199. M'burg Cosmos 8 ruffled sauce - green - rare shape for these
- 1450 200. **Carnival Glass Imperial Grape 5 pc. punch set - purple - spectacular blue irid., beautiful**
- 140 201. Carnival Glass Imperial Grape 12 pc. punch set - marigold - pretty set
- 110 202. Fisherman's mug - marigold - super pretty example
- 325 203. Fircone 11" vase - marigold - scarce
- 115 204. Leaf Columns 6" squatty vase - purple - pretty
- 400 205. **Peter Rabbit IC shaped bowl - marigold - very rare bowl & highly desirable, nice**
- 325 206. Four Pillars 7" squatty vase - blue - super rare & pretty vase, sliver on one toe, typical
- 1000 207. **Heavy Grape chop plate - purple - gorgeous**
- 105 208. Heavy Grape 8" plate - purple - another pretty one
- 55 209. Grape Arbor ftd fruit bowl - marigold
- 300 210. **Rose Show Variant 9" plate - marigold - rare plate & very nice**
- 150 211. M'burg Nesting Swan ruffled bowl - green - radium, scarce
- 190 212. M'burg Nesting Swan ruffled bowl - amethyst - satin, nice
- 105 213. M'burg Nesting Swan ruffled bowl - marigold - satin
- 85 214. Stag & Holly lg size ftd ruffled bowl - blue - super nice
- 775 215. **N's Peacock at Urn master IC bowl - ice blue - super pretty irid., scarce**
- 275 216. M'burg Strawberry Wreath ruffled sauce - green - radium w/spectacular blue irid.
- 170 217. **Embroidered Mums ruffled bowl - purple - scarce, nice**
- 200 218. **Embroidered Mums ruffled bowl - marigold - dark with lots of pink, really pretty**
- 70 219. Drapery 8 1/2" vase - lime green - minor nick on bottom of one toe
- 400 220. **Morning Glory 17" funeral vase - purple - super pretty**
- 180 221. Grape & Cable hatpin holder - green - nice
- 175 222. Grape & Cable hatpin holder - purple - always desirable
- 110 223. Grape & Cable hatpin holder - marigold
- 45 224. Pony ruffled bowl - amethyst - scarce color, minor nick on top edge of base
- 2-100 225. **BUTTERFLY & TULIP SQUARE SHAPED FTD BOWL - PURPLE - OUTSTANDING, THE BUTTERFLY IS SQUARE TO THE PIECE, HARD TO FIND**
- 85 226. Wishbone ftd ruffled bowl - green - nice
- 45 227. Wishbone ftd ruffled bowl - marigold
- 500 228. **Windmill milk pitcher - purple - covered in blue irid., a super one!**
- 125 229. Windmill milk pitcher - marigold - nice
- 225 230. **Fanciful IC shaped low bowl - purple - fantastic irid.!**
- 525 231. **Beaded Shell 7 pc. water set - purple - very hard set to get**
- 325 232. **Holly ruffled bowl - brick red - a very nice looking bowl**
- 170 233. **Holly 3 in 1 edge bowl - aqua - scarce color, pretty**
- 40 234. Holly 6 ruffled bowl - blue
- 400 235. **Twigs crimped edge miniature vase - purple - scarce & highly desirable, these are cute**
- 225 236. **Windmill water pitcher - smoke - very rare color & pretty**
- 70 237. Little Flowers 10" IC shaped bowl - blue - pretty
- 115 238. M'burg Peacock at Urn 3 in 1 edge shotgun bowl - green - minor pinpoint on edge
- 65 239. Round Up low ruffled bowl - white - pretty
- 325 240. **Persian Medallion chop plate - blue - very nice example, scarce**
- 115 241. Leaf & Beads rose bowl - aqua opal - pastel, pretty
- 105 242. Leaf & Beads rose bowl - purple - has Sunflower interior
- 250 243. Diamond Lace water pitcher - purple - super pretty
- 40 244. Diamond Lace tumbler - purple - pretty
- 180 245. **Poppy Show vase - marigold - dark & nice**
- 80 246. Windmill dresser tray - marigold - can't imagine a prettier one
- 130 247. **Victorian large ruffled bowl - purple - as pretty as they get**
- 75 248. Feathered Serpent CRE bowl - green - scarce with this edge
- 60 249. Dragon & Lotus ruffled bowl - blue
- 3100 250. **FASHION 6 PC. PUNCH SET - SMOKE - SUPER PRETTY, AN EXTREMELY RARE SET**
- 400 251. Cobblestone ruffled bowl - purple - super
- 135 252. Nippon PCE bowl w/ribbed back - ice blue - nice
- 475 253. **Fenton Peacock at Urn 9" plate - blue - very pretty plate, highly desirable**
- 155 254. Basketweave Open Edge square shaped basket - red - scarce
- 230 255. **Wild Rose syrup - marigold - scarce, nice**
- 75 256. Mikado round shaped compote - marigold - dark, pretty, a great example
- 95 257. Strawberry 9" plate w/BW back - green
- 225 258. **Six Sided candlesticks - marigold - nice matching pair**
- 55 259. Pansy round pickle dish - lavender
- 550 260. **Wreathed Cherry banana boat - peach opal - extremely rare & nice, not many known in peach opal.**
- 105 261. Maple Leaf 4 pc. water set - amethyst - minor roughness in pattern
- 160 262. Question Mark ftd plate - purple - super, super fantastic irid., minor buffing on flat of base
- 150 263. Thin Panels 6" JIP vase - purple - neat squatty shape
- 120 264. Thin Panels 7 1/2" JIP vase - peach opal - nice
- 850 265. **Panther ftd ruffled sauce - red - rare color, nice**
- 45 266. Panther ftd ruffled sauce - blue - silvery
- 300 267. Four Flowers 9" plate - green - very pretty & scarce, non American
- 120 268. Rustic mid-size 16 1/2" vase - white - has crimped edge, scarce & nice
- 105 269. Rustic mid-size 16" vase - green
- 175 270. **Orange Tree 7 pc. punch set - blue - super pretty, scarce**
- 125 271. Orange Tree hatpin holder - marigold - very pretty
- 50 272. Grape & Cable 9" plate w/BW back - purple
- 250 273. **Hearts & Flowers ruffled bowl w/plain back - ice blue - super pretty for these**
- 55 274. Fenton's Three Fruits 12 sided plate - green - minor wear on fruit
- 1950 275. **Chrysanthemum chop plate - bronze - has great brown stretchy irid., very different & pretty, not sure what color to call it, hard to photograph beauty**

- 225 276. Enameled Windflower or Clover tankard pitcher-marigold - rare enameled tankard, from Whitley1999 Auction
- 300 277. Old Rose Distilling/Stippled Grape & Cable- green Variant 9" plate w/ribbed back scarce & very nice
- 125 278. Lined Lattice 9 1/2" vase - purple - nice
- 25 279. Lined Lattice 8" vase - marigold
- 725 280. **Jockey Club ruffled bowl - purple - very scarce & pretty, is square to the ruffle which is nice**
- 105 281. Basketweave Open Edge lg size basket - ice green-nice
- 95 282. **Open Rose 9" plate - amber - super pretty, as nice as these get**
- 155 283. Grape Arbor 5 pc. tankard water set - marigold - dark from top to bottom
- 45 284. Orange Tree 6 ruffled bowl - white
- 250 285. **Field Flower water pitcher - smoke - super pretty example & rare in this color**
- 120 286. Beaded Shell butter dish, creamer & spooner - marigold - sold as set
- 210 287. Hattie ruffled bowl - purple - super
- 240 288. **Peacock & Grape ruffled bowl-lime green opal - rare color, nice**
- 210 289. Australian Thunderbird master ruffled bowl - marigold - minor pinpoint on point
- 240 290. **Grapevine Lattice tankard water pitcher purple - extremely rare pitcher, not many known, includes letter from Frank Fenton**
- 10 291. Grapevine Lattice tumbler - purple
- 70 292. Nautilus sugar bowl - peach opal - ends are not curled in
- 15 293. Nautilus creamer - peach opal
- 40 294. Stretch glass tumble up - celeste blue
- 300 295. **Daisy & Drape turned in vase, amethyst, very pretty**
- 425 296. Flying Bat hatpin - dark - super
- 275 297. **Dugan Peacock at the Fountain water pitcher - amethyst - nice**
- 35 297a. Dugan Peacock at the Fountain tumblers (2) - amethyst - sold as pair
- 175 298. Horse Medallion 7" plate - marigold - pretty example
- 205 299. **Tree Trunk 11" vase - reninger blue - very pretty, border line between reninger and regular blue**
- 375 300. Grape & Cable punch bowl & base - purple - pretty
- 95 301. Grape & Cable Variant ruffled bowl w/plain back- purple-pretty
- 100 302. Sun's Up hatpin - lavender
- 170 303. Star Of David ruffled bowl - purple
- 70 304. Wide Rib 10" vase - purple - super pretty
- 375 305. **M'burg Bullseye & Loop 7 3/4" vase-amethyst- super nice, hard M'burg vase to find**
- 70 306. Floral & Grape water pitcher & tumbler - blue - sold together
- 160 307. Grape & Cable candlesticks - green - one has manufacture roughness on top rim
- 250 308. Good Luck PCE bowl w/ribbed back - blue -electric
- 180 309. **Amaryllis round compote - marigold - super pretty**
- 525 310. **Town Pump - purple - super example**
- 75 311. M'burg Hanging Cherries 10" IC shaped bowl - amethyst - satin
- 75 312. Peacock at the Fountain master berry bowl & 2 sauces - marigold - dark & super
- 190 313. Grape & Cable 7 pc. water set - purple
- 70 314. Four Pillars 12" vase - aqua opal - sliver off one toe
- 210 315. **ORANGE TREE IC SHAPED BOWL - MARIGOLD ON MOONSTONE - VERY RARE BOWL, HIGHLY DESIRABLE & NICE**
- 15 316. Mayflower gas lamp shade - marigold
- 80 317. M'burg Seaweed large size ruffled bowl - green - satin & nice
- 120 318. M'burg Peacock berry sauce - amethyst - radium w/super irid., bird is blue
- 40 319. Drapery candy dish - ice blue - nice
- 135 320. **Broken Arches 8 pc. punch set - marigold - round, scarce set**
- 110 321. Persian Medallion 6" plate - blue
- 110 322. **Fenton Peacock at Urn ruffled bowl - blue - super great example**
- 210 323. **Fenton Fine Rib 9 1/2" vase - red - cherry red color & nice**
- 150 324. Enameled Magnolia & Drape 6 pc. water set - marigold
- 275 325. **Peacocks ruffled bowl w/ribbed back - white - frosty, pretty**
- 50 326. Grapevine Lattice 7" plate - white - super
- 300 327. **M'burg Sunflower pin tray - green - super pretty example, minor pinpoint on back of outside edge**
- 145 328. **Chrysanthemum lg size ftd ruffled bowl-blue electric, super**
- 90 329. Apple Tree water pitcher & tumbler - marigold - pitcher is nice & dark
- 700 330. **Grape & Cable candle lamp - green - rare & desirable, these are great**
- 100 331. Ripple 16" vase - marigold - has 3 7/8" base
- 95 332. **Round Up IC shaped bowl - purple - another pretty bowl**
- 275 333. **Eat Paradise Sodas 6" advertising plate - amethyst - scarce, very nice**
- 110 334. M'burg Diamonds water pitcher - green - very nice example
- 600 335. **Rose Show ruffled bowl - horehound - very pretty example in a rare color, couple of minor nicks filled with epoxy on rose**
- 550 336. **Rose Show ruffled bowl - sapphire - another rare color & nice**
- 700 337. **Rose Show ruffled bowl - aqua - very rare color, nice**
- 600 338. **Rose Show ruffled bowl - aqua opal - lots of opal, super pretty, a beauty**
- 675 339. **Rose Show ruffled bowl - ice blue - very pretty irid. on this dark ice blue bowl**
- 525 340. **Rose Show ruffled bowl - ice green - very pretty, couple nicks on roses filled with epoxy**
- 300 341. **Rose Show ruffled bowl - blue - pretty example w/electric highlights**
- 115 342. **Rose Show ruffled bowl - purple - very pretty example, minor splits on outside edge filled with epoxy**
- 1700 343. **M'burg Seaweed 10" IC shaped bowl - marigold - satin, super, out of the Matheny collection**
- 160 344. **Raspberry milk pitcher - purple - very pretty example**
- 840 345. **Heart & Vine 9" plate - blue - super pretty**
- 230 346. Corinth 9 1/2" JIP vase - blue moonstone - rare color, pretty
- 160 347. **Good Luck 9" plate w/BW back - marigold - scarce**
- 20 348. **Enameled Dianthus tankard water pitcher - white - very scarce tankard, nice**
- 55 349. Enameled Dianthus tumbler - white
- 300 350. **M'burg Feather & Heart 7 pc. water set - marigold - very pretty set, rare**
- 350 351. **Leaf Chain 7" ruffled bowl - red - very scarce & highly desirable**
- 115 352. Imperial Grape wine bottle - purple - bottom of stopper has damage, can't see it inside bottle, pretty
- 250 353. **Imperial Grape wine bottle - smoke - fantastic w/matching stopper**
- 275 354. M'burg Seaweed large size 3 in 1 edge bowl - pastel marigold - satin, pretty, one of Darlene's favorites!
- 550 355. **Wreath of Roses 11 pc. round punch set- amethyst - has Vintage interior, inside the bowl is spectacular**

341.



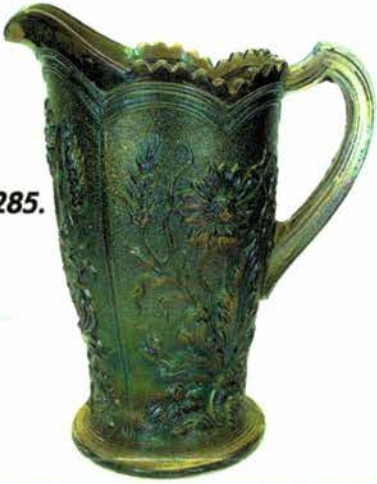
335.



332.



285.



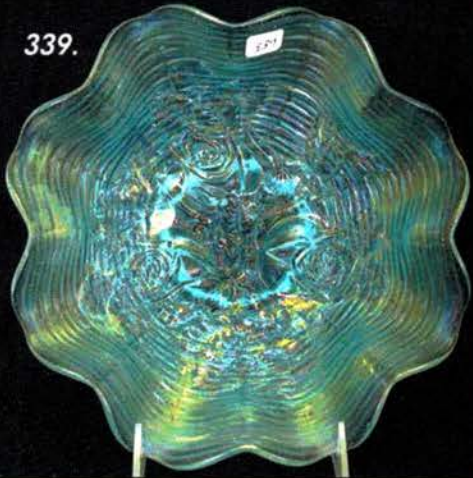
151.



236.



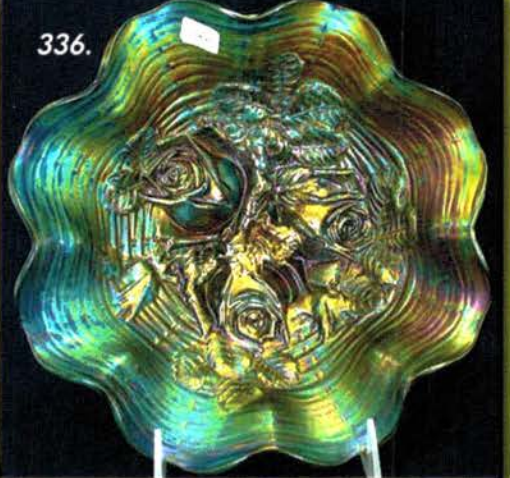
339.



343.



336.



305.



355.



350.



**Seeck Auctions**  
**PO Box 377**  
**Mason City, Iowa**  
**50402**

Presorted  
First Class Mail  
U.S. Postage  
Paid  
Mail Expeditors

135.



**ICGA**  
**2011**  
**Convention**

**AUCTION**  
**July 16, 2011**  
**9:30 a.m.**  
**St. Louis, Mo.**  
**Open to the Public**

T7 P1 102  
LEE MARKLEY  
PO BOX 306  
MENTONE IN 46539-0306

