

20.

**2011**  
**Convention**  
**Auction**  
Open  
to the Public

*Lincoln Land*  
*Carnival Glass Club*

# AUCTION

**Saturday, June 4,**  
**9:30 a.m.**

Best Western Milwaukee Airport  
Hotel and Convention Center  
5105 South Howell Avenue  
Milwaukee, Wisconsin

25.

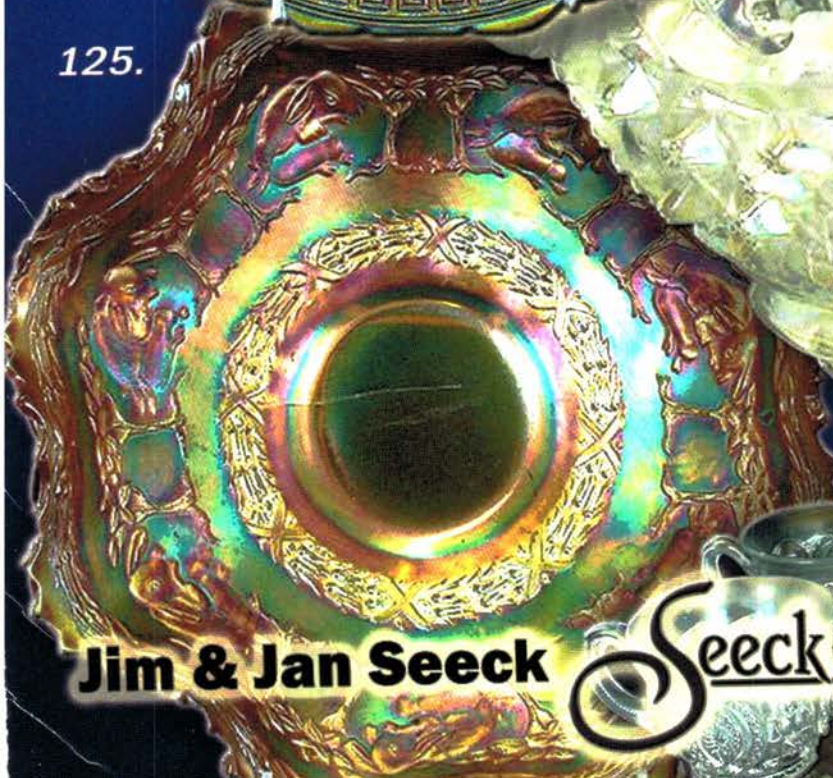


70.

10.



125.



**Jim & Jan Seeck**

**Seeck Auctions 641-424-1116**

**SATURDAY, JUNE 4<sup>th</sup>, 2011—9:30 A.M.**  
**Best Western Airport Hotel—Milwaukee, Wisconsin**  
**NO BUYER'S PREMIUM**  
**OPEN TO THE PUBLIC**

**For Online Auction Catalog, Check our Website: [www.seeckauction.com](http://www.seeckauction.com)**  
**Online absentee bidding closes Friday, June 3rd at 6 p.m. CST**

*Seeck Auctions is pleased to be in Milwaukee this year for the Lincoln Land convention.* We have a fine auction of glass featuring the Steve Davis collection from Georgia. Steve collected for color and iridescence and the quality of his glass is outstanding. We've added a nice collection from Michigan to round out the auction. There is also some very nice contemporary pieces in the auction. Hope to see many of you in Milwaukee.

**Lincoln Land Club Convention info:** Contact President Tina White at 262-652-0971  
If staying at the Best Western Hotel, for reservations please call: (414)769-2100

**Terms:** Cash or Check, VISA and MasterCard accepted w/proper ID. **4% Clerking Fee** on all purchases except for payment of cash or check. Announcements made day of sale take precedence over any printed information.

**ABSENTEE BIDDING: We have 3 options for you**

---

---

**1) WRITTEN OR PHONE:** If you **DO NOT** have internet access or access to our website, you can: Call us by phone to enter your bids at (641)424-1116 **OR** By sending the numbers of the item(s) desired and the amount bid on each to: Seeck Auctions, PO Box 377, Mason City, Iowa 50402. (The mail has not been very dependable. We would prefer you call us with your bids rather than send them in a letter.)

- All written and called in bids will be entered into the online catalog by us.
- **Written and phone Absentee Deadline:** Have all bids in by **Wed., June 1st.**

**2) ONLINE CATALOG:** Enter your bids from our website into our online catalog through the Auction Flex system. When you get to the online catalog, you will need to login as a bidder. For the first time you will need to **set up your account** by creating a username and password. This will include filling out a form with your name, address, etc. You will also need to **register for the auction** which will ask you to enter a valid credit card number. This card will be validated by a \$1 charge to your card. This will only happen once and you will now be able to enter bids through our online catalog by just logging in with your user name and password. You will use this user name and password for all our auctions. You are not required to pay by credit card if you are successful. This is just a safeguard for us if someone does not pay. We will let you know what you owe us through an email and you can decide how you would like to pay us.

- *An exciting advantage of entering your bids online yourself,* is the option to be notified by email if you are outbid on an item. You will know when you are outbid on an item and you can increase your bid on that item or bid on something else. **There will be a cutoff date and time for entering your bids online.** After this time has passed, you will not be able to enter your bids from our online catalog.
- *Remember,* that just because you are the high bidder in the online catalog, this does not mean you have won the item. Your bid will still need to beat the floor bidders and live phone bidders. This system will run our absentee bids just as we did before. You will still be able to buy the item lower than your online bid unless someone on the floor bids you higher.

**3) LIVE PHONE BIDDING:** Available on pieces with an estimated sale price of \$500 or more. If you would like to participate in live phone bidding, contact us by **the Tuesday before the auction (May31st).** We will need to know the lot# and the phone number that you can be reached at on the day of the auction. We will also need your home phone number if different than the above number. Please call with questions: 641-424-1116.

❖ **There is a \$7 handling charge for each successful bid. Shipping and insurance charges are additional.** bidders will be notified by phone/email if their bid(s) are successful. This will be done 1 - 3 days after the auction.

❖ **If you do not receive an item that sold for less than your bid, assume we cancelled your bid because the item had a severe manufacture problem, damage or was not listed correctly.**

**BID INCREMENTS:**    \$1 - \$100/\$5    \$100 - \$200/\$10    \$200 - \$700/\$25    \$700 - \$1,500/\$50  
                                 \$1,500 - \$3,000/\$100    \$3,000+ Auctioneer's Discretion

1. Wreath of Roses ruffled compote - green
2. Fenton Peacock at Urn ruffled compote - blue
3. Fenton Peacock at Urn ruffled compote - aqua - harder color to find
4. Corinth 10" JIP vase - amethyst
5. Open Rose 9" plate - marigold
6. Holly ruffled compote - green
7. Holly ruffled compote - blue
8. April Showers 11 1/2" vase - green
9. Miniature Morning Glory 7 1/2" vase - green
10. Memphis 6 pc. ruffled fruit bowl set - white - very rare color, beautiful
11. Memphis 8 pc. ruffled fruit bowl set-marigold-dark & super, very pretty
12. Pulled Loop 10" vase - blue - scarce color, base has been slightly polished
13. Peacocks ruffled bowl w/ribbed back - aqua opal - great opal, a super nice example!
14. Peacocks ruffled bowl w/ribbed back - white - frosty w/pretty irid.
15. Peacocks ruffled bowl w/ribbed back - blue - super pretty electric irid., a dandy
16. Peacocks ruffled bowl w/ribbed back - marigold - dark, super, another beauty
17. Peacocks ruffled bowl w/ribbed back - pastel marigold - pretty pink & yellow irid., the birds are fabulous
- 17a. Peacocks ruffled bowl w/ribbed back- blue opal- not carnival glass
18. Vintage small size epergne - green - bowl is super, chip on base of lily
19. Vintage small size epergne - blue
20. Hearts & Flowers 9" plate w/ribbed back - purple - fabulous blue irid., a wonderful plate!
21. Hearts & Flowers 9" plate w/ribbed back - marigold - scarce & nice
22. Grape & Cable sweetmeat - purple
23. Orange Tree 6 ruffled bowl - blue - electric & super, beautiful irid.
24. Orange Tree standard size mug - lime green - has marigold overlay, nice
25. NUART Homestead chop plate - blue - super pretty example, extremely rare, minor spot of epoxy on the well pole for the bucket
26. Beaded Bullseye 11" vase - marigold
27. Rose Show ruffled bowl - aqua opal - super opal w/fabulous butterscotch irid., beautiful!
28. Rose Show ruffled blue - ice blue - scarce
29. Rose Show ruffled bowl - white - scarce, has pretty irid.
- 29a. Rose Show ruffled bowl - marigold - dark
30. Rose show ruffled bowl - pastel marigold - lots of yellow irid., pretty
31. N's Bushel Basket - aqua opal - butterscotch
32. N's Bushel Basket - green - scarce color
33. N's Bushel Basket - amethyst - epoxy on handle
34. N's Bushel Basket - purple
35. N's Bushel Basket - blue - silvery
36. N's Bushel Basket - ice green - nice
37. N's Bushel Basket - white
38. N's Bushel Basket - marigold
39. N's Bushel Basket - blue opal-not Carnival Glass
40. N's Bushel Basket - black amethyst - non iridized
- 40a. N's Bushel Basket - custard - has nutmeg stain, non iridized
41. Leaf Chain 9" plate - blue - super pretty example, scarce
42. Leaf Chain 9" plate - marigold - super beautiful
43. Leaf Chain 9" plate - green - lacks irid.
44. Leaf Chain 9" plate - green - lacks irid.
45. Stippled Strawberry PCE bowl w/BW back - green - rare bowl, nice
46. Stippled Strawberry PCE bowl w/ribbed back- blue - scarce color
47. Stippled Strawberry PCE bowl w/ribbed back- purple - minor rub between 2 points
48. Stippled Strawberry PCE bowl w/ribbed back- marigold - very nice
49. Tree Trunk 7" squatty vase - marigold
50. Grape & Cable mid-size 8 pc. punch set - marigold - dark, super, a great set!
51. Waterlily & Cattails toothpick or whimsy vase- marigold
52. Orange Tree w/trunk 9" plate - blue - scarce
53. Orange Tree 9" plate - marigold - super pretty
54. Apple Tree 7 pc. water set - marigold - one tumbler has minor nick on base
55. Wishbone ftd ruffled bowl - white - frosty, super, a beautiful bowl
56. Wishbone ftd ruffled bowl - green
57. Wishbone ftd ruffled bowl - purple - pretty
58. Stippled Three Fruits PCE bowl w/ribbed back - green - very rare color & nice, rubbing on the fruit
59. Stippled Three Fruits PCE bowl w/ribbed back- blue-very scarce bowl, electric highlights
60. Stippled Three Fruits PCE bowl w/BW back - purple - super nice, a beauty
61. Stippled Three Fruits PCE bowl w/ribbed back - marigold - minor restoration on one point but very pretty, slight rubbing on fruit
62. Two Flowers lg size IC shaped ftd bowl - blue - irid. spot in middle
63. Sunflower spt ftd ruffled bowl - blue - very pretty, has minor pinpoint on tip of point
64. Sunflower spt ftd ruffled bowl - marigold - pretty
65. Poppy Show ruffled bowl - marigold - repaired chip on base, dark & super
66. Poppy Show ruffled bowl - pastel marigold - pretty
67. Poppy Show ruffled bowl - white - pretty, minor heat checks in base
68. Diamond Lace water pitcher - purple - super
69. Diamond Lace tumbler - purple - pretty
70. Tree Trunk mid-size 12 1/2" vase - white

- 70., cont. -frosty & nice, beautiful vase!
- \_\_\_ 71. Tree Trunk mid-size 13" vase- green - scarce, nice
- \_\_\_ 72. Tree Trunk mid-size 13" vase - purple - scarce, lots of gold irid.
- \_\_\_ 73. **Concord ruffled bowl - marigold - dark, a gorgeous example**
- \_\_\_ 74. Waterlily ftd ruffled saucer - green - scarce color
- \_\_\_ 75. **Persian Garden ruffled fruit bowl - purple - super pretty, rare set**
- \_\_\_ 76. **Persian Garden ruffled fruit bowl - white - very nice, also scarce**
- \_\_\_ 77. **Beaded Cable rose bowl - ice blue - very nice, scarce color**
- \_\_\_ 78. **Beaded Cable rose bowl - white - slight manufacture fissure in one foot, not sure what it is, scarce**
- \_\_\_ 79. Beaded Cable rose bowl - aqua opal
- \_\_\_ 80. Beaded Cable rose bowl - blue - silvery
- \_\_\_ 81. Beaded Cable rose bowl - purple
- \_\_\_ 82. Beaded Cable rose bowl - marigold - nice
- \_\_\_ 83. Beaded Cable rose bowl - custard w/nutmeg - not iridized
- \_\_\_ 84. Beaded Cable rose bowl - green - rayed interior
- \_\_\_ 85. Beaded Cable rose bowl - purple - has rayed interior, silvery
- \_\_\_ 86. **Rose Show 9" plate - marigold - dark & super, minor pinpoint on rose**
- \_\_\_ 87. **Rose Show 9" plate - pastel marigold - lots of super yellow irid.**
- \_\_\_ 88. Holly IC shaped bowl - green
- \_\_\_ 89. Holly IC shaped bowl - white
- \_\_\_ 90. **Grape & Cable 4 pc. table set - green - very nice set, scarce color**
- \_\_\_ 91. April Showers 5 1/2" squatty vase - amethyst
- \_\_\_ 92. **Stag & Holly lg size IC shaped ftd bowl - blue- a dandy**
- \_\_\_ 93. **Fenton Peacock at Urn 8 ruffled bowl - green - fabulous, as nice as these get, hard to find in green**
- \_\_\_ 94. Fenton Peacock at Urn 8 ruffled bowl - blue
- \_\_\_ 95. **Stippled Three Fruits ruffled bowl w/ribbed back - blue - very scarce color, nice**
- \_\_\_ 96. **Stippled Three Fruits ruffled bowl w/ribbed back - white - scarce**
- \_\_\_ 96a. **Stippled Tree Fruits ruffled bowl w/ribbed back - marigold - dark & super**
- \_\_\_ 97. Stippled Three Fruits ruffled bowl w/ribbed back-marigold - pastel & super
- \_\_\_ 98. Nine Sixteen 16" vase - blue
- \_\_\_ 99. Nine Sixteen 16" vase - marigold
- \_\_\_ 100. **Imperial Grape 6 pc punch set - purple - very rare set & nice**
- \_\_\_ 101. Imperial Grape 8 pc. punch set, amber, marked IG
- \_\_\_ 102. Imperial Grape 8 pc. punch set, ice blue, marked LIG
- \_\_\_ 103. 1988 HOACGA room display Hobnail spittoon-marigold
- \_\_\_ 104. 1989 HOACGA room display Hobnail spittoon-sapphire
- \_\_\_ 105. 1994 HOACGA room display Hobnail spittoon-amber
- \_\_\_ 106. 1995 HOACGA room display Hobnail spittoon-celeste blue
- \_\_\_ 107. 1996 HOACGA room display Hobnail spittoon-green opal
- \_\_\_ 108. 1997 HOACGA room display Hobnail spittoon-plum opal
- \_\_\_ 109. Heavy Iris crimped edge vase - red - contemporary, made from water pitcher, Fenton
- \_\_\_ 110. Heavy Iris crimped edge vase - blue - contemporary, made from water pitcher, Fenton
- \_\_\_ 111. Heavy Iris crimped edge vase - purple - Fenton contemporary, made from water pitcher
- \_\_\_ 112. Cherry Chain 10" ruffled bowl - light blue - contemporary, Fenton
- \_\_\_ 113. Good Luck whimsy 6 1/2" vase or jardiniere - pink - contemporary, Levay, 2000, *one of one*
- \_\_\_ 114. Good Luck whimsy 7 1/2" vase or jardiniere - red - contemporary, Levay, 2005
- \_\_\_ 115. Good Luck whimsy 7 1/2" vase or jardiniere - pastel marigold or clambroth - contemporary, Levay, 2006, *one of one*
- \_\_\_ 116. Homestead chop plate - smoke - marked IG
- \_\_\_ 117. Homestead chop plate - amberina - marked ALIG
- \_\_\_ 118. Homestead chop plate - white - marked IG
- \_\_\_ 119. Contemporary 10" ftd vase - blue opal
- \_\_\_ 120. Handpainted 8 1/4" vase - green - contemporary, artist signed
- \_\_\_ 121. Tulip 8 1/2" vase - purple - Fenton
- \_\_\_ 122. Heavy Iris 5 pc. water set - aqua - has reed handle, contemporary, Fenton
- \_\_\_ 123. **Butterfly & Tulip square shaped ftd bowl - purple- a Carnival classic, couple minor nicks on rib of foot**
- \_\_\_ 124. Leaf Chain 7" ruffled bowl - powder blue - very pretty
- \_\_\_ 125. **Peter Rabbit ruffled bowl - marigold - very pretty, extremely rare**
- \_\_\_ 126. Miniature Blackberry compote - amethyst
- \_\_\_ 127. Miniature Blackberry compote - marigold
- \_\_\_ 128. **Dragon & Lotus IC shaped bowl - red - silver irid., rare color**
- \_\_\_ 129. Dragon & Lotus IC shaped bowl - green - nice
- \_\_\_ 130. **Stippled Three Fruits 9" plate w/ribbed back- purple - super pretty example, as nice as these get**
- \_\_\_ 131. **Stippled Three Fruits 9" plate w/ribbed back- blue - has electric highlights**
- \_\_\_ 132. Stippled Three Fruits 9" plate w/ribbed back - amethyst - some may call this lavender, silvery
- \_\_\_ 133. Stippled Three Fruits 9" plate w/ribbed back - marigold - super pretty w/pastel irid.
- \_\_\_ 134. Stippled Three Fruits 9" plate w/ribbed back - marigold
- \_\_\_ 135. Holly 9" plate - marigold - very pretty plate
- \_\_\_ 136. Holly 9" plate - blue
- \_\_\_ 137. **N's Town Pump - purple - a Carnival classic, silvery**

138. Tree Trunk 10" vase - blue - scarce color, nice
139. Tree Trunk 11" vase - blue opal - not carnival
140. **Stippled Peacocks PCE bowl w/ribbed back - blue - very pretty, birds are fantastic**
141. Orange Tree hatpin holder - blue - typical minor spots on feet
142. **Stippled Three Fruits Medallion spt ftd ruffled bowl - lime green opal - super example, hard to find**
143. **Stippled Three Fruits Medallion spt ftd ruffled bowl - renniger blue - nice, rare color**
144. Stippled Three Fruits Medallion spt ftd ruffled bowl - purple - pretty
145. **Dragon & Lotus spt ftd IC shaped bowl - lime green opal - super example w/great opal, minor pinpoint on cleat**
146. **Wishbone 10" PCE bowl w/BW back - green - minor manufacture roughness on base, pretty**
147. Wishbone 10" PCE bowl w/BW back - marigold-very nice
148. **Plaid ruffled bowl - green - rare color, nice**
149. Captive Rose 9" plate - green - silvery
150. **Peacock at the Fountain 6 pc. punch set - blue w/purple base - very pretty set, irid. matches great on bowl & base**
151. **Peacock at the Fountain 6 pc. punch set - purple - rare set, nice**
152. **Peacock at the Fountain 8 pc. punch set - marigold - dark & nice, pretty set**
153. Three Fruits Medallion spt ftd ruffled bowl - purple
154. Round Up 9" plate - blue - silvery, scarce
155. **Hearts & Flowers PCE bowl w/ribbed back - ice blue - very rare, nice, minor nick on collar base**
156. **Hearts & Flowers PCE bowl w/ribbed back - white - very scarce**
157. **Hearts & Flowers PCE bowl w/ribbed back - purple - nice**
158. **Hearts & Flowers PCE bowl w/ribbed back - marigold - dark, nice**
159. Thistle IC shaped bowl - green
160. **N's Stippled Peacock at Urn master IC bowl - marigold - pretty pink, blue & yellow irid.**
161. Pansy ruffled bowl - purple
162. **Peacock & Grape 9" plate - blue - rare plate, silvery**
163. **Peacock & Grape 9" plate - marigold**
164. Fruits & Flowers bonbon - blue - electric
165. **Peacocks PCE bowl w/ribbed back - ice blue - rare, nice**
166. **Peacocks PCE bowl w/ribbed back -ice green- rare color, has chip on edge**
167. **Peacocks PCE bowl w/ribbed back - purple - very pretty looking bowl**
168. **Peacocks PCE bowl w/ribbed back- blue- pretty, has some minor spots between webbing of points**
169. **Peacocks PCE bowl w/ribbed back -marigold- nice**
170. **Good Luck PCE bowl w/ribbed back - green - pretty**
171. **Good Luck PCE bowl w/ribbed back - blue - has been polished between 2 points**
172. Good Luck PCE bowl w/ribbed back- marigold -nice
173. Grape Arbor tankard water pitcher - marigold - pretty
174. Grape Arbor tumbler - marigold
175. **Garden Path Variant 10" ruffled bowl -white- very pretty, scarce**
176. **Peacocks 9" plate w/ribbed back-marigold - nice**
177. **Peacocks 9" plate w/ribbed back - ice green**
178. Peacocks 9" plate w/ribbed back - ice green - lacks irid.
179. Peacocks 9" plate w/ribbed back - white - scarce
180. Hearts & Flowers ruffled compote - aqua opal - pastel & pretty, slight polishing around base
181. **Hearts & Flowers ruffled compote - blue - super example**
182. Hearts & Flowers ruffled compote- marigold-very pretty, minor nick that's been slightly polished on base
183. Holly 3 in 1 edge bowl - green - very pretty irid., nice bowl!
184. Horse Medallion ftd nut bowl - lime green - rub on one point
185. **Stippled Grape & Cable Variant 9" plate w/ribbed back - marigold - nice, scarce**
186. Old Rose Distilling Co. Stippled Grape & Cable Variant 9" plate w/ribbed back - green - scarce
187. **Imperial Grape 7 pc. wine set - purple - stopper has crack in bottom, one wine has nick, super pretty**
188. Imperial Grape wine - olive green - rare color
189. Grape & Cable Variant PCE bowl w/BW back - purple - nice
190. **Dandelion 5 pc. tankard water set - marigold - very pretty set**
191. Leaf Chain 6 ruffled bowl - white
192. **Orange Tree w/Trunk IC shaped bowl -green- very scarce color**
193. M'burg Whirling Leaves ruffled bowl - green - center missing irid., satin
194. Greek Key ruffled bowl w/BW back - purple
195. **Concord 3 in 1 edge bowl - green - super, super bowl, has emerald type irid.**
196. **Good Luck 9" plate w/BW back - purple**
197. **Good Luck 9" plate w/BW back - marigold**
198. Strawberry 9" plate w/BW back-green-a pretty one
199. Grape & Cable spt ftd 9" plate-green-silvery irid.
200. **Heavy Grape punch bowl & base - marigold - lots of pink irid., pretty!**
201. Poppy Show crimped edge JIP vase - red - contemporary Fenton
202. Poppy Show crimped edge vase - plum opal - has 4 ruffles on top, contemporary Fenton
203. Poppy Show vase - Burmese - contemp. Fenton
204. Poppy Show vase - vaseline opal - contemp.Fenton
205. Poppy Show vase - lavender - contemp. Fenton
206. Poppy Show vase - emerald green cased-Con. Fenton

- \_\_\_ 207. Poppy Show vase - lime green opal - contemporary Fenton  
 \_\_\_ 208. Poppy Show vase - cranberry opal -cont. Fenton  
 \_\_\_ 209. Poppy Show vase - lavender opal - cont. Fenton  
 \_\_\_ 210. Poppy Show vase - pink opal - contemp. Fenton  
 \_\_\_ 211. Poppy Show vase - red - contemp. Fenton  
 \_\_\_ 212. Poppy Show vase - aqua - contemporary Fenton  
 \_\_\_ 213. Poppy Show vase - celeste blue - contemp. Fenton  
 \_\_\_ 214. Poppy Show vase – green - marked IG  
 \_\_\_ 215. Poppy Show GWTW lamp - red-contemp.Fenton  
 \_\_\_ 216. Poppy Show GWTW lamp - purple - cont.Fenton  
 \_\_\_ 217. Holly plate - aqua opal - contemporary Fenton  
 \_\_\_ 218. Loganberry vase - amber - marked IG  
 \_\_\_ 219. Apple Tree 5 pc. water set - purple - cont. Fenton  
 \_\_\_ 220. Red Stretch 4 lily epergne – red - chip around one lily hole, Fenton  
 \_\_\_ 221. Stretch Glass 10” ruffled bowl – red - Fenton  
 \_\_\_ 222. Egyptian Ladies 8” vase - blue - contemp. Fenton  
 \_\_\_ **223. Hearts & Flowers 9” plate w/ribbed back – purple - scarce**  
 \_\_\_ 224. Dugan Cherries 10” ruffled bowl - peach opal  
 \_\_\_ **225. M’burg Trout & Fly IC shaped bowl - amethyst - silvery**  
 \_\_\_ 226. Bells & Beads 6” ruffled bowl – purple  
 \_\_\_ 227. Good Luck ruffled bowl w/ribbed back - green  
 \_\_\_ 228. Good Luck ruffled bowl w/ribbed back - marigold - has yellow & pink irid. towards the pastel side  
 \_\_\_ 229. Cobblestone ruffled bowl – purple - silvery  
 \_\_\_ **230. Stippled Peacocks ruffled bowl w/ribbed back-marigold - absolute beauty with lots of pinks**  
 \_\_\_ **231. Basketweave Open Edge JIP basket - red - very nice**  
 \_\_\_ **232. Basketweave Open Edge JIP basket - red - slight amberina base**  
 \_\_\_ **233. Basketweave Open Edge JIP basket – red - slight amberina base**  
 \_\_\_ 234. Basketweave Open Edge JIP basket - dark lime green  
 \_\_\_ 235. Basketweave Open Edge JIP basket - aqua  
 \_\_\_ 236. Basketweave Open Edge JIP basket - green  
 \_\_\_ 237. Basketweave Open Edge JIP basket - lime green- has marigold overlay  
 \_\_\_ 238. Basketweave Open Edge JIP basket - vaseline - has marigold overlay  
 \_\_\_ 239. Basketweave Open Edge JIP basket - vaseline - has marigold overlay  
 \_\_\_ 240. Basketweave Open Edge JIP basket - amethyst  
 \_\_\_ 241. Basketweave Open Edge JIP basket - blue - silvery  
 \_\_\_ 242. Basketweave Open Edge JIP basket - bluish green - almost like a renninger  
 \_\_\_ 243. Basketweave Open Edge JIP basket - blue  
 \_\_\_ 244. Basketweave Open Edge JIP basket - marigold  
 \_\_\_ **245. Nippon PCE bowl w/BW back - purple - scarce**  
 \_\_\_ **246. Nippon PCE bowl w/ribbed back - ice blue - scarce**  
 \_\_\_ **247. Nippon PCE bowl w/BW back – white**  
 \_\_\_ **248. Nippon PCE bowl w/BW back – marigold- nice**  
 \_\_\_ 249. Wild Blackberry 6 ruffled bowl - green - silvery  
 \_\_\_ **250. Memphis 8 pc. punch set - marigold - dark & super, beautiful**  
 \_\_\_ 251. M’burg Rays & Ribbons ruffled bowl - green - satin  
 \_\_\_ 252. Grape & Cable hatpin holder - green - nice  
 \_\_\_ 253. Grape & Cable hatpin holder - purple  
 \_\_\_ 254. Grape & Cable hatpin holder - marigold - dark, super, minor roughness on back of one foot  
 \_\_\_ **255. Scroll Embossed 9” plate – purple - covered in blue irid., just fabulous**  
 \_\_\_ 256. Persian Medallion 10” ruffled bowl – amethyst - nice  
 \_\_\_ 257. Scroll Embossed 7” ruffled bowl - purple - super  
 \_\_\_ **258. Peacock Tail 6” plate - marigold - scarce, nice**  
 \_\_\_ 259. Three Fruits 9” plate w/plain back - green - nice  
 \_\_\_ **260. Embroidered Mums ruffled bowl w/ribbed back - ice blue - scarce bowl**  
 \_\_\_ **261. Embroidered Mums ruffled bowl w/ribbed back - blue - scarce**  
 \_\_\_ **262. Embroidered Mums ruffled bowl w/ribbed back - marigold - scarce & pretty**  
 \_\_\_ 263. Orange Tree powder jar - blue - collar base has been slightly polished  
 \_\_\_ 264. Plaid IC shaped bowl – marigold - very desirable pattern  
 \_\_\_ **265. Orange Tree 9” plate - marigold - dark, pretty**  
 \_\_\_ **266. Rose Garden 7 1/2” letter vase – blue - typical roughness on top points**  
 \_\_\_ 267. M’burg Hanging Cherries 10” IC shaped bowl - amethyst-radium, couple of minor nicks on base  
 \_\_\_ 268. M’burg Hanging Cherries 10” IC shaped bowl - marigold - satin, pretty  
 \_\_\_ 269. Grape & Cable 9” plate w/BW back - green  
 \_\_\_ **270. Rose Show 9” plate – marigold - absolutely super, dark & beautiful, repaired chip on rose**  
 \_\_\_ 271. Coral ruffled bowl - marigold  
 \_\_\_ **272. Fenton Peacock at Urn 9” plate - blue - scarce, nice**  
 \_\_\_ **273. Fenton Peacock at Urn 9” plate - marigold**  
 \_\_\_ 274. Peacock & Grape 3 in 1 edge bowl – green - nice  
 \_\_\_ **275. Stippled Strawberry ruffled bowl w/ribbed back - lime green - super pretty & very rare, a great bowl**  
 \_\_\_ 276. Round Up 9” plate - peach opal - scarce  
 \_\_\_ **277. Stag & Holly 9” spt ftd plate - marigold - scarce, nice**  
 \_\_\_ 278. Fruits & Flowers 7” plate - green - scarce, nice  
 \_\_\_ **279. Grape & Cable cologne bottle - purple**  
 \_\_\_ **280. Poinsettia & Lattice ftd ruffled bowl w/ribbed back - marigold - dark, super**  
 \_\_\_ 281. Amaryllis tri-cornered miniature compote - purple  
 \_\_\_ **282. Stippled Grape & Cable Variant PCE bowl w/ribbed back - blue - scarce, nice**  
 \_\_\_ 283. Stippled Grape & Cable PCE bowl w/ribbed back-purple - scarce bowl, missing irid. in center  
 \_\_\_ 284. Three Fruits 9” plate w/BW back – green - pretty multi-colored irid.

- \_\_\_ 285. **Nippon ruffled bowl w/ribbed back – marigold - fantastic, dark, what most people would call pumpkin**
- \_\_\_ 286. Wild Strawberry 7” handgrip plate – purple - pretty, one point has epoxy
- \_\_\_ 287. Star of David ruffled bowl – purple - super pretty
- \_\_\_ 288. Hattie chop plate - green - rare plate, silvery
- \_\_\_ 289. Orange Tree ruffled fruit bowl - blue - scarce
- \_\_\_ 290. **Oriental Poppy tankard water pitcher -purple - absolutely fantastic, as nice as you can find!**
- \_\_\_ 291. Ripple 6 1/2” vase - green - 2 1/2” base
- \_\_\_ 292. Good Luck PC bowl w/BW back - green - very nice
- \_\_\_ 293. Grape & Cable Variant 7” plate w/BW back - marigold - super!
- \_\_\_ 294. **N’s Corn vase w/stalk base - ice green - heat check in base**
- \_\_\_ 295. **N’s Corn vase w/stalk base – white - epoxy by base seam**
- \_\_\_ 296. Fenton Peacock at Urn 8 ruffled bowl - blue -pretty!
- \_\_\_ 297. Fanciful low IC shaped bowl - white - very nice
- \_\_\_ 298. Fanciful IC shaped bowl – amethyst
- \_\_\_ 299. Drapery 7 1/2” vase - marigold - dark, nice
- \_\_\_ 300. **Grape & Cable small size 6 pc. punch set – purple - bowl is super, base has crack, easily replaced**
- \_\_\_ 301. **Grape & Cable small size 8 pc. punch set - marigold - dark & beautiful set**
- \_\_\_ 302. Heavy Iris 7 pc. tankard water set - blue slag - contemporary Gibson
- \_\_\_ 303. Heavy Iris 7 pc. tankard water set - lavender opal - contemporary Gibson
- \_\_\_ 304. Heavy Iris 5 pc. tankard water set - red - contemporary Gibson
- \_\_\_ 305. Heavy Iris 7 pc. tankard water set - blue - contemporary Gibson
- \_\_\_ 306. Heavy Iris 7 pc. tankard water set - amethyst - contemporary Gibson
- \_\_\_ 307. Luster Rose ftd ruffled fruit bowl - amber - marked IG
- \_\_\_ 308. Chrysanthemum chop plate - white - marked IG
- \_\_\_ 309. Leaded Glass lamp w/red turtle back shade - stands 18 1/2” high, 13” across shade, base has turtle back panels also
- \_\_\_ 310. Imperial Grape 11” ruffled bowl–purple–Levay 2000
- \_\_\_ 311. Peacock Garden 10” vase – aqua - very pretty contemporary vase
- \_\_\_ 312. 2000 HOACGA Pansy plate – blue
- \_\_\_ 313. 2009 TCGC 30th Anniversary Dahlia water pitcher - green - Texas Carnival Glass Club
- \_\_\_ 314. Dancing Ladies cvd urn – green - Levay 2006
- \_\_\_ 315. 2005 ICGA 8 ruffled Frolicking Bears vase - purple - whimsy from the original
- \_\_\_ 316. 2002 ICGA JIP Frolicking Bears vase - red - whimsy from the original
- \_\_\_ 317. 2005 ICGA 3 ruffled Frolicking Bears vase - purple - whimsy from the original
- \_\_\_ 318. 1993 ICGA Frolicking Bears tumbler - aqua opal
- \_\_\_ 319. 1982 ICGA Frolicking Bears spittoon - red
- \_\_\_ 320. 1981 ICGA Frolicking Bears spittoon - aqua opal
- \_\_\_ 321. 2005 ICGA Frolicking Bears spittoon - purple
- \_\_\_ 322. 2004 ICGA Frolicking Bears spittoon - blue
- \_\_\_ 323. 1998 ICGA Frolicking Bears spittoon - green opal
- \_\_\_ 324. Hearts & Flowers ruffled bowl w/ribbed back - purple- large spot of epoxy on edge
- \_\_\_ 325. **Hearts & Flowers ruffled bowl w/ribbed back-marigold - nice**
- \_\_\_ 326. **Hearts & Flowers ruffled bowl w/ribbed back - ice blue - silver irid.**
- \_\_\_ 327. Hearts & Flowers ruffled bowl w/ribbed back - white - very pretty
- \_\_\_ 328. Three Fruits Medallion spt ftd ruffled bowl - purple - nice
- \_\_\_ 329. M’burg Peacock at Urn ruffled Mystery bowl - green - radium, nice
- \_\_\_ 330. Drapery rose bowl - blue - nice
- \_\_\_ 331. Rustic mid-size 12” vase - green
- \_\_\_ 332. Holly 9” plate – marigold - pretty
- \_\_\_ 333. **Wishbone ftd ruffled bowl - white - frosty & pretty, scarce**
- \_\_\_ 334. Greek Key ruffled bowl w/BW back-pastel marigold
- \_\_\_ 335. **Poppy Show 9” plate - marigold - pretty, chip off poppy**
- \_\_\_ 336. **Poppy Show 9” plate - white - chip on collar base, chip on poppy**
- \_\_\_ 337. Stippled Good Luck ruffled bowl w/ribbed back-marigold - pretty, lots of pink irid.
- \_\_\_ 338. Holly ruffled hatshape - red - crack in side of hat
- \_\_\_ 339. **Peacocks ruffled bowl w/ribbed back - blue - electric & pretty**
- \_\_\_ 340. **Blossomtime ruffled compote - marigold - dark, nice**
- \_\_\_ 341. Grape & Cable master IC bowl – white
- \_\_\_ 342. Ten Mums CRE bowl - green - scarce in this shape, nice
- \_\_\_ 343. Good Luck ruffled bowl w/BW back - purple - minor nick on base
- \_\_\_ 344. **M’burg Peacock master berry bowl - purple - pretty, radium**
- \_\_\_ 345. Dugan Cherries IC shaped bowl - purple
- \_\_\_ 346. **Stippled Three Fruits 9” plate w/ribbed back - blue - electric highlights**
- \_\_\_ 347. **Concord ruffled bowl - marigold - pretty**
- \_\_\_ 348. Greek Key PCE bowl w/BW back - green - very nice, scarce bowl
- \_\_\_ 349. Stippled Grape & Cable Variant ruffled bowl w/ribbed back - green - scarce
- \_\_\_ 350. Diamond Point 10” vase - ice green - scarce, nice
- \_\_\_ 351. **Stippled Peacocks 9” plate w/ribbed back - blue - electric & super, beautiful!**
- \_\_\_ 352. **Stippled Peacocks 9” plate w/ribbed back - pastel marigold - fantastic pink & yellow irid.**
- \_\_\_ 353. Collection of Carnival Glass books - all sold for one money

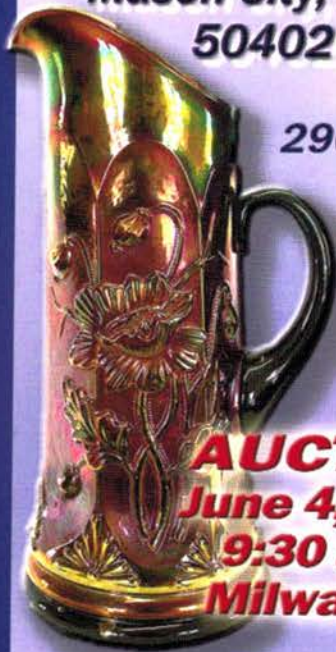
# Seeck Auctions

PO Box 377

Mason City, Iowa

50402

Presorted  
First Class Mail  
U.S. Postage  
Paid  
Mail Expedited



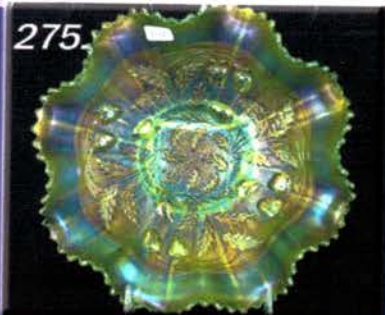
290.

**AUCTION**  
**June 4, 2011,**  
**9:30 a.m.,**  
**Milwaukee**

T4 P1 263  
LEE MARKLEY  
PO BOX 306  
MENTONE IN 46539-0306



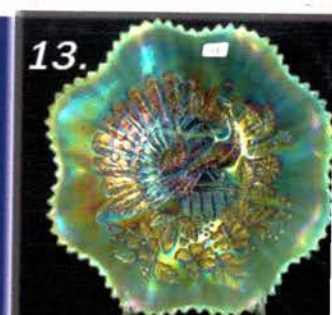
151.



275.



75.



13.



27.



250.



165.



142.



100.



155.



351.



50.