

# BURNS

## AUCTION SERVICE

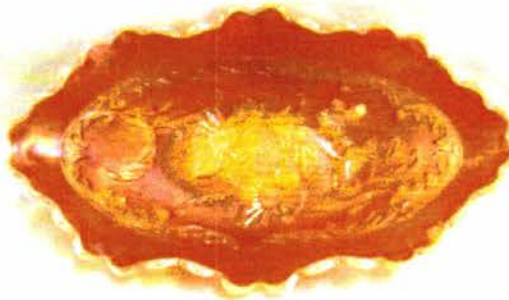
**CARNIVAL GLASS AUCTION**

**SATURDAY, MARCH 26, 2011 - 10:30 A.M.**

**PREVIEW: Thursday & Friday during Mall Hours  
(9:00 a.m. -5:00 p.m. and Saturday before the auction)**

**Webb's Auction Gallery (inside Antique Mall)  
200 West Union Street, Centerville, IN 47330  
Exit 145 off I-70**

Tom Burns, Indiana Auctioneer's Lic.#AU10900154  
183 Sunnyside Drive, Clermont, FL 34711 - (407) 592-6552  
Terrell Medd, Indiana Auctioneer's Lic. #AU01023843



WE ARE PLEASED TO BE SELLING THE COLLECTION OF NORM & JO MARTIN OF INDIANA. THESE FOLKS AMASSED THEIR COLLECTION SINCE THE LATE 60'S AND HAVE SOMETHING FOR EVERYONE. WEBB'S ANTIQUE MALL WILL HOST THE EVENT. SEE YA THERE!

1. No deposit required. Bidders will take full responsibility to honor any and all bids we execute for them. Payment in full plus postage and handling required after notification and before we ship any item to them.
2. Items are bid on in perfect condition with average or above average iridescence or as listed in the brochure. People present at auction are responsible for finding pinheads, wear, spottiness, manufacturer's defects or any other minor flaws, etc.
3. For Phone Bids or Questions Regarding Auction Glass, Call **Tom Burns (407) 592-6552**. Live phone bidding available on pieces with an estimated sale price of \$500 or more. Mail bids also accepted. Successful bidders will be notified by phone number.
4. If you have some other person at the auction bidding for you, they must pay for the item before taking it.
5. Any terms or conditions given the day of the auction will supersede previously published information.
6. THERE ARE A NUMBER OF HOTELS IN THE RICHMOND, INDIANA AREA WITH THE COMFORT INN AT EXIT 151, OFF I-70 BEING THE CLOSEST. PHONE: 765-935-4766

- 10 1. (2) St. Clair Cactus Tumblers – (1) Mari. (1) Blue (selling as a pair)
- 5 2. 1977 Lincoln Land Carnival Glass Club "Storybook" Mug – Blue
- 15 3. 1977 HOACGA Souvenir Hatpin Holder – Red (also including Hatpin w/o pin)
- 200 4. 1976 HOACGA Souvenir 8 pc. Whiskey Set – Red (complete and perfect)
- 30 5. (4) **MAKER (?) CUT COSMOS TUMBLERS – DK. MARI. (RARE ITEMS WITH GREAT COLOR; SELLING CHOICE)**
- 55 6. Jenkins Mayflower Water Pitcher and Tumbler – Lt. Mari. (scarce set)
- 15 7. Westmoreland Wide Panel 6 Ruffled Bowl – Teal and Westmoreland Lg. 6 Ruffled "Little Beads" ftd. Master Berry Bowl – Amyth.
- 20 8. N Graceful 6 Ruffled Vase – Green (nice example)
- 45 9. N Star of David and Bows deep 8 Ruffled Bowl – Green
- 425 10. **N WISHBONE 2 PC. EPERGNE – AMYTH. (PERFECT, WELL MATCHED AND REALLY DESIRABLE)**
- 95 11. N Wishbone 8 Ruffled Bowl with Plain ext. – Purp. (super example; nice color and irid.)
- 50 12. N Wishbone ftd. 8 Ruffled Bowl with Ruffles and Rings ext. – Amyth. (odd base color)
- 40 13. N Wishbone Tumbler – Purp. (scarce; nice)
- 50 14. N Rosette ftd. 8 Ruffled Bowl – Green (nice color and irid.)
- 800 15. **N ACORN BURR 8 PC. PUNCH SET – GREEN (RARE AND VERY DESIRABLE; A BEAUTY OF A SET; ONE BURR HAS A MANUF. SPLIT)**
- 800 16. **N ACORN BURR PUNCH SET – PURP. (ANOTHER RARE AND VERY DESIRABLE SET – NICE IRID.)**
- 375 17. **N ACORN BURR 7 PC. WATER SET – PURP. (RARE SET; ALWAYS DESIRABLE)**
- 200 18. **N ACORN BURR 6 PC. TABLE SET – PURP. (RARE & DESIRABLE; WELL MATCHED AND PERFECT)**
- 95 19. N Acorn Burr Master Berry Bowl with (3) individuals – Purp. (nice set, great color & irid.)
- 300 20. **N ACORN BURR 6 PC. TABLE SET – MARI. (ANOTHER VERY DESIRABLE SET; TOUGH TO FIND COMPLETE)**
- 50 21. N Acorn Burr Master Berry Bowl – Mari. (nice color and irid.)
- 80 22. N Acorn Burr Tumbler – Elec. Purp. (fantastic – find me the pitcher to match)
- 25 23. N Acorn Burr Tumbler – Green
- 10 24. N Acorn Burr Tumbler – Mari.
- 750 25. **N PEACOCK AT THE FOUNTAIN RUFFLED PUNCH BOWL AND BASE – PURP. (RARE; BASE HAS ELEC. BLUE HIGHLIGHTS)**
- 775 26. **N PEACOCK AT THE FOUNTAIN RUFFLED PUNCH BOWL AND BASE – WHITE (RARE AND VERY DESIRABLE; HAS A MANUF. CROWS FOOT IN BEADING ON EDGE)**
- 130 27. N Peacock at the Fountain Tumbler – odd Amyth. (nice color)
- 20 28. (1) N Peacock at the Fountain Tumbler – Mari. plus (1) N Peacock at the Fountain Tumbler – Ice Blue (Mari. is perfect; Ice Blue has a chipped base)
- 500 29. **N PEACOCK AT THE FOUNTAIN FTD. RUFFLED FRUIT BOWL – ELEC. BLUE (FANTASTIC EXAMPLE; GREAT DETAIL AND IRID.)**
- 575 30. **N PEACOCKS 8 RUFFLED BOWL WITH RIBBED EXT. – AQUA OPAL. (RARE; GREAT PASTEL IRID.; OPAL ON EDGE)**
- 210 31. N Peacocks 8 Ruffled Bowl with Ribbed ext. – Amyth. (scarce; nice color and irid.)
- 215 32. **N PEACOCKS PLATE WITH RIBBED EXT. – BLUE (VERY SCARCE; HAS SOME SILVERY HIGHLIGHTS)**
- 375 33. **N PEACOCKS AT THE URN LG. ICE CREAM BOWL – DK. MARI. (SUPER EXAMPLE; DARK WITH GREAT IRID.)**
- 310 34. N Memphis Ruffled Punch Bowl and Base – White (base is perfect – top has (2) big chips)
- 710 35. **N GREEK KEY 7 PC. TANKARD WATER SET – PURP. (RARE AND WELL MATCHED; FROM THE ED GUIDA COLLECTION)**
36. (3) N Greek Key Tumblers (1) each in Purple, Green, Marigold (selling choice)
- 175 37. N Grape Arbor Tankard Pitcher and (2) Tumblers – Dk. Mari. (great looking pitcher; selling as one)
- 45 38. **N GRAPE ARBOR TUMBLER – ICE BLUE (RARE; NICE COLOR AND IRID.)**
- 75 39. N Grape Arbor Tumbler – White (scarce; nice)

- 25 40. N Grape Arbor Tumbler – Purp. (nice example)
- 140 41. N G & C ftd. Hatpin Holder – Purp. (satiny; nice)
- 170 42. N G & C Cologne Bottle and Stopper – Purp. (scarce; great example)
- 65 43. N G & C Covered Powder Jar – Purp. (nice color and irid.)
- 180 44. N G & C Large Dresser Tray – Purp. (scarce; really nice irid.)
- 1950 45. **N G & C RUFFLED MID-SIZE PUNCH BOWL AND BASE – BLUE (EXTREMELY RARE SET; PERFECT WITH REALLY NICE IRID. – SOME GOLD HIGHLIGHTS)**
- 20x6 46. (6) N G & C Stippled Punch Cups – Blue (some great, some ugly; selling so much each for set)
- 45 47. N G & C Handled Bon Bon with Basketweave ext. – Purp. (super example)
- 40 48. N G & C Flared ftd. Plate with Meander ext. – Amyth. (satiny finish)
- 95 49. 11" N G & C Large 8 Ruffled Master Berry Bowl with (1) individual – Purp (master is really nice)
- 1500 50. **N G & C RUFFLED BANQUET PUNCH BOWL AND BASE WITH 7 CUPS – PURP. (RARE AND DESIRABLE SET; NICE)**
- 1700 51. **N G & C RUFFLED BANQUET PUNCH BOWL AND BASE WITH 11 CUPS – PURP. (RARE AND DESIRABLE SET; CUPS ARE SORTA LAVENDER)**
- 70 52. **8 1/2" N G & C VARIANT 8 RUFFLED BOWL WITH PLAIN EXT. – PURP. (GREAT COLOR AND IRID. – REDDISH HIGHLIGHTS)**
- 25 53. 6 1/4" N G & C Handgrip Plate with Basketweave ext. – Purp. (scarce; satiny with open bubble)
- 65 54. N G & C Handled Ruffled Nappy from Punch Cup – Purp. (light base color; gold highlights)
- 385 55. **N G & C 7 PC. WATER SET – GREEN (VERY SCARCE SET TO FIND IN THIS COLOR)**
- 75 56. N G & C Breakfast Sugar and Creamer – Green (very scarce pair; has super irid.)
- 195 57. N G & C 7 pc. Water Set – Purp. (scarce set)
- 75 58. N G & C Water Pitcher with (1) Tumbler – Dk. Mari. (nice color and irid.; pink highlights)
- 30 59. N G & C 6 Ruffled Hat from Tumbler – Purp. (really nice example)
- 385 60. **N G & C STANDARD SIZE PUNCH BOWL AND BASE – PURP. (TOP IS SUPER WITH BLUE HIGHLIGHTS)**
- 105 61. N G & C 7 pc. Berry Set – Purp. (scarce; nice color and irid.)
- 115 62. N G & C 8 pc. Berry Set – Purp. (nice set)
- 55 63. N G & C Covered Butter Dish with extra lid – Mari. (really nice irid.)
- 10 64. N G & C Table Creamer – Mari. (nice color)
- 600 65. **N G & C SMALL SIZE 3 FTD. RUFFLED FRUIT BOWL – ICE GREEN (VERY RARE & VERY DESIRABLE; GREAT COLOR & IRID.)**
- 135 66. N G & C Small size 3 ftd. Ruffled Fruit Bowl – Purp. (scarce; really nice irid.) P
- 85 67. N G & C ftd. Banana Boat – Purp. (scarce; goldish irid.)
- 330 68. **N G & C 5 PC. TANKARD WATER SET – PURP. (BEEN A WHILE SINCE I'VE SOLD ONE OF THESE)**
- 115 69. **N G & C COVERED COMPOTE – PURP. (VERY SCARCE; NICE COLOR AND IRID.)**
- 350 70. **N G & C COVERED SWEETMEAT COMPOTE – BLUE (EXTREMELY RARE; LID IS PERFECT; BOTTOM HAS CHIP ON BASE CORNER; TERRIBLY RARE BASE COLOR TO FIND, WHO NEEDS THE LID?)**
- 105 71. N G & C Covered Sweetmeat Compote – Purp. (scarce; nice color and irid.)
- 250 72. **N G & C LARGE OPEN COMPOTE – PURP. (RARE AND VERY DESIRABLE; NOT RUFFLED A LOT)**
- 75 73. N G & C Covered Cracker Jar – Dk. Mari. (very scarce; really nice color and irid.)
- 10x4 74. (4) N G & C Stippled Punch Cups – Mari. (selling so much each for set)
- 45x2 75. (2) N G & C Tankard Tumblers – (1) Green, (1) Mari. (rare tumblers; selling so much each)
- 15x3 76. (3) N G & C Tumblers – (1) Green, (2) Amyth. (selling so much each for set)
- 35 77. Lot of at least (8) damaged items – Misc. Colors (all items are "as is")
- 70 78. N Beaded Cable ftd. Ruffled Rose Bowl – Blue (silvery/gold irid.)
- 25 79. N Daisy and Plume ftd. Ruffled Rose Bowl – Purp. (silvery irid.)
- 500 80. **N GOOD LUCK PLATE WITH RIBBED EXT. – GREEN (VERY RARE AND VERY DESIRABLE; REALLY NICE EXAMPLE)**
- 295 81. **N GOOD LUCK BOWL WITH P.C.E. AND RIBBED EXT. – PURP. (SUPER EXAMPLE)**
- 75 82. N Good Luck 8 Ruffled Bowl with Ribbed ext. – Dk. Mari. (nice color and irid.)
- 500 83. **N ROSE SHOW 8 RUFFLED BOWL – AQUA OPAL. (RARE AND DESIRABLE; NICE OPAL.; LIGHT IRID.)**
- 435 84. **N POPPY SHOW 8 RUFFLED BOWL – PURP. (REALLY ATTRACTIVE EXAMPLE)**
- 1600 85. **N LATTICE AND POINSETTIA FTD. 8 RUFFLED BOWL WITH RIBBED EXT. – ELEC. BLUE (ABSOLUTELY FANTASTIC)**
- 200 86. N Lattice and Poinsettia ftd. 8 Ruffled Bowl with Ribbed ext. – Mari. (scarce item; average irid.)
- 300 87. **N DAISY AND DRAPE FTD. FLARED VASE – AQUA OPAL. (RARE AND VERY DESIRABLE; NICE EXAMPLE)**
- 425 88. **N DAISY AND DRAPE FTD. TURNED IN VASE – PURP. (REALLY SCARCE AND VERY ATTRACTIVE)**
- 75 89. N Daisy and Drape ftd. Turned in Vase – White (scarce; nice)
- 525 90. **N DANDELION MUG WITH KNIGHTS TEMPLAR SOUVENIR – ICE GREEN (RARE & VERY DESIRABLE; PERFECT WITH AVERAGE IRID.)**
- 260 91. **N DANDELION MUG WITH KNIGHTS TEMPLAR SOUVENIR – MARI. (RARE AND DESIRABLE; NICE COLOR AND IRID.)**
- 100 92. N Dandelion Handled Mug – Aqua Opal. (has a smoothed spot on base rim)
- 225 93. **N DANDELION HANDLED MUG – GREEN (VERY RARE & DESIRABLE; EXCELLENT EXAMPLE)**

- 160 94. N DANDELION HANDLED MUG – BLUE (RARE COLOR WITH NICE IRID.)
- 65 95. N Dandelion Handled Mug –Purp. (scarce; nice)
- 75 96. N DANDELION HANDLED MUG – DK. MARI. (SCARCE; REALLY NICE COLOR & IRID.)
- 35 97. 10 1/2" Tall N Diamond Point Swung Vase – Purp. (super irid.)
- 55 10 98. (2) N Springtime Tumblers – (1) Purp., (1) Mari. (selling so much each for pair)
- 22/299. N Springtime Sugar base only – Purp.
- 3 600 100. N POPPY RUFFLED RELISH TRAY WITH RIBBED EXT. – MARI./CUSTARD (I LOVE THIS GUY! DARK MARIGOLD AND EXTREMELY RARE)
- 300 101. N THREE FRUITS MEDALLION FTD. RUFFLED BOWL WITH MEANDER EXT. – ICE BLUE (RARE; GREAT IRID.)
- 85 102. N Three Fruits Plate with Basketweave ext. – Amyth. (nice satiny finish)
- 25 103. N Fruits and Flowers Stemmed Handled Bon Bon – Purp. (nice satiny finish)
- 45 104. 9 3/4" N Fruits and Flowers Lg. 8 Ruffled Bowl w/ Basketweave ext. – Mari. (scarce; nice irid.)
- 300 105. N CHERRY AND CABLE HANDLED WATER PITCHER – MARI. TO CLEAR (REALLY TOUGH PITCHER TO FIND)
- 350 106. N TORNADO LG. TRI-CORNERED VASE – GREEN (RARE; VERY DESIRABLE; NICE COLOR AND IRID.)
- 360 107. N CORN VASE WITH PLAIN BASE – PURP. (VERY SCARCE AND VERY DESIRABLE)
- 410 108. N Ivy Town Pump Novelty – Purp. (rare item; only top half is iridized)
- 285 109. N EMBROIDERED MUMS 8 RUFFLED BOWL WITH RIBBED EXT. – BLUE (VERY DESIRABLE; DARK WITH REDDISH HIGHLIGHTS)
- 450 110. N DAISY AND PLUME 3 FTD. ROSE BOWL WITH BERRY INT. – ICE GREEN (VERY RARE; PERFECT WITH GREAT COLOR)
- 95 111. 7 1/2" Tall N Drapery Swung Vase – Ice Green (perfect feet – how bout that!)
- 45 112. Pr. 8" Tall N 6 Paneled Stretch Candlesticks – Russet Green (scarce)
- 30 113. N Fine Cut and Roses ftd. Rose Bowl – Green (really nice example; minor foot flakes)
- 25 114. N Fine Cut and Roses ftd. Rose Bowl – Amyth. (silvery finish)
- 155 115. N STRAWBERRY PLATE WITH PLAIN EXT. – AMYTH. (SCARCE WITH MULTI-COLORED IRID.)
- 65 116. N Grape and Gothic Arches Covered Butter Dish – Pastel Mari. (very attractive)
- 117. (2) N Flute Tumblers – (1) Green, (1) Mari. (selling so much each for pair; the Green example is rare)
- 100 118. (2) N Peach Tumblers – (1) White, (1) Blue (selling so much each for pair)
- 12/119. N Concave Diamond Stretch Tumbler – Celeste Blue (nice example)
- 400 120. N WISTERIA TUMBLER – ICE BLUE (RARE AND VERY DESIRABLE ITEM)
- 130 121. N ORIENTAL POPPY TUMBLER – ICE BLUE (PROBABLY THE BEST I'VE SEEN)
- 225 122. N ORIENTAL POPPY TUMBLER – BLUE (RARE, RARE BASE COLOR)
- 10 123. (2) N Oriental Poppy Tumblers – (1) Amyth., (1) Green (scarce; selling so much each for pair)
- 12 1/2 x 2 124. (2) N Oriental Poppy Tumbler – Mari. (selling so much each for set)
- 925 125. N DANDELION 7 PC. TANKARD WATER SET – PURP. (WHATTA WATER SET! ABSOLUTELY BEAUTIFUL!)
- 145 126. N DANDELION TUMBLER – ICE BLUE (RARE AND VERY DESIRABLE)
- 75 127. N DANDELION TUMBLER – WHITE (VERY SCARCE AND DESIRABLE)
- 40 128. N Dandelion Tumbler – Amyth. (super irid.)
- 15 129. (2) N Dandelion Tumblers – (1) Mari. (1) Green (selling so much each for set)
- 25 130. N SINGING BIRD HANDLED MUG – AQUA OPAL. (RARE AND VERY DESIRABLE; PASTEL EXAMPLE)
- 300 131. N SINGING BIRD HANDLED MUG – ICE BLUE (RARE AND VERY DESIRABLE; LIGHT IRID.)
- 225 132. N SINGING BIRD HANDLED MUG – WHITE (RARE AND VERY DESIRABLE; NICE)
- 35 133. N Singing Bird Handled Mug – Green (bright base color with average irid.)
- 25 x 2 134. (2) N Singing Bird Handled Mugs – Blue (selling so much each for pair)
- 30 x 2 135. (2) N Singing Bird Handled Mugs – Purp. (selling so much each for pair)
- 300 136. N STIPPLED SINGING BIRDS MUG – GREEN (SUPER EXAMPLE FOR THIS ITEM; BRIGHT MULTI-COLORED IRID.)
- 800 137. N STIPPLED SINGING BIRDS MUG – PURP. (NICE EXAMPLE; REALLY RARE)
- 150 138. N STIPPLED SINGING BIRDS MUG – BLUE (RARE ITEM WITH AVERAGE IRID.)
- 25 x 2 139. (2) N Stippled Singing Birds Mugs – Dk. Mari. (selling choice; both are nice)
- 300 140. N SINGING BIRD 7 PC. WATER SET – MARI.(VERY SCARCE & VERY DESIRABLE)
- 10 x 3 141. (3) N Singing Bird Tumblers – (1) Purp., (1) Amyth., (1) Green (selling so much each for set)
- 300, 125 142. (2) N DRAPERY ROSE BOWLS – AQUA OPAL. (ONE IS SUPER PASTEL; ONE IS BUTTERSCOTCH; SELLING CHOICE)
- 15 x 2 143. (2) N Raspberry Tumblers – (1) Green, (1) Pastel Mari. (selling so much each)
- 10 x 3 144. (3) N Raspberry Tumblers – Dk. Mari. (selling so much each for set; nice color)
- 310 145. N RASPBERRY 6 PC. WATER SET – PURP. (SCARCE; PITCHER REALLY NICE IRID.)
- 110 146. N Raspberry Handled Water Pitcher – Purp. (sorta satiny finish)
- 90 147. N Raspberry Handled Milk Pitcher – Purp. (very scarce and desirable; nice)
- 17 1/2 148. (2) N Tumblers – Interior Swirl; Grape and Gothic Arches – Dk. Mari. (selling so much each for pair)

- \*  
155 149. N Eight Sided Bushel Basket – Elec. Blue (super, super interior irid.)  
55 150. N Round Bushel Basket – Blue (scarce)  
40 151. N Round Bushel Basket – White (scarce shape has manuf. line in top of (1) handle)  
25 152. N Round Bushel Basket – Mari. (nice color)  
25 153. (3) Misc. Hatpins; Cut Faceted, Butterflies, and Bird – Dark (selling choice)  
15 154. Imperial Flute Toothpick Holder – Purp. (nice)  
500 155. **13" TALL X 4 7/8" BASE X 10 1/2" FLARE IMPERIAL MORNING GLORY SWUNG VASE – PURP. (A VERY DESIRABLE ITEM; NICE)**  
150 156. **IMPERIAL CHATELINE TUMBLER – PURP. (RARE AND DESIRABLE; HAS GOLD AND BLUE HIGHLIGHTS)**  
155 157. **IMPERIAL WINDMILL TUMBLER – PURP. (ABSOLUTELY SUPER EXAMPLE)**  
40 158. Imperial Tiger Lily Tumbler – Purp. (super example)  
30 159. Imperial Lustre Rose Tumbler–Purp.(super)  
400 160. **IMPERIAL LUSTRE ROSE 7 PC. WATER SET – AMBER (HOW MANY OF THESE DO YA SEE... A VERY RARE SET)**  
65 161. Imperial Lustre Rose Pitcher and (1) Tumbler – Mari. (both for one money)  
45 162. (2) Imperial Lustre Rose Tumblers – (1) Clambroth, (1) Green (both for one money)  
25 163. Imperial Diamond Lace Tumbler – Purp. (really nice irid.)  
60 164. Imperial Grape Tumbler – Amber (odd satiny finish – very scarce)  
70 165. **IMPERIAL LOGANBERRY VASE – AMBER (RARE AND ALWAYS DESIRABLE; GREAT BASE COLOR WITH NICE IRID.)**  
80 166. (2) Imperial Grape Water Carafes – Amyth. (amethyst example mint; the other is damaged)  
80 167. Imperial Fashion Tumbler – Smoke (rare base color with an odd tint)  
25 168. Imperial Tumbler – Smoke (scarce)  
90 169. Imperial Flute Tumbler – Purp. (rare variation; nice dark color and irid.)  
500 170. **IMPERIAL GRAPE 6 PC. WATER SET – PURP. (VERY SCARCE SET; HAS NICE COLOR AND IRID.)**  
170 171. 8" Imperial Crab Claw Deep Round Bowl – Purp. (a rare and really desirable bowl; has a small flake on inside of one point)  
70 172. 8 3/4" Imperial Hattie Flared Bowl – Smoke (super irid.)  
60 173. Imperial Waffle Block Punch Bowl and Base – Mari. (scarce; nice irid.)  
10 174. Imperial Windmill Tumbler – odd Green/Mari. (odd base color with beautiful irid.)  
90 175. **8 1/2" TALL IMPERIAL BEADED BULLSEYE ODD SWUNG VASE – GREEN (THIS IS THE ODDEST SHAPE I'VE SEEN)**  
60 176. Imperial Tiger Lily 7 pc. Water Set – Mari. (desirable with really nice irid.)  
55 177. I.G. Tiger Lily Water Pitcher – Ice Blue (nice item; has original label)  
40 178. Imperial Grape Wine Decanter, Stopper and (2) Wines – Dk. Mari. (selling for one money)  
5x3 179. Lot (3) Imperial Tumblers; Small and Large Star Medallions and Soda Gold – Mari. (selling so much each for set)  
5 27 180. Lot (4) Imperial Tumblers; 474, Crab Claw, Imperial Grape, Fashion – Mari. (selling so much each for set)  
5x4 181. Lot (4) Imperial Tumblers; Field Flower, Hobstar Band, Star and File, Small Octagon – Mari. (selling so much each for set)  
10x3 182. Lot (4) Imperial Handled items; Wide Panel Mug, (2) Robin Mugs, Flute and Cane Cup – signed Iron Cross – Mari. (selling so much each for set)  
2 183. (3) Imperial Lustre Fruit Tumblers – Mari. (selling so much each for set)  
25 184. 1909 Louisville, KY Shriners ftd. Champagne Glass – Clear  
120 185. **U.S. GLASS COSMOS AND CANE TUMBLER WITH "J.R. MILNER AND CO.; LYNCHBURG, VA." ADVERTISING– HONEY AMBER (VERY SCARCE AND A PRETTY DESIRABLE TUMBLER)**  
10 x2 186. (2) U.S. Glass Cosmos and Cane Tumblers – (1) Mari., (1) Honey Amber (selling so much each for pair)  
80 187. 9" U.S. Glass Cosmos and Cane 8 Ruffled Bowl – White (scarce; frosty with great irid.)  
100x2 188. Westmoreland "Bo Peep" Handled Mug and "Estate" Handled Mug – Mari. (two tough items; selling so much each for pair)  
75 189. Eta Glass Company Curved Star Celery Vase – Dk. Mari. (dark color and very attractive)  
250 190. **AUSTRALIAN "PIN UP" CUPPED IN BOWL – PURP. ( RARE ENOUGH BOWL THAT I HAVEN'T SEEN TOO MANY– REALLY NICE)**  
295 191. **9 1/2" AUSTRALIAN THUNDERBIRD LG. 12 RUFFLED BOWL – PURP. (VERY SCARCE AND A BEAUTIFUL EXAMPLE)**  
15 192. Sowerby Pineapple Rose Bowl – Dk. Mari. (great color and irid.)  
15 x2 193. (2) European ftd. Rose Bowls; (1) is Kokomo – Mari. (selling so much each for pair)  
110 194. **UNUSUAL EUROPEAN 5 LILY EPERGNE WITH SILVER PLATE FRAME – MARI. (RARE & REALLY DESIRABLE – UNUSUAL)**  
110 195. **PAIR DIAMOND GLASS CO. LUSTRE AND CLEAR BELL SHAPED CANDLESTICKS – RED (RARE PAIR)**  
25 196. Diamond Glass Co. Handled Lemonade Mug – Blue (initialed "E.F." & these are tough to find)  
90 197. 11 1/4" Dugan Persian Garden Lg. Ice Cream Bowl – White (scarce; desirable)  
15 198. 5 3/4" Dugan Persian Garden individual Ice Cream Bowl – White (nice irid.)  
135 199. 6 3/4" Dugan Grapevine Lattice low 8 Ruffled Bowl – White (super irid.)  
3500 200. **DUGAN FARMYARD LG. BOWL WITH 3 IN 1 CANDY RIBBON EDGE – PURP. (IMPRESSIVE BOWL WITH CHICKENS; NICE GOLD HIGHLIGHTS)**  
120 201. 11 1/4" Dugan Victorian Lg. 6 Ruffled Bowl – Purp. (very scarce; nice satiny finish)

- 150 202. 10 3/4" Dugan Heavy Grape Lg. 8 Ruffled Bowl with Compass ext. – Amyth. (rare bowl in this size; average irid.)
- 70 203. Dugan Cherry Wreath Lg. Ruffled Oval Berry Bowl with (2) individuals – Amyth. (selling all 3 for one money)
- 15 X 3 204. (4) Dugan Vineyard Tumblers – Purp. ((1) as is; selling the other (3) for so much each)
- 275 205. **DUGAN STORK IN THE RUSHES WITH BEADED BAND 7 PC. WATER SET – BLUE (RARE; BRIGHT SATINY FINISH)**
- 10 X 4 206. (4) Dugan Stork in the Rushes Tumblers (1) Mari. – Beaded, (2) Lattice Band – Mari., (1) Lattice Band – Blue (four times the money)
- 5 X 4 207. Lot (4) Dugan Tumblers; Rambler Rose, Daisy and Lattice, Floral and Grape, Vineyard – Mari. (selling 4 times the money)
- 55 208. Dugan Cherry Wreath Tumbler – Purp. (scarce; nice color)
- 5 209. (2) Dugan Cherry Wreath Tumblers – Mari. (selling as one lot; one chipped)
- 275 210. **DUGAN CHERRY WREATH WATER PITCHER AND (1) TUMBLER – WHITE (SELLING BOTH ITEMS FOR ONE MONEY; SUPER FROSTY FINISH)**
- 60 X 2 211. (2) Dugan Tumblers; Dahlia, Floral and Grape – White (selling so much each for pair)
- 235 212. **DUGAN HEAVY IRIS TUMBLER – WHITE (SUPER EXAMPLE WITH EXCELLENT IRID.)**
- 15 X 2 213. (2) Dugan Heavy Iris Tumblers – (1) Purple, (1) Dk. Mari. (attractive pair; selling per each)
- 25 X 3 214. (3) Dugan Beaded Shell Tumblers – Blue, Mari., Amyth. (selling 3 times the money)
- 290 215. **DUGAN BEADED SHELL HANDLED MUG – WHITE (EXTREMELY RARE AND A REALLY ATTRACTIVE EXAMPLE)**
- 30 X 3 216. (3) Dugan Beaded Shell Handled Mugs – Mari., Blue, Purp. (selling 3 times the money)
- 20 X 2 217. Dugan Stork in the Rushes and Dugan Beaded Shell Mugs – Amyth. (selling so much each for pair)
- 5 X 3 218. (2) Dugan Stork in the Rushes Mugs and a Vintage Banded Mug – Mari. (selling 3 times the money)
- 100 219. Dugan Fisherman's Mug – Dk. Mari. (nice dark color; great detail)
- 525 220. **DUGAN FISHERMAN'S MUG – P. OPAL. (RARE, DESIRABLE; NICE OPAL & DETAIL)**
- 40 X 2 221. (2) Dugan Fisherman's Mugs – Purp. (selling so much each for pair)
- 10 X 2 222. (2) Dugan Heron Handled Mugs – Purp. (very scarce; selling so much each for pair)
- 15 X 2 223. Dugan Peacock at the Fountain Tumbler; Dugan Rambler Rose Tumbler – Blue (selling so much each for pair)
- 15 X 2 224. (2) Dugan Maple Leaf Tumblers – (1) Dk. Mari., (1) Purp. (selling so much each for pair)
- 85 225. **DUGAN GOD AND HOME TUMBLER – BLUE (RARE; DESIRABLE; NICE COLOR AND DETAIL)**
- 25 226. Dugan Lattice and Daisy Tumbler – Amyth. (scarce color; very nice example)
- 20 227. Dugan Jeweled Heart Tumbler – Mari. (bright highlights)
- 5 X 2 228. (3) Dugan Grapevine Lattice Tumblers – (2) Purp., (1) Dk. Mari. (selling 3 times the money)
- 20 X 2 229. U.S. Glass White Oak and Dugan Harvest Flower Tumblers – Lt. Mari. (selling so much each for pair)
- 700 230. **DUGAN MANY FRUITS 8 PC. RUFFLED PUNCH SET WITH UNUSUAL FLARED BASE – LIGHT AMYTH. (THIS IS MY FAVORITE; BEAUTIFUL IRID. & HAS LIGHT BASE COLOR)**
- 70 231. (2) Dugan S Repeat Punch Cups - Amyth.; Dugan Many Fruits Punch Cup – Mari. (selling all 3 for one price)
- 15 X 2 232. 9" Dugan Big Basketweave Swung Vase; Dugan Mary Ann Handled Vase – Mari. (selling so much each for pair)
- 30 233. Dugan Garden Path Variant Lg. Rose Bowl with Soda Gold ext. – Mari. (scarce; satiny)
- 5 234. Dugan Rose Wreath Rose Bowl – Amyth. (satiny finish)
- 80 235. **DUGAN GRAPE ARBOR LG. 4 FTD. BOWL WITH I.F.F. EXT. – AMYTH. (VERY SCARCE WITH A SATINY FINISH)**
- 225 236. **DUGAN BUTTERFLY AND TULIP 4 FTD. 2 SIDED BOWL WITH I.F.F. EXT. – MARI. (ODD SHAPE; PRETTY TOUGH ITEM)**
- 25 237. Dugan Grape Delight 6 ftd. Rose Bowl – Black Amyth. (gold highlights)
- 20 238. Dugan Grape Delight 6 ftd. Nut Bowl – Blue (satiny finish)
- 30 X 2 239. (2) 6 1/4" Dugan Cherries 8 Ruffled low Bowl/Plates with Jeweled Heart ext. – Amyth. (selling so much each for pair)
- 150 240. 8 1/2" Dugan Round Up Bowl with 3 in 1 Edge – Blue (scarce item; nice color; satiny)
- 35 241. 9 1/2" Dugan Cosmos Variant Lg. 6 Ruffled Bowl – Purp. (scarce color)
- 40 242. Dugan Paneled Cherries 3 ftd. 10 Ruffled Bowl – Purp. (scarce; fair irid.)
- 15 243. 7 3/4" Dugan Six Petals 6 Ruffled Crimped Edge Bowl – P. Opal. (nice opal.)
- 45 244. Dugan Honeycomb Rose Bowl – P. Opal. (one of the better examples; nice)
- 60 245. Dugan Ski Star 5 pc. 6 Ruffled Berry Set with Compass ext. – P. Opal. (well matched)
- 75 246. 8" Dugan Flowers and Frames domed deep 10 Ruffled Bowl – P. Opal. (scarce; nice color and opal.)
- 40 247. Dugan Nautilus Creamer Novelty – P. Opal. (scarce; has spotty interior irid.)
- 25 X 2 248. 11" Dugan Petal and Fan and Interior Rays Lg. 6 Ruffled Bowls; both with Jeweled Heart ext. – P. Opal. (average examples)
- 20 249. Bennett Inverted Strawberry Tumbler – Blue (beautiful example; signed with the "B")
- 165 250. **CAMBRIDGE INVERTED STRAWBERRY LG. FTD. ROUND COMPOTE – AMYTH. (RARE AND DESIRABLE)**
- 55 251. 9 1/2" Cambridge Inverted Strawberry Lg. Ice Cream Shaped Bowl – Green (actually quite a rare item; great base color)

- 145, 35 252. (2) Cambridge Inverted Strawberry Tumblers – Amyth. (very scarce; selling choice)
- 75 253. Cambridge Inverted Strawberry Handled Creamer – Amyth. (very scarce; satiny)
- 30 254. Cambridge Double Star Tumbler - Green (nice example)
- 100 255. **CAMBRIDGE INVERTED FEATHER PUNCH BASE ONLY – GREEN (VERY RARE PART TO A VERY RARE PUNCH SET!!!)**
- 25 256. Cambridge Inverted Feather Covered Cracker Jar – Green (lid is good; large chip on base)
- 125 257. Cambridge Inverted Thistle Tumbler – Amyth. (scarce; has average irid.)
- 5 258. Cambridge Inverted Thistle Sugar Base only – Amyth. (scarce part; this piece has seen some action... high wear marks)
- 25 259. Cambridge Near Cut Handled Souvenir Mug "Graceville, Minn." – Mari. (scarce; nice)
- 1200 260. **M'BURG PEACOCKS ICE CREAM SHAPED BOWL – AMYTH. (AN ABSOLUTE BEAUT!!! RADIUM WITH BLUES AND REDS)**
- 200 261. **9 1/2" M'BURG PEACOCK DEEP FLARED MASTER BERRY BOWL – AMYTH. (ANOTHER RADIUM BEAUTY WITH RED AND GOLD HIGHLIGHTS)**
- 55x4 262. (4) 5-5 1/2" M'burg Peacock Flared individual Berry Bowls – Amyth. (radium – really nice!!!... selling so much each!) 100 20 1
- 225 263. **10" M'BURG PEACOCK AT THE URN LG. ICE CREAM BOWL – GREEN (VERY NICE WITH A SATINY FINISH)**
- 200 264. **10 1/4" M'BURG PEACOCK AT THE URN LG. 6 RUFFLED BOWL – GREEN (ANOTHER TOUGH ITEM TO FIND; REALLY NICE IRID.)**
- 150 265. **M'BURG MULTI-FRUITS AND FLOWERS FLARED PUNCH BOWL AND BASE – AMYTH. (RARE; DESIRABLE WITH A SATINY FINISH)**
- 25 266. M'burg Hobstar and Feather Handled Punch Cup – Amyth. (nice color and irid.)
- 10x10 267. (10) M'burg Hobstar and Feather Handled Punch Cups – Mari. (satiny examples; selling so much each)
- 90 268. **M'BURG COUNTRY KITCHEN HANDLED CREAMER – AMYTH. (VERY SCARCE ITEM WITH NICE RADIUM HIGHLIGHTS)**
- 40 269. M'burg Hanging Cherries Butter Base only – Amyth. (Boy!!!...if you need one)
- 500 270. **M'BURG HANGING CHERRIES HANDLED WATER PITCHER – AMYTH. (RARE; DESIRABLE WITH A SATINY FINISH – REALLY, REALLY TOUGH TO FIND)**
- 40 271. M'burg Hanging Cherries Tumbler – Green (quite scarce but has a small chip on base)
- 475 272. **9 1/4" M'BURG HANGING CHERRIES ICE CREAM BOWL WITH HOBNAIL EXT. – AMYTH. (VERY RARE ITEM IF YOU'RE LOOKING FOR IT)**
- 145 273. 9 3/4" M'burg Hanging Cherries Lg. Ice Cream Bowl – Amyth. (a beautiful satiny example)
- 55 274. M'burg Mayan I.C. Shaped Bowl – Green (super radium)
- 2,100 275. **M'BURG BIG FISH 4 SIDED WHIMSEY BOWL – AMYTH. (1ST OF ALL... THIS IS "AS IS" – LARGE CRACK, BUT... WHAT A SHELF PIECE...THIS HAS TO BE ONE OF THE MOST BEAUTIFUL PIECES OF MILLERSBURG I'VE EVER SEEN... SERIOUSLY!!!)**
- 75 276. 10" M'burg Holly Whirl 6 Ruffled Bowl – Amyth. (scarce; satiny)
- 25 277. 10" M'burg Holly Whirl 6 Ruffled Bowl – Mari. (satiny finish)
- 95 278. 9 3/4" M'burg Rays and Ribbons 6 Ruffled Bowl – Amyth. (really attractive radium finish)
- 55 279. 10" M'burg Primrose 6 Ruffled Bowl – Amyth. (satiny; nice)
- 335 280. **8 3/4" M'BURG SEAWEED LOW PLATE/ I.C. BOWL – AMYTH. (RARE AND VERY DESIRABLE; SATINY AND PERFECT)**
- 70 281. 10" M'burg Whirling Leaves 6 Ruffled Bowl – Amyth. (satiny; nice)
- 100 282. 10" M'burg Whirling Leaves 6 Ruffled Bowl – Green (satiny finish)
- 35 283. 10" M'burg Whirling Leaves 6 Ruffled Bowl – Mari. (satiny finish)
- 100 284. M'burg Nesting Swan 6 Ruffled Bowl – Green (radium with bright base color; a little wear & tear)
- 1100 285. **7 3/4" M'BURG TWO EYED ELKS ICE CREAM SHAPED BOWL – AMYTH. (VERY RARE AND VERY DESIRABLE; GOLD HIGHLIGHTS – RADIUM AND MINT)**
- 650 286. **6 1/2" M'BURG LETTERED COURTHOUSE ICE CREAM SHAPED BOWL – AMYTH. (EXAMPLES AROUND BUT THIS ONE IS AS NICE AS ANY – RADIUM AND MINT)**
- 85 287. 8 3/4" M'burg Strawberry 6 Ruffled Crimped Edge Bowl – Amyth. (nice radium finish)
- 205 288. **M'BURG LEAF AND LITTLE FLOWERS 6 RUFFLED MINIATURE COMPOTE – AMYTH. (RARE MINI. ITEM; RADIUM & DESIRABLE)**
- 380 289. **6" M'BURG "THE GREAT HOUSE OF ISAAC BENESCH AND SONS" 6 RUFFLED BOWL – AMYTH. (A VERY DESIRABLE ADVERTISING ITEM; NICE)**
- 510 290. **M'BURG HOBNAIL SPITTOON – AMYTH. (A LIGHTER BASE COLOR; RARE AND VERY ATTRACTIVE)**
- 195 291. M'burg Swirl Hobnail Rose Bowl – Purp. (scarce and desirable; nice)
- 130 292. M'burg Diamond Water Pitcher and (3) Tumblers – Mari. (selling as a 4 pc. Set – all in good shape)
- 50 293. M'burg Diamond Tumbler – Amyth. (super radium example)
- 605 294. M'burg Diamond Tumbler – Green (super radium example)
- 450 295. **M'BURG ZIG ZAG TRI-CORNERED CRIMPED EDGE BOWL – AMYTH. (RARE AND ALWAYS HAS BEEN IN DEMAND)**
- 300 296. **(2) M'BURG PERFECTION TUMBLERS – AMYTH. (ONE IS MAYBE... AVERAGE; NOW THE OTHER... IS ANOTHER STORY – BLUES AND REDS)**
- 75

425 Gr mar. lyp  
630 Vintage 1940s  
130 2 cups w/enth  
Vintage 1940s  
Fenton pitcher purple  
Vintage 1940s  
Vintage 1940s  
Vintage 1940s

713 to Ohio Starburst

- 310 297. M'burg Feather and Heart 7 pc. Water Set – Mari. (scarce and desirable set; the pitcher is more pastel)
- 25 298. M'burg Feather and Heart Tumbler – Mari. (sorta radium)
- 30 299. M'burg Feather and Heart Tumbler – Amyth. (very scarce; satiny and nice)
- 350 300. M'BURG MANY STARS BOWL WITH 3 IN 1 EDGE – AMYTH. (SUPER RADIUM FINISH – ALMOST LIKE A MIRROR)
- 25 301. M'burg Marilyn Tumbler – Amyth. (very scarce; average color)
- 25 302. M'burg Marilyn Tumbler – Mari. (very scarce; average color)
- 40 303. (2) Fenton Sailboat 6 Ruffled Sauces and Blackberry 2 Row Open Edge 6 Ruffled Hat – Mari. (selling all 3 for one money)
- 25 304. Fenton Blackberry 2 Row Open Edge Hat – Amyth. (scarce; has a lot of straw marks)
- 100 305. FENTON 2 ROW OPEN EDGE 6 RUFFLED HAT-RED (RARE & DESIRABLE; NICE)
- 230 306. 7" FENTON ACORN DEEP ROUND BOWL – RED (RARE AND DESIRABLE; REALLY NICE COLOR AND IRID.)
- 50 307. 7" Fenton G & C Deep Round Bowl – Aqua (scarce and very attractive item)
- 30 308. Fenton Lotus and Grape 2 sided 2 Handled Bon Bon – Blue (nice color and detail)
- 50 309. 9 1/2" Fenton Cherry Chain Lg. 8 Ruffled Bowl with Orange Tree ext. – Blue (satiny finish)
- 375 310. FENTON APPLE TREE BULBOUS WATER PITCHER – BLUE (ONE OF THE MORE ATTRACTIVE EXAMPLES; RARE & NICE)
- 30 311. (2) Fenton Apple Tree Tumblers – (1) Lt. Mari., (1) Blue (selling the pair)
- 7 1/2 x 3 312. Fenton Lattice and Grape, Floral and Grape, Butterfly and Berry Tumblers – Blue (selling so much each for set)
- 90 313. Fenton Ground Cherries Enameled 7 pc. Bulbous Water Set – Blue (nice color)
- 10 x 2 314. Enameled Cherries and Enameled Forget Me Not Tumblers – Blue (selling so much each)
- 355 315. FENTON ZIG ZAG 7 PC. WATER SET WITH PRISM BAND TUMBLERS WITH ENAMELED DECORATED CHRYSANTHEMUM DECORATION – MARI. (THIS, I'M THINKING... HAS TO BE A RARE SET) 30-75
- 2 x 10 316. (2) Fenton Milady Tumblers – (1) Blue, (1) Mari. (selling so much each)
- 35 x 2 317. (2) Fenton 10 Mums Tumblers – (1) Blue, (1) Mari. (really nice/selling so much each)
- 25 x 2 318. (2) Fenton Blueberry Tumblers – (1) Blue, (1) Mari. (selling so much each)
- 15 x 2 319. (2) Fenton Bouquet Tumblers – (1) Blue, (1) Mari. (selling so much each)
- 200 320. FENTON ORANGE TREE SHAVING MUG – RED (RARE; ATTRACTIVE; BRIGHT IRID.)
- 150 321. FENTON ORANGE TREE SHAVING MUG – RED SLAG (HAS A SILVERY FINISH; HAS MANDARIN RED BASE GLASS)
- 20 x 3 322. (3) Fenton Orange Tree Shaving Mugs – (2) Blue, (1) Mari. (selling so much each)

- 100 323. FENTON STANDARD SIZE ORANGE TREE MUG – RED/AMBERINA (NICE COLOR, NICE DETAIL; ATTRACTIVE)
- 30 324. Fenton Standard size Orange Tree Mug – Mari./Vaseline (nice base color with a dark overlay)
- 20 325. Fenton Standard size Orange Tree Mug – Green (really rare, has a large flake on base)
- 25 x 30 326. (2) Fenton Standard size Orange Tree Mugs – Amyth. (selling choice; very scarce)
- 20 327. Fenton Standard size Orange Tree Mug – Black Amyth (silvery/rare dark purple example)
- 40 328. FENTON STANDARD SIZE ORANGE TREE MUG – AMBER (VERY RARE BASE COLOR; NICE DETAIL)
- 50 329. FENTON STANDARD SIZE ORANGE TREE MUG – AQUA (RARE BASE COLOR – NICE)
- 75, 40, 40 x 2 330. (4) FENTON STANDARD SIZE ORANGE TREE MUGS – SAPPHIRE (ONE EXAMPLE IS SUPER; SELLING CHOICE)
- 10 331. (2) Fenton Standard size Orange Tree Mugs – (1) Blue, (1) Mari. (selling pair for one money)
- 40 332. Fenton Holly Stemmed 6 Ruffled Compote – Green (scarce; nice color)
- 10 333. Fenton Iris Buttermilk Goblet – Amyth. (nice color)
- 20 334. Fenton Many Ribs ftd. 6 Ruffled Vase – Blue (sorta silvery; scarce)
- 40 335. Fenton Kittens Cereal Bowl – Blue (cracked)
- 225 336. FENTON KITTENS TOOTHPICK HOLDER – BLUE (VERY SCARCE; NICE COLOR AND DETAIL)
- 110 x 2 337. (2) FENTON KITTENS CUPS AND SAUCERS – MARI. (VERY NICE AND WELL MATCHED; SELLING CHOICE)
- 90 338. Fenton Kittens Saucer (or plate) – Mari. (if ya need one!!!)
- 45 x 3 339. (3) Fenton Kittens items; 2 sided, 6 Ruffled and 4 sided bowls – Mari. (selling choice)
- 160 340. Fenton Kittens Cereal Bowl – Mari. (nice color and detail)
- 50 341. Fenton Kittens Toothpick Holder – Mari. (scarce with nice color and detail)
- 342. (2) Fenton Peacock at the Urn Flared Stemmed Compote – (1) Mari./Vaseline, (1) Lt. Mari./Vaseline (really scarce; one light irid.; one dark; selling choice) 30
- 225 343. 9" FENTON PEACOCK AT THE URN FLARED PLATE – BLUE (RARE AND REALLY, REALLY PRETTY)
- 150 344. 8 1/2" Fenton Peacock at the Urn Ice Cream Shaped Bowl – Blue (matches item above)
- 975 345. FENTON BIRMINGHAM AGE HERALD 6 RUFFLED BOWL – AMYTH. (YEAH...THESE ARE SORTA TOUGH TO FIND... ESPECIALLY IN BIRMINGHAM)
- 40, 35, 35, 30 346. (4) Fenton Fluffy Peacock Tumblers – Blue, Green, Amyth, Mari. (nice; selling choice)
- 120 347. Fenton Horsehead Medallion 3 ftd. J.I.P. Bowl – Blue (very scarce; really nice satiny example)
- 40 348. 8 1/2" Fenton Captive Rose 6 Ruffled Bowl – Amyth. (very attractive)



- 30 349. 10 1/2" Fenton Peacock Tail Lg. 6 Ruffled Bowl - Green (nice item)
- 600 350. **FENTON ORANGE TREE SCROLL TANKARD WATER PITCHER WITH (1) TUMBLER - BLUE (VERY RARE; A TOUGH ITEM TO FIND; NICE)**
- 45 351. (2) Fenton Footed Orange Tree Tumblers - (1) Mari., (1) White - (selling the pair; white example has chipped foot)
- 325, 25 352. **(2) FENTON FOOTED ORANGE TREE TUMBLERS - BLUE (NOTICE THE DIFFERENT VARIATIONS; ONE WITHOUT THE BAND IS RARE)** 300-500
- 70 353. 13" Tall Fenton Plume Panels Swung Vase - Green (very tall; nice color)
- 90 354. 17" Tall Fenton Rustic Mid size Swung Vase w/Tight Crimped Edge-Blue (nice size/color)
- 850 355. **19-20" TALL FENTON RUSTIC SWUNG FUNERAL VASE - AMYTH. (RARE AND ALWAYS DESIRABLE; REALLY NICE)**
- 60 356. Fenton Orange Tree Handled Loving Cup - Mari. (nice average color and irid.; perfect)
- 90 357. Fenton Orange Tree Ruffled Punch Bowl and Base - Dk. Mari. (nice dark item; well matched)
- 50 358. Fenton Illusion 2 Handled 4 sided Bon Bon - Mari. (scarce pattern)
- 45 359. Fenton Strawberry 2 Handled 4 sided Bon Bon - Amber (nice; scarce base color)
- 385 360. **FENTON WREATH OF ROSES FLARED PUNCH BOWL AND BASE WITH VINTAGE INT. - BLUE (RARE; VERY ATTRACTIVE; HAS BRIGHT MULTI-COLORED IRID.)**
- 35 x 4 361. (4) Fenton Blackberry Block Tumblers - Amyth. (nice examples; selling so much each)
- 10 x 2 362. (2) Fenton Blackberry Block Tumblers - Mari. (selling so much each)
- 225 363. **FENTON PANELED DANDELION 6 PC. WATER SET - AMYTH. (RARE AND DESIRABLE SET; WELL MATCHED)**
- 20 364. 9" Fenton Butterfly and Berry Swung Vase - Blue (nice example)
- 400 365. **FENTON STRETCH COVERED WATER PITCHER WITH (4) HANDLED MUGS - VASELINE (VERY DESIRABLE SET; ALL IN GOOD SHAPE COMPLETE WITH COBALT HANDLES)**
- 110 366. Fenton Stag and Holly Lg. 8 Ruffled ftd. Bowl - Blue (very scarce; desirable; satiny finish)
- 40 367. Fenton Stag and Holly Lg. 8 Ruffled ftd. Bowl - Mari. (really nice example)
- 26 368. Fenton Stag and Holly ftd. Giant Rose Bowl - Mari. (another very scarce; nice irid.)
- 180 369. Fenton Bouquet 7 pc. Bulbous Water Set - Dk. Mari. (a beauty of a set)
- 110, 120 370. **(2) FENTON LILY OF THE VALLEY TUMBLERS - (1) BLUE, (1) MARI. (SELLING CHOICE; RARE WITH AVERAGE IRID.)**
- 22 1/2 x 4 371. (4) Fenton Butterfly and Fern Tumblers with Manuf. Ground Base - Amyth., Blue, Green, Mari. (selling so much each)
- 10 x 4 372. (4) Misc. Fenton Tumblers - Lattice and Grape, Butterfly and Berry, Scale Band, Plain Interior Optic - Mari. (selling so much each)
- 80 7 30 373. Fenton Butterfly and Berry Tumbler - Green; Fenton Floral and Grape Tumbler - Amyth. (2 really strong items; great color and irid.)
- 110 x 2 374. (2) Fenton Fentonia Tumblers - (1) Blue, (1) Mari. (great color & irid.; selling so much each)
- 45 375. Fenton Strawberry Scroll Tumbler - Mari. (rare; average irid.)
- 5 x 3 376. (3) Fenton Tumblers - Orange Tree Orchard, Leaf Tiers, Waterlily and Cattail - Mari. (Leaf Tiers is pastel; selling times the money)
- 10 x 2 377. (2) Fenton Paneled Dandelion Tumblers - (1) Green, (1) Blue (selling so much each)
- 40 378. 8 1/2 - 9" Fenton Leaf Chain 6 Ruffled Bowl - Blue (really nice example)
- 25 379. Fenton Garland ftd. Rose Bowl - Blue
- 475 380. **FENTON DRAGON AND LOTUS 8 RUFFLED BOWL - RED (RARE; IRID. IS DARK; DARK BASE COLOR; MAY HAVE MANUF. CHECK IN COLLAR BASE)**
- 160 381. Fenton Thistle ftd. Oval Banana Boat - Amyth. (very scarce and nice)
- 110 382. Fenton Mikado Lg. Stemmed 8 Ruffled Compote - Dk. Mari. (has to be one of the better examples I've seen)
- 20 27 383. **FENTON G & C SMALL SIZE FTD. FRUIT BOWL WITH PERSIAN MEDALLION INT. - GREEN (VERY SCARCE; NICE COLOR)**
- 600 384. Fenton G & C Small size ftd. Fruit Bowl with Persian Medallion int. - Mari. (nice example)
- 200 385. **FENTON PANTHER LG. 8 RUFFLED FTD. MASTER BERRY BOWL - ELEC. BLUE (A DESIRABLE ITEM WITH BRIGHT IRID.)**
- 110 386. 9 1/2" Fenton Holly Flat Plate - White (super bright blues and pinks)
- 200 387. **FENTON CHRYSANTHEMUM LG. 8 RUFFLED FTD. BOWL-MARI./VASELINE (RARE & DESIRABLE BASE COLOR; REALLY NICE)**
- 60 388. 7 1/2 Fenton Lions 6 Ruffled Bowl - Mari. (scarce; nice color, irid., and detail)
- 20 389. 8 1/2 - 9" Fenton Blackberry Bramble Bowl with 3 in 1 Edge - Green (really nice item)
- 80 390. **FENTON BUTTERFLY AND BERRY COVERED BUTTER DISH - BLUE (TOUGH BUTTER DISH TO FIND; WELL MATCHED)**
- 115 391. 9 1/2" Fenton Little Fishes Lg. 3 ftd. Flared Bowl - Blue (scarce pattern; sorta silvery)
- 45 392. 8 1/2" Fenton Holly Bowl with a 3 in 1 edge - Blue (satiny finish)
- 30 393. Fenton Birds and Cherries 4 sided 2 Handled Bon Bon - Green (really nice item)
- 35 394. 9" Fenton Rustic Standard Swung Vase - White (frosty and nice)
- 35 395. 9" Fenton Knotted Beads Swung Vase with Tight Crimped Edge - Blue (really nice item; attractive)
- 20 396. 8 1/2" Fenton Hearts and Vine 6 Ruffled Bowl - Mari (nice color)
- 30 397. Lot (3) Newer Pieces - Fenton B & B Tumbler - Purp.; I.G. Robin Mug - Red, Fenton Diamond Rib Vase - Purp. (selling for 1 money)

DONALD DORAIS  
150 HIGHLAND AVENUE  
CUMBERLAND, RI 02864

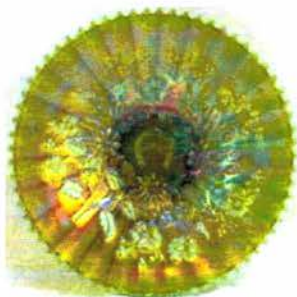
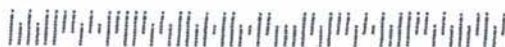


Visit  
[www.necga.com](http://www.necga.com)  
Click on  
Carnival Glass  
Links Page for  
pictures and  
brochure

Lee Markley  
Box 306  
Mentone, IN 46539



**BURNS**  
AUCTION SERVICE



**CARNIVAL GLASS AUCTION SATURDAY, MARCH 26<sup>TH</sup> AT 10:30 A.M.**