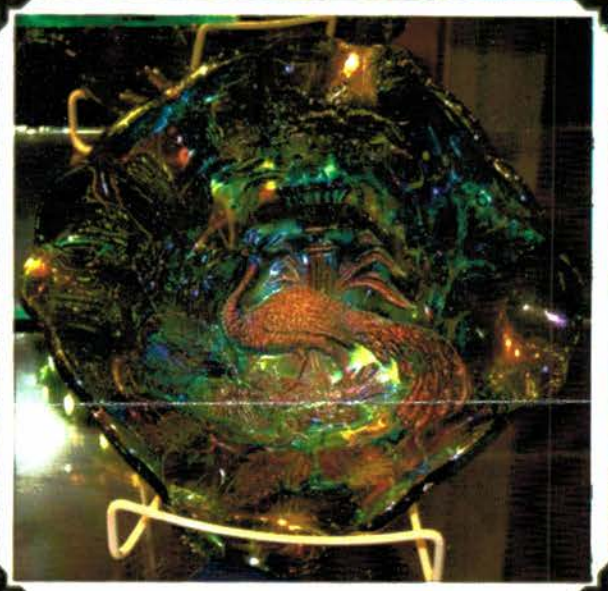
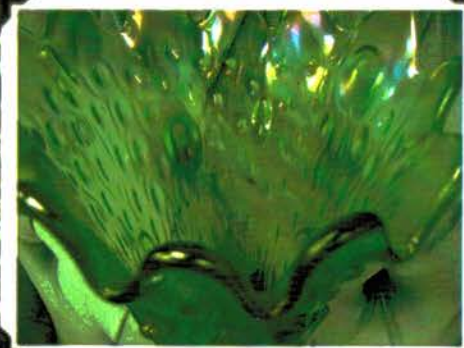


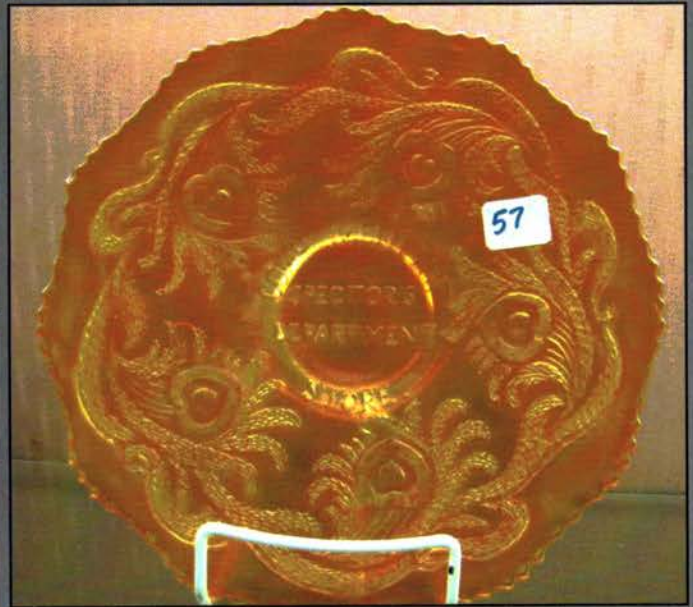
Carnival Glass Auction at Chautauqua Lake March 19th 10:00am



To view HUNDREDS of pictures & complete listing go to www.jimwrodaauction.com



Carnival Glass Auction at Chautauqua Lake March 19th 10:00am



To view HUNDREDS of pictures & complete listing go to www.jimwrodauction.com



Jim Wroda Auction Service

March 19, 2011 Carnival Glass Listing-Chautauqua

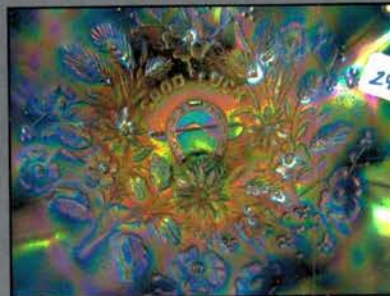
1	West. 8" purple Concave Flute vase	47	RARE Dugan 11" Ice Blue Basketweave Vase Nice color!
2	Nwood elec purple G&C banana boat- HOT!	48	THE BEST Fenton 9" HOT mari Orange Tree plate BUY IT!!!!
3	Imp 8" Smoke Morning Glory vase	49	Mburg mari Hobnail swirl rosebowl
4	Imp 12" mari Beaded Bulls eye vase	50	Fenton 7" mari Horse Medallion ft'd bowl
5	Imp 6" mari Etched Balloons vase	50a	RARE Mburg 10" Emerald Green Peacock at Urn DIAMOND SHAPE bowl. this is OFF THE CHARTS BEAUTIFUL! An Impressive piece of Millersburg glass!
6	Imp 6" smoke Etched Balloons vase		
7	Imp 13" mari Morning Glory funeral vase. Great shape!	51	Fenton pumpkin mari 5" Panther bowl
8	Imp 12' mari Beaded Bulls eye vase	52	Super Dugan 9" elec purple Cherries ruffled bowl
9	RED Mae West candle stick	53	Art glass shade
10	Fenton 5" purple Little Fishes ft'd bowl	54	Fenton 7" Amber? G&C ft'd ICS bowl. neat
11	Dugan PO Fishnet Epergne	55	Nwood Blue Bushel basket
12	Nwood 8" mari Drapery vase	56	Imp mari Zipper Loop lamp
13	Fenton mari G&C fruit bowl w/PM int. Nice color	57	Fenton mari Spector Dept Store plate. NICE
14	Pair Loetz handled serving pieces	58	Fenton 8" blue Dragon & Lotus bowl
15	Fenton 7" purple Diamond Rib vase	59	Fenton 9" mari Little Fishes bowl
16	Mari Stork & Rushes 3 pc Berry set	60	West 8" PO Scales ICS bowl. Scarce
17	Fenton 7" purple Paneled Diamonds & Bows vase	61	Nwood 9" mari Good Luck Stippled plate
18	Imp 8" mari Scroll Embossed bowl. File Ext	62	Fenton mari Kittens toothpick
19	Fenton blue Thistle compote	63	Fenton mari Kittens 4 side plate
20	Fenton 7" blue Pine cone plate	64	Fenton mari Kittens 4 side plate
20a	Fenton 10" RED Plume Panels vase. From Primo's Collection	65	Fenton blue Kittens cereal bowl
20B	Fenton 9" RED Rustic vase w/ CRE. From Primo's collection	66	Fenton mari Kittens cereal bowl
21	Fenton 7" mari Peacock & Dahlia plate	67	Fenton blue Kittens cereal bowl
22	Dugan 6" PO 4 flowers plate	68	Fenton mari Kittens 4 side plate
23	Fenton 5" mari Little Flowers plate	69	Fenton mari Kittens 4 side plate
24	Dugan PO 4 flowers bowl	70	Fenton blue Kittens toothpick
25	Nwood 9" elec LT amy 3 fruits plate w/PB very nice!	71	Nwood 8" elec purple G&C ruffled bowl w/PB
26	Dugan 5" PO Jeweled Heart banana boat shape bowl	72	Nwood 8.5" AO Hearts & Flowers ruffled bowl. Opal on the tips. RARE
27	Nwood 5" purple Peacock at Urn ICS bowl	73	Mburg green Nesting Swans ruffled bowl
28	Nwood 7" green Fruits & Flowers bowl	74	Nwood 9" mari G&C PCE bowl
29	Nwood 6" purple Peacock at Urn ICS bowl	75	Dugan 8" PO Raindrops 10 ruffled bowl
30	Nwood mari Fruits & Flowers stippled bowl	76	Dugan mari Circle Scroll hat
31	Dugan 6" PO 4 Flowers plate	77	Dugan PO Starfish compote. Great color
32	Fenton 7" blue Pine cone plate	78	Dugan white Question MArks Compote. Scarce
33	Nwood 9" blue Drapery Vari vase	79	Dugan Lt amy Question MArks compote
34	Mburg 9" Dark mari Whirling leaves bowl	80	Dugan PO Question MArks compote
35	Nwood purple G&C powder jar	81	Dugan mari Butterfly & Tulip bowl, Neat shape.
36	Nwood 9" mari Good Luck PCE bowl. Sharp!	82	WOW! Nwood 8" elec Lav G&C ruffled bowl. HOT
37	Nwood purple G&C hatpin Holder	83	Imp smoke PAnsy Sugar bowl
38	Nwood mari G&C hatpin holder	84	Mburg 10" green Blackberry Wreath 3/1 edge bowl
39	Mburg 7" hanging Cherries ICS bowl	85	Imp. 8" elect. purple Pansy ruffled bowl
40	Fenton Orange Tree mari powder jar	86	Nwood purple G & C spooner. Nice!
41	Fenton blue Heart & Vine bowl.	87	Imp Grape purple water pitcher. Flake on 1 grape
42	Set of 5 irid hand Painted art glass shades	88	Nwood persian blue Stretch 6" nut bowl
43	Nwood 10" mari G&C ruffled bowl	89	Tangerine Stretch 10" bowl
44	Nwood 10" purple G&C ruffled bowl	90	Tangerine Stretch 10" bowl
45	Nwood 10" Lt amy G&C ruffled bowl	91	Fenton 10" blue Chrysanthemum bowl
46	Imp 10" elec purple Grape ruffled bowl. WOW!		

- 92 Fenton 9" mari. Panther footed bowl
- 93 Nwood elec. blue Leaf & Beads rosebowl. HOT!
- 94 Six Plums hatpin
- 95 Big Butterfly hatpin
- 96 Fenton 5" rev. amberina Open Edge hat
- 97 Elec. Blue Singing Birds mug
- 98 Green Singing Birds mug
- 99 Fenton 5" violet blue square Open Edge hat
- 100 EXCEEDINGLY RARE NWOOD 18 1/2" ICE GREEN TREE TRUNK FUNERAL VASE. SUPER SATIN MULTICOLOR IRID. FROM TOP TO BOTTOM. HAS TO BE ONE OF THE TOP 3 NWOOD VASES EVER MADE. THIS IS THE ONLY CHANCE IN OVER 50 YRS. TO BUY ONE AT PUBLIC AUCTION. THIS VASE CAME RIGHT OUT OF A HOUSE IN LONG ISLAND NEW YORK. IT HAS BEEN IN THE SAME SPOT FOR THE LAST 65 YEARS! IT IS BEAUTIFUL!
- 101 Dragonfly hatpin
- 102 Morley Beetle hatpin
- 103 Elec. purple Open Rose spooner. Nice!
- 104 Mburg 8" rad. green Trout & Fly ICS bowl
- 105 Mburg 8" lavender Trout & Fly 3/1 edge bowl
- 106 Mburg 8" mari. Trout & Fly ruffled bowl
- 107 Mburg 8" light amy. Trout & Fly 3/1 edge bowl
- 108 Mburg 8" mari. Trout & Fly ICS bowl
- 109 Nwood mari G & C hatpin holder. Lots of blue!
- 110 Nwood 8" green Wishbone ftd. bowl
- 111 Fenton 9" green Holly 8 ruffled bowl
- 112 Nwood 8" purple Embroidered Mums bowl. Nice!
- 113 Fenton 7" pink flared Horse Medallion JIP bowl. Rare color.
- 114 Fenton 8" pinkish-amber Dragon & Lotus ruffled bowl. Very odd color.
- 115 Fenton 8" purple Peacock & Grape ftd bowl
- 116 Nwood 8" blue G & C stippled PCE bowl
- 117 Nwood green G & C hatpin holder
- 118 Nwood 9" purple Stippled Rays PCE bowl
- 119 Mburg purple Hobnail Swirl rosebowl
- 120 Fenton 6" blue Pine cone plate
- 121 Fenton 8" smoke Holly 3/1 bowl
- 122 Dugan 6" elec. purple Bells & Beads CRE bowl
- 123 Imp. 5" elec. purple Scroll Embossed bowl with File ext.
- 124 Fenton 9" blue Dragon & Lotus ruffled bowl
- 125 Fenton 9" blue Dragon & Lotus ICS bowl
- 126 Australian 9" black amy. King Fisher bowl
- 127 Imp. 5" elec purple Embossed Scroll bowl with File ext.
- 128 Fenton 6" green Horse Medallion ruffled bowl
- 129 Fenton 7" mari. Horse Medallion plate
- 130 Fenton 9" mari. Dragon & Lotus ruffled bowl
- 131 Mburg purple Hobnail rosebowl. Nice!
- 132 Fenton dark mari. Persian Medallion hair receiver
- 133 Mburg mari. Hanging Cherries spooner
- 134 Imp. elec. purple Open Rose spooner
- 135 Nwood green Fine Cut & Roses rosebowl
- 136 Nwood 9" mari. G & C plate
- 137 Mburg 9" purple Whirling Leaves bowl
- 138 Nwood dark mari. G & C plate
- 139 Fenton 9" mari. Holly plate
- 140 Imp. 9" mari. Scroll Embossed plate
- 141 pair celeste blue Stretch candlesticks
- 142 Dugan mari. Vinyard water pitcher
- 143 Fenton dark mari. Orange Tree fruit bowl
- 144 Nwood purple G & C large fruit bowl
- 145 West. PO Corinth vase
- 146 Fenton royal blue 5" Open Edge JIP hat
- 147 Fenton 8" purple Diamond Rib vase
- 148 mari. 9" Vintage ruffled bowl
- 149 Nwood elec. blue Grape & Gothic Arches master berry bowl. Beautiful.
- 150 Fenton 8" lime green Peacock & Grape ruffled bowl
- 151 Fenton elec. blue Orange Tree hatpin holder. Couple tiny pin points on feet. Color more than makes up for that!!!!
- 152 Imp. elec. purple 10" Heavy Grape chop plate
- 153 Imp. 9" elec purple Scroll Embossed plate
- 154 Nwood purple Leaf & Beads rosebowl
- 155 Fenton green Peacock Tail compote
- 156 Imp. 7" elec. purple Scroll Embossed bowl w/Tassell Ext.
- 157 Dugan 8" PO Spiralex vase
- 158 Dugan mari. Brooklyn Bridge 10-ruff. bowl
- 159 Fenton 8" green Peacock Tail square CRE bowl
- 160 Nwood 8" purple G & C spatula ftd. bowl
- 161 Imp. 8" amber Open Rose bowl
- 162 Imp. 8" elec. purple Shell & Sand ruffled bowl. Nice color.
- 163 Mburg 8" radium purple Holly Sprig CRE bowl
- 164 Fenton blue Holly compote
- 165 Dugan 9" mari. Lattice & Points vase
- 166 (3) asstd Carnival beaded items
- 167 Dugan 8" mari. Pony bowl
- 168 Nwood mari. Heart & Flowers compote. Very Nice!!!!
- 169 Dugan 7" PO Stippled Flower tri-corner bowl
- 170 Fenton 5" red Open Edge hat. Cracked
- 171 Nwood 10" mari. G & C banded & stippled dresser tray
- 172 Fenton mari. Iris compote
- 173 Nwood 9" mari. Three Fruits stippled bowl
- 174 Fenton 8 1/2" mari. Leaf Chain ICS bowl
- 175 Set of 4 Art Glass shades
- 176 Imp. smoke Balloons cylinder vase
- 177 West. amber Louisa ftd plate. Rare color.
- 178 West. PO Louisa ftd plate. Rare color.
- 179 pink & ice green Brocaided Palms 7" mint trays
- 180 Imp. elec purple Grape tumbler
- 181 Set of 4-6" PO Four Flowers plates. One money
- 182 Nwood 8" purple Fruits & Flowers dome ftd. bowl
- 183 Nwood 8" purple Sunflower ftd. bowl
- 184 Dugan 8" PO Stippled Petals flared nut bowl
- 185 Red Stretch 8" Wide Panel bowl

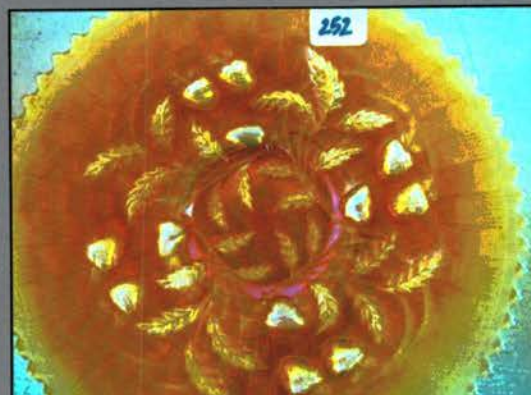
- 186 Nwood SMOKE G & C stippled punch base. Blasting pastel irid. If I had the top, I'd want \$30,000!!!
- 187 Fenton red 7" G & C bowl
- 188 Fenton 9" blue Fine Rib vase
- 189 Fenton 20" white Rustic funeral vase. Beautiful pastel top to bottom.
- 190 Nwood purple Diamond Points 11" vase
- 191 vaseline Soda Gold spittoon
- 192 (3) figural mari. powder jars
- 193 Frosted Block mari. 8" plate
- 194 mari. Windmill & Star Medallion milk pitchers
- 195 Hobstar & Flower mari. compote
- 196 Fenton 6" mari. Pine cone plate
- 197 white hammered bell lamp shade
- 198 Nwood ice blue Grape Arbor water set. Great color.
- 199 Nwood white Grape Arbor tankard & tumbler
- 200 Nwood ice green Grape Arbor tumbler. Tiny flake on base
- 201 Mburg Feather & Heart mari. tumbler. Pin flake on rim
- 202 Nwood purple G & C 8 pc. standard punch set. Very nice color.
- 203 Dugan mari. Many Fruits 8 pc. punch set
- 204 Imp. Whirling Star mari. punch bowl & base
- 205 Rare-Fenton white Orange Tree 8 pc. punch set. Very Frosty
- 206 Fenton mari. Forget Me Not 7 pc. water set. Very dark.
- 207 Nwood white 8-sided Bushel Basket
- 208 Nwood white round Bushel Basket
- 209 Imp. 10" mari. Ripple vase & small mari. bowl
- 210 Nwood white Dandelion tumbler
- 211 Nwood elec. blue Peacock at Fountain tumbler
- 212 Fenton red Orange Tree mug. Scarce
- 213 Dugan 7" elec. purple Nautilus vase. Tiny flake on base
- 214 Nwood 8" blue Rose Show bowl. Couple flakes on roses.
- 215 Imp. 8" purple Shell & Sand deep round bowl
- 216 Nwood light pastel mari. Good Luck ruffled bowl.
- 217 Fenton 8" blue Autumn Acorn ICS bowl
- 218 Nwood purple Leaf & Beads rosebowl
- 219 2-Stretch glass sherbets
- 220 celeste blue Stretch covered compote
- 221 2-Stretch glass chambersticks.
- 222 persian blue Stretch 8" rosebowl
- 223 Art Glass large single lily epergne in ormalu mount.
- 224 Fenton blue Strawberry Scroll tumbler
- 225 Nwood elec. purple Raspberry tumbler
- 226 Fenton blue Strawberry Scroll tumbler
- 227 Grape Arbor dark mari. tumbler
- 228 Nwood blue 8-sided Bushel Basket
- 229 Nwood green Fruits & Flowers dome ftd bowl. Chip on base
- 230 Fenton mari. G & C spatula ftd. bowl
- 231 Fenton mari. Stag & Holly spatula ftd. bowl
- 232 Mburg 6" green Cosmos bowl
- 233 Cambridge 9" purple Inverted Strawberry rosebowl
- 234 Nwood 10" purple Peacock at Urn chop plate.
- 235 Nwood bright mari. Peacock at Fountain butter dish
- 236 Nwood 9" green Greek Key plate. Tiny flake in pattern
- 237 Mburg 9" radium purple Many Stars bowl Flake on edge
- 238 Nwood custard Peacock at Urn master ICS bowl
- 239 Nwood dark mari. Peacocks ruffled bowl
- 240 Nwood 8 1/2" blue Good Luck stippled ruffled bowl. Nice!
- 241 Nwood purple G & C centerpiece bowl Points up
- 242 Imp. elec. purple Diamond & Sunburst wine bottle.
- 243 mari. Berry Band & Rib 8 pc. wine set
- 244 Dugan 10" PO Pulled Loops vase
- 245 Nwood dark mari. Grape Arbor tankard
- 246 Nwood white Grape Arbor 7 pc. water set. Very nice!
- 247 Dugan white 5" painted Wreathed Cherry sauce
- 248 Dugan 10" PO Ski Star bowl
- 249 Fenton mari. Mikado compote
- 250 Nwood purple Bushel Basket
- 251 Nwood purple Double Loop open sugar. Rare color!
- 252 Nwood 9" dark mari. Strawberry plate
- 253 Nwood 9" purple Peacocks plate
- 254 Fenton mari. Blueberry 7 pc. water set. Scarce!
- 255 Nwood 9" mari. Nippon plate
- 256 Nwood 9" radium mari. G & C plate
- 257 PO Honeycomb rosebowl
- 258 blue miniature Blackberry cupped compote
- 259 Dugan purple Wreathed Cherry spooner, sugar (no lid) & butter base
- 260 Nwood 9" white Wishbone PCE bowl. Scarce
- 261 Dugan purple Wreathed Cherry water pitcher. Scarce.
- 262 Nwood elec. green Tree Trunk 10" vase. Tiny flake on base. Beautiful color
- 263 Imp. purple Open Rose plate. Couple flakes on roses. Nice color!
- 264 Nwood 9" purple Good Luck stippled plate. Very RARE plate! and nice
- 265 Dugan purple Strawberry Epergne. Scarce
- 266 Nwood 9" elec blue G&C stippled PCE bowl. HOT!
- 267 Nwood 9" purple 3 Fruits plate w/ PB. Nice
- 268 Nwood 9" purple Peacocks plate w/ elec highlights. Nice
- 269 Nwood 9" dark MARI Peacocks plate. Real sharp!
- 270 Nwood purple Town P {ump. Scarce & Nice
- 271 Nwood 9" blue Good Luck bowl.
- 272 Nwood 6.5" IB Thin Rib squatty vase. Scarce
- 273 Nwood 12" white Leaf Columns vase.
- 274 2 green Singing Birds tumblers. 1 money
- 275 European 17" mari single Lily epergne.
- 276 Mburg 9" mari square Strawberry Wreath bowl w/ blue irid ! HOT!
- 277 Mburg 9" rad purple square STRawberry Wreath bowl Another Beauty!
- 278 Mburg rad mari Big Fish ruffled bowl. Great color!
- 279 Mburg Hobnail swirl purple spittoon. Scarce
- 280 Fenton vaseline Orange Tree mug
- 281 Fenton 8" GREEN Peter Rabbit bowl. GREAT color has a tiny manufacturing sharp edge. NOT DAMAGE!

- 282 Set of 6 elec purple Feild Flower tumblers. 1 money
- 283 2 blue 5" Panther bowls
- 284 Green Butterfly & Berry 5" bowl
- 285 Green Waterlily 5" bowl. Scarce
- 286 Dugan PO Swan. RARE
- 287 2 5" mari Cherry & Cable berry bowls
- 288 Imp 9" Mari Pansy bowl
- 289 Nwood 9" mari Stippled rays bowl. Nice
- 290 Imp 9" green Grape bowl
- 291 Fenton dark mari Orange Tree 8 ruffled bowl
- 292 Fenton 8" white Leaf Chain bowl. FROSTY
- 293 Fenton purple 2 flowers 9" bowl
- 294 Nwood 9" mari Wild Strawberry ruffled bowl
- 295 Irid custard Grape & Gothic Arches 7 pc berry set
- 296 Dugan PO Six Petals tri-corner bowl
- 297 Fenton 12" purple April Showers vase
- 298 Fenton mari Butterfly & Berry master berry bowl. This thing is Gorgeous!
- 299 Nwood white Heart & Flowers ruffled bowl
- 300 Nwood IG & em green G&C punch cups
- 301 Nwood purple 3 Fruits ft'd bowl. Nice elec color
- 302 Nwood elec purple Fruits & Flowers compote
- 303 Nwood mari Fruits & Flowers compote
- 304 Nwood em green Fruits & Flowers compote
- 305 Dugan 7" elec purple Fishscale & Beads plate w/ Pease MN adv.
- 306 Dugan 10" elec purple Persian GARDen ICS bowl WOW
- 307 Nwood purple G&C candle lamp w/ shade
- 308 Mburg mari Strawberry compote with RARE CRE. Radium
- 309 Imp 8" elec purple Ripple vase
- 310 Fenton 11" RED fine Rib vase
- 311 Nwood 8' mari 3 Fruits ft'd bowl.
- 312 Fenton 9" mari Coral ruffled bowl
- 313 Nwood IB Drapery vase.
- 314 Dugan 8" white Lattice & Points vase. NCIE
- 315 Fenton mari Orange Tree complete table set
- 316 Mburg rad purple Holly Nappy
- 317 Nwood mari G&C stippled humidor.
- 318 Nwood blue G&C stippled ruffled bowl
- 319 Nwood IG Memphis punch base. Chip
- 320 Fostoria IB Brocaided Acorn card tray
- 321 MAri Zipper Loop lamp- large size
- 322 Dugan 4" white Lattice & Points hat vase
- 323 Nwood 6" G&C HG plate
- 324 Green Buzz Star small cruet
- 325 RARE Imperial elec purple Broken Arches RUFFLED punch bowl & base. VERY RARE! Only a few of these known. Has small flake on edge of a point.
- 1001 6 mari Milady tumblers
- 1002 6 blue Milady tumblers
- 1003 mari Quill tumbler
- 1004 Elec purple 474 tumbler
- 1005 purple Beaded Shell tumbler
- 1006 lavender G&C tumbler
- 1007 Mari White oak tumbler
- 1008 blue Orange tree tumbler
- 1009 white Floral & Grape tumbler
- 1010 mari Palm Beach tumbler
- 1011 mari Grape Vine & Lattice tumbler
- 1012 Purple Windmill tumbler
- 1013 mari Apple tree tumbler
- 1014 Blue Orange Tree Orchard tumbler
- 1015 elec blue Peach tumbler
- 1016 green Inverted Strawberry tumbler
- 1017 blue Daisy & Lattice tumbler
- 1018 green Buzz Star tumbler
- 1019 blue Apple Tree tumbler
- 1020 mari inverted Strawberry tumbler
- 1021 mari Windmill tumbler
- 1022 smokey lav. Dandelion tumbler
- 1023 mari Greek Key tumbler
- 1024 blue Rambler Rose tumbler
- 1025 mari Rambler Rose tumbler
- 1026 mari Orange Tree tumbler
- 1027 Palm beach tumbler
- 1028 purple Checker Board tumbler
- 1029 Mari Checker Board tumbler
- 1030 Vaseline Concave Diamond Tumbler
- 1031 Celeste Concave Diamond Tumbler
- 1032 White Lattice & Grape tumbler
- 1033 blue Fentonia tumbler
- 1034 mari Lattice & Daisy tumbler
- 1035 mari WIG WAM tumbler- RARE ✓ 150
- 1036 blue Lattice & Grape tumbler
- 1037 purple concave diamond tumbler ?
- 1038 RARE Blue Grapevine & Lattice tumbler
- 1039 mari Rising Sun tumbler
- 1040 MAri Britt tumbler- RARE
- 1041 blue Milady tumbler
- 1042 clambroth/lt mari Long Buttress or Portland tumbler
- 1043 elec purple Diamond LAcE tumbler
- 1044 mari Cut Cosmos tumbler
- 1045 MAri Charm & Star? tumbler
- 1046 Mari Western Thistle tumbler
- 1047 mari Fans tumbler
- 1048 mari Aztec tumbler
- 1049 mari Fleur-de-lis tumbler
- 1050 Fenton blue Waterlily tumbler- RARE has Nettie Pitzer etching
- 1994-260
- 290-1996
- 150-1998
- 250-300

Carnival Glass Auction at Chautauqua Lake March 19th 10:00am



Jim Wroda Auction Services, LTD
www.jimwrodaauctions.com



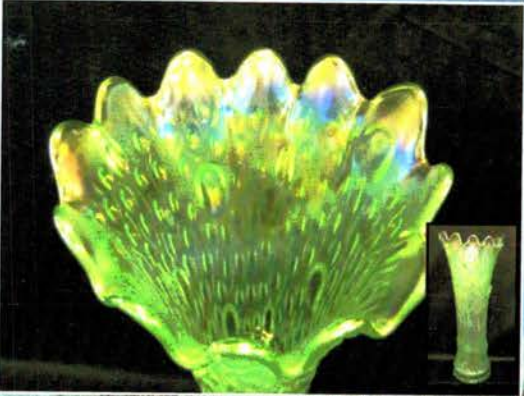
To view HUNDREDS of pictures & complete listing go to www.jimwrodaauction.com



Jim Wroda Auction Services, LTD

Chautauqua Lake Auction Center
2118 Magnolia Ave
Ashville, NY 14710
716.526.4230 office@jimwrodaauction.com

PRESORTED
FIRST CLASS MAIL
U.S. POSTAGE
PAID
CELINA, OH
PERMIT NO. 99



FIRST CLASS POSTAGE PAID

7-12*****AUTO**~~MIXED~~
LEE MARKLEY
PO BOX 306
502 N BROADWAY ST
MENTONE IN 46539-9531

Volume 3, Series 2011

Carnival Glass Auction at Chautauqua Lake Auction Center

2118 Magnolia Ave. Ashville, NY 14710

Saturday, March 19th 2011 at 10:00am
With an EARLY BIRD TUMBLER auction at 9:00 am!

*****Mail, E-Mail, Phone and Absentee Bids Policy:*****

Absentee bids are welcome. All items are sold AS IS.. If damage is found during the auction or preview we will cancel your bid. If manufacture problems bother you such as air bubbles, pulled points, soda ash, tool marks, or any other manufacturing flaw, please be specific in your mail bids or email bids. If there is a manufacture flaw on an item that we feel is truly distracting, we have noted that in the listing already. Auction Company has the right NOT to execute an absentee bid for any reason. ALL bids are due 2 days prior to the auction. ALL items must be paid for within 7 business days after notification.

LEASE NOTE: Laurie will get your items to you as fast as possible but, please allow 10 to 14 days for your items to be shipped.

To view more pictures & listing please visit our website www.jimwrodaauction.com

Terms & Conditions: Cash, Travelers checks, business or personal checks w/I.D. Visa/ MC & Discover w/a 3% clerking fee

Jim Wroda Auction Services, LTD

Jim Wroda - Owner / Auctioneer

Your full service Auction Company since 1997
Here too help you with your auction needs! No auction too big or too small.
Let On-Site auctions as well as Gallery Auctions.
Auction! Booking NOW for our Fall schedule.



277-548-1010