

Southern California Carnival Glass Club's Convention Auction

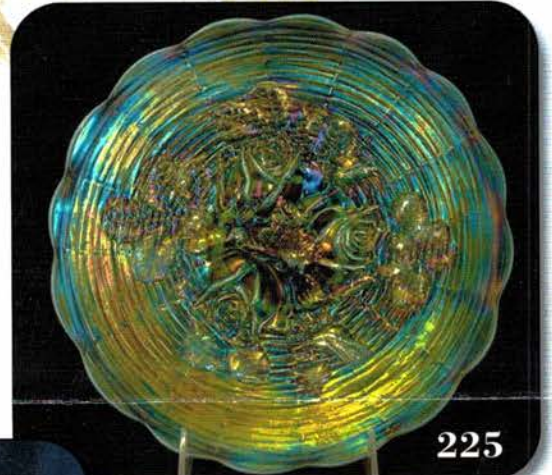
Saturday, March 5, 2011 -- 9:30 A.M.

Ayres Country Suites Hotel

1945 E. Holt Blvd.

Ontario, California 91764

Call (909)390-7778 for reservations



JIM & JAN SEECK

Seeck Auctions

641-424-1116

SATURDAY, MARCH 5, 2011 - 9:30 A.M.



Ayres Country Suites Hotel -- Ontario, California

NO BUYER'S PREMIUM

OPEN TO THE PUBLIC



The complete catalog with pictures is online at: www.seeckauction.com

Also, please email us and we will put you on our email mailing list for auction notices.

This year's Southern California Convention Auction features the Carnival Glass collection of the late Gail Westphall. Gail passed away recently and was hoping to be at the convention to watch her glass sell. Gail has been a part of Carnival Glass for a long time. I met Gail early on in my Carnival Glass history and she was one of those "First Few" that made an impression on me. Her glass is beautiful to say the least. She would have been pleased to see others enjoy her glass as much as she did. We've added additional pieces to round out the auction.

If staying at the Hotel, call direct for room reservations: 909-390-7778. Cutoff date for reservations is Feb 16th, 2011. San Diego / Southern Calif. Convention info: Contact President Judy Maxwell at 909-794-4843.

Terms: Cash or Check, VISA and MasterCard accepted w/proper ID. 4% Clerking Fee on all purchases except for payment of cash or check. Announcements made day of sale take precedence over any printed information.

**** Sales Tax will be charged, please bring your tax-exempt numbers.**

We have 3 options for absentee bidding:

1) If you **DO NOT** have internet access or access to our website, you can: Call us by phone to enter your bids at (641) 424-1116 OR By sending the numbers of the item(s) desired and the amount bid on each to: Seeck Auctions, PO Box 377, Mason City, Iowa 50402. (The mail has not been very dependable. We would prefer you call us with your bids rather than send them in a letter.)

- All written and called in bids will be entered into the online catalog by us.
- Have all bids in by **Wed., March 2nd.**

2) Enter your bids from our website into our online catalog through the Auctionflex system.

When you get to the online catalog, you will need to login as a bidder. For the first time you will need to **set up your account** by creating a username and password. This will include filling out a form with your name, address, etc. You will also need to **register for the auction** which will ask you to enter a valid credit card number. This card will be validated by a \$1 charge to your card. This will only happen once and you will now be able to enter bids through our online catalog by just logging in with your user name and password. You will use this user name and password for all our auctions. You are not required to pay by credit card if you are successful. This is just a safeguard for us if someone does not pay. We will let you know what you owe us through an email and you can decide how you would like to pay us.

An exciting advantage of entering your bids online yourself, is the option to be notified by email if you are outbid on an item. You will know when you are outbid on an item and you can increase your bid on that item or bid on something else. **There will be a cutoff date and time for entering your bids online.** After this time has passed, you will not be able to enter your bids from our online catalog.

• Remember, that just because you are the high bidder in the online catalog, this does not mean you have won the item. Your bid will still need to beat the floor bidders and live phone bidders. This system will run our absentee bids just as we did before. You will still be able to buy the item lower than your online bid unless someone on the floor bids you higher.

3) Live phone bidding is available on pieces with an estimated sale price of \$500 or more. If you would like to participate in live phone bidding, contact us by **the Tuesday before the auction (March 1st)**. We will need to know the lot# and the phone number that you can be reached at on the day of the auction. We will also need your home phone number if different than the above number. Please call with questions: 641-424-1116.

There is a \$7 handling charge for each successful bid. Shipping and insurance charges are additional. Bidders will be notified by phone/email if their bid(s) are successful. This will be done 1 - 3 days after the auction. *** If you do not receive an item that sold for less than your bid, assume we cancelled your bid because the item had a severe manufacture problem, damage or was not listed correctly.

BID INCREMENTS: \$1 - \$100/\$5 \$100 - \$200/\$10 \$200 - \$700/\$25 \$700 - \$1,500/\$50
\$1,500 - \$3,000/\$100 \$3,000+ Auctioneer's Discretion

- ___ 1. Flute toothpick - lime green w/swirl effect - polished on top edge
- ___ 2. Flute toothpick - green
- ___ 3. Flute toothpick - marigold
- ___ 4. Big Basketweave hldd basket - marigold
- ___ 5. Grape & Cable hatpin holder – green - pinpoint on toe
- ___ 6. Grape & Cable hatpin holder - purple
- ___ 7. Little Beads mini compote – aqua - scarce color
- ___ 8. **Hearts & Flowers ruffled compote – green - minor nick on base but rare!**
- ___ 9. Grape Delight nut bowl - purple
- ___ 10. Poinsettia & Lattice ftd ruffled bowl – horehound - very rare & pretty, not many around
- ___ 11. Poinsettia & Lattice ftd ruffled bowl – blue - rare color, nice
- ___ 12. Poinsettia & Lattice ftd ruffled bowl – marigold - dark & beautiful
- ___ 13. M'burg Grape Wreath Variant 8" ruffled bowl - amethyst - radium, pretty
- ___ 14. Captive Rose 9" plate – amethyst - super pretty & rare color
- ___ 15. Captive Rose 9" plate – green - fabulous irid. on a rare plate
- ___ 16. Captive Rose 9" plate – blue - very pretty for these
- ___ 17. Captive Rose 9" plate – marigold - dark & pretty, lots of pinks
- ___ 18. Persian Medallion 6" plate - blue - pretty
- ___ 19. Persian Medallion 6" plate - marigold
- ___ 20. **Imperial Grape 9" plate – purple - super, super example, fabulous for this rare plate**
- ___ 21. Double Stemmed Rose dome ftd ruffled bowl - peach opal
- ___ 22. Wishbone 10" PCE bowl w/BW back – green - minor mold roughness on base, nice
- ___ 23. Wishbone 10" PCE bowl w/BW back – purple - super example, a real beauty
- ___ 24. Fenton's Grape & Cable spt ftd 9" plate – amethyst - buffed point
- ___ 25. **Grape & Cable mid-size 8 pc. punch set – white - frosty w/super irid., rare & fantastic!**
- ___ 26. Persian Garden ruffled sauce - peach opal - nice
- ___ 27. **Heavy Grape chop plate – purple - super pretty, minor rubbing on grapes**
- ___ 28. Heavy Grape 8" plate - purple - super
- ___ 29. Big Basketweave 2 hldd basket – marigold - dark & super
- ___ 30. **Round Up 9" plate - purple – fantastic, a beautiful plate**
- ___ 31. Round Up 9" plate - white - super pretty
- ___ 32. **Flowers & Frames dome ftd ruffled bowl – purple - beautiful irid.**
- ___ 33. Flowers & Frames dome ftd ruffled bowl - peach opal - nice
- ___ 34. Two Flowers 10" ftd IC shaped bowl - pastel marigold - super, super
- ___ 35. **Hearts & Flowers 9" plate w/ribbed back – purple - super pretty w/even, multi-colored irid., just fabulous**
- ___ 36. **Hearts & Flowers 9" plate w/ribbed back – marigold - scare, pretty**
- ___ 37. Imperial Grape ruffled bowl - purple - super
- ___ 38. Imperial Grape ruffled bowl - pastel marigold - lots of pink, yellow & green, pretty
- ___ 39. Fisherman's mug - purple
- ___ 40. **Fieldflower water pitcher – purple - a beauty, scarce**
- ___ 41. Fieldflower tumbler – purple - pretty
- ___ 42. Three Fruits 9" plate w/plain back – purple - very pretty
- ___ 43. Three Fruits 9" plate w/plain back – marigold - super dark & nice
- ___ 44. Captive Rose 3 in 1 edge bowl - amethyst
- ___ 45. **Stippled Strawberry 9" plate w/BW back – green - extremely rare & nice**
- ___ 46. **Stippled Strawberry 9" plate w/ribbed back - marigold - beautiful for a very rare plate**
- ___ 47. Wild Rose ftd nut bowl – blue - electric, super
- ___ 48. Wild Rose ftd nut bowl - purple
- ___ 49. Wild Rose ftd nut bowl - green
- ___ 50. **M'burg Bernheimer Brothers Many Stars ruffled bowl - blue - extremely rare bowl & very nice example for these**
- ___ 51. Fine Cut & Roses rose bowl - green - pinpoint on toe, plain interior, pretty
- ___ 52. Fine Cut & Roses rose bowl - purple - has Fancy interior, fantastic!
- ___ 53. Fine Cut & Roses rose bowl – marigold - couple of nicks on toes
- ___ 54. Circle Scroll ruffled hatshape – marigold - pretty
- ___ 55. **Orange Tree w/trunk 9" plate - blue - very pretty, highly desirable**
- ___ 56. Orange Tree 9" plate - marigold - also very pretty
- ___ 57. Orange Tree 9" plate - unusual shade of marigold - a really unique plate
- ___ 58. **Floral & Grape 5 pc. water set – amethyst - nice set**
- ___ 59. **Floral & Grape water pitcher - blue - super pretty**
- ___ 60. Floral & Grape water pitcher - marigold
- ___ 61. **Good Luck PCE bowl w/ribbed back - blue - electric & pretty**
- ___ 62. **Good Luck PCE bowl w/ribbed back – marigold - pumpkin**
- ___ 63. Miniature Morning Glory 6 1/2" vase – purple - super!
- ___ 64. Miniature Morning Glory 7 1/2" vase - smoke - pretty
- ___ 65. **Wishbone ftd 9" plate - marigold - scarce, nice**
- ___ 66. Wishbone ftd 9" plate - purple
- ___ 67. Holly ruffled bowl - green - pretty

- ___ 68. Holly ruffled bowl - amethyst - pretty
- ___ 69. Ski Star tri-cornered crimped edge dome ftd bowl - peach opal - super pretty
- ___ 70. **Dragon & Lotus ruffled bowl - red - highly desirable & nice**
- ___ 71. Dragon & Lotus ruffled bowl - marigold - dark & super
- ___ 72. Strawberry ruffled bowl w/plain back - green - emerald & beautiful!
- ___ 73. Strawberry ruffled bowl w/BW back - purple - pretty
- ___ 74. Stretch Glass cvd candy dish - celeste blue
- ___ 75. **Nippon PCE bowl w/ribbed back - aqua - extremely rare, highly desirable & pretty**
- ___ 76. Nippon PCE bowl w/ribbed back - ice blue - minor sliver on flat of base
- ___ 77. Lined Lattice 10" vase - marigold - dark & pretty
- ___ 78. **Double Scroll candlesticks - red - nice matching pair, hard to find**
- ___ 79. Raindrops dome ftd ruffled bowl - peach opal - minor pinpoint on base seam
- ___ 80. **Embroidered Mums ruffled bowl w/ribbed back - horehound - rare color & nice**
- ___ 81. **Embroidered Mums ruffled bowl w/ribbed back - blue - electric & super**
- ___ 82. N's Thin Rib 7" squatty vase - amethyst - very pretty, unique look
- ___ 83. **Australian Magpie master ruffled bowl - dark - super, a beauty**
- ___ 84. Australian Swan ruffled sauce - dark - super!
- ___ 85. **Fruits & Flowers 7" ruffled bowl w/BW back - ice green - very rare & highly desirable, super!**
- ___ 86. Shell & Sand deep ruffled bowl - purple - nice
- ___ 87. Shell deep ruffled bowl - smoke - super pretty
- ___ 88. Scroll Embossed deep ruffled bowl w/file back - purple - fantastic!
- ___ 89. **Four Flowers 10" ruffled bowl - purple - super pretty & scarce**
- ___ 90. **Pony ruffled bowl - ice green - very rare color, pretty**
- ___ 91. Grape & Cable bonbon - green
- ___ 92. Grape & Cable bonbon - marigold - pink, blue & yellow irid.
- ___ 93. **Garden Path Variant 10" IC shaped bowl - peach opal - rare bowl & pretty**
- ___ 94. Double Dutch ftd ruffled bowl - purple - super pretty w/great mold work, minor pinpoints on foot
- ___ 95. Windmill ruffled sauce - purple - super
- ___ 96. **Peacock & Grape 9" plate - marigold - scarce, very pretty**
- ___ 97. N's Eight Sided bushel basket - white - super nice, one cleat on inside foot has chip
- ___ 98. N's Eight Sided bushel basket - marigold - dark, nice
- ___ 99. Soutache dome ftd ruffled bowl - peach opal
- ___ 100. **Good Luck ruffled bowl w/ribbed back - sapphire - very rare, pretty, a great piece of glass**
- ___ 101. Good Luck ruffled bowl w/ribbed back - purple - super pretty, pinhead on base
- ___ 102. Good Luck ruffled bowl w/ribbed back - marigold - very pretty w/pink & yellow irid.
- ___ 103. Little Fishes ftd ruffled sauce - blue - cute, super pretty
- ___ 104. Little Fishes ftd ruffled sauce - marigold - also nice
- ___ 105. **Loganberry vase - amber - nice, scarce**
- ___ 106. Loganberry vase - green
- ___ 107. Blackberry Open Edge square shaped basket - white
- ___ 108. Blackberry Open Edge square shaped basket - blue - pretty
- ___ 109. Blackberry Open Edge square shaped basket - marigold - chip on back edge
- ___ 110. **Peacock at the Fountain master berry bowl - ice blue - super pretty irid., rare**
- ___ 111. Peacock at the Fountain berry bowls (3) - ice blue - all very pretty, all to go
- ___ 112. Strawberry 9" plate w/BW back - purple - pretty
- ___ 113. Strawberry 9" plate w/BW back - green - another pretty one
- ___ 114. Leaf Chain ruffled bowl - amethyst - silvery irid.
- ___ 115. **Fluffy Peacock water pitcher - amethyst - very pretty pitcher & scarce**
- ___ 116. Leaf Rays ruffled nappy - purple - nice
- ___ 117. **Holly 9" plate - blue - very pretty**
- ___ 118. Holly 9" plate - marigold - dark & fantastic
- ___ 119. Smooth Rays crimped edge 6" plate - peach opal - nice
- ___ 120. **Australian Thunderbird master ruffled bowl - dark, super pretty irid.**
- ___ 121. Australian Kangaroo ruffled sauce - dark, very pretty
- ___ 122. Fenton's Peacock at the Urn ruffled bowl - marigold - nice
- ___ 123. Ripple 11" vase - marigold
- ___ 124. Paneled Diamond & Bows 7 3/4" vase - blue
- ___ 125. **Stippled Three Fruits 9" plate w/ribbed back - horehound - very rare plate & pretty, not often sold**
- ___ 126. **Stippled Three Fruits 9" plate w/ribbed back - blue - super pretty w/electric irid.**
- ___ 127. Captive Rose ruffled bowl - green - very pretty
- ___ 128. Stretch Glass large 8" vase - red
- ___ 129. M'burg Blackberry Wreath 3 in 1 edge sauce - marigold - radium & nice
- ___ 130. **Stippled Grape & Cable Variant 9" plate w/BW back - purple - stippling covers entire background of plate, rare**
- ___ 131. Nautilus whimsy sugar bowl - peach opal - repair on base
- ___ 132. Nautilus whimsy - peach opal - not a sugar & not a creamer
- ___ 133. Waterlily ftd round master berry bowl - amethyst - super pretty

- ___ 134. Luster Rose 8" ftd round bowl – lavender - scarce
- ___ **135. Peacock at the Fountain fruit bowl – blue - very pretty & very scarce**
- ___ 136. Honeycomb & Beads crimped edge 6" bowl – purple - pretty
- ___ **137. S-Repeat tumbler – marigold - rare tumbler & highly desirable, nice**
- ___ **138. Tree Trunk 8" squatty vase – blue - very pretty, scarce color**
- ___ 139. Tree Trunk 6" squatty vase – purple - has ruffled top
- ___ **140. Stippled Three Fruits spt ftd ruffled bowl - aqua opal - pastel & nice**
- ___ 141. Three Fruits spt ftd ruffled bowl – purple - pretty
- ___ 142. Grape & Cable cvd sugar bowl – purple - nice example
- ___ 143. Grape & Cable creamer - purple
- ___ 144. Grape & Cable spooner - purple
- ___ **145. Ogden Furniture advertising ruffled bowl - amethyst - very pretty, nice example & tough to find**
- ___ 146. Drapery candy dish – purple - super nice
- ___ 147. Drapery candy dish - marigold - dark & super
- ___ 148. Ribbon Tie 3 in 1 edge low bowl – blue - very beautiful
- ___ 149. Petal & Fan ruffled sauce - peach opal
- ___ **150. Poppy Show 9" plate – blue - outstanding irid., has chip on flower petal**
- ___ 151. Poppy Show 9" plate – marigold - beautiful
- ___ **152. Poppy Show 9" plate – white - chip on flower petal**
- ___ 153. Poppy pickle dish – blue - electric & nice
- ___ 154. Robin mug - marigold
- ___ 155. Peacock at the Fountain tumbler – blue - club donation
- ___ 155a. Peacock at the Fountain tumbler – blue - club donation
- ___ 155b. Peacock at the Fountain tumbler – blue - club donation
- ___ 155c. Peacock at the Fountain tumbler – blue - club donation
- ___ 155d. Peacock at the Fountain tumbler – blue - club donation
- ___ **156. Fenton #232 candlesticks – wisteria - nice**
- ___ 157. Fenton #232 candlesticks - ice green - also nice
- ___ 158. Fenton #232 candlesticks - celeste blue - nice
- ___ 159. Fenton #232 candlesticks – marigold - nice
- ___ **160. M'burg Peacock 6" plate – amethyst - satin & super pretty, rare**
- ___ 161. Singing Birds mug - purple
- ___ **162. Morning Glory 19" funeral vase - marigold**
- ___ 163. Open Rose 9" plate – amber - nice
- ___ 164. Open Rose 9" plate - marigold
- ___ **165. Peacock at the Fountain water pitcher – green - extremely rare color & nice**
- ___ 166. Fenton puff jar - celeste blue - minor pinpoint on inner rim of lid
- ___ 167. Fenton puff jar - marigold
- ___ 168. Ripple 8 1/2" squatty vase – purple - has 3 3/8" base, nice
- ___ 169. Ripple 8" squatty vase – amber - has 3 3/8" base, super pretty
- ___ 170. N's Bushel Basket – aqua - minor point on knob of foot, hard to find color
- ___ 171. N's Bushel Basket – white - nice
- ___ 172. N's Bushel Basket - blue
- ___ 173. Four Seventy Four 10 pc. punch set - marigold
- ___ 174. Rose Spray JIP compote - celeste blue
- ___ **175. Raspberry milk pitcher – white - frosty & pretty, rare little pitcher**
- ___ 176. M'burg Hanging Cherries 7" 3 in 1 edge bowl - marigold - satin & nice
- ___ **177. Nippon ruffled bowl w/BW back – purple - very pretty**
- ___ **178. Nippon ruffled bowl w/BW back – marigold - pumpkin & super, a special piece**
- ___ 179. Target 6" squatty vase - peach opal - neat vase
- ___ **180. Stippled Strawberry PCE bowl w/BW back – green - very scarce & pretty**
- ___ 181. Ripple 9" vase - smoke – pretty, has 2 7/8" base
- ___ 182. Ripple 12" vase - amber – pretty, has 2 7/8" base
- ___ **183. Sailboats 6" plate – blue - very rare plate plus nice**
- ___ 184. Pansy pickle dish – marigold - pink & yellow irid.
- ___ **185. Stippled Peacocks ruffled bowl w/ribbed back - purple - rare stippled, nice**
- ___ 186. Vintage fernery – green - scarce color, so much blue irid., you'd swear it was blue
- ___ 187. Leaf Columns 10" vase - lime green - rare color, highly desirable
- ___ 188. Grape & Cable master berry bowl – green - super pretty inside & out
- ___ 189. Fruits & Flower bonbon - blue - electric
- ___ **190. Poppy Show ruffled bowl - ice blue - super ice blue color w/fabulous irid.**
- ___ 191. Leaf Chain deep round blank shaped bowl – marigold - can't say I've seen another
- ___ 192. M'burg Nesting Swan ruffled bowl – green - radium, nice
- ___ 193. Ski Star dome ftd 3 in 1 edge bowl - peach opal - nice
- ___ 194. Heavy Grape 7" ruffled bowl - marigold
- ___ **195. Stippled Grape & Cable 10" ruffled bowl w/BW back - purple - super electric irid., beautiful**
- ___ 196. M'burg Grape Wreath 7" ruffled bowl – green - radium, super
- ___ **197. Acanthus deep round bowl - purple – fantastic, a stunning piece**
- ___ 198. Acanthus deep round bowl – smoke - also a beautiful, a great pair

- ___ 199. Beaded Shell mug - purple
- ___ 200. Peacock Tail 9" plate – marigold - extremely rare & pretty, hard to find plate!
- ___ 201. Scroll Embossed ruffled sauce w/File back – purple - pretty
- ___ 202. Orange Tree Orchard 7 pc. water set – marigold - rare set, tumblers are fabulous
- ___ 203. Old Rose Distilling/Grape & Cable Variant 9" plate - green - very nice example, scarce
- ___ 204. Four Seventy Four milk pitcher - marigold
- ___ 205. Wishbone ftd ruffled bowl – horehound - extremely rare color & nice
- ___ 206. Wishbone ftd ruffled bowl - purple - super example
- ___ 207. Wishbone ftd ruffled bowl - marigold - nice
- ___ 208. Cobblestone ruffled bowl - purple - super!
- ___ 209. Coin Spot ruffled compote – pink - has marigold irid., proof that they made pink Carnival Glass
- ___ 210. Fenton's Peacock at Urn 9" plate – marigold - super pretty dark color
- ___ 211. Dandelion mug – blue - nick on top edge of base
- ___ 212. Dandelion Knights Templar mug – marigold - nice
- ___ 213. Corn bottle - marigold - dark & pretty
- ___ 214. Ski Star dome ftd banana boat shaped bowl - peach opal
- ___ 215. Basketweave Open Edge lg size 2 sides up basket - celeste blue - very rare & highly desirable, nice
- ___ 216. Basketweave Open Edge lg size 2 sides up basket - ice green - scarce, nice
- ___ 217. Basketweave Open Edge lg size 2 sides up basket - white - nice
- ___ 218. Basketweave Open Edge lg size 2 sides up basket - blue
- ___ 219. Basketweave Open Edge lg size 2 sides up basket - marigold
- ___ 220. Wishbone epergne – green - very rare item, minor nick on bottom rim of base
- ___ 221. Stippled Rays ruffled sauce - blue
- ___ 222. Imperial Grape 7 pc. wine set – purple - fantastic
- ___ 223. Grape & Cable Variant 9" plate w/BW back - green
- ___ 224. Grape & Cable Variant 9" plate w/BW back - Ginger Ale - don't really know what color to call this, very pretty, like pastel marigold, different
- ___ 225. Rose Show 9" plate – lime green opal - absolutely fantastic, super rare, super desirable!
- ___ 225a. Rose Show 9" plate - marigold - super pretty, repair on rose
- ___ 226. Waterlily & Cattails 4 pc. table set – marigold - scarce set
- ___ 227. Basketweave Open Edge small size JIP basket - red
- ___ 228. Basketweave Open Edge small size 2 sides up basket - red - nice
- ___ 229. Leaf Chain 3 in 1 edge bowl – green - neat bowl, pretty
- ___ 230. Hearts & Flowers ruffled bowl w/ribbed back - marigold - super, super pretty, minor roughness between two points
- ___ 231. Beads & Flowers 6" plate - purple - super pretty
- ___ 232. Octagon 7 pc. wine set - olive green - very rare color, silvery
- ___ 233. Heavy Grape ruffled master berry bowl - purple
- ___ 234. Fine Rib 10" vase - amber - very rare color & nice
- ___ 235. N's Peacock at Urn master IC bowl – marigold - dark & super
- ___ 236. Stippled Grape & Cable bonbon - marigold pastel, pretty
- ___ 237. Drapery 7" vase - ice blue - rare vase
- ___ 238. Grape Arbor tumbler - ice blue - scarce
- ___ 239. Wreathed Cherry tumbler – marigold - fantastic
- ___ 240. Embossed Scroll 9" plate – purple - beautiful
- ___ 241. Smooth Panels 11 1/2" vase - smoke
- ___ 242. M'burg Peacock 10" ruffled bowl – amethyst - radium, very pretty
- ___ 243. Grapevine Lattice 6" plate – marigold - nick on base
- ___ 244. Fenton's Grape & Cable fruit bowl – green - has Persian Medallion interior, super pretty
- ___ 245. Holly & Berry 7" ruffled bowl – purple - pretty
- ___ 246. Ripple 9 1/2" vase – clambroth - has 2 1/2" base
- ___ 247. Fenton's Peacock at Urn IC shaped bowl – blue - a dandy
- ___ 248. Fenton's Peacock at Urn IC shaped bowl – marigold - dark w/pumpkin irid.
- ___ 249. Grape & Cable sweetmeat - purple
- ___ 250. Hearts & Flowers PCE bowl w/ribbed back – blue - electric & super, very rare & highly desirable, an outstanding piece
- ___ 251. Imperial Grape tumbler - purple - super
- ___ 252. Question Mark ftd plate - purple - fabulous irid.
- ___ 253. M'burg Little Stars 7" ruffled bowl – green - satin & super nice
- ___ 254. Four Flowers 10" IC shaped bowl - peach opal - nice
- ___ 255. Embroidered Mums ruffled bowl w/ribbed back – blue - super w/electric highlights
- ___ 256. Grape & Cable tumblers (2) - purple
- ___ 257. Basketweave Open Edge small size IC shaped bowl - ice green - scarce shape, pretty
- ___ 258. Three Fruits dome ftd ruffled bowl – purple - nice
- ___ 259. Beaded Cable rose bowl - aqua opal
- ___ 260. Rose Show Variant ruffled bowl - marigold - super pretty, does have a nick on rose
- ___ 261. Round Up low ruffled bowl – purple - very pretty
- ___ 262. Round Up ruffled bowl - peach opal - scarce
- ___ 263. Hattie deep ruffled bowl – purple - super electric
- ___ 264. Central Trumpet 9" candlesticks - celeste blue
- ___ 265. Tree Trunk midsize 13" vase – blue - electric & very nice
- ___ 266. Peacocks PCE bowl w/ribbed back – purple - nice
- ___ 267. Concord 3 in 1 edge bowl – marigold - pretty

- ___ 268. Persian Medallion 6" plate - blue - pretty
- ___ 269. Imperial Grape cup & sauce - green
- ___ 270. **Peacocks ruffled bowl w/ribbed back – blue - has electric highlights, a beauty**
- ___ 271. Intaglio Almond cup – marigold - Souvenir of Willow Lakes SD on base
- ___ 272. Dugan Cherries crimped edge ftd 2 sided up bowl - purple - pretty
- ___ 273. Three Fruits ruffled bowl w/plain back – green - super, electric type irid.
- ___ 274. Stork & Rushes tumblers (2) - one blue w/Lattice Band, one marigold w/beads
- ___ 275. Windmill milk pitcher – purple - super pretty, may be a hairline in handle, hard to see
- ___ 276. M'burg Hanging Cherries creamer – marigold - satin
- ___ 277. **Stippled Strawberry ruffled bowl w/ribbed back - purple - scarce, nice**
- ___ 278. Wild Blackberry 3 in 1 edge bowl – green - rare pattern
- ___ 279. **Stippled Rays compote – vaseline - super pretty, very rare, lots of stretchy irid.**
- ___ 280. Puzzle round bonbon - purple - super
- ___ 281. Stag & Holly lg size ftd IC shaped bowl – blue - very pretty
- ___ 282. Rambling Rose tumblers (2) - marigold & blue
- ___ 283. **Wishbone tri-cornered ftd bowl – marigold - dark & nice, rare piece**
- ___ 284. Flute breakfast creamer & sugar – purple - super
- ___ 285. **M'burg Tulip Scroll 6 1/2" vase – amethyst - radium pretty**
- ___ 286. Persian Medallion 3 in 1 edge bowl – green - very pretty, scarce in this color
- ___ 287. Luster Rose butter dish - purple - super
- ___ 288. Leaf & Beads ftd tri-cornered whimsy – marigold - has rayed interior
- ___ 289. N's Thin Rib 9" vase - white - scarce
- ___ 290. **Amaryllis tri-cornered miniature compote – purple - scarce, nice**
- ___ 291. **Basketweave Open Edge lg size IC shaped bowl - ice green - scarce, nice**
- ___ 292. M'burg Whirling Leaves ruffled bowl – amethyst - radium, nice
- ___ 293. Three Fruits 9" plate w/BW back – green - pretty
- ___ 294. Tree Trunk 9 1/2" vase - purple
- ___ 295. **Singing Birds water pitcher – green - scarce, nice**
- ___ 296. Persian Medallion rose bowl – marigold - super pretty
- ___ 297. **Spirilex 10" vase - aqua - very rare vase, nice**
- ___ 298. Greek Key ruffled bowl w/BW back – marigold - very pretty, couple minor nicks on base
- ___ 299. Windmill pickle dish - purple - super!
- ___ 300. **Peacock & Grape spt ftd IC bowl - peach opal - fabulous example, a beauty, minor pinpoint on cleat**
- ___ 301. Six Petal tri-cornered bowl - purple - another super piece
- ___ 302. Star of David ruffled bowl - purple - super!
- ___ 303. **N's Peacock at Urn IC sauce - ice blue - pretty example & scarce**
- ___ 304. Stretch Glass bath jar - celeste blue
- ___ 305. **Persian Medallion 9" plate - blue - fantastic green irid., a beautiful plate!**
- ___ 306. Leaf Chain IC shaped bowl - blue - nice
- ___ 307. N's Thin Rib 8" JIP vase – green - very scarce, pretty
- ___ 308. Butterfly & Berry ftd master berry bowl – amethyst - very pretty, one toe has chip
- ___ 309. M'burg Hobnail Swirl 9" vase – amethyst - minor pinpoint on seam of base
- ___ 310. **Grape & Cable 11" ruffled bowl w/BW back – purple - very pretty**
- ___ 311. Lions 7" IC shaped bowl - marigold - nice
- ___ 312. **Leaf Chain 9" plate - green - extremely hard to find, pretty and this one is exceptional, a real killer!**
- ___ 312a. **Leaf Chain 9" plate - white - very pretty, has yellow type irid.**
- ___ 313. Embossed Scroll 7" ruffled bowl – purple - has Hobstar & Tassel back, pretty
- ___ 314. Apple Tree water pitcher - marigold
- ___ 315. Heavy Grape hldd nappy - purple - pretty
- ___ 316. Grape & Cable 9" plate w/plain back – purple - pretty
- ___ 317. Vintage 6" plate - marigold - scarce, nice
- ___ 318. Gothic Arches 16" vase - marigold - scarce
- ___ 319. Strawberry PCE bowl w/BW back - purple - pretty
- ___ 320. **Stippled Peacocks 9" plate w/ribbed back – blue - very scarce plate, electric & nice!**
- ___ 321. **Stippled Peacocks 9" plate w/ribbed back - marigold - has beautiful yellow & pink irid., fabulous**
- ___ 322. Grape & Gothic Arches & Raspberry tumblers - marigold
- ___ 323. Lattice & Daisy and Bouquet tumblers - marigold
- ___ 324. Imperial Grape and Hula Dancer tumblers – marigold - Hula Dancer is marked IG
- ___ 325. Double Star tumbler - green
- ___ 326. Enameled Forget Me Not tumbler - blue
- ___ 327. Luster Rose sugar bowl base - purple
- ___ 328. Imperial Grape wine bottle – marigold - no stopper
- ___ 329. Pair of Contemporary Carnival pieces
- ___ 330. Ftd Prism Panels vase – marigold - chip on foot
- ___ 331. Lot of Misc. Carnival Glass - all have damage
- ___ 332. Lot of Misc. Carnival Glass



Seeck Auctions

P.O. Box 377
Mason City, Iowa 50402

PRESORTED
FIRST CLASS MAIL
U.S. POSTAGE
PAID
MAIL EXPEDITORS

165

Southern California Carnival Glass Club's Convention Auction

Saturday, March 5, 2011 -- 9:30 A.M.
Ayres Country Suites Hotel
1945 E. Holt Blvd.
Ontario, California 91764
Call (909)390-7778 for reservations

T4 P1 265
LEE MARKLEY
PO BOX 306
MENTONE IN 46539-0306



10



15



35



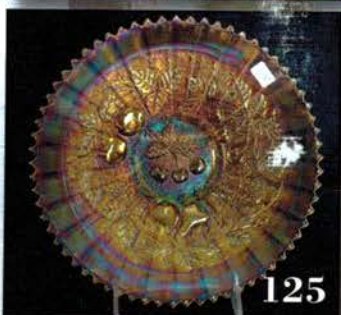
46



200



100



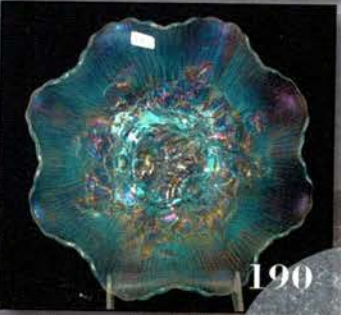
125



160



175



190



305



321