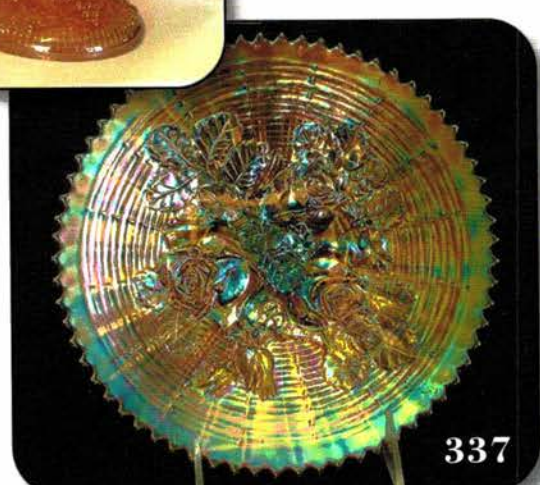
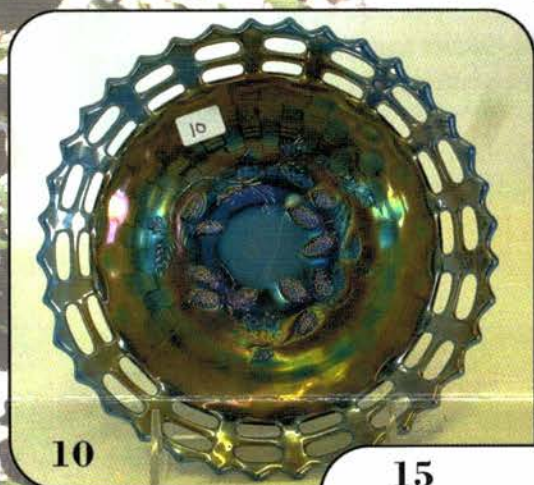


Texas Carnival Glass Club Convention Auction

Saturday, February 26th, 2011 - 9:30 A.M.

Sheraton Houston Brookhollow Hotel
3000 North Loop West Freeway • Houston, Texas
Call (713)613-0633 for reservations



JIM & JAN SEECK

Seeck Auctions

641-424-1116

SATURDAY, FEBRUARY 26th, 2011 - 9:30 A.M.



Sheraton Houston Brookhollow Hotel • Houston, Texas

NO BUYER'S PREMIUM

OPEN TO THE PUBLIC



The complete catalog with pictures is online at: www.seeckauction.com

Also, please email us and we will put you on our email mailing list for auction notices.

Seeck Auctions is pleased to be bringing the Bob and Peggy Hughes collection of Carnival Glass to the Texas Club Convention. Bob and Peggy have been collecting for several years and they especially enjoyed putting together one of the best Open Edge collections in the hobby. The auction has a very nice variety of glass. Hope to see you all in Houston.

If staying at the Hotel, call direct for room reservations: 713-613-0633. Let them know you are with the Texas Carnival Glass Club. Group rate ends February 8th, 2011. **Texas Club Convention info:** Contact Club President Emmett Morgan at: 979-836-7896 or president@txcarnivalglass.org

Terms: Cash or Check, VISA and MasterCard accepted w/proper ID. 4% Clerking Fee on all purchases except for payment of cash or check. Announcements made day of sale take precedence over any printed information.

**** Sales Tax will be charged, please bring your tax-exempt numbers.**

Visit the Texas Carnival Glass Club Website: www.texascarnivalglass.org

We have 3 options for absentee bidding:

1) If you DO NOT have internet access or access to our website, you can: Call us by phone to enter your bids at (641) 424-1116 OR By sending the numbers of the item(s) desired and the amount bid on each to: Seeck Auctions, PO Box 377, Mason City, Iowa 50402. (The mail has not been very dependable. We would prefer you call us with your bids rather than send them in a letter.)

- All written and called in bids will be entered into the online catalog by us.
- Have all bids in by Wed., February 23rd

2) Enter your bids from our website into our online catalog through the Auctionflex system.

When you get to the online catalog, you will need to login as a bidder. For the first time you will need to **set up your account** by creating a username and password. This will include filling out a form with your name, address, etc. You will also need to **register for the auction** which will ask you to enter a valid credit card number. This card will be validated by a \$1 charge to your card. This will only happen once and you will now be able to enter bids through our online catalog by just logging in with your user name and password. You will use this user name and password for all our auctions. You are not required to pay by credit card if you are successful. This is just a safeguard for us if someone does not pay. We will let you know what you owe us through an email and you can decide how you would like to pay us.

An exciting advantage of entering your bids online yourself, is the option to be notified by email if you are outbid on an item. You will know when you are outbid on an item and you can increase your bid on that item or bid on something else. **There will be a cutoff date and time for entering your bids online.** After this time has passed, you will not be able to enter your bids from our online catalog.

• Remember, that just because you are the high bidder in the online catalog, this does not mean you have won the item. Your bid will still need to beat the floor bidders and live phone bidders. This system will run our absentee bids just as we did before. You will still be able to buy the item lower than your online bid unless someone on the floor bids you higher.

3) Live phone bidding is available on pieces with an estimated sale price of \$500 or more. If you would like to participate in live phone bidding, contact us by **the Tuesday before the auction (February 22nd)**. We will need to know the lot# and the phone number that you can be reached at on the day of the auction. We will also need your home phone number if different than the above number. Please call with questions: 641-424-1116.

There is a \$7 handling charge for each successful bid. Shipping and insurance charges are additional.

Bidders will be notified by phone/email if their bid(s) are successful. This will be done 1 - 3 days after the auction.

*** If you do not receive an item that sold for less than your bid, assume we cancelled your bid because the item had a severe manufacture problem, damage or was not listed correctly.

**BID INCREMENTS: \$1 - \$100/\$5 \$100 - \$200/\$10 \$200 - \$700/\$25 \$700 - \$1,500/\$50
\$1,500 - \$3,000/\$100 \$3,000+ Auctioneer's Discretion**

- ___ 1. Blackberry Open Edge ruffled basket - amethyst
- ___ 2. Blackberry Open Edge ruffled basket - green
- ___ 3. Blackberry open edge ruffled basket - aqua green - from a distance looks like a green but has a blue tint to the glass
- ___ 4. Blackberry Open Edge ruffled basket - marigold
- ___ 5. African Head novelty jar - never seen this before, has screw base & light marigold irid.
- ___ 6. Hobstar & Waffle Block lg basket – marigold - scarce
- ___ 7. Daisy handled basket - marigold
- ___ 8. Caroline handled basket - peach opal
- ___ 9. Lot of 3 bottles – marigold - two Golden Weddings & one Canada Dry, all to go
- ___ 10. Blackberry Open Edge 8" plate – blue - super nice, very rare
- ___ 11. Blackberry Open Edge 8" plate – marigold - also very rare, highly desirable
- ___ 12. Circle Scroll JIP hatshape – marigold - scarce & nice
- ___ 13. Grape & Cable 14 pc. master punch set – marigold - beautiful pastel irid., lots of pinks, RARE
- ___ 14. Grape & Cable 9 pc. mid-size punch set – marigold - ruffled & very nice, lots of pretty pastel type irid.
- ___ 15. Grape & Cable 8 pc. small punch set – marigold ruffled, very nice.
- ___ 16. Waffle Block 8 pc. punch set – marigold - very modern looking set, one punch cup has handle damage
- ___ 17. Peacock at the Fountain punch bowl & base - marigold - very nice set & scarce
- ___ 18. Orange Tree 8 pc. punch set – marigold - round shape, nice
- ___ 19. Acorn Burrs 8 pc. punch set – marigold - ruffled shape, dark irid. on inside, light irid. on outside of bowl
- ___ 20. Fashion 8 pc. punch set – marigold - round shape, very rare in this shape
- ___ 21. M'burg Multi Fruits & Flowers 11 pc. punch set - marigold - rare set, nice
- ___ 22. Four Seventy Four 9 pc. punch set – marigold - nice, minor no harm nick on inside of base rim
- ___ 23. Imperial Wide Panel punch bowl & base - marigold
- ___ 24. Stork & Rushes 9 pc. punch set – marigold - hard to find set
- ___ 25. Fruit Salad 12 pc. punch set – marigold - hard to find set, chip on top edge of base
- ___ 26. Wreath of Roses 7 pc. ruffled punch set – marigold - very pretty, one punch cup has chip on base
- ___ 27. Twins fruit bowl & base – marigold - minor pinpoint on ruffle
- ___ 28. Broken Arches 11 pc round punch set – marigold scarce
- ___ 29. Three Row Open Edge 9" ruffled bowl – red - extremely rare, only one I know of
- ___ 30. Three Row Open Edge 9" ruffled bowl – purple - another rare one, only one I know of, cracked
- ___ 31. Three Row Open Edge 9" ruffled bowl - celeste blue - super pretty & scarce
- ___ 32. Three Row Open Edge 9" ruffled bowl - ice green - very pretty
- ___ 33. Three Row Open Edge 9" ruffled bowl – white - heavy stretch irid., neat bowl
- ___ 34. Three Row Open Edge 9" ruffled bowl – white - very nice
- ___ 35. Three Row Open Edge 2 sides up basket – marigold - rare
- ___ 36. Three Row Open Edge 2 sides up basket – white - fantastic, a pretty piece
- ___ 37. Golden Harvest 7 pc. wine set – marigold –
- ___ 38. Octagon 4 pc. wine set – marigold - stopper has crack
- ___ 39. Band of Stars 8 pc. wine set – marigold - includes bottle, 6 wines & under plate, scarce
- ___ 40. Star & Fan 8 pc. wine set – marigold - includes bottle, 6 wines & under plate
- ___ 41. Miniature Hobnail 8 pc. wine set – marigold - includes bottle, 6 wines & under plate
- ___ 42. Zipper Stitch 8 pc. wine set – marigold - includes bottle, 6 wines & under plate
- ___ 43. Wickerwork bowl w/base - marigold
- ___ 44. Wickerwork bowl w/base – red - non iridized
- ___ 45. Classic Arts 7 1/2" vase – marigold - rare piece, haven't sold many of these
- ___ 46. Egyptian Queen 6" vase – marigold - scarce
- ___ 47. Classic Arts rose bowl – marigold
- ___ 48. Three Diamonds 3 pc. guest set – marigold - scarce set
- ___ 49. English Hob & Buttons epergne – marigold - has nude lady post
- ___ 50. Curved Star oval jardinière – marigold - nice
- ___ 51. Whirling Star large bowl & chop plate – marigold - 11" bowl and 14" chop plate, manufacture mark on edge of chop plate
- ___ 52. Western Thistle 11" chop plate – marigold - scarce
- ___ 53. Moonprint ruffled punch bowl & base – marigold - polished chip on ruffle of bowl
- ___ 54. Inca bottle - marigold
- ___ 55. Covered Swan on Nest – marigold - nick on inner rim of top
- ___ 56. Covered Hen on Nest - marigold
- ___ 57. Rose Garden 7 1/2" bowl – marigold - might be large rose bowl
- ___ 58. Tartan large spittoon – marigold - pretty
- ___ 59. Curved Star covered sugar & under plate – marigold - tiny nick on base of sugar
- ___ 60. Pineapple rose bowl - marigold
- ___ 61. Jacob's Ladder rose bowl - marigold

- ___ 62. Moonprint oval cider pitcher – marigold - pretty, scarce
- ___ 63. Banded Diamonds & Bars oval cider pitcher - marigold
- ___ 64. Star & Hobs rose bowl w/metal holder - marigold
- ___ 65. Sunken Daisies ftd 9" round bowl – marigold - minor roughness on feet
- ___ 66. Daisy Block Rowboat - marigold
- ___ 67. Moonprint cvd pickle jar – marigold - chip on top of base and lid
- ___ 68. Fleur-de-lis lg jardinière – marigold - minor pinpoint on flat of base, pretty
- ___ 69. African Shield flower holder - marigold
- ___ 70. Basketweave Open Edge JIP basket - red slag - scarce & nice
- ___ 71. Basketweave Open Edge JIP basket - reverse amberina - has more of an olive green base color, neat basket
- ___ 72. Basketweave Open Edge JIP baskets (2) - amberina red - choice
- ___ 73. Basketweave Open Edge JIP basket - red
- ___ 74. Basketweave Open Edge JIP baskets (2) – aqua - choice
- ___ 75. Basketweave Open Edge JIP basket – amber - pretty
- ___ 76. Basketweave Open Edge JIP basket - dark green - pretty
- ___ 77. Basketweave Open Edge JIP basket – green - scarce color
- ___ 78. Basketweave Open Edge JIP basket - renninger blue - not sure of color, dark irid.
- ___ 79. Basketweave Open Edge JIP basket - odd green - an odd lime green color
- ___ 80. Basketweave Open Edge JIP basket - vaseline
- ___ 81. Basketweave Open Edge JIP basket - blue
- ___ 82. Basketweave Open Edge JIP basket - marigold
- ___ 83. Basketweave Open Edge round basket – marigold - whimsy shape, not many around
- ___ 84. Basketweave Open Edge ruffled basket - celeste blue - rare color, nice
- ___ 85. Basketweave Open Edge ruffled basket - ice green - very nice
- ___ 86. Basketweave Open Edge ruffled basket – white - nice irid.
- ___ 87. Basketweave Open Edge ruffled basket – red - nice
- ___ 88. Basketweave Open Edge ruffled basket - amberina red
- ___ 89. Basketweave Open Edge ruffled baskets – aqua - choice
- ___ 90. Basketweave Open Edge ruffled basket – green - dark irid.
- ___ 91. Basketweave Open Edge ruffled basket - forest green - light on irid.
- ___ 92. Basketweave Open Edge ruffled basket - powder blue
- ___ 93. Basketweave Open Edge ruffled basket - blue
- ___ 94. Basketweave Open Edge ruffled basket - black amethyst - scarce color
- ___ 95. Basketweave Open Edge ruffled basket - dark purple
- ___ 96. Basketweave Open Edge ruffled basket - amethyst
- ___ 97. Basketweave Open Edge ruffled basket - vaseline
- ___ 98. Basketweave Open Edge ruffled basket - marigold
- ___ 99. Basketweave Open Edge 2 sides up basket - reverse amberina opal - very rare color & nice
- ___ 100. Basketweave Open Edge 2 sides up basket – red - scarce
- ___ 101. Basketweave Open Edge 2 sides up baskets - powder blue - choice
- ___ 102. Basketweave Open Edge 2 sides up basket - black amethyst - scarce color
- ___ 103. Basketweave Open Edge 2 sides up basket - blue
- ___ 104. Basketweave Open Edge 2 sides up basket – marigold - choice
- ___ 105. Tiger Lily water pitcher – marigold - non-American
- ___ 106. Rising Sun 7 pc. water set – marigold - footed version.
- ___ 107. Buzz Saw & File 7 pc. water set – marigold - one tumbler has chip on base
- ___ 108. Diamond Cut Shields 7 pc. water set - marigold
- ___ 109. Grand Thistle 7 pc. water set – amber - rare set, very nice
- ___ 110. Rising Sun water pitcher – marigold - minor pinpoint on base.
- ___ 111. Diamond Lace 7 pc. water set – purple - lots of blue irid.
- ___ 112. Tiger Lily 7 pc water set – marigold - Imperial's version.
- ___ 113. Wine & Roses 7 pc. Cider set - marigold
- ___ 114. Wreath Cherries 7 pc. water set – marigold - pretty pastel iridescence
- ___ 115. Waffle Block water pitcher - marigold
- ___ 116. Waffle Block tumbler - marigold
- ___ 117. Maple Leaf 7 pc. water set - purple
- ___ 118. Fieldflower 7 pc. water set – marigold - chip on one tumbler.
- ___ 119. N's Peacock at the Fountain water pitcher - marigold - minor pinpoint on side of lip
- ___ 120. N's Peacock at the Fountain tumblers – marigold choice
- ___ 121. Fashion 7 pc. water set - marigold - pinpoint on top of one tumbler
- ___ 122. Orange Tree Scroll tankard water pitcher - marigold scarce
- ___ 123. Orange Tree Scroll tumbler - marigold
- ___ 124. N's Peach water pitcher – white - has gold peaches
- ___ 125. N's Peach tumbler – white - gold peaches
- ___ 126. Octagon lg 7 pc. water set – marigold - heat check in base of pitcher

- ___ 127. Octagon tumblers – marigold - these have flat bottoms, choice
- ___ 128. Lattice & Grape 7 pc. tankard water set – marigold nice
- ___ 129. **File water pitcher – marigold - neat pitcher**
- ___ 130. File tumbler - marigold
- ___ 131. **Grape & Cable tankard 7 pc. water set - marigold - scarce set, tumblers are all tankards**
- ___ 132. Imperial Grape water pitcher – purple - scarce
- ___ 133. Diamond & Daisy Cut 4 pc. water set - marigold
- ___ 134. Grape Arbor tankard water pitcher - marigold
- ___ 135. **M'burg Feather & Heart water pitcher – marigold - scarce**
- ___ 136. M'burg Feather & Heart tumbler - marigold
- ___ 137. Heavy Iris tankard water pitcher – marigold - nice
- ___ 138. Heavy Iris tumbler - marigold
- ___ 139. Grape & Cable tumblers – marigold - choice
- ___ 140. Tiger Lily tumblers – marigold - choice
- ___ 141. Butterfly & Berry tumblers – marigold - choice
- ___ 142. Waterlily & Cattail tumblers – marigold - choice
- ___ 143. Raspberry water pitcher - marigold
- ___ 144. Raspberry tumbler – purple - pretty
- ___ 145. Blackberry Open Edge two sides up basket – aqua - nice
- ___ 146. Blackberry Open Edge two sides up baskets – blue - choice
- ___ 147. Blackberry Open Edge two sides up baskets - marigold - choice
- ___ 148. Thistle banana boat – blue - feet have been polished to make it sit flat
- ___ 149. Thistle Banana boat – marigold - pretty
- ___ 150. **Fenton's Grape & Cable fruit bowl – green - has Persian Medallion interior, super**
- ___ 151. **Fenton's Grape & Cable fruit bowl – amethyst - has Persian Medallion interior, nice**
- ___ 152. **Fenton's Grape & Cable fruit bowl – blue - has Persian Medallion interior, pretty**
- ___ 153. Fenton's Grape & Cable fruit bowl – marigold - has Persian Medallion interior
- ___ 154. **Orange Tree ruffled fruit bowl – marigold**
- ___ 155. Grape & Cable small size fruit bowl - marigold
- ___ 156. **Luster Rose footed Fruit bowl – red - extremely rare item, very nice**
- ___ 157. Intaglio Cherries round bowl - marigold
- ___ 158. **M'burg Peacock at Urn master IC bowl – green – satin, nice**
- ___ 159. Persian Garden large IC shaped bowl - peach opal - scarce
- ___ 160. Holly IC shaped bowl – amber - very pretty
- ___ 161. Stag & Holly spt ftd IC shaped bowl - marigold
- ___ 162. **Basketweave Open Edge lg size IC shaped bowl - celeste blue - scarce & nice**
- ___ 163. **Basketweave Open Edge lg size IC shaped bowl - ice green - scarce**
- ___ 164. Basketweave Open Edge lg size IC shaped bowl - white - scarce
- ___ 165. N's Flute 4 pc. table set - marigold
- ___ 166. Octagon 4 pc. table set - marigold
- ___ 167. **Acorn Burrs 4 pc. table set – marigold - scarce set**
- ___ 168. Acorn Burrs creamer & spooner – purple - choice
- ___ 169. **Dahlia 4 pc. table set – marigold - sugar lid has chip, scarce set**
- ___ 170. **Blackberry Open Edge whimsy 6 1/2" vase – blue - super rare vase, great piece**
- ___ 171. **Blackberry Open Edge whimsy 7 3/4" vase – marigold - rare whimsy, another great piece**
- ___ 172. Ripple 12 1/2" vase - olive green - has 3 3/8" base
- ___ 173. Ripple 7 1/2" squatty vase – purple - has 3 3/8" base, 6 1/4" mouth, pretty
- ___ 174. Beaded Bullseye 6 1/2" squatty vase - marigold
- ___ 175. Tree Trunk 7" squatty vase - green
- ___ 176. Tree Trunk 6" squatty vase - purple
- ___ 177. Rustic mid size 13" vase - green
- ___ 178. Rustic mid size 14" vase – blue - has crimped edge.
- ___ 179. Rustic mid size 16" vase - marigold
- ___ 180. **Smooth Panels 7 1/2" vase – purple - super inside and out.**
- ___ 181. **N's Thin Rib 7" JIP vase – marigold - very nice**
- ___ 182. **Morning Glory 12" funeral vase – purple - very pretty, has 9" mouth**
- ___ 183. Morning Glory 16" vase – marigold - nice
- ___ 184. Thin Panels 7 1/2" JIP vase – purple - nice
- ___ 185. **Fine Rib 12 1/2" vase – red - hard to find in this height**
- ___ 186. **Fine Rib 11" vase – red - scarce, minor pinpoint**
- ___ 187. Diamond Points 6 1/4" squatty vase – purple - nice
- ___ 188. **Four Seventy Four 10" vase – marigold - very rare vase, has nick on one point of foot**
- ___ 189. **Formal JIP vase – marigold - very scarce vase**
- ___ 190. Spearhead & Ribs 15" vase - blue
- ___ 191. Spearhead & Ribs 15" vase - marigold
- ___ 192. Morning Glory 10 1/2" JIP vase – marigold - nice
- ___ 193. **N's Thin Rib mid-size 12" vase – purple - nice**
- ___ 194. Pulled Loop 9 1/2" vase - peach opal
- ___ 195. Cut Flowers vase - marigold
- ___ 196. Ripple 7 3/4" vase – amber - has 2 7/8" base
- ___ 197. Ftd Fine Rib 5" JIP vase – blue - pretty
- ___ 198. April Showers 7" squatty vase - blue
- ___ 199. Pulled Loop 12 1/2" vase – purple - minor nicks on base
- ___ 200. **Tree Trunk 12 1/2" mid-size vase - marigold**
- ___ 201. **File 5 1/2" whimsy vase – marigold - cute piece**
- ___ 202. Lined Lattice 10" vase - purple
- ___ 203. Leaf Columns 9" vase - marigold
- ___ 204. Ripple 10 1/2" vase – purple - has 2 7/8" base, pretty
- ___ 205. Paneled Diamond & Bows 6 1/2" vase - marigold

- ____ 206. Rococco vase – marigold - minor chip on base
 ____ 207. Tree Trunk 10" vase – purple - chip on base
 ____ 208. Mary Ann vase – marigold - chip on base
 ____ 209. **Rustic 19" funeral vase – marigold - nice color top to bottom**
 ____ 210. Rustic 10" vase - blue
 ____ 211. **Zipper Loop 10" kerosene lamp – smoke - has 6" base, very rare in this size, nice**
 ____ 212. **Zipper Loop 9" kerosene lamp – marigold - has a 5" base and is very pretty.**
 ____ 213. **Zipper Loop 4 1/4" finger lamp – marigold - 4 1/4" base, dark & super**
 ____ 214. Pansy ruffled bowl – purple - super pretty
 ____ 215. **Poppy Show ruffled bowl – marigold - dark & pretty, a dandy**
 ____ 216. Pony ruffled bowl - marigold
 ____ 217. Greek Key ruffled bowl w/BW - purple
 ____ 218. **Dragon & Lotus ruffled bowl - marigold on moonstone - rare bowl**
 ____ 219. Dragon & Lotus ruffled bowl - marigold
 ____ 220. **M'burg Hanging Cherries ruffled bowl w/ Hobnail back - amethyst - very rare & highly desirable**
 ____ 221. Thistle ruffled bowl - green
 ____ 222. Holly 6 ruffled bowl – white - light on iridescence
 ____ 223. Fenton Peacock at Urn ruffled bowl – green - scarce color
 ____ 224. N's Grape Leaves ruffled bowl - purple
 ____ 225. Three Fruits dome ftd ruffled bowl – marigold - pretty
 ____ 226. Star of David & Bows dome ftd ruffled bowl - amethyst
 ____ 227. Wishbone ftd ruffled bowl - purple
 ____ 228. Apple Blossom Twigs ruffled bowl w/smooth edge peach opal
 ____ 229. Apple Blossom Twigs ruffled bowl - marigold
 ____ 230. **NUART Homestead chop plate – marigold - very pretty, rare**
 ____ 231. **Blackberry Open Edge deep round basket – white very rare shape**
 ____ 232. **Blackberry Open Edge deep round basket – blue pretty**
 ____ 233. Grape & Cable hatpin holder - marigold
 ____ 234. Orange Tree hatpin holder – marigold - couple of pinpoint on toes
 ____ 235. **Fleur De Lis 10 1/2" vase – marigold – dark, nice**
 ____ 236. Sunflower & Diamonds vase – marigold - nice
 ____ 237. **Kulor 8" large size vase – marigold – scarce, nice**
 ____ 238. **Kulor 6" vase – marigold - scarce & nice, nick on top edge**
 ____ 239. Footed Prism Panels vase – marigold - nick on toe
 ____ 240. Rose Garden 9 1/2" vase – marigold - very pretty
 ____ 241. Paneled Cane 8" vase – marigold - roughness on base
 ____ 242. Bishop's Mitre 8" vase – marigold - nice
 ____ 243. **Western Thistle 5 1/4" vase – marigold - very nice, rare**
 ____ 244. Waterlily ftd ruffled master berry bowl - marigold - pretty
 ____ 245. Waterlily ftd IC shaped master berry bowl -marigold
 ____ 246. Two Flowers ftd ruffled master berry bowl -marigold
 ____ 247. Fantail ftd round bowl – marigold - pinpoint on top point
 ____ 248. Butterfly & Tulip two sides up ftd bowl - marigold - scarce, manufacture roughness around feet
 ____ 249. Two Flowers lg ftd ruffled bowl – marigold - pretty
 ____ 250. Stag & Holly lg ftd ruffled bowl – marigold - nice
 ____ 251. **Basketweave Open Edge lg size square shaped basket - celeste blue - very pretty & scarce**
 ____ 252. **Basketweave Open Edge lg size square shaped basket - ice green - nice**
 ____ 253. **Basketweave Open Edge lg size square shaped basket - white**
 ____ 254. **Raspberry milk pitcher – green - scarce, nice**
 ____ 255. **Raspberry milk pitcher – purple - nice**
 ____ 256. Wreathed Cherry 6 pc. oval berry set - purple
 ____ 257. Wreathed Cherry 3 pc. oval berry set - marigold
 ____ 258. **Acorn Burrs 7 pc. berry set – purple – scarce, nice**
 ____ 259. **Acorn Burrs 9 pc. berry set – marigold - pretty set**
 ____ 260. Waterlily & Cattails 8 pc. berry set – marigold - unusual
 ____ 261. **Dahlia 7 pc. berry set – marigold - very pretty set**
 ____ 262. Fruits & Flowers 7 pc. ruffled berry set – green - pretty set, minor pinpoint on inside edge of bowl
 ____ 263. Snow Fancy 8 pc. berry set – marigold - scarce set
 ____ 264. **Grape & Cable 7 pc. berry set – marigold - very pretty set**
 ____ 265. M'burg Boutonniere ruffled compote – amethyst - satin
 ____ 266. Mikado round shaped giant compote – marigold - nice
 ____ 267. **Hearts & Flowers ruffled compote – marigold - pretty**
 ____ 268. Blackberry Open Edge square shaped basket – red - chip on base
 ____ 269. **Pair of Crucifix candlesticks – marigold - very rare matching pair, nice**
 ____ 270. **Wild Rose Open Edge bowl – blue - nice, minor no harm pinpoint on inner edge**
 ____ 271. Wild Rose Open Edge bowl - purple
 ____ 272. Wild Rose Open Edge bowl – marigold – dark, nice
 ____ 273. Wild Rose Open Edge bowl – green - has Rayed interior

- ___ 274. Wild Rose Open Edge bowl – marigold - this has a plain interior
- ___ 275. **Wild Rose Open Edge bowl – marigold - has a very unusual inside plunger, the Rays are flat and has a dot in the center, only one I remember seeing this way**
- ___ 276. Wild Rose Open Edge rose bowl – marigold - very rare shape, has plain interior
- ___ 277. Wild Rose Open Edge nut bowl – blue - scarce color & pretty
- ___ 278. Wild Rose Open Edge nut bowl – purple - very pretty
- ___ 279. Wild Rose Open Edge nut bowl – green
- ___ 280. Wild Rose nut bowl – marigold - has Rayed interior
- ___ 281. Wild Rose nut bowl – green - has rayed interior
- ___ 282. N's Bushel Basket – marigold - nice
- ___ 283. **Wild Rose syrup – marigold - nice, very scarce**
- ___ 284. Swan salt – purple - scarce color
- ___ 285. **Poppy pickle dish – marigold - pretty**
- ___ 286. Drapery candy dish – marigold - super pretty
- ___ 287. **Inverted Strawberry candlestick - marigold**
- ___ 288. Question Mark ftd plate – marigold - scarce
- ___ 289. **Good luck PCE bowl – purple - spectacular blue irid., has ribbed back.**
- ___ 290. **Good Luck PCE bowl – marigold - super pumpkin irid., has ribbed back**
- ___ 291. Cherry Chain 10" large ruffled bowl – marigold - minor flake on edge
- ___ 292. Valentine 10" ruffled bowl – marigold - rare
- ___ 293. **M'burg Peacock at Urn 10" ruffled bowl – marigold satin, scarce**
- ___ 294. M'burg Rosalind 10" ruffled bowl – marigold - satin
- ___ 295. M'burg Blackberry Wreath 10" ruffled bowl - marigold - satin
- ___ 296. **Wishbone epergne – marigold – scarce & very nice**
- ___ 297. Fishnet epergne - peach opal - nice
- ___ 298. Ribbon Tie 3 in 1 edge low bowl – blue - nice
- ___ 299. **M'burg Big Fish 3 in 1 edge bowl – marigold - radium & very rare, a hard piece to get**
- ___ 300. Stippled Shell & Wild Rose 3 in 1 edge bowl - marigold, exterior to the N's Grape Leaves bowls
- ___ 301. Dragon & Lotus 3 in 1 edge bowl – green - pretty, minor heat check in base
- ___ 302. Miller's Furniture Basketweave Open Edge 2 sides up basket - marigold
- ___ 303. **Wide Panel epergne – marigold - may be the prettiest one I have ever sold, couple of minor spots around one hole**
- ___ 304. Persian Medallion hair receiver – marigold - nice
- ___ 305. Leaf & Beads rose bowl - blue
- ___ 306. Fashion rose bowl - marigold
- ___ 307. Stag & Holly giant rose bowl – marigold - light color
- ___ 308. Daisy & Plume rose bowl - marigold
- ___ 309. Nautilus whimsy creamer & sugar – purple - chip on creamer, so both for one money
- ___ 310. Snow fancy creamer & sugar – marigold - chip on top edge of creamer
- ___ 311. **Horse Medallion 7" plate – marigold - nice**
- ___ 312. Pinecone saucer shaped 6" plate - marigold
- ___ 313. Acorn ruffled bowl - yellow amber - has an unusual base color
- ___ 314. Pansy dresser tray - amber
- ___ 315. Pinecone 7" IC shaped bowl - marigold
- ___ 316. **Grape & Cable sweetmeat – marigold - extremely rare and super**
- ___ 317. **Grape & Cable cracker jar – marigold - very pretty, minor pinpoint on inside rim of base, no harm**
- ___ 318. **Grape & Cable whiskey decanter – marigold - scarce & desirable**
- ___ 319. **Grape & Cable shot glass – marigold - nice**
- ___ 320. Heart & Vine CRE bowl - blue
- ___ 321. **Blackberry Open edge ruffled basket – red - has some manufacture sharp points, but no damage**
- ___ 322. Blackberry Open Edge ruffled basket – aqua - nice
- ___ 323. Blackberry Open Edge ruffled basket - dark amber - scarce color
- ___ 324. Blackberry Open Edge ruffled basket - blue
- ___ 325. Snow Fancy 10" deep round bowl - marigold
- ___ 326. Little Flowers deep round bowl – blue - very pretty
- ___ 327. Persian Medallion deep round bowl – marigold - pretty
- ___ 328. Grape & Cable hatshape - purple
- ___ 329. Lattice & Points ruffled bowl - marigold
- ___ 330. **Orange Tree w/Trunk 9" plate – marigold - nice**
- ___ 331. Scroll Embossed 9" plate - purple
- ___ 332. Acanthus chop plate – marigold - very nice
- ___ 333. Three Fruits 9" plate – purple - has basketweave back
- ___ 334. Three Fruits 9" plate – marigold - has basketweave back
- ___ 335. **Holly 9" plate - dark bluish green - funny color, nice irid.**
- ___ 336. Holly 9" plate - marigold
- ___ 337. **Rose Show Variant 9" plate – marigold - very rare & pretty, nice piece**
- ___ 338. Hobnail lamp in marigold and Lamp shape - lamp shade is milk glass, the Hobnail lamp is contemporary
- ___ 339. Carnival Glass pieces (3) - all marigold, all to go
- ___ 340. Stippled Strawberry ruffled bowl - lime green - has ribbed back, 5 points have chips
- ___ 341. Good Luck ruffled bowl – purple - point chipped & polished
- ___ 342. Carnival Glass pieces (3) – damaged, all to go
- ___ 343. Maple Leaf butter dish top w/wrong bottom - purple - don't match
- ___ 344. Carnival Glass pieces (3) – damaged, all to go



269

Seeck Auctions

P.O. Box 377
Mason City, Iowa 50402

PRESORTED
FIRST CLASS MAIL
U.S. POSTAGE
PAID
MAIL EXPEDITORS

Texas Carnival Glass Club Convention Auction

Saturday, February 26th, 2011
9:30 A.M.

Sheraton Houston Brookhollow Hotel
3000 North Loop West Freeway
Houston, Texas
Call (713)613-0633 for reservations

T4 P1 227
LEE MARKLEY
PO BOX 306
MENTONE IN 46539-0306

