



is proud to present the

2011 Tampa Bay Carnival Glass Club Convention Auction

Friday & Saturday, February 4th & 5th, 2011

Contemporary Auction starts Friday at 1:30 pm

Contemporary Preview on Thursday, February 3rd from 3:00 to 5:30 pm

Vintage Auction starts Saturday at 9:30 am

Vintage Preview on Friday, February 5th after Banquet Approx. 8:30 pm
and on Saturday, February 6th from 8:00 to 9:30 am

Dolphin Beach Resort

4900 Gulf Boulevard, St. Pete Beach, Florida 33706

Phone: 727-360-7011

Public Welcome



380



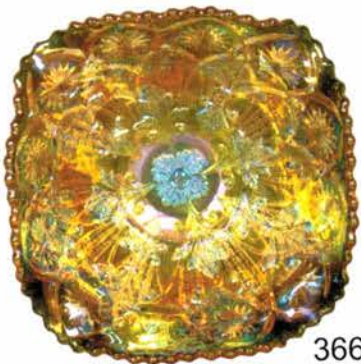
379



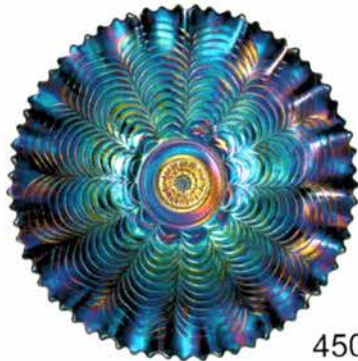
362



298



366



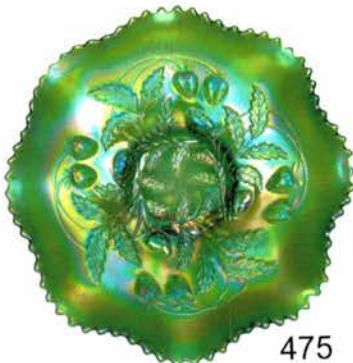
450



325



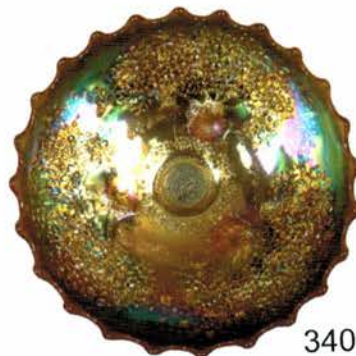
370



475



369



340



300

2011 Tampa Bay Carnival Glass Club Convention Auction

Dolphin Beach Resort • 4900 Gulf Boulevard • St. Pete Beach, Florida 33706 • **Reservations:** 727-360-7011
Convention Room Rate \$95.00 and Up, plus tax. Rate is good until January 19th, 2011. After this date, please ask for Barbara Dodge

This year we will be offering the vintage and contemporary carnival glass collections of Mr. Elliot Treby, of Royal Palm Beach Florida. Friday February 4th, Contemporary Carnival Glass Auction & Saturday February 5th, Vintage Carnival Glass Auction. Both days promise to hold some extremely rare and beautiful glass with many one of a kinds. Please call now and make your reservations! Can't attend? Live Proxibid internet bidding available both days. Absentee/ phone bidding are also accepted. Just contact our office at 503-256-1226 or 503-756-2629. All absentee and phone bids are due by, Thursday February 3rd, 6:00pm EST. **PUBLIC WELCOME**

Absentee Bid Policy

Absentee / Phone bids will be gladly accepted by either placing bids through our website or contacting us at our office: (503) 256-1226 or (503) 756-2629. **The deadline for all absentee bids will be Thursday, February 3rd, 2010, 6:00 pm EST.** A Credit Card may be required for submitting absentee or live phone bids if not known by Remmen Auction. By submitting an absentee/ phone bid you are entering a contractual agreement with Remmen Auction Service and will take full responsibility to honor any/or all bids we may execute for you. Items are bid on in excellent condition without damage OR as described in our brochures. We will always do our best to describe each item as accurately as possible. All of the items in this auction are photographed and you may view each item on our website. Our photos are extremely accurate, so please use your own judgment concerning color and iridescence when placing an absentee bid through our site. We will not accept frivolous returns. Your absentee bid will be entered just as if you are present at the auction and bidding yourself. Bids will not be executed if damage to any item is found during the auction that has not been described in brochure. A \$7.50 handling charge for each successful absentee bid will be added to the selling price, \$25.00 for larger items. Auctioneer will notify successful bidders within 1-7 days of auctions end. Payment in full, plus estimated postage, insurance, and handling are required within 10 days of notification and before any item is shipped or delivered to buyer. Due to travel time for this auction, please allow up to 4 weeks for delivery of your items. In the event of a tie bid, bidders in attendance will have precedence over all absentee bids. In the event of a tie bid between absentee bidders, the earliest bid received will have precedence. Remmen Auction offers absentee/phone bidding as a convenience to our customers and will not be held responsible for errors or failure to execute bids.

Live Phone Bidding

Live phone bidding will be accepted at this auction. Due to limited phone space, please be sure to submit your phone bid request early. **Due to limitation, we apologize we cannot accept phone bids with an auction estimate below \$500.00. All phone bid request must be submitted no later than Thursday, February 3rd, 6:00 pm EST.**

Terms and Conditions of Sale

Cash, Pre-approved Check, Visa, MasterCard, Discover Card, and American Express are accepted. A 4% Buyer's Premium will apply to all purchases with the exception of Cash or Check. All items must be paid for before they leave the premises. All statements made the day of sale will take precedence over any and all printed material. All items are being sold without guarantee or warranty implied, regardless of statements made by auctioneers or staff. Auction Company is not responsible for any accidents, thefts, breakage, or sold items. Remmen Auction reserves the right to withdraw any property at any time before and during the actual sale. All sales are final once the item leaves the auction location.

Please visit our website for complete listing and photos of all items to be sold!

www.remmenauction.com

Debra Jo Remmen

Auctioneer

Phone: (503) 256-1226

Cell Phone: (503) 756-2629

e-mail: debra@remmenauction.com



Kris K. Remmen

Auctioneer/Auction Manager

Phone: (503) 256-6931

Cell Phone: (503) 757-5327

e-mail: kris@remmenauction.com



Members of: National Auctioneers Association
Oregon Auctioneers Association

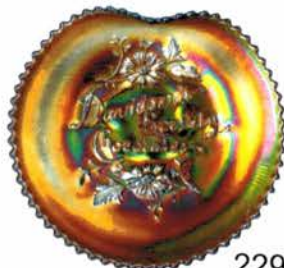
Graduate of Missouri Auction School
Graduate of Mendenhall School of Auctioneering
Licensed Auctioneers in the State of Florida
Licensed Auctioneer in the State of Ohio
Licensed Auctioneers in the Commonwealth of Virginia
Licensed Auctioneer in the State of North Carolina



422



322



229



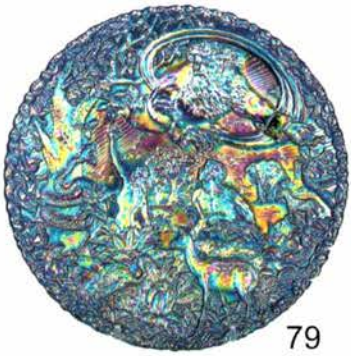
230



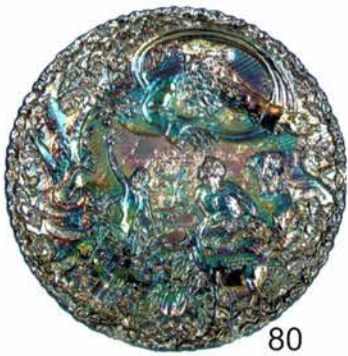
248

Day 1 - Contemporary Auction

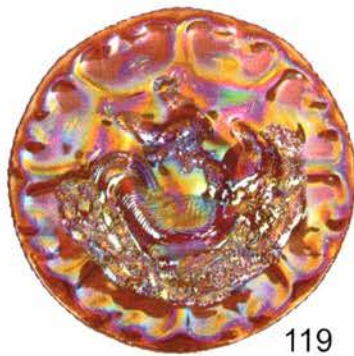
- 1 Imperial "IG Cobalt Blue Windmill 9 1/4" Plate.
- 2 Fenton Red Puritan Compote and LE Smith Pinwheel and Hobstar Compote.
- 3 Imperial Red Diamond Lace Rosebowl and Indiana Heirloom Rosebowl.
- 4 Fenton Celeste Blue Enameled Acanthus Ruffled Bowl. ICGA 1995. Signed JK Spindle
- 5 Pair of IG Azure Blue Gothic Arches Vases. (Sold 2x the Money)
- 6 Pair of Welch Art Glass, Blue and Amber Bells with Art Glass Paperweight.
- 7 Fenton Red Heavy Grape Bowl and Red IG Pansy Nappy.
- 8 Imperial Pink LIG 13 1/2" Ripple Vase.
- 9 Fenton For Levay Red Pony Ruffled Bowl. 15 of 100. 2004.
- 10 Terry Crider White Concave Almond Tumbler.
- 11 Terry Crider Red Moon & Stars Footed Tumbler.
- 12 Terry Crider White Diamond Lace Tumbler.
- 13 Terry Crider Vaseline Basketweave Tumbler.
- 14 Terry Crider White Near Cut Tumbler.
- 15 Robert Hansen Red Hobstar & Fine Cut Tumbler.
- 16 Westmoreland For Levay, Red Peacock Tail & Daisy Plate, # 447-1000 1983.
- 17 Imperial IG Aurora Jewels Male & Female Salt & Peppers and Smoke Salt & Peppers. Both Male.
- 18 Imperial IG Amber Male & Female Salt & Peppers.
- 19 Imperial IG Marigold Male & Female Salt & Peppers.
- 20 Fenton For Levay Aqua Opal Butterfly & Berry Whimsy Tumbler/Vase. Marked 53 of 67, 1980
- 21 Fenton Purple Mermaid Planter Vase.
- 22 Fenton Sapphire Opal Mermaid Planter Vase.
- 23 LIG Meadow Green Imperial Grape Milk Pitcher & Imperial Rose Covered Butter dish. (Sold 2x the Money)
- 24 Imperial IG Azure Blue Zodiac Candy Dish. Scarce
- 25 Fenton Red Grape & Cable Tobacco Jar.
- 26 Fenton Purple Grape & Cable Cracker Jar. Rose Presnik Museum 1969.
- 27 Pair of Fenton Red Atlantis Vases. (Sold 2x the Money)
- 28 Fenton Peach Opal Atlantis Vase with Spittoon Top. Made for MTL Glass 1981.
- 29 Imperial Purple 4 3/4" Zodiac Compote. Marked E. Ward Russell 1 of 12 1969 Factory Visit.
- 30 Westmoreland For Levay Blue Checkerboard Pitcher with Four Tumblers.
- 31 Westmoreland Purple High Hob Pitcher & Six Tumblers.
- 32 Dorothy Taylor Encore 1980 Wine & Roses Miniature Water Set by Smith Glass.
- 33 Fenton Red Founders Seven Piece Water Set # 1193.
- 34 Dorothy Taylor Encore Green Inverted Peacock Miniature Water Set. Mosser for Summit Glass.
- 35 Fenton For Levay Black Heavy Pineapple Pitcher & Six Tumblers. Each Piece Etched By Gary In Elliott's Presence
- 36 Four Imperial Twelve Days of Xmas Plates. 1-2-3-4.
- 37 Four Imperial Twelve Days of Xmas Plates, 5-6-7-8.
- 38 Four Imperial Twelve Days of Xmas Plates 9-10-11-12.
- 39 Fenton For Kenningston Glass Co. 1977 Amber Romeo & Juliet Plate.
- 40 ALIG Vaseline Homestead Chop Plate. Made by Summit.
- 41 LIG Pink Homestead Chop Plate. Dealers Incentive Bonus.
- 42 ALIG Vaseline Chrysanthemum Chop Plate. Made by Summit.
- 43 IG Smoke Chrysanthemum Chop Plate.
- 44 Fenton Blue HOACGA 2000 Pansy Plate.
- 45 Imperial "IG" White Chrysanthemum Chop Plate with America the Beautiful Error. Very Rare, Error on Back
- 46 Fenton Red Butterfly Candle Holder FAGCA1987.
- 47 Fenton Red Diamond & Rib Squatty JIP Vase, 1994 ICGA.
- 48 Imperial IG White & Pink 4 1/2" Swans. (Sold 2x the Money)
- 49 Imperial IG Meadow Green and Horizon Blue 4 1/2" Swans. (Sold 2x the Money)
- 50 Imperial IG Aurora Jewels and ALIG Sunburst 4 1/2" Yellow Swans. (Sold 2x the Money)
- 51 Fenton Amber Swan and Mosser Ice Blue Swan with Head Turned. (Sold 2x the Money)
- 52 Imperial IG Amber 4 1/2" Swan. Scarce
- 53 Imperial IG Red 4 1/2" Swan. Scarce
- 54 LIG Large Meadow Green Swan.
- 55 Imperial "IG" Large Marigold and Smoke Swans.
- 56 Imperial IG Red Panel & Feathers Covered Candy and LIG Ice Green Panel & Feathers Covered Candy.
- 57 Fenton HOACGA Blue 2000 & White 1998 White Hobnail Spittoons'. Room Display Awards.
- 58 Dorothy Taylor Encore, Red Kittens 1982 Miniature Basket and 1984 Aqua Stag & Holly Miniature Basket.
- 59 Fenton # 2926 Red Nut Dish and Fenton Red Stretch Compote.
- 60 Two Imperial Red Robin Mugs. One Marked ACGA 1967 Washington DC.
- 61 LIG Pink Robin Mug & Blue Moser Robin on Branch Mug.
- 62 Red Fashion Toothpick, Green Novelty Swans Toothpick and 1969 IG ACGA Aqua Teal Flute Salt Dip.
- 63 Two LE Smith White Eagle Bicentennial Tumblers and Red Bicentennial Sherbet.
- 64 Bob St. Clair Red Presidential Ford & Nixon 2 3/4" Toothpicks.
- 65 Joe St. Clair Red Indian and Red Cactus 2 1/2" Toothpick Holders.
- 66 Imperial IG Red Acanthus Sugar & Creamer.
- 67 Gibson 1984 Red 5" JIP Art Glass Vase.
- 68 Gibson Red Art Glass Sugar with Applied Handle.
- 69 Gibson Red Art Glass 6 1/4" Town Pump.
- 70 Signed Robert Hansen Red Eye Winker Footed Whimsy Vase/Spooner. 5 1/2"
- 71 Robert Hansen Red Eye Winker Tumbler.
- 72 Robert Hansen Red Eye Winker 2 1/4" Toothpick Holder.
- 73 Robert Hansen Red Inverted Strawberry 2 1/4" Toothpick Holder. Marked Near Cut
- 74 Robert Hansen Red Honeycomb Tumbler.
- 75 Robert Hansen Red Honeycomb 3 2/4" Juice Tumbler. Unsigned
- 76 Imperial "IG" Azure Blue Luster Rose Chop Plate.
- 77 Imperial "IG" Smoke Luster Rose Chop Plate.
- 78 Rare Fenton Ice Blue Opal Garden of Eden 8" "Sample" Plate.
- 79 Fenton Blue Garden of Eden 8" Plate.
- 80 Rare Fenton Purple Garden of Eden 8" "Sample" Plate..
- 81 LIG Meadow Green Loganberry 10" Vase. Rare.
- 82 Imperial "IG" White Loganberry 10" Vase.
- 83 Rare Imperial IG For Levay Marigold Tiger Lilly Pitcher and Six Tumblers.
- 84 Scarce Imperial "IG" For Levay White Tiger lily Pitcher.
- 85 LIG Meadow Green Tiger Lily Pitcher & Six Tumblers.
- 86 Rare Imperial Rose Presnik 5" Amber Daisy Vase.
- 87 LIG Meadow Green Imperial Rose Fernery.
- 88 Imperial Marigold Fashion 4" Compote. 1 of 56, 1966 ACGA Luncheon.
- 89 Two Imperial LIG Acanthus Meadow Green & Red Compotes.
- 90 Imperial 1973 ACGA Red Natural Bridge Dresser Tray and NCCC Wetzel Ice Green Golden Gate Bridge Plate.



79



80



119



170



27



156



70



123



28



160



165



35



112



102



136



30



148



141



147



179



124



69

Please visit our website for complete listing and photos of all items to be sold!
www.remmenauction.com

- 91 Fenton HOACGA 1977 Red, 2001 Vaseline Opal & 2008 Emerald Green Grape & Cable Hatpin Holders.
- 92 Pair of Fenton Woodsland Whimsy Commemorative Plates. 2002 Vaseline Handgrip and 2002 Black Amethyst Handgrip.
- 93 Pair of Woodsland Commemorative Favrene & Sapphire Pinecone Bowls 2006 and 2008.
- 94 Pair of Fenton Woodsland Commemorative Plates. Black Amethyst 2002 Plate and Red 2001 JIP Plate.
- 95 Fenton HOACGA 1976 Bi-Centennial Good Luck Whiskey Decanter and Six Shot Glasses.
- 96 Fenton Celeste Blue Lincoln Inn Pitcher & Six Tumblers. 40th Anniversary.
- 97 Fenton "Lincoln Inn" Black Raven Pitcher & Six Tumblers. Rare
- 98 Imperial & Westmoreland Seven Piece America the Beautiful Set. For E. Ward Russell
- 99 Imperial Black Amethyst Nations Capital Plate. 1964-1969. For E. Ward Russell
- 100 Imperial IG Aurora Jewels Rams Head Three Piece Console Bowl Set.
- 101 Set of Three Imperial IG 3n1 Toothpicks. Purple, Helios Green, Red Slag. (Sold 3x the Money)
- 102 Set of Four Imperial IG 3n1 Toothpicks. Azure Blue, Meadow Green, Two Sunburst Yellow,. (Sold 4x the Money)
- 103 Imperial Glass IG Azure Blue Three and One Cracker Jar. Very Rare
- 104 Fenton 1995 Sea Mist Green Iridized Hand Painted Ruffled Vase. 9 1/2" Tall Signed
- 105 Imperial IG Red Roses in the Snow Candy Box with Lid.
- 106 Fenton Red Heavy Pineapple Compote. FACGA 3 3/4" Tall
- 107 Fenton Red Daffodil 5 1/2" Ruffled Vase.
- 108 Fenton Red HOACGA Miniature Good Luck Mug and Red 1974 Tumbler.
- 109 Joe St. Clair Red Grape & Cable Tumbler & Red Grape & Cable Whimsy From Tumbler.
- 110 Fenton Red Poppy Kerosene Lamp. In Memory of Rose Presznik.
- 111 Amethyst Baseball Hall of Fame, Babe Ruth Stars & Stripes 1936 Hat & Enameled Tumbler. Enameled Tumbler Maker Unknown
- 112 Fenton For Levay Purple Hobnail Seven Piece Water Set.
- 113 Fenton Blue Singleton Bailey 14" Swung Hobnail Vase.
- 114 Fenton For Levay Aqua Opal Hobnail Seven Piece Water Set.
- 115 Mosser for Mimi Electric Blue Farmyard Ruffled Bowl.
- 116 Fenton for Mimi Electric Purple Farmyard Ruffled Bowl.
- 117 Fenton for MIMI Marigold on Amberina Farmyard Ruffled Bowl.
- 118 Fenton for Mimi Electric Purple Farm Yard Chop Plate # 119.
- 119 Fenton for Mimi Marigold on Amberina 11" Farmyard Chop Plate.
- 120 LE Smith for Levay Persimmon Dancing Ladies Planter. Rare.
- 121 Fenton Red HOACGA 1978 Good Luck Corn Vase.
- 122 Fenton Red 1977 ICGA Town Pump.
- 123 Fenton Green Opal Frolicking Bears Ruffled Hat Shaped Whimsy ICGA 1998 Room Display award.
- 124 Fenton Red Frolicking Bears Whimsy Cream Pitcher. 1982 ACGA.
- 125 Fenton Green Opal Frolicking Bears Spittoon. ICGA 1998.
- 126 Fenton Red Frolicking Bears 2002 ICGA JIP Vase.
- 127 Fenton Emerald Green Frolicking Bears JIP Vase. 2003 ICGA.
- 128 Fenton Red Seacoast Cuspidor. 1984 ACGA.
- 129 Fenton Lavender Seacoast Spittoon. 2000 ACGA.
- 130 Imperial for Levay Rare Marigold Dolphin Candlesticks.
- 131 Joe St Clair Red Elks Paperweight.
- 132 Set of Four A.C.E. Red Emu Coasters. South Australia 1990.
- 133 Fenton Electric Blue Peacock Garden Vase.
- 134 Rare Fenton Red Peacock Garden Vase.
- 135 Fenton Amethyst Peacock Garden Vase.
- 136 Fenton Emerald Green Peacock Garden Vase.
- 137 Fenton for Singleton Bailey Chocolate Carnival 8" Peacock Garden Vase.
- 138 Five Boyd Chocolate Carnival Figurines, Clown, Doll, Mouse Taxi and Tractor.
- 139 Fenton Sapphire Whale. 2007 Woodsland Commemorative in Honor of Frank Fenton. One of 100
- 140 Imperial LIG Meadow Green #457 Political Elephant and #456 Donkey. (Sold 2x the Money)
- 141 Smith for Cherish Glass Works. Carol's Sure Win Sapphire 5" Horse Vase.
- 142 Fenton For Bittersweet Red Swan Pulling Shell Toothpick Holder. 4 3/4"
- 143 Robert Hansen Electric Blue 4" Frog.
- 144 Robert Hansen Electric Blue 5" Turtle.
- 145 Joe St Clair Green 4 1/2" Owl.
- 146 Dagenhart Red Owl Standing on Books Figurine. 3" tall
- 147 Robert Hansen Red Rabbit 3 1/2" Toothpick Holder.
- 148 Robert Hansen Sapphire Owl 2 1/2" Toothpick Holder.
- 149 Fenton For Levay Red Cactus Gentlemen's Spittoon.
- 150 Fenton For Levay Red Cactus 10" Basket Vase.
- 151 Fenton For Levay Red Cactus Single Crimped PC Banana Basket.
- 152 Fenton For Levay Red Cactus Double Crimped JIP Vase.
- 153 Fenton For Levay Red Cactus Ladies Cuspidor.
- 154 Fenton For Levay Red Cactus 9" Swung Vase.
- 155 Fenton For Levay Red Cactus Toothpick.
- 156 Fenton For Levay Red Cactus Covered Cracker Jar.
- 157 Fenton For Levay Red Cactus Covered Sugar & Creamer Set.
- 158 Rare Fenton For Levay Red Cactus Whimsy From Men's Spittoon with Two Sides and CRE.
- 159 Fenton For Levay Red Cactus 6" Footed Double Crimped Compote.
- 160 Fenton For Levay Red Cactus Seven Piece Water Set. Goblets are 10".
- 161 Fenton Aqua Opal Cactus Goblet.
- 162 Fenton Aqua Opal Cactus Pitcher.
- 163 Six Imperial Red Bicentennial Goblets. Marked E. Ward Russell.
- 164 Imperial "IG" Verde Green Robin Pitcher and Six Tumblers. Scarce Color
- 165 Imperial "IG" Red Robin Seven Piece Water Set. Scarce Color
- 166 Imperial IG Azure Blue Field Flower Pitcher and Six Tumblers. Scarce Color
- 167 ALIG Yellow Sunburst Luster Rose Pitcher and Six Tumblers'. Very Rare, Imperial's Last Year in Production
- 168 Fenton Red Holly Plate. Frank Fenton 85th Birthday, 12-1-2000.
- 169 Fenton 1991 Red Peacock & Dahlia 6 1/2" Plate & Red Good Luck 1973-1993 Plate.
- 170 Fenton For Levay Red Good Luck with Butterfly Chop Plate.
- 171 are Imperial IG White Storybook Mug. Iridized by Terry Crider.
- 172 Rare Imperial IG Amber Story Book Mug..
- 173 Imperial IG Meadow Green & Azure Blue Story Book Mugs. (Sold 2x the Money)
- 174 Scarce imperial IG Amber Story Book Mug. Marked E. Ward Russell #2 Nixon Agnew.
- 175 Imperial IG Aurora Jewels Story Book Mug and ALIG Sunburst Yellow Story Book Mug.
- 176 Imperial IG Amber Story Book Mug. Marked E. Ward Russell #1. Rare!
- 177 Imperial IG Helios Green Story Book Mug. Marked #1 E. Ward Russell. Rare!
- 178 Imperial IG Red Story Book. Marked #1 E. Ward Russell. Rare!
- 179 Rare Imperial IG Ultra Blue Sample Storybook Mug. One of Twenty.. Marked #1, E. Ward Russell
- 180 Fenton Red Verlys ICS Fish Bowl. 8 3/4"

- 181 Imperial IG Red Double Deuce 9" Ftd Bowl.
- 182 Imperial IG Red Black Eyed Susan 8 1/2" Bowl with Open Edge.
- 183 Imperial IG Red Acanthus 3" Candle Holders.
- 184 Imperial IG Red Footed Acanthus Bowl with Sides Straight Up. 8 1/2" x 5 3/4"
- 185 Imperial IG Red Acanthus Covered Candy Dish and 7" Three Toed Bowl. (Sold 2x the Money)
- 186 Imperial IG Red Acanthus Four Footed, 8 3/4" Bowl.
- 187 Imperial IG White Pansy Pickle Dish.
- 188 Imperial IG Red and Amber Rose 8" Ruffled & Footed Bowls. (Sold 2x the Money)
- 189 Imperial IG Red 5 1/2" Sunflower Vase, IG Aurora Jewels 5" Sun Dial Vase and Purple Westmoreland 7" Lilly of the Valley Vase.
- 190 Scarce Imperial "IG" Smoke Aloha Tumbler and Marigold Bamboo Tumbler.. (Sold 2x the Money)

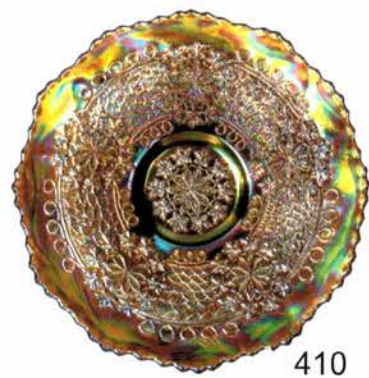
- 191 Two Rare Imperial "IG" Marigold Colonial Cabin Tumblers. (Sold 2x the Money)
- 192 Three SCGS 1964-1968 Inverted Feather & Fan Tumblers. Red Blue & Celeste.. (Sold 3x the Money)
- 193 Four Imperial IG Red Acanthus Mugs. Scarce Shape.
- 194 Westmoreland for Levay Blue Checkerboard Tumbler & Imperial ACGA 1968 Dayton Ohio Ultra Blue In God & Home Tumbler.
- 195 Two Imperial IG "Rose Presnik Museum" Eagle Mugs. Smoke & Celeste Blue
- 196 Imperial "IG" Ultra Blue 474 Tumbler . Bottom has 1977 New Spirit & Peanut Etched in Honor of President Carter.
- 197 Fenton Marigold Cactus and St Clair White Cactus Tumblers.
- 198 Scarce Imperial for Levay White Tiger Lily Tumbler. Super Frosty.
- 199 Surprise !!!.
- 200 Surprise !!!.

Day 2 - Vintage Auction

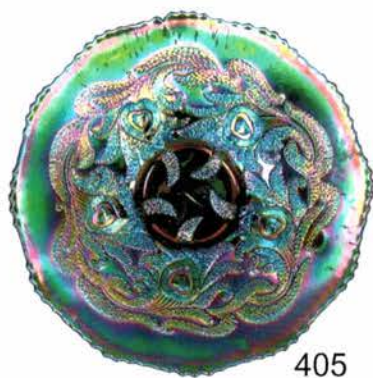
- 201 Dugan Peach Opal Leaf Rays Ruffled Nappy.
- 202 Dugan Electric Purple Ruffled Leaf Rays Nappy.
- 203 Dugan White & Marigold Constellation Compotes. (Sold Choice)
- 204 Dugan Electric Purple Constellation Compote. Has Straw Mark Around Stem. IT IS NOT BROKEN
- 205 Imperial Electric Purple Scroll Embossed 3 1/4" Miniature Compote.
- 206 Dugan Electric Purple Grape Delight Nut Bowl & Grape Delight Frosty White Nut Bowl. (Sold Choice). White Nut Bowl has small burst bubble
- 207 Imperial Electric Purple & Lavender Scroll Embossed 5 1/2" Sauces. (Sold 2x the Money). Covered with Blue Iridescence
- 208 Fenton Vaseline Holly Goblet Shape Compote and Aqua Holly Ruffled Compote. (Sold Choice)
- 209 Dugan Ice Green Windflower Nappy. Has tiny nick on edge
- 210 Millersburg Green Primrose Ruffled Bowl. Real Pretty Iridescence
- 211 Millersburg Amethyst Primrose 9 1/2" Ruffled Bowl with Radium Iridescence.
- 212 Millersburg Marigold Primrose Ruffled Bowl.
- 213 Beautiful Northwood Green Star & David & Bows Ruffled Bowl. Hard to Find Good in Green
- 214 Northwood Electric Purple Star of David and Bows Ruffled Bowl. Super Nice
- 215 Imperial Dark Marigold Heavy Grape Punch Bowl and Base with Two Cups. Nice, Dark and Pretty
- 216 Imperial Electric Purple Diamond Lace Pitcher and Tumbler.
- 217 Fenton Marigold Enameled Lotus Interior Drape Pitcher & Six Tumblers. Nice Set
- 218 Imperial Purple Octagon Milk Pitcher.
- 219 Fenton Green Butterfly & Fern Tumbler with One Tumbler. Tumbler is blue but has green iridescence
- 220 Northwood Green Dandelion Tankard. Super Tankard
- 221 Fenton Reverse Amberina Opal Open Edge Basket with Two Sides Up. Neat Basket
- 222 Fenton Red Open Edge Basket with Two Sides Up.
- 223 Fenton Celeste Blue Two Row Open Edge Square Shaped Basket. 6"
- 224 Fenton Red Open Edge Jip Basket.
- 225 Fenton Dark Marigold Kittens Ruffled Bowl.
- 226 Fenton Dark Marigold Kittens Cup & Saucer.
- 227 Fenton Dark Marigold Kittens Toothpick Holder.
- 228 Fenton Amethyst Fern Brand Chocolates 6 1/4" Plate. Super Iridescence
- 229 Fenton Amethyst Davidson's Society Chocolates Handgrip Plate. Great Iridescence
- 230 Fenton Amethyst Norris N. Smith Ruffled Bowl. Another Beauty

- 231 Fenton White Panels 11" Vase.
- 232 Fenton Ice Green Panels 13 1/2" Vase.
- 233 Fenton Celeste Blue Panels 12" Vase.
- 234 Fenton Marigold Long Thumbprint & Hobnail 12 1/2" Vase. Neat Top Treatment
- 235 Fenton Blue Spearhead & Rib 15" Vase.
- 236 Imperial Propeller 7 1/2" Vase.
- 237 Jain Marigold Elephant 8 3/4" Vase & 10" Fish Vase. (Sold 2x the Money)
- 238 Dugan Electric Purple Lined Lattice 9 1/2" Vase.
- 239 Dugan White /Sun Purpled Lined Lattice 10 1/2" Vase.
- 240 Marigold Seaweed Oil Lamp.
- 241 Northwood Electric Blue Grape & Gothic Arches Master Berry Bowl with one Sauce.
- 242 Northwood Marigold Harvest Poppy Compote.
- 243 Northwood Dark Ice Blue Fine Cut and Roses Rosebowl with Fancy Interior. Has Great Feet.
- 244 Scarce Northwood Green Peacock at the Fountain Master Berry Bowl.
- 245 Northwood Purple Peacock at the Fountain Master Berry Bowl.
- 246 Northwood Aqua Opal Drapery Rosebowl.
- 247 Northwood Electric Blue Drapery Rosebowl.
- 248 Northwood Sapphire Round Bushel Basket. Looks Sapphire
- 249 Northwood White Poppy Show Plate.
- 250 Northwood Electric Purple Rose Show Plate. Beautiful Iridescence
- 251 Millersburg Green Fleur de Lis 9 1/2" ICS Bowl. Pretty with Satin iridescence
- 252 Gorgeous Millersburg Amethyst Fleur de Lis 9 3/4" ICS Bowl. Wonderful Radium Iridescence
- 253 Millersburg Marigold Rosalind 10 1/2" Ruffled Bowl.
- 254 Millersburg Amethyst Rosalind 10" ICS Bowl.
- 255 Scarce Millersburg Blackberry Wreath 6" Plate. Gorgeous
- 256 Millersburg Marigold 10" Seaweed 3/1 Edge Bowl. Really Nice iridescence
- 257 Millersburg Green Peacock at Urn Large Compote. Tiny Flake on the base
- 258 Millersburg Blue Peacocks Ruffled Sauce. Scarce and Pretty
- 259 Millersburg Green Peacock at Urn Mystery 9" Ruffled Bowl.
- 260 Beautiful Millersburg Vaseline Acorn Compote. Radium Iridescence, Beautiful Yellow Base Glass Color
- 261 Dugan White & Peach Opal Fishscale & Beads Ruffled Plates. (Sold Choice)
- 262 Dugan Peach Opal Petal & Fan 10" Ruffled Bowl. Very Pretty
- 263 Dugan Electric Purple Petal and Fan 6" Ruffled Sauce.
- 264 Dugan Peach Opal Petal & Fan 6" Crimped Edge Plate.

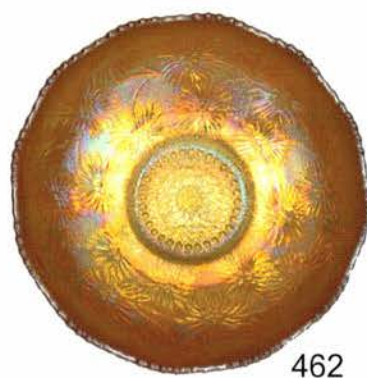
- 265 Dugan Pastel Marigold Petal & Fan 10" Ruffled Bowl. Incredible Iridescence. Covered with Color
- 266 Dugan Electric Purple Petal and Fan 10 1/2" Ruffled Bowl.
- 267 Fenton Celeste Blue Stippled Rays Footed Compote.
- 268 Dugan Peach Opal Border Plant CRE Nut Bowl.
- 269 Dugan Peach Opal Border Plants Bowl with 3/1 Edge.
- 270 Fenton Celeste Blue Wide Panel Salver. 7" wide x 2 3/4" Tall
- 271 Imperial Marigold Windmill Dresser Tray.
- 272 Imperial Amber Pansy Dresser Tray. Very Flat
- 273 Imperial Smoke Floral Optic Footed Bowl. Super Iridescence
- 274 Imperial Red Floral and Optic Footed Bowl.
- 275 Imperial Smoke Three n One Master ICS Bowl Including Matching Sauce. Master Bowl is Very Rare
- 276 Scarce Imperial Marigold Three and One 7" Plate and Marigold Star & File 6 1/4" Plate. (Sold Choice)
- 277 Scarce Imperial Marigold Three in One Rosebowl.
- 278 Imperial Electric Purple and Helios Green Three in One Ruffled 6" Sauces.
- 279 Imperial Red Chesterfield Creamer & Sugar.
- 280 Electric Purple Imperial Grape Water Carafe.
- 281 Fenton Amethyst Birds & Cherries' Bon Bon with Superb Iridescence.
- 282 Fenton Dark Marigold Holly ICS Bowl.
- 283 Fenton Electric Green Holly Ruffled Bowl. A Real Beauty
- 284 Fenton White Holly Ruffled Bowl. Outstanding!
- 285 Fenton Blue Holly Ruffled Bowl.
- 286 Fenton Amethyst Holly ICS Bowl.
- 287 Fenton Marigold Captive Rose Ruffled Bowl.
- 288 Fenton Green Captive Rose Bowl with 3/1 Edge. Beautiful Iridescence
- 289 Fenton Blue Captive Rose 9" Plate.
- 290 Fenton Green Captive Rose Plate. Great Plate
- 291 US Glass White Cosmos & Cane 8 1/4" Footed Plate.
- 292 Scarce US Glass Marigold Rosebowl with Headdress Interior.
- 293 US Glass White Cosmos & Cane 10" Ruffled Bowl/ Plate.
- 294 US Glass Electric Purple Cosmos and Cane 6 3/4" Compote. Scarce Color
- 295 US Glass White Cosmos and Cane Butter Dish, Spooner and Covered Sugar. (Sold Choice)
- 296 Us Glass White Square Cosmos & Cane 5" Bowl.
- 297 US Glass Cosmos & Cane Square Honey Amber 5" Bowl.
- 298 US Glass Dark Marigold Cosmos & Cane Volcano Shaped 5 1/2" Rosebowl. Rare & Beautiful
- 299 Northwood Marigold Embroidered Mums Ruffled Bowl.
- 300 Northwood Sapphire Grape & Cable Stippled Plate with Ribbed Exterior. Looks Sapphire
- 301 Northwood Amethyst Grape & Cable 8" Hand Grip Plate and 6 1/4" Handgrip Plate. (Sold 2x the Money)
- 302 Northwood Ice Blue Grape & Cable Stippled PCE Bowl. Nice and Pastel
- 303 Northwood Green Grape & Cable Plate with Plain Exterior.
- 304 Northwood White Grape & Cable 10 1/2" Master ICS Bowl.
- 305 Northwood Marigold Greek Key Plate. Real Nice
- 306 Northwood Marigold Wishbone Footed Plate.
- 307 Northwood White Wishbone Footed Ruffled Bowl. Super Pretty
- 308 Northwood Ice Green Wishbone Footed Ruffled Bowl. Another Nice One
- 309 Northwood Ice Blue Wishbone Footed Ruffled Bowl. Lots of Pink Iridescence
- 310 Electric Purple Imperial Paper Weight. The Best!
- 311 Imperial Purple Hobstar Covered Butter Dish.
- 312 Sowerby Marigold Hen on Nest. This Piece s Beautiful!
- 313 US Glass Marigold Pineapple & Fan Three Piece Tumble- Up.
- 314 Scarce Brockwitz Prism & Star Decanter Set with Six Glasses and Undertray. Glasses Marked "Germany" with a Number
- 315 Very Rare Green Cristalerias C & R Ashtray. Possible the only one in green!. Has tiny Flake on Rim
- 316 Cristalerias Rigolleau Blue Beetle Ashtray. Really, Really, Pretty
- 317 Rare Marigold Sacic Ashtray.
- 318 Consolidated Marigold on Moonstone Lacy Dewdrop Lamp Shade.
- 319 Fostoria Ice Green Brocaded Palms Planter.
- 320 Dugan Celeste Blue Coin Spot Compote. I Love Celeste
- 321 Dugan Pastel Marigold Petal & Fan 10 1/2" ICS. OUTSTANDING!!!!!!
- 322 Dugan Electric Purple Petal & Fan 6" Crimped Edge Plate.
- 323 Dugan Electric Purple Flower & Frames Dome Footed Ruffled Bowl.
- 324 Dugan Electric Purple Border Plant Hand Grip Dome Footed Plate. Covered with Blue Iridescence
- 325 Dugan Electric Purple Butterfly & Tulip Ruffled Footed Bowl. 11"
- 326 Beautiful Dugan Peach Opal Round Up Low Ruffled Bowl.
- 327 Dugan Amethyst Round Up Plate. Really Pretty
- 328 Dugan Ice Green Pony Ruffled Bowl.. Gorgeous with Great Mold Strike
- 329 Dugan Amethyst Pony Ruffled Bowl. Pretty
- 330 Beautiful Imperial Pastel Smoke Shell & Sand Plate.
- 331 Imperial Dark Marigold Shell & Sand Ruffled Bowl.
- 332 Imperial Electric Purple Shell & Sand ICS Bowl. Imperial at its Best
- 333 Scarce Imperial Marigold Scroll Embossed Plate. I have seen a lot more Purple
- 334 Imperial Electric Purple Scroll Embossed Plate.
- 335 Imperial Electric Purple Star of David Ruffled Bowl.
- 336 Imperial Lavender Cobblestones Ruffled Bowl. Super Bright Electric Iridescence
- 337 Scarce Imperial Marigold Cobblestone Ruffled Bowl. Super Pretty! Has 3 Tiny Nicks on Rim Edge
- 338 Fenton Amethyst Concord Plate. Very Pretty
- 339 Fenton Amethyst Concord Ruffled Bowl.
- 340 Gorgeous Fenton Pastel Marigold Orange Tree 12" Whimsied Centerpiece Footed Bowl. Only One Known in this Color! And not many others around
- 341 Fenton White Hand Enameled Peacock at Urn Ruffled Bowl. Really Cool Piece
- 342 Fenton Pumpkin Marigold Peacock at Urn 9" Plate. Super
- 343 Fenton White Peacock at Urn Plate. If you Like White, This is it!
- 344 Fenton Green Dragon and Strawberry Ruffled Bowl.
- 345 Fenton Blue Opal Ruffled Holly Bowl. Beautiful
- 346 Fenton Red Holly Ruffled Bowl. Beautiful Red Iridescence. Has Tiny Flake on inside of Bowl
- 347 Fenton Red Vintage 8 1/2" Ruffled Bowl.
- 348 Fenton Red Orange Tree Bowl ICS. Super Pretty
- 349 Fenton Red Little Flowers 10" ICS Bowl. Great Red Base Glass
- 350 Fenton Red Chrysanthemum Ruffled Bowl. Super Red Base Glass
- 351 Fenton Red Waterlily Footed Sauce.
- 352 Northwood Electric Blue Peacock at Urn Sauce. Great Iridescence
- 353 Northwood White Peacock at Urn Sauce.
- 354 Northwood Pastel Marigold Peacock at Urn Sauce. Super Blue Iridescence. Gorgeous! Birds are covered with iridescence!
- 355 Northwood Ice Green Peacock at Urn Sauce.
- 356 Northwood Ice Blue Peacock at Urn Sauce.
- 357 Northwood Green Peacock at Urn Sauce. Very Nice
- 358 Screaming Beautiful Northwood Pastel Marigold Peacock at Urn Master ICS Bowl. Birds are covered with Color also!!!



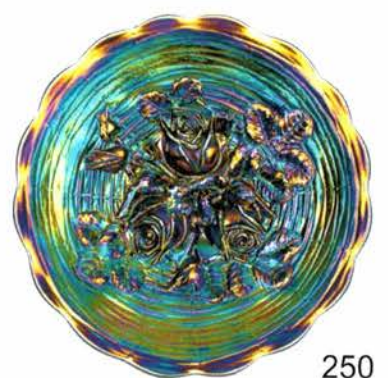
410



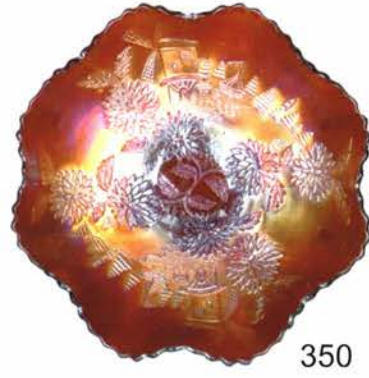
405



462



250



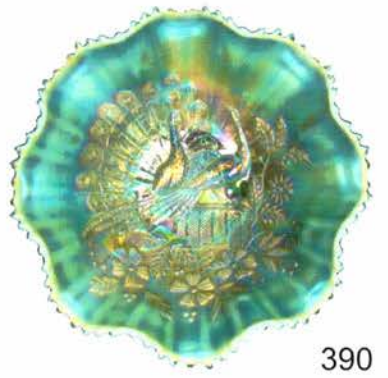
350



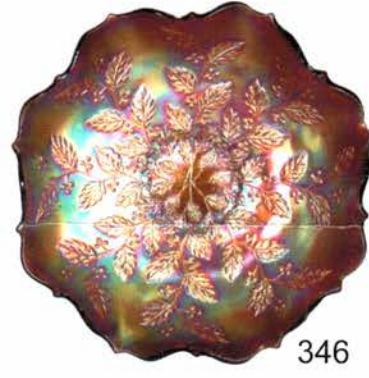
359



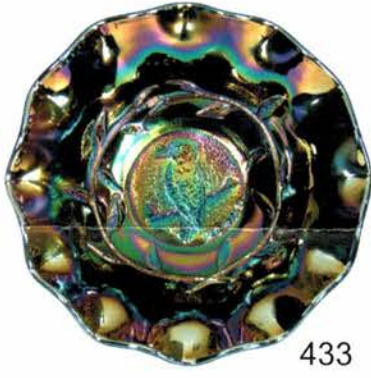
444



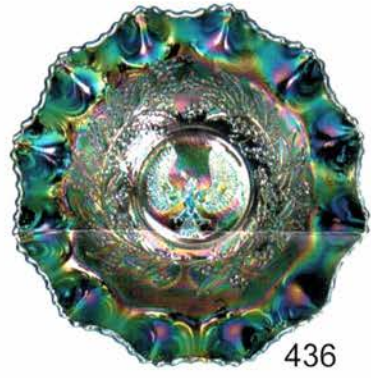
390



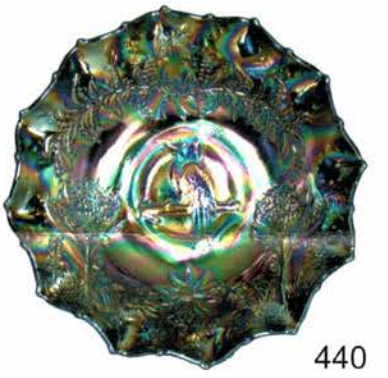
346



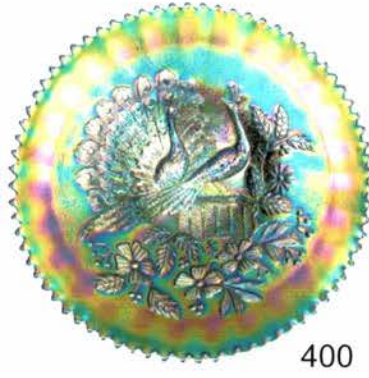
433



436



440



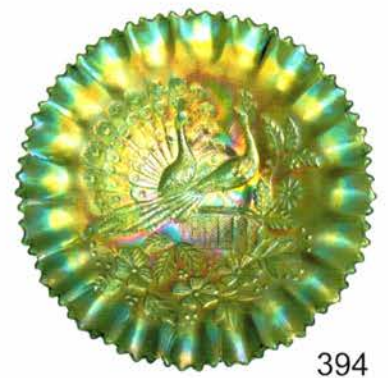
400



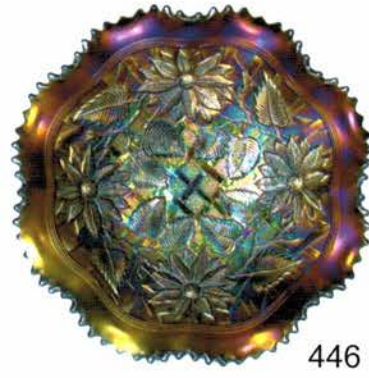
396



398



394



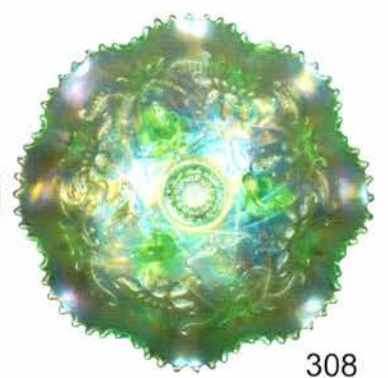
446



328



329



308

Please visit our website for complete listing and photos of all items to be sold!

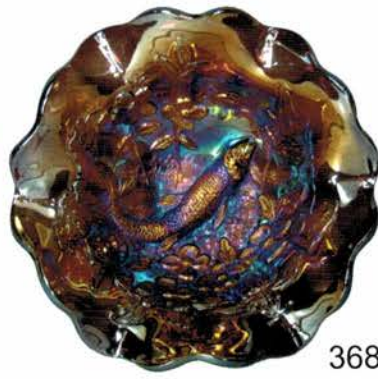
www.remmenauction.com



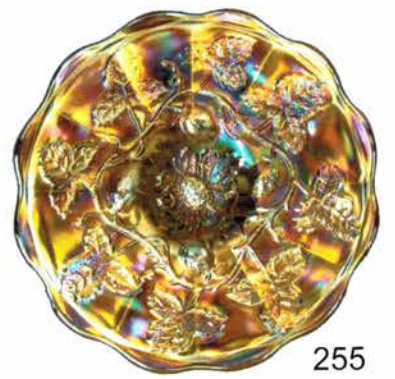
252



367



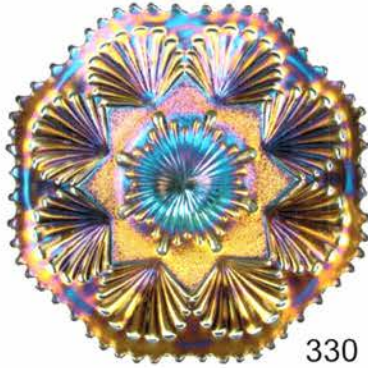
368



255



355



330



334



275



321



323



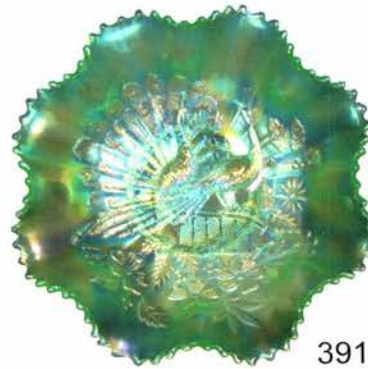
327



324



303



391



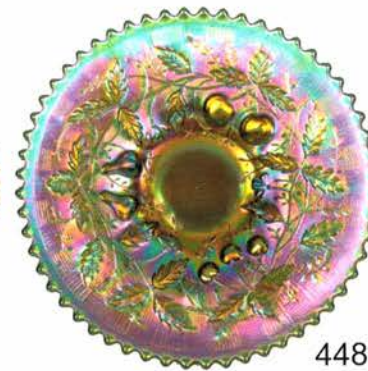
478



289



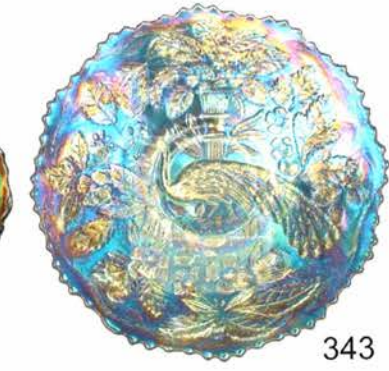
480



448



339



343

- 359 Northwood Ice Green Peacock at Urn Master ICS Bowl. Lovely
- 360 Northwood Ice Blue Peacock at Urn Master ICS Bowl. Super Pretty
- 361 Northwood White Peacock at Urn Master ICS Bowl. Lots of Color
- 362 Gorgeous Millersburg Amethyst Pipe Humidor. Radium Iridescence
- 363 Millersburg Marigold Shotgun Bowl with 3/1 Edge. Radium iridescence
- 364 Millersburg Amethyst Shotgun Bowl with 3/1 Edge. Radium Iridescence
- 365 Millersburg Green Shotgun Bowl with 3/1 Edge. Radium Iridescence
- 366 Incredible Millersburg Vaseline Square Fleur de Lis Footed Bowl. Outstanding Iridescence. Has one nick on saw tooth edge base. Who cares with a bowl like this
- 367 Millersburg Green Trout & Fly 3/1 Edge Bowl. Gorgeous Bowl with Radium Iridescence
- 368 Millersburg Purple Radium Big Fish Ruffled ICS Bowl. Ultimate and Spectacular
- 369 Millersburg Marigold Radium Big Fish ICE Bowl. Outstanding Beautiful Radium Iridescence
- 370 Only One Known! Millersburg Vaseline Square Many Stars Bowl with Crimped Edge. Radium and Beautiful * Denotes Reserve
- 371 Northwood Electric Blue Thin Rib 11 3/4".
- 372 Northwood Emerald Green 10 1/2" Thin Rib Vase.
- 373 Northwood Sapphire Opal Four Pillars Vase.
- 374 Beautiful Imperial Marigold Gothic Arches Vase. 10 1/2" with 7 1/2" Opening
- 375 Northwood Electric Purple Tornado Vase.
- 376 Fenton Red Fine Rib 9 1/4" Vase. Looks Red Also
- 377 Dugan Electric Purple Big Basketweave 11 1/2" Vase.
- 378 Northwood Electric Blue Tree Trunk 9 3/4" Vase.
- 379 Imperial Marigold Ripple 15" Funeral Vase. Beautiful Color. Has 4 3/4" Base
- 380 Fenton Electric Blue Rustic 16 1/2" Funeral Vase. Super Pretty, 5" Base
- 381 Dugan Electric Purple Wishbone & Spades 6 1/2" Plate.
- 382 Dugan Marigold Question Marks Footed Plate.
- 383 Dugan White Question Marks Footed Plate. Has Radium Iridescence
- 384 Dugan Peach Opal Soutache 9" Footed Plate with CRE.
- 385 Dugan Electric Purple Daisy Web Hat with Two Sides Up and CRE. I Luv These Hats
- 386 Beautiful Dugan Peach Opal Ski Star Hand Grip 9" Plate.
- 387 Dugan Peach Opal Ski Star 8" Tri- Corner Bowl. Dark Marigold Over Opal
- 388 Dugan White Persian Gardens 11 1/2" Master ICS Bowl.
- 389 Dugan Electric Blue Double Stem Rose Dome Footed Bowl.
- 390 Northwood Aqua Opal Peacocks Bowl. Pastel Iridescence & Very Pretty
- 391 Northwood Ice Green Peacocks Ruffled Bowl.
- 392 Northwood Smokey Lavender Peacocks Ruffled Bowl.
- 393 Northwood Marigold Peacocks PCE Bowl.
- 394 Northwood Green Peacocks PCE Bowl with Ribbed Exterior.
- 395 Northwood Ice Green Peacocks Plate. Beautiful Mirror Finish with Plain Back.
- 396 Northwood Electric Blue Peacocks Plate with Ribbed Exterior.
- 397 Northwood Green Peacocks Plate with Ribbed Exterior.
- 398 Northwood Pastel Marigold Stippled Peacocks Plate with Ribbed Exterior.
- 399 Northwood White Peacock Plate with Plain Exterior.
- 400 Northwood Reninger Blue Peacocks Stippled Plate with Ribbed Exterior.
- 401 Fenton Reverse Amberina Opal Blackberry Spray Square Shaped Hat.
- 402 Beautiful Fenton Aqua Opal Blackberry Spray Ruffled Hat.
- 403 Fenton Reverse Amberina Opal Blackberry Spray Ruffled Hat. Gorgeous!
- 404 Fenton Amethyst and Blue Blackberry Spray Ruffled Hats. (Sold Choice)
- 405 Gorgeous Fenton Blue Heart & Vine Plate. Stretchy Iridescence
- 406 Fenton Celeste Blue Blackberry Open Edge Two Row Basket Ruffled. Super Cool and Pretty
- 407 Fenton Blue Orange Tree Plate with Radium Iridescence.
- 408 Fenton White Orange Tree Plate with Tree Trunk Center. Very Nice
- 409 Fenton Pastel Marigold Leaf Chain 9" Plate. Beautiful
- 410 Beautiful Fenton Amethyst Leaf Chain 9" Plate. Very Scarce Color and Real Pretty
- 411 Imperial Lavender Parlor Panels 12" Vase. Very Light Base Color and Beautiful
- 412 Imperial Electric Purple 9 1/4" Beaded Bullseye Vase.
- 413 Imperial Smoke Little Barrel.
- 414 Imperial Amber Loganberry Vase with Flattened Flared Top. Neat top on a Pretty Piece
- 415 Imperial Teal 11" Ripple Vase.
- 416 Imperial Electric Purple Ripple 8 3/4" Vase with 5 1/2" Opening.
- 417 Imperial Smoke Ripple 12" Vase.
- 418 Imperial Blue 9 3/4" Ripple Vase. Great Blue Base Glass Color
- 419 Imperial Marigold Morning Glory Funeral 18 1/2" Vase. Great Iridescence and Scarce
- 420 Millersburg Green Cosmos ICS 5 3/4" Sauce. Tiny Nick on Edge
- 421 Millersburg Amethyst Peacock 5 1/2" ICS Sauce. Beautiful Radium Iridescence
- 422 Millersburg Emerald Green Strawberry 6" Ruffled Sauce. Super Radium Iridescence
- 423 Millersburg Amethyst Leaf & Little Flowers Compote.
- 424 Gorgeous Millersburg Marigold Nesting Swan Ruffled Bowl. Beautiful Pastel Iridescence
- 425 Millersburg Green Holly Whirl 10" Ruffled Bowl with Blue Iridescence.
- 426 Millersburg Amethyst Blackberry Wreath 5 1/2" ICS Sauce. Beautiful Radium Iridescence
- 427 Millersburg Marigold Blackberry Wreath 7 3/4" Ruffled Bowl. Satin Iridescence
- 428 Millersburg Amethyst Blackberry Wreath 10" Bowl with 3/1 Edge.
- 429 Millersburg Green Blackberry Wreath Bowl 8 1/2" with 3/1 Edge.
- 430 Rare Imperial Three and One Tri-Cornered Bowl.
- 431 Marked Australian Black Amethyst and Marigold Flower Frogs. (Sold 2x the Money)
- 432 Australian Black Amethyst 5 1/4" Kangaroo Ruffled Sauce. Beautiful!
- 433 Australian Black Amethyst 5 1/4" Kingfisher Ruffled Sauce. Super
- 434 Australian Black Amethyst 5 1/4" Magpie Ruffled Sauce. Wonderful iridescence
- 435 Australian Black Amethyst 5 1/2" Swan Ruffled Sauce. Beautiful
- 436 Fantastic Australian Black Amethyst Shrike or Thunderbird 5 1/4" Sauce. \The Best!
- 437 Australian Black Amethyst Gum Tips 9" Vase with Lilly Top.
- 438 Australian Black Amethyst Magpie 10" Ruffled Bowl. Great Iridescence
- 439 Australian Black Amethyst Swan 10" Ruffled Bowl.
- 440 Australian Black Amethyst Kookaburra 9" Ruffled Bowl. Covered with Color
- 441 Northwood Reninger Blue Good Luck Stippled PCE Bowl. Ribbed Exterior

- 442 Super Northwood Pastel Marigold Stippled Good Luck Ruffled Bowl. Covered with Pinks and Blues. Ribbed Exterior
- 443 Incredible Northwood Horehound Good Luck Ruffled Bowl with Ribbed Exterior.
- 444 Northwood Electric Blue Good Luck Ruffled Bowl with Ribbed Exterior.
- 445 Northwood Green Good Luck Plate with Basketweave Exterior.
- 446 Northwood Purple Lattice & Poinsettia Ruffled Bowl.
- 447 Northwood Ice Green Fruit & Flowers 9" Ruffled Bowl. Pretty Iridescence
- 448 Northwood Green Fruits and Flowers 8" Plate. Light Scuffing on Fruit
- 449 Northwood White Nippon PCE Bowl. Very Nice
- 450 Northwood Super Electric Purple Nippon PCE Bowl. Screamer, Covered in Blues
- 451 Northwood Three Fruits Pastel Honey Amber Ruffled Bowl with Plain Back. WOW
- 452 Northwood Green Stippled Three Fruits PCE Bowl. Light scuffing on fruit. Scarce Color
- 453 Northwood Electric Blue and Marigold Singing Birds Mugs.
- 454 Scarce Northwood White Singing Birds Mug. Beautiful
- 455 Dugan Peach Opal Fisherman's Mug and Black Amethyst Fisherman's Mug. Peach Opal has Heat Check in Handle.
- 456 Marigold Tumbler.
- 457 Fenton Vaseline Orange Tree Mug and Marigold Orange Tree Footed Tumbler.
- 458 Imperial Smoke Robin Tumbler. Has Heat Check in Base
- 459 Blue Lucille Tumbler. Great
- 460 Fantastic Imperial Smoke Fashion Tumbler. They Don't Get Much Better
- 461 Fenton Marigold Horse Head Medallion 7 /12" Plate.
- 462 Beautiful Fenton Marigold Little Daisies ICS Bowl. Super Pastel Iridescence
- 463 Fenton Electric Blue Dragon & Lotus ICS Bowl.
- 464 Fenton Peach Opal Dragon & Lotus Bowl.
- 465 Fenton Marigold Little Flowers Chop Plate.
- 466 Fenton Blue Little Flowers 10" Ruffled & ICS Bowls. (Sold Choice)
- 467 Fenton Green Peacock and Grape Bowl with 3/1 Edge.
- 468 Fenton Marigold Pinecone 6 1/4" Plate.. Awesome Radium Iridescence
- 469 Fenton Marigold Peacock Tail 6 1/2" Plate. Scarce and A Beauty
- 470 Fenton Green Stag and Holly 10" ICS Bowl. Beautiful
- 471 Northwood Electric Purple Wild Strawberry Handgrip Plate.
- 472 Northwood Pumpkin Marigold Wild Strawberry Hand Grip Plate.
- 473 Northwood Green Wild Strawberry Hand Grip Plate.
- 474 Northwood Purple Strawberry Bowl with PCE.
- 475 Northwood Emerald Green Strawberry Bowl with Plain Exterior. Incredible
- 476 Scarce Northwood Peach Opal Strawberry Plate. Beautiful
- 477 Northwood Purple Strawberry Plate with Radium Iridescence.
- 478 Northwood Purple Strawberry Plate with Plain Exterior.
- 479 Northwood White Hearts & Flowers Ruffled Bowl.
- 480 Northwood Marigold Hearts & Flowers Ruffled Bowl.
- 481 Northwood Aqua Opal Hearts and Flowers Compote. Light Butterscotch Iridescence
- 482 Fenton Reverse Amberina Stippled Rays 6 1/2" Ruffled Bowl.
- 483 Fenton Red/Amberina Stippled Rays Bowl. Scale Band Exterior 5 1/2" Ftd Bowl
- 484 Fenton Red Acorn Ruffled Bowl.
- 485 Fenton Cherry Red Holly Hat with Two Sides Up. Gorgeous!
- 486 Fenton Red Ruffled Holly Hat.
- 487 Fenton Marigold Mikado Compote.
- 488 Fenton Blue Mikado Compote.
- 489 Fenton Marigold Thistle Banana Bowl.
- 490 Fenton Amethyst Thistle Banana Bowl. Above average Iridescence
- 491 Dugan Electric Purple Ski Star Low Ruffled 6 1/4" Sauce.
- 492 Dugan Peach Opal Raindrops Nut Bowl with CRE.
- 493 Dugan Purple Rain Drops Dome Footed Bowl. Nice Iridescence
- 494 Dugan White Fanciful ICS Bowl.
- 495 Dugan Blue Fanciful Plate. Super Nice
- 496 Dugan Marigold Brooklyn Bridge Ruffled Bowl with Radium Iridescence. Scarce
- 497 Imperial Electric Purple Heavy Grape 7 1/2" Ruffled Bowl.
- 498 Scarce Imperial Smoke Heavy Grape Ruffled Bowl.
- 499 Scarce Imperial Blue Heavy Grape Ruffled 7 1/4" Bowl. Very Desirable
- 500 Electric Purple Imperial Grape 11" Ruffled Bowl. Beautiful
- 501 Northwood Electric Purple Diamond Points 11 1/2" Vase.
- 502 Northwood Purple Fine Rib 7 1/2" JIP Vase.
- 503 Northwood White 6 1/2" Squatty Drapery Vase.
- 504 Inwald Marigold 6" Fleur de Lis Vase. Beautiful and Darn Scarce
- 505 Fenton Red/ Amberina Peacock and Grape Spatula Footed Bowl. A Nice One
- 506 Fenton Red Persian Medallion Bon-Bon.
- 507 Fenton Amethyst Peacock Tail 8 1/2" CRE Bowl.
- 508 Fenton Amethyst Square Peacock Tail CRE Bowl. Super Cool Bowl
- 509 Fenton Marigold Lions Ruffled 7" Bowl.
- 510 Fenton Pumpkin Marigold Fantail Ruffled Bowl.
- 511 Northwood White Raspberry Tumbler & Emerald Green Raspberry Tumbler. (Sold Choice). Both Incredible
- 512 Northwood Marigold Wishbone & Imperial Marigold File Tumblers. (Sold Choice)
- 513 Northwood Electric Blue & Emerald Green Grape & Gothic Arches Tumblers. (Sold Choice)
- 514 US Glass Cosmos & Cane Marigold & White Tumblers. (Sold Choice)
- 515 Northwood Green & Purple Greek Key Tumblers. (Sold Choice)
- 516 Northwood Electric Blue Blueberry and Northwood Green Singing Birds Tumblers. (Sold Choice)
- 517 Northwood Celeste Blue Concave Diamonds and Fenton Celeste Blue Panels Tumblers.
- 518 Piccardo Berry Butter Dish, Dewhurst Berry Band and Riimaki Garland & Bows. (Sold Choice)
- 519 Brockwitz Marigold Large Curved Star Flower Bowl with Frog.
- 520 US Glass Marigold Pineapple & Fan Footed Cake Plate.



310



315

7*694*****MIXED AADC 970
 Lee Markley
 PO BOX 306
 MENTONE IN 46539-0306



215



313



260



320



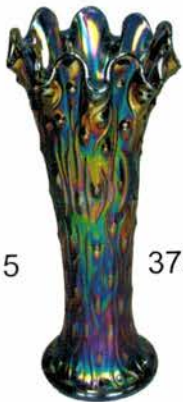
216



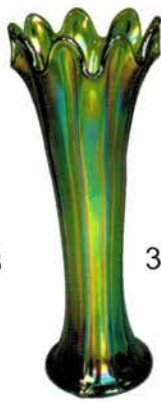
375



415



378



372



376



416



374



280