

# Carnival Glass Auction at the SSCGA Convention

Saturday, January 29th 2011 9:30 am

With an early bird tumbler auction at 8:30

(Preview Friday January 28th from 7 pm to 9 pm. Doors open at 8 am Saturday)

## International Palms Resort

6515 International Drive

Orlando, Florida

Reservations at: 407.351.3500



Well it's time to head south! After a VERY COLD beginning to the winter season, it will be nice to go to a little warmer climate for awhile! This year we are selling for John & Loretta Nielsen and others. This is sure to be a great auction to start off the year with. Lots of nice quality glass in all price ranges. Come on down to Orlando and enjoy a great week of friends and glass. Make sure you pre-register early to ensure you get with the group and the group rates!

All convention information including online registration and activities can be viewed at [www.sscga.com](http://www.sscga.com)

If you cannot make it please give us a call with your bids at

937.548.7835 or 937.459.9562 email: [office@jimwrodaauction.com](mailto:office@jimwrodaauction.com), Thanks, Jim

\*\*\*\*\*Mail, E-Mail, Phone and Absentee Bids Policy:\*\*\*\*\*

We do accept absentee bids, Phone bids (\$500.00 minimum bid) and left bids. All bids will be bid competitively against the audience. ALL absentee bids must be to us no later than 2 days prior to the auction, otherwise we will not guarantee them being entered into our system. All SUCCESSFUL absentee, phone and left bids are subject to a \$7.00 convenience fee, plus postage and insurance. We will contact you within a couple of days after the auction. Please do not call us to see if you won an item. Laurie will call you if your bid was successful. Extra calls coming in just slows us down on contacting people. We are traveling for this auction so it may take until Wednesday (02/02) of the following week to get hold of you. If damage is found during the auction or preview we will cancel your bid. If manufacture problems bother you such as air bubbles, pulled points, soda ash, tool marks, or any other manufacturing flaw, please be specific in your mail bids or email bids. If there is a manufacture flaw on an item that we feel is truly distracting, we have noted that in the listing already. Auction Company has the right NOT to execute an absentee bid for any reason. ALL bids are due 2 days prior to the auction. ALL items must be paid for within 7 business days after notification. PLEASE NOTE: Laurie will get your items to you as fast as possible but, please allow 2 to 3 weeks for your items to be shipped as we may stay in Florida for a week or so. Thanks!

To view more pictures & listing please visit our websites [www.jimwrodaauction.com](http://www.jimwrodaauction.com)

Terms & Conditions: Cash, Travelers checks, business or personal checks w/I.D. Visa/ MC & Discover with a 3% clerking fee.

ALL items sell as is, so please take advantage of your preview time. Enjoy Florida!!



*Jim Wroda Auction Services, LTD*

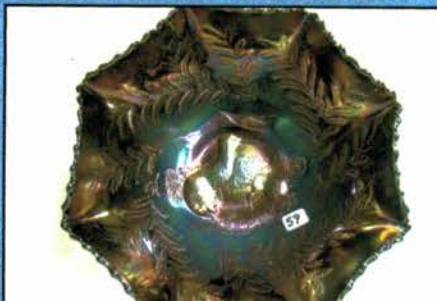
Jim Wroda AU 3132 and Mike Baker AU 3133 - Auctioneers



128



129



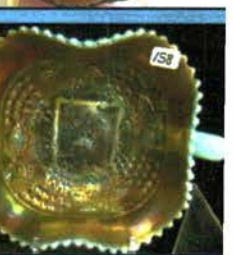
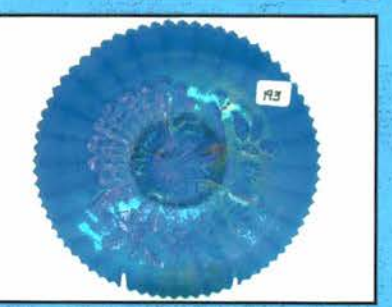
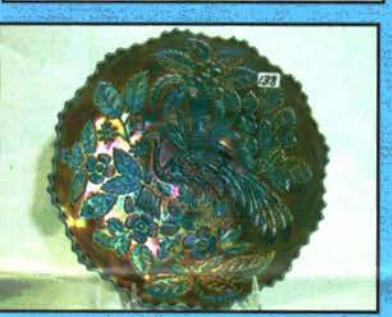
January 29, 2011 SSCGA Auction Listing

1001	Imp Grape elec lav Grape tumbler	1047	US Glass mari Cosmos & Cane tumbler
1002	Dugan elec purple Grapevine & Lattice tumbler	1048	US Glass white Cosmos & cane tumbler
1003	Dugan elec purple Quill tumbler. NICE!	1049	Nwood BLUE Oriental Poppy tumbler
1004	Dugan purple Wreath Cherry tumbler	1050	Fenton purple Harvest Flower tumbler
1005	Dugan mari Wreath Cherry tumbler	1051	Fenton GREEN Milady tumbler. RARE!!
1006	Dugan mari Quill tumbler	1052	Fenton white Orange Tree ft'd tumbler.
1007	Imp lt smoke Field Flower tumbler	1053	Nwood Elec blue Peacock at Fountain tumbler
1008	Concave Diamond tumbler- Vaseline	1054	Nwood Elec blue Peacock at Fountain tumbler
1009	Imp mari Fashion tumbler	1055	Nwood Elec blue Peach tumbler
1010	Fenton mari Apple Tree tumbler	1	Contemporary glass Zodiac compote
1011	Mari Adv tumbler - Pierre SD	2	Gibson 2000 Vintage 7" pitcher in red. Nice
1012	Mari Adv tumbler - Hamilton ONT	3	RARE purple Frolicking Bears mug. ICGA 2004
1013	Mari Adv tumbler - Idaho Falls. ID	4	Contemporary carnival purple milk pitcher
1014	Mari Adv tumbler - Spring Valley, WI	5	Gibson 2000 Grapes and Lattice red ruffled 10" vase
1015	Nwood IB Grape Arbor tumbler. NICE	6	Cont. Nwood grape & cable vase in blue satin
1016	Nwood GREEN Dandelion tumbler	7	Cont. Nwood grape & cable vase in crystal satin
1017	Nwood Smokey lav. Dandelion tumbler	8	Cont. Nwood grape & cable vase, lavender satin
1018	Nwood ELEC PURPLE Dandelion tumbler	9	LG Wright Ice green opal 4 lily epergne
1019	Nwood MARI Dandelion tumbler, HOT	10	Fenton Red Regal Iris GWTW lamp. Great color!
1020	Nwood WHITE Dandelion tumbler.	11	Contemporary Red 5" Perched Eagle
1021	Mburg purple Morning Glory tumble. RARE roughness on edge	12	Nwood 6" elec blue Peacock at Urn ICS bowl
1022	Mburg purple Feather & Heart tumbler	13	Nwood blue Bushel Basket
1023	Mburg green Feather & Heart tumbler	14	Nwood 8" mari Peacocks bowl. Nice
1024	Mburg mari Feather & Heart tumbler	15	Dugan PO 9" Fanciful low ruffled bowl. Nice
1025	Mburg purple Marilyn tumbler	16	Fenton 9" green Peacock at Urn 8 ruffled bowl. Scarce
1026	Mburg mari Diamonds tumbler	17	Imp Grape 7" mari plate
1027	Mburg green Diamonds tumbler	18	Imp Diamond & Sunburst wine
1028	Purple tumbler	19	WHOA!!!! Nwood 13" marigold on custard Tree Trunk mid size vase, EXTREMELY RARE VASE! Great color top to bottom.
1029	Nwood Ice lavender Peacock at Fountain tumbler. Cool color!	20	Extremely RARE Nwood Ice Blue Grape & cable 8pc standard punch set. Just 1 of a couple known. First one to sell at auction in decades! This could be just as RARE as the master set. Nice Dark color.
1030	Nwood sapphire Grape & Gothic Arches tumbler	21	Nwood WHITE Acorn burr 8pc Punch set. Another RARE punch set! Nice color
1031	Imperial elec purple Chatelaine tumbler	22	Nwood 9" IG Hearts & Flowers ruffled bowl
1032	Imp GREEN Octagon tumbler. tiny pinpoint on edge		Nwood 8.5" elec green Good Luck ruffled bowl. Real nice bright irid on a scarce bowl. Some would call this emerald!
1033	Imp elec purple Octagon tumbler. Nice	22a	Nwood 9" elec green Wishbone ruffled bowl
1034	Nwood SMOKE? G&C tumbler. Nice color	23	Nwood 8" elec purple Hearts & Flowers ruffled bowl.
1035	Nwood IG Raspberry tumbler	24	Nwood 8" beautiful sapphire 3 Fruits ruffled bowl. A great piece of Sapphire!
1036	Nwood white Oriental Poppy tumbler	25	RARE & Beautiful horehound 3 fruits stippled plate Just a knock out!
1037	Nwood white Peach tumbler w/ gold trim	26	Fenton 9" green Peacock & Grape flat plate. RARE!!!!
1038	Dugan white painted Dahlia tumbler	27	Fenton 9" green Persian Medallion plate. Another RARE Fenton plate/ Nice color
1039	Nwood clam broth Oriental Poppy tumbler	28	Fenton GREEN Mikado compote. RARE
1040	Nwood elec purple Raspberry tumbler		
1041	Dugan pumpkin mari Jeweled Heart tumbler		
1042	Nwood IB Grape Arbor tumbler		
1043	Nwood white Grape Arbor tumbler		
1044	Nwood elec purple Grape Arbor tumbler		
1045	Fenton white Apple Tree tumbler		
1046	US Glass JN MILLNER Cosmos & Cane tumbler		

- 30 Hang on!!! HOT pastel mari Rose Show plate. This is definitely a "just buy it"!!!
- 31 Nwood 8" elec blue Hearts & Flowers bowl.
- 32 Imp 11" amber Ripple vase
- 33 Imp 13" smoke Ripple mid size vase
- 34 Imp 14" mari Ripple Funeral vase. Scarce
- 35 Imp 13" elec purple Ripple vase
- 36 Dugan 12" PO Pulled Loops vase.
- 37 Nwood 12" Green thin rib mid size vase. Scarce
- 38 Nwood GREEN Hearts & Flowers compote. RARE color and pretty!
- 39 Nwood IG Hearts & Flowers compote, Scarce
- 40 Nwood elec blue Hearts & Flowers compote. WONDERFUL COLOR!
- 41 Nwood IB Hearts & Flowers compote, Scarce
- 42 Nwood dark mari Hearts & Flowers compote. WONDERFUL COLOR!
- 43 Cambridge purple Inv. Thistle water pitcher. Very scarce and very nice pressing.
- 44 Fenton 7 pc Columbine HP water set.
- 45 Dugan elec purple Nautilus gravy boat. Nice
- 46 Nwood PO Nautilus gravy Boat. Scarce
- 47 Nwood GREEN Wishbone Epergne. Nice
- 48 Imp mari Heavy Grape chop plate
- 49 Nwood mari Flute table set w/ celery vase
- 50 Nwood elec purple Nippon PCE bowl
- 51 Fenton 9" blue Holly plate
- 52 Nwood 9" blue Rose Show plate. Very nice!
- 53 Nwood 9" radium mari 3 Fruits plate. WOW
- 54 Nwood mari Strawberry plate.
- 55 Dugan PO Nautilus gravy boat
- 56 Dugan Purple Nautilus gravy boat. RARE shape
- 57 Fenton 9" purple Captive Rose plate Very nice for this!
- 58 Australian 10" black amy King Fisher bowl. RARE, good color
- 59 Australian 10" Black Amy Kiwi ruffled bowl. RARE This is one tough bowl!
- 60 Fenton 9" mari Peacock at Urn plate. nice color
- 61 Fenton 6" blue Pinecone plate
- 62 Nwood 9" mari Good luck plate
- 63 Nwood elec purple G&C table set. Super bright irid. all matching
- 64 European blue wine bottle and 2 cordials
- 65 Imp elec purple Diamond & Sunburst wine decanter
- 66 6- purple Diamond & Sunburst wines. 1 money
- 67 Imp bright mari Loganberry vase
- 68 Dugan PO Fishnet epergne. Scarce
- 69 Brockwitz mari 11" & 5" mari Rose Garden plates both RARE
- 70 Dugan 8" elec purple Lined Lattice vase
- 71 Fenton 8" green Long Thumbprint vase
- 72 European 10" mari vase
- 73 Nwood 7" purple Tree Trunk squatty vase
- 74 Nwood 10" green 4 pillars vase. nice shape
- 75 Nwood 12" lt amy Thin Rib vase. neat color
- 76 2 clambroth Ripple vases
- 77 Nwood mari G&C 8pc punch set. cup r stippled. Lot
- 78 European mari Daisy & Scroll 8pc wine set
- 79 European mari Star & Fan 9pc wine set w/ tray
- 80 European mari "Bremen" wine bottle and 3 stems
- 81 European mari Drapery vari 6pc wine set.
- 82 RARE Nwood IB wide panel epergne. Nice color but missing center lily.
- 83 Imp smoke candlesticks
- 84 Fenton blue Orange Tree hatpin holder
- 85 pair of mari advertising mugs
- 86 Imp elec purple Flute TP
- 87 Imp green Flute TP
- 88 Imp mari/ lt amber Flute TP
- 89 Imp mari Star Medallion milk pitcher
- 90 Scarce Imp Smoke Windmill milk pitcher. Nice color
- 91 Dark Mari Windmill milk pitcher. PUMPKIN!
- 92 RARE Smoke Poinsettia milk pitcher.
- 93 Imp elec purple Poinsettia milk pitcher. RARE and SUPER
- 94 Imp GREEN Poinsettia milk pitcher
- 95 Imp mari Poinsettia Milk pitcher
- 96 Mari Quill water pitcher with dark color. Hard to find one of these with color to the bottom. Here it is.
- 97 RARE West Checkerboard 6pc water set. Tad silvery but go find another for sale
- 98 US Glass Palm Beach mari cider pitcher
- 99 Fenton 8" blue 2 flowers ft'd bowl
- 100 Fenton 10" blue Chrysanthemum ft'd ICS bowl. Nice color!
- 101 Imp 10" mari 474 vase w/ turned in top. Scarce
- 102 European mari 9pc wine set,
- 103 Jain mari Hand vase
- 104 European mari 9pc wine set,
- 105 European mari butter dish
- 106 Imp elec purple Flute cr/sug set.
- 107 Australian purple 5" Kangaroo ruffled bowl.
- 108 RARE Australian Emu black amy compote Very rare and Nice detail!
- 109 Dugan 7" PO Bells and Beads bowl
- 110 Dugan purple Wreath Cherries water pitcher. Scarce. Good lookin' pitcher
- 111 Millersburg GREEN Hanging Cherries milk pitcher
- 112 Millersburg purple Hanging Cherries milk pitcher
- 113 Millersburg mari Hanging Cherries milk pitcher
- 114 Nwood green Raspberry Milk pitcher, Scarce
- 115 Nwood purple Raspberry milk pitcher
- 116 Nwood Lime green Raspberry milk pitcher. Nice color and very hard to find
- 117 Brockwitz mari Rose Garden butter dish

- 118 Nwood mari G&C 8pc Whiskey set. RARE to find complete set Well matched
- 119 Nwood purple G&C 8pc Whiskey set. Another RARE set complete
- 120 European mari Berry Band & Ribs 8pc wine set
- 121 Fenton 12" celeste Florentine candlesticks.
- 122 Fenton 8" ebony Florentine candlesticks
- 123 Fenton 8" mari Florentine candlesticks
- 124 Inca mari bottle
- 125 Inca purple bottle
- 126 Inca mari bottle
- 127 pastel mari 5" Temple doll. Chip on finial
- 128 Nwood Ice Blue Wisteria complete 7pc water set. Incredible dark color and irid on a VERY RARE set. This is the one!
- 129 Nwood white Wisteria complete 7pc water set. YES!!! 2 Wisteria sets in the same auction. NEVER HAPPENS! Both are "the bomb" as they say!!!
- 130 Imp mari Fashion rosebowl
- 131 Dugan purple pony ruffled bowl
- 132 Blue Kittens cup.
- 133 RARE Red 7" Peacock tail ICS bowl. Nice piece of red!
- 134 Imp 6" elec purple Thin Rib & Drape vase. Oh Yeah!!!
- 135 Dugan "frit" midsize vase. Biggest pc I have seen.
- 136 HOT HOT HOT Imp elec purple Windmill dresser tray.....
- 137 Fenton 8" RED Holly ICS bowl. Very scarce
- 138 Blasting elec blue Peacock at Urn plate. One of t nicer one! A keeper
- 139 Imp elec purple 9" Open Rose plate. Very nice. Has small flake on rose
- 140 Stunning Nwood Pastel AO Three Fruits plate. Just absolutely perfect in all ways! One for the record books here!
- 141 RADIUM MARI G&C plate w/ BW back.
- 142 Nwood 9" olive green G&C plate w/ BW back
- 143 SUPER pastel mari 3 fruits ruffled bowl
- 144 Elec purple 8" Open Rose deep bowl
- 145 Lacy Dew Drop MMG water pitcher
- 146 Nwood 9" elec blue Good Luck Stippled bowl. Nice
- 147 Nwood LIME GREEN 3 fruits stippled ruffled bowl. RARE and nice color. Not many around and NONE for sale
- 148 Fenton 5' RED Waterlily ft'd sauce. NICE!
- 149 Fenton 8" BLUE OPAL G&C ft'd ruffled bowl VERY RARE! and SUPER color
- 150 Nwood IB Daisy & Plume candy dish
- 151 Nwood elec green Sunflower ft'd bowl. Very hot!
- 152 Nwood elec purple Town pump. WOW!!!
- 153 Dugan elec purple Strawberry epergne. Killer elec irid!
- 154 Imp 7" elec purple Beaded Bulls eye vase
- 155 Fenton blue Orange Tree loving cup.
- 156 Imp elec purple 7" Beaded Bulls eye vase
- 157 Imp 10' mari Hattie chop plate
- 158 Nwood AO Grape & Cable stippled bon bon. VERY RARE! Lots of opal
- 159 Imp 10" amber Hattie chop plate. nice blue irid on a scarce plate
- 160 Dugan 7" white Garden Path plate
- 161 Nwood mari G&C bon bon. Nice
- 162 SUPER Nwood IB 9" Poppy Show plate. Here is on heck of a plate!
- 163 Fenton mari Chrysanthemum giant rose bowl.
- 164 Nwood 9" white Hearts & flowers plate. Scarce and has frosty irid!
- 165 On fire elec mari Peacock & Grape 9" plate. you may need 2 check books for this one!
- 166 Nwood 9" pastel AO 3 fruits plate. Killer plate with opal on the edge.
- 167 Nwood pastel AO Rose Show bowl.
- 168 Fenton Mari 2 side OE basket w/ Brand adv.
- 169 Fenton 5" blue OE hat
- 170 Fenton 5" Lavender OE hat
- 171 Super Green Leaf & Beads rose bowl
- 172 Fenton blue Orange Tree loving cup
- 173 Dugan white Wreath Cherry painted 5" sauce
- 174 Dugan 9" Blue Windflower plate. Scarce
- 175 Dugan 5" purple Wreathed Cherry sauce
- 176 Dugan white 9" Fanciful bowl
- 177 Fenton purple 6" Lotus & Grape ft'd bowl.
- 178 imp. 9" elec purple Star of David bowl. HOT!
- 179 Nwood white Leaf & Beads rose bowl. Scarce
- 180 Nwood mari Peacocks bowl.
- 181 Dugan 6" purple Grapevine Lattice ruffled plate
- 182 Dugan 6" white Persian Garden ICS bowl
- 183 West 8" MMG Smooth Rays ruffled bowl
- 184 Fenton 8" TEAL Concord bowl. Odd color RARE Color
- 185 Nwood 5" mari Peacock at Urn ICS bowl
- 186 Dugan 7" white Grapevine & Lattice bowl
- 187 Nwood 8" green 3 fruits bowl w/ PB. Nice blue irid.
- 188 Nwood 8" Sapphire 3 fruits stippled ruffled bowl Another beauty!
- 189 Fenton HP Magnolia Drape water pitcher
- 190 European Sowerby blue Hen on Nest
- 191 European Sowerby mari Hen on Nest
- 192 RARE Nwood 9" elec blue Good Luck plate. Super color and just an incredible plate! Blasting electric irid!
- 193 Smashing elec blue Peacocks stippled plate. Great stretchy irid. Top plate
- 194 One of the best 1914 Parkersburg Elks plate in elec blue. The entire elk is BLLUE irid! WOW
- 195 Nwood 9" dark mari Peacocks plate. Nice
- 196 Nwood 9" IB Peacocks plate with wonderful pastel irid. Awesome!
- 197 Nwood 9" ELEC GREEN poppy Show plate w/ an amazing irid! WOW!!!
- 198 RARE Nwood Ice Blue Peacock at Fountain punch bowl and base. As dark as you will see IB!

- 198a Nwood WHITE Peacock at Fountain 8pc punch set. Great frosty irid on a very tough punch set!
- 199 Imp mari Poppy Show vase. NICE
- 200 Imp elec SMOKE Poppy Show vase. Another beauty in this auction!
- 201 Nwood 13' blue Thin Rib midsize vase. Nice
- 202 Nwood BLUE Peacock at Fountain fruit bowl. Nice, Always a hit!
- 203 Cool and RARE Pan American 8" Tomahawk w/ painted Indian. Buffalo 1901
- 204 RARE Quill purple 5 pc water set. Well matched. This is such a neat pattern...
- 205 Fenton 9" mari Dragon & Lotus bowl
- 206 Fenton 8" vaseline Holly ICS bowl
- 207 Fenton Peacock at urn ICS bowl in purple
- 208 Nwood 9" mari Nippon plate. Very scarce
- 209 Purple Rambler Rose 3-1 edge bowl. Scarce
- 210 Very sharp Nwood Peacock at Urn purple Chop plate
- 211 Mburg 9" Peacock at Urn 5pc berry set. rad purple. well matched
- 212 pair mari Blossom & Band car vases.
- 213 Dugan 10" white Persian Garden MIC bowl
- 214 Fenton 7" mari Scales plate
- 215 Imp 9" mari Open Rose plate
- 216 Dugan 7" mari Fish scales and Beads plate
- 217 Mari 7" Three in One plate
- 218 Nwood 9" mari G&C vari plate
- 219 Fenton 7" MMG Prayer Rug plate
- 220 Imp Iron Cross stretch bowl. purple
- 221 Nwood 9" white Wishbone PCE bowl. No Harm TINY pinpoint on base.
- 222 Nwood 9" purple Peacocks plate. Small edge flake
- 223 Imp 8" lavender Windmill pickle dish
- 224 Imp 10" mari Hattie chop plate
- 225 Imp 7" elec purple Shell & Sand ruffled bowl. Nice
- 226 Fenton Stipple Rays compote in celeste blue. Scarce
- 227 Fenton 9" blue Orange Tree plate
- 228 Nwood 9" mari 3 Fruits stippled plate
- 229 Nwood elec green G&C dresser tray
- 230 Dugan mari Question marks plate
- 231 Dugan purple Nautilus gravy boat
- 232 Nwood green Fine Cut & Roses rosebowl. Nice color
- 233 Nwood white Leaf & Beads nut bowl. Scarce
- 234 Mburg green Sunflower pin tray. typical flake on petal.
- 235 Fenton mari Blueberry 7pc water set. nice color
- 236 Fenton green Vintage single lily epergne
- 237 Nwood mari Blossom time compote
- 238 Nwood hot elec green Good Luck PCE bowl. Here's a good one!
- 239 Nwood 9" purple Strawberry PCE bowl. Sharp points
- 240 Nwood 9" mari Stippled Good Luck plate.
- 241 Fenton blue 10" Stag & Holly ft'd ruffled bowl.
- 242 Killer RADIUM mari Blueberry water pitcher. HOT!
- 243 Imperial 12" elec purple Beaded bulls eye vase.
- 244 Sweet Imp elec purple Tiger lily water pitcher
- 245 Millersburg radium purple Nesting Swans ruffled bowl
- 246 Nwood 9" elec purple Poppy Show plate. Nice!
- 247 Nwood 9" mari Good Luck stippled plate. silvery but flat
- 248 Nwood elec purple Midsize Grape & Cable punch set w/ 9 cups. The best midsize I have ever seen
- 249 Imp elec purple Grape punch bowl and base. nice!
- 250 RARE Frolicking Bears water pitcher in silver Overlay. One of the rarest water pitchers ever produced! Here a VERY RARE chance to buy one of these!
- 251 RARE Frolicking Bears tumbler in silver overlay. Again extremely rare tumbler.
- 252 Nwood 9" white Poppy Show plate
- 253 Nwood 9" SUPER pastel mari 3 fruits plate. HOT!
- 254 Holy cow! Elec green 9" Tree Trunk vase. this is just the most incredible green vase you will see. A nice dark green glass with a HEAVY blue irid.!
- 255 Nwood 8" elec blue Good Luck ruffled bowl WOW!
- 256 Nwood 9" elec purple Peacocks PCE bowl. HOT
- 257 Nwood blue G&C banded stippled lg fruit bowl. Really odd color Not ren. blue but different.. Very good color
- 258 Nwood elec blue Butterfly bon bon w/ threaded back Scarce
- 259 Nwood 9" Ren Blue 3 fruits stippled spatula ft'd bowl. Beauty!
- 260 WOW!! Here a wonderful Ice blue opal 3 fruits stippled spatula ft'd bowl. BUY IT!!!
- 261 Fenton 8" AO Vintage CRE bowl. RARE and nice!
- 262 Fenton 9" GREEN Acorn plate. RARE
- 263 Imp. 8" elec purple Grape ruffled bowl. Blasting color!
- 264 Purple G&C perfume bottle. Nice color
- 265 Imp 4.5" elec purple Morning Glory vase w/ flared top
- 266 Fenton amber 6" Blackberry Spray JIP hat w CRE. Thanks for participating in today's auction. We hope you have enjoyed the convention. Please watch our website for future auctions at [www.jimwrodaauction.com](http://www.jimwrodaauction.com)





*Jim Wroda Auction Services, LTD*

5239 ST RT 49 South  
Greenville, Ohio 45331  
937.548.7835

PRESORTED  
FIRST CLASS MAIL  
U.S. POSTAGE  
**PAID**  
CELINA, OH  
PERMIT NO. 99

*FIRST CLASS POSTAGE PAID*

4-4\*\*\*\*\*AUTO\*\*MIXED AADC 434  
LEE MARKLEY  
PO BOX 306  
502 N BROADWAY ST  
MENTONE IN 46539-9531



Volume 2, Series 2011

