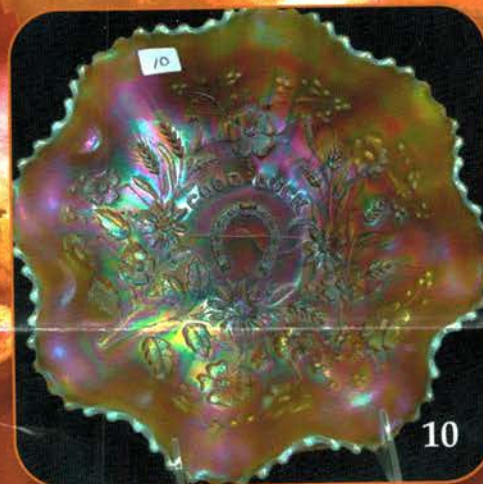
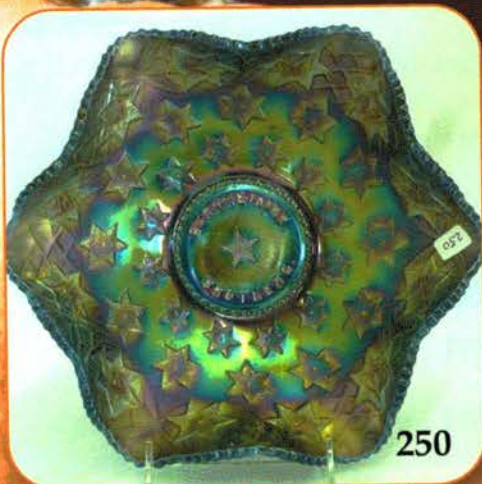


Carnival Glass Auction

Saturday
October 30th, 2010
9:30 AM

Senior Activity Center
326 4th St NE
Mason City, Iowa



Seeck Auctions

JIM & JAN SEECK
641-424-1116



Carnival Glass Auction – 9:30 AM

Senior Activity Center – Mason City, Iowa

326 4th St NE



(From South: Take US Hwy 65 into Mason City and turn right or East on 4th ST NE, go 2 blocks)

(From North: Take US Hwy 65 into Mason City and turn left or East on 4th ST NE, go 4 blocks)

(This building is next to the Charlie Brown Daycare play yard)

Preview: Friday, October 29th, 3 pm – 6 pm

NO BUYER'S PREMIUM

For Lots of Color Pictures Check our WEBSITE:

www.seeckauction.com

** Please email us and we can put you on our Internet mailing list for auction updates and notices. (Please indicate Carnival Glass)*

Seeck Auctions is pleased to be selling the Carnival Glass collection of the Late June McCarter of California. June was active in the Northern California Club and traveled to many of the West Coast conventions. We've added glass from a variety of consignors and the auction has a nice selection of glass for everyone.

Lodging: Mason City: Comfort Inn – (641)423-4444; Country Inn & Suites – (641)423-1770; Super 8 – (641)423-8855; Clear Lake: AmericInn – (641)357-8954; Best Western Holiday Lodge (641)357-5253.

Terms: Cash or Check, VISA and MasterCard accepted w/proper ID. **4% Clerking Fee** on all purchases except for payment of cash or check. Announcements made day of sale take precedence over any printed information.

Jim and Jan Seeck
641-424-1116

Seeck Auctions

EMAIL:
jimjan@seeckauction.com

ABSENTEE BID POLICY

1. Write-in bids will be accepted by sending the numbers of the item(s) desired and the amount bid on each to: **Seeck Auctions, PO Box 377, Mason City, Iowa 50402.**
2. You may call in your bids previous to the auction at (641)424-1116.
3. You may email your bids to us: jimjan@seeckauction.com Include the numbers of the item(s) you would like to bid on and amount bid on each, please include your telephone number.
4. **Live phone bidding is available.** Bidding must start on item at \$500. Please call for details.
5. There is a **\$7 handling charge** for each successful bid. Shipping and insurance charges are additional.
6. Bidders will be notified by phone/email if their bid(s) are successful. This will be done 1 - 3 days after the auction.
7. Please have all bids in by **Thurs., Oct. 28th.** All bids (by mail, phone or **email**) after this date may not be carried out.
8. Please place bids in the following increments: **\$1 to \$300 - \$5 increments, \$300 to \$700 - \$25 increments, \$700 to \$1500 - \$50 increments, and \$1500 and up - \$100 increments.**
9. **If you do not receive an item that sold for less than your bid, assume we cancelled your bid because the piece of glass had below average color, manufacture problem, damage or was not listed correctly.**
10. Auction results are posted on our website within 2 weeks of the auction.

- ___ 1. Orange Tree shaving mug - blue
- ___ 2. Orange Tree shaving mug - marigold
- ___ 3. Orange Tree standard size mug - purple - scarce
- ___ 4. Orange Tree standard size mug - lavender
- ___ 5. Orange Tree standard size mug - blue
- ___ 6. Orange Tree standard size mug - marigold
- ___ 7. Scroll Embossed small size ruffled compote - green
- ___ 8. Scroll Embossed small size ruffled compote - marigold
- ___ 9. Smooth Rays ruffled compote - green
- ___ 10. **Good Luck ruffled bowl w/ribbed back - aqua opal - butterscotch & super, a great example**
- ___ 11. **Good Luck ruffled bowls w/ribbed backs (2) - blue - nice, choice**
- ___ 12. Good Luck ruffled bowl w/ribbed back - purple
- ___ 13. Good Luck ruffled bowl w/ribbed back - marigold - dark & fabulous
- ___ 14. Shell deep ruffled bowl - smoke
- ___ 15. **Holly 9" plate - amethyst - super pretty**
- ___ 16. **Holly 9" plates (2) - blue - nice, choice**
- ___ 17. Holly 9" plate - white - pretty
- ___ 17A. Holly 9" plate - marigold - pretty
- ___ 18. Parlor Panels 11" vase - purple - super
- ___ 19. Parlor Panels 13" vase - marigold
- ___ 20. N's Bushel Basket - aqua opal - scarce
- ___ 21. N's Bushel Basket - blue
- ___ 22. N's Bushel Basket - purple
- ___ 23. N's Bushel Baskets (2) - marigold - choice
- ___ 24. Feathered Serpent 10" ruffled bowl - amethyst - silvery
- ___ 25. **Tree Trunk 18" funeral vase w/plunger base - blue - super pretty w/electric highlights, this is a beauty**
- ___ 26. Two Flowers spt ftd rose bowl - marigold
- ___ 27. M'burg Whirling Leaves ruffled bowl - amethyst - satin
- ___ 28. Vintage 10" IC shaped bowl - blue - silvery
- ___ 29. Little Beads small round compote - peach opal - rare color
- ___ 30. **Fruits & Flowers bonbon - sapphire - extremely rare color & very nice**
- ___ 31. **Fruits & Flowers bonbon - white - super**
- ___ 32. Fruits & Flowers bonbon - blue - pretty
- ___ 33. Fruits & Flowers bonbon - amethyst - nice
- ___ 34. Rainbow 9" plate - marigold
- ___ 35. **Poppy Show 9" plate - blue - base chip but super pretty**
- ___ 36. **Poppy Show 9" plate - marigold - nice, scarce**
- ___ 37. Poppy Show 9" plate - white - scarce
- ___ 38. Rustic 15 1/2" mid-size vases (2) - green - choice
- ___ 39. Rustic 15 1/2" mid-sizes vases (2) - blue - choice
- ___ 40. **Grape & Gothic Arches 4 pc. table set - irid. custard - butter dish has underside chip, very rare set to find!**
- ___ 41. Grape & Gothic Arches spooner & creamer - purple - rare color, sugar cracked, choice
- ___ 42. **Diamond Lace 5 pc. water set - purple - fantastic**
- ___ 43. M'burg Rays & Ribbons deep round bowl - green - satin
- ___ 44. Thin Rib & Drape 5" vase - marigold
- ___ 45. Daisy & Drape flared out vase - aqua opal - nice
- ___ 46. Lined Lattice 9 1/2" vase - purple - nice
- ___ 47. Lined Lattice 9" vase - white
- ___ 48. Lined Lattice 9" vase - marigold - pretty
- ___ 49. Ripple 7 1/2" squatty vase, has 3 3/8" base - marigold
- ___ 50. **Regal Iris GWTW lamp - marigold - super irid., has 1" heat check in the side of the shade**
- ___ 51. Asters 8" round bowl - marigold
- ___ 52. Beaded Cable rose bowl - white
- ___ 53. Beaded Cable rose bowl - aqua opal
- ___ 54. Beaded Cable rose bowl - blue
- ___ 55. Beaded Cable rose bowls (3) - green - choice
- ___ 56. Beaded Cable rose bowl - purple - silvery, has rayed interior
- ___ 57. Beaded Cable rose bowls (3) - marigold - choice
- ___ 58. Beaded Cable rose bowl - blue opal - not Carnival
- ___ 59. StJarna cvd bonbon - blue - Eda
- ___ 60. Singing Birds 7 pc. water set - green - very pretty set, chip of epoxy on base
- ___ 61. Basketweave Open Edge 2 sides up basket - marigold
- ___ 62. **Grape & Cable hatpin holder - green**
- ___ 63. Grape & Cable hatpin holder - purple
- ___ 64. Grape & Cable hatpin holder - marigold
- ___ 65. **Milady tankard water pitcher - marigold - scarce, nice**
- ___ 66. Cherry Chain IC shaped sauce - blue
- ___ 67. **Hearts & Flowers ruffled compote - purple - super pretty**
- ___ 68. Hearts & Flowers ruffled compote - aqua opal - minor pinpoint on base
- ___ 69. Hearts & Flowers ruffled compote - white
- ___ 70. Hearts & Flowers ruffled compote - marigold
- ___ 71. Blackberry Open Edge 2 sides up basket - powder blue
- ___ 72. **Plaid ruffled bowl - green - scarce color, nice**
- ___ 73. Plaid ruffled bowl - blue - scarce, nice
- ___ 74. Quarter Block cvd butter dish - marigold
- ___ 75. **Wishbone ftd 9" plate - marigold - scarce color, nice**
- ___ 76. Wishbone ftd 9" plate - purple
- ___ 77. Persian Medallion ruffled sauce - blue - silvery
- ___ 78. Cherry Circles card tray shaped bonbon - blue
- ___ 79. Dragon & Lotus 3 in 1 edge bowl - green
- ___ 80. **N's Peacock at Urn master IC bowl - white - super pretty irid.**
- ___ 81. **N's Peacock at Urn IC sauces (6) - white - choice**
- ___ 82. **N's Peacock at Urn master IC bowl - marigold - dark & super**
- ___ 83. N's Peacock at Urn IC sauce - purple - pretty
- ___ 84. Peacock Tail 3 in 1 edge 10" bowl - green
- ___ 85. **Captive Rose 9" plate - green - scarce & highly desirable**
- ___ 86. **Captive Rose 9" plate - blue - scarce**
- ___ 87. **Captive Rose 9" plate - marigold - dark, nice**
- ___ 88. Heavy Grape 8" plate - purple - super pretty
- ___ 89. Candle Holder vase - cobalt blue
- ___ 90. Cannonball pitcher - ice green - enamel pitcher with no enameling
- ___ 91. **Drapery Variant 8 1/2" vase - amethyst - pretty**
- ___ 92. **Drapery Variant 8 1/2" vase - blue - electric**
- ___ 93. **Drapery Variant 8 1/2" vase - marigold - pumpkin**
- ___ 94. Little Barrel - green
- ___ 95. Floral & Grape 7 pc. water set - blue
- ___ 96. M'burg Holly Sprig card tray shaped bonbon - marigold - radium & nice
- ___ 97. **Imperial Grape wine decanter - purple - super**
- ___ 98. Imperial Grape 7 pc. wine set - marigold
- ___ 99. Pearly Dots 8" ruffled bowl - aqua
- ___ 100. **Wreath of Roses punch bowl & base w/Vintage interior & non ruffled top - blue - the best I've seen, fantastic!**
- ___ 101. **Wreath of Roses punch bowl & base w/plain interior & straight up top - marigold - nice**
- ___ 102. Ski Star lg ruffled bowl - peach opal
- ___ 103. Miniature Morning Glory 5" vase - green
- ___ 104. Miniature Morning Glory 5" vase - marigold
- ___ 105. **Diamond Points 10 1/2" vase - aqua opal - heat check in base**

- ___ 106. Diamond Points 10 1/2" vase - purple
- ___ 107. Diamond Points 10 1/2" vase - green - super
- ___ 108. Dandelion mug - purple - minor pinpoint on base
- ___ 109. Dandelion mug - marigold
- ___ 110. M'burg Trout & Fly ruffled bowl - green - radium, silvery
- ___ 111. Strawberry bonbon - lime green w/ marigold overlay
- ___ 112. Strawberry card tray shaped bonbon - blue
- ___ 113. Split Diamond 3 pc. table set - marigold
- ___ 114. Fine Cut & Roses rose bowl - ice blue
- ___ **115. Fenton Peacock at Urn ruffled bowl - amethyst**
- ___ 116. Fenton Peacock at Urn ruffled bowl - green - super, chip on point
- ___ 117. Fenton Peacock at Urn ruffled bowl - blue
- ___ 118. Fenton Peacock at Urn ruffled bowl - marigold - pretty
- ___ 119. Diamond Sphere hatpin - purple
- ___ **120. N's Eight Sided bushel basket - green - scarce color**
- ___ 121. N's Eight Sided bushel basket - amethyst - nice
- ___ 122. N's Eight Sided bushel basket - white
- ___ 123. N's Eight Sided bushel basket - marigold
- ___ 124. Ripple 5 1/2" vase, has 2 1/2" base - marigold
- ___ **125. Wide Panel epergne - green - very rare & highly desirable, nice**
- ___ **126. Wide Panel epergne - marigold - very scarce & desirable, nice**
- ___ 127. Spirilex 11" vase - blue
- ___ 128. Spirilex 10 1/2" vase - peach opal
- ___ 129. Holly 2 sides up compote - marigold - scarce shape
- ___ **130. Peacocks 9" plate w/ribbed back - green - scarce & highly desirable, nice**
- ___ **131. Peacocks 9" plate w/ribbed back - blue - very pretty, scarce**
- ___ **132. Peacocks 9" plate w/ribbed back - purple - very nice, scarce**
- ___ **133. Peacocks 9" plate w/ribbed back - marigold - nice**
- ___ 133A. Peacocks 9" plate w/ribbed back - ice green - scarce
- ___ 134. Diamond Ring rose bowl - marigold
- ___ **135. Morning Glory 14" funeral vase - marigold - dark & super**
- ___ 136. Waterlily ftd ruffled sauce - aqua - rare color
- ___ 137. M'burg Little Stars 3 in 1 edge 9" bowl - marigold - satin
- ___ 138. Hobstar & Cut Triangles rose bowl - amethyst
- ___ 139. Hobstar & Cut Triangles rose bowl - marigold
- ___ 140. Good Luck ruffled bowl w/BW back - purple
- ___ 141. Good Luck ruffled bowl w/BW back - marigold - nice
- ___ **142. Apple Blossom Twigs ruffled bowl - purple - super**
- ___ 143. Apple Blossom Twigs ruffled bowl - peach opal - nice
- ___ 144. Royal Oak 6 pc. berry set - rubina, not carnival - several pcs. damaged
- ___ 145. Persian Garden lg IC shaped bowl - white
- ___ 146. Grape & Cable 9" plate w/plain back - purple
- ___ 147. Grape & Cable 9" plate w/BW back - marigold
- ___ 148. Grape & Cable banana boat - marigold - nice
- ___ 149. Pillow & Sunburst 9" plate - marigold - rare shape
- ___ **150. Rustic 19" funeral vase - blue - super rare vase, 4" crack in side**
- ___ 151. #658 8" pair of candlesticks - celeste blue
- ___ 152. Dugan Cherries IC shaped bowl - peach opal - pretty
- ___ 153. Imperial Grape water carafe - purple - nice
- ___ **154. J.R. Millner Co. advertising Cosmos & Cane tumbler - honey amber - nice**
- ___ 155. Fanciful IC shaped bowl - white
- ___ 156. Fanciful IC shaped bowl - marigold
- ___ 157. Cathedral or Curved Star chalice - blue - super pretty, rare color
- ___ 158. Nautilus whimsy sugar - peach opal
- ___ 159. Holly goblet shaped compote - vaseline
- ___ **160. Poppy Show vase - marigold - very scarce & highly desired**
- ___ 161. Poppy Show vase - vaseline opal - contemporary
- ___ 162. Poppy Show vase - champagne - contemporary
- ___ 163. Poppy Show vase - plum opal - contemporary
- ___ 164. Poppy Show vase - aqua - contemporary
- ___ 165. Butterfly & Tulip large ruffled bowl - purple - contemporary
- ___ 166. Peacock Garden decorated vase - aqua opal - decorated by C. Hareman, contemporary
- ___ 167. Peacock Garden vase - purple - contemporary
- ___ **168. Columbia ruffled compote - purple - super**
- ___ 169. Four Flowers 6" plate - peach opal
- ___ **170. Singing Birds 4 pc. table set - purple - nice set**
- ___ 171. Open Rose 5" ruffled sauce - smoke
- ___ 172. Stag & Holly lg size IC shaped bowl - blue - electric & super
- ___ 173. John H. Brand Co. Furniture Basketweave Open Edge 2 sides up baskets (2) - marigold - choice
- ___ 174. Fenton's Grape & Cable deep round bowl - aqua
- ___ **175. Mikado deep round compote - blue - super pretty, scarce**
- ___ 176. Mikado round compote - marigold
- ___ 177. Strawberry 9" plate w/BW back - green
- ___ 178. Strawberry 9" plate w/BW back - purple
- ___ 179. Portly pair of candlesticks - celeste blue
- ___ **180. Spector's Department Store Heart & Vine 9" plate - marigold - scarce & desirable**
- ___ 181. Grape Delight ftd rose bowl w/ruffled top - white
- ___ 182. Grape Delight ftd rose bowl w/round top - purple
- ___ **183. Persian Medallion bonbon - red - scarce & desirable**
- ___ 184. Pinecone round sauce - powder blue
- ___ **185. Apple Blossom Twigs 9" plate w/smooth edge - peach opal - scarce**
- ___ 186. Wishbone ftd deep ruffled bowl - purple
- ___ 187. Wishbone deep ftd ruffled bowl - marigold
- ___ 188. Star & Fan wine bottles w/stoppers (2) - marigold - choice
- ___ 189. Wild Rose rose bowl - green
- ___ **190. Fenton Peacock at Urn 9" plate - blue - super pretty**
- ___ **191. Fenton Peacock at Urn 9" plate - marigold - nice**
- ___ **192. Fenton Peacock at Urn 9" plates (2) - white - nice, choice**
- ___ 193. Grape Delight nut bowl - blue
- ___ 194. Grape Delight nut bowl - marigold
- ___ **195. Concord 3 in 1 edge bowl - amethyst - very pretty**
- ___ 196. Enameled Magnolia water pitcher - marigold
- ___ **197. Scroll Embossed 9" plate - purple - pretty**
- ___ 198. Scroll Embossed 9" plate - marigold
- ___ 199. Circle Scroll spooner - purple - nice
- ___ **200. Rose Show Variant 9" plate - blue - super pretty & very rare, an outstanding piece!**
- ___ 201. Singing Birds spooner - purple
- ___ **202. Grape & Cable 10 pc. punch set - purple - very nice set, pretty**
- ___ **203. Grape & Cable 8 pc. punch set - marigold - nice**
- ___ 204. Garland rose bowl - blue
- ___ **205. Leaf & Beads rose bowl - white - scarce, nice**
- ___ 206. Leaf & Beads rose bowl - aqua opal - butterscotch, nice
- ___ 207. Leaf & Beads rose bowl - blue
- ___ 208. Leaf & Beads rose bowl - marigold
- ___ 209. Raindrops dome ftd ruffled bowl - peach opal
- ___ **210. Orange Tree Scroll 7 pc. tankard water set - marigold - rare set**

- ___ 211. Question Mark bonbon – purple
 ___ 212. Question Mark bonbon - peach opal
 ___ 213. Stippled Fruits & Flowers bonbon - blue - rare stippled, nice
 ___ 214. Starfish compote - peach opal
 ___ **215. Ribbed Tornado vase - purple - very scarce & nice**
 ___ 216. Fine Cut & Roses rose bowl - ice blue
 ___ 217. Fine Cut & Roses rose bowl - green
 ___ 218. Fine Cut & Roses rose bowl - purple
 ___ 219. Fine Cut & Roses rose bowl - marigold
 ___ **220. Peacocks PCE bowl w/ribbed back - purple - pretty**
 ___ **221. Peacocks PCE bowl w/ribbed back - marigold - nice**
 ___ 222. Orange Tree powder jar – blue
 ___ 223. Australian Kingfisher master ruffled bowl - marigold
 ___ 224. Ftd Prism Panels vase - marigold
 ___ **225. NUART Chrysanthemum chop plate - marigold - nice stretchy irid., rare**
 ___ 226. Constellation ruffled compote - purple
 ___ 227. Constellation ruffled compote - white
 ___ 228. Grape & Cable pin dish - green
 ___ 229. Acorn Burrs spooner – purple
 ___ **230. Leaf & Beads nut bowl - aqua opal - super nice, very scarce & desirable**
 ___ 231. Pansy low ruffled bowl - lavender - nice
 ___ 232. Rustic 15" mid-size vase - green
 ___ 233. Rustic 15" mid-size vase - blue
 ___ 234. Rustic 15" mid-size vase - amethyst
 ___ **235. Hearts & Flowers ruffled bowl w/ribbed back - marigold - nice**
 ___ 236. Butterfly & Berry 8 pc. round berry set - marigold
 ___ 237. Poinsettia milk pitcher - smoke
 ___ 238. Poinsettia milk pitcher - marigold
 ___ 239. Iris buttermilk goblet - green
 ___ **240. Stippled Three Fruits 9" plate w/ribbed back - blue - scarce & nice**
 ___ **241. Stippled Three Fruits 9" plate w/ribbed back - purple - nice**
 ___ **242. Stippled Three Fruits 9" plate w/ribbed back - marigold**
 ___ **243. Holly ruffled bowl - teal green - rare color, nice**
 ___ 244. Holly ruffled bowl - amber - scarce color
 ___ 245. Holly ruffled bowl - marigold
 ___ **246. Dahlia 4 pc. table set - amethyst - nice set**
 ___ 247. Single Flower Framed tri-cornered crimped edge bowl - peach opal
 ___ 248. Lined Lattice 10" vase - purple
 ___ 249. M'burg Blackberry Wreath 7" ruffled bowl - green - radium
 ___ **250. M'burg Bernheimer Bros. Many Stars ruffled bowl - blue - very rare bowl, satin & nice**
 ___ 251. Singing Birds mug – blue
 ___ 252. Singing Birds mug - purple
 ___ 253. Singing Birds mug - marigold
 ___ 254. Stippled Singing Birds mug - custard w/ nutmeg stain - non carnival
 ___ **255. Fruits & Flowers 7" plate - purple - super pretty**
 ___ 256. M'burg Hanging Cherries spooner - amethyst
 ___ 257. M'burg Hanging Cherries spooner - marigold
 ___ 258. Wishbone PCE 10" bowl - green - nice
 ___ 259. Woodpecker wall pocket - marigold
 ___ 260. Stippled Three Fruits ruffled bowl w/ ribbed back - aqua opal - point glued on
 ___ 261. Stippled Three Fruits ruffled bowl w/ ribbed back - purple - nice
 ___ 262. Brocaded Acorn ice bucket w/ tongs - ice blue
 ___ 263. Singing Birds tumbler - green
 ___ 264. Singing Birds tumbler - purple
 ___ **265. Cosmos & Cane spittoon shaped compote - marigold - dark & very nice, rare**
 ___ 266. Leaf & Beads nut bowl w/ rayed interior - green
 ___ 267. M'burg Fleur De Lis collar based IC shaped bowl - green - radium
 ___ 268. Two Flowers lg size ftd ruffled bowl - blue - fantastic
 ___ 269. Plain Jane cream & sugar - aqua teal
 ___ **270. Zipper Loop kerosene lamp - marigold - 8" high, 5" base**
 ___ 271. Double Stemmed Rose dome ftd ruffled bowl - amethyst
 ___ **272. M'burg Big Fish IC shaped bowl - amethyst - light on irid.**
 ___ 273. M'burg Primrose ruffled bowl - green - radium
 ___ 274. Luster & Clear butter dish, creamer & cvd sugar - marigold
 ___ **275. Rose Show 9" plate - blue - minor pinpoint on rose, scarce**
 ___ **276. Rose Show 9" plate – marigold - minor nick on rose**
 ___ 277. Rose Show 9" plate - white - nice
 ___ 278. Grape & Cable candlestick - green
 ___ 279. Butterfly 4 1/2" ornament - marigold - age?
 ___ **280. Soda Gold 6 pc. water set - smoke - scarce set in this color**
 ___ 281. Tree Trunk 10" vase - green
 ___ 282. Tree Trunk 11" vase - marigold
 ___ 283. Rising Sun small size water pitcher - marigold
 ___ 284. Diamond Cut Shield water pitcher - marigold - cracked handle
 ___ **285. M'burg Trout & Fly 3 in 1 edge bowl - marigold - satin, chip on base**
 ___ 286. Luster Rose spooner – purple
 ___ 287. Luster Rose spooner - marigold
 ___ **288. Stippled Grape & Cable bonbon - emerald green - rare**
 ___ 289. Colonial #695 pair of candlesticks - celeste blue
 ___ **290. Peacocks ruffled bowl w/ribbed back - blue - pretty**
 ___ **291. Peacocks ruffled bowl w/ribbed back - marigold - pretty**
 ___ 292. Fenton Peacock at Urn ruffled compote - blue
 ___ 293. Grape & Cable shot glasses (2) - purple - choice
 ___ 294. N's Eight Sided bushel basket - marigold
 ___ **295. Stippled Good Luck ruffled bowl w/ribbed back – marigold - pretty**
 ___ 296. Good Luck ruffled bowl w/ BW back - purple
 ___ 297. Good Luck ruffled bowl w/ ribbed back - purple
 ___ 298. Good Luck ruffled bowl w/ ribbed back - marigold - super pretty
 ___ 299. Wreathed Cherry tumbler - marigold & Oriental Poppy tumbler - purple - choice
 ___ **300. Drapery candy dish - sapphire - very rare color & nice**
 ___ **301. Drapery candy dish - lime green - rare color**
 ___ 302. Drapery candy dish - ice green - very pretty
 ___ 303. Drapery candy dish - ice blue
 ___ 304. Drapery candy dish - white - nice
 ___ **305. Drapery candy dish - green - very rare & super**
 ___ **306. Drapery candy dish - blue - electric & nice**
 ___ 307. Drapery candy dish - purple - nice
 ___ 308. Drapery candy dish - marigold
 ___ 309. Starfish ruffled compote - peach opal
 ___ 310. Holly 9" plate – blue
 ___ 311. Windmill ruffled bowl - purple - super pretty
 ___ 312. Stork & Rushes butter dish, creamer & spooner - marigold - scarce

- ___ 313. Fishscale & Beads 6" plate - white - point chip
 ___ 314. Coin Dot 7" ruffled bowl - blue
 ___ 315. Old Rose Distillery Stippled Grape & Cable 9" plate w/ribbed back - green - nick on back of point
 ___ 316. Fenton's Grape & Cable fruit bowl w/Persian Medallion interior - marigold
 ___ 317. Ten Mums large ruffled bowl - blue - pretty
 ___ 318. Hearts & Flowers ruffled compote - white - nice
 ___ 319. Diamond Point Columns butter dish & creamer - marigold
 ___ **320. Diamond Lace 6 pc. water set - purple - pretty**
 ___ 321. Zipper Stitch wine bottle & 1 wine - marigold - sold together
 ___ 322. Formal hatpin holder - marigold
 ___ 323. Big Basketweave 10" vase - blue - non iridized
 ___ 324. Non American marigold butter dishes including: Garland Bows, Whirling Star, Nutmeg Grater, another which we don't know pattern - choice
 ___ 325. Heavy Grape chop plate - purple - minor nick on edge, but super
 ___ 326. Springtime spooner - marigold - dark, nice
 ___ **327. Heart & Vine 9" plate - blue - nice**
 ___ 328. Imperial Grape 9" plate - helios green
 ___ 329. Octagon compote - clambroth - nice
 ___ **330. Stag & Holly 9" spt ftd plate - marigold - nice**
 ___ 331. Persian Medallion 6" plate - marigold
 ___ **332. Concord ruffled bowl - marigold - very pretty**
 ___ 333. Butterfly bonbon - green
 ___ **334. Ftd Drapery Variant 8" vase - sapphire - extremely rare vase, has ribbed like a Four Pillar, and Drapery pattern**
 ___ 335. Ftd Drapery Variant 9" vase - marigold - like the last one
 ___ 336. April Showers 11 1/2" vase - green
 ___ 337. April Showers 11 1/2" vase - amethyst
 ___ 338. April Showers 11" vase - blue
 ___ 339. April Showers 10 1/2" vase - marigold
 ___ 340. Nippon ruffled bowl w/BW back - green - scarce, nice
 ___ 341. Carnival Glass mesh purse w/celluloid top - nice
 ___ 342. Carnival Glass round purse - nice
 ___ 343. Optic Flute 7" ruffled bowl - purple - pretty
 ___ 344. Optic Flute 7" ruffled bowl - marigold
 ___ **345. Nippon PCE bowl w/BW back - purple - scarce**
 ___ 346. Beaded Cable rose bowl - blue
 ___ 347. Beaded Cable rose bowl - marigold
 ___ 348. Soutache dome ftd ruffled bowl - peach opal
 ___ 349. Stippled Petals dome ftd flattened out bowl - peach opal
 ___ **350. Rose Show ruffled bowl - purple - scarce**
 ___ **351. Rose Show ruffled bowl - marigold**
 ___ 352. Ski Star dome ftd handgrip plate - peach opal
 ___ **353. Grape & Cable 4 pc. table set - green - check in base of creamer**
 ___ 354. Scroll Embossed w/File back 5" ruffled sauce - purple - super
 ___ **355. Peacock at the Fountain 4 pc. table set - purple - nick on sugar lid**
 ___ 356. Leaf Swirl ruffled compote - aqua teal
 ___ 357. Leaf Swirl ruffled compote - amber
 ___ 358. Lined Lattice 4 1/2" squatty vase - peach opal - nice
 ___ 359. Enameled Forget Me Not Stippled Petals dome ftd bowl - peach opal
 ___ **360. Daisy & Drape flared out vase - aqua opal - nice**
 ___ **361. Daisy & Drape turned in vase - marigold - nice**
 ___ 362. Daisy & Drape turned in vase - white
 ___ 363. Star of David ruffled bowl - purple - nice
 ___ 364. Carnival Glass beaded purses (5) - choice
 ___ **365. Isaac Benesch & Sons adv. ruffled bowl - purple - scarce**
 ___ 366. Grape Delight rose bowl - white
 ___ 367. Grape Delight rose bowl - blue
 ___ 368. Dugan Cherries 6" crimped edge plate - peach opal
 ___ 369. Dogwood Sprays dome ftd ruffled bowl - peach opal
 ___ **370. Good Luck PCE bowl w/ribbed back - blue - pretty**
 ___ 371. Double Stemmed Rose dome ftd round bowl - peach opal
 ___ 372. Moonprint butter dish - marigold
 ___ 373. Persian Medallion rose bowl - white - nice
 ___ 374. Holly ruffled compote - blue
 ___ **375. Good Luck 9" plate w/BW back - green - scarce, nice**
 ___ 376. Marigold tumblers including: Dugan Peacock at the Fountain (2), N's Peacock at the Fountain, Imperial Grape, Jeweled Heart, Grape & Cable, Lattice & Grape & Floral & Grape - choice
 ___ 377. Petal & Fan banana shaped 6" dish - peach opal
 ___ 378. Single Flower crimped edge square bowl - peach opal
 ___ 379. Pinched Swirl 4 1/2" vase - peach opal - swirls are completely opal, different
 ___ **380. Leaf Chain 9" plate - marigold - pretty**
 ___ 381. Leaf Chain 9" plate - white - nice
 ___ 382. Hatpins including: Butler's Mirror(2), Big Butterfly, Six Plums(3), Waves (chocolate), Basketflower, Flower Arcs, Roosters(3 in blue), Veiling, Bars & Beads, Butterflies, Top of the Morning, Border Path, Triads(2), Hearts & Cross & others.
 ___ 383. Leaf Rays ruffled nappy - peach opal
 ___ 384. Leaf Rays nappy - marigold
 ___ **385. Broken Arches 14 pc. punch set - marigold - scarce & nice**
 ___ 386. Kittens 2 sided up dish - marigold
 ___ 387. N's Bushel Basket - aqua opal - handle crack
 ___ 388. N's Bushel Basket - ice green - nice
 ___ 389. N's Bushel Basket - white - nice
 ___ 390. N's Bushel Basket - blue
 ___ 391. N's Bushel Baskets (2) - purple - choice
 ___ 392. N's Bushel Basket - marigold
 ___ 393. M'burg Strawberry Wreath ruffled compote - marigold - radium
 ___ 394. Dugan Cherries ruffled sauce - peach opal
 ___ **395. Poppy Pickle dish - blue - pretty**
 ___ **396. Poppy Pickle dish - purple - pretty**
 ___ 397. Fine Cut & Roses candy dish - ice blue
 ___ 398. Fine Cut & Roses candy dish - white
 ___ 399. Fine Cut & Roses candy dish - purple
 ___ **400. Sunflower spt ftd ruffled bowl - blue - electric & super, a beauty**
 ___ 401. Louisa rose bowl - amethyst
 ___ 402. Louisa rose bowl - green
 ___ 403. Ski Star ruffled sauce - peach opal
 ___ 404. Cut Cosmos & Grape Arbor tumblers - marigold - choice
 ___ 405. Garland rose bowl - marigold
 ___ **406. Grape & Cable hatpin holder - purple**
 ___ 407. Grape & Cable hatpin holder - marigold
 ___ 408. Imperial Grape water carafe - purple
 ___ 409. Fentonia spooner - marigold
 ___ 410. Acorn Burrs 8 pc. punch set - green - bowl is cracked
 ___ 411. April Showers 10" vase - green
 ___ 412. April 11" vase - marigold
 ___ **413. Peacock & Grape 3 in 1 edge bowl - lime green opal - scarce color**

- ___ 414. Persian Garden 6" plate - white - has Pool of Pearls back
- ___ 415. Persian Garden 6" plate - marigold
- ___ **416. Grape & Cable small size fruit bowl - marigold - pretty**
- ___ 417. Miniature Morning Glory 6" vase - purple - chip on top edge
- ___ 418. Miniature Morning Glory 5" vase - marigold
- ___ 419. Carnival Glass beaded purses (5) - choice
- ___ 420. Basketweave Open Edge JIP basket - red
- ___ 421. Diamond Point 7" squatty vase - purple
- ___ 422. Farmyard rose bowl - blue - contemporary
- ___ 423. 1981 HOACGA Grape & Cable candle lamp - red
- ___ 424. 1982 ICGA Frolicking Bears spittoon - red
- ___ 425. 1981 ICGA Frolicking Bears spittoon - aqua opal
- ___ 426. 1983 ICGA Frolicking Bears spittoon - vaseline opal
- ___ 427. 1983 ICGA Frolicking Bears spittoon - lime green opal
- ___ 428. 1982 ACGA Seacoast spittoon - peach opal
- ___ 429. Grapevine Lattice 7" ruffled bowl - white
- ___ **430. Scroll Embossed miniature ruffled compote - amethyst - pretty**
- ___ 431. Long Thumbprint 6" squatty vase - amethyst
- ___ **432. Beaded Cable rose bowl - aqua opal**
- ___ 433. Beaded Cable rose bowl - blue
- ___ 434. Beaded Cable rose bowl - green
- ___ 435. Beaded Cable rose bowl - marigold
- ___ 436. Rustic 12" mid-size vase - green
- ___ 437. Australian Butterfly Bower 6" dome ftd bowl - purple
- ___ **438. Orange Tree 9" plate - marigold**
- ___ 439. Field Thistle spooner - marigold
- ___ **440. Wild Strawberry handgrip 7" plate - purple - pretty**
- ___ 441. Corinth 8 1/2" JIP vase - amethyst
- ___ 442. Orange Tree loving cup - green - fantastic irid.!
- ___ **443. Orange Tree loving cup - blue**
- ___ 444. Orange Tree loving cup - marigold
- ___ 445. Open Rose round bowl - amber
- ___ 446. Dragon & Lotus spt ftd IC shaped bowl - purple - pretty, cleats have some minor damage
- ___ 447. Dragon & Lotus spt ftd IC shaped bowl - green - super
- ___ 448. Daisy Squares ftd rose bowl - green
- ___ 449. Starfish crimped edge compote - peach opal
- ___ 450. Singing Birds mug - marigold
- ___ 451. Fenton Panels 12" vase - blue
- ___ **452. Drapery rose bowl - aqua opal**
- ___ 453. Peacock & Grape spt ftd IC shaped bowl - green
- ___ 454. Mikado ruffled compote - marigold
- ___ 455. Grape & Cable Variant PCE bowl w/ plain back - green
- ___ 456. Spindle Diamond candlestick - amethyst
- ___ **457. Acanthus chop plate - marigold - nice**
- ___ 458. Strawberry ruffled bowl w/BW back - purple
- ___ 459. Lattice & Daisy ruffled hat - white
- ___ 460. Fan gravy boat - peach opal
- ___ 461. Spirilex 9" vase - peach opal
- ___ **462. Stippled Three Fruits spt ftd ruffled bowl - aqua opal - scarce, nice**
- ___ 463. Flute toothpick - purple
- ___ 464. Diamond Rib 11" vase - blue
- ___ 465. Three Fruits 9" plate w/ plain back - green - pretty
- ___ 466. Three Fruits 9" plate w/BW back - purple
- ___ 467. Fenton's Thin Rib 13" vase - marigold
- ___ 468. Blackberry Spray square shaped basket - aqua - 2 sets of Blackberries
- ___ 469. Grape Leaves ruffled bowl - green
- ___ 470. Howard Furniture Co. Four Pillars 11" vase - green - scarce
- ___ 471. Diamond Lace 7 pc. water set - purple - pitcher cracked
- ___ 472. Double Stemmed Rose dome ftd IC shaped bowl - white - pretty
- ___ **473. Fanciful low ruffled bowl - purple - nice**
- ___ 474. Fanciful low ruffled bowl - marigold
- ___ 475. Four Flowers ruffled sauce - purple - pretty
- ___ 476. Fenton's Peacock at Urn ruffled bowl - blue
- ___ 477. Dahlia creamer - white
- ___ 478. Six Petals tri-cornered bowl - peach opal
- ___ 479. Beaded Bags (7) - choice
- ___ 480. M'burg Hobnail Swirl rose bowl - marigold
- ___ 481. Windflower ruffled bowl - blue
- ___ **482. Fenton's Grape & Cable spt ftd 9" plate - ice green - scarce & nice**
- ___ 483. Fenton's Grape & Cable spt ftd 9" plate - green - nice
- ___ 484. Grape & Cable pin tray - purple
- ___ 485. Stippled Rays 6" plate - marigold
- ___ 486. Grape & Cable butter dish - marigold
- ___ 487. Scroll Embossed lg size ruffled compote - marigold
- ___ **488. Grape & Cable cvd compote - purple - minor nick under lid**
- ___ 489. Beaded Carnival bags (7) - choice
- ___ 490. Fruits & Flowers ruffled sauce - green
- ___ 491. N's Thin Rib 7" squatty vase - green
- ___ **492. Peacocks ruffled bowl w/ribbed back - blue**
- ___ 493. Imperial Grape 6" plate - marigold
- ___ 494. Peacock at the Fountain spooner - white
- ___ 495. M'burg Cosmos 6" IC shaped sauce - green - radium
- ___ **496. Sailboat deep round sauce - amber red slag - scarce**
- ___ 497. Stippled Petals dome ftd ruffled bowl - peach opal
- ___ 498. Ripple 16" vase - marigold - has 4 7/8" base
- ___ 499. Beaded Carnival purses (5) - choice
- ___ **500. Stippled Grape & Cable Variant 9" plate w/ribbed back - marigold - super, beautiful**
- ___ 501. Peacock at the Fountain berry dishes (3) - purple - choice
- ___ 502. Paneled Diamond & Bows 7" vase - blue
- ___ 503. Persian Medallion 9" plate - blue - scarce
- ___ 504. N's Thin Rib 10" vase - green
- ___ **505. Cobblestone ruffled bowl - purple - nice**
- ___ 506. Persian Medallion card tray shaped bonbon - blue - pretty
- ___ 507. Grape & Cable sweetmeat - purple
- ___ 508. Grape Delight rose bowl - purple
- ___ 509. Open Rose 9" plate - marigold
- ___ 510. Heavy Grape 8" plate - purple - pretty
- ___ 511. Stippled Rays creamer & sugar - marigold
- ___ 512. Peacock Tail bonbon - amethyst
- ___ 513. Good Luck PCE bowl w/BW back - green
- ___ 514. Dragon & Lotus collar based deep round bowl - marigold
- ___ **515. M'burg Peacock berry sauce - amethyst - radium**
- ___ 516. Basketweave Open Edge ruffled basket - lime green w/marigold overlay
- ___ 517. Basketweave Open Edge ruffled basket - vaseline w/marigold overlay
- ___ 518. Pinecone 6" plate - marigold
- ___ 519. Three Fruits PCE bowl w/ plain back - purple
- ___ 520. Misc. Carnival Beaded items - all to go
- ___ 521. Fenton's Thin Rib 16" vase - blue
- ___ 522. Scroll Embossed deep round bowl - purple
- ___ 523. Diamond & Column 16" vase - blue
- ___ 524. Fan round bowl - peach opal
- ___ **525. Vintage dome ftd ruffled bowl - celeste blue - fantastic piece w/super irid., a beauty**
- ___ Lots 526 to 550 all box lots of Misc. Carnival Glass

Seeck Auctions

P.O. Box 377
Mason City, Iowa 50402

Carnival Glass Auction

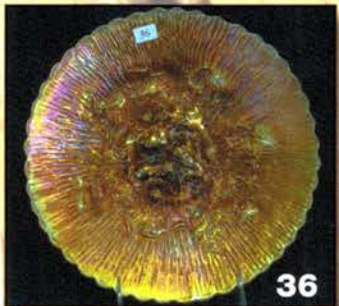
Saturday, October 30th, 2010 - 9:30 AM
Mason City, Iowa

PRESORTED
FIRST CLASS MAIL
U.S. POSTAGE
PAID
MAIL EXPEDITORS



50

T4 P1 232
Lee Markley
PO Box 306
Mentone IN 46539-0306



36



91

92

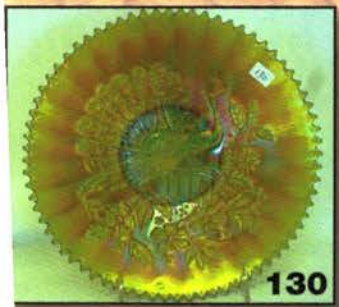
334



100



125



130



190



360

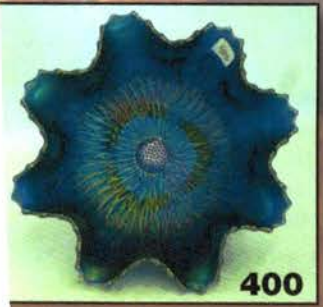
230

53

452



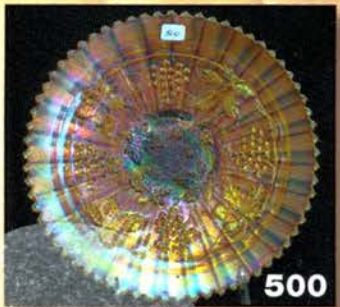
265



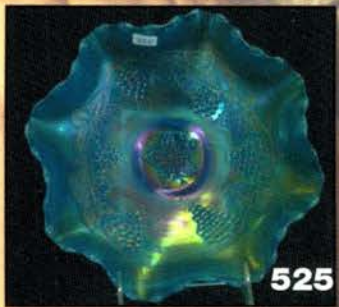
400



442



500



525