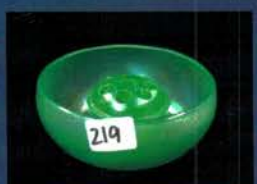
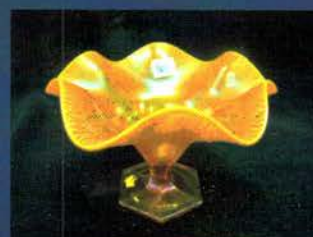




# Stretch Glass Auction

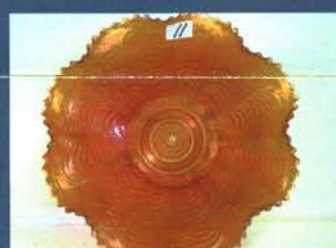
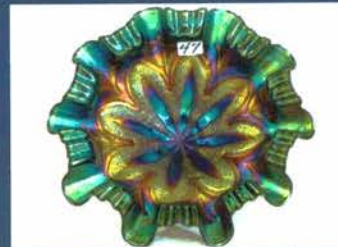
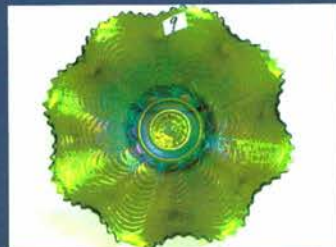
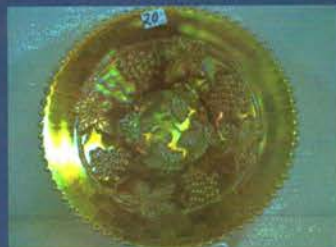
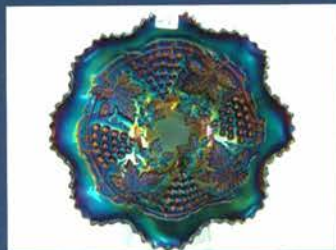
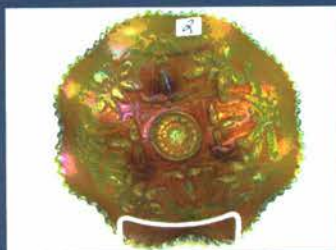
Friday- August 13th at 10:30 am  
Lance and Pat Hilkene collection

To view HUNDREDS of pictures & LISTING go to [www.jimwrodauction.com](http://www.jimwrodauction.com)

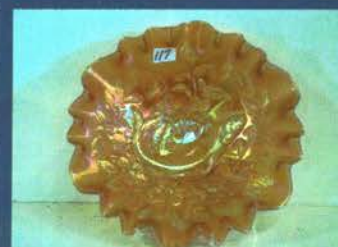
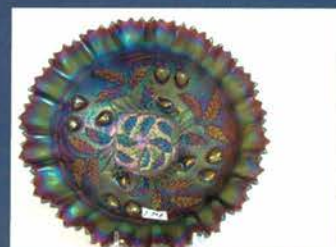
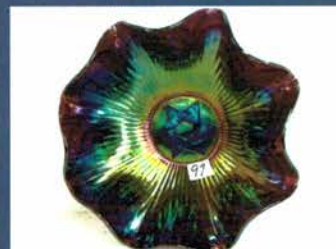




# WWWCGA Carnival Glass Convention 2010 Greenville, Ohio

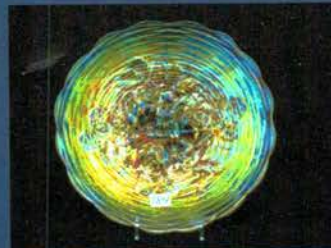
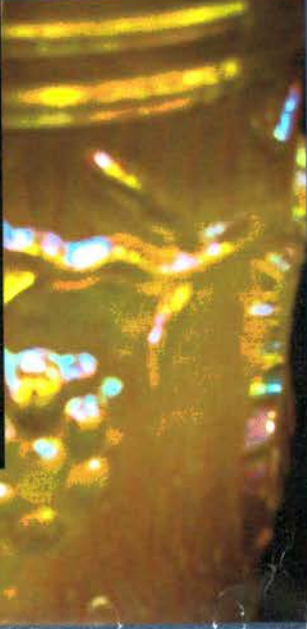
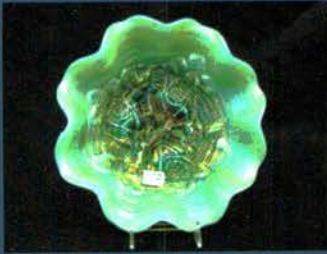


To view HUNDREDS of pictures & LISTING go to [www.jimwrodaauction.com](http://www.jimwrodaauction.com)

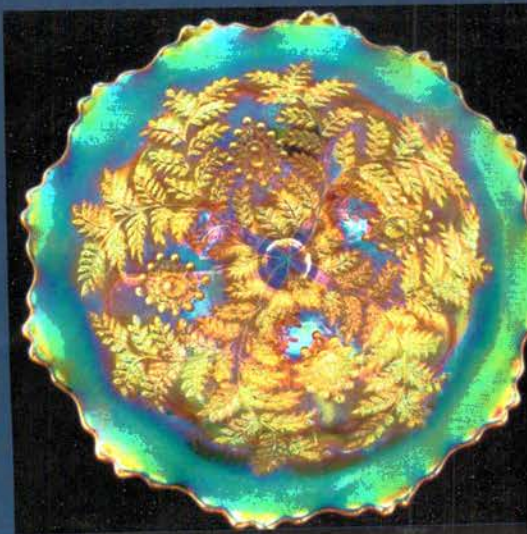
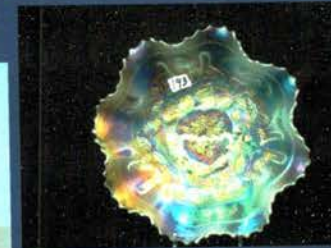
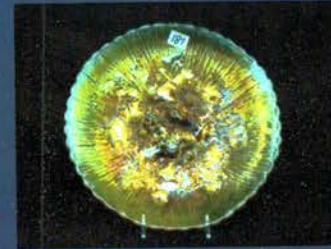




# WWWCGA Carnival Glass Convention 2010 Greenville, Ohio



To view HUNDREDS of pictures & LISTING go to [www.jimwrodauction.com](http://www.jimwrodauction.com)

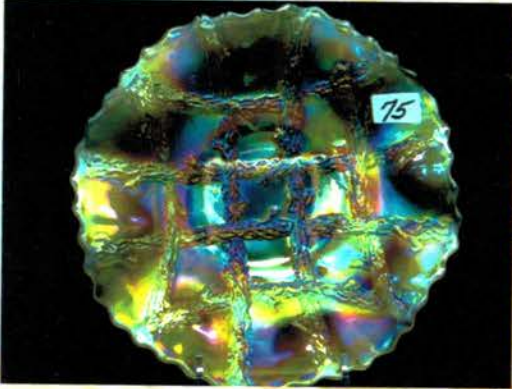




*Jim Wroda Auction Services, L.P.D.*  
 5239 ST RT 49 S  
 GREENVILLE, OHIO 45331  
 937.548.7835

UNRESORTED  
 FIRST CLASS MAIL  
 U.S. POSTAGE  
**PAID**  
 CELINA, OH  
 PERMIT NO. 99

**FIRST CLASS POSTAGE PAID**



6-8\*\*\*\*\*AUTO\*\*MIXED AADC 458  
 LEE MARKLEY  
 PO BOX 306  
 502 N BROADWAY ST  
 MENTONE IN 46539-9531



Volume 11, Series 2010

**WWWCGA Carnival Glass Convention**  
**August 11th 12th 13th 14th 2010 (All day each day!)**

Welcome reception Wednesday August 11th at 6PM at facility  
 Please see website for ALL convention activities and times!

**2010 WWWCGA Convention location:**

**Greenville Auction Center- Greenville, Ohio**

**Hosting Hotel: Greenville Inn - Greenville, Ohio 937.548.3613**

**Doubles/Queens > 64.95 and Kings > 69.95**

**Just mention the carnival glass convention for the correct block of rooms. Pets welcome!**

**\*\*\*\*\*Mail, E-Mail, Phone and Absentee Bids Policy:\*\*\*\*\***

We do accept absentee bids, Phone bids (\$500.00 minimum bid) and left bids. All bids will be bid competitively against the audience. ALL absentee bids must be to us no later than 2 days prior to the auction, otherwise we will not guarantee them being entered into our system. All SUCCESSFUL absentee, phone and left bids are subject to a \$7.00 convenience fee, plus postage and insurance. We will contact you within a couple of days after the auction. Please do not call us to see if you won an item. Laurie will call you if your bid was successful. Extra calls coming in just slows us down on contacting people. If damage is found during the auction or preview we will cancel your bid. If manufacture problems bother you such as air bubbles, pulled points, soda ash, tool marks, or any other manufacturing flaw, please be specific in your mail bids or email bids. If there is a manufacture flaw on an item that we feel is truly distracting, we have noted that in the listing already. Auction Company has the right NOT to execute an absentee bid for any reason. ALL bids are due 2 days prior to the auction. ALL items must be paid for within 7 business days after notification.

**PLEASE NOTE:** Laurie will get your items to you as fast as possible but, please allow 7 to 14 days for your items to be shipped.

To view more pictures & listing please visit our website [www.jimwrodauction.com](http://www.jimwrodauction.com)

**Terms & Conditions:** Cash, Travelers, business or personal checks w/I.D. Visa/ MC & Discover w/ a 3% clerking fee



*Jim Wroda Auction Services*

ST RT 49 S Greenville, Ohio 45331

**Jim Wroda Auctioneer**

Rapid Printing — Greenville, Ohio — 937-548-1010

August 13, 2010 Stretch Glass Listing

351	Imperial blue ice/smoke 2-handled candle bowl	12 1/2	47	N-wood mari. card tray paneled 3 1/2" base
352	Imperial marigold 2-handled candle bowl	30	48	N-wood jade blue card tray paneled 3 1/2" base
153	Imperial marigold 2-handled candle bowl	50	49	N-wood wisteria card tray paneled 3 1/2" base
304	Imperial blue ice/smoke paneled basket w/4" base	20	50	N-wood celeste blue card tray paneled 3 1/2" base
455	Imperial blue ice/smoke plain jane basket 2-3/4" e	50	51	Fenton topaz laurel leaf cheese dish stemmed
256	Imperial clambroth double scroll console bowl	70	52	Fenton tangerine 5-rings bowl cupped in 2 3/4" bowl
17/49	pair Fenton florentine green candlesticks #314	10	53	Jeanette gray/white dome ftd 8 1/4" bowl-cupped
158	pair Fenton persian pearl candlesticks-#314	40	54	N-wood white JIP square tree bark foot 8 1/2"
159	Pair Fenton celeste blue candlesticks #314	25	55	N-wood topaz comport flat card tray shape octonagal tree bark foot 6"
3510	pair Fenton tangerine candlesticks #316	25	56	N-wood topaz comport flat card tray shape octonagal tree bark foot 6"
22 1/2 11	pair Fenton celeste blue candlesticks #316	25	56	N-wood topaz comport flat card tray shape octonagal tree bark foot 6"
3512	pair Fenton topaz candlesticks #316	55	57	unknown black amythest JIP shaped ashtray Could be European 7 1/4" polish pontil
12 1/2 13	pair Fenton marigold candlesticks #314	25	58	Fenton florentine green Melon rib bowl #857 9 1/2" base 3 1/3"
22 1/2 14	pair Fenton persial pearl candlesticks #317 with decoration	65	59	Fenton celeste blue tumbler x2-2" base 4 1/2" high 3 1/4" wide w/cobalt handles
4515	N-wood sapphire blue candlesticks 10" #696	27 1/2	60	US Glass white hat shaped bowl 9 1/2"
5016	pair Dugan-Diamond mari. candlesticks 8 3/4"	15	61	Fenton celeste blue small plain rose bowl w/ flower frog-3" base
5517	pair Dugan-Diamond harding blue candlesticks " 8 3/4"	5	62	Fenton mari 4 1/2" wide cheese dish
5018	pair fenton aquamarine Double Dolphin #1623 candlesticks. One with damage.	67 1/2	63	Fenton tangerine bowl flared 9" wide 2 3/4" base <del>NS</del>
9519	pair Fenton florentine green Double Dolphin #1623 candlesticks	35	64	US Glass ice blue hat shaped bowl 9"
7 1/2 20	pair Fenton aquamarine #318 candlesticks One with damage	50	65	Fenton aquamarine melon rib vase 8 3/8" high 3 3/4" base
521	pair Fenton celeste blue #315 candlesticks	NA	66	Fenton velva rose melon rib fan vase 7 1/8" high 9 3/4" wide 3 3/4" base
1522	pair Fenton mari. #315 candlesticks	15	67	N-wood sapphire blue plate rayed 11 1/2"-3 3/4" base. Gold decor
2023	Fenton mari. melon rib flared bowl 3 1/2" base	10	68	N-wood sapphire blue bowl flared 9 3/4" wide 3 3/4" base
2 1/2 24	Imp. blue ice/smoke mayonnaise-3 1/8" base with leaf wheel cut	60	69	Fenton velva rose bowl #512 ringed 3 1/2" base flared 8 1/2"
1 1/2 25	Fenton velva rose/pink covered bon bon #10	32 1/2	70	US Glass celeste blue bowl #8076 Open Work 8 3/4"
4026	Fenton topaz mayonnaise w/underplate & ladle	45	71	N-wood jade blue deep bowl (punch?) 5" high 10" wide-3 1/4" base
6527	Fenton celeste blue 7-pc. nut cup set #923	17 1/2	72	N-wood topaz ICS bowl 2 1/4" high, 3 3/4" base 11" wide
1528	N-wood mari. compote w/tree bark base cupped in	20	73	N-wood jade blue bowl 11" wide rolled down edge 3 1/4" base
12 1/2 29	US Glass ice blue large handled server	20	74	N-wood topaz plate 27 ribs 9 1/2", 3 3/8" base
4030	Imperial blue ice/smoke large handled server w/floral wheel cut	50	75	N-wood jade blue bowl cupped in 27 ribs 3 3/8" base 7" wide
3531	fenton wisteria large handled server	22 1/2	76	N-wood? jade blue bowl flared stemmed 3" base 8 3/4" wide, 3" high
12 1/2 32	Jeannette mari. large handled server	25	77	N-wood? ice green ICS bowl cupped in 11 1/4" wide 2 1/2" high, 3 3/8" base
4033	pair. N-wood sapphire blue handled candlesticks #675	20	78	N-wood jade blue bowl Optic Rays 9 1/2" wide, 3 1/4" high, 3 3/4" base
37 1/2 34	N-wood jade blue flared 8 paneled sherbet	30	79	US glass ice green plate Optic Rays 8" wide, 4 1/2" base starred
4035	Dugan-Diamond red large console bowl	30	80	Dugan-Diamond ice green comport saw toothed stem 6" tall, 3 7/8" base cupped in
2536	Fenton celeste blue ashtray w/match holder #202	42 1/2	81	Fenton florentine green melon rib fan vase 5 1/4" tall, 8 1/4" wide, 3" base
2037	US Glass persian pearl comport #179	22 1/2	82	Fenton florentine green candy flared & ruffled 2 1/2" base, 6 1/2" wide, 2 3/4" high
6038	Fenton red bowl flared & cupped base 2 3/4"	45	83	Fenton florentine green bowl, tulip flared 9" wide 2 3/4" base
4039	Fenton red bowl flared & cupped base 3 1/4"	(27 1/2)	84	Fenton florentine green bowl, 2 3/4" base, 7" wide, w/ice green flower frog
4540	Fenton red bowl flared & cupped base 3 1/4"	22 1/2	85	Fenton florentine green vase 2 1/2" base, 5" high, 4 1/2" wide
4041	Fenton red bowl flared & cupped base 3 1/4"	15	86	Fenton mari. vase 3 1/2" base, 6" high, 6" wide
4542	Fenton red bowl flared & cupped base 2 1/4"	30	87	Fenton celeste blue vase cupped in 4" base, 8" high 4" opening. Gold Decor.
7043	Imp. red Chesterfield sherbet & underplate			
12 1/2 44	Imp. irid. crystal large 10 3/4" bowl signed Iron Cross			
27 1/2 45	Imp. irid. crystal 9" square bowl signed Iron Cross			
1546	Fenton celeste blue sherbet stemmed			

- 22 1/2
- 88 Fenton velva rose vase 3 3/8" base, 6" high, 6" wide.
- 89<sup>20</sup> Fenton celeste blue vase 2 1/2" base, 5" high, 4 1/2" wide
- 15 90 Fenton mari. vase 3 1/2" base, 6" high, 6" wide
- 20 91 Fenton velva rose fan vase diamond optic 3" base, 5" high, 6" wide. Domed base
- 17 1/2 92 Fenton celeste blue fan vase rayed interior, 3" base, 5" high, 6" wide. domed base.
- 10 93 Fenton? celeste blue fan vase panel interior 3" base, 5" high, 6" wide. Flat base silver decor-ships.
- 42 1/2 94 Fenton mari. cigarette holder #566 oval 2 1/2" wide, 3 1/4" high, 4 3/4" base
- 80 95 Fenton florentine green cigarette holder #554 round, 2" wide, 3 1/4" high, 4 3/4" base.
- 20 96 Imp. green ice/teal Chesterfield compote 4" high, 3 1/2" base, 6" wide.
- 45 97 Fenton? celeste blue handled server 4" high, 6 1/2" wide. Small server.
- 2 98 N-wood sapphire blue paneled bowl, 2 1/4" base, 2" high, 4 1/2" wide. Rough on inside edge.
- 10 99 Fenton celeste blue square hat, 2 1/2" base, 2 1/2" high, 6 3/8" wide.
- 25 100 N-wood sapphire blue flattened card tray, 3 1/8" tree bark base, 8 sided, 3 1/8" high, 5 3/4" wide
- 42 1/2 101 Fenton velva rose flower pot 3 1/8" base, 4 5/8" high, 4 3/4" wide.
- 12 1/2 102 N-wood russet covered almond #691, 6 1/2" wide, 2 1/2" high, 6 1/8" base
- 10 103 Fenton celeste blue sherbet 2 1/2" base, 4 1/2" wide, 3" high
- 30 104 N-wood sapphire blue signed compote cupped in 12 sided base, 8" wide, 5" high
- 22 1/2 105 N-wood topaz compote 21 ribs, 7 1/4" high, 3 3/8" base, 5 3/8" wide
- 17 1/2 106 N-wood russet 1/2 lb. candy
- 15 107 N-wood russet 1/2 lb candy
- 20 108 Fenton ice green 3/4 lb. candy
- 52 1/2 109 Fenton celeste blue 1/2 lb. candy
- 10 110 Unknown mari. 1/2 lb. candy paneled flutes
- 57 1/2 111 Fenton tangerine 1/2 lb candy #835
- 32 1/2 112 Fenton florentine green 1/2 lb candy #835
- 50 113 N-wood topaz 1 lb candy #636
- 75 114 N-wood sapphire blue 1 lb candy #636 w/gold decor
- 25 115 Fenton florentine green bon bon #643 #1
- 22 1/2 116 Fenton florentine green bon bon #643 #2
- 35 117 N-wood russet bon bon #643
- 40 118 N-wood jade blue bon bon #643
- 20 119 Fenton celeste blue bon bon #643 #1
- 20 120 Fenton celeste blue bon bon #643 #2
- 15 121 Fenton celeste blue bon bon #643 #3
- 20 122 Fenton celeste blue bon bon #643 #4
- 25 123 Fenton mari. bon bon #643
- 15 124 N-wood sapphire blue bon bon #643
- 17 1/2 125 N-wood sapphire blue bon bon #643
- 17 1/2 126 Fenton celeste blue bon bon #943 floral decor on lid
- 10 127 Fenton mari. bon bon #943
- 35 128 N-wood sapphire blue compote #644 cupped rose bowl 15 panels
- 5 129 Unknown clear iridescent 9" tall cov'd compote 3 1/4" base, 5 1/8" wide
- 65 130 Fenton celeste blue puff box mini size 3" wide, 1 3/4" base, 3 3/4" high
- 45 131 Fenton florentine green puff box w/button finial, 5" wide, 5 1/2" high, 2 3/8" base
- 7 1/2 132 Fenton celeste blue #1 bowl #545 cupped, 5 1/4" wide, 2" high, 2 5/8" base
- 7 1/2 133 Fenton celeste blue #2 bowl #545 cupped, 5 1/4" wide, 2" high, 2 5/8" base.
- 5 134 Fenton florentine green bowl cupped in mini size, 4" wide, 1 5/8" high, 2 5/8" base
- 60 135 Fenton wisteria bowl cupped in mini size 4" wide, 1 5/8" high, 2 5/8" base
- 17 1/2 136 Fenton topaz lemon server #66, 2 3/8" high, 5" wide
- 40 137 Fenton velva rose flower pot w/underplate, 4 1/2" high, 6" wide, 3" base
- 105 138 Fenton topaz breakfast set #3
- 140 139 Fenton tangerine sugar #2 applied handles
- 10 140 Unknown sapphire blue Adams rib compote, 6 1/4" wide, 3 1/2" high, 3 1/8" base
- 5 141 Fenton ice green sherbet, 3 3/4" wide, 2 1/2" base, 3 1/2" high
- 65 142 European ice blue mustard jar w/opening for spoon and lid, 2 1/2" wide, 4 1/2" high
- 90 143 Imp. teal rib optic breakfast set
- 15 144 Fenton ice green Laurel Leaf six sided plate 7"
- 25 145 Fenton celeste blue compote #260, 6" wide, 6" high, 3 1/4" base
- 27 1/2 146 N-wood ice blue card tray compote 15 panels, 7" wide, 2 3/8" high, 3 3/8" base
- 7 1/2 147 N-wood ice blue compote 15 panels, 6" high, 3 3/8" base, 3" high
- 25 148 N-wood vaseline flute nut cup, not iridized
- 25 149 Fenton velva rose large handled server
- 65 150 Fenton celeste blue night set w/tumbler
- 50 151 Fenton celeste blue night set with a large tumbler
- 25 152 Fostoria? clear/ice blue lidded candy 10" high, 6 1/4" wide, 3 3/4" base. Brocaded pattern?
- 25 153 Fenton velva rose melon rib rose bowl, 7 1/2" wide, 5 1/8" high, 4" base.
- 155 154 Fenton persian pearl perfume bottle. Dauber missing from stopper
- 30 155 N-wood sapphire blue square cupped in bowl, square tree bark base, 3" base, 6" wide
- 70 156 Fenton celeste blue compote flared w/sides pulled up, 6 1/4" high, 8 1/2" wide, 3 5/8" base
- 45 157 Imp. marigold on milk bowl cupped in 8" wide, 2 3/4" high, 3 3/4" ground base
- 165 158 Imp. marigold on milk bowl ICS 10 1/2" wide, 2 3/8" high, 3 3/4" ground base
- 55 159 US Glass opaque yellow cylinder vase 8 1/4" high, 4" wide, 3" base
- 70 160 Fenton tangerine vase #835 hex base, 5" wide, 5 3/4" high, 3 1/4" base
- 75 161 Fenton tangerine vase #835 hex base ruffled 7" wide, 5" high, 3 1/4" base
- 17 1/2 162 Fenton velva rose vase #835 hex base ruffled 5 3/4" high, 6" wide, 3 1/4" base
- 32 1/2 163 Fenton celeste blue vase 2 1/2" base, 5 1/4" high, 4 1/2" wide
- 20 164 Fenton celeste blue vase #400 ruffled, 2 3/4" base, 5 1/4" wide, 5 1/2" high
- 20 165 Fenton celeste blue vase #400 ruffled 2 3/4" base, 5 1/4" wide, 5 1/2" high
- 22 1/2 166 Fenton celeste blue vase #400 square top, 2 3/4" base, 5 1/4" wide, 5 1/2" high
- 125 167 Fenton tangerine vase #573 six sided rib optic, 5 1/8" wide, 8" high, 3 3/4" base
- 168 out
- 85 169 Fenton aquamarine mayonnaise #923 with ladle
- 40 170 Fenton celeste blue mayonnaise #923 with ladle

- 65
- 171 Fenton florentine green mayonnaise #923 w/ladle
- 172 Fenton topaz mayonnaise #923 w/ladle
- 173 Fenton florentine green compote #923, 6" wide, 3 3/4" high, 3 3/4" base, oval shape
- 174 N-wood celeste blue sherbet w/underplate, 8" wide ground foot w/inset
- 175 N-wood celeste blue sherbet w/underplate, 8" wide ground foot w/inset
- 176 Dugan-Diamond green candlesticks, 8 3/4" high, 2" base
- 177 Fenton persian pearl salver #643, 6 1/2" wide, 2 5/8" high, 3 1/2" base
- 178 Fenton persian pearl compote cupped in #643, 5" wide, 3 1/2" high, 3 1/2" base
- 179 Fenton persian pearl stemmed compote 2-sides pulled up, 6 1/4" wide, 5" high, 2 3/4" base
- 180 Fenton persian pearl single portly candlestick, 6 1/4" high, inclusion in base
- 181 US Glass white comport stemmed 4 1/2" high, 6 1/4" wide, 3 1/4" base
- 182 US Glass white vase #176 flared & cupped, 5 1/2" wide, 5 3/8" high, 3 1/8" base
- 183 Imp. white compote Chesterfield 4 3/8" high, 5 5/8" wide, 3 5/8" base
- 184 Imp. white bowl Iron Cross Chesterfield, 8 3/8" wide, 3" high, 3 1/4" base. Unlisted
- 185 US Glass? white covered relish 4 1/4" wide, 3 1/2" high, 4 1/8" base. Unlisted.
- 186 Fenton persian pearl candlesticks Cornacopia 5 1/2" high
- 187 Fenton persian pearl 1 lb. candy jar
- 188 Fenton persian pearl covered bon bon
- 189 US Glass white compote low-footed 4 1/2" wide, 4" high, 2 3/4" base
- 190 Imp. white compote Chesterfield flared & turned down 3 1/2" high, 6 1/2" wide, 3 5/8" base
- 190a Unknown clear/green low console bowl turned down 11" wide 2" high 4" base
- 191 Imp. red bowl 9" wide, 3" high, 12 panels
- 192 N-wood sapphire blue turned down console bowl 10 1/2" wide, 3" high, 3 1/4" base. Gold decor
- 193 N-wood jade blue flared compote 8 1/2" wide, 3 1/4" high, 3" stemmed base
- 194 Fenton velva rose cupped in console bowl ribbed 9 1/2" wide, 5" domed base
- 195 Unknown celeste blue large compote 9 1/2" wide, 4 3/4" tall, 4 3/4" stemmed base, Gold decor.
- 196 N-wood jade blue cupped in bowl 8" wide, 3 1/2" high, 3 3/4" ground base
- 197 N-wood white JIP tree bark vase compote 8 1/2" wide, 4" high
- 198 N-wood sapphire blue optic rib vase 6' wide, 5 3/4" high, 4" base-Tricorner top
- 199 N-wood ice blue Diamond Optice vase 6" high, 4 5/8" wide, 4" base. Flared top
- 200 N-wood sapphire blue Diamond Optic vase 5 1/2" high, 5" wide, 4" base. Spittoon shaped.
- 201 N-wood ice blue no pattern vase, 5" high, 5" wide, 4" base. Spittoon shaped.
- 202 N-wood ice blue Diamond Optic vase 5" high, 6" wide, 4" base. Tricorner top.
- 203 Fenton white bon bon #543
- 204 Fenton white candy jar #9, 9 3/4 lb.
- 205 Fenton florentine green bon bon #543
- 206 N-wood topaz compote tree bark base, 3 1/2" high, 5 1/4" wide, 3 1/4" base.
- 207 Dugan white vase pinched in teo sides 6" high, 2 1/4" top opening, 2 1/2" base
- 208 Lancaster white bon bon, 6 1/4" wide, 5 3/8" high, 3" base
- 209 Fenton? celeste blue flared bowl, 7 3/4" wide, 3 1/4" high, 4 1/2" base
- 20 US Glass opaque yellow footed compote 8 3/4" wide, 3" high, 3 1/2" base
- 211 Unknown royal blue (Renningers) large flared bowl, 10" wide, 3" high, 3 3/4" base
- 212 Fenton celeste blue compote #643, 5" wide, 3 3/4" high, 3 1/2" base
- 213 Fenton persian pearl cornucopia candlesticks pair
- 214 N-wood sapphire blue large hex footed paneled bowl, 12" wide, 4" high, 4 1/2" base
- 215 Fenton florentine green ICS bowl, 7 1/2" wide, 1 1/4" high, 2 1/4" base
- 216 Imp. ice green 4-paneled plates, 7 1/2" wide, 3 3/4" ground base
- 217 Fenton persian pearl bud vase square top 5 1/4" wide, 5 3/4" high, 2 3/4" base
- 218 Fenton velva rose Diamond Optic plate 8 sided 8" wide.
- 219 Fenton ice green rose bowl w/8 hole frog, 4 3/4" wide, 2 1/4" tall, 2 3/4" base
- 220 Fenton celeste blue rose bowl w/8 hole frog, 4 3/4" wide, 2 1/4" tall, 2 3/4" base
- 221 Fenton mari. rosebowl w/8 hole frog, 4 3/4" wide, 2" tall, 2 3/4" base
- 222 N-wood sapphire blue paneled berry bowl 4 1/2" wide, 2" high, 2 1/4" base
- 223 Fenton celeste blue rib optic creamer & sugar
- 224 Fenton velva rose melon rib fan vase 9 3/4" high 4" base
- 225 Fenton looks tangerine plate, 8 5/8" wide, 3 1/4" base-two sides up.
- 226 Imperial mari. 3-plates-misc.
- 227 Imperial mari. Chesterfield sherbert & underplate
- 228 Imp? ice green plate 8" Tulip & Circle etching
- 229 Fenton? celeste blue Laurel Leaf plate 6 1/4"
- 230 US Glass lt. marigold small compote 5 1/4" wide, 2 3/4" high, 2 3/4" base

August 14, 2010 Carnival Glass Listing

75 1	Nwood 8" olive green Wishbone ft'd bowl.	85	49	Dugan PO Flowers & Frames tri corner CRE bowl
45 2	Nwood 8" dark green Wishbone ft'd bowl. Nice rich color!	40	50	Dugan PO Double Stem Rose ICS bowl
95 3	Nwood 8" elec purple Wishbone ft'd bowl. Nice!	55	51	Dugan white Double Stem Rose 3-1 edge bowl
60 4	Nwood 8" mari Wishbone ft'd bowl.	45	52	Dugan White Double Stem Rose ruffled bowl
50 5	Nwood 8" elec blue Embroidered Mums bowl. Super!	20	53	Dugan mari Double Stem Rose deep bowl
185 6	Nwood 9" elec purple Embroidered Mums ruffled bowl Bright irid!	85	54	Dugan PO Ski Star CRE Plate. Very nice
150 7	Nwood 8" lt amy Embroidered Mums ruffled bowl.	1800	55	Dugan 10" elec purple Persian Garden ICS bowl. Great color!
185 8	Nwood 8" mari Embroidered Mums ruffled bowl	300	56	Dugan 9" elec purple Cherries ruffled bowl. What a wonderful bowl
180 9	Nwood 8" green Nippon ruffled bowl.	500	57	Dugan elec purple Persian Garden fruit bowl. Has a nice lavender tint <i>chip</i>
135 10	Nwood 8" purple Nippon ruffled bowl.	400	58	Dugan PO Persian Garden fruit bowl & base.
120 11	Nwood 8" pumpkin mari Nippon ruffled bowl.	475	59	Dugan white Persian Garden fruit bowl w/ 4 berry bowls. Scarce to find together
265 12	Nwood 8" white Nippon ruffled bowl.	250	60	Dugan white Persian Garden 7pc ICS set. All frosty
160 13	Nwood 9" IB Nippon PCE bowl. Scarce	75	61	Dugan 9" PO Garden Path vari ruffled bowl. Scarce
100 14	Nwood 9" emerald blasting green G&C stippled plate Old Rose Distillery. This is an awesome plate!	115	62	Dugan purple Circle Scroll JIP hat
325 15	Nwood 9" elec green G&C stippled plate. Another hottie!	65	63	Dugan mari Constellation compote
35 16	Nwood 9" olive green G&C plate	35	64	Dugan white Constellation compote
75 17	Nwood 9" green G&C plate. NICE	40	65	Dugan 9" mari Fanciful low ruffled bowl
95 18	Nwood 9" purple G&C plate	50	66	Dugan 9" white Fanciful low ruffled bowl
40 19	Nwood 9" mari G&C plate	25	67	Dugan 9" PO Fanciful 10 ruffled bowl
155 20	Nwood 9" pastel mari G&C plate. color in all the right places!	65	68	Dugan 9" mari Fanciful plate. Slight turn up
25 21	Nwood 9" elec purple G&C ruffled bowl. Oh yeah!!	40	69	Dugan 9" white Fanciful 3-1 edge bowl
85 22	Nwood 8" green G&C ruffled bowl	45	70	Dugan 8" PO Ski Star HG plate
30 23	Nwood 8" pastel mari G&C ruffled bowl. BUY IT!	45	71	Dugan 7" mari Fish Scale & Beads plate. has a nice pastel gingerale look.
110 24	Nwood 8" pumpkin mari G&C Stippled ruffled bowl. Super dark	60	72	Dugan 9" mari Round Up low ruffled bowl
60 25	Nwood 7" green G&C HG Plate.	95	73	Dugan 9" white Apple Blossom twigs low ruffled bowl
35 26	Nwood 7" mari G&C HG Plate.	120	74	Dugan 7" elec purple Fish Scale & beads tri corner plate w/ CRE
55 27	Nwood green G&C Stippled bon bon	205	75	Dugan 7" pastel mari Grapevine Lattice ruffled plate
40 28	Nwood mari G&C Stippled bon bon	30	76	Dugan white Puzzle compote
135 29	Nwood elec blue G&C bon bon. SUPER	40	77	Dugan 7" PO Six Petals tri corner bowl
40 30	Nwood green G&C bon bon.	300	78	Dugan 7" elec purple Six Petals tri corner bowl
40 31	Nwood dark green G&C bon bon	55	79	Dugan 7" white Six Petals ruffled bowl
135 32	Nwood elec purple G&C bon bon	65	80	Dugan elec purple Holly Berry Gravy . Killer!
20 33	Nwood mari G&C bon bon	65	81	Dugan white Question marks compote
30 34	Nwood 6" mari G&C card tray	25	82	Dugan 8" Lav. Dogwood Sprays dome ft'd bowl
55 35	Nwood 7" mari G&C card tray	125	83	Nwood 9" Pearl custard 3 fruits stippled ruffled 1
20 36	Nwood 8" purple Greek Key ruffled bowl.	80	84	Nwood 9" custard nutmeg Poinsettia and Lattice ft'd bowl. RARE
50 37	Nwood 8" pastel mari Greek Key ruffled bowl.	105	85	Nwood Custard 10" Peacock Urn MIC bowl.
120 38	Nwood 8" green Greek Key ruffled bowl.	215	86	Nwood 8" Pearl Custard floral bowl w/ gold trim. Very good lookin' bowl
150 39	Nwood emerald green Sunflower ft'd bowl. This is a WONDERFUL bowl! If you don't want it, I'll take it!	120	87	Nwood Pearl custard Grape & Gothic Arches 7pc berry set. scarce. 1 berry has small flake on edge
85 40	Nwood mari Sunflower ft'd bowl. DARK!!	100	88	Fenton 7" custard Horse Medallion plate w/stain.
300 41	Nwood purple Poinsettia & Lattice ft'd bowl	55	89	Imp mari Windmill Dresser tray.
250 42	Nwood mari Poinsettia & Lattice ft'd bowl	20	90	Imp mari Windmill pickle dish
40 43	Nwood french opal Poinsettia & Lattice ft'd bowl	55	91	Imp elec purple pansy pickle dish. SUPER. base roughness
500 44	Dugan 10" elec purple Petal & fan ruffled bowl. Beautiful!	35	92	Imp mari Pansy pickle dish.
145 45	Dugan 10" white Petal & fan ruffled bowl. very frosty!	35	93	Imp elec purple Pansy nappy.
45 46	Dugan 10" PO Petal & Fan 10 ruffled bowl	65	94	Imp 8" elec purple Scroll Embossed ruffled bowl
500 47	Dugan elec purple Border Plants 3-1 edge bowl. Best I've seen! small who cares base chip	85	95	imp 9" blasting elec purple Grape ruffled bowl.
55 48	Dugan PO Flowers & Frames bowl.	45	96	Imp 9" elec purple Pansy ruffled bowl



- 97 <sup>155</sup> Imp 8" elec purple Star of David ruffled bowl. Another beauty!
- 98 <sup>335</sup> Imp 10" elec purple Open Rose deep bowl
- 99 <sup>50</sup> Imp 8" smoke Windmill deep round bowl
- 100 <sup>175</sup> Imp elec purple Zipper Heart 7pc berry set. RARE to find together. Sharp point on master
- 101 <sup>40</sup> 2 Imp 10" mari Morning Glory JIP vases. 1 money
- 102 <sup>75</sup> Imp mari Fashion 10 pc punch set
- 103 <sup>115</sup> Imp mari Grape ~~10~~pc punch set
- 104 <sup>35</sup> Imp 9" smoke Hattie deep round bowl. Great color
- 105 <sup>120</sup> Imp mari 7pc Fashion water set.
- 106 <sup>120</sup> Imp mari 8pc 474 punch set
- 107 <sup>100</sup> Imp pastel mari waffle block 8pc punch set
- 108 <sup>200</sup> Mburg 10" green Hanging Cherries 3-1 edge bowl.
- 109 <sup>125</sup> Mburg 10" mari Hanging Cherries 3-1 edge bowl.
- 110 <sup>105</sup> Mburg 10" green Blackberry Wreath 3-1 edge bowl.
- 111 <sup>155</sup> Mburg mari Nesting Swans ruffled bowl
- 112 <sup>258</sup> Mburg 10" purple Hanging Cherries ICS bowl
- 113 <sup>105</sup> Mburg 10" mari Hanging Cherries ICS bowl
- 114 <sup>208</sup> Mburg 10" green Hanging Cherries ICS bowl
- 115 <sup>115</sup> Mburg green Holly Sprig card tray
- 116 <sup>35</sup> Mburg mari Holly Sprig card tray
- 117 <sup>285</sup> Mburg 8" mari Trout & Fly 3-1 edge bowl
- 118 <sup>95</sup> Mburg 7" mari Little Stars ruffled bowl
- 118a <sup>65</sup> Mburg 6" green Cosmos ICS bowl
- 118b <sup>60</sup> Mburg 8" green Mayan ICS bowl
- 119 <sup>40</sup> Mburg 8" crystal Country Kitchen square bowl
- 120 <sup>50</sup> Mburg crystal Ohio Star rosebowl
- 121 <sup>105</sup> Mburg crystal Marilyn water pitcher
- 122 <sup>15</sup> Mburg crystal Ohio Star Creamer
- 123 <sup>55</sup> Nwood crystal Diamond Points basket
- 124 <sup>50</sup> Nwood crystal Memphis water pitcher. Scarce
- 125 <sup>210</sup> Nwood crystal Memphis master 10pc punch set. Very rare crystal set
- 125a <sup>4/500</sup> Exceedingly RARE 10" mari FERN ft'd chop plate. This is the Only chop plate known in the pattern and we think it is the only known piece in marigold. Has TREMENDOUS blue and yellow irid allover!! Pictures are VERY accurate! Taken in natural light!
- 126 <sup>130</sup> Fenton 8" VO Peacock & Grape ft'd bowl. Scarce <sup>T</sup>
- 127 <sup>50</sup> Fenton 9" mari Peacock & grape 8 ruffle bowl
- 128 <sup>85</sup> Fenton 9" green Peacock & Grape 8 ruffled bowl. Nice bright color
- 129 <sup>209</sup> Fenton 9" purple Peacock & Grape 8 ruffled bowl. Great color!
- 130 <sup>259</sup> Fenton 9" green Orange Tree 8 ruffled bowl. WONDERFUL!
- 131 <sup>120</sup> Fenton 9" Lavender Orange Tree 8 ruffled bowl. Odd shade, Nice!
- 132 <sup>30</sup> Fenton 9" mari Orange Tree 8 ruffled bowl.
- 133 <sup>75</sup> Fenton 9" green Thistle ruffled bowl. Nice
- 134 <sup>65</sup> Fenton 9" blue Dragon & lotus 8 ruffled bowl
- 135 <sup>90</sup> Fenton 9" dark cobalt Dragon & lotus 8 ruffled bowl.
- 136 <sup>110</sup> Fenton 9" lt amy Dragon & Lotus 8 ruffled bowl
- 137 <sup>160</sup> Fenton 7" blue Peacock & Dahlia ruffled bowl
- 138 <sup>25</sup> Fenton 7" mari peacock & Dahlia ruffled bowl
- 139 <sup>105</sup> Fenton 8" purple Captive Rose ruffled bowl
- 140 <sup>35</sup> Fenton 8" mari Captive Rose ruffled bowl
- 141 <sup>85</sup> Fenton 8" green Captive Rose ruffled bowl
- 142 Fenton 8" blue Orange Tree ICS bowl.
- 143 <sup>155</sup> Fenton 8" dark green Orange Tree ICS bowl.
- 144 <sup>30</sup> Fenton 8" mari Orange Tree ICS bowl.
- 145 <sup>30</sup> Fenton 8" mari Orange Tree ruffled bowl.
- 146 <sup>45</sup> Fenton 8" white Orange Tree ruffled bowl.
- 147 <sup>55</sup> Fenton 9" purple Persian Medallion ruffled bowl. Scarce size
- 148 <sup>85</sup> Fenton 9" GREEN Persian Medallion ruffled bowl. Scarce.
- 149 <sup>360</sup> Fenton 9" elec blue Persian Medallion ruffled bowl Scarce. WOW!
- 150 <sup>150</sup> Fenton 9" blue Persian Medallion ruffled bowl great elec hi-lights
- 151 <sup>115</sup> Fenton green Persian Medallion lg compote w/ CRE
- 152 <sup>65</sup> Fenton blue Persian Medallion lg compote w/ CRE
- 153 <sup>35</sup> Fenton mari Persian Medallion lg compote w/ CRE
- 154 <sup>95</sup> Fenton pastel mari Persian Medallion lg compote w/ irid.
- 155 <sup>55</sup> Fenton mari G&C low fruit bowl w/ PM int. Very pastel irid.
- 156 <sup>155</sup> Fenton purple G&C low fruit bowl w/ PM int.
- 157 <sup>150</sup> Fenton green G&C low fruit bowl w/ PM int. Small rim flake
- 158 Fenton mari G&C low fruit bowl w/ PM int. and 6 5" matching berry bowls. 1st set we have sold!
- 159 Fenton blue G&C low fruit bowl w/ PM int. NICE  
Fenton milk glass G&C low fruit bowl. Not sure we've seen one...??
- 159a
- 160 Fenton 8" light amy Concord bowl. Great pressing!
- 161 Fenton 8" mari Concord bowl. Great pressing!
- 162 <sup>250</sup> Fenton 8" green Concord bowl. Great pressing! All 3 are beautiful!
- 163 <sup>210</sup> Fenton 9" elec blue Ribbon tie 3-1 edge bowl
- 164 <sup>25</sup> Fenton 8" purple Ribbon Tie 3-1 edge bowl
- 165 <sup>404</sup> Fenton BLUE Wreath Roses 7 pc punch set. NICE. Small nick on top edge
- 166 <sup>250</sup> Fenton GREEN Wreath Roses 4pc punch set. NICE.
- 167 <sup>375</sup> Fenton PURPLE Wreath Roses 8pc punch set. NICE
- 168 <sup>325</sup> Fenton MARI Wreath Roses 9pc punch set. NICE. ALL 4 SETS HAVE VERY NICE COLOR!
- 169 <sup>408</sup> Nwood 8" IG Hearts & Flowers ruffled bowl. Scarce
- 170 <sup>300</sup> Nwood 8" IB Hearts & Flowers ruffled bowl
- 171 <sup>225</sup> Nwood 8" white Hearts & Flowers ruffled bowl
- 172 <sup>180</sup> Nwood 8" mari Hearts & Flowers ruffled bowl
- 173 <sup>500</sup> Nwood 8" purple Hearts & Flowers ruffled bowl
- 174 <sup>450</sup> Nwood 9" elec purple Stippled Strawberry PCE bowl. WOW
- 175 <sup>30</sup> Nwood 9" mari Stippled Strawberry PCE bowl. Very nice
- 176 <sup>45</sup> Nwood mari Butterfly bon bon
- 177 <sup>65</sup> Nwood purple Butterfly bon bon
- 178 <sup>550</sup> Nwood pastel AO Rose Show bowl. HOT!
- 179 <sup>275</sup> Nwood pastel mari Rose Show bowl. HOT! SUPER!
- 180 <sup>185</sup> Nwood white Rose Show bowl. HOT! SUPER!
- 181 <sup>285</sup> Nwood dark mari Rose Show bowl. HOT! Another beauty
- 182 <sup>150</sup> Nwood blue opal Rose Show bowl. HOT! not CG.
- 183 <sup>825</sup> Nwood 9" elec purple Rose SHow plate. BRIGHT IRID!
- 184 <sup>600</sup> Nwood 9" pastel mari Rose SHow plate. BRIGHT Yellow irid!
- 185 <sup>235</sup> Nwood 9" white Rose SHow plate.

- 186 <sup>550</sup> Nwood 9" elec purple Poppy SHow plate Very hard to find
- 187 <sup>550</sup> Nwood 9" mari Poppy SHow plate. Sharp
- 188 <sup>275</sup> Nwood 9" white Poppy SHow plate.
- 189 <sup>275</sup> Nwood mari Poppy Show bowl. Nice
- 190 <sup>40</sup> Nwood 7" purple Strawberry HG plate
- 191 <sup>30</sup> Nwood 7" mari Strawberry HG plate
- 192 <sup>300</sup> Nwood AO 3 Fruits Stippled ft'd bowl. Wonderful color!
- 193 <sup>150</sup> Nwood frosty white 3 Fruits Stippled ft'd bowl. Wonderful color!
- 194 <sup>190</sup> Nwood blue opal 3 Fruits Stippled ft'd bowl. not CG
- 195 <sup>65</sup> Nwood bright mari 3 Fruits ft'd bowl.
- 196 <sup>80</sup> Nwood elec purple 3 Fruits ft'd bowl.
- 197 <sup>180</sup> Nwood amy 3 Fruits ft'd bowl.
- 198 <sup>80</sup> Nwood purple 3 Fruits ft'd bowl. Nice series of bowls!
- 199 <sup>185</sup> Nwood pastel mari Grape & Gothic Arches 7pc set
- 200 <sup>506-</sup> Nwood 5" mari Fruits & Flowers berry bowls
- 201 <sup>300</sup> RARE Dugan PEACH OPAL Vineyard tumbler. This <sup>no!</sup> has only been reported. Here is the proof! FIRST one to sell at auction. Nice 1" band of opal running right thru the grapes! <sup>where?</sup>
- 202 <sup>55</sup> Dugan mari Vineyard 6pc water set.
- 203 <sup>100</sup> Fenton 7" mari Horse Medallion ICS bowl
- 204 <sup>25</sup> Fenton 9" mari Feather Stitch 8 ruffled bowl
- 205 <sup>25</sup> Fenton purple Iris compote
- 206 <sup>185</sup> Fenton mari Bouquet water pitcher
- 207 <sup>55</sup> Fenton mari & blue Pine Cone 6" plates. 1 money
- 208 <sup>100</sup> Fenton 7" blue Pinecone plate
- 209 <sup>25</sup> Fenton 8" purple Vintage CRE bowl
- 210 <sup>25</sup> Fenton 8" mari Vintage ruffled bowl
- 211 <sup>40</sup> Fenton 8" purple Vintage ruffled bowl
- 212 <sup>25</sup> Fenton 8" purple Vintage 3-1 edge bowl
- 213 <sup>45</sup> Fenton 9" pastel mari Cherry Chain ICS bowl. Whew
- 214 <sup>45</sup> Fenton 10" mari Feathered Serpentine ICS bowl
- 215 <sup>30</sup> Fenton 9" mari 2 flowers ICS ft'd bowl. Nice
- 216 <sup>30</sup> Fenton 10" mari Cherry Chain ruffled owl
- 217 <sup>35</sup> Fenton 8" mari Persian Medallion ICS bowl
- 218 <sup>170</sup> Fenton 9" mari Feathered Serpentine CRE bowl
- 219 <sup>100</sup> Fenton 10" purple Cherry Chain ruffled bowl
- 220 <sup>100</sup> Fenton 10" purple Little Flowers ruffled bowl
- 221 <sup>100</sup> Fenton 10" purple Feathered Serpentine ruffled bowl. Nice
- 222 <sup>45</sup> 2 small frames of buttons made into earrings All nice!
- 223 <sup>45</sup> Fostoria IG Brocaided Palms sandwich tray
- 224 <sup>25</sup> European 8" emerald green 4 flowers vari flared bowl
- 225 <sup>140</sup> Australian 9" mari Kingfisher bowl
- 226 <sup>140</sup> Australian 9" mari Magpie ruffled bowl
- 227 <sup>150</sup> Nwood 10" green Fruits and Flowers ruffled bowl
- 228 <sup>270</sup> Nwood 10" IG Fruits and Flowers ruffled bowl
- 229 <sup>120</sup> US Glass mari Cosmos & cane 7pc berry set
- 230 <sup>270</sup> Nwood mari Singing Birds 5pc berry set
- 231 <sup>350</sup> Nwood green Singing Birds 7pc berry set
- 232 <sup>170</sup> Nwood purple Springtime master berry bowl
- 233 <sup>170</sup> Nwood mari 7pc berry set. Scarce <sup>Spring Time</sup>
- 234 <sup>170</sup> Nwood mari 7pc Acorn Burr 7pc berry set
- 235 <sup>110</sup> Nwood mari 7pc G&C berry set
- 236 <sup>120</sup> Nwood GREEN 7pc G&C berry set tiny flake on point
- 237 <sup>50</sup> Nwood crystal 7pc G&C berry set
- 238 <sup>160</sup> Nwood mari Peacock at Fountain 6pc berry set. Nice
- 239 <sup>160</sup> Nwood mari Memphis 7pc berry set. RARE 1st complete set we have sold.
- 240 <sup>175</sup> Nwood purple Fruits & Flowers master berry bowl and 2- 5" berries. (3pc's)
- 241 <sup>220</sup> Nwood 10" mari Peacock at Urn MIC bowl
- 242 <sup>85</sup> Nwood 10" mari G&C ICS bowl
- 243 <sup>110</sup> Nwood 9" green Wishbone PCE bowl
- 244 <sup>80</sup> Nwood mari Wishbone ruffled bowl
- 245 <sup>45</sup> Nwood 10" purple Wishbone ruffled bowl roughness on base
- 246 <sup>400</sup> Fenton 8" mari Dragon & Strawberry deep round bowl Great color!
- 247 <sup>300</sup> Fenton elec blue Peacock at Urn ruffled bowl WOW
- 248 <sup>130</sup> Fenton blue Orange Tree fruit bowl. Nice
- 249 <sup>45</sup> Fenton mari Orange Tree fruit bowl
- 250 <sup>260</sup> Fenton 8" green Peacock at Urn ruffled bowl
- 251 <sup>180</sup> Fenton 8" white Peacock at Urn ruffled bowl
- 252 <sup>70</sup> Fenton 8" mari Peacock at Urn ruffled bowl
- 253 <sup>115</sup> Fenton GREEN Butterfly & Berry master berry
- 253a <sup>120</sup> Fenton mari Orange Tree 9 pc punch set. Small flake on base of bowl. Getting real picky here!
- 253b <sup>220</sup> Fenton blue Orange Tree Punch bowl and base
- 253c <sup>105</sup> Fenton mari Mikado compote
- 254 <sup>100</sup> Fenton PURPLE Butterfly & Berry master berry bowl
- 255 <sup>55</sup> Fenton BLUE Butterfly & Berry master berry bowl
- 256 <sup>30</sup> Fenton MARI Butterfly & Berry master berry bowl
- 257 <sup>170</sup> Fenton mari Hearts and Trees master berry bowl Scarce
- 258 <sup>175</sup> Fenton PUMPKIN mari Panther master berry bowl
- 259 <sup>140</sup> Fenton 10" mari 2 Flowers ft'd ICS bowl
- 260 <sup>100</sup> Fenton 9" mari Little Fishes ft'd ICS bowl.
- 261 <sup>140</sup> Fenton 9" ELEC BLUE 2 Flowers ft'd ICS bowl
- 262 <sup>100</sup> Fenton 9" mari 2 Flowers ft'd ruffled bowl. REALLY DARK!
- 263 <sup>110</sup> Fenton 9" mari Waterlily ft'd ruffled bowl. Another dark example
- 264 <sup>110</sup> Fenton GREEN Vintage single lily epergne. Make sure you check all these epergnes if a bit of roughness on base of Lily bothers you. This is typical for any epergne.
- 265 <sup>105</sup> Fenton BLUE Vintage single lily epergne
- 266 <sup>45</sup> Fenton BLUE Vintage single lily epergne
- 267 <sup>95</sup> Fenton PURPLE Vintage single lily epergne
- 268 <sup>75</sup> Fenton MARI Vintage single lily epergne
- 269 <sup>95</sup> Imp elec purple Windmill pickle dish
- 270 <sup>125</sup> Imp elec purple grape bowl. SUPER
- 271 <sup>55</sup> Imp 9" amber Heavy grape ruffled bowl
- 272 <sup>75</sup> Imp elec purple Heavy Grape ruffled bowl
- 273 <sup>25</sup> Imp mari Pansy ruffled bowl
- 274 <sup>40</sup> Imp smoke Daisy basket
- 275 <sup>65</sup> Imp smoke Heavy Grape 10" bowl
- 276 <sup>65</sup> Imp satin smoke heavy grape 10" bowl
- 277 <sup>35</sup> Imp 9' amber Pansy ruffled bowl
- 278 <sup>35</sup> Imp elec purple Diamond Lace ruffled bowl
- 279 <sup>15</sup> Imp 9" green Grape ruffled bowl
- 280 <sup>20</sup> Imp mari Windmill milk pitcher
- 281 <sup>85</sup> Imp. mari 7pc Heavy Grape berry set
- 282 <sup>100</sup> Imp smoke Fashion Cr/ Sug set etched
- 283 <sup>10</sup> Imp mari Fashion cr/Sug set <sup>\*</sup>
- 284 <sup>65</sup> Imp elec purple decanter, no stopper. Super

- 285 Fenton 9" Purple Holly ruffled bowl roughness on base  
 286 Fenton 9" mari Holly 3-1 edge bowl  
 287 Fenton 9" blue Holly 3-1 edge bowl  
 288 Fenton 8" mari 3-1 edge Persian Medallion bowl  
 289 Fenton 8" purple 3-1 edge Persian Medallion bowl  
 290 Fenton 8" mari Persian Medallion ruffled bowl  
 291 Fenton smoky powder blue Persia Medallion bon bon  
 292 Fenton amy Persian Medallion bon bon  
 293 Fenton pale yellow Persian Medallion bon bon  
 294 Fenton purple Persian Medallion bon bon  
 295 Fenton Aqua Persian Medallion bon bon  
 296 Fenton mari Persian Medallion bon bon  
 297 Fenton dark amberina Persian Medallion bon bon couple flakes on handle  
 298 Fenton vaseline Persian Medallion bon bon  
 299 Fenton frosted crystal Persian Medallion bon bon  
 299a Fenton 8" white Leaf Chain ruffled bowl  
 300 Nwood mari 14pc G&C master punch set. Great color!!! Scarce  
 301 Nwood purple G&C master punch bowl and base. Nice Tiny flick on interior of bowl. WHO CARES!  
 302 Fenton 8" green Leaf Chain ruffled bowl  
 303 Fenton 7" white Leaf Chain ruffled bowl  
 304 Fenton 7" mari Leaf Chain ruffled bowl  
 305 2- Fenton 7" mari Leaf Chain ruffled bowls 1 money  
 306 Fenton 8" mari Leaf Chain deep round bowl  
 307 Fenton 8" mari Heart & Vine 3-1 edge bowl  
 308 Fenton 8" mari Lotus & Grape ruffled bowl  
 309 Fenton mari Lotus & Grape bon bon  
 310 2 Fenton mari Holly goblets  
 311 Fenton mari Sailboats ruffled goblet  
 312 Fenton 6" VASELINE Blackberry Spray hat  
 313 Fenton 5" mari OE hat- square  
 314 Fenton 5" mari OE hat- JIP  
 315 Fenton 5" mari OE hat- JIP  
 316 Fenton 5" blue OE hat  
 317 Fenton 5" cobalt blue OE hat  
 318 Fenton 5" Aqua OE hat  
 319 2 Fenton RED 7" OE plates- not CG.. Sorry  
 320 Fenton vaseline and green opal OE pieces  
 321 Fenton 6" red OE hat. Not CG  
 322 Dugan white/purple/PO leaf Ray nappies. 1 Money  
 323 Nwood 8" mari G&C ft'd bowl  
 324 Nwood 10" mari Stippled rays ruffled bowl  
 325 Nwood 8" mari Fruits and Flowers dome ft'd bowl  
 326 Nwood 8" purple Fruits and Flowers dome ft'd bowl  
 327 Mari stippled and unstippled Singing Bird Mugs. 1 Money, Both really nice  
 328 Nwood 8" green Strawberry bowl w/ BW back  
 329 Nwood 8" mari Strawberry bowl w/ BW back  
 330 Nwood 9" purple 3 fruits ruffled bowl  
 331 Nwood mari Raspberry candy dish  
 332 Nwood mari Raspberry compote  
 333 Nwood green Raspberry compote Nice color  
 334 Nwood elec blue Double Loop chalice(sugar)  
 335 Nwood mari Double Loop chalice(sugar)  
 336 4 green Memphis punch cups  
 337 Imp mari Fleur de lis ruffled bowl  
 338 6 Mari Panther 5" berry bowls. 1 money all nice color.  
 339 2 Blue ground Cherries painted tumblers  
 340 2 blue Forget me not tumblers  
 341 Nwood green G&C ruffled bowl  
 342 Nwood mari G&C ruffled bowl  
 343 Nwood 9" GREEN Grape Leaves ruffled bowl Scarce color  
 344 Nwood 9" purple Grape Leaves ruffled bowl  
 345 Nwood 9" honey amber Grape Leaves ruffled bowl odd color  
 346 Nwood 9" mari Grape Leaves ruffled bowl  
 347 2 Dugan 7" white Grapevine Lattice low ruffled plates, 1 money  
 348 Ruby stain 1908 St Paul Shiners cup.  
 349 Set of 6 mari Waterlily 5" ft'd bowls. 1 money  
 350 Nwood mari Peacock at Fountain 8pc punch set. Nice color!!  
 351 Nwood purple Acorn Burr 8pc punch set. Great elec hilights all over! Does have a repaired flute :(  
 352 Nwood mari Acorn burr Punch bowl and base. Bright color! Missing one flute.. OOPS  
 353 Nwood mari Memphis 8pc fruit set. Nice dark color, scarce  
 354 Nwood purple G&C large compote. has nice elec hilights  
 355 Nwood 9" green Strawberry plate. Nice  
 356 Nwood 9" purple Strawberry plate  
 357 Nwood 9" dark mari Strawberry plate  
 358 Nwood 9" pastel mari Strawberry plate  
 359 Nwood 9" purple 3 Fruits plate  
 360 Nwood 9" green 3 Fruits plate  
 361 Nwood 9" rad mari 3 Fruits plate. BRIGHT  
 362 Nwood 10" purple Wild Strawberry ruffled bowl  
 363 Nwood 10" GREEN Wild Strawberry ruffled bowl  
 364 Nwood 10" mari Wild Strawberry ruffled bowl  
 365 Nwood mari Poppy pickle dish  
 366 Nwood mari Fruits and Flowers stippled compote  
 367 Nwood green Fruits and Flowers compote  
 368 Nwood purple Fruits and Flowers compote  
 369 Nwood mari Fruits and Flowers compote  
 370 Nwood 8" mari Good Luck ruffled bowl  
 371 Nwood 8" mari 3 Fruits ruffled bowl  
 372 Nwood 8" mari 3 Fruits stippled ruffled bowl  
 373 Nwood 10" Purple G&C lg ruffled bowl  
 374 Nwood 10" green G&C lg ruffled bowl  
 375 Nwood 10" mari G&C lg ruffled bowl  
 376 Nwood 8" mari G&C PCE bowl

**We all hope you had an enjoyable Convention!  
 Thanks to the WWWCGA for choosing JWAS and Greenville,  
 Ohio to host your convention. It is our pleasure!**

**Our next Carnival Glass Auction will be Sept 4th 2010.  
 We will be Auctioning the Sandra Kuchta  
 Collection from Vero Beach, FL.  
 Also selling will be over 800 pieces of RS Prussia!  
 Hope to see you there!**

*Jim Wroda Auction Services* 937-548-7835

August 14, 2010 Carnival Auction (Lots 500+)

- |        |     |  |        |     |   |
|--------|-----|--|--------|-----|---|
| 25     | 501 | PO Encore 1984 Farmyard basket                           | 50     | 540 | 2003 blue WWWCGA "3 points" Pinecone bowl. HP NEAT!               |
| 25     | 502 | Green taylor Elks basket                                 | 30     | 541 | 2 HOACGA Hobnail Spittoons. Room Displays- 1999 & 1995            |
| 5      | 503 | NCCGC 1964-69 chop plate                                 | 35     | 542 | 2 HOACGA Hobnail Spittoons. Room Displays- 1987-1997              |
| 7 1/2  | 504 | 1969 Washington capital chop plate <i>ACGM</i>           | 20     | 543 | 2 HOACGA Hobnail Spittoons. Room Displays- 1989-1998(chipped)     |
| 20     | 505 | 2003 Woodsland blue Pinecone deep bowl                   | 25     | 544 | 2 HOACGA Hobnail Spittoons. Room Displays- 1986-1996              |
| 25     | 506 | WWWCGA Pinecone rosebowl                                 | 30     | 545 | 2 HOACGA Hobnail Spittoons. Room Displays- 1990-1992              |
| 25     | 507 | WWWCGA 2001 red Pinecone JIP hat                         | 115    | 546 | 4 Miniature townpumps ICGA 1977-80-79-78                          |
| 25     | 508 | WWWCGA 2002 purple Pinecone plate CRE                    | 25     | 547 | Lincoln Land 20th Ann. HP covered box. Nice!!                     |
| 20     | 509 | WWWCGA 1999 seamist green Pinecone plate                 | 35     | 548 | Frolicking Bears Spittoon - 1982                                  |
| 7 1/2  | 510 | Monument Valley chop plate                               | 35     | 549 | Frolicking Bears Spittoon - 2001                                  |
| 10     | 511 | Mt Vernon Chop Plate                                     | 40     | 550 | Frolicking Bears Spittoon - 2002 JIP                              |
| 60     | 512 | 4 AO Cactus goblets                                      | 50     | 551 | Frolicking Bears Spittoon - 1998                                  |
| 2      | 513 | Pink Chrysanthemum ruffled bowl                          | 10     | 552 | 3 plates from NCCC 1978-79-81                                     |
| 5      | 514 | IG Chrysanthemum ruffled bowl                            | 20     | 553 | Seacoast Spittoon - 1982 <i>ACGA</i>                              |
| 20     | 515 | Satin IG G&C flared centerpiece bowl Almost a chop plate | 25     | 554 | Seacoast Spittoon - ACGA 2000                                     |
| 20     | 516 | Satin IG G&C stippled centerpiece bowl                   | 45     | 555 | Seacoast Spittoon - ACGA 1982                                     |
| 5      | 517 | HOACGA 2000 Orange Tree goblet                           | 30     | 556 | Seacoast Spittoon - ACGA 2001                                     |
| 5      | 518 | HOACGA 1999 Orange Tree goblet                           | 30     | 557 | Seacoast Spittoon - ACGA 1985                                     |
| 40     | 519 | 1989 ICGA blue HP Thumbprint vase                        | 30     | 558 | Seacoast Spittoon - ACGA 1985                                     |
| 15     | 520 | ICGA 2000 blue Melon rib 5" vase                         | 25     | 559 | Seacoast Spittoon - ACGA 1999                                     |
| 20     | 521 | 1979 red Good Luck Loving cup.                           | 25     | 560 | Seacoast Spittoon - ACGA 2002                                     |
| 20     | 522 | ICGA 1986 Poppy "pushed down" vase, Green Opal           | 25     | 561 | Seacoast Spittoon - ACGA 1998                                     |
| 25     | 523 | ICGA 1986 Poppy rosebowl, Green Opal                     | 30     | 562 | ICGA 2004 Diamond Rib JIP 5" vase                                 |
| 5      | 524 | 1971 ACGA Beaded Shell mug,                              | 10     | 563 | 1975 & 1974 ICGA Town Pump Plates                                 |
| 25     | 525 | 1979 ACGA Beaded Shell Creamer, made from a mug          | 17 1/2 | 564 | 1982 HOACGA Corn Vase   |
| 7 1/2  | 526 | 1969 ACGA God we Trust mug.                              | 20     | 565 | 1982 NCCC Inverted Strawberry Spittoon                            |
| 12 1/2 | 527 | 1983 Pacific NW Fishermans mug                           | 25     | 566 | 1993 Encore Kittens Ruffled Bowl                                  |
| 10     | 528 | vaseline 1978 Lincoln land character mug                 | 15     | 567 | 1984 ICGA Inverted Strawberry Mini Spittoon                       |
| 25     | 529 | Red 1977 HOACGA Hatpin holder                            | 10     | 568 | 1970 Original Carnival Souvenir S Repeat toothpick and SSCGA salt |
| 20     | 530 | Green 2002 HOACGA Hatpin holder                          | 10     | 569 | 1984 LLCGC Bell   |
| 30     | 531 | 2001 VO HOACGA Hatpin holder                             | 30     | 570 | Red Inverted Strawberry S&P 1994 SSCGA                            |
| 10     | 532 | 1980 satin Green HOACGA hatpin holder                    | 2      | 571 | WCGA 2002 Ornament  |
| 5      | 533 | collection of WWWCGA pins from Las Vegas                 | 12 1/2 | 572 | 3 Toothpicks 1964 SCGC, 1974 ACGA, blue boot                      |
| 20     | 534 | Emerald green Pinecone ruffled bowl                      | 20     | 573 | 2 2" Carnival Chickens  |
| 10     | 535 | Blue WWWCGA Pine "pulled up" bowl.                       | 5      | 574 | 3 ICGA Town Pump Paper Weights                                    |
| 25     | 536 | Red 2007 Pinecone WWWCGA JIP HP hat                      | 7 1/2  | 575 | ACGA 1973 Staunton VA Dresser Tray                                |
| 25     | 537 | Blue WWWCGA HP Pinecone plate                            | 5      | 576 | Pacific NW 1998 Shell Table Favor                                 |
| 25     | 538 | seamist WWWCGA Pinecone plate                            | 70     | 577 | Red 1981 HOACGA G&C Candle Lamp                                   |
| 25     | 539 | 2002 purple WWWCGA Pinecone CRE plate                    |        |     |   |

[Type text]

- 110 578 Red 1976 HOACGA Whiskey Set
- 95 579 Red 1974 HOACGA 7 - pc water set
- 17 1/2 580 1990 Parkersburg ACGA Inverted Strawberry Fairy Lamp
- 15 581 1990 ICGA HP Green Covered Candy
- 7 582 2003 TCGC Green Flower Form Fairy Lamp
- 4 583 2000 Ace 25th Anniv. 6" plate
- 5 584 1974 ACGA Chop Plate Indianapolis
- 10 585 ACGA 1972 Plate Dayton
- 27 586 1999 SSCGA Elk Pocket Watch
- 5 587 1973 ICGA Town Pump plate
- 5 588 ICGA 1996 G&C 6" plate
- 10 589 1971 ICGA Town Pump paper weight
- 2 590 1968 ICGA Calendar Plate
- 15 591 Blue 2000 TCGC Star Paper weight
- 30 592 Plum Opal 6" Butterfly SCCGC 1997
- 4 593 1970 ICGA Milwaukee Round Bowl
- 17 1/2 594 ACGA 1997 Hobstar and Feather mini punch set
- 30 595 Gibson TCGC Vaseline Opal Vintage Spittoon
- 10 596 Vaseline Opal SSCGA 2007 Swan
- 10 597 1999 SCGA Blue Handled Basket
- 15 598 2000 Heart of America blue pansy plate
- 10 599 1997 CGS (UK) Peacock and Dahlia plate
- 600 Hobnail PO Bell
- 20 601 Frank Fenton 1 of a kind 1986 HOACGA Good Luck Bell
- 10 602 1987 HOACGA Good Luck Bell
- 20 603 ACE New South Wales bell
- 10 604 1986 Good Luck HOACGA Bell
- 10 605 1987 Good Luck HOACGA Bell
- 10 606 1985 Good Luck HOACGA Bell
- 7 1/2 607 1988 Good Luck HOACGA Bell
- 7 1/2 608 1989 Good Luck HOACGA Bell
- 80 609 ICGA 1995 Dallas Acanthus Chop Plate
- 3 610 2003 WWWCGA St Louis Tile
- 75 611 1999 ICGA Green Santa
- 5 612 1976 Good Luck HOACGA Wine Stopper Only