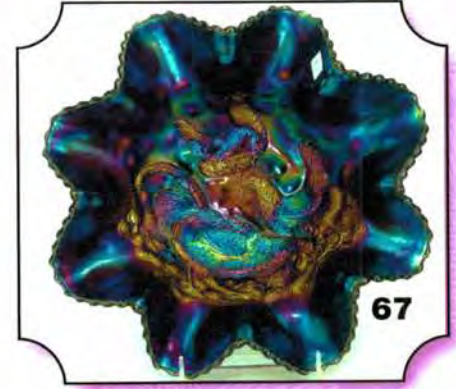
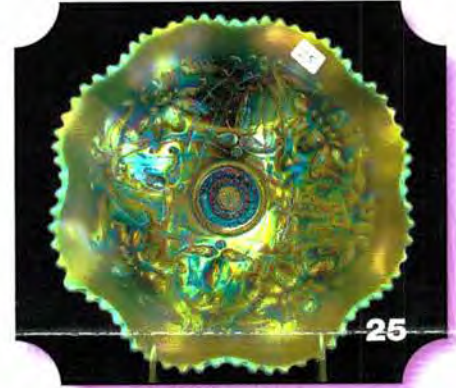
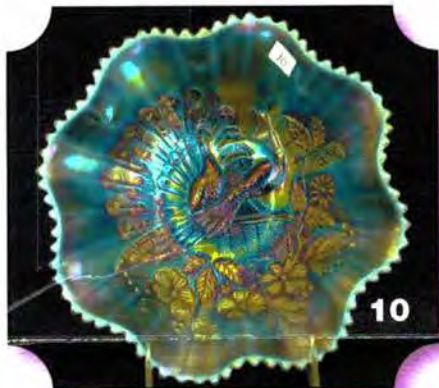


*International Carnival Glass
Association Convention*
Auction

Saturday, July 17th, 2010 -- 9:30 A.M.
The Ruth and John Phillips' Collection



**Holiday Inn Lakeview –
Louisville North**
505 Marriott Drive
Clarksville, Indiana
(Right across the river from
Louisville, Kentucky)



JIM & JAN SEECK

Seeck Auctions

641-424-1116



ICGA Convention Auction



SATURDAY, JULY 17, 2010 -- 9:30 A.M.
Holiday Inn Lakeview – Clarksville, Indiana

NO BUYER'S PREMIUM
OPEN TO THE PUBLIC

The Ruth and John Phillips' Collection
(Preview: Time to be determined at Convention)

Seeck Auctions is pleased to be selling the Ruth and John Phillips' collection of Carnival Glass from Florida. Ruth and John have collected for quite some time and enjoyed traveling to the conventions and auctions and bringing the pieces home to add to their collection. Ruth had several favorites such as Wish-bone, Inverted Thistle, Inverted Strawberry, Table Sets and Water Sets. She was always on a mission to find a color or set she did not have. Her eye for color and iridescence is fantastic and her glass shows it. Ruth and John also liked rare items and they have several dandies! The auction has a great variety of items and there should be something for everyone.

Brian and the other ICGA officers have a fun, educational and exciting convention planned. There is lots to do around Louisville and hope to see you all there! All the pieces have been photographed for the website.

Don't forget to check out our website for lots of pictures!
www.seeckauction.com

Also, please email us and we will put you on our email mailing list for auction notices.

Reservations can be made by calling the hotel directly at (812)283-4411. Ask for reservations and mention the "ICGA" or "Carnival Glass" Convention to get the special rate of \$100 per night, includes free breakfast. If you have questions about the convention, contact President Brian Pitman at: 785-478-9004 or email: bpitman@woodsland.com

Visit the ICGA Website: <http://www.internationalcarnivalglass.com>

Terms: Cash or Check, VISA and MasterCard accepted w/proper ID. **4% Clerking Fee** on all purchases except for payment of cash or check. Announcements made day of sale take precedence over any printed information.

Seeck Auctions
641-424-1116



EMAIL:
jimjan@seeckauction.com

LIVE PHONE BIDDING POLICY

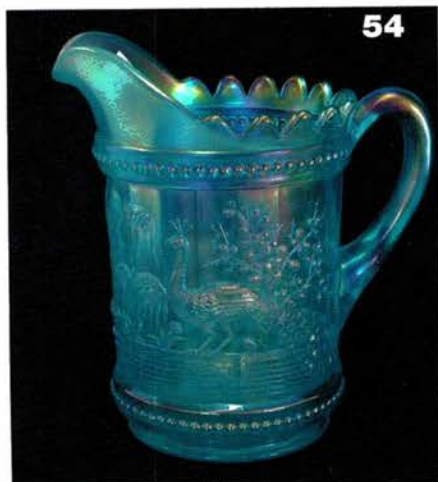
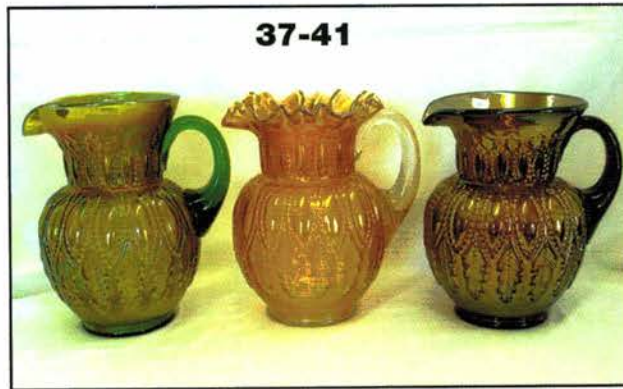
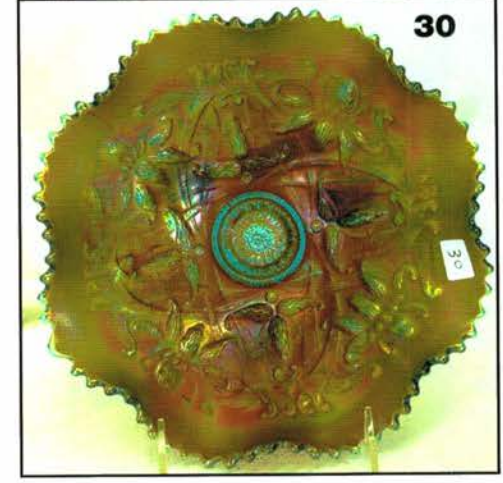
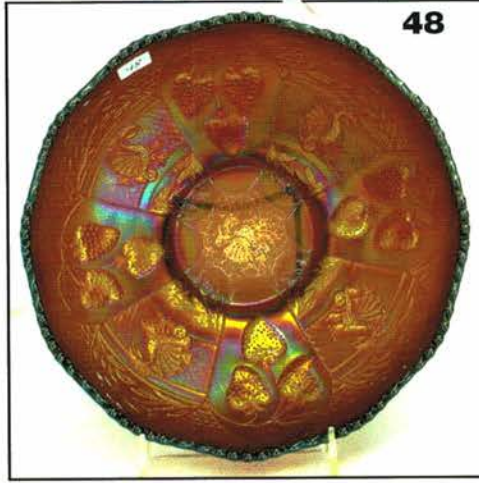
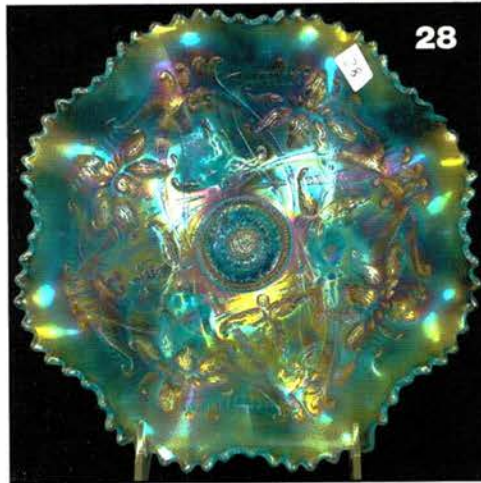
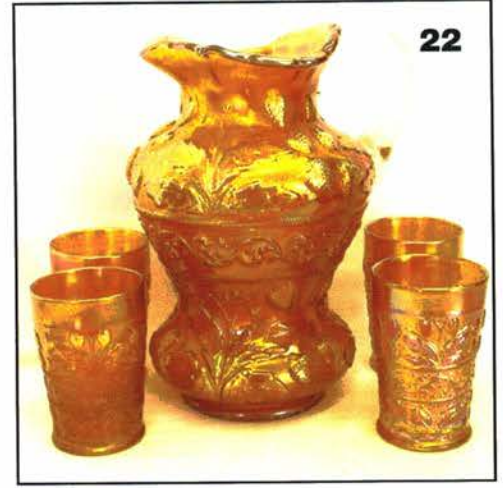
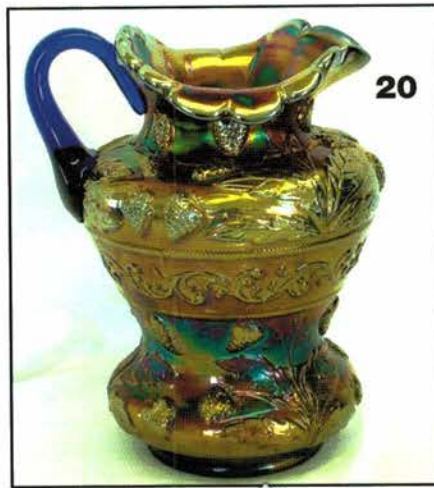
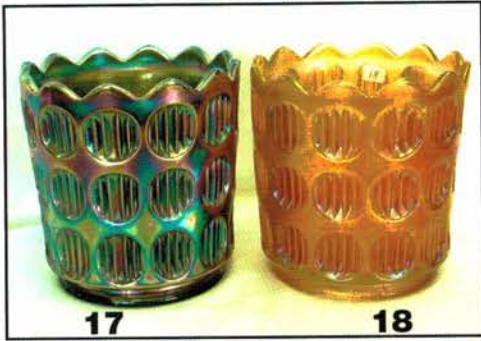
1. If you would like to participate in live phone bidding, contact us by the Tuesday before the auction (July 13th).
2. Live Phone Bidding is only available on pieces with an estimated sale price of \$500 or more.
3. We will need to know the lot# and the phone number that you can be reached at on the day of the auction.
4. We will also need your home phone number if different than number provided in #3.
5. Shipping, Insurance & \$7.00 fee will be charged on each successful bid.
6. Please call with questions: 641-424-1116.

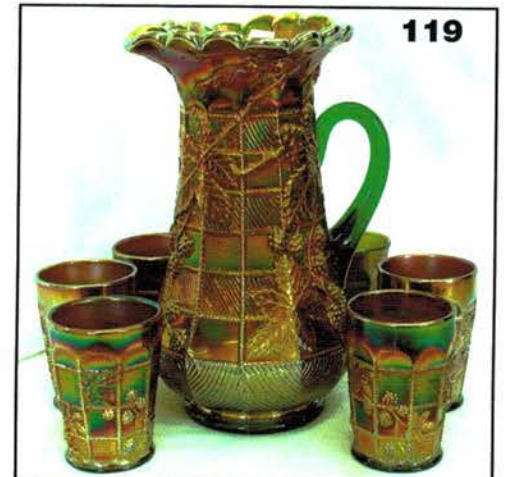
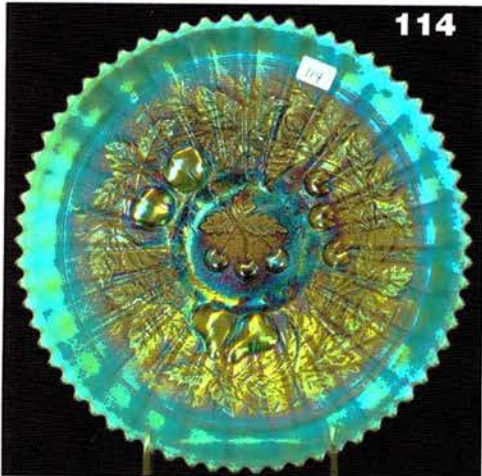
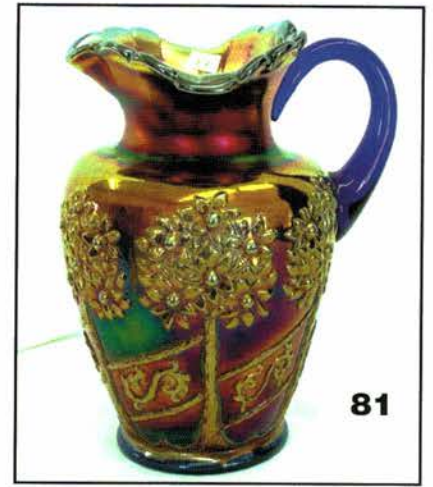
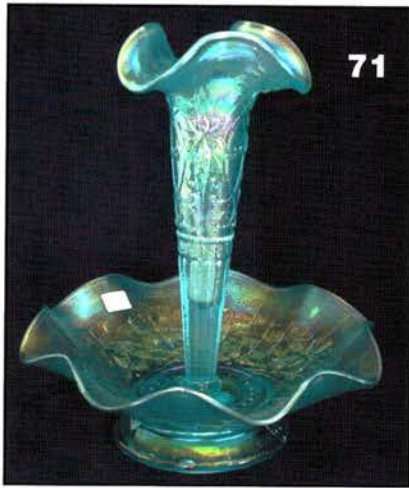
ABSENTEE BID POLICY

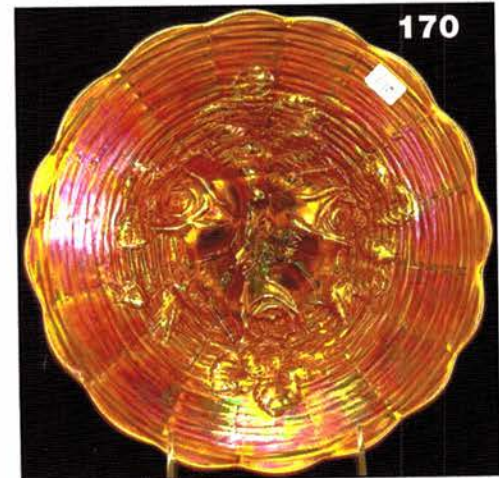
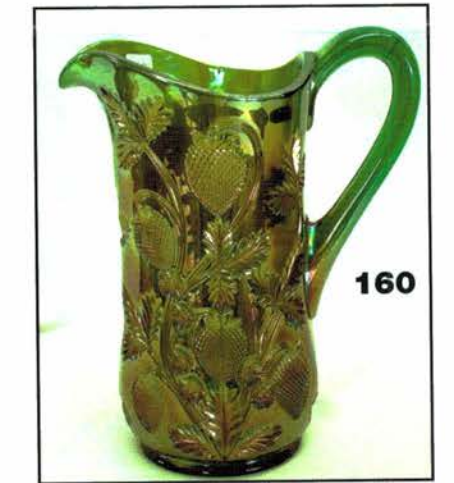
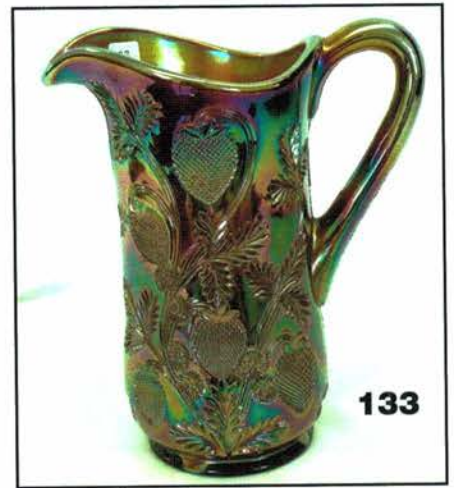
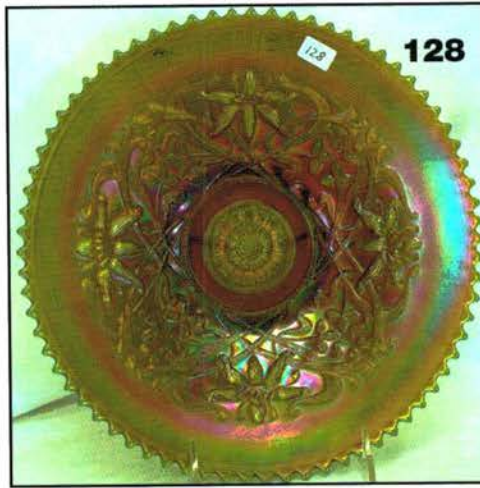
1. Write-in bids will be accepted by sending the numbers of the item(s) desired and the amount bid on each to: **Seeck Auctions, PO Box 377, Mason City, Iowa 50402.**
2. You may call in your bids previous to the auction at (641)424-1116.
3. You may email your bids to us: **jimjan@seeckauction.com** Continue to include the numbers of the item(s) you would like to bid on and amount bid on each, please include your telephone number.
4. There is a **\$7 handling charge** for each successful bid. Shipping and insurance charges are additional.
5. Bidders will be notified by phone/email if their bid(s) are successful. This will be done 1 - 3 days after the auction.
6. Please have all bids in by **Tues., July 13th**. All bids (by mail, phone or email) after this date may not be carried out.
7. Please place bids in the following increments: \$1 to \$300 - \$5 increments \$300 up - \$25 increments.
8. **If you do not receive an item that sold for less than your bid, assume we cancelled your bid because the piece of glass had below average color, manufacture problem, damage or was not listed correctly.**
9. Auction results are posted on our website within 2 weeks of the auction (depending on drive time home from the sale.)

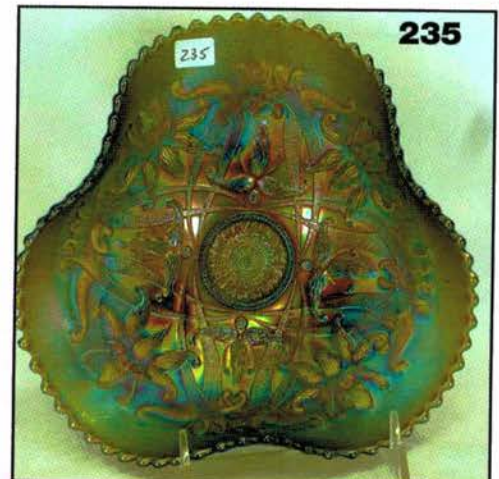
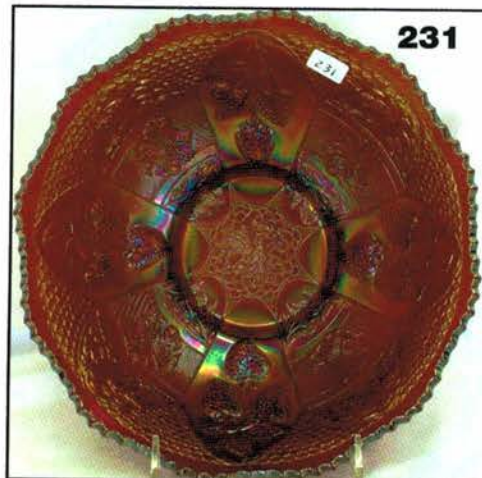
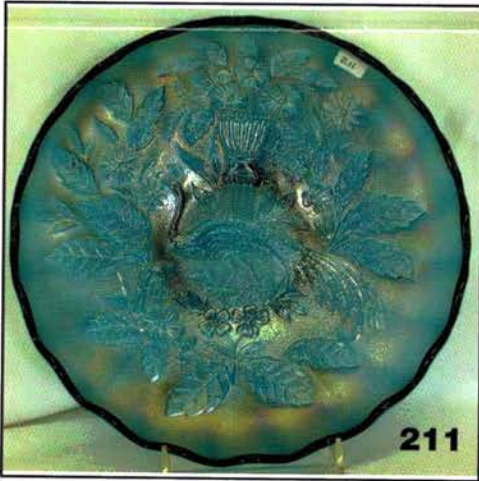
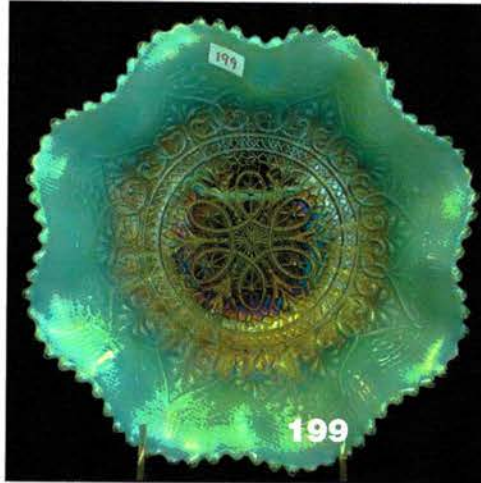
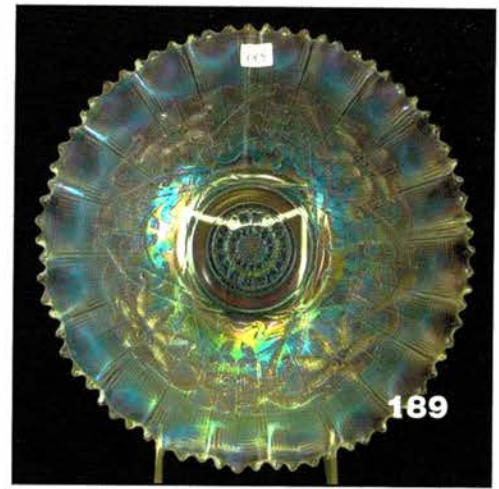
- 30 1. Concave Flute 9" vase - amethyst - pretty
- 35 2. Freefold 11" vase - purple
- 35 3. Pillar Flute 6" ftd vase - smoke - pretty
- 185 4. Lined Lattice 5" squatty vase, 5 1/2" mouth - marigold - pretty
- 205 5. Drapery Variant 8 1/2" vase - lavender - super pretty, neat vase
- 25 6. Drapery 7 1/2" vase - marigold - typical minor pin-point on foot
- 25 7. Miniature Thin Rib & Drape 5 1/2" vase - marigold - pretty
- 125 8. Four Pillars 11" vase - aqua opal
- 85 9. Boggy Bayou 5 1/2" squatty vase - marigold
- 850 10. PEACOCKS RUFFLED BOWL W/RIBBED BACK - POWDER BLUE OPAL - FANTASTIC IRID. ON THIS EXTREMELY RARE BOWL, THE NICEST ONE I HAVE PERSONALLY SEEN, WOW!
- 325 11. Peacocks low ruffled bowl w/ribbed back - aqua opal - odd finish
- 250 12. Peacocks ruffled bowl w/ribbed back - amethyst - super pretty irid., leans towards lavender
- 185 13. Stork & Rushes 4 pc. table set - marigold - quite hard to find set
- 850 14. Grape & Gothic Arches 7 pc. water set - green - super pretty, some may call this emerald
- 525 15. Grape & Gothic Arches 7 pc. water set - blue - scarce, also pretty
- 325 16. Good Luck ruffled bowl w/ribbed back - blue - electric, nice
- 3100 17. DIAMOND RIB JARDINIÈRE - GREEN - SUPER, SUPER, SUPER, RARE & HIGHLY DESIRABLE
- 2100 18. DIAMOND RIB JARDINIÈRE - MARIGOLD - ALSO SUPER, ALSO RARE
- 205 19. Australian Kangaroo master ruffled bowl - marigold - very pretty
- 2600 20. Strawberry Scroll water pitcher - blue - rare & desirable, a dandy
- 50, 40 21. Strawberry Scroll tumblers (2) - blue - choice
- 3800 22. Strawberry Scroll 5 pc. water set - marigold - dark & super
- 450 23. Big Basketweave 5" squatty vase - purple - nice
- 205 24. Big Basketweave 5" squatty vase - white - pretty
- 16,000 25. WISHBONE FTD RUFFLED BOWL - AQUA OPAL - EXTREMELY RARE OPPORTUNITY TO BUY A TOP PIECE IN CARNIVAL GLASS, SUPER PRETTY W/LOTS OF OPAL
- 700 26. Wishbone ftd ruffled bowl - lime green - very rare color, nice
- 800 27. Wishbone ftd ruffled bowl - ice green - very scarce, super
- 1180 28. Wishbone ftd ruffled bowl - ice blue - dark color w/super irid.
- 85 29. Wishbone ftd ruffled bowl - white - frosty & pretty
- 900 30. Wishbone ftd ruffled bowl - sapphire - extremely rare color w/super irid., can't ask for more
- 400 31. Wishbone ftd ruffled bowl - horehound - great irid. on a rare color
- 350 32. Wishbone ftd ruffled bowl - blue - hard to find color, nice
- 400 33. Wishbone ftd ruffled bowl - green - bright emerald irid., super!
- 115 34. Wishbone ftd ruffled bowl - purple - a very nice example
- 135 35. Wishbone ftd ruffled bowl - pastel marigold - pretty
- 75 36. Wishbone ftd ruffled bowl - marigold - nice pink irid.
- 6250 37. M'BURG PERFECTION WATER PITCHER - GREEN - SUPER IRID., A REAL BEAUTY FOR THIS RARITY
- 650 38. M'burg Perfection tumbler - green - rare
- 600 39. M'burg Perfection water pitcher w/cripped top - marigold - super pretty example, has crack in body of pitcher, RARE
- 400 40. M'burg Perfection tumbler - marigold - beautiful &
- hard to get
- 2700 41. M'burg Perfection water pitcher - amethyst - very nice pitcher & super hard to get, a M'burg classic
- 550 42. M'burg Perfection tumbler - amethyst - fabulous
- 225 43. Beaded Shell 4 pc. table set - marigold - hard set to get
- 6250 44. CHRISTMAS COMPOTE - PURPLE - FANTASTIC, MAYBE THE BEST ONE I'VE EVER SEEN, CAME OUT OF THE MOCHEL COLLECTION, UNBELIEVABLE, THIS ONE SAYS BUY ME!
- 500 45. CHRISTMAS COMPOTE - MARIGOLD - ANOTHER GREAT ONE, PULLED UP MORE THAN MOST, SUPER DARK AND REALLY SHOWS THE BEAUTY ON THE OUTSIDE, FANTASTIC!
- 95 46. Four Seventy Four large size water pitcher - marigold
- 15 47. Four Seventy Four tumbler - marigold
- 5800 48. Dragon & Strawberry IC shaped bowl - amethyst - fantastic irid. on this extremely rare bowl, not many amethyst come available
- 1500 49. Dragon & Strawberry IC shaped bowl - blue - outstanding irid., beautiful
- 700 50. Dragon & Strawberry IC shaped bowl - marigold - pretty, pretty
- 550 51. Octagon salt & pepper shakers - marigold - scarce set
- 3150 52. PANELED TREE TRUNK 7" SQUATTY VASE - PURPLE - EXTREMELY RARE, ONLY ONE I HAVE SEEN THIS SQUATTY, SUPER NICE IRID., A COUPLE OF MINOR PINPOINTS, A GREAT OPPORTUNITY
- 155 53. Dragon & Lotus 3 in 1 edge bowl - amethyst - pretty
- 1800 54. Peacock at the Fountain water pitcher - ice blue - dark color w/pretty irid., great pitcher
- 200 55. Peacock at the Fountain tumbler - ice blue - scarce
- 1400 56. Peacock at the Fountain water pitcher - green - very rare color, nice example
- 250 57. Peacock at the Fountain tumbler - green - as nice as you can find, fabulous!
- 550 58. Peacock at the Fountain water pitcher - white - frosty, pretty
- 105 59. Peacock at the Fountain tumbler - white - minor pin-point on base
- 450 60. Peacock at the Fountain 7 pc. water set - purple - super set w/beautiful tumblers & beautiful pitcher
- 50 61. Peacock at the Fountain tumbler - marigold - super
- 2200 62. GRAPE & CABLE 4 PC. TABLE SET - ICE GREEN - EXTREMELY RARE, ONE OF JUST A FEW SETS KNOWN, A RARE OPPORTUNITY, SUGAR BOWL LID HAS DAMAGE
- 275 63. Grape & Cable 4 pc. table set - green - very nice set, scarce
- 300 64. Grape & Cable 4 pc. table set - marigold - dark & super, well matching set
- 75 x 3 65. Grape & Cable creamer, sugar & spooner - purple - choice, all very nice
- 190 66. Stippled Grape & Cable butter dish - purple - very rare stippled, pretty
- 19,000 67. FARMYARD 8 RUFFLED BOWL - PURPLE - FANTASTIC BLUE IRID. FROM ONE SIDE TO THE OTHER, HAS THE WOW FACTOR!
- 220 68. Swan salt - purple
- 1300 69. WISHBONE EPERGNE - LIME GREEN - EXTREMELY RARE COLOR, HAVEN'T HEARD OF ANOTHER, LILY IS GLUED INTO BASE
- 1400 70. WISHBONE EPERGNE - ICE GREEN - EXTREMELY RARE & HIGHLY DESIRABLE, BASE IS LIME GREEN, MOST HAVE THE LIME GREEN BASE
- 3500 71. WISHBONE EPERGNE - ICE BLUE - FANTASTIC IRID. ON THIS SUPER RARE EPERGNE
- 1500 72. Wishbone epergne - white - extremely rare & pretty, WOW!
- 575 73. Wishbone epergne - green - rare color plus pretty
- 1150 74. Wishbone epergne - purple - as nice as the purple can get
- 375 75. Wishbone epergne - amethyst - very scarce
- 500 76. Wishbone epergne - marigold - nice
- 150 77. Leaf & Beads rose bowl - aqua opal - scarce

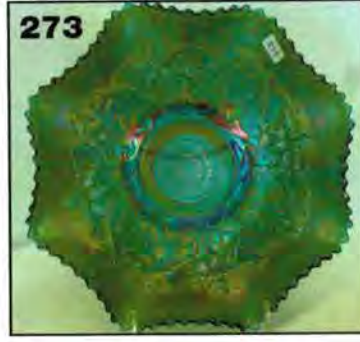
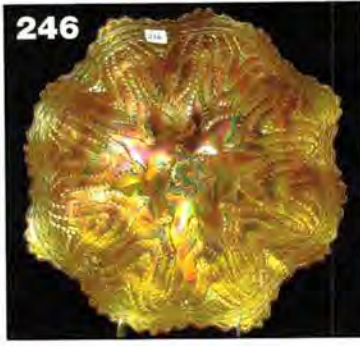
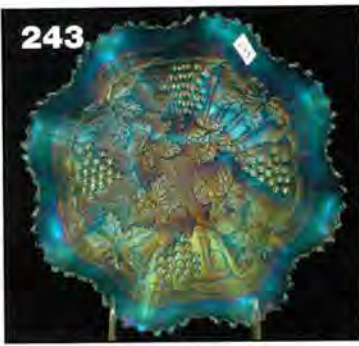
- 4250 78. INVERTED FEATHER TANKARD WATER PITCHER - MARIGOLD - A FANTASTIC RARITY, VERY FEW KNOWN AND NOT OFTEN SOLD, SUPER PRETTY!
- 180 79. Lattice & Points 9" vase - purple - pretty
- 550 80. Orange Tree Orchard water pitcher - white - super pretty, frosty w/great irid.
- 75 80A. Orange Tree Orchard tumbler - white
- 650 81. Orange Tree Orchard water pitcher - blue - electric & nice, a beauty
- 75 82. Orange Tree Orchard tumbler - blue - super
- 625 83. Orange Tree Orchard water pitcher - marigold - dark, gorgeous!
- 35 84. Orange Tree Orchard tumbler - marigold
- 6700 85. DAISY & DRAPE TURNED IN VASE - GREEN - EXTREMELY RARE, VERY FEW KNOWN, HAS BEAUTIFUL EMERALD IRID.
86. Daisy & Drape turned in vase - ice blue - very pretty irid., a great example, rare
87. Daisy & Drape turned in vase - marigold - scarce
88. Daisy & Drape turned in vase - white - pinched in like a rose bowl, unusual shape
89. Daisy & Drape flared out vase - blue - electric & nice
90. Moonprint 2 pc. punch bowl or fruit bowl - marigold - very hard to find, neat piece
91. M'BURG COUNTRY KITCHEN 4 PC. TABLE SET - AMETHYST - FANTASTIC RADIUM BLUE IRID. ON THIS SUPER RARE SET
92. M'burg Country Kitchen 4 pc. table set - marigold - another rare set, not many opportunities for these
93. Fenton's Peacock at Urn 6 ruffled bowl - blue - fantastic
94. Grape & Cable 7 pc. tankard water set - green - another great rarity, seldom available, nice
95. Grape & Cable tankard water pitcher - purple - super pretty, very rare to get
96. Grape & Cable tankard tumblers (2) - purple - choice
97. Grape & Cable 7 pc. tankard water set - marigold - dark, fantastic
98. Moonprint 9" trumpet vase - marigold - dark w/pretty irid., rare
99. CAMBRIDGE NEAR CUT DECANTER - GREEN - SUPER PRETTY & VERY RARE, ONLY A FEW KNOWN, MINOR NICK ON BOTTOM OF STOPPER
100. Carnival Hobstar 4 pc. table set - marigold - dark & super
101. Grape & Cable hatpin holder - ice blue - super pretty irid. w/dark color, all that you want
102. Grape & Cable hatpin holder - emerald green - fantastic irid.! one foot has been polished, SUPER!!
103. Grape & Cable hatpin holder - purple - a nice one
104. WISTERIA TANKARD WATER PITCHER - ICE BLUE - A TOP RARITY IN OUR HOBBY, HAS FANTASTIC IRID., DARK, WOW WOW!
105. Wisteria tumbler - ice blue - pretty example, rare
106. Ten Mums CRE bowl - amethyst - super pretty irid., beautiful!
107. Acorn Burrs 12 pc. punch set - green - fantastic, many would call emerald, beautiful set!
108. Acorn Burrs 11 pc. punch set - purple - rare & very desirable, nice
109. Ftd Orange Tree 4 pc. table set - white w/gold trim - very rare set, chip on sugar bowl base rim
110. Ftd Orange Tree 4 pc. table set - marigold - spot of epoxy on foot of butter dish & foot of creamer, pretty!
111. PEACOCK GARDEN VASE - MARIGOLD - A FENTON CLASSIC, ONLY A FEW KNOWN, FANTASTIC FROM TOP TO BOTTOM, MAYBE ONE OF MY FAVORITE PCS. IN THE AUCTION
112. Corn bottle - smoke
113. Corn bottle - marigold
114. Stippled Three Fruits 9" plate w/ribbed back - aqua opal - fabulous irid. w/lots of opal, rare!
115. N's Eight Sided Bushel Basket - marigold
116. RASPBERRY 7 PC. WATER SET - BLUE - EXTREMELY RARE SET IN BLUE, ONLY A FEW KNOWN, BOTH PITCHER & TUMBLERS HAVE GREAT IRID., TUMBLERS HAVE "IDA 1914" ETCHED ON THEM, RARE OPPORTUNITY
117. Raspberry tumbler - ice blue - super irid.
118. Blackberry Block tankard water pitcher - white - extremely rare pitcher, highly desirable
119. Blackberry Block 7 pc. tankard water set - green - super pretty set, very hard to find
120. Blackberry Block 7 pc. tankard water set - amethyst - rare color, hard to get
121. Blackberry Block tankard water pitcher - blue - rare & highly desirable, nice
- 121A. Blackberry Block tumblers (2) - blue - choice
122. Blackberry Block 5 pc. tankard water set - marigold - fantastic, dark from top to bottom
123. Peacock at the Fountain 4 pc. table set - ice blue - super pretty set w/great irid., rare, rare, rare
124. Peacock at the Fountain 4 pc. table set - white - another rare set plus nice!
125. Peacock at the Fountain 4 pc. table set - blue - fantastic color, this may be the rarest set of all of them!
126. Peacock at the Fountain 4 pc. table set - purple - super, scarce
127. Peacock at the Fountain 4 pc. table set - marigold - dark, fantastic
128. Wishbone chop plate w/BW back - green - extremely rare plate, not many known
129. Wishbone chop plate - purple - very nice plate, scarce
130. Wishbone chop plate - marigold - dark, very nice
131. Wishbone chop plate - pastel marigold - super pretty, rare color
132. Stag & Holly lg size ftd IC shaped bowl - blue
133. INVERTED STRAWBERRY MILK PITCHER - AMETHYST - VERY, VERY RARE PIECE, FEW KNOWN, FABULOUS IRID.
134. Moonprint 5" squatty vase or celery vase - marigold - scarce
135. Dragon & Strawberry ftd ruffled bowl - green - very scarce bowl, pretty
136. Dragon & Strawberry ftd ruffled bowl - marigold - nice
137. Inverted Thistle 5 pc. water set - marigold - an extreme rarity, very pretty, another rare Cambridge set
138. Inverted Thistle 5 pc. water set - purple - super pretty set & highly desirable, rare
139. Octagon 4 pc. table set - marigold - minor nick on sugar bowl lid, otherwise nice
140. Peacocks 9" plate w/ribbed back - purple - super example, lots of bright yellow irid.
141. Peacocks 9" plate w/ribbed back - lime green - rare color, nice
142. Moonprint squatty water pitcher - marigold - neat
143. Chatelaine 7 pc. water set - purple - fantastic w/incredible color, a rare set that can't be beat
144. Zippered Loop kerosene lamp w/Mayflower shade - marigold - 9" high w/5 1/2" base, nice
145. Fenton's Waterlily & Cattails 7 pc. water set - marigold - hard pitcher to get, super dark!
146. Waterlily & Cattails 4 pc. table set - marigold - super set, very hard to get
147. Inverted Strawberry giant round compote - amethyst - super rare, super pretty
148. Inverted Strawberry giant tulip top compote - marigold - unusual shape, nice
149. Buzz Saw lg size cruet w/stopper - marigold
150. Three Row vase - purple - extremely rare, highly desirable, nice!
151. Three Row vase - marigold - another rarity, nice!
152. Inverted Thistle 8 1/2" round bowl - amethyst - very











- ___ rare bowl in this pattern
- ___ 153. Acorn Burrs 4 pc. table set - green - very pretty set, scarce
- ___ 154. Acorn Burrs 4 pc. table set - purple - another rare set
- ___ 155. Acorn Burrs 4 pc. table set - marigold - dark, super
- ___ 156. Wishbone ftd 9" plate - green - very rare color, highly sought after
- ___ 157. Wishbone ftd 9" plate - purple - super pretty example
- ___ 158. Wishbone ftd 9" plate - marigold - dark, super, rare
- ___ 159. Wishbone ftd 9" plate - pastel marigold - rare
- ___ 160. Inverted Strawberry tankard water pitcher - green - a rare pitcher that is sought after, nice
- ___ 161. Inverted Strawberry tumbler - green
- ___ 162. Inverted Strawberry 7 pc. tankard water set - purple - super set, very seldom find complete sets
- ___ 163. Inverted Strawberry 7 pc. tankard water set - marigold - dark & nice, a really rare set
- ___ 164. Good Luck PCE bowl w/ribbed back - purple - has electric blue irid., a beauty
- ___ 165. Tree Trunk 10" vase - aqua opal - super neat vase w/back of vase higher than front
- ___ 166. Tree Trunk 9" vase - sapphire - very rare color & nice
- ___ 167. M'burg Hanging Cherries 4 pc. table set - amethyst - super pretty set, as nice as they get, minor nick on inside sugar bowl base
- ___ 168. M'burg Hanging Cherries 4 pc. table set - marigold - another rare set, nice
- ___ 169. Rose Show 9" plate - blue - rare & highly desirable, nice
- ___ 170. Rose Show 9" plate - marigold - lots of pink irid.
- ___ 171. Moonprint bonboniere - marigold - chip on top edge
- ___ 172. HEAVY IRIS 7 PC. TANKARD WATER SET - PURPLE - FANTASTIC! AND RARE, PITCHER IS OUTSTANDING
- ___ 173. Inverted Strawberry powder jar - green - scarce
- ___ 174. Inverted Strawberry powder jar - marigold
- ___ 175. Big Basketweave 10" vase - sapphire blue - not sure what color to call this, but is a dark celest blue, has chips on base
- ___ 176. Big Basketweave 9 1/2" vase - celest blue - super pretty, scarce
- ___ 177. Big Basketweave 10 1/2" vase - ice blue - very rare

- ___ color
- ___ 178. Big Basketweave 9 1/2" vase - purple - fantastic irid!
- ___ 179. Big Basketweave 10 1/2" vase - blue - hard color to find
- ___ 180. Big Basketweave 8 1/2" vase - marigold
- ___ 181. STIPPLED PEACOCKS PCE BOWL W/RIBBED BACK - LIME GREEN - ONLY BOWL I KNOW OF IN PASTEL COLORS THAT IS STIPPLED, AN EXTREME RARITY, HIGHLY DESIRABLE
- ___ 182. Moonprint butter dish - marigold - scarce, nice
- ___ 183. Acorn Burrs 7 pc. water set - green - minor nick on bottom edge of pitcher, nice set
- ___ 184. Acorn Burrs 7 pc. water set - purple - very nice set
- ___ 185. Acorn Burrs 7 pc. water set - marigold - lots of pinks on this set, super nice
- ___ 186. Inverted Strawberry 4 pc. table set - amethyst - very rare set, minor rough spots on base of butter dish
- ___ 187. Inverted Strawberry 4 pc. table set - marigold - outstanding set
- ___ 188. Inverted Strawberry creamer - green - pretty
- ___ 189. Wishbone PCE bowl w/BW back - white - frosty, super pretty, rare
- ___ 190. Wishbone PCE bowl w/BW back - smoke - super pretty lavender irid., a dandy
- ___ 191. Wishbone PCE bowl w/BW back - smoke - fantastic green irid. on this bowl
- ___ 192. Wishbone PCE bowl w/BW back - lavender - bright golden irid., beautiful
- ___ 193. Wishbone PCE bowl w/BW back - blue - electric & super, rare color
- ___ 194. Wishbone PCE bowl w/BW back - green - scarce
- ___ 195. Wishbone PCE bowl w/BW back - purple - very nice
- ___ 196. Wishbone PCE bowl w/BW back - marigold - dark, pumpkin type irid.
- ___ 197. Wishbone PCE bowl w/BW back - pastel marigold - pretty
- ___ 198. Tiger Lily 7 pc. water set - green
- ___ 199. HEARTS & FLOWERS RUFFLED BOWL W/RIBBED BACK - AQUA OPAL - FANTASTIC W/HEAVY OPAL ALL THE WAY INTO THE BASE, ONE OF JUST A FEW KNOWN LIKE IT, SUPER, SUPER
- ___ 200. Octagon large size water pitcher - marigold
- ___ 201. Octagon tumbler - marigold - has collar base
- ___ 202. Octagon small size 7 pc. water set - marigold - nice set
- ___ 203. Thumbprint & Ovals vase - purple - fantastic
- ___ 204. Thumbprint & Ovals vase - marigold - dark from top

- to bottom, one of the prettier ones I've seen
- ___ 205. Moonprint candlesticks - marigold - rare
 - ___ 206. M'burg Marilyn water pitcher - green - scarce & nice
 - ___ 207. M'burg Marilyn tumblers (2) - green - choice
 - ___ 208. M'burg Marilyn 7 pc. water set - amethyst - very rare set
 - ___ 209. M'burg Marilyn water pitcher - marigold - very pretty example
 - ___ 210. M'burg Marilyn tumbler - marigold
 - ___ 211. N's Stippled Peacock at Urn master IC bowl - reninger blue - very, very rare color & highly desirable
 - ___ 212. Moonprint 11" ruffled bowl - marigold
 - ___ 213. Inverted Strawberry giant rose bowl - amethyst - super pretty irid., rare
 - ___ 214. Inverted Strawberry giant rose bowl - marigold - also very beautiful for this rare rose bowl
 - ___ 215. Long Thumbprint 5 1/2" JIP squatty vase - amethyst - very rare shape, neat!
 - ___ 216. Long Thumbprint 6" JIP squatty vase - marigold - also very rare
 - ___ 217. Birds & Cherries 10" ruffled bowl - amethyst - extremely rare bowl, only ruffled version I have ever seen, PRETTY!
 - ___ 218. Springtime 7 pc. water set - marigold - super pretty dark color, scarce
 - ___ 219. N's Thin Rib 10" vase - ice blue - scarce color
 - ___ 220. Singing Birds 4 pc. table set - purple - very scarce set, nice
 - ___ 221. Singing Birds 4 pc. table set - marigold - dark, nice
 - ___ 222. Moonprint 8 pc. cordial set w/under plate - marigold - extremely rare, stopper has some damage at the end
 - ___ 223. Dahlia water pitcher - white - very hard to find pitcher, pretty
 - ___ 224. Dahlia tumbler - white
 - ___ 225. Dahlia water pitcher - marigold - dark & pretty, scarce
 - ___ 226. Dahlia tumbler - marigold - fantastic
 - ___ 227. Grape & Cable sweetmeat - blue - yes, blue, extremely rare color, not many opportunities to buy these, nice
 - ___ 228. Grape & Cable sweetmeat - marigold - dark & super, minor chip on flat of bottom, no harm on this rare piece
 - ___ 229. Grape & Cable sweetmeat - amethyst - super pretty, borderline lavender
 - ___ 230. Dragon & Strawberry deep round bowl - green - super pretty & very rare, minor tiny nick on base filled w/epoxy
 - ___ 231. Dragon & Strawberry deep round bowl - amethyst - absolutely super, quite rare
 - ___ 232. Dragon & Strawberry deep round bowl - blue - scarce, nice
 - ___ 233. Dragon & Strawberry deep round bowl - marigold - dark, super pretty
 - ___ 234. Wreathed Cherry 7 pc. water set - marigold - hard to find set, nice
 - ___ 235. Wishbone tri-cornered ftd bowl or 3 sided plate - green - exceptionally pretty, very hard to find
 - ___ 236. Wishbone ftd tri-cornered bowl or 3-sided plate - purple - very pretty example, scarce
 - ___ 237. Wishbone ftd tri-cornered bowl or 3-sided plate - marigold - dark, nice
 - ___ 238. Ftd Orange Tree water pitcher - white - scarce color
 - ___ 239. Ftd Orange Tree tumbler - white
 - ___ 240. Ftd Orange Tree water pitcher - blue - scarce, nice
 - ___ 241. Ftd Orange tree tumblers (2) - blue - choice
 - ___ 242. Ftd Orange Tree 6 pc. water set - marigold - nice, dark set
 - ___ 243. Stippled Grape & Cable Variant ruffled bowl w/ribbed back - sapphire - very scarce bowl, pretty
 - ___ 244. Stippled Grape & Cable Variant ruffled bowl w/ribbed back - green - very pretty, scarce
 - ___ 245. Moonprint 4" wine goblets (6) - marigold - choice
 - ___ 246. Dragon's Tongue ftd ruffled bowl - marigold - very rare bowl & nice, highly desirable piece
 - ___ 247. Raindrops dome ftd ruffled bowl - purple
 - ___ 248. Stippled Grape & Cable tobacco humidior - blue - rare color, rare stippled
 - ___ 249. Stippled Grape & Cable tobacco humidior - marigold - lots of pinks, nice
 - ___ 250. Tree Trunk 12 1/2" mid-size vase - purple - super irid., a beauty
 - ___ 251. Grape & Gothic Arches 4 pc. table set - blue - scarce set, nice
 - ___ 252. Grape & Gothic Arches 4 pc. table set - marigold - nice
 - ___ 253. Grape & Cable turned in centerpiece bowl - purple - very pretty w/electric blue highlights
 - ___ 254. Inverted Strawberry IC shaped giant compote - marigold - scarce, very nice
 - ___ 255. Fashion 7 pc. water set - marigold
 - ___ 256. Inverted Thistle 11" chop plate - amethyst - very rare, only one known in this pattern
 - ___ 257. Moonprint water bottle & under plate - marigold - neat
 - ___ 258. Vineyard water pitcher - purple - super pretty, tough color to find
 - ___ 259. Vineyard tumbler - purple
 - ___ 260. Vineyard tumbler - marigold
 - ___ 261. Concord 9" plate - amethyst - very scarce plate, nice
 - ___ 262. Acorn Burrs 5 pc. berry set - purple - super pretty set
 - ___ 263. Acorn Burrs 6 pc. berry set - marigold - dark, nice
 - ___ 264. Peacock lamp - red - super pretty irid., has metal shade, rare
 - ___ 265. Inverted Strawberry pair of candlesticks - marigold - very rare, nice
 - ___ 266. Ten Mums 3 in 1 edge bowl - green - has gorgeous blue irid., most would call it emerald
 - ___ 267. Grape & Cable cvd cracker jar - purple - super pretty
 - ___ 268. Stippled Good Luck ruffled bowl w/ribbed back - marigold - scarce
 - ___ 269. Fenton's Fine Rib 10" vase - celest blue - very rare vase, nice
 - ___ 270. Plaid ruffled bowl - green - scarce color plus nice
 - ___ 271. Springtime 4 pc. table set - green - very hard to find set, nice
 - ___ 272. Springtime 4 pc. table set - marigold - beautiful scarce set
 - ___ 273. Wishbone 10" ruffled bowl w/BW back - sapphire - super pretty irid. on this rare color, FANTASTIC!
 - ___ 274. Wishbone 10" ruffled bowl w/BW back - teal/sapphire - just a little different color than the previous, has pretty reddish irid. in center, nice piece
 - ___ 275. Wishbone 10" ruffled bowl w/BW back - green - scarce, pretty
 - ___ 276. Wishbone 10" ruffled bowl w/BW back - green - has a different green look
 - ___ 277. Wishbone 10" ruffled bowl w/plain back - purple - can't remember one w/a plain back, this may be a rare one, super pretty
 - ___ 278. Singing Birds water pitcher - green - has emerald type irid., super pretty
 - ___ 279. Singing Birds tumbler - green
 - ___ 280. Stippled Grape & Cable Variant PCE bowl w/ribbed back - aqua opal - very nice w/lots of opal, RARE
 - ___ 281. Vintage Banded ftd water pitcher - marigold - kind of a hard pitcher to find
 - ___ 282. Inverted Strawberry large spittoon shape - amethyst - extremely rare shape, have not seen one like this before
 - ___ 283. Moonprint 5 1/2" vase or celery vase - marigold
 - ___ 284. Tree Trunk 6 1/2" squatty vase - ice blue - fantastic irid. on this rare little vase
 - ___ 285. Tree Trunk 6 1/2" squatty vase - ice green - another pretty little vase, rare
 - ___ 286. Tree Trunk 7" squatty vase - white - super, rare

- ___ 287. Tree Trunk 7" squatty vase - green - pretty
 ___ 288. Tree Trunk 7" squatty vase - blue - super
 ___ 289. Tree Trunk 6" squatty vase - purple - nice
 ___ 290. Tree Trunk 6" vase w/ tri-cornered top - amethyst - neat whimsical shape
 ___ 291. Tree Trunk 7" squatty vase - marigold - a great run of vases
 ___ 292. **Butterfly & Berry 7 pc. water set - amethyst - very rare color for these, hardly ever sell these, great!**
 ___ 293. Inverted Strawberry spittoon - green - super nice
 ___ 294. Inverted Strawberry spittoon - marigold - nice, scarce
 ___ 295. **Poppy Show 9" plate - marigold - pretty pink irid., beautiful**
 ___ 296. Grape & Cable 11" ruffled bowl - green - fantastic red irid.
 ___ 297. **Blueberry water pitcher - marigold - fantastic dark irid., 1" heat check by handle**
 ___ 298. Blueberry tumbler - marigold - pretty
 ___ 299. Inverted Strawberry 9" round bowl - green
 ___ 300. Inverted Thistle cvd sugar, creamer & spooner - amethyst - very hard to find pieces, choice
 ___ 301. **Grape & Cable giant ruffled compote - green - very scarce color, hard to find**
 ___ 302. M'burg Vintage 10" IC shaped bowl w/Hobnail back - marigold - stain & nice, hard to find
 ___ 303. **Inverted Strawberry 4" little compote - blue - rare color for Cambridge, super piece**
 ___ 304. Inverted Strawberry 4" little compote - amethyst - scarce, nice
 ___ 305. **Cherry & Cable water pitcher - marigold - rare - pitcher, highly desirable**
 ___ 306. Cherry & Cable tumbler - marigold
 ___ 307. **Peacocks PCE bowl w/ribbed back - lavender - scarce color, nice**
 ___ 308. Peacocks PCE bowl w/ ribbed back - blue - has electric highlights, nice
 ___ 309. Grape & Cable 6" plate - purple
 ___ 310. **Inverted Strawberry chalice - marigold - extremely rare shape, pretty**
 ___ 311. Moonprint tall 6" water goblets (2) - marigold - choice
 ___ 312. **Grape & Cable water pitcher - smoke - extremely rare color, pretty example**
 ___ 313. Grape & Cable tumbler - smoke - rare color for the tumbler
 ___ 314. **Hearts & Flowers ruffled compote - aqua opal - pastel & super, some would call this ice blue opal**
 ___ 315. Wishbone ftd deep ruffled bowl - green - electric emerald irid., fantastic!
 ___ 316. Wishbone ftd deep ruffled bowl - blue - electric & super
 ___ 317. Wishbone ftd deep ruffled bowl - amethyst - has unique stretchy irid.
 ___ 318. **Stag & Holly chop plate - marigold - very nice example of a scarce chop plate**
 ___ 319. Dugan Cherries ftd tri-cornered crimped edge bowl - purple - super pretty
 ___ 320. Grape & Gothic Arches tumbler - marigold
 ___ 321. **Inverted Strawberry celery vase - blue - extremely rare piece, not many known, neat!**
 ___ 322. **Inverted Strawberry celery vase - amethyst - another rare piece, nice**
 ___ 323. **Inverted Strawberry celery vase - green - another goodie, what an opportunity!**
 ___ 324. Grape & Cable dresser tray - purple - nice
 ___ 325. Grape & Cable pin tray - purple - nice
 ___ 326. Grape & Cable perfume - purple - scarce
 ___ 327. Grape & Cable cologne bottles (2) - purple - choice
 ___ 328. Grape & Cable powder jar - purple - nice
 ___ 329. Grape & Cable pair of candlesticks - scarce, pretty pair
 ___ 330. **Fenton Zig Zag water pitcher w/no enamel decoration - amethyst - very unusual pitcher, have never seen this before, great irid.**
 ___ 331. Moonprint creamer - marigold
 ___ 332. **Leaf & Beads nut bowl - aqua opal - super example, has wonderful opal**
 ___ 333. Inverted Strawberry 4 1/2" bowl - amethyst - neat
 ___ 334. **Colonial Lady vase - purple - fantastic irid. on this rare vase**
 ___ 335. **Colonial Lady vase - marigold - dark, super**
 ___ 336. Open Rose 9" plate - marigold - flat as a pancake
 ___ 337. **Grape & Cable ruffled fruit bowl - white - frosty & pretty**
 ___ 338. Beaded Bullseye 8" squatty vase - purple - super!
 ___ 339. Beaded Bullseye 8 1/2" squatty vase - amber - fantastic
 ___ 340. Beaded Bullseye 7" squatty vase - marigold - has 6 1/2" flared out top
 ___ 341. **Milady tankard water pitcher - blue - very rare pitcher, nice**
 ___ 342. Leaf & Beads tri-cornered flared out dish - purple - odd shape
 ___ 343. **Dahlia 4 pc. table set - white - very scarce set, nice**
 ___ 344. **Dahlia 4 pc. table set - marigold - another super pretty set**
 ___ 345. Moonprint 3 1/4" cordial - marigold
 ___ 346. **COSMOS & CANE 7 PC. TANKARD WATER SET - WHITE - SUPER PRETTY, FROSTY, RARE**
 ___ 347. Windmill round sauce - marigold
 ___ 348. **Stippled Grape & Cable 10" ruffled bowl w/ribbed back - blue - electric & super, rare bowl**
 ___ 349. Moonprint 6" ftd tumbler - marigold
 ___ 350. **Fenton's Peacock at Urn 9" plate - blue - electric & gorgeous!**
 ___ 351. Beaded Shell 7 pc. water set - marigold - rare set, nice
 ___ 352. **Buzz Saw small size cruet w/stopper - green - scarce**
 ___ 353. **M'burg Trout & Fly ruffled bowl - marigold - radium, a super pretty example**
 ___ 354. Tiger Lily tumbler - purple - nice
 ___ 355. Tiger Lily tumbler - olive green
 ___ 356. Tiger Lily tumbler - green
 ___ 357. **INVERTED FEATHER 4 PC. TABLE SET - AMETHYST - WHAT A NEAT SET, EXTREMELY RARE, A TOP OF THE LINE TABLE SET**
 ___ 358. Diamond Cut Shields 6 pc. water set - marigold
 ___ 359. **Stippled Peacocks ruffled bowl w/ribbed back - reninger blue - very pretty stretchy irid., hard to find pretty**
 ___ 360. Ten Mums ruffled bowl - amethyst - pretty
 ___ 361. **Cambridge cologne bottle - green - fantastic electric green irid on this piece, beautiful!**
 ___ 362. **Stippled Peacocks 9" plate w/ribbed back - marigold - tons of pink irid., another beauty**
 ___ 363. **Stippled Good Luck PCE bowl w/ ribbed back - reninger blue - very scarce, highly desirable**
 ___ 364. Miniature hatchet - marigold
 ___ 365. **M'burg Peacock master berry bowl - amethyst - radium, super nice**
 ___ 366. Moonprint compote - marigold - nick on base
 ___ 367. **WISHBONE 7 PC. WATER SET - GREEN - FANTASTIC SET, THESE DON'T COME UP FOR SALE VERY OFTEN**
 ___ 368. **WISHBONE WATER PITCHER - PURPLE - FANTASTIC IRID., WOW**
 ___ 369. Wishbone tumblers (2) - purple - choice
 ___ 370. **WISHBONE 7 PC. WATER SET - MARIGOLD - SUPER PRETTY, DARK FROM TOP TO BOTTOM, THE END OF A GREAT RUN OF WISHBONE!**
 ___ 371. Stretch glass 4" two sides up vase - red
 ___ 372. Fern Panels ruffled hat - red - cracked
 ___ 373. N's Bushel Basket - aqua opal - cracked



Seeck Auctions

P.O. Box 377
Mason City, Iowa 50402

PRESORTED
FIRST CLASS MAIL
U.S. POSTAGE
PAID
MAIL EXPEDITORS

ICGA Convention

Auction

Saturday, July 17th, 2010 - 9:30 AM

Holiday Inn Lakeview - Louisville North
505 Marriott Drive • Clarksville, Indiana

T4 P1 298
Lee Markley
PO Box 306
Mentone IN 46539-0306

