

Lincoln Land Carnival Glass Club Convention

Auction

Saturday, June 5th, 2010 • 9:30 A.M.

*Best Western Milwaukee Airport Hotel and Convention Center
5105 South Howell Avenue • Milwaukee, Wisconsin*

For Reservations, call (414)769-2100



10



25



50

137

341

271



106

105

32

JIM & JAN SEECK

Seeck Auctions

641-424-1116



Carnival Glass Auction

SATURDAY, JUNE 5th, 2010 • 9:30 A.M.



Best Western Airport Hotel • Milwaukee, Wisconsin

NO BUYER'S PREMIUM

OPEN TO THE PUBLIC

Don't forget to check out our website for lots of pictures!

www.seeckauktion.com

Also, please email us and we will put you on our email mailing list for auction notices.

Seeck Auctions pleased to bring the Adam & Ani Aivazian Carnival Glass collection to the Lincoln Land convention this year. Adam & Ani are from Southern California and have been very active in the Southern California club over the years. They were excellent buyers of glass and had an eye for fine Carnival Glass. This is a fantastic collection that includes several rare and beautiful pieces! We would love to see you in Milwaukee this year.

Lincoln Land Club Convention info: Contact President Tina White at 262-652-0971
For Reservations at the Best Western Hotel, call (414)769-2100

Terms: Cash or Check, VISA and MasterCard accepted w/proper ID. 4 % Clerking Fee on all purchases except for payment of cash or check. Announcements made day of sale take precedence over any printed information.

Jim and Jan Seeck
641-424-1116

Seeck Auctions

EMAIL:
jimjan@seeckauktion.com

ABSENTEE BID POLICY

1. Write-in bids will be accepted by sending the numbers of the item(s) desired and the amount bid on each to:
Seeck Auctions, PO Box 377, Mason City, Iowa 50402.
2. You may call in your bids previous to the auction at (641) 424-1116. (this is not live phone bidding)
3. You may email your bids to us: jimjan@seeckauktion.com. Continue to include the numbers of the item(s) you would like to bid on and amount bid on each, please include your name and telephone number.
4. Live phone bidding is available. Bidding must start on item at \$500. Please call for details.
5. There is a **\$7 handling charge** for each successful bid. Shipping and insurance charges are additional.
6. Bidders will be notified by phone/email if their bid(s) are successful. This will be done 1 - 3 days after the auction.
7. Please have all bids in by **Wed., June 2nd**. All bids (by mail, phone or **email**) after this date may not be carried out.
8. Please place bids in the following increments: \$1 to \$300 - \$5 increments \$300 up - \$25 increments.
9. **If you do not receive an item that sold for less than your bid, assume we cancelled your bid because the piece of glass had below average color, manufacture problem, damage or was not listed correctly.**
10. Auction results are posted on our website within 2 weeks of the auction.

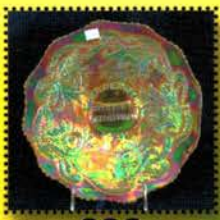
- ___ 1. Leaf Swirl compote - amber
- ___ 2. Leaf Swirl compotes (2) – aqua - choice
- ___ 3. Wreath of Roses ruffled compote - amethyst
- ___ 4. Blackberry Bramble ruffled compote - amethyst
- ___ 5. Fine Cut Flower ruffled compote - green
- ___ 6. Peacock Tail ruffled compote - amethyst
- ___ 7. Peacock at the Urn ruffled compote - marigold
- ___ 8. N's Smooth Rays deep ruffled compotes (2) - green - choice
- ___ 9. Scotch Thistle CRE ruffled compote - blue
- ___ 10. Good Luck 9" plate w/ribbed back - marigold - pumpkin & super, a beautiful plate!
- ___ 11. Good Luck 9" plate w/BW back - green - scarce, nice
- ___ 12. Waterlily master ftd round berry bowl - marigold - super
- ___ 13. Diamond Lace 7 pc. water set - purple - super
- ___ 14. Heart & Vine CRE bowl - marigold
- ___ 15. Dragon & Lotus ruffled bowl - peach opal - pretty & scarce
- ___ 16. Dragon & Lotus ruffled bowl - blue - nice
- ___ 17. Peacocks 9" plate w/ribbed back - purple - super pretty
- ___ 18. Peacocks 9" plate w/ribbed back - ice green - very nice
- ___ 19. Peacocks 9" plate w/ribbed back - white - frosty, pretty
- ___ 20. Persian Garden 6" plate - marigold
- ___ 21. Rising Sun ftd water pitcher - marigold - small chip on foot
- ___ 22. Rising Sun water pitchers (2) - marigold - choice
- ___ 23. Rising Sun tumblers (2) - marigold - choice
- ___ 24. Rising Sun butter dishes (2) - marigold - choice
- ___ 25. Compliments of Pacific Coast Mail Order House Los Angeles/Fenton's Grape & Cable fruit bowl - blue – extremely rare, only a few known, super pretty
- ___ 26. Fenton's Flowers rose bowl - marigold - super pretty
- ___ 27. Fenton's Peacock at Urn 9" plates (2) - white - both pretty, choice
- ___ 28. Fenton's Peacock at Urn 9" plate - marigold - very pretty
- ___ 29. Butterfly & Berry 7 pc. berry set - marigold
- ___ 30. Stippled Grape & Cable Variant ruffled bowl w/ribbed back - sapphire - super pretty rare bowl
- ___ 31. Cherry Circles card tray shaped bon bon - blue
- ___ 32. E.A. Hudson furniture Co. advertising 6" handgrip plate - amethyst - pretty
- ___ 33. Blackberry Spray ruffled hat - blue
- ___ 34. Singing Birds 7 pc. water set - green - very nice
- ___ 35. Singing Birds 7 pc. water set - purple - a pretty set
- ___ 36. Basketweave Open Edge ruffled basket - green
- ___ 37. Basketweave Open Edge ruffled baskets (3) - blue - choice
- ___ 38. M'burg Blackberry Wreath 10" ruffled bowl - blue - very scarce in blue, minor pinpoint on collar base, satin
- ___ 39. Coin Spot small size rose bowl - green - scarce in small size
- ___ 40. Heart & Vine 9" plate - blue - super pretty, as nice as they get
- ___ 41. M'burg Holly Whirl 10" ruffled bowl - amethyst - satin
- ___ 42. Rose Show 9" plate - purple - very scarce & desirable, nice
- ___ 43. Rose Show 9" plate - marigold - nice
- ___ 44. Dugan Cherries 6" ruffled sauce - purple
- ___ 45. Banded Grape & Cable lg orange bowl - blue - scarce
- ___ 46. Fruits & Flowers 7" ruffled bowl - purple
- ___ 47. Star & Fan 8 pc. cordial set w/under plate - marigold
- ___ 48. Zipperstitch 7 pc. cordial set, no under plate - marigold - nice set
- ___ 49. Zipperstitch bottles (2) - marigold - choice
- ___ 50. Peter Rabbit 9" plate - green - extremely rare & desirable, a real beauty
- ___ 51. Stream of Hearts ruffled compote - marigold
- ___ 52. Embroidered Mums ruffled bowl w/ribbed back - blue - scarce, nice
- ___ 53. Embroidered Mums ruffled bowl w/ribbed back - marigold - nice
- ___ 54. Wild Rose ftd open edge bowl - green
- ___ 55. Starflower water pitcher - blue - very rare, highly desirable
- ___ 56. Flowers & Frames deep ruffled dome ftd bowl - peach opal
- ___ 57. Concord ruffled bowl - green - super pretty, a great one
- ___ 58. Concord ruffled bowl - amethyst
- ___ 59. Wishbone ftd ruffled bowl - purple
- ___ 60. Dragon & Strawberry deep round bowl - green - super pretty & rare
- ___ 61. Three Fruits spt ftd ruffled bowl - green
- ___ 62. Illinois Soldiers & Sailors 7" plate - blue - rare & desirable, very nice
- ___ 63. Fine Cut & Roses rose bowls (2) - green - choice
- ___ 64. Fine Cut & Roses rose bowl - purple - chip on foot
- ___ 65. N's Peacock at Urn master IC bowl - white - scarce
- ___ 66. N's Peacock at Urn master IC bowl - custard, non-carnival
- ___ 67. Grape & Cable 7" IC shaped bowl - amethyst - super pretty
- ___ 68. Captive Rose 9" plate - green - scarce, nice

- ___ 69. Captive Rose 9" plate - blue - very pretty example, also scarce
- ___ 70. Peacock Tail ruffled hats (2) - blue - choice
- ___ 71. Wreath of Roses w/Vintage interior flared out punch bowl & base - green - very rare shape
- ___ 72. Wreath of Roses 8 pc. punch set w/Vintage interior - green - scarce & nice
- ___ 73. Pinwheel or Derby 10" vase - marigold
- ___ 74. M'burg 1910 Detroit Elks IC shaped bowl - amethyst - radium, extremely rare & highly desirable
- ___ 75. Scroll Embossed 8" round bowl - purple pretty
- ___ 76. Ftd Orange Tree 6 pc. water set - marigold - lg chip on foot
- ___ 77. Chrysanthemum lg size ftd ruffled bowl - blue - pretty
- ___ 78. Fruits & Flowers bonbon - aqua opal - scarce, nice
- ___ 79. Grape & Cable hatpin holder - green - scarce
- ___ 80. Grape & Cable hatpin holders (2) - purple - choice
- ___ 81. Sailboats square shaped sauce - marigold - pretty
- ___ 82. Hattie rose bowl - purple - super pretty, extremely rare
- ___ 83. Hattie rose bowl - marigold - dark, nice, rare
- ___ 84. Peacock Tail ftd bonbon - marigold
- ___ 85. Imperial Grape 7 pc. wine set - purple - stopper is smoke
- ___ 86. Peacocks ruffled bowl w/ribbed back - green - scarce color
- ___ 87. Peacocks ruffled bowl w/ribbed back - blue - electric, nice
- ___ 88. Peacocks ruffled bowl w/ribbed back - purple
- ___ 89. Peacocks ruffled bowl w/ribbed back - marigold
- ___ 90. Tree Trunk 9" vase - green
- ___ 91. Tree Trunk 8" vase - marigold
- ___ 92. Holly 9" plate - teal - rare color w/super irid., this is a great plate!
- ___ 93. Holly 9" plate - white - pretty
- ___ 94. Holly 9" plate - clambroth
- ___ 95. Acorn ruffled bowl - red - base has been polished
- ___ 96. Acorn ruffled bowl - amber - nice
- ___ 97. Acorn ruffled bowl - marigold
- ___ 98. Persian Garden 12 1/2" chop plate - amethyst - extremely rare & highly desirable
- ___ 99. Pinched Swirl 4" tri-cornered vase - peach opal
- ___ 100. Fenton's Grape & Cable w/Persian Medallion interior fruit bowl - amethyst - super pretty
- ___ 101. Fenton's Grape & Cable fruit bowl w/Persian Medallion interior - marigold - nice
- ___ 102. Millers Furniture Basketweave Open Edge 2 sided up basket - marigold
- ___ 103. Dragon & Lotus 3 in 1 edge bowl peach opal - very pretty
- ___ 104. Fern CRE JIP hat - marigold
- ___ 105. Jockey Club advertising handgrip plate - amethyst - pretty
- ___ 106. Jockey Club advertising ruffled bowl - amethyst - very scarce, nice
- ___ 107. Scroll Embossed ruffled compotes (2) - green - choice
- ___ 108. Tornado small size vase - marigold - scarce, nice
- ___ 109. Fentonia round master ftd berry bowl - blue - some call this Fentonia Fruit
- ___ 110. Good Luck PCE bowl w/ribbed back - marigold - dark, pretty
- ___ 111. Stippled Rays lg size rose bowl - amethyst
- ___ 112. Grape & Cable 7 pc. water set - green - pitcher is very nice
- ___ 113. Fenton's Grape & Cable spt ftd ruffled bowl - blue
- ___ 114. Orange Tree w/trunk ruffled bowl - green - super pretty, scarce color
- ___ 115. Orange Tree w/trunk ruffled bowl - blue
- ___ 116. Orange Tree ruffled bowl - white
- ___ 117. M'burg Trout & Fly IC shaped bowl - green - radium, a dandy
- ___ 118. Beaded Cable rose bowl w/Rayed interior amethyst
- ___ 119. Beaded Cable rose bowl - marigold
- ___ 120. NUART Homestead chop plate - purple - super pretty, highly desirable, nice plate
- ___ 121. Grape & Cable 7" plate - purple
- ___ 122. Stippled Rays 6" round bowl - red - pretty
- ___ 123. Stippled Rays 6" round bowl - blue
- ___ 124. Stippled & Banded Grape & Cable banana boat - green - super pretty irid.
- ___ 125. Blackberry Spray CRE ruffled hat - blue
- ___ 126. Captive Rose CRE ruffled compote - blue
- ___ 127. Grape & Gothic Arches 4 pc. table set - marigold - dark & matching
- ___ 128. Diamond Point 7" squatty vase - green - pretty, scarce
- ___ 129. Diamond Point 9" vase - amethyst
- ___ 130. Diamond Point 10" vase - marigold - nice
- ___ 131. M'burg Diamonds 7 pc. water set - amethyst - scarce, hard set to get
- ___ 132. Flowers & Frames dome ftd ruffled bowl - purple - nice
- ___ 133. Orange Tree round shaped 7 pc. punch set - marigold
- ___ 134. Hattie deep round bowl - purple - outside of bowl is unbelievable
- ___ 135. Persian Medallion chop plate - blue - silvery
- ___ 136. Fenton's Thin Rib 16" vase - blue

- ___ 137. Dorsey and Funkenstein Fine Furniture advertising ruffled bowl - amethyst - very scarce adv. piece
- ___ 138. Fuchsia ftd hdd bonbon - marigold - very rare pattern
- ___ 139. Open Rose 9" plate - amber - nice
- ___ 140. Open Rose 9" plate - green
- ___ 141. Open Rose 9" plate - marigold - pretty
- ___ 142. Christmas compote - purple - extremely rare & highly desirable, nice piece
- ___ 143. Fish 9 1/2" frosted vase - marigold
- ___ 144. Fish 9" vases (4) - marigold - choice
- ___ 145. Fish 8 1/2" vase - marigold - has small base than previous lots
- ___ 146. Elephant 9" vase - marigold
- ___ 147. Elephant 6 1/2" vases (3) - marigold - choice
- ___ 148. Two Flowers lg size IC shaped bowl - lime green - super pretty, scarce color
- ___ 149. Holly IC shaped bowl - clambroth
- ___ 150. Stippled Strawberry 9" plate w/ribbed back - marigold - very rare plate & pretty, chip on one point
- ___ 151. Miniature Morning Glory 5" vase - marigold
- ___ 152. Nippon PCE bowl w/ribbed back - ice blue - pretty
- ___ 153. Tiger Lily 7 pc. water set - marigold
- ___ 154. Peacock at the Fountain fruit bowl - blue - super pretty, rare
- ___ 155. Butterflies bonbon - amethyst
- ___ 156. Butterflies bonbon - green
- ___ 157. Thistle 9" plate - amethyst - very rare plate, silvery
- ___ 158. Beads ruffled bowls (2) - green - choice
- ___ 159. Mikado IC shaped giant compote - blue - fantastic w/electric irid.
- ___ 160. Ripple 10" vase w/2 3/4" base - aqua
- ___ 161. Poppy Show 9" plate - blue - very scarce, highly desirable
- ___ 162. M'burg Primrose ruffled bowls (2) - green - radium, choice
- ___ 163. Butterfly & Berry 7 pc. water set - blue - pitcher is cracked
- ___ 164. Fenton's Panels 12 1/2" vase - blue
- ___ 165. Grape & Cable cracker jar - marigold - pretty
- ___ 166. Three Fruits PCE bowl w/BW back - green
- ___ 167. Grape & Cable fruit bowl w/points straight up - ice green - rare & desirable
- ___ 168. Hudson's, Tahlequah, Okla" Peacock Tail ruffled hat - green
- ___ 169. Stippled Peacocks 9" plate w/ribbed back - blue - scarce, nice
- ___ 170. Stippled Peacocks 9" plate w/ribbed back - marigold - lots of yellow stretchy irid., nice!
- ___ 171. Rose Garden 10 1/2" vase - marigold
- ___ 172. Central Shoe Store advertising 6" plate - amethyst - very scarce plate
- ___ 173. Basketweave Open Edge 2 sides up basket - marigold
- ___ 174. Butterfly & Fern 7 pc. water set - green - nice
- ___ 175. Persian Medallion 6" plates (3) - blue - choice
- ___ 176. Grape & Cable turned in centerpiece bowl - purple - nice, scarce
- ___ 177. Double Stemmed Rose dome ftd ruffled bowl - odd olive green - chip on base
- ___ 178. Fishnet epergne - peach opal
- ___ 179. Beaded Cable flared out candy dish, made from rose bowl - purple
- ___ 180. Holly ruffled bowl - red - scarce, nice
- ___ 181. Heart & Vine ruffled bowl - amethyst
- ___ 182. Stippled Grape & Cable Variant 9" plate w/ribbed back - marigold - scarce
- ___ 183. Louisa rose bowl - green
- ___ 184. Stag & Holly spt ftd 9" plate - marigold - scarce, nice
- ___ 185. Wreathed Cherry master banana boat - purple
- ___ 186. N's Bushel basket - aqua opal - butterscotch & pretty
- ___ 187. N's Bushel Basket - blue
- ___ 188. N's Bushel Basket - blue opal - not carnival
- ___ 189. Grape & Cable giant compote - purple - very nice example
- ___ 190. Persian Medallion IC shaped bowl - blue - silvery
- ___ 191. Grape & Cable sweetmeats (2) - purple - choice
- ___ 192. Strawberry ruffled bowl w/BW back - marigold - nice
- ___ 193. Round Up 9" plate - blue - very pretty
- ___ 194. Round Up 9" plate - peach opal - a beauty
- ___ 195. Diamond Cut Shield water pitcher - marigold - pretty
- ___ 196. Butterflies card tray shaped bonbon - green
- ___ 197. Sunflower spt ftd ruffled bowl - blue - super pretty
- ___ 198. Stretch Glass 10 1/2" plate - yellow/amber - unusual piece
- ___ 199. Good Luck ruffled bowl w/ribbed back - marigold - pumpkin
- ___ 200. Ripple 12 1/2" vase, 3 3/8" base - purple - nice
- ___ 201. Holly ruffled compote - marigold
- ___ 202. Butterfly & Berry master berry bowl - amethyst - rare color
- ___ 203. Peacock at the Fountain spooner - green - nice
- ___ 204. Peacock at the Fountain spooner - purple
- ___ 205. Diamond Rib 7" squatty vase - amethyst
- ___ 206. Diamond Rib 7" squatty vase - marigold
- ___ 207. Fern Brand Chocolates handgrip plate - amethyst - scarce & desirable
- ___ 208. Starfish ruffled compote - peach opal
- ___ 209. Orange Tree 9" plate - marigold - nice
- ___ 210. Vintage fernery - amethyst - super pretty

- ___ 211. Wishbone epergne - purple - scarce, highly desirable
 ___ 212. Jacobean Ranger perfume bottles (2) - marigold - choice
 ___ 213. Jacobean Ranger pin dish - marigold
 ___ 214. Grape & Cable 7 pc. berry set - purple
 ___ 215. Petal & Fan 6" ruffled saucers (2) - peach opal - choice
 ___ 216. Dragon & Lotus IC shaped bowl - red - scarce & desirable
 ___ 217. Dragon & Lotus IC shaped bowl - blue - nick on point
 ___ 218. Persian Medallion 6" ruffled saucer - marigold
 ___ 219. Stag & Holly lg size IC shaped bowl - blue - scarce
 ___ 220. Paneled Diamond & Bows 5" squat vase - marigold
 ___ 221. M'burg Trout & Fly 3 in 1 edge bowl - amethyst - satin, scarce
 ___ 222. Two Fruits divided bonbon - marigold
 ___ 223. Beetle ashtray - blue - very rare & highly desirable
 ___ 224. Vintage powder jar - marigold
 ___ 225. Hearts & Flowers ruffled compote - ice blue - manufacture open bubble on base
 ___ 226. Flowering Dill crimped edge square shaped bowl - amethyst
 ___ 227. Oriental Poppy 5 pc. water set - purple - desirable
 ___ 228. Singing Birds w/"Amazon Hotel & Cafe" adv. - purple
 ___ 229. Stippled Rays 7" ruffled bowl - reverse amberina - nice
 ___ 230. Zippered Heart ruffled saucer - purple
 ___ 231. Springtime 9" vase, Karhula - blue
 ___ 232. Panther master ftd berry bowl - marigold
 ___ 233. Panther ftd round saucer - marigold
 ___ 234. Old Rose Distillery Stippled Grape & Cable Variant 9" plate w/ribbed back - green - nice
 ___ 235. M'burg Zig Zag IC shaped bowl - amethyst - radium, nice
 ___ 236. Imperial Jewels 8" rose bowl - marigold - nice, has Imperial Cross Mark
 ___ 237. Imperial Jewels 5 1/2" vase - marigold - has Imperial Cross Mark
 ___ 238. Hearts & Flowers ruffled bowl w/ribbed back - blue - scarce color
 ___ 239. Feathered Serpent ruffled saucer - green
 ___ 240. Imperial Grape deep round bowl - purple - pretty
 ___ 241. Grape & Gothic Arches 7 pc. water set - blue - scarce, nice
 ___ 242. Cherry Chain ruffled saucer - amethyst
 ___ 243. Fenton's Peacock at Urn ruffled bowl - blue - nice
 ___ 244. Luster Rose fernery - purple -
 ___ 245. Luster Rose fernery - marigold
 ___ 246. Poinsettia & Lattice ftd ruffled bowl w/ribbed back - blue - has electric highlights, scarce
 ___ 247. Iris ruffled compote - amethyst
 ___ 248. Orange Tree fruit bowl - blue - very pretty, scarce
 ___ 249. Leaf Chain 7" plate - blue - silvery
 ___ 250. Windmill pickle dish - marigold
 ___ 251. Eat Paradise Sodas advertising 6" plate - amethyst - a bit silvery
 ___ 252. M'burg Little Star 7" IC shaped bowl - green - satin, scarce
 ___ 253. Banded Grape & Cable hatpin holder - purple - scarce, chip on foot
 ___ 254. Amethyst tumblers including: Grape & Cable (4); Dugan Peacock at the Fountain; M'burg Diamonds - choice
 ___ 255. Leaf Chain 9" plate - blue - very scarce, has stretchy irid.
 ___ 256. Leaf Chain 9" plate - white
 ___ 257. Orange Tree shaving size mug - blue
 ___ 258. Wreathed Cherry butter dish - amethyst - scarce, nice
 ___ 259. Peacock & Grape ruffled bowl - marigold
 ___ 260. Paneled Holly bonbon - green
 ___ 261. Six Sided pair of candlesticks - marigold - nice
 ___ 262. Waffleblock punch bowl top - aqua - scarce color
 ___ 263. Stippled Grape & Cable Var PCE bowl w/ribbed back - marigold - lots of pink & yellow irid.
 ___ 264. N's Smooth Rays bonbon - amethyst
 ___ 265. Scroll Embossed 8" ruffled bowl w/File back - purple
 ___ 266. Pony 6 ruffled bowl - marigold
 ___ 267. Wishbone tri-cornered ftd dish - marigold - dark, nice
 ___ 268. Australian Butterfly & Christmas Bells 8" compote - purple
 ___ 269. Flute toothpick - purple
 ___ 270. Grape & Cable sherbet - purple
 ___ 271. Ogden Furniture & Carpet Co. advertising ruffled bowl - amethyst - very scarce & nice
 ___ 272. Stippled Petals 8" ruffled bowl - peach opal
 ___ 273. Round Up low IC shaped bowl - purple - silver & gold irid.
 ___ 274. Butterfly & Berry spooner - blue
 ___ 275. S-Repeat whiskey decanter & 4 wines - amethyst w/gold trim - not carnival
 ___ 276. S-Repeat tray - amethyst w/gold trim - not carnival
 ___ 277. Alligator novelty - amber - unusual piece, nice irid.
 ___ 278. Luster Rose 10" ruffled bowl - clam broth
 ___ 279. Floral & Grape water pitcher - amethyst
 ___ 280. Propeller lg dome ftd bowl - marigold

- ___ 281. **Stippled Peacocks ruffled bowl w/ribbed back - marigold - very pretty**
- ___ 282. Persian Garden IC shaped sauce- white-pretty
- ___ 283. Corinth 8 1/2" vase - peach opal - neat looking vase, opal goes up & down ribs
- ___ 284. Diamond Lace 7 pc. water set - purple - super
- ___ 285. Louisa nut bowl - green
- ___ 286. Sailboats 6" plate - marigold - scarce
- ___ 287. Green tumblers including: Singing Birds (4); Grape & Cable (3); Butterfly & Fern - choice
- ___ 288. **Peter Rabbit IC shape bowl - blue - very rare & highly desirable**
- ___ 289. Coin Dot deep round 7" bowl - green
- ___ 290. Drapery 9" vase - marigold - dark & pretty
- ___ 291. Inverted Feather cracker jar - green
- ___ 292. Corinth 8 1/2" JIP vase - amethyst
- ___ 293. Asters 5 1/2" rose bowl - marigold
- ___ 294. Leaf & Beads tri-cornered ftd dish - green - made from rose bowl
- ___ 295. Hatpins including: Sun's Up; Six Plums(3); Moire Beetle (2); Banded CrissCross; Big Butterfly; Tufted Throw Pillow; Elegance; 2 non-irid.; Butterfly on Honeycomb (non irid.) - blue & amber; Spider - blue (non irid.); & other non carnival - choice
- ___ 296. Palm Beach rose bowl - amethyst - scarce
- ___ 297. N's #657 pair of candlesticks - russet
- ___ 298. Three Fruits 9" plate w/BW back - marigold
- ___ 299. Fishscale & Beads 6" ruffled sauce - marigold
- ___ 300. Plaid IC shaped bowl - blue - nice
- ___ 301. Wreath of Roses rose bowl - marigold
- ___ 302. Cobblestone ruffled bowl - purple - super
- ___ 303. Rose Garden 5" letter vase - blue - scarce
- ___ 304. Constellation ruffled compote - white
- ___ 305. **Formal hatpin holder - marigold - nice**
- ___ 306. April Showers 11" vase - blue
- ___ 307. Horse Medallion JIP shaped bowl - vaseline
- ___ 308. Blue tumblers including: N's Peacock at the Fountain (3); Stork & Rushes; Butterfly & Berry; Floral & Grape - choice
- ___ 309. M'burg Holly Sprig Variant - marigold - radium, dark, has the 8 point star in center
- ___ 310. Captive Rose IC shaped bowl - green - nice
- ___ 311. **N's Peacock at Urn IC sauce - green - super pretty, tough color to find**
- ___ 312. Imperial Grape 10" deep round bowl - marigold
- ___ 313. Grape & Cable pin tray - marigold - scarce
- ___ 314. Leaf & Beads rose bowl - marigold - nice
- ___ 315. Miniature Lamp w/doves - marigold - flashed on irid., unusual
- ___ 316. **Holly ruffled hatshape - amethyst opal - rare color**
- ___ 317. Star Medallion milk pitcher - marigold
- ___ 318. Kitten square shaped toothpick - blue - unusual shape
- ___ 319. Kitten's cereal bowl - powder blue - carce color
- ___ 320. Rococco vase - marigold
- ___ 321. **Stippled Strawberry ruffled bowl w/ribbed back - blue - electric, super & scarce**
- ___ 322. Orange Tree ruffled compote - lime green w/marigold overlay
- ___ 323. Big Basketweave 10 1/2" vase - ice blue - rare, has polished spot on base
- ___ 324. Perfume - marigold - nick on top of stopper
- ___ 325. **Nautilus whimsey sugar - purple - as nice as they get**
- ___ 326. Question Mark bon bon - marigold
- ___ 327. Persian Medallion 7" plate - marigold - very nice, hard to find in this size
- ___ 328. Imperial Grape ruffled sauces (6) - marigold - choice
- ___ 329. Horse Medallion 7" plate - marigold
- ___ 330. Pansy hldd nappy - marigold
- ___ 331. Six Sided candlestick - marigold - a single, nice
- ___ 332. N's Stippled Rays deep ruffled bowl - amethyst
- ___ 333. Vintage 7" plate - green - super pretty
- ___ 334. Art Glass bride's bowl - green
- ___ 335. Waterlily round ftd master berry bowl - amethyst
- ___ 336. **Spector's Department Store Heart & Vine 9" plate - marigold - super pretty w/lots of yellow & pink irid.**
- ___ 337. 1910 New Orleans Shriner champagne - clear
- ___ 338. N's Blackberry ruffled compote - purple
- ___ 339. Grape & Cable 9" plate w/BW back - green
- ___ 340. Daisy & Scroll decanter - marigold - not sure of this pattern name
- ___ 341. **Gevurtz Bros. Furniture & Clothing 9" advertising plate - amethyst - scarce, nice**
- ___ 342. Pond Lily bonbon - blue camphor glass - non-carnival
- ___ 343. Chrysanthemum lg size deep ruffled bowl - blue
- ___ 344. All marigold including: Waterlily tumblers (6); Enameled Forget-me-not tumblers(6); Octagon water goblets(2); Octagon wines(5) - choice
- ___ 345. Punch cups including: S-Repeat (10) - purple; Stippled Grape & Cable - purple; Wreath of Roses w/Vintage interior - amethyst; Acorn Burrs - green; Stork & Rushes - marigold - choice
- ___ 346. Stretch glass pcs. - choice
- ___ 347. Damaged Vintage Carnival glass pcs. - choice
- ___ 348. Large pink opal Fenton basket - contemporary
- ___ 349. Contemporary pcs. including: HOACGA table favors - choice
- ___ 350. Misc. marigold pcs. of carnival glass - choice



336

Seeck Auctions

P.O. Box 377
Mason City, Iowa 50402

PRESORTED
FIRST CLASS MAIL
U.S. POSTAGE
PAID
MAIL EXPEDITORS

Lincoln Land Carnival
Glass Club Convention

Auction

Saturday, June 5th, 2010
9:30 A.M.

*Best Western Milwaukee Airport
Hotel and Convention Center
Milwaukee, WI*

T4 P1 123
Lee Markley
PO Box 306
Mentone IN 46539-0306

